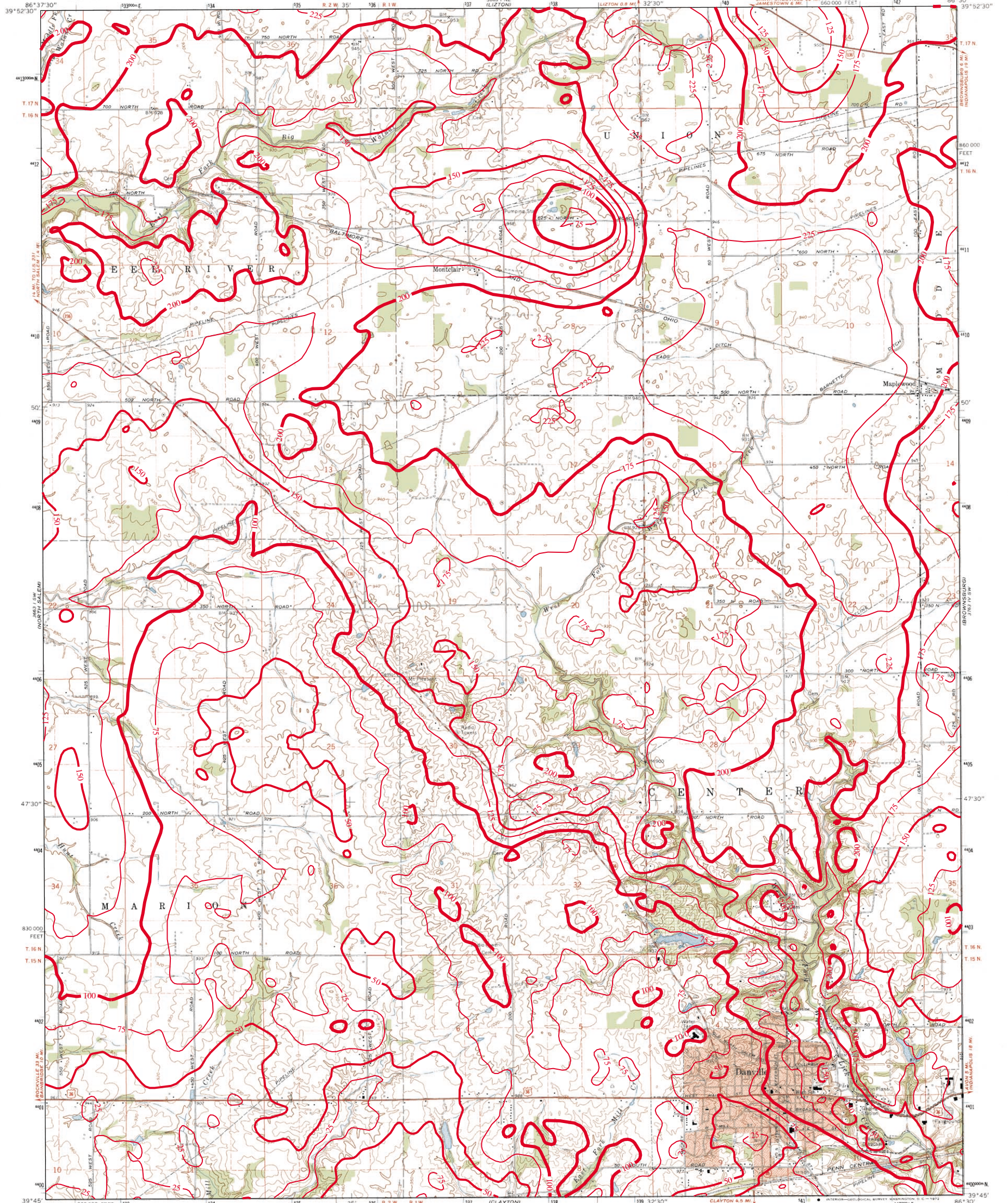


# THICKNESS OF UNCONSOLIDATED DEPOSITS OF DANVILLE QUADRANGLE, INDIANA

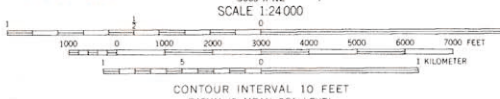
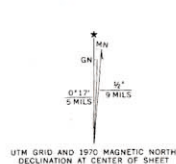
UNITED STATES  
DEPARTMENT OF THE INTERIOR  
GEOLOGICAL SURVEY

STATE OF INDIANA  
DEPARTMENT OF NATURAL RESOURCES  
INDIANAPOLIS, INDIANA

DANVILLE QUADRANGLE  
INDIANA—HENDRICKS CO.  
7.5 MINUTE SERIES (TOPOGRAPHIC)



Mapped, edited, and published by the Geological Survey  
Control by USGS, USC&GS, and Indiana Flood Control and  
Water Resources Commission  
Planimetry by photogrammetric methods from aerial photographs  
taken 1952 and 1953. Topography by planimetric surveys 1953  
Revised from aerial photographs taken 1969. Field checked 1970  
Polyconic projection. 1927 North American datum  
10,000-foot grid based on Indiana coordinate system; west zone  
1000-meter Universal Transverse Mercator grid ticks,  
zone 16, shown in blue  
Fine red dashed lines indicate selected fence and field lines where  
generally visible on aerial photographs. This information is unchecked  
Red tint indicates area in which only landmark buildings are shown



THIS MAP COMPLIES WITH NATIONAL MAP ACCURACY STANDARDS  
FOR SALE BY U.S. GEOLOGICAL SURVEY, WASHINGTON, D. C. 20242  
AND INDIANA DEPARTMENT OF NATURAL RESOURCES, INDIANAPOLIS, INDIANA 46204  
A FOLDER DESCRIBING TOPOGRAPHIC MAPS AND SYMBOLS IS AVAILABLE ON REQUEST



ROAD CLASSIFICATION  
Primary highway, hard surface ————  
Secondary highway, hard surface ————  
Light-duty road, hard or improved surface ————  
Unimproved road - - - - -  
Interstate Route ———— U.S. Route ———— State Route ————

DANVILLE, IND.  
N3945—W8630/7.5  
1970  
AMS 3663 1 SE—SERIES W851



This map was created by Glenn Grove, IDNR, Division of Water, Ground Water Section. The digital elevation grid of the bedrock surface was subtracted from the grid of the land surface and the resultant grid contoured in ArcInfo. The land surface elevation grid is from 1:24,000 scale digital hypsography by the U.S. Geological Survey, Reston, Virginia, 1999 and 2001. The bedrock surface elevation grid is from a digital map of the bedrock surface topography of Hendricks County. The bedrock surface contouring was done by Marvin Thompson, IDNR, Division of Water, Ground Water Section, 1997, at a scale of 1:24,000.

Contour interval = 25 feet.

Map generated by Glenn E. Grove  
IDNR, Division of Water, Ground Water Section  
December 13, 2001