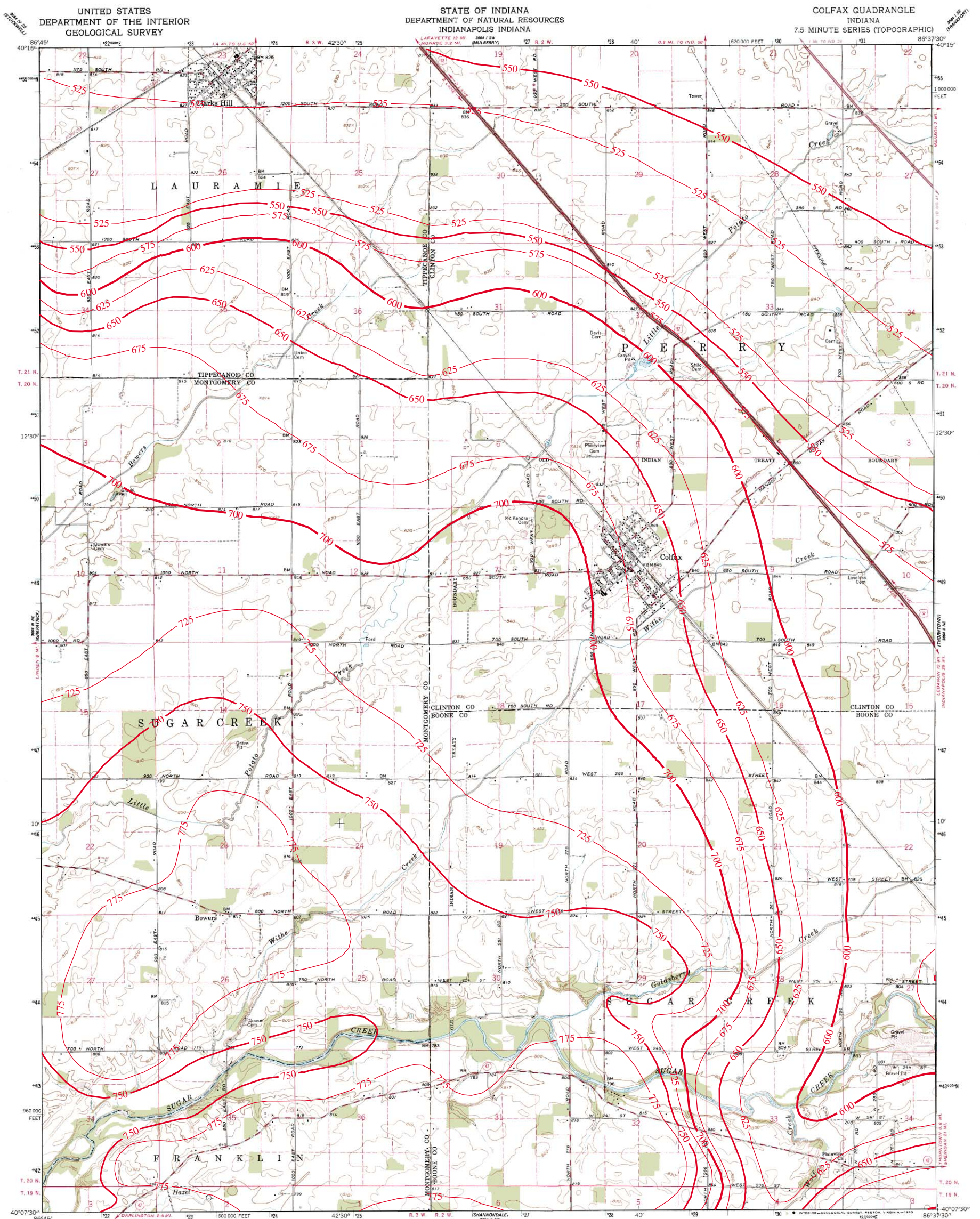


BEDROCK TOPOGRAPHY OF COLFAX QUADRANGLE, INDIANA



Mapped, edited, and published by the Geological Survey
 Control by USGS, NOS/NOAA, and Indiana Flood Control and Water Resources Commission
 Topography by photogrammetric methods from aerial photographs taken 1958. Field checked 1962
 Polyconic projection. 10,000-foot grid based on Indiana coordinate system, west zone
 1000-meter Universal Transverse Mercator grid ticks, zone 16, shown in blue. 1927 North American Datum
 To place on the predicted North American Datum 1983 move the projection lines 1 meter south and 1 meter east as shown by dashed corner ticks
 Fine red dashed lines indicate selected fence and field lines where generally visible on aerial photographs. This information is unchecked

SCALE 1:24,000
 CONTOUR INTERVAL 10 FEET
 NATIONAL GEODETIC VERTICAL DATUM OF 1929

ROAD CLASSIFICATION
 Primary highway, hard surface
 Secondary highway, hard surface
 Light-duty road, hard or improved surface
 Unimproved road
 Interstate Route
 U. S. Route
 State Route

COLFAX, IND.
 N 4007.5—W 8637.5/7.5
 1962
 PHOTOREVISED 1980
 DMA 3604 II NW—SERIES Y851

Bedrock surface map derived from water well records housed in IDNR/DOW, Ground Water Section, oil and gas well records housed in IDNR/DOG, and seismic data from the Indiana Geological Survey (IGS).
 Bedrock contouring by William C. Herring and Glenn E. Grove, Ground Water Section, Division of Water, IDNR, 2002.
 Originally mapped at a scale of 1:24,000 on USGS topographic maps. Bedrock surface contour interval = 25 feet.



Map generated by Glenn E. Grove
 IDNR, Division of Water, Ground Water Section
 August 30, 2002