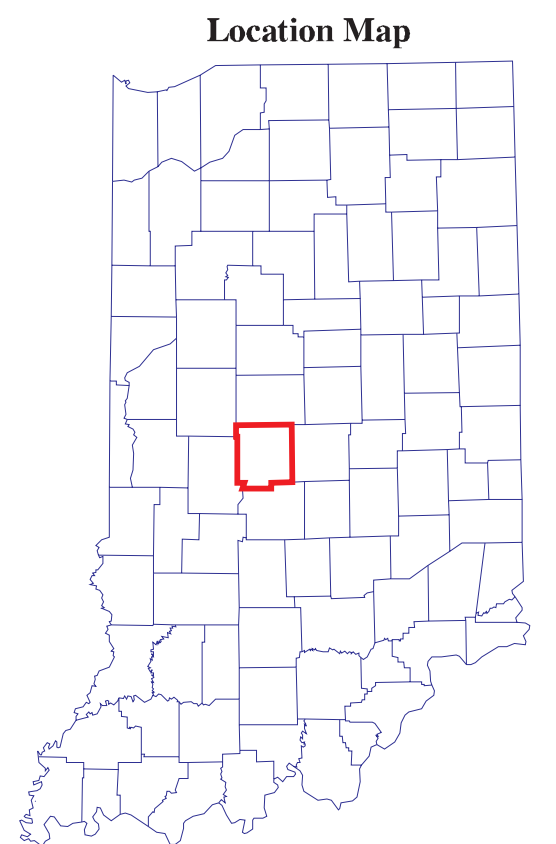
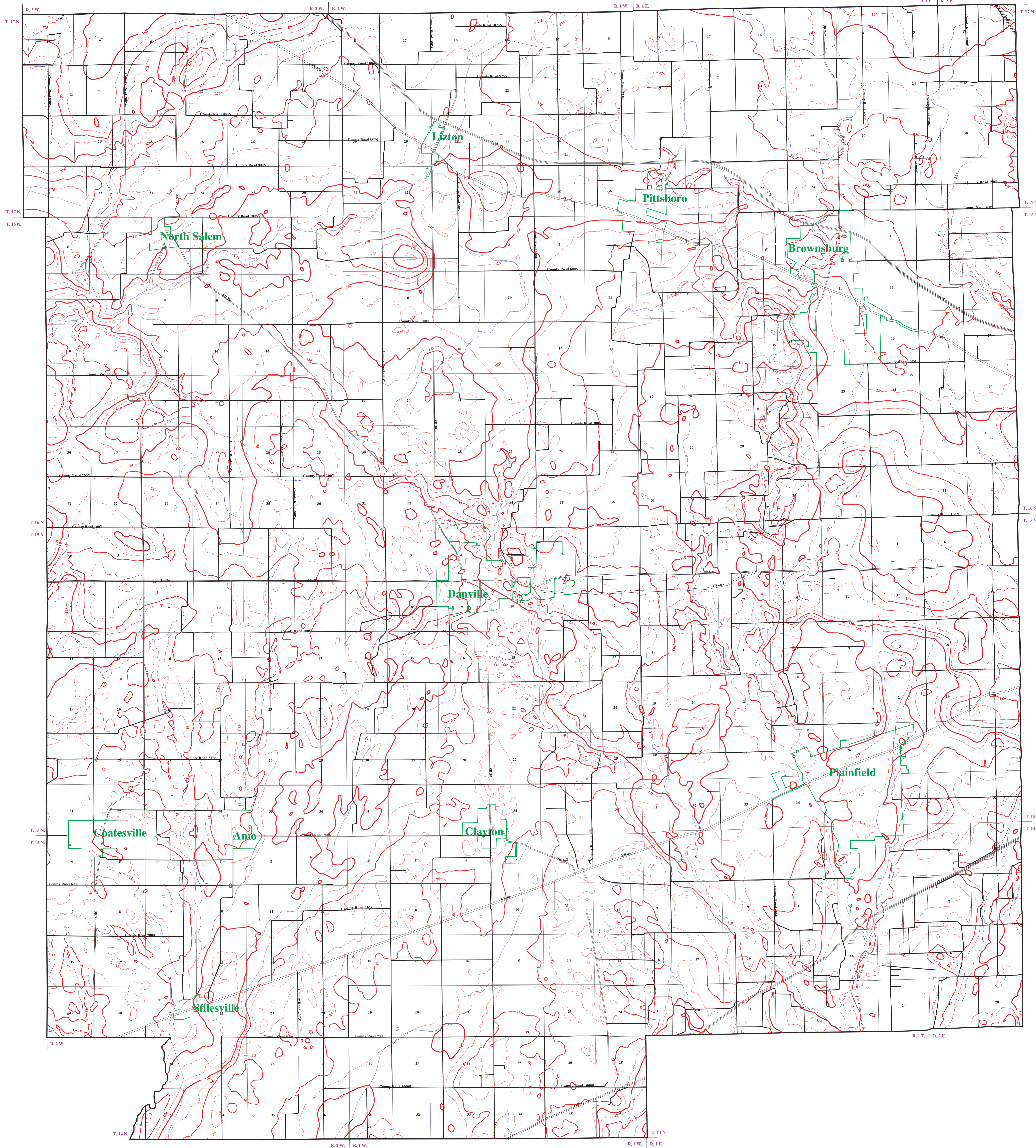


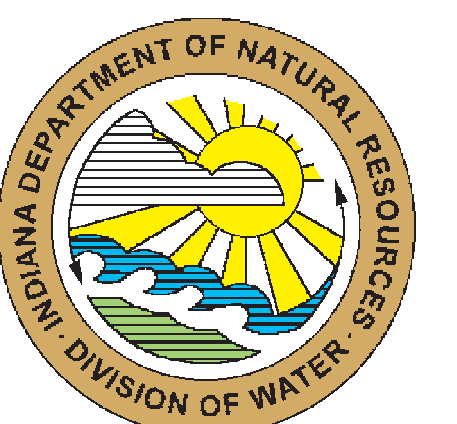
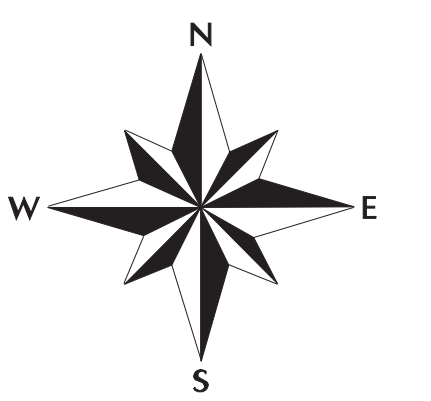
THICKNESS OF UNCONSOLIDATED DEPOSITS OF HENDRICKS COUNTY, INDIANA



- EXPLANATION**
- Tiger files (1999)
 - Interstate Route
 - U.S. & State Route
 - County Road
 - Streams
 - Municipal Boundary

Contour Interval 25 feet

SCALE 1:48,000



This map was created by Glenn Grove, IDNR, Division of Water, Ground Water Section. The digital elevation grid of the bedrock surface was subtracted from the grid of the land surface and the resultant grid contoured in ArcInfo. The land surface elevation grid is from 1:24,000 scale digital hypsography by the U.S. Geological Survey, Reston, Virginia, 1999 and 2001. The bedrock surface elevation grid is from a digital map of the bedrock surface topography of Hendricks County. The bedrock surface contouring was done by Marvin Thompson and others, IDNR, Division of Water, Ground Water Section, 1999, at a scale of 1:24,000.

Map generated by Glenn E. Grove
IDNR, Division of Water, Ground Water Section
January 09, 2002

Originally mapped at a scale of 1:24,000.