

Table 3.--Selected logs of wells and test holes in La Porte County--Continued

Well 38/4W-22M1--Continued

Material	Thick- ness (feet)	Depth (feet)	Remarks
Devonian and Silurian system:			
Middle Devonian and Middle Silurian series:			
Limestone, dense, argillaceous, dolomitic, white to light-gray-	5	335	
Dolomite, fine-crystalline, light-gray and light-tan, with gypsum-----	10	345	
Limestone, hard, dense, gypsiferous, light-gray-----	10	355	
Limestone, fine to medium-crystalline, dolomitic, gray to light-tan-----	10	365	
Dolomite, fine to medium-crystalline, light to dark-brown--	15	380	
Dolomite, fine-crystalline, slightly vuggy, light to dark-brown-----	10	390	
Dolomite, fine-crystalline, slightly argillaceous, slightly gypsiferous, light-grayish-tan to light-brown-----	15	405	
Limestone, dense, argillaceous, white to light-gray, with trace of gray shale-----	5	410	
Limestone, dense, slightly argillaceous, light-gray to light-tan-----	5	415	
Limestone, dense, sandy, slightly dolomitic, white to light-gray-----	5	420	
Limestone, dense, sandy, dolomitic, white to light-gray, with some brownish-green and grayish-brown dense dolomite-----	5	425	
Dolomite, dense, slightly vuggy, gray, blue-gray, and light-tan-----	5	430	
Dolomite, dense, slightly sand, light-tan, white, and light-gray-----	5	435	
Dolomite, dense, light-tan and light-gray-----	15	450	
Dolomite, medium-crystalline, light-tan and dark-grayish-brown-----	4	455	
Dolomite, medium-crystalline, medium-porous, dark-brown-----	5	460	

Table 3.--Selected logs of wells and test holes in La Porte County--Continued

Well 38/4W-22M1--Continued			
Material	Thick- ness (feet)	Depth (feet)	Remarks
Devonian and Silurian system:			
Middle Devonian and Middle			
Silurian series:			
Dolomite, fine-crystalline, slightly vuggy, white to whitish-tan-----	47	507	
Dolomite, medium-crystalline, medium-porous, white to whitish-gray-----	33	540	
Dolomite, medium to coarse-crys- talline, white to whitish-gray	5	545	
Dolomite, fine-crystalline, white, gray, and pink-----	5	550	
Dolomite, fine-crystalline, white and pink-----	10	560	
Dolomite, fine to medium-crys- talline, white and pink-----	10	570	
Dolomite, fine to medium-crys- talline, white, whitish-gray, and yellow-----	15	585	
Dolomite, fine to medium-crys- talline, white, yellow, and pink-----	5	590	
Dolomite, fine to medium-crys- talline, white and whitish- gray-----	40	630	
Dolomite, very fine-crystalline, soft, white to whitish-gray, with some crystalline quartz--	5	635	
Dolomite, very fine-crystalline, gypsiferous, white to whitish- gray, with some crystalline quartz and trace of green shale-----	5	640	
Dolomite, very fine-crystalline, soft to hard, white and whitish-gray-----	5	645	

Well 38/4W-22M2			
Type of record: Driller's log.	Altitude: 615 feet.		
Quaternary system:			
Recent and Pleistocene series:			
Sand-----	8	8	
Sand, muddy-----	7	15	
Sand and some small gravel-----	9	24	
Sand, muddy-----	3	27	
Clay-----	118	145	
Clay, gravelly-----	18	163	

Table 3.--Selected logs of wells and test holes in La Porte County--Continued

Well 38/4W-23J1

Type of record: Driller's log. Altitude: 625 feet.

Material	Thick- ness (feet)	Depth (feet)	Remarks
Quaternary system:			
Recent and Pleistocene series:			
Sand.....	18	18	
Clay.....	62	80	
Sand, fine.....	5	85	
Clay.....	11	96	
Sand, coarse, snow-white.....	10	106	

Well 38/4W-25B2

Type of record: Driller's log. Altitude: 645 feet.

Material	Thick- ness (feet)	Depth (feet)	Remarks
Quaternary system:			
Recent and Pleistocene series:			
Sand.....	12	12	
Clay.....	124	136	
Sand.....	8	144	

Well 38/4W-25G1

Type of record: Driller's log. Altitude: 640 feet.

Material	Thick- ness (feet)	Depth (feet)	Remarks
Quaternary system:			
Recent and Pleistocene series:			
Sand.....	8	8	
Clay.....	82	90	
Sand.....	23	113	

Well 38/4W-25H1

Type of record: Driller's log. Altitude: 645 feet.

Material	Thick- ness (feet)	Depth (feet)	Remarks
Quaternary system:			
Recent and Pleistocene series:			
Muck.....	3	3	
Clay, blue.....	7	10	
Sand, coarse.....	4	14	
Clay, blue.....	2	16	
Quicksand.....	10	26	
Clay, blue.....	29	55	
Sand, very coarse, white.....	7	62	

Well 38/4W-25R1

Type of record: Driller's log. Altitude: 635 feet.

Material	Thick- ness (feet)	Depth (feet)	Remarks
Quaternary system:			
Recent and Pleistocene series:			
Sand.....	20	20	
Clay.....	35	55	
Sand.....	5	60	
Clay.....	15	75	
Sand.....	7	82	

Table 3.--Selected logs of wells and test holes in La Porte County--Continued

Well 38/4W-25R1--Continued

Material	Thick- ness (feet)	Depth (feet)	Remarks
Quaternary system:			
Recent and Pleistocene series:			
Clay-----	18	100	
Sand-----	5	105	
Clay-----	19	124	
Sand-----	16	140	

Well 38/4W-26A1

Type of record: Driller's log.		Altitude: 635 feet.	
Quaternary system:			
Recent and Pleistocene series:			
Sand and gravel-----	30	30	
Clay, blue-----	62	92	
Sand, medium to coarse-----	15	107	

Well 38/4W-26P1

Type of record: Driller's log.		Altitude: 620 feet.	
Quaternary system:			
Recent and Pleistocene series:			
Sand, brown-----	18	18	
Clay, blue-----	79	97	
Sand, white, and gravel-----	6	103	

Well 38/4W-29H3

Type of record: Driller's log.		Altitude: 590 feet.	
Quaternary system:			
Recent and Pleistocene series:			
Fill and top soil-----	3	3	
Sand, not clean-----	7	10	
Sand-----	25	35	
Clay, soft-----	83	118	
Clay, hard-----	31	149	
Devonian system:			
Upper Devonian series:			
Shale, brown-----	70	219	
Devonian and Silurian system:			
Middle Devonian and Middle Silurian series:			
Sand rock, not clean-----	17	236	
Lime rock, hard, not clean-----	47	283	
Mixed rock muddy-----	37	320	
Lime rock, brown-----	5	325	
Lime rock, porous, gray-----	43	368	
Limestone, brown, tight-----	87	455	
Stone, porous, gray-----	13	468	

Table 3.--Selected logs of wells and test holes in La Porte County--Continued

Well 38/4W-29H5

Type of record: Driller's log.

Altitude: 590 feet.

Material	Thick- ness (feet)	Depth (feet)	Remarks
Quaternary system:			
Recent and Pleistocene series:			
Top soil-----	2	2	
Sand, fine-----	4	6	
Sand, muddy-----	10	16	
Sand and gravel-----	11	27	
Clay, soft-----	6	33	

Well 38/4W-29H6

Type of record: Driller's log.

Altitude: 590 feet.

Material	Thick- ness (feet)	Depth (feet)	Remarks
Quaternary system:			
Recent and Pleistocene series:			
Fill-----	2	2	
Soil, sandy-----	3	5	
Mud, soft-----	13	18	
Sand, very fine-----	11	29	
Clay-----	4	33	

Well 38/4W-29K1

Type of record: Driller's log.

Altitude: 609 feet.

Material	Thick- ness (feet)	Depth (feet)	Remarks
Quaternary system:			
Recent and Pleistocene series:			
Surface-----	15	15	
Sand, fine to coarse, yellow, and gravel-----	11	26	
Sand, fine, white-----	24	50	
Sand, fine, and clay-----	3	53	Solid blue clay at 53 feet.

Well 38/4W-29K2

Type of record: Driller's log.

Altitude: 612 feet.

Material	Thick- ness (feet)	Depth (feet)	Remarks
Quaternary system:			
Recent and Pleistocene series:			
Soil and sand-----	15	15	
Sand, coarse, yellow-----	20	35	
Sand, coarse, white-----	12	47	
Clay-----	13	60	
Sand, very fine, and clay-----	43	103	

Well 38/4W-29L1

Type of record: Driller's log.

Altitude: 600 feet.

Material	Thick- ness (feet)	Depth (feet)	Remarks
Quaternary system:			
Recent and Pleistocene series:			
Sand-----	30	30	
Clay-----	70	100	

Table 3.--Selected logs of wells and test holes in La Porte County--Continued

Well 38/4W-29L1--Continued

Material	Thick-ness (feet)	Depth (feet)	Remarks
Quaternary system:			
Recent and Pleistocene series:			
Sand-----	120	220	

Well 38/4W-30K1

Type of record: Driller's log. Altitude: 615 feet.

Quaternary system:			
Recent and Pleistocene series:			
Sand-----	90	90	
Clay and boulders-----	100	190	
Devonian system:			
Upper Devonian series:			
Slate, black-----	32	222	Shale.
Devonian and Silurian system:			
Middle Devonian and Middle Silurian series:			
Lime, brown-----	70	292	
Lime, white and gray, mixed-----	95	387	
Lime, white, and rock-----	243	630	
Salt rock-----	320	950	

Well 38/4W-31R2

Type of record: Driller's log. Altitude: 620 feet.

Quaternary system:			
Recent and Pleistocene series:			
Sand-----	18	18	
Clay and sand-----	8	26	
Clay, blue-----	48	74	
Sand, fine-----	18	92	Suitable for 10-slot screen.
Sand-----	38	130	Suitable for 15-slot screen.

Well 38/4W-33J2

Type of record: Driller's log. Altitude: 627 feet.

Quaternary system:			
Recent and Pleistocene series:			
Sand-----	40	40	
Clay-----	72	112	
Sand, fine-----	28	140	
Clay-----	1	141	
Boulders-----	2	143	
Sand, fine-----	20	163	
Clay-----	1	164	
Hardpan and boulders-----	5	169	
Sand, fine-----	41	210	
Sand and fine gravel-----	15	225	

Table 3.--Selected logs of wells and test holes in La Porte County--Continued

Well 38/4W-33J2--Continued

Material	Thick- ness (feet)	Depth (feet)	Remarks
Quaternary system:			
Recent and Pleistocene series:			
Sand, hard-packed-----	13	238	

Well 38/4W-33R1

Type of record: Driller's log. Altitude: 627 feet.

Quaternary system:			
Recent and Pleistocene series:			
Fill-----	25	25	
Clay, sandy, gray-----	15	40	
Clay, gray-----	20	60	

Well 38/4W-34P1

Type of record: Driller's log. Altitude: 630 feet.

Quaternary system:			
Recent and Pleistocene series:			
Sand, brown-----	10	10	
Clay-----	16	26	
Sand, white-----	6	32	

Well 38/4W-34P2

Type of record: Driller's log. Altitude: 630 feet.

Quaternary system:			
Recent and Pleistocene series:			
Sand, brown-----	18	18	
Sand, white, and clay-----	6	24	
Sand, white-----	9	33	

Well 38/4W-35E3

Type of record: Driller's log. Altitude: 620 feet.

Quaternary system:			
Recent and Pleistocene series:			
Top soil-----	7	7	
Clay-----	81	88	Streak of dirty gravel at 88 feet.
Hardpan-----	32	120	
Sand, dirty-----	5	125	
Clay and sand-----	2	127	
Devonian system:			
Upper Devonian series:			
Shale, brown-----	13	140	

Table 3.--Selected logs of wells and test holes in La Porte County--Continued

Well 38/4W-36B1

Type of record: Driller's log.

Altitude: 630 feet.

Material	Thick- ness (feet)	Depth	Remarks
Quaternary system:			
Recent and Pleistocene series:			
Sand-----	10	10	
Clay, blue-----	50	60	
Clay, hard, blue-----	40	100	
Clay, soft, blue-----	9	109	
Sand and clay-----	3	112	
Clay, soft-----	6	118	
Shale and sand-----	1	119	
Clay, soft, blue, and sand-----	61	180	
Sand-----	8	188	

Well 38/4W-36B2

Type of record: Driller's log.

Altitude: 630 feet.

Material	Thick- ness (feet)	Depth	Remarks
Quaternary system:			
Recent and Pleistocene series:			
Clay, hard, blue-----	40	40	
Clay, soft-----	80	120	
Clay and sand-----	67	187	
Gravel and sand, with shale and clay-----	10	197	

Well 38/4W-36B4

Type of record: Driller's log.

Altitude: 635 feet.

Material	Thick- ness (feet)	Depth	Remarks
Quaternary system:			
Recent and Pleistocene series:			
Clay, yellow-----	18	18	
Clay, blue, sand, and gravel-----	59	77	
Sand, fine, with blue clay balls-----	22	99	
Gravel, coarse, with broken shale and stone-----	2	101	
Sand, very fine, and quicksand-----	27	128	
Sand, fine, and blue clay; with some coarse sand-----	13	141	
Sand, coarse, gravel, and clay; with streaks of quicksand-----	11	152	
Sand, coarse-----	19	171	

Well 38/4W-36F2

Type of record: Driller's log.

Altitude: 640 feet.

Material	Thick- ness (feet)	Depth	Remarks
Quaternary system:			
Recent and Pleistocene series:			
Clay-----	20	20	
Sand-----	2	22	
Clay and silt-----	18	40	

Table 3.--Selected logs of wells and test holes in La Porte County--Continued

Well 38/4W-36F2--Continued

Material	Thick- ness (feet)	Depth (feet)	Remarks
Quaternary system:			
Recent and Pleistocene series:			
Clay-----	48	88	
Sand, coarse, white-----	6	94	

Well 38/4W-36P1

Type of record: Driller's log.

Altitude: 635 feet.

Quaternary system:			
Recent and Pleistocene series:			
Clay, yellow-----	28	28	
Clay, blue-----	25	53	
Gravel-----	1	54	
Clay, blue-----	18	72	
Clay, brown, mixed with sand and gravel-----	11	83	
Sand, clean-----	14	97	
Sand, clean, gray-----	11	108	

Table 4.---Field chemical analyses of water from wells in La Porte County, Indiana (Results in parts per million. Analyses by U. S. Geological Survey; except where otherwise noted.)

Well: See text for description of well-numbering system.

Material: G, gravel; Sd, sand; Sh, shale.

Geologic age: D, Devonian; M, Mississippian; Pl, Pleistocene.

Iron (Fe): U. S. Public Health Service drinking-water standards - 0.3 parts per million for iron and manganese together.

Sulfate (SO₄): U. S. Public Health Service drinking-water standards - 250 parts per million.

Chloride (Cl): U. S. Public Health Service drinking-water standards - 250 parts per million.

Remarks: ICI, analysis by Industrial Chemicals, Inc.; IFC, analysis by International Filter Co.; ISBH, analysis by Indiana State Board of Health.

Well	Material	Geologic Age	Date of Collection	Temperature (°F)	Iron (Fe)	Carbonate (CO ₃)	Bicarbonate (HCO ₃)	Sulfate (SO ₄)	Chloride (Cl)	Hardness as CaCO ₃ (calcium, magnesium)	Remarks
33/4W-14B1	Sd	Pl	9-4-57		>7.5	36	285		328	552	
19H1	Sd	Pl	12-17-59		0.1	19	195	155	16	312	
34/4W-4D2	Sd	Pl	12-17-59		0.5	10	151	50	36	172	
35/1W-17R1	Sd, G	Pl	12-17-59	48	1.0	14	210	160	36	340	
35/2W-3D1	Sd	Pl	12-10-40	52	1.8		246			204	ISBH.
35/4W-31P1	Sh	M?	11-18-59	49		34	278	12	196	80	
31P1	Sh	M?	5-10-60	50	0.1	10	342	20	196	76	
36/1W-5M1	Sd	Pl	11-59	52	0.1	10	161	30	8	160	
18K1	Sd	Pl	11-59	60	0.3	0	205	35	16	168	
23B1	Sd, G	Pl	1-28-47			0	239		4	240	
23B1	Sd, G	Pl	11-59	59	4.0	0	293	150	24	392	
36/2W-7G1	Sd, G	Pl	12-16-59		3.0	10	156	105	24	240	
10M1	Sd	Pl	7-5-57		<0.1	0	234		26	308	
10Q1	Sd	Pl	11-59	55	0.1	19	210	60	26	272	
15A1	Sd, G	Pl	8-29-57		0.1	12	137		20	200	

Table 4.---Field chemical analyses of water from wells in La Porte County, Indiana--Continued

Well	Material	Geologic Age	Date of Collection	Temperature (°F)	Iron (Fe)	Carbonate (CO ₃)	Bicarbonate (HCO ₃)	Sulfate (SO ₄)	Chloride (Cl)	Hardness as CaCO ₃ (calcium, magnesium)	Remarks
36/2W-15A1	Sd, G	P1	11-59	53	0.1	0	293	45	32	304	
19B1	Sd	P1	12-14-59	--	.1	14	151	95	16	232	
26P1	Sd	P1	11-59	54	.1	10	327	80	32	372	
36/3W-3K1	Sd	P1	12-16-59	--	.1	43	283	25	8	292	
3P1	Sd, G	P1	5-24-57	52	.3	0	234	---	6	300	
7C1	Sd	P1	5-24-57	56	.3	0	315	---	16	252	
9R1	Sd	P1	5-24-57	53	5.0	0	173	---	2	176	
9R2	Sd	P1	12-17-59	--	.5	29	220	55	20	256	
10C2	Sd	P1	12-18-59	--	.3	10	181	60	12	200	
10H3	Sd	P1	8-21-57	--	---	0	271	---	6	312	
16C1	Sd	P1	5-24-57	55	.2	0	317	---	4	352	
18E1	Sd, G	P1	6-7-57	55	<.1	5	215	---	4	260	
18E1	Sd, G	P1	12-17-59	51	.1	10	205	50	12	220	
36/4W-5F1	Sd	P1	8-30-57	--	1.0	17	315	---	14	240	ICI.
5J1	Sd, G	P1	6-1-55	--	2.0	0	250	125	3	329	
5J1	Sd, G	P1	12-17-59	--	.1	10	244	40	12	244	
5M1	Sd, G	P1	11-59	58	1.2	0	356	25	16	296	
8A12	Sd	P1	12-17-59	--	.3	34	283	65	12	325	
8A13	Sd	P1	12-17-59	--	.3	14	224	90	16	236	
8A14	Sd	P1	12-17-59	--	.3	24	322	75	20	356	
8C1	Sd	P1	5-24-57	51	1.8	0	332	---	4	328	
8P1	Sd	P1	5-24-57	56	.3	0	234	---	4	256	
10H1	Sd	P1	6-25-57	--	---	7	332	---	28	328	
12N1	Sd, G	P1	6-25-57	--	---	12	195	---	18	268	
12N1	Sd, G	P1	11-59	55	.3	0	303	90	28	292	
12P1	Sd	P1	6-7-57	53	.2	0	224	---	22	304	
14N2	Sd	P1	6-16-57	--	1.5	24	205	---	6	208	
15P1	Sd	P1	11-59	53	.1	0	137	58	44	192	
19E1	Sd, G	P1	11-59	58	1.5	0	322	6	8	224	
21D1	Sd	P1	11-59	54	.8	0	420	75	16	372	

36/4W-25L1	Sd	PI	12-18-59	>7.5	24	166	95	12	264
28N1	Sd, G	PI	12-18-59	.5	19	175	60	12	208
37/1W-	Sd, G	PI	11-59	.1	0	239	38	16	220
5C1	Sd, G	PI	11-59	.2	19	244	65	24	304
6H1	Sd	PI	11-59	.1	24	268	35	16	264
7R1	Sd, G	PI	11-59	.1	10	268	80	12	292
8E1	Sd, G	PI	11-59	.3	12	127	---	10	168
8N1	G, Sd	PI	8-27-57	.8	24	254	55	12	284
9L1	Sd	PI	11-59	.1	0	346	50	12	336
16P1	Sd, G	PI	11-59	.1	0	264	35	8	244
22D1	Sd	PI	11-59	.1	0	351	60	24	360
29J1	G, Sd	PI	11-59	.1	14	220	30	32	216
31C1	Sd	PI	11-59	.1	0	251	---	---	216
37/2W-	Sd	PI	3-27-57	---	0	273	65	16	280
1D2	Sd	PI	11-59	.1	0	175	35	12	188
2A1	Sd, G	PI	12-15-59	.4	19	159	72	15	202
5C1	Sd	PI	4-19-55	.3	0	288	80	---	484
7H1	Sd	PI	12-15-59	.1	10	205	55	12	220
7H1	Sd	PI	12-15-59	.1	24	185	10	16	160
8N1	Sd	PI	12-15-59	.1	14	132	40	24	200
9L1	Sd, G	PI	12-15-59	---	0	---	---	---	316
10L1	Sd, G	PI	6-5-57	---	0	---	---	---	---
11F1	Sd, G	PI	11-59	.8	10	122	35	12	148
12M1	G, Sd	PI	11-59	.3	10	132	35	8	156
12M1	G, Sd	PI	12-14-59	.3	17	222	---	16	268
20P1	Sd, G	PI	8-20-57	.1	10	205	45	12	208
20P1	Sd, G	PI	12-15-59	1.0	0	320	---	20	368
20R1	Sd, G	PI	8-27-57	---	7	95	---	4	148
26D2	Sd, G	PI	6-27-57	.1	0	151	50	20	156
26D2	Sd, G	PI	11-59	.8	10	210	95	24	244
30H1	Sd	PI	12-15-59	.1	14	229	145	96	388
31M1	Sd	PI	12-15-59	1.5	0	325	---	10	316
37/3W-	Sd	PI	8-20-57	.5	19	200	40	8	196
3K3	Sd	PI	12-18-59	.5	7	120	---	---	152
4F1	G, Sd	PI	5-29-57	.5	---	146	---	---	136
4F2	Sd, G	PI	5-29-57	.5	---	---	---	---	---
4H1	Sd	PI	3-28-57	.4	10	159	---	2	180

ICI.

Table 4.--Field chemical analyses of water from wells in La Porte County, Indiana--Continued

Well	Material	Geologic Age	Date of Collection	Temperature (°F)	Iron (Fe)	Carbonate (CO ₃)	Bicarbonate (HCO ₃)	Sulfate (SO ₄)	Chloride (Cl)	Hardness as CaCO ₃ (calcium, magnesium)	Remarks
37/3W-5E1	Sd, G	P1	3-29-57	52	0.7	14	117	---	---	140	
5G1	G, Sd	P1	5-29-57	52	.2	10	151	---	---	160	
5P1	Sd	P1	3-28-57	50	.1	12	122	---	---	180	
5P2	Sd	P1	3-28-57	43	---	7	112	---	4	178	
5P2	Sd	P1	6-18-58	56	.5	0	215	---	8	200	
6P1	Sd, G	P1	3-21-57	51	1.2	12	139	---	4	172	
9R1	Sd	P1	6-26-57	---	---	10	163	---	4	196	
9R2	Sd	P1	12-15-59	---	1.0	14	185	35	36	208	
11N1	Sd	P1	5-19-55	53	5.6	0	263	233	10	445	ICI.
11N1	Sd	P1	12-16-59	---	.1	14	224	70	8	248	
12A1	Sd	P1	12-16-59	---	.1	10	185	35	12	200	
14J1	G, Sd	P1	6-26-57	---	---	0	510	---	12	532	
15H1	Sd	P1	6-26-57	---	---	0	283	---	28	336	
16G1	Sd	P1	6-27-57	---	---	0	300	---	4	316	
18C1	Sd	P1	6-26-57	55	---	0	183	---	16	204	
19J5	Sd	P1	12-15-59	---	1.0	14	220	125	16	308	
22Q1	Sd	P1	6-26-57	---	---	5	107	---	20	124	
24C1	Sd, G	P1	12-16-59	---	.5	0	283	80	16	296	
24P1	Sd, G	P1	12-16-59	---	.1	14	215	110	20	292	
26J2	Sd, G	P1	12-16-59	---	.3	24	200	75	20	260	
27G2	G	P1	12-16-59	---	.3	24	156	10	4	136	
27M2	Sd	P1	8-22-57	---	---	0	190	---	8	164	
29E1	G	P1	6-27-57	56	---	0	204	---	7	272	
31L1	Sd	P1	2-3-60	46	.5	19	298	55	24	316	
33K1	Sd	P1	6-27-57	---	---	7	178	---	12	232	
33L1	Sd, G	P1	12-16-59	---	.3	14	249	90	16	196	
34P1	Sd, G	P1	8-57	57	1.0	0	349	---	20	380	
34P1	Sd, G	P1	12-17-59	46	3.0	0	278	70	16	276	
37/4W-1R1	G	P1	12-16-59	---	1.5	10	200	35	20	184	
2D1	Sd	P1	6-57	---	---	0	98	---	16	120	

37/4W	ZHI	Sd	PI	8-22-57	51	0.3	24	215	10	160
	3Q1	G, Sd	PI	12-16-59	51	0.3	29	293	4	206
	3R1	Sd, G	PI	8-23-57	56	0.1	0	686	12	580
	5H1	Sd	PI	12-16-59	51	0.5	48	303	16	212
	5P2	Sd	PI	5-22-57	52	1.0	7	276	46	68
	7B1	Sd	PI	3-12-57	57	2.0	0	371	16	248
	7B1	Sd	PI	12-17-59	57	0.8	34	234	16	180
	9B1	Sd	PI	5-22-57	57	1.5	0	359	10	328
	10P1	Sd, G	PI	12-17-59	57	0.8	19	234	8	192
	11C1	Sd	PI	6-13-57	52	1.2	10	295	16	328
	11K1	G	PI	3-28-57	52	1.2	12	154	2	184
	11K1	G	PI	12-16-59	51	2.0	10	229	12	204
	13B1	Sd	PI	3-28-57	51	0.5	2	242	10	252
	13B1	Sd	PI	6-18-58	56	1.5	0	386	8	328
	13G1	Sd, G	PI	12-17-59	51	0.5	19	200	12	236
	14P1	Sd	PI	6-27-57	51	1.0	12	163	4	212
	14P1	Sd	PI	12-17-59	51	0.8	14	146	16	176
	18R1	Sd	PI	8-57	51	0.8	10	212	66	248
	26A1	Sd	PI	12-16-59	51	3.0	14	176	12	156
	26R1	Sd	PI	5-22-57	53	8.0	0	346	10	364
	27C1	Sd	PI	8-22-57	50	0.8	0	283	4	288
	32J1	Sd	PI	5-23-57	50	1.2	0	317	6	300
	35Q1	Sd	PI	6-4-57	54	0.1	12	98	30	220
38/1W	7Q1	Sd	PI	11-59	54	0.3	0	307	12	268
	17P1	Sd, G	PI	11-59	54	0.5	0	395	10	348
	18D1	Sd	PI	12-14-59	51	0.1	19	200	12	244
	18D2	Sd	PI	12-14-59	51	0.1	14	176	16	184
	19E1	G, Sd	PI	8-27-57	51	0.3	0	320	320	320
	19E1	G, Sd	PI	11-59	55	0.3	0	429	12	364
	21B1	G, Sd	PI	7-30-58	55	0.2	0	454	4	388
	28B1	G, Sd	PI	6-57	55	0.2	0	288	6	276
	28C1	Sd, G	PI	11-59	55	2.0	0	307	12	232
	28K1	Sd	PI	6-12-57	55	0.9	14	151	8	196
	28L1	Sd, G	PI	11-59	60	0.1	29	229	12	256
	28Q1	Sd, G	PI	6-12-57	58	0.8	12	154	10	180
	29P1	Sd	PI	11-59	54	0.1	10	278	12	268
	31A1	Sd, G	PI	7-5-57	51	0.3	0	156	64	280

Table 4.--Field chemical analyses of water from wells in La Porte County, Indiana--Continued

Well	Material	Geologic Age	Date of Collection	Temperature (°F)	Iron (Fe)	Carbonate (CO ₃)	Bicarbonate (HCO ₃)	Sulfate (SO ₄)	Chloride (Cl)	Hardness as CaCO ₃ (calcium, magnesium)	Remarks
38/1W-33K1	Sd	Pl	8-27-57	53	0.2	0	205		12	240	
	Sd	Pl	11-59		1	38	264	55	20	320	
38/2W-12Q1	Sd	Pl	6-26-57	58		5	190		14	224	
	Sd	Pl	3-13-57	47	.3	0	234			248	
	Sd	Pl	11-59	53	.8	34	264	40		288	
	Sd	Pl	11-59	58	.3	29	244	50	12	264	
	Sd, G	Pl	12-15-59		.5	0	327	30	36	260	
	Sd	Pl	6-26-57			14	283		16	248	
	G	Pl	3-13-57	55	.7	0	300		4	296	
	Sd	Pl	6-26-57			0	317		10	317	
	Sd	Pl	12-15-59		1.5	14	278	35	8	256	
	Sd, G	Pl	11-59	54	.8	0	434	58	24	368	
38/3W-11K1	Sd, G	Pl	8-57			0	212		24	228	
	Sd, G	Pl	6-9-57			0	200		40	252	
	Sd	Pl	6-12-57	57	.1	10	129		2	196	
	Sd, G	Pl	7-5-57	56	1.0	0	268		38	320	
	Sd	Pl	12-15-59		.1	10	185	35	8	172	
	Sd	Pl	12-15-59		1.0	14	215	75	12	240	
	Sd	Pl	6-26-57			0	317		16	344	
	Sd	Pl	6-27-57			0	503		26	412	
	Sd	Pl	12-16-59		4.0	38	283	15	16	260	
	Sd	Pl	12-15-59		.5	24	244	10	8	172	
38/3W-15J1	Sd	Pl	12-16-59		2.0	24	234	65	12	264	
	Sd	Pl	12-15-59		.5	29	312	20	16	228	
	Sd	Pl	12-15-59	50	.5	0	63	35	12	108	
	Sd	Pl	12-15-59		1.0	14	317	10	16	220	
	Sd	Pl	12-16-59		1.5	19	229	95	16	288	
	Sd, G	Pl	12-16-59		1.0	14	210	10	8	164	
	Sd, G	Pl	12-15-59		1.0	19	254	5	16	172	

38/3W-33D2	G, Sd	P1	12-15-59	52	1.5	24	171	30	10	184
35B1	G	P1	12-16-59	52	1.0	24	176	115	8	268
35K1	Sd, G	P1	12-16-59	52	1.0	14	215	10	12	172
38/4W-13Q1	Sh	D	10-2-56	52	3.5	0	771	632	632	164
13Q1	Sh	D	6-11-57	51	7.5	65	427	434	434	80
13Q3	Sd	P1	6-11-57	51	1.0	0	117	14	14	108
23J1	Sd	P1	12-11-59	52	1.0	24	224	10	120	105
25B1	Sd	P1	8-57	52	1.0	0	195	500	500	344
25Q1	Sd	P1	3-57	52	1.0	0	127	8	8	216
25R1	Sd	P1	6-11-57	52	1.0	5	307	15	16	132
25R1	Sd	P1	12-11-59	52	1.0	34	312	30	125	164
26A1	Sd	P1	12-11-59	52	1.0	10	346	25	108	104
26P1	Sd, G	P1	12-10-59	52	1.0	29	371	74	74	300
26P1	Sd, G	P1	6-13-57	52	1.0	0	390	22	22	288
31R2	Sd	P1	3-13-57	52	1.0	0	419	12	36	256
31R2	Sd	P1	12-10-59	53	1.0	0	422	105	32	248
33J2	Sd, G	P1	5-22-57	51	1.0	0	322	46	440	268
34A1	Sd	P1	12-10-59	51	1.0	38	46	2	2	376
34J1	Sd	P1	5-22-57	51	1.0	7	127	16	16	92
34P2	Sd	P1	8-57	51	1.0	10	366	90	108	120
35E2	Sd	P1	12-10-59	51	1.0	29	376	134	134	328
36B2	Sd, G	P1	3-12-57	50	1.0	0	388	8	8	264
36E1	Sd, G	P1	3-12-57	50	1.0	0	232	88	88	292
36F1	Sd	P1	8-57	50	1.0	0	371	5	16	288
36F2	Sd	P1	12-10-59	50	1.0	10	386	50	16	248
36G1	Sd	P1	12-10-59	50	1.0	0	300	300	300	240
36J2	Sd	P1	9-57	50	1.0	0	248	248	248	248

IFC.

Table 5.--Water levels in observation wells in La Porte County, Indiana
(In feet below land-surface datum, except as noted. Water level: e, estimated; h,
tape measurement)

La Porte 1. (37/2W-28K2). City of La Porte. NW $\frac{1}{4}$ SE $\frac{1}{4}$ sec. 28, T. 37 N., R. 2 W. Dug public-supply water-table well in sand and gravel, diameter 50 feet, depth 25 feet. Land-surface datum is 748 feet above msl. Highest water level is 0.52 above lsd, June 24, 1950; lowest 17.30 below lsd, Aug. 23, 1947. Records available: 1942-58. Affected by pumping.

Date	Water level	Date	Water level	Date	Water level	Date	Water level
1942		Mar. 20	13.34	1944		Oct. 14	6.28
		27	14.80			21	7.60
July 4	11.90	Apr. 3	12.30	Jan. 1	5.70	28	6.90
11	12.30	10	13.30	8	6.21	Nov. 4	6.08
18	15.40	17	12.90	15	6.21	11	6.68
23	13.25	24	12.90	22	6.29	18	7.68
Aug. 25	15.10	May 1	12.90	29	5.70	25	7.68
1	12.20	8	13.60	Feb. 5	6.31	Dec. 2	7.59
8	8.80	15	12.40	12	6.28	9	7.59
15	11.50	22	11.16	19	6.29	16	7.68
22	13.40	29	12.74	26	5.60	23	8.08
29	11.12	June 5	13.06	Mar. 4	6.60	30	7.68
Sept. 5	11.06	12	13.20	11	6.46		
12	11.68	19	14.50	18	6.60	1945	
19	12.02	26	14.70	25	6.29	Jan. 6	7.68
26	12.00	July 3	14.80	Apr. 1	6.28	13	8.18
Oct. 3	11.45	10	13.00	8	5.68	20	8.68
10	11.27	17	12.11	15	6.08	27	9.18
17	11.90	26	12.72	22	6.28	Feb. 3	9.68
24	11.91	31	12.61	29	6.28	10	9.09
31	12.05	Aug. 7	12.79	May 6	6.51	17	9.06
Nov. 7	12.30	14	12.71	13	5.80	24	8.68
14	11.80	21	13.50	20	4.84	Mar. 3	8.69
21	12.10	28	13.60	27	6.29	10	8.28
28	11.80	Sept. 4	12.70	June 3	7.29	17	8.28
Dec. 5	12.30	11	13.20	10	4.68	24	8.28
12	12.90	18	12.04	17	7.28	31	8.28
19	12.90	25	12.60	24	7.57	Apr. 7	7.68
26	11.80	Oct. 2	13.06	July 1	10.20	14	8.28
		9	10.60	8	12.18	21	8.68
1943		16	8.51	15	7.48	28	7.68
		25	6.61	22	7.05	May 5	7.68
Jan. 2	11.50	Nov. 1	7.41	29	5.48	12	6.68
9	11.80	6	6.70	Aug. 5	11.28	19	7.29
16	12.50	13	4.61	12	14.70	26	7.21
23	13.60	20	8.61	19	7.60	June 2	8.21
30	13.40	27	8.01	26	10.68	9	8.60
Feb. 6	12.40	Dec. 4	7.71	Sept. 2	6.63	16	8.61
13	12.10	11	5.91	9	6.28	23	8.61
20	12.30	18	5.70	16	5.91	30	8.21
27	13.50	25	6.20	23	7.08	July 7	7.26
Mar. 6	14.50			30	6.28	14	8.22
13	14.30			Oct. 7	6.68		

Table 5.--Water levels in observation wells in La Porte County--Continued

La Porte 1--Continued

Date	Water level	Date	Water level	Date	Water level	Date	Water level
1945		June 1	6.65	Apr. 26	8.20	Mar. 13	12.87
		8	8.70	May 3	8.21	20	11.20
July 21	10.70	15	7.68	10	7.70	27	9.28
28	7.54	22	7.24	17	7.70	Apr. 3	12.70
Aug. 4	6.18	29	7.68	24	7.68	10	12.45
11	7.45	July 6	12.22	31	4.28	17	12.37
18	7.28	13	13.70	June 7	8.70	24	10.70
25	7.30	20	14.70	14	8.70	May 1	14.95
Sept. 1	7.41	27	12.70	21	8.28	8	10.12
8	8.28	Aug. 3	10.28	28	9.48	15	9.03
15	6.30	10	9.70	July 5	12.68	22	15.20
22	6.70	17	10.70	12	12.70	29	14.53
29	6.28	24	10.90	19	7.70	June 5	13.87
Oct. 6	3.70	31	7.70	26	13.70	12	12.70
13	11.48	Sept. 7	11.66	Aug. 2	11.68	19	12.28
20	11.28	14	12.68	9	12.70	26	12.45
27	6.70	21	10.09	16	13.70	July 3	10.95
Nov. 3	7.22	28	8.20	23	17.30	10	13.70
10	6.70	Oct. 5	8.83	30	5.20	17	16.53
17	6.63	12	9.09	Sept. 6	10.31	24	12.53
Dec. 1	6.70	19	9.70	14	10.28	31	10.03
8	7.28	26	9.29	20	10.70	Aug. 7	14.70
15	7.20	Nov. 2	9.67	27	9.70	14	12.78
22	8.42	9	9.70	Oct. 4	12.28	21	14.03
29	7.01	16	9.70	11	11.70	28	12.78
1946		23	9.28	18	9.70	Sept. 4	8.53
		30	9.20	25	13.26	11	7.78
Jan. 5	6.68	Dec. 7	9.70	Nov. 1	13.70	18	13.53
12	7.28	14	9.29	8	11.68	25	12.28
19	7.20	21	9.70	15	8.70	Oct. 2	10.03
26	8.12	28	9.80	22	12.68	9	8.53
Feb. 2	8.18			29	11.06	16	11.03
9	7.18	1947		Dec. 6	10.68	23	3.20
16	7.70	Jan. 4	9.11	13	12.29	30	0.66
23	7.06	11	8.51	20	12.28	Nov. 6	0.45
Mar. 2	7.11	18	9.09	27	10.68	13	0.49
9	7.41	25	9.11			20	0.45
16	5.70	Feb. 1	8.70	1948		27	0.70
23	6.20	8	8.26	Jan. 3	8.28	Dec. 4	0.45
30	5.68	15	8.70	10	11.70	11	0.54
Apr. 6	6.22	22	9.70	17	12.28	18	0.62
13	6.68	Mar. 1	9.21	24	14.70	24	0.53
20	8.32	8	11.28	31	13.72	31	0.62
27	8.90	15	8.70	Feb. 2	10.70		
May 4	8.11	22	9.28	14	10.03	1949	
11	8.68	29	9.42	21	11.20	Jan. 8	0.53
18	8.41	Apr. 12	6.48	28	11.95	15	0.62
25	8.11	19	10.28	Mar. 6	9.70	22	0.53

Table 5.--Water levels in observation wells in La Porte County--Continued

La Porte 1--Continued

Date	Water level	Date	Water level	Date	Water level	Date	Water level
1949		Dec. 17	0.76	Nov. 4	1.10	Sept. 22	2.71
		24	0.20	11	1.35	29	0.66
Jan. 27	0.29	31	0.12	18	1.50	Oct. 6	0.21
29	+0.05			25	1.25	13	0.23
Feb. 5	0.16	1950		Dec. 2	1.40	20	0.48
12	6.98			9	1.50	27	0.17
19	0.32	Jan. 7	+0.03	16	13.10	Nov. 3	0.07
26	0.07	14	0.16	23	6.15	10	+0.05
Mar. 5	+0.03	21	0.43	30	3.50	17	+0.15
12	0.22	28	0.24			24	0.51
19	0.26	Feb. 4	0.12	1951		Dec. 1	0.04
26	0.22	11	0.12			8	0.02
Apr. 2	0.07	18	0.16	Jan. 6	0.50	15	+0.02
11	0.24	25	5.20	13	8.20	22	+0.06
16	0.12	Mar. 4	4.90	20	3.20	29	0.01
23	0.16	11	1.49	27	1.16		
30	0.14	18	0.24	Feb. 3	2.60	1952	
May 7	0.20	25	0.02	10	3.62		
14	0.20	Apr. 1	0.01	17	3.54	Jan. 5	0.35
21	0.16	8	0.16	24	3.30	12	0.01
28	0.07	15	0.24	Mar. 3	3.50	19	+0.46
June 4	0.26	22	0.16	10	4.20	26	+0.20
11	0.39	29	0.08	17	4.10	Feb. 2	+0.10
18	0.28	May 6	0.21	24	5.60	9	+0.20
25	0.12	13	0.19	31	4.10	16	+0.08
July 2	0.20	20	0.30	Apr. 7	2.62	23	+0.11
9	0.28	27	0.21	14	2.30	Mar. 1	0.05
16	0.07	June 3	+0.50	21	3.40	8	0.11
23	0.28	10	0.05	28	3.30	15	0.19
30	0.18	17	+0.35	May 5	3.20	22	0.15
Aug. 6	0.18	24	+0.52	12	1.55	29	0.13
13	0.20	July 1	+0.09	19	2.82	Apr. 5	0.15
20	0.20	8	+0.11	26	3.15	12	+0.09
27	0.28	15	4.19	June 2	3.40	19	0.27
Sept. 3	0.12	22	0.20	9	3.60	26	0.15
10	+0.03	29	0.10	16	7.40	May 3	0.17
17	0.13	Aug. 5	3.50	23	4.05	10	0.23
24	+0.01	12	4.30	30	5.45	17	0.21
Oct. 1	0.20	19	1.80	July 7	4.25	24	0.19
8	0.24	26	7.65	14	4.15	31	0.07
15	0.24	Sept. 2	3.80	21	5.20	June 7	+0.05
22	0.28	9	4.40	28	3.40	14	+0.04
29	0.28	16	2.90	Aug. 4	3.70	21	0.65
Nov. 5	1.03	23	8.40	11	2.25	28	0.21
12	0.72	30	4.20	18	2.95	July 5	1.20
19	0.45	Oct. 7	8.30	25	7.25	12	0.87
26	0.59	14	1.10	Sept. 1	3.02	19	0.62
Dec. 3	0.57	21	0.80	8	3.23	26	0.90
10	0.34	28	2.85	15	3.44	Aug. 2	0.56

Table 5.--Water levels in observation wells in La Porte County--Continued

La Porte 1--Continued

Date	Water level	Date	Water level	Date	Water level	Date	Water level
1952		June 13	1.04	July 3	1.14	May 14	1.42
		20	1.21	10	1.02	21	1.42
Aug. 9	0.00	27	1.26	17	1.00	28	1.24
16	0.11	July 4	1.30	24	1.35	June 4	2.38
23	+0.11	11	1.41	31	1.49	11	1.43
30	0.00	18	3.08	Aug. 7	1.37	18	2.24
Sept. 6	0.90	25	2.03	14	1.27	25	1.44
13	0.60	Aug. 1	2.09	21	1.00	July 2	1.15
20	+0.10	8	1.91	25	5.38	9	1.18
27	+0.06	15	1.83	28	0.02	16	0.97
Oct. 4	0.51	22	2.45	Sept. 4	1.04	25	1.33
11	0.19	29	8.81	11	1.28	31	1.29
18	0.17	Sept. 5	6.93	18	1.10	Aug. 8	0.96
25	0.16	12	0.91	25	1.22	13	1.16
Nov. 1	+0.03	19	0.95	Oct. 2	1.10	20	1.34
8	0.00	26	1.49	9	0.64	27	1.21
15	0.01	Oct. 3	0.97	16	1.18	Sept. 3	1.23
22	0.05	10	1.23	23	0.73	10	1.21
29	0.49	17	1.21	30	0.50	17	1.27
Dec. 6	0.00	24	1.32	Nov. 6	0.73	25	0.88
13	0.11	31	1.13	13	0.87	Oct. 2	0.84
20	0.05	Nov. 7	0.14	20	0.84	9	0.52
27	0.06	14	0.26	27	0.51	16	0.47
		21	0.12	Dec. 4	1.11	22	0.56
1953		28	0.20	11	0.39	30	0.53
		Dec. 5	+0.29	18	1.00	Nov. 5	0.54
Jan. 3	0.05	12	+0.19	25	0.81	19	0.93
10	0.29	19	0.87			Dec. 31	1.44
17	0.07	26	0.85	1955			
24	0.05			Jan. 1	0.96	1956	
31	0.11	1954		8	1.08	Jan. 9	1.73
Feb. 7	0.31	Jan. 31	1.75	15	1.01	15	1.92
14	0.02	Feb. 28	0.66	22	1.60	22	1.87
21	0.28	Mar. 6	0.85	29	1.81	28	1.44
28	0.65	Mar. 20	0.97	Feb. 5	1.38	Feb. 4	1.38
May. 7	0.85	Apr. 3	1.15	12	1.49	11	1.44
14	0.47	10	1.15	19	1.59	18	1.84
21	0.66	17	0.97	26	1.40	25	1.01
28	0.15	24	0.28	Mar. 4	0.97	Mar. 3	1.44
Apr. 4	0.81	May 3	0.19	12	0.97	10	1.85
11	0.95	8	1.13	19	1.91	17	2.05
18	0.97	15	1.20	26	1.20	24	2.27
25	0.99	22	1.24	Apr. 2	1.58	Apr. 7	2.33
May 2	1.00	29	0.95	9	1.93	14	2.05
9	0.96	June 5	1.69	16	2.26	21	2.12
16	0.88	12	1.45	23	1.87	28	1.11
23	0.85	19	7.30	30	1.66	May 6	1.52
30	0.92	26	4.75	May 7	1.42	13	1.63
June 6	1.02						

Table 5.--Water levels in observation wells in La Porte County--Continued

La Porte 1--Continued

Date	Water level	Date	Water level	Date	Water level	Date	Water level
1956		1957		Sept. 9	1.03	May 5	1.09
May 20	1.48	Jan. 7	0.78	16	0.97	12	1.18
27	1.59	14	0.81	23	1.01	19	1.22
June 3	1.57	21	0.83	30	1.01	26	1.08
9	1.51	28	0.84	Oct. 7	0.95	June 2	1.08
16	1.33	Feb. 4	0.83	14	0.89	9	1.16
30	1.39	11	0.63	21	0.90	16	1.05
July 6	1.23	18	0.75	28	0.99	23	1.14
15	1.42	25	0.74	Nov. 4	0.76	30	1.16
21	1.44	Mar. 4	0.77	11	0.81	July 7	0.92
29	1.27	11	0.89	18	0.75	14	1.11
Aug. 6	1.46	18	0.76	25	0.83	21	1.15
13	1.09	25	0.82	Dec. 2	0.94	28	1.19
21	1.12	Apr. 1	1.04	9	0.97	Aug. 4	0.94
Sept. 4	0.97	8	0.78	16	1.01	11	0.81
8	0.74	15	1.07	23	0.78	18	1.07
17	0.77	22	1.11	30	0.80	25	1.19
24	0.84	29	1.11	1958		Sept. 1	1.21
Oct. 1	0.97	May 6	1.32	Jan. 6	0.79	8	1.11
8	0.60	13	1.29	13	0.88	15	1.06
15	0.52	20	1.19	20	0.87	22	0.87
22	0.68	27	1.44	27	0.77	29	0.93
29	0.52	June 3	1.51	Feb. 3	0.76	Oct. 6	0.82
Nov. 5	0.69	10	1.35	10	0.80	13	0.79
12	0.81	17	1.42	17	0.84	20	1.41
19	0.77	24	1.22	24	0.73	27	0.65
26	0.82	July 1	1.33	Mar. 3	0.48	Nov. 3	0.81
Dec. 3	0.83	8	1.07	10	0.76	10	0.84
10	0.82	15	1.11	17	0.67	17	0.87
17	0.87	22	1.02	24	0.89	24	0.90
24	0.73	29	1.05	Apr. 7	+0.11	Dec. 1	0.93
31	0.77	Aug. 5	1.10	14	0.97	8	0.99
		12	0.99	21	1.01	15	0.77
		19	1.03	28	0.99	22	0.91
		26	1.19			29	0.90
		Sept. 2	0.91				

La Porte 2. (33/3W-10Q1). State of Indiana. Kankakee State Game Preserve. SW $\frac{1}{4}$ SE $\frac{1}{4}$ sec. 10, T. 33 N., R. 3 W. Drilled unused artesian well in sand and gravel. diameter 6 inches, reported depth 116 feet. Land-surface datum is 671 feet above msl. Recording gage installed June 11, 1953; removed Oct. 13, 1954. Highest water level is 0.34 below lsd, Apr. 8, 1950; lowest 7.52 below lsd, July 25, 1955. Records available: 1942-58.

1942		July 15	5.93	Aug. 15	6.07	Oct. 1	6.30
		23	6.20	Sept. 1	6.38	16	6.20
July 2	5.89	31	6.23	15	6.54	31	6.06

Table 5.--Water levels in observation wells in La Porte County--Continued

La Porte 2--Continued

Date	Water level	Date	Water level	Date	Water level	Date	Water level
1942		Dec. 15	6.30	Feb. 14	4.65	Jan. 16	5.10
Nov. 15	5.34			21	5.07	23	5.07
Dec. 1	5.14	1945		28	5.29	29	5.07
16	5.62	Jan. 15	6.20	Mar. 7	5.45	Feb. 6	5.25
31	4.27	Feb. 1	6.20	14	5.43	20	5.10
1943		19	6.00	21	5.55	27	4.50
Jan. 15	3.71	Mar. 19	5.40	28	5.07	Mar. 5	4.17
Feb. 1	4.99	Apr. 1	5.40	Apr. 4	4.52	12	4.33
15	3.55	15	4.80	11	4.03	20	4.20
Mar. 1	3.84	May 2	4.40	19	3.86	26	2.90
15	4.14	June 5	4.20	25	3.15	Apr. 2	2.85
Apr. 1	3.32	Aug. 8	6.82	May 2	3.00	9	2.90
15	3.93	Sept. 14	6.20	11	3.40	16	3.15
30	4.02	28	5.40	16	3.52	23	3.20
May 15	2.74	Oct. 14	5.10	23	3.29	30	4.00
June 1	1.07	28	5.40	30	3.27	May 11	3.50
15	2.49	Nov. 28	5.20	June 13	3.20	14	2.80
July 1	4.20	Dec. 14	5.40	20	3.55	21	2.90
15	4.74	1946		27	4.14	June 4	4.07
Aug. 1	4.58	Jan. 14	4.00	July 4	4.60	11	4.50
16	5.23	30	4.80	11	5.10	25	4.90
Sept. 1	5.32	Feb. 26	4.60	18	5.35	July 6	4.90
17	5.33	Sept. 6	6.84	25	5.68	16	5.60
30	5.63	13	6.90	Aug. 8	6.10	23	5.70
Oct. 15	5.93	20	7.05	15	6.35	30	6.80
Nov. 1	5.87	27	7.05	22	6.60	Aug. 6	5.40
1944		Oct. 4	7.15	29	6.55	27	6.60
Jan. 15	5.90	11	7.22	Sept. 1	6.30	Sept. 3	6.70
Feb. 5	5.70	18	7.08	12	6.03	10	6.70
16	6.90	25	7.03	19	6.10	17	7.00
Mar. 1	4.90	Nov. 1	6.40	26	5.98	Oct. 15	7.00
Apr. 10	4.60	8	6.47	Oct. 3	6.10	23	7.05
30	1.90	22	6.30	10	6.18	30	6.98
May 15	2.90	Dec. 6	6.28	17	6.25	Nov. 6	6.89
June 1	3.20	13	5.90	24	6.55	13	6.40
15	4.50	20	5.87	31	6.10	20	6.67
July 1	5.40	27	5.90	Nov. 7	6.00	27	6.66
Aug. 1	6.30	1947		14	5.90	Dec. 4	6.65
15	6.80	Jan. 3	5.87	21	5.60	11	6.68
Sept. 7	5.30	10	5.88	28	5.60	18	6.30
16	4.85	17	5.52	Dec. 5	5.30	25	6.28
Oct. 1	6.90	24	5.45	12	5.18		
Nov. 1	6.60	31	5.17	19	5.15	1949	
15	5.70	Feb. 7	4.67	26	5.40	Jan. 1	6.09
						8	5.69
				1948		Feb. 5	4.00
				Jan. 1	5.15	12	4.05
				9	5.05	17	3.83

Table 5.--Water levels in observation wells in La Porte County--Continued

La Porte 2--Continued

Date	Water level	Date	Water level	Date	Water level	Date	Water level
1949		Jan. 14	3.32	Dec. 16	4.63	Nov. 10	4.34
			2.87		23	17	3.50
Feb. 19	3.58		2.41		30	24	3.27
	3.70	Feb. 4	2.49			Dec. 1	3.32
Mar. 5	3.76		2.69	1951		8	3.23
	3.69		2.44			15	3.99
19	4.10		2.51	Jan. 6	4.17	22	3.65
	4.34	Mar. 4	2.60		13	29	4.33
Apr. 2	4.34		2.00		20		
	4.98		2.05		27		
May 7	5.74		2.16	Feb. 3	4.41	1952	
	5.77	Apr. 1	1.36		10	Jan. 5	3.13
	5.45		0.34		17	12	3.25
June 4	5.66		0.56		24	19	2.70
	5.68		1.16	Mar. 3	3.58	26	2.70
11	6.61		1.32		10	Feb. 2	2.66
	5.69	May 6	1.68		17	9	2.56
18	5.80		2.02		24	16	2.84
25	5.80		3.07		31	23	3.32
July 2	6.62		2.7	Apr. 7	4.19	Mar. 1	3.72
	6.63		3.45		14	8	4.00
9	6.64	June 3	3.68		21	15	3.82
16	6.65		3.69		28	22	3.56
23	6.65		3.97	May 5	3.89	29	3.70
30	6.65		2.64		12	Apr. 5	3.86
Aug. 6	6.67	July 1	2.87		19	12	3.72
	6.67		3.32		26	19	3.40
13	6.68		4.01	June 2	4.24	26	3.34
20	6.68		3.42		9	May 3	3.72
27	6.80	Aug. 5	4.08		23	10	4.04
Sept. 3	6.70		4.56	July 7	5.42	17	4.24
	6.69		4.08		14	24	4.14
10	6.69		5.00		21	31	3.92
17	5.94	Sept. 2	5.18		28	June 7	4.34
24	6.62		5.37	Aug. 4	4.87	14	4.14
Oct. 1	6.99		5.48		18	21	4.06
	6.63		5.60		25	28	4.48
8	6.63	Oct. 7	5.72	Sept. 1	5.45	July 5	5.02
15	6.55		5.79		8	12	5.30
22	6.46		5.88		15	19	5.46
29	6.45		5.93	Oct. 6	5.81	Aug. 9	6.06
Nov. 6	6.40	Nov. 4	5.98		13	16	6.14
	6.40		5.96		20	23	6.32
12	6.30		5.86	Oct. 6	5.65	30	6.48
19	6.20		5.70		13	Sept. 6	6.64
26	6.12	Dec. 2	5.49		20	13	6.78
Dec. 3	6.15		4.60	Nov. 3	4.30	20	6.84
	6.14					27	6.88
10	6.00						
17	5.01						
24	4.16						
31							
1950							
Jan. 6	3.70						

Table 5.--Water levels in observation wells in La Porte County--Continued

La Porte 2--Continued

Date	Water level	Date	Water level	Date	Water level	Date	Water level
1952		Nov. 15	6.91	1955		Dec. 19	5.22
		25	6.77			26	5.23
Oct. 4	6.98	Dec. 1	6.79	Jan. 1	3.50		
11	6.92	14	6.60	10	2.60	1956	
18	6.80	15	6.62	16	2.90		
25	6.80			24	3.52	Jan. 2	5.25
Nov. 1	6.78	1954a/		31	3.68	9	5.42
8	6.76			7	3.90	16	5.48
15	6.76	Jan. 30	h6.30	14	4.15	23	5.63
22	6.60	Feb. 2	h6.30	21	4.08	30	5.75
29	6.45	9	h6.31	28	3.48	Feb. 6	5.70
Dec. 6	6.40	15	h6.35	Mar. 7	3.18	13	5.58
13	6.34	Mar. 2	h5.15	14	3.38	20	5.34
20	6.28	9	h5.05	21	3.64	27	4.53
27	6.12	16	h5.15	28	3.52	Mar. 6	4.10
		23	h5.18	Apr. 4	3.56	12	4.00
1953a/		30	h4.26	11	3.96	19	4.24
Jan. 1	h6.10	Apr. 1	h4.22	18	4.14	26	4.43
10	h6.06	5	h4.22	25	3.90	Apr. 2	4.52
17	h5.90	13	h4.13	May 2	4.00	9	4.64
24	h5.72	19	h4.04	9	4.42	16	4.86
31	h5.56	May 3	h3.60	16	4.70	23	5.14
Feb. 7	h5.60	10	h3.70	23	4.95	30	4.30
14	h5.64	17	h4.90	30	4.90	May 7	3.42
21	h5.56	24	h4.70	June 6	5.10	14	2.73
28	h5.30	31	h4.90	13	4.55	21	2.74
Mar. 7	h4.94	June 7	h4.70	20	4.68	28	3.22
16	h4.80	10	h4.85	July 18	5.52	June 4	3.68
21	h4.40	14	h5.00	25	7.52	11	4.33
28	h4.60	24	h5.09	Aug. 1	6.04	18	4.66
June 11	h5.27	July 2	h5.54	8	6.10	28	4.87
July 2	h5.46	12	h4.80	15	6.32	July 2	5.21
17	h5.95	19	h5.10	22	6.45	9	5.38
31	6.30	24	h5.50	29	6.60	16	5.60
Aug. 1	6.30	Aug. 2	h5.60	Sept. 5	6.38	23	5.73
5	6.15	9	h5.90	12	6.53	30	5.78
15	6.30	16	h6.00	19	6.61	Aug. 6	5.98
27	6.65	24	h5.94	26	6.52	13	6.15
Sept. 1	6.70	30	h5.90	Oct. 3	6.68	27	6.30
15	7.00	Sept. 6	h6.00	10	5.93	Sept. 10	6.53
23	7.10	13	h6.20	17	5.75	17	6.57
Oct. 1	7.15	20	h6.30	24	5.56	24	6.73
15	7.15	27	h6.40	31	5.60	Oct. 1	6.67
21	7.25	Oct. 13	h3.85	Nov. 14	5.30	8	6.81
30	6.95	Dec. 1	h3.15	21	5.45	15	6.81
Nov. 1	6.95	13	h3.97	28	5.35	22	6.78
6	7.01	20	h3.98	Dec. 5	5.32	29	6.68
		27	h4.05	12	5.24	Nov. 5	6.67

a/ Daily 2 a.m. water level from recorder graph

Table 5.--Water levels in observation wells in La Porte County--Continued

La Porte 2--Continued

Date	Water level	Date	Water level	Date	Water level	Date	Water level
1956		May 6	3.33	Dec. 10	4.32	June 16	4.41
		13	3.67	16	4.33	22	4.41
Nov. 12	6.58	20	3.84	23	3.33	30	4.69
19	6.51	27	4.04	30	3.11	July 7	4.95
26	6.39	June 3	4.45			14	4.76
Dec. 3	6.35	10	4.72	1958		21	4.71
10	6.30	17	4.47	Jan. 6	3.29	26	5.06
17	6.25	24	4.65	13	3.68	Aug. 4	4.79
24	6.18	30	4.54	20	4.05	11	4.54
31	6.13	July 15	4.96	27	4.17	18	4.39
		22	5.18	Feb. 3	4.23	25	4.45
1957		28	5.37	10	4.48	Sept. 2	4.94
		Aug. 4	5.58	17	4.42	8	5.19
Jan. 7	6.18	11	5.55	24	4.51	15	5.46
14	6.20	19	5.81	Mar. 3	3.68	22	5.43
21	5.94	25	5.92	10	3.55	29	5.56
28	5.70	Sept. 1	5.96	17	3.76	Oct. 6	5.57
Feb. 4	5.74	8	6.14	24	4.07	13	5.39
11	5.60	17	6.28	31	4.29	20	5.35
18	5.46	23	6.31	Apr. 7	4.43	27	5.31
25	5.48	30	6.43	14	4.65	Nov. 3	5.26
Mar. 4	5.56	Oct. 7	6.48	21	4.80	10	5.29
11	5.60	14	6.52	28	4.94	17	5.07
18	5.63	21	6.24	May 6	5.12	24	4.68
25	5.50	29	5.24	12	5.32	Dec. 1	4.65
Apr. 1	5.55	Nov. 4	5.18	19	5.50	8	4.69
8	4.87	12	5.00	26	5.65	15	4.59
15	4.46	18	4.25	June 2	5.70	22	4.66
22	4.30	25	4.18	9	5.48	29	4.80
29	3.30	Dec. 2	4.39				

La Porte 3. (36/2W-31P1). U. S. Government. SE $\frac{1}{4}$ SW $\frac{1}{4}$ sec. 31, T. 36 N., R. 2 W. Drilled unused water-table well in sand, diameter 8 inches, reported depth 89 feet. Land-surface datum is 737.08 feet above msl. Recording gage installed Nov. 3, 1955. Highest water level is 16.25 below lsd, May 21-25, May 30-June 3, 1956; lowest 18.32 below lsd, Dec. 31, 1958. Records available: 1955-58.

(Daily highest water level from recorder graph, 1955)

Nov. 4	16.89	Nov. 12	16.92	Nov. 20	e16.98	Nov. 28	e17.06
5	16.90	13	16.92	21	e16.99	29	e17.07
6	16.90	14	16.93	22	e17.00	30	e17.08
7	16.90	15	16.94	23	e17.01	Dec. 1	e17.09
8	16.91	16	16.95	24	e17.02	2	e17.10
9	16.91	17	16.95	25	e17.03	3	e17.10
10	16.91	18	e16.97	26	e17.04	4	e17.11
11	16.92	19	e16.98	27	e17.05	5	e17.12

Table 5.--Water levels in observation wells in La Porte County--Continued

La Porte 3--Continued

Date	Water level	Date	Water level	Date	Water level	Date	Water level
1955		Dec. 11	e17.18	Dec. 18	17.24	Dec. 25	17.31
		12	e17.19	19	17.25	26	17.32
Dec. 6	e17.13	13	e17.20	20	17.25	27	17.32
7	e17.14	14	e17.21	21	17.25	28	17.33
8	e17.15	15	17.22	22	17.28	29	17.33
9	e17.16	16	17.22	23	17.29	30	17.34
10	e17.17	17	17.23	24	17.30	31	17.34

(Daily highest water level from recorder graph, 1956)

Day	Jan.	Feb.	Mar.	Apr.	May	June	July	Aug.	Sept.	Oct.	Nov.	Dec.
1	17.35	17.53	17.35	17.21	16.84	16.25	16.53	16.96	17.35	17.68	17.94	18.09
2	17.35	17.54	17.32	17.21	16.79	16.25	16.54	16.98	17.36	17.69	17.95	18.09
3	17.36	17.54	17.30	17.21	16.74	16.25	16.56	16.99	17.37	17.70	17.95	18.09
4	17.36	17.55	17.28	17.21	16.72	16.26	16.57	17.00	17.38	17.72	17.96	18.10
5	17.37	17.55	17.26	17.21	16.67	16.27	16.59	17.02	17.39	17.72	17.97	18.10
6	17.37	17.56	17.24	17.21	16.64	16.28	16.61	17.03	17.40	17.73	17.97	18.11
7	17.38	17.57	17.22	17.21	16.62	16.28	16.62	17.04	17.41	17.74	17.98	18.11
8	17.39	17.58	17.21	17.21	16.60	16.29	16.63	17.06	17.42	17.75	17.98	18.11
9	17.39	17.58	17.21	17.21	16.57	16.30	16.64	17.07	17.43	17.76	17.99	18.12
10	17.40	17.59	17.20	17.21	16.54	16.30	16.65	17.08	17.44	17.77	18.00	18.12
11	e17.41	17.59	17.19	17.21	16.47	16.31	16.67	17.09	17.45	17.78	e18.01	18.12
12	17.41	17.59	17.19	e17.21	16.38	16.32	16.69	17.11	17.46	e17.79	e18.02	18.13
13	17.42	17.60	17.19	e17.21	16.34	16.33	16.70	17.12	17.47	e17.80	e18.02	18.13
14	17.42	17.60	17.19	e17.21	16.33	16.34	16.71	17.13	17.48	e17.81	e18.03	18.13
15	17.43	17.60	17.19	e17.21	16.30	16.35	16.73	17.15	17.51	e17.82	e18.04	18.13
16	17.44	17.60	17.19	e17.21	16.30	16.37	16.75	17.15	17.52	e17.83	e18.04	18.13
17	17.44	17.60	17.19	e17.21	16.28	16.38	16.76	17.17	17.53	e17.84	18.05	18.14
18	17.45	17.60	17.19	17.21	16.27	16.39	16.77	17.18	17.54	e17.85	18.06	18.14
19	17.45	17.60	17.19	17.21	16.26	16.40	16.79	17.20	17.54	17.86	18.06	18.15
20	17.46	17.60	17.19	17.22	16.26	16.41	16.81	17.21	17.57	17.86	18.07	e18.15
21	17.47	17.60	17.19	17.22	16.25	16.41	16.81	17.22	17.57	17.87	18.05	e18.15
22	17.47	17.60	17.19	17.23	16.25	16.41	16.83	17.23	17.58	17.88	18.06	e18.16
23	17.48	17.60	17.19	17.23	16.25	16.42	16.85	17.25	17.59	17.89	18.06	e18.17
24	17.48	17.58	17.20	17.24	16.25	16.43	16.86	17.25	17.60	17.89	18.06	e18.17
25	17.49	17.52	17.20	17.25	16.25	16.44	16.87	17.27	17.61	17.90	e18.07	e18.18
26	17.49	17.45	17.20	17.26	16.26	16.45	16.89	17.28	17.62	17.91	e18.07	e18.18
27	17.50	17.42	17.20	17.26	16.26	16.46	16.90	17.29	17.64	17.91	18.07	e18.19
28	17.50	17.40	17.21	17.23	16.26	16.47	16.91	17.30	17.65	17.91	18.07	e18.19
29	17.51	17.37	17.21	17.04	16.26	-----	16.91	17.31	17.66	17.92	18.08	e18.20
30	17.52	-----	17.21	16.93	16.25	16.52	16.93	17.33	17.67	17.93	18.08	e18.20
31	17.52	-----	17.21	-----	16.25	-----	16.94	17.34	-----	17.94	18.09	e18.21

Table 5.--Water levels in observation wells in La Porte County--Continued

La Porte 3--Continued

(Daily highest water level from recorder graph, 1957)

Day	Jan.	Feb.	Mar.	Apr.	May	June	July	Aug.	Sept.	Oct.	Nov.	Dec.
1	18.21	18.21	18.22	18.02	17.20	17.03	17.11	17.38	17.35	17.43	17.40	17.27
2	18.22	18.22	18.22	18.02	17.18	17.03	17.12	17.39	17.31	17.44	17.40	17.28
3	18.22	18.22	18.22	17.97	17.18	17.03	17.13	17.39	17.29	17.45	17.40	17.28
4	18.23	18.22	18.22	17.95	17.17	17.03	17.13	17.39	17.28	17.47	17.40	17.28
5	18.23	18.22	18.23	-----	17.16	17.03	17.14	17.40	17.28	17.48	17.40	17.29
6	18.23	18.22	18.23	-----	17.15	17.04	17.14	17.41	17.29	17.49	17.40	17.29
7	18.24	18.23	18.23	-----	17.14	17.04	17.15	17.42	17.29	17.50	17.41	17.29
8	18.24	18.23	18.23	17.89	17.14	17.05	17.16	17.43	17.30	17.51	17.41	17.30
9	18.24	18.23	18.24	17.85	17.14	17.05	17.17	17.44	17.31	17.52	17.41	17.30
10	18.25	18.23	18.24	17.81	17.14	17.05	17.18	17.45	17.31	17.53	17.41	17.30
11	18.25	18.23	18.23	17.78	17.13	17.06	17.18	17.45	17.32	17.53	17.42	17.30
12	18.25	18.21	18.23	17.75	17.13	17.06	17.19	17.46	17.33	17.54	17.42	17.30
13	18.25	18.20	18.23	17.74	17.13	17.06	17.20	17.46	17.34	17.55	17.42	17.31
14	18.25	18.20	18.21	17.73	17.13	17.07	17.21	17.47	17.34	17.55	17.42	17.31
15	18.25	18.19	18.19	17.72	17.13	17.07	17.22	17.47	17.34	17.56	17.41	17.31
16	18.25	18.19	18.17	17.72	17.13	17.07	17.23	17.47	17.34	17.57	17.37	17.31
17	18.26	18.19	17.15	17.72	17.13	17.07	17.23	17.47	17.35	17.58	17.34	17.32
18	18.26	18.19	18.14	17.72	17.12	17.07	17.24	17.47	17.35	17.59	17.29	17.32
19	18.26	18.19	18.12	17.72	17.11	17.07	17.25	17.47	17.35	17.59	17.28	17.25
20	18.27	18.19	18.09	17.72	17.08	17.07	17.26	17.48	17.36	17.59	17.27	17.17
21	18.27	18.19	18.07	17.70	17.05	17.07	17.27	17.48	17.36	17.60	17.27	17.30
22	18.26	18.20	18.05	17.68	17.04	17.07	17.28	17.48	17.36	17.60	17.27	17.05
23	18.24	18.20	18.04	17.66	17.04	17.07	17.29	17.49	17.36	17.61	17.27	17.02
24	18.23	18.20	18.04	-----	17.03	17.07	17.30	17.50	17.36	17.55	17.27	17.00
25	18.23	18.21	18.03	17.59	17.03	17.08	17.31	17.50	17.37	17.50	17.27	16.96
26	18.22	18.21	18.03	17.55	17.02	17.08	17.32	17.51	17.38	17.47	17.27	16.94
27	18.21	18.22	18.03	17.47	17.02	17.09	17.33	17.51	17.39	17.44	17.27	16.95
28	18.21	18.22	18.02	17.35	17.02	17.10	17.34	17.52	17.40	17.43	17.27	16.92
29	18.21	-----	18.02	17.29	17.02	17.10	17.35	17.52	17.41	17.42	17.27	16.90
30	18.21	-----	18.02	17.23	17.02	17.11	17.36	17.45	17.42	17.41	17.27	16.89
31	18.21	-----	18.02	-----	17.03	-----	17.37	17.39	-----	17.41	-----	16.87

(Daily highest water level from recorder graph, 1958)

1	16.87	16.86	16.81	16.68	16.89	17.23	17.44	17.65	17.59	17.79	18.00	18.18
2	16.86	16.86	16.76	16.69	16.90	17.24	17.44	17.66	17.60	17.80	18.01	18.19
3	16.86	16.87	16.74	16.70	16.91	17.24	17.45	17.66	17.60	17.81	18.01	18.19
4	16.86	16.87	16.72	16.70	16.92	17.25	17.45	17.67	17.61	17.81	18.02	18.20
5	16.86	16.88	16.71	16.70	16.93	17.26	17.46	17.68	17.61	17.82	18.03	18.20
6	16.85	16.88	16.69	16.71	16.93	17.26	17.47	17.68	17.62	17.83	18.03	18.21
7	16.84	16.89	16.68	16.71	16.94	17.27	17.47	17.69	17.63	17.84	18.06	18.22
8	16.84	16.89	16.68	16.71	16.96	17.27	17.48	17.70	17.63	17.84	18.07	18.22
9	16.84	16.90	16.68	16.72	16.97	17.28	17.48	17.70	17.64	17.85	18.07	18.22
10	16.84	16.90	16.67	16.72	16.98	17.29	17.49	17.70	17.65	17.85	18.08	18.23

Table 5.--Water levels in observation wells in La Porte County--Continued

La Porte 3--Continued

Day	Jan.	Feb.	Mar.	Apr.	May	June	July	Aug.	Sept.	Oct.	Nov.	Dec.
11	16.84	16.91	16.67	16.73	16.99	17.30	17.51	17.69	17.66	17.86	18.09	18.23
12	16.84	16.91	16.67	16.74	17.00	17.31	17.51	17.65	17.66	17.86	18.09	18.24
13	16.84	16.92	16.66	16.75	17.00	17.31	17.51	17.64	17.67	17.87	18.09	18.24
14	16.84	16.93	16.66	16.75	17.02	17.32	17.52	17.64	17.68	17.88	18.10	18.24
15	16.84	16.93	16.66	16.75	17.03e	17.33	17.52	17.62	17.69	17.88	18.10	18.25
16	16.84	16.94	16.66	16.76	17.05e	17.34	17.53	17.61	17.69	17.89	18.11	18.25
17	16.84	16.95	16.66	16.78	17.06e	17.35	17.55	17.59	17.69	17.89	18.11	17.25
18	16.84	16.96	16.66	16.78	17.07e	17.35	17.55	17.58	17.70	17.90	18.12	18.25
19	16.84	16.96	16.66	16.79	17.08e	17.36e	17.56	17.58	17.70	17.91	18.12	18.26
20	16.84	16.98	16.66e	16.80	17.09e	17.37e	17.57	17.57	17.72	17.92	18.12	18.26
21	16.84	16.99	16.66	16.81	17.10e	17.38e	17.57	17.57	17.72	17.92	18.13	18.27
22	16.85	17.00	16.66	16.82	17.11e	17.39e	17.58	17.57	17.73	17.93	18.14	18.27
23	16.85	17.00	16.66	16.83	17.12e	17.39	17.59	17.57	17.74	17.94	18.14	18.28
24	16.85	17.01	16.66	16.84	17.14e	17.40	17.59	17.57	17.74	17.95	18.15	18.28
25	16.85	17.02	16.66	16.85	17.15e	17.41	17.60	17.57	17.75	17.96	18.15	18.29
26	16.85	17.02	16.66	16.85	17.16e	17.42	17.61	17.57	17.76	17.96	18.16	18.29
27	16.85	16.91	16.67	16.86	17.17	17.42	17.62	17.57	17.77	17.97	18.16	18.30
28	16.85	16.86	16.67	16.87	17.18	17.43	17.63	17.58	17.78	17.98	18.17	18.30
29	16.85	-----	16.67	16.89	17.19	17.43	17.63	17.58	17.78	17.98	18.17	18.31
30	16.86	-----	16.67	16.89	17.20	17.43	17.64	17.58	17.79	17.99	18.17	18.31
31	16.86	-----	16.68	-----	17.21	-----	17.65	17.58	-----	18.00	-----	18.32

La Porte 4. (35/2W-11H1). U. S. Government. SE $\frac{1}{4}$ NE $\frac{1}{4}$ sec. 11, T. 35 N., R. 2 W. Drilled unused artesian well in sand, diameter 8 inches, reported depth 90 feet. Land-surface datum is 688 feet above msl. Recording gage installed Nov. 3, 1955. Highest water level is 0.10e below lsd, May 1, 1957; lowest 4.50 below lsd, Dec. 13-17, 1956. Records available: 1955-57. Affected by barometric pressure.

(Daily highest water level from recorder graph, 1955)

Date	Water level	Date	Water level	Date	Water level	Date	Water level
Nov. 4	1.80	Nov. 19	2.03	Dec. 4	2.31	Dec. 19	2.53
5	1.81	20	2.05	5	2.33	20	2.55
6	1.83	21	2.07	6	2.34	21	2.56
7	1.84	22	2.08	7	2.35	22	2.57
8	1.86	23	2.10	8	2.37	23	2.59
9	1.87	24	2.12	9	2.39	24	2.60
10	1.89	25	2.13	10	e2.42	25	2.62
11	1.91	26	2.17	11	e2.43	26	2.63
12	1.92	27	2.18	12	e2.44	27	2.64
13	1.93	28	2.20	13	e2.45	28	2.65
14	1.95	29	2.22	14	e2.46	29	2.66
15	1.97	30	2.24	15	2.47	30	2.67
16	1.98	Dec. 1	2.25	16	2.49	31	2.68
17	2.00	2	2.28	17	2.50		
18	2.01	3	2.30	18	2.52		

Table 5.--Water levels in observation wells in La Porte County--Continued

La Porte 4--Continued

(Daily highest water level from recorder graph, 1956)

Day	Jan.	Feb.	Mar.	Apr.	May	June	July	Aug.	Sept.	Oct.	Nov.	Dec.
1	2.70	3.06	2.12	2.24	-----	-----	2.31	3.03	3.63	4.08	4.38	e4.49
2	2.71	3.07	2.12	2.25	-----	-----	2.36	3.06	3.64	4.09	4.38	e4.49
3	2.73	3.08	2.12	2.26	0.78	-----	2.39	3.07	3.66	4.10	4.38	e4.50
4	2.73	-----	2.12	-----	0.79	-----	2.43	3.10	3.68	4.12	4.39	e4.50
5	-----	3.09	2.13	-----	0.81	-----	2.45	3.12	3.69	4.14	4.39	e4.50
6	2.76	3.10	e2.06	2.28	0.80	-----	-----	3.15	3.70	4.16	4.40	e4.50
7	2.78	3.11	e2.02	2.28	0.80	1.57	2.48	e3.17	3.71	4.17	4.40	e4.50
8	2.79	3.12	2.01	2.29	0.80	1.63	2.50	e3.19	3.73	4.18	4.41	e4.50
9	2.80	3.13	2.01	2.30	0.74	1.69	2.53	3.23	3.74	4.19	4.41	e4.50
10	2.81	3.14	2.01	2.31	-----	1.82	2.56	3.25	3.77	4.20	4.41	e4.50
11	2.83	3.14	2.01	2.32	-----	1.88	2.59	3.27	3.78	4.22	4.41	e4.50
12	2.84	3.14	2.01	2.34	-----	1.94	2.62	3.30	3.80	4.22	4.42	e4.50
13	2.85	3.14	2.01	2.34	-----	2.00	2.65	3.32	3.81	4.23	4.43	4.50
14	2.86	3.14	2.02	2.35	-----	2.05	2.68	3.33	3.83	4.24	4.43	4.50
15	2.87	3.14	2.02	2.36	-----	2.09	2.71	3.35	3.84	4.25	4.43	4.50
16	2.88	3.15	2.03	2.37	-----	2.11	2.73	3.36	3.86	4.26	4.43	4.50
17	2.89	3.15	2.04	2.39	-----	1.96	2.75	3.38	3.88	4.27	e4.43	4.50
18	2.91	3.01	2.04	2.41	-----	1.96	2.78	3.40	3.89	4.28	e4.43	4.49
19	2.92	2.87	2.06	2.43	-----	1.96	2.80	3.41	3.90	4.29	e4.44	4.49
20	2.93	2.87	2.07	2.44	-----	1.97	2.82	3.43	3.92	4.30	e4.44	4.49
21	2.94	2.87	2.08	2.46	-----	1.95	2.83	3.44	3.94	4.31	e4.44	4.48
22	2.95	2.87	2.10	2.48	-----	1.98	2.85	3.46	3.95	4.32	e4.45	4.48
23	2.96	2.87	2.11	2.49	-----	2.00	2.85	3.48	3.96	4.32	e4.45	4.4
24	2.97	2.87	2.13	2.50	-----	2.01	2.87	3.50	3.98	4.33	e4.46	4.46
25	2.98	2.12	2.15	2.53	-----	2.01	2.89	3.51	3.99	4.34	e4.46	4.46
26	3.00	2.12	2.17	2.60	-----	2.04	2.90	3.53	4.00	4.34	e4.46	4.45
27	3.01	2.12	2.18	-----	-----	2.06	2.92	3.55	4.02	4.37	e4.47	4.44
28	3.02	2.12	2.20	-----	-----	2.14	2.94	3.56	4.03	e4.37	e4.48	4.44
29	3.03	2.12	2.21	-----	-----	2.22	2.96	3.58	4.05	e4.37	e4.48	4.43
30	3.04	-----	2.22	-----	-----	2.27	2.98	3.60	4.06	e4.38	e4.49	4.43
31	3.05	-----	2.23	-----	-----	-----	3.00	3.61	-----	e4.38	-----	-----

(Daily highest water level from recorder graph, 1957)

1	4.42	3.83	e3.56	3.25	e0.10	1.30	-----	-----	-----	-----	-----	-----
2	4.42	3.83	e3.56	3.22	e0.17	1.34	-----	-----	-----	-----	-----	-----
3	4.42	3.83	e3.56	2.87	e0.24	1.38	-----	-----	-----	-----	-----	-----
4	4.42	3.83	e3.57	2.54	e0.51	1.42	-----	-----	-----	-----	-----	-----
5	4.42	3.83	e3.57	e2.30	e0.38	1.45	-----	-----	-----	-----	-----	-----
6	4.42	3.84	e3.57	e2.24	e0.45	1.49	-----	-----	-----	-----	e2.56	-----
7	-----	3.84	3.57	e2.07	e0.51	-----	-----	-----	-----	-----	-----	-----
8	-----	3.65	3.58	e1.92	e0.58	-----	-----	-----	-----	-----	-----	-----
9	-----	3.58	3.58	e1.92	0.66	-----	-----	-----	-----	-----	-----	-----
10	-----	3.58	3.58	e1.92	0.74	-----	-----	-----	-----	-----	-----	-----
11	-----	3.57	3.58	1.92	0.80	-----	-----	-----	-----	-----	-----	-----
12	-----	3.56	3.59	1.92	0.86	-----	-----	-----	-----	-----	-----	-----

Table 5.--Water levels in observation wells in La Porte County--Continued

La Porte 4--Continued

Day	Jan.	Feb.	Mar.	Apr.	May	June	July	Aug.	Sept.	Oct.	Nov.	Dec.
13	-----	3.56	3.59	1.92	0.90	-----	-----	-----	-----	-----	-----	-----
14	-----	3.56	3.59	1.92	0.92	-----	-----	-----	-----	-----	-----	-----
15	-----	3.56	3.59	1.92	0.93	-----	-----	-----	-----	-----	-----	-----
16	-----	3.56	3.59	1.93	0.94	-----	-----	-----	-----	-----	-----	-----
17	-----	3.56	3.59	1.93	0.96	-----	-----	-----	-----	-----	-----	-----
18	-----	3.56	3.54	1.94	0.99	-----	-----	-----	-----	-----	-----	-----
19	-----	3.56	3.36	1.94	1.01	-----	-----	-----	-----	-----	-----	-----
20	-----	3.56	3.34	1.89	1.02	-----	-----	-----	-----	-----	-----	-----
21	-----	3.56	3.31	1.89	1.03	-----	-----	-----	-----	-----	-----	-----
22	-----	3.56	3.31	1.77	1.03	-----	-----	-----	-----	-----	-----	-----
23	-----	3.56	3.31	1.65	1.04	-----	-----	-----	-----	-----	-----	-----
24	-----	3.56	3.31	1.57	1.06	-----	-----	-----	-----	-----	-----	-----
25	3.83	3.56	3.31	1.05	1.08	-----	-----	-----	-----	-----	-----	-----
26	3.83	e3.56	3.31	-----	1.10	-----	-----	-----	-----	-----	-----	-----
27	3.83	e3.56	3.31	-----	1.12	-----	-----	-----	-----	-----	-----	-----
28	3.83	e3.56	3.31	-----	1.16	-----	-----	-----	-----	-----	-----	-----
29	3.83	-----	3.31	-----	1.19	-----	-----	-----	-----	-----	-----	-----
30	3.83	-----	3.31	-----	1.23	-----	-----	-----	-----	-----	-----	-----
31	3.83	-----	3.31	-----	1.26	-----	-----	-----	-----	-----	-----	-----

La Porte 5. (36/2W-32K2). U. S. Government. NW $\frac{1}{4}$ SE $\frac{1}{4}$ sec. 32, T. 36 N., R. 2 W. Drilled unused water-table well in sand, diameter 8 inches, reported depth 80 feet. Land-surface datum is 741 feet above msl. Recording gage installed Dec. 1, 1955. Highest water level is 16.44 below lsd, June 21, 1956; lowest 19.48 below lsd, Apr. 14, 15, 1957. Records available: 1955-57. Affected by barometric pressure.

(Daily highest water level from recorder graph, 1955)

Date	Water level	Date	Water level	Date	Water level	Date	Water level
Dec. 1	17.11	Dec. 5	17.35	Dec. 23	17.32	Dec. 27	17.38
2	17.10	6	17.14	24	17.34	29	17.40
3	17.10	7	17.13	25	17.36	30	17.42
4	17.11	22	17.30	26	17.38	31	17.41

(Daily highest water level from recorder graph, 1956)

Day	Jan.	Feb.	Mar.	Apr.	May	June	July	Aug.	Sept.	Oct.	Nov.	Dec.
1	17.42	17.69	17.67	17.61	17.69	16.57	16.53	16.88	17.23	17.59	17.96	18.30
2	17.43	17.69	17.66	17.60	17.64	16.55	16.55	16.89	17.25	17.60	17.97	18.31
3	17.45	17.71	17.65	17.60	17.57	16.54	16.57	16.90	17.26	17.61	17.99	18.32
4	17.46	-----	17.65	-----	17.55	-----	16.58	16.90	17.27	17.62	18.00	18.33
5	-----	17.70	17.62	17.63	17.50	-----	16.60	16.91	17.28	17.63	18.01	18.34
6	17.47	17.71	17.60	17.62	17.46	-----	16.61	16.92	17.29	17.65	18.02	18.35

Table 5.--Water levels in observation wells in La Porte County--Continued

La Porte 5--Continued

Day	Jan.	Feb.	Mar.	Apr.	May	June	July	Aug.	Sept.	Oct.	Nov.	Dec.
7	17.48	17.71	17.59	17.62	17.43	16.48	16.59	-----	17.31	17.66	18.03	18.35
8	17.49	17.73	17.63	17.63	17.39	16.47	16.57	-----	17.33	17.67	18.04	18.37
9	17.49	17.75	17.63	17.67	-----	16.47	16.60	16.98	17.35	17.69	18.06	18.38
10	17.50	17.75	17.61	17.68	17.32	16.46	16.64	16.99	17.36	17.70	18.07	18.38
11	17.51	17.76	17.63	17.68	17.28	16.46	16.65	17.00	17.36	17.72	18.07	18.38
12	17.52	17.75	17.63	17.68	17.25	16.45	16.66	17.01	17.37	17.72	18.08	18.39
13	17.53	17.76	17.61	17.69	17.21	16.45	16.65	17.02	17.38	17.73	18.09	18.40
14	17.53	17.78	17.61	17.66	17.18	16.45	16.69	17.03	17.39	17.75	18.10	18.41
15	17.53	17.78	17.61	17.67	17.15	16.45	16.68	17.05	17.40	17.76	18.12	18.42
16	17.53	17.80	17.60	17.68	17.11	16.45	16.69	17.05	17.41	17.77	18.13	18.43
17	17.55	17.78	17.59	17.71	17.08	16.45	16.71	17.06	17.43	17.78	18.15	18.44
18	17.57	17.79	17.59	17.72	17.04	16.45	16.73	17.07	17.45	17.79	18.16	18.46
19	17.57	17.80	17.62	17.75	17.00	16.45	16.74	17.09	17.45	17.80	18.16	18.47
20	17.58	17.82	17.62	17.76	16.94	16.45	16.75	17.10	17.46	17.81	18.15	18.48
21	17.58	17.82	17.61	17.74	16.89	16.44	16.76	17.12	17.48	17.82	18.18	18.48
22	17.60	17.83	17.60	17.75	16.85	16.45	16.77	17.12	17.50	17.83	18.19	18.50
23	17.60	17.84	17.59	17.77	16.83	16.46	16.79	17.12	17.50	17.84	18.20	18.51
24	17.62	17.80	17.60	17.79	16.79	16.46	16.79	17.15	17.51	17.86	18.21	18.52
25	17.62	17.76	17.59	17.78	16.75	16.49	16.80	17.16	17.52	17.88	18.21	18.53
26	17.64	17.78	17.59	17.78	16.71	16.47	16.81	17.17	17.54	17.89	18.24	18.54
27	17.64	17.74	17.59	17.77	16.68	16.50	16.82	17.17	17.55	17.90	18.25	18.55
28	17.65	17.73	17.60	17.75	16.66	16.52	16.83	17.18	17.55	17.90	18.25	18.55
29	17.65	17.72	17.60	17.74	16.62	16.54	16.85	17.19	17.57	17.92	18.27	18.57
30	17.67	-----	17.61	17.76	16.60	16.53	16.86	17.20	17.59	17.93	18.28	18.58
31	17.69	-----	17.63	-----	16.59	-----	16.86	17.22	-----	17.94	18.29	18.59

(Daily highest water level from recorder graph, 1957)

Day	Jan.	Feb.	Mar.	Apr.	May	June
1	-----	18.88	e19.13	19.40	19.27	-----
2	-----	18.89	e19.14	19.41	19.23	-----
3	-----	18.90	e19.14	19.42	19.17	-----
4	18.64	18.91	e19.45	19.42	19.14	-----
5	18.65	18.92	e19.16	19.43	19.10	-----
6	18.65	18.93	e19.17	19.44	19.07	-----
7	e18.65	18.94	19.21	19.44	19.03	-----
8	e18.66	18.95	19.22	-----	-----	-----
9	e18.67	18.95	19.23	-----	18.98	-----
10	e18.69	18.96	19.24	e19.46	18.95	-----
11	e18.70	18.97	19.24	19.46	18.93	-----
12	e18.71	18.98	19.25	19.47	-----	-----
13	e18.72	18.99	19.26	19.47	-----	-----
14	e18.73	19.00	19.27	19.47	-----	-----
15	e18.74	19.00	19.28	19.47	-----	-----
16	e18.75	19.01	19.29	19.47	-----	-----
17	e18.76	19.02	19.29	19.47	-----	-----

Table 5.--Water levels in observation wells in La Porte County--Continued

La Porte 5--Continued

Day	Jan.	Feb.	Mar.	Apr.	May	June
18	e18.77	19.03	19.30	19.47	-----	-----
19	e18.78	19.04	19.31	19.46	-----	-----
20	e18.79	19.05	19.32	19.46	-----	-----
21	e18.80	19.06	19.33	19.46	-----	-----
22	e18.81	19.08	19.33	19.46	-----	-----
23	e18.82	19.08	19.34	19.46	-----	-----
24	e18.83	19.09	19.35	19.45	-----	-----
25	e18.83	19.09	19.35	19.45	-----	-----
26	18.83	19.11	19.36	19.44	-----	-----
27	18.84	e19.11	19.37	19.43	-----	-----
28	18.85	e19.12	19.38	19.41	-----	-----
29	18.85	-----	19.39	19.37	-----	-----
30	18.87	-----	19.39	19.32	-----	-----
31	18.87	-----	19.40	-----	-----	-----

La Porte 6. (37/4W-16R1). Coolspring Township School. SE $\frac{1}{4}$ SE $\frac{1}{4}$ sec. 16, T. 37 N., R. 4 W. Drilled unused artesian well in gravel, diameter 6 inches, reported depth 62 feet. Land-surface datum is 655.64 feet above msl. Highest water level is 5.80 above lsd, June 1, 1956; lowest 2.43 below lsd, Jan. 10, 1958. Records available: 1956-58. Affected by nearby pumping.

Date	Water level	Date	Water level	Date	Water level	Date	Water level
1956		Dec. 3	+4.58	Apr. 19	+3.91	Sept. 13	+3.38
		11	+4.60	26	+3.91	20	+3.38
May 20	+4.90	18	+4.67	May 1	+3.84	25	+3.38
June 1	+5.80	24	+4.74	9	+3.78	Oct. 4	+3.39
15	+5.70			17	+3.73	11	+3.35
29	+5.60	1957		24	+3.70	18	+3.29
July 9	+5.40			31	+3.67	25	+3.28
20	+5.20	Jan. 2	+4.67	June 7	+3.63	Nov. 1	+3.27
31	+5.20	10	+4.59	14	+3.61	8	+3.27
Aug. 15	+5.10	18	+4.45	21	+3.57	15	+3.52
30	+5.00	25	+4.39	28	+3.55	22	+3.50
Sept. 11	+5.00	Feb. 7	+4.30	July 5	+3.52	29	+2.49
28	+4.94	14	+4.18	12	+3.50	Dec. 6	+2.49
Oct. 5	+4.82	22	+4.15	19	+3.47	13	+2.48
12	+4.89	28	+4.11	26	+3.45	20	+2.48
19	+5.32	Mar. 7	+4.10	Aug. 2	+3.42	31	+2.48
29	+4.75	15	+4.06	9	+3.41		
Nov. 5	+4.75	22	+4.01	16	+3.40	1958	
12	+4.71	29	+3.97	22	+3.40		
20	+4.67	Apr. 5	+3.96	29	+3.40	Jan. 10	+2.43
27	+4.64	12	+3.94	Sept. 6	+3.39		

Table 5.--Water levels in observation wells in La Porte County--Continued

La Porte 7. (34/3W-13C4). Pennsylvanian Railroad Co. NE $\frac{1}{4}$ NW $\frac{1}{4}$ sec. 13, T. 34 N., R. 3 W. Drilled unused water-table well in sand and gravel, diameter 8 inches, reported depth 76 feet. Land-surface datum is about 680 feet above msl. Highest water level is 3.90 below lsd, Apr. 29, 1957; lowest 8.16 below lsd, Oct. 1, 8, 1956. Records available: 1956-58.

Date	Water level	Date	Water level	Date	Water level	Date	Water level
1956		Jan. 14	7.80	Aug. 26	7.59	Mar. 17	6.46
				Sept. 2	7.39	24	6.76
July 12	7.44			9	7.63	31	6.87
16	7.47	Feb. 4	7.37	16	7.71	Apr. 7	6.80
23	7.50	11	7.01	23	7.78	14	6.90
30	7.60	18	7.17	30	7.83	21	7.00
Aug. 3	7.67	25	7.33	Oct. 7	7.87	28	7.08
13	7.87	Mar. 4	7.42	14	7.87	May 5	7.19
20	7.75	11	7.44	21	7.70	12	7.27
27	7.89	18	7.39	28	6.24	19	7.30
Sept. 3	7.98	25	7.21	Nov. 4	7.00	26	7.41
10	8.07	Apr. 1	7.30	11	6.99	June 2	7.45
17	8.08	8	6.24	18	5.83	9	5.72
24	8.12	15	6.55	25	6.61	16	5.25
Oct. 1	8.16	22	6.34	Dec. 2	6.87	23	6.25
8	8.16	29	3.90	9	6.73	30	6.76
15	8.14	May 6	5.76	16	6.55	July 7	7.08
22	8.11	13	5.40	23	4.93	14	6.48
29	8.07	20	6.20	30	5.43	21	6.90
Nov. 5	8.06	27	6.57			28	7.18
12	8.03	June 3	6.79	1958		Aug. 4	6.54
19	8.04	10	6.94	Jan. 6	6.06	11	6.53
26	7.97	17	6.99	13	6.62	18	7.00
Dec. 3	7.95	24	7.08	20	6.82	25	7.11
10	7.94	July 1	6.59	27	6.80	Sept. 1	7.22
17	7.92	8	6.94	Feb. 3	6.91	8	7.41
24	7.89	15	6.88	10	6.97	15	7.48
31	7.87	22	7.26	17	6.88	22	7.39
		29	7.34	24	6.33	29	7.82
1957		Aug. 5	7.47	Mar. 3	4.86	Oct. 6	7.82
		12	6.97	10	5.66	13	7.88
Jan. 7	7.83	19	7.43			20	7.91

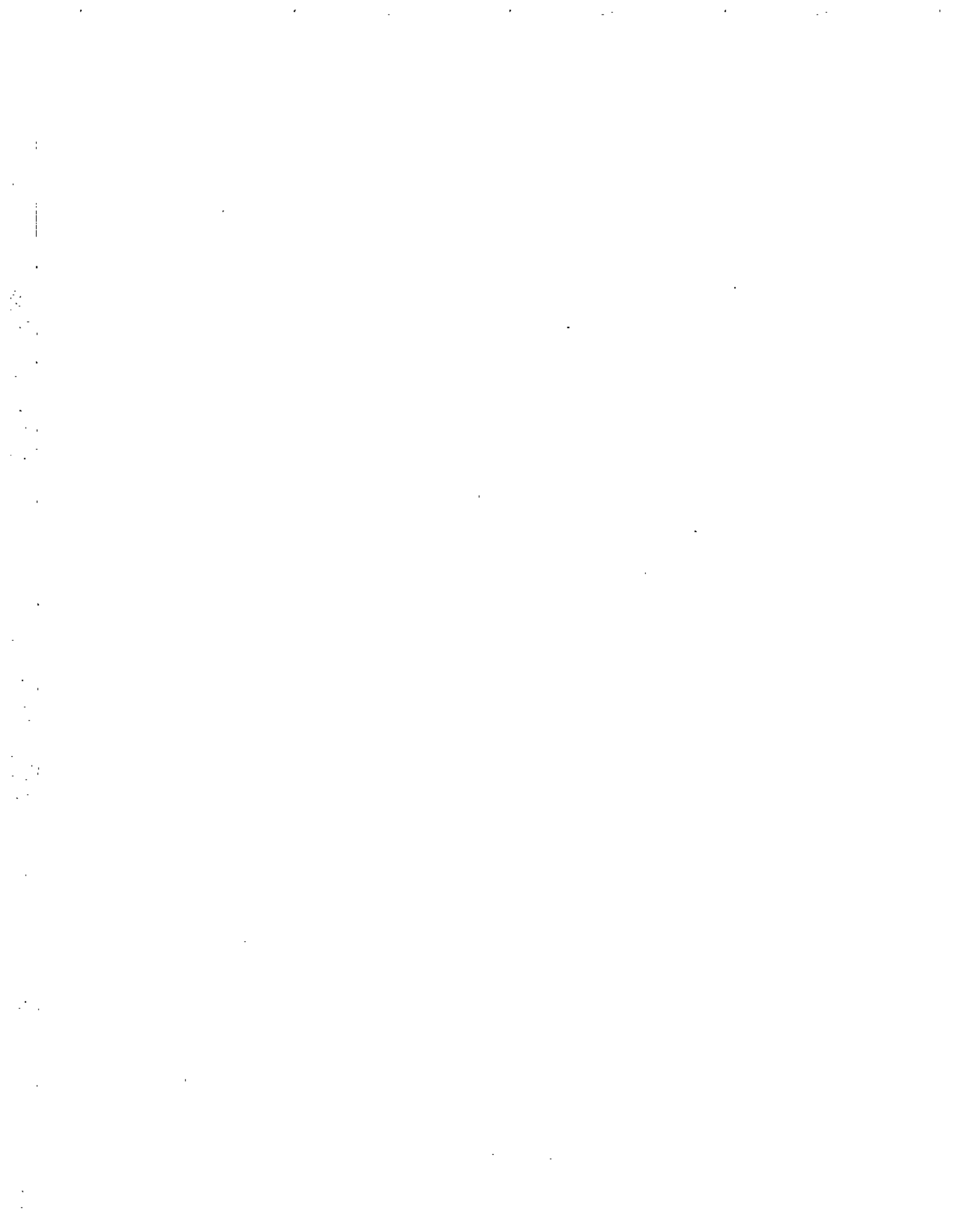
PUBLICATIONS OF COOPERATIVE GROUND-WATER PROGRAM

Report

Ground-water resources of the Indianapolis area, Marion County, Ind. C. L. McGuinness. Ind. Dept. Conserv., Div. Geology. 1943.

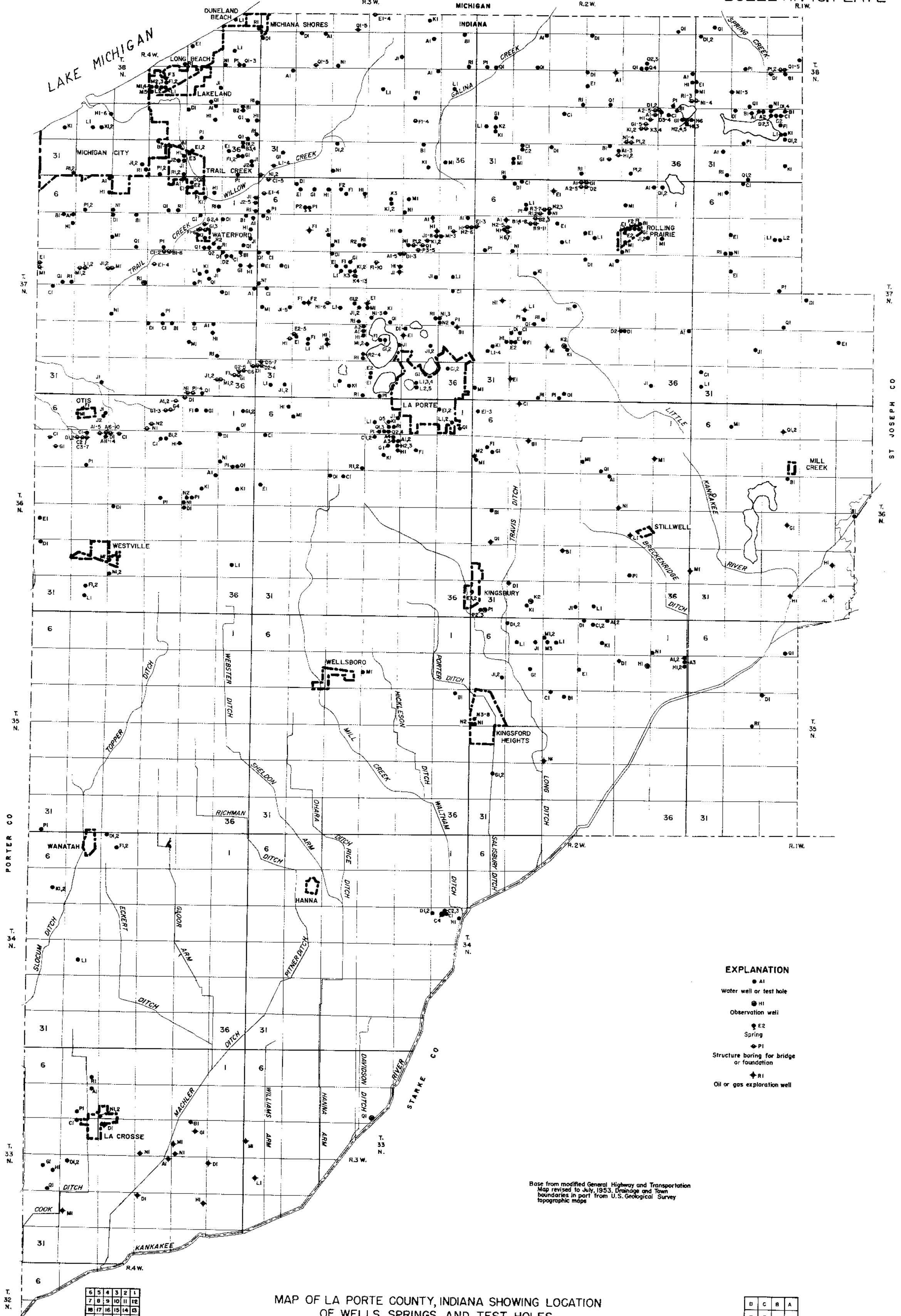
Bulletins

- No. 1 Memorandum concerning a pumping test at Gas City, Ind. J. G. Ferris. Ind. Dept. Conserv., Div. Water Resources. 1945.
- 2 A preliminary report of the ground-water levels of the State based on records of twenty-six observation wells for which long time records are available. Anonymous. Ind. Dept. Conserv., Div. Water Resources. 1946 (Out of print).
- 3 Ground-water resources of St. Joseph County, Ind. Part 1, South Bend area. F. H. Klaer, Jr., and R. W. Stallman. Ind. Dept. Conserv., Div. Water Resources. 1948.
- 4 Ground-water resources of Boone County, Ind. E. A. Brown. Ind. Dept. Conserv., Div. Water Resources. 1949.
- 5 Ground-water resources of Noble County, Ind. R. W. Stallman and F. H. Klaer, Jr. Ind. Dept. Conserv., Div. Water Resources. 1950.
- 7 Water-level records of Indiana. Anonymous. Ind. Dept. Conserv., Div. Water Resources. 1956.
- 8 Ground-water resources of Tippecanoe County, Ind.: Appendix, Basic Data. J. S. Rosenshein and O. J. Cosner. Ind. Dept. Conserv., Div. Water Resources. 1956.
- 8 Ground-water resources of Tippecanoe County, Ind. J. S. Rosenshein. Ind. Dept. Conserv., Div. Water Resources. 1958.
- 9 Ground-water resources of Adams County, Ind. F. A. Watkins, Jr., and P. E. Ward. Ind. Dept. Conserv., Div. Water Resources. 1962.
- 10 Ground-water resources of Northwestern Ind., Preliminary Report: Lake County. J. S. Rosenshein. Ind. Dept. Conserv., Div. Water Resources. 1961.
- 11 Ground-water resources of West-Central Ind., Preliminary Report: Greene County. F. A. Watkins, Jr., and D. G. Jordan. Ind. Dept. Conserv., Div. Water Resources. 1961.
- 12 Ground-water resources of Northwestern Ind., Preliminary Report: Porter County. J. S. Rosenshein. Ind. Dept. Conserv., Div. Water Resources. 1962.
- 13 Ground-water resources of Northwestern Ind., Preliminary Report: La Porte County. J. S. Rosenshein and J. D. Hunn. Ind. Dept. Conserv., Div. Water Resources. 1962.



INDEX

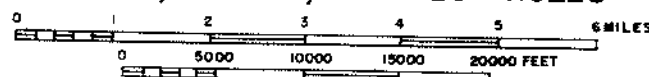
	Page
Abstract-----	1
Acknowledgments-----	5
Analysis of ground water-----	5,9
hardness of water-----	9
method of analysis-----	5
U. S. Public Health Service drinking-water standards-----	157
Bibliography, selected-----	10
Conditions, ground-water-----	6
Conditions, hydrologic-----	6
confined or artesian-----	7
unconfined or water-table-----	7
Conditions, quality of water-----	6
Data, collection and processing-----	5
observation wells-----	5
water samples-----	5
well records-----	5
Geology, general-----	6
consolidated rocks-----	6
Devonian age-----	6
Ordovician age-----	6
Silurian age-----	6
unconsolidated rocks-----	6
Pleistocene and Recent age-----	6
well logs-----	33
Location-----	2
Publications, cooperative ground-water program-----	181
Records-----	8
field chemical analyses-----	9,157
springs-----	8
water levels-----	9,164
wells-----	8,11
well logs-----	9,33
Summary-----	8
Water levels-----	5,9,164
Wells-----	5,7,8
construction of-----	7
drilled-----	7
driven-----	7
jetted-----	7
logs-----	8,33
numbering system-----	4
observation-----	5,9
test, for oil or gas and foundations-----	7
wash borings-----	7
Well screen, grain-size and equivalent slot and gauze size-----	8



- EXPLANATION**
- A1 Water well or test hole
 - H1 Observation well
 - E2 Spring
 - ◆ P1 Structure boring for bridge or foundation
 - ◆ R1 Oil or gas exploration well

Base from modified General Highway and Transportation Map revised to July, 1953. Drainage and Town boundaries in part from U.S. Geological Survey topographic maps

MAP OF LA PORTE COUNTY, INDIANA SHOWING LOCATION OF WELLS, SPRINGS, AND TEST HOLES



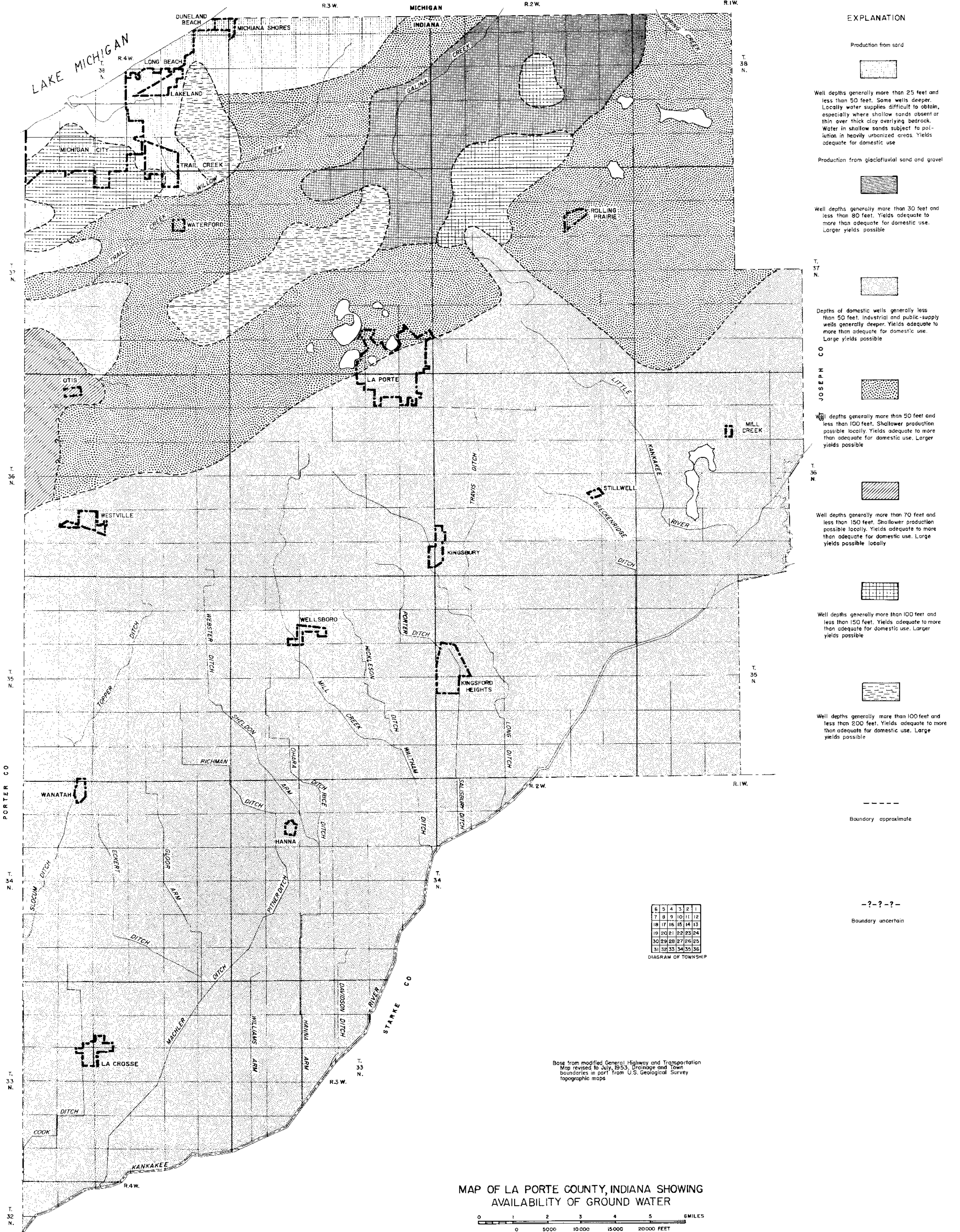
BY J. S. ROSENHEIM AND J. D. HUNK
1962

DIAGRAM OF TOWNSHIP

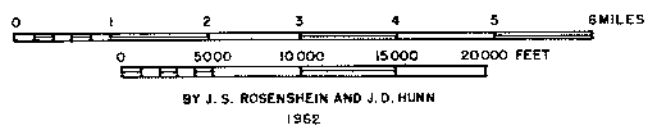
6	5	4	3	2	1
7	8	9	10	11	12
13	14	15	16	17	18
19	20	21	22	23	24
25	26	27	28	29	30
31	32	33	34	35	36

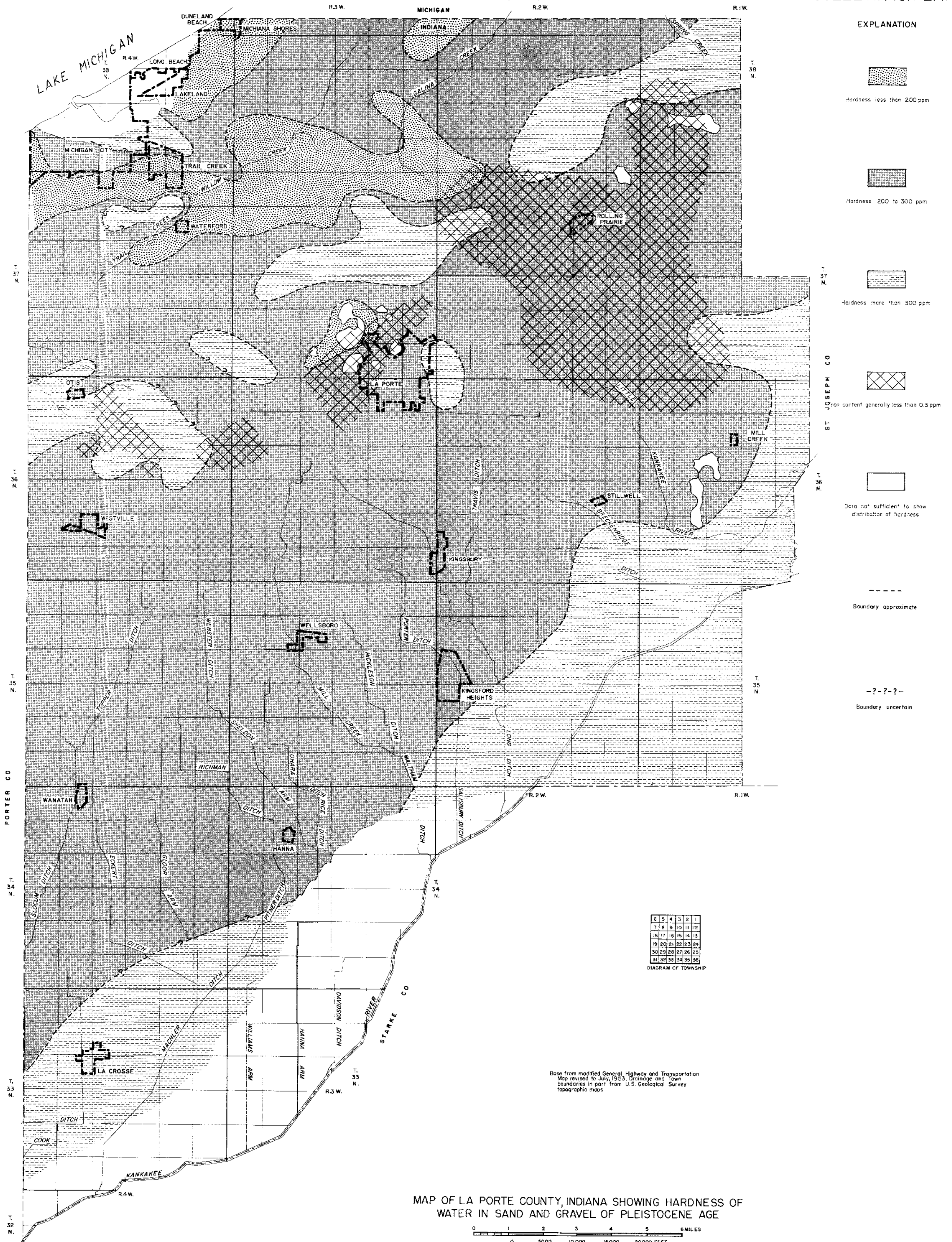
SECTION LETTER SYMBOLS IN WELL-NUMBERING SYSTEM

D	C	B	A
E	F	G	H
I	J	K	L
M	N	O	P



MAP OF LA PORTE COUNTY, INDIANA SHOWING AVAILABILITY OF GROUND WATER





EXPLANATION

Hardness less than 200 ppm

Hardness 200 to 300 ppm

Hardness more than 300 ppm

Iron content generally less than 0.3 ppm

Data not sufficient to show distribution of hardness

Boundary approximate

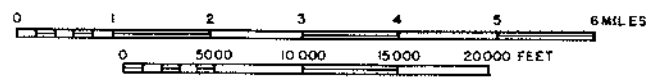
Boundary uncertain

6	5	4	3	2	1
7	8	9	10	11	12
13	14	15	16	17	18
19	20	21	22	23	24
25	26	27	28	29	30
31	32	33	34	35	36

DIAGRAM OF TOWNSHIP

Base from modified General Highway and Transportation Map revised to July, 1953. Grange and Town boundaries in part from U.S. Geological Survey topographic maps

MAP OF LA PORTE COUNTY, INDIANA SHOWING HARDNESS OF WATER IN SAND AND GRAVEL OF PLEISTOCENE AGE



BY J. S. ROSENSEIN AND J. D. MUNN
1962