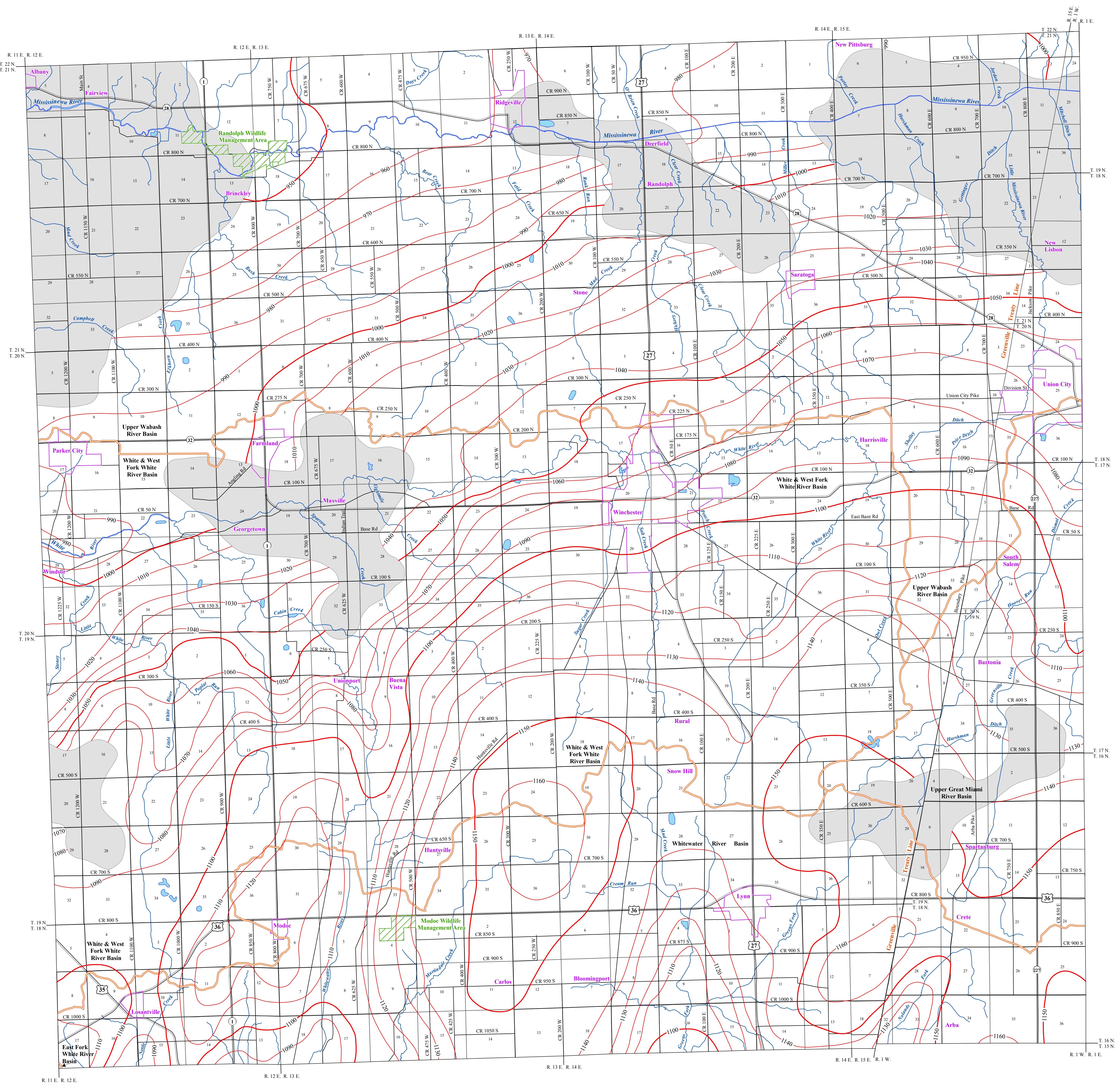


POTENTIOMETRIC SURFACE MAP OF THE UNCONSOLIDATED AQUIFERS OF RANDOLPH COUNTY, INDIANA



Randolph County, Indiana is located in the east-central section of the state and is adjacent to the Ohio border. The northern portion lies within the Upper Wabash River Basin and most of the central section is in the White and West Fork White River Basin. The far east-central portion lies primarily within the Upper Great Miami River Basin, while the southern section lies within the Whitewater River Basin. However, this excludes an extremely small part of the southwest corner that lies in the East Fork White River Basin.

The Potentiometric Surface Map (PSM) of the unconsolidated aquifers of Randolph County was mapped by contouring the elevations of 1206 static water-levels reported on well records received primarily over a 50 year period. These wells are completed in aquifers at various depths, and typically, under confined conditions (bounded by impermeable layers above and below the water bearing formation). However, some wells were completed under unconfined (not bounded by impermeable layers) settings. The mapped potentiometric surface contours are primarily for the upper 100 feet of the unconsolidated materials and utilize data for wells 100 feet or less in depth. If the shallow data was sparse or unavailable in an area, deeper wells were used to complement the mapping.

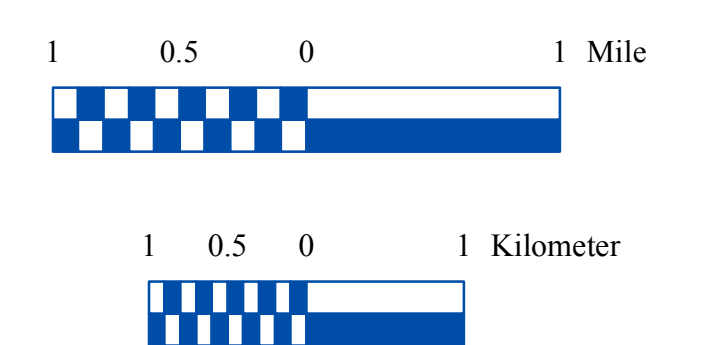
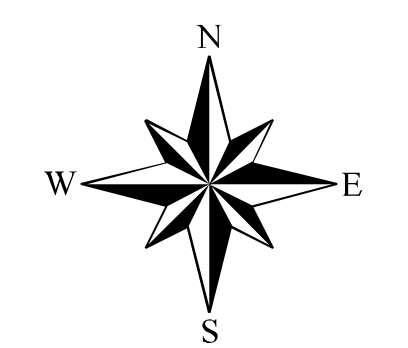
The potentiometric surface is a measure of the pressure on water in a water bearing formation. Water in an unconfined aquifer is at atmospheric pressure and will not rise in a well above the top of the aquifer, in contrast to groundwater in a confined aquifer which is under hydrostatic pressure and will rise in a well above the top of the water bearing formation.

Static water-level measurements in individual wells used to construct county PSM's are indicative of the water-level at the time of well completion. The groundwater level within an aquifer constantly fluctuates in response to rainfall, evapotranspiration, groundwater movement and pumping. Therefore, measured static water-levels in an area may differ due to local or seasonal variations. Because fluctuations in groundwater are typically small, static water-levels can be used to construct a generalized PSM. As a general rule, but certainly not always, groundwater flow approximates the overlying topography and intersects the land surface at major streams.

Universal Transverse Mercator (UTM) coordinates for the water wells were either physically obtained in the field, determined through address geocoding, or reported on water well records. The location of the water well records used to make the PSM were field verified. Elevation data were obtained from a digital elevation model. Quality control/quality assurance procedures were utilized to refine or remove data where errors were readily apparent.

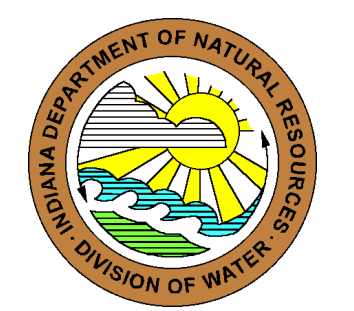
Potentiometric surface elevations range from a high of 1160 feet mean sea level (msl) in the south-central and southeastern corner of the county, to a low of 950 feet msl in the northwest section. Groundwater flow direction throughout the majority of the county is primarily to the north-northwest towards the Mississippi River and the White River. However, in the west-central portion flow is generally west and/or towards the White River. However, in the southern third of the county, along and south of the Whitewater River Basin boundary, groundwater flow is generally south out of the county towards the Whitewater River and its tributaries. In portions of the county where data is lacking and/or covered by thin or unproductive deposits, potentiometric surface elevation contours have not been extended through these areas.

The county PSM can be used to define the regional groundwater flow path and to identify significant areas of groundwater recharge and discharge. County PSM's represent overall regional characteristics and are not intended to be a substitute for site-specific studies.

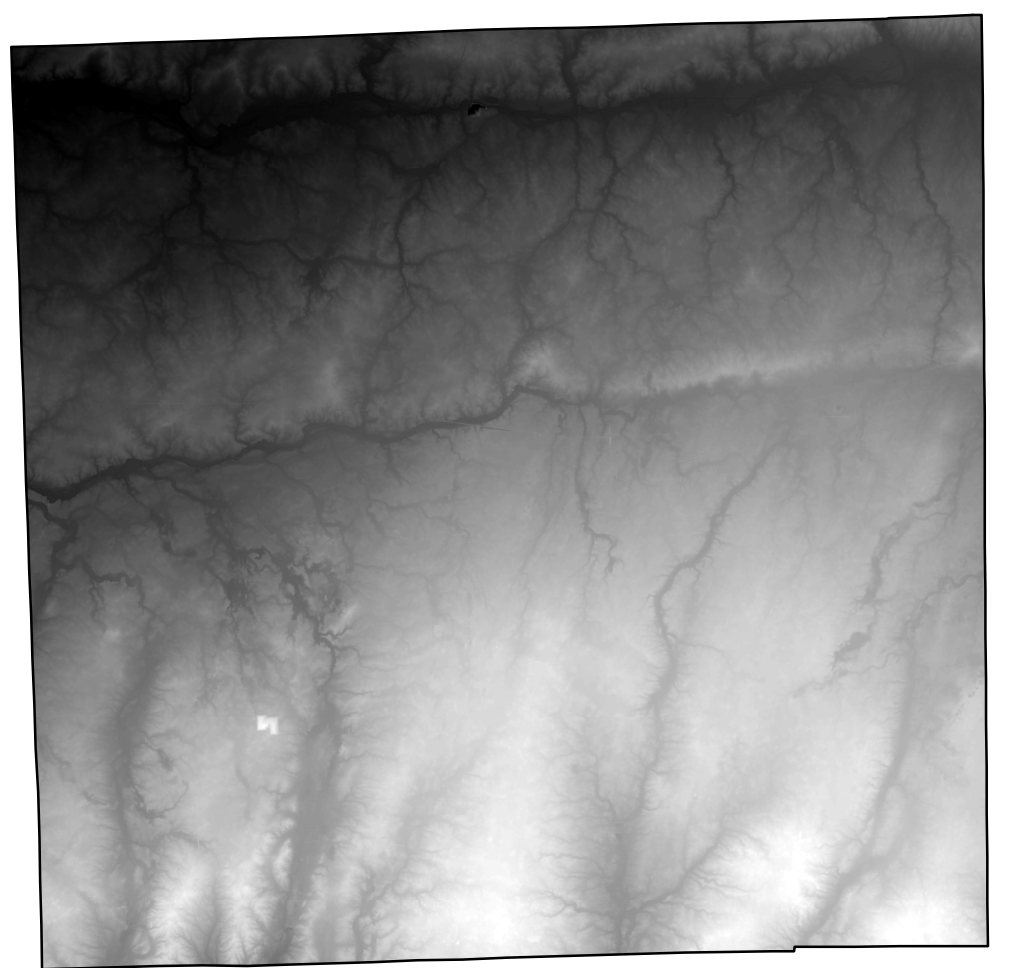


EXPLANATION

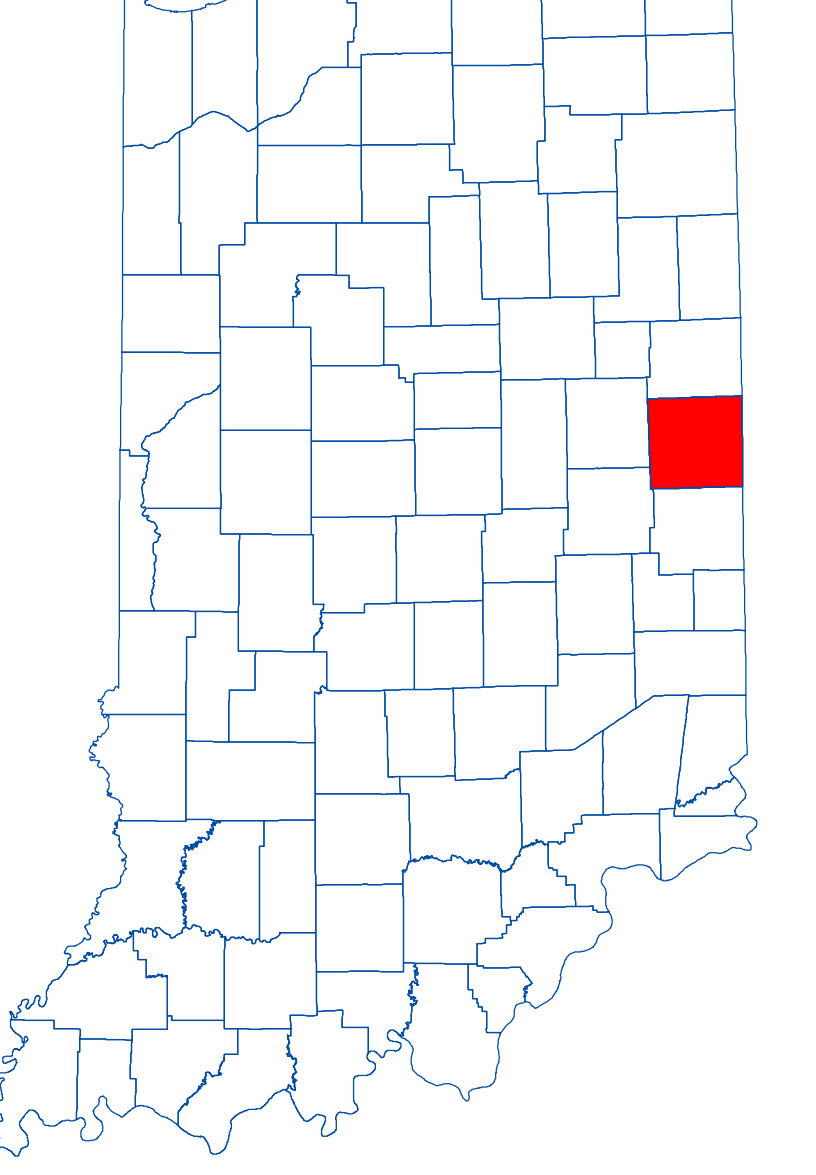
- Line of equal elevation, in feet above mean sea level
- Potentiometric Contour interval 10 feet
- Stream
- County Road
- State Road
- US Highway
- Basin Boundary
- Municipal Boundary
- State Managed Property
- Lake & River



Digital Elevation Model of Randolph County, Indiana



Location Map



Map Use and Disclaimer Statement

We request that the following agency be acknowledged in reports derived from this map: Indiana Department of Natural Resources, Division of Water.

This map was compiled by staff of the Indiana Department of Natural Resources, Division of Water using data believed to be reasonably accurate. However, a degree of error is inherent in all maps. This product is distributed "as is" without warranties of any kind, either expressed or implied. This map is intended for use only at the published scale.

This map is created from several existing shapefiles. Township and Range Lines of Indiana (line shapefile, 20020621), Land Survey Lines of Indiana (polygon shapefile, 20020621), and County Boundaries of Indiana (polygon shapefile, 20020621), are all from the Indiana Geological Survey and based on a 1:24,000 scale. Roads (TIGER and INDOT) (line shapefile, 2005) is from the Indiana Department of Transportation and based on a 1:100,000 scale. System1 (line shapefile, 2003) is from the Indiana Department of Transportation and based on a 1:24,000 scale. Incorporated Areas in Indiana 2000 (polygon shapefile, 20021000) is from the U.S. Census Bureau and based on a 1:100,000 scale. Hydrography, Streams (NHID) (line shapefile, 20081218), Rivers (NHID) (polygon shapefile, 20081218), and Lakes (NHID) (polygon shapefile, 20081218) are from the U.S. Geological Survey and based on a 1:24,000 scale. Basin boundaries are modified from Watershed Boundary Dataset (polygon shapefile, 2009) from the National Resource Conservation Service and based on a 1:24,000 scale. Managed Lands IDNR IN (polygon shapefile, 20100920) is from the Indiana Department of Natural Resources and based on a 1:24,000 scale. Digital Elevation Model image is derived from the Indiana Ortho/LIDAR Statewide Collection Program (2012). Randolph County Unconsolidated No Aquifer Material or Limited Data (polygon shapefile, Grove, 2014) and Potentiometric Surface Contours of the Unconsolidated Aquifers of Randolph County, Indiana (line shapefile, Grove, 2014) are based on a 1:24,000 scale.

Potentiometric Surface Map of the Unconsolidated Aquifers of Randolph County, Indiana

by
Glenn Grove
Division of Water, Resource Assessment Section

March 2014