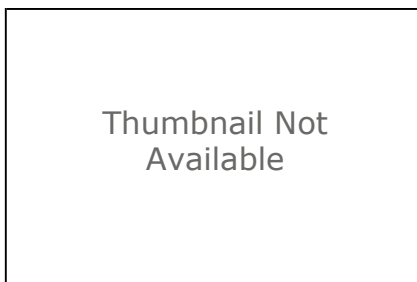


Bedrock Limited Data and Nonaquifer Areas for Hendricks County, Indiana

Shapefile



Tags

No data zone, water wells, bedrock aquifer, Indiana Department of Natural Resources (IDNR), Division of Water (DOW), Hendricks County, Indiana, USA

Summary

Display and/or analyses requiring spatial distribution of lack of static water levels in the bedrock aquifers of Hendricks County.

Description

This file is a digital geospatial polygon coverage of the lack of available aquifer static water level data within bedrock aquifers for Hendricks County in Indiana.

Credits

It is requested that the Indiana Department of Natural Resources, Division of Water be cited in any products generated from this data.

Use limitations

Acknowledgement of the following agency in products derived from these data: Indiana Department of Natural Resources, Division of Water. This map was compiled by staff of the Indiana Department of Natural Resources, Division of Water using data believed to be reasonably accurate. However, a degree of error is inherent in all maps. This product is distributed "as-is" without warranties of any kind, either expressed or implied. The maps are intended for use only at the published scale. The information on these media is proprietary to the State of Indiana, Indiana Department of Natural Resources, Division of Water. Any copying, adaptation, or distribution of these data without the express written consent of IDNR-DOW is discouraged. It is not recommended that these data be used for purposes other than general estimate of static water level elevations. Site specific conditions may vary considerably from mapped estimates.

Extent

West	-86.696386	East	-86.324278
North	39.925856	South	39.599546

Scale Range

Maximum (zoomed in)	1:50,000
Minimum (zoomed out)	1:5,000,000

ArcGIS Metadata ▶

Topics and Keywords ▶

THEMES OR CATEGORIES OF THE RESOURCE geoscientificInformation

* CONTENT TYPE Downloadable Data
EXPORT TO FGDC CSDGM XML FORMAT AS RESOURCE DESCRIPTION No

PLACE KEYWORDS Hendricks County, Indiana, USA

THEME KEYWORDS bedrock

THEME KEYWORDS static water level

THEME KEYWORDS groundwater

THEME KEYWORDS water wells

THEME KEYWORDS Indiana Department of Natural Resources (IDNR)

THEME KEYWORDS Division of Water (DOW)

Hide Topics and Keywords ▲

Citation ▶

TITLE Bedrock Limited Data and Nonaquifer Areas for Hendricks County, Indiana
CREATION DATE 2015-08-03 00:00:00
PUBLICATION DATE 2015-12-23 00:00:00

EDITION 1

PRESENTATION FORMATS * digital map

SERIES
NAME Bedrock Potentiometric Surface Map
ISSUE PSM 15-B

OTHER CITATION DETAILS
This map was compiled from multiple unpublished work maps based on USGS quadrangles at 1:24,000 scale: Bridgeport, Brownsburg, Clayton, Clermont, Coatsville, Danville, Eminence, Fayette, Hall, Lizton, Mooresville West, New Ross, North Salem, Plainfield, and Zionsville.

Hide Citation ▲

Citation Contacts ▶

RESPONSIBLE PARTY
ORGANIZATION'S NAME Indiana Department of Natural Resources, Division of Water
CONTACT'S ROLE publisher

CONTACT INFORMATION ▶
ADDRESS
DELIVERY POINT Indianapolis, Indiana, USA

[Hide Contact information ▲](#)

RESPONSIBLE PARTY

ORGANIZATION'S NAME Indiana Department of Natural Resources Division of Water
INDIVIDUAL'S NAME Robert K. Schmidt
CONTACT'S POSITION Resource Assessment Section
CONTACT'S ROLE originator

CONTACT INFORMATION ►

PHONE

VOICE (317) 234-1062
FAX (317) 233-4579

ADDRESS

TYPE both
DELIVERY POINT 402 W Washington Street W264
CITY Indianapolis
ADMINISTRATIVE AREA Indiana
POSTAL CODE 46204
COUNTRY US
E-MAIL ADDRESS rschmidt@dnr.in.gov

ONLINE RESOURCE

LOCATION www.in.gov/dnr/water/7256.htm
FUNCTION PERFORMED information

HOURS OF SERVICE

8:15am - 4:15pm M-F except Government Holidays

[Hide Contact information ▲](#)

[Hide Citation Contacts ▲](#)

Resource Details ►

DATASET LANGUAGES English (UNITED STATES)
DATASET CHARACTER SET utf8 - 8 bit UCS Transfer Format

STATUS completed
SPATIAL REPRESENTATION TYPE * vector

* PROCESSING ENVIRONMENT Microsoft Windows 7 Version 6.1 (Build 7601) Service Pack 1; Esri ArcGIS 10.3.1.4959

CREDITS

It is requested that the Indiana Department of Natural Resources, Division of Water be cited in any products generated from this data.

ARCGIS ITEM PROPERTIES

* NAME BED_Limited_Data_Nonaquifer_Hendricks_County
* SIZE 0.056
* LOCATION file:///\\iotisip01pa\dnrgis\$\\!Potentiometric\\Hendricks Revised 2015\\!_Web_Products\\Shape Files\\BED_Limited_Data_Nonaquifer_Hendricks_County.shp
* ACCESS PROTOCOL Local Area Network

[Hide Resource Details ▲](#)

Extents ►

EXTENT

DESCRIPTION

Extent used for searching

GEOGRAPHIC EXTENT

BOUNDING RECTANGLE

WEST LONGITUDE -85.644456

EAST LONGITUDE -85.331288

SOUTH LATITUDE 40.998355

NORTH LATITUDE 41.189792

EXTENT CONTAINS THE RESOURCE Yes

EXTENT

DESCRIPTION

Publication Date

GEOGRAPHIC EXTENT

GEOGRAPHIC DESCRIPTION

DESCRIPTION CONTAINS THE RESOURCE No

TEMPORAL EXTENT

DATE AND TIME 2015-08-03 00:00:00

EXTENT

GEOGRAPHIC EXTENT

BOUNDING RECTANGLE

EXTENT TYPE Extent used for searching

* WEST LONGITUDE -86.696386

* EAST LONGITUDE -86.324278

* NORTH LATITUDE 39.925856

* SOUTH LATITUDE 39.599546

* EXTENT CONTAINS THE RESOURCE Yes

EXTENT IN THE ITEM'S COORDINATE SYSTEM

* WEST LONGITUDE 526066.620496

* EAST LONGITUDE 557743.358066

* SOUTH LATITUDE 4383528.356160

* NORTH LATITUDE 4419572.500000

* EXTENT CONTAINS THE RESOURCE Yes

Hide Extents ▲

Resource Points of Contact ►

POINT OF CONTACT

ORGANIZATION'S NAME Indiana Department of Natural Resources Division of Water

INDIVIDUAL'S NAME Robert K. Schmidt

CONTACT'S POSITION Resource Assessment Section

CONTACT'S ROLE point of contact

CONTACT INFORMATION ►

PHONE

VOICE (317) 234-1062

FAX (317) 233-4579

ADDRESS

TYPE both

DELIVERY POINT 402 W Washington Street W264

CITY Indianapolis
ADMINISTRATIVE AREA Indiana
POSTAL CODE 46204
COUNTRY US
E-MAIL ADDRESS rschmidt@dnr.in.gov

ONLINE RESOURCE

LOCATION www.in.gov/dnr/water/7256.htm
FUNCTION PERFORMED download

HOURS OF SERVICE

8:15am - 4:15pm M-F except Government Holidays

[Hide Contact information ▲](#)

[Hide Resource Points of Contact ▲](#)

Resource Maintenance ►

RESOURCE MAINTENANCE

UPDATE FREQUENCY not planned

[Hide Resource Maintenance ▲](#)

Resource Constraints ►

CONSTRAINTS

LIMITATIONS OF USE

Acknowledgement of the following agency in products derived from these data: Indiana Department of Natural Resources, Division of Water. This map was compiled by staff of the Indiana Department of Natural Resources, Division of Water using data believed to be reasonably accurate. However, a degree of error is inherent in all maps. This product is distributed "as-is" without warranties of any kind, either expressed or implied. The maps are intended for use only at the published scale. The information on these media is proprietary to the State of Indiana, Indiana Department of Natural Resources, Division of Water. Any copying, adaptation, or distribution of these data without the express written consent of IDNR-DOW is discouraged. It is not recommended that these data be used for purposes other than general estimate of static water level elevations. Site specific conditions may vary considerably from mapped estimates.

LEGAL CONSTRAINTS

LIMITATIONS OF USE

The Indiana Department of Natural Resources, Division of Water has compiled this data set using data believed to be reasonably accurate. However, the Division makes no representation as to the accuracy, completeness, or usefulness of the data or data set. A degree of error is inherent in all maps. This map is intended for use only at the published scale. Reference to any specific commercial product, process, or service does not constitute an endorsement, recommendation, or favoring by the Division. Copyright 2015, Indiana Department of Natural Resources, Division of Water All Rights Reserved Any copying, adaptation, or distribution of these data without the express written consent of the Indiana Department of Natural Resources, Division of Water is discouraged.

ACCESS CONSTRAINTS other restrictions

OTHER CONSTRAINTS

This file is available to anyone, but access may be contingent on written request, specific terms relevant to the agency or person making the request, and/or current freedom of information statutes in the State of Indiana.

[Hide Resource Constraints ▲](#)

Spatial Reference ►

ARCGIS COORDINATE SYSTEM

- * TYPE Projected
- * GEOGRAPHIC COORDINATE REFERENCE GCS_North_American_1983
- * PROJECTION NAD_1983_UTM_Zone_16N
- * COORDINATE REFERENCE DETAILS
 - PROJECTED COORDINATE SYSTEM
 - WELL-KNOWN IDENTIFIER 26916
 - X ORIGIN -5120900
 - Y ORIGIN -9998100
 - XY SCALE 450445547.3910538
 - Z ORIGIN -100000
 - Z SCALE 10000
 - M ORIGIN -100000
 - M SCALE 10000
 - XY TOLERANCE 0.001
 - Z TOLERANCE 0.001
 - M TOLERANCE 0.001
 - HIGH PRECISION true
 - LATEST WELL-KNOWN IDENTIFIER 26916
 - WELL-KNOWN TEXT PROJCS["NAD_1983_UTM_Zone_16N",GEOGCS["GCS_North_American_1983",DATUM["D_North_American_1983",SPHEROID["GRS_1980",6378137.0,298.257222101]],PRIMEM["Greenwich",0.0],UNIT["Degree",0.0174532925199433]],PROJECTION["Transverse_Mercator"],PARAMETER["False_Easting",500000.0],PARAMETER["False_Northing",0.0],PARAMETER["Central_Meridian",-87.0],PARAMETER["Scale_Factor",0.9996],PARAMETER["Latitude_Of_Origin",0.0],UNIT["Meter",1.0],AUTHORITY["EPSG",26916]]

REFERENCE SYSTEM IDENTIFIER

- * VALUE 26916
- * CODESPACE EPSG
- * VERSION 8.6.2

Hide Spatial Reference ▲

Spatial Data Properties ►

VECTOR ►

- * LEVEL OF TOPOLOGY FOR THIS DATASET geometry only

GEOMETRIC OBJECTS

- FEATURE CLASS NAME BED_Limited_Data_Nonaquifer_Hendricks_County
 - * OBJECT TYPE composite
 - * OBJECT COUNT 4

Hide Vector ▲

ARCGIS FEATURE CLASS PROPERTIES ►

- FEATURE CLASS NAME BED_Limited_Data_Nonaquifer_Hendricks_County
 - * FEATURE TYPE Simple
 - * GEOMETRY TYPE Polygon
 - * HAS TOPOLOGY FALSE
 - * FEATURE COUNT 4
 - * SPATIAL INDEX TRUE
 - * LINEAR REFERENCING FALSE

Hide ArcGIS Feature Class Properties ▲

[Hide Spatial Data Properties ▲](#)

Data Quality ►

SCOPE OF QUALITY INFORMATION ►

RESOURCE LEVEL dataset

[Hide Scope of quality information ▲](#)

DATA QUALITY REPORT - COMPLETENESS OMISSION ►

MEASURE DESCRIPTION

In conducting the mapping, the author(s) evaluated hundreds of water well records, especially those having relatively complete information on well location, static water level, well depth, ground elevation, and lithology. This layer is based on areas in the county with sparse information because of lack of well records or incomplete records, or poorly producing aquifers.

[Hide Data quality report - Completeness omission ▲](#)

DATA QUALITY REPORT - QUANTITATIVE ATTRIBUTE ACCURACY ►

MEASURE DESCRIPTION

The layer was created after a thorough documentation of well locations and water well record details.

[Hide Data quality report - Quantitative attribute accuracy ▲](#)

DATA QUALITY REPORT - ABSOLUTE EXTERNAL POSITIONAL ACCURACY ►

MEASURE DESCRIPTION

The locations of many wells were field checked and the locations posted on 7.5 minute topographic maps. Visual confirmation of wells was not always possible. Many locations were based only on the street address, driving directions, or other location information provided on the well record.

[Hide Data quality report - Absolute external positional accuracy ▲](#)

[Hide Data Quality ▲](#)

Lineage ►

PROCESS STEP ►

WHEN THE PROCESS OCCURRED 2015-08-03 00:00:00

DESCRIPTION

Coverage was selected by careful evaluation of the lack of water well records within an area by determine a minimum of one mile from available data. Using field located wells that contained complete and reasonable information a half mile buffer was applied. Areas outside of the compiled buffer were considered a no data zone and delineated as such.

PROCESS CONTACT

ORGANIZATION'S NAME Indiana Department of Natural Resources Division of Water

INDIVIDUAL'S NAME Robert K. Schmidt

CONTACT'S POSITION Resource Assessment Section
CONTACT'S ROLE processor

CONTACT INFORMATION ►

PHONE

VOICE (317) 234-1062

FAX (317) 233-4579

ADDRESS

TYPE both

DELIVERY POINT 402 W Washington Street W264

CITY Indianapolis

ADMINISTRATIVE AREA Indiana

POSTAL CODE 46204

COUNTRY US

E-MAIL ADDRESS rschmidt@dnr.in.gov

ONLINE RESOURCE

LOCATION www.in.gov/dnr/water/7256.htm

FUNCTION PERFORMED download

[Hide Contact information ▲](#)

[Hide Process step ▲](#)

SOURCE DATA ►

DESCRIPTION

Water well records from the IDNR-DOW well record database; USGS topography maps; various consultant geotechnical reports

[Hide Source data ▲](#)

[Hide Lineage ▲](#)

Geoprocessing history ►

PROCESS

PROCESS NAME

DATE 2012-10-04 11:41:36

TOOL LOCATION c:\program files\arcgis\desktop10.0\ArcToolbox\Toolboxes\Data Management Tools.tbx\Project

COMMAND ISSUED

```
Project Bdrk_No_Aquifer_Material_Limited_Data J:\!
Potentiometric\Hendricks\Shapefiles\Bdrk_No_Aquifer_Material_Limited_Data1.shp PROJCS
['NAD_1983_UTM_Zone_16N',GEOGCS['GCS_North_American_1983',DATUM
['D_North_American_1983',SPHEROID['GRS_1980',6378137.0,298.257222101]],PRIMEM
['Greenwich',0.0],UNIT['Degree',0.0174532925199433]],PROJECTION
['Transverse_Mercator'],PARAMETER['False_Easting',500000.0],PARAMETER
['False_Northing',0.0],PARAMETER['Central_Meridian',-87.0],PARAMETER
['Scale_Factor',0.9996],PARAMETER['Latitude_Of_Origin',0.0],UNIT['Meter',1.0]]
NAD_1927_To_NAD_1983_NADCON PROJCS['NAD_1927_UTM_Zone_16N',GEOGCS
['GCS_North_American_1927',DATUM['D_North_American_1927',SPHEROID
['Clarke_1866',6378206.4,294.9786982]],PRIMEM['Greenwich',0.0],UNIT
['Degree',0.0174532925199433]],PROJECTION['Transverse_Mercator'],PARAMETER
['False_Easting',500000.0],PARAMETER['False_Northing',0.0],PARAMETER['Central_Meridian',-
87.0],PARAMETER['Scale_Factor',0.9996],PARAMETER['Latitude_Of_Origin',0.0],UNIT['Meter',1.0]]
```

INCLUDE IN LINEAGE WHEN EXPORTING METADATA No

[Hide Geoprocessing history ▲](#)

Distribution ►

DISTRIBUTOR ►

CONTACT INFORMATION

ORGANIZATION'S NAME Indiana Department of Natural Resources Division of Water
INDIVIDUAL'S NAME Robert K. Schmidt
CONTACT'S POSITION Resource Assessment Section
CONTACT'S ROLE originator

CONTACT INFORMATION ►

PHONE

VOICE (317) 234-1062
FAX (317) 233-4579

ADDRESS

TYPE both
DELIVERY POINT 402 W Washington Street W264
CITY Indianapolis
ADMINISTRATIVE AREA Indiana
POSTAL CODE 46204
COUNTRY US
E-MAIL ADDRESS rschmidt@dnr.in.gov

ONLINE RESOURCE

LOCATION www.in.gov/dnr/water/7256.htm
FUNCTION PERFORMED download

HOURS OF SERVICE

8:15am - 4:15pm M-F except Government Holidays

[Hide Contact information ▲](#)

[Hide Distributor ▲](#)

DISTRIBUTION FORMAT

* NAME Shapefile

TRANSFER OPTIONS

UNITS OF DISTRIBUTION Shapefile
* TRANSFER SIZE 0.056

ONLINE SOURCE

LOCATION <http://www.in.gov/dnr/water/7256.htm>
DESCRIPTION Data and Maps

[Hide Distribution ▲](#)

Fields ►

DETAILS FOR OBJECT [BED_Limited_Data_Nonaquifer_Hendricks_County](#) ►

* TYPE Feature Class

* ROW COUNT 4

DEFINITION

No Data Limited Aquifer Zone

DEFINITION SOURCE

Robert K. Schmidt

FIELD FID ►

- * ALIAS FID
- * DATA TYPE OID
- * WIDTH 4
- * PRECISION 0
- * SCALE 0
- * FIELD DESCRIPTION
Internal feature number.
- * DESCRIPTION SOURCE
Esri
- * DESCRIPTION OF VALUES
Sequential unique whole numbers that are automatically generated.

Hide Field FID ▲

FIELD Shape ►

- * ALIAS Shape
- * DATA TYPE Geometry
- * WIDTH 0
- * PRECISION 0
- * SCALE 0
- * FIELD DESCRIPTION
Feature geometry.
- * DESCRIPTION SOURCE
ESRI
- * DESCRIPTION OF VALUES
Coordinates defining the features.

Hide Field Shape ▲

FIELD AREA ►

- * ALIAS AREA
- * DATA TYPE Double
- * WIDTH 19
- * PRECISION 18
- * SCALE 11

Hide Field AREA ▲

FIELD PERIMETER ►

- * ALIAS PERIMETER
- * DATA TYPE Double
- * WIDTH 19
- * PRECISION 18

* SCALE 11

Hide Field PERIMETER ▲

FIELD COUNTY_PO_ ►

* ALIAS COUNTY_PO_
* DATA TYPE Integer
* WIDTH 9
* PRECISION 9
* SCALE 0

Hide Field COUNTY_PO_ ▲

FIELD COUNTY_PO1 ►

* ALIAS COUNTY_PO1
* DATA TYPE Integer
* WIDTH 9
* PRECISION 9
* SCALE 0

Hide Field COUNTY_PO1 ▲

FIELD POLY_ ►

* ALIAS POLY_
* DATA TYPE Integer
* WIDTH 9
* PRECISION 9
* SCALE 0

Hide Field POLY_ ▲

FIELD SUBCLASS ►

* ALIAS SUBCLASS
* DATA TYPE String
* WIDTH 13
* PRECISION 0
* SCALE 0

Hide Field SUBCLASS ▲

FIELD SUBCLASS_ ►

* ALIAS SUBCLASS_
* DATA TYPE Integer
* WIDTH 9
* PRECISION 9
* SCALE 0

Hide Field SUBCLASS_ ▲

FIELD RINGS_OK ►

* ALIAS RINGS_OK
* DATA TYPE Integer
* WIDTH 7
* PRECISION 7
* SCALE 0

[Hide Field RINGS_OK ▲](#)

FIELD **RINGS_NOK** ▶
* ALIAS **RINGS_NOK**
* DATA TYPE **Integer**
* WIDTH **7**
* PRECISION **7**
* SCALE **0**

[Hide Field RINGS_NOK ▲](#)

FIELD **NAME_U** ▶
* ALIAS **NAME_U**
* DATA TYPE **String**
* WIDTH **15**
* PRECISION **0**
* SCALE **0**

[Hide Field NAME_U ▲](#)

FIELD **NAME_L** ▶
* ALIAS **NAME_L**
* DATA TYPE **String**
* WIDTH **15**
* PRECISION **0**
* SCALE **0**

[Hide Field NAME_L ▲](#)

FIELD **NCAPC** ▶
* ALIAS **NCAPC**
* DATA TYPE **Integer**
* WIDTH **9**
* PRECISION **9**
* SCALE **0**

[Hide Field NCAPC ▲](#)

[Hide Details for object BED_Limited_Data_Nonaquifer_Hendricks_County ▲](#)

[Hide Fields ▲](#)

Metadata Details ▶

METADATA LANGUAGE **English (UNITED STATES)**
METADATA CHARACTER SET **utf8 - 8 bit UCS Transfer Format**

SCOPE OF THE DATA DESCRIBED BY THE METADATA * **dataset**
SCOPE NAME * **dataset**

* LAST UPDATE **2016-01-20**

ARCGIS METADATA PROPERTIES
METADATA FORMAT **ArcGIS 1.0**

METADATA STYLE FGDC CSDGM Metadata
STANDARD OR PROFILE USED TO EDIT METADATA FGDC

CREATED IN ARCGIS FOR THE ITEM 2016-01-20 08:59:06
LAST MODIFIED IN ARCGIS FOR THE ITEM 2016-01-20 11:34:58

AUTOMATIC UPDATES
HAVE BEEN PERFORMED Yes
LAST UPDATE 2016-01-20 11:34:41

ITEM LOCATION HISTORY
ITEM COPIED OR MOVED 2016-01-20 08:59:06
FROM M:\!Potentiometric\Hendricks Revised 2015
\Final_Shape_Files\BED_Limited_Data_Nonaquifer_Hendricks_County
TO \\iotisip01pa\dnrgis\$\!Potentiometric\Hendricks Revised 2015\
_Web_Products\BED_Limited_Data_Nonaquifer_Hendricks_County

[Hide Metadata Details ▲](#)

Metadata Contacts ►

METADATA CONTACT
ORGANIZATION'S NAME Indiana Department of Natural Resources Division of Water
INDIVIDUAL'S NAME Robert K. Schmidt
CONTACT'S POSITION Resource Assessment Section
CONTACT'S ROLE originator

CONTACT INFORMATION ►

PHONE

VOICE (317) 234-1062
FAX (317) 233-4579

ADDRESS

TYPE both
DELIVERY POINT 402 W Washington Street W264
CITY Indianapolis
ADMINISTRATIVE AREA Indiana
POSTAL CODE 46204
COUNTRY US
E-MAIL ADDRESS rschmidt@dnr.in.gov

ONLINE RESOURCE

LOCATION www.in.gov/dnr/water/7256.htm
FUNCTION PERFORMED information

HOURS OF SERVICE

8:15am - 4:15pm M-F except Government Holidays

[Hide Contact information ▲](#)

METADATA CONTACT
ORGANIZATION'S NAME Robert K. Schmidt, IDNR Division of Water, Resource Assessment Section

[Hide Metadata Contacts ▲](#)

Metadata Maintenance ►

MAINTENANCE

UPDATE FREQUENCY not planned

Hide Metadata Maintenance ▲

Metadata Constraints ►

LEGAL CONSTRAINTS

ACCESS CONSTRAINTS other restrictions

OTHER CONSTRAINTS

Access constraints: This metadata file is intended to accompany the subject geospatial set. This file may be updated, and the most recent version is available by contacting the IDNR Division of Water.

Hide Metadata Constraints ▲

FGDC Metadata (read-only) ▼