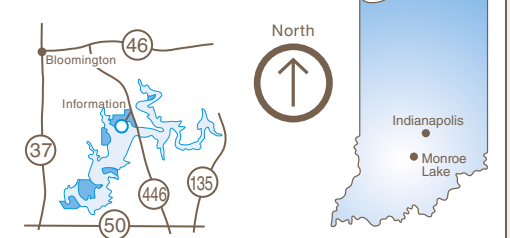


MONROE LAKE

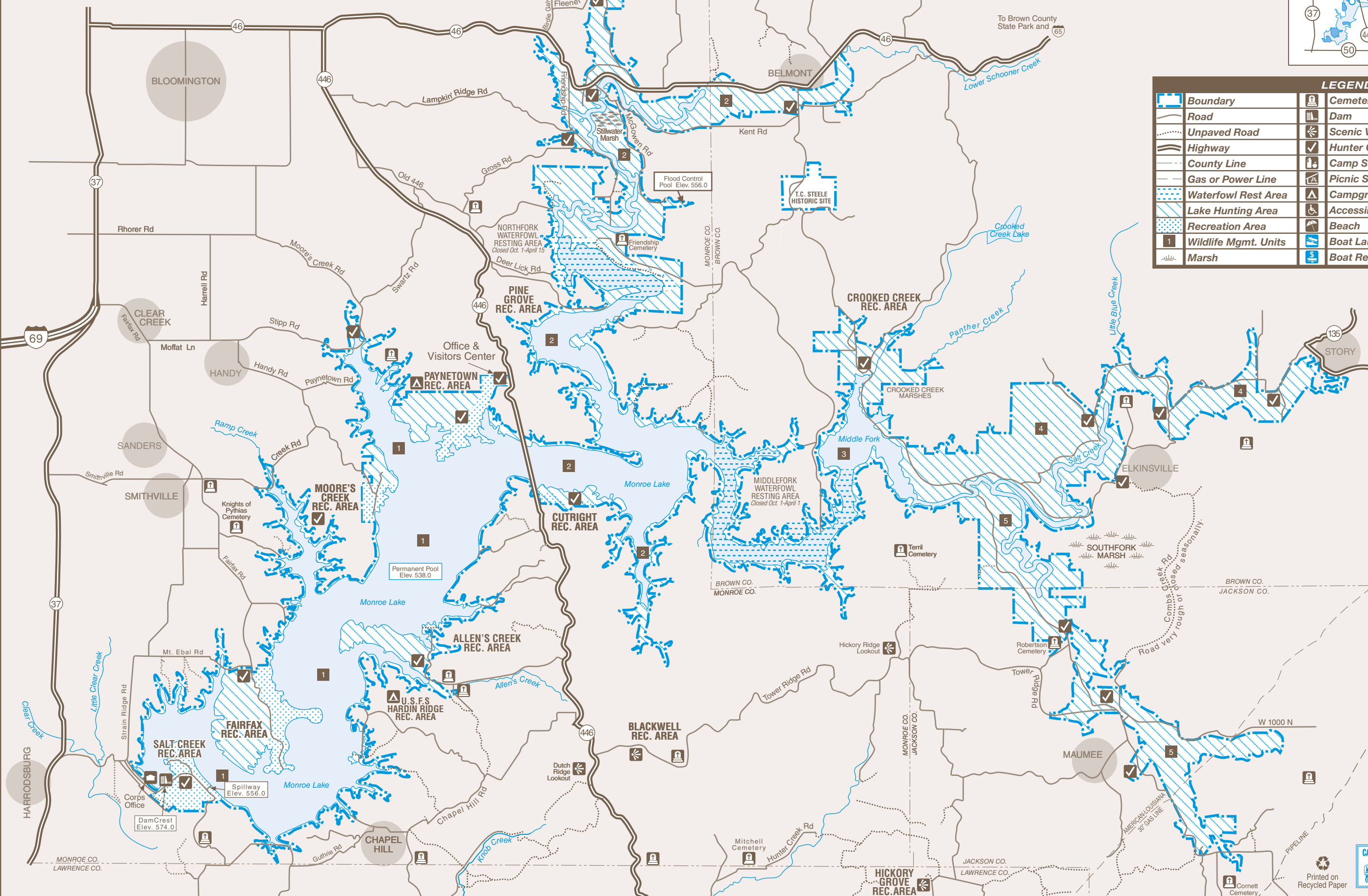
4850 South State Road 446 • Bloomington, IN 47401 • 812-837-9546
23,952 acres-10,750-acre lake
Established 1966

DNR
Indiana Department
of Natural Resources

LOCATION MAP



LEGEND			
	Boundary		Cemetery
	Road		Dam
	Unpaved Road		Scenic View
	Highway		Hunter Check Stn.
	County Line		Camp Store
	Gas or Power Line		Picnic Shelter
	Waterfowl Rest Area		Campground
	Lake Hunting Area		Accessible
	Recreation Area		Beach
	Wildlife Mgmt. Units		Boat Launch
	Marsh		Boat Rental
	Trail Head		Ranger Event
	Marina		Gas Station
	Picnic Area		Playground
	Restrooms		Showers
	Drinking Water		



FACILITIES	
Paynetown SRA	
Fairfax SRA	
Cutright SRA	
Moore's Creek SRA	
Salt Creek SRA	
Pinegrove	
Allen's Creek SRA	
Crooked Creek	
Hardin Ridge	
Dam & Tailwater	

RECYCLE
Place used beverage cans
in the park's marked recycling
containers. Thank you.

CARRY IN CARRY OUT
Please carry out all trash you produce
in order to keep your park clean and
beautiful for others to enjoy.

Printed on
Recycled Paper

Take a step back in time and visit the unique town of Nashville, known for its fine artists and craftsmen, or drive into Bloomington and experience the Indiana University campus.

Limestone quarries, abundant in the area south of Monroe, provide building stone worldwide and offer a different type of tourist attraction. The entire area, with its rolling topography, bluffs, scenic streams, and heavily wooded sections offer outstanding scenic vistas as well as numerous recreational opportunities.

PURPOSE AND PROJECT HISTORY

Monroe Lake is operated primarily for flood control and low-flow augmentation in the Salt Creek and White River watersheds. The project also forms an integral unit of the comprehensive flood-control plan for the Ohio and Mississippi rivers. The lake is maintained at or near permanent pool level except when flood waters are stored for flood control.

The main functions of the property include resource management, recreation and water supply to surrounding communities. The lake area was developed in accordance with a long-range program and provides for a beneficial use of reservoir lands, fish-and-wildlife resources, and an opportunity for outdoor activities associated with large bodies of water.

Monroe Lake was selected for construction under the general authorization for flood control in an Act of Congress approved July 3, 1958. The lake was constructed by the U.S. Army Corps of Engineers. The State of Indiana contributed 54.1 percent of the project's cost.

The project was dedicated in October 1964, and opened in 1966.

Monroe Lake and environs cover a total of 23,952 acres. Of this amount, 23,508 acres are leased to the State of Indiana for management with the remaining 444 acres owned by the state. At the summer pool level of 538 feet above sea level, 10,750 acres of water form the lake. The land areas, consisting of 13,202 acres in Monroe, Brown and Jackson counties, are managed for wildlife and recreational uses. More than 1.5 million visitors come to Monroe Lake annually.

For a list of park events, visit interpretiveservices.IN.gov

ACTIVITIES AND FACILITIES

BEACH—Swimming is available during open hours from Memorial Day through Labor Day at the beaches in Paynetown and Fairfax recreation areas. Modern bathhouses at both locations provide showers, dressing facilities and restrooms. Swimming during unguarded times from sunrise to sunset is at your own risk. No swimming from sunset to sunrise.

BOAT RAMPS—Available at nine locations. Boat launch ramps are not marked on the map but are listed under the facilities for the State Recreation Areas on the map side.

CAMPING—A total of 312 campsites are available consisting of 222 electric sites with electricity, modern restrooms and showers, picnic table and grills; 90 non-electric sites. Occupancy limited to 14 consecutive nights. Reservations available through the Central Reservation System.

FISHING—Bass, bluegill, catfish, crappie, walleye and hybrid stripers provide the most activity for fishermen. State license required and available at lake office.

HIKING—Easy to moderate marked trails are available for hiking all year. Off-road uses of vehicles, bicycles and horses are not permitted.

HUNTING—All hunters are required to register at check-in stations daily. Hunting in Waterfowl Resting Areas by special permit only. Deer, grouse, turkey, squirrels, doves and rabbits are the primary game species. Excellent waterfowl hunting is available during the season. Waterfowl hunting information available at Paynetown visitors center. Read and obey all signs.

INTERPRETIVE NATURALIST SERVICE—Explore the world of natural resources while enjoying interpretive and recreational programs. Program schedules are available at InterpretiveServices.IN.gov or call 812-837-9967.

MARINA—Seasonal mooring on docks or buoys is available at Paynetown, Moore's Creek, Cutright and Fairfax Recreation areas. Other services provided at Fairfax, Cutright and Paynetown marinas include fuel, food concessions and rental boats. Paynetown and Fairfax provide pump-out stations.

PICNIC AREAS—Picnicking is available in a number of areas, most containing tables, grills, toilet facilities, a playfield and shelter. Reservations for shelters are available through the Central Reservation System.

RULES AND REGULATIONS

- No person shall conduct or participate in a fishing tournament on a reservoir property administered by the Division of State Parks, except under a license.
- No person shall launch, dock, or moor a watercraft or other floating device, except for approved periods and at sites designated by the department for those purposes. No person shall leave watercraft unattended in a courtesy dock.
- Any firearm, including a handgun, BB gun, air gun, CO2 gun, bow and arrow, or paint gun must be unloaded or un-nocked and stored in a case or locked in a vehicle except in accordance with the terms of a one-day hunting permit and record card obtained from a hunter sign-in station and possessed by the person in the field for a specified date.
- A person who possesses a pet must attend it at all times and keep the animal caged or on a leash no more than 6 feet long.
- Vending or advertising without permission of the DNR is prohibited.
- Camping is permitted only in designated camping areas. Youth groups must be under adult supervision.
- Fires shall be built only in designated places.
- Comply with the Carry In/Carry Out trash policy in all day-use areas. Overnight guests must put waste in receptacles provided for that purpose.
- Motorists shall observe posted speed limits and park only in designated areas (25 mph maximum).
- No person shall possess or consume an alcoholic beverage at a swimming beach.
- Drinking water should be taken only from pumps, hydrants or fountains provided for that purpose. This water is tested regularly for purity.
- Report lost or found articles to the property office.
- Feeding of wildlife is prohibited.
- SCUBA by permit only.
- Metal detector use is by permit only.

For a complete list of rules and regulations, inquire at property office.

THIS IS YOUR LAKE

Visitors shall observe the rules, which are designed to fulfill the purposes for which the state operates reservoir properties, namely, to manage these areas for the enhancement of wildlife and for the public's use and enjoyment.

CENTRAL RESERVATION SYSTEM



Reservations for all types of camping, family cabins, and shelters at state parks, reservoirs and forests can be made online or by calling toll-free. Call: 1-866-6campIN (1-866-622-6746) Online: camp.IN.gov

Reservations for the Indiana State Park Inns and Inn-operated cabins can be made online or by phone. Call: 1-877-lodges1 (1-877-563-4371) Online: IndianalInns.com

FOR MORE INFORMATION



Write: Monroe Lake
Paynetown Visitors Center
4850 South State Road 446
Bloomington, IN 47401
Call: 812-837-9546
Online: on.IN.gov/monroelake

SPECIAL NOTE

Receipts from admission and service charges are used to help defray the operation and maintenance costs of the lake. List of fees available in the main office.



Please carry out all trash you produce in order to keep your park clean and beautiful for others to enjoy!

See everything Indiana State Parks has to offer at stateparks.IN.gov.

Subscribe to Outdoor Indiana magazine today, Visit OutdoorIndiana.org or call 317-233-3046.

The programs, services, facilities, and activities of the Indiana Department of Natural Resources are available to everyone. DNR prohibits discrimination on the basis of race, color, national origin, age, sex, or disability. If you believe that you have been discriminated against in any program, activity, or facility as described above, or if you desire further information please write to: Department of Natural Resources, Executive Office, 402 W. Washington Street, W256, Indianapolis, IN 46204, (317) 232-4020.

DESCRIPTION OF HIKING TRAILS

TRAIL & DESCRIPTION	DISTANCE	DIFFICULTY
Blue Bird Trail Forest and field in Paynetown State Recreation Area.	1.25 miles	Moderate
Tree Trek Trail Forest Ecosystem interpretive trail in Paynetown State Recreation Area.	.5 miles	Easy
Turkey Trot Trail Hike-In/Boat-In in Allen's Creek State Recreation Area.	1.75 miles	Moderate
Whitetail Trail Access trail for walk-in visitors at Paynetown State Recreation Area.	1 mile	Moderate
Big Oak Trail This trail is a one-mile wooded hike with moderate difficulty located at Fairfax SRA.	1 mile	Moderate

PLEASE STAY ON MARKED TRAILS.

DNR PROPERTIES NEARBY

- YELLOWWOOD STATE FOREST**—camping, mountain bike trails, bridle trails, hiking trails, wildlife viewing, picnic area, playground, fishing, ice fishing, hunting, trapping, shelterhouse, boat launch, boat rentals
- BROWN COUNTY STATE PARK**—bridle trails, cabins, camping, fishing, hiking trails, Inn, interpretive services, interpretive center, mountain biking, picnicking, play/sports area
- MORGAN-MONROE STATE FOREST**—boating, boat ramps, camping, fishing, hiking trails, hunting, picnicking, shelter house, group camp, trapping

Pick up an Indiana Recreation Guide for more information.

Please let wild animals remain wild.

Feeding deer is prohibited. Feeding of wild animals can result in harm to both animals and people. Animals who depend on handouts become a nuisance to visitors and a danger to themselves. Please lock up all food and coolers inside cars or campers. Roll up car windows tightly.

DNR Indiana Department of Natural Resources



The largest body of water in Indiana, Monroe Lake offers a wide range of multiple-use recreational and seasonal opportunities.

The lake is nestled in the rolling hills and woodlands of south central Indiana, about 10 miles southeast of Bloomington. The dam is on Salt Creek, a tributary of the East Fork of White River. Most of the lake area lies in Monroe County, with a smaller area in Brown and Jackson counties.

The lake is accessible from state roads 37, 46, 446 and 50 by way of many local roads.

A number of other state and federal recreational areas surround the property, including Morgan-Monroe, Yellowwood and Jackson-Washington state forests.

Hoosier National Forest, including Deam Wilderness Area, surrounds a large part of the area. Minutes away lie Brown County, Spring Mill and McCormick's Creek state parks, which attract thousands of visitors each year during the fall foliage season.