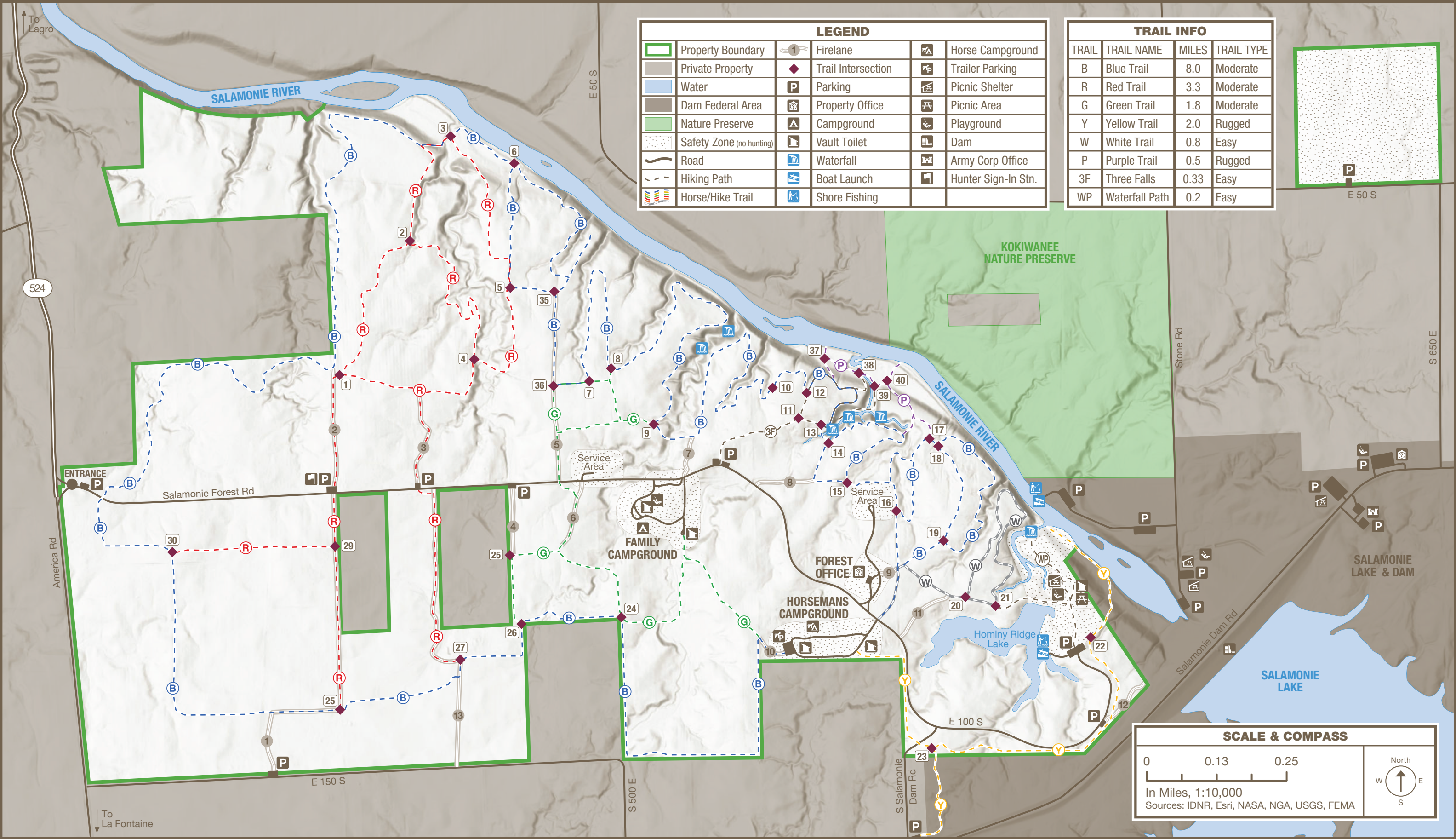


# SALAMONIE RIVER STATE FOREST

5400 E. Salamonie Forest Rd. | Lagro, IN 46941 | 260-782-0430  
954 Acres | Established 1939





WELCOME TO

SALAMONIE RIVER

STATE FOREST

OUR STORY

The name Salamonie is said to be derived from the Native American word “O-sah-mo-nee,” which means “yellow paint.” Native Americans made yellow paint from the bloodroot plant, which grew in great abundance along the winding banks of the river.

Salamonie River State Forest was created as a demonstration riverside forest for the reclamation of eroded land. In the mid 1930s, local people assisted the state in purchasing the hilly land and bluffs along the river. Most of the land’s topsoil had eroded away, making reclamation of the area a major challenge.

To reclaim the land, a 200-member Civilian Conservation Corps (CCC) camp was created. The CCC designed and planned the forest and recreation facilities and opened a stone quarry. Several hundred acres of land were reforested. Many recreation facilities were built, including Hominy Ridge Lake and the large stone shelter house nearby.

Since then, funds from Benjamin Harrison Conservation Trust have been used to purchase additional acreage. Today, the forest encompasses 954 acres offering many recreational opportunities.

HORSEBACK RULES & ETIQUETTE

- A DNR Horse Tag is required for each horse.
- One horse trailer is permitted per campsite.
- Horses must be tied to hitching rails in the Horse Campground. Tying to trees or spigot lines, or setting up corrals or electric fences is prohibited.
- Owners of unruly and disruptive animals that pose a safety hazard may be asked to remove such animals from the property without refund.
- Horseback riding is prohibited on all forest roads/ roadsides unless it is a horse trail. Roads in the Horse Campground are an exception.
- Wagons and buggies are prohibited from using firelanes and trails.
- Horses are prohibited in the family campground, picnic areas, and forest office/service area.
- Please be courteous to other riders and hikers.
- Clean your campsite of all manure, hay, and bedding before leaving. Manure bins are located throughout the campground.

HORSE TRAILS

- Riding horses on state property requires a daily or annual horse tag. Tags can be purchased at the property office during business hours.

TRAIL & DESCRIPTION	DISTANCE	COLOR
B. Blue Trail	8.0 mi.	Blue

This winding trail varies in topography, closely following the property boundary. It wanders around several ravines and overlooks the Salamonie River in several locations. It also provides views of rocky gorges with waterfalls.

R. Red Trail	3.3 mi.	Red
--------------	---------	-----

This connecting trail meanders through stands of hardwoods, conifers and open fields.

G. Green Trail	1.8 mi.	Green
----------------	---------	-------

This alternate trail provides a shorter route back to the horse camp from the Blue Trail. It offers views of the pine stands and an oak plantation.

Y. Yellow Trail	2.0 mi.	Yellow
-----------------	---------	--------

Provides riders from outside the forest access to the trail system. The east arm ends at a scenic view of a waterfall.

W. White Trail	0.8 mi.	White
----------------	---------	-------

Begins next to the forest office and meanders east, with views of Hominy Ridge Lake and the Salamonie River.

P. Purple Trail	0.5 mi.	Purple
-----------------	---------	--------

Provides access downslope to the base of two waterfalls and the Salamonie River.

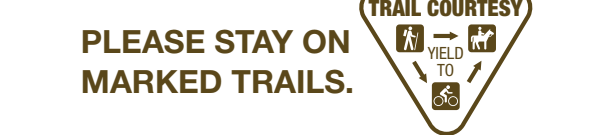
HIKING TRAILS

TRAIL & DESCRIPTION	DISTANCE	DIFFICULTY
3F. Three Falls Trail	0.33 mi.	Easy

This short trail provides hikers with a scenic view of multiple waterfalls and rock overhangs.

WP. Waterfall Path	0.2 mi.	Easy
--------------------	---------	------

Short trail leaves from shelter house and heads north to waterfall.



DNR PROPERTIES NEARBY

- Find more DNR properties at [on.IN.gov/recfinder](https://on.IN.gov/recfinder).

SALAMONIE LAKE

Mnt. Biking, horse riding, hiking, wildlife watching, interpretive services, nature center, disc golf, playground, fishing, ice fishing, hunting, trapping, picnicking, beach swimming, water skiing, boat launch, boat rentals, camping

J.E. ROUSH LAKE FISH & WILDLIFE AREA

Wildlife watching, fishing, ice fishing, hunting, trapping, shooting range, archery range, dog training, water skiing, boat launch, camping

BOOK YOUR STAY • RESERVE TODAY

GET OUT and GO CAMPING

Make your reservation for:

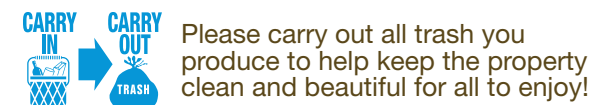
Camping

Cabins

Shelters

Rec. Building

1-866-6campIN (1-866-622-6746) [camp.IN.gov](https://camp.IN.gov)



FOLLOW US



OUTDOOR INDIANA Subscribe to Outdoor Indiana magazine today, Visit [OutdoorIndiana.org](https://OutdoorIndiana.org) or call 317-233-3046.

The programs, services, facilities, and activities of the Indiana Department of Natural Resources are available to everyone. DNR prohibits discrimination on the basis of race, color, national origin, age, sex, or disability. If you believe that you have been discriminated against in any program, activity, or facility as described above, or if you desire further information please write to: Department of Natural Resources, Executive Office, 402 W. Washington Street, W256, Indianapolis, IN 46204, (317) 232-4020.

ACTIVITIES & FACILITIES

- Look for these icons on the map.

**BOAT LAUNCH:** Located on the east side of Hominy Ridge Lake. Only electric trolling motors are allowed.

**CAMPING:** Primitive family campground with playground and vault toilets. Primitive horseman’s campground with hitching rails on each site for those camping with horses. All campers must register upon arrival to the forest. Self check-in stations are located at the entrance to each campground.

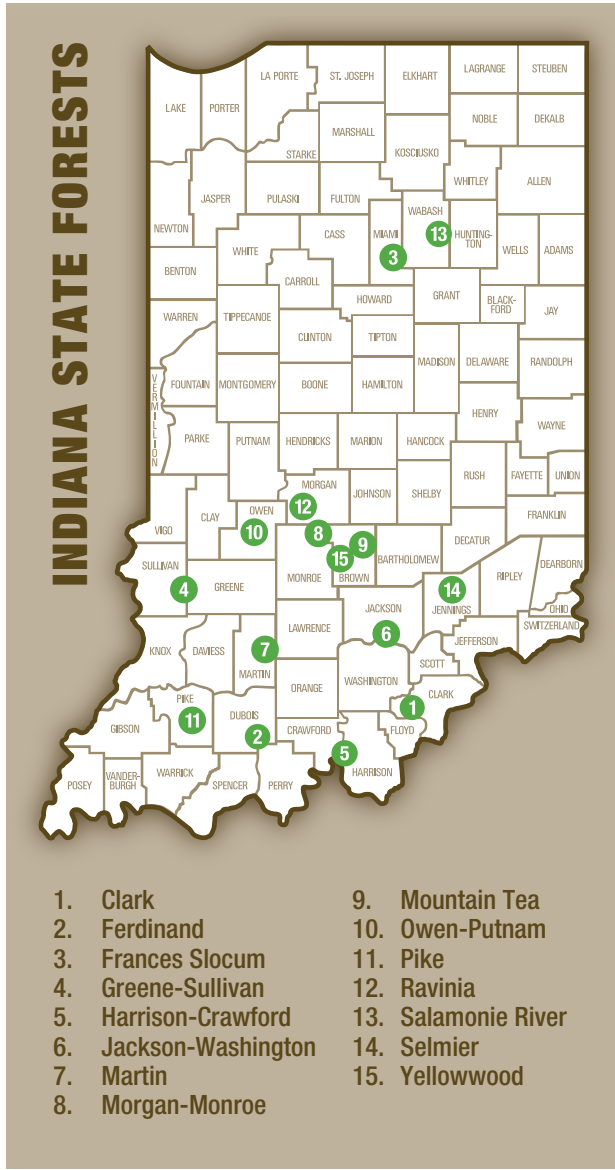
**FISHING:** Available in Hominy Ridge Lake, which contains largemouth bass, bluegill, redear sunfish, and catfish. The forest also provides access to the Salamonie River, which offers opportunities to catch largemouth bass, bluegill, redear sunfish, catfish, smallmouth bass, and walleye.

**HIKING:** A cascading waterfall is just a short hike from the shelter house. The Three Falls Trail near the primitive campground is a 0.33-mile trail leading to an area with a trio of waterfalls in close proximity. Hiking is also allowed on the 9 miles of fire trails. Hikers are advised to wear hunter orange or other bright clothing while on the trails during hunting season in late fall.

**HORSEBACK RIDING:** Horseback riders can enjoy approximately 15 miles of wooded trails that offer views of waterfalls, rocky gorges, and flowing rivers and streams. Please stay on marked trails and respect the rules. Horseback riders are advised to wear hunter orange or other bright clothing while on the trails during hunting season in late fall.

**HUNTING:** In-season deer, squirrel, rabbit, raccoon, and wild turkey hunting is available.

**SHELTER HOUSE:** Close to Hominy Ridge Lake is a spacious shelter house equipped with two fireplaces. Picnic tables are scattered throughout the area, and a playground is provided for younger visitors. Available for day use and reservable at the property office during business hours.



STATE FOREST MISSION

To manage, protect and conserve the timber, water, wildlife, soil and related forest resources for the use and enjoyment of present and future generations, and to demonstrate proper forest management to Indiana landowners.



SALAMONIE RIVER

STATE FOREST



Salamonie River State Forest  
5400 E Salamonie Forest Rd  
Lagro, IN, 46941

(260) 782-0430  
[on.IN.gov/salamonieriversf](https://on.IN.gov/salamonieriversf)  
[salamonieriverstfor@dnr.IN.gov](mailto:salamonieriverstfor@dnr.IN.gov)

[on.IN.gov/forestry](https://on.IN.gov/forestry)