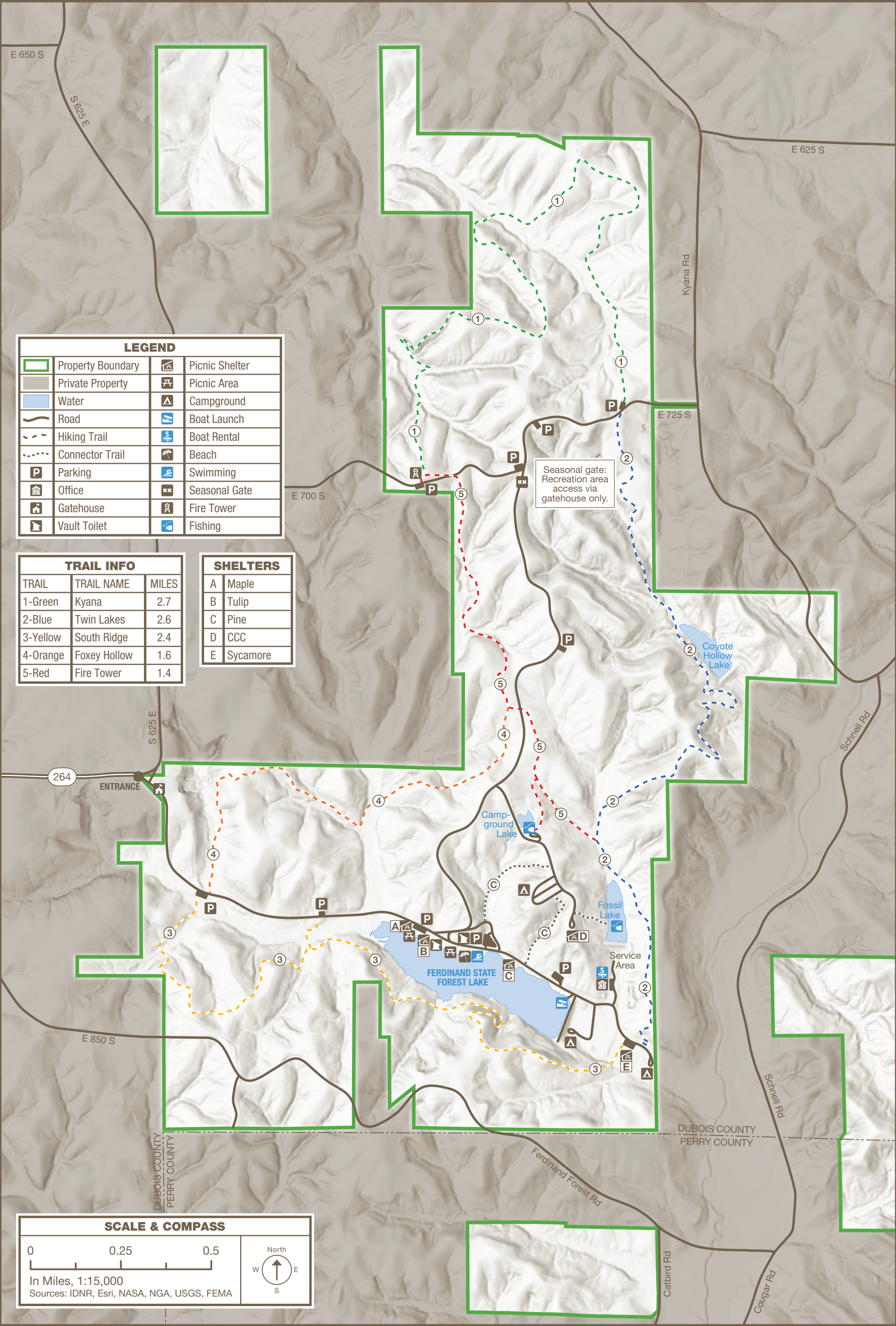


# Ferdinand State Forest

6583 East State Road 264 | Ferdinand, IN 47532 | 812-827-2857  
7,700 Acres | Established 1934





# WELCOME TO FERDINAND STATE FOREST



## OUR STORY

Ferdinand State Forest is located six miles northeast of the town of Ferdinand on State Road 264 and was originally established in 1934 with land donated by local citizens. The Civilian Conservation Corps worked to improve the land and facilities during those early years. The property has continued to grow since that time to the current 7,700 acres of forested land available for public use.

Visitors may encounter evidence of previous land use, such as old home-sites and pine trees that were planted for erosion control on old eroded fields. This managed forest property includes more than 10 miles of trails for hiking and biking, several lakes with fishing and boating opportunities, hunting areas, boat rental, campsites, picnic shelters, playgrounds, and a beach.



## TRAIL RULES & SAFETY

- Bikers should yield the right of way to hikers.
- Wearing helmets and safety equipment is highly recommended.
- Stay on designated trails only.
- Only non-motorized bicycles are permitted
- Off-road cycling permit required. Available at office.
- Please try to avoid skidding on downslopes and wheel spinning on upslopes.
- Overnight camping along the trails is prohibited.
- Maximum speed is 15 mph.
- Off-road vehicles, horses, motorcycles and ATVs are prohibited from all trails and fire lanes.

PLEASE STAY ON  
MARKED TRAILS.



## HIKING & BIKING TRAILS

- For safety, please stay on marked trails.
- Trail users are advised to wear hunter orange or bright colored clothing during hunting season.

TRAIL & DESCRIPTION	DISTANCE	COLOR
1. <b>Kyana</b>	2.7 mi.	<b>Green</b>

This trail starts at the fire tower and ends at the beginning of the Twin Lakes Trail on Co. Rd. 700 S. It follows portions of fire lanes 5 & 6 and passes a home site, wildlife pond and a valley with a footbridge crossing. Look for green rectangular blazes.

2. <b>Twin Lakes</b>	2.6 mi.	<b>Blue</b>
----------------------	---------	-------------

This trail starts at the intersection of Kyana Trail and Co. Rd. 700 S. It follows portions of fire lanes 7 & 4 passing Coyote Hollow and Fossil Lakes before ending at the Sycamore Shelter. Scenic hardwood forests and pine areas can be viewed. Look for blue rectangular blazes.

3. <b>South Ridge</b>	2.4 mi.	<b>Yellow</b>
-----------------------	---------	---------------

This trail starts at the Twin Oaks parking area and ends near the Sycamore Shelter, following portions of fire lanes 9 & 12. It follows the high ridge overlooking the main lake and crosses a footbridge. Look for yellow rectangular blazes.

4. <b>Foxey Hollow</b>	1.6 mi.	<b>Orange</b>
------------------------	---------	---------------

This trail spurs off the Fire Tower Trail and heads to the Twin Oaks parking area following portions of fire lane 3. It passes through red and white pine stands along a 2016 pine opening and a yellow poplar plantation. Look for orange rectangular blazes.

5. <b>Fire Tower</b>	1.4 mi.	<b>Red</b>
----------------------	---------	------------

This trail starts at the fire tower and ends at the Twin Lakes intersection. There is also a spur trail to the main campground, exiting near the pond. White and red pine stands can be viewed. Look for red rectangular blazes.



## ACTIVITIES & FACILITIES

- Look for these icons on the map.



**BEACH:** The swimming beach is available from the Saturday of Memorial Day weekend through Labor Day. Restrooms, dressing facilities, and showers are available.



**BOATING:** Rowboat and canoe rental is available on Ferdinand Lake from mid-April through October.



**BOAT LAUNCH:** A boat launch ramp is located on the east side of Ferdinand Lake. Only electric trolling motors are allowed.



**CAMPING:** Primitive (class C) camping is available for a fee. Campsites are available on a first-come, first-served basis. Self-register for camping at the campground check-in booth. Vault toilets, seasonal drinking water, picnic tables and grills are available.



**FISHING:** Bass, bluegill and other small game fish are common. Fishing is permitted in Ferdinand Lake, Coyote Hollow Lake, Campground Lake, and Fossil Lake. A valid state fishing license is required.



**HIKING:** More than 10 miles of moderate hiking trails are available.



**HUNTING:** Whitetail deer, turkey, squirrel, fox, and raccoon are common. Valid hunting license required. See separate hunting map.



**MOUNTAIN BIKING:** Allowed on the five named trails, but not on the connector trails.



**PICNIC AREAS:** First-come, first-served or reserve by calling the property office. Available for day-use. Includes tables and grills.

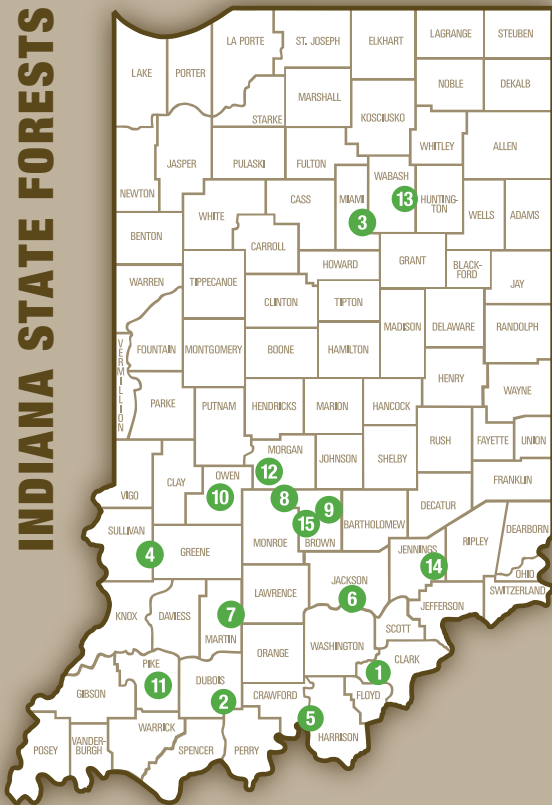


**SHELTERS:** First-come, first-served. Available for day-use. Includes tables and grills.



**SWIMMING:** Available from the Saturday of Memorial Day weekend through Labor Day. Swimming is permitted only in the Ferdinand Lake beach area. Playground located nearby.

## INDIANA STATE FORESTS



1. Clark
2. Ferdinand
3. Frances Slocum
4. Greene-Sullivan
5. Harrison-Crawford
6. Jackson-Washington
7. Martin
8. Morgan-Monroe
9. Mountain Tea
10. Owen-Putnam
11. Pike
12. Ravinia
13. Salamonie River
14. Selmier
15. Yellowwood

## STATE FOREST MISSION

To manage, protect and conserve the timber, water, wildlife, soil and related forest resources for the use and enjoyment of present and future generations, and to demonstrate proper forest management to Indiana landowners.



## DNR PROPERTIES NEARBY

- Find more DNR properties at [on.IN.gov/recfinder](https://on.IN.gov/recfinder).

### PATOKA LAKE

biking, hiking, wildlife watching, interpretive services, nature center, disc golf course, playgrounds, historic features, fishing, ice fishing, hunting, trapping, archery, shelter houses, swimming, water skiing, boat launch, boat rentals, restaurant, camping

### LINCOLN STATE PARK

hiking, wildlife watching, interpretive services, nature center, playgrounds, historic features, fishing, shelter houses, swimming, boat launch, boat rentals, cabin rentals, camping

## BOOK YOUR STAY • RESERVE TODAY

### GET OUT and GO CAMPING

Make your reservation for:



Camping



Shelters



Cabins



Rec. Building



1-866-6campIN  
(1-866-622-6746)



[camp.IN.gov](https://camp.IN.gov)



Please carry out all trash you produce to help keep the property clean and beautiful for all to enjoy!



## FOLLOW US



OUTDOOR  
INDIANA

Subscribe to Outdoor Indiana magazine today, Visit [OutdoorIndiana.org](https://OutdoorIndiana.org) or call 317-233-3046.

The programs, services, facilities, and activities of the Indiana Department of Natural Resources are available to everyone. DNR prohibits discrimination on the basis of race, color, national origin, age, sex, or disability. If you believe that you have been discriminated against in any program, activity, or facility as described above, or if you desire further information please write to: Department of Natural Resources, Executive Office, 402 W. Washington Street, W256, Indianapolis, IN 46204, (317) 232-4020. © 09/2025 Indiana Department of Natural Resources

**DNR**  
Indiana Department  
of Natural Resources

# FERDINAND STATE FOREST



Ferdinand State Forest  
6583 E. State Road 264  
Ferdinand, IN 47532

(812) 827-2857

[on.IN.gov/FerdinandSF](https://on.IN.gov/FerdinandSF)

[ferdinandsf@dnr.IN.gov](mailto:ferdinandsf@dnr.IN.gov)

[on.IN.gov/forestry](https://on.IN.gov/forestry)