

## White River Bend Wildlife Management Area

White River Bend WMA is located northwest of Washington in Daviess County and is managed by Glendale Fish & Wildlife Area. This property totals 765 acres of mostly low-lying floodplain forest and fields.

### History

White River Bend WMA was purchased by Indiana DNR and opened for outdoor recreation in 2012. The property is protected in the lifelong Wetland Reserve Program (WRP). WRP preserves and improves wetlands to provide recreational opportunities and wildlife habitat in areas that may otherwise be used for agricultural purposes.

### Amenities

No amenities are provided at this property.

### Access

- The parking lot is located on the southwest side of the property off County Road 150 N. Property may be accessed by foot traffic only beyond the parking area.
- Property provides hunting opportunities for waterfowl, deer, turkey, and other upland game.
- Property is open year-round. Visitors engaged in hunting activities must check in at the self-service kiosk at the parking lot.

### Prohibited Activities

- Camping and open fires
- Operating motorized vehicles outside of designated parking area
- Biking, off-road travel

All state and federal laws apply.

### Permitted Activities

- Hunting: Deer, turkey, waterfowl, and small game species; all hunting seasons and bag limits apply.
- Foraging: Mushrooms, berries, and nuts may be gathered.
- Wildlife Viewing: While there are no designated or maintained hiking trails, visitors are encouraged to explore the property.
- Fishing: The East Fork of the White River borders the western side of the property, providing fishing opportunities for a variety of species.
- Trapping: Property trapping permit required; contact Glendale FWA for more information.

For additional information about this property, please contact:

Glendale Fish & Wildlife Area

6001 E 600 S

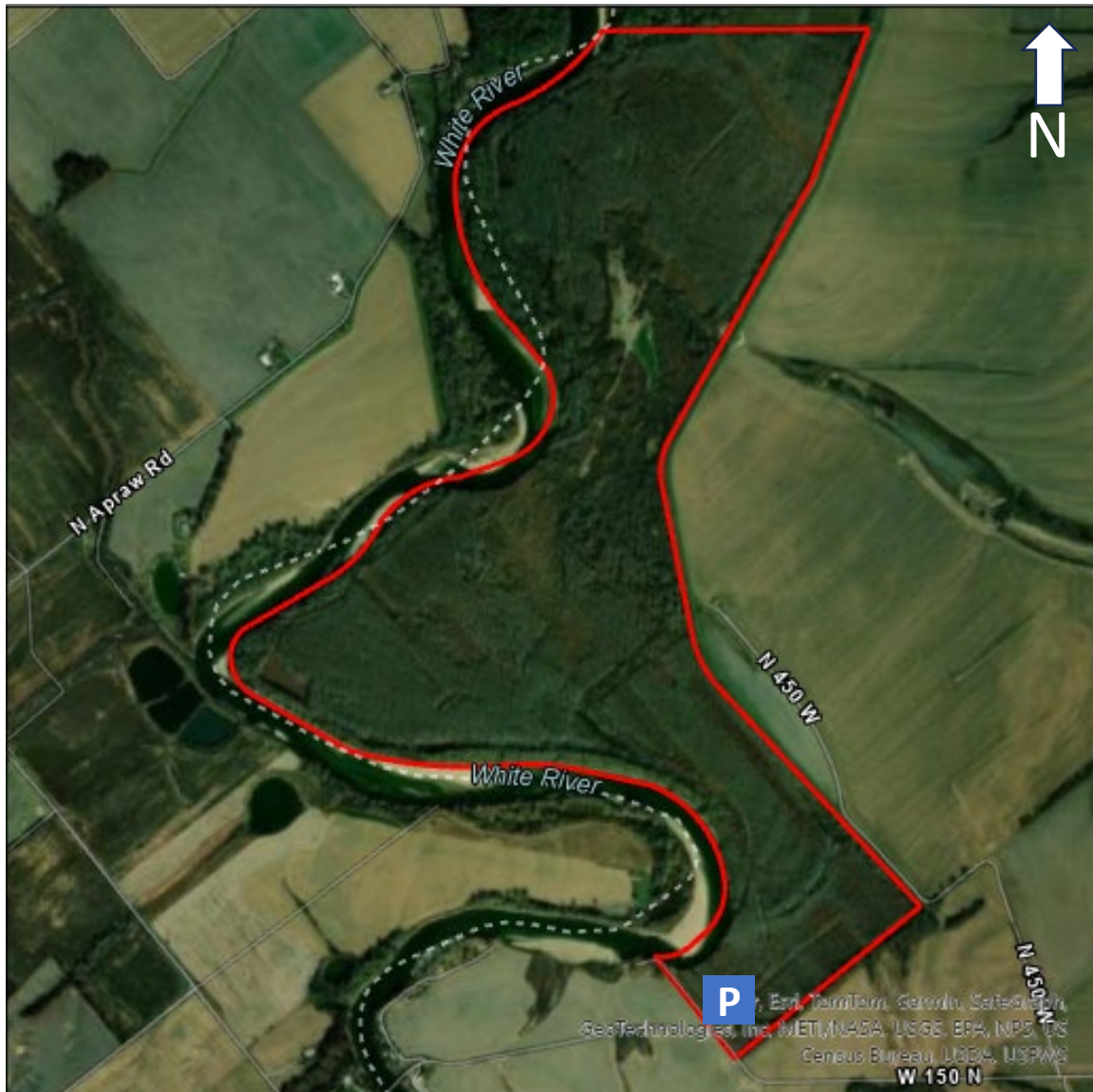
Montgomery, IN 47558

<https://www.IN.gov/dnr/fish-and-wildlife/properties/glendale-fwa/>

812-674-0168

[GlendaleFWA@dnr.IN.gov](mailto:GlendaleFWA@dnr.IN.gov)

## White River Bend Wildlife Management Area



Beginning at Glendale FWA (6001 E 600 S, Montgomery, IN 47558), head north to CR 600 S. Head west on CR 600 S for approximately 1.5 miles before turning right and heading north on E 500 S (S Glendale Road). Stay on E 500 S for 2 miles before turning and heading north on SR-257. Head north on SR-257 for approximately 4.5 miles before turning left and heading west on US-50. Stay on US-50 for another 4.5 miles before turning right and heading north on S 300 W. Stay on S 300 W for 0.25 miles before turning left and heading west on W National Hwy for another 0.25 miles. Then turn right and head north on S 300 W for 2.5 miles. Turn left on W 150 N and head west for another 2.25 miles. The parking area is on the north side of the road.

GPS coordinates for the parking area: 87.2599034 W, 38.6815617 N

All boundaries on the map are approximate.