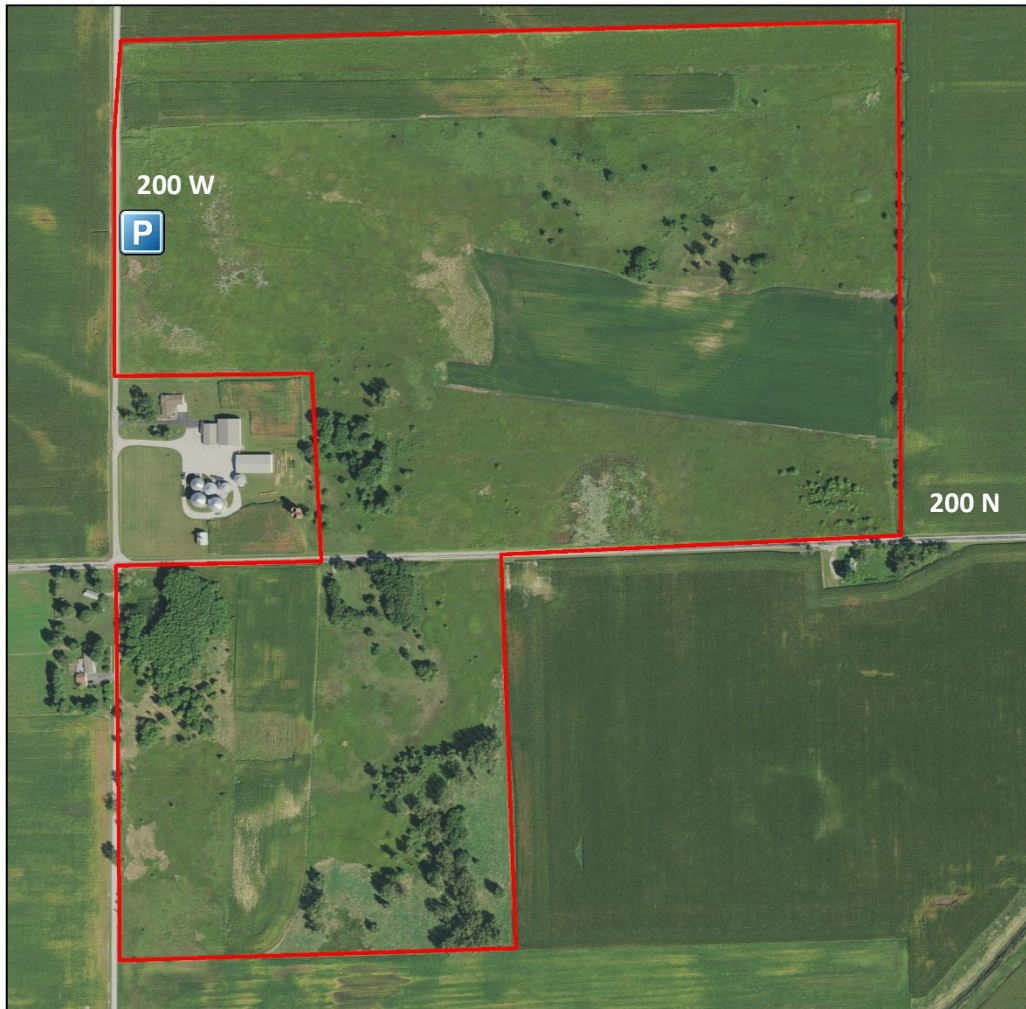


White County One Game Bird Area

White County, Indiana



White County One Game Bird Area is a 135-acre property. It was purchased in 1989 with Game Bird Habitat Stamp funds. There are dwellings near this parcel, so use caution while hunting in those areas. Respect the safety zones.

Access is by written permit only and is awarded only for hunting opportunities, research, and volunteer conservation work. No other access is granted. Call Willow Slough FWA at 219-285-2704 for more information.

Directions: From Reynolds, travel S.R. 421 north 2 miles to C.R. 200 N. Go west on 200 N. and travel 2 miles to C.R. 200 W. Go north on 200 W. for $\frac{1}{4}$ a mile. Parking will be on the east side of the road. Park by the wooden sign.

GPS coordinates for the parking area: (40.783174, -86.909966). All boundaries on the map are approximate.