

**Lake Information:** Plover (67 acres) connected Sandpiper (17 acres); 31 feet max depth  
**Located:** Driftwood State Fishing Area; Edinburgh, IN; Johnson/Bartholomew County  
**Access:** Boat ramp west shore  
**GPS Coordinates:** N 39.34625°, W -85.98202°  
**Amenities:** Shoreline fishing access, boat ramps  
**Outboard Motor Restriction:** Electric only

**Recent Stocking:** 420 Muskellunge annually, 2,500 Channel Catfish biannually

**Best Fishing:** Crappie, Bluegill, Muskellunge

**DNR Contact Information:**

Nicholas Haurert, Fish Management District 4  
 2650 State Road 44, Martinsville, IN 46151  
 (765) 342-5527; D4Fish@dnr.IN.gov

## Muskie

- All of the Muskies collected in the 2016 survey were greater than 36" with an estimated Muskie population of 2.4 Muskies/acre in Sandpiper Pit.
- During the spring, the flats in both Plover and Sandpiper Pits produce fish. Fall anglers typically cast bucktails and Bull Dawgs, but jigging in late fall and winter has been successful for anglers.
- Anglers have reported catching 50"+ fish from 2005 to present.



48" Muskie collected from a 2016 netting survey.

## Other Species

### Bluegill

- High catch rates of 7-8" Bluegill. Anglers have reported catching Bluegill up to 9.5".
- Bluegill harvest peaks in May while fish are on beds. Anglers report catching fish suspended near timber on the west shore of Plover Pit during the summer.

Muskie, Bluegill, and Crappie Catch during 2016 netting surveys.

Species	Size Class (in)	Number	Percent
	Muskie		
	38.0-41.9	1	11.1
	42.0-49.9	4	44.4
Bluegill	<3.0	16	11.3
	3.0-5.9	33	23.2
	6.0-6.9	38	26.8
	7.0-7.9	45	31.7
	8.0+	10	7.0
Crappie	<5.0	6	14.0
	5.0-7.9	13	30.2
	8.0-9.9	11	25.6
	10.0-11.9	10	23.3
	12.0-14.9	3	7.0

### Crappie

- Crappie peak harvest is in May, with anglers catching fish over 14".
- Anglers report catching fish suspended near timber on the west shore of Plover Pit during the summer.

## About the area

- The pit lakes are connected via a small channel within the Driftwood State Fishing Area with 3 boat ramps.
- This area is perfect for those looking to avoid pleasure boaters or those fishing from smaller watercraft. Other amenities include hiking trails and public hunting.
- Driftwood State Fishing Area is located less than 4 miles west of Edinburgh and I-65. Edinburgh is as it is home to the Edinburgh Premium Outlets, which has over 85 stores. There are also a number of hotels, campgrounds, and restaurants in the area.

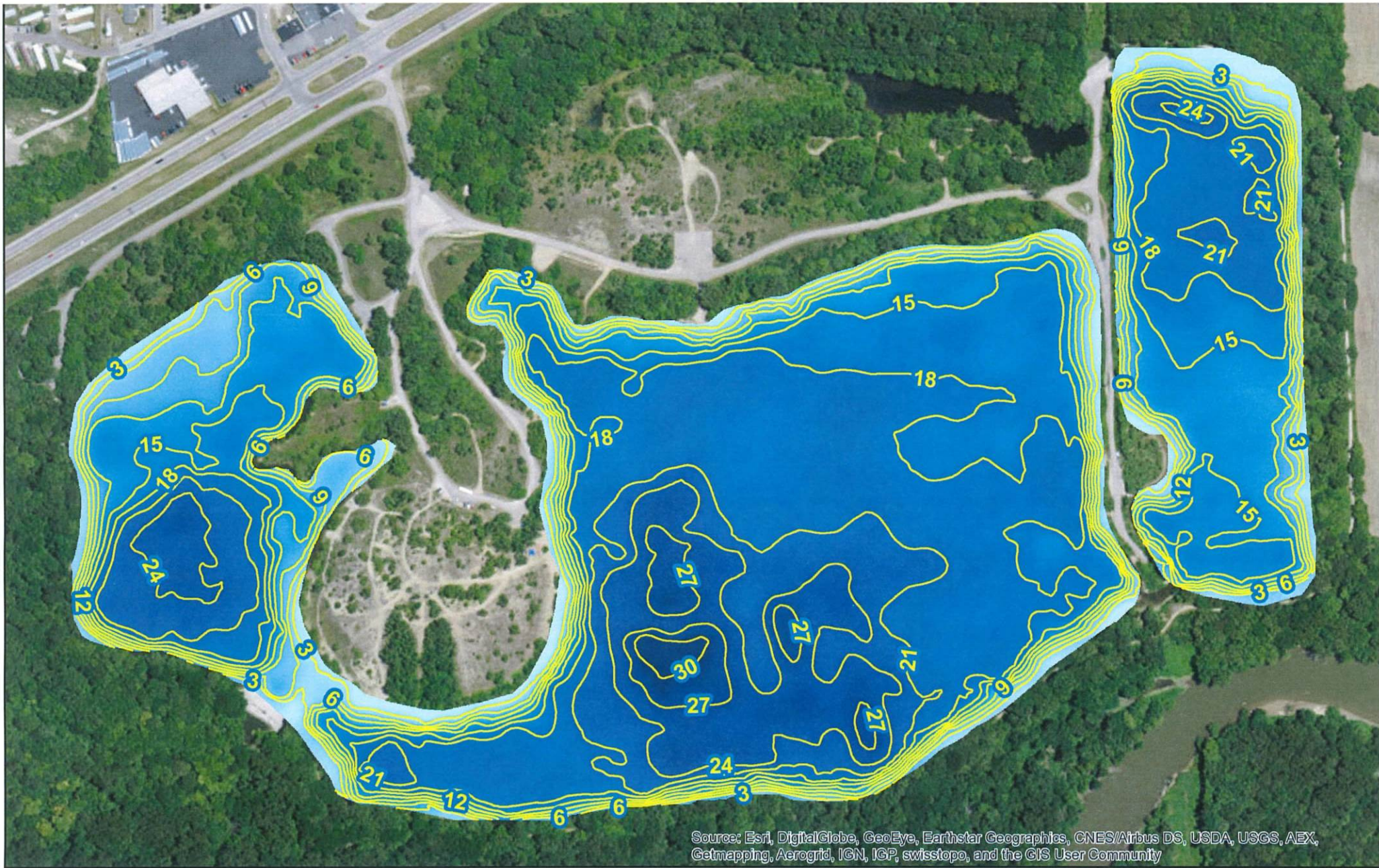


Your purchase of fishing equipment and motor boat fuel supports boating access and Sport Fish Restoration.

Indiana Fishing Regulation Guide:

<http://www.in.gov/dnr/fishwild/2347.htm>

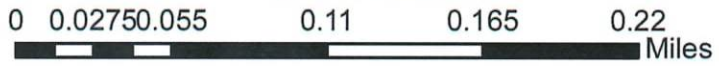




Source: Esri, DigitalGlobe, GeoEye, Earthstar Geographics, CNES/Airbus DS, USDA, USGS, AEX, Getmapping, Aerogrid, IGN, ICP, swisstopo, and the GIS User Community



Plover and Sandpiper Lake  
 Bartholomew County  
 67 and 16.5 acres  
 8/8/2017  
 3 ft contours



2017 Indiana Department of Natural Resources (IDNR)  
 (Permission is granted to reprint with credit given to IDNR)