

Oil and Gas Orphan Well program is committed to identifying and plugging orphan wells within the state to reduce the environmental impact of emissions, water contamination, and other concerns related to the lack of maintenance and oversight on historical wells. This project is one of several that is targeting clusters of such wells in close enough proximity that they can be combined into a single bid project. The scope of work includes initial site characterization, emissions quantification where leaks are present, undergrowth clearing as necessary to ensure heavy equipment (drill rigs, cement trucks, etc.) can access the well locations, excavation of a lined drainage pit for capture of fluids during plugging, and the eventual plugging activities, which include excavation to dig up casing and flowline riser to cut off 3 feet below ground level as required by state regulations.

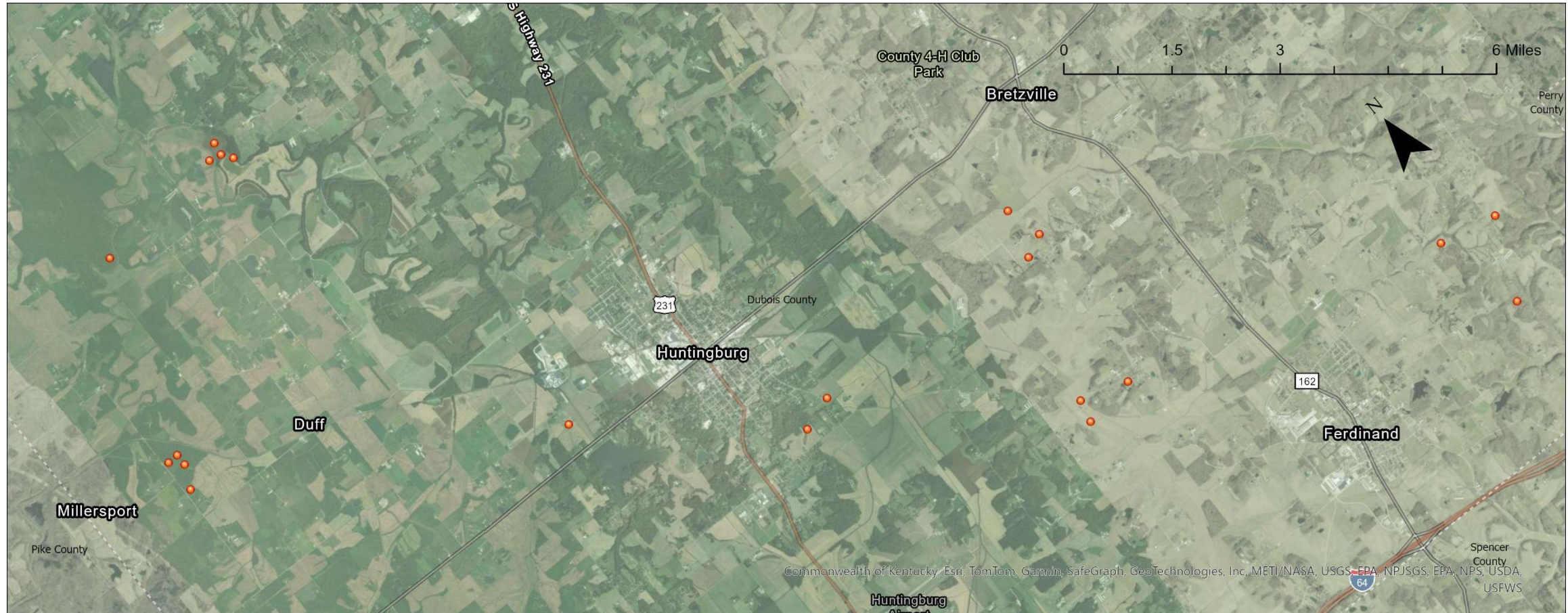
No new construction will be completed. The ground disturbance is limited to a 30-foot radius within which the drainage pit is excavated in proximity to the well. Each well has/had access roads cleared previously, though several have been poorly or not maintained. During plugging activities, 5-6 heavy trucks will be staged at or near the well location. Note: all ground disturbance activities are located where the ground has previously been disturbed during well construction.

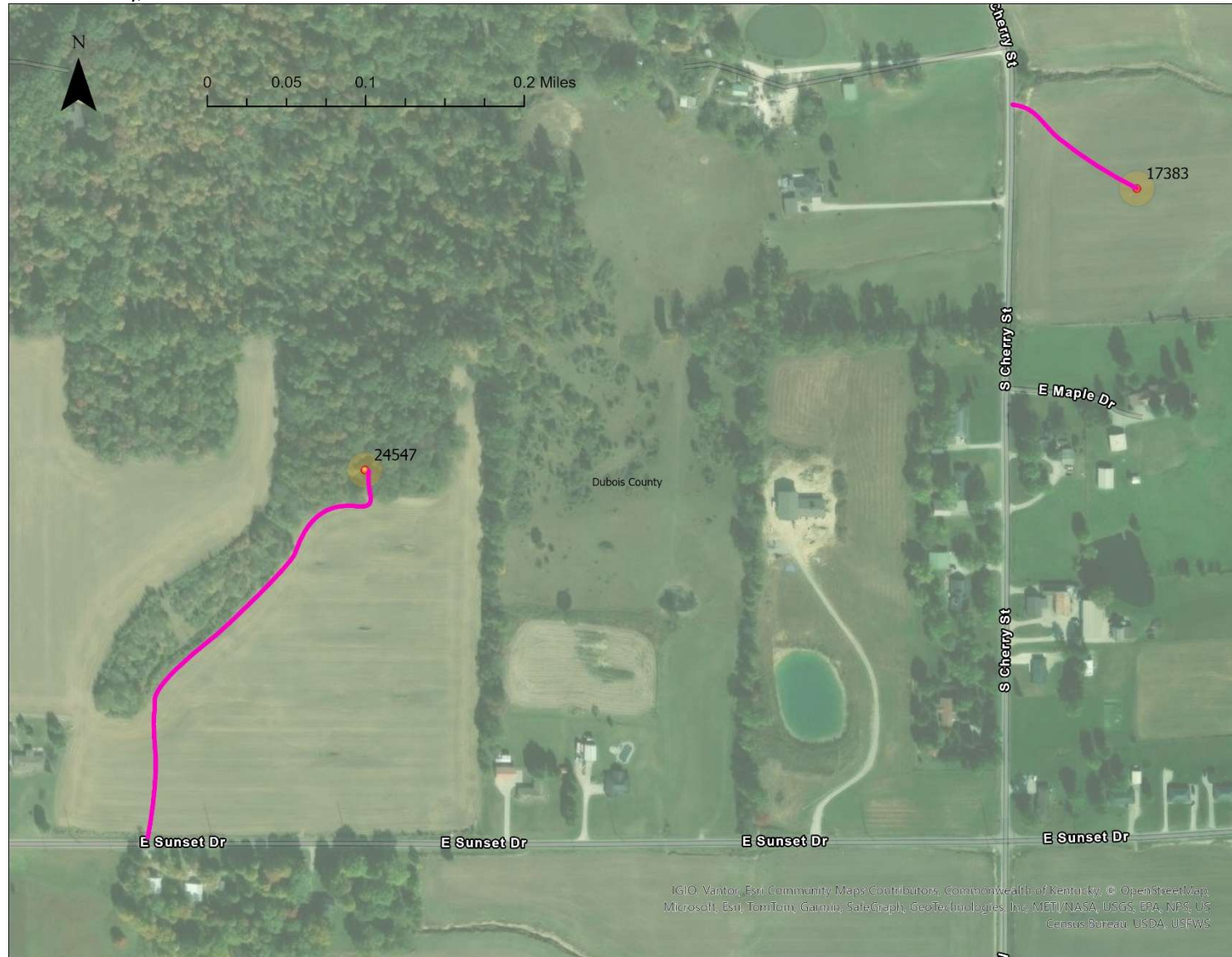
This project includes the following wells:

Permit #	IGS	Status	Type	County	Operator	Lease	Well #	Twp	T Dir	Rng	R Dir	Sect	UTMX	UTMY
17383	108141	Orphaned	N/C gas	Dubois	Allen Hasenour	Anthony Hurst	3	3	S	5	W	2	505142	4237037
21620	107763	Revoked	Oil	Dubois	Cherokee Drilling Corp.	Seng-Lange	1	2	S	6	W	2	496792	4246710
24547	108197	Orphaned	Gas	Dubois	Amelia Feldmeyer	Oscar H. Feldmeyer	1	3	S	5	W	3	504526	4236813
27235	107999	Revoked	Oil	Dubois	Matthew G Dillon	William & Mary Weyer	5	3	S	4	W	26	515702	4230909
36437	107933	Orphaned	Gas	Dubois	James & Lee Leinenbach	James & Lee Leinenbach	3	3	S	4	W	23	516327	4232323
48281	155487	Revoked	Gas	Dubois	Petro-Halogen Corp.	G. And K. Bockting	3	2	S	5	W	32	501292	4239460
49247	155529	Revoked	Gas	Dubois	Petro-Halogen Corp.	Tom Hoffman	1	3	S	4	W	18	508508	4233859
50280	155506	Revoked	Oil	Dubois	Petro-Halogen Corp.	MARTIN MOELLER	6	2	S	6	W	23	495386	4242668
50283	155495	Revoked	Oil	Dubois	Petro-Halogen Corp.	Martin Moeller	10	2	S	6	W	14	495373	4243268
50445	155493	Revoked	Oil	Dubois	Petro-Halogen Corp.	Martin & Amelia Moeller	8	2	S	6	W	14	495573	4243070
50446	155496	Revoked	Gas	Dubois	Petro-Halogen Corp.	Martin & Amelia Moeller	12	2	S	6	W	14	495577	4243279
51589	160365	Revoked	Gas	Dubois	Petro-Halogen Corp.	Hoffman	2	3	S	4	W	18	508606	4234262
51723	162366	Revoked	Gas	Dubois	Petro-Halogen Corp.	Hoffman	3	3	S	4	W	18	509464	4234009
51953	162697	Revoked	Gas	Dubois	Petro-Halogen Corp.	Allen Small	1-C	2	S	5	W	6	499222	4246968
51954	162698	Revoked	Gas	Dubois	Petro-Halogen Corp.	Dan Hoffman	1-C	2	S	5	W	6	499578	4246747
52387	163273	Revoked	Gas	Dubois	Petro-Halogen Corp.	Frances E Meyer	2-A	3	S	4	W	6	509441	4236790
48976	107722	Orphaned	Oil	Dubois	Petro Union, Inc.	ARMSTRONGS FARM	85	1	2	S	5	W	6	499444

Reference NAD83 16S

<p>Local Oil & Gas Inspector: Doug Kearby 812-459-4862 dkearby@dnr.IN.gov</p>	<p>Field Supervisor: Kevin York 812-459-4864 kyork@dnr.IN.gov</p>
---	---

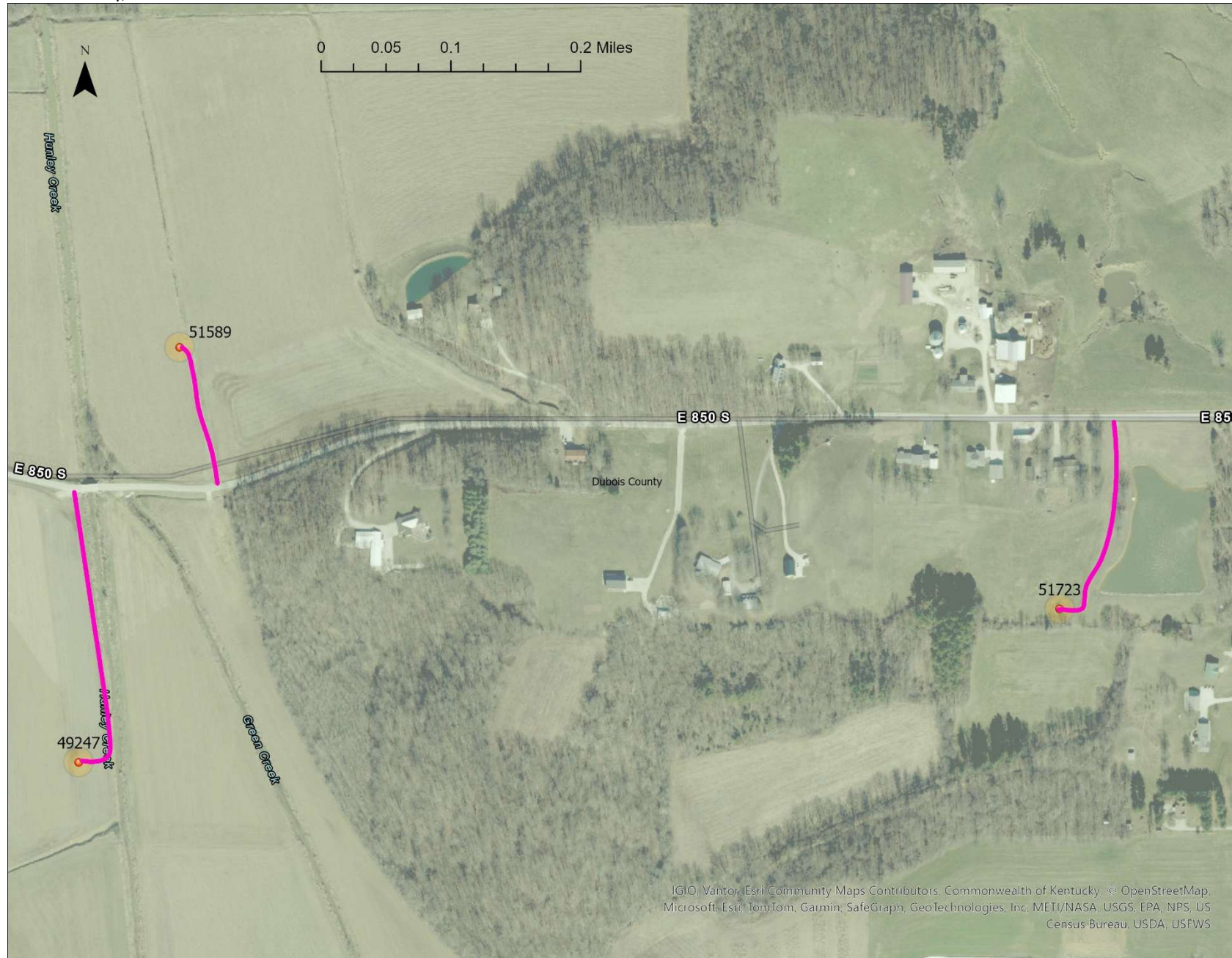






24547

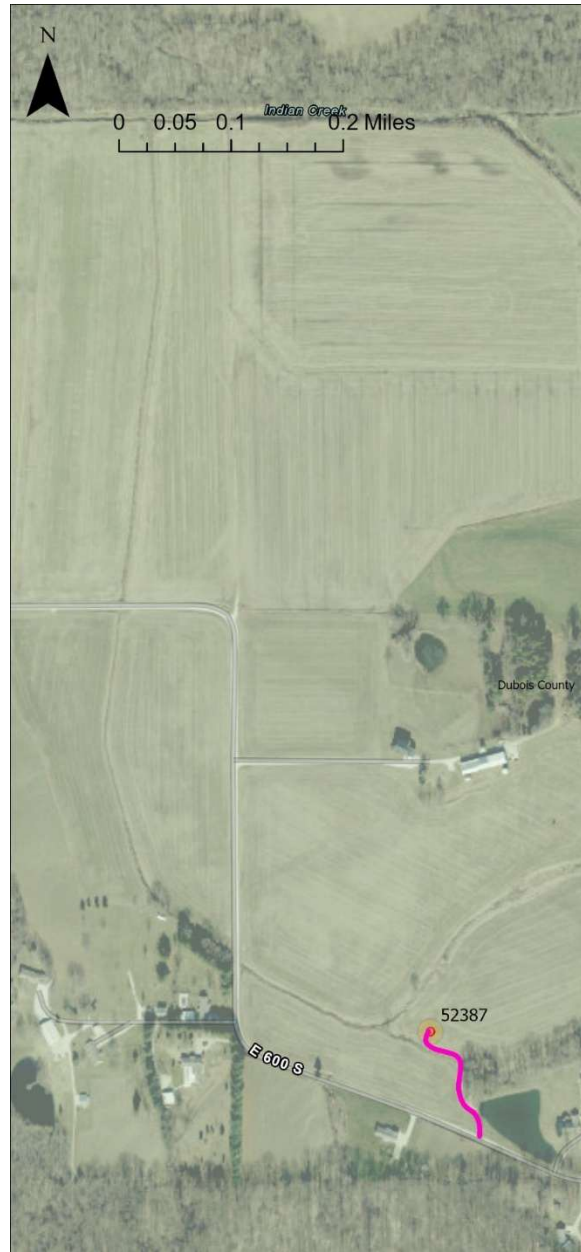


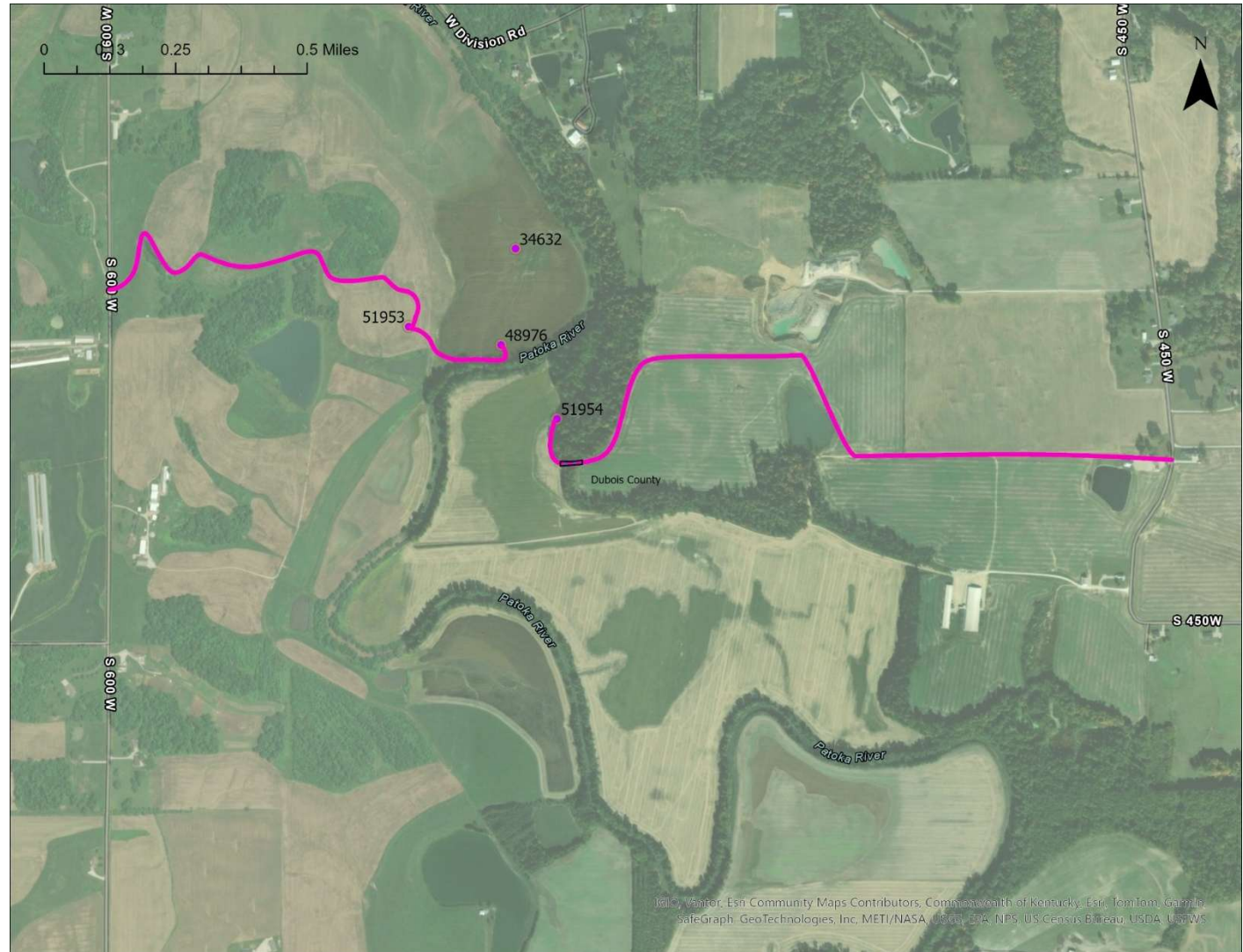




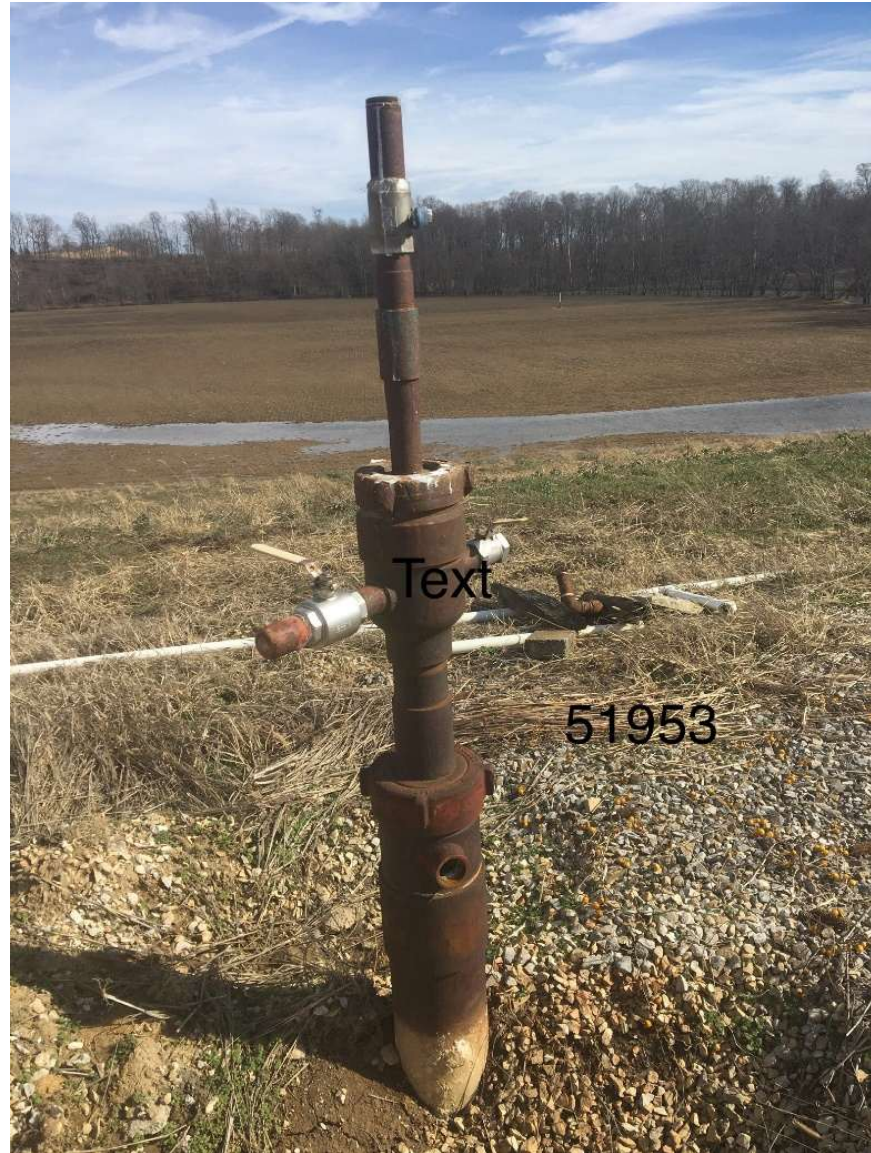
51589







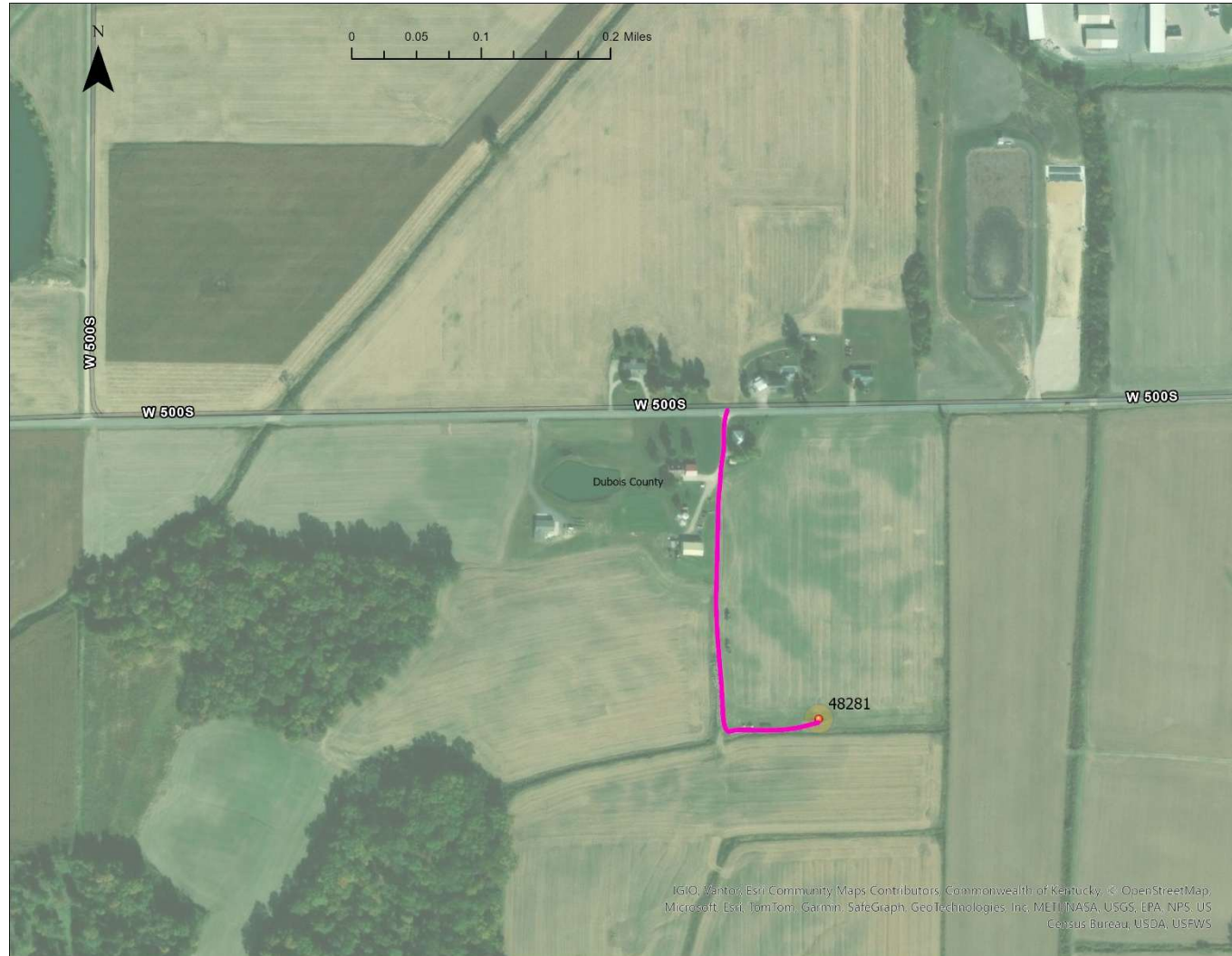




51954



48281



50446





50445





27235 no images



UNIT PRICE SHEET

The Contract is based on the following unit prices. The prices are installed, including, but not limited to labor and materials.

ITEM/Activity	BASE BID	COST/UNIT	TOTAL
Bit (including changeovers for whole project)	2	\$ /ea	\$
Rig Operation (including tubing & labor)	340	\$ /hour	\$
Rig Operation with Power Swivel (including Mud pump, tubing & labor) or Spudder	102	\$ /hour	\$
Drill collars (for whole project)	2	\$ /ea	\$
Tank Truck	120	\$ /hour	\$
Bulk Truck	85	\$ /hour	\$
Backhoe/ Mini-Excavator	102	\$ /hour	\$
Dozer/ Cat	34	\$ /hour	\$
Winch Truck	10	\$ /hour	\$
Liquid Oil Field Waste Disposal	750	\$ /bbl	\$
Cement Pump Truck & set up charge	17	\$ /well	\$
Cement	3970	\$ /sack	\$
LCM cement additive	17	\$ /sack	\$
Cal seal	17	\$ /sack	\$
Wireline Service Set-up	17	\$ /well	\$
Cement Bond Log	5	\$ /ea	\$
Perforations	17	\$ /set	\$
Extra Shots to perforate well	4	\$ /ea	\$
Dump bailer run	17	\$ /ea	\$
Mobilization	1	\$ /ea	\$
Roustabout work per person	102	\$ /hour	\$
Welder / Torch	43	\$ /hour	\$
Performance Bond	1	\$ /total	\$
Lined pit/surface pit	17	\$ /ea	\$
Cast iron bridge plug 2"	1	\$ /ea	\$
Cast iron bridge plug 4.5"	13	\$ /ea	\$
Cast iron bridge plug 5"	2	\$ /ea	\$
Cast iron bridge plug 5.5"	1	\$ /ea	\$
Land/crop damages	10	\$ /acre	\$
Rig mat/mud boat	1	\$ /day	\$

Note: Equipment should only be billed for hours actively in use with an operator.

Cost of Project not to exceed the **TOTAL LUMP SUM BID** \$ _____

Other materials, specialty rental tools, and equipment, as ordered by the division, necessary to complete the required work shall be paid at cost to the CONTRACTOR (invoice required) plus 10% (to defray transportation costs). Fair market value for equipment of value recovered must be reflected as a credit on invoice.

Price sheet terms and definitions:

- Bit– 4” or 6” drill bit as needed to drill through casing to ensure full depth of cement plug
- Rig Operation (including tubing and labor)– billable hours when rig equipment is actively being operated during plugging process. This does not include down time when repairs are required.
- Rig Operation with Power Swivel (including mud pump, tubing, and labor) or Spudder– billable hours when rig equipment with necessary power swivel attachment is actively being operated during plugging process. This does not include down time when repairs are required.
- Drill Collars (whole project)– billable charge if drill collars are required during power swivel operation
- Tank Truck– billable hours when tank truck is actively being operated during plugging process. This does not include transit time to/from site
- Bulk Truck– billable hours when bulk truck is actively being operated during plugging process. This does not include transit time to/from site
- Backhoe/Mini Excavator– billable hours when backhoe/mini excavator is actively being used by an operator during well site preparation and plugging/restoration activities
- Dozer/Cat– billable hours when dozer/cat is actively being used by an operator during well site preparation and plugging/restoration activities
- Winch Truck– billable hours when winch truck is actively being used during well site preparation and restoration. This does not include transit time to/from site.
- Liquid Oil Field Waste Disposal– this is the per-barrel cost for disposal of produced water and other fluids generated during well plugging
- Cement Pump Truck and set up charge– one set up charge allowed per well, including travel time
- Cement– per-sack cost for any cement approved to be used in oil well plugging per 312 IAC 29-33-5
- LCM Cement additive– one “lost circulation material” per bag cost
- Cal Seal– one “calcium chloride” per sack cost
- Wireline Service Set up– one setup charge allowed per well for the purpose of CIBP, CBL, and perforation activities, including travel time
- Cement Bond Log– where specified on the well plugging plan, a cement bond log will be run to determine presence/depth of cement in annular space
- Perforations– first perforation execution at required depths for applicable top/bottom plug as specified on well plugging plan
- Extra Shots to perforate well– additional perforation execution at required depths when bottom plug perforations have already been executed on the same well during plugging process, or additional top plug perforations to attain circulation on annular side of casing to surface
- Dump Bailer run– cement dump bailer load/run for depositing cement on top of CIBP
- Mobilization– one mobilization charge per project: must include expected travel time for rig, heavy trucks, support trucks, lodging/per diem allowances, and other charges related to getting personnel and

equipment into position in project area. Also includes cost of demobilization of all equipment from project area after completion.

- Roustabout work– personnel billable hours for site clearing and cleanup as needed where personnel is not billing to rig or other equipment
- Welder/Torch– billable hours for all welding and cutting work necessary to proceed with plugging activities
- Performance Bond– cost of bonding based on bid price if bid is over \$150,000
- Lined pit/surface pit– each well will require a plastic lined earthen pit or steel surface pit to collect produced fluids from plugging process
- Cast iron bridge plug– where well plugging plan indicates that the well may be flowing, a “cast iron bridge plug” or CIBP will be required at the diameter appropriate to the casing size encountered
- Land/crop damages– damages must be paid to farmer/landowner where losses to live crops may be expected due to the plugging process, includes improvements to surface by statutory requirements
- Rig mat/mud boat– where appropriate depending on the weather and site conditions, approved weight-distributing materials may be used to facilitate equipment access to/from well site
- Extra items– attach additional pages as needed to describe any equipment or materials needed for plugging activities that are not accounted for in previous line items. Please specify why these items are needed in lieu of or in addition to the previous line items. (Examples: fishing tools for 2” tubing collar, 4’ section of 4.5” casing to bring to surface)



WELL PLUGGING PLAN

State Form 54872 (R4 / 3-20) Form No. P2

INDIANA DEPARTMENT OF NATURAL RESOURCES

Division of Oil and Gas
402 West Washington Street, Room W293
Indianapolis, IN 46204
Telephone: (317) 232-4055
Internet: <http://www.in.gov/dnr/dnroil>

FOR STATE USE ONLY

Date Received (month, day, year) 2/10/2026	Initials RPF
Date Approved (month, day, year) 2/12/2026	Initials RPF
Date Denied (month, day, year)	Initials
Date Modified (month, day, year)	Initials

PART I GENERAL INFORMATION

Operator: Orphan Well Telephone Number: E-mail: orphanwells@dnr.IN.gov

Lease-Well Number: Oscar Feldmeyer #1 Well Type: Gas Permit Number: 24547

County: Dubois Scheduled plugging date: (month, day, year) Section 3 Township 3S Range 5W 1/4's

GL: 545 KB:

Surface:

Size	Length	Hole	Cement
8	95		

Long String:

Size	Length	Hole	Cement
4 1/2	938		150

Liner / Intermediate Casing:

Size	Length	Hole	Cement

Estimate top of cement (TOC): 0

Well Orientation
Vertical: Yes
Horizontal: Yes

Existing Perforations:
From 453 To 463

From To

Proposed Perforations:
From To

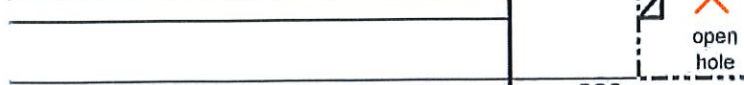
From To

From To

Proposed Casing to Pull - Amount:

Proposed cement types and volumes

Plug #1	
Cmt Type CIBP	Volume
Plug #2	
Cmt Type A	Volume 40
Plug #3	
Cmt Type	Volume
Plug #4	
Cmt Type	Volume



USDW Depth: 545
Well flowing? Yes No

Will you be disposing of NORM related waste during this plugging? Yes No
If yes, see Part III below.

Is well located in a commercially minable coal resource area? Yes No

If so, was the entity with rights to the coal rights notified? Yes No When?

Who was notified?

Comments:

Bottom plug: Set CIBP at +/-440

Top plug: Verify cement on backside, perforate as needed, Cement full 440-0

PART II AFFIRMATION

I affirm under penalty of perjury that the information provided in this plan is true and correct to the best of my knowledge and belief. Furthermore, I understand that this plan will not be valid until approved by the Division of Oil and Gas and that upon said approval, it will remain valid for a period of not more than 180 days thereafter, unless the construction of the well has changed which also voids the plan.

Signature of operator or authorized agent Date signed (month, day, year)

Cement CIBP Packer Spacer



WELL PLUGGING PLAN

State Form 54872 (R4 / 3-20) Form No. P2

INDIANA DEPARTMENT OF NATURAL RESOURCES

Division of Oil and Gas
402 West Washington Street, Room W293
Indianapolis, IN 46204
Telephone: (317) 232-4055
Internet: <http://www.in.gov/dnr/dnroil>

FOR STATE USE ONLY

Date Received (month, day, year)	Initials
2/10/2026	RPG
Date Approved (month, day, year)	Initials
2/11/2026	RPG
Date Denied (month, day, year)	Initials
Date Modified (month, day, year)	Initials

PART I GENERAL INFORMATION

Operator: Orphan Well Telephone Number: E-mail: orphanwells@dnr.IN.gov

Lease-Well Number: Armstrong Farms #1 Well Type: Oil Permit Number: 48976

County: Dubois Scheduled plugging date: (month, day, year) Section 6 Township 2S Range 5W 1/4's

Surface:

Size	Length	Hole	Cement
8 5/8	60		40

Long String:

Size	Length	Hole	Cement
4 1/2	1460		175

Liner / Intermediate Casing:

Size	Length	Hole	Cement

Estimate top of cement (TOC): 830

Well Orientation: Vertical: Yes Horizontal: Yes

Existing Perforations:

From To

From To

From To

Proposed Perforations:

From⁵³⁰ To⁰

From To

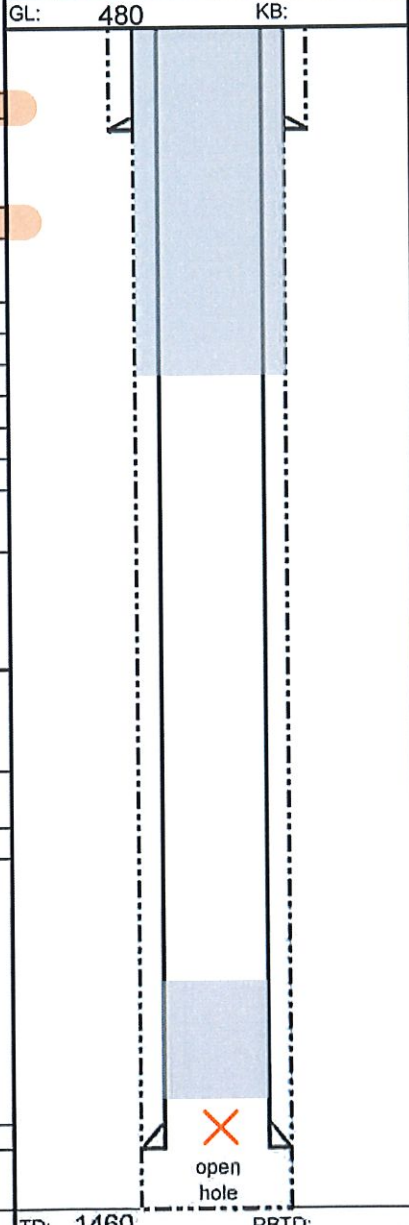
From To

Proposed Casing to Pull - Amount:

Proposed cement types and volumes

Plug #1	Cmt Type	Volume
	CIBP	1sx
Plug #2	Cmt Type	Volume
	A	175
Plug #3	Cmt Type	Volume
Plug #4	Cmt Type	Volume

TD: 1460 PBD: open hole



USDW Depth: 480

Well flowing? Yes No

Will you be disposing of NORM related waste during this plugging? Yes No

If yes, see Part III below.

Is well located in a commercially minable coal resource area? Yes No

If so, was the entity with rights to the coal rights notified? Yes When?

Who was notified?

Comments:

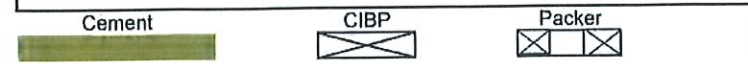
Bottom plug: Set CIBP at +/-1440 w/1 sx of cement

Top plug: Bond log to verify cement on backside, perforate as needed, circulate full 530-0

PART II AFFIRMATION

I affirm under penalty of perjury that the information provided in this plan is true and correct to the best of my knowledge and belief. Furthermore, I understand that this plan will not be valid until approved by the Division of Oil and Gas and that upon said approval, it will remain valid for a period of not more than 180 days thereafter, unless the construction of the well has changed which also voids the plan.

Signature of operator or authorized agent Date signed (month, day, year)





WELL PLUGGING PLAN

State Form 54872 (R4 / 3-20) Form No. P2

INDIANA DEPARTMENT OF NATURAL RESOURCES

Division of Oil and Gas
402 West Washington Street, Room W293
Indianapolis, IN 46204
Telephone: (317) 232-4055
Internet: <http://www.in.gov/dnr/dnroil>

FOR STATE USE ONLY

Date Received (month, day, year)	Initials
2/10/2026	KPJ
Date Approved (month, day, year)	Initials
2/11/2026	KPJ
Date Denied (month, day, year)	Initials
Date Modified (month, day, year)	Initials

PART I GENERAL INFORMATION

Operator: Orphan Well		Telephone Number:	E-mail: orphanwells@dnr.IN.gov	
Lease-Well Number: Martin & Amelia Moeller #8		Well Type: Oil		Permit Number: 50445
County: Dubois	Scheduled plugging date: (month, day, year)		Section 14	Township 2S
			Range 6W	1/4's

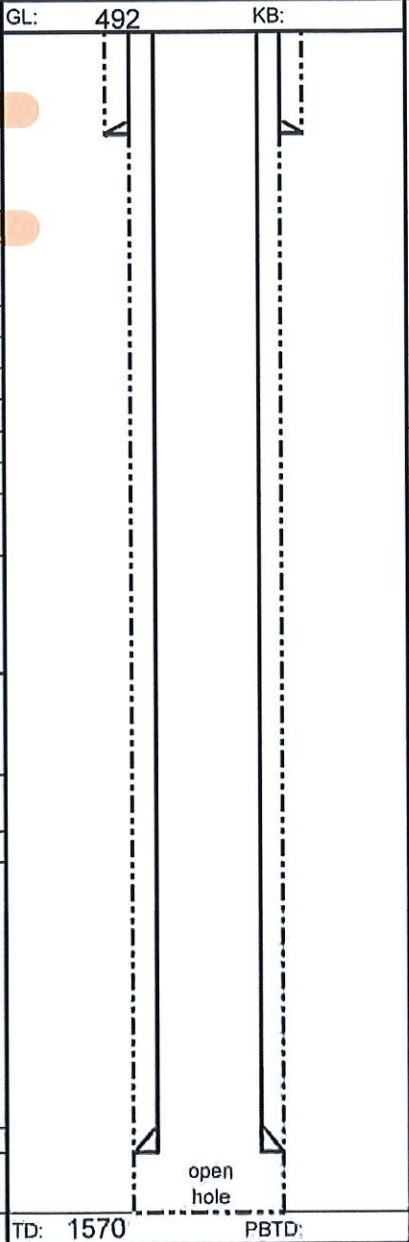
Surface:			
Size	Length	Hole	Cement
8 5/8	35		66cf
Long String:			
Size	Length	Hole	Cement
4 1/2	1570		462cf
Liner / Intermediate Casing:			
Size	Length	Hole	Cement

Estimate top of cement (TOC): 0

Well Orientation: Vertical: Yes
Horizontal: Yes

Existing Perforations:	
From 1560	To 1564
From	To
From	To
Proposed Perforations:	
From	To
From	To
From	To
Proposed Casing to Pull - Amount:	

Proposed cement types and volumes	
Plug #1	
Cmt Type CIBP	Volume 1sx
Plug #2	
Cmt Type A	Volume 45
Plug #3	
Cmt Type	Volume
Plug #4	
Cmt Type	Volume



USDW Depth: 492
Well flowing? Yes No

Will you be disposing of NORM related waste during this plugging? Yes No
If yes, see Part III below.

Is well located in a commercially minable coal resource area? Yes No
If so, was the entity with rights to the coal rights notified? Yes No When?

Who was notified?

Comments:

Bottom plug: Set CIBP at +/-1550 w/ ~~16xx~~ cement 1550'-794'

Top plug: verify cement on backside, perforate as needed, circulate full 550-0

PART II AFFIRMATION

I affirm under penalty of perjury that the information provided in this plan is true and correct to the best of my knowledge and belief. Furthermore, I understand that this plan will not be valid until approved by the Division of Oil and Gas and that upon said approval, it will remain valid for a period of not more than 180 days thereafter, unless the construction of the well has changed which also voids the plan.

Signature of operator or authorized agent _____ Date signed (month, day, year) _____





WELL PLUGGING PLAN

State Form 54872 (R4 / 3-20) Form No. P2

INDIANA DEPARTMENT OF NATURAL RESOURCES

Division of Oil and Gas
402 West Washington Street, Room W293
Indianapolis, IN 46204
Telephone: (317) 232-4055
Internet: <http://www.in.gov/dnr/dnroil>

FOR STATE USE ONLY

Date Received (month, day, year)	Initials
2/10/2026	KPCJ
Date Approved (month, day, year)	Initials
2/12/2026	KPCJ
Date Denied (month, day, year)	Initials
Date Modified (month, day, year)	Initials

PART I GENERAL INFORMATION

Operator: Orphan Well		Telephone Number:	E-mail: orphanwells@dnr.IN.gov	
Lease-Well Number: Allen Small #1-C		Well Type: Gas		Permit Number: 51953
County: Dubois	Scheduled plugging date: (month, day, year)		Section 6	Township 2S
			Range 5W	1/4's

Surface:

Size	Length	Hole	Cement
7	75		100

Long String:

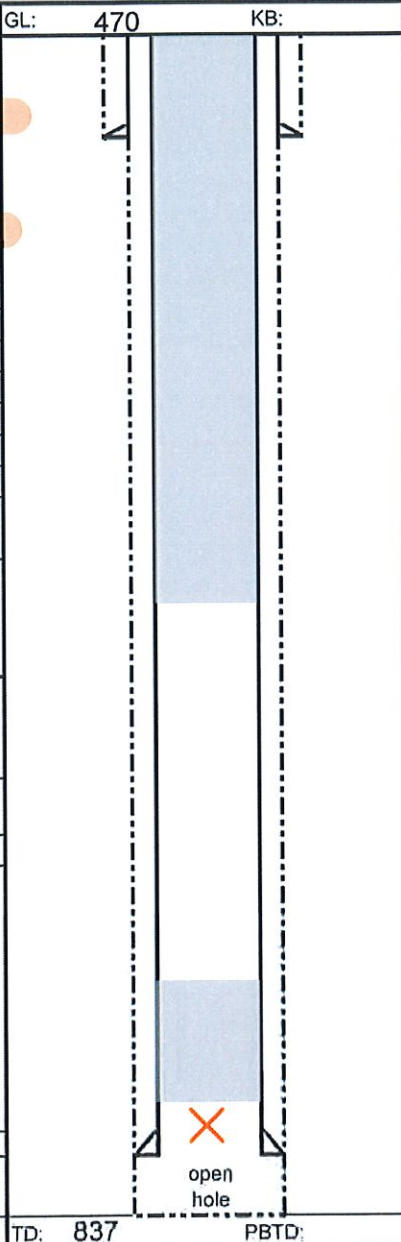
Size	Length	Hole	Cement
4 1/2	827		185

Liner / Intermediate Casing:

Size	Length	Hole	Cement

Estimate top of cement (TOC): 0

Well Orientation: Vertical: Yes
Horizontal: Yes



USDW Depth: 470
Well flowing? Yes No

Will you be disposing of NORM related waste during this plugging? Yes No
If yes, see Part III below.

Is well located in a commercially minable coal resource area? Yes No
If so, was the entity with rights to the coal rights notified? Yes No When?
Who was notified?

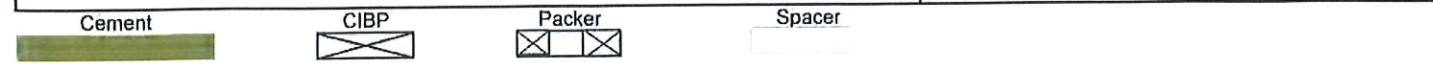
Comments:
Tab CIBP at 738' and place 1sx cement, If not there:
Bottom plug: Set CIBP at +/-750 w/1sx of cement

Top plug: verify cement on backside, perforate as needed, circulate full 520-0

PART II AFFIRMATION

I affirm under penalty of perjury that the information provided in this plan is true and correct to the best of my knowledge and belief. Furthermore, I understand that this plan will not be valid until approved by the Division of Oil and Gas and that upon said approval, it will remain valid for a period of not more than 180 days thereafter, unless the construction of the well has changed which also voids the plan.

Signature of operator or authorized agent _____ Date signed (month, day, year) _____





WELL PLUGGING PLAN

State Form 54872 (R4 / 3-20) Form No. P2

INDIANA DEPARTMENT OF NATURAL RESOURCES
Division of Oil and Gas
402 West Washington Street, Room W293
Indianapolis, IN 46204
Telephone: (317) 232-4055
Internet: <http://www.in.gov/dnr/dnroil>

FOR STATE USE ONLY

Date Received (month, day, year)	Initials
2/10/2026	KPCJ
Date Approved (month, day, year)	Initials
2/12/2026	KPCJ
Date Denied (month, day, year)	Initials
Date Modified (month, day, year)	Initials

PART I GENERAL INFORMATION

Operator: Orphan Well		Telephone Number:	E-mail: orphanwells@dnr.IN.gov	
Lease-Well Number: Seng-Lange #1		Well Type: Oil		Permit Number: 21620
County: Dubois	Scheduled plugging date: (month, day, year)		Section 2	Township 2S
			Range 6W	1/4's

Surface:

Size	Length	Hole	Cement
8	374		

Long String:

Size	Length	Hole	Cement
5	936		60

Liner / Intermediate Casing:

Size	Length	Hole	Cement

Estimate top of cement (TOC): 700

Well Orientation: Vertical: Yes
Horizontal: Yes

Existing Perforations:

From	To
From	To
From	To

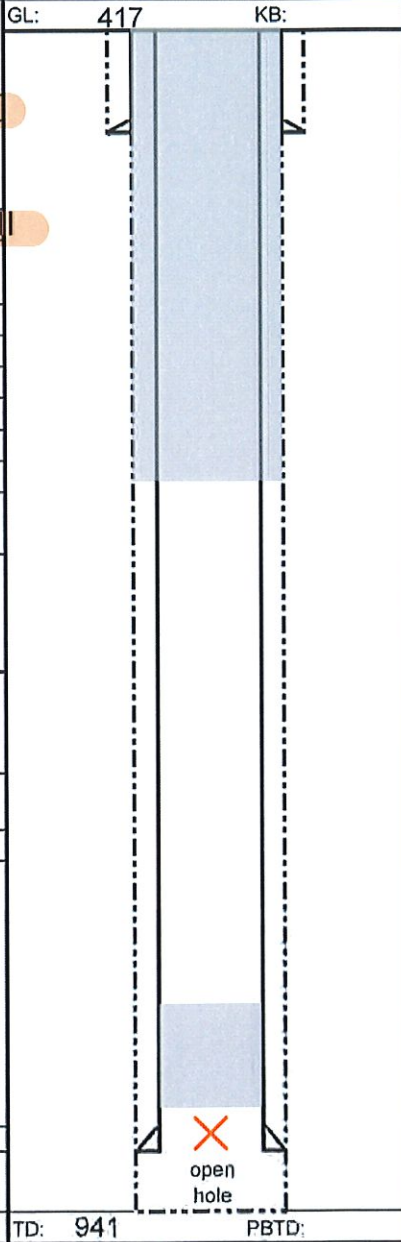
Proposed Perforations:

From ⁴⁶⁷	To ⁷⁶⁶
From	To
From	To

Proposed Casing to Pull - Amount:

Proposed cement types and volumes

Plug #1	Cmt Type CIBP	Volume 1.5sx
Plug #2	Cmt Type A	Volume 175
Plug #3	Cmt Type	Volume
Plug #4	Cmt Type	Volume



USDW Depth: 417
Well flowing? Yes No

Will you be disposing of NORM related waste during this plugging? Yes No
If yes, see Part III below.

Is well located in a commercially minable coal resource area? Yes No
If so, was the entity with rights to the coal rights notified? Yes No When?

Who was notified?

Comments:

Bottom plug: Set CIBP at +/-916 w/1.5 sx of cement

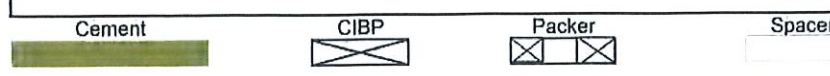
Top plug: perforate as needed, circulate full 467-0

Note: well has not been located, uncertain whether leaking

PART II AFFIRMATION

I affirm under penalty of perjury that the information provided in this plan is true and correct to the best of my knowledge and belief. Furthermore, I understand that this plan will not be valid until approved by the Division of Oil and Gas and that upon said approval, it will remain valid for a period of not more than 180 days thereafter, unless the construction of the well has changed which also voids the plan.

Signature of operator or authorized agent _____ Date signed (month, day, year) _____





WELL PLUGGING PLAN

State Form 54872 (R4 / 3-20) Form No. P2

INDIANA DEPARTMENT OF NATURAL RESOURCES

Division of Oil and Gas
402 West Washington Street, Room W293
Indianapolis, IN 46204
Telephone: (317) 232-4055
Internet: <http://www.in.gov/dnr/dnroil>

FOR STATE USE ONLY

Date Received (month, day, year)	Initials
2/10/2026	KPJ
Date Approved (month, day, year)	Initials
2/12/2026	KPJ
Date Denied (month, day, year)	Initials
Date Modified (month, day, year)	Initials

PART I GENERAL INFORMATION

Operator: Orphan Well		Telephone Number:	E-mail: orphanwells@dnr.IN.gov	
Lease-Well Number: William B & Mary Elizabeth Weyer #5		Well Type: Oil		Permit Number: 27235
County: Dubois	Scheduled plugging date: (month, day, year)		Section 26	Township 3S
			Range 4W	1/4's

<p>Surface:</p> <table border="1"> <thead> <tr> <th>Size</th> <th>Length</th> <th>Hole</th> <th>Cement</th> </tr> </thead> <tbody> <tr> <td></td> <td></td> <td></td> <td></td> </tr> </tbody> </table> <p>Long String:</p> <table border="1"> <thead> <tr> <th>Size</th> <th>Length</th> <th>Hole</th> <th>Cement</th> </tr> </thead> <tbody> <tr> <td>4.5</td> <td>346</td> <td></td> <td>25</td> </tr> </tbody> </table> <p>Liner / Intermediate Casing:</p> <table border="1"> <thead> <tr> <th>Size</th> <th>Length</th> <th>Hole</th> <th>Cement</th> </tr> </thead> <tbody> <tr> <td></td> <td></td> <td></td> <td></td> </tr> </tbody> </table> <p>Estimate top of cement (TOC): 176</p> <p>Well Orientation: Vertical: <input checked="" type="checkbox"/> Yes Horizontal: <input type="checkbox"/> Yes</p> <p>Existing Perforations:</p> <table border="1"> <tr> <td>From 348</td> <td>To 357</td> </tr> <tr> <td>From</td> <td>To</td> </tr> <tr> <td>From</td> <td>To</td> </tr> </table> <p>Proposed Perforations:</p> <table border="1"> <tr> <td>From 170</td> <td>To 169</td> </tr> <tr> <td>From</td> <td>To</td> </tr> <tr> <td>From</td> <td>To</td> </tr> </table> <p>Proposed Casing to Pull - Amount:</p> <p>Proposed cement types and volumes</p> <table border="1"> <tr> <td>Plug #1</td> <td></td> </tr> <tr> <td>Cmt Type CIBP</td> <td>Volume</td> </tr> <tr> <td>Plug #2</td> <td></td> </tr> <tr> <td>Cmt Type A</td> <td>Volume 120</td> </tr> <tr> <td>Plug #3</td> <td></td> </tr> <tr> <td>Cmt Type</td> <td>Volume</td> </tr> <tr> <td>Plug #4</td> <td></td> </tr> <tr> <td>Cmt Type</td> <td>Volume</td> </tr> </table>	Size	Length	Hole	Cement					Size	Length	Hole	Cement	4.5	346		25	Size	Length	Hole	Cement					From 348	To 357	From	To	From	To	From 170	To 169	From	To	From	To	Plug #1		Cmt Type CIBP	Volume	Plug #2		Cmt Type A	Volume 120	Plug #3		Cmt Type	Volume	Plug #4		Cmt Type	Volume	<p>GL: 526 KB:</p> <p>TD: 400 PBD:</p>	<p>USDW Depth: 526</p> <p>Well flowing? <input type="checkbox"/> Yes <input type="checkbox"/> No</p> <p>Will you be disposing of NORM related waste during this plugging? <input type="checkbox"/> Yes <input checked="" type="checkbox"/> No If yes, see Part III below.</p> <p>Is well located in a commercially minable coal resource area? <input type="checkbox"/> Yes <input checked="" type="checkbox"/> No If so, was the entity with rights to the coal rights notified? <input type="checkbox"/> Yes <input type="checkbox"/> No When?</p> <p>Who was notified?</p> <p>Comments:</p> <p>Perforate as needed, circulate full 340-0</p> <p>If well found leaking, CIBP at 340, solid fill from 340-0</p> <p>Note: well has not been located, uncertain whether leaking</p>
Size	Length	Hole	Cement																																																			
Size	Length	Hole	Cement																																																			
4.5	346		25																																																			
Size	Length	Hole	Cement																																																			
From 348	To 357																																																					
From	To																																																					
From	To																																																					
From 170	To 169																																																					
From	To																																																					
From	To																																																					
Plug #1																																																						
Cmt Type CIBP	Volume																																																					
Plug #2																																																						
Cmt Type A	Volume 120																																																					
Plug #3																																																						
Cmt Type	Volume																																																					
Plug #4																																																						
Cmt Type	Volume																																																					

PART II AFFIRMATION

I affirm under penalty of perjury that the information provided in this plan is true and correct to the best of my knowledge and belief. Furthermore, I understand that this plan will not be valid until approved by the Division of Oil and Gas and that upon said approval, it will remain valid for a period of not more than 180 days thereafter, unless the construction of the well has changed which also voids the plan.

Signature of operator or authorized agent	Date signed (month, day, year)
---	--------------------------------

Cement	CIBP	Packer	Spacer



WELL PLUGGING PLAN

State Form 54872 (R4 / 3-20) Form No. P2

INDIANA DEPARTMENT OF NATURAL RESOURCES

Division of Oil and Gas
402 West Washington Street, Room W293
Indianapolis, IN 46204
Telephone: (317) 232-4055
Internet: <http://www.in.gov/dnr/dnroil>

FOR STATE USE ONLY

Date Received (month, day, year)	Initials
2/10/2026	KPCJ
Date Approved (month, day, year)	Initials
2/12/2026	KPCJ
Date Denied (month, day, year)	Initials
Date Modified (month, day, year)	Initials

PART I GENERAL INFORMATION

Operator: Orphan Well		Telephone Number:	E-mail: orphanwells@dnr.IN.gov
Lease-Well Number: Tom Hoffman #1		Well Type: Gas	Permit Number: 49247
County: Dubois	Scheduled plugging date: (month, day, year)	Section: 18	Township: 3S Range: 4W 1/4's:

Surface:

Size	Length	Hole	Cement
8 5/8	69		65 sx

Long String:

Size	Length	Hole	Cement
4 1/2	1640	7 7/8	46sx

Liner / Intermediate Casing:

Size	Length	Hole	Cement

Estimate top of cement (TOC): ? 1426 calc, exp circ

Well Orientation

Vertical: Yes
Horizontal: Yes

Existing Perforations:

From 1526	To 1533
From 1519	To 1522
From 1497	To 1500

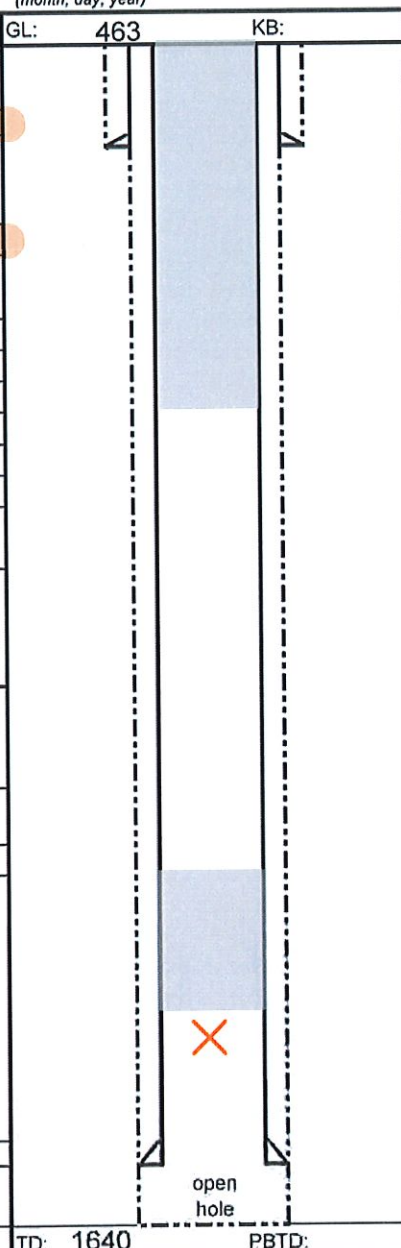
Proposed Perforations:

From	To
From	To
From	To

Proposed Casing to Pull - Amount:

Proposed cement types and volumes

Plug #1	Cmt Type CIBP	Volume 1sx
Plug #2	Cmt Type A	Volume +/-40
Plug #3	Cmt Type	Volume
Plug #4	Cmt Type	Volume



USDW Depth: 463

Well flowing? Yes No

Will you be disposing of NORM related waste during this plugging? Yes No
If yes, see Part III below.

Is well located in a commercially minable coal resource area? Yes No
If so, was the entity with rights to the coal rights notified? Yes No
When? _____
Who was notified? _____

Comments:

Bottom plug: Already have CIBP set at 1285 for plug back. If flowing, set CIBP at 1240' w/1sx
If not flowing, cement 1285'-1004'

Top plug: verify cement on backside, perforate as needed, circulate full 513-0

Note from previously approved WPP: Cement top calculates to be below the last perforation which could be causing the issue, but the cement is written to be circulated on the well diagram page of the completion report. If this is found to be the case then well should be bullheaded from 1260 to surface.

PART II AFFIRMATION

I affirm under penalty of perjury that the information provided in this plan is true and correct to the best of my knowledge and belief. Furthermore, I understand that this plan will not be valid until approved by the Division of Oil and Gas and that upon said approval, it will remain valid for a period of not more than 180 days thereafter, unless the construction of the well has changed which also voids the plan.

Signature of operator or authorized agent _____ Date signed (month, day, year) _____

Cement CIBP Packer Spacer



WELL PLUGGING PLAN

State Form 54872 (R4 / 3-20) Form No. P2

INDIANA DEPARTMENT OF NATURAL RESOURCES

Division of Oil and Gas
402 West Washington Street, Room W293
Indianapolis, IN 46204
Telephone: (317) 232-4055
Internet: <http://www.in.gov/dnr/dnroil>

FOR STATE USE ONLY

Date Received (month, day, year) 2/10/2026	Initials KPG
Date Approved (month, day, year) 2/12/2026	Initials KPG
Date Denied (month, day, year)	Initials
Date Modified (month, day, year)	Initials

PART I GENERAL INFORMATION

Operator: Orphan Well Telephone Number: E-mail: orphanwells@dnr.IN.gov

Lease-Well Number: Martin & Amelia Moeller #12 Well Type: Gas Permit Number: 50446

County: Dubois Scheduled plugging date: (month, day, year) Section 14 Township 2S Range 6W 1/4's

<p>Surface:</p> <table border="1"> <thead> <tr> <th>Size</th> <th>Length</th> <th>Hole</th> <th>Cement</th> </tr> </thead> <tbody> <tr> <td>8 5/8</td> <td>35</td> <td>11</td> <td>66cf</td> </tr> </tbody> </table> <p>Long String:</p> <table border="1"> <thead> <tr> <th>Size</th> <th>Length</th> <th>Hole</th> <th>Cement</th> </tr> </thead> <tbody> <tr> <td>4 1/2</td> <td>1618</td> <td>7 7/8</td> <td>495cf</td> </tr> </tbody> </table> <p>Liner / Intermediate Casing:</p> <table border="1"> <thead> <tr> <th>Size</th> <th>Length</th> <th>Hole</th> <th>Cement</th> </tr> </thead> <tbody> <tr> <td></td> <td></td> <td></td> <td></td> </tr> </tbody> </table> <p>Estimate top of cement (TOC): 0</p> <p>Well Orientation: Vertical: <input checked="" type="checkbox"/> Yes Horizontal: <input type="checkbox"/> Yes</p> <p>Existing Perforations:</p> <table border="1"> <thead> <tr> <th>From</th> <th>To</th> </tr> </thead> <tbody> <tr> <td>1599</td> <td>1603</td> </tr> <tr> <td></td> <td></td> </tr> <tr> <td></td> <td></td> </tr> </tbody> </table> <p>Proposed Perforations:</p> <table border="1"> <thead> <tr> <th>From</th> <th>To</th> </tr> </thead> <tbody> <tr> <td></td> <td></td> </tr> <tr> <td></td> <td></td> </tr> <tr> <td></td> <td></td> </tr> </tbody> </table> <p>Proposed Casing to Pull - Amount:</p> <p>Proposed cement types and volumes</p> <table border="1"> <thead> <tr> <th>Plug #</th> <th>Cmt Type</th> <th>Volume</th> </tr> </thead> <tbody> <tr> <td>1</td> <td>CIBP</td> <td>1sx</td> </tr> <tr> <td>2</td> <td>A</td> <td>45</td> </tr> <tr> <td>3</td> <td></td> <td></td> </tr> <tr> <td>4</td> <td></td> <td></td> </tr> </tbody> </table>	Size	Length	Hole	Cement	8 5/8	35	11	66cf	Size	Length	Hole	Cement	4 1/2	1618	7 7/8	495cf	Size	Length	Hole	Cement					From	To	1599	1603					From	To							Plug #	Cmt Type	Volume	1	CIBP	1sx	2	A	45	3			4			<p>GL: 543 KB:</p> <p>TD: 1618 PBTD:</p>	<p>USDW Depth: 543</p> <p>Well flowing? <input checked="" type="checkbox"/> Yes <input type="checkbox"/> No</p> <p>Will you be disposing of NORM related waste during this plugging? <input type="checkbox"/> Yes <input checked="" type="checkbox"/> No <i>If yes, see Part III below.</i></p> <p>Is well located in a commercially minable coal resource area? <input type="checkbox"/> Yes <input checked="" type="checkbox"/> No</p> <p>If so, was the entity with rights to the coal rights notified? <input type="checkbox"/> Yes <input type="checkbox"/> No When?</p> <p>Who was notified?</p> <p>Comments:</p> <p>Bottom plug: Set CIBP at +/-1598 w/1sx of cement</p> <p>Top plug: verify cement on backside, perforate as needed, circulate full 593-0</p>
Size	Length	Hole	Cement																																																						
8 5/8	35	11	66cf																																																						
Size	Length	Hole	Cement																																																						
4 1/2	1618	7 7/8	495cf																																																						
Size	Length	Hole	Cement																																																						
From	To																																																								
1599	1603																																																								
From	To																																																								
Plug #	Cmt Type	Volume																																																							
1	CIBP	1sx																																																							
2	A	45																																																							
3																																																									
4																																																									

PART II AFFIRMATION

I affirm under penalty of perjury that the information provided in this plan is true and correct to the best of my knowledge and belief. Furthermore, I understand that this plan will not be valid until approved by the Division of Oil and Gas and that upon said approval, it will remain valid for a period of not more than 180 days thereafter, unless the construction of the well has changed which also voids the plan.

Signature of operator or authorized agent Date signed (month, day, year)

Cement CIBP Packer Spacer



WELL PLUGGING PLAN

State Form 54872 (R4 / 3-20) Form No. P2

INDIANA DEPARTMENT OF NATURAL RESOURCES

Division of Oil and Gas
402 West Washington Street, Room W293
Indianapolis, IN 46204
Telephone: (317) 232-4055
Internet: <http://www.in.gov/dnr/dnroil>

FOR STATE USE ONLY

Date Received (month, day, year)	2/10/226	Initials	KPJ
Date Approved (month, day, year)	2/12/2026	Initials	KPJ
Date Denied (month, day, year)		Initials	
Date Modified (month, day, year)		Initials	

PART I GENERAL INFORMATION

Operator: Orphan Well		Telephone Number:	E-mail: orphanwells@dnr.IN.gov	
Lease-Well Number: Dan Hoffman #1-C		Well Type: Gas		Permit Number: 51954
County: Dubois	Scheduled plugging date: (month, day, year)		Section 6	Township 2S
			Range 5W	1/4's

Surface:

Size	Length	Hole	Cement
8 5/8	40	12 1/4	50

Long String:

Size	Length	Hole	Cement
4 1/2	699	6 1/2	200

Liner / Intermediate Casing:

Size	Length	Hole	Cement

Estimate top of cement (TOC): 0

Well Orientation

Vertical: Yes
Horizontal: Yes

Existing Perforations:

From 630 To 634

From To

From To

Proposed Perforations:

From To

From To

From To

Proposed Casing to Pull - Amount:

Proposed cement types and volumes

Plug #1

Cmt Type CIBP Volume 1sx

Plug #2

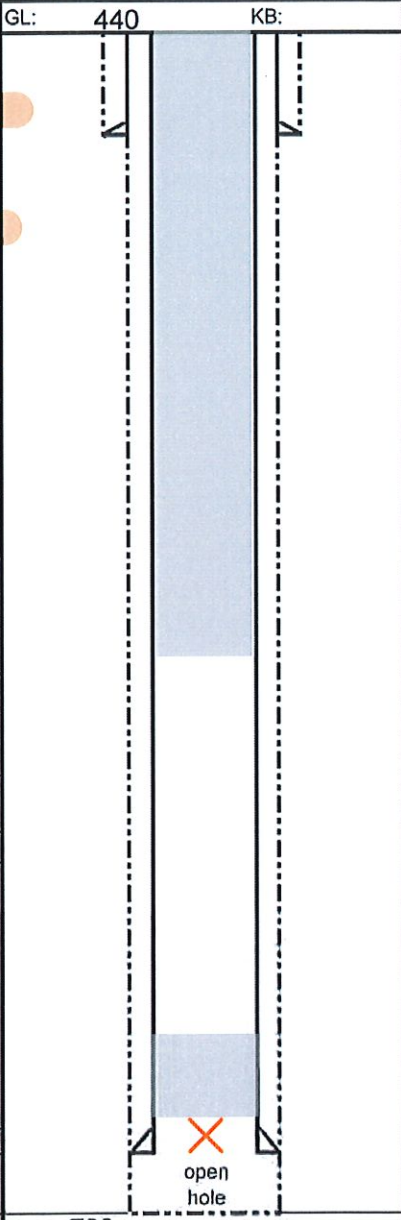
Cmt Type A Volume +/-35

Plug #3

Cmt Type Volume

Plug #4

Cmt Type Volume



USDW Depth: 440

Well flowing? Yes No

Will you be disposing of NORM related waste during this plugging? Yes No
If yes, see Part III below.

Is well located in a commercially minable coal resource area? Yes No

If so, was the entity with rights to the coal rights notified? Yes When? Who was notified?

Comments:

Bottom plug: Set CIBP at +/-615 w/1sx of cement

Top plug: verify cement on backside, perforate as needed, circulate full 490-0

PART II AFFIRMATION

I affirm under penalty of perjury that the information provided in this plan is true and correct to the best of my knowledge and belief. Furthermore, I understand that this plan will not be valid until approved by the Division of Oil and Gas and that upon said approval, it will remain valid for a period of not more than 180 days thereafter, unless the construction of the well has changed which also voids the plan.

Signature of operator or authorized agent	Date signed (month, day, year)
---	--------------------------------





WELL PLUGGING PLAN

State Form 54872 (R4 / 3-20) Form No. P2

INDIANA DEPARTMENT OF NATURAL RESOURCES

Division of Oil and Gas
402 West Washington Street, Room W293
Indianapolis, IN 46204
Telephone: (317) 232-4055
Internet: <http://www.in.gov/dnr/dnroil>

FOR STATE USE ONLY

Date Received (month, day, year)	Initials
2/10/2026	KPCJ
Date Approved (month, day, year)	Initials
2/12/2026	KPCJ
Date Denied (month, day, year)	Initials
Date Modified (month, day, year)	Initials

PART I GENERAL INFORMATION

Operator: Orphan Well		Telephone Number:	E-mail: orphanwells@dnr.IN.gov	
Lease-Well Number: James & Lee Leinenbach #3		Well Type: Gas		Permit Number: 36437
County: Dubois	Scheduled plugging date: (month, day, year)		Section 23	Township 3S
			Range 4W	1/4's

Surface:

Size	Length	Hole	Cement

Long String:

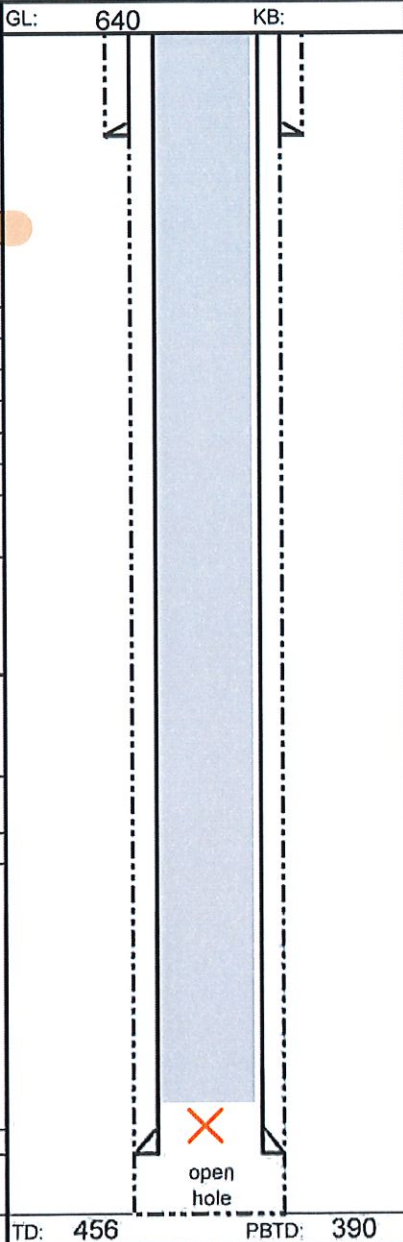
Size	Length	Hole	Cement
2	390		5

Liner / Intermediate Casing:

Size	Length	Hole	Cement

Estimate top of cement (TOC): 368

Well Orientation: Vertical: Yes
Horizontal: Yes



USDW Depth: 640
Well flowing? Yes No

Will you be disposing of NORM related waste during this plugging? Yes No
If yes, see Part III below.

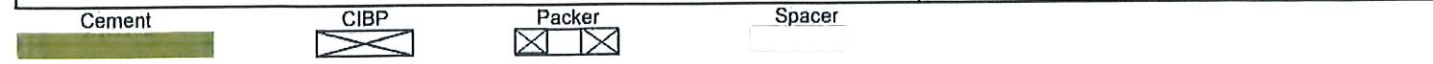
Is well located in a commercially minable coal resource area? Yes No
If so, was the entity with rights to the coal rights notified? Yes No When?
Who was notified?

Comments:
Set CIBP at 380'
Perforate as needed, circulate full 380-0

PART II AFFIRMATION

I affirm under penalty of perjury that the information provided in this plan is true and correct to the best of my knowledge and belief. Furthermore, I understand that this plan will not be valid until approved by the Division of Oil and Gas and that upon said approval, it will remain valid for a period of not more than 180 days thereafter, unless the construction of the well has changed which also voids the plan.

Signature of operator or authorized agent _____ Date signed (month, day, year) _____





WELL PLUGGING PLAN

State Form 54872 (R4 / 3-20) Form No. P2

INDIANA DEPARTMENT OF NATURAL RESOURCES
Division of Oil and Gas
402 West Washington Street, Room W293
Indianapolis, IN 46204
Telephone: (317) 232-4055
Internet: <http://www.in.gov/dnr/dnroil>

FOR STATE USE ONLY	
Date Received (month, day, year) 2/10/2026	Initials KPCJ
Date Approved (month, day, year) 2/12/2026	Initials KPCJ
Date Denied (month, day, year)	Initials
Date Modified (month, day, year)	Initials

PART I GENERAL INFORMATION

Operator: Orphan Well		Telephone Number:	E-mail: orphanwells@dnr.IN.gov	
Lease-Well Number: Martin Moeller #6		Well Type: Oil		Permit Number: 50280
County: Dubois	Scheduled plugging date: (month, day, year)		Section 23	Township 2S
			Range 6W	1/4's

Surface:

Size	Length	Hole	Cement
8 5/8	55		66cf

Long String:

Size	Length	Hole	Cement
4 1/2	1564		462cf

Liner / Intermediate Casing:

Size	Length	Hole	Cement

Estimate top of cement (TOC): 0

Well Orientation: Vertical: Yes
Horizontal: Yes

Existing Perforations:

From	To
1526	1529

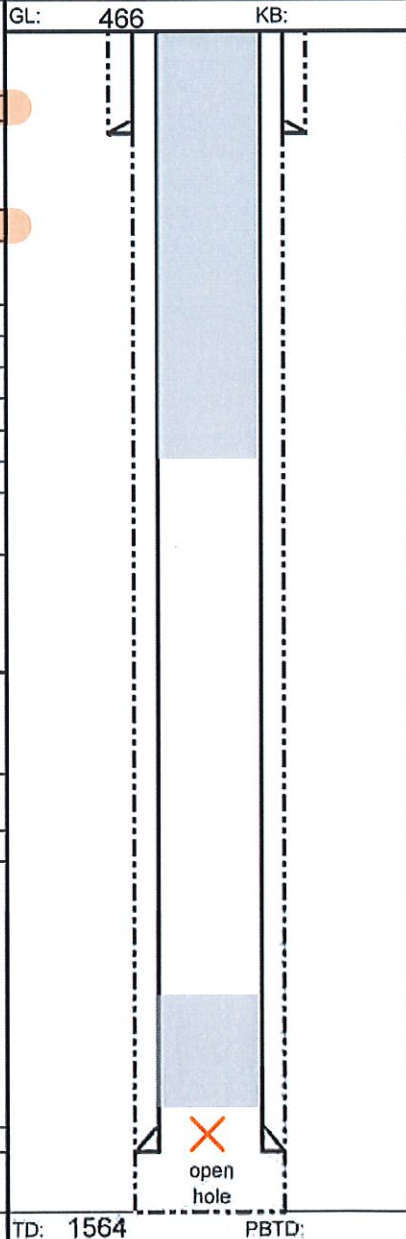
Proposed Perforations:

From	To

Proposed Casing to Pull - Amount:

Proposed cement types and volumes

Plug #	Cmt Type	Volume
1	CIBP	1sx
2	A	40
3		
4		



USDW Depth: 466
Well flowing? Yes No

Will you be disposing of NORM related waste during this plugging? Yes No
If yes, see Part III below.

Is well located in a commercially minable coal resource area? Yes No
If so, was the entity with rights to the coal rights notified? Yes When? Who was notified?

Comments:

Bottom plug: Set CIBP at +/-1510 w/1sx of cement

Top plug: verify cement on backside, perforate as needed, circulate full 506-0

PART II AFFIRMATION

I affirm under penalty of perjury that the information provided in this plan is true and correct to the best of my knowledge and belief. Furthermore, I understand that this plan will not be valid until approved by the Division of Oil and Gas and that upon said approval, it will remain valid for a period of not more than 180 days thereafter, unless the construction of the well has changed which also voids the plan.

Signature of operator or authorized agent _____ Date signed (month, day, year) _____





WELL PLUGGING PLAN

State Form 54872 (R4 / 3-20) Form No. P2

INDIANA DEPARTMENT OF NATURAL RESOURCES

Division of Oil and Gas
402 West Washington Street, Room W293
Indianapolis, IN 46204
Telephone: (317) 232-4055
Internet: <http://www.in.gov/dnr/dnroil>

FOR STATE USE ONLY

Date Received (month, day, year)	Initials
2/10/2026	KPCJ
Date Approved (month, day, year)	Initials
2/12/2026	KPCJ
Date Denied (month, day, year)	Initials
Date Modified (month, day, year)	Initials

PART I GENERAL INFORMATION

Operator: Orphan Well	Telephone Number:	E-mail: orphanwells@dnr.IN.gov
Lease-Well Number: Hoffman #2	Well Type: Gas	Permit Number: 51589
County: Dubois	Scheduled plugging date: (month, day, year)	Section 18 Township 3S Range 4W 1/4's

Surface:

Size	Length	Hole	Cement
8 5/8	47	12 1/4	30 sx

Long String:

Size	Length	Hole	Cement
4 1/2	1337	7 7/8	?

Liner / Intermediate Casing:

Size	Length	Hole	Cement

Estimate top of cement (TOC): circulated

Well Orientation: Vertical: Yes Horizontal: Yes

Existing Perforations:

From 1254	To 1263
From	To
From	To

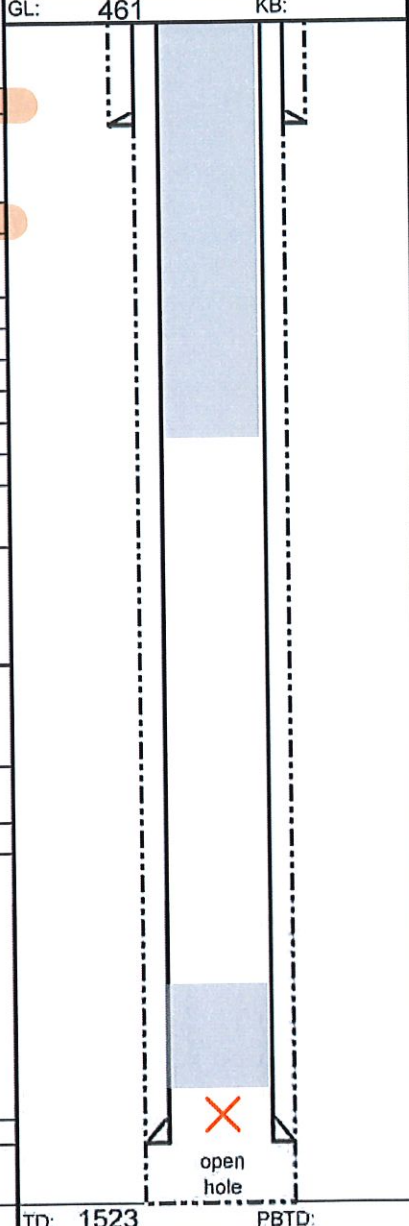
Proposed Perforations:

From	To
From	To
From	To

Proposed Casing to Pull - Amount:

Proposed cement types and volumes

Plug #1	Cmt Type CIBP	Volume 1sx
Plug #2	Cmt Type A	Volume +/-40
Plug #3	Cmt Type	Volume
Plug #4	Cmt Type	Volume



USDW Depth: 461

Well flowing? Yes No

Will you be disposing of NORM related waste during this plugging? Yes No
If yes, see Part III below.

Is well located in a commercially minable coal resource area? Yes No
If so, was the entity with rights to the coal rights notified? Yes No When?
Who was notified?

Comments:

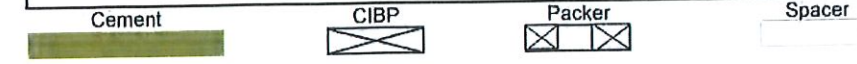
Bottom plug: Set CIBP at +/-1235 w/1sx of cement

Top plug: verify cement on backside, perforate as needed, circulate full 511-0

PART II AFFIRMATION

I affirm under penalty of perjury that the information provided in this plan is true and correct to the best of my knowledge and belief. Furthermore, I understand that this plan will not be valid until approved by the Division of Oil and Gas and that upon said approval, it will remain valid for a period of not more than 180 days thereafter, unless the construction of the well has changed which also voids the plan.

Signature of operator or authorized agent	Date signed (month, day, year)
---	--------------------------------





WELL PLUGGING PLAN

State Form 54872 (R4 / 3-20) Form No. P2

INDIANA DEPARTMENT OF NATURAL RESOURCES
Division of Oil and Gas
402 West Washington Street, Room W293
Indianapolis, IN 46204
Telephone: (317) 232-4055
Internet: <http://www.in.gov/dnr/dnroil>

FOR STATE USE ONLY	
Date Received (month, day, year)	Initials
2/10/2026	KPCJ
Date Approved (month, day, year)	Initials
2/12/2026	KPCJ
Date Denied (month, day, year)	Initials
Date Modified (month, day, year)	Initials

PART I GENERAL INFORMATION

Operator: Orphan Well		Telephone Number:	E-mail: orphanwells@dnr.IN.gov	
Lease-Well Number: Frances E Meyer #2-A		Well Type: Gas		Permit Number: 52387
County: Dubois	Scheduled plugging date: (month, day, year)		Section 6	Township 3S
			Range 4W	1/4's

Surface:

Size	Length	Hole	Cement
7	41	8 3/4	50

Long String:

Size	Length	Hole	Cement
4 1/2	1250	8 1/2	175

Liner / Intermediate Casing:

Size	Length	Hole	Cement

Estimate top of cement (TOC): 0

Well Orientation

Vertical: Yes

Horizontal: Yes

Existing Perforations:

From	To
1180	1196

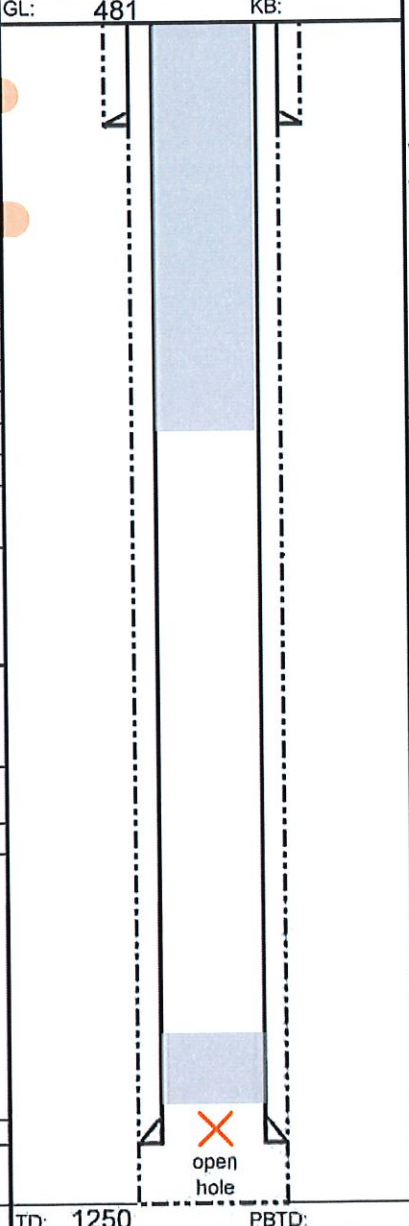
Proposed Perforations:

From	To

Proposed Casing to Pull - Amount:

Proposed cement types and volumes

Plug #	Cmt Type	Volume
1	CIBP	1sx
2	A	+/-40
3		
4		



USDW Depth: 481

Well flowing? Yes No

Will you be disposing of NORM related waste during this plugging? Yes No

If yes, see Part III below.

Is well located in a commercially minable coal resource area? Yes No

If so, was the entity with rights to the coal rights notified? Yes No When?

Who was notified?

Comments:

Bottom plug: Set CIBP at +/-1160 w/1sx of cement

Top plug: verify cement on backside, perforate as needed, circulate full 531-0

PART II AFFIRMATION

I affirm under penalty of perjury that the information provided in this plan is true and correct to the best of my knowledge and belief. Furthermore, I understand that this plan will not be valid until approved by the Division of Oil and Gas and that upon said approval, it will remain valid for a period of not more than 180 days thereafter, unless the construction of the well has changed which also voids the plan.

Signature of operator or authorized agent _____ Date signed (month, day, year) _____





WELL PLUGGING PLAN

State Form 54872 (R4 / 3-20) Form No. P2

INDIANA DEPARTMENT OF NATURAL RESOURCES
Division of Oil and Gas
402 West Washington Street, Room W293
Indianapolis, IN 46204
Telephone: (317) 232-4055
Internet: <http://www.in.gov/dnr/dnroil>

FOR STATE USE ONLY

Date Received (month, day, year)	Initials
2/10/2026	KPCJ
Date Approved (month, day, year)	Initials
2/12/2026	KPCJ
Date Denied (month, day, year)	Initials
Date Modified (month, day, year)	Initials

PART I GENERAL INFORMATION

Operator: Orphan Well		Telephone Number:	E-mail: orphanwells@dnr.IN.gov	
Lease-Well Number: George Bockting #3		Well Type: Gas		Permit Number: 48281
County: Dubois	Scheduled plugging date: (month, day, year)		Section 32	Township 2S
			Range 5W	1/4's

Surface:

Size	Length	Hole	Cement
8 5/8	61		75

Long String:

Size	Length	Hole	Cement
4 1/2	940		100

Liner / Intermediate Casing:

Size	Length	Hole	Cement

Estimate top of cement (TOC): 262

Well Orientation: Vertical: Yes
Horizontal: Yes

Existing Perforations:

From	To
From	To
From	To

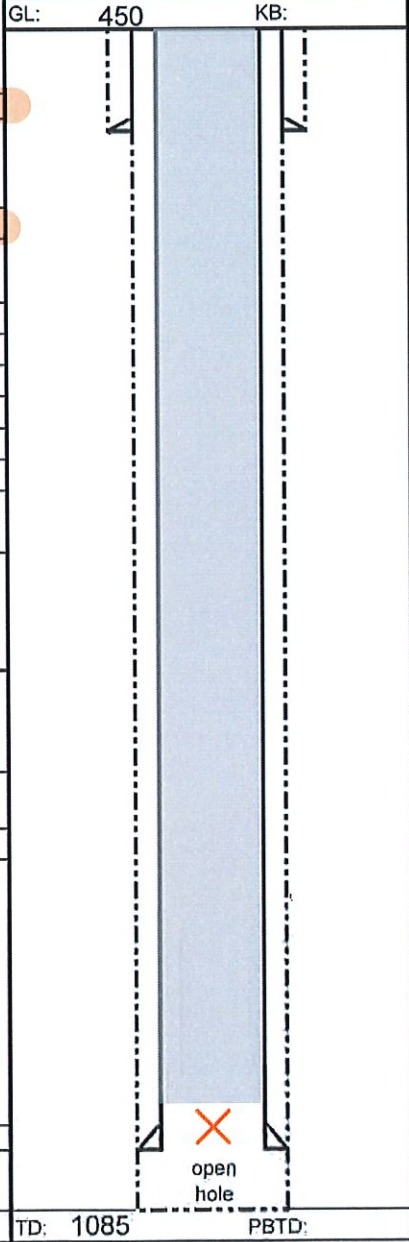
Proposed Perforations:

From ²⁵⁰	To ²⁴⁹
From	To
From	To

Proposed Casing to Pull - Amount:

Proposed cement types and volumes

Plug #1	Cmt Type CIBP*	Volume 1
Plug #2	Cmt Type A	Volume 120
Plug #3	Cmt Type	Volume
Plug #4	Cmt Type	Volume



USDW Depth: 450
Well flowing? Yes No

Will you be disposing of NORM related waste during this plugging? Yes No
If yes, see Part III below.

Is well located in a commercially minable coal resource area? Yes No
If so, was the entity with rights to the coal rights notified? Yes When? Who was notified?

Comments:

Bottom plug: Completion interval unknown, per drill log likely 870-878'

If no flow, solid fill cement 940-0
If flowing, CIBP at 850' w/1 sx

Top plug: Bond log to verify cement on backside, perforate as needed, circulate full 500-0

PART II AFFIRMATION

I affirm under penalty of perjury that the information provided in this plan is true and correct to the best of my knowledge and belief. Furthermore, I understand that this plan will not be valid until approved by the Division of Oil and Gas and that upon said approval, it will remain valid for a period of not more than 180 days thereafter, unless the construction of the well has changed which also voids the plan.

Signature of operator or authorized agent _____ Date signed (month, day, year) _____





WELL PLUGGING PLAN

State Form 54872 (R4 / 3-20) Form No. P2

INDIANA DEPARTMENT OF NATURAL RESOURCES

Division of Oil and Gas
402 West Washington Street, Room W293
Indianapolis, IN 46204
Telephone: (317) 232-4055
Internet: <http://www.in.gov/dnr/dnroil>

FOR STATE USE ONLY

Date Received (month, day, year) 2/10/2026	Initials RPF
Date Approved (month, day, year) 2/12/2026	Initials RPF
Date Denied (month, day, year)	Initials
Date Modified (month, day, year)	Initials

PART I GENERAL INFORMATION

Operator: Orphan Well		Telephone Number:	E-mail: orphanwells@dnr.IN.gov	
Lease-Well Number: Martin Moeller #10		Well Type: Oil		Permit Number: 50283
County: Dubois	Scheduled plugging date: (month, day, year)		Section 14	Township 2S
			Range 6W	1/4's

Surface:	Size	Length	Hole	Cement
	8 5/8	35		46.2cf
Long String:	Size	Length	Hole	Cement
	4 1/2	1624		462cf
Liner / Intermediate Casing:	Size	Length	Hole	Cement

Estimate top of cement (TOC): 0

Well Orientation
 Vertical: Yes
 Horizontal: Yes

Existing Perforations:

From 1583 To 1587

From To
From To

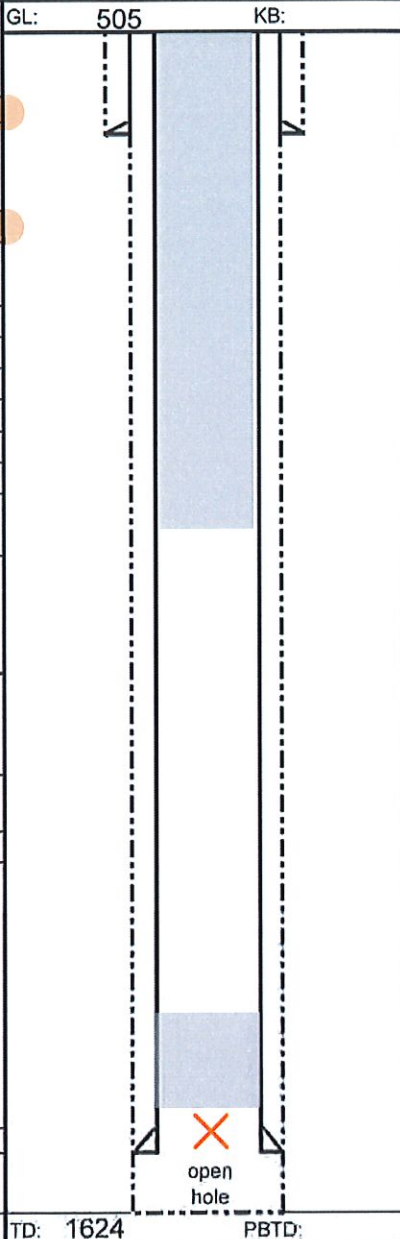
Proposed Perforations:

From To
From To
From To

Proposed Casing to Pull - Amount:

Proposed cement types and volumes

Plug #1	Cmt Type	Volume
	CIBP	1sx
Plug #2	Cmt Type	Volume
	A	45
Plug #3	Cmt Type	Volume
Plug #4	Cmt Type	Volume



USDW Depth: 505
 Well flowing? Yes No

Will you be disposing of NORM related waste during this plugging? Yes No
 If yes, see Part III below.

Is well located in a commercially minable coal resource area? Yes No

If so, was the entity with rights to the coal rights notified? Yes No When?

Who was notified?

Comments:

Bottom plug: Set CIBP at +/-1560 w/1sx of cement

Top plug: verify cement on backside, perforate as needed, circulate full 555-0

PART II AFFIRMATION

I affirm under penalty of perjury that the information provided in this plan is true and correct to the best of my knowledge and belief. Furthermore, I understand that this plan will not be valid until approved by the Division of Oil and Gas and that upon said approval, it will remain valid for a period of not more than 180 days thereafter, unless the construction of the well has changed which also voids the plan.

Signature of operator or authorized agent _____ Date signed (month, day, year) _____

Cement CIBP Packer Spacer



WELL PLUGGING PLAN

State Form 54872 (R4 / 3-20) Form No. P2

INDIANA DEPARTMENT OF NATURAL RESOURCES

Division of Oil and Gas
402 West Washington Street, Room W293
Indianapolis, IN 46204
Telephone: (317) 232-4055
Internet: <http://www.in.gov/dnr/dnroil>

FOR STATE USE ONLY

Date Received (month, day, year)	Initials
2/10/2026	KPCJ
Date Approved (month, day, year)	Initials
2/12/2026	KPCJ
Date Denied (month, day, year)	Initials
Date Modified (month, day, year)	Initials

PART I GENERAL INFORMATION

Operator: Orphan Well		Telephone Number:	E-mail: orphanwells@dnr.IN.gov	
Lease-Well Number: Hoffman #3		Well Type: Gas		Permit Number: 51723
County: Dubois	Scheduled plugging date: (month, day, year)		Section 18	Township 3S
			Range 4W	1/4's

Surface:

Size	Length	Hole	Cement
8 5/8	38	12 1/4	50

Long String:

Size	Length	Hole	Cement
5 1/2	741	7 7/8	150

Liner / Intermediate Casing:

Size	Length	Hole	Cement

Estimate top of cement (TOC): 0

Well Orientation

Vertical: Yes
Horizontal: Yes

Existing Perforations:

From 672 To 678

From To

From To

Proposed Perforations:

From To

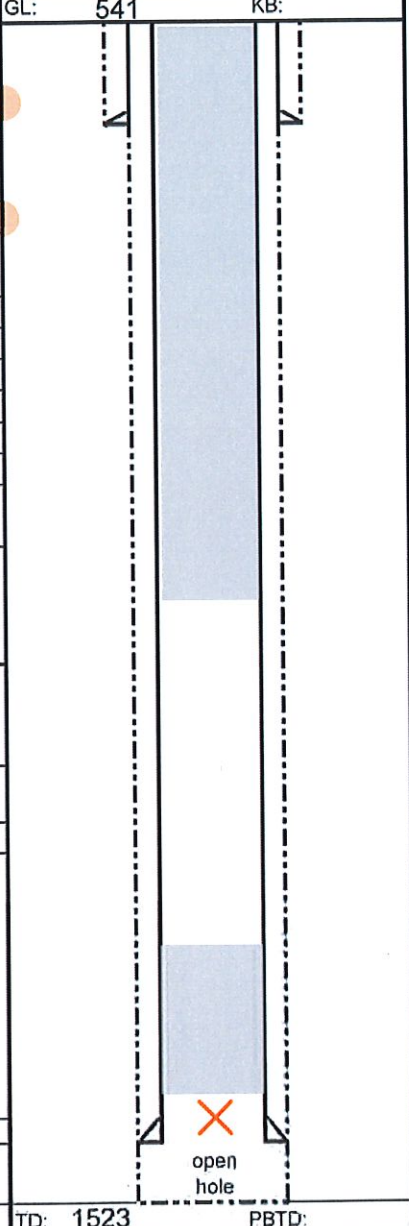
From To

From To

Proposed Casing to Pull - Amount:

Proposed cement types and volumes

Plug #1	
Cmt Type CIBP	Volume 1.5sx
Plug #2	
Cmt Type A	Volume +/-70
Plug #3	
Cmt Type	Volume
Plug #4	
Cmt Type	Volume



USDW Depth: 541

Well flowing? Yes No

Will you be disposing of NORM related waste during this plugging? Yes No
If yes, see Part III below.

Is well located in a commercially minable coal resource area? Yes No
If so, was the entity with rights to the coal rights notified? Yes No When?
Who was notified?

Comments:

Bottom plug: Set CIBP at +/-662 w/1.5sx of cement

Top plug: verify cement on backside, perforate as needed, circulate full 591-0

PART II AFFIRMATION

I affirm under penalty of perjury that the information provided in this plan is true and correct to the best of my knowledge and belief. Furthermore, I understand that this plan will not be valid until approved by the Division of Oil and Gas and that upon said approval, it will remain valid for a period of not more than 180 days thereafter, unless the construction of the well has changed which also voids the plan.

Signature of operator or authorized agent _____ Date signed (month, day, year) _____

Cement CIBP Packer Spacer



WELL PLUGGING PLAN

State Form 54872 (R4 / 3-20) Form No. P2

INDIANA DEPARTMENT OF NATURAL RESOURCES

Division of Oil and Gas
402 West Washington Street, Room W293
Indianapolis, IN 46204
Telephone: (317) 232-4055
Internet: <http://www.in.gov/dnr/dnroil>

FOR STATE USE ONLY

Date Received (month, day, year)	Initials
2/10/2026	RPCJ
Date Approved (month, day, year)	Initials
2/12/2026	RPCJ
Date Denied (month, day, year)	Initials
Date Modified (month, day, year)	Initials

PART I GENERAL INFORMATION

Operator: Orphan Well		Telephone Number:	E-mail: orphanwells@dnr.IN.gov	
Lease-Well Number: Anthony Hurst #3		Well Type: NC Gas		Permit Number: 17383
County: Dubois	Scheduled plugging date: (month, day, year)		Section 2	Township 3S
			Range 5W	1/4's

Surface:

Size	Length	Hole	Cement
10 3/4	23		?

Long String:

Size	Length	Hole	Cement
5	590		?

Liner / Intermediate Casing:

Size	Length	Hole	Cement

Estimate top of cement (TOC):

Well Orientation

Vertical: Yes

Horizontal: Yes

Existing Perforations:

From 590	To 600 open hole
From	To
From	To

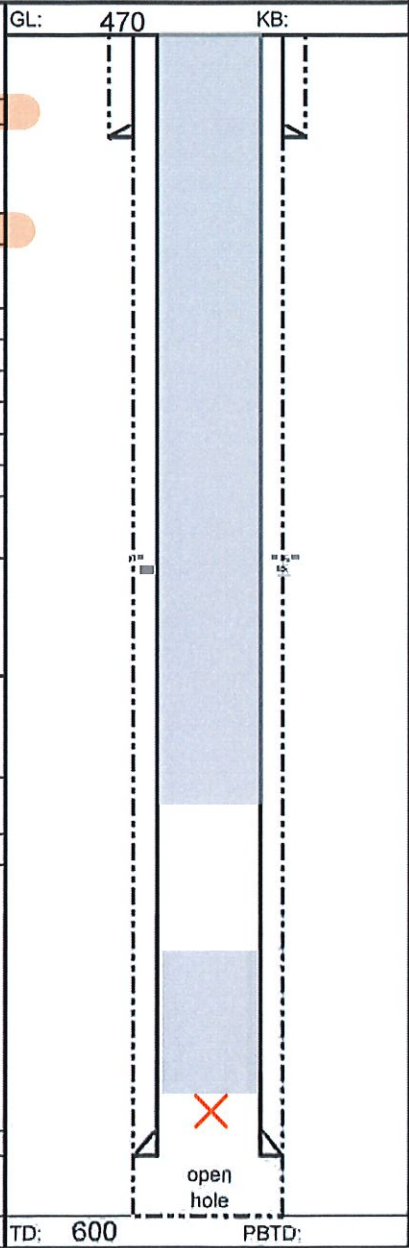
Proposed Perforations:

From	To
From	To
From	To

Proposed Casing to Pull - Amount:

Proposed cement types and volumes

Plug #1	
Cmt Type CIBP	Volume 1.5sx
Plug #2	
Cmt Type A	Volume 225
Plug #3	
Cmt Type	Volume
Plug #4	
Cmt Type	Volume



USDW Depth: 470

Well flowing? Yes No

Will you be disposing of NORM related waste during this plugging? Yes No

If yes, see Part III below.

Is well located in a commercially minable coal resource area? Yes No

If so, was the entity with rights to the coal rights notified? Yes When?

Who was notified?

Comments:

Bond log to verify cement on backside, perforate if needed, circulate

Bottom plug: Set CIBP at +/-570 w/1.5 sx of cement

Top plug:

Cement from 520 to surface

PART II AFFIRMATION

I affirm under penalty of perjury that the information provided in this plan is true and correct to the best of my knowledge and belief. Furthermore, I understand that this plan will not be valid until approved by the Division of Oil and Gas and that upon said approval, it will remain valid for a period of not more than 180 days thereafter, unless the construction of the well has changed which also voids the plan.

Signature of operator or authorized agent _____ Date signed (month, day, year) _____

Cement CIBP Packer Spacer