

WHITE COUNTY AREA PLAN COMMISSION

Joseph Rogers
Executive Director

P.O. Box 851
Monticello, IN 47960

Phone: 574/583-7355
Fax: 574/583-1593

ADA PARKING LOT RESTRIPE/RESURFACE/REPAIR REQUIREMENTS

For Changes To EXISTING Parking Lots - As of 07/15/2022

Provide a site plan that clearly defines:

	Dimensions for each handicap space, length and width (<i>minimum 9' x 20' for right angle parking</i>)
	Dimensions for each access aisle, length and width (<i>minimum of 5' for standard handicap space, 8' for van accessible and 5' for universal designed spaces aisles to be painted with cross-hatch pattern</i>)
	Access route location and markings (across any parking area or driveway or aisle, to be painted with cross-hatch pattern)
	Identification of universal symbol on parking space and location from rear of parking space to C/L of marking (<i>2 ½ foot, centered side to side. Pavement marking shall be 3' square in size.</i>)
	Signage detail and location (requires location of signage, height above ground/pavement level to bottom of signage, proximity of signage to access route and identification of the number of regular & van accessible handicap spaces)
	Number of total parking spaces in lot (if lot is separated into sections, indicate number of spaces in each section)
	Current space dimensions
	Current aisle dimensions
	Location of any current or planned ramp or curb cut for ADA routing
	Use of site (from use chart)
	Visual exhibit of current parking lot configuration and proposed parking lot configuration

Other Requirements: _____

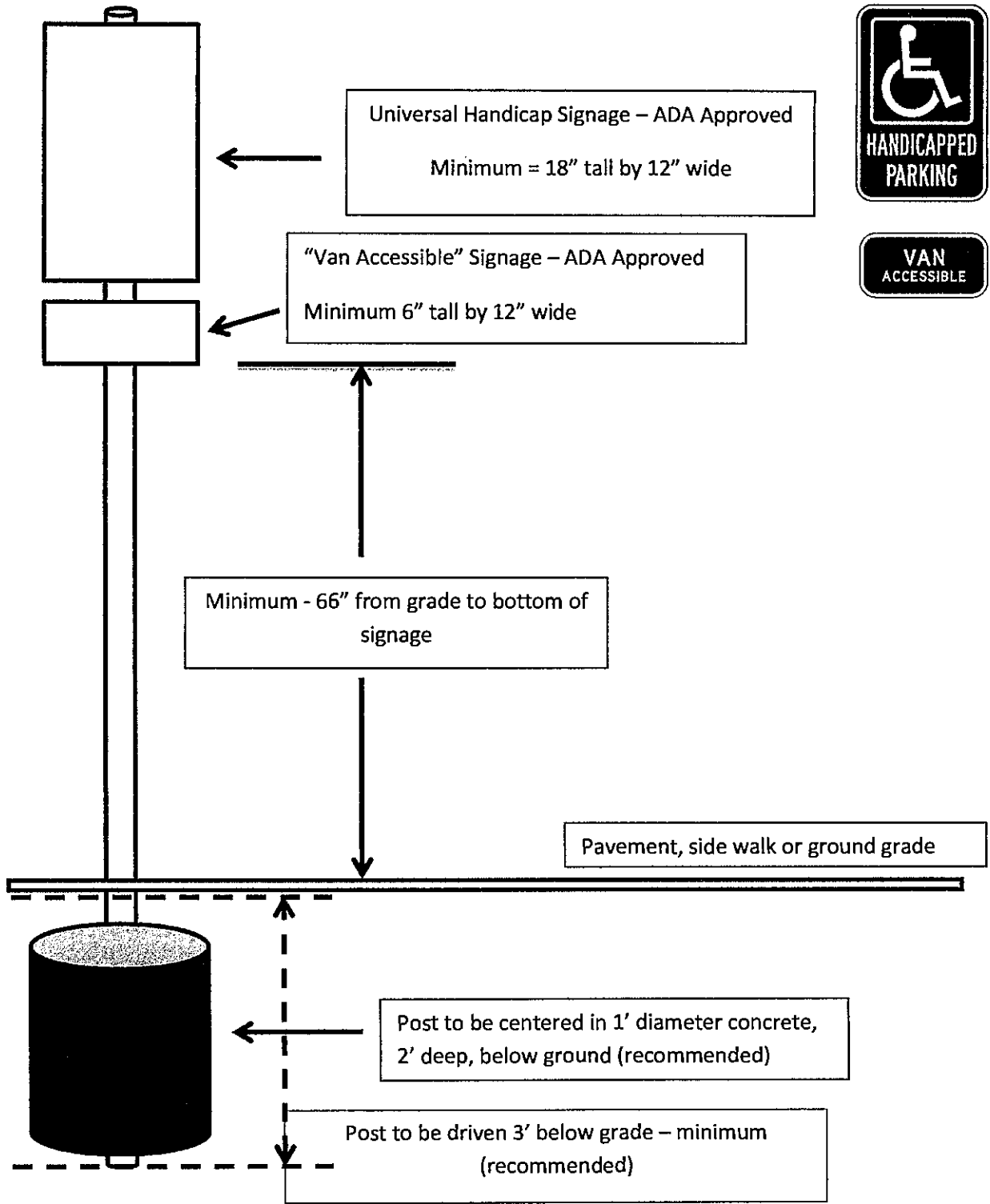
BASIC SIGN STANDARDS FOR ADA PARKING SPACE IDENTIFICATION

Number of Van Accessible Signs to be included at site: _____

Number of Standard Handicap Signs to be included at site: _____

Applicant/Contractor: _____ Initial _____ Date _____

Examples



Revised: 7/18/14

Pavement Marking Details

(For 90 degree parking)

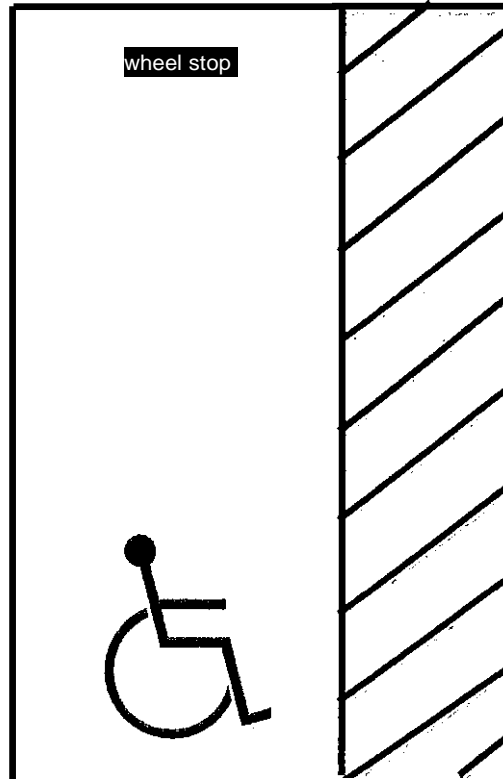
Handicap Sign
Pole or Wall Mounted

Handicap Sign
Pole or Wall Mounted

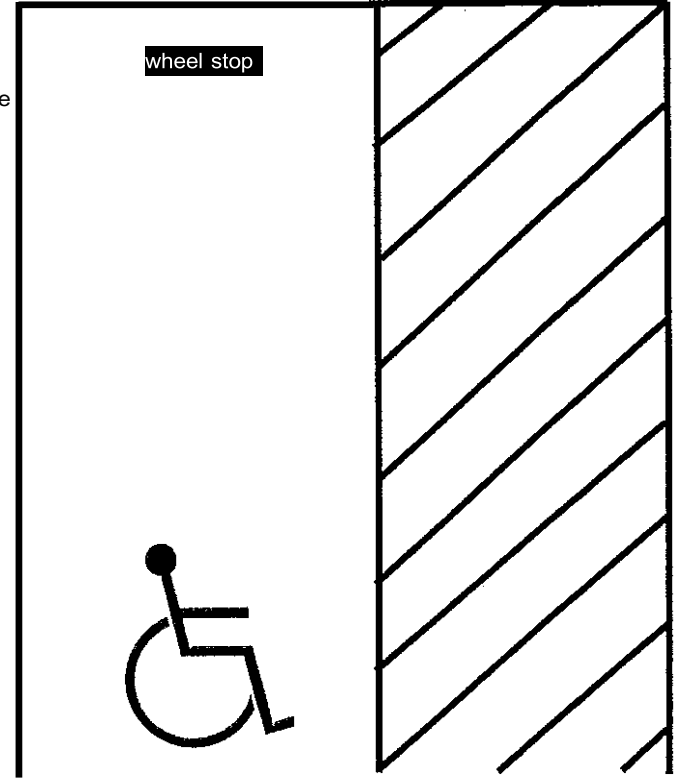
- Construction Details
- 1) Space & access aisle maximum slope = 1:50 (2%)
 - 2) Walking surfaces:
Route & sidewalk maximum running slope = 1:20
Route & sidewalk maximum cross slope = 1:48
This excludes ramps and curb ramps which have different slope and measurement allowances
 - 3) Access routes must be a minimum of 36" wide
 - 4) Parking lot and circulation routes must meet all other standards of the White County Indiana Zoning Control Ordinance



Symbol Should Measure
3' Square



Wheel Stop
24" from end of space



Pavement Symbols to Be Located No further than 2 ½' From End Of Space to the Center of the Symbol

Notes:

- 1) All lines to be 4" wide and painted blue
- 2) All ADA parking spaces to be 20' deep by 9' wide
- 3) All van accessible access aisles to be 20' deep by 8' wide
- 4) All standard access aisles to be 20' deep by 5' wide
- 5) Access aisle patterns to be painted at 45 degree angles, 3' apart
- 6) All measurements are from center line or end of line, whichever is appropriate
- 7) Parking symbols on pavement to be 3' square, located no further than 2 ½' from end of space to the center of the symbol

Site to include _____ van accessible ADA spaces and _____ regular ADA spaces

_____ Applicant's Signature _____ Date

Table 8.1 - Parking Spaces Accessible to the Disabled

Total Number of Parking Spaces In Lot	Minimum Number of Accessible Spaces Required
1 to 25	1
26 to 50	2
51 to 75	3
76 to 100	4
101 to 150	5
151 to 200	6
201 to 300	7
301 to 400	8
401 to 500	9
501 to 1000	2% of total
1001 and over	20 plus 1 for each 100 over 1000

8.5.1 Required spaces

Accessible parking spaces shall be provided at the rate prescribed by Table 8.1, Parking Spaces Accessible to the Disabled. In addition to these requirements, uses with accessible patient parking at outpatient facilities must equal no less than ten percent (10%) of the required parking, and facilities which specialize in treatment or services for persons with mobility impairments shall provide accessible parking equaling no less than twenty percent (20%) of the required parking for patient use.

A minimum of one (1) van accessible space is required for all sites. Sites which require sixteen (16) accessible spaces or more, one (1) van accessible space shall be incorporated into the parking area for each six (6) accessible parking spaces required. – Per Federal Guideline Change 01/01/15.

Table 8.2 - Minimum Space and Aisle Dimensions of Parking Spaces

Parking Angle¹ (in degrees)	Space Width (in feet)	Space Depth (in feet)	Aisle Width (in feet)
Parallel	9 ²	22'	12'
Right Angle	9'	20'	24'
60° angle	9'	18'	18'
45° angle	9'	17'	18'
Small Car*	8'	15'	18'

¹ Spaces exclusive for compact or subcompact cars may be used only if specifically designated "For Small Cars Only." A maximum of twenty-five percent (25%) of a parking area may be designated for small cars.

² This may be reduced to eight (8) feet per Section 8.5.1(A).