

Dist - Claim

FIELD NOTES---EXPLANATION OF.

240
1110
2110
90

	39.95	2.70	2.90	1.17	1.18	1.17	1.25	3.70	
	55.25 A 77.77	106.92	106.56	109.97	109.14	105.30	105.86	108.59	107.47
	6	5	4	3	2	1	8		
105	145.48 Y 36.75	80 10	80 25	80 20	82 00	78 00		H	
	139.65								
	7	5	8	5	9	5	10	5	11
X	140.14 X 36.98	80 20	80 10	81 15	82 00	78 35		I	
	3.50								
	154.25								
	6	5	4	3	2	1			
	18	17	16	15	14	13			
2.00	37.00 W 149.94	80 00	80 24	81 18	81 50	79 00		K	
	150.34								
	6	5	4	3	2	1			
.68	37.00 V 149.15	80 10	80 22	80 15	81 00	79 28		L	
	148.75								
	30	2	29	2	28	2	27	2	26
	6	5	4	3	2	1			
27	37.00 U 148.76	80 20	80 20	80 00	80 75	79 80		M	
	147.95								
	31	32	33	34	35	36			
175	38.128 T	S	R	Q	P	O	N		

Water 75' East

Township 13 North, Range 7 East.

Field Notes of Shelby County, Indiana.

Township / 3

North, Range 7

East. East 2nd Pm. Merid.

Corners.	Bearing Trees.	Diam.	Courses.	Dist.		Corners.	Bearing Trees.	Diam.	Courses.	Dist.
A.	Beech	9	S 25 E	7		G.	Quaking Asp	15	N 2 E	25
	so	24	N 45 N	12			N-Oak	12	N 2 N	22
A'						G'	Beech	19	N 37 N	1
B.	Beech	24	S 38 E	19			Ash	24	S 32 E	7
	so	12	N 77 N	12		H.	Beech	12	N 30 N	12
B'							Sugar	24	N 50 E	31
C.	Walckony	24	N 50 N	12		H'	Beech	18	N 15 N	35
	Beech	6	S 20 E	19			Sycamore	12	N 14 E	16
C'						I.	Box-Elder	9	N 72 E	5
D.	Ash	12	N 53 E	23		I'	Sycamore	9	N 24 N	27
	Buckeye	17	N 45 N	12			Beech	30	S 40 N	8
D'							so	5	N 77 E	22
E.	Sycamore	10	S 43 N	2		K.	Beech	12	N 60 E	10
	Elm	4	North	7			Ash	15	N 67 E	—
E'						K'	Sugar	27	—	15
F.	Sugar	6	N 41 E	15			Beech	9	N 18 N	29
	Buckeye	6	N 60 N	18		L.	so	13	S 19 N	12
F'							Sugar	9	N 13 E	18
						L'	Walckony	15	N 31 E	4
							so	27	N 73 N	25
						M.	Beech	9	N 31 N	22
							so	14	N 18 E	18
						M'	Sugar	8	N 6 N	19
							Beech	27	N 4 E	4

Field Notes of Shelby County, Indiana.

Township *13*

North, Range *7*

East. *East*

Corners.	Bearing Trees.	Diam.	Courses.	Dist.		Corners.	Bearing Trees.	Diam.	Courses.	Dist.
<i>N</i>	<i>Sugar</i>	<i>6</i>	<i>N 17 E</i>	<i>11</i>		<i>S</i>	<i>Blue Ash</i>	<i>12</i>	<i>N 75 E</i>	<i>8</i>
	<i>Beech</i>	<i>9</i>	<i>N 11 N</i>	<i>27</i>			<i>Elm</i>	<i>15</i>	<i>N 20 N</i>	<i>32</i>
<i>N'</i>	<i>Water Beech</i>	<i>6</i>	<i>N 35 W</i>	<i>5</i>		<i>T</i>	<i>Elm</i>	<i>12</i>	<i>N 4 N</i>	<i>18</i>
	<i>Walckony</i>	<i>6</i>	<i>N 12 E</i>	<i>18</i>			<i>do</i>	<i>12</i>	<i>N 65 E</i>	<i>20</i>
<i>O</i>	<i>Beech</i>	<i>12</i>	<i>N 42 E</i>	<i>27</i>		<i>T'</i>				
	<i>Ash</i>	<i>26</i>	<i>N 10 N</i>	<i>10</i>		<i>U</i>	<i>Beech</i>	<i>8</i>	<i>N 16 E</i>	<i>7</i>
<i>O'</i>	<i>Beech</i>	<i>27</i>	<i>N 85 E</i>	<i>25</i>			<i>do</i>	<i>14</i>	<i>N 87 E</i>	<i>19</i>
	<i>do</i>	<i>15</i>	<i>N 83 N</i>	<i>17</i>		<i>U</i>				
<i>P</i>	<i>do</i>	<i>8</i>	<i>N 35 E</i>	<i>16</i>		<i>V</i>	<i>Ash</i>	<i>10</i>	<i>N 70 E</i>	<i>20</i>
	<i>do</i>	<i>9</i>	<i>N 12 N</i>	<i>14</i>			<i>Beech</i>	<i>14</i>	<i>N 80 N</i>	<i>13</i>
<i>P'</i>	<i>Wamp-Ash</i>	<i>6</i>	<i>N 22 E</i>	<i>20</i>		<i>V'</i>				
	<i>Ash</i>	<i>18</i>	<i>N 25 N</i>	<i>14</i>		<i>W</i>	<i>Beech</i>	<i>14</i>	<i>N 25 N</i>	<i>15</i>
<i>Q</i>	<i>Gum</i>	<i>24</i>	<i>N 35 N</i>	<i>22</i>			<i>do</i>	<i>12</i>	<i>N 3 N</i>	<i>6</i>
	<i>Beech</i>	<i>12</i>	<i>N 35 N</i>	<i>9</i>		<i>W'</i>				
<i>Q'</i>	<i>Elm</i>	<i>10</i>	<i>N 72 E</i>	<i>27</i>		<i>X</i>	<i>Beech</i>	<i>12</i>	<i>N 42 N</i>	<i>9</i>
	<i>Sycamore</i>	<i>27</i>	<i>N 60 N</i>	<i>31</i>			<i>do</i>	<i>4</i>	<i>N 10 N</i>	<i>18</i>
<i>R</i>	<i>Beech</i>	<i>18</i>	<i>N 86 E</i>	<i>23</i>		<i>X'</i>				
	<i>do</i>	<i>14</i>	<i>N 72 N</i>	<i>24</i>						
<i>R'</i>	<i>do</i>	<i>12</i>	<i>N 70 E</i>	<i>11</i>						
	<i>Hulberry</i>	<i>15</i>	<i>N 55 N</i>	<i>21</i>						
<i>S</i>	<i>Buckeye</i>	<i>18</i>	<i>N 82 E</i>	<i>15</i>						
	<i>hackberry</i>	<i>15</i>	<i>N 59 N</i>	<i>10</i>						

Field Notes of Shelby County, Indiana.

Township / *B* North, Range *7* East. *East 2nd Princeton*

Corners.	Bearing Trees.	Diam.	Courses.	Dist.	Corners.	Bearing Trees.	Diam.	Courses.	Dist.
<i>Y</i>	<i>Beech</i>	<i>12</i>	<i>N 64 W</i>	<i>8</i>	<i>2. 3. 10. 11</i>	<i>Beech</i>	<i>10</i>	<i>N 21 E</i>	<i>23</i>
<i>Y</i>	<i>do</i>	<i>3</i>	<i>S 3 N</i>	<i>15</i>		<i>do</i>	<i>4</i>	<i>S 5 E</i>	<i>23</i>
					<i>27. 28. 33. 34</i>	<i>do</i>	<i>8</i>	<i>N 57 W</i>	<i>16</i>
<i>25. 26. 35. 36</i>	<i>N Oak</i>	<i>48</i>	<i>East</i>	<i>2</i>		<i>Sugar</i>	<i>12</i>	<i>S 45 E</i>	<i>18</i>
	<i>B Walnut</i>	<i>12</i>	<i>S 34 E</i>	<i>30</i>	<i>21. 22. 27. 28</i>	<i>Hickory</i>	<i>10</i>	<i>N 84 E</i>	<i>21</i>
<i>23. 24. 25. 26</i>	<i>Beech</i>	<i>14</i>	<i>S 55 E</i>	<i>11</i>		<i>do</i>	<i>10</i>	<i>N 35 W</i>	<i>13</i>
	<i>do</i>	<i>10</i>	<i>S 75 W</i>	<i>10</i>	<i>13. 14. 21. 22</i>	<i>Ash</i>	<i>18</i>	<i>N 8 E</i>	<i>29</i>
<i>13. 14. 23. 24</i>	<i>do</i>	<i>6</i>	<i>N 77 W</i>	<i>7</i>		<i>do</i>	<i>24</i>	<i>S 59 W</i>	<i>19</i>
	<i>do</i>	<i>24</i>	<i>N 81 E</i>	<i>19</i>	<i>9. 10. 15. 16</i>	<i>Beech</i>	<i>20</i>	<i>N 59 W</i>	<i>11</i>
<i>11. 12. 13. 14</i>	<i>Ash</i>	<i>3</i>	<i>N 53 W</i>	<i>9</i>		<i>Sugar</i>	<i>12</i>	<i>S 57 E</i>	<i>27</i>
	<i>do</i>	<i>12</i>	<i>S 16 E</i>	<i>20</i>	<i>3. 4. 9. 10</i>	<i>Beech</i>	<i>12</i>	<i>N 49 E</i>	<i>8</i>
<i>1. 2. 11. 12</i>	<i>Hickory</i>	<i>10</i>	<i>N 69 W</i>	<i>32</i>		<i>do</i>	<i>24</i>	<i>S 24 W</i>	<i>23</i>
	<i>Ash</i>	<i>12</i>	<i>N 72 E</i>	<i>14</i>	<i>28. 29. 32. 33</i>	<i>Hickory</i>	<i>10</i>	<i>N 69 E</i>	<i>33</i>
<i>26. 27. 34. 35</i>	<i>Beech</i>	<i>5</i>	<i>S 87 E</i>	<i>7</i>		<i>Sycamore</i>	<i>8</i>	<i>N 62 E</i>	<i>102</i>
	<i>do</i>	<i>14</i>	<i>N 88 W</i>	<i>27</i>	<i>21. 21. 28. 29</i>	<i>Hackberry</i>	<i>10</i>	<i>S 49 E</i>	<i>11</i>
<i>22. 23. 26. 27</i>	<i>Buckeye</i>	<i>6</i>	<i>S 10 E</i>	<i>23</i>		<i>Buckeye</i>	<i>10</i>	<i>N 67 W</i>	<i>36</i>
	<i>do</i>	<i>12</i>	<i>N 76 E</i>	<i>22</i>	<i>16. 17. 20. 21</i>	<i>Beech</i>	<i>12</i>	<i>N 37 W</i>	<i>20</i>
<i>14. 15. 22. 23</i>	<i>Ash</i>	<i>3</i>	<i>N 57 W</i>	<i>12</i>		<i>do</i>	<i>8</i>	<i>S 32 W</i>	<i>12</i>
	<i>do</i>	<i>2</i>	<i>N 71 E</i>	<i>21</i>	<i>8. 9. 16. 17</i>	<i>Sycamore</i>	<i>36</i>	<i>N 27 E</i>	<i>22</i>
<i>10. 11. 14. 15</i>	—	<i>10</i>	<i>S 31 E</i>	<i>14</i>		<i>do</i>	<i>48</i>	<i>S 4 W</i>	<i>36</i>
	<i>Sugar</i>	<i>11</i>	<i>N 18 E</i>	<i>14</i>	<i>4. 5. 8. 9</i>	<i>N Oak</i>	<i>10</i>	<i>N 44 W</i>	<i>11</i>
						<i>Hackberry</i>	<i>12</i>	<i>S 24 E</i>	<i>3</i>

Field Notes of Shelby County, Indiana.

Township *13* North, Range *7* East. *East*

Corners.	Bearing Trees.	Diam.	Courses.	Dist.		Corners.	Bearing Trees.	Diam.	Courses.	Dist.
<i>29.30.31.32</i>	<i>Beech</i>	<i>10</i>	<i>N 46 W</i>	<i>17</i>		<i>M to U.</i>	<i>Beech</i>	<i>24</i>	<i>N 23 W</i>	<i>37</i>
	<i>Buckeye</i>	<i>8</i>	<i>S 18 E</i>	<i>8</i>			<i>do</i>	<i>11</i>	<i>South</i>	<i>35</i>
<i>19.20.29.30</i>	<i>Beech</i>	<i>10</i>				<i>2</i>	<i>do</i>	<i>8</i>	<i>S 30 W</i>	<i>20</i>
	<i>do</i>	<i>13</i>					<i>do</i>	<i>4</i>	<i>S 82 E</i>	<i>20</i>
<i>17.18.19.20</i>	<i>do</i>	<i>12</i>	<i>N 62 E</i>	<i>25</i>		<i>3</i>	<i>Willow</i>	<i>6</i>	<i>North</i>	<i>42</i>
	<i>Ash</i>	<i>14</i>	<i>S 60 W</i>	<i>3</i>			<i>Elm</i>	<i>10</i>	<i>S 69 E</i>	<i>80</i>
<i>7.8.17.18</i>	<i>Hickory</i>	<i>6</i>	<i>N 32 E</i>	<i>9</i>		<i>4</i>	<i>Hickory</i>	<i>14</i>	<i>N 63 W</i>	<i>14</i>
	<i>Ash</i>	<i>4</i>	<i>S 39 W</i>	<i>19</i>			<i>Beech</i>	<i>10</i>	<i>S 45 E</i>	<i>19</i>
<i>3.4.7.8</i>	<i>Maple</i>	<i>12</i>	<i>N 40 W</i>	<i>12</i>		<i>5</i>	<i>Ash</i>	<i>3</i>	<i>N 32 W</i>	<i>27</i>
	<i>do</i>	<i>10</i>	<i>S 14 E</i>	<i>21</i>			<i>Hickory</i>	<i>12</i>	<i>S 50 E</i>	<i>24</i>
						<i>6</i>	<i>Beech</i>	<i>6</i>	<i>N 42 W</i>	<i>2</i>
							<i>do</i>	<i>24</i>	<i>S 42 E</i>	<i>5</i>
						<i>I to V.</i>	<i>Beech</i>	<i>12</i>	<i>N 16 E</i>	<i>8</i>
							<i>do</i>	<i>24</i>	<i>S 15 W</i>	<i>32</i>
						<i>2</i>	<i>Beech</i>	<i>14</i>	<i>S 3 E</i>	<i>8</i>
							<i>Sugar</i>	<i>14</i>	<i>N 46 W</i>	<i>24</i>
						<i>3</i>	<i>Beech</i>	<i>20</i>	<i>N 75 W</i>	<i>25</i>
							<i>do</i>	<i>14</i>	<i>N 41 E</i>	<i>13</i>
						<i>4</i>	<i>Ash</i>	<i>12</i>	<i>N 2 W</i>	<i>11</i>
							<i>W-oak</i>	<i>10</i>	<i>S 21 E</i>	<i>18</i>
						<i>5</i>	<i>Buckeye</i>	<i>14</i>	<i>N 46 W</i>	<i>3</i>
							<i>Hon bear</i>	<i>4</i>	<i>S 89 W</i>	<i>11</i>
						<i>6</i>	<i>Beech</i>	<i>3</i>	<i>S 83 W</i>	<i>10</i>
							<i>do</i>	<i>12</i>	<i>N 89 E</i>	<i>15</i>

Field Notes of Shelby County, Indiana.

Township *13* North, Range *7* East. *East 2nd of Pine Merid.*

Corners.	Bearing Trees.	Diam.	Courses.	Dist.	Corners.	Bearing Trees.	Diam.	Courses.	Dist.
<i>K to W. 1.</i>	Beech	20	N 33 W	7	<i>H to Y. 1.</i>	Beech	24	N 66 E	18
	N-Oak	20	S 65 E	17		do	12	S 13 W	23
2	Ash	14	S 24 E	12	2	Beech	8	North	7
	Beech	12	N 14 E	15		Ash	3	S 29 E	8
3	Maple	21	N 77 E	7	3	Beech	10	S 60 W	9
	Ash	24	S 38 W	32		do	4	N 75 E	15
4	Beech	24	N 38 E	16	4	Beech	20	N 38 W	18
	Wickory	10	S 65 W	13		do	14	S 30 E	28
5	Ash	10	S 79 E	14	5	Beech	20	N 31 W	3
	Buckeye	8	N 34 W	10		do	14	S 12 W	28
6	Beech	6	N 25 W	11	6	N-Oak	18	S 69 W	20
	do	16	S 65 E	5		Ash	4	S 80 E	16
<i>II to X. 1.</i>	Wackberry	14	N 6 W	17	<i>O to F. 1.</i>	Beech	12	S 67 W	30
	Ash	8	S 12 E	17		Ash	12	S 38 E	25
2	Beech	10	N 6 E	4	2	Beech	6	N 35 E	9
	Ash	24	S 71 W	10		do	10	S 35 W	26
3	Beech	20	N 85 E	5	3	Beech	12	N 45 W	17
	do	24	S 75 W	35		do	12	S 75 E	32
4	Ash	14	N 24 W	3	4	Beech	20	N 10 E	7
	Beech	10	S 35 W	14		do	18	S 40 W	44
5	Beech	10	N 23 E	42	5	N-Oak	10	N 52 E	17
	Buckeye	8	S 37 W	18		Lime	8	S 52 W	3
6	Ash	14	N 1 W	35	6	Ash	14	S 50 W	33
	do	13	S 21 W	27		do	6	N 70 E	10

Field Notes of Shelby County, Indiana.

Township *1 B* North, Range *7* East. *East of 2nd*

Corners.	Bearing Trees.	Diam.	Courses.	Dist.	Corners.	Bearing Trees.	Diam.	Courses.	Dist.
<i>P to E. 1.</i>	Beech	12	S 74 E	22	<i>R to C. 1.</i>	Beech	12	S 56 E	23
	so	10	N 21 W	17		so	14	S 38 W	13
2	Beech	6	N 72 W	4	2	Buckeye	12	N 84 E	9
	so	10	N 43 E	16		Hickory	10	N 87 W	13
3	Ash	30	S 71 W	8	3	Beech	2	N 37 W	11
	so	14	N 84 E	22		so	8	S 32 W	12
4	Beech	13	S 20 W	21	4	Buckeye	5	N 33 W	17
	so	20	N 14 E	17		Walnut	12	S 20 E	22
5	Walnut	8	S 85 E	23	5	Ash	16	S 37 E	19
	Buckeye	3	S 60 W	19		Elm	8	N 69 W	6
6	Ash	10	N 20 W	11	6	Honeybean	8	N 76 W	6
	so	14	S 38 E	13		Hickory	2	S 9 E	13
<i>Q to D. 1.</i>	Beech	14	N 37 W	19	<i>S to B. 1.</i>	Sugar	14	N 74 W	19
	Ash	18	S 31 E	29		Beech	14	N 67 E	23
2	Elm	36	N 39 E	5	2	Beech	10	N 20 W	4
	so	24	S 31 W	9		so	12	S 7 E	29
3	Maple	24	N 53 W	20	3	Linn	30	South	31
	Ash	12	S 18 E	23		Beech	20	S 64 W	26
4	Sugar	24	N 80 W	82	4	Ash	20	S 37 E	16
	Beech	12	N 65 E	24		so	12	N 12 E	35
5	Beech	10	N 84 E	12	5	Linn	12	N 69 E	15
	so	14	S 73 W	16		Beech	12	N 80 W	16
6	Beech	12	S 34 W	4	6	Ash	8	N 3 W	30
	Hickory	3	N 45 E	19		so	3	S 3 W	15

Record of Surveys in Shelby County, Indiana.

Section **1** Township **13** North, Range **7** East. **13**

Date, Intermediate Corners, &c., &c.	Corners.	Stone, Mark, &c.	Acres.	Innd.	Bearings, Trees, &c.	Diam.	Courses.	Dist.
	C				Cycamore	20	10 E	10
	M				Hickory	3	NE	8
	N				Beech	16	S E	6
	W.				do	17	N 80 W	31
	E				Elm	12	N 20 E	30
	Y				do	9	S W	26
Former Surveyor Nov 28th 1834	E	Stone			Poplar	12	W	10
Geo Fargis Surveyor April 19th 1860	Y	"			Shup Ash	3	S 80 E	5 1/2
	Z Q R	"			No Nit		Given.	
	P O.	"			Elm	8	N 87 1/2 W	22
	P	"			do	8	N 37 1/2 E	37 1/2
40 Rods South of	P	"			No Nit		Given	
	X				do		do	
	W				do		do	
July 27th 1890. I find 25 ft. N. of proper place, Churnin & flagman. Iron, all parties notified, by writing Kumar Finley, County Surveyor, Dec. 2 1941 wit for	X W	Boulder. Sand Stone			Ed Kinchel. Surveyor			
					Stone		South	25-
					Boulder		East	25-
					Stones		N.E. S.E.	} 2 rds.

Record of Surveys in Shelby County, Indiana.

Section *2* Township *13* North, Range *7* East. *19*

Date, Intermediate Corners, &c., &c.	Corners.	Stone, Mark, &c.	Acres.	Hud.	Bearings, Trees, &c.	Diam.	Courses.	Dist.
<i>No date known</i>	<i>C</i>				<i>No Oak</i>	<i>3 1/2</i>		<i>13</i>
	<i>D</i>				<i>Hickory</i>	<i>3</i>	<i>ct</i>	<i>16</i>
	<i>E</i>				<i>Elm</i>	<i>4</i>	<i>ct 50 ft</i>	<i>3</i>
	<i>F</i>				<i>Hickory</i>	<i>8</i>	<i>1/2 3 E</i>	<i>19</i>
	<i>G</i>				<i>Sugar</i>	<i>22</i>	<i>ct 3 ft</i>	<i>22</i>
	<i>H</i>				<i>Box-Elder</i>	<i>12</i>	<i>1/2 28 ft</i>	<i>19</i>
	<i>I</i>				<i>Elm</i>	<i>12</i>	<i>ct 6 ft</i>	<i>23</i>
	<i>J</i>				<i>Hickory</i>	<i>16</i>	<i>1/2 70 E</i>	<i>13</i>
	<i>K</i>				<i>Sugar</i>	<i>10</i>	<i>1/2</i>	<i>20 1/2</i>
	<i>L</i>				<i>Hickory</i>	<i>18</i>	<i>1/2 65 E</i>	<i>11</i>
	<i>M</i>				<i>Beech</i>	<i>10</i>	<i>ct 70 ft</i>	<i>27</i>
	<i>N</i>				<i>Poplar</i>	<i>60</i>	<i>ct 3 ft</i>	<i>22</i>
	<i>O</i>		<i>Stone</i>		<i>No Handrick</i>	<i>Sumeyors</i>	<i>1/2</i>	
	<i>P</i>				<i>No Nit</i>	<i>Spiner</i>		
<i>April 19th 1860</i>	<i>U.L.A</i>	<i>Stones</i>			<i>do</i>			
<i>73 1/2 Rods North of</i>	<i>X.W.</i>	<i>"</i>			<i>do</i>			
<i>Same N of</i>	<i>W</i>	<i>"</i>			<i>do</i>			
<i>above</i>	<i>V</i>	<i>"</i>			<i>do</i>			
<i>above</i>	<i>above</i>	<i>"</i>			<i>do</i>			
<i>above</i>	<i>Q</i>	<i>Stone mark</i>			<i>Ed Winchel</i>	<i>Sumeyor</i>		
<i>above</i>	<i>R</i>				<i>Lin.</i>	<i>16</i>	<i>1/2 20 E</i>	<i>22</i>
<i>above</i>	<i>R</i>				<i>Stone</i>		<i>1/2 3 E</i>	<i>10</i>
<i>above</i>	<i>R</i>			<i>old Bear</i>	<i>Hickory</i>	<i>18</i>	<i>1/2 65 E</i>	<i>11</i>
<i>above</i>	<i>R</i>				<i>Book</i>	<i>15</i>	<i>1/2 24 E</i>	<i>43 1/2</i>

Record of Surveys in Shelby County, Indiana.

Section *2*

Township *13*

North, Range *7*

East.

Date, Intermediate Corners, &c., &c.	Corners.	Stone, Mark, &c.	Acres.	Hnd.	Bearings, Trees, &c.	Diam.	Courses.	Dist.
<i>9.91 chains W of</i>	<i>O</i>	<i>Stone mark</i>			<i>Linn</i>	<i>14</i>	<i>N 2 E</i>	<i>31</i>
	<i>O</i>	<i>Stone mark</i>	<i>7</i>		<i>B. oak</i>	<i>12</i>	<i>N 72 E</i>	<i>30 1/2</i>
					<i>S. ash</i>	<i>24</i>	<i>S 39 E</i>	<i>24</i>
					<i>do</i>	<i>20</i>	<i>S 22 1/2 W</i>	<i>22 1/2</i>
<i>9.98 chains W of</i>	<i>P</i>	<i>Stone m</i>	<i>P</i>		<i>ash</i>		<i>See Field notes</i>	
	<i>D</i>	<i>Stone m</i>	<i>D</i>		<i>Elm</i>	<i>10</i>	<i>N 3 1/2 E</i>	<i>19</i>
					<i>old bearing stick</i>			
					<i>do</i>	<i>6</i>	<i>S 57 1/2 W</i>	<i>35</i>
<i>10.42 chains N of</i> <i>10.40 chains N of</i>	<i>D</i>	<i>Stone</i>			<i>ash</i>	<i>10</i>	<i>S 61 E</i>	<i>11</i>
					<i>do</i>	<i>12</i>	<i>N 13 E</i>	<i>3</i>
	<i>C</i>	<i>stone</i>	<i>like</i>	<i>C</i>	<i>ash</i>	<i>18</i>	<i>S 41 W</i>	<i>33</i>
<i>10.42 chains N of</i> <i>10.40 chains N of</i>	<i>X</i>	<i>Stone</i>			<i>Hickory</i>	<i>10</i>	<i>S 4 1/2 W</i>	<i>37</i>
	<i>Y</i>	<i>Stone</i>			<i>Stone</i>		<i>S 60 1/2 E</i>	<i>21</i>
					<i>B oak</i>	<i>20</i>	<i>S 77 E</i>	<i>26</i>
					<i>do</i>	<i>14</i>	<i>S 77 1/2 W</i>	<i>45</i>
<i>line 19 #1877 Sugar 886</i>								

Record of Surveys in Shelby County, Indiana.

 Section *B*

 Township *13*

 North, Range *7*

 East. *25*

Date, Intermediate Corners, &c., &c.	Corners.	Stone, Mark, &c.	Acres.	Hnd.	Bearings, Trees, &c.	Diam.	Courses.	Dist.
<i>No date known</i>	<i>B</i>				<i>Calu</i>	<i>14</i>	<i>N 77° W</i>	<i>40</i>
	<i>M</i>				<i>Hickory</i>	<i>10</i>	<i>N 75° E</i>	<i>51</i>
	<i>N</i>				<i>Beech</i>	<i>10</i>	<i>N 33° W</i>	<i>14</i>
	<i>O</i>				<i>do</i>	<i>16</i>	<i>N 55° W</i>	<i>22</i>
	<i>S</i>				<i>do</i>	<i>17</i>	<i>N 60° W</i>	<i>17</i>
	<i>U</i>				<i>do</i>	<i>10</i>	<i>N 5° E</i>	<i>23</i>
	<i>T</i>	<i>Stone</i>			<i>Hickory</i>	<i>20</i>	<i>N 38° E</i>	<i>9</i>
					<i>Sugar</i>	<i>6</i>	<i>W</i>	<i>15</i>
					<i>Beech</i>	<i>8</i>	<i>N 15° W</i>	<i>24</i>
					<i>do</i>	<i>16</i>	<i>N 17° W</i>	<i>15</i>
					<i>do</i>	<i>12</i>	<i>N 13° W</i>	<i>10</i>
					<i>Grinden</i>	<i>10</i>	<i>N 20° E</i>	<i>22</i>
<i>See if this is for S. May the first-1883 G. S. Murphy S.S.C</i>					<i>pro. Handrick & Sumner & Co.</i>			
				<i>Beech</i>		<i>22</i>	<i>N 66 1/2° E</i>	<i>30</i>
					<i>"</i>	<i>24</i>	<i>N 19 3/4° W</i>	<i>53</i>

Record of Surveys in Shelby County, Indiana.

Section 3

Township 13

North, Range 4

East.

Date, Intermediate Corners, &c., &c.	Corners.	Stone, Mark, &c.	Acres.	Hund.	Bearings, Trees, &c.	Diam.	Courses.	Dist.
9 rods and 12 feet East of 9 " " 12 feet East " February 2 th 1900	S	Stone			No-Kit,			
	T	Stake			" "			
	T	Stone			" "			
	M	"			" "			
Millard J. Crawford Surveyor S. C.								

Record of Surveys in Shelby County, Indiana.

Section **4**

Township **13**

North, Range **7**

East. **31**

Date, Intermediate Corners, &c., &c.	Corners.	Stone, Mark, &c.	Acres.	Hnd.	Bearings, Trees, &c.	Diam.	Courses.	Dist.
<p>off of the E. & C. W. R. & C. Co. Cor. of S. W. R. Stones at all the Corners Mar 1864</p>	D	<p>Stones " 30 Limestone</p>	30 30		<p>No Wit " 30 Jno Sargis Surveyor Original Wit. No Wit given No Wit given</p>			13
<p>West half of Sec. 7, Twp 13, R. 7, E. 31 There are stones at all the corners See. Com. Surv. Report to be let. A to P. 27.60 chs found stone at P</p>	P	<p>" S Cross on top</p>			<p>Richard Corris Surveyor all right and original Wit still there. (to P. W.)</p>			
<p>February 20, '06 I found Feb. 20, I set following stones</p>	O				No. Witness			
<p>24.31^{chains} North of 24.70 chains East of above</p>	O	+			<p>Osage No Witness W. H. Isley, Dep. Co. S.</p>	3	S. W	3 1/4

Record of Surveys in Shelby County, Indiana.

Section 5 Township 13 North, Range 7 East.

Date, Intermediate Corners, &c., &c.	Corners.	Stone, Mark, &c.	Acres.	Hund.	Bearings, Trees, &c.	Diam.	Courses.	Dist.
<p>Survey for Hardy Fox & Sylvester Bassett. Sept. 11th. 1906. Set stone 38.26 rds. west of Also set stone to represent point 21.31 chains North and 43.74 rods. East of James E. Norris S. S. Co.</p>	C				No witness			
	Z				"			

Record of Surveys in Shelby County, Indiana.

Section 6 Township 13 North, Range 7 East. 43

Date, Intermediate Corners, &c., &c.	Corners.	Stone, Mark, &c.	Acres.	Haul.	Bearings, Trees, &c.	Diam.	Courses.	Dist.
<i>Mar 9th 1863</i>	M	<i>Boulder</i>			<i>Beech</i>	<i>18</i>	<i>N 45 E</i>	<i>20</i>
					<i>do</i>	<i>18</i>	<i>S 75 W</i>	<i>25</i>
	W	<i>Stone</i>			<i>Ash</i>	<i>12</i>	<i>N 27 W</i>	<i>27</i>
					<i>do</i>	<i>9</i>	<i>S 20 E</i>	<i>25</i>
<i>Sargin Surveyor</i>	L & P	<i>"</i>			<i>Beech</i>	<i>14</i>	<i>S 70 E</i>	<i>29</i>
<i>Nov 1864</i>					<i>do</i>	<i>18</i>	<i>N 60 E</i>	<i>46</i>
	B	<i>"</i>			<i>Ash</i>	<i>20</i>	<i>S 17 W</i>	<i>4</i>
					<i>Beech</i>	<i>14</i>	<i>S 74 E</i>	<i>19</i>
<i>South End of same</i>					<i>Ash</i>	<i>12</i>	<i>N 12 E</i>	<i>23</i>
<i>Sp. Sargin Surveyor</i>					<i>do</i>	<i>18</i>	<i>N 12 W</i>	<i>28</i>
<i>Sept 22nd 1863</i>	C	<i>L Boulder</i>			<i>Ch Nit</i>			
	N	<i>Plenty "</i>			<i>do</i>			
					<i>Richd Morris Surveyor</i>			
<i>Oct 1870</i>	P	<i>Stone</i>			<i>Beech</i>	<i>18</i>	<i>N 60 E</i>	<i>46</i>
<i>var. 5' 35 1/2</i>					<i>do</i>	<i>13</i>	<i>S 75 E</i>	<i>38</i>
<i>C. F. Webster, Deputy Surveyor</i>					<i>Red Oak</i>	<i>24</i>	<i>S 32 1/2 E</i>	<i>50</i>
<i>July 1876</i>	T	<i>Stake</i>			<i>do</i>	<i>18</i>	<i>N 32 1/2 W</i>	<i>64</i>
<i>C. F. Webster, Surveyor</i>								
<p><i>For Plat and description of survey for Dr. Green's A's, see pages 228 & 229 in Plat Book 13-6 Recorded therein by oversight. The survey here referred to should be in Record, Sec. 6-12-7- Webster, Deputy.</i></p>								

Record of Surveys in Shelby County, Indiana.

Section **7** Township **13** North, Range **7** East. **49**

Date, Intermediate Corners, &c., &c.	Corners.	Stone, Mark, &c.	Acres.	Hnd.	Bearings, Trees, &c.	Diam.	Courses.	Dist.	
<i>Acdate given for Sargis Sumner</i>	N				Beech	20	ch	13	
	D				so	24	S 80 E	25	
					so	18	East	17	
					so	12	ch 75 N	25	
<i>Mr Rock Sumner Oct 1870 Wax Needle 3 & 35' East</i>	R				Elm	30	S 75 1/2 N	5	
	T				N-Beech	4	S 4 1/2 E	4	
	O	Limestone Post 4x5x14			Cherry	6	S 4 3/4 N	20	
	P				Beech	10	West	11	
			"			so	18	S 4 N	17
			"			so	18	S 31 N	9
			"			so	14	N 70 E	24
	Y	"			Stone	3x4x10			
<i>V. Sec 6. 330 Chas South Chas F. Webster Sept Surv. April 18th 1900</i>	Z	"			Beech	12	ch 77 E	7	
					so	12	S 20 E	29	
	3	"			Stone				
		"			Wit. Stone East 11 feet, Millard F. Crawford S.S.C.				

Record of Surveys in Shelby County, Indiana.

Section *8* Township *13* North, Range *7* East. *35*

Date, Intermediate Corners, &c., &c.	Corners.	Stone, Mark, &c.	Acres.	Hud.	Bearings, Trees, &c.	Diam.	Courses.	Dist.
<p><i>No date given</i></p>	D				R-Oak	15	S E	14
	G				S Ash	24	N 25 E	6
					so	8	N 30 W	3
					Walnut	12	S 26 E	23
					Beech	6	S 40 W	30
					so	10	N 40 W	41
					S Ash	30	S 76 E	53
					so	8	S 31 E	66
					S Maple	20	N 14 W	39
					S Ash	18	N 38 E	35
<p><i>Former Surveyor</i> <i>See Remarks Page 242.</i> <i>May 20th 1833</i></p>	Q				so	24	S 25 W	72
	X				Sugar	18	Nest	8
	C	Stone			N 70 E			25
	P.K.L	" "			so			39
<p><i>Ed. Winchel Surveyor</i> <i>Mar 6th 1863</i> <i>Feb 18th 1837 - Surging</i> <i>Var Needle 6 East</i></p>	N.Y.V	" "			so			
	W.Z.	" "			so			
	A				so			
	M	Boulder			so			
<p><i>Sick Cornis Surveyor</i></p>	O	Plenty			so			
	R	Lime Stone			so			
	T	S. "			so			
	U	Limestone			so			
					so			
					N 31 1/2 E			
					Same Wood Factory		S 67 E	
					Same In Perry's house		N 77 E	

Record of Surveys in Shelby County, Indiana.

Section *8* Township *13* North, Range *7* East.

Date, Intermediate Corners, &c., &c.	Corners.	Stone, Mark, &c.	Acres.	Hnd.	Bearings, Trees, &c.	Diam.	Courses.	Dist.	
<p><i>Sugan assisted by C. F. Webster</i></p> <p><i>May 6th 1845,</i></p> <p><i>C. F. Webster Surveyor,</i></p>	<i>C</i>	<i>Stone</i>	<i>Set by young</i>		<i>Witness</i>	<i>new wit take</i>			
					<i>Beech</i>	<i>24</i>	<i>S 12 W</i>	<i>28</i>	
					<i>"</i>	<i>24</i>	<i>N 28 E</i>	<i>28</i>	
		<i>D</i>	<i>mark D Stone</i>	<i>Set from old</i>		<i>Witness</i>	<i>New wit take</i>		
					<i>Beech</i>	<i>20</i>	<i>N 30 E</i>	<i>82 1/2</i>	
					<i>Hickory</i>	<i>16</i>	<i>S 65 E</i>	<i>72</i>	
		<i>E</i>	<i>Stake</i>	<i>Perpetuated</i>		<i>Bur Oak</i>	<i>36</i>	<i>N 27 1/2 W</i>	<i>64 1/2</i>
		<i>F</i>	<i>Stake</i>			<i>Hickory</i>	<i>6</i>	<i>S 3 1/2 E</i>	<i>4 1/2</i>
						<i>Red Oak</i>	<i>15</i>	<i>N 24 1/2 E</i>	<i>39 1/2</i>
		<i>Q</i>	<i>+ 1/2 @ Stone 24x4x4</i>			<i>Stone</i>	<i>8</i>	<i>E</i>	<i>35</i>
	<i>R</i>	<i>15x4x4 Lime Stone</i>			<i>Locust</i>	<i>16</i>	<i>N 5 W</i>	<i>81 3/4</i>	
	<i>O</i>	<i>18x6x4</i>			<i>Boulder</i>		<i>N 32° 15' W</i>	<i>35</i>	
	<i>G</i>	<i>Stone</i>							
	<i>D</i>	<i>Stone</i>	<i>Set by Stump</i>		<i>Red Oak</i>	<i>15</i>	<i>S E</i>	<i>14</i>	
					<i>Swamp Ash</i>	<i>gone</i>			

Record of Surveys in Shelby County, Indiana.

Section **9** Township **13** North, Range **7** East. **61**

Date, Intermediate Corners, &c., &c.	Corners.	Stone, Mark, &c.	Acres.	Hud.	Bearings, Trees, &c.	Diam.	Courses.	Dist.	
<i>No date given Nickols Sumeyor</i>	Y				<i>Hickory</i>	12	<i>S 70 N</i>	5	
	C to D		50		<i>R-Road</i>	6	<i>S 64 E</i>	32	
				<i>Hackberry</i>	15	<i>N 73 E</i>	11		
<i>Sargin Sumeyor Jan 8th 1848</i>	N to O	Stone				<i>Beech</i>	6	<i>S 12 E</i>	35
	E				<i>No Nit</i>		<i>Green</i>		
	P				<i>B-Oak</i>	16	<i>N 79 E</i>	25 1/2	
				<i>so</i>	9	<i>N 28 1/2 E</i>	61 1/4		
<i>Rock Sumeyor April 16th 1861</i>	N				<i>Ash</i>	16	<i>N 1 E</i>	67 1/2	
					<i>Oycamore</i>	12	<i>N 82 1/2 N</i>	98 3/4	
	X				<i>Black Walnut</i>	18	<i>N 42 N</i>	11	
<i>Perpetuated from Harris Sumeyor on the Road - 25.37 chus Nest of 16 74.42</i>	Z	Stone			<i>Sugar</i>	14	<i>N 45 E</i>	12	
	S, U, N	Stones, Cross on top			<i>Beech</i>	18	<i>N 20 N</i>	44	
					<i>so</i>	14	<i>S 21 E</i>	53	
	V	Stone Stone				<i>Calum</i>	32	<i>N 73 1/2 E</i>	125
						<i>Box Elder</i>	16	<i>N N</i>	87
<i>witness for</i>					<i>No Nit</i>				
					<i>so</i>		<i>on West Side of road</i>		
					<i>Harris Sumeyor</i>				
							NW SW	50 li 50 li	

June 8 - 1943 Set stone 98' N. of what would be the SE. cor.
of Lot No 5 in the town of Marion. See page 244

Record of Surveys in Shelby County, Indiana.

Section **10** Township **13** North, Range **7** East. **67**

Date, Intermediate Corners, &c., &c.	Corners.	Stone, Mark, &c.	Acres.	Hund.	Bearings, Trees, &c.	Diam.	Courses.	Dist.
<i>Jan 5th 1854</i>	N W	<i>Stone</i>			<i>Sugar</i>	<i>8</i>	<i>N 65° E</i>	<i>29</i>
		<i>"</i>			<i>Beech</i>	<i>14</i>	<i>N 21° W</i>	<i>10</i>
					<i>do</i>	<i>24</i>	<i>S 80° E</i>	<i>20</i>
<i>25 Rods West of</i>	A.P.L. X	<i>Stones</i> <i>lime stone</i>			<i>do Nit</i>		<i>Given</i>	
<i>25 Rods West of</i>	N	<i>Stone</i>			<i>Beech</i>	<i>30</i>	<i>S 21 1/2° W</i>	<i>22</i>
					<i>B-oak</i>	<i>24</i>	<i>N 32 1/2° W</i>	<i>9 3/4</i>
					<i>Beech</i>	<i>15</i>	<i>N 6° E</i>	<i>7</i>
					<i>do</i>	<i>20</i>	<i>S 21° W</i>	<i>9</i>
<i>June 1823</i>	<i>Wit for</i>	Z	<i>stones</i>		<i>Richard Horns Surveyor</i>			
							NW SW	<i>50 1/2</i> <i>50 1/2</i>

Record of Surveys in Shelby County, Indiana.

Section 12 Township 13 North, Range 7 East. 79

Date, Intermediate Corners, &c., &c.	Corners.	Stone, Mark, &c.	Acres.	Hud.	Bearings, Trees, &c.	Diam.	Courses.	Dist.
<p>Mr. Rock - Surveyor Aug 22nd 1866</p>	L Y X				Sycamore 16		S 13 E 32	
					Oak 10		S 34 E 70	
					Sog Mud 4		N 40 E 6	
					Ash 12		N 60 W 10	
					Nalnut 14		West 10	
<p>Rock's Witness</p>	V				Sycamore 36		N 17 W 35 1/4	
					do 30		North 44	
	I W X N O	Stone			Sugar 12		S 82 1/2 W 12	
		"			do Nit		Available	
		"			Nalnut 14		West 27	
<p>Mr. Capt. Hummer Oct 9th 1879. var 5th E 1/2 N 3/2 off of North End E 1/2 S.E. qm</p> <p>15 4/10 Chains S of 15 4/10 " S of Chas. H. Webster s.s.c.</p> <p>Dec. 2 1941 Wit. for</p>	V	Large Boulder	30		B-Oak 18		S 76 W 26 1/2	
					R-Oak 18		N 21 E 27 3/4	
					Large Boulder		South 162	
					L to M is		19 30 chains	
		I M	Stone do			Large Boulder		West 05
	A	Stones			Stones		N.E. S.E. } 2 rods	

Record of Surveys in Shelby County, Indiana.

Section **13** Township **13** North, Range **7** East. **73**

Date, Intermediate Corners, &c., &c.	Corners.	Stone, Mark, &c.	Acres.	Hand.	Bearings, Trees, &c.	Diam.	Courses.	Dist.
<p>Oct 11th 1847</p> <p>H. H. Miller Surveyor Corners Established by Former Surveyor Oct 8th 1879.</p> <p>1 1/2 40 Chas South of 1 1/2 40 Chas South of Co. B Webster Surveyor, &c.</p>	<p>M</p> <p>N</p> <p>O</p> <p>L.P.X.</p> <p>C.</p> <p>M</p> <p>I</p>	<p>Boulder - (Keng)</p> <p>Limestone</p> <p>Boulders</p> <p>"</p> <p>Stone</p> <p>"</p>	<p></p> <p></p> <p></p> <p></p> <p>30</p> <p></p>	<p></p> <p></p> <p></p> <p></p> <p></p> <p></p>	<p>Sugar</p> <p>Beech</p> <p>do.</p> <p>No Nit</p> <p>No Nit</p> <p>do</p> <p>Large Boulder N + West</p> <p>no nit.</p>	<p>14 1/2 39 1/2 N</p> <p>10 1/2 82 1/2 E</p> <p>24 1/2 N</p> <p>Available</p>	<p>16</p> <p>7</p> <p>3</p> <p>Available</p>	<p></p> <p></p> <p></p> <p></p> <p>3</p> <p></p>

Record of Surveys in Shelby County, Indiana.

Section **14** Township **13** North, Range **7** East. **91**

Date, Intermediate Corners, &c., &c.	Corners.	Stone, Mark, &c.	Acres.	Haud.	Bearings, Trees, &c.	Diam.	Courses.	Dist.
<p>41⁵/₁₀ Rods North of Rocks notes page 76-33 16³/₄ Rods to Middle of Section Jan 6th 1853. Gnr. Sargin Surveyor</p>	X				Beech	20	N 68 W	19
					So	11	S 68 E	23
	N				Ash	8	N 74 E	21
					So	10	S 38 W	34
	M				H. Cherry	12	N 41 W	15
<p>April 30th 1862</p>	P	Boulder (Kong)			Field note			
	O	P 14 x 11 15 Boulder			Beech	20	N 37 E	20
<p>Sick Morris Surveyor 17.65 chus South of 17.65 chus South of April 1877. Co. 3 Helster S. & Co. Feb. 7th 1898. (Bar 3 1/2*)</p>	S	"			Bur Oak	12	N 69 E	27
	C	Stone			White Oak	36	S 46 E	24
	B	"	no mt		Ash	2	N E	4 1/2
<p>Z to P 40.32 ch. Survey for Jacob Garling Samuel, Booker, James Linville, Et. al.</p>	Z	Stone by former Surveyor.						
	Q	Boulder			Hickory	15	North	11
					Ash	15	S 5 E	7
C. F. Webster. S. & Co.								

Record of Surveys in Shelby County, Indiana.

Section **13** Township **13** North, Range **7** East. **97**

Date, Intermediate Corners, &c., &c.	Corners.	Stone, Mark, &c.	Acres.	Hnd.	Bearings, Trees, &c.	Diam.	Courses.	Dist.
<i>As date given.</i>	M	Boulders (Ging)			Beech	27	East	7 1/2
	O	"			so	24	N 38 W	30
	H	"			so	10	N 12 E	30
<i>Former Surveyor Feb 5th 1869</i>	I	"			White so	6	N 63 E	36 1/2
	N	"			No Nil			
	O	"			so			
	N	"			so			
	O	"			so			
	O to P	"			so			
<i>13 3/4 Rods East of</i>	N	Same Limestone			so			
<i>12 29 Chus South of</i>	X	"			so			
<i>14 02 Chus North of</i>	M	Boulder			so			
<i>12 21 Chus South of</i>	T	Limestone			so			
<i>7 32 Chus South</i>	of Same	"			so			
<i>14 09 Chus North</i>	W	"			Beech	12	N 75 E	12
<i>6 47 Chus North</i>	of Same	"						
	U	Boulder			Hickory	12	North	10
<i>7 32 Chus South</i>	of Same	"			Beech	12	N 5 W	20
<i>6 39 Chus North</i>	V	"			Hickory	15	N 75 W	23
<i>M. K. Miller - Surveyor</i>	Y	L-stone			No Nil			

Record of Surveys in Shelby County, Indiana.

Section 15 Township 13 North, Range 7 East.

Date, Intermediate Corners, &c., &c.	Corners.	Stone, Mark, &c.	Acres.	Hund.	Bearings, Trees, &c.	Diam.	Courses.	Dist.
Sept 15 th 1880. 6.16 1/2 Chms N of	V	Stone			Swamp Ash	15	S 62 N	22
	W	"			Red Oak	18	N 54 E	37 1/4
6.16 1/2 Chms N of	N	Grine "						
13.56 Chms North of	X	"						
13.56 Chms North of	W	"						
6. F. Webster Survey &c. October, 1898. (var 3' x 30')								
Reset found stone B. out of place. At C 41.58 ch	IB	Relocated same as Wit.						
June 1923 Wit. for	E				C. F. Webster, S.S.C.			
May 1941 . . .	Z				stones		SW NW	50 ft 50 ft
					stones		SW SE	} 2 ft.

Record of Surveys in Shelby County, Indiana.

Section 16 Township 15 North, Range 7 East. 103

Date, Intermediate Corners, &c., &c.	Corners.	Stone, Mark, &c.	Acres.	Inud.	Bearings, Trees, &c.	Diam.	Courses.	Dist.
	H				Beech	27	N 33 W	9
	K				Buckeye	9	S 70 E	34
					Beech	14	S 56 W	31
					do	10	North	20
Nickols, Surveyor	N				do	24	N 16 W	23
Sept-18 th 1850	Z				Beech	20	N 83 E	73
					Ash	20	N 85 W	76
6 30 Chus North of	Q				Cherry	12	S 40 W	39
13 70 Chus South of	N				Buckeye	12	S 40 W	39
					Hickory	10	N 62 W	81
19 50 Chus West of above					Sugar	24	S 15 W	32
Same " of	N	Stake			No Mt			
J. A. Elliott, Surveyor	Q. K	Stones			No Mt		Given	
Oct 20 th 1857	I. S.	"			do			
Jno. Sargin Surveyor	P.	lime stone			do		available	
8 7 Rods East of same		"			Locust	5	S 57 E	19
5 5 Rods N. of 78 Rods N. of	N	"			Elliotts Mt			
16 8 Rods South of same		"			Cherry	10	S 68 W	10
5 5 Rods South of same		"			Walnut	8	S 40 W	24
5 4 1/2 Rods North of 1/2 of	Z				"	"	"	"
	H to C	"			Bur Oak	12	N 67 E	7
					Ash			
					W. H. Miller Surveyor			

Record of Surveys in Shelby County, Indiana.

Section 16 Township 13 North, Range 7 East.

Date, Intermediate Corners, &c., &c.	Corners.	Stone, Mark, &c.	Acres.	Hurd.	Bearings, Trees, &c.	Diam	Courses.	Dist.
<p>Jan^y 21st 1876 Perpetuals</p> <p>April 22nd 1889. var 1st 20" N.S.</p> <p style="margin-left: 150px;">" 3rd 15" E.H.</p>	E.	Long Lime Stone marked E, 16. Calm				50	N 73 1/2 E	125
		E, 16. New Mt. Sycamore				60	N 87 1/4 E	84
		" " " "				50	S 26 1/4 E	43 1/2
<p>31 3/4 Chms West of</p> <p>40 Rods South of 3 3/4 Chms West of last named</p> <p>Corner. These two last named corners are in the Centre line of the Shellyville & Mammoth</p> <p>Darupike road.</p>	C.	Lime Stone marked +			Sugar	4	N 80 1/4 W	50
<p>40 Rods South of</p> <p>The Bur Oak is N.H. to 1/2 of H to C, also,</p> <p>Miller Recorded it as an Ash tree</p>	C.	Lime Stone marked +			Bur Oak	18	S 61 E	7 1/4
<p>13 1/2 Chms South of</p>	N	Lime Stone marked +			Perpetuals, Hickory	16	N 62 W	81. Ellipse
					New Mt Walnut	18	N 33 1/2 W	22 1/2
<p>60 Rods South of</p> <p style="margin-left: 20px;">99'</p>	E.	Long Sand Stone, in River, marked +			Sycamore	60	North East 92	
					do	60	South East 87.	
<p>122 Rods South of</p> <p>Chas. F. Webster Deputy, C.S.</p> <p>for Thomas Finley, S.S.C.</p>	E.	Lime Stone marked +			In Darupike road on Sec. line,			
					This corner is 99 9/16 Chms North of P.			
					659.67			
wit for	V.				stones		S.E. S.W.	} 50 li.

Record of Surveys in Shelby County, Indiana.

Section **17** Township **13** North, Range **7** East. **109**

Date, Intermediate Corners, &c., &c.	Corners.	Stone, Mark, &c.	Acres.	Hund.	Bearings, Trees, &c.	Diam.	Courses.	Dist.
Coff of the North End	C to N		78	41	Sugar	12	East	9
	B to M		"	"	So	20	N 72 W	17
J. Kieckhefer - Surveyor	M		"	"	N-Beech	9	S 42 W	15
Sept 15th 1850	N				Sugar	8	S 40 E	23
	M				elm	18	S 52 E	27
	N				So	30	N 89 W	25
7.30 Chas South of	M				ash	10	S 79 W	49
J. M. Elliott Surveyor	S	Stone			Walnut	12	S 33 W	30
Dec 25th 1860	M				Beech	16	S 18 W	4
Richard Harris - Surveyor	D	Lime Stone			So	10	S 51 E	23
Mar 22nd 1867	Z	Lime Stone			N. Hickory	9	S 11 E	16
Mar 26th 1870	X	Lime Stone			N-ash	13	N 39 W	79 1/2
Jun 12 1872 J. Dugan '85	S S	Book stake			Red Lead	8	S 4 1/2 W	36
					No Nit			

N. H. Miller Surveyor
No Nit
C. P. Webster Sept. Surveyor
Buckeye 8 N 34 W 10
R. H. Haw 12 S 4 E 44
See old mit.

Record of Surveys in Shelby County, Indiana.

Section **17** Township **13** North, Range **7** East.

Date, Intermediate Corners, &c., &c.	Corners.	Stone, Mark, &c.	Acres.	Hund.	Bearings, Trees, &c.	Diam.	Courses.	Dist.
<p>May 9, 1895, Survey for Bassett, vet Bassett & Morgan Robbins, Set Stone by Elliotts Witness Ash, A to P 40.66 Chns. Survey made by W. H. Isley, Lehas, F. Webster Surveyor, S. Co. On March 29, '04 I set the following corner: 19 $\frac{67}{100}$ Chains South of</p>	N	Elliotts Corner			Ash		10 + S 79 N	49
		Lime Stone Mark +			Lime Stone		South	62
					Samuel P. Harris, S.S.C. by W. H. Isley, Dep.			
<p>On Feb. 12, '06, I set stones ^{corners} as follows: 20.24 chains East and $\frac{16}{100}$ Chains North of 2.25 chains West of above 6. chains South of second above 2.25 chains West of last "</p>	Q	Large Post Stratified lime Stump + Boulder + mark + Large Boulder			Boulder + " " Beech Tree	30	N. 70 W	44
					W. H. Isley Dep. S.S.C.			

Record of Surveys in Shelby County, Indiana.

Section *18* Township *13* North, Range *7* East. *13*

Date, Intermediate Corners, &c., &c.	Corners.	Stone, Mark, &c.	Acres.	Bound.	Bearings, Trees, &c.	Diam.	Courses.	Dist.
	X				Beech	24	N 2 E	16
	N				do	6	N 65 E	14
	Y				Ash	18	East	20
	O				Beech	12	N 45 N	—
	P				Hickory	6	N 30 N	7
	O				Beech	10	South	15
	P				do	24	N 80 E	13
	O				do	18	N 70 N	12
Rock-Sumeyor	P				do	12	N 76 E	13
	O				do	16	N 9 N	17
Sept. 10th 1860 18.53 Chas North	O				Ash	16	N 53 E	6
of	P				Beech	10	N 52 N	2 1/2
Same North of	P				N-Elm	30	N 28 E	22
Richard Norris Sumeyor	O				Beech	12	N 45 E	1
Sumey to Cornock (former Surkey)	O	Stone			Beech	12	N 70 1/2 E	10
	N				do	13	S 45 1/2 N	77
Rock's Corner (10 Chas West)	N	Stake			do	18	S 20 N	36
of this Corner, 1875,	X				do	8	N 41 N	45 1/2
G. B. Webster Sumeyor,	Y	Stone			Stone		North	35
10.72 Chains South of	O	"			Oak	15	N 43 1/2 N	93
	O	Stake			Beech	18	S 42 1/2 N	41 1/2
					do	10	N 63 1/2 N	38

Record of Surveys in Shelby County, Indiana.

133

Section **21** Township **18** North, Range **7** East.

Date, Intermediate Corners, &c., &c.	Corners.	Stone, Mark, &c.	Acres.	Hund.	Bearings, Trees, &c.	Diam.	Courses.	Dist.
<i>No date given</i>	F				Buckeye	10	N 38 E	68
					Beech	7	S 35 W	90
	W to M				Maple	9	N 40 E	12
					Hickory	24	S 73 W	18
<i>for Nichols Surveyor Sept 6th 1850</i>								
<i>60 Rods off of N. End. of C. & C. gr Var. E. N. 52 30' N. S. 6 1/2</i>	M	Boulder.			Beech	6	S 50 W	13
					do	12	S 19 E	24
<i>J. M. Elliott - Surveyor Oct 13th 1839</i>	Z				Hackberry	10	N 31 W	37 1/2
					Box Elder	12	S 45 E	37 1/2
	P	stone			No Mt		Available	
	Y.V.O	stones			do			
<i>N. E. of 8 rods there are stone ^{corners} all the Oct 20th 1857</i>	I				Ed. Michael Surveyor			
					Beech	12	S 39 W	30
					Sugar	8	N 10 E	19
<i>Nov 4th 1862</i>	M	Boulder			Elliotts Mt		above	
<i>60 22 Rods South</i>	<i>of above</i>	"			Beech	9	N 79 E	33 1/2
<i>100 41 Rods South</i>	<i>of</i>	"			do	12	S 32 W	59
	V				do	8	N 87 1/2 W	43 1/2
					White Elm	12	N 11 E	12
<i>July 14. 1885</i>	N	Stone			Richardson's Surveyor			
<i>Will. H. Isley - surveyor</i>					Beech	18	S 30 W	51
					Sugar	16	N 7 E	67 1/2

Record of Surveys in Shelby County, Indiana.

Section 21 Township 18 North, Range 7 East.

Date, Intermediate Corners, &c., &c.	Corners.	Stone, Mark, &c.	Acres.	Hund.	Bearings, Trees, &c.	Diam.	Courses.	Dist.
March 10th 1887.	F	lime stone			Maple	4 1/2	S 43 1/2 N	83
	I	-- --			--	4	S 39 1/2 E	4
	I				Blue Ash	15	N 67 E	46
Finley. Surveyor.	C				Sugar Walnut.	17	N 24 E	21

Record of Surveys in Shelby County, Indiana.

139

Section **22**

Township **13**

North, Range **7**

East.

Date, Intermediate Corners, &c., &c.	Corners.	Stone, Mark, &c.	Acres.	Hund.	Bearings, Trees, &c.	Diam.	Courses.	Dist.
	T				Beech	24	Nest	8
					do	8	N 20 E	18
	W				Sugar	16	N 30 W	15
					Poplar	4	N 40 E	14
Mr. Sargis Surveyor Sept 6th 1850	D	A large stump in woods.			Sugar	18	S 80 W	15
J. M. Elliott Surveyor Sept 30th 1862	A	Large Boulder			Beech	16	S 59 E	32
Storris Surveyor	R				Original	Nit	Storris. S. S. E.	
Mr. Sargis Surveyor Nov 3rd 1862	C.	Long "			Beech	10	S 29 W	21
					do	6	S 75 W	15
	H				Original	Nit		
	N	Sandy "			Maple		N 77 E	7
This corner is indicated by a RR Spike driven in tree,	S	" "			No Nit			
	G				Hickory	16	N 24 W	42 1/2
	O				Bur Oak	40	S 81 1/2 W	88
	above				Y-Ash	12	N 32 W	41
					Hickory	8	N 1 E	68
	G	Large "			No Nit			
	O	" "			do			
	above	" "			do			
	D				do			
On Field 20.8 Rods E of. (in road) 32.14 Rods S of above Same South of 20.9 Rods East of in Road	Y	Small " Gum Stone			Beech	12	N 40 W	43 1/2
					White do	24	S 46 W	4
					No Nit			

Richard Storris Surveyor

140

Record of Surveys in Shelby County, Indiana.

Section **22** Township **13** North, Range **7** East.

Date, Intermediate Corners, &c., &c.	Corners.	Stone, Mark, &c.	Acres.	Hund.	Bearings, Trees, &c.	Diam.	Courses.	Dist.
Dec 12 th 1862	V	Boulder			ash	20	S 17 1/2 N 62 1/2	
Dup. by Pack. &c. &c. Stamp of Original Not found.	II	Large Boulder			Hackberry	18	N 20 1/2 N 11 1/2	
					Hackberry	18	N 18 N 69 1/2	
					do	18	S 74 N 64	
	U	Sand "			Beech	20	S 45 N 3	
					do	16	N 26 N 98	
					do	14	N 86 E 88 1/2	
Forris, Surveyor Jerry Dugan & sb March 5 th 1877	S	Stone			ash	15	N 74 1/2 N 33 1/2	
					Hackberry	12	N 7 E 50 1/2	
wit for	A				Stones		SE. SW.	50 1/2

Record of Surveys in Shelby County, Indiana.

145

Section **23**

Township **13**

North, Range **7**

East.

Date, Intermediate Corners, &c., &c.	Corners.	Stone, Mark, &c.	Acres.	Hood.	Bearings, Trees, &c.	Diam.	Courses.	Dist.
	M				Ash	11	S 1/2 N	13
	N				Cherry	16	N 3/4 E	30
					Beech	30	N 7/8 E	7 1/2
					Ash	5	S 3/4 N	4 1/2
Sept 7th 1853 - Off of Co of St & Cr East End of Line West Same		Stone	22.25		No Pit			
Sept 1853 - Sargin Surveyor	R				Calum	18	S 82 E	125
					Beech	10	S 29 N	21
					No Pit	6	S 75 N	15
	Z	Stone			No Pit		Line	
Oct 13th 1864 - 6 Rods W of	O	Boulder			No			
6 Rods N of	R	Line Stone			Burr Oak	30	S 50 E	6 1/2
					Richard Storn's Surveyor			
6 Rods W of	O	Stone mark 7			Stone		N	14
					do		E	18
6 Rods W of	R	Stone mark 6+13			do		W	24 1/2
July 2nd 1875 J. J. Sugar Surveyor					do		E	26 1/2
		<u>over.</u>						

Record of Surveys in Shelby County, Indiana.

Section **23** Township **13** North, Range **7** East.

~~Var 3 1/2 * E & W 89 *~~

Date, Intermediate Corners, &c., &c.	Corners.	Stone, Mark, &c.	Acres.	Hund.	Bearings, Trees, &c.	Diam.	Courses.	Dist.
Survey for Jacob. Spearling Samuel. Hearshel. Geo. Gamier Samuel. Booher. Et. al. D to E 20.65 ch. A to D 40.78 ch. P to E 40.60 ch. P to O 20.90 ch.	M	Boulder			Oak	24	East	30
	G	Large Boulder			Buch	15	North	1 1/2
	F	Stone			Hickory	15	North	8
	P	Stone	By former Surveyor					
C. F. Webster, S. L. C.								
Survey for DeMott & Gaines Jan. 28 & 29 1947								
Set stone for I 41.88 ch. E of G & 20.31 ch N. of M.								
Set flat Boulder on line 9 li. W. of W. line of Public Highway								
Geo. E. Olman s.s.c. and 7.86 ch. W. of stone set for I								

Record of Surveys in Shelby County, Indiana.

131

Section **24** Township **15ⁿ** North, Range **7^w** East.

Date, Intermediate Corners, &c., &c.	Corners.	Stone, Mark, &c.	Acres.	Hund.	Bearings, Trees, &c.	Diam.	Courses.	Dist.
1864. Mrs. J. J. Sumner Aug 18 th 1867 ^c	by L to M				Ash	12	S 34 E	36
					Beech	15	S 15 W	28
	by V to W				do	12	N 60 W	18
		N			Ash	4	East	10
		O			Beech	12	NE	15
					do	14	SE	27
		E	Stone		Poplar	24	West	5 1/2
					Beech	12	North	37 1/2
		A	"		Calm	7	N 2 1/2 E	26
					Beech	5	N 77 E	15
		P	"		Ash	22	N 60 E	20
		B	"		Beech	14	S 60 E	10
					No Nit			
		D	"		Beech	10	N 72 E	35
					do	13	S 33 1/2 E	40
	I	"		do	8	N 50 W	4 3/4	
				do	6	N 87 1/2 E	4 3/4	
				do	11	N 78 E	13 3/4	
				Calm	10	N 33 1/4 E	20 7	
	L	"		Hickory	14	S 64 1/2 E	29	
				Beech	14	N 57 W	33	
				do	14	N 68 E	30	
	K	"		Hickory	12	N 38 W	13 3/4	
				Beech	22	N 23 1/2 E	40	

32. Record of Surveys in Shelby County, Indiana.

Section **24** Township **13** North, Range **7** East. 2nd

Date, Intermediate Corners, &c., &c.	Corners.	Stone, Mark, &c.	Acres.	Hund.	Bearings, Trees, &c.	Diam.	Courses.	Dist.
	X W	Stone			No Nit		Spire	
					Sugar	13	S 31 1/2 E	56
					Beech	12	S 80 1/2 E	76 1/2
	F				Sugar	10	S 43 1/2 E	2 1/2
					Beech	10	S 87 1/2 W	20
March 1874,	1/2 of C to D.	Stone			Beech	10	S 19 1/2 E	27
					So	12	S 41 W	44
13.66 1/2 chs West of	B				1 So	7	East	22
					So	18	S 22 1/2 W	75
	1/2 of N to O.	Boulder			Stone		N 26 1/2 W	22 1/2
					Boulder		East	8 1/2
1.00 chain South of 1/2 of A to O. to lot 3.		Stone			Stone		N 12 1/2 E	30
					So		S 14 E	40
13.72 chs West of	II	Stone			Stone		North	40
					So		West	100
1.00 chain West of last named corner.		Stone			So		S 89 E	38
1.00 chain South.					So		North	100
14.87 chains West of G. F. Webster, Surveyor	M	Stone			Beech	18	N 68 1/2 E	21

Record of Surveys in Shelby County, Indiana.

157

Section **23**

Township **13**

North, Range **7**

East. *2nd P.M.*

Date, Intermediate Corners, &c., &c.	Corners.	Stone, Mark, &c.	Acres.	Hund.	Bearings, Trees, &c.	Diam.	Courses.	Dist.
<i>Mar 20th 1868 - See Field Notes.</i>	P	Stone			No Nit		Given	
	L				Original Nit			
	M	Boulder			Beech	10	S 21 W 9	
	C.				So	4	S 20 W 10 1/2	
					Red Oak	36	S 31 E 22	
				Poplar	30	S 53 W 30		
	S.	Stone			No Nit		Given	
	V	"			Original Nit			
<i>4 1/2 Rods N 7/8 1/3 Rods E of</i>	Same	"			Beech		S 32 E 26	
	A	"			Original Nit			
<i>1/2 of</i>	V to W	"			No Nit		Given	
<i>4 1/2 Rods West of</i>	V	"			So			

W. McMiller Surveyor

Record of Surveys in Shelby County, Indiana.

Section *25* Township *13* North, Range *7* East.

Date, Intermediate Corners, &c., &c.	Corners.	Stone, Mark, &c.	Acres.	Bound.	Bearings, Trees, &c.	Diam.	Courses.	Dist.
<i>by Rock</i>	<i>P</i>	<i>Stone</i>			<i>No wit</i>			
	<i>L</i>				<i>original wit</i>		<i>See field notes</i>	
	<i>M</i>	<i>Boulder</i>			<i>Beech</i>	<i>10</i>	<i>S 21 W</i>	<i>9</i>
					<i>do</i>	<i>4</i>	<i>N 20 W</i>	<i>10 1/2</i>
<i>46 Rods W and 146 1/3 Rods N of</i>	<i>V</i>				<i>do</i>		<i>S 52 E</i>	<i>26</i>
	<i>S</i>	<i>Boulder</i>			<i>mark S 25</i>			
	<i>V</i>	"			<i>original wit</i>			
	<i>A</i>	"			<i>original wit</i>			
<i>46 Rods West of March 20+21st 1868 W. H. Miller survey The person who wrote this and then marked it out had better practice on a slate awhile. This is little less than mutilating the public Records of the County.</i>	<i>V</i>	<i>marked 1/2</i>						
	<i>V</i>	"						
	<i>N</i>	<i>" mark N</i>			<i>Sugar</i>	<i>16</i>	<i>S 76 1/2 E</i>	<i>88</i>
	<i>H</i>	<i>" " J</i>			<i>Ash</i>	<i>16</i>	<i>N 71 E</i>	<i>73</i>
	<i>H</i>	<i>Stone mark H</i>			<i>Beech</i>	<i>18</i>	<i>N 54 W 66</i>	
	<i>C</i>	<i>" mark C</i>			<i>do</i>	<i>16</i>	<i>N 21 1/2 W 90</i>	
	<i>G</i>	<i>Stone mark G</i>			<i>Stone mk wit E</i>			<i>25-</i>
	<i>O</i>				<i>do mk wit W</i>			<i>26</i>
	<i>O</i>	<i>Stone m O</i>			<i>Stone ma wit N 45 W</i>			<i>31</i>

Record of Surveys in Shelby County, Indiana.

163

Prickland's Section *26* Township *13* North, Range *7* East. *2nd P.A.*

Date, Intermediate Corners, &c., &c.	Corners.	Stone, Mark, &c.	Acres.	Hnd.	Bearings, Trees, &c.	Diam.	Courses.	Dist.
<i>Mrs. Jargin Sumner</i>	<i>M</i>				<i>Buckeye</i>	<i>5 8</i>		<i>11</i>
	<i>B</i>				<i>Beech</i>	<i>18</i>	<i>N 83 E</i>	<i>12</i>
					<i>Oak</i>	<i>15</i>	<i>N 49 1/2 E</i>	<i>28 3/4</i>
	<i>O</i>				<i>Elm</i>	<i>30</i>	<i>N 62 1/2 N</i>	<i>51 1/4</i>
					<i>Ash</i>	<i>8</i>	<i>N 86 E</i>	<i>6 1/2</i>
	<i>V</i>				<i>so</i>	<i>15</i>	<i>N 33 1/2 N</i>	<i>36 1/2</i>
					<i>Nut</i>	<i>12</i>	<i>S 42 1/2 N</i>	<i>30</i>
	<i>W</i>				<i>Beech</i>	<i>16</i>	<i>N 85 E</i>	<i>35</i>
					<i>Elm</i>	<i>16</i>	<i>S 34 1/2 E</i>	<i>56 1/2</i>
	<i>X</i>				<i>so</i>	<i>20</i>	<i>S 25 1/2 N</i>	<i>45 1/2</i>
<i>Beech</i>					<i>12</i>	<i>N 32 E</i>	<i>35 1/2</i>	
<i>Y</i>				<i>Elm</i>	<i>12</i>	<i>S 6 1/2 N</i>	<i>12</i>	
				<i>Beech</i>		<i>S 31 1/2 E</i>	<i>32</i>	
<i>Mr. Robt. Sumner</i> <i>Aug 1869</i> <i>See Sec 22, W.</i>	<i>C</i>	<i>Stone</i>			<i>No Nit</i>		<i>Available</i>	
	<i>E</i>	<i>"</i>			<i>by Arnis</i>			
	<i>N</i>	<i>"</i>			<i>Ash</i>	<i>6</i>	<i>N 49 E</i>	<i>40</i>
<i>Is. Sec 27, Arnis. Sumner</i> <i>W. H. Miller Sumner</i>	<i>D</i>	<i>"</i>			<i>Beech</i>	<i>12</i>	<i>N 32 1/2 N</i>	<i>56 1/4</i>
					<i>Original Nit</i>			
				<i>New Nit</i>	<i>Beech</i>	<i>24</i>	<i>N 9 E</i>	<i>33</i>

Record of Surveys in Shelby County, Indiana.

169

Section **27**

Township **13**

North, Range **7**

East.

Date, Intermediate Corners, &c., &c.	Corners.	Stone, Mark, &c.	Acres.	Hund.	Bearings, Trees, &c.	Diam.	Courses.	Dist.
	W				elm	11	S ^{25 1/2} 70 E	28 3/4
	X				Buckeye	12	S 20 E	18
					Maple	12	S 60 E	19
Kirkals - Surveyor	B				Sycamore	18	N 55 W	16
1854, or 50					Sugar	16	S 60 W	38
West End is.	N				Hickory	4	S 83 W	36
					Mulberry	8	N 76 W	17
Spur Surpin - Surveyor	M	Quarystone			Sugar	14	North	24
Mar 3rd 1852					Beech	10	S 20 E	73
	O				Sugar	24	N 15 W	100
					Oak	24	South	4
					Lime	10	West	3 1/2
J. M. Elliott - Surveyor	Y				Hickory	12	N 10 W	8
					Sugar	18	N 34 E	46
Dec 12th 1862	L				Beech	24	N 9 E	33
Richard Norris - Surveyor					Original Nit			
G. F. Webster, Surveyor,	C	Boulder			Pine Oak	15	S 29 1/4 E	97
1873					Stone		S 21 W	92 3/4
	D	Lime Stone			Stone		N 1/4 E	90
					Do		S 3/4 W	41
11 62 this West of	N	"			Red-Oak	12	N 79 E	101
40 Rods North of last named Corner "					Swamp Ash	8	N 88 W	40
{ 40 Rods North of N. and					White Oak	12	S 27 E	20
34 links West of Centre of Pike.		Stone						

Record of Surveys in Shelby County, Indiana.

Section **27**

Township **13**

North, Range **7**

East.

Date, Intermediate Corners, &c., &c.	Corners.	Stone, Mark, &c.	Acres.	Und.	Bearings, Trees, &c.	Diam.	Courses.	Dist.
<i>NW 7th to 10th 1877</i> <i>Jerem Egan ssc</i>	X				<i>Ash</i>	<i>18</i>	<i>S 51¹/₂ W</i>	<i>40</i>
	I	<i>Stone</i>			<i>Elm</i>	<i>24</i>	<i>N 11 E</i>	<i>53</i>
<i>improves Partition</i> <i>Feb 9th to 10th 1853</i>	K	<i>"</i>			<i>W. cherry</i>	<i>12</i>	<i>S 65 E</i>	<i>84 1/2</i>
	M	<i>"</i>			<i>Stone</i>		<i>N 6 1/2 W</i>	<i>77 3/4</i>
<i>C. 100</i> <i>Ch² north of</i>	L	<i>"</i>			<i>Beech</i>	<i>24</i>	<i>N 52 W</i>	<i>35</i>
<i>C. 39 1/2</i> <i>" south "</i>	I	<i>"</i>			<i>"</i>	<i>18</i>	<i>S 70 E</i>	<i>62 1/2</i>
<i>C. 98 1/2</i> <i>" north "</i>	L	<i>"</i>			<i>no writ</i>			
<i>C. 39 1/2</i> <i>" south "</i>	K	<i>"</i>			<i>Beech</i>	<i>18</i>	<i>S 72 1/4 W</i>	<i>28 1/2</i>
<i>Geo. S. Murphy & C. C. S</i>					<i>Ash</i>	<i>12</i>	<i>S 33 W</i>	<i>57 3/4</i>
					<i>Beech</i>	<i>18</i>	<i>N 54 3/4 W</i>	<i>33</i>
					<i>"</i>	<i>"</i>	<i>S 49 1/2 E</i>	<i>24</i>
AUG. 31, 1955 <i>Robert Smith suw. Sh. Co.</i>	N	LIMESTONE			<i>NW COR. CONC. FORM</i>		<i>S 45 E</i>	<i>50.6'</i>
					<i>CONC. POST</i>		<i>N 20° W</i>	<i>75.1'</i>
					<i>CONC. POST</i>		<i>N 60° W</i>	<i>84.2'</i>

Record of Surveys in Shelby County, Indiana.

175

Section **28**

Township **13**

North, Range **7**

East.

Date, Intermediate Corners, &c., &c.	Corners.	Stone, Mark, &c.	Acres.	Hund.	Bearings, Trees, &c.	Diam.	Courses.	Dist.
Aug 31st 1854 See old Book Page 26.	II				Beech	14	East	13
					do	20	N 5 E	23
	M				Sycamore	4	N 30 E	21
					Washed out Ash	4	S 18 W	14
Jno. Dargin Surveyor Sept 7th 1868.	B	Stone			No Wit		Cinner	
	A				Beech	10	S 38 W	42
					do	12	N 65 W	12
See Remarks Page 242. 4 Rods East of	N	Boulder			No Wit		Available	
	O	"			Calm	12	N 31 W	33
					Ash	8	S 56 E	46
79 2/3 Rods South of	Same	"			Sugar	24	North	14
40 " " "	Same	"			Beech	4	S 65 W	23
					Calm	6	N 25 W	28
79 2/3 Rods S + 40 1/3 Rods E. of	Same	"			Beech	12	N 86 W	32
39 2/3 Rods West of	X	"			do	6	N 83 W	21 1/2
	Y	"			Oak	6	N 30 W	16
See D. See 33					Mulberry	18	N 78 E	21
W. H. Miller Surveyor 39 2/3 Rods West of March 8th 1880. to B. Webster & Co	X	Gine Stone Set by above Witness						

Record of Surveys in Shelby County, Indiana.

Section *28* Township *13* North, Range *7* East.

Date, Intermediate Corners, &c., &c.	Corners.	Stone, Mark, &c.	Acres.	Hnd.	Bearings, Trees, &c.	Diam.	Courses.	Dist.
--------------------------------------	----------	------------------	--------	------	----------------------	-------	----------	-------

<p>April 22nd 1892.</p> <p><i>N</i>, is a large black sandstone, by Dargan, see old books. I made survey to establish which of two stones, called <i>N</i>, is the true one, determined that the one furthest East is the correct stone, and made a witness of the stone <i>N</i>, which is marked. (N. B. 7), said stone is a redish quartz boulder. I also located the following stones as the corners of a tract of land owned by Simpson Lewis</p> <p>2 chains North of <i>W</i> large sandstone boulder.</p> <p>6.50 chains North of same large flinty boulder.</p> <p>.80 (links) East of <i>O</i></p> <p>and 2 chains North of same large grey sandstone boulder.</p> <p>6.50 chains North of <i>O</i> (no meaning) large soft sandstone, on West bank of deep wash in bluff. All persons interested were notified in writing, and all present. Charimer, Ben Young and Rowl.</p> <p>flagman Joe Howard, all were sworn before commencing survey.</p> <p><i>Thomas J. Finley</i></p>								
---	--	--	--	--	--	--	--	--

Record of Surveys in Shelby County, Indiana.

Section *28* Township *13* North, Range *7* East.

Date, Intermediate Corners, &c., &c.	Corners.	Stone, Mark, &c.	Acres.	Bound.	Bearings, Trees, &c.	Diam.	Courses.	Dist.
<p><i>Survey for Peter Lackey & J. H. Walton & others</i> <i>12 Rods South of</i> <i>12 Rods South and</i> <i>120 feet East of</i> <i>The line and corner here is in Big Blue River. See Plat. P. 2270</i></p>	<p><i>N</i> <i>O</i></p>	<p><i>Stone +</i> <i>5x4x16</i> <i>Flat Stone</i> <i>3x8x16</i></p>			<p><i>Boulders</i> <i>Oak</i></p>	<p><i>North</i> <i>18 in</i></p>	<p><i>12 Rods</i> <i>It</i></p>	
					<p><i>C. F. Webster. S. S. Co.</i></p>			

Record of Surveys in Shelby County, Indiana.

1861

Section **29** Township **13** North, Range **7** East.

Date, Intermediate Corners, &c., &c.	Corners.	Stone, Mark, &c.	Acres.	Wood.	Bearings, Trees, &c.	Diam.	Courses.	Dist.
Feb 9 th 1853 - Sargent	D	Stone			No Nit		Given	
Mar 16 th 1860 -	Z	"			Noickong	1	N 8 1/2 W	17
Ed. Minchel - Surveyor					Noackong	1	S 58 1/2 W	11 3/4
June 7 th 1861 -	A	"			Bur Oak	20	S 23 E	83
	C	"			N Walnut	24	N 43 W	19
					Beech	14	S 57 E	66 1/2
					SO	14	S 50 E	85 1/2
	A.	Stone			Beech	20	S 83 W	83
					N Walnut	24	N 43 W	19
Sick Cornis - Surveyor	I	Stone			No Nit		Given	
May 1 st 1867 -	X	"			Arnis	Nit	Sec. 32.	
79 Rods 3 Links North of	Same	"			Beech	18	N 20 E	24
	N	Given "			Stone		North	13 1/2
					SO		East	24
79 Rods 3 Links North of	Y	"			No Nit		Available	
	Same	"			SO			
					N. H. Hiller Surveyor			
Found May 5, 1950. This point was about 2 feet under ground and the limestone had laminated and separated into a number of pieces about 4 to 6" across and less than 1 inch thick. The bottom ^{lower part} of the stone was still firm and in one piece.	N	LIMESTONE			NO WITNESS FOUND.			
					IRON PIPE		NORTH	2 ROD
					IRON PIPE IN E-W FCE NORTH SIDE OF DRIVE		NORTHWESTERLY	2 ROD

Record of Surveys in Shelby County, Indiana.

1877

Section *30* Township *13* North, Range *7* East.

Date, Intermediate Corners, &c., &c.	Corners.	Stone, Mark, &c.	Acres.	Hurd.	Bearings, Trees, &c.	Diam.	Courses.	Dist.
<p><i>The Rock - Surveyor</i> <i>Dec 1857</i></p>	P				<i>Hickory</i>	<i>9</i>	<i>S 30 E</i>	<i>13</i>
	F				<i>Ash</i>	<i>9</i>	<i>S 23 E</i>	<i>4 1/2</i>
	G	<i>Stone</i>			<i>Beech</i>	<i>16</i>	<i>N 18 1/2 E</i>	<i>4 1/2</i>
	H				<i>So</i>	<i>10</i>	<i>N 48 1/2 W</i>	<i>35</i>
	G				<i>Hickory</i>	<i>20</i>	<i>West</i>	<i>30</i>
	H				<i>Ash</i>	<i>6</i>	<i>S 38 W</i>	<i>52</i>
	G				<i>Beech</i>	<i>10</i>	<i>S 29 E</i>	<i>25</i>
	O				<i>So</i>	<i>12</i>	<i>N 74 W</i>	<i>19</i>
	N				<i>Beech</i>	<i>10</i>	<i>S 29 E</i>	<i>25</i>
	W				<i>So</i>	<i>16</i>	<i>N 63 E</i>	<i>65</i>
<p><i>Feb. 20th 1861</i> <i>15 1/4 Chusworth of</i> <i>15 1/4 " " 2735 "</i> <i>June 7th, - 14 3/8 Chusworth of</i> <i>15 32 " " "</i> <i>Arms Surveyor</i> <i>Dec 1862,</i> <i>Richard Arms. assisted</i></p>	W	<i>Stone</i>			<i>So</i>	<i>16</i>	<i>N 8 W</i>	<i>24</i>
	Y	<i>Stone</i>			<i>So</i>	<i>16</i>	<i>N 8 W</i>	<i>24</i>
	V	<i>Stone</i>			<i>So</i>	<i>16</i>	<i>N 8 W</i>	<i>24</i>
	W	<i>Stone</i>			<i>So</i>	<i>16</i>	<i>N 8 W</i>	<i>24</i>
	V	<i>Stone</i>			<i>So</i>	<i>16</i>	<i>N 8 W</i>	<i>24</i>
	W				<i>Beech</i>	<i>12</i>	<i>N 67 W</i>	<i>11</i>
	W				<i>Swamp-ash</i>	<i>18</i>	<i>N 20 W</i>	<i>52</i>
	W				<i>No Wit</i>			
	W				<i>So</i>		<i>In Michgan Road</i>	<i>39.00</i>
	W				<i>Sugar</i>	<i>12</i>	<i>S 73 1/2 E</i>	<i>23</i>
	W				<i>Black Walnut</i>	<i>12</i>	<i>N 85 W</i>	<i>27</i>
	W				<i>By J. M. Calliott Ex Co Surveyor</i>			

Record of Surveys in Shelby County, Indiana.

Section **30** Township **13** North, Range **7** East.

Date, Intermediate Corners, &c., &c.	Corners.	Stone, Mark, &c.	Acres.	Hnd.	Bearings, Trees, &c.	Diam.	Courses.	Dist.
<i>var 2 1/2 & 6 + 1/2 90*</i>								
<p>May 14 + 15th 1896.</p> <p>Survey made as directed by the Will of Matthias Wright dec'd</p> <p>Set a Lime Stone 1/2 of III to II Marked + on top.</p> <p>Set a Long Lime Stone on the West side of the Michigan Road and on the middle line of the South half of the South half of the North East quarter of said Section.</p> <p>O to G = 20.36 Chns, G Boulder found ^{Spring} Right, N. 85° W. 11 1/2</p> <p>At F, South 20.40 Chains to F Lime Stone marked, Hit</p> <p>10.20 Chains South of IV P. 30. + on top. Stone Corner + South 50 1/2</p> <p>Line Stone 5' x 5' x 20" No Witness.</p> <p>Marked + top Lap Corner is South 55</p> <p style="text-align: right; margin-right: 10%;">Lehas F. Webster Surveyor, S.C.</p>								
Dec 10 1914 located	II	Lime Stone marked +			no wit.			
John W. Whitlock	M	P.K. Nail			See Tie File		See Remarks, pg. 246	
"	L	P.K. Nail			"		"	

Record of Surveys in Shelby County, Indiana.

193

Section *31*

Township *13*

North, Range *7*

East.

Date, Intermediate Corners, &c., &c.	Corners.	Stone, Mark, &c.	Acres.	Hnd.	Bearings, Trees, &c.	Diam.	Courses.	Dist.	
Off of the North End of E. & E. Cr. 21.25 Chus South of	L	Stones	30		No Nit Box Elder	16	S 87 E 6		
9.30 Chus, West of above Sno. Jagan, Surveyor. Mar 16th 1860	A	Stone			So Willow	14	N 2 W 31		
Ed. Winchel, Surveyor December 1862	L V	" Stone			So Willow	10	N 9 E 39 1/2		
Morris & Elliott, Surveyors Oct 19th, 1867 This Stone is 27 1/2 of A Sec 36	H				So Hackberry	10	N 11 E 39		
Map 17th, 1884 17.72 Chd South of 15.73 " North "	M	+ Stone			No Nit Hackberry	1	N 84 W 17		
Murphy Surveyor	"	+			No Nit Bk Walnut	10	N 85 W 27		
March 17, 1894, Surveyed for Mrs. Dacia McBuffie and	"	"			Beech	12	N 41 E 31		
Mrs. N. E. Cooper, Grave yard Lot, in the North East Corner of Section 31, and set Lime Stone Post, at each Corner of said Lot to wit:	"	"			Hackberry	30	S 13 W 27		
11 Rods West of	A	S.P. 5x5x18			Mr. McMiller Surveyor				
8 Rods South of same S.P. 5x5x18.						No Nit	10	N 85 W 27	
11 Rods West & 8 Rods S of same S.P. 5x5x18						Beech	12	N 41 E 31	

} See Page 244.

} also a Stone Post 4 Rods E of the S.W. Cor.

} of said Lot, and one 4 Rods North of "

} and one 4 Rods N & 4 R E of the said S.W. Cor.

Record of Surveys in Shelby County, Indiana.

199

Section **32**

Township **13**

North, Range **7**

East.

Date, Intermediate Corners, &c., &c.	Corners.	Stone, Mark, &c.	Acres.	Bound.	Bearings, Trees, &c.	Diam.	Courses.	Dist.
29 ⁶⁵ Rods South of	L				Beech		N 33 1/2 W 40	
Same South of	N				do		S 69 1/2 E 38	
	V				Walnut	24	S 49 W 15 1/2	
					Cherry	8	N 68 1/2 W 13	
					Linden	24	N 35 W 17 1/2	
					Beech	12	S 35 W 7	
70 ²⁵ Rods West of Same					Ash	4	S 32 1/2 W 13	
					Beech		N 65 1/2 E 22	
June 1861	C	Stone			Black Walnut	18	N 12 W 31	
					Red Elm	12	N 36 1/2 W 62	
Dec 1862	X	Limestone			No Nit			
See Remarks page 242.		Cross X. 32.			Corn's. & Elliott. Surveyors			
March 17, 1894.								
Surveyed for Mrs. D. McDuffie and Mrs. H. E. Cooper, Grave yard lot, and a Lime Stone Post at each corner to-wit: 11 Rods West of A. 31. See Sec. 31.								
April 29, 1930 Made survey of line between lots owned by Allen & Anna Fisher and Chas & R. B. Fisher on order of Allen and Anna Fisher with C. F. Yates City Engineer, and Arthur Carr as assistants. Found Franklin St to be 49' 4" wide instead of 49' 6" so we allowed one inch on north side street and measured 129 ft for line on Walnut St. which is 1/2 inches north of pipe already driven. On alley we allowed 3/4 in from sidewalk and measured 129 ft to an iron pipe already driven.								
Ralph Cochran, C. Surveyor								

Record of Surveys in Shelby County, Indiana.

Section 32 Township 13 North, Range 7 East.

Date, Intermediate Corners, &c., &c.	Corners.	Stone, Mark, &c.	Acres.	Hood.	Bearings, Trees, &c.	Diam.	Courses.	Dist.
John W. Whitlock 14, Feb., 79	N	Rod			See Tie File		See Remarks, pg. 24	34
" 6, March, 79	M	Rod			"		"	
" 22, Oct., 79	L	Iron Pin			"		"	

Record of Surveys in Shelby County, Indiana. 275

Section **33** Township **13** North, Range **7** East.

Date, Intermediate Corners, &c., &c.	Corners.	Stone, Mark, &c.	Acres.	Hund.	Bearings, Trees, &c.	Diam.	Courses.	Dist.
<i>No date given</i>	D				No. Locust	4	S 17 N	10
	O				Mulberry	10	N 78 E	21
<i>Perpetuated Rock Surveyor</i>					Beech	27	S 36 E	15
					do	18	S 37 N	14 1/2
	Z	Stone			kickals		Surveyor	
	P	"			No Nit			
	B,	2 Boulder			No Nit			
		B. 33						
	M	Red Boulder						
		M. 33.			do			
	L	Large Boulder			White Elm	6	S 67 1/2 N	48
<i>Norris Surveyor 1874. 56 Rods East of 90 7/10 Rods East of above E. F. Webster Surveyor.</i>					do	10	N 33 1/2 N	64
	X	Stake			Apple Tree		S 1 1/2 N	50
		"			Stone		East	40
	X	Old Stone			Ash	15	S 5 E	33
<i>12 3/4 Chains West of</i>					Elm	15	N 33 1/2 N	71 1/2
	O	Stone			Locust	18	N 40 N	102
					Beech	18	S 71 3/4 N	66
					Stone		East	61
<i>1875, Nov 13th, 27 5/8 Chains North of above E. F. Webster Surveyor.</i>					Beech	14	S 63 1/2 N	107 1/2
					Elm	20	N 8 N	129 1/2
	O	" + O			Stone		N 33 W	61 1/2
<i>April 21st 1883</i>					<i>G. S. Murphy S.S.C.</i>			

Record of Surveys in Shelby County, Indiana.

Section **33** Township **13** North, Range **7** East.

Date, Intermediate Corners, &c., &c.	Corners.	Stone, Mark, &c.	Acres.	Land.	Bearings, Trees, &c.	Diam.	Courses.	Dist.
15.10 Chains West of	N	Stone m 33			Stone		S 45 W	23
22.45 " " of	"	" m 6			"		S 37 E	19
30.88 Chains West of	N	Stone m 13			Stone		S 42 W	14 1/2
15.10 Chains West of	S	Stone			Stone		S	10
22.45 Chains West of	"	Stone			Stone		W	11
30.88 Chains West of	S	Stone 13			Stone		E	
					Stone		N	11
Terry Egan ss & Feb 24 th 1877								
May 1882, 8 66 1/2 Chus West of	N	Long Time Stone			no nit			
57 1/2 Chus West of	X	Large " "			" "			
to N Webster Survey, &c.								
23.87 1/2 Chus East of	Z	Stone						
May 3 rd 1883	D	"			H. Locust	12	S 63 1/2 W	13
					B. Oak	24	S 43 1/2 W	50
27.57 Chs north of	O	"			Sugar	10	N 50 W	72 1/4
					Beech	12	S 86 1/2 W	96 1/4
4.59 Chs north of the above		"			Hickory	24	S 75 1/2 W	85 1/2
G. S. Murphy S.S. &c					Beech	11	S 19 W	114
4.30 ch. East of A Sec. 4 T12 R7	V	Large Limestone			Limestone	nit	N 45 W	36 1/2
293.8					Sandstone	"	East	26
18.10 Chains West of	"	Large Limestone			Boulder	"	North	18
14.00 Chains = 56 rods East of	X	Iron Rod			Sycamore	36	N 1° W	237
					"	30	N 3° W	218
					Boulder		North	237 1/2

Record of Surveys in Shelby County, Indiana.

Section **33** Township **13** North, Range **7** East.

Date, Intermediate Corners, &c., &c.	Corners.	Stone, Mark, &c.	Acres.	Hund.	Bearings, Trees, &c.	Diam.	Courses.	Dist.
14.00 chains East of X ; thence 12.60 North, Limestone corner, marked 12.60.								
18.10 chains West of V ; thence North 9.00 chains = 36 rods a Limestone Corner.								
18.10 chains West of V ; thence 12.60 North an Iron rod driven in the bed of Little Blue River								
A Large Wooden Stake at	X	New Witness			Blackberry	24	N 5° W	73
Stands in a gully or Bayou		Old Witness retaken			Ash	30	S 5½° E	35
63 rods South of	II	Long Limestone			White Elm	28	N 81° W	5½ ft.
63 rods South of II ; thence 13.58 chains West, a Limestone marked 13.58								
November 4 th + 5 th 1886. — W ^m R. Norris, Deputy County Surveyor.								

John W. Whitlock 22, Oct. 79

P

Iron Pin

See Tie File See Remarks, pg. 246

Record of Surveys in Shelby County, Indiana.

211

Section **34**

Township **13**

North, Range **7**

East.

Date, Intermediate Corners, &c., &c.	Corners.	Stone, Mark, &c.	Acres.	Hund.	Bearings, Trees, &c.	Diam.	Courses.	Dist.
Nov 26 th 1879	C				Elm	14	S 70 E	9
	E	Boulder			Maple	13	S 42 E	20
	N				Beech	15	S 31 1/2 W	102
	X				do	12	S 6 W	99
Elliott, Surveyor, 5.02 Chus E 5.03 Chus E	of Same				Ash	6	S 37 E	25
	Y				W-Beech	2	S 61 W	25
	V				Walnut	6	S 10 1/2 W	36
	L				Ash	24	N 62 W	29
	of Same				Beech	12	S 73 E	16
10.46 Chus Nest	of				W-Oak	40	N 69 E	56
10.45 Chus Nest	of				Beech Stump	20	S 65 W	14
Aug 4 th 1864					White Elm	50	N 28 E	49
Sept 30 th 1880					Beech	30	S 45 W	32
					Oak	36	S 36 E	28
	N	Stone			Richard Norris Surveyor			
	O	"			Walnut	15	N 74 3/4 W	25
					B Oak Stump	do	56 E	14
					Swamp ash	10	S 47 1/2 W	12 1/2
5.03 Chus East of le. & Webster Surveyor. S. S.	N	Stone			Elm	7	Nest 18	
					Old witness Walnut is cut down			

Record of Surveys in Shelby County, Indiana. 217.

Section **33** Township **13** North, Range **7** East.

Date, Intermediate Corners, &c., &c.	Corners.	Stone, Mark, &c.	Acres.	Hud.	Bearings, Trees, &c.	Diam.	Courses.	Dist.
<i>No date. Former Surveyor</i>	O				<i>Oak</i>	<i>27</i>	<i>S 67 E</i>	<i>24</i>
					<i>Ash</i>	<i>18</i>	<i>ch 18 E</i>	<i>41</i>
<i>Aug 4th 1864</i>					<i>Poplar</i>	<i>37</i>	<i>ch 60 E</i>	<i>42</i>
<i>13.06 Chus East</i>	Z				<i>Beech</i>	<i>24</i>	<i>S 70 E</i>	<i>21</i>
<i>13.05^{93.96} Chus East</i>	P				<i>Pin Oak</i>	<i>24</i>	<i>S 9 E</i>	<i>34</i>
<i>Stump has been marked</i>	N				<i>Ash Stump</i>	<i>15</i>	<i>S 6 E</i>	<i>15</i>
	X				<i>Beech</i>	<i>6</i>	<i>S 6 N</i>	<i>20</i>
<i>Norris. Surveyor</i>	C	<i>Stone</i>			<i>Hickory</i>	<i>24</i>	<i>S 85 E</i>	<i>23</i>
<i>Mar 22nd 1870</i>	M	<i>" ch.</i>			<i>Poplar</i>	<i>30</i>	<i>ch north</i>	<i>92</i>
<i>20.00 Chus North of</i>	T	<i>Grave 1/2</i>			<i>Beech</i>	<i>11</i>	<i>ch 23 N</i>	<i>14</i>
					<i>Hickory</i>	<i>14</i>	<i>ch 34 N</i>	<i>37</i>
					<i>Beech</i>	<i>20</i>	<i>ch 35 E</i>	<i>43</i>
<i>2.58 ch. North of M</i>		<i>Limestone</i>			<i>C. F. Webster, Surveyor.</i>			
<i>18.05 ch. South of B</i>		<i>"</i>			<i>Marked 2.58</i>	<i>No witnesses.</i>		
<i>Oct. 8th 1886 W. R. Norris, Deputy.</i>					<i>" 18.05</i>	<i>" "</i>		
<i>Nov. 9th, 1906</i>								
<i>Located</i>	T				<i>No witness:</i>			
<i>James E. Norris,</i>		<i>S. Shelby Co.</i>						

Record of Surveys in Shelby County, Indiana.

Section *35* Township *13* North, Range *7* East.

Date, Intermediate Corners, &c., &c.	Corners.	Stone, Mark, &c.	Acres.	Hund.	Bearings, Trees, &c.	Diam.	Courses.	Dist.
<p><i>Dec. 14 th., 1906.</i> <i>Located</i> <i>Located</i> <i>James E. Morris, S. S. Sec.</i></p>	<p><i>M</i> <i>N</i></p>				<p><i>No witness</i> <i>"</i></p>			

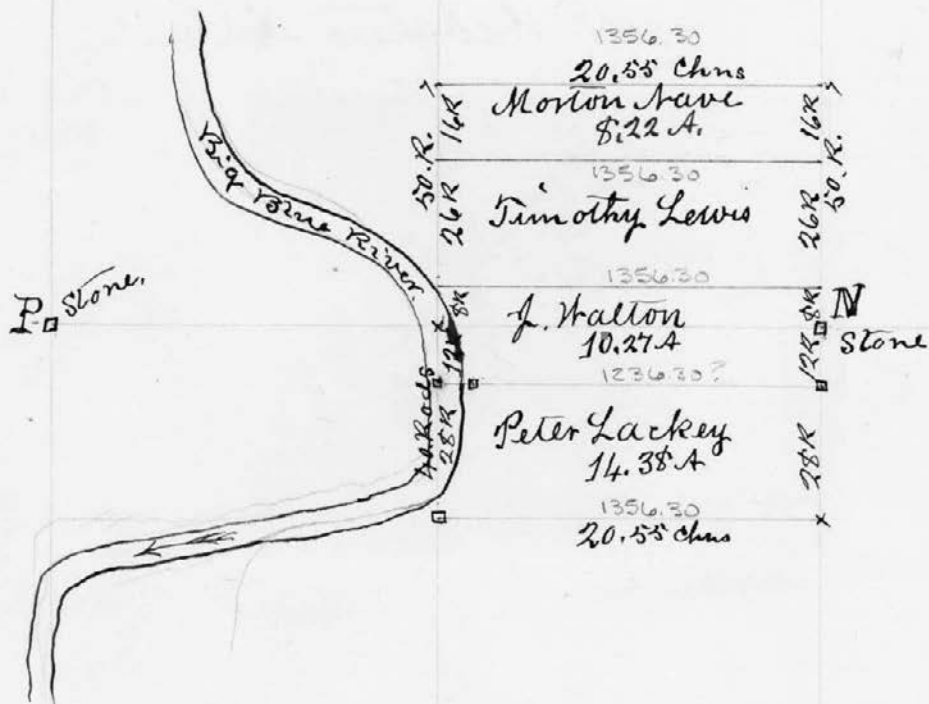
REMARKS.

See 28. I find an error in the Record made by Miller, he records Cor M and other Corners made by Starting at M (or governed by the same.) When it should be O, and I have corrected it - See old Book for further particulars, if necessary - Charles F. Webster.

A Corner Established between Leonidas Gordon Sen Senior and the Shelbyville Mill Property, to be found as follows to-wit: - Beginning at a point 83 Rods East of the North-west Corner, (H¹) of the Section - Thence S 10° 30' W 60.3 Rods. - Thence S 11° 30' W 62 Rods - Thence S 10° 30' W 64.3 Rods. - Thence S 3° W 14.3 Rods to the Corner aforesaid - Old Book Page 32 - June 1861 - Richard Morris, Surveyor

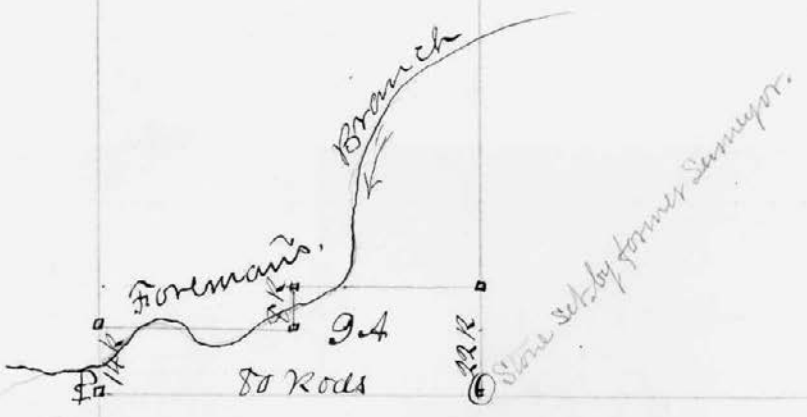
PLAT. Sec. 28.13-7.

243.



DIST. by RECORD

PLAT.



11

REMARKS.

~~March 17, 1897.~~

See page 61

June 8 1943 This stone is the SE. Cor of a tract occupied by a Garage & Dwelling, This tract is 70' N+S. & 132' E+W and should have been 34' farther N. to be North of lot No 5 as the deed called for
All parties interested were present and agreed to the proposition

Geo. E. Olman

REMARKS.

Corners by John W. Whitlock - Search for stone was made at all corners
If stone wasn't found - either - Monument found before digging & was reset
or - Monument was set from best evidence