

34.65

(32, 210)

0

# FIELD NOTES---EXPLANATION OF.

	34.3	34.4	34.5	34.6	34.7	34.8	34.9	35.0
	B	C	D	E	F	G	H	I
32.58	31.69 77.82 125.52	40.00 124.31 128.22	44.40 131.76 130.72	4.30 130.64 131.64	4.10 131.64 131.06	2.90 134.64 140.18		145.97
27	6 142.72 36.00 144.84 149.93	5 78.43	4 80.50	3 80.23	2 81.26	1 82.00	H	41
.61	7 149.93 37.50 154.02	5 79.18	5 80.50	3 79.90	2 81.25	1 81.90	I	17
2.42	18 156.26 38.60 159.08	1 17 79.69	1 16 80.20	1 15 80.50	1 14 81.00	1 13 81.78	K	60
3.56	6 143.23 148.11	5 78.50	4 79.80	3 80.27	2 80.50	1 80.60	L	45
4.26	30 172.00 43.50 169.42 174.25 174.00	2 29 78.22	2 28 79.60	2 27 79.50	2 26 79.80	2 25 80.55	M	52
	31 174.25 174.00	1 32	1 33	1 34	1 35	1 36	m	
	S	r	R	q	Q	P	o	O

Township 12 North, Range 7 East.

Water 15' Cont

found  
38.60

57  
83

# Field Notes of Shelby County, Indiana.

Township *12* North, Range *7* East.

Corners.	Bearing Trees.	Diam.	Courses.	Dist.	Corners.	Bearing Trees.	Diam.	Courses.	Dist.
A.	Alum	12	N 4 N	18	G.	Sugar	6	N 17 E	11
	do	12	S 65 E	25		Beech	9	S 11 N	27
A)	Hackberry	6	S 46 E	11	G'	do	12	N 30 E	8
B.	Buckeye	10	N 26 N	10		do	9	S 83 N	18
B'					H.	do	20	S 26 N	11
						do	20	N 10 E	31
C.	Hackberry	30	S 57 E	18	H'	do	9	N 87 N	17
	do	18	N 81 N	6		Ash	24	N 17 E	14
C'					I.	Maple	8	S 10 E	15
						Beech	7	N 24 N	15
D.	Beech	12	S 26 E	8	I'	Hackberry	10	S 79 N	16
	do	18	N 14 N	2		Beech	8	N 28 E	14
D'					K.	do	6	S 55 E	6
						Maple	10	S 37 N	16
E.	Beech	12	N 86 E	18	K'	Linn	30	S 27 N	8
	do	10	N 73 N	9		Beech	10	N 70 E	16
E'					L.	Sugar	21	S 30 E	16
						do	14	N 17 N	24
F.	Beech	15	N 44 N	10	L'	R-Oak	36	N 77 N	25
	do	12	S 11 E	30		Beech	9	N 73 E	20
F'					M.	do	18	S 21 N	30
						Ash	4	S 72 E	6

## Field Notes of Shelby County, Indiana.

Township 12 North, Range 7 East.

Corners.	Bearing Trees.	Diam.	Courses.	Dist.	Corners.	Bearing Trees.	Diam.	Courses.	Dist.
M'	Beech	9	N 41 W	21	S.	Beech	10	N 60 E	22
	Ash	8	N 73 E	17		So	12	N 69 W	28
N.	Beech	10	N 23 W	4	S'	So	9	N 14 W	9
	So	8	N 35 E	21		So	15	N 7 W	28
N'	So	12	N 18 W	14	T.	So	12	N 17 E	17
	So	14	N 52 W	10		So	9	N 71 W	20
O.	So	7	N 10 W	11	T'				
	Ash	8	N 12 E	11	U.	Hickory	10	N 28 E	4
O'	So	4	N 75 W	9		R-Oak	30	N 17 W	24
	Hickory	12	N 84 E	36	U'				
P.	Beech	9	N 50 E	20					
	So	14	N 82 W	26	W.	Beech	9	N 30 E	13
P'	So	12	N 67 W	12		So	4	N 14 W	5
	Sugar	18	N 68 E	23	V'				
Q.	Beech	9	N 88 E	31					
	So	9	N 83 W	12	W.	R-Oak	40	N 62 W	7
Q'	So	7	N 65 E	25		Hickory	10	N 68 E	50
	Buckeye	9	N 50 W	4	W'				
R.	R-Oak	30	N 4 W	11					
	Beech	14	N 15 W	12	X.	Beech	10	N 54 W	4
R'	So	21	N 47 E	10		So	12	N 22 E	30
	So	15	N 78 W	18	X'				

# Field Notes of Shelby County, Indiana.

Township 12 North, Range 7 East.

Corners.	Bearing Trees.	Diam.	Courses.	Dist.	Corners.	Bearing Trees.	Diam.	Courses.	Dist.
Y.	Beech	4	N 27 W	4	27, 28, 33, 34	Sugar	12	S 8 W	12
Y'	do	4	S 22 E	12		Beech	30	S 84 E	10
25, 26, 35, 36	Ash	12	S 87 W	4	21, 22, 27, 28	do	8	S 68 W	1
23, 24, 25, 26	Beech	4	S 89 E	18	15, 16, 21, 22	do	8	N 80 W	5
	do	4	S 55 W	4		do	31	S 77 E	9
13, 14, 23, 24	Sugar	7	N 44 E	16	9, 10, 15, 16	do	12	S 77 E	7
	Beech	9	N 61 W	28		do	15	S 76 W	25
	do	5	N 44 E	20	3, 4, 9, 10	do	4	S 39 W	2
11, 12, 13, 14	do	30	N 30 E	60		B. Oak	40	N 14 W	12
	do	4	N 48 E	10	28, 29, 32, 33	Beech	30	S 9 E	12
1, 2, 11, 12	do	5	S 30 E	2		do	8	N 10 E	2
	do	4	S 64 W	13	20, 21, 28, 29	do	9	S 18 W	25
26, 27, 34, 35	Beech	24	S 70 W	18		do	30	S 61 E	25
	do	7	N 47 E	21	16, 17, 20, 21	do	15	S 12 E	13
22, 23, 26, 27	do	10	N 37 E	10		do	24	S 78 W	26
	do	6	S 37 W	15	8, 9, 16, 17	do	10	N 10 E	25
14, 15, 22, 23	Elm	26	N 45 E	5		do	24	S 47 W	10
	Beech	12	S 41 W	60	4, 5, 8, 9	do	20	S 84 W	13
10, 11, 14, 15	Oak	10	S 62 W	5		do	6	N 89 E	7
	Beech	25	N 82 E	35	29, 30, 31, 32	do	10	S 38 W	25
2, 3, 10, 11	do	10	S 38 E	28		Ash	10	N 71 E	15
	do	6	N 17 W	6					

# Field Notes of Shelby County, Indiana.

Township 12 North, Range 7 East.

Corners.	Bearing Trees.	Diam.	Courses.	Dist.	Corners.	Bearing Trees.	Diam.	Courses.	Dist.
19.20.29.30	Ash	7	S 55 N	25	L to V. 1	Beech	4	N 64 E	5
	do	5	S 37 E	6	"	do	8	N 41 N	6
17.18.19.20	Beech	10	S 35 E	20	2	do	8	S 19 N	12
	do	6	S 81 N	15	"	do	6	N 19 N	8
7.8.17.18	do	20	N 77 E	21	3	do	6	S 35 E	11
	do	15	S 34 N	18	"	do	28	S 34 N	18
5.6.7.8	do	10	S 24 E	12	4	do	31	S 77 E	21
	Elm	10	N 48 N	20	"	do	15	N	4
M to U					5	do	10	N 19 N	26
1	Beech	12	N 43 E	8	"	do	8	S 20 E	25
"	do	35	S 5 E	25	6	Elm	24	N 42 E	12
2	do	12	S 14 E	12		Ash	6	S 44 N	25
"	do	30	S 84 N	20	K to W				
3	do	4	E	10	1	Beech	18	N 81 E	15
"	do	30	N 4 N	7	"	do	8	S 25 N	10
4	do	6	N 19 N	20	2	do	18	N 16 E	14
"	Sugar	9	S 8 E	12	"	do	12	S 14 E	10
5	Beech	12	N 15 N	19	3	Elm	5	N 20 N	2
"	Elm	15	S 4 N	20	"	do	7	S 25 N	19
6	Beech	10	N 19 E	8	4	Sugar	13	S	30
	do	6	S 19 N	25	"	Ash	10	S 81 N	15
L to V					5	Beech	18	N 43 E	15
					"	do	12	S 77 N	11

# Field Notes of Shelby County, Indiana.

Township *12* North, Range *7* East.

Corners.	Bearing Trees.	Diam.	Courses.	Dist.		Corners.	Bearing Trees.	Diam.	Courses.	Dist.
<i>Same,</i>	<i>Beech</i>	<i>6</i>	<i>N 22 W</i>	<i>3</i>		<i>Same,</i>	<i>Beech</i>	<i>30</i>	<i>S 43 E</i>	<i>28</i>
<i>I to X</i>	<i>Hickory</i>	<i>10</i>	<i>S 81 E</i>	<i>18</i>		<i>"</i>	<i>do</i>	<i>3</i>	<i>N 33 W</i>	<i>8</i>
<i>1</i>	<i>Beech</i>	<i>3</i>	<i>S 70 W</i>	<i>4</i>		<i>5</i>	<i>do</i>	<i>30</i>	<i>S 74 E</i>	<i>20</i>
<i>"</i>	<i>do</i>	<i>11</i>	<i>S 10 W</i>	<i>3</i>		<i>"</i>	<i>do</i>	<i>10</i>	<i>N 62 W</i>	<i>12</i>
<i>2</i>	<i>do</i>	<i>10</i>	<i>N 48 E</i>	<i>12</i>		<i>6</i>	<i>do</i>	<i>12</i>	<i>N 47 W</i>	<i>12</i>
<i>"</i>	<i>do</i>	<i>3</i>	<i>S 12 W</i>	<i>15</i>		<i>7</i>	<i>do</i>	<i>4</i>	<i>S 63 E</i>	<i>2</i>
<i>3</i>	<i>do</i>	<i>8</i>	<i>N 18 E</i>	<i>20</i>		<i>O to H</i>				
<i>"</i>	<i>do</i>	<i>28</i>	<i>S 32 W</i>	<i>21</i>		<i>1</i>	<i>Beech</i>	<i>11</i>	<i>N 87 W</i>	<i>15</i>
<i>4</i>	<i>do</i>	<i>24</i>	<i>N 88 E</i>	<i>4</i>		<i>"</i>	<i>do</i>	<i>6</i>	<i>S 77 E</i>	<i>18</i>
<i>"</i>	<i>do</i>	<i>30</i>	<i>N 9 E</i>	<i>10</i>		<i>2</i>	<i>Ash</i>	<i>12</i>	<i>S 37 E</i>	<i>10</i>
<i>5</i>	<i>do</i>	<i>10</i>	<i>S 14 E</i>	<i>8</i>		<i>"</i>	<i>H Oak</i>	<i>34</i>	<i>S 54 W</i>	<i>15</i>
<i>"</i>	<i>do</i>	<i>12</i>	<i>N 28 W</i>	<i>4</i>		<i>3</i>	<i>H Beech</i>	<i>6</i>	<i>N 81 E</i>	<i>3</i>
<i>6</i>	<i>Bump Ash</i>	<i>14</i>	<i>N 35 E</i>	<i>10</i>		<i>"</i>	<i>Elm</i>	<i>14</i>	<i>N 13 E</i>	<i>10</i>
<i>H to Y</i>	<i>Hickory</i>	<i>4</i>	<i>S 15 W</i>	<i>20</i>		<i>4</i>	<i>Beech</i>	<i>4</i>	<i>N 77 E</i>	<i>90</i>
<i>1</i>	<i>Beech</i>	<i>26</i>	<i>N 37 E</i>	<i>20</i>		<i>"</i>	<i>Sugar</i>	<i>19</i>	<i>N 83 W</i>	<i>6</i>
<i>"</i>	<i>Sugar</i>	<i>3</i>	<i>S 10 E</i>	<i>11</i>		<i>5</i>	<i>Elm</i>	<i>10</i>	<i>N 74 E</i>	<i>2</i>
<i>2</i>	<i>Beech</i>	<i>10</i>	<i>S 53 E</i>	<i>5</i>		<i>"</i>	<i>Hickory</i>	<i>7</i>	<i>S 44 W</i>	<i>18</i>
<i>"</i>	<i>do</i>	<i>7</i>	<i>N 62 W</i>	<i>13</i>		<i>6</i>	<i>Buckeye</i>	<i>6</i>	<i>N 8 W</i>	<i>10</i>
<i>3</i>	<i>do</i>	<i>24</i>	<i>S 82 W</i>	<i>3</i>		<i>"</i>	<i>Beech</i>	<i>15</i>	<i>S 3 W</i>	<i>7</i>
<i>"</i>	<i>Sugar</i>	<i>10</i>	<i>N 82 E</i>	<i>30</i>		<i>P to H</i>				
						<i>1</i>	<i>Beech</i>	<i>10</i>	<i>S 37 W</i>	<i>12</i>
						<i>"</i>	<i>Sogwood</i>	<i>6</i>	<i>S 54 E</i>	<i>11</i>

Township 12 North, Range 7 East.

	Corners.	Bearing Trees.	Diam.	Courses.	Dist.		Corners.	Bearing Trees.	Diam.	Courses.	Dist.
	Same,	2 Beech	20	S 65 N	21		R to C 1	Beech	15	N	4
	"	do	14	S 65 E	12		"	do	12	S 10 E	20
	3	do	6	S 86 E	7		2	do	11	S 20 N	18
	"	do	8	S 73 N	33		"	do	4	N 30 E	7
	4	Wump Ash	18	S 64 E	7		3	do	6	S 29 E	8
	"	Hickory	4	N 82 N	9		"	Ash	4	N 20 N	7
	5	Beech	12	S 18 N	15		4	Beech	15	N 26 E	5
	"	Ash	4	N 25 E	8		"	do	4	N 34 N	10
	6	Sugar	12	S 50 E	25		5	do	4	N 87 E	10
	"	Beech	28	S 81 N	12		"	do	24	N 27 N	13
	Q to D						6	do	12	S 47 N	12
	1	Beech	10	S 15 N	14			do	8	N 33 E	7
	"	do	13	N 10 E	15		S. to B				
	2	do	10	S 28 N	10		1	Ash	24	S 68 E	18
	"	do	10	N 25 E	8		"	Beech	26	N 47 N	25
	3	Sugar	12	S 30 N	4		2	Ash	14	S 14 E	12
	"	Beech	4	N 70 E	3		"	do	10	N 48 N	18
	4	do	10	S 70 E	5		3	Beech	15	S 39 E	25
	"	do	34	S 82 N	15		"	do	4	S 81 N	10
	5	Hickory	6	S 18 N	10		4	Elm	24	N 7 N	15
	"	Ash	18	S 89 N	13		"	N Beech	4	S 23 E	6
	6	Maple	18	S 69 E	19		5	Elm	10	S 29 E	10
	"	Elm	10	N 60 N	11		"	do	11	N 31 E	10

# Field Notes of Shelby County, Indiana.

Township *12* North, Range *7* East.

Corners.	Bearing Trees.	Diam.	Courses.	Dist.		Corners.	Bearing Trees.	Diam.	Courses.	Dist.
<i>Same</i>	<i>4 Elm</i>	<i>18</i>	<i>S 78 N</i>	<i>12</i>						
<i>"</i>	<i>Oak</i>	<i>18</i>	<i>N 53 E</i>	<i>30</i>						

INDEX

Township

12

North, Range

7

East.

Corners.	Bearing Trees.	Diam.	Courses.	Dist.	Corners.	Bearing Trees.	Diam.	Courses.	Dist.
<i>Section</i>	<i>Page</i>				<i>Section</i>	<i>Page</i>			
1	9				— 23	141			
2	15				24	147			
3	21				25	153			
4	27				26	159			
5	33				27	165			
6	39				28	171			
7	45				29	177			
8	51				30	183			
9	57				31	189			
10	63				32	195			
— 11	69				33	201			
12	75				34	207			
13	81				35	213			
— 14	87				36	219			
15	93								
16	99								
17	105				<i>Remarks</i>	226			
18	111					<i>to</i>			
19	117					276.			
20	123				<i>Plats</i>	225			
21	129					<i>to</i>			
22	135					275.			

# Record of Surveys in Shelby County, Indiana.

Section 1 Township 12 North, Range 7 East.

Date, Intermediate Corners, &c., &c.	Corners.	Stone, Mark, &c.	Acres.	Hnd.	Bearings, Trees, &c.	Diam.	Courses.	Dist.
Feb 15 <sup>th</sup> 1853 - Off. S. Eng.	N. E. cor.		60					
	N. W. Cor.	Stone			No Nit			
	N. E. "	"			"			
Jarvis, Surveyor.	S. E. "	"			"			
	W				Beech	12	S 67 E	27
					do	8	N 33 W	7
Mar 3 <sup>rd</sup> 1864 -	O.	L Stone			No 50 Nit			
	D.	Boulder.			"			
	C.	"			"			
8 <sup>65</sup> Chas H N. W. Miller, Surveyor	N	L Stone			"			
15 <sup>41</sup> Chas West of	N	Slake			Pin Oak	3 <sup>1</sup> / <sub>2</sub>	N 15 <sup>1</sup> / <sub>2</sub> W	84
					Beech	15	N 41 <sup>1</sup> / <sub>2</sub> E	79
15 <sup>41</sup> Chas West of	C	"			Beech	30	S 30 E	34
June 1875					do	10	S 47 W	41
30 <sup>82</sup> Chas West of	C	"			Sugar	18	S 67 W	21 <sup>1</sup> / <sub>2</sub>
C. B. Webster Surveyor					Ash	10	S 65 <sup>1</sup> / <sub>4</sub> E	41
<p>(Recorded here by mistake and should be in Section 2. I made a Record of Corners established in the Partition of the Jaco. Lands in Sections 2 and 3.</p>								

## Record of Surveys in Shelby County, Indiana.

Section 1 Township 12 North, Range 7 East.

Date, Intermediate Corners, &c., &c. <i>Var. 3<sup>x</sup></i>	Corners.	Stone, Mark, &c.	Acres.	Rand.	Bearings, Trees, &c.	Diam.	Courses. <i>3<sup>x</sup> 16</i>	Dist.
<i>July 6<sup>th</sup> 1896. 7.14 ch South of 7.14 ch South of for E. Midkiff &amp; Catharine Kuhn.</i>	<i>E D</i>	<i>Lime Stone Stone</i>	<i>No Hit No Hit</i>		<i>No Hit</i>			
<i>March 1<sup>st</sup> 1897. 6.06 ch North of 6.00 ch North of</i>	<i>W X</i>	<i>Lime Stone Lime Stone</i>			<i>Beech Hickory Walnut Beech</i>	<i>15 18 12 24</i>	<i>East S 82 1/2 W S 74 1/2 E S 20 W</i>	<i>23 41 38 78</i>
					<i>C. F. Webster, S. S. C.</i>			

# Record of Surveys in Shelby County, Indiana.

Section **2**      Township **12**      North, Range **7**      East.

Date, Intermediate Corners, &c., &c.	Corners.	Stone, Mark, &c.	Acres.	Bound.	Bearings, Trees, &c.	Diam.	Courses.	Dist.
<p>Sept 4<sup>th</sup> 1865<sup>2</sup></p> <p>Geo. Koop, Surveyor Assisted by Morris Exler Jan 4<sup>th</sup> 1889.</p> <p>22 3/8 chas South and 22 3/8 chas East of G. F. Webster Deputy S.S.C.</p> <p>See other Corners made in the Partition of Lynus Jacobs, Lands. and Recorded by mistake in Sections 2 and 3.</p> <p>July 23 1940 Set by George Altman.</p> <p>John W. Whitlock " "</p>	<p>L M N</p> <p>V W X</p> <p>P</p> <p>Z</p> <p>X</p> <p>V</p>	<p>Sand Stone</p> <p>L " "</p> <p>"</p> <p>Snd Stone</p> <p>R. Boulder</p> <p>L Stone</p> <p>Stone for 30 Sides</p> <p>Limestone Z on top</p> <p>R.R. Spike</p> <p>Iron Pin</p>			<p>Boulder</p> <p>No Mt</p> <p>Beech</p> <p>so</p> <p>so</p> <p>Butternut</p> <p>so</p> <p>Beech</p> <p>Stone</p> <p>Stone</p> <p>marked 2, 3, 11 and 10</p> <p>See Tie File, See Remarks, pg. 234</p> <p>" "</p>	<p>14</p> <p>24</p> <p>24</p> <p>16</p> <p>20</p> <p>15</p>	<p>N 40 W</p> <p>S 40 E</p> <p>N 73 W</p> <p>S 3 1/2 W</p> <p>E</p> <p>N 60 E</p> <p>North</p> <p>West</p>	<p>14</p> <p>44</p> <p>25</p> <p>47</p> <p>27 1/2</p> <p>57 1/2</p> <p>30</p> <p>30</p>

# Record of Surveys in Shelby County, Indiana.

Section *D* Township *12* North, Range *7* East.

Date, Intermediate Corners, &c., &c.	Corners.	Stone, Mark, &c.	Acres.	Innd.	Bearings, Trees, &c.	Diam.	Courses.	Dist.
Off E 1/2 S. E. of N End of Line Sargin. Surveyor	<b>C</b>	Stone			S-Ash	15	S 53 E	13
		Boulder			Buckeye	12	N 70 E	22
By Chickass, Surveyor Corniss, Surveyor Jan 5th 1868	<b>N</b>	Beech			Beech	24	N 81 W	20
	<b>O</b>	< 4 Sides 2 Stone			Smooth 4 Sides	8	N 41 E	33
Miller. Surveyor	<b>P</b>	Boulder.			Red Oak	36	E	12
	<b>D</b>	"			Beech	15	S 26 E	13
Partition of Jaco. Lands. 15 1/4 chms West of 1017.06 15 1/4 chms West of 2034.12 30.82 chms West of Chas. F. Webster S. S. C.	<b>H</b>	Stone			Maple	20	S 69 E	61.
	<b>N</b>	Stake			so	20	N 82 E	69.
<i>Book 2</i>	<b>C</b>	"			Hickory	24	N 22 W	28
	<b>C</b>	"			Oak	15	N 42 E	37 1/2
	<b>C</b>	"			N-Oak	20	N 81 E 51	
	<b>M</b>	Stone			Ash	24	S 57 3/4 E	52 1/2
	<b>T</b>	Stone			Pin Oak	3 1/2	N 15 1/2 W	84
					Beech	15	N 41 1/2 E	79.
					Beech	30	S 30 E	34
					so	10	S 47 W	41
					Sugar	18	S 67 W	21 1/2
					Ash	10	S 65 1/4 E	41
					no of ditche n. side pipe. not avail.			
					W. Buck	12	S 57 3/8 E (M)	27
					Dynamite	36	N 69 E	74

Section 3 Township 12 North, Range 7 East.

Date, Intermediate Corners, &c., &c.	Corners.	Stone, Mark, &c.	Acres.	Hnd.	Bearings, Trees, &c.	Diam.	Courses.	Dist.
<b>L</b>	Stone	on south side of pike in ditch, no mark.						
March 9 <sup>th</sup> 20, 1888.								
Finley, S. C.								
Jan 4 <sup>th</sup> 1889, 22 35 chs S of II		Stone by former Surveyor						
22 35 East of above		Stone for 50 — Beech 1/2 ft 6" E 57 1/2						
A. F. Webster Deputy S. C.		Stone North 50						
		Stone West 50						
Witness for	X	Stones					SW, NW.	50 ft.

# Record of Surveys in Shelby County, Indiana.

Section

Township

North, Range

East.

Date, Intermediate Corners, &c., &c.	Corners.	Stone, Mark, &c.	Acres.	Hund.	Bearings, Trees, &c.	Diam.	Courses.	Dist.
<p>NOTE: STONES @ 15.6 chains &amp; 32.25 chains WEST OF A were FOUND by → FACE ENGINEERING June 1984</p>								
<p>L. Moy, Deputy Surveyor</p>								



# Record of Surveys in Shelby County, Indiana.

Section 4

Township 12

North, Range 7

East.

Date, Intermediate Corners, &c., &c.	Corners.	Stone, Mark, &c.	Acres.	Hund.	Bearings, Trees, &c.	Diam.	Courses.	Dist.
May 26 1942 set stone	10.18 ch. E. & 4.25 N. of P.	stone + on top			stone wit. North 10ft.			
17.81 ch E. & 4.25 ch N. of P.		stone on S. Right of way of State Road 29						

# Record of Surveys in Shelby County, Indiana.

Section 5<sup>th</sup> Township 12 North, Range 7 East.

Date, Intermediate Corners, &c., &c.	Corners.	Stone, Mark, &c.	Acres.	Bound.	Bearings, Trees, &c.	Diam.	Courses.	Dist.	
<p><i>Nickols. Surveyor</i>  <i>Mar 28<sup>th</sup> 1830 - 28 R. N. of</i>  <i>Calliatt, Surveyor.</i>  <i>Shelbyville Corners</i>  <i>Var Steele 3<sup>rd</sup></i></p>	B				Beech	24	S 70° E	67	
	R				do	18	S 70° W	21	
	Y				do	6	S 85° E	17	
	N				H-Oak	36	N 20° E	10 1/2	
	L		<i>F. Boulder.</i>		<i>var 4<sup>th</sup> 7<sup>th</sup> Hackberry</i>	16	S 81° E	64	
	N				<i>Hairground</i>		N. W. Cor.		
	C				<i>House</i>	3	N 82° E	36	
	N				<i>Spire Court</i>		N 74 1/4° W		
	C		<i>G. Stone</i>		<i>Presby. Church</i>		N 51 1/4° W		
	N		<i>"</i>		<i>N. E. Cor. Seminary</i>		N 24° - 2' W		
<p><i>(In gravel Pit.) 28 R N of</i></p> <p><i>4 7 3/10 Rods West of</i></p> <p><i>14 15/100 Rods S 12 1/2° E of the above</i></p> <p><i>18 3/100 Rods E of the above</i></p> <p><i>14 Rods West of</i></p> <p><i>18 4/100 Rods S 19° W of last marked corner</i></p> <p><i>those corners are at the city Lot</i>  <i>June 3<sup>rd</sup> 1877 J. Cogan S.S.C</i></p>	C				<i>Locust</i>	12	S 53 1/2° E	172	
	N		<i>"</i>		<i>var 3<sup>rd</sup> 36' Bur Oak</i>	24	S 44 3/4° E	180	
	A		<i>L. Stone</i>		<i>Norris Surveyor, assisted</i> <i>By Calliatt, Ex l.S.</i>	<i>Sycamore</i>	20	S 23 1/2° W	148
	A		<i>"</i>		<i>do</i>	20	N 6 1/2° W	209	
	A		<i>"</i>		<i>do</i>	24	S 14° W	150	
		<i>"</i>		<i>do</i>	<i>nitara</i>				
		<i>"</i>		<i>do</i>	<i>ash</i>	18	S 28° W	101	



Section 5 Township 12 North, Range 7 East.

Date, Intermediate Corners, &amp;c., &amp;c.

Corners.

Stone, Mark, &amp;c.

Acres. Land.

Bearings, Trees, &amp;c.

Diam.

Courses.

Dist.

Set Stone 93 $\frac{3}{4}$  feet ~~at~~ The center of the J. M. & R. R. tract and the center of Harrison Avenue South East on a line with the center of Van Avenue where the same intersects Harrison Avenue.

Set stone S 17 $\frac{3}{4}$ ° W. 19 $\frac{1}{2}$  feet of the stone set in Harrison Avenue which is above described.

Set stake west 91 feet from stone set <sup>S 17 $\frac{3}{4}$ ° W</sup> 19 $\frac{1}{2}$  feet in Harrison Avenue, the last name stake being in the center of ~~the~~ J. M. & R. R. tract.

To Charles<sup>3</sup> Webster: Minerva J. Webster, Gertrude Webster  
 you are hereby notified that on the 9<sup>th</sup> day of August, 1901, at 8 o'clock A. M. the County Surveyor of Shelby County, Indiana, will locate and establish the following corners to-wit; at a point ninety three and four tenths feet (93 $\frac{3}{4}$ ) south, 39 $\frac{1}{2}$  degrees East of the intersection of the Jeffersonville, Madison and Indianapolis (the J. M. & R. R.) and Harrison Ave. and the lands formerly owned by Samuel Hamilton in the city of Shelbyville, Indiana, also a corner at a point one hundred ninety seven and one half feet south 17 $\frac{3}{4}$  degrees west from the corner above described, also a corner at a point in the center of the said railroad ninety one feet west  
 over

Section

5

Township

12

North, Range

7

East.

Date, Intermediate Corners, &amp;c., &amp;c.

Corners.

Stone, Mark, &amp;c.

Acres.

Hund.

Bearings, Trees, &amp;c.

Diam.

Courses.

Dist.

of last above described corner. also in the city of Shelbyville, Indiana.

Chain carrier of said survey the county surveyor carrying one end, and Harry Banta.

August 9<sup>th</sup> 1901

Millard F. Crawford

County Surveyor of Shelby County

May 22, 1916. Survey as follows

Cut chisel + in E. Edge East sidewalk of Elm street, for N.W. Cor. Lot 55 Carrie D. Sims Addition

Sept. 1920 surveyed for Dr. Green & Mary Gahimer in Shelbyville see page 229 for plat

March 23 1944

Set stone 15.20 ch. S of A. on south side of Jackson St.  
G.E.O.

# Record of Surveys in Shelby County, Indiana.

Section **6** Township **12** North, Range **7** East.

Date, Intermediate Corners, &c., &c.	Corners.	Stone, Mark, &c.	Acres.	Hnd.	Bearings, Trees, &c.	Diam.	Courses.	Dist.
Elliott, Surveyor. West side of Travel Pit.	N				Beech	7	S 49 N	25
	O				do	6	N 72 N	26
	P				do	14	S 18 N	26
	Y	Boulder			Halmot	48	N 47 N	17 1/2
	A	Y-Stone			Beech.	22	S 87 N	21 1/2
	B	"			Oak.	40	N 36 N	22
	C	"			S-Ash	14	S 21 E	17
	L	"			Apple	10	S 34 N	128
	L	"			Stone		N	30
	L	"			do		S	30
Field notes, Torriss. l.e.s. assisted	L	"			Colm	18	S 78 N	12.
17 2/3 chains W + 10 chains S of	L	Stone			By Elliott Exp. l.e.s.			
12 7/10 chains W of the above	L	Stone			in Pike no wit avail			
30 6/10 chains, W + 18 chains S of	L	"						
8 chains S of the above	L	"						
7 1/2 Rods W + 104 S	L	"						
40 Rods South	"	"						
32 Rods S of the above	"	"						
1/2	X to W	"						
72 Rods S + 11 1/2 Rods W	L	"						
Dec 1872 Jerry Dugan S.S.C.								

These corners have no witnesses available

Record of Surveys in Shelby County, Indiana.

Section 6 Township 12 North, Range 7 East.

Date, Intermediate Corners, &c., &c.	Corners.	Stone, Mark, &c.	Acres.	Hnd.	Bearings, Trees, &c.	Diam.	Courses.	Dist.
14 Rods North of	M	Lime Stone						
14 Rods North and 11 Rods East of	"	" "						
30 1/2 Rods North of	"	" "						
30 1/2 Rods North and 11 Rods East of	"	" "						
Sept 18 <sup>th</sup> 1882 Chas. F. Webster Surveyor, S. C.								
By - J. Dugan Dept S & S								
7 <sup>90</sup> / <sub>100</sub> Chains S + 7 <sup>15</sup> / <sub>100</sub> E of	IE	a stake	set in	Gravel bar	no wit avail			
7 <sup>90</sup> / <sub>100</sub> Chains S + 7 <sup>15</sup> / <sub>100</sub> E + 6 <sup>52</sup> / <sub>100</sub> N 38° E of	"	" "	" "	" "	" "	" "	" "	" "
10 links East of the last above named	"	" "	" "	" "	" "	" "	" "	" "
7 <sup>90</sup> / <sub>100</sub> Chains S + 15 <sup>15</sup> / <sub>100</sub> Chains E of	E	" "	-	-	walnut	5	N 85 1/2 W	32
chain carriers and flag carriers					do	5	S 38 W	74
Wm. J. Dick Dobbin								
J. Haybig and Dr. Rucker								
May 12 <sup>th</sup> 1891								
Dugan S & S								
For further record in above survey see page 328 and 329								
13-6. recorded by mistake for 12-7.								
Thomas S. Frinley								

# Record of Surveys in Shelby County, Indiana.

Section **7**

Township **12**

North, Range **7**

East.

Date, Intermediate Corners, &c., &c.	Corners.	Stone, Mark, &c.	Acres.	Hund.	Bearings, Trees, &c.	Diam.	Courses.	Dist.
<p>Mr. Kendrick, Surveyor, Sept 14<sup>th</sup> 1859</p>	N				Grassh	30	N 65 W	9
	O				So	18	E	10 1/2
	S				R-Oak	30	N	21
	T				So	48	N 28 W	25
	W				So	15	S 20 W	22
	L.M				elm	20	N 86 E	24
	V				Sugar	11	N 40 E	23
	E				So	20	S 10 W	30
	P				Beech	3	N 46 E	7
	D				Sugar	10	S 43 W	31
<p>Ed Kinchel, Surveyor, Feb 23<sup>rd</sup> 1870</p>	L.M	stones			No Nit			
<p>Miller, Surveyor May 6<sup>th</sup> 1901</p>	V	"						
<p>1220 feet width M. F. Crawford S. S. C.</p>	E	"			By Gap Corner		1-12-6	
<p>Relocated and set Stone April 23-1909 S. P. Harris S. S. C.</p>	P				No Nit			
	A	Lime Stone			With lime stone		E	14 1/2 feet
	"	" "			" Boulder		E	17 feet
	S	Lime stone X on top			Lime stone		East	32

## Record of Surveys in Shelby County, Indiana.

Section

7

Township

12

North, Range

7

East.

Date, Intermediate Corners, &c., &c.	Corners.	Stone, Mark, &c.	Acres.	Hund.	Bearings, Trees, &c.	Diam.	Courses.	Dist.
John W. Whitlock 27, MAR, 1980	X	P.K. Nail			See Tie File		See Remarks pg 254	
" "	W	"			"		"	
" "	V	"			"		"	

# Record of Surveys in Shelby County, Indiana.

Section *P* Township *12* North, Range *7* East.

Date, Intermediate Corners, &c., &c.	Corners.	Stone, Mark, &c.	Acres.	Hund.	Bearings, Trees, &c.	Diam.	Courses.	Dist.	
<p><i>Rock. Surveyor</i></p> <p><i>Apr 3rd 1851</i> <i>For Corners to Robertsons</i> <i>Land. Sec. complete Record.</i> <i>Apr 20th 1852,</i></p>	<b>B</b>	<i>Stone</i>			<i>N-Beech</i>	<i>4</i>	<i>N 77 W</i>	<i>13 1/2</i>	
	<i>Same</i>				<i>Beech</i>	<i>12</i>	<i>N 52 E</i>	<i>12</i>	
					<i>do</i>	<i>4</i>	<i>N 40 W</i>	<i>28</i>	
					<i>do</i>	<i>10</i>	<i>N 24 E</i>	<i>27</i>	
		<b>C</b>			<i>do</i>	<i>20</i>	<i>S 45 W</i>	<i>21</i>	
					<i>do</i>	<i>20</i>	<i>N 37 W</i>	<i>26</i>	
		<b>M</b>			<i>do</i>	<i>5</i>	<i>S 78 W</i>	<i>11</i>	
					<i>Buckeye</i>	<i>9</i>	<i>N 62 E</i>	<i>27</i>	
		<b>N</b>	<i>Boulders</i>			<i>No Hit</i>			
		<b>P</b>	<i>Stone</i>			<i>Maple</i>	<i>20</i>	<i>N 60 E</i>	<i>8</i>
					<i>Elm</i>	<i>10</i>	<i>N 13 E</i>	<i>16</i>	
	<b>Z</b>				<i>Beech</i>	<i>9</i>	<i>N 36 W</i>	<i>19</i>	
					<i>Hickory</i>	<i>9</i>	<i>S 13 E</i>	<i>38</i>	
	<b>X</b>	<i>Boulder</i>			<i>Beech</i>	<i>16</i>	<i>N 28 W</i>	<i>14</i>	
					<i>do</i>	<i>12</i>	<i>S 67 W</i>	<i>34</i>	
	<b>Y</b>	<i>"</i>			<i>do</i>	<i>6</i>	<i>S 43 E</i>	<i>12</i>	
					<i>do</i>	<i>20</i>	<i>N 83 E</i>	<i>30</i>	
	<b>O</b>				<i>No Hit</i>				
<p><i>May 23rd 1866 24 Rods of</i></p> <p><i>48 Rods S of Same</i></p> <p><i>30 " N of</i></p> <p><i>24 Rods South of Same</i></p>	<b>C</b>	<i>Stone</i>			<i>"</i>				
					<i>"</i>				
	<b>N</b>	<i>"</i>			<i>"</i>				
	<b>E</b>	<i>"</i>			<i>"</i>				
					<i>B-Oak</i>	<i>30</i>	<i>S 22 E</i>	<i>33</i>	
					<i>Beech</i>	<i>12</i>	<i>N 9 1/2 E</i>	<i>34 3/4</i>	
					<i>B-Oak</i>	<i>20</i>	<i>S 87 E</i>	<i>4 3/8</i>	



# Record of Surveys in Shelby County, Indiana.

53

Section 8 Township 12 North, Range 7 East.

Date, Intermediate Corners, &c., &c.	Corners.	Stone, Mark, &c.	Acres.	Hund.	Bearings, Trees, &c.	Diam.	Courses.	Dist.
<p>Ap'l 4<sup>th</sup>., 1906.                      Set stone No. One 7 chains 65 1/2 links                      East of                      Set stone No. Two 8 chains 98 8/15                      links East of                      Set stone No. 3 Thirty                      rods north of No. 1                      Set stone No. 4 Thirty                      rods north of No. 2                      James E. Morris, S. S. Co.</p>	<p>P " " "</p>	<p>limestone " boulder limestone</p>			<p>Nowitness " " "</p>			
<p>July 7 1929 made wit for P granite block in culv Headwall                      E. of Stone one marked</p>							<p>N.W. 281'                      S.W. 351'</p>	
<p>John W. Whitlock 27, MAR, 80</p>	<p>Z</p>	<p>P.K. Vail</p>			<p>See Tie File</p>		<p>See Remarks, pg. 234</p>	

# Record of Surveys in Shelby County, Indiana.

Section *9*      Township *12*      North, Range *7*      East.

Date, Intermediate Corners, &c., &c.	Corners.	Stone, Mark, &c.	Acres.	Incl.	Bearings, Trees, &c.	Diam.	Courses.	Dist.
<i>Sept 9th 1850</i>	M				<i>Hickory</i>	<i>5</i>	<i>S 78 E</i>	<i>25</i>
	N				<i>Oak</i>	<i>36</i>	<i>N 60 E</i>	<i>13</i>
	O				<i>Beech</i>	<i>20</i>	<i>S 58 E</i>	<i>27</i>
	S				<i>Ash</i>	<i>5</i>	<i>N 64 N</i>	<i>9</i>
	Y				<i>Oak</i>	<i>9</i>	<i>N 67 E</i>	<i>15</i>
	F				<i>Beech</i>		<i>N 61 N</i>	<i>38</i>
	C				<i>So</i>	<i>16</i>	<i>S 24 N</i>	<i>14</i>
	H				<i>So</i>	<i>10</i>	<i>N 15 E</i>	<i>19</i>
	D				<i>So</i>	<i>14</i>	<i>N 10 E</i>	<i>11</i>
	G				<i>So</i>	<i>10</i>	<i>S 26 E</i>	<i>27</i>
<i>Aug 23rd 1832 - 2 R.S. of  2 Rods West</i>	F				<i>So</i>	<i>8</i>	<i>S 51 E</i>	<i>57</i>
	C				<i>So</i>	<i>7</i>	<i>N 68 E</i>	<i>52</i>
	H				<i>R-Oak</i>	<i>24</i>	<i>N 55 E</i>	<i>3</i>
	D				<i>Beech</i>	<i>16</i>	<i>N 49 E</i>	<i>4</i>
	G				<i>Ash</i>	<i>24</i>	<i>S 55 N</i>	<i>13</i>
	P				<i>Beech</i>	<i>13</i>	<i>N 13 E</i>	<i>24</i>
	V				<i>Column</i>	<i>40</i>	<i>S 61 N</i>	<i>30</i>
	U				<i>Ash</i>	<i>5</i>	<i>N 27 N</i>	<i>3</i>
	L				<i>Boulder</i>			
					<i>2 Stone in V.L.A.G</i>		<i>See old field notes</i>	
				<i>" " and</i>		<i>Stone</i>	<i>E</i>	<i>25</i>
				<i>" " L&amp;P</i>		<i>"</i>	<i>E</i>	<i>13</i>

## Record of Surveys in Shelby County, Indiana.

Section 9

Township 12

North, Range 7

East.

Date, Intermediate Corners, &c., &c.	Corners.	Stone, Mark, &c.	Acres.	Hund.	Bearings, Trees, &c.	Diam.	Courses.	Dist.
SEPT. 2, 1954 FOUND WITNESSES SET BY G.E. OLTMAN, ENGR.	S B P	L Stone Stone }			Beech do S ash ash WITNESS STONE IRON PIN AT SW. COR OF WALK. S. E. NE	16 10 10 10	S 24 W N 15 E N 52 W N 32 W S. E. NE	19 37 1/2 53 33' 33'

# Record of Surveys in Shelby County, Indiana.

Section **10**      Township **12**      North, Range **7**      East.

Date, Intermediate Corners, &c., &c.	Corners.	Stone, Mark, &c.	Acres.	Hund.	Bearings, Trees, &c.	Diam.	Courses.	Dist.
Sept 11 <sup>th</sup> 1847 Sec. Co. R. 60 Rods East of Oct. 24, 1902 set the following	N	Stone	30		SE cor of tract,			
7 chains 50 links North of	Y	Stone	≠		No witness			
7 chains 50 links North of	X	"	"	"	"			
W. H. Isley. S.S.C.								
Nov 6, 1922 Made witnesses for Geo. E. Dillman Co. Surv.	N	Stone						
	X	stone } + on top stones			wit.		SW N.W. NW NE	50 li. 50 li. 2 r. 2 r.
	S	Stone			Beech	16	S 24 W	
	B	stone			do Lash ash	10 10 10	N 15 E N 52 W N 32 W	19 37 1/2
July 25 1941 Made wit. for	C	Stones			lime stone		SW NW }	50 li.
FEB, 1955.	C	IRON PIPE			PROP. COR. POST N.E.		N.E.	43.45'
FOUND BY ST. HY. PARTY					PROP. COR. POST		S.E.	20'

Section 10 Township 12 North, Range 7 East.

Date, Intermediate Corners, &c., &c.	Corners.	Stone, Mark, &c.	Acres.	Hnd.	Bearings, Trees, &c.	Diam.	Courses.	Dist.
FEB 1961 BY Kenneth Bauman SEE PAGE 233	P	STONE	REF		REF. CULV. HEADWALL SW 18.71' " " " NW 24.63			

# Record of Surveys in Shelby County, Indiana.

Section **11**

Township **12**

North, Range **7**

East.

Date, Intermediate Corners, &c., &c.	Corners.	Stone, Mark, &c.	Acres.	Hund.	Bearings, Trees, &c.	Diam.	Courses.	Dist.	
<i>Feb 8th 1858.</i>	<b>C</b>	Stone			As Nit				
	<b>B. D. or H</b>	"			B Elder	10	N	7	
	<b>X</b>	"			Sycamore	8	S 35 E	17	
	<b>W</b>	"			Beech	12	N 48 E	12 1/2	
	<b>N</b>	"			Cherry	2	S 35 E	23 3/4	
	<b>M</b>	"			Beech	14	N 78 E	45	
	<b>L</b>	"			Corn	18	S 22 E	58 3/4	
	<b>V</b>	"			Do	24	N 18 1/2 E	71	
	<b>O</b>	"			Ash	40	N 37 E	12	
	<b>W</b>	Stone			Oak	10	N 11 1/2 N	36 1/2	
	<b>C</b>	Stone			Corn	14	N 36 E	7	
	<b>M</b>	Stone	by old Nit		Hickory	8	S 44 N	22	
	<i>Jno Dargis, Surveyor 31 23 1/2 Chns North of 12 23 Chains East of C. F. Keister Surveyor.</i>	<b>V</b>	"		As Nit				
		<b>O</b>	"		"				
		<b>W</b>	Stone			Stone		N 4 1/2 E	34
<i>John W. Whitbeck</i>	<b>C</b>	Stone			Stone		East	47	
	<b>W</b>	Stone			Stone				
	<b>M</b>	Stone			Oak	10	N 11 1/2 N	36 1/2	
					2 Stones		S 90 N	20	
					2 Do		S 19 E	21	
<i>John W. Whitbeck</i>	<b>D</b>	Stone			See Tie File		See Remarks #234		
<i>"</i>	<b>C</b>	R.R. Spike			"		"		
<i>"</i>	<b>W</b>	Iron Pin			"		"		
<i>"</i>	<b>A</b>	"			"		"		

## Record of Surveys in Shelby County, Indiana.

Section

11

Township

12

North, Range

7

East.

Date, Intermediate Corners, &c., &c.	Corners.	Stone, Mark, &c.	Acres.	Rand.	Bearings, Trees, &c.	Diam.	Courses.	Dist.
John W. Whitlock	L	Stone			See Tie File		See Remarks, pg. 234	

# Record of Surveys in Shelby County, Indiana.

Section *12*      Township *12*      North, Range *7*      East.

Date, Intermediate Corners, &c., &c.	Corners.	Stone, Mark, &c.	Acres.	Bound.	Bearings, Trees, &c.	Diam.	Courses.	Dist.	
<i>Kirkols, Surveyor.</i> <i>Feb 18th 1831</i>  <i>Sept 5th 1839</i>  <i>Jan 16th 1856</i> <i>Dec 22nd 1863</i> - $\frac{1}{2}$ <i>40 1/2 Rods North</i> <i>420 Chus N</i>	D				Beech	14	S 46 E	25	
	E				do	8	N 30 W	13	
	F				do	8	N 30 W	3	
	G				Hickory	20	S 60 W	24	
	H				Beech	20	N 9 E	17	
	I				do	20	S 15 W	33	
	J	Boulder			do	18	S 37 W	22	
	K				N do	4	N 84 E	10	
	L		Stone			do hit			
	M		"			"			
N		"			"				
O		"			"				
P		"			"				
Q		"			"				
R		"			"				
S		"			"				
T		"			"				
U		"			"				
V		"			"				
W		"			"				
X		"			"				
Y		"			"				
Z		"			"				
AA		"			"				
AB		"			"				
AC		"			"				
AD		"			"				
AE		"			"				
AF		"			"				
AG		"			"				
AH		"			"				
AI		"			"				
AJ		"			"				
AK		"			"				
AL		"			"				
AM		"			"				
AN		"			"				
AO		"			"				
AP		"			"				
AQ		"			"				
AR		"			"				
AS		"			"				
AT		"			"				
AU		"			"				
AV		"			"				
AW		"			"				
AX		"			"				
AY		"			"				
AZ		"			"				
BA		"			"				
BB		"			"				
BC		"			"				
BD		"			"				
BE		"			"				
BF		"			"				
BG		"			"				
BH		"			"				
BI		"			"				
BJ		"			"				
BK		"			"				
BL		"			"				
BM		"			"				
BN		"			"				
BO		"			"				
BP		"			"				
BQ		"			"				
BR		"			"				
BS		"			"				
BT		"			"				
BU		"			"				
BV		"			"				
BW		"			"				
BX		"			"				
BY		"			"				
BZ		"			"				
CA		"			"				
CB		"			"				
CC		"			"				
CD		"			"				
CE		"			"				
CF		"			"				
CG		"			"				
CH		"			"				
CI		"			"				
CJ		"			"				
CK		"			"				
CL		"			"				
CM		"			"				
CN		"			"				
CO		"			"				
CP		"			"				
CQ		"			"				
CR		"			"				
CS		"			"				
CT		"			"				
CU		"			"				
CV		"			"				
CW		"			"				
CX		"			"				
CY		"			"				
CZ		"			"				
DA		"			"				
DB		"			"				
DC		"			"				
DD		"			"				
DE		"			"				
DF		"			"				
DG		"			"				
DH		"			"				
DI		"			"				
DJ		"			"				
DK		"			"				
DL		"			"				
DM		"			"				
DN		"			"				
DO		"			"				
DP		"			"				
DQ		"			"				
DR		"			"				
DS		"			"				
DT		"			"				
DU		"			"				
DV		"			"				
DW		"			"				
DX		"			"				
DY		"			"				
DZ		"			"				
EA		"			"				
EB		"			"				
EC		"			"				
ED		"			"				
EE		"			"				
EF		"			"				
EG		"			"				
EH		"			"				
EI		"			"				
EJ		"			"				
EK		"			"				
EL		"			"				
EM		"			"				
EN		"			"				
EO		"			"				
EP		"			"				
EQ		"			"				
ER		"			"				
ES		"			"				
ET		"			"				
EU		"			"				
EV		"			"				
EW		"			"				
EX		"			"				
EY		"			"				
EZ		"			"				
FA		"			"				
FB		"			"				
FC		"			"				
FD		"			"				
FE		"			"				
FF		"			"				
FG		"			"				
FH		"			"				
FI		"			"				
FJ		"			"				
FK		"			"				
FL		"			"				
FM		"			"				
FN		"			"				
FO		"			"				
FP		"			"				
FQ		"			"				
FR		"			"				
FS		"			"				
FT		"			"				
FU		"			"				
FV		"			"				
FW		"			"				
FX		"			"				
FY		"			"				
FZ		"			"				
GA		"			"				
GB		"			"				
GC		"			"				
GD		"			"				
GE		"			"				
GF		"			"				
GG		"			"				
GH		"			"				
GI		"			"				
GJ		"			"				
GK		"			"				



# Record of Surveys in Shelby County, Indiana.

Section *12* Township *12* North, Range *7* East.

Date, Intermediate Corners, &c., &c.	Corners.	Stone, Mark, &c.	Acres.	.Hund.	Bearings, Trees, &c.	Diam.	Courses.	Dist.
<p><i>April 23-1909</i>  <i>survey for Henry Court &amp;</i>  <i>Hepler Set Stone</i></p>	<p><i>S</i></p>	<p><i>Limestone</i>  <i>+ outcrop</i></p>			<p><i>S. P. Harris</i></p>	<p><i>Limestone</i>  <i>S. S. C</i></p>	<p><i>East</i></p>	<p><i>32</i></p>
<p><i>John W. Whitlock</i></p>	<p><i>P</i></p>	<p><i>Stone</i></p>			<p><i>See Tie File</i></p>		<p><i>See Remarks, pg. 234</i></p>	



# Record of Surveys in Shelby County, Indiana.

Section 13

Township 12

North, Range 7

East.

Date, Intermediate Corners, &c., &c.	Corners.	Stone, Mark, &c.	Acres.	Innd.	Bearings, Trees, &c.	Diam.	Courses.	Dist.
<p>1904                      Made survey for                      Miller + Hammerley                      set stone                      S. P. Harris                      S. S. C.</p>	L	limestone			Boulder		South	18
<p>April 14, 1915. Midway between                      In Middle Mich. Road 24.13 Chains North <sup>of above</sup></p>	N & O.	Mark + limestone mark + Limestone			No. Witness Stone		South	45
<p>15.10 Chains North &amp; 2.92 Chains East of                      In Middle of Michigan Road &amp;                      2.92 Chains East and 30.87 Chains North of</p>	O	Stone Mark +			No Witness		South	40
<p>May 25, 1916. Survey as follows:</p>	O	Stone Mark +			Stone		S. P. Harris - by deputy	
<p>19.32 Chains S. of</p>	Y	stone Mark +			Walnut Tree	10	S. 4° W,	54
<p>19.32 Chains South of</p>	N	" " +			Large Boulder		N.	17
	O	" " +			stone		N,	17
					S. P. Harris, S. C. S. - by Deputy			

# Record of Surveys in Shelby County, Indiana.

Section **14**

Township **12**

North, Range **7**

East.

Date, Intermediate Corners, &c., &c.	Corners.	Stone, Mark, &c.	Acres.	Inud.	Bearings, Trees, &c.	Diam.	Courses.	Dist.
<p>Off S. End. <span style="float: right;">1/2 of</span>                      Tickols, Surveyor                      Dec 17th 1850</p>	- P				Beech	6	N 80 E	3
					so	8	S 40 E	37
		L			Walnut	36	S 88 W	2 1/2
					Beech	12	S 45 W	49
		N			so	10	S 65 W	6
					so	9	N 3 1/2 W	40
<p>J. M. Calliott, Surveyor</p>	S	Stone			No Nit			
	U	"			Beech	15	S 53 E	9
					so	8	N 37 W	8
	X	"			so	12	N 47 W	25
<p>John W. Whitlock</p>	O B	Iron Pix			See Tie File		See Remarks, pg. 234	

# Record of Surveys in Shelby County, Indiana.

Section *13* Township *12* North, Range *7* East.

Date, Intermediate Corners, &c., &c.	Corners.	Stone, Mark, &c.	Acres.	Hnd.	Bearings, Trees, &c.	Diam.	Courses.	Dist.	
<p><i>For Jargin, Surveyor</i></p> <p>August 20, 1906 I set</p> <p>and</p> <p>and 2.60 chains South of</p> <p>" 6.75 " West of</p> <p>" 2.60 ch's South 6.75 ch's West of</p> <p style="text-align: right;">W. H. Isley Dep. C. S.</p> <p style="text-align: center;">Wit. for</p> <p style="text-align: center;">" "</p> <p>Failed to find X</p>	O				<i>Beech</i>	<i>14</i>	<i>N 81 W</i>	<i>3</i>	
	Y				<i>do</i>	<i>14</i>	<i>N 25 E</i>	<i>28</i>	
	R				<i>do</i>	<i>30</i>	<i>N 42 E</i>	<i>21</i>	
	Q		<i>Lime Stone</i>			<i>Boulder</i>		<i>S</i>	<i>25</i>
	S		<i>Boulder + S</i>			<i>Large Post</i>		<i>E</i>	<i>32 1/2</i>
	Z		<i>Post</i>			<i>No Wit</i>			
	Z				<i>No Wit</i>				
	Z				<i>Beech</i>	<i>14</i>	<i>N</i>	<i>7 1/2</i>	
	C						<i>NE.</i>	<i>2 r.</i>	
	N						<i>NW.</i>	<i>2 r.</i>	
	X				<i>Set wit. for center of road</i>		<i>NE.</i>	<i>32 r.</i>	
							<i>SE.</i>	<i>32 r.</i>	
							<i>NW.</i>	<i>32 r.</i>	
							<i>NE.</i>	<i>32 r.</i>	



# Record of Surveys in Shelby County, Indiana.

Section *16* Township *12,* North, Range *7* East.

Date, Intermediate Corners, &c., &c.	Corners.	Stone, Mark, &c.	Acres.	Hnd.	Bearings, Trees, &c.	Diam.	Courses.	Dist.
<i>32 7/8 feet and 1/4 inches south of</i>	<i>P.</i>	<i>Stone</i>			<i>No. wit.</i>			
<i>32 9 feet 1/4 inches south of</i>	<i>O</i>	<i>"</i>	<i>2" Deep</i>		<i>"</i>	<i>"</i>		
<i>December 6<sup>th</sup> 1899 found by T. Summerford 5-19-71 Ref: Telephone Pole E 12.6'</i> <i>M. J. Crawford Pwp West 16.6'</i>								



Section 17

Township 12

North, Range 7

East.

Date, Intermediate Corners, &c., &c.	Corners.	Stone, Mark, &c.	Acres.	Land.	Bearings, Trees, &c.	Diam.	Courses.	Dist.
332 Chas C Jan 19 <sup>th</sup> 1869-	N H K	stone " "			No Mt Beech do do	12 12 10	N 83 1/4 E 197 N 34 E 13 S 48 E 13 1/2	

H. H. Miller S. S. C.

Notice of Survey. } Copy,  
 To William C. Thompson, You are hereby notified that  
 on Monday the 24th day of Oct. 1892. I the undersigned shall proceed &  
 with the County Surveyor of Shelby Co. Indiana to locate and establish  
 the line between my 20 <sup>20</sup>/<sub>100</sub> acres of land off the North End of the West half  
 of the North West quarter of Section 17, Township 12 North in range East  
 and your 60 acres lying immediately South of said 20 <sup>20</sup>/<sub>100</sub> acres  
 in said half quarter section, aforesaid, and at the same time  
 and place I will have said County Surveyor, to locate and  
 establish the corner, at the South West corner of my land  
 and the North West corner of your land, in said half quarter  
 section of land above described, between the land owned by  
 myself on the North and you and one William Elliot and  
 myself on the West of said proposed corner to be located and  
 established. Dated this Oct. 14<sup>th</sup> 1892, S. M. Thompson.  
 - William Elliot hereby consent to the above proposed survey and  
 establishment of the lines and corners above described  
 - A notice of which the within is a William Elliot,  
 copy was by me given to W. C. Thompson. 10. A. M. Oct 14, 1892  
 S. M. Thompson

# Record of Surveys in Shelby County, Indiana.

Section **17** Township **12** North, Range **7** East.

Date, Intermediate Corners, &c., &c.	Corners.	Stone, Mark, &c.	Acres.	Hund.	Bearings, Trees, &c.	Diam.	Courses.	Dist.
Vol. 3 <sup>rd</sup>								
Surveyed for S. M. Thompson. Wm. Thompson & Elliott, 20 20 A. off of and N 1/2 of N 1/4. S.W. cor. found a Boulder. Set at 10 10 chms S. of D. which is in the proper place for the S.E. Cor. of said 20 20 acre tract. And set Stone witnesses to the same. See Plat on Page 231. Oct 24 <sup>th</sup> 1892. Lehas. F. Webster Deputy, S. S. County.	10 10 S. q <sup>ch</sup> E	Line Stone 4x6x18 Set in big ditch Boulder Boulder					At 1/2 E 20 1/2 At 9 1/2 R 32	

John W. Whitlock      27, MAR, 80      F      P.K. Nail      See Tie File      See Remarks, pg. 234



Section *10* Township *12* North, Range *7* East.

Date, Intermediate Corners, &c., &c.	Corners.	Stone, Mark, &c.	Acres.	Hund.	Bearings, Trees, &c.	Diam.	Courses.	Dist.
<i>40 Rods East of</i>	<i>O</i>	<i>Stone</i>			<i>No Pit</i>			
	<i>M</i>	<i>L Stone on N+18</i>			<i>Miller, Sumner,</i> <i>Limestone</i>	<i>8</i>		<i>20</i>
	<i>E</i>	<i>Stone mark E</i>			<i>Dugan 88 &amp;c</i>			
	<i>D</i>	<i>Lime " D</i>			<i>No pit available</i>			
	<i>B</i>	<i>" " B+Y</i>			<i>Hickory</i>	<i>18</i>	<i>S 18 E</i>	<i>24</i>
	<i>N</i>	<i>Lime Stone, Dugan's Corner Stone's West</i>			<i>Gum</i>	<i>12</i>	<i>S 73 1/2 W</i>	<i>57</i>
<i>Was found wrong and corrected</i>								<i>37 1/2</i>
<i>Larry Dugan 88 &amp;c April 23<sup>rd</sup> 1877</i>								
<i>Sept. 1880.</i>								
<i>this survey was made to correct the corner as above recorded by Dugan</i>								
<i>I left Dugan's Corner Stone for a witness to my corner,</i>								
<i>Lehas F. Webster Surveyor, S.C.</i>								
<i>John W. Whitlock 23, March, 1877</i>	<i>Y</i>	<i>R. R. Spike</i>			<i>See tie file</i>		<i>See Remarks, pg. 239</i>	
<i>" 27, MAR, 1880</i>	<i>C</i>	<i>P.K. Nail</i>			<i>"</i>		<i>"</i>	
<i>" 23, MAR, 1880</i>	<i>X</i>	<i>Stone</i>			<i>"</i>		<i>"</i>	
<i>" 27, MAR, 1880</i>	<i>M</i>	<i>Iron Pin</i>			<i>"</i>		<i>"</i>	
<i>" " "</i>	<i>B</i>	<i>P.K. Nail</i>			<i>"</i>		<i>"</i>	
<i>" " "</i>	<i>A</i>	<i>"</i>			<i>"</i>		<i>"</i>	

# Record of Surveys in Shelby County, Indiana.

Section *19* Township *12* North, Range *7* East.

Date, Intermediate Corners, &c., &c.	Corners.	Stone, Mark, &c.	Acres.	Hund.	Bearings, Trees, &c.	Diam.	Courses.	Dist.	
<i>Nickols, Surveyor</i>	G				<i>elm</i>	<i>22</i>	<i>N 80 W</i>	<i>20</i>	
	L				<i>Beech</i>	<i>36</i>	<i>N 40 E</i>	<i>17</i>	
					<i>so</i>	<i>15</i>	<i>N 39 E</i>	<i>20</i>	
					<i>so</i>	<i>4</i>	<i>N 81 W</i>	<i>8</i>	
<i>3 9/2 R. of Same Feb 24<sup>th</sup> - 5 9/2 R. of</i>	Z					<i>19</i>	<i>N 70 E</i>	<i>10</i>	
	Y					<i>24</i>	<i>N 14 W</i>	<i>24</i>	
		Same				<i>Hickory</i>	<i>20</i>	<i>E</i>	<i>15</i>
			V				<i>Beech</i>	<i>10</i>	<i>N</i>
<i>Same Nickols, Surveyor, Nov 1831</i>		stone			<i>Ash</i>	<i>12</i>	<i>N 6 1/2 W</i>	<i>9</i>	
					<i>Gum</i>	<i>4</i>	<i>N E</i>	<i>4</i>	
	B				<i>Ash</i>	<i>10</i>	<i>N 33 W</i>	<i>17</i>	
					<i>Hickory</i>	<i>20</i>	<i>N</i>	<i>38</i>	
<i>Elliott, Surveyor, 1833</i>	H				<i>so</i>	<i>2</i>	<i>N 13 E</i>	<i>26</i>	
					<i>Ash</i>	<i>3</i>	<i>N 36 W</i>	<i>12</i>	
	I				<i>Beech</i>	<i>10</i>	<i>N 38 E</i>	<i>11</i>	
					<i>so</i>	<i>9</i>	<i>N 78 1/2 E</i>	<i>62</i>	
<i>M</i>					<i>Ash</i>	<i>4</i>	<i>N 29 E</i>	<i>9</i>	
					<i>so</i>	<i>4</i>	<i>N 35 W</i>	<i>16</i>	
					<i>so</i>	<i>5</i>	<i>N 57 1/2 W</i>	<i>5</i>	
	N				<i>elm</i>	<i>8</i>	<i>N 38 E</i>	<i>7</i>	
<i>O</i>					<i>No Mt</i>				
					<i>Beech</i>	<i>10</i>	<i>N 51 W</i>	<i>24</i>	
<i>Jarvis, Surveyor</i>					<i>so</i>	<i>N 60 W</i>	<i>34</i>		



# Record of Surveys in Shelby County, Indiana.

Section 19 Township 12 North, Range 7 East.

Date, Intermediate Corners, &c., &c.	Corners.	Stone, Mark, &c.	Acres.	Hund.	Bearings, Trees, &c.	Diam.	Courses.	Dist.
29 <sup>18</sup> / <sub>100</sub> Chains W of V	V	L Stone	19		L Stone		E	20
29 <sup>18</sup> / <sub>100</sub> Chains W of V	V	L Stone	19		do		W	27
29 <sup>18</sup> / <sub>100</sub> Chains W of V	V	L Stone	19		Stone		S 54 <sup>18</sup> / <sub>100</sub> W	47
J Dugan 886					do		W	7
3 <sup>64</sup> / <sub>100</sub> chains E + 5 <sup>60</sup> / <sub>100</sub> ch S of M	M	L Stone			Mulberry	16	S 10 <sup>1</sup> / <sub>2</sub> E	28
3 <sup>64</sup> / <sub>100</sub> " " + 11 <sup>20</sup> / <sub>100</sub> " " of "	"	" "			S ash	15	N 60 <sup>1</sup> / <sub>2</sub> E	19 <sup>1</sup> / <sub>2</sub>
3 <sup>64</sup> / <sub>100</sub> " " + 16 <sup>80</sup> / <sub>100</sub> " " of "	"	" "			Hickory	20	S 73 <sup>1</sup> / <sub>2</sub> E	12
3 <sup>64</sup> / <sub>100</sub> " " + 22 <sup>40</sup> / <sub>100</sub> " " of "	"	" "			Elm	22	N 38 <sup>1</sup> / <sub>2</sub> E	15 <sup>1</sup> / <sub>2</sub>
Oct 13/77 Jerry Dugan 534								
4 <sup>76</sup> / <sub>100</sub> chains N + 29 <sup>72</sup> / <sub>100</sub> W of V	V	L Stone			Stone		S 54 <sup>18</sup> / <sub>100</sub> W	47
Aug 30 <sup>th</sup> 1880. Made a survey of the line from corner heretofore established by Elliott see page 224					do		W	7
March 4 - 1903								
59 <sup>1</sup> / <sub>2</sub> rds N + 3.64 ch E of W	W	L Stone			Yum Tree	24	N 80 <sup>1</sup> / <sub>2</sub> W	36 <sup>1</sup> / <sub>3</sub>
3.64 chains E of M	M	L Stone			L Stone		N	21 <sup>1</sup> / <sub>3</sub>
chain copied sworn S. P. Harris S. S. C								
John W. Whitlock	Z	Iron Pin			See Tie File		See Remarks, pg 234	
" 23, March, 1907	D	R.R. Spike			"		"	

## Record of Surveys in Shelby County, Indiana.

Section 19 Township 12 North, Range 7 East.

Date, Intermediate Corners, &c., &c.	Corners.	Stone, Mark, &c.	Acres.	Hnd.	Bearings, Trees, &c.	Diam.	Courses.	Dist.
John W. Whitlock 23, March, '77	O <sup>a</sup>	R.R. Spike			See Tie File		See Remarks, pg 234	
" "	Y	P.K. Nail			"		"	
" "	C	Stone			"		"	
" "	X	Iron Pin			"		"	
" "	Z	Iron Pin		(Set)	"			
" 3/23/77	D	R.R. Spike		(Set)	"			



Section 20

Township 12

North, Range 7

East.

Date, Intermediate Corners, &c., &c.	Corners.	Stone, Mark, &c.	Acres.	Hund.	Bearings, Trees, &c.	Diam.	Courses.	Dist.
Sept 1880, 59½ Rods North of C. S. Helister Survey S. 6.	V N	Large Boulders Stone "			Ash Hackberry Beech So	18 12	N 14 W West East N 14 W	14 32 2 21

# Record of Surveys in Shelby County, Indiana.

Section *21*

Township *12*

North, Range *7*

East.

Date, Intermediate Corners, &c., &c.	Corners.	Stone, Mark, &c.	Acres.	Hurd.	Bearings, Trees, &c.	Diam.	Courses.	Dist.	
	B				Beech	20	N 5° E	13	
					do	22	N 40° W	20	
	W				Sugar	12	N 46° E	3	
					Beech	8	N 10° W	2	
	M				do	8	N 80° W	38	
					do	6	N 30° W	34	
<i>Geo Sargin, Surveyor</i> <i>June 8<sup>th</sup> 1867</i> <i>W. K. Miller, Surveyor</i>	Y	Stone Boulder			No Hit				
	N					N Oak	13	S 54° E	35
	P					Beech	12	N 50° E	89
					<i>F. Holes</i>				
<i>Jan'y 21<sup>st</sup> 1876.</i>									
<i>19 Rods 14 links S. of D</i> <i>19 Rods 14 links S of C</i>		Stone							
		"			Walnut	18	N 3 1/2° E	68	
<i>E. F. Webster, Surveyor</i> <i>27 Rods 44 1/2 S</i>	C	Stone			W Walnut	18	N 87° W	47	
<i>37 Rods S</i>	B	"			No hit or a rail				
<i>19 1/2 chains North</i>	O	Stone ind 0			Stone		N 53 1/2° W	58	
<i>19 1/2 chains North</i>	O	Stone " 7			No hit or a rail				
<i>6 28 1/2 chains North</i>	"	Stone			Stone		E	26	
<i>6 28 1/2 " " of</i>	M	Stone			Beech	15	N 18° W	5 1/4	
<i>19 68 " " of</i>	"	Stone			No Hit or				
<i>19 Rods 14 links S of C</i>	X	Stone ind 0			Stone		E	2 1/2	
<i>19 R 14 L S of C Stone (See above.)</i>		+			Walnut	18	N 3 1/2° E	68	





Section

22

Township

12

North, Range

7

East.

Date, Intermediate Corners, &c., &c.	Corners.	Stone, Mark, &c.	Acres.	Incl.	Bearings, Trees, &c.	Diam.	Courses.	Dist.
For Survey of 23 and 22, made Oct. 15 <sup>th</sup> and 16 <sup>th</sup> 1891, by Norris, Deputy, see page 228.	N. X	U.S. coast & Geod. BM. NW. 37 1/2 ft. Stone NE. 2 ft. Stone SE. 2 ft. SW.						

# Record of Surveys in Shelby County, Indiana.

Section **23** Township **12** North, Range **7** East.

Date, Intermediate Corners, &c., &c.	Corners.	Stone, Mark, &c.	Acres.	Hund.	Bearings, Trees, &c.	Diam.	Courses.	Dist.
<p>Rock, Surveyor, May 22nd 1867</p> <p>3/4 R 5 S of</p> <p>Name S. Norris, Surveyor Oct 2nd 1876; This Survey was made to correct a Survey made by Sugar, by agreement between, Geo. Worland, William Worland and John Lantz. Sugar's Corners were taken up, and new Corners set. Chas. F. Helster, Surveyor.</p> <p>at 23<sup>rd</sup> 1877 of Sugar's S.E.</p>	V	"			F. Notes			
	L	Boulder			W-Cedar	2	N 10° E	10
	M	Long "			B-Oak	18	N 53 1/2° W	3 1/2
					Beech	12	N 57° W	80
					do	30	N 74 1/2° E	132 1/2
		W			Long Boulder	8	N 6 1/2° W	69
		M	Line "		Yum	12	N 63 1/2° W	64
					Ash	6	N 88 1/2° W	63
		L	Boulder		B-Oak	33	S 6° W	45 1/2
		O	Large Stone		W-Cedar	36	S 25 1/2° E	64 1/2
	Z	Stone		Stone		S 44 3/4° E	53	
				do		N 12 1/2° W	22 1/4	
				Red Cedar	15	S 24 1/2° W	70	
				Walnut	10	S 45° W	71	
				Stone		N 38° E	32 1/2	
	P	Stone		Poplar	30	S 55 1/2° E	67	
				Poplar Stump		N 77° E	94	
				Stone		S 42 1/2° W	30 1/3	
	L	Stone						
	P	" "						
	O	" "						
						36	S 20° E	37
					Mulberry	10	S 57° W	27
					ash	20	N 67 1/2° E	117
					ash	20	N 67 1/2° E	117

# 142 Record of Surveys in Shelby County, Indiana.

Section *23* Township *12* North, Range *7* East.

Date, Intermediate Corners, &c., &c.	Corners.	Stone, Mark, &c.	Acres.	Hnd.	Bearings, Trees, &c.	Diam.	Courses.	Dist.
<i>For Survey of Sections 23 and 22 made</i>	<i>Oct. 15<sup>th</sup> and 16<sup>th</sup> 1891</i>	<i>by Morris Deputy see page</i>	<i>228.</i>					
<i>March 18. 1914 · C. E. O.</i>								
<i>Set limestone 11.67 Ch. S of</i>	<i>A</i>	<i>Stone</i>			<i>wit stone</i>		<i>N</i>	<i>24 1/2</i>
<i>" " " 11.67. " "</i>	<i>B</i>	<i>Stone</i>			<i>stone</i>		<i>S. 58 E.</i>	<i>21 1/2</i>

# Record of Surveys in Shelby County, Indiana.

147

Section *24*

Township *12*

North, Range *7*

East.

Date, Intermediate Corners, &c., &c.	Corners.	Stone, Mark, &c.	Acres.	Hund.	Bearings, Trees, &c.	Diam.	Courses.	Dist.
	D				Beech	17	N 5° N	2
					do	20	N 25° E	21
	O				Ash	27	E	17
					do	26	N 85° N	38
	N				Beech	12	N 20° E	10
					do	9	N 80° E	5
	M				do	30	N	11
					Hickory	12	N 3° E	11
	B				Beech	30	N 12° N	22
					do	20	N 25° E	21
	G.	"			do	6	N 38° E	11
					Gum	20	N 35° E	11
	H	"			Beech	18	N 22° E	12
					do	10	N 5° E	30
	N	Boulder			Red-Oak	20	N 24° N	105
					B-Oak	16	N 8° 30' E	91
	C.	do M. 13.			Boulder		North	100

*Geo. Sargin, Surveyor*  
*May 26<sup>th</sup> 1870*  
*534 ~~13~~ Ches Co of*  
*Le. F. Webster, Surveyor*  
*Nov. 20, 1885,*  
*Le. F. Webster, Deputy.*

# Record of Surveys in Shelby County, Indiana.

Section **25** Township **12** North, Range **7** East.

Date, Intermediate Corners, &c., &c.	Corners.	Stone, Mark, &c.	Acres.	Innd.	Bearings, Trees, &c.	Diam.	Courses.	Dist.
	D				Beech	16	S	35
					do	14	S 82 E	29
	O				elm	18	S 75 W	22
					Beech	18	S 55 E	25
P. R. A.	L				do	14	S 8 E	40
	Same				Ash	10	S 48 1/2 W	21 1/2
					do	11	S 20 E	46
					elm	36	S 31 1/2 W	22 1/2
	N				Beech	24	S	22 1/2
					do	10	S 8 1/2 W	27 1/2
Rock, Surveyor	M				S-Ash	22	S 21 1/2 E	50
July 24 <sup>th</sup> 1834					W-Oak	12	S 43 1/2 W	34
	H	Stone			do Nit			
	S	Stone			"			
	R	"			Ash	8	S 32 E	14
					Beech	8	S 74 E	18
3 75 Chas West	M				do	10	S 9 E	68
Same W	W				Oak	30	S 3 E	74
Sargis, Surveyor.					do Nit			
	X	Stone			Boulder		S 41 1/2 W	36
		Boulder			Stone		S 56 W	50
	Z	L "			do		S 27 E	30
Crossis, Surveyor					Kenge "		S 40 E	10

Section 25

Township 12

North, Range 7

East.

Date, Intermediate Corners, &c., &c.	Corners.	Stone, Mark, &c.	Acres.	Hnd.	Bearings, Trees, &c.	Diam.	Courses.	Dist.
Torriss, Surveyor	P	L-Stone			L-Stone		S 36 1/2 N	53
					SO		S 34 E	53
May 25 <sup>th</sup> 1870 - 50 chus by	C	"			B-Oak	20	S 33 N	46
					SO		S 40 N	33
500 Chus N of	H	"			Stone		S 88 N	20
If find both of these stones have been moved. X	P. O	Stones			SO		S 85 E	20
	A	Stone			Stone		Nt all right	
					C. F. Webster, Surveyor		Nt See field notes	
Found Dec 1982 SW	V	STONE						
" " "	C	"						

# Record of Surveys in Shelby County, Indiana.

159

Section *26*

Township *12*

North, Range *7*

East.

Date, Intermediate Corners, &c., &c.	Corners.	Stone, Mark, &c.	Acres.	Hund.	Bearings, Trees, &c.	Diam.	Courses.	Dist.
<i>Haendricks, Surveyor Oct 31st 1855</i>	<b>N</b>	<i>stone</i>			<i>Bugart</i>	<i>18 ct</i>		<i>8</i>
	<b>C.O.D.</b>	<i>" S</i>			<i>Beech</i>	<i>10</i>	<i>27 1/2</i>	<i>7</i>
<i>Gargin, Surveyor May 25th 1870</i>	<b>X.H.W.</b>	<i>"</i>			<i>no hit</i>			
	<b>Y</b>	<i>"</i>			<i>"</i>			
<i>In Centre of Road &amp; in good order.</i>	<b>I</b>	<i>"</i>			<i>stone</i>		<i>ct 20 Co</i>	<i>63</i>
	<b>M B</b>	<i>" "</i>			<i>so</i>		<i>ct 34 Co</i>	<i>43</i>
<i>55 Rods South of 55 Rods South of 50 Rods North of 50 Rods North of 960/100 chains West of 960/100 West and 12550/100 chains North Chairman and Flagmen Herman Fischer Jo Fischer Wm Biddinger and Bogart J Dugan Surveyor July 6th 1891</i>	<b>T</b>				<i>no hit</i>			
	<b>M</b>	<i>stone</i>			<i>no wit available</i>			
	<b>O</b>	<i>stone</i>			<i>" "</i>	<i>"</i>		
	<b>W</b>	<i>stone</i>			<i>" "</i>	<i>"</i>		
	<b>Y</b>	<i>stone</i>			<i>" "</i>	<i>"</i>		
	<b>W</b>	<i>stone</i>			<i>" "</i>	<i>"</i>		
	<b>W</b>	<i>stone</i>			<i>" "</i>	<i>"</i>		
<i>John W. Whitlock 12, Nov. 1927</i>	<b>Z</b>	<i>P.K. Nails</i>			<i>See Tie File</i>		<i>See Remarks, pg. 234</i>	

*W. F. Webster, Surveyor.*



# Record of Surveys in Shelby County, Indiana.

171

Section *27*

Township *12*

North, Range *7*

East.

Date, Intermediate Corners, &c., &c.	Corners.	Stone, Mark, &c.	Acres.	Land.	Bearings, Trees, &c.	Diam.	Courses.	Dist.
	<i>D</i>				<i>Beech</i>	<i>20</i>	<i>S 10 E</i>	<i>35</i>
					<i>do</i>	<i>18</i>	<i>N</i>	<i>25</i>
	<i>G</i>				<i>R-Bud</i>	<i>3</i>	<i>N 74 W</i>	<i>29</i>
					<i>N-Beech</i>	<i>6</i>	<i>S 86 W</i>	<i>26</i>
	<i>M</i>				<i>Beech</i>	<i>20</i>	<i>S 35 E</i>	<i>3</i>
					<i>do</i>	<i>15</i>	<i>N 3 W</i>	<i>17</i>
	<i>O</i>				<i>do</i>	<i>20</i>	<i>N 40 E</i>	<i>21</i>
					<i>Sugar</i>	<i>20</i>	<i>N 75 E</i>	<i>77</i>
	<i>I</i>				<i>Beech</i>	<i>18</i>	<i>N 17 E</i>	<i>8</i>
					<i>do</i>	<i>21</i>	<i>S 24 W</i>	<i>24</i>
	<i>L</i>				<i>do</i>	<i>12</i>	<i>N 60 W</i>	<i>38</i>
					<i>Sugar</i>	<i>2</i>	<i>S 12 W</i>	<i>22</i>
	<i>P. Q.</i>	<i>Stones</i>			<i>do</i>			
<i>Rock</i>								
<i>Surveyor</i>	<i>12</i>	<i>of</i>						
<i>Off. of S. Side. N. H. of N. C.</i>								
<i>Elliott, Surveyor.</i>								
<i>Aug 13<sup>th</sup> 1836</i>								
	<i>P-Z</i>	<i>Corner</i>	<i>13</i>	<i>1/3</i>				
		<i>Stones</i>						
	<i>N.Y.</i>							
	<i>T</i>	<i>Stone</i>			<i>ash</i>	<i>4</i>	<i>N 37 W</i>	<i>15</i>
					<i>do</i>	<i>6</i>	<i>N 77 W</i>	<i>24</i>
					<i>As not available</i>			
	<i>I</i>	<i>Stone</i>			<i>Beech</i>	<i>24</i>	<i>S 78 1/2 E</i>	<i>62</i>
	<i>G</i>	<i>"</i>			<i>Sycamore</i>	<i>20</i>	<i>N 73 E</i>	<i>48</i>

*20 Rods N*  
*May 2<sup>nd</sup> 1884*  
*Geo. C. Murphy S.S.C.*



# Record of Surveys in Shelby County, Indiana.

173

Section *28* Township *12* North, Range *7* East.

Date, Intermediate Corners, &c., &c.	Corners.	Stone, Mark, &c.	Acres.	Hund.	Bearings, Trees, &c.	Diam.	Courses.	Dist.
<i>John W. Whitlock</i> <i>19, MAR, 1879</i> <i>"</i> <i>"</i>	<i>Z</i> <i>X</i>	<i>Iron Pin</i> <i>"</i>			<i>See Tie File</i> <i>"</i>		<i>See Remarks, pg. 239</i> <i>"</i>	

# Record of Surveys in Shelby County, Indiana.

177

Section **29**

Township **12**

North, Range **7**

East.

Date, Intermediate Corners, &c., &c.	Corners.	Stone, Mark, &c.	Acres.	-land.	Bearings, Trees, &c.	Diam.	Courses.	Dist.
	H				Gum	30	S	1
	M				Beech	12	cr	11
	W				do	20	cr 73 1/2 E	20
	B				do	20	S 53 1/2 W	23
	T				Ash	6	S	1
	Z				do	5	S 60 E	14
	N				Beech	20	E	6 1/2
					Hickory	20	S	4
					Oak	4	cr 76 E	18
Rock, Surveyor								
Sept 15 <sup>th</sup> 1852	Z	Boulder			Oak	6	S 25 E	24
Calliart, Surveyor	N	Stone			Ash	14	cr 45 E	30
Sept - 1855					do	4	cr 70 W	67
Off. N. Side Crk N. E. Cr					R-Oak		S 70 W	67
D. H. Conner		"	60		No Nit			
cr N "		"			"			
8 Rods 11 Mts North of	T	Stone	Mark	72 x 7 1/2				
John W. Whitlock	V	Iron Pin			See Tie File		See Remarks, pg 234	

# Record of Surveys in Shelby County, Indiana.

Section *30*

Township *12*

North, Range *7*

East.

Date, Intermediate Corners, &c., &c.	Corners.	Stone, Mark, &c.	Acres.	Hund.	Bearings, Trees, &c.	Diam.	Courses.	Dist.
<i>Apr 4<sup>th</sup> 1854</i>	Y				<i>W- Ash</i>	<i>14</i>	<i>N 21 E</i>	<i>29</i>
	O				<i>Beech</i>	<i>12</i>	<i>N</i>	<i>32</i>
	W				<i>oak</i>	<i>24</i>	<i>N 26 W</i>	<i>10</i>
	M				<i>Beech</i>	<i>8</i>	<i>N 40 E</i>	<i>21</i>
	I				<i>do</i>	<i>14</i>	<i>E</i>	<i>10</i>
	H				<i>J. Wood</i>	<i>4</i>	<i>N 7 E</i>	<i>8</i>
	X				<i>Beech</i>	<i>14</i>	<i>N 7 E</i>	<i>8</i>
	K				<i>do</i>	<i>18</i>	<i>N 62 E</i>	<i>16<sup>9</sup></i>
	L				<i>do</i>	<i>22</i>	<i>N 16 E</i>	<i>15</i>
	N				<i>do</i>	<i>10</i>	<i>N 67 W</i>	<i>23</i>
<i>Dec 10<sup>th</sup> 1851</i> <i>Calliatt, Surveyor</i> <i>Sept 4<sup>th</sup> 1835</i>	H				<i>do</i>	<i>10</i>	<i>N 18 W</i>	<i>16</i>
	X	<i>Stone</i>			<i>No Hit</i>			<i>33</i>
	L	"			<i>"</i>			
	K	"			<i>Ash</i>	<i>4</i>	<i>N 31 E</i>	<i>13</i>
<i>1/2 of</i> <i>1/2 of</i> <i>Off. of S. E. Cor. of E. 1/2 of S. E. 1/4</i> <i>N. W. Cor. &amp; also S. W. Cor</i>	N	"			<i>Beech</i>	<i>10</i>	<i>N 3 W</i>	<i>22</i>
	L-M	"			<i>No Hit</i>			
	T-U	"			<i>"</i>			
	T-U	"			<i>"</i>			
		<i>Stones</i>		<i>17</i>	<i>"</i>			
					<i>Geo. Jurgin Surveyor</i>			

Section 30 Township 12 North, Range 7 East.

Date, Intermediate Corners, &c., &c.	Corners.	Stone, Mark, &c.	Acres.	Und.	Bearings, Trees, &c.	Diam.	Courses.	Dist.
20 <sup>15</sup> / <sub>100</sub> Chains N of	L	Stone m 7+13			Stone		N 17 E	60
4 <sup>16</sup> / <sub>100</sub> Chains E of the above	L	" " 4+16			no wit available			
9 <sup>15</sup> / <sub>100</sub> Chains N of	L	" " 7			Stone		E	40
10 <sup>15</sup> / <sub>100</sub> Chus South of	E	Stone	no wit					
21 <sup>20</sup> / <sub>100</sub> Chus South of	E	"	"					
9 <sup>00</sup> / <sub>100</sub> Chus South of	C	"	"					
17 <sup>25</sup> / <sub>100</sub> Chus South of	C	"	"					
9 <sup>34</sup> / <sub>100</sub> Chus S 15 <sup>1</sup> / <sub>2</sub> W from	D	"			Set in line with Telegraph Poles			
10 <sup>52</sup> / <sub>100</sub> Chus S 15 <sup>1</sup> / <sub>2</sub> W "	"	"	"		"		"	
1884 " " "	"	"	"		"		"	
21 <sup>95</sup> / <sub>100</sub> " " "	"	"	"		"		"	
In Partition of McKinney Estate C. F. Webster Survey, &c.								
February 10 <sup>th</sup> 1898.								
C to E 41.87 ch. C to A 40.20 ch	C	Stone + on top			Stone		South	22 <sup>1</sup> / <sub>2</sub>
B to M 40.68 ch. C to A 40.84 ch.	B	Stone + on top			Stone		South	22 <sup>1</sup> / <sub>2</sub>
	I	Stone in of fence E & W. Walnut				2 <sup>in</sup>	A E	2 <sup>1</sup> / <sub>2</sub>
10.00 ch West of	L	Stone do wit						
10.00 ch West & 34 Links South of	K	Stake						
For James M <sup>c</sup> Carsty, Et al.	H	Boulder			Coffernut	18	S 50 E	24 <sup>1</sup> / <sub>2</sub>

C. F. Webster, S. J. C.

# Record of Surveys in Shelby County, Indiana.

185

Section 32 Township 12 North, Range 7 East.

Date, Intermediate Corners, &c., &c.	Corners.	Stone, Mark, &c.	Acres.	Hund.	Bearings, Trees, &c.	Diam.	Courses.	Dist.
<p>Found Stone</p> <p>Millard F Crawford April 10, <sup>th</sup> 1901</p>	<p>C.</p>	<p>Correct.</p>						
<p>10.18 1/2 chains N. of 10.09 1/2 chains N. of June 10-1903. S. P. Harris S. S. B</p>	<p>V W Should be in sec 25-12-6</p>	<p>Stone mark do.</p>			<p>No Wit No Wit.</p>			
<p>1.66 2/3 chains N. and 6.20 chains W. of 10.19 chains N. and 6.20 chains W. of May 25-1903 S. P. Harris S. S. B</p>	<p>V V Should be in sec 25-12-6</p>	<p>Stone Stone</p>			<p>No Wit. No Wit.</p>			
<p>Oct. 13-1903. S. P. Harris S. S. B. For Lewis McCarty et al.</p>	<p>W</p>	<p>Stone</p>			<p>Boulder</p>		<p>East</p>	<p>7 1/2</p>

Section 30 Township 12 North, Range 7 East.

Date, Intermediate Corners, &c., &c.	Corners.	Stone, Mark, &c.	Acres.	Hund.	Bearings, Trees, &c.	Diam.	Courses.	Dist.
11 $\frac{96}{100}$ chains East of	C	limestone x			no wit			
15 $\frac{84}{100}$ chains East of	C	limestone x			no wit			
11 $\frac{96}{100}$ chains East of	H	limestone x			no wit			
15 $\frac{84}{100}$ chains East of	H	limestone x			no wit			
7 $\frac{24}{100}$ chains West of	C	limestone x			no wit			
14 $\frac{47}{100}$ chains west of	C	limestone x			no wit			
9 $\frac{8}{100}$ chains South and								
7 $\frac{24}{100}$ chains <del>west</del> East of	C	limestone x			no wit			
9 $\frac{8}{100}$ chains South and								
14 $\frac{49}{100}$ chains <del>west</del> East of	C	limestone x			no wit			

October 16 - 1916

S. P. Harris  
Surveyor Shelby Co  
Partition of Swinford est

J. J. Swinford and  
Sylvanus Swinford  
Chain carriers

July 18 1947 Set Stone for Z  
G. E. O.

Stone wit. 5. 22 li.

# Record of Surveys in Shelby County, Indiana.

187

Section 30 Township 12 North, Range 7 East.

Date, Intermediate Corners, &c., &c.	Corners.	Stone, Mark, &c.	Acres.	Hnd.	Bearings, Trees, &c.	Diam.	Courses.	Dist.
John W. Whitlock	E	Iron Pin			See Tie File		See Remarks, pg. 234	
" 23, Mar, 1922	D	P.K. Nail			"		"	
" "	C	Iron Pin			"		"	

# Record of Surveys in Shelby County, Indiana.

189

Section *B1* Township *12* North, Range *7* East.

Date, Intermediate Corners, &c., &c.	Corners.	Stone, Mark, &c.	Acres.	Hund.	Bearings, Trees, &c.	Diam.	Courses.	Dist.
	K				Beech	18	N	3 1/2
	I				do	20	S 60 W	28 1/2
	L. V. Z.				Hickory	9	N 70 W	18
	H				Maple	22	N	11
	E	stones			No Hit			
	M	"			Hickory	18	S 18 W	66
	N	"			do	16	N 28 E	4
	O	"			Beech	8	S 20 W	21
	P	"			Mulberry	8	N 43 E	8 1/4
	R	"			Ash	5	S 7 1/2 E	25
	S. U. V.	"			do	3	S 41 E	14
	T	"			Beech	16	S 89 W	46
	X	"			Elm	36	N 53 W	70
	Y	"			Beech	8	N 38 E	11
		"			Gum	9	S 19 1/2 E	47
		"			No Hit			
		"			"			
		"			Ash	12	N	16
		"			Beech	10	S 80 E	22
		"			H Walnut	8	S 71 E	71
		"			Ash	10	N 39 E	148 1/2
		"			Oak	30	N 26 E	97 1/2
		"			Beech	19	N 66 1/2 W	33

Section *B/1*Township *12*North, Range *7*

East.

Date, Intermediate Corners, &c., &c.	Corners.	Stone, Mark, &c.	Acres.	Hund.	Bearings, Trees, &c.	Diam.	Courses.	Dist.
<i>Ed Minchel Surveyor</i>	<i>W</i>	<i>Stone</i>			<i>No Wit</i>			
	<i>1/2 of</i>	<i>B-C</i>	<i>Boulder</i>		<i>No Wit.</i>			
	<i>1/2 of</i>	<i>M-N</i>	<i>L. Stone</i>		<i>"</i>			
<i>Oct. 13-1903</i>	<i>W</i>	<i>L. Stone</i>			<i>Boulder</i>		<i>East 7 1/3</i>	
<i>S. P. Harris</i>	<i>For Lewis McCarty et al.</i>							
<i>S. S. C</i>								
<i>May 10, 1904. I set the following corners for N. line of land of Floyd McCarty</i>								
<i>19<sup>25</sup> chains north of</i>	<i>Y</i>	<i>Lime stone</i>			<i>Boulder</i>		<i>East 30</i>	
<i>19<sup>25</sup> " " "</i>	<i>X</i>	<i>Mark +</i>			<i>Hackberry</i>	<i>5</i>	<i>S 79 1/2 W. 14 1/2</i>	
<i>also witness for</i>	<i>Y</i>	<i>stone</i>			<i>Line stone</i>		<i>N 52 W 50</i>	
<i>S. P. Harris S. S. C</i>		<i>Mark +</i>			<i>Mark W</i>			
<i>July 18, 1907 set stone for E. G. E. O</i>					<i>Stone wit. S 22 li.</i>			

# Record of Surveys in Shelby County, Indiana.

195

Section *22*

Township *12*

North, Range *7*

East.

Date, Intermediate Corners, &c., &c.	Corners.	Stone, Mark, &c.	Acres.	-lund.	Bearings, Trees, &c.	Diam.	Courses.	Dist.
	<i>N</i>				<i>Beech</i>	<i>24</i>	<i>18 78 E</i>	<i>16</i>
					<i>do</i>	<i>17</i>	<i>18 8 E</i>	<i>32 1/2</i>
	<i>Q</i>				<i>do</i>	<i>17</i>	<i>18 15 E</i>	<i>21</i>
					<i>Sugar</i>	<i>4</i>	<i>18 43 N</i>	<i>26</i>
	<i>R</i>				<i>Wood</i>	<i>2</i>	<i>18 73 E</i>	<i>33</i>
<i>Nickols, Surveyor</i>					<i>Beech</i>	<i>13</i>	<i>18 82 N</i>	<i>33</i>
<i>Sept 11th 1850 - Jan 6 1866</i>	<i>O</i>	<i>Boulder</i>			<i>do</i>	<i>18</i>	<i>18 16 1/2 N</i>	<i>114</i>
<i>17<sup>th</sup> 58 1/2 R, E</i>		<i>of same</i>			<i>Ash</i>	<i>6</i>	<i>E</i>	<i>29 1/2</i>
					<i>Box Elder</i>	<i>8</i>	<i>18 11 N</i>	<i>30 1/2</i>
<i>43. R. &amp;</i>		<i>of same</i>			<i>Beech</i>	<i>16</i>	<i>18 26 1/2 E</i>	<i>64</i>
<i>Elliott, Surveyor,</i>					<i>do</i>	<i>20</i>	<i>18 32 N</i>	<i>70</i>
<i>Feb 7th 1862</i>	<i>V</i>	<i>"</i>			<i>Ash</i>	<i>8</i>	<i>18 12 E</i>	<i>122</i>
					<i>Wycamore</i>	<i>40</i>	<i>18 32 E</i>	<i>129 1/4</i>
	<i>W</i>	<i>Stone</i>			<i>Stone</i>		<i>18 15 N</i>	<i>33</i>
					<i>do</i>		<i>18 36 E</i>	<i>37</i>
	<i>X</i>	<i>"</i>			<i>H-elm</i>	<i>30</i>	<i>18 25 1/2 E</i>	<i>30</i>
					<i>Beech</i>	<i>24</i>	<i>18 34 1/2 E</i>	<i>134 1/2</i>
<i>16. R. E</i>		<i>of same</i>			<i>Ash</i>	<i>27</i>	<i>18 23 E</i>	<i>60 1/2</i>
					<i>Beech</i>	<i>20</i>	<i>18 39 1/2 N</i>	<i>69</i>
	<i>S.</i>	<i>"</i>			<i>Sugar</i>	<i>26</i>	<i>18 17 1/2 E</i>	<i>56 1/2</i>
					<i>Beech</i>	<i>15</i>	<i>18 7 E</i>	<i>116</i>
<i>30. R.</i>		<i>of</i>			<i>Stone</i>		<i>18 76 N</i>	<i>15</i>
	<i>W.</i>	<i>"</i>			<i>do</i>		<i>18 14 E</i>	<i>18</i>



# Record of Surveys in Shelby County, Indiana.

201

Section *B E*

Township *12*

North, Range *7*

East.

Date, Intermediate Corners, &c., &c.	Corners.	Stone, Mark, &c.	Acres.	Innd.	Bearings, Trees, &c.	Diam.	Courses.	Dist.
	N				Bleech	24	N	11
					So	12	E	15
	M				So	10	N 40 N	23
					So	10	N 65 E	34
	Y				So	10	N 6 E	6
					S Wood	3	S 88 N	16
	O.				Walnut	15	S 10 E	29
					Oak	14	S 27 N	21
<i>Chickels, Surveyor</i>					No Nit			
<i>Sept 10<sup>th</sup> 1856</i>	B. L.	Stones						
	E. D.	"						
	P	"						
	M	"						
<i>Geo J. J. J. Surveyor</i>					Chickory	3	N 4 N	17
					Elm	36	E	34
	X	Stone mk			Stone mk wit		S 43 1/2 W	41
<i>63 R + 24 Links E of</i>	"	" " 12			Stone .. wit		S 30 W	36
<i>94 R + 14 Links E of</i>	"	" " 7			W oak		S. W	86
<i>63 R + 24 Links E of</i>	M	" " 12			R Elm	20	S 74 W	142
<i>94 R + 14 Links E of</i>	"	" " 7			Elm	24	S 11 W	46
<i>March 16<sup>th</sup> 1877 Jerry Suganess</i>	Y	Stone mk			S Stone		N 24 1/2 E	22 1/2
<i>1382 Chain N of</i>	"	" " "			" "		N 6 E	24
<i>1382 " " of</i>	X	" "			No Nit available			

Section 33 Township 12 North, Range 7 East.

Date, Intermediate Corners, &c., &c.	Corners.	Stone, Mark, &c.	Acres.	Hund.	Bearings, Trees, &c.	Diam.	Courses.	Dist.
John W. Whitlock 19, MAR, 1929 " " "	F C	Iron Pin "			See Tie File "		See Remarks, p. 234 "	

# Record of Surveys in Shelby County, Indiana.

207

Section *34*

Township *12*

North, Range *7*

East.

Date, Intermediate Corners, &c., &c.	Corners.	Stone, Mark, &c.	Acres.	Hund.	Bearings, Trees, &c.	Diam.	Courses.	Dist.	
<p><i>Keendricks, Surveyor,</i> <i>Oct 31st 1831</i></p>	D				Beech	10	ct 8 N	19	
	N				So	4	S	25	
	O				So	12	N	11	
	L				So	12	ct 60 E	31	
	M				So	10	ct 82 N	17	
	W				So	12	ct 20 N	14	
	X				So	7	ct 29 E	19	
	Y				So	20	S 84 N	31	
	V		Boulder			So	12	S 85 N	21
	U					Calm	4	S 67 E	14
	T					Beech	12	ct 3 E	82
	S					Hickory	20	ct 28 N	78
	R		Stone			Beech	24	S 20 N	61
	Q					So	20	S 4 E	76
P					S-Ash	14	S 27 1/2 E	77	
O					Hickory	4	S 25 N	66	
N		Stone			Beech	4	ct 3 1/2 N	71	
M					So	18	ct 25 1/2 E	79	
L					So	12	ct 3 E	82	
K					Hickory	20	ct 28 N	78	
J					no wit available				
I					"	"	"		
H					"	"	"		
G		Stone							
F		"							
E									
D									
C									
B									
A									

*Calliatt, Surveyor*  
*976 chains W*  
*967 " W*  
*of of*

# 208 Record of Surveys in Shelby County, Indiana.

Section *34* Township *12* North, Range *7* East.

Date, Intermediate Corners, &c., &c.	Corners.	Stone, Mark, &c.	Acres.	Hund.	Bearings, Trees, &c.	Diam.	Courses.	Dist.
<p>Nov 2<sup>nd</sup> 1877 Jerry Bugansse</p>	<p><b>F</b> <b>G</b></p>	<p>Stone "</p>			<p>B Walnut 10 no mt available</p>		<p>N 53 W 24</p>	
<p>1905 Relocated Set stone 1/2 of T to U " " " " V " W James E. Morris, S.S. Geo.</p>	<p><b>U</b></p>	<p>boulder</p>			<p>no witness " "</p>			
<p>Relocated Sept 16 - 1944</p>	<p><b>N</b></p>	<p>limestone</p>			<p>Limestone</p>		<p>SW, NW.</p>	<p>2 rds. 2 rds.</p>
<p>John W. Whitlock 12, Nov, 1977 " " "</p>	<p><b>C</b> <b>A</b></p>	<p>P.K. Nails "</p>			<p>See Tie File "</p>		<p>See Remarks, pg. 234 "</p>	

# Record of Surveys in Shelby County, Indiana.

213

Section *33*

Township *12*

North, Range *7*

East.

Date, Intermediate Corners, &c., &c.	Corners.	Stone, Mark, &c.	Acres.	Hund.	Bearings, Trees, &c.	Diam.	Courses.	Dist.
<i>Jan'y - 1854 -</i>	<i>M-Z</i>	<i>Stones</i>			<i>No Nit</i>			
	<i>B.</i>				<i>Beech</i>	<i>7</i>	<i>N 87 W</i>	<i>16</i>
					<i>Ash</i>	<i>15</i>	<i>E</i>	<i>31</i>
	<i>D</i>				<i>Beech</i>	<i>10</i>	<i>E</i>	<i>48</i>
					<i>So</i>	<i>24</i>	<i>S 70 W</i>	<i>27</i>
		<i>O</i>			<i>So</i>	<i>6</i>	<i>N 50 E</i>	<i>20</i>
<i>Geo. Jargin, Surveyor.</i>	<i>N</i>				<i>So</i>	<i>12</i>	<i>S 4 E</i>	<i>13</i>
					<i>Hickory</i>	<i>10</i>	<i>S 20 W</i>	<i>20</i>
					<i>So</i>	<i>16</i>	<i>N 3 E</i>	<i>15</i>
<i>Oct 31st 1854</i>	<i>Y</i>	<i>L Stone</i>			<i>No Nit</i>			
	<i>Y-O</i>	<i>"</i>	<i>60</i>		<i>Beech</i>	<i>8</i>	<i>S 55 W</i>	<i>16</i>
		<i>"</i>	<i>"</i>		<i>So</i>	<i>10</i>	<i>N 20 E</i>	<i>13 1/2</i>
<i>Elliott, Surveyor.</i>	<i>Z-P</i>	<i>"</i>	<i>"</i>		<i>So</i>	<i>16</i>	<i>N 22 W</i>	<i>16</i>
					<i>Ash</i>	<i>6</i>	<i>S 37 E</i>	<i>22</i>
<i>May 24th 1867</i>	<i>C</i>	<i>Boulder</i>			<i>No Nit</i>			
					<i>Miller, Surveyor</i>			
<i>Mar. 28th, 1905 - Established stone</i>	<i>E</i>	<i>Boulder</i>						
<i>74 rods 2 1/2 links south of</i>	<i>C</i>	<i>"</i>			<i>Beech</i>	<i>18</i>	<i>Slightly S.E.</i>	<i>34 ft.</i>
<i>Also 74 rds. 2 1/2 links south of</i>					<i>James C. Norris, S. C. Surveyor.</i>			
<i>John W. Whitlock. 12, Nov, '77</i>	<i>E</i>	<i>A.K. Nails</i>			<i>See Tie File</i>		<i>See Remarks, pg. 234</i>	

# Record of Surveys in Shelby County, Indiana.

219

Section *36* Township *12* North, Range *7* East.

Date, Intermediate Corners, &c., &c.	Corners.	Stone, Mark, &c.	Acres.	Hund.	Bearings, Trees, &c.	Diam.	Courses.	Dist.
<i>March 23rd 1893,</i>								
<i>Found Stone, Witnesses gone</i>	<b>M</b>				<i>Hickory</i>	<i>18</i>	<i>S 83 E</i>	<i>29</i>
					<i>do</i>	<i>7</i>	<i>N 27 W</i>	<i>30</i>
	<b>W</b>				<i>Calm</i>	<i>14</i>	<i>N 70 W</i>	<i>19</i>
					<i>Beech</i>	<i>18</i>	<i>N 4 E</i>	<i>43</i>
<i>Witnesses gone, Old Oak stump</i>	<b>B</b>	<i>North corner,</i>			<i>B-Ash</i>	<i>18</i>	<i>N 80 W</i>	<i>10</i>
	<b>N</b>				<i>Hickory</i>	<i>15</i>	<i>S 70 E</i>	<i>23</i>
	<b>S</b>				<i>Ash</i>	<i>5</i>	<i>N 20 W</i>	<i>20</i>
	<b>Q</b>				<i>do</i>	<i>6</i>	<i>S 20 W</i>	<i>6</i>
	<b>U</b>				<i>R-Oak</i>	<i>40</i>	<i>N 30 E</i>	<i>24</i>
<i>Former Surveyor</i>					<i>Hickory</i>	<i>12</i>	<i>S 25 W</i>	<i>21</i>
<i>Mar 23. 1893.</i>					<i>S-Gum</i>	<i>10</i>		<i>14</i>
<i>Surveyed for Thos. Stansifer &amp; Beck the N E 1/4 of sec.</i>					<i>B-Oak</i>	<i>30</i>	<i>cr</i>	<i>28</i>
<i>A-E is 52 8 1/2 ft. 2/3 See note below. - Chas. F. Webster,</i>	<b>B</b>	<i>Boulder Mt + outcrop</i>	<i>A to B is 20.03 ch. in place</i>		<i>do</i>	<i>9</i>	<i>S N</i>	<i>21</i>
<i>C. is 1/2 ft. N of a straight line.</i>			<i>of 20.40 1/4 chs.</i>		<i>Sycamore</i>	<i>8</i>	<i>N 12 1/2 W</i>	<i>15 1/2</i>
<i>Chas. F. Webster Deputy.</i>								
<i>Am. M. Pruitt &amp; S. C.</i>								

*Feb 27th 1895. Surveyed the Anderson farm in the N W 1/4 of Sec. 36. And had to measure the entire North line of the Sec. and find it to be 81.63 chs = 1 5/4 ch longer than former survey with 100 ft Tape. I am satisfied that chain was returned if one chain = 100 ft 3/4 ch*

MOKS J 60 12/19/82  
 5382.37  
 14 1/2 = 12.1 1/4  
 J 0 EDM

## REMARKS.

August 30<sup>th</sup> 1880. Made a Survey of the line  $59\frac{1}{2}$  Rods North  
 of the South-East Corner of Section 19 and running West  
 to a Stone  $59\frac{1}{2}$  Rods North of T. 19. for the purpose of testing  
 and correcting a corner stone set by Miller. S. S. Co. to wit:  
 $57\frac{1}{2}$  chus S and  $3\frac{1}{4}$  chus East of T. and find said corner to be  
 $8\frac{1}{2}$  links South of true line. Set stone witnessed by Green 18<sup>th</sup> of 80  
 9 links. Chainmen and Flagmen Sworn.

Chas. F. Webster S. S. Co.

## REMARKS.

Record of survey made in Sections 23 and 22 in T12N, of R7E.

Oct. 14<sup>th</sup> 1891. - Sworn in as Deputy County Surveyor, by Jeremiah Fugan, County Surveyor, at his house in the country.

Oct. 15<sup>th</sup> and 16<sup>th</sup> 1891. - Made surveys, ran lines, and tested quite a number of old corners in Sections 23 and 22 in T12N, of R7E. The S $\frac{1}{2}$  of both these sections is well supplied with corners, there being stone corners every quarter of a mile on the South line of Section 23 and the E $\frac{1}{2}$  of the South line of Section 22 - There are 4 corners along the middle line running E and W of Sec. 23, and 5 corners along the middle line running E and W of Sec. 22. I find that each quarter of a mile on the middle line E and W of Sec. 23, and each quarter mile on the South line of said Sec. 23 overruns largely and in pretty near uniform proportion, with some variation, but not more so than is often found with old corners. I went each quarter of a mile on the middle line E and W of Sec. 22 and each quarter on the E $\frac{1}{2}$  of the South line of said Sec. 22, with but one exception and that at the West end of the said middle <sup>line</sup> of Sec. 22, falls short with some variations as usual in old surveys.

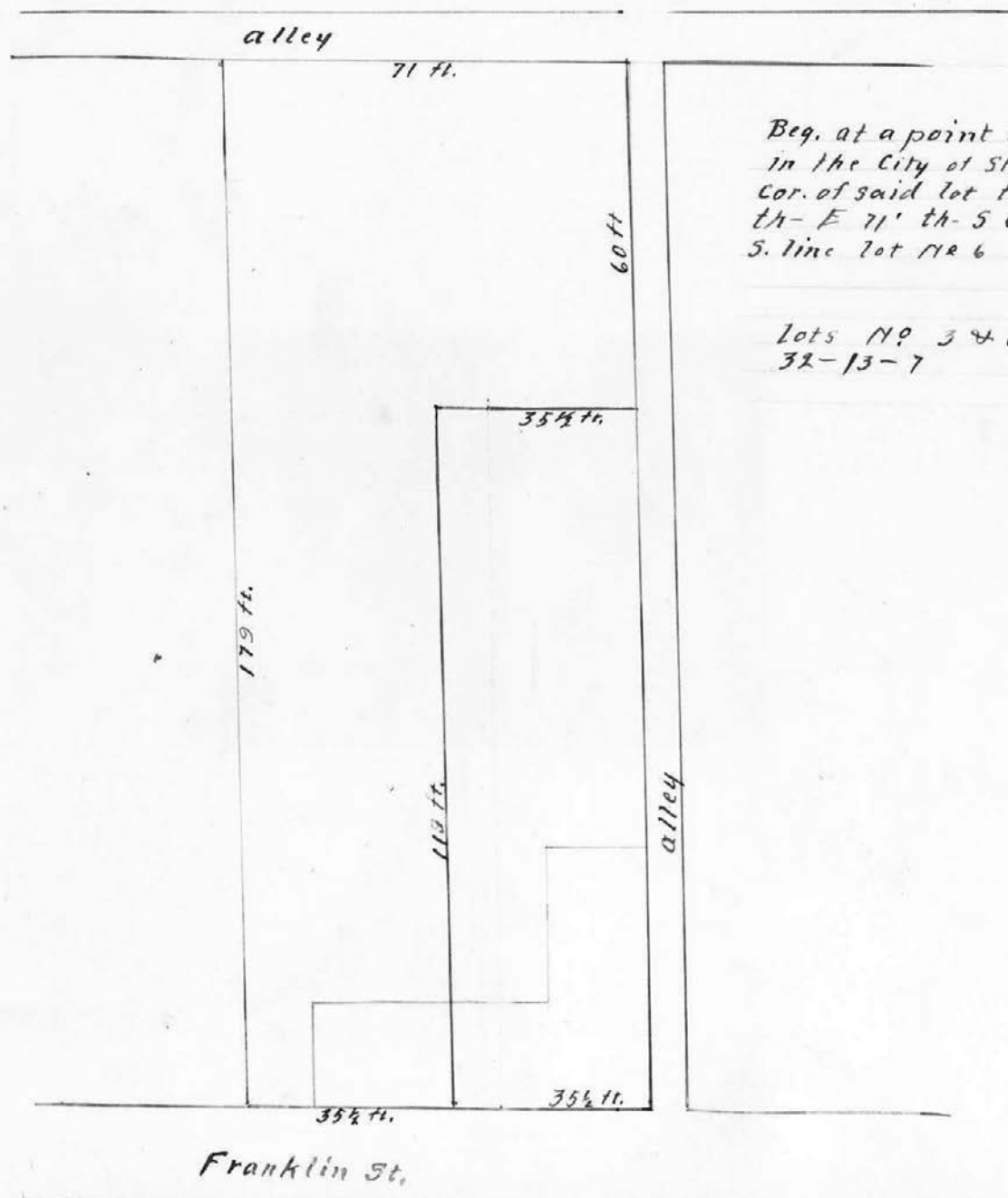
From a careful examination of all of said corners mentioned above and the measurement of the North line of both sections, I have come to the conclusion that said Sec. 23 overruns in measurement East and West throughout, and that said Sec. 22 falls short throughout in measurement East and West. And there being so many old corners established along the middle and South lines of both of said sections, I deemed it best and not proper to disturb the old landmarks and surveys, by establishing any new corners on the section line running North and South between said sections.

Chain Carriers, 1<sup>st</sup> Day - J. E. Morris and Michael Zobel - 2<sup>nd</sup> Day - G. E. Morris and Frank Zobel - The Chain Carriers were sworn according to law. Flag Carriers - 2<sup>nd</sup> Day - George Zobel and Charles Tankink. The flag carriers were sworn according to law. It was not necessary to use flags in measuring lines the 1<sup>st</sup> day, hence no flag carriers were sworn for that day.

Present. - George Zobel and Henry Torgemann. - N. T. O. - The above survey was made pursuant to a notice given Henry Torgemann by George Zobel, set in the 26<sup>th</sup> day of August 1891, but continued on account of the sickness of Jeremiah Fugan, the County Surveyor.

Wm. R. Morris, Deputy.

## PLAT.



Beg. at a point on S. line of lot no 6 on Franklin St.  
 in the City of Shelbyville, 71 ft, west of the S.E.  
 Cor. of said lot th. N 179' to the N sd. lot no 3  
 th. E 71' th. S 60' th. W = 35 1/2' th. S 119' to  
 S. line lot no 6 th. W 35 1/2' to Beg

Lots No 3 & 6 being in Sec 5-12-7 &  
 32-13-7

PLAT. OF Sec. 17-12-7-

M. Elliott

E

D

10.30 chas.

S.M. Thompson.  
20.20 acres.

10.10 chas.

Stone

Stone

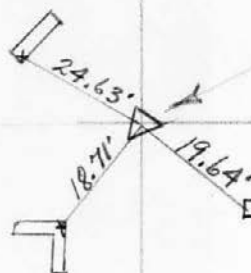
Wm. C. Thompson



## PLAT.

POINT "L" SECT 9-12-7  
(NE. COR. SE/4 OF SECT.)

POINT "P" SECTION 10-12-7  
(N.W. COR. SW/4 OF SECT.)



BOULDER IN CTR  
JUNCT. OF MCKAY RD  
AND CLARK RD.

LIMESTONE

## REMARKS.

Corners by John W. Whitlock - Search for stone was made at all corners

If stone wasn't found - either - Monument found before digging & was reset

or - Monument was set from best evidence