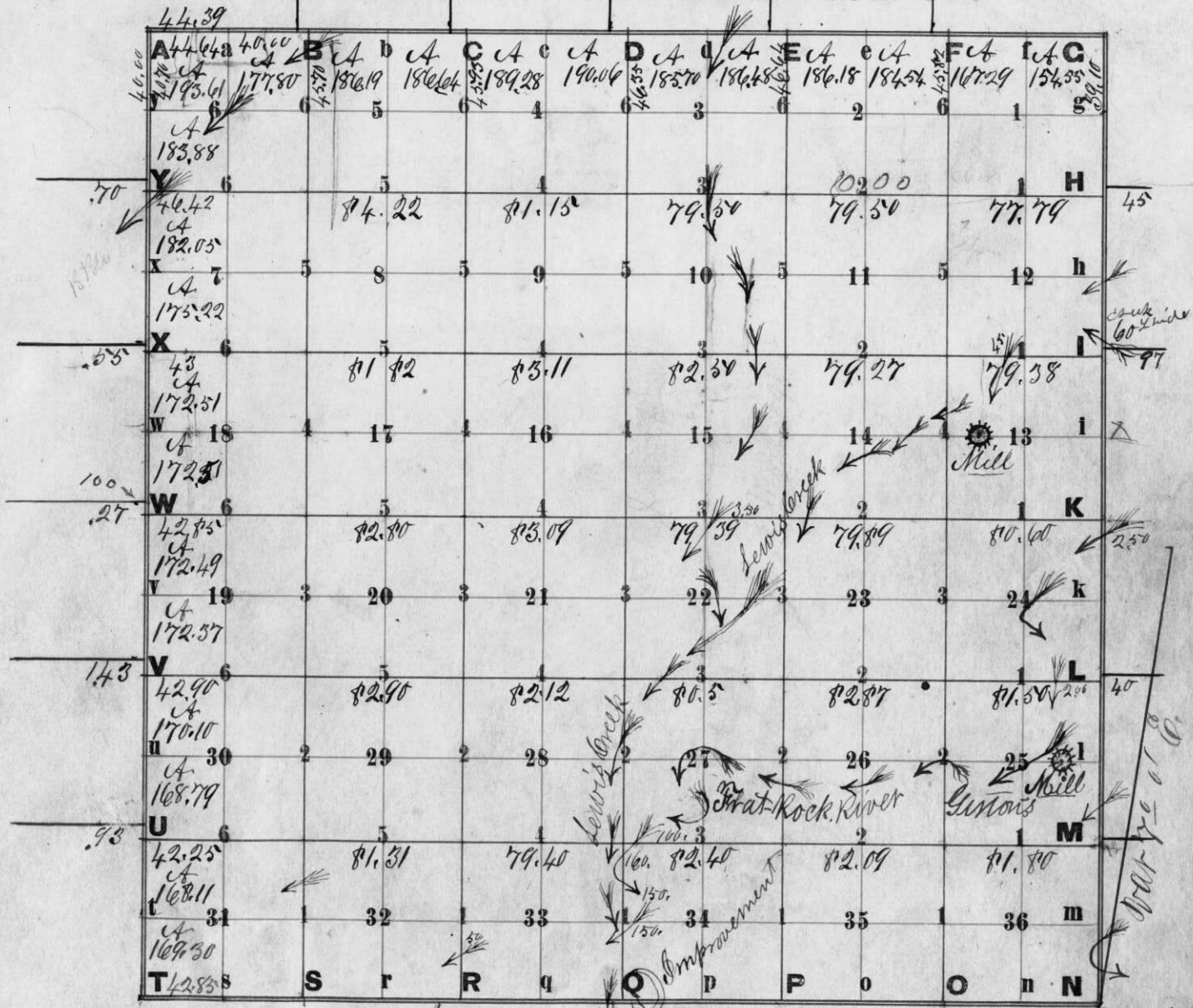


Haretta Hill

FIELD NOTES---EXPLANATION OF.



Township *5280* North, Range *2640* East. Of 2nd Prin Meridian

2640

Field Notes of Shelby County, Indiana.

Township *11* North, Range *✓* East. *Of 2nd Twp Mend*

Corners.	Bearing Trees.	Diam.	Courses.	Dist.	Corners.	Bearing Trees.	Diam.	Courses.	Dist.
A	Beech	9	N	30	G	Beech	12	S 17 E	17
	do	8	N 38 E	11		do	9	S 71 N	20
A'					G'	do	16	S 75 N	12
B	B. Ash	20	S 3 E	14	H	Oak	24	N 75 E	13
	Bur. Oak	26	N 60 N	28		Beech	10	N 60 N	21
B'						Oak	36	N 25 E	8
C	Wal. Kong	20	N 1 E	13	H'	Beech	12	S 26 E	25
	Beech	12	S 29 N	36		do	9	N 62 N	20
C'					I	Walnut	48	N 76 N	7
D	Beech	14	N 31 N	20		Elm	20	S 73 E	42
	N. Oak	15	S 62 E	20	I'	Beech	18	S 14 N	12
D'						do	10	N 41 N	22
E	Beech	10	S 36 E	19	K	do	15	N 30 E	24
	do	6	N 42 N	18		do	10	S 4 E	42
E'					K'	do	10	S 62 E	24
F	Sugar	8	N 70 N	2	L	Sycamore	39	N 20 E	6
	Oak	13	S 35 E	20		Beech	12	S 34 E	3
F'						do	8	N 17 N	37
					L'	do	12	S 33 N	28
					M	Elm	10	N 10 E	15
						Beech	14	S 75 N	35
						do	14	N 3 E	18

Field Notes of Shelby County, Indiana.

Township **11** North, Range **6** East. of *2nd Principal Meridian*

Corners.	Bearing Trees.	Diam.	Courses.	Dist.	Corners.	Bearing Trees.	Diam.	Courses.	Dist.
M'	Beech	20	S 87 E	32	S	Beech	14	S 30 E	21
	so	6	N 37 W	11		so	8	N 35 W	23
N	so	10	N 15 E	14	S'	Sugar	13	N 87 W	16
	so	8	S 51 W	34		Beech	7	S	14
N'	Ash	20	N 10 E	23	T	Ash	8	N 80 W	14
	Beech	16	S 36 E	14		so	12	S 70 E	5
O	so	12	S 36 E	9	T'				
	so	10	N 36 W	24	U	Beech	9	N 35 W	40
O'	so	14	N 71 W	20		Walkey	14	S 44 E	28
	Oak	7	S 30 E	8	U'				
P	Beech	20	N 77 E	10	V	Poplar	60	S 61 E	20
	Ash	24	S 54 W	20		Beech	14	N 11 W	35
P'	Walkey	18	N 29 W	12	V'				
	Buckeye	10	S 30 E	17	W	Beech	4	S 75 E	6
Q	Maple	10	N 20 E	31		so	5	N 77 W	22
	Willow	7	S 20 E	15	W'				
Q'	Cherry	6	N 80 E	13	X	Sugar	10	N 65 E	35
	Walkey	7	S 55 W	29		so	8	S 52 W	12
R	Sugar	16	N 83 W	24	Y	Walkey	9	S 67 E	21
	so	7	S 33 E	17		Walnut	18	N 44 W	6
R'	Beech	12	S 37 E	24					
	so	13	N 30 W	29					

Field Notes of Shelby County, Indiana.

3

Township **11** North, Range **6**

East. of Ind. Riv. Mend

Corners.	Bearing Trees.	Diam.	Courses.	Dist.	Corners.	Bearing Trees.	Diam.	Courses.	Dist.
25, 26, 33, 34.	Beech	10	N 82 E	10	21, 22, 27, 28.	Beech	9	S 33 E	13
	do	12	S 33 N	28		Elm	6	S 88 N	25
23, 24, 25, 26.	Ash	4	N 82 E	7	15, 16, 21, 22	Beech	6	N 9 E	11
	N Beech	8	N 23 N	7		do	20	S 20 N	13
13, 14, 23, 24.	Elm	4	S 86 E	29	9, 10, 15, 16	Sugar	9	S 53 E	9
	Beech	18	N 62 N	16		Elm	4	S 37 N	18
11, 12, 13, 14.	do	18	N 43 E	14	3, 4, 9, 10	Beech	3	N 67 N	8
	N Oak	6	N 30 N	18		do	18	S 82 E	19
1, 2, 11, 12.	Beech	8	N 64 E	16	28, 29, 32, 33	do	14	S 7 E	14
	do	9	S 87 N	24		do	20	N 12 1/2 N	46
26, 27, 34, 35.	Buckeye	9	S 34 E	18	20, 21, 28, 29.	Sugar	16	S 34 1/2 N	13
	Sugar	36	N 36 N	20		do	18	N 77 E	31 1/2
22, 23, 26, 27.	Beech	34	S 17 E	27	16, 17, 20, 21	Hickory	10	N 31 E	4
	do	12	N 31 N	33		do	15	S	22
14, 15, 22, 23.	do	10	S 22 E	24	8, 9, 16, 17.	Beech	30	S 12 N	24
	do	4	N 45 N	17		do	3	N 24 N	15
10, 11, 14, 15	do	10	N 69 E	19	4, 3, 8, 9	do	10	S 24 N	7
	do	6	S 63 N	20		do	7	N 21 E	27
2, 3, 10, 11.	do	18	N 16 N	13	29, 30, 31, 32	do	6	N 69 E	20
	do	10	S 43 N	16		do	20	S 5 N	3
27, 28, 33, 34	Hackberry	24	N 30 N	3	19, 20, 29, 30.	Hickory	14	N 65 E	28
	Buckeye	9	S 44 E	7		Beech	14	S 2 N	30

Field Notes of Shelby County, Indiana.

Township 11

North, Range 6

East. of Land P'm Mendon

Corners.	Bearing Trees.	Diam.	Courses.	Dist.	Corners.	Bearing Trees.	Diam.	Courses.	Dist.
17.18.19.20	Beech	7	N 11 E	21	2	Beech	12	S 55 N	37
	Ash	8	S 38 N	15	"	do	6	N 5 E	34
7.8.17.18	Sugar	15	N 31 N	25	3	Ash	30	N 78 E	12
	Beech	7	S 42 E	18	"	Beech	15	S 35 N	4
5.6.7.8	Sugar	4	S 43 N	12	4	do	15	S 72 1/2 N	14
	Beech	4	N 21 N	24	"	Sugar	16	S 66 E	11 1/2
M to U					5	Beech	30	S 71 E	20
1	Ash	14	S 36 E	8	"	Sugar	7	N 33 N	35
"	do	14	N 26 N	26	6	Ash	30	N 22 N	30
2	Beech	20	N 23 1/2 N	11	"	Sugar	14	S 56 E	12
"	do	30	N 84 E	20	R to W				
3	do	6	S 53 E	2	1	Beech	18	N 38 E	20
"	Alum	10	N 43 E	37	"	do	10	S 58 N	10
4	Beech	30	N 40 E	30	2	hackberry	18	N 22 E	18
"	Sugar	16	S 2 E	27	"	hackberry	16	S 30 N	28
5	do	18	N 63 N	13	3	Beech	8	S 19 N	23
"	do	16	S 47 E	15	"	Sugar	7	N 36 E	29
6	do	18	S 68 E	15	4	Beech	20	S 31 E	25
	Beech	10	N 79 N	8	"	do	14	N 83 N	20
L to V					5	Ash	18	N 48 E	14
1	Beech	18	S 47 E	31	"	Beech	5	S 87 N	7
"	do	20	N 67 N	26	6	do	14	N 15 N	25
					"	Sugar	10	S 38 E	6

Field Notes of Shelby County, Indiana.

Township **11** North, Range **6** East. of *2nd Prin Merid*

Corners.	Bearing Trees.	Diam.	Courses.	Dist.		Corners.	Bearing Trees.	Diam.	Courses.	Dist.
II <i>W</i>	X									
1	Maple	10	N 10 E	44		3	Linn	8	N 35 W	31
"	Walnut	30	S 3 N	61		"	Jugwood	5	S 33 E	36
2	Beech	20	S 30 W	15		4	Beech	4	N 41 E	13
"	Sycamore	36	N 65 E	30		5	So	3	S 6 W	12
3	Elm	8	S 8 W	4	O <i>W</i>	E				
"	So	30	N 82 E	21	1	Hickory	16	S 69 W	22	
4	Beech	10	N 26 W	30	"	Ash	14	S 85 E	8	
"	Sugar	18	S 29 W	17	2	Buckeye	10	S 40 E	10	
5	Beech	5	S 49 E	31	"	Elm	30	N 77 W	38	
"	Sugar	18	N 3 W	25	3	Beech	16	S 52 E	37	
6	Beech	8	S 41 W	20	"	So	17	N 64 W	17	
"	Sugar	3	N 40 W	10	4	So	30	N 88 W	31	
H <i>W</i>	Y				"	W Oak	25	S 62 E	26	
1	Beech	9	N 28 W	12	5	Oak	20	S 71 E	42	
"	So	18	S 4 E	20	"	Beech	10	N 71 W	12	
2	So	10	N 35 W	14	6	So	30	N 58 E	22	
"	W Beech	3	S 36 W	6	7	So	15	S 64 W	39	
3	Beech	20	N 28 W	15	P <i>W</i>	E				
"	Ash	4	S 43 E	13	1	Beech	20	S 4 E	10	
4	Beech	30	N 55 E	42	"	So	12	N 5 E	27 1/2	
"	So	10	S 23 W	30	2	Buckeye	4	N 75 E	21	
					"	Beech	20	S 75 E	18	

Township

11

North, Range

6

East.

Of 2nd Prin Merid

Corners.	Bearing Trees.	Diam.	Courses.	Dist.	Corners.	Bearing Trees.	Diam.	Courses.	Dist.
3	N. Beech	4	S 13° E	10	R to C				
"	Elm	18	S 82° N	40	1	N. Beech	5	N 66° E	4
4	Sugar	9	S 27° E	21	"	Elm	20	S	10
"	do	14	N 28° N	22	2	Beech	15	S 62° N	14
5	B. Ash	4	S 43° E	5	"	do	16	S 88° E	11
"	Elm	10	N 44° N	6	3	Ash	5	S 71° E	11
6	Linn	4	S 46° N	10	"	Beech	6	S 83° N	28
"	Hickory	8	N 41° E	20	4	do	30	S 37° E	26
Q to D					"	do	4	N 73° N	10
1	Dycamore	13	S 59° E	24	5	do	5	S 20° N	19
"	do	30	N 41° N	24	"	Ash	10	N 9° E	21
2	Hackberry	14	S 21° N	30	6	Beech	12	S 6° N	33
"	Buckeye	18	N 21° E	28	"	Oak	14	N 5° N	13
3	Beech	10	S 4° E	6	S to B				
"	Ash	14	N 87° N	28	1	Beech	6	S 64° E	21
4	Oak	10	S 35° E	9	"	do	30	S 59° N	21
"	Beech	9	S 87° N	29	2	do	9	N 60° E	17
5	do	15	S 74° E	8	"	do	16	S 20° N	13
"	do	12	N 74° N	8	3	do	10	N 65° N	13
6	Sogwood	4	N 68° E	10	"	do	18	S 72° E	25
"	Beech	10	N 25° N	12	4	Sugar	20	S 80° E	16
					"	N Oak	22	S 88° N	62

Field Notes of Shelby County, Indiana.

Township *11* North, Range *6* East. *of 2nd Pm Meridian*

Corners.	Bearing Trees.	Diam.	Courses.	Dist.	Corners.	Bearing Trees.	Diam.	Courses.	Dist.
<i>5</i>	<i>Sugar</i>	<i>12</i>	<i>N 56 W</i>	<i>4</i>					
<i>"</i>	<i>Beech</i>	<i>5</i>	<i>S 24 E</i>	<i>29</i>					
<i>6</i>	<i>do</i>	<i>30</i>	<i>N 27 E</i>	<i>36</i>					
<i>"</i>	<i>do</i>	<i>30</i>	<i>S 23 N</i>	<i>12</i>					

Record of Surveys in Shelby County, Indiana.

Section / Township // North, Range *C* East. *2nd P. M.*

Date, Intermediate Corners, &c., &c.	Corners.	Stone, Mark, &c.	Acres.	Hnd.	Bearings, Trees, &c.	Diam.	Courses.	Dist.
<i>June 3rd 1850</i>	B	Stone			Beech	18	N 10° E	16
	O	"			Elm	12	N 33° N	25
	X	"			Oak	40	N 75° E	28
	Z	Boulder			H-Oak	10	N 84° N	28
	Z	"			No Hit			
<i>June 19th 1850</i>	V	Stone			Hickory	8	N 1° E	44
	W	"			So	16	N 71° E	33
	N	"			Beech	12	N 34° E	25
	M	"			So	14	N 31° N	34
	P. S.	"			H-Oak	45	N 12° N	23
	H	"			Hickory	8	N 4° N	42
	Y. R.	"			So	16	E	43
<i>N. End. of Line Divid^d 1/2 of S. E. qrs. Fargin, Surveyor, Jan'y 26th 1860 B. R. S of "</i>	M	"			Ash	8	N 65° N	30
	P. S.	"			Beech	20	N 28° N	1
	H	"			So	16	N 16° N	40
<i>7 chains 62 1/2 links South of 7 chains 62 1/2 links North of 7 chains 75 links West of Sept 11, 1885. Will A. Selig - surveyor</i>	Y. R.	"			No Hit			
	B	"			No Hit			
	B	Stone			Ed. Michal, Surveyor			
	B	Stone			Stone	10	N 15° 50' E	11
	B	"			"	15	N 5° 45' W	17

Record of Surveys in Shelby County, Indiana.

Section

Township

North, Range

East.

Date, Intermediate Corners, &c., &c.

Corners.

Stone, Mark, &c.

Acres.

Hund.

Bearings, Trees, &c.

Diam.

Courses.

Dist.

November 23rd 1887.

F. Finley S. S. C.

U.

Long line, stone, no wit.

April 5-1904 located stone

S. P. Harris S. S. C.

C

Stone

North

19

May 3-1904

Located corner $\frac{1}{2}$ way X to O
and set black locust post
Marked R on south side

S. P. Harris

S. S. C.

X to O

no wit

Record of Surveys in Shelby County, Indiana.

Section 2 Township 11 North, Range 6 East.

Date, Intermediate Corners, &c., &c.	Corners.	Stone, Mark, &c.	Acres.	Hund.	Bearings, Trees, &c.	Diam.	Courses.	Dist.
	X	Stone			No Nit			
	P	"			"			
	N	"			"			
	G	"			Ash	4	N	13
	M	"			Gum	20	S 37 E	3
					Hickory	14	N 76 E	19
	I	"			No Nit			
	K	"			"			
	F	"			"			
	O	"			"			
	D	"			"			
	M	"			"			
	W	"			"			
	Y	"			"			
	O	"			"			
	S	"			"			
	H	"			"			
	U	"			"			
<p>Jargin, Surveyor</p> <p>15, R. 2 of same</p> <p>45, 68 R. N. of same</p> <p>18, 24 R. S 34° N of above</p> <p>Including, off at end S 1/2 of N 1/2 S. N. gr.</p> <p>17, 32 chns East of</p> <p>23, 12 1/2 chains South of said corner.</p> <p>le G. Webster, Surveyor, 1875;</p>	<p style="text-align: center;">D</p>	<p style="text-align: center;">+ 2 1/2 Stone</p> <p style="text-align: center;">Stake</p>	<p style="text-align: center;">7.28</p>	<p style="text-align: center;">Ed Minchel, Surveyor</p>	<p style="text-align: center;">Stone</p> <p style="text-align: center;">White Oak</p> <p style="text-align: center;">Beech</p>	<p style="text-align: center;">S 44 1/2 N</p> <p style="text-align: center;">N 27 N</p> <p style="text-align: center;">N 11 N</p>	<p style="text-align: center;">39</p> <p style="text-align: center;">23</p> <p style="text-align: center;">24</p>	

Record of Surveys in Shelby County, Indiana.

Section *B*

Township *11*

North, Range *6*

East.

Date, Intermediate Corners, &c., &c.	Corners.	Stone, Mark, &c.	Acres.	Hand.	Bearings, Trees, &c.	Diam.	Courses.	Dist.
	M	Stone			Beech	10	S 23° N	10
					do	12	N 6° N	42
	N	"			Sugar	24	S 70° E	9
					H-Wood	5	N 68° N	17
	O	"			H-Ash	9	N 65° N	12 1/2
					do	10	S 60° E	20
	S.	"			H-Oak	30	S 65° E	26
					Sugar	16	N	24
	D	"			Beech	24	E	4 1/2
<i>Rock-Surveyor.</i>					do	14	N 60° E	23 1/2
	G	"			do	3	N 20° E	14
					do	11	S	18
	C	"			B-Oak	14	N	40
<i>"</i> <i>Mar 30th 1869</i>	S.	Boulder			No Nit			
	T	"			"			
<i>Miller, Surveyor</i>	W.	"			Rocks Nit			
<i>Perpetuated</i>	P	Stone			Young Sand Stone		West	18 2/3
<i>April 16th 1882</i>					Boulder		East	29.
<i>C. S. Webster S.S.</i>	O	Young Boulder			Boulder		North	73
<i>Perpetuated</i>								
<i>John W. Whitlock</i>	P	Stone			See Tie File		See Remarks	pg 232
<i>"</i>	Z	P.K. Nail			"		"	"

Record of Surveys in Shelby County, Indiana.

Section 4 Township 11 North, Range 6 East.

Date, Intermediate Corners, &c., &c.	Corners.	Stone, Mark, &c.	Acres.	Hund.	Bearings, Trees, &c.	Diam.	Courses.	Dist.
<i>Chickals, Sumner</i>	M	Stone			Beech	8	N 73 E	40
					do	22	S 60 W	34
	N	"			do	16	cr	16
					do		S 30 W	20
	O	"			do	5	N 30 E	9 1/2
					elm	9	S 24 W	6 1/2
	W	"			N-Walnut	4	N 51 W	33
					Beech	18	N 75 E	31
	X				S-Wood	2	S 40 E	7
					S-Ash	2 1/2	N 4 W	7
<i>Rack, Sumner, April 16th 1882, C. J. Webster S.S.</i>	Y				Sugar	3	N 62 W	6
					do	6	S 46 W	18
	C.				Beech	12	S 36 1/2 E	32
					do	10	S 2 E	25
<i>Perpetuated</i>	B	Limestone			Limestone		S 58 E	48
	Z	Boulder			Boulder		S 61 1/2 W	47
					do		S 46 E	35
	X				Boulder		N 5 1/2 E	33 3/4
					do		S 1 E	24
<i>April 17th 1882, C. J. Webster S.S.</i>	Y	Boulder			Walnut	15	S 84 1/2 E	175 3/4
	W	Blue do			Large Boulder	8	N	14 1/2

Record of Surveys in Shelby County, Indiana.

Section 4 Township 11 North, Range 6 East.

Date, Intermediate Corners, &c., &c.	Corners.	Stone, Mark, &c.	Acres.	Hund.	Bearings, Trees, &c.	Diam.	Courses.	Dist.
A hard flinty Boulder chain } Eddie Norris carriers } John R. Sylvester April 1 st 1884. - Surveyed by Wm R. Norris, Deputy County Surveyor.	II	Boulder			Witness Stone		North	25
					Witness Stone		South	20
		Flagman - Jeff. Eberhart - Axman - James A. Dickinson.						
John W. Whitlock	X	Stone			See Tie File		See Remarks, pg. 232	
"	L	Stone			"		"	
"	A	P.K. Nail			"		"	

Record of Surveys in Shelby County, Indiana.

Section *3^d* Township *11* North, Range *6* East.

Date, Intermediate Corners, &c., &c.	Corners.	Stone, Mark, &c.	Acres.	Land.	Bearings, Trees, &c.	Diam.	Courses.	Dist.
	<i>L</i>	<i>Stone</i>			<i>Beech</i>	<i>10</i>	<i>S 88 E</i>	<i>36 1/2</i>
					<i>Oak</i>	<i>22</i>	<i>S 87 1/2 N</i>	<i>40</i>
	<i>O</i>	<i>"</i>			<i>Beech</i>	<i>12</i>	<i>S 18 E</i>	<i>18 3/4</i>
					<i>So</i>	<i>16</i>	<i>N 47 1/2 E</i>	<i>21 1/4</i>
	<i>S</i>	<i>"</i>			<i>Oak</i>	<i>25</i>	<i>N 40 E</i>	<i>34</i>
	<i>R</i>	<i>"</i>			<i>Beech</i>	<i>14</i>	<i>N 63 N</i>	<i>31 1/4</i>
	<i>N</i>	<i>"</i>			<i>So</i>	<i>14</i>	<i>S 38 1/2 E</i>	<i>23 1/2</i>
					<i>H-Oak</i>	<i>12</i>	<i>N 8 N</i>	<i>27 1/2</i>
	<i>M</i>	<i>"</i>			<i>Beech</i>	<i>10</i>	<i>N 30 N</i>	<i>25</i>
<i>off S. End.</i>	<i>W-T</i>	<i>"</i>	<i>29</i>		<i>H-Oak</i>	<i>20</i>	<i>N 12 1/2 E</i>	<i>27 1/2</i>
					<i>So</i>	<i>30</i>	<i>N 30 1/2 E</i>	<i>73 3/4</i>
					<i>So</i>	<i>30</i>	<i>N 38 1/2 E</i>	<i>30</i>
<i>Rock, Surveyor -</i>	<i>X-S</i>	<i>"</i>	<i>"</i>		<i>No Nit -</i>		<i>Sarguin. le. S.</i>	
<i>Sept 14th 1854</i>	<i>B</i>	<i>"</i>						
<i>Mar 26th 1861 -</i>		<i>"</i>						
<i>Divis Line</i>		<i>"</i>						
<i>67 R 32 East</i>	<i>D</i>	<i>"</i>			<i>Sugar</i>	<i>17</i>	<i>S 62 E</i>	<i>56</i>
<i>15 R 52 N</i>	<i>N</i>	<i>"</i>			<i>Beech</i>	<i>11</i>	<i>S 72 N</i>	<i>62</i>
<i>24 R 92 E of S W Corner</i>		<i>"</i>			<i>So</i>	<i>36</i>	<i>S 32 1/2 E</i>	<i>38</i>
<i>(of the old Bonner Survey by</i>					<i>Sugar</i>	<i>16</i>	<i>N 45 E</i>	<i>17</i>
<i>Chickals - I dont like this</i>					<i>So</i>	<i>24</i>	<i>N</i>	<i>26</i>
<i>kind of Recording - I put it</i>								
<i>in for fear it may be needed,</i>								
<i>See Remarks, Page 226</i>								
<i>54 links 10th</i>	<i>R</i>	<i>"</i>			<i>Beech</i>	<i>18</i>	<i>N 6 1/2 N</i>	<i>49</i>
<i>March 14th 1878</i>		<i>"</i>			<i>Stone</i>		<i>S</i>	<i>52</i>

Corniss, Surveyor

Record of Surveys in Shelby County, Indiana.

Section 5 Township 11 North, Range 6 East.

Date, Intermediate Corners, &c. &c.	Corners.	Stone, Mark, &c.	Acres.	Hund.	Bearings, Trees, &c.	Diam.	Courses.	Dist.
<i>April 17th 1882</i> <i>C. B. Webster S.S.C.</i>	<i>W</i>	<i>Boulder</i>			<i>Boulder</i>		<i>South</i>	<i>25</i>
	<i>IP</i>	<i>Boulder</i>			<i>No Witnesses</i>			
	<i>Y</i>	<i>Boulder</i>			<i>Linn</i>	<i>24</i>	<i>N30W</i>	<i>27</i>
					<i>Linn</i>	<i>20</i>	<i>S40W</i>	<i>70</i>
<i>67 links north of -----</i>	<i>Q</i>	<i>Boulder</i>			<i>No Witnesses</i>			
<i>67 links south of -----</i>	<i>IR</i>	<i>Boulder</i>			<i>No Witnesses</i>			
Chain { <i>Eli Beard</i> Carriers { <i>George Harris</i> Flagman. - <i>James Ricketts</i> Axman. - <i>John J. Lamar</i>	<p><i>Survey made Oct. 29th + 30th, 1883.</i></p> <p><i>By W^m R. Morris, Deputy County Surveyor,</i> <i>George Murphy S.S.C.</i></p>							

Record of Surveys in Shelby County, Indiana.

Section 6 Township 11 North, Range 6 East.

Date, Intermediate Corners, &c., &c.	Corners.	Stone, Mark, &c.	Acres.	Hund.	Bearings, Trees, &c.	Diam.	Courses.	Dist.
July 5 th 40 R 10 G. E. of 1862	Y B	Stone ^{1/4} Boulders			No Nit			
	M	Stone			" Aorniss, Surveyor			
	B.	"			Buckeye 71	48 1/2	E	28 3/4
See B. above, Rock Surveyor.	D	"			Sugar 22	46 1/2	N	30
					H-elm 20	4 1/2	E	4 7/2
					H-Beech 6		E	7 1/2
					H-Oak 30	30	N	4
					Gum 12	49	E	29
4 1/2 R &	of same	"			Buckeye 15	64	E	21
					R-Bud 8	4 1/4	N	8
Apr 10 th 1855	I	"			Walnut		Stump	1 1/2
	A	"			No Nit			
Fargin, Surveyor	K	"			"			
Dec 23 rd 1861	M	"			Beech 17	7 1/2	E	36
					Sugar 20	7 7/2	E	37
					do 30	38	N	6 3/2
	O	Boulder			Ash 12	87	E	45
44. R. S.	of same				do 16	13 1/2	N	14
		Stone			Sycamore 19	26	N	22
					H-elm 33	36 1/2	N	56
40. R. 10. G. E.	of above				Ash 25	40	N	19 1/2
36 1/2 R S	of M	"			Beech 24	50 1/2	N	30
					Ash 40	46	N	90.

Section *C*Township *11*North, Range *C*

East.

Date, Intermediate Corners, &c., &c.	Corners.	Stone, Mark, &c.	Acres.	Hund.	Bearings, Trees, &c.	Diam.	Courses.	Dist.
73 R.S. of 125 R N of above 36 1/2 R on East B of B. River Kortiss, Surveyor	M	Stone " "			Ash Beech Sycamore SO	40 22 24 22	S 40 N N 29 E N 50 1/2 E S 2 E	20 22 1/2 21 38 1/2
★ May 20 th 1901 35 rods. 15 link East of W → FOUND Stone 1" Down, Razed Spikes 6 1/2" N+S of top in File, PK Nail on Surface PK Nail set 2' W+S of Stone in P.M.T AS REF. May D.C.S. May 1985		Stone witness			Stone "		S. 1° E N. 11° E	15 feet 15 "
Found 6 foot of a lap on the south line dividing J. J. Scott and Mrs. Ella F. Fredrick the lap all comes of Mr. J. J. Scott,								
36 rods. 15 links East of T	T	Stone			witness, Stone			8 13 1/2 feet
		Millard F. Crawford S. S. C.						

Record of Surveys in Shelby County, Indiana.

Section **7** Township **11** North, Range **6** East.

Date, Intermediate Corners, &c., &c.	Corners.	Stone, Mark, &c.	Acres.	Hund.	Bearings, Trees, &c.	Diam.	Courses.	Dist.	
<p>See 24th 1861</p> <p>29th 22nd L. A Former Surveyor See Remarks 22nd See 23rd 1861</p>	P	G-Stone			H-Cherry	19	ct 27 E	123	
					so	20	ct 6 N	86	
	O	Boulder			Walnut	14	ct 49 1/2 E	74	
					Ash	19	ct 76 E	83 1/2	
	L	G-Stone			Stone	Nit	ct 32 N	63	
					so	"	ct 23 E	64	
					ct Nit				
	Z	Boulder	Lapse of time					against acquiescence	
	A	Flinty "				H-Oak	40	ct 89 E	98 1/2
						H-Calm	24	ct 38 E	236
					Beech	36	ct 28 N	63	
					so	11	ct 3 E	89	
					so	22	ct 56 E	82 1/2	
					so	20	ct 73 E	142	
					B-Oak	30	ct 36 N	81 1/2	
					so	36	ct 81 1/2 N	130 3/4	
					Sycamore	60	ct 72 E	102	
					H-Cherry	24	ct 37 N	120	
					Beech	14	ct 11 1/2 N	42 1/2	
					H-Oak	20	ct 3 1/4 N	9 1/2	
					B-Walnut	30	ct 82 1/2 E	77	
					H-Oak	40	ct 79 1/2 N	6	
<p>19th 23rd 1861</p>					Sugar	11	ct	10	
					so	18	ct 35 E	31	

Record of Surveys in Shelby County, Indiana.

Section 7 Township 11 North, Range 6 East.

Date, Intermediate Corners, &c., &c.	Corners.	Stone, Mark, &c.	Acres.	Hund.	Bearings, Trees, &c.	Diam.	Courses.	Dist.
30 R 8	of B	Stone			Roak	36	S 40° E	19 1/2
					do	42	N 44° E	15 9
5 1/4 R. S.	of same	"			Halmit	48	N 15° E	8
					Beech	24	S 37 1/2° N	36
30 R. S.	of C	"			Poplar	24	S 36 1/2° E	49 1/2
					Beech	13	N 67 1/2° E	19
3 1/4 R. S.	of same	"			Oak	30	S 15 1/2° N	10
					Elm	20	N 45° N	19 1/2
5 1/4 R. S.	of A ³⁹¹	"			No Wit			
99 R. 16 L. S.	of same	"						
					Corriss, Sumner			
	M	S. Stone 1141			do	6	S 48 1/2° E	22
30 R 17 1/2 L. S.	of M	Boulder			Beech	24	S 49° E	46
30 R 17 1/2 L. S.	of P	Stone			Stone		W	33
12 9/8 Chains South	of A	Stone nkd 7			Elm	2	S 86° W	3.32
13 2/3 Chains South	of C	Stone			Beech	18	S 84 1/2° E	28 1/2
March 13 th 1877	J Egan's sb				Elm	20	S 42 1/2° E	40
12 9/8 Chains N	of Y	Stone nkd 6			Beech	10	N 45° W	32
851.73'					do	6	S 45° W	34
12 9/8 Chains N	of Z	Stone			No wit area			
April 4 th to 5 th 1877	Jerry Egan's sb							

Record of Surveys in Shelby County, Indiana.

47

Section 7

Township //

North, Range 6

East.

Date, Intermediate Corners, &c., &c.	Corners.	Stone, Mark, &c.	Acres.	Hhd.	Bearings, Trees, &c.	Diam.	Courses.	Dist.
--------------------------------------	----------	------------------	--------	------	----------------------	-------	----------	-------

10 Rods. 7 links west of	O	stone			no witness			
--------------------------	---	-------	--	--	------------	--	--	--

10 " 7 " " "	stone at O	"			"			
--------------	------------	---	--	--	---	--	--	--

10 " 7 " " "	D	"			"			
--------------	---	---	--	--	---	--	--	--

10 " 7 " " "	stone at D	"			"			
--------------	------------	---	--	--	---	--	--	--

May 7th 1901
 Crawford
 County Surveyor, S. Co.

John W. Whitlock	16 April, 1875	V	I. Pin		See Tie File		See Remarks, pg 232	
------------------	----------------	---	--------	--	--------------	--	---------------------	--

14.98 S. of "A" Found May 1985, 8" Down w/ RR Spike on Surface, L. May Dep. Co. Surveyor

495

Record of Surveys in Shelby County, Indiana.

Section *8* Township *//* North, Range *6* East.

Date, Intermediate Corners, &c., &c.	Corners.	Stone, Mark, &c.	Acres.	Hand.	Bearings, Trees, &c.	Diam.	Courses.	Dist.
	B	Stone			Beech	22	S 18 E	34
					do	15	N 31 W	12
	P	"			Sugar	18	S 22 E	16
					do	10	N 50 W	25
	E	"			Beech	10	N 52 W	37
					do	16	N 67 E	39
	H	"			do	10	W	20
					do	10	S 41 W	11
	M	"			do	17	N 80 E	26
					do	24	S 83 W	11
	N	"			do	5	S 36 E	14
					do - Hard	6	N 54 W	12
	O	"			Sugar	6	S 82 W	17
<i>Wickals, Surveyor</i>					Wickroy	20	E	3
	W	"			Sugar	15	S 83 W	28
					do	5	S 36 E	44
<i>Same</i>	Y	"			Beech	6	S 17 E	23
					do	8	S 36 W	30
	N	" ct			Stone	nit	S 25 W	30
					do	"	N 67 W	25
	X	" X			do	"	S 33 W	30
					do	"	N 51 1/2 E	37
	P	do " 27.			Stone P.		S 23 E	64
					do		S 39 W	62

Section 8

Township 11

North, Range 6

East.

Date, Intermediate Corners, &c., &c.	Corners.	Stone, Mark, &c.	Acres.	Hund.	Bearings, Trees, &c.	Diam.	Courses.	Dist.
<i>Crossing Surveyor</i> <i>April 30th 1889. (var 1st)</i>	<i>Z</i>	<i>B. Boulder</i>			<i>Boulder</i>		<i>S 64 E 32</i>	
<i>1/2 of</i>	<i>O to P</i>	<i>Boulder 6x8x24, Boulder + on top</i>			<i>do</i>		<i>N 36 W 39 1/2</i>	
<i>(P to O = 20.55 ch. - O to A = 20.54 ch)</i>	<i>O</i>	<i>Stone</i>			<i>do</i>		<i>S 76 1/2 W 14</i>	
<i>Perpetuated,</i>	<i>P.</i>	<i>Boulder in Road</i>			<i>do</i>		<i>N 1/2 25 1/4</i>	
<i>10.05 1/2 chns North of</i>					<i>do</i>		<i>N 83 1/2 E 15 1/2</i>	
<i>P to E = 40.34 chns,</i>					<i>do</i>		<i>S 54 1/2 E 26</i>	
<i>D to M = 40.60 ch,</i>					<i>Stone</i>		<i>South 23 1/2</i>	
<i>May 2 1911</i>	<i>S</i>	<i>boulder</i>			<i>no witness</i>			
<i>" " "</i>	<i>T</i>	<i>boulder</i>			<i>no witness</i>			
<i>John W. Whitlock 16 April, 1975</i>	<i>Z</i>	<i>J. Pin</i>			<i>Section File</i>		<i>{ See Remarks</i>	
<i>" " "</i>	<i>L</i>	<i>A.K. Nail</i>			<i>"</i>		<i>{ pg. 232</i>	

FOUND Stone 13" Deep, PLATED SPIKES 6" N-S of
CUT "X" in FILL + SPIKE ABOVE "X" in FILL, PK NAIL on SURFACE
+ PK NAILS 3.55' E. + 2.39' NNE in P.V.M.T. AS REF.
NOTE: RR SPIKE FOUND on SURFACE 1.5' E + 0.35' N
before I DUG, RETURNED it to LOCATION AFTER
DUGGING FOR Stone. L. May D.C.S. MAY 1985

G. F. Webster Secy. S.S.C.

Schiffler

Record of Surveys in Shelby County, Indiana.

Section *9* Township *11* North, Range *6* East.

Date, Intermediate Corners, &c., &c.	Corners.	Stone, Mark, &c.	Acres.	Hund.	Bearings, Trees, &c.	Diam.	Courses.	Dist.
	N	Stone			Ash	14	S 61 N	20
					Beech	10	S 10 E	25
	SO	"			Oak	36	E	2
	SS	"			Beech	8	S 31	31
					Ash	3	N	11
	R	"			Elm	12	N 26 E	9
					Linn	12	N	14
	Q	"			Hickory	12	S 48 E	31
					Oak St	30	S 10 N	30
	P ^{or} D Y	"			No Nit			
					Beech	24	S	40
					So	24	S 40 E	46
North End	of B-I	"	25		So	30	N 69 1/2 E	5
Same	C-H	"			Cherry	3	S 5 1/2 N	17 1/2
Plat. & R, Page 226-7 Aug 19th 1863					Beech	11	N 34 1/2 E	8 3/4
120 R N					Sugar	4	S 33 1/2 E	31
120 R 15 2 N					Rack, Surveyor			
Horniss, Surveyor	of V	"			No Nit			
17 1/2 Chus N	of X	Boulder			Beech	14	N 66 E	3
Same N					So	20	S 6 E	41
32 1/2 R N	of Same	"			So	20	N	4
	of Z	"			No Nit			
	of V	Stone			Wood	4	S 34 E	29
					Beech	16	E	39

Record of Surveys in Shelby County, Indiana.

Section 9 Township 11 North, Range 6 East.

Date, Intermediate Corners, &c., &c.	Corners.	Stone, Mark, &c.	Acres.	Hnd.	Bearings, Trees, &c.	Diam.	Courses.	Dist.
32 1/2 R A of McMiller Surveyor	X U K	Stone Boulder L " R.R.			Beech do No Nit	14 E 15 S 60 E	39 37	
John W. Whitlock " " "	P C A L	P.K. Nail Stone P.K. Nail "			See Tie File " " "		See Remarks, pg 232 " " "	

Record of Surveys in Shelby County, Indiana.

Section *10* Township *11* North, Range *6* East.

Date, Intermediate Corners, &c., &c.	Corners.	Stone, Mark, &c.	Acres.	Hand.	Bearings, Trees, &c.	Diam.	Courses.	Dist.
	N	Stone			Maple	24	S 43° E	12
	O	"			Elm	26	N 10° E	13
	W	"			Beech	18	N 41° E	9
	B	"			So	22	S 30° N	12
	F	"			R-Oak	36	S 60° N	21
	D	"			Beech	24	N 60° W	34
	R	"			B-Oak	48	S 13° E	18
	H	"			Beech	12	N 86° N	36
	G	"			So	14	S 38° E	21
					B-Ash	6	E	12
					B-Ash	12	N	24
					Ash	8	N	11
					Sugar	13	N 25° E	21
					Beech	14	N 63° N	19 1/2
					So	10	S 15 1/2° N	17
					Elm	4	N 34° E	7
					Ash	16	N 70° E	2 1/2

Rock Surveyor

Record of Surveys in Shelby County, Indiana.

Section 10 Township 11 North, Range 6 East.

Date, Intermediate Corners, &c., &c.	Corners.	Stone, Mark, &c.	Acres.	Hund.	Bearings, Trees, &c.	Diam.	Courses.	Dist.
A large Boulder that lay on its side in the road.	W	Boulder	Witness Stone				N 28 W	22
Witness Stone set where the large boulder formerly laid.			Sycamore			36	S 85 E	80 1/2
A large long Boulder	X	Boulder	Witness Stone				West	20.64
A large pear shaped Boulder in middle of pike	Y		Witness Stone				N 36 W	35
A large moss-covered boulder	Z		Witness Stone				S 64 W	30
Established by long time and common usage.					{ Beech	24	N 32 E	22
					{ Old notch	4 inches deep,		
Chain carriers { Eddie Norris		Flagman -	Albert Eberhart,					
Wm. M. Gray		Axman -	Jefferson Eberhart,					
Surveyed by Wm. R. Norris, Deputy County Surveyor.								
March 31 st 1884 and April 1 st 1884.								
Geo Murphy S. S. Co.								
This is to certify that the Chain carriers, Eddie Norris and Wm. M. Gray - the Flagman, Albert Eberhart - the ax man, Jefferson Eberhart, as above named, were duly sworn by me to discharge their several duties as above designated, immediately before the beginning of said Survey.								
This the 29 th day of May 1894.								
I further certify, that written notice was given to Willis Law of said Survey, more than Ten days, previous to said Survey, This June 16 th 1894.								
John W. Whitlock	E	P. K. Nail			See Tie File		See Remarks, pg. 232	
"	P	"			"		"	

Record of Surveys in Shelby County, Indiana.

Section // Township // North, Range *C* East.

Date, Intermediate Corners, &c., &c.	Corners.	Stone, Mark, &c.	Acres.	Innd.	Bearings, Trees, &c.	Diam.	Courses.	Dist.
	M	Stone			Beech	12	N	10
					So	12	N 78 E	34
	N	"			So	18	N 78 W	27
					So	22	S E	7
	P	"			Hickory	20	S 15 E	12
					Linn	12	N 35 W	18
	O	"			So	10	S 70 E	11
					So	8	N 35 W	35
Mcendricks, Co. Surveyor	W	"			S-Ash	27	N 20 E	28
					B-Ash		N 35 W	24
Nov 7 th 1836	G	"			Beech	16	S 46 E	22
	H. F.	Stones			Ash	6	N 57 W	15
Jargin, Surveyor					No Wit			
4 3 rods west of	D	Stone			No Wit. marked +			
18 3/5 rods south of	D	Walnut for a corner 8 in. diam			Based on 4 sides.			
4 3 rods west ^{a B} and 18 3/5 rods south		Set Stone			No. Wit.			
Millard F. Crawford S.S.C.					June 26, 1900,			

Record of Surveys in Shelby County, Indiana.

75

Section 12

Township 11

North, Range 6

East.

Date, Intermediate Corners, &c., &c.	Corners.	Stone, Mark, &c.	Acres.	Hnd.	Bearings, Trees, &c.	Diam.	Courses.	Dist.
<p>Nickols, Surveyor Jan 25-1909 Survey made for Wm H Swinford Ithamer Spurlin Phoebe Spurlin Charles Spurlin and Emily E Young</p>	N	Stone			H-Oak	40	S 30 N	10
	D	"			Calm	3	N 35 E	15
		"			So	24	S	20
		"			Oak	18	N	25
		"			Beech	14	S 2 N	42 1/2
		"			Ash	7	S 35 E	31
		"			Walnut	30	S 68 E	16
	L M W	"						
16.67 west of	X	Stone			Stone		South	20
16.51 west + 9.35 North of	S	Stone			Stone		west	20
<p>Samuel P Harris Surveyor Shelby County</p> <p>Feb. 28 1921 Survey made for John Depez & Edward Hawkins</p> <p>Located point 33 rods west 19 1/2 ft E. of X iron pipe Located point 33 rods 19 1/2 ft E. of 22 rods 10 1/2 ft N of X iron pipe which is 5 ft. S. of banks of creek.</p>								

Record of Surveys in Shelby County, Indiana.

Section 13 Township 11 North, Range 6 East.

Date, Intermediate Corners, &c., &c.	Corners.	Stone, Mark, &c.	Acres.	Hund.	Bearings, Trees, &c.	Diam.	Courses.	Dist.
Aug 21st 1861	B	Stone			Beech	20	S 39 E	20
					Buckeye	14	ct 80 N	18
	M	"			Sugar	14	S 31 1/2 N	28
					Beech	17	ct 37 N	4 1/2
4 R. S. & S. R. W.	C	"			Sycamore	48	S 39 N	31
					hackberry	20	ct 60 E	70
June 2nd 1864	X	¹³³⁶⁰²⁴ Boulder						
	S	" 13						
	N	" 13			Stone		N 61 E	36
					do		ct 2 1/2 E	38
Norris, Surveyor	P	Stone mka 13			Stone mka wit		West	21.12
3.88 chains E ^{252.78}		" " 53			a Red Stone		S 73 E	32
7.50 chains E ^{500.28}	"	" " 53			a Stone		S 15 W	7.26
2.273					Stone		N 53 E	34 1/2
20.88 ^{1374.78} chains E	P	Stone mka 53			Stone		N 53 E	39
39.83 " E	"	Stone mka 52			Stone mka + wit		N 30 E	20
3.92 chains E	E	Stone mka 13			Beech	15	S 31 E	33
7.67 chains E	"	Stone mka 15			B. Walnut	15	S 51 E	43
20.92 " E	E	" " 53			Buckeye	10	²⁶ S 32 W	65
33.92 " E	"	" " 52			W. cherry	12	S 47 E	44 1/2

J. Dugan, Surveyor.
 Mar. 27th, 1905. Relocated
 lost stone 52 rods East of
 stone noted above by Dugan
 as being 20.83 ch. East of

P Signed, James E. Norris - Assistant, J. H. Phillips.

Record of Surveys in Shelby County, Indiana.

Section 13 Township 11 North, Range 6 East.

Date, Intermediate Corners, &c., &c.	Corners.	Stone, Mark, &c.	Acres.	Hund.	Bearings, Trees, &c.	Diam.	Courses.	Dist.
<p>Mar. 27th, 1905 Re-established James E. Morris, S. S. Co. Dec. 18 1923 New Witness for</p>	P	No witness					N. E. N. W.	50 ft. 50 ft.

Record of Surveys in Shelby County, Indiana.

Section **4** Township **11** North, Range **6** East.

Date, Intermediate Corners, &c., &c.	Corners.	Stone, Mark, &c.	Acres.	Hund.	Bearings, Trees, &c.	Diam.	Courses.	Dist.
August 1861	O	stone			Beech	20 89 E	61	
Norris, Sumner,	Y	"			do	26 87 E	70	
					Sugar	20 11 N	57 1/2	
					Ash	10 87 N	83	
Mar 29 th 1869 6 th R. S. 6 th R. S. See page 93 of	E C	Boulder "			Oak No Wit	16 84 E	10	
Nov 21 st 1876	M	Stone mark			Ash	8 84 1/2 E	53	
53 R E	M	"			do	12 84 1/2 E	56	
53 R E	B	" " 53			Stone mark WIT	North	30 1/2	
11 Links E	Y	" " 80			Cherry	80 N	214	
11 Links E + 40 Rs	V	" " 40			Three Stones	N 60 E	57	
12 chains W	"	" " 14			no wit available			
12 chains W + 10 chains N	"	" " 6			no wit available			
Oct 3/77 Sugar SS 8	"	" " 6			Indian Arrow	2 S 15 E	34	
17.36 chains W. of	N	Stone mark +			No Wit			
17.36 chains W. of	C	Stone mark +			No Wit			
June 15-1903.								
S. P. Harris S. S. S.								
Sept 1940 wit. for P stones								
						S.W. N.W.		50 ft. 50 ft.

Record of Surveys in Shelby County, Indiana.

Section 14

Township 11

North, Range 6

East.

Date, Intermediate Corners, &c., &c.	Corners.	Stone, Mark, &c.	Acres.	Hund.	Bearings, Trees, &c.	Diam.	Courses.	Dist.
<i>wit. for</i>	<i>N.</i>	<i>Piece Cement Post Top 1/4 iron pipe</i>					<i>N. E. S. E.</i>	<i>33' 28' 7 1/2"</i>

Record of Surveys in Shelby County, Indiana.

93

Section / 3 Township / / North, Range 6 East.

Date, Intermediate Corners, &c., &c.	Corners.	Stone, Mark, &c.	Acres.	Hund.	Bearings, Trees, &c.	Diam.	Courses.	Dist.
<p>Mar 29th 1863 - 65th R.S. of 65th R.S. of</p>	<p>H C</p>	<p>Stone Boulder</p>			<p>Oak No Nit.</p>	16	S 3/4 E	10.
<p>Feb. 26th 1896. O to A = 2040 ch. A to P = 4030 ch. L to V = 4020 ch.</p>	<p>U N</p>	<p>Long Boulder in Road to gravel Road.</p>			<p>No Nit. N. H. Miller Surveyor</p>			
<p>wit. for</p>	<p>M.</p>	<p>stones</p>					<p>S.E. 50 li. S.W. 50 li.</p>	
	<p>O.</p>	<p>stones</p>					<p>N.E. 50 li. N.W. 50 li.</p>	
	<p>L</p>	<p>stones</p>					<p>N.W. 50 li. S.W. 50 li.</p>	
<p>wit for</p>	<p>L</p>	<p>stones</p>						
<p>" "</p>	<p>Y</p>	<p>E. end culv headwall N End</p>					<p>N. 51° W. 50' 7" S 72° W 54'</p>	

C. F. Webster S. & C.

Record of Surveys in Shelby County, Indiana.

99

Section / 6 Township / / North, Range 6 East.

Date, Intermediate Corners, &c., &c.	Corners.	Stone, Mark, &c.	Acres.	Hund.	Bearings, Trees, &c.	Diam.	Courses.	Dist.
	H	Stone			Beech	24	N 10 N	36
					do	24	S 72 E	26
	I	"			Oak	22	N 35 N	6
					Beech	9	S 30 N	2
	K	"			Ash	24	S	14
					Beech	18	N	33
	R	"			do	14	S	8
					Sugar	12	N 35 E	14
	O	"			Ash	12	N 35 N	25
					Beech	8	N 80 E	24
	W	"			do	24	N 42 E	29
					do	18	N 30 N	21
	T	"			Calm	24	S 30 E	34
					do	14	N 15 N	31
	U	"			N-Oak	30	N 10 E	12
					Ash	18	S N	13
J. B. Kickals & S.	E	Boulders			Bk Walnut	10	S 35 N	48
					Stakes			
	C	Stone			Sugar		S N	
	B	Keage "			Beech	18	N 8 E	27
					N-Oak	30	S 29 E	22
	M	L "			Sugar	22	S 35 N	21
					do	12	N 30 N	30

Record of Surveys in Shelby County, Indiana.

Section *16* Township *11* North, Range *6* East.

Date, Intermediate Corners, &c., &c.	Corners.	Stone, Mark, &c.	Aeres.	Hund.	Bearings, Trees, &c.	Diam.	Courses.	Dist.
	N	Stone			Beech	14	N 5° E	15
					do	15	N 3° N	13
20 R. E.	of Q	" He. Boulder	50		No Nit			
					Beech	16	N 4 1/2° E	22
					Boulder	18	N 1/2° E	20
20 R. E.	of R	Large " "	"		No Nit			
June 13 th 1868	M	Small "			<i>Not in Survey</i> Beech	15	S 5° 8' N	17 1/2
Miller, Surveyor					do	12	N 62° N	25
May 5. 1905 set	R	Large Boulder			No witness available			
20 rods East of					W. H. Isley, Dep. Sur. S. S. C.			
March 28, 1905 set	X	Large Boulder			Anchor Post	14	N. 4° E	21
20 rods West of	N	" +						
and found Stone already set					W. H. Isley, Dep. S. S. C.			
20 " " "								
7.27 chains West of	M	Mark + Boulder			Poplar	15	S. 86° W.	.24
7.33 " " "	W	" " +			Stone		S.	.25
Sept. 1940 made witness for X stone			NW. 50 li.					
			SW 50 li.					
Wit for Z culv headwall			N.E. 50' 4"					
			S.E. 52' 7"					

Record of Surveys in Shelby County, Indiana.

101

Section

Township

North, Range

East.

Date, Intermediate Corners, &c., &c.	Corners.	Stone, Mark, &c.	Acres.	Hund.	Bearings, Trees, &c.	Diam.	Courses.	Dist.
<i>wit. for</i>	<i>W.</i>	<i>stones</i>			<i>stones</i>		<i>{ S.E</i>	<i>2 r.</i>
<i>wit. for</i>	<i>P</i>	<i>stones</i>			<i>stones</i>		<i>{ S.W</i> <i>{ S.W.</i> <i>{ N.W.</i>	<i>2 r.</i> <i>2 r.</i> <i>2 r.</i>

Record of Surveys in Shelby County, Indiana.

105

Section *17* Township *11* North, Range *6* East.

Date, Intermediate Corners, &c., &c.	Corners.	Stone, Mark, &c.	Acres.	Hhd.	Bearings, Trees, &c.	Diam.	Courses.	Dist.
Stones set ^{at} all the Corners Nickols Surveyor,	K	Stone			Beech	8	S 42 N	40
	H	"			So	12	N 31 N	49
	D	"			So	8	S 39 N	6
Rock, e. s. (See R. P 228)					elm	6	N 10 E	24
72 1/2 R. Cr. of		"			No Nit			
97 1/2 R. Cr. of Same		"			No Oak	24	N 70 E	149
97 1/2 R. Cr. & 79 R. E. of Same		"			Mulberry	4	S 43 N	64
		"			So	8	N	12
		"			Beech	12	S	3
Same as above & 25 R. S. of Same		"			Poplar	30	N 49 E	14
		"			Beech	8	S 2 E	44
72 1/2 R. Cr. & 79 R. E. of Same		"			No Nit			
97 1/2 R. Cr. & 79 R. E. of Same		"			"			
Same & date, unknown					Former Surveyor			
wit. for	V.	culv. headwalls					N. E.	50' 4"
"	Y	stones					S. E.	52' 7"
"	B	stones					S. E.	2 r.
Nov 14. 1941 wit. for							S. W.	2 r.
							N. W.	} 2 r.
							S. W.	
John W. Whitlock 16, April, 1975	E	I. Pin			See Tie File		See Remarks	pg 232

Record of Surveys in Shelby County, Indiana.

Section / 8 Township // North, Range 6 East.

Date, Intermediate Corners, &c., &c.	Corners.	Stone, Mark, &c.	Acres.	Hand.	Bearings, Trees, &c.	Diam.	Courses.	Dist.
Rock Surveyor June 12 th 1854 - S.N.G.	D	Stone			Sugar	8	S 15° E	23
	Y	"			Beech	12	N 30° W	43
	Y	"			do	18	N 17° E	7
	Y	"			do	16	S 30° W	18
80 R.S. of	L	Stone			do Nit			
	L	Stone			Jargin Surveyor			
	L	Stone			do Nit Given			
	L	Stone			Unknown Surveyor			
	Z	See &	Dec 19					
	Y	Stone	marked	Y	Stone		S 62° E	52
	O	"	"	O	"		S 89° E	22
28 ³⁰ / ₁₀₀ Chains North of	X-Y	"	"	6	"		S 52 1/4° E	34
28 ³⁰ / ₁₀₀ " " of	"Y"	"	"	28	"		N 21° E	36
May 14 th 1877 J. Sugar S.S.C.	"Y"	"	"	28	"		S 11° W	34
" 28 th 1877 J. Sugar S.S.C.	W	Stone	marked	W	Stone		N W	
14 ⁹³ / ₁₀₀ Chains W of	T	"	"	T	Stone		N 5 W	32
9 ⁸⁶ / ₁₀₀ " W of	W	Stone			Stone		N 56° E	26
	X	"			"		N 58 1/2° E	30
	S	"	marked	S	Beech	10	N 50 6	32 1/2
14 ⁹³ / ₁₀₀ Chains W of	T	Stone			Poplar	24	N 48° W	74 1/2
June 8 th 1877 J. Sugar S.S.C.	T	Stone			Beech	12	N 44° E	18
	T	Stone			Poplar	50	S 48° E	76 1/2

Section 18 Township 11 North, Range 6 East.

Date, Intermediate Corners, &c., &c.	Corners.	Stone, Mark, &c.	Acres.	Hund.	Bearings, Trees, &c.	Diam.	Courses.	Dist.
20 ⁰⁰ Chains S of June 8 th 1877 Sugar SS. C	L	Stone mark 80			Stone		N	13
April 8 th 1892 Found old pin near bank of big ditch Thomas S. H. in log.	X	Stone			Perthumato Grey bar 14 long S. 58 ⁰⁰ E		18 1/2 ft	
					Blue Poul ch " N. 61 ⁰⁰ E.		18 1/2 ft	
Sept. 3 rd 1897. W 20.18 1/2 ch to Stone W to X 20.18 1/2 ch Dugan's Corner 1/2 of X to 1/2 X to Y = 10.84 ch	V W X X to Y	Stone by former Surveyor " " " " Lime Stone 6x6x18 and corner 9.86 ch West of X are			Stone		North	28
					84 1/2 L. part.			
					C. F. Webster, S. S. C.			
John W. Whitlock 16, April, 1925	A	I. Pin			See Tie File		See Remarks pg 23	

Record of Surveys in Shelby County, Indiana.

Section 19 Township 11 North, Range 6 East.

Date, Intermediate Corners, &c., &c.	Corners.	Stone, Mark, &c.	Acres.	Hund.	Bearings, Trees, &c.	Diam.	Courses.	Dist.
	B	Stone			Beech	10	N 40° E	18
					So	12	N 22° W	21
	N				So	18	S 32° W	11
					So	20	N 15° E	38
	O				Sugar	12	W	20
					So	9	N 48° E	17 1/2
	P				So	6	N 30° E	30
					Beech	6	S 60° W	40
	M				So	36	S 32° W	12
					H-Oak	24	N 35° E	16
Unintelligible Corner	☉				Beech	10	S 73° E	—
Part N 1/2 S. E. qtr		Stone			Kickols, Surveyor			
					Beech	10	S 71° W	12 1/2
					So	6	E	7
					So	4	N 71 1/2° W	27 1/2
					So	5	S 14° E	23 1/2
					So	12	N 80° E	27 1/2
					Sugar	4	S	5
					No Nit			
56 5/2 R. E. Same E	P Z	Boulder "			Kinchel, Surveyor			
Sept 28th 1866	E D.	L " 19. Boulder			No Nit			
					Bk Walnut	25	N 48° E	48
					Korniss Surveyor			

Record of Surveys in Shelby County, Indiana.

Section

19

Township

//

North, Range

6

East.

Date, Intermediate Corners, &c., &c.	Corners.	Stone, Mark, &c.	Acres.	Hund.	Bearings, Trees, &c.	Diam.	Courses.	Dist.
Corrected and reset March th 1877 J Sugar v. S.S.C	E Stone E 19				Stone do		N 32 E S 77 E	54 49

Record of Surveys in Shelby County, Indiana.

Section 20 Township 11 North, Range 6 East.

Date, Intermediate Corners, &c., &c.	Corners.	Stone, Mark, &c.	Acres.	Hund.	Bearings, Trees, &c.	Diam.	Courses.	Dist.
	V	2 Boulder			Beech	36	ct 31 N	52
		20,			Hickory	24	ct 41 E	96 1/2
113 R E of	X	"			Beech	22	ct 13 1/2 E	52
		"			do	16	ct 34 N	69 1/2
N.E. Cor. 36 R ct of S E		"			do	24	ct	78
		"			do	17	ct 38 N	78
N.W. Cor. 36 R ct of Same	V	Stone			No Nit			
16 R 15 G ct of	V	"			Sugar	16	ct 75 N	30
		"			do	18	ct 24 N	62
33 R 3 G ct of Same		"			Beech	20	ct 6 1/2 N	43
		"			Oak	40	ct 82 N	84 1/2
16 R 13 G ct of S. E. Cor.		"			Beech	24	ct 4 1/2 N	48 1/2
See Remarks Page 228, Rock Surveyor.		"			do	36	ct 72 E	23
	A	"			No Nit			
	B	"			Beech	14	ct 46 E	88
		"			do	11	ct 38 1/2 N	33
Old Stone found wrong, Corrected	C	"			No Nit			
See Remarks Page 230	D	"			Hickory	20	ct 18 1/2 N	57
" " " 228	E	"			Beech	19	ct 9 E	57
Same as C.	I	"			Mulberry 1/2	N		5
	K	"			No Nit			
	L	"			"			

Record of Surveys in Shelby County, Indiana.

129

Section *21* Township *11* North, Range *6* East.

Date, Intermediate Corners, &c., &c.	Corners.	Stone, Mark, &c.	Acres.	Hund.	Bearings, Trees, &c.	Diam.	Courses.	Dist.
<p><i>Apr 9th 1846</i></p> <p><i>Rock Surveyor</i></p> <p><i>20. R. S</i></p> <p><i>30. R. E</i></p> <p><i>30. R. E.</i></p>	<i>D</i>	<i>Stone</i>			<i>Beech</i>	<i>10</i>	<i>N 60° E</i>	<i>9</i>
	<i>O</i>	<i>"</i>			<i>do</i>	<i>3'</i>	<i>S 36° E</i>	<i>37</i>
	<i>N</i>	<i>"</i>	<i>1/2 Boulder</i>		<i>do</i>	<i>10</i>	<i>N 25° W</i>	<i>33</i>
	<i>R</i>	<i>"</i>	<i>"</i>		<i>do</i>	<i>10</i>	<i>N 20° W</i>	<i>14</i>
	<i>S</i>	<i>"</i>	<i>"</i>		<i>do</i>	<i>6</i>	<i>S 24° E</i>	<i>20</i>
	<i>O</i>	<i>"</i>	<i>"</i>		<i>do</i>	<i>6</i>	<i>W</i>	<i>1</i>
	<i>X</i>	<i>"</i>	<i>"</i>		<i>do</i>	<i>12</i>	<i>S 60° E</i>	<i>16</i>
	<i>S</i>	<i>"</i>	<i>"</i>		<i>do</i>	<i>6</i>	<i>N 74° W</i>	<i>45</i>
	<i>H</i>	<i>"</i>	<i>"</i>		<i>do</i>	<i>12</i>	<i>N 36° W</i>	<i>40</i>
	<i>D</i>	<i>"</i>	<i>"</i>		<i>No Nit</i>			
<p><i>Oct 30 1920 see page 130 for</i></p> <p><i>wit. for</i></p> <p><i>John W. Whitlock</i></p>	<i>Z</i>	<i>Stone</i>			<i>Beech</i>	<i>12</i>	<i>W</i>	<i>4</i>
	<i>C.</i>	<i>"</i>	<i>"</i>		<i>No Nit</i>			
	<i>E.</i>	<i>"</i>	<i>"</i>		<i>Miller's Surveyor</i>			
	<i>V</i>	<i>"</i>	<i>"</i>		<i>See Tie File</i>		<i>See Remarks, pg 232</i>	
	<i>Z</i>	<i>Stone</i>					<i>N. W.</i>	<i>50 li.</i>
	<i>E.</i>	<i>Culv. headwalls</i>					<i>S. W</i>	<i>50 li.</i>
							<i>N. E.</i>	<i>50' 4"</i>
							<i>S. E.</i>	<i>52' 7"</i>

Record of Surveys in Shelby County, Indiana.

135

Section *22*

Township *11*

North, Range *6*

East.

Date, Intermediate Corners, &c., &c.	Corners.	Stone, Mark, &c.	Acres.	Hund.	Bearings, Trees, &c.	Diam.	Courses.	Dist.
<i>Rock. Surveyor</i>	<i>C</i>	<i>Stone</i>			<i>No Nit</i>			
	<i>N</i>	<i>"</i>			<i>Sugar</i>	<i>40</i>	<i>N</i>	<i>12</i>
					<i>N-Beech</i>	<i>4</i>	<i>S 30 E</i>	<i>7</i>
		<i>Z</i>	<i>"</i>		<i>Walnut</i>	<i>5</i>	<i>N 81 E</i>	<i>40</i>
		<i>K</i>	<i>Stone</i>		<i>Buckeye</i>	<i>18</i>	<i>S 45 W</i>	<i>2</i>
		<i>H</i>	<i>"</i>		<i>Blue ash</i>	<i>10</i>	<i>N 83 E</i>	<i>96</i>
		<i>"</i>		<i>W Walnut</i>	<i>18</i>	<i>S 85 E</i>	<i>100</i>	
<i>March 18 1942 Located Position for L. See E. Altman.</i>	<i>L</i>	<i>Set conc. Block</i>			<i>+ on top</i>		<i>wit. pc. fire south</i>	<i>clay 1 chais</i>
<i>John W. Whitlock</i>	<i>Z</i>	<i>I. Pin</i>			<i>See Tie File</i>		<i>See Remarks, pg. 232</i>	
<i>"</i>	<i>R</i>	<i>Spike</i>			<i>"</i>		<i>"</i>	

Record of Surveys in Shelby County, Indiana.

Section *23*

Township *11*

North, Range *6*

East.

Date, Intermediate Corners, &c., &c.	Corners.	Stone, Mark, &c.	Acres.	Hund.	Bearings, Trees, &c.	Diam.	Courses.	Dist.
	M	Stone			Beech	11	ct 81 N	20 1/2
					do	18	ct 6 1/2 E	40
	N	"			do	16	ct 60 1/2 N	27
					do		8 81 1/2 E	32
	C	"			Black ash	30	ct 48 N	47
<i>60 R S</i>	<i>of same</i>	"			Beech		8 40 1/2 N	65
					ash	8	8 80 N	33 1/2
<i>Rock, Dumeyor,</i>					Beech	10	ct 64 N	38
<i>July 2nd 1862</i>	<i>1/2 of</i>	<i>I-K</i>	<i>Boulder</i>		<i>Heikony</i>	<i>18</i>	<i>ct 43 1/2 E</i>	<i>10</i>
					<i>Boulder</i>		<i>8 80 E</i>	<i>9</i>
<i>Cross, Dumeyor</i>	<i>K</i>	"			<i>Gum</i>	<i>30</i>	<i>8 38 1/2 N</i>	<i>108 1/2</i>
<i>April 12th 1887.</i>								
<i>18.55 ch S. of</i>	<i>N</i>	<i>Lime Stone</i>			<i>No wit available.</i>			
<i>18.55 " S. of</i>	<i>L</i>	<i>Boulder</i>			<i>ash</i>	<i>4</i>	<i>N.W</i>	<i>13 1/2</i>
<i>Finley survey.</i>					<i>"</i>	<i>6</i>	<i>N.W</i>	<i>4 1/2</i>
<i>March 18 1942 Located</i>								
<i>Position for</i>	<i>P.</i>	<i>Concrete Block + on top</i>			<i>Set piece fire Clay S.</i>			<i>1.00 ch.</i>

Record of Surveys in Shelby County, Indiana.

Section *24*

Township *11*

North, Range *6*

East.

Date, Intermediate Corners, &c., &c.	Corners.	Stone, Mark, &c.	Acres.	Hund.	Bearings, Trees, &c.	Diam.	Courses.	Dist.
<i>July 2nd 1862 - 1855</i>	<i>A</i>	<i>Stone</i>			<i>Beech</i>	<i>20</i>	<i>N 71 W</i>	<i>33</i>
					<i>So</i>	<i>15</i>	<i>N 44 W</i>	<i>33</i>
	<i>N</i>	<i>"</i>			<i>Elm</i>	<i>6</i>	<i>N 71 1/2 W</i>	<i>39 1/2</i>
					<i>Beech</i>	<i>10</i>	<i>N 33 1/2 E</i>	<i>37 1/2</i>
<i>Sargin Sumner July 2nd 1862</i>	<i>L</i>	<i>"</i>					<i>N 4 1/2 W</i>	<i>31</i>
	<i>C</i>	<i>"</i>			<i>So</i>	<i>10</i>	<i>N 3 E</i>	<i>49</i>
	<i>E</i>	<i>L Boulder,</i>			<i>B-Oak</i>	<i>30</i>	<i>N 81 1/2 E</i>	<i>170</i>
					<i>Boulder</i>	<i>23</i>	<i>N 36 W</i>	<i>14 1/2</i>
	<i>D</i>	<i>"</i>			<i>N-Elm</i>	<i>36</i>	<i>N 25 W</i>	<i>89</i>
					<i>Norris, Sumner</i>			
<i>Chain carriers. - Eddie Norris, and the Sullivan Boys, Flagmen. - The Sullivan Boys, Axman. - N. H. Sullivan</i>	<i>O</i>	<i>Sandstone</i>			<i>No Witnesses</i>			
	<i>Survey and Partition of John Sullivan's Estate made Oct. 3rd, 4th, 5th, 6th and 8th, 1883. By Wm R. Norris, Deputy County Surveyor.</i>							
<i>20 ch. 60 ft. south of</i>	<i>M</i>	<i>stone</i>	<i>no. wit.</i>					
<i>20 " 60 " " "</i>	<i>L</i>	<i>"</i>	<i>"</i>					
<i>January 9th 1900</i>	<i>Millard F. Crawford Surveyor.</i>							

Record of Surveys in Shelby County, Indiana.

153

Section *23* Township *11* North, Range *6* East.

Date, Intermediate Corners, &c., &c.	Corners.	Stone, Mark, &c.	Acres.	Hund.	Bearings, Trees, &c.	Diam.	Courses.	Dist.
<p><i>Jan 1860 - For Gorton.</i></p> <p><i>The proper letters should be used to designate the different corners but I cannot tell what shape the tract of Gandy is.</i></p> <p><i>Webster</i></p>	<p><i>V</i></p>	<p><i>Stone</i></p>	<p><i>15 63</i></p>		<p><i>Oak</i></p> <p><i>do</i></p> <p><i>Hackberry</i></p> <p><i>W-Oak</i></p> <p><i>Box Elder</i></p> <p><i>Bur Oak</i></p> <p><i>Willow</i></p> <p><i>do</i></p>	<p><i>18</i></p> <p><i>40</i></p> <p><i>24</i></p> <p><i>6</i></p> <p><i>10</i></p> <p><i>12</i></p> <p><i>10</i></p> <p><i>6</i></p>	<p><i>N 19 1/2 W</i></p> <p><i>S 43 E</i></p> <p><i>S 58 W</i></p> <p><i>N 25 E</i></p> <p><i>S 70 E</i></p> <p><i>N 30 W</i></p> <p><i>S 83 E</i></p> <p><i>N 18 W</i></p>	<p><i>16</i></p> <p><i>24</i></p> <p><i>7</i></p> <p><i>35</i></p> <p><i>19</i></p> <p><i>31</i></p> <p><i>22</i></p> <p><i>24</i></p>
<p><i>Oct 15th 1857 - 8 R N of</i></p> <p><i>Jargin, Surveyor</i></p>	<p><i>B</i></p> <p><i>Y</i></p> <p><i>O</i></p>	<p><i>Stone</i></p> <p><i>"</i></p> <p><i>"</i></p>	<p><i>82</i></p>	<p><i>"</i></p>	<p><i>Ed. Michel Surveyor</i></p> <p><i>N Nit</i></p> <p><i>Oak</i></p> <p><i>Beech</i></p> <p><i>B-Halnut</i></p> <p><i>Buckeye</i></p>	<p><i>16</i></p> <p><i>24</i></p> <p><i>48</i></p> <p><i>10</i></p>	<p><i>N 18 W</i></p> <p><i>N 30 E</i></p> <p><i>S 38 W</i></p> <p><i>N 46 W</i></p>	<p><i>12</i></p> <p><i>24</i></p> <p><i>3</i></p> <p><i>27</i></p>

Section *26*

 Township *11*

 North, Range *6*

East.

Date, Intermediate Corners, &c., &c.	Corners.	Stone, Mark, &c.	Acres.	Hund.	Bearings, Trees, &c.	Diam.	Courses.	Dist.		
<i>Aug 10th 1835</i> <i>Sargin, Surveyor</i>	<i>X P</i>	<i>Stones</i>			<i>No Nit</i>					
	<i>L</i>	<i>"</i>			<i>"</i>					
	<i>C</i>	<i>"</i>			<i>Beech</i>	<i>24</i>	<i>S 30 W</i>	<i>42</i>		
					<i>So</i>	<i>24</i>	<i>N 48 W</i>	<i>40</i>		
		<i>O</i>	<i>"</i>		<i>Sycamore</i>	<i>96</i>	<i>S</i>	<i>26</i>		
	<i>of</i> <i>of</i> <i>of</i> <i>of</i> <i>of</i> <i>of</i> <i>of</i> <i>of</i> <i>of</i>	<i>B</i>	<i>"</i>			<i>Beech</i>	<i>56</i>	<i>S 33 W</i>	<i>23</i>	
						<i>So</i>	<i>16</i>	<i>S 78 E</i>	<i>15</i>	
			<i>A</i>	<i>Boulder</i>			<i>Ash</i>	<i>15</i>	<i>N 55 W</i>	<i>43</i>
			<i>N</i>	<i>"</i>			<i>Walnut</i>	<i>30</i>	<i>N 11 W</i>	<i>79</i>
			<i>D</i>	<i>L-Stone</i>			<i>Beech</i>	<i>15</i>	<i>S 41 E</i>	<i>31</i>
						<i>So</i>	<i>24</i>	<i>S 72 E</i>	<i>37</i>	
		<i>C</i>	<i>Boulder</i>			<i>No Nit</i>				
		<i>L</i>	<i>L Stone</i>			<i>"</i>				
		<i>A</i>	<i>"</i>			<i>Hickory</i>	<i>8</i>	<i>N 13 E</i>	<i>95</i>	
		<i>D</i>	<i>"</i>			<i>Beech</i>	<i>12</i>	<i>N 3 E</i>	<i>2</i>	
<i>33 R, E</i> <i>7 3/4 Chus S</i> <i>6 1/2 R W</i> <i>7 3/4 Chus S</i> <i>33 R, E</i> <i>6 3/8 R, W</i> <i>Miller, Surveyor</i>	<i>N</i>	<i>"</i>			<i>Walnut</i>	<i>24</i>	<i>N 24 E</i>	<i>35</i>		
	<i>L</i>	<i>Boulder</i>			<i>Locust</i>	<i>18</i>	<i>N 47 E</i>	<i>39</i>		
		<i>Stone</i>			<i>Walnut</i>	<i>15</i>	<i>N 49 W</i>	<i>68</i>		

Record of Surveys in Shelby County, Indiana.

165

Section *27* Township *11* North, Range *6* East.

Date, Intermediate Corners, &c., &c.	Corners.	Stone, Mark, &c.	Acres.	Hund.	Bearings, Trees, &c.	Diam.	Courses.	Dist.
<i>Aug 14th 1855</i>	<i>N</i>	<i>Stone</i>			<i>hackberry</i>	<i>20</i>	<i>N 62 W</i>	<i>18</i>
					<i>Buckeye</i>	<i>14</i>	<i>N 89 W</i>	<i>15</i>
<i>Sargin, Surveyor</i>	<i>M, B,</i>	<i>"</i>			<i>No Nit</i>			
<i>June 3rd 1887</i>	<i>D</i>	<i>Stone</i>			<i>Willow</i>	<i>10</i>	<i>N 66 E</i>	<i>9</i>
<i>8 rods W of</i>	<i>"</i>	<i>"</i>			<i>Willow</i>	<i>13</i>	<i>N 82 E</i>	<i>23</i>
<i>5 " S of</i>	<i>"</i>	<i>"</i>			<i>} no wit available to above stones</i>			
<i>8 rods W and 5 rods S of</i>	<i>"</i>	<i>"</i>						
<i>June 17 1918 Relocated</i>	<i>B</i>	<i>20.024 W. of A. Stone + on top.</i>			<i>Wit. Stone W. 50 ft.</i>			
<i>20.57 ch. E of N located</i>	<i>M</i>	<i>Iron pipe about 4 ft. long in low bottom</i>						<i>Geo. F. Oltman.</i>
<i>John W. Whitlock</i>	<i>F</i>	<i>I. Pin</i>			<i>See Tie File</i>		<i>See Remarks, pg. 232</i>	

Record of Surveys in Shelby County, Indiana.

171

Section *27* Township *11* North, Range *6* East.


Date, Intermediate Corners, &c., &c.	Corners.	Stone, Mark, &c.	Acres.	Hund.	Bearings, Trees, &c.	Diam.	Courses.	Dist.
<i>Mar 11th 1864</i>	<i>O</i>	<i>Boulder</i>			<i>No Mt</i>		<i>Recorded</i>	
<i>5.83 chms N</i>	<i>of Same</i>	<i>"</i>			<i>Sugar</i>	<i>5</i>	<i>S 30 N</i>	<i>32</i>
					<i>So</i>	<i>16</i>	<i>E</i>	<i>37</i>
<i>15.16 chms N</i>	<i>of Same</i>	<i>"</i>			<i>Beech</i>	<i>20</i>	<i>S 18 N</i>	<i>24</i>
					<i>So</i>	<i>20</i>	<i>N 20 N</i>	<i>31</i>
<i>21.83 chms N</i>	<i>of Same</i>	<i>"</i>			<i>So</i>	<i>20</i>	<i>N 63 N</i>	<i>37</i>
					<i>So</i>	<i>10</i>	<i>S 36 N</i>	<i>71</i>
<i>27.83 chms N</i>	<i>of Same</i>	<i>"</i>			<i>Sugar</i>	<i>3</i>	<i>N 41 N</i>	<i>31</i>
					<i>Beech</i>	<i>4</i>	<i>N 76 N</i>	<i>42</i>
	<i>D</i>	<i>Gorge "</i>			<i>Sugar</i>	<i>13</i>	<i>S 33 N</i>	<i>40</i>
<i>Armiss, Sumner</i>					<i>B-Walnut</i>	<i>13</i>	<i>N 10 N</i>	<i>40</i>
<i>April 12 - 1907</i>								
<i>5.25 chms ^{west} + 10.50 chms North of</i>	<i>W</i>	<i>Limestone</i>			<i>No wit</i>			
<i>10.50 chms North + 5 chms East of</i>	<i>Same</i>	<i>limestone</i>			<i>Limestone</i>		<i>East</i>	<i>19</i>
<i>Oct 30 1920 see page 230 for</i>	<i>E.</i>							
<i>John W. Whitlock</i>	<i>A</i>	<i>I. Pin</i>			<i>See tie file</i>		<i>See Remarks, pg 232</i>	

Record of Surveys in Shelby County, Indiana.

Section *29* Township *11* North, Range *6* East.

Date, Intermediate Corners, &c., &c.	Corners.	Stone, Mark, &c.	Acres.	Hund.	Bearings, Trees, &c.	Diam.	Courses.	Dist.
<i>May 11th 1854</i>	<i>W.M.</i>	<i>Stones</i>			<i>Ch Nit</i>			
	<i>S.</i>	<i>Stone</i>			<i>Beech</i>	<i>36</i>	<i>N 10 E</i>	<i>3</i>
					<i>do</i>	<i>12</i>	<i>N 18 W</i>	<i>66</i>
		<i>O</i>	<i>"</i>		<i>do</i>	<i>20</i>	<i>N 3 W</i>	<i>30</i>
		<i>R</i>	<i>"</i>		<i>Sugar</i>	<i>20</i>	<i>N 67 W</i>	<i>43</i>
	<i>1/2 of</i>	<i>R-O</i>	<i>"</i>		<i>Beech</i>	<i>48</i>	<i>N 68 E</i>	<i>16</i>
					<i>N Walnut</i>	<i>8</i>	<i>N 70 W</i>	<i>7 3/4</i>
				<i>Beech</i>	<i>8</i>	<i>N</i>	<i>33</i>	
<i>Mar 11th 1864</i>	<i>N</i>	<i>L. Boulder</i>			<i>Ch Nit</i>			
<i>3.83</i> <i>Chms</i> <i>Ch</i>	<i>of Same</i>	<i>" 3.83</i>			<i>"</i>			
<i>15.16</i> <i>"</i> <i>Ch</i>	<i>of Same</i>	<i>" 15.16</i>			<i>"</i>			
<i>21.83</i> <i>"</i> <i>Ch</i>	<i>of Same</i>	<i>" 21.83</i>			<i>"</i>			
<i>27.83</i> <i>"</i> <i>Ch</i>	<i>of Same</i>	<i>" 27.83</i>						
	<i>C.</i>	<i>Stone</i>			<i>Ch Nit</i>			
	<i>L.</i>	<i>L. Boulder</i>						
<i>3.83</i> <i>Chms</i> <i>Ch</i>	<i>of Same</i>	<i>"</i>			<i>Beech</i>	<i>24</i>	<i>N 87 E</i>	<i>43</i>
<i>15.16</i> <i>Chms</i> <i>Ch</i>	<i>of Same</i>	<i>"</i>			<i>Butternut</i>	<i>20</i>	<i>N 39 W</i>	<i>33</i>
<i>21.83</i> <i>Chms</i> <i>Ch</i>	<i>of Same</i>	<i>"</i>			<i>Beech</i>	<i>24</i>	<i>N 34 W</i>	<i>67</i>
					<i>do</i>	<i>30</i>	<i>N 30 W</i>	<i>38</i>
<i>27.83</i> <i>Chms</i> <i>Ch</i>	<i>of Same</i>	<i>"</i>			<i>do</i>	<i>24</i>	<i>N 76 W</i>	<i>38</i>
					<i>do</i>	<i>24</i>	<i>N 20 W</i>	<i>60</i>
<i>27.83</i> <i>Chms</i> <i>Ch</i>	<i>of Same</i>	<i>"</i>			<i>Sugar</i>	<i>30</i>	<i>N 86 E</i>	<i>62</i>
<i>Norris's Surveyor</i>					<i>Beech</i>	<i>24</i>	<i>N 47 E</i>	<i>71</i>

Section *29* Township *11* North, Range *6* East.

Date, Intermediate Corners, &c., &c.	Corners.	Stone, Mark, &c.	Acres.	Hund.	Bearings, Trees, &c.	Diam.	Courses.	Dist.
<i>Mar 11th 1864</i> <i>Oct 30. 1929 See page 230 for</i>		<i>Boulder</i> " " "			<i>No Nit</i> <i>Walnut 18 ct 42° 37</i> <i>Beech 18 ct 27° 47</i> <i>Sycamore 20 ct 37° 46</i> <i>Beech 20 ct 77° 47</i>			
<i>J. M. Elliott & Sumner</i> <i>May 11th 40 R. S. of</i> <i>1854, 16 R. E. of last named</i>	<i>Z</i>	<i>L. Stone</i>	<i>4</i>	<i>u</i>	<i>No Nit</i> <i>No Nit</i>			
					<i>Jarvis Sumner</i>			

Record of Surveys in Shelby County, Indiana.

183

Section *20*

Township *11*

North, Range *6*

East.

Date, Intermediate Corners, &c., &c.	Corners.	Stone, Mark, &c.	Acres.	Hund.	Bearings, Trees, &c.	Diam.	Courses.	Dist.
<i>Nickols, Surveyor</i> <i>Dec-1833</i>	N	Stone			Beech	20	N 66° E	40
	S	"			To	27	N 50° W	17
	U	"			Calm	18	N 70° E	3
	C. H	"	S		Sugar	16	N 20° E	16
	L. R	"	"		Gum	12	N 33° E	42 1/2
	A. D.	"	"		Beech	8	N 33° E	44
<i>Sargin, Surveyor</i> <i>Mar 30th 1864</i> <i>9 to Chusel of</i> <i>Same of</i>	XVZ	"			No Nit			
	T	"			"			
	C	"	Boulder	21		No Nit		
<i>Set stone 1222.6 ft south of</i> <i>by line fence & same distance south of</i> <i>in middle of road in partition</i> <i>of Emanuel Muck Estate</i>	D	"			"			
	E	"			"			
					<i>Norris, Surveyor</i>			
					<i>April 23 1931</i> <i>Ralph Cochran, Co Surveyor</i>			

Record of Surveys in Shelby County, Indiana.

189

Section *B* /

Township *1* /

North, Range *6*

East.

Date, Intermediate Corners, &c., &c.	Corners.	Stone, Mark, &c.	Acres.	Hund.	Bearings, Trees, &c.	Diam.	Courses.	Dist.
<i>Mar 4th 1854</i>	<i>O Y</i>	<i>Stones</i>			<i>No Nit</i>			
<i>Dec 1st 1859</i>	<i>WM</i>	<i>"</i>			<i>"</i>			
	<i>N. B</i>	<i>"</i>			<i>"</i>			
	<i>D-E</i>	<i>"</i>			<i>"</i>			
	<i>O-D</i>	<i>"</i>			<i>"</i>			
<i>Margin, Surveyor</i>	<i>D</i>	<i>"</i>			<i>Beech</i>	<i>16</i>	<i>N 33° E 23'</i>	

Record of Surveys in Shelby County, Indiana.

195

Section *B2*

Township */ /*

North, Range *6*

East.

Date, Intermediate Corners, &c., &c.	Corners.	Stone, Mark, &c.	Acres.	Hund.	Bearings, Trees, &c.	Diam.	Courses.	Dist.
<i>Feb 10th 1834</i>	<i>1/2 of W-U</i>	<i>stone</i>	<i>40</i>		<i>Sugar</i>	<i>14</i>	<i>N 30° E</i>	<i>73</i>
					<i>Beech</i>	<i>20</i>	<i>S 73° E</i>	<i>46</i>
	<i>1/2 of W-T</i>	<i>"</i>			<i>do</i>	<i>11</i>	<i>S 37° W</i>	<i>37</i>
					<i>H-Oak</i>	<i>18</i>	<i>S 11° W</i>	<i>34 1/2</i>
<i>See, Remarks, 230 page,</i>	<i>W</i>	<i>"</i>			<i>Ch Nit</i>			
					<i>Gargin, Surveyor</i>			

Record of Surveys in Shelby County, Indiana.

201

Section *33* Township *11* North, Range *6* East.

Date, Intermediate Corners, &c., &c.	Corners.	Stone, Mark, &c.	Acres.	Hund.	Bearings, Trees, &c.	Diam.	Courses.	Dist.
<p>Apr 29th 1864 - 26 R. S. of Sargis, Surveyor (Sec 34) 26 R. S. of Aoriss, Surveyor 68 1/2 R. E. of 44 1/2 R. S. of above point West & North to beginning Sargis's Survey</p>	L	L-stone			By canon	24	N 36 1/2 E	26
	N	Bowlder of L-stone	3/4		to Nit Beech	20 12	N 83 E N 16 E	43 12
	C	"			to Nit	15	N 78 1/2 W	21
	"	"		19	"			
	"	"		33	"			
<p>These stones perpetuated by me. September 10, 1902 W. H. Isley, S. S. Co.</p>	A	No Mark			Telephone Pole 324 E. of L. & K. Bridge		S. 58 W.	7.
	B	Marked B			Stone		S. 2 1/2 E.	26.
	C				S. W. corner of Brick Sch. House		N. 2 1/2 W. N. 15 1/2 E.	30. 68
	O	Blue Bowlder			No witness available			
	N	Bowlder			White Oak	30	N. 69 W.	7.
<p>57. rods North of</p>	M	marked 5+7 Lime Stone			Hack Berry Elm	8 18	N 56 25 W. S. 88 E.	9. 42.

Over

Record of Surveys in Shelby County, Indiana.

Section 33 Township 11 North, Range 6 East.

Date, Intermediate Corners, &c., &c.	Corners.	Stone, Mark, &c.	Acres.	Hnd.	Bearings, Trees, &c.	Diam.	Courses.	Dist.
<p>On Dec. 1, 1902 Levi Hege, County Surveyor of Bartholomew County, Indiana and the undersigned as County Surveyor of Shelby County, Indiana in the presence and with the consent of Frank Kent, John Totter and Martin Gutsinger made a survey of the South line of Dec. 33, T^p 11, R. 6, E. To mark the line line between Shelby and Bartholomew Counties, Indiana we set</p> <p>71. $\frac{44}{100}$ chains East of Z 33-116 ^{stratified line-} Stone Marked + limestone 6"x6" North 24 $\frac{1}{4}$</p> <p>This stone is 2. $\frac{80}{100}$ chains West of the West side low-water mark of Flatrock River</p> <p>William H. Osley, County Surveyor of Shelby Co., Ind.</p>	Z 33-116	^{stratified line-} Stone Marked +			limestone 6"x6" North 24 $\frac{1}{4}$			
<p>On Dec. 28, 1908, as Deputy of S. P. Harris, County Surveyor I set the following Stone</p> <p>12 chains + 15 links West + 37 $\frac{1}{2}$ links North of</p>	L	Stone-Mark +			Locust Post		37 $\frac{1}{2}$ l. South + 1.31 West.	

Record of Surveys in Shelby County, Indiana.

Section **B 4** Township **11** North, Range **6** East.

Date, Intermediate Corners, &c., &c.	Corners.	Stone, Mark, &c.	Acres.	Hund.	Bearings, Trees, &c.	Diam.	Courses.	Dist.
	V	Stone			Beech	22	S 27° E	39
		"			do	15	N 40° W	88
20 ³⁸ R. N.	of Same	"			No Mark			
	U	"			"			
Same N	of Same	"			"			
Mar 2nd 1838	N	"			Beech	16	N 16° E	30
		"			do	30	N 27° E	26
		"			do	30	N 27° E	22
<p>On Dec. 28. 1908, as Deputy of S. P. Harris, S.S.C. I set the following</p>					Stones.			
37½ links North of	N	Mark +			Stone		South	37½
37½ links North	P	"			Stone		South	37½
<p>I believe I found this stone 12-20-84 on SW side of corner post, 3" below surface, stone appeared to have cut + on top. Was unable to find stone "N", but existing corner post fits well with recorded distance (37½ links). I May Deputy Co. Surveyor</p>					<p style="font-style: italic;">Harris, Surveyor</p>			

Record of Surveys in Shelby County, Indiana.

Section *B3* Township *11* North, Range *6* East.

Date, Intermediate Corners, &c., &c.	Corners.	Stone, Mark, &c.	Acres.	Hund.	Bearings, Trees, &c.	Diam.	Courses.	Dist.
<i>203 & R N</i>	<i>V</i>	<i>Stone</i>			<i>Beech</i>	<i>22</i>	<i>S 27 E</i>	<i>89</i>
					<i>do</i>	<i>15</i>	<i>N 40 W</i>	<i>88</i>
	<i>U</i>	<i>"</i>			<i>do</i>			
<i>Same N</i>	<i>U</i>	<i>"</i>			<i>"</i>			
<i>Eed, Munchel. le Sur</i>	<i>N</i>	<i>"</i>			<i>Beech</i>	<i>16</i>	<i>N 16 E</i>	<i>30</i>
<i>Mar 2nd 1838</i>	<i>N</i>	<i>"</i>			<i>do</i>	<i>30</i>	<i>N 27 E</i>	<i>25</i>
	<i>F</i>	<i>"</i>			<i>do</i>			
	<i>MW</i>	<i>"</i>			<i>"</i>			
<i>Feb 11th 1864</i>	<i>C-H</i>	<i>" 1/2</i>			<i>"</i>			
	<i>A</i>	<i>"</i>			<i>Stone</i>		<i>N 75 1/2 E</i>	<i>29</i>
<i>April 24th 1883</i>	<i>A</i>	<i>"</i>			<i>"</i>		<i>N 77 W</i>	<i>30</i>
	<i>L</i>	<i>"</i>			<i>Sugar</i>	<i>10</i>	<i>N 67 1/2 W</i>	<i>92 1/4</i>
<i>Murphy C. Surveyor</i>	<i>U</i>	<i>"</i>			<i>Beech</i>	<i>12</i>	<i>N 28 1/4 W</i>	<i>125</i>
	<i>U</i>	<i>Limestone</i>			<i>Limestone</i>		<i>West</i>	<i>31</i>
<i>August 20th 1886.</i>	<i>W</i>	<i>Limestone</i>			<i>Limestone</i>		<i>North</i>	<i>35</i>
<i>Wm R. Norris, Deputy County Surveyor.</i>	<i>T</i>	<i>Boulder</i>			<i>Walnut Stump</i>	<i>24</i>	<i>N 75 E</i>	<i>40 1/2</i>
<i>Mar. 31st. 1905</i>								
<i>Established stone 23 rds. 4 1/2 ft. East of</i>	<i>C</i>							
<i>Also one 10 rds south of above.</i>								
<i>James E. Norris, Shelby Co. Surveyor.</i>								

Norris' Surveyor

Section 35 Township 11 North, Range 6 East.

Date, Intermediate Corners, &c., &c.	Corners.	Stone, Mark, &c.	Acres.	Hund.	Bearings, Trees, &c.	Diam.	Courses.	Dist.
<p>May 3rd., 1906. Set stake 1034 ft. w. of mid. n. & s. line of Section at cor. of Bartholomew & Main Streets to show west side of Main street Set stake 1034 ft. w. of mid. n. & s. Section line at cor of Shelby and Main streets to mark west side of Main street. James E. Morris, S.S.</p>								
<p>Mar. 28th., 1906. Set stone 12 chains 46.5 links west of 57 feet west of above I set stone No. 2. 2 chains and 55 1/2 links south of first mentioned stone I set a third stone. 2 chains and 55 1/2 links south of 2nd. stone I set stone No. 4 James E. Morris, S.S. Geo.</p>	C	no witness						
<p>March 6 1911 Geo. E. Altman Co, S.S.</p>	Q S	Boulder no wit " . . .						
<p>Sep. 3 1918 set Geo. E. Altman S.S.</p>	Stone Stone	64r W of X 64r. W of S			wit NE 2 rds NW, 2 rods, wit S 25 ft.			

REMARKS.

It has been my special aim in making my Record to avoid all descriptions that do not directly point out the land and Corners Recorded, and in order to do this in such a manner and in such terms as will enable future Surveyors to fully understand our Record we must describe Corners and not Persons nor Tracts of Land, - The Letters used are, we believe the most simple and Comprehensive of any terms that could be made use of, and it is to be hoped that all Records made in these books, will be carefully made in accordance with the plan of the Record - Yours Truly Chas F. Webster.

Sec. 9) Off of One qt. 100 Acres. S. W. Cor. Stone Nit Ash 10 & 34 E 52 }
 S. E. Corner. Ash 20 & 6 N 14 } Beech 4. & 34 E 47 }
 Beech 20 & 83 N 15 } Margin, Surveyor Apr 23rd 1837 -
 Mar 21st 1848 Sec. 9 - Began at A. Thence S 10 R. - N 16 2 R to the N. Line
 of qt. S 50 62 R - E 81 1 R N 49 38 R - E 81 R to place of beginning
 containing 75 Acres - S. W. Cor Stone - Nit Beech 25 & 81 E 22 1/2)
 S. E. Cor. Stone Elm 3 & 86 N 21. } So 10 & 31 E 26 1/2)
 Beech 4 & 24 N 30 } Rock, Surveyor

REMARKS.

(Sec 7.) Moors, S.W. corner, Stone, Nit Sugar 18' at 37° E 3 1/2' to 10' 888 ft 9 1/2'
 Shubb's N. W. cor. Sugar 18' S 33' N 5' - to 4' - at - 8 1/2'
 West End of Line to 8' - at 30° E 12' - Beech 14' S 45' E 32 1/2'
 Rock Surveyor

(Sec. 17) J. Neagernan.

(Sec 20) Divided the N 1/2 of N. W. cor. and set stones at each end of
 same. Ed. Main chel. Surveyor

REMARKS.

Mr. Thinchel, was in the habit of Correcting (as he termed it) Corners, which, in his judgment were wrong, - This is a bad precedent, for a learned Surveyor to set -

As it is a well known fact, that no two Surveyors can Survey the same piece of land with exactly the same results - This fact, will appear like an odd statement to the inexperienced, as it is generally supposed, that with the compass &c. the Surveyor can hit all the old foot-prints and Ax marks, which were made forty or fifty years before, in what was then a wilderness,

But when we consider the results ^{with} different Chains and Chain-Carriers, will produce, even on the same line ^{of} at the same time, it is no longer a matter of wonder that one Survey does not exactly correspond with another.

(Sec, 32) 40 acres. off of N End N¹/₂ E Wqr, 90 Acres off of N End of E¹/₂ S Wqr & Co - S. E. qrs Stones at all the corners, Jargin, l. S.

Oct 30, 1920 In reconstructing the road running N & S. across the sections corners 20-21 & 28-29 it was necessary to make a deep fill & the stone was removed and placed on top of same with culvert broad walls as witnesses
end of culvert SW 54'9" S. E. 54'11" Geo. E. Oltman Surveyor.

REMARKS.

Corners by John W. Whitlock - Search for stone was made at all corners
if stone wasn't found - either - Monument found before digging & was reset
or - Monument was set from best evidence