



S 2. T 12. R 7 E.

- L. A sand Boulder. marked L 2. No mt.  
M. A long limestone marked M 2. No mt  
N. A pointed limestone marked N 2. —  
Mit Beech 14 N 40° W 14 — Beech 2.4 9 40° E. 44  
V. A Rough Sandstone marked V. 2. —  
Mit Beech 24 N 73° W. 27. —  
W. a Rough Boulder. marked W 2. Witness,  
— Butternut. 16. S. 05 1/2° W 44.  
X. A Flat limestone marked X 2. Mit Butternut 20. E. 27 1/2.  
" Chain carriers, Wm. Jancet. & Jacob Wagner,  
Flag Bearers, Wm. Ford. & R. R. Servant,  
Sept 4th 5th & 6th 1865. John Hoops, Surveyor,  
assisted by Richard Norris.

Recorded on Page 294 Record A-1,  
C. F. Webster

variations of 1860.

294

294 Sec 3. T12 R 7

34-a 1/2 of E. of C. of line - Jan 15-1864 E 13  
Buckeye 12 N 70 E 22 Targin

C.

Beech 24 N 81 W 20 - Beech 8 N 41 E 35 - Boulder

N. A nice smooth Beech 15 inches diameter at the corner  
marked in all four sides by nickel

Aug 4<sup>th</sup> & 5<sup>th</sup> 1864. R. Norris

Surveyed Jan 5<sup>th</sup> 1864

Q Limestone Red Oak 36 E 12. Birch 15 S 26 E 13.

P Limestone Maple 20 S 69 E 61. Maple 20 N 82 E 69. X

D Boulder Birch 24 N 22 W 28. Oak 15 N 42 E 37 1/2.

Wm. H. Miller S. B. County

Recorded on Pages 294 & 296 Record ch. 1.

C. F. Webster

4  
Sec. 4. L12 R7.

296  
Z. Beh. 13 N - 4 -  
P. Am 24 B - - -  
N. Beh. 13 . . . 26 -  
X. Beh. 4 - 128 20 -

Recorded on Page 296. Record Chart.

L. P. Webster

Section 5 Town 12 Range 7

- 47 <sup>3</sup>/<sub>100</sub> Rods west of A a limestone marked 17  
Wit Sycamore 20 S 23 <sup>1</sup>/<sub>2</sub> W 148
- 14 <sup>15</sup>/<sub>100</sub> Rods S 12 <sup>1</sup>/<sub>2</sub> E a limestone marked 14 wit Sycamore 20 76 <sup>1</sup>/<sub>2</sub> W 209
- 18 <sup>3</sup>/<sub>100</sub> Rods East of the above a Limestone marked 18  
Wit sycamore 24 S 14 W 150
- 14 Rods west of A a Limestone marked 14 no Wit available
- 18 <sup>4</sup>/<sub>100</sub> Rods S 19 W of the last named corner Limestone marked 18  
Wit ash 18 South 28 <sup>1</sup>/<sub>2</sub> 101

those corners are at the corners of the city lot

Dune the 3<sup>rd</sup> 1874

Dugan S S C

Sec 5. T 12 R 7

Nichols

- B. Ben. 24 170 E 67 -
- R. Ben. 18 170 W 21 - 206 185 E 17
- V. in Oak 36 N 20 E 104 -

Survey for Bennett & Coalmott a line through  
the center E & W was 4° 7'  
28 R. West of N. Hackberry 16 181 E 64  
March 28. 1850  
J. M. Elliott, Surveyor

Shelbyville Corners.

December 4<sup>th</sup> 1862 J. Morris

II. Hard flinty boulder marked II. 5 and II. 4  
North West corner Fair Ground N 82 E 36  
Variation of Instrument 5°

298  
1296

- N. Spire of Court House N 74° 15' W
- Spire of Presbyterian Church N 51° 16' W - NE corner Seminary N 24° 02' W
- C. Limestone marked C 5 - Locust 12 S 53 <sup>1</sup>/<sub>2</sub> E 172.
- 28 rods West of N a stone in gravel pit - boulder marked with cross on top  
Burr Oak 24 S 44 <sup>3</sup>/<sub>4</sub> E 180 - Variation 3° 36'

Dec. 4<sup>th</sup> 1862. J. Morris assisted by Marshall Elliott.

Recorded on Page 296 and 298 Record No. 1.

C. F. Webster

Section 6 Town 12 Range 7

- 17 <sup>85</sup>/<sub>100</sub> chains west and 10 chains south of Ia astone in place
  - 12.75 chains west of the above astone marked
  - 30 <sup>65</sup>/<sub>100</sub> chains west and 18 chains south of Ia astone
  - 8 chains south of the above a stone
  - 71 <sup>3</sup>/<sub>4</sub> Rods West and 10 <sup>1</sup>/<sub>4</sub> Rods south of Ia astone
  - 40 Rods South of Ia a Stone
  - 32 Rods South of the above a stone
  - 1/2 N to W a Stone
  - 72 Rods South and 71 <sup>3</sup>/<sub>4</sub> Rods West of Ia astone
- Chairmen J. Emrich James Stoyer  
 Plagmen Alfred McGray and John Martin  
 Dec. 1872 Sugar S. S. County

these corners have no witnesses available  
stones marked properly

Sec 6. T 12 R 7

C. Hark. 22 N 65 E 50 - Buckeye 16 S 58 W 27  
N. Ben. 74 N 52 E 17 - So 6 S 68 W 16 1/2

Surveyed for Old Dyas The West half of the South West quarter

N. Ben. 7 S 49 W 25 - So 6 N 72 W 26  
O. Ben. 14 S 13 W 26 - Walnut 48 N 47 W 17 1/2  
P. Ben. 22 S 9 W 21 1/2 - Boulder  
Y. Oak 40 N 56 W 22 - S. Oak 14 S 21 E 17

Aug 27. 1852

J. M. Elliott S. S. C.

Shelbyville Corners.

- A. Limestone marked 6 + 5 - Apple tree 10 S 54 W 128
  - B. Limestone marked B 6 set in West side of gravel pit.
  - C. Stone witnesses - Limestone 50 links West long slender block  
Limestone 50 links South long block large end down
  - Ia. Stone by the Original witness Elm
- Dec. 4<sup>th</sup> 1862. J. Norris assisted by Marshall Elliott

298

Recorded on Page 298 Record Book

C. F. Webster

Dec 7. T 12 R 7

D. S. Am 24 North 24 - to 3 128 C 11  
N. S. Am 30 N 65 W 9 - to 18 East - 10 1/2  
O. R. Oak 30 West 21 - to 48 N 28 W 25  
P. Beh. 8 East 12 - Jan 24 160 W 2  
S. S. Am 15 S 20 W 22 - Elm 20 N 86 C 24  
T. Sugar 11 N 40 C 23 - to 20 S 10 W 30

Surveyed for Jordan & Duvalle W + W Luge  
corners previously established. [Ed. Lin of S.C. Co.]  
Nov 1861  
J. M. Elliott Surveyor

W, Beh 5 N 46 C 7 = Sugar 10 S 45 W 31 = a Stone corner  
L. S. M, Stone corners (No trees)  
V, See Section (18) By Ed. Winchel S.C.  
Sept 14<sup>th</sup> 1869

See  
H Stone corner set from lap corner see 19/12 R. Co.  
I Stone corner no witness available  
Feb 23<sup>rd</sup> 1870. W. H. Miller Surveyor

Recorded on Page 300 Revid of N. S.  
G. P. Webster

Sec 6 T12 R7

Rock  
Surveyed for T. Y. Randall & N. E. J.  
B. to B. 4 N 77 W 13 1/2 - B. to N 52 E 12

Surveyed for Robertson, Bennett & Cornwell 10 1/2  
of N. E. J. set off 22 a of South end, 32 of North end residue  
for J. E. Robertson

B. B. to 4 N 40 W 28 - to 10 N 24 E 27

C. B. to 20 N 45 W 21 - to 20 N 37 W 26

M. B. to 5 S 78 W 11 - Buck. 9 N 62 E 27

N. Stone at corner

N. W. cor Robertson. B. to 12 S 68 E 29 - to 16 S 5 E 17

N. E. " " B. to 10 N 26 W 35 - Ash 6 S 6 E 17

S. W. " " B. to 14 S 87 E 11 - Ash 6 S 13 W 24

S. E. " " Hick. 10 N 28 E 18 - Ash 4 N 7 W 13

April 3. 1851

J. M. Elliott Surveyor. By J. M. Elliott Dep.

Surveyed for Thompson & Davis the S. W. q.  
and divided N. & S.

P. Maple 20 N 60 E 8 - Elm. 10 N 15 E 16

Z. B. to 9 N 36 W 19 - Hick 9 S 13 E 38

X. B. to 16 N 28 W 14 - to 12 S 67 W 34 - Boulder -

Y. B. to 6 S 43 E 12 - to 20 N 83 E 30 - Boulder -

N. & O. Boulder

April 20. 1852

J. M. Elliott Surveyor

Recorded on Pages 300 & 302 Records No. 1.

C. P. Webster,

S & T 12 R 7

24 rods south of C A Limestone marked C 24  
 48 rods south of C A Limestone marked C 48  
 30 rods north of N A Limestone marked N 30  
 Ea. wit burr Oak 3/4 S 22 E 35.  
 24 rods south of Ea.

A. Beech 12 N 9 1/2 E 34 1/4 - Red Oak 20 S 87 E

48 rods south of Ea

A Red Oak 12 S 79 1/2 E 10 - S ash 20 N 35 W 3

Chain carriers Robert Antle Sr. James M Smith  
 Flag bearers F S Robertson and John Antle  
 May 23<sup>rd</sup> 1866 John Hoop & Co

Recorded on Page 302, Record No. 1.  
 C. F. Webster

144 Rods E of X Stone no wit availd  
 July 8<sup>th</sup> 1878 J Egan S S C

Sec 9. T 12 R 7

Survey for Chad Bellin & others Co of Sta & N E of  
 of Slu gl & N line of S:

M. Hick 50 7 3/4 E 25 - Oak 36 N 60 E 13

N. Beech 20 15 3/4 E 27 - Ash 5 N 64 W 9

O. Oak 9 N 67 E 15 - Beech N 61 W 38

S. Beech 16 S 24 W 14 - S 10 N 15 E 19

V. Beech 4 N 10 E 11 - S 10 S 26 E 27

Sept 9. 1850

J. M. Elliott Surveyor

Surveyed for Dan Seaman & others lot of Slu gl &  
 N E of Slu gl

2 Rods S of E. Beech 9 S 51 E 57 - S 7 N 68 E 52

C. Red Oak 24 N 55 E 3 -

H. Beech 16 N 49 E 4 - S ash 24 S 55 W 13

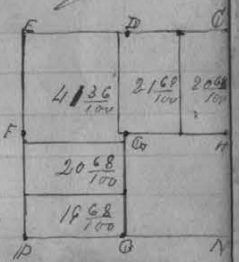
2 Rods west of D. Beech 13 N 13 E 24 -

G. Elm 40 S 61 W 30 - S. Oak 5 N 27 W 3

P. Boulder

Aug 22. 1852

J. M. Elliott Surveyor S. C.



Recorded on Page 304 Record No. 1.  
 C. F. Webster

V a Limestone set by old w S surveys wit  
 and marked V Z A and B  
 U a limestone marked U with stone east 25 links  
 L a limestone marked L + P wit stone east 13 links

Section 9 Town 12 Range 7

B S a Limestone Set By 6 Bearings  
with a Beech 16 S 24 W do 10 N 15 E 18

B a lime Stone marked B  
with a s. ash 10 N 32 W 37 1/2 - ash 10 N 32 W 53

Chaimmen and flagmen Mr Bolby  
Mr Amos and Mr Schenck  
March 22<sup>nd</sup> 1878 } J. Dugan S's County

15  
Sec 10. T12 R 7

Sept 11<sup>th</sup> 1847 } Surveyed for J. M. Newton & others (Book)  
I divided the S E q  
S W cor of Davis Stone. Bch 20 N 25 W 42 1/2 (50 ch)  
do 10 N 72 E 50 "  
S E cor of Akes. Stone. Bch 8 N 40 W 72 1/2  
do 10 N 9 E 63 1/2  
N E cor of Newton. Stone. Bch 25 N 15 W 48 3/4  
do 25 S 44 E 57  
N E cor of 7 small Stone. Bch 22 S 25 W 12 1/2  
do 9 S 45 E 38 1/2  
S E cor of do - Stone placed -  
N W cor of J. P. Davis - Stone placed -

Recorded on Page 304, Record No. 1,  
C. P. Webster

Sec 11. T12 R 7

C. Stone Corner perpetuated Dargin  
 B. D. H. B. Alden 10 W - 7 - Sycamore 5 - 135 E 17  
 X. Beh 12 N 48 E 12 1/2 - Cherry 2 - 135 E 23 3/4 Rock  
 W. Beh 14 N 78 E 45 - Elm 18 - 122 E 52 3/4  
 V. Elm 24 N 18 1/2 E 71 -  
 M. Ash 40 N 57 E 12 - Oak 10 N 11 1/2 W 36 1/2  
 L. Elm 14 N 56 E 7 - Hick. 8 - 144 W 22  
 V. Stone

also shown

July 8<sup>th</sup> N, O, C  
1858,

Stone Corners, Dargin 48

Recorded on Page 306, Record No. 1,  
L. E. Webster

Section 12 T 12 R 7

N Relocated Limestone marked N+12  
with a stone 23 1/2 links - B Gum 225886 88 links  
May 29<sup>th</sup> 1873  
J Sugar S.S. Co

Sec 12, T 12 R 7

Nichols

D. Beh. 14 S 46° 25' - to N 30 W 13  
E. Beh. 8 N 30 W 5 - to H. 20 S 60 W 24  
N. Beh. 20 N 9 E 17 - to 20 S 15 W 33

Surveyed for Jenkins & Woodland & Co, & divided  
N & S

L. Boulder

M. Boulder, Beh 18 S 57 W 22 - to Beh 4 N 84 E 10

X. Boulder, Beh 6 S 2 E 40 - to 7 S 58 E W 54

Feb 13, 1857

J M Elliott Surveyor

326

Divided the south west 1/4 of Sec 12, T 12 R 7 S & S  
O. Stone corner & Stone corner Sp 5, 1839 Ed Finchel S & C

807

1/4 section corner on Range Line a stone Ls

L, W, & N. Stone corners See Dargins notes

1/2 OP and 1/2 Y Zs stones set and marked with 1/2  
4.20 chains West of Y and 4 1/2 rods South of the before men-  
tioned corner, stones set and marked

4 1/2 rods North of 1/2 Y Zs a stone set and marked  
Sec. 22nd & 23rd 1868, B. Morris

Recorded on Page 306 & 308. Record No. 1.

C. B. Webster

Sec 13. T12R7

MA. Beh. 14 214 E 16 - To 8 N 11 E 20

MB. Beh. 18 257 E 20 - To 10 N 42 E 17

WV.

X to M 30a of south end Beh. 14 North 4 - Hick. 9 215 to 14

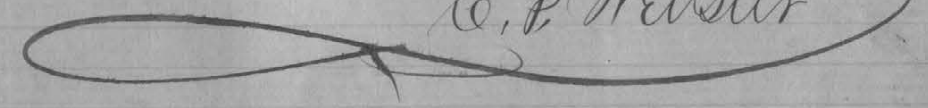
Set off Mrs. Elizabeth Worland's Power  
 60 Rods North and 43 Rods West of O. A Stone corner  
 Thence North  $37\frac{99}{100}$  Rods to a Stone corner  
 Thence East 43 Rods to a Stone corner  
 Thence North  $36\frac{96}{100}$  Rods to a Stone corner in the center of Road  
 Thence S. in E with the direction of the road 16 Rods to a Stone corner  
 Thence South  $63\frac{26}{100}$  Rods to a Stone corner  
 Thence West  $11\frac{98}{100}$  Rods to the place of beginning Containing  
 15 Acres See Commissioners Report

Done by Ed Winchell

$\frac{1}{2}$  LM "  $\frac{1}{2}$  MN " N "  $\frac{1}{2}$  V WV "  $\frac{1}{2}$  VWX  
 stones set and marked with  $\frac{1}{2}$  on each except N.  
 N. a boulder marked N 13.

Dec 27<sup>th</sup> & 28<sup>th</sup> 1863. R. Swiss

Recorded on Page 308, Record No. 1.

C. F. Webster  


14  
Sec 14. T12 R7

Nichols  
W. E. 30 a of S. and Ben 6 N 80 E 3 - to 8 N 40 E 37

Surveyed for Laws & others S. E. & divided  
the same P. & W. on 51

L. Walnut - 36 S 83 W 25 - Ben 12 N 45 W 49 49

M. Ben 10 S 65 W 6 - to 9 N 35 W 40

S. Stone

U. Ben 15 S 53 E 9 - to 8 N 37 W 8

X. Ben 12 N 47 W 25

310.

Jan 17. 1850

J. M. Elliott Surveyor

Recorded on Page 310. Recd of Chas. A.  
C. P. Webster

15  
Sec 15. T 12 R 7

Saysin

Q. Beh 14 N 81 W 5 - S 16 S 21 E 28  
Y. Beh 30 N 42 E 21 - S 10 S 42 W 17  
R. Beh 4 N 35 E 17 - S 6 S 37 E 27

Recorded on Page 310. Recorded to. 1.

C. B. Webster

16  
Sec 16. T12 R 7

June 18<sup>th</sup> 1847  $\frac{3}{4}$  Surveyed for Ino. Freeman

Rock

D. Beh 25 West 23 $\frac{1}{2}$  - To 18 N 89 $\frac{1}{2}$  21 $\frac{1}{2}$

Survey June 27<sup>th</sup> 1867  
P Limestone. Set from an original wit. to wit.  
Beh 6 N 54 W 10. perpetuated for W. Mahan  
R Limestone marked R. 16. no witnesses available  
W. H. Miller S.S.C.

Recorded on Page 310 Record A. 1.

C. F. Webster

It is former Surveyor. Old witnesses still  
standing. N Walnut a little N of North 20 $\frac{1}{2}$   
to S nearly East. about  
the same about. Same.

993 $\frac{1}{2}$  Links South of R. A. Stone marked - 16  
MT a Stone West 31 Links

Chairmen John Smith Jonathan Tennent  
flagman John Post

August 11<sup>th</sup> 1871 J Dugan S.S.C.

Section 16 Town 12 Range 7

99 3/2 Links S of R a stone marked 16 wit a Beech & 3 Trees 29 ash 27  
 49 6 3/4 Links North of R a stone marked 16  
 witness a stone west 30 Links  
 49 6 3/4 Links North of Q a stone marked 7416  
 Wit a Beech 18 S 76 E 20 do 20 S 84 E 69  
 Chairmen Cameron James Samuel Foot  
 Flagman Jonah M Gures  
 August 16<sup>th</sup> 1871 J Dugan S S & C

2.25 Links North V a Limestone marked 9

Wit a Beech 15 N 45 W 1/4 do 15 S 39 W 57 1/2

14 00 Links North of V a Limestone marked 56  
 Wit a Beech 28 N 20 E 22 1/2 - do 18 S 52 1/2 W 24

12.17 Links North of <sup>the</sup> South line of Section 16  
 and 40 Links North 85° East of corner  
 which is in middle of Lewis creek  
 a Limestone marked 1247 no wit available  
 13 00 Links North 85° East a Limestone marked 7  
 of the above described corner  
 a Limestone marked 7 no witness available  
 this survey was to set of 2 acres + 13 Rods  
 of Land from Joseph Wood to Isaiah Wood  
 and the South line Run S 5° E  
 at a Variation of 5° 30'  
 Chairmen Saml Foot + James Reggs  
 Flagmen Edward Woodard + Walter Vanway  
 February 22<sup>nd</sup> 1872 J Dugan S S & C

Sec. 17. T12 R 7

Surveyed for G Stafford & others & line of M. G.

N. Beh. 18 N 49 E 5 - do 10 S 65 W 6

June 20, 1851

J. M. Elliott Sur. By M. Collins Secp.

Node 60 1/2 North of N. Beh. 10 N 10 W 19 + Beh 20 S 10 W 21 - a stone corner  
 Node 60 1/2 North of O. Beh 24 S 25 W 13 - Beh 16 N 45 E 24 = a stone corner  
 O. Poplar 6 S 85 1/2 W 46 = Oak 11 S - W 68 1/2 = a stone corner  
 D. Sugar 7 S 10 W 54 = Beh 10 S 74 E 53 1/2 = a stone - By Elliot  
 P.S.E., see section (18) By Ed. Winchel, M.C.  
 For 530' nearly Sept 14<sup>th</sup> 1859

N Limestone Beh 12 S 8 W 11. Beh 15 S 60 E 9  
 1/2 E U Beh 15 N 64 W 25. Beh 13 S 59 E 15 1/2 Limestone  
 W Beh 12 N 69 W 34. Beh 12 N 47 E 12  
 1/2 of N to S Boulder no witnesses available  
 S Boulder " "  
 747 links East of N Limestone  
 325 " North of last named corner a limestone  
 932 " " " " " "  
 584 " West of " " " " " "  
 322 links north of N a Limestone  
 Aug 30<sup>th</sup> 1867 W. H. Miller Survey  
 JH Limestone Beh 12 N 87 W 199  
 K " Beh 12 N 34 E 13. Beh 10 S 48 E 13 1/2  
 Jan 19<sup>th</sup> 1869 W. H. Miller Survey

Recorded on Page 312 Record Book  
 C. F. Webster.



Secton 19. T12 R7.

- O. A blue boulder marked O 19  
Beech stump 18 N 42 1/2 W 7 found. Elliotts survey.
- II. A long slender limestone about 20 inches long marked II 19.  
Both of Elliotts witnesses found and both blown down
- C. A limestone marked C 19 - field notes Beech 6 N 22 W 3 found  
New witnesses taken, Hickory 10 N 45 E 1/2 - Hickory 16 South 9
- D. Limestone marked D 19. Both of Elliotts witnesses found
- E. A limestone set in East edge of ditch. Hickory 20 N 26 E 3/4  
Feb. 26<sup>th</sup> 1864 - R. Norris County Surveyor
- 59 1/2 rods North of V a broken limestone unmarked  
Ash 10 N 14 W 14 - Hickory 20 E 85 W 32
- 5 1/2 rods North of V - Beech 10 SW 15 - Hickory 20 East 15
- V. Long slender limestone marked V 19
- X. A sandy limestone marked X 19 - Elm 24 N 42 E 9/16 remaining  
Feb. 26<sup>th</sup> 1864 - R. Norris

April 23<sup>rd</sup> 1864

59 1/2 rods north of V stone set and marked + set from  
from Norris's and Elliotts witnesses  
W. H. Miller S. S. C. Ind  
3 chains 2/3 64 links east of M. W. Oak 1888 E 50  
Hick 12 S 44 W 46 - Boulder  
576 links South of T thence east 364 links Stone corner  
Run 15 - N 31 E 1/4, S Ash 3 20 W 33  
19<sup>th</sup> of Aug 1867 - W. H. Miller S. S. C.

Recorded on Page 318 Record No 1  
C. F. Webster

Sect 19. T12 R7

Nickols

- HF. Maple 18 N 60 W 27 - B. Am. 14 N 65 E 17
- C. Elm 22 S 80 W 20 - Beech 36 S 40 E 17
- O. Beech 30 N 25 E 23 - Poplar 10 S 21 W -  
Surveyed for B. F. Mayhew
- Z. Beech 15 S 39 E 20 - S 4 S 81 W 8
- X. Elm 24 N 42 E 9/16 - Ash 6 N 44 W 20
- Z. 19 S 70 E 10 - 24 N 14 W 4
- O. Beech 18 N 42 1/2 W 7 - Sugar 12 N 87 1/2 W 9
- 59 1/2 N of V. Hick. 20 E 15 - Beech 10 S W 15
- 59 1/2 N of V. Ash 12 S 69 1/2 W 9 - Gum 4 N E 4
- 59 1/2 rods North of V. Beech 10 S W 15 - Hickory 20 East 15
- 59 1/2 rods North of V limestone unmarked broken in two  
Ash 10 N 33 W 17 - Hickory 20 West 38. Feb. 24<sup>th</sup> 64. R. Norris  
Surveyed for Mrs. Clafield, N W 1/4 of N 69
- B. Hick 2 S 12 E 26 - Ash 3 N 36 W 12
- HF. Beech 10 N 58 E 11 - S 9 N 78 1/2 E 6 2
- D. Ash 24 S 29 E 9 - S 4 N 35 W 16  
Nov 1851  
J. M. Elliott Surveyor

Recorded on Page 216 & 218. Record No. 1. C. F. Webster  
 Surveying  
 1864

- M, ash 3 S 57 W 5 - Elm 8 S 38 E 7
- N, a stone corner
- O, Beech 10 S 57 W 24 - S 60 W 34
- W, a stone corner
- T, Beech 14 N 7 E 14 = S 14 S 34 W 23 - Beech 14 N 57 1/2 S 7 E 14
- U, Beech 8 S 13 E 9 = S. ash 4 S 40 W 14
- X. A sandy limestone marked X 19. Feb. 24<sup>th</sup> 1864.  
Original witness found count Elm 24 N 42 E 9/16
- V. Long slender limestone marked V 19
- 59 1/2 N of V Ash 10 N 33 W 17 - Hickory 20 West 38  
a limestone unmarked R. Norris



Section L1 T12 R7

25<sup>14</sup>/<sub>100</sub> Rods North of M Stone marked 21  
 Wit Beech 15 N 8<sup>1</sup>/<sub>2</sub> W 5<sup>3</sup>/<sub>4</sub>  
 19<sup>68</sup> chains North of N Stone marked 7 no wit  
 25<sup>14</sup>/<sub>100</sub> Rods North of N Stone marked 21  
 Wit Stone 8 2 6<sup>1</sup>/<sub>2</sub>

April 5<sup>th</sup> 1877

Jerry Tugan S.S.C.

5 <sup>th</sup>	South of D	Linestone	no nit avail
1124	"	"	Boulder no nit avail
1686	"	"	Linestone no nit avail
2248	"	"	" " " "
2962	"	"	" " " "
		"	" " " "

J Sugans Oct 22/77  
 29<sup>62</sup> South of P stone Wit Beech 15 S 77<sup>1</sup>/<sub>2</sub> W 18<sup>1</sup>/<sub>2</sub>

Sec 21. T12 R7

N. Beech 18 S 65<sup>1</sup>/<sub>2</sub> W 8 - 20 24 N 62 E 13 Dargin  
 B. Beech 20 N 45 E 13 - 20 22 S 40 W 20  
 W. Sugar 12 N 46 E 3 - Beech 8 W 10 E 2  
 M. Beech 8 S 80 W 38 - 20 6 S 20 W 34  
 Y, a Stone corner see Dargin's note

N Boulder Red Oak 13 S 54 E 55-  
 P " established from the original witness  
 new witness Beech 12 N 50 E 89  
 W.H. Miller S.S.C. June 8<sup>th</sup> 1867

Recorded on Page 320. Record No. 1.  
 C.F. Webster

Sec 22. T12 R 7.

Margin

- D. Ber 18 S 40 W 17 - S 24 N 40 E 21
- V. Ber 30 N 75 E 9 - P 60 S 70 W 30
- Q. B. Am. A N 61 E 18 - S 12 S 60 E 16

Survey June 26<sup>th</sup> 1867

N A slender limestone marked N. 22.  
no witnesses available.

W. H. Miller S. S. C

Recorded on Page 322 Record No. 1.

C. F. Webster

V a stone marked V + 7  
 N 1/2 B Walnut 14 S 36 E 5 1/2 B Walnut 18 S 55 W 100  
 Chammey, Celestian, Worland & John Gore  
 Flagmen John Lantz & J. H. Worland  
 March 26<sup>th</sup> 1867 Sugar S S County

Section 23 Town 12 R 7

P. a Stone marked P

with a Poplar 36 S 2 1/2 E 3 1/2

O a Stone marked O+23

with a mulberry 10 N 5 1/2 W 3 1/2

Chainman Celestine Worland & John Gore

Flagmen John Laytz W. L. Worland

Indred 26<sup>th</sup> 1871 J. Dugan S S County

Section 23 T12 R 7

W. A stone by Rock from field notes March 25<sup>th</sup> 1862, D. 22

II. White Elm 2 A E 10 - Burr Oak 18 N 5 1/2 W 3 1/2  
Boulder marked II 23

III. a long red boulder marked M 23 on the East side

Beech 12 N 5 7/8 W 80 - Beech 30 N 7 1/2 E 13 1/2

IV. a Boulder marked W 23

Long Boulder for witness S 6 1/2 W 68

56<sup>th</sup> 5 South of M limestone marked 56<sup>th</sup> 5

Gum 12 N 6 3/4 W 64 - Ash 68 S 8 1/2 W 63

56<sup>th</sup> 5 South of II a boulder marked 56<sup>th</sup> 5

Burr Oak 33 S 6 W 45 1/2 - White Elm 36 S 25 1/2 E 6 1/2

May 22<sup>nd</sup> 1867

A stone corner at a point on the west line of the east half of the northeast gr. 40 feet south of the S. F. C. R.R.

A stone corner S 50 E 640 feet also a stone South 50 W 160 feet from the above corner

Recorded Pages 322 @ 323 Record of A. 1.

C. P. Webster

Prescott,

North East Corner of Lot No 1, Limestone set and marked. Also a stone set and marked at the South West Corner of the same Lot.

Sept 3<sup>rd</sup> 1870

C. P. Webster Deputy Surveyor

Sec. 24. T12 R7

Nichols

- D. Dec. 17 N 5 W 2 - 2020 N 25 E 21
- O. Apr 27 East 17 - 2026 N 85 W 38
- N. Dec 12 S 20 E 10 - 209 N 80 E 5
- MI. Dec 30 W - 11 - Hick 12 S 3 E 11 --- Dargun
- B. Dec 30 S 12 W 22 - 2020 N 25 E 21
- Co. Dec 6 S 38 E 11 - Sum 20 N 35 E 11
- HI. Dec 18 S 22 E 12 - 2010 N 5 E 30

3247

May 26th 1870.  
 3 3/4 chains East of N. Boulder  
 Red Oak 20' of 24 N 10 E  
 Burr Oak 16' of 8 1/2 E 91  
 C. F. Webster Deputy Surveyor

Recorded on Page 324 Record Ch. 1.  
 C. F. Webster

# Sec. 25. T12 R7

Nichols

- D. Beh. 16 Ash 35 - So 14 S 22 E 29
- O. Elm 18 S 75 W 22 - Beh. 18 S 55 E 25
- R. N. of D. Beh. 14 S 8 E 40 - Am 10 N 48 1/2 W 21 1/2 **Rock**
- L. Am 11 S 20 E 44 - Elm 36 S 31 1/2 W 22 1/2
- # M. Beh 24 S - 22 1/2 - So 10 N 87 1/2 W 27 1/2
- W. S. Am 22 S 21 1/2 E 50 - W Oak 12 N 43 1/2 W 34

Recorded on Page 324 Record of S.  
 (C. B. Nichols)

see map below 25

O. D. N. H. S. Stone corners  
 R. ash & S 52 E 14 = Beh 8 S 74 E 18  
 R. ash & N 52 E 14 = Beech 8 S 74 E 18 - stone corner  
 15 Acres off of the East side of the NW 1/4 of the SE 1/4  
 North end of line Beech 10 S 9 E W 68 - Oak 50 S 38 1/4 W links  
 South end of line a stone

324

Always marked

one of the S.

- X sand boulder marked X 25 - May 1860, Dick Norris  
 store witnesses set  
 Boulder N 41 1/2 W 36 m Boulder S 56 W 50
- Z. a large boulder marked 25 " 26 " 35 " 36.  
 Boulder South 27 E 30 m Huge Boulder N 40 E 10
- P. Boulder marked P 25 - Limestone witnesses  
 Limestone S 36 1/2 W 53 - Limestone S 34 E 53. 59.
- X O. A large boulder marked O 25 44.  
 Ash 8 S 26 1/2 W 89 - Elm 36 S 53 1/2 W 87
- S. A large flat boulder marked S 25  
 N. B. The respective shares in the Stansifer Estate are all set  
 off by proper metes and bounds and stones set at each corner  
 and marked according to the Report of Partition made  
 at the July Term of the Court of Common Pleas by  
 Richard Norris, Samuel Cahoon and John Mann, Com-  
 missioners.  
 July Term 1863. D. Norris.

Sec 25. T. 12. R. 7

May 25<sup>th</sup> 1870.

B. Chains N. of C. - Stone. Witnesses 534  
Bur Oak 20<sup>in</sup> S. 53<sup>o</sup> N. 66<sup>o</sup> E. Bur Oak 15<sup>in</sup> N 40<sup>o</sup> W.

B. Chains N. of H. - Stone. Witnesses  
Stone, N. 88<sup>o</sup> W. 20<sup>o</sup> E. - To C. 83<sup>o</sup> E. 20<sup>o</sup> E.

C. F. Webster Deputy Surveyor

P. & O. Set by Corniss. Found both of said  
stones out of place. - C. F. Webster Deputy Surveyor

Recorded on Page 326, Record No. 1.

C. F. Webster

A found Right and Perpetuated. Stone  
Set By Lap corner See field notes  
Oct 21<sup>st</sup> 1874 Dugan 536

Sec 26. T. 12. R. 7

B. Chain 8 S 55 W 17 - To 16 S 75 E 31

M. Chain 2 N 10 E 26 - To 14 N 90 E 20

N. Dugan 19 North 8 - Chain 10 S 27 W 7

X, O, C, D, N, H, W & Y. Stone corners

May 25<sup>th</sup> 1870

II Boulder. Witnesses. Stone N 20<sup>o</sup> E 65<sup>o</sup> E.

S. 34<sup>o</sup> E. 45<sup>o</sup> E.

C. F. Webster Deputy Surveyor

Recorded on Page 326, Record No. 1.

C. F. Webster

27  
Sec 27. T 12 R 7

W. Elm 27 N 45 E 21 - Ben. 18 S 30 E 28

See beginning  
of poles 72

B, Ash 10 S 2 W 24 - Ash 8 S 34 W 34 - a stone

V, W, C, L, B, N, Stone corner

M, B Walnut 8 S 42 E 16 - Do 4 S 10 E 41

also 60 acres off the South End of the S E 1/4 Beginning  
at X, thence East 80 1/2 - thence North 119 7/8 - thence West  
80 1/2 thence South 119 7/8 Poles to the place of Beginning

Also 60 <sup>acres</sup> off of the S end of the W 1/2 of S E 1/4  
Beginning at the 1/4 section corner (\*) on S line of section  
thence East 80 1/2 poles, thence N 119 poles 7 links, thence  
West 80 1/2 poles, thence S 119 poles 7 links to the place  
of beginning - containing 60 Acres more or less

Recorded on Page 328. Record A 1.

C. P. Webster.

Sec 28 Town 12 R 7 East

<sup>stone</sup>  
 I. set by original Nit - viz see field notes (59)  
 witnesses (Sugar 12 S 87 N 22, Nit Beech 12 ct 12 1/2  
 Beech 15 S 73 E 62) Buckey's ct 5 N 37  
 Error see Nit

M Stone - Nit Beech 24 ct 22 N 17 -  
 Beech 10 S 36 E 35 -

10.10+ West of I. set Stone.  
 Nit Sugar 12 S 87 N 22 -  
 Beech 15 S 73 E 62 -  
 Sept 1870.

C. F. Webster Supt. Surveyor

Sec 27 - 12 - 7 -

D. Stone - Nit Elm 12 ct 60 E 18 1/2 - Beech 12 ct 33 1/2 N 41 -  
 9.94 Chains South of above stone. (for 20. acres)

Stone - Nit Stone ct 20 L -  
 O. Stone Nit Stone East 20 S. S. S. 15 S.  
 9.94 Chains South of above stone. (for 20. acres)

Stone Nit Stone West 20 S. S. South 20 S -

14.92 Chains South of O. set stone (for 30. acres)

Nit Stone East 16 1/2 S - Beech 14 S 20 E 16 -

14.92 Chains South of N. set stone (for 30 acres)

25 Lmb Nest at Center of Road.

Nit Stone East 47 S. On opposite side of Road.

9.94 Chains South of C. set stone (for 20. acres)

Marked 20, and sets 25 S Nest at true corner.

Nit Stone East 50 S On opposite of the Road -

9.94 Chains South of H. set stone (for 20. acres)

Nit Beech - At 11 N 8 S - Stone East 20 S

9.94 Chains South of P. Stone (for 20 acre)

Nit Stone North 19 S - S. East 18 1/2 S

S. Stone East of true corner 25 S. Nit Stone West 44 1/2 S.  
 Sept. 1870 - C. F. Webster Surveyor

Sec. 28. T12 R 7

Rock.

- D. Beh 20 N 10 E 35 - S 18 W - 25
- C. R. Bud 3 N 74 W 29 - W 3 on 6 S 86 W 26
- M. Beh 20 S 55 E 3 - S 15 N 5 W 17
- N. W. Beh. 3 N 40 E 8 - S. Am 4 W - 15
- O. Beh 20 N 40 E 21 - Sugar 20 N 75 E 17
- L. Beh 18 N 17 E 8 - S 21 S 24 W 29
- T. Beh 12 S 60 W 38 + Sugar 2 S 12 W 22
- P. Stone at half of H. S.
- Q. Stone at half of P. S.

Sep.

Surveyed for Amos & Greene N by N E  
 left off one third at the South side for A. B. B.  
 Bone dug at the corner

April 23. 1852

J. B. Elliott Surveyor

N. W. Stone corner see previous notes

Recorded on Page 330. Record A. 1.

C. F. Webster

Var At 86° - 20'. E & N 3°  
 T. Stone Nit Stone North (by Little tree) 15 E 34 S  
 Nit Stone N 15 E 34 S

Sept 1870.

C. F. Webster Supt. Surveyor

T 20 Rods North of K stone marked 20 - wit cherry 5 S 84 1/2 N 21  
 perpetuated

wit ash 4 N 37 W 15 - do 6 N 77 W 24  
 20 Rods North of T. 2 stones Both flat - No wit available  
 Chairman John main call Terose flagmen J Jones + Wm Main  
 May 11/1873 J Dugan 5' 16

# Section 29, T12, R7

60 Acres off of the West side of the E/2 of the NE 1/4 (Dargin 22)  
 SW corner a stone — NW corner a stone

Recorded on Page 330, Rev. of M. 1.  
 C. F. Webster

# Sec 29, T12, R7

B. o. c. h.

H. Gum 30. South 1 — Ber. 12 North 11  
 M. Ber. 20 N 73 1/2 E 20 — to 10 S 53 1/2 W 23  
 W. Am 6 South 1 — to 5 S 60 E 14  
 B. Ber. 20 East 6 1/2 — to 20 N 56 W 25  
 N. B. Am 12 N 59 1/2 E 26 — to 18 N 28 W 24  
 T. Hickory 20 South 4 — Oak 4 N 76 E 18

Surveyed for Lumpus & Springer South line

S. W. q. 1  
 Z. Oak 6 S 25 E 54 — Ash 14 N 45 E 70 — Boulder

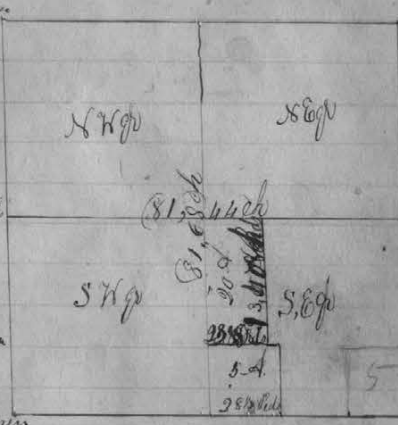
Sept. 15, 1852

John Clinton Surveyor

Surveyed for Wm Simpson & Johnson  
 S. 1/2 of Sec 29 and cut off 6 acres in the form  
 of a square commencing at S 1/2 corner of S 1/4  
 (also 20 acres in the form of a rectangle  
 commencing at N 1/2 corner of S 1/4 q. 1  
 N. Ash 14 N 70 W 67 — R. Oak 57 N 67. Corner stone  
 and stone marked with N

Sworn, Chainman & flagman

Wm Simpson, flagman  
 Cameron Simpson &  
 Nelson Johnson, Chainman



8 rods 11 links North of T a stone corner marked 72 rods 7 1/2 links.  
 6 acres and 6 square rods surveyed for Wm Simpson lying East of the  
 aforesaid rectangle of 20 acres commencing at the NE corner of the same  
 in the form of a rectangle 80 1/2 rods N and S and 12 rods E and W  
 three stone corners established, viz. NE corner marked 12; SW  
 corner marked 80 1/2; SE corner marked 12.

8 rods and 5 links North of the SE corner of the above described tract  
 a stone corner marked 72 rods 7 1/2 links in Division Line.

Recorded on page 330 of M. 1. C. F. Webster

12 rods East of the SE corner of the 20 Acre Rectangle a corner established stone set and marked "5376"

Witnesses, Beech 12 North 70° E 27 — White Elm 13 N 51° W 34 links.

March 2<sup>nd</sup> and 4<sup>th</sup> 1861

Sick Norris, C, D, S, Co.

Recorded on Record No. 1, Page 331

C. F. Webster

426  
339  
815

# Sec 30. T12 R7

Sargin

W. Beh 18 N 52 W 23 — S 10 N 62 E 57

W. Elm 24 S 26 W 10 — Beh 2 N 40 E 21

N. W. Oak 24 S 68 W 4 — S. Wood 4 N 48 E 11

W. Beh 14 E — 10 — S. Wood 4 N 7 E 8

M. Beh 14 N 7 E 8 — S 18 S 62 E 15

I. Beh 22 N 16 E 15 — S 10 N 67 W 23

H. Beh 10 N 18 W 16 — S 12 S 44 E 33

W & X, Stone corners

Y, S. Oak 14 S 21 E 29 — Beech 12 North 32

To, by Stone corner = also other stones at corners of sections cut off

Surveyed for McKinney a line P to N

Also part of lot of Stage "See Plat"

See 10. 1850

J. M. Collins Surveyor

M, Ash 4 S 31 E 13 — Beh 10 S 5 W 22

N, a Stone corner

W end of line dividing N E 1/4 of S E 1/4 a stone

Sargin 32

S end of same line a stone

Also 17 Acres off of the SE corner of E 1/2 of S E 1/4

W corner a stone — W corner a stone

Recorded on Page 332, Record No. 1.

C. F. Webster

20 1/2 Chains North of Z a stone marked 7+13

Wit a stone N 17 E 60

4 1/2 Chains East of the above stone marked 7, 16 no wit

8 1/2 Chains North of Z a stone marked 7 wit a stone E. 40

Chamcarriers S's Woodruff, J. Taylor Placers J. Stevens +

D A Andrews

J. Hagan S's County

Sept. 17/1872

Section 31 Town 12 Range 7

- 1 A, A Stone corner from Elliotts Record
- C. A Stone corner Perpetuated
- . D. A Stone corner Established
- E. A Stone corner Perpetuated = Hick 18 S 18 W 66 = Do 16 S 28 E 4
- H. A Stone corner Established
- K. A Stone corner Established
- L. A Stone corner Perpetuated
- M. A Stone corner Established = Beh 8 S 26 W 21 = Mul 6 S 43 E 4
- N. A Stone corner Established = Ash 5 S 77 E 25 = Do 5 S 41 E 1
- O. A Stone corner Established = Beh 16 S 87 W 46 = Elm 36 S 53 W 31
- P. A Stone corner Established = Beh 8 S 38 E 11 = Gum 9 S 19 E 4
- R. A Stone corner Established
- S. A Stone corner Established
- T. A Stone corner Established = S. Ash 12 W 16 = Beh 10 S 80 E 2
- 1 U. A Stone corner Established
- 1 V. A Stone corner Established
- W. A Stone corner Established
- X. A Stone corner Established = Walnut 8 S 71 E 71 = Ash 10 S 39 E 14 S 4
- Y. A Stone corner = Oak 30 S 26 E 97 W = Beh 12 S 66 E 85
- Z. A Stone corner Perpetuated

June 1860 by Ed Winchel S.S.

Recorded on Page <sup>334</sup> 336 Record No. 1.  
C. F. Webster

Sec 31. T 12 R 7

H. Beh 18 N - 31 - S 20 S 60 W 28 E  
L. Hick 9 S 8 W 18 - Maple 22 N - 11

- V. A Stone corner
- N. S. Ash 5 South 3 East 10 = Oak 6 S 67 E 16 = Stone corner
- S. B. Walnut 7 S 60 E 55 = Oak 7 S 36 E 138 = Stone corner
- O. Beh 18 N 49 = Elm 30 S 53 W 74 = Stone corner
- Y. P. Oak 26 S 24 E 93 = Beh 12 S 66 W 93 = Stone corner
- W. A Stone corner
- S. a Stone corner
- R. a Stone corner

Done by Ed. Winchel S.S. August 27, 1859

W. Hickory 18 S 18 W 66 = Do 16 S 28 E 4 = Perpetuated = Stone corner  
P. Beh 8 S 38 E 11 = Sweet Gum 9 S 19 E 4 = Perpetuated = Stone corner  
Sept 23<sup>rd</sup> 1859 = by Ed Winchel S.S.

Recorded on Page 334 Record No. 1.  
C. F. Webster

Section 32 T12 R1

February 1<sup>st</sup> 1862. Morris

- V. A boulder marked V 32 on the North side.  
Ash 8 N 12 E 12 1/2 - Beecher 40 N 32 E 12 1/2
  - WW. A limestone marked W 32 on the North side  
Witness Stone N 15 W 35 - Witness Stone N 36 E 37
  - X. A limestone marked X 32 on the North side  
White Elm 30 N 25 1/2 E 50 - Beech 24 N 34 1/2 E 13 1/2  
Northeast corner of Henry Tomastott House N 7 1/2 W 21
  - 16 rods East of X a limestone marked 16 on the North side  
Ash 27 N 53 E 60 1/2 - Beech 20 N 39 1/2 W 6 1/2
  - S. A limestone marked S 32 on the South side  
Sugar Tree 26 S 17 1/2 E 56 1/2 - Beech 15 S 7 E 116
  - 50 rods North of W a limestone marked 50  
Witness Stone N 76 W 15 - Witness Stone S 14 E 18 1/2
  - 50 rods North of X thence 16 rods East a limestone marked 16 on branch  
Beech 6 N 59 W 10 1/2 - Sugar 24 S 19 E 16.
- N.B. The said corner V is established from an old beech tree which is dead but still retains the old notch very plainly Beech 14 N 15 W 12 see field notes and corner X is established from the roots of an old witness namely Beech 15 N 78 W 18 see field notes.

March 1862 J. Morris

- 64 rods West of WW a limestone marked 64 or 16  
Beech 20 N 48 W 79 - Ash 27 N 10 E 57
- 50 rods North of WW a limestone marked 50  
Witness Stone N 85 W 20 - Witness Stone N 71 E 4 1/2
- 64 rods West of the last corner above mentioned a limestone marked 16  
Beech 6 N 48 1/2 W 30 - Sugar 16 N 26 1/2 E 20

Corrected  
Corners

338.  
Recorded on Page 336, Record No. 1,  
C. F. Webster

Sec 32 T12 R1

Nickols

- N. Beech 24 N 78 E 16 - Sugar 4 N 8 E 32 1/2 -
- Q. Beech 17 S 15 E 21 - Sugar 4 N 43 W 20 -
- R. Log wood 2 N 75 E 31 - Beech 15 N 82 W 33 -

Sept 11<sup>th</sup> 1845. Surveyed for J. Law & others, Rocky

- L. Oak N 34 E 15 - Sugar - west -
- P. Hack 18 N 15 W 12 - Sugar 10 S 20 W 30
- C. B. Oak 60 S 8 E 23 - Beech 10 N 13 W 31
- N. End of Living Ash 8 N 45 E 15 - Maple 6 W - 20
- S. " " Mulberry 6 N 68 E 8 - Ash 10 S 53 E 15
- N. E. cor of a house 13 C. Oak N 74 W 31 - Oak 36 N 38 E 58

Bar

Survey for H Drake a Merit site, see former record,  
Bar. N 85 E 18 1/2 E 4 W 6 1/2 Other lines I found to be 7°  
Q. Beech 18 S 16 1/2 W 14 - Boulder  
58 1/2 N. East of Q. Ash 6 East - 29 1/2 - Box Elder 8 N 11 W 30 1/2  
43 N. S. of Q. Beech 16 S 26 1/2 E 64 - Sugar 20 S 32 W 71

Sept 11. 1850

J. M. Elliott Surveyor

Recorded on Page 336, Record No. 1,  
C. F. Webster

Sec 33. T12R7

N. Birch 24 West 11 - To 12 East 15 - Nichols  
 O. W. Birch 3 N E 5 - 3<sup>rd</sup> Oak 18 S W 14  
 M. Birch 10 N 40 W 23 - To 10 N 65 E 34  
 W. Birch 18 S 6 E 6 - S. Wood 3 S 55 W 16  
 D. Walnut 14 S 18 E 29 - Oak 14 S 27 W 21 - - - Rock  
 Y. - - - - - } comes perpetual

States

E. D. B. L. P. Stone corner  
 AX. Hick 5 N 4 W 17 - Elm 3 E 34 - Elm 10 N 36 E 34

Recorded on Page 338, Record No. 1,  
 C. F. Heister

Estate of Jas Young -  
 13 30 Chains S of A. Stone - Wit. W. Bell ch 100 ft 3/4 ft 5/8 ft  
 10. 10 + Chains West of last named corner  
 dit Stone Wit Stone West 12 1/2 ft -  
 13 30 Chains South of B. Stone, Wit Stone S 21 ft  
 Sept 13<sup>th</sup> 1870 -  
 C. F. Heister Deputy Surveyor

Sec 34. T 12 R 7

- III. Dec. 10 N 8 W 19 - So 4 S 25
- IV. Dec. 12 West 11 - So 12 N 60 E 31
- V. Dec. 10 N 82 W 17 - So 12 N 20 W 14
- VI. Elm. 16 S 5 W 6 - S. Am. 15 N 10 W 15

Surveyed for Boyle & Menove S 1/2 into half sec

- I. Dec 3 N 29 E 19 - So 20 S 84 W 31
- II. Dec 12 S 85 W 21 - Elm. 4 S 67 E 14 - Boulder
- III. Dec 12 N 3 E 82 - Hick. 20 N 28 W 78
- IV. Dec 9 N 3 1/2 W 71 - So 18 N 25 1/2 E 79 - Stone
- V. Dec 24 S 20 W 61 - So 20 S 4 E 76
- VI. S. Am. 14 S 27 1/2 E 77 - Hick. 4 S 25 W 66

Oct 31. 1857

J. M. Elliott. Surveyor

Recorded on Page 340. Record No. 1.  
 C. F. Webster.

31

+

Sec 35. T12 R7

Dargin

M. Stone

W. Hickory 6 N17W40 - H. Beam 4 N16W38

B. Beh 7 N87W16 - Dam 14 E - 31

D. Belco 8 - 48 - So 24 N70W27

O. Ben 6 N50E20 - So 12 N48E13

N. Hill 10 N20W20 - So 16 N38E14

VI. a Stone corner

Z. a Stone corner

Dargin's  
data

3X0

Surveyed for Evans, Reese & others

O. Boulder V. Lime Stone

Y. C. 600. Beh 8 N55W16 - So 10 N20E13

Z. C. P. So. Beh 16 N22W16 - Dam 6 N27E22 Lime Stone

Oct 31. 1851

J. M. Elliott Surveyor

N a boulder set by Dargin's witnesses

C a boulder no witnesses available

Surveyed May 24<sup>th</sup> 1867. W. H. Miller Sur.

3X2.

Recorded on Page 322. Record of A. S.

W. B. Webster

Sec 36. T 12 R 7

- M. Hickory 13 S 33 E 29 - So 7 N 27 W 20
- N. Beech 14 N 43 E 20 - So 12 S 45 E 25
- W. Elm 14 N 70 W 19 - Beech 19 N 46 E 45
- B. S. Ash 18 N 80 W 10 - Hick 15 N 70 E 23
- N. Ash 5 N 20 W 20 - So 6 S 20 W 6
- S. R. Oak 40 N 30 E 24 - Hick 12 S 25 W 21
- Q. S. Gum 10 South 14 - B. Oak 30 North 28
- U. Box 10 N 65 E 19 - So 9 S W 21

Recorded on Page 342, Record No. 1.

C. P. Webster

