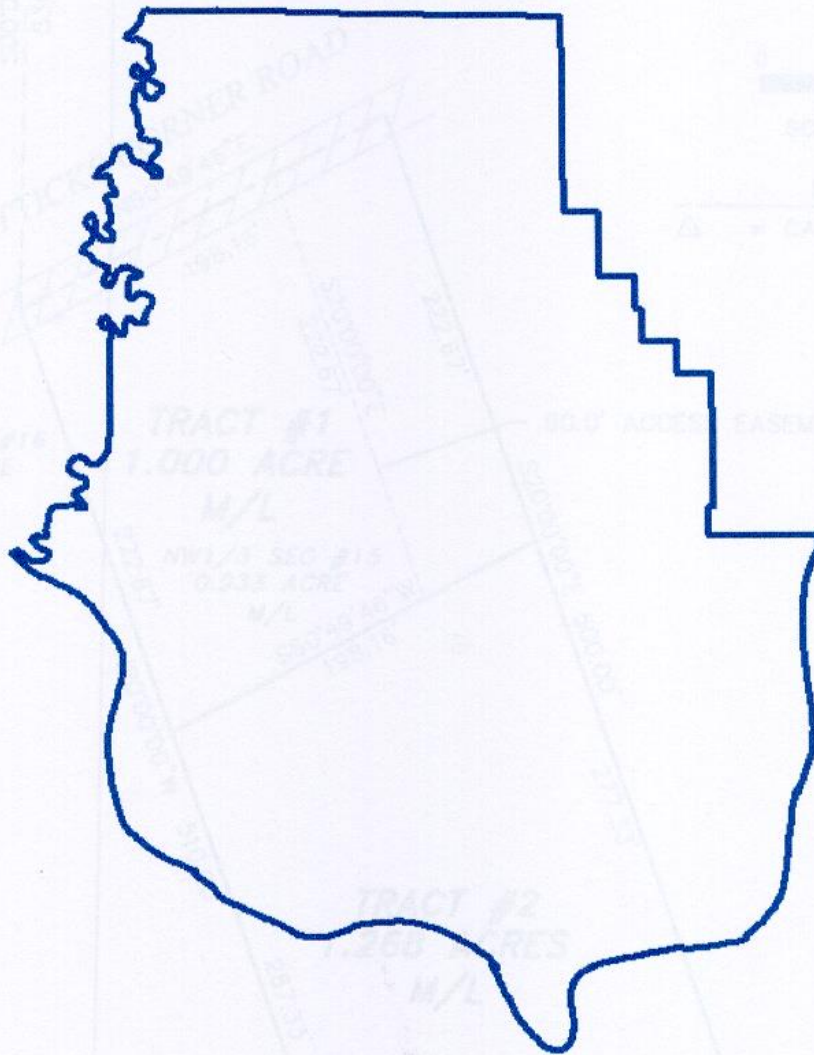


Harrison County, Indiana Zoning Ordinance as amended



Adopted June 3, 1974
reformatted April 6, 2009

Adminiistered and updated
by

Harrison County Advisory Plan Commission
124 S. Mulberry St, Corydon Indiana 47112
(812) 738-8927

TABLE OF CONTENTS

	PAGE	10/16/14
ARTICLE 1 - GENERAL PROVISIONS		
100.00 Short Title	1	
101.00 Interpretation	1	
102.00 Conflict	1	
103.00 Identification	1	
104.00 Zone Map	1	
ARTICLE 2 - DEFINITIONS	3	
200.00 Legal Definitions	3	
ARTICLE 3 - DISTRICTS	12	
300.00 Districts, Establishment	12	
301.00 Boundaries of Districts	12	
302.00 Use	14	
303.00 Height	14	
304.00 Yard, Lot Area, and Size of Building	14	
305.00 Lots	14	
306.00 Vehicle Parking Space-Loading and Unloading Berths	14	
ARTICLE 4 - AUTHORIZED USES AND REQUIREMENTS	15	
400.00 Authorized Uses	15	
401.00 Residential Uses and Requirements	15	
402.00 Commercial Uses and Requirements	15	
403.00 Industrial Uses and Requirements	15	
404.00 Provisions and Exceptions to Table 1	22	
405.00 Sexually Oriented Business	23	
406.00 Sign Requirements	25	
ARTICLE 5 - SPECIAL EXCEPTIONS AND USES AND PROCEDURE AND REQUIREMENTS	31	
500.00 Uses Permitted	31	
501.00 Procedure	31	
502.00 Standards for Review	31	
503.00 Site Plans	32	
504.00 Time limits; Violations;	32	
505.00 Discontinuance of Approved Use	32	
506.00 Notice of Conditional Use	32	
507.00 Reconsideration of application	32	
ARTICLE 6 - PLANNED UNIT DEVELOPMENT	33	
600.00 Purpose	33	
601.00 Preliminary Development Plan	33	
602.00 Procedures	33	
603.00 Secondary Review	35	
604.00 Modifications/Amendments	36	
605.00 Limitations on PUD Districts	36	
606.00 Issuance of Improvement Location Permit	37	

TABLE OF CONTENTS (Continued) (10/16/14)

	PAGE
ARTICLE 6.5- PLANNED EMPLOYMENT CENTER DISTRICT	38
650.00 Intent of Planned Employment Center District	38
651.00 Permitted Uses, Special Exceptions, and Exemptions	38
652.00 Property Development Regulations	39
653.00 Conversion or expansion of preexisting structures and/or uses	42
654.00 Development Plan	43
655.00 Subdivision of Tracts	43
ARTICLE 7 - NONCONFORMING USE, SPECIFICATIONS	44
ARTICLE 8 - ADMINISTRATION	44
800.00 Administration	44
801.00 Improvement Location Permits	44
802.00 Certificate of Occupancy	46
803.00 Board of Zoning Appeals	46
804.00 Amendments	47
805.00 Filing Fees	48
806.00 Remedies	48
807.00 Invalidity of Portions	51
808.00 Repealer	51
ARTICLE 9- ORDINANCE FOR FLOOD HAZARD AREAS	52
100.00 Statutory Authorization	52
200.00 Definitions	53
300.00 General Provisions	60
400.00 Administration	62
500.00 Provisions for Flood Hazard Reduction	64
600.00 Variance Procedures	70
700.00 Severability	73
800.00 Effective Date	73
ARTICLE 10- MANUFACTURED HOME ORDINANCE	73
1000.00 Purpose and General Provisions	73
1001.00 Definitions	73
1002.00 Temporary Use, Circumstances for Permit issuance	75
1003.00 Standards for Manufactured Homes	76
1004.00 Mobile Home Parks	76
1005.00 Remedy	77
1006.00 Validity, Adoption and Repeal	77
TABLES	
Table 1a Permitted and Special Exception Uses	79
Table 1b Dimensional Standards	97
Table 1c Parking Requirements	99
Table 1d Commercial and Industrial Loading Requirements	101
Table 2 Sign Regulations	102