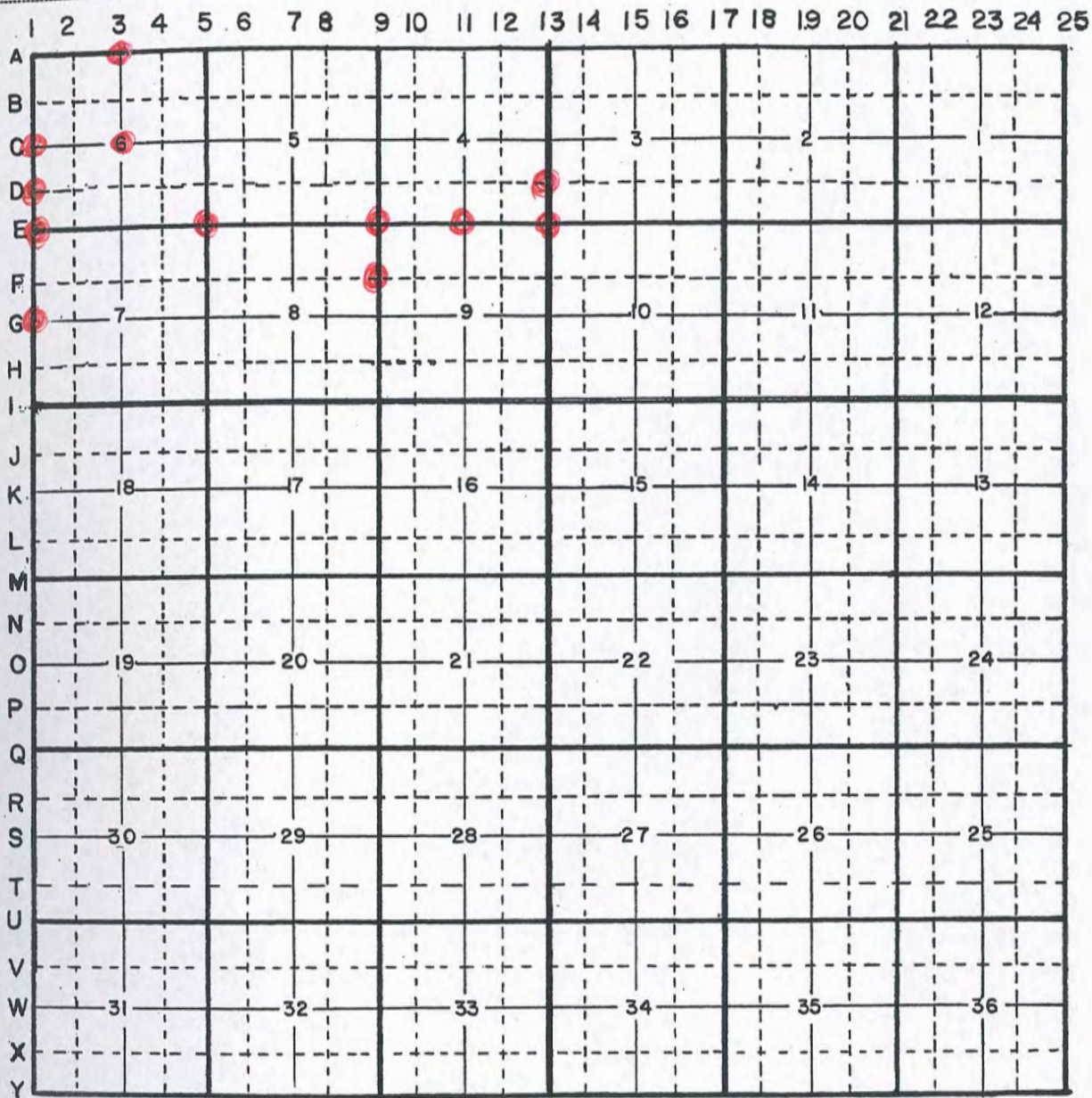


HARRISON COUNTY CORNER REFERENCE

TOWNSHIP 6 SOUTH RANGE 5 EAST



CORNER RECORD

HARRISON COUNTY

CORNER 1-C TOWNSHIP 6 SOUTH RANGE 5 EAST 2 ND PRINCIPAL MERIDIAN

DE

1-C

| LOCATION | DESCRIPTION OF | | DISTANCE FROM CORNER | BEARING FROM CORNER | DATE CHECKED | CHECKED BY | FIELD BOOK | REMARKS |
|-----------------------------------|----------------|-----------|----------------------|---------------------|--------------|------------|------------|-------------|
| | MONUMENT | REFERENCE | | | | | | |
| N.W. 1/4 S.W. Corner Section 6 | | 16" Maple | 27.35 | N44-37W | 4-22-81 | T.B. | #1 Pg. 18 | Sign Placed |
| | | 12" Maple | 16.10 | S51-57W | 4-22-81 | T.B. | | Sign Placed |
| | | Tree | 28.83 | S42-38E | 4-22-81 | T.B. | | Sign Placed |

Party Chief T. Brown

Head Chain C. Mathes

Rear Chain S. Hughes

Date 4-21-81

16" dia maple

27.35

NW 1/4, SW Cor.

T6S, R5E, Sect 6

137-59-40

16.10

1.0' dia maple

54-33.50

Stone is marked with a metal post & sign
 All trees have blaze marks, all marks
 have alum. nail in middle. Trees are
 painted red & nail in blaze. Trees
 have witness signs.

Stone (.50' X .50' X .20' H) Stone has X

319-58-30

28.83

N 2-36 26 W

I-C

LAND CORNER RECORD
(RECTANGULAR SURVEYS)

1-C

Index No. C-1

T 6 S R 5 E County Harrison State Indiana

West Quarter Corner to Section 6

EXISTING SURVEYS

| Subsequent Corner Restoration | Evidence of Subsequent Corner Restoration Found |
|--|--|
| Year surveyed _____ By _____ Where filed or recorded <u>Survey Book 2, Page 7</u> Monument _____ <small>(Original, concrete post, iron rod, etc...)</small> | Year of search <u>2011</u> By <u>VHM, RCW, MAK</u> <u>Recovered limestone, 0.5' by 0.5', projecting 1.0', leaning to the South with a faint "+" cut on top.</u> |
| Bearing Trees, Reference Objects Species _____ Diameter _____ Bearing _____ Distance _____ | |



| | | | | | | | | | | | | | | |
|---|----|----|----|----|----|----|----|----|----|----|----|----|----|----|
| | 2 | 3 | 4 | 5 | 6 | 8 | 10 | 12 | 14 | 16 | 18 | 20 | 22 | 24 |
| A | 1 | 2 | 3 | 4 | 5 | 6 | 7 | 8 | 9 | 10 | 11 | 12 | 13 | 14 |
| B | 6 | 5 | 4 | 3 | 2 | 1 | | | | | | | | |
| C | | | | | | | | | | | | | | |
| D | | | | | | | | | | | | | | |
| E | | | | | | | | | | | | | | |
| F | | | | | | | | | | | | | | |
| G | 7 | 8 | 9 | 10 | 11 | 12 | | | | | | | | |
| H | | | | | | | | | | | | | | |
| I | | | | | | | | | | | | | | |
| J | | | | | | | | | | | | | | |
| K | 18 | 17 | 16 | 15 | 14 | 13 | | | | | | | | |
| L | | | | | | | | | | | | | | |
| M | | | | | | | | | | | | | | |
| N | 19 | 20 | 21 | 22 | 23 | 24 | | | | | | | | |
| O | | | | | | | | | | | | | | |
| P | | | | | | | | | | | | | | |
| Q | | | | | | | | | | | | | | |
| R | | | | | | | | | | | | | | |
| S | 30 | 29 | 28 | 27 | 26 | 25 | | | | | | | | |
| T | | | | | | | | | | | | | | |
| U | | | | | | | | | | | | | | |
| V | | | | | | | | | | | | | | |
| W | | | | | | | | | | | | | | |
| X | 31 | 32 | 33 | 34 | 35 | 36 | | | | | | | | |
| Y | | | | | | | | | | | | | | |

Other Evidence

Describe evidence of use and occupation such as roads, fences, clearings, timber cutting lines, plantations, etc... Cite source of testimony, if any. Stone is situated 12± feet South of East-West woods trail, 100± feet North of fallow field, steel post and yellow Harrison County Surveyor's sign at Southwest corner.

Perpetuation Record

Monument and accessories established. Include brief description of area. Stone left as recovered.

| Sugar | Sugar | Sugar |
|------------|------------|-------------|
| 15" | 16" | 18" |
| N 43° E | S 40° E | S 52° W |
| 29.28' | 30.57' | 15.68' |
| MN + 1.0' | MN + 1.0' | MN + 2.5' |
| On SW side | On SW side | On N side |
| W/Ex. HCSS | W/Ex. HCSS | Placed HCSS |

Northing: 1008457.3
 Easting: 228791.3

RECORDED IN PERPETUATION RECORDS BOOK:
 BY: Heather K. Hunter Date: 8-22-11

5. Signature Vick H.M.
Aug. 08, 2011

LAND CORNER RECORD
(RECTANGULAR SURVEYS)

1-D

Harrison County Surveyor's Reference Index Number: D-1

T 6 S R 5 E 2nd Mer., County Harrison State Indiana

South 1/16 in West Line of Section 6

EXISTING SURVEYS

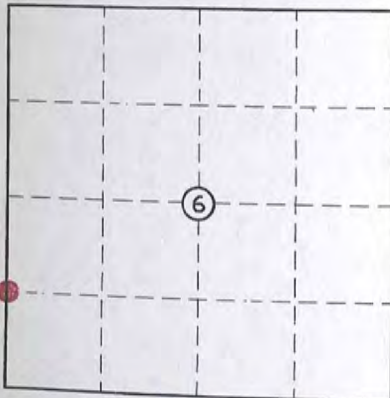


No Original Government Survey Evidence Recovered

Evidence of Subsequent Corner Restoration Found

See surveys in the Harrison County Surveyor's office.

Year of search 2016 By VHM
None



Perpetuation Record

Monument and accessories established. Include brief description of area. Set #5 x 30" steel pin with 3/4" aluminum disc stamped to depict the corner position midway between Quarter Corner stone to North and calculated Section Corner to the South. Monument is 17' West of benched woods road and 85'± East of Mosquito Road. Set rectangular Harrison County Surveyor's sign 0.5' East. Corner accessories established:

- Sugar, 12", N 5° W, 12.0', MN + 0.8' on East side.
- Sugar 5", S 82° W, 15.3', MN + 4' on North side.
- Sycamore 4", S 74° E, 141', MN + 0.5' on North side.
- Placed a cairn.

Signature Vit H. M.

Resource Grade
N: 1007144.8
E: 228821.8

Date: 06/23/2016

Howdy Kristina June 27, 2016

LAND CORNER RECORD
(RECTANGULAR SURVEYS)

Harrison County Surveyor's Reference Index Number: E-1

T 6 S R 5 E 2nd Mer., County Harrison State Indiana

West Section Corner to Sections 6 and 7

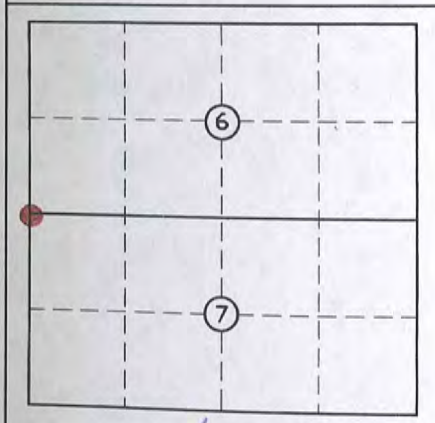
1-E

EXISTING SURVEYS



| | |
|--|---|
| No Original Government Survey Evidence Recovered | Evidence of Subsequent Corner Restoration Found |
|--|---|

| | |
|--|--|
| See August 2011 Harrison County Perpetuation Project in the Harrison County Surveyor's office. | Year of search <u>2016</u> By <u>VHM</u> None |
|--|--|



Perpetuation Record
 Monument and accessories established. Include brief description of area. Restored witness monument 31.27' West of inaccessible corner. Set #5 x 30" with 3/4" aluminum disc stamped to depict the corner position, 0.5' deep, 1' E of East edge of Mosquito Creek Road and 1' West of face of steel guard rail. 450'± North of "Y" intersection of Mosquito Creek Road and Evans Knob Road at creek crossing. Corner accessories established:
Utility Pole with triangle Harrison County Surveyor's sign, N 9° E, 53.33' to bottom sign nail.
Utility Pole, S 14° E, 26.63', MN + 5' on West side.
Utility Pole with triangle Harrison County Surveyor's sign, S 36° W, 42.27' MN + 3' on Northwest side.
Rectangular Harrison County Surveyor's sign, East, 1.7'.

Signature Vit M...
 Date: 06/23/2016

Resource Grade
 N: 1005832.3
 E: 228852.3
David K. Christian June 27 2016

CORNER RECORD

HARRISON COUNTY

CORNER 3-A TOWNSHIP 6 SOUTH RANGE 5 EAST 2 ND PRINCIPAL MERIDIAN

3-A

| LOCATION | DESCRIPTION OF MONUMENT | | DISTANCE FROM CORNER | BEARING FROM CORNER | DATE CHECKED | CHECKED BY | FIELD BOOK | REMARKS |
|---------------------------------|-------------------------|-----------------|----------------------|---------------------|--------------|------------|------------|-------------|
| | MONUMENT | REFERENCE | | | | | | |
| N.W. 1/4 N.E. Cor. Section 6 | Stone | 16" Maple | 5.70 | N16-2W | 4-22-81 | T.B. | #1Pg.19 | Sign Placed |
| | | 21" Pin Oak | 11.0 | N60-2 W | 4-22-81 | T.B. | | Sign Placed |
| | | 14" Cotton Wood | 10.72 | S83-42E | 4-22-81 | T.B. | | Sign Placed |

3-A

3-19

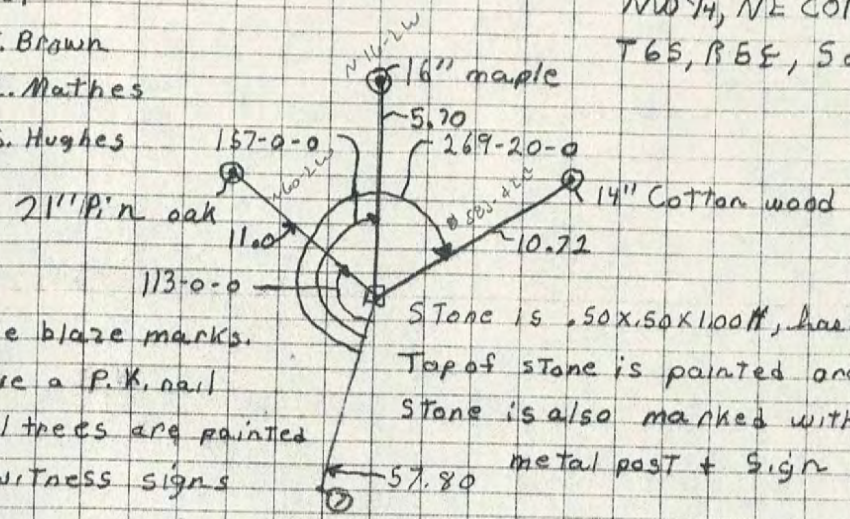
Date 4-22-81

Party Chief T. Brown

Head Chain C. Mathes

Rear Chain S. Hughes

NW 1/4, NE COR.
T6S, R5E, Sect 6



all trees have blaze marks.
 All blazes have a P.K. nail
 in middle. All trees are painted
 red + have witness signs

Stone is .50x.50x1.00ft, has a X
 Top of stone is painted orange
 Stone is also marked with a
 metal post + sign

HARRISON COUNTY

3-C

CORNER 3-C

TOWNSHIP 6 SOUTH

RANGE 5 EAST

2 ND PRINCIPAL MERIDIAN

| LOCATION | DESCRIPTION OF MONUMENT | | DISTANCE FROM CORNER | BEARING FROM CORNER | DATE CHECKED | CHECKED BY | FIELD BOOK | REMARKS |
|-----------------------------------|-------------------------|-----------|----------------------|---------------------|--------------|------------|------------|-------------|
| | MONUMENT | REFERENCE | | | | | | |
| N.W. 1/4 S.E. Corner Section 6 | Axel | 20" Maple | 26.50 | S83-24W | 4-22-81 | T.B. | #1Pg. 20 | Sign Placed |
| | | 8" Maple | 26.30 | N28-26-30E | 4-22-81 | T.B. | | Sign Placed |
| | | 12" Oak | 6.25 | S67-50E | 4-22-81 | T.B. | | Sign Placed |

LAND CORNER RECORD
(RECTANGULAR SURVEYS)

5-E

Index No. E-5

T 6S R 5E County Harrison State Indiana

Section Corner common to Sections 5, 6, 7 and 8

EXISTING SURVEYS

Subsequent Corner Restoration


Year surveyed _____ By _____
 Where filed or recorded Survey Book 1, Page 624, Survey Book 5, Page 383 & Instr. #200902231
 Monument _____
 (Original, concrete post, iron rod, etc...)

Bearing Trees, Reference Objects

Species _____
 Diameter _____
 Bearing _____
 Distance _____

Evidence of Subsequent Corner Restoration Found

Year of search 2011 By VHM, RCW, MAK
Recovered 2½" pipe, projecting 2.9' with existing Yellow Harrison County Surveyor Sign, 0.5' Southeast




| | | | | | | | | | | | | |
|---|----|----|----|----|----|----|----|----|----|----|----|----|
| | 2 | 4 | 6 | 8 | 10 | 12 | 14 | 16 | 18 | 20 | 22 | 24 |
| A | 1 | 3 | 5 | 7 | 9 | 11 | 13 | 15 | 17 | 19 | 21 | 23 |
| B | 6 | 5 | 4 | 3 | 2 | 1 | | | | | | |
| C | | | | | | | | | | | | |
| D | | | | | | | | | | | | |
| E | | | | | | | | | | | | |
| F | 7 | 8 | 9 | 10 | 11 | 12 | | | | | | |
| G | | | | | | | | | | | | |
| H | | | | | | | | | | | | |
| I | | | | | | | | | | | | |
| J | | | | | | | | | | | | |
| K | 18 | 17 | 16 | 15 | 14 | 13 | | | | | | |
| L | | | | | | | | | | | | |
| M | | | | | | | | | | | | |
| N | 19 | 20 | 21 | 22 | 23 | 24 | | | | | | |
| O | | | | | | | | | | | | |
| P | | | | | | | | | | | | |
| Q | | | | | | | | | | | | |
| R | | | | | | | | | | | | |
| S | 30 | 29 | 28 | 27 | 26 | 25 | | | | | | |
| T | | | | | | | | | | | | |
| U | | | | | | | | | | | | |
| V | | | | | | | | | | | | |
| W | | | | | | | | | | | | |
| X | 31 | 32 | 33 | 34 | 35 | 36 | | | | | | |
| Y | | | | | | | | | | | | |

Other Evidence
 Describe evidence of use and occupation such as roads, fences, clearings, timber cutting lines, plantations, etc... Cite source of testimony, if any. Pipe is 55± feet North of crushed stone drive to West.

Perpetuation Record
 Monument and accessories established. Include brief description of area. Left pipe as recovered.

| | | | |
|-----------|-----------------|-----------|---------|
| Ash | W. Oak | Walnut | 48" CMP |
| 11" | 17" | 16" | N. end |
| N 6° E | S 72° W | S 23° E | S 8° E |
| 29.54' | 30.65' | 24.95' | 47.20' |
| MN + 0.6' | to bottom | MN + 0.6' | |
| On W side | nail of HCSS | On W side | |
| | projecting 1.0' | | |

Northing: 1005832.29
 Easting: 228852.34
 RECORDED IN PERPETUATION RECORDS BOOK:
 BY: Harold J. Kluster Date: 8-22-11

5. Signature Vick H. M...
Aug. 08, 2011

HARRISON

COUNTY

9-E

COPNER 9-E

TOWNSHIP 6

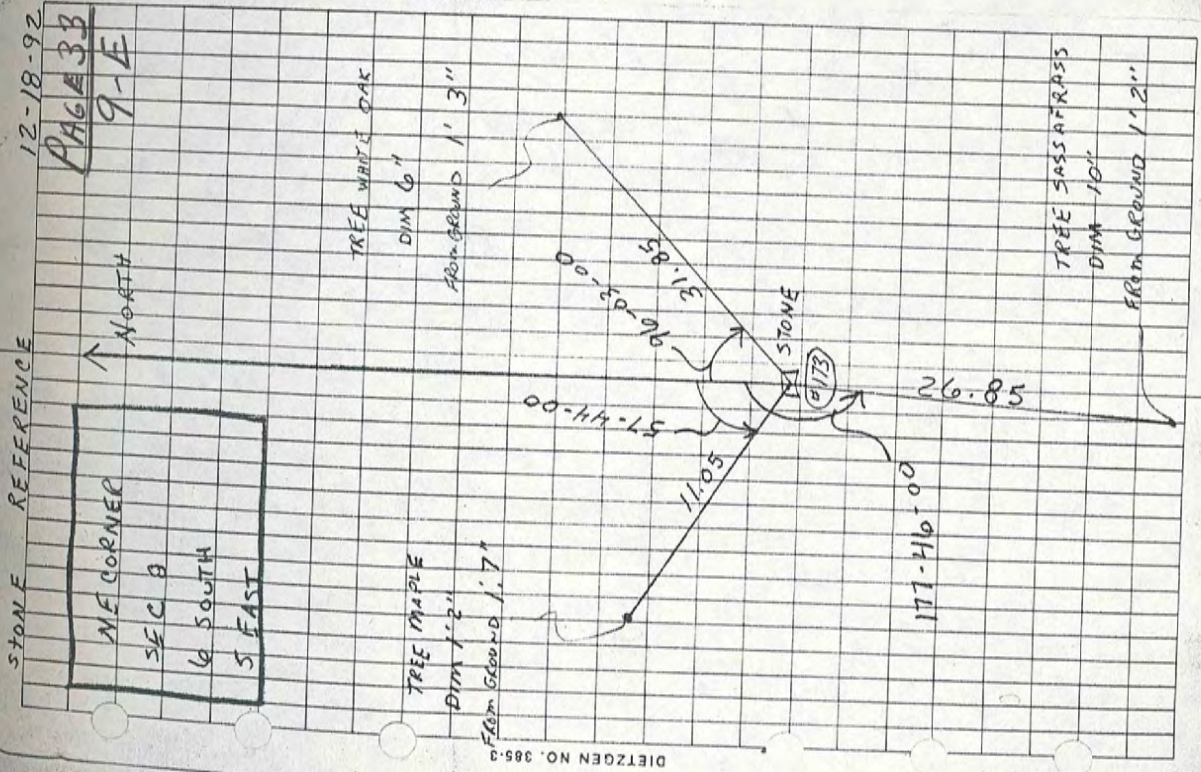
RANGE 5 EAST

2ND

PRINCIPAL MERIDIAN

| LOCATION | DESCRIPTION OF | | DISTANCE FROM CORNER | BEARING FROM CORNER | DATE CHECKED | CHECKED BY | FIELD BOOK | REMARKS |
|-----------------|----------------|----------------|----------------------|---------------------|--------------|------------|------------|-------------|
| | MONUMENT | REFERENCE | | | | | | |
| N.E. Cor. SEC.8 | Stone | 6" White Oak | 31.85 | 96-03-00 | 12-18-92 | ? | #4 Pg.3B | Sign Placed |
| | | 10" Sassafrass | 26.85 | 177-46-00 | | | | SIGN placed |
| | | 1'2" Maple | 11.05 | 57-44-00 | | | | Sign Placed |

9-E



LAND CORNER RECORD
(RECTANGULAR SURVEYS)

9-E

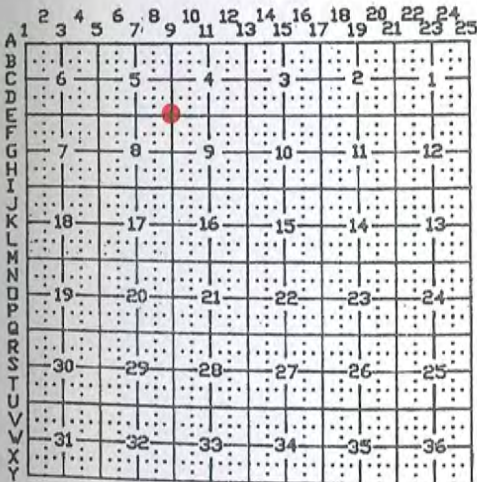
Index No. E-9
 T 6 S R 5 E County Harrison State Indiana
 Section Corner common to Sections 4, 5, 8 and 9

EXISTING SURVEYS

| Subsequent Corner Restoration | Evidence of Subsequent Corner Restoration Found |
|--|--|
| Year surveyed _____ By _____ Where filed or recorded <u>Survey Book 1, Page 624</u> Monument _____ <small>(Original, concrete post, iron rod, etc...)</small> | Year of search <u>2011</u> By <u>VHM, RCW, MAK</u> <u>Recovered pinnacle limestone with Yellow Harrison</u> <u>County Surveyor Sign on South side.</u> |
| Bearing Trees, Reference Objects | |
| Species _____ | |
| Diameter _____ | |
| Bearing _____ | |
| Distance _____ | |



Blank area for notes or additional survey details.



Other Evidence

Describe evidence of use and occupation such as roads, fences, clearings, timber cutting lines, plantations, etc... Cite source of testimony, if any. Stone is situated in a hardwoods, 0.3 mile North of Highway 111.

Perpetuation Record

Monument and accessories established. Include brief description of area. Stone left as recovered.

| Sugar | Elm | Sugar |
|-----------|------------|-------------|
| 14" | 12" | 17" |
| N 57° W | S 22° W | N 73° E |
| 11.00' | 9.75' | 22.65' |
| MN + 2.0' | MN + 0.6' | MN + 1.0' |
| On E side | In S crown | In NE crown |

Resource Grade Northing: 1005981.3
 Easting: 239509.8

5. Signature Vick H. M
Aug. 08, 2011

RECORDED IN PERPETUATION RECORDS BOOK:
 BY: Harold Klinton Date: 9-22-11

LAND CORNER RECORD
(RECTANGULAR SURVEYS)

9-F

Index No. F.25-9

T 6 S R 5 E County Harrison State Indiana

Centerline State Highway 111 at Sections 8 and 9

EXISTING SURVEYS

Subsequent Corner Restoration

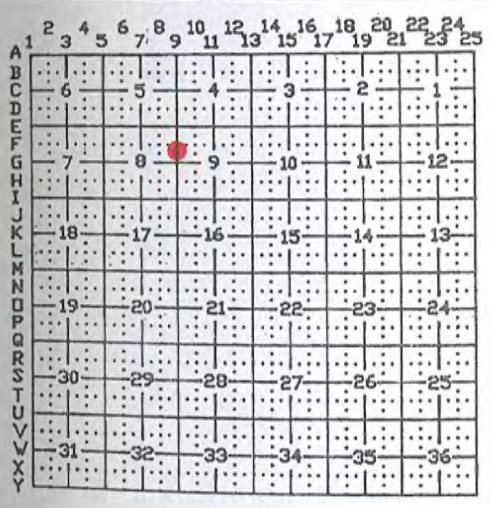
Year surveyed _____ By _____
 Where filed or recorded Survey Book 1, Page 624
 Monument _____
(Original, concrete post, iron rod, etc...)

Bearing Trees, Reference Objects

Species _____
 Diameter _____
 Bearing _____
 Distance _____

Evidence of Subsequent Corner Restoration Found

Year of search 2011 By VHM, RCW, MAK



Other Evidence

Describe evidence of use and occupation such as roads, fences, clearings, timber cutting lines, plantations, etc... Cite source of testimony, If any. _____

Perpetuation Record

Monument and accessories established. Include brief description of area. Set #5 by 0.8' rebar, 0.6' deep, with mag hub in conc. plug over monument.

| Hackberry | Sugar | #4 (Bent) | #5 rebar |
|-----------|------------|--------------|--------------|
| 21" | 10" | W/T post | W/Carsonite |
| S 11° W | N 57° W | N 0°42'06" W | S 0°42'06" E |
| 26.04' | 36.93' | 22.90' | 35.40' |
| MN + 2.0' | MN + 1.0' | | |
| On E side | On SW side | | |
| W/HCSS | | | |

Northing: 1004326.31
 Easting: 239530.06

RECORDED IN PERPETUATION RECORDS BOOK:
 BY: Harold Klumpp Date: 8-27-11

5. Signature Vit H. M.
Aug. 11, 2011

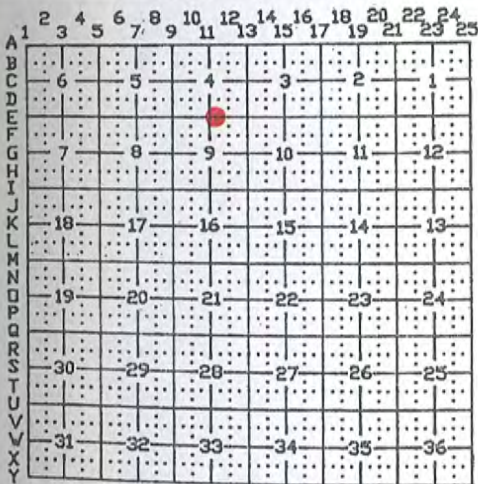
LAND CORNER RECORD
(RECTANGULAR SURVEYS)

11-E

Index No. E-11.59
 T. 6S R. 5E County Harrison State Indiana
 Centerline State Highway 111 at Sections 4 and 9

EXISTING SURVEYS

| Subsequent Corner Restoration | Evidence of Subsequent Corner Restoration Found |
|--|--|
| Year surveyed _____ By _____ Where filed or recorded _____ Monument _____ (Original, concrete post, iron rod, etc...) | Year of search <u>2011</u> By <u>VHM, RCW, MAK</u> |
| Bearing Trees, Reference Objects Species _____ Diameter _____ Bearing _____ Distance _____ | |



Other Evidence
 Describe evidence of use and occupation such as roads, fences, clearings, timber cutting lines, plantations, etc... Cite source of testimony, If any.

Perpetuation Record

Monument and accessories established. Include brief description of area. Set #5 by 0.8' rebar, 0.6' deep, with mag hub in conc. plug over monument.

| | | |
|-----------------|--------------|--------------|
| Steel pin w/cap | Hackberry | Ash |
| W/Carsonite | 28" (triple) | 26" |
| N 3°39' W | S 85° E | S 21° W |
| 40.85' | 36.70' | 43.91' |
| | To bottom | To bottom |
| | nail in HCSS | nail in HCSS |

Northing: 1006073.44
 Easting: 242932.81

5. Signature Vit H. M.
Aug. 08, 2011

RECORDED IN PERPETUATION RECORDS BOOK:
 BY: [Signature] Date: 8-22-11

LAND CORNER RECORD
(RECTANGULAR SURVEYS)

13-D

Index No. D.17-13
 T 6 S R 5 E County Harrison State Indiana
 Centerline State Highway 111 to Sections 3 and 4

EXISTING SURVEYS

Subsequent Corner Restoration

Year surveyed _____ By _____
 Where filed or recorded Survey Book 1, Page 624
 Monument _____
 (Original, concrete post, iron rod, etc...)

Bearing Trees, Reference Objects

Species _____
 Diameter _____
 Bearing _____
 Distance _____

Evidence of Subsequent Corner Restoration Found

Year of search 2011 By VHM, RCW, MAK



| | | | | | | | | | | | | | | | | | | | | | | | | | |
|---|----|----|----|----|----|----|---|---|----|----|----|----|----|----|----|----|----|----|----|----|----|----|----|----|----|
| | 2 | 3 | 4 | 5 | 6 | 7 | 8 | 9 | 10 | 11 | 12 | 13 | 14 | 15 | 16 | 17 | 18 | 19 | 20 | 21 | 22 | 23 | 24 | 25 | |
| A | 1 | 2 | 3 | 4 | 5 | 6 | 7 | 8 | 9 | 10 | 11 | 12 | 13 | 14 | 15 | 16 | 17 | 18 | 19 | 20 | 21 | 22 | 23 | 24 | 25 |
| B | 6 | 5 | 4 | 3 | 2 | 1 | | | | | | | | | | | | | | | | | | | |
| C | | | | | | | | | | | | | | | | | | | | | | | | | |
| D | 7 | 8 | 9 | 10 | 11 | 12 | | | | | | | | | | | | | | | | | | | |
| E | | | | | | | | | | | | | | | | | | | | | | | | | |
| F | | | | | | | | | | | | | | | | | | | | | | | | | |
| G | | | | | | | | | | | | | | | | | | | | | | | | | |
| H | | | | | | | | | | | | | | | | | | | | | | | | | |
| I | | | | | | | | | | | | | | | | | | | | | | | | | |
| J | | | | | | | | | | | | | | | | | | | | | | | | | |
| K | 18 | 17 | 16 | 15 | 14 | 13 | | | | | | | | | | | | | | | | | | | |
| L | | | | | | | | | | | | | | | | | | | | | | | | | |
| M | | | | | | | | | | | | | | | | | | | | | | | | | |
| N | | | | | | | | | | | | | | | | | | | | | | | | | |
| O | | | | | | | | | | | | | | | | | | | | | | | | | |
| P | | | | | | | | | | | | | | | | | | | | | | | | | |
| Q | | | | | | | | | | | | | | | | | | | | | | | | | |
| R | | | | | | | | | | | | | | | | | | | | | | | | | |
| S | | | | | | | | | | | | | | | | | | | | | | | | | |
| T | | | | | | | | | | | | | | | | | | | | | | | | | |
| U | | | | | | | | | | | | | | | | | | | | | | | | | |
| V | | | | | | | | | | | | | | | | | | | | | | | | | |
| W | | | | | | | | | | | | | | | | | | | | | | | | | |
| X | | | | | | | | | | | | | | | | | | | | | | | | | |
| Y | | | | | | | | | | | | | | | | | | | | | | | | | |

Other Evidence
 Describe evidence of use and occupation such as roads, fences, clearings, timber cutting lines, plantations, etc... Cite source of testimony, If any. _____

Perpetuation Record
 Monument and accessories established. Include brief description of area. Set #5 by 0.8' rebar, 0.6' deep, with mag nail set in conc. plug over monument.

| | | | | |
|------------------------|----------|------------------|------------------------|-----------|
| SP w/cap | SP w/cap | KY Coffee | R. Oak | Hackberry |
| W/C-post | W/C-post | 21" | 23" | 18" |
| South | North | N 15° W | N 87° W | S 12° W |
| 35.00' | 35.00' | 22.23' | 45.31' | 45.63' |
| To bottom of nail HCSS | | W/HCSS | To bottom of nail HCSS | |
| +3' on E side | | in S. crown root | +6' on N. side | |

Northing: 1007225.45
 Easting: 244830.89

5. Signature Vick H.M.
Aug. 08, 2011

RECORDED IN PERPETUATION RECORDS BOOK:
 BY: Harold Plustan Date: 8-22-11

