

Point No. 213

11-Q

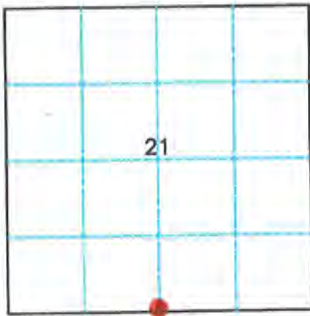
Harrison Co. No. Q-11

T 4 S R 3 E 2nd Mer. County Harrison State Indiana

1/4 Corner common to Sections 21 and 28

EXISTING SURVEYS

Original Government Survey	Original Evidence Found
Year surveyed <u>1805</u> Original monument <u>Wood Post</u> <small>(wood post, stone, pile of stones, etc.)</small> <hr/> Bearing Trees Species _____ Diameter _____ Bearing _____ Distance _____	Year of search <u>N/A</u> By _____ Monument found _____ <hr/> Original Bearing Trees Found Species _____ Diameter _____ Bearing _____ Distance _____
Subsequent Corner Restoration	Evidence of Subsequent Corner Restoration Found
Year surveyed _____ By _____ Where filed or recorded _____ Monument _____ <small>(Original, concrete post, iron rod, etc...)</small> <hr/> Bearing Trees, Reference Objects Species _____ Diameter _____ Bearing _____ Distance _____	Year of search <u>2009</u> By <u>VHM</u> <u>Recovered #4 steel pin with cap, Primavera (L.S. 0131)</u> <u>at old down fence corner.</u>



Relation of Evidence to Record Features Along Section Lines
 Section line to sections _____
 Object _____
 Record Distance _____
 Measured Distance _____

Other Evidence
 Describe evidence of use and occupation such as roads, fences, clearings, timber cutting lines, plantations, etc... Cite source of testimony, If any. _____

Perpetuation Record
 Monument and accessories established. Include brief description of area. The pin was left in place as recovered.

Hackberry	Walnut	Sugar	Carsonite
18"	8"	10" W/sign	Post
N 18° E	S 27° E	N 77° W	South
4.6'	6.6'	11.6'	0.5'
MN + 1.0'	MN + 1.0'	MN + 1.0'	
E. Side	W. Side	S. Side	

- At time of search:
- Did you have the record description? Yes X No _____
 - How was search area located? pacing, chaining, photo, maps, etc. SURVEYING
 - Man hours spent in search N/A
 - Do you think additional search might recover evidence? Yes _____ No X
 - Signature Vick H. Mc

Certified corner restoration certificate prepared Yes _____ No X
 Filed in county records at _____ Date _____ County No. _____
 Identified on aerial photo No. _____ Which is filed at _____

11-Q

6/39

HARRISON COUNTY SURVEYOR
 CORNER MONUMENT RECOVERY & REFERENCE RECORD

TOWNSHIP: 4 RANGE: 3 SECTION: 21

CORNER REF. ID: 11-Q
 DATE: 5/1/09

MONUMENT INFORMATION

LOCATION: 1/4 CORNER Common to Sec. 21+28

DESCRIPTION: #4 STEEL PIN w/CAP @ DOWNED FENCE CORNER

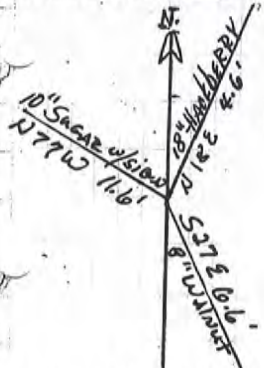
ADDITIONAL DISTINGUISHING CHARACTERISTICS:

CARSONITE Post 0.5' South

REPLACED: () YES DATE: 1/1

WITNESS MARKERS

TYPE	SIGN	BLAZE	ADDITION DESCRIPTION
1 1 1/2" Hackberry	()	()	N 18 E 4.6'
2 8" Walnut	()	()	S 27 E 6.6'
3 10" Sugar w/sign	(X)	()	N 77 W 11.6'



1	2	3	4	5	6	7	8	9	10	11	12	13	14	15	16	17	18	19	20	21	22	23	24
1	2	3	4	5	6	7	8	9	10	11	12	13	14	15	16	17	18	19	20	21	22	23	24
1	2	3	4	5	6	7	8	9	10	11	12	13	14	15	16	17	18	19	20	21	22	23	24
1	2	3	4	5	6	7	8	9	10	11	12	13	14	15	16	17	18	19	20	21	22	23	24
1	2	3	4	5	6	7	8	9	10	11	12	13	14	15	16	17	18	19	20	21	22	23	24
1	2	3	4	5	6	7	8	9	10	11	12	13	14	15	16	17	18	19	20	21	22	23	24
1	2	3	4	5	6	7	8	9	10	11	12	13	14	15	16	17	18	19	20	21	22	23	24
1	2	3	4	5	6	7	8	9	10	11	12	13	14	15	16	17	18	19	20	21	22	23	24
1	2	3	4	5	6	7	8	9	10	11	12	13	14	15	16	17	18	19	20	21	22	23	24
1	2	3	4	5	6	7	8	9	10	11	12	13	14	15	16	17	18	19	20	21	22	23	24

COVERED BY: W. McCauley

DATE: 5/1/09
 DATE: / /
 DATE: / /

RECORDED BY: TDB

DATE: 7/23/09
 DATE: / /
 DATE: / /

RECORDED IN PERPETUATION RECORDS BOOK:

BY: Thomas O. Bule

DATE: 7/27/09

HARRISON

COUNTY

COPNER 11-U

TOWNSHIP 4

RANGE 3

EAST

2ND

PRINCIPAL MERIDIAN

LOCATION	DESCRIPTION OF		DISTANCE FROM CORNER	BEARING FROM CORNER	DATE CHECKED	CHECKED BY	FIELD BOOK	REMARKS
	MONUMENT	REFERENCE						
N.W. CORNER N.E. 1/4 SECTION 33	#4 REBAR	THE REBAR & FENCE CORNER ARE MARKED WITH METAL POST						
		0.70 Ø MAPLE	1.3' up	SOUTH	9-27-94	T.B.	#4 Pg52	SIGN PLACED
		1.10 Ø D. MAPLE	1.3' up	EAST				SIGN PLACED
		0.90 Ø D. MAPLE	1.40' up	WEST				SIGN PLACED

11-0

1111

All trees have a blaze N with a aluminum nail in middle. All trees have a witness sign

NW COR. ME Y4
SECT 33 T 45 R 3E

1.10 double maple, nail on east side + 1.3' up.

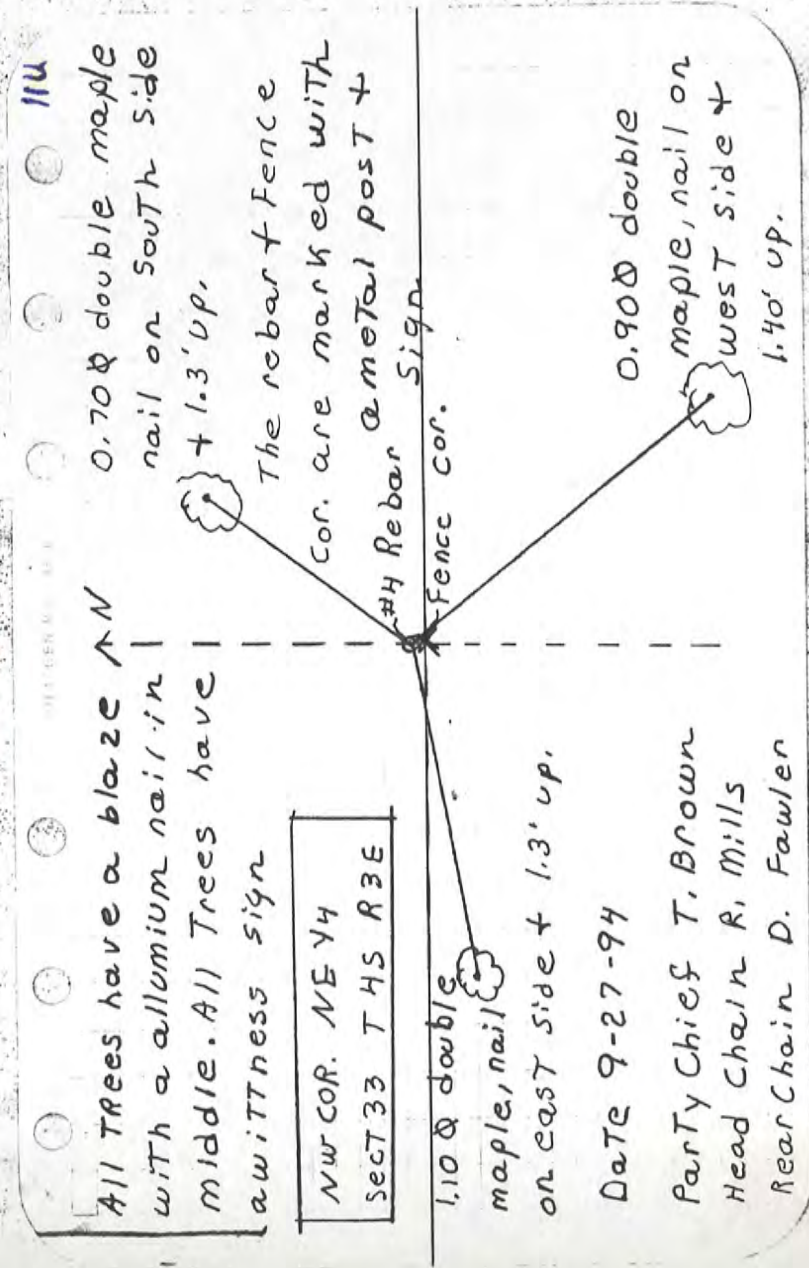
Date 9-27-94

Party Chief T. Brown
Head Chain R. Mills
Rear Chain D. Fowler

0.70 double maple nail on south side + 1.3' up.

The rebar + fence cor. are marked with #4 rebar a metal post + fence cor. sign

0.90 double maple, nail on west side + 1.40' up.



HARRISON

COUNTY

12-U

CORNER 12-U

TOWNSHIP 4

RANGE 3

EAST

2ND

PRINCIPAL MERIDIAN

LOCATION	DESCRIPTION OF		DISTANCE FROM CORNER	BEARING FROM CORNER	DATE CHECKED	CHECKED BY	FIELD BOOK	REMARKS
	MONUMENT	REFERENCE						
N.W. CORNER NE 1/4 N.E. 1/4 SECTION 33	#4 REBAR	STONE IS .50 X .40 X .10	18.73	S36-36-0E	9-27-94	T.B.	#4 Pg53	SIGN PLACED
		1.70 Ø D. MAPLE	17.75	N33-04-0E				SIGN PLACED
		0.45 Ø MAPLE	11.10	N68-54-0W				SIGN PLACED

12-0

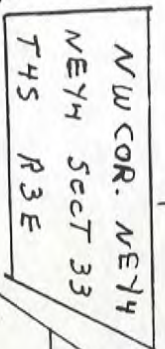
9-27-94 DATE

0.45 & maple, nail
on east side

+ 1.35 up.
168-54-0W 11.10

All trees have a blaze
with a aluminum nail
stone in middle. All trees
have a witness sign

Party Chief T. Brown
Head Chain R. Mills
Rear Chain D. Fowler



N

1.60 & Oak, nail on
west side of .95'
up,
N 33-04-0E 17.75

stone is .50 x
.40 x .10 out of

Rebar ground. Stone
is marked with a
metal post + sign

536-36-0E 18.73

1.70 & double maple
nail on north side
+ 1.25' up.

HARRISON

COUNTY

CORNER 12-W

TOWNSHIP 4

RANGE 3

EAST

2ND

PRINCIPAL MERIDIAN

12-W

LOCATION	DESCRIPTION OF		DISTANCE FROM CORNER	BEARING FROM CORNER	DATE CHECKED	CHECKED BY	FIELD BOOK	REMARKS
	MONUMENT	REFERENCE						
N.W. CORNER NE 1/4 SE 1/4 section 33	R.R. DRIVE WAY " GRAVEL "	TREES	38.72	S68-27-0E	9-29-94	T.B.	#4Pg.55 SIGN PLACED	sign placed
	1.40' Ø CEDAR		11.69	S21-22-0W				sign placed
	TELEPHONE POLE		31.75	N56-12-0W				sign placed

12-W

1211

DIETZEN NO. 53

Party Chief T. Brown
 Head Chain R. Mills
 Rear Chain D. Fowler
 Telephone pole
 nail on east side
 0.70 up.

← DRIVE-WAY "gravel"
 Both trees have a blaze
 with a aluminum nail in
 middle. Both trees + pole
 have a witness sign

RR COUNTY BLACKTOP
 ROAD

N56-12-0W 31.75

568-27-0E 38.72

0.90 Ø Cedar, nail
 on west side +
 3.3' up.
 X X X X X X
 X X X X X X
 521-22-0W 11.69

1.40 Ø Cedar,
 nail on north
 side + 6.7' up.

NW cor.	NE 1/4, SE 1/4
SECT 33	T 45 R 3E

DATE 9-29-94

13-G

HARRISON

COUNTY

CORNER 13-G TOWNSHIP 4 SOUTH RANGE 3 EAST 2 ND PRINCIPAL MERIDIAN

LOCATION	DESCRIPTION OF		DISTANCE FROM CORNER	BEARING FROM CORNER	DATE CHECKED	CHECKED BY	FIELD BOOK	REMARKS
	MONUMENT	REFERENCE						
N.E. Cor. S.E. 1/4, S.E. 1/4, S.E. 1/4 Sec. 9	Stone				9-8-83	T.B.	#2 Pg. 35	Sign Placed

13-G

PAGE 35

Placed a metal post & sign
at stones at

① S. E. Corner of sect 9
T. 4S, R. 3E

② N.E. cor, SE $\frac{1}{4}$, SE $\frac{1}{4}$, SE $\frac{1}{4}$ sect. 9
T. 4S, R. 3E.

Party Chief T. Brown
Head Chain A. Clemente
Rear Chain B. Fetz

Date : :
9-2-83

DIETZGEN NO. 385-3

13-G

LOCATION	DESCRIPTION OF MONUMENT		DISTANCE FROM CORNER	BEARING FROM CORNER	DATE CHECKED	CHECKED BY	FIELD BOOK	REMARKS
	MONUMENT	REFERENCE						
S.E. Corner Sec. 9	Stone				9-8-83	T.B.	#2 Pg. 35	Sign Placed

HARRISON COUNTY

CORNER 13-I TOWNSHIP 4 S RANGE 3 E EAST 2ND PRINCIPAL MERIDIAN

13-I

LOCATION	DESCRIPTION OF		DISTANCE FROM CORNER	BEARING FROM CORNER	DATE CHECKED	CHECKED BY	FIELD BOOK	REMARKS
	MONUMENT	REFERENCE						
Common Corner Sec 9-10-15-16	Limestone 1'x0.3' w/HCSS	T Fence Post	0.7'	N 42 E	5/09	TOB	6/44	
		13" Sass. w/sign	5.2'	N 60 W				
		#4 Pin	0.5'	North				

CORNERS RECOVERED CONTINUED

G-7 CENTER QUARTER CORNER IN SECTION 8, T-4-S, R-3-E
 RECOVERED RAILROAD SPIKE 1.0' DEEP IN BUSSABARGER ROAD PER
 1992 SURVEY BY LS131. THE SPIKE IS 6.5' N OF THE SEP. A MAG. HUB WAS SET
 IN A CONCRETE PLUG OVER THE SPIKE. SEE SURVEY BOOK 1, PAGE 279.

ACCESSORIES ESTABLISHED:

UTILITY POLE W/SIGN, S7°E, 18.1' (SLOPE), MAG NAIL 1' UP ON W SIDE
 FEN. POST, N63°E, 37.2', MAG NAIL 1' UP ON SE SIDE
 "T" FEN POST @ FEN. INTERSECTION, N66°W, 53.0'

I-2 WEST SIXTEENTH CORNER TO SECTIONS 7 & 18, T-4-S, R-3-E
 RECOVERED STONE PER SURVEY BOOK 4, PAGE 187 AND 1986 & 1997
 SURVEYS BY DNR. THE TWO (2) DNR SURVEYS ARE ATTACHED HERETO AND
 MADE A PART HEREOF AS EXHIBITS "B" & "C" RESPECTIVELY. SEE THE
 EXHIBITS FOR ACCESSORIES.

I-3 QUARTER CORNER TO SECTIONS 7 & 18, T-4-S, R-3-E
 RECOVERED STONE PER 1986 & 1997 SURVEYS BY DNR. BOTH SURVEYS
 ARE ATTACHED HERETO AND MADE A PART HEREOF AS EXHIBITS "B" & "C"
 RESPECTIVELY. THE STONE IS CORNER "F" PER 1889 LEGAL SURVEY OF
 RECORD IN LEGAL SURVEY BOOK 1, PAGE 135. SEE THE EXHIBITS FOR
 ACCESSORIES.

I-7 QUARTER CORNER TO SECTIONS 8 & 17, T-4-S, R-3-E
 RECOVERED LIMESTONE 0.5' DEEP AT OLD ABANDONED FENCE
 INTERSECTION. THE TOP 0.6' OF THE STONE WAS FRACTURED AND THE STONE
 WAS LEANING WEST. THE STONE IS ORIENTED IN CARDINAL DIRECTIONS
 AND MEASURES 0.3' BY 0.3' AT THE TOP AND IS 1.9' TALL. THE STONE WAS
 LEFT IN PLACE AS RECOVERED. THIS STONE IS CITED ON A 1988 SURVEY BY
 LS391, WHICH IS ATTACHED TO AND MADE A PART OF INSTRUMENT
 200306921. A #5 BY 30" PIN W/3/4" ALUMINUM CAP WAS SET OVER THE STONE
 AT THE TRUE CORNER POSITION. ACCESSORIES ESTABLISHED:
 CARSONITE POST, N, 0.5'
 SUGAR 10", N86°W, 42.8', MAG NAIL 3' UP ON S SIDE
 SUGAR 13" W/ SIGN, N2°W, 27.2', MAG NAIL 3' UP ON E SIDE
 WOOD FENCE POST, S86°E, 44.0', MAG NAIL 1' UP ON S SIDE

I-13 SECTION CORNER TO SECTIONS 9, 10, 15 & 16, T-4-S, R-3-E
 RECOVERED LIMESTONE 1' BY 0.3' PROJECTING 0.7' AT FENCE "T"
 INTERSECTION. THE STONE HAS AN OLD STYLE METAL WITNESS POST AND
 YELLOW HARRISON COUNTY SURVEY SIGN, 0.5' NORTH OF THE STONE. THE
 STONE WAS LEFT IN PLACE AS RECOVERED. ACCESSORIES ESTABLISHED:
 FENCE "T" POST, N42°E, 0.7', MAG NAIL 1' UP ON SE SIDE
 SASSAFRAS 13" W/ SIGN, N60°W, 5.2', MAG NAIL 1' UP ON NE SIDE
 #4 PIN, NORTH, 0.5'

SURVEY FOR:
 THOMAS O. BUBE
 HARRISON COUNTY SURVEYOR
 300 N. CAPITOL AVENUE
 CORYDON, IN 47112

SURVEY BY:
 MCCAULEY & COMPANY, INC., P.S.C.
 PROFESSIONAL LAND SURVEYORS
 P.O. BOX 39
 ELIZABETH, IN 47117-0039
 812-969-2186
 E-mail mccauleypsc@verizon.net

JOB 10809

13-I

HARRISON COUNTY SURVEYOR
CORNER MONUMENT RECOVERY & REFERENCE RECORD

TWNSHP: 4 RANGE: 3 SECTION: 16

CORNER REF. ID.: 13-I
DATE: 5/1/09

MONUMENT INFORMATION

LOCATION: COMMON CORNER to SEC. 9-10-15+16

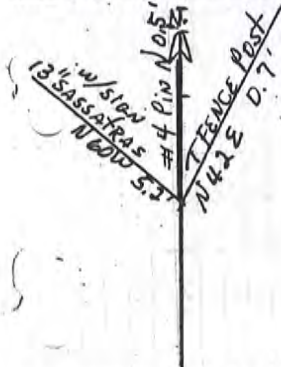
DESCRIPTION: LIMESTONE @ OLD FENCE CORNER w/HCS SIGN
1' x 0.3' PROJECTING 0.7'

ADDITIONAL DISTINGUISHING CHARACTERISTICS:

SIGN PLACED: () YES DATE: 1/1

WITNESS MARKERS

TYPE	SIGN	BLAZE	ADDITION DESCRIPTION
1. FENCE POST	()	()	N 42 E 0.7'
2. 13 SASSAPARAS w/SIGN	(x)	()	N 60 W 5.2'
3. #4 PIN	()	()	NORTH 0.5'



1	2	3	4	5	6	7	8	9	10	11	12	13	14	15	16	17	18	19	20	21	22	23	24	
2																								
3																								
4																								
5																								
6																								
7																								
8																								
9																								
10																								
11																								
12																								
13																								
14																								
15																								
16																								
17																								
18																								
19																								
20																								
21																								
22																								
23																								
24																								

COVERED BY: V. McCouley

DATE: 5/1/09
DATE: 1/1
DATE: 1/1

RECORDED BY: TDB

DATE: 7/28/09
DATE: 1/1
DATE: 1/1

DED IN PERPETUATION RECORDS BOOK:
Thomas O. Babe

DATE: 7/30/09

Point No. 61


Harrison Co. No. I-13

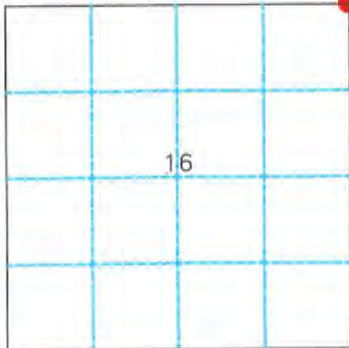
13-I

T 4 S R 3 E 2nd Mer. County Harrison State Indiana

Section Corner common to Sections 9 and 10, 15 & 16

EXISTING SURVEYS

Original Government Survey	Original Evidence Found
Year surveyed <u>1805</u> Original monument <u>Wood Post</u> <small>(wood post, stone, pile of stones, etc.)</small> <hr/> <p style="text-align: center;">Bearing Trees</p> Species _____ Diameter _____ Bearing _____ Distance _____	Year of search <u>N/A</u> By _____ Monument found _____ <hr/> <p style="text-align: center;">Original Bearing Trees Found</p> Species _____ Diameter _____ Bearing _____ Distance _____
Subsequent Corner Restoration	Evidence of Subsequent Corner Restoration Found
Year surveyed _____ By _____ Where filed or recorded _____ Monument _____ <small>(Original, concrete post, iron rod, etc...)</small> <hr/> <p style="text-align: center;">Bearing Trees, Reference Objects</p> Species _____ Diameter _____ Bearing _____ Distance _____	Year of search <u>2009</u> By <u>VHM</u> <u>Recovered limestone at old fence corner with Harrison County Surveyor sign. The stone is 1' X 0.3', projecting 0.7'.</u> 



- At time of search:
- Did you have the record description? Yes No
 - How was search area located?
pacing, chaining, photo, maps, etc. SURVEYING
 - Man hours spent in search N/A
 - Do you think additional search might recover evidence? Yes _____
No
 - Signature Vicki H. M.

Relation of Evidence to Record Features Along Section Lines

Section line to sections _____
 Object _____
 Record Distance _____
 Measured Distance _____

Other Evidence

Describe evidence of use and occupation such as roads, fences, clearings, timber cutting lines, plantations, etc... Cite source of testimony, If any. _____

Perpetuation Record

Monument and accessories established. Include brief description of area. The stone was left in place as recovered.

Fence Post	Sassafras W/sign	#4 Pin
"T"	13"	
N 42° E	N 60° W	North
0.7'	5.2'	0.5'
MN + 1.0'	MN + 1.0'	
SE. Side	NE. Side	

Certified corner restoration certificate prepared Yes _____ No
 Filed in county records at _____ Date _____ County No. _____
 Identified on aerial photo No. _____ Which is filed at _____

HARRISON COUNTY

HARRISON

13-J

CORNER 13-J TOWNSHIP 4 S RANGE 3 E EAST 2ND PRINCIPAL MERIDIAN

LOCATION	DESCRIPTION OF		DISTANCE FROM CORNER	BEARING FROM CORNER	DATE CHECKED	CHECKED BY	FIELD BOOK	REMARKS
	MONUMENT	REFERENCE						
N 1/16 Corn Common to Sec 15-16	RR Spike 0.8' deep mag hub over spike	Util. Pole	55.5'	S 78 W	5/09	TOB	6/31	
		Util Pole w/sign	23.3'	N 8 E				
		Util Pole	77.7'	S 68 E				

13-J

HARRISON COUNTY SURVEYOR
CORNER MONUMENT RECOVERY & REFERENCE RECORD

6/31

TOWNSHIP: 4 RANGE: 3 SECTION: 16

CORNER REF. LD.: 13-J
DATE: 5/10/09

MONUMENT INFORMATION

LOCATION: N 1/4 CORNER Comment to SEC. 15 + 16

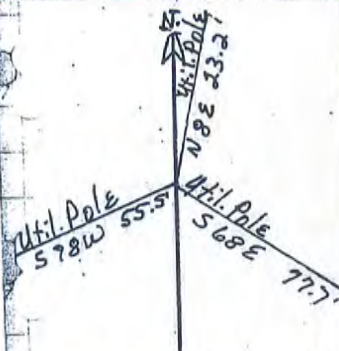
DESCRIPTION: RAILROAD SPIKE 0.8' DEEP IN WINDLELL LANE
MAG. NUB IN CONCRETE PLUG - OVER RR SPIKE

ADDITIONAL DISTINGUISHING CHARACTERISTICS:

RECOVERED: () YES DATE: 1/1

WITNESS MARKERS

TYPE	SIGN	BLAZE	ADDITION DESCRIPTION
1. 4" I. Pole	()	()	S 78 W 55.5'
2. 4" I. Pole w/ SIGN	(X)	()	N 8 E 33.2'
3. 4" I. Pole	()	()	S 68 E 77.7'



1	2	3	4	5	6	7	8	9	10	11	12	13	14	15	16	17	18	19	20	21	22	23	24	
2																								
3																								
4																								
5																								
6																								
7																								
8																								
9																								
10																								
11																								
12																								
13																								
14																								
15																								
16																								
17																								
18																								
19																								
20																								
21																								
22																								
23																								
24																								

RECOVERED BY: V. McCawley

DATE: 5/10/09
DATE: / /
DATE: / /

WITNESSED BY: TEB

DATE: 7/23/09
DATE: / /
DATE: / /

RECORDED IN PERPETUATION RECORDS BOOK:
Thomas O. Baba

DATE: 7/23/09

13-J

HARRISON
TOWNSHIP 4 S

CORNER 13-J

RANGE 3 E EAST 2ND PRINCIPAL MERIDIAN

LOCATION	DESCRIPTION OF		DISTANCE FROM CORNER	BEARING FROM CORNER	DATE CHECKED	CHECKED BY	FIELD BOOK	REMARKS
	MONUMENT	REFERENCE						
N 1/16 Corn Common to Sec 15-16	RR Spike 0.8' deep mag hub over spike	Util. Pole	55.5'	S 78 W	5/09	TOB	6/31	
		Util Pole w/sign	23.3'	N 8 E				
		Util Pole	77.7'	S 68 E				

13-J

HARRISON

COUNTY

CORNER

13-J

TOWNSHIP 4 S

RANGE 3 E

EAST

2ND

PRINCIPAL MERIDIAN

LOCATION	DESCRIPTION OF		DISTANCE FROM CORNER	BEARING FROM CORNER	DATE CHECKED	CHECKED BY	FIELD BOOK	REMARKS
	MONUMENT	REFERENCE						
N 1/16 Corn Common to Sec 15-16	RR Spike 0.8' deep mag hub over spike	Util. Pole	55.5'	S 78 W	5/09	TOB	6/31	
		Util Pole w/sign	23.3'	N 8 E				
		Util Pole	77.7'	S 68 E				

13-J

CORNERS RECOVERED CONTINUED

J-10 NW 1/16th CORNER IN SECTION 16, T-4-S, R-3-E
RECOVERED SANDSTONE OUT OF GROUND AND A 3/4" PIPE AT A 90° FENCE CORNER. THE STONE WAS RESET PER THE COUNTY SURVEYOR'S 1989 RECOVERY NOTES. THE STONE IS 0.2' BY 0.5' PROJECTING 0.4'. A CAIRN OF ROCKS WERE PLACED AROUND THE STONE. THIS IS CORNER "I" PER 1890 LEGAL SURVEY, SEE LEGAL SURVEY BOOK 1, PAGE 152. ACCESSORIES ESTABLISHED:
CARSONITE POST, SOUTH, 0.5'
BEECH 5" W/SIGN, N64°E, 17.2', MAG NAIL 1.5' UP ON S SIDE
TRIPLE POPLAR W/FORK W/OLD SIGN, S8°E, 7.9' MAG NAIL 1.5' UP ON NW SIDE
POPLAR 28", N5°E, 15.6', MAG NAIL 1.5' UP ON E SIDE
FENCE POST W/OLD SIGN, S60°W, 0.8', MAG NAIL 0.6' UP ON E SIDE

J-11 CN 1/16th CORNER IN SECTION 16, T-4-S, R-3-E
RECOVERED 3/4" PIPE PROJECTING 0.8'. THIS CORNER WAS SET DURING 1989 SURVEY BY LS131, JOB #89-3786. A RECORDED COPY OF THIS SURVEY WAS NOT DISCOVERED DURING RESEARCH FOR THIS SURVEY. THIS IS CORNER "I" PER 1890 LEGAL SURVEY, SEE LEGAL SURVEY BOOK 1, PAGE 152. THE 1890 SURVEY CALLS FOR A ROCK AT THIS CORNER. BASED ON THE MEASUREMENTS CITED IN BOTH SURVEYS AND THE VERY OLD AND DISTINCT CULTURAL FEATURES IN THE VICINITY, THE PIPE WAS ACCEPTED AS THE TRUE CORNER. THE 1989 SURVEY IS ATTACHED HERETO AND MADE A PART HERE OF AS EXHIBIT "D". ACCESSORIES ESTABLISHED:
CARSONITE POST, EAST, 0.6'
SUGAR 13" W/SIGN, N89°W, 4.0' MAG NAIL 1' UP IN N SIDE
SUGAR 19", S14°W, 12.9', MAG NAIL 1' UP IN E SIDE
ASH 22", S62°E, 9.3', MAG NAIL 1' UP IN SW SIDE

J-13 NORTH 1/16th CORNER TO SECTIONS 15 & 16, T-4-S, R-3-E
RECOVERED RAILROAD SPIKE OF UNKNOWN ORIGIN 0.8' DEEP IN WINDELL LANE. THE CORNER IS 5' S OF THE NEP. THE POSITION OF THIS CORNER IS SUPPORTED BY MEASUREMENTS TO ADJACENT CORNERS, VERY OLD AND DISTINCT CULTURAL EVIDENCE IN THE VICINITY AND TESTIMONY BY LONG TIME LOCAL RESIDENTS. A MAG HUB WAS SET IN A CONCRETE PLUG OVER THE CORNER. ACCESSORIES ESTABLISHED:
UTILITY POLE, S78°W, 55.5', MAG NAIL 1' UP IN N SIDE
UTILITY POLE W/SIGN, N8°E, 23.2', MAG NAIL 1' UP IN W SIDE
UTILITY POLE, S68°E, 77.7', MAG NAIL 1' UP IN N SIDE
MAIL BOX POST, S10°E, 18.3'

K-6 CW 1/16th CORNER IN SECTION 17, T-4-S, R-3-E
RECOVERED LIMESTONE PER LOCAL DEEDS AND 2002 SURVEY BY LS131, JOB #02-8847. A RECORDED COPY THIS SURVEY WAS NOT RECOVERED DURING RESEARCH FOR THIS PROJECT, THE SURVEY COPY USED IS FROM THE AUDITOR'S OFFICE, WHICH IS ATTACHED HERETO AND MAD A PART HEREOF AS EXHIBIT "E". THE STONE IS OF UNKNOWN ORIGIN BUT CITED IN SEVERAL OLD DEEDS IN THIS VICINITY. THE STONE IS 0.5' BY 0.3' PROJECTING 0.6', WITH A #5SPC-LS131 ON THE EAST SIDE AT A FENCE CORNER.

SURVEY FOR:
THOMAS O. RUBE
HARRISON COUNTY SURVEYOR
300 N. CAPITOL AVENUE
CORYDON, IN 47112

SURVEY BY:
MCCAULEY & COMPANY, INC., P.S.C.
PROFESSIONAL LAND SURVEYORS
P.O. BOX 39
ELIZABETH, IN 47117-0039
812-969-2186
E-mail mccauleypsc@verizon.net

JOB 10809

Point No. 226

13-J

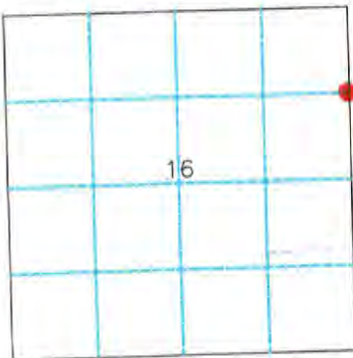
Harrison Co. No. J-13

T 4 S R 3 E 2nd Mer. County Harrison State Indiana

N 1/16 Corner common to Sections 15 and 16

EXISTING SURVEYS

Original Government Survey	Original Evidence Found
Year surveyed <u>N/A</u> Original monument _____ <small>(wood post, stone, pile of stones, etc.)</small>	Year of search _____ By _____ Monument found _____
<p style="text-align: center;">Bearing Trees</p> Species _____ Diameter _____ Bearing _____ Distance _____	<p style="text-align: center;">Original Bearing Trees Found</p> Species _____ Diameter _____ Bearing _____ Distance _____
Subsequent Corner Restoration	Evidence of Subsequent Corner Restoration Found
Year surveyed _____ By _____ Where filed or recorded _____ Monument _____ <small>(Original, concrete post, iron rod, etc...)</small>	Year of search <u>2009</u> By <u>VHM</u> <u>Recovered railroad spike, 0.8' deep, in Windell Lane.</u>
<p style="text-align: center;">Bearing Trees, Reference Objects</p> Species _____ Diameter _____ Bearing _____ Distance _____	



- At time of search:
- Did you have the record description? Yes No _____
 - How was search area located?
pacing, chaining, photo, maps, etc. SURVEYING
 - Man hours spent in search N/A
 - Do you think additional search might recover evidence? Yes _____
No
 - Signature V.H.M.

Relation of Evidence to Record Features Along Section Lines

Section line to sections _____
 Object _____
 Record Distance _____
 Measured Distance _____

Other Evidence

Describe evidence of use and occupation such as roads, fences, clearings, timber cutting lines, plantations, etc... Cite source of testimony, If any. _____

Perpetuation Record

Monument and accessories established. Include brief description of area. Set mag hub in concrete plug over railroad spike.

Utility Pole	Utility Pole W/sign	Utility Pole
S 78° W	N 8° E	S 68° E
55.5'	23.2'	77.7'
MN + 1.0'	MN + 1.0'	MN + 1.0'
N. Side	W. Side	N. Side

Certified corner restoration certificate prepared Yes _____ No

Filed in county records at _____ Date _____ County No. _____

Identified on aerial photo No. _____ Which is filed at _____

13-J

HARRISON COUNTY SURVEYOR
CORNER MONUMENT RECOVERY & REFERENCE RECORD

6/31

TOWNSHIP: 4 RANGE: 3 SECTION: 16

CORNER REF. LD.: 13-J
DATE: 5/1/09

MONUMENT INFORMATION

LOCATION: N 1/4 CORNER Corner to Sec. 15 + 16

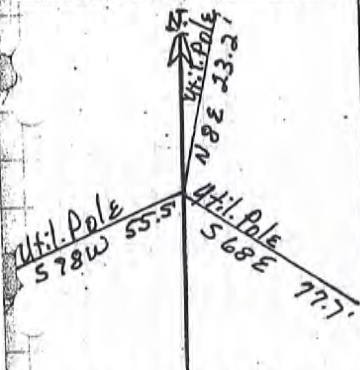
DESCRIPTION: RAILROAD SPIKE 0.8' deep in Windell Lane
MAG. Hub in CONCRETE Plug - OVER RR SPIKE

ADDITIONAL DISTINGUISHING CHARACTERISTICS:

REPLACED: () YES DATE: / /

WITNESS MARKERS

TYPE	SIGN	BLAZE	ADDITION DESCRIPTION
1 Util. Pole	()	()	S 78 W 55.5'
2 Util. Pole w/ SIGN	(X)	()	N 8 E 23.2'
3 Util. Pole	()	()	S 68 E 77.7'



1	2	3	4	5	6	7	8	9	10	11	12	13	14	15	16	17	18	19	20	21	22	23	24	
6	5	4	3	2	1																			
7	8	9	10	11	12																			
16	17	18	19	20	21	22	23	24																
19	20	21	22	23	24																			
20	21	22	23	24	25																			
21	22	23	24	25	26																			

COVERED BY: V. McCawley

DATE: 5/1/09
DATE: / /
DATE: / /

WITNESSED BY: TER

DATE: 7/23/09
DATE: / /
DATE: / /

RECORDED IN PERPETUATION RECORDS BOOK:
Thomas O. Babe

DATE: 7/27/09

HARRISON

JNTY

13-K

CORNER 13-K

TOWNSHIP 4

RANGE 3

EAST

2ND

PRINCIPAL MERIDIAN

LOCATION	DESCRIPTION OF		DISTANCE FROM CORNER	BEARING FROM CORNER	DATE CHECKED	CHECKED BY	FIELD BOOK	REMARKS
	MONUMENT	REFERENCE						
SE Corner, NE $\frac{1}{4}$ Sec. 16	Stone Marked with a $\frac{1}{2}$ " pipe							
		0.80 Maple	13.60	N48-43-0E	7-26-89	T.B.	#3 Pg55	Sign Placed
		1.0 Oak	7.90	S82-0-0E	7-26-89	T.B.		Sign Placed
		0.90 Maple	7.4'	N61-01-0W	7-26-89	T.B.		Sign Placed

13-K

HARRISON

NTY

CORNER 13-K TOWNSHIP 4 S RANGE 3 E EAST 2ND PRINCIPAL MERIDIAN

LOCATION	DESCRIPTION OF		DISTANCE FROM CORNER	BEARING FROM CORNER	DATE CHECKED	CHECKED BY	FIELD BOOK	REMARKS
	MONUMENT	REFERENCE						
1/4 Corner to Sec. 15-16	#5x12" pin w/ may nub							
	in con. plug over pin	Flush Hydrant	23.3'	S 85 W	5/09	TOB	6/42	
		Tele Ped w/sign	21.6'	S 48 E				
		Tele Ped	75.2'	N 2 E				

13-K

HARRISON COUNTY SURVEYOR 6/42
CORNER MONUMENT RECOVERY & REFERENCE RECORD

TWNSHIP 4 RANGE 3 SECTION 16 CORNER REF. LD: 13-K
DATE: 5/1/09

MONUMENT INFORMATION

CATION: 1/4 CORNER Common to Sec 15+16

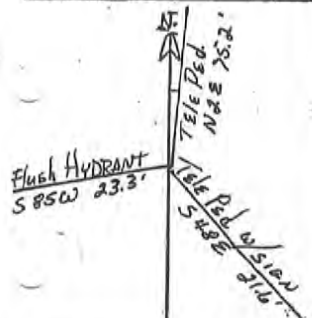
DESCRIPTION:

DITIONAL DISTINGUISHING CHARACTERISTICS:

SIGN PLACED: () YES DATE: / /

WITNESS MARKERS

TYPE	SIGN	BLAZE	ADDITION DESCRIPTION
1. Flush HYDRANT	()	()	S 85 W 23.3'
2. TELE. PED w/ SIGN	(X)	()	S 48 E 31.6'
3. TELE. PED	()	()	N 2 E 75.2'



	1	2	3	4	5	6	7	8	9	10	11	12	13	14	15	16	17	18	19	20	21	22	23	24	
A																									
B																									
C																									
D																									
E																									
F																									
G																									
H																									
I																									
J																									
K																									
L																									
M																									
N																									
O																									
P																									
Q																									
R																									
S																									
T																									
U																									
V																									
W																									
X																									
Y																									
Z																									

RECOVERED BY: D. McCauley DATE: 5/1/09

REFERENCED BY: TOB DATE: 7/28/09

ORDERED IN PERPETUATION RECORDS BOOK: Thomas O. Bube DATE: 7/30/09

13-K

↑ N

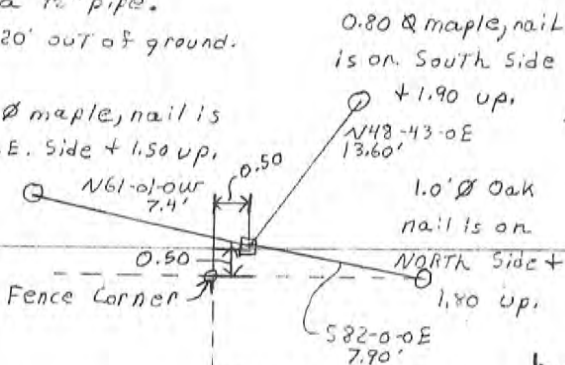
Stone is marked with a 1/2" pipe.
 Stone is 0.40' x 0.50' x 0.20' out of ground.
 Stone has a X in Top.

Fence Corner
 has a government
 Sign.

0.90' Ø maple, nail is
 on S.E. side + 1.50 up.

Party Chief T. Brown
 Head Chain R. Crone
 Rear Chain A. Clements

S.E. Corner, NE 1/4
 Section 16, T45, R3E



All Trees have a
 WITNESS Sign

7-26-89

Page 55
 13-K

13-K

CORNERS RESTORED CONTINUED

K-5 QUARTER CORNER TO SECTIONS 17 & 18, T-4-S, R-3-E
 RESTORED CORNER POSITION ON LINE BETWEEN SECTION CORNERS TO THE NORTH & SOUTH (SEE I-5 & M-5) AND STONE AND QUARTER CORNER TO THE EAST (SEE K-6 & K-9). THE POSITION OF THIS CORNER IS SUPPORTED BY VERY OLD AND DISTINCT CULTURAL FEATURES IN THE VICINITY. SET #5 BY 30" PIN W/3/4" ALUMINUM DISK STAMPED TO DEPICT THE CORNER POSITION. ACCESSORIES ESTABLISHED:
 CARSONITE POST, NORTH, 0.6'
 FENCE CORNER POST W/SIGN. S76°E, 4.7', MAG NAIL 1' UP ON S SIDE
 POPLAR 15", N36°E, 36.1', MAG NAIL 1' UP ON E SIDE
 SUGAR 10", S32°E, 26.1', MAG NAIL 1' UP ON E SIDE
 SPC-LS131, S1°26'E, 18.47' SEE EXHIBIT "E". NOTE THAT NO RECORD SURVEY WAS RECOVERED FOR THIS CORNER DURING RESEARCH THIS SURVEY. THIS CORNER IS DEPICTED AS A FENCE POST IN SEVERAL PRIOR SURVEYS BY LS131 AND BY LS20200046 OF THE SAME OFFICE.

K-9 QUARTER CORNER TO SECTIONS 16 & 17, T-4-S, R-3-E
 RESTORED CORNER POSITION ON LINE BETWEEN SECTION CORNERS TO THE NORTH & SOUTH (SEE I-9 & M-9). THE POSITION OF THIS CORNER IS SUPPORTED BY VERY OLD AND DISTINCT CULTURAL FEATURES IN THE VICINITY. SET #5 BY 30" PIN W/3/4" ALUMINUM DISK STAMPED TO DEPICT THE CORNER POSITION. ACCESSORIES ESTABLISHED:
 CARSONITE POST, EAST, 0.2'
 B. OAK 21", S79°W, 37.3', MAG NAIL 1' UP ON N SIDE
 TWIN SUGAR 21' W/SIGN, S51°E, 19.2', MAG NAIL 1' UP ON NE SIDE
 TWIN B. OAK 10" S STEM W/WIRE, N29°E, 14.7', MAG NAIL 1' UP ON SE FACE
 SPC-LS131, S4°06'W, 9.50' SEE SURVEY BOOK 6, PAGE 397 OR INSTRUMENT 200408684. NO REFERENCE FOR THE CORNER WAS PROVIDED BY THE COUNTY SURVEYOR AND NO RECORDED SURVEY WAS DISCOVERED DURING RESEARCH FOR THIS SURVEY.

K-13 QUARTER CORNER TO SECTIONS 15 & 16, T-4-S, R-3-E
 RESTORED CORNER POSITION ON LINE WITH RECOVERED MONUMENTS TO THE NORTH (SEE I-13 & J-13) PER TESTIMONY BY A LONG TIME LOCAL RESIDENT. THE POSITION OF THIS CORNER IS SUPPORTED BY VERY OLD AND DISTINCT CULTURAL FEATURES IN THE VICINITY. A #5 BY 1' PIN WAS SET 0.6' DEEP AND A MAG HUB WAS SET IN A CONCRETE PLUG OVER THE PIN. THE MONUMENT IS 3 FEET WEST OF THE BEP OF HEIDELBERG ROAD. ACCESSORIES ESTABLISHED:
 FLUSH HYDRANT, S85°W, 23.3'
 TELEPHONE PED. POST W/SIGN, S48°E, 21.6', MAG NAIL 1' UP ON NE SIDE
 TELEPHONE PEDESTAL, N2°E, 75.2'
 MAIL BOX #3031, N26°W, 71.2'

SURVEY FOR:
 THOMAS O. HUBE
 HARRISON COUNTY SURVEYOR
 300 N. CAPITOL AVENUE
 CORYDON, IN 47112

SURVEY BY:
 MCCAULEY & COMPANY, INC., P.S.C.
 PROFESSIONAL LAND SURVEYORS
 P.O. BOX 39
 ELIZABETH, IN 47117-0039
 812-969-2186
 E-mail mccauleypec@verizon.net

JOB 10809

13-K



Stone is marked with a 1/2" pipe.
Stone is 0.40' x 0.50' x 0.20' out of ground.
Stone has a X in Top.

Fence Corner
has a government
Sign.
0.90' Ø maple, nail is
on S.E. side + 1.50 up,
N61-01-0W
7.4'

Party Chief T. Brown
Head Chain R. Crone
Rear Chain A. Clements
S.E. Corner, NE 1/4
Section 16, T4S, R3E

0.80 Ø maple, nail
is on South side

+ 1.90 up,
N48-43-0E
13.60'

1.0' Ø Oak
nail is on

NORTH side +
1.80 up,

S82-0-0E
7.90'

All Trees have a
Witness Sign

68-92-69
7-26-89

PAGE 55
13-K

Point No. 97

Harrison Co. No. K-13

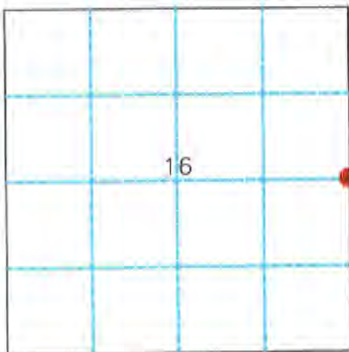
13-K

T 4 S R 3 E 2nd Mer. County Harrison State Indiana

1/4 Corner common to Sections 15 and 16

EXISTING SURVEYS

Original Government Survey	Original Evidence Found
Year surveyed <u>1805</u> Original monument <u>Wood Post</u> <small>(wood post, stone, pile of stones, etc.)</small> <hr/> Bearing Trees Species _____ Diameter _____ Bearing _____ Distance _____	Year of search <u>N/A</u> By _____ Monument found _____ <hr/> Original Bearing Trees Found Species _____ Diameter _____ Bearing _____ Distance _____
Subsequent Corner Restoration	Evidence of Subsequent Corner Restoration Found
Year surveyed _____ By _____ Where filed or recorded _____ Monument _____ <small>(Original, concrete post, iron rod, etc...)</small> <hr/> Bearing Trees, Reference Objects Species _____ Diameter _____ Bearing _____ Distance _____	Year of search <u>2009</u> By <u>VHM</u> <u>No evidence recovered. Long time local resident Mr. Watson said restored corner was very near where he remembered it.</u>



Relation of Evidence to Record Features Along Section Lines

Section line to sections _____
 Object _____
 Record Distance _____
 Measured Distance _____

Other Evidence

Describe evidence of use and occupation such as roads, fences, clearings, timber cutting lines, plantations, etc... Cite source of testimony, If any. Old fence to West.

Perpetuation Record

Monument and accessories established. Include brief description of area. Restored corner from monument recovered to the North and West Set #5 X 12" pin, 0.6' deep with mag hub in concrete plug over pin.

Flush Hydrant	Tele. Ped.	Tele. Ped
	W/sign	
S 85° W	S 48° E	N 2° E
23.3'	21.6'	75.2'
	MN + 1.0'	
	NE. Side	

At time of search:

1. Did you have the record description? Yes X No _____
2. How was search area located?
pacing, chaining, photo, maps, etc. SURVEYING
3. Man hours spent in search N/A
4. Do you think additional search might recover evidence? Yes _____
No X
5. Signature Vit N.M.

Certified corner restoration certificate prepared Yes _____ No X
 Filed in county records at _____ Date _____ County No. _____
 Identified on aerial photo No. _____ Which is filed at _____

13-K

HARRISON COUNTY SURVEYOR
CORNER MONUMENT RECOVERY & REFERENCE RECORD

TWNSHIP: 4 RANGE: 3 SECTION: 16

CORNER REF. LD.: 13-K
DATE: 5 / 1 / 09

MONUMENT INFORMATION

LOCATION: 1/4 CORNER Common to SEC 15+16

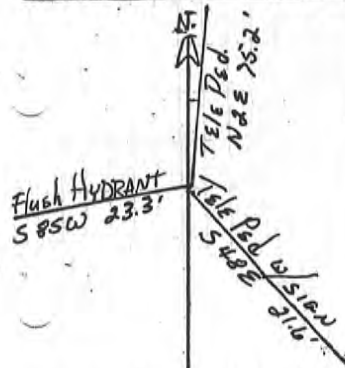
DESCRIPTION: _____

ADDITIONAL DISTINGUISHING CHARACTERISTICS: _____

SIGN PLACED: () YES DATE: 1 / 1 / _____

WITNESS MARKERS

TYPE	SIGN	BLAZE	ADDITION	DESCRIPTION
1. Flush HYDRANT	()	()	S 85W	23.3'
2. TELE. PEDW/SIGN	(X)	()	S 48E	31.6'
3. TELE. PED	()	()	N 32E	75.2'



1	2	3	4	5	6	7	8	9	10	11	12	13	14	15	16	17	18	19	20	21	22	23	24	
25	26	27	28	29	30	31	32	33	34	35	36	37	38	39	40	41	42	43	44	45	46	47	48	49
50	51	52	53	54	55	56	57	58	59	60	61	62	63	64	65	66	67	68	69	70	71	72	73	74
75	76	77	78	79	80	81	82	83	84	85	86	87	88	89	90	91	92	93	94	95	96	97	98	99
100	101	102	103	104	105	106	107	108	109	110	111	112	113	114	115	116	117	118	119	120	121	122	123	124

RECOVERED BY: V. McCauley

DATE: 5 / 1 / 09

DATE: 1 / 1 / _____

DATE: 1 / 1 / _____

REFERENCED BY: T. O. B.

DATE: 7 / 28 / 09

DATE: 1 / 1 / _____

DATE: 1 / 1 / _____

ORDERED IN PERPETUATION RECORDS BOOK:

Thomas O. Bube

DATE: 7 / 130 / 09

HARRISON COUNTY

HARRISON

13-M

COPNER 13-M

TOWNSHIP 4 S

RANGE 3 E

EAST

2ND

PRINCIPAL MERIDIAN

LOCATION	DESCRIPTION OF		DISTANCE FROM CORNER	BEARING FROM CORNER	DATE CHECKED	CHECKED BY	FIELD BOOK	REMARKS
	MONUMENT	REFERENCE						
Common Corner Sec 15-16-21-22	RR Spike		37.2'	S 20 W	5/09	TOB	6/	
		Util. Pole w/ sign	50.1'	N 24 E				
		Tele Ped	77.0'	S 77 E				

13-M

CORNERS RECOVERED CONTINUED

M-11 QUARTER CORNER TO SECTIONS 16 & 21, T-4-S, R-3-E
RECOVERED ROAD NAIL OF UNKNOWN ORIGIN IN FAIRVIEW CHURCH ROAD, WITH FENCING TO THE NORTH & SOUTH. THE POSITION OF THIS CORNER WAS VERIFIED BY MEASUREMENTS TO ADJACENT CORNERS. THE NAIL WAS REPLACE WITH A #5 BY 1' STEEL PIN SET 0.6' DEEP, WITH A MAG NAIL SET IN A CONCRETE PLUG OVER THE PIN. ACCESSORIES ESTABLISHED: FENCE CORNER W/SIGN, N10°E, 19.4', MAG NAIL 1' UP IN W SIDE
MAPLE 28", S26°W, 44.5'
TELEPHONE PEDESTAL POLE, S 6°E, 20.9', MAG NAIL 1' UP IN W SIDE

M-13 SECTION CORNER TO SECTIONS 15, 16, 21 & 22, T-4-S, R-3-E
RECOVERED RAILROAD SPIKE 0.2' DEEP IN THE INTERSECTION OF HEIDELBERG ROAD AND FAIRVIEW CHURCH ROAD. IN MY OPINION THE RAILROAD SPIKE WAS SET BY LS131. THE POSITION OF THIS CORNER IS SUPPORTED BY MEASUREMENTS TO ADJACENT CORNERS AND VERY OLD AND DISTINCT CULTURAL FEATURES IN THE VICINITY. SEE SURVEYS RECORDED IN SURVEY BOOK 4, PAGE 28 AND INSTRUMENT NUMBERS 200503223, 200603719 & 200700670. A MAG NAIL WAS SET IN A CONCRETE PLUG OVER THE MONUMENT. ACCESSORIES ESTABLISHED: TELEPHONE PEDESTAL, S20°W, 37.2'
UP W/SIGN, N24°E, 50.1', MAG NAIL 1' UP ON NW SIDE
TELEPHONE PEDESTAL, S77°E, 77.0'

O-7 CENTER QUARTER CORNER IN SECTION 20, T-4-S, R-3-E
RECOVERED MAG NAIL NEAR THE CENTERLINE INTERSECTION OF BROWN-CUNNINGHAM ROAD AND DIXIE ROAD. IN MY OPINION THE MAG NAIL WAS SET BY LS131 OR LS365 FOR THE SURVEYS THEY CONDUCTED IN THE SE ¼ OF SECTION 20. A LONGTIME LOCAL RESIDENT REMEMBERS THE CORNER "A LITTLE BIT EAST" FROM THE RECOVERED CORNER. THE POSITION OF THIS CORNER IS SUPPORTED BY MEASUREMENTS TO ADJACENT CORNERS AND VERY OLD AND DISTINCT CULTURAL FEATURES IN THE VICINITY. THE MAG NAIL WAS REPLACED WITH A #5 BY 1' PIN SET 0.6' DEEP AND THE MAG NAIL WAS RESET IN A CONCRETE PLUG OVER THE PIN. ACCESSORIES ESTABLISH: UTILITY POLE W/SIGN, N22°E, 41.1', MAG NAIL 1' UP ON W SIDE
TELEPHONE PEDESTAL W/UP, S72°W, 87.9', MAG NAIL 1' UP IN N SIDE
STOP SIGN POST, N25°W, 27.9'

O-9 QUARTER CORNER TO SECTIONS 20 & 21, T-4-S, R-3-E
RECOVERED RAILROAD SPIKE 0.15' DEEP, UNDER A ROAD NAIL, 7' S OF NEP OF BROWN-CUNNINGHAM ROAD. LONG TIME LOCAL RESIDENT, MR. BROWN POINTED OUT THE CORNER AND THE OLD SECTION LINE TO THE NORTH. MR. BROWN ALSO REMEMBERED THE CORNER BEING IN THAT VICINITY FOR A LONG TIME. THE CORNER IS SHOWN ON A 1995 SURVEY BY LS131, BUT NO CORNER MONUMENT IS DEPICTED. THE LS131 SURVEY IS OF RECORD IN SURVEY BOOK 2, PAGE 254. THE CORNER IS ALSO SHOWN ON A 2007 SURVEY BY LS365. THE 2007 SURVEY CITES A MASONRY NAIL AND IS RECORDED IN INSTRUMENT #200800992. THE POSITION OF THE RAILROAD SPIKE IS SUPPORTED BY MEASUREMENTS TO ADJACENT CORNERS AND VERY OLD AND DISTINCT CULTURAL FEATURES IN THE VICINITY.

SURVEY FOR:
THOMAS O. BUBE
HARRISON COUNTY SURVEYOR
300 N. CAPITOL AVENUE
CORYDON, IN 47112

SURVEY BY:
MCCAULEY & COMPANY, INC., P.S.C.
PROFESSIONAL LAND SURVEYORS
P.O. BOX 39
ELIZABETH, IN 47117-0039
812-969-2186
E-mail mccauleypsc@verizon.net

JOB 10809

13-M

HARRISON C. SURVEYOR 6/57
CORNER MONUMENT RECOVERY & REFERENCE RECORD

TOWNSHIP: 4 RANGE: 3 SECTION: _____ CORNER REF. ID.: 13-M
DATE: 5/1/09

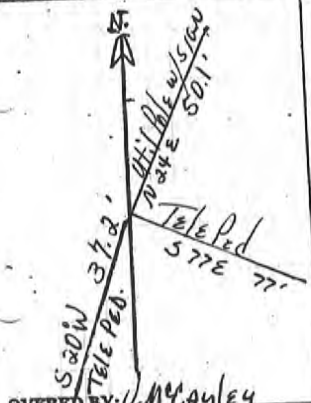
MONUMENT INFORMATION

LOC. OR: Common
DESCRIPTION: RAILROAD Spike 0.2" DEEP, IN INTERSECTION OF
HEIDELBERG ROAD & FAIRVIEW CH. RD. MAGNAIL OVER
RR SPIKE
ADDITIONAL DISTINGUISHING CHARACTERISTICS:

PLACED: () YES DATE: 1/1

WITNESS MARKERS

TYPE	SIGN	BLAZE	ADDITION DESCRIPTION
1 TELE PED	()	()	S 20 W 37.2'
2 Util POLE w/SIGN	(X)	()	N 34 E 50.1'
3 TELE PED	()	()	S 77 E 77'



1	2	3	4	5	6	7	8	9	10	11	12	13	14	15	16	17	18	19	20	21	22	23	24
1	2	3	4	5	6	7	8	9	10	11	12	13	14	15	16	17	18	19	20	21	22	23	24
1	2	3	4	5	6	7	8	9	10	11	12	13	14	15	16	17	18	19	20	21	22	23	24
1	2	3	4	5	6	7	8	9	10	11	12	13	14	15	16	17	18	19	20	21	22	23	24
1	2	3	4	5	6	7	8	9	10	11	12	13	14	15	16	17	18	19	20	21	22	23	24
1	2	3	4	5	6	7	8	9	10	11	12	13	14	15	16	17	18	19	20	21	22	23	24
1	2	3	4	5	6	7	8	9	10	11	12	13	14	15	16	17	18	19	20	21	22	23	24
1	2	3	4	5	6	7	8	9	10	11	12	13	14	15	16	17	18	19	20	21	22	23	24
1	2	3	4	5	6	7	8	9	10	11	12	13	14	15	16	17	18	19	20	21	22	23	24
1	2	3	4	5	6	7	8	9	10	11	12	13	14	15	16	17	18	19	20	21	22	23	24

COVERED BY: C. McCauley

DATE: 5/1/09
DATE: / /
DATE: / /

REFERENCED BY: TOB

DATE: 7/30/09
DATE: / /
DATE: / /

RECORDED IN PERPETUATION RECORDS BOOK:
BY: Thomas O. Bule

DATE: 8/6/09

Point No. 22

Harrison Co. No. M-13

13-M

T 4 S R 3 E 2nd Mer. County Harrison State Indiana

Section Corner common to Sections 15 and 16, 21 & 22

EXISTING SURVEYS

Original Government Survey	Original Evidence Found
Year surveyed <u>1805</u> Original monument <u>Wood Post</u> <small>(wood post, stone, pile of stones, etc.)</small> <hr/> Bearing Trees Species _____ Diameter _____ Bearing _____ Distance _____	Year of search <u>N/A</u> By _____ Monument found _____ <hr/> Original Bearing Trees Found Species _____ Diameter _____ Bearing _____ Distance _____
Subsequent Corner Restoration	Evidence of Subsequent Corner Restoration Found
Year surveyed _____ By <u>PAS</u> Where filed or recorded _____ Monument _____ <small>(Original, concrete post, iron rod, etc...)</small> <hr/> Bearing Trees, Reference Objects Species _____ Diameter _____ Bearing _____ Distance _____	Year of search <u>2009</u> By <u>VHM</u> <u>Recovered railroad spike, 0.2' deep, in intersection of Heidelberg Road and Fairview Road.</u>



Relation of Evidence to Record Features Along Section Lines

Section line to sections _____
 Object _____
 Record Distance _____
 Measured Distance _____

Other Evidence

Describe evidence of use and occupation such as roads, fences, clearings, timber cutting lines, plantations, etc... Cite source of testimony, if any. Corner in very old County Road intersection. See surveys in the Harrison County Surveyor's files

Perpetuation Record

Monument and accessories established. Include brief description of area. Set mag nail in concrete plug over railroad spike.

Tele. Ped.	Utility Pole	Tele. Ped.
	W/sign	
S 20° W	N 24° E	S 77° E
37.2'	50.1'	77.0'
	MN + 1.0'	
	NW. Side	

Certified corner restoration certificate prepared Yes _____ No X
 Filed in county records at _____ Date _____ County No. _____
 Identified on aerial photo No. _____ Which is filed at _____

At time of search:

- Did you have the record description? Yes X No _____
- How was search area located? pacing, chaining, photo, maps, etc. SURVEYING
- Man hours spent in search N/A
- Do you think additional search might recover evidence? Yes _____ No X
- Signature Vick H. M.

HARRISON

COUNTY

13-0

COPNER 13-0

TOWNSHIP 4 S

RANGE 3 E

EAST

2ND

PRINCIPAL MERIDIAN

LOCATION	DESCRIPTION OF		DISTANCE FROM CORNER	BEARING FROM CORNER	DATE CHECKED	CHECKED BY	FIELD BOOK	REMARKS
	MONUMENT	REFERENCE						
1/4 Corner to Sec. 21-22	#5 Pin 0.2' deep in intersec.	Tele Ped	30.2'	S 26 E	5/09	TOB	6/30	
		Util Pole w/sign	29.9'	S 52 W				
		Tele Ped	67.6'	N 54 W				

CORNERS RECOVERED CONTINUED

O-9 QUARTER CORNER TO SECTIONS 20 & 21, T-4-S, R-3-E, CONTINUED
A MAG NAIL WAS SET IN A CONCRETE PLUG OVER THE RAILROAD SPIKE.
ACCESSORIES ESTABLISHED:
TELEPHONE PEDESTAL POST W/SIGN, N23°W, 11.8', MAG NAIL 1' UP ON E SIDE
FENCE CORNER, N66°W, 41.0', MAG NAIL 1' UP ON SW SIDE
STEEL MAIL BOX POST, S49°E, 26.2'

O-11 CENTER QUARTER CORNER IN SECTION 21, T-4-S, R-3-E
RECOVERED ROAD NAIL AS DEPICTED ON THE ABOVE CITED 2007
SURVEY BY LS365. THE NAIL IS 8' SOUTH OF THE NEP OF BROWN-
CUNNINGHAM ROAD IN LINE WITH FENCING TO THE NORTH & SOUTH. THE
POSITION OF THE NAIL IS SUPPORTED BY MEASUREMENTS TO ADJACENT
CORNERS AND VERY OLD AND DISTINCT CULTURAL FEATURES IN THE
VICINITY. A #5 BY 1' PIN WAS SET 0.6' DEEP AND A MAG NAIL WAS SET IN A
CONCRETE PLUG OVER THE PIN. ACCESSORIES ESTABLISHED:
FENCE POST, NORTH, 15.8', MAG NAIL 1' UP ON E SIDE
TELEPHONE PEDESTAL, N32°W, 16.1'
FENCE CORNER W/SIGN, S1°W, 13.3', MAG NAIL 1' UP ON E SIDE

O-13 QUARTER CORNER TO SECTIONS 21 & 22, T-4-S, R-3-E
RECOVERED #5 SPC, LS336 IN THE INTERSECTION OF HEIDELBERG ROAD
AND BROWN-CUNNINGHAM ROAD. THE PIN IS 2' S & 5' E OF THE CENTERLINE
INTERSECTION. THE POSITION OF THE SPC IS SUPPORTED BY
MEASUREMENTS TO ADJACENT CORNERS AND VERY OLD AND DISTINCT
CULTURAL FEATURES IN THE VICINITY. SEE SURVEYS RECORDED IN SURVEY
BOOK 4, PAGE 28 AND INSTRUMENT NUMBERS 200503223, 200603719 &
200700670. A MAG NAIL WAS SET IN A CONCRETE PLUG OVER THE
MONUMENT. ACCESSORIES ESTABLISHED:
TELEPHONE PEDESTAL, S26°E, 30.2'
UTILITY POLE W/SIGN, S52°W, 29.9', MAG NAIL 1' UP ON SE SIDE
TELEPHONE PEDESTAL, N54°W, 67.6'

Q-1 WEST SECTION CORNER TO SECTIONS 19 & 30, T-4-S, R-3-E
5/8" CRIMPED TOP PIPE CORNER "E" PER 2002 DNR SURVEY WHICH IS
ATTACHED HERETO AND MADE A PART HEREOF AS EXHIBIT "E" AND SW
CORNER SECTION 19 PER 2006 SURVEY BY LS451 OF RECORD IN INSTRUMENT
#200701409. SEE EXHIBIT "G" FOR ACCESSORIES.

Q-2 WEST SIXTEENTH CORNER TO SECTIONS 19 & 30, T-4-S, R-3-E
#4 PIN CORNER "F" PER 2002 DNR SURVEY WHICH IS ATTACHED HERETO
AND MADE A PART HEREOF AS EXHIBIT "E" AND CORNER ON SOUTH LINE OF
SECTION 19 PER 2006 SURVEY BY LS451 OF RECORD IN INSTRUMENT
#200701409. SEE EXHIBIT "G" FOR ACCESSORIES.

Q-9 SECTION CORNER TO SECTIONS 20, 21, 28 & 29, T-4-S, R-3-E
RECOVERED FRACTURED STONE PER 1995 SURVEY BY LS131, SEE
SURVEY BOOK 2, PAGE 254 AND 2007 SURVEY BY LS365. SEE INSTRUMENT
#200800992. THE STONE IS IN AN E-W FENCE LINE ON THE E SIDE OF A BRACE
POST, THE FENCE "T" CORNER IS 8.3' WEST.

SURVY FOR:
THOMAS O. BUBE
HARRISON COUNTY SURVEYOR
300 N. CAPITOL AVENUE
CORYDON, IN 47112

SURVEY BY:
MCCAULEY & COMPANY, INC., P.S.C.
PROFESSIONAL LAND SURVEYORS
P.O. BOX 39
ELIZABETH, IN 47117-0039
812-969-2186
E-mail mccauleypsc@verizon.net

Point No. 21

Harrison Co. No. O-13

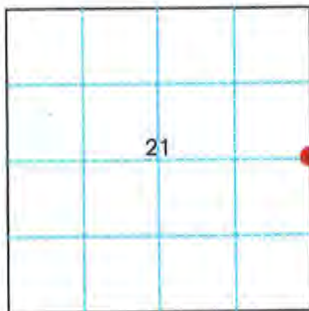
13-0

T 4 S R 3 E 2nd Mer. County Harrison State Indiana

$\frac{1}{4}$ Corner common to Sections 21 and 22

EXISTING SURVEYS

Original Government Survey	Original Evidence Found
Year surveyed <u>1805</u> Original monument <u>Wood Post</u> <small>(wood post, stone, pile of stones, etc.)</small> <hr/> Bearing Trees Species _____ Diameter _____ Bearing _____ Distance _____	Year of search <u>N/A</u> By _____ Monument found _____ <hr/> Original Bearing Trees Found Species _____ Diameter _____ Bearing _____ Distance _____
Subsequent Corner Restoration	Evidence of Subsequent Corner Restoration Found
Year surveyed _____ By _____ Where filed or recorded _____ Monument _____ <small>(Original, concrete post, iron rod, etc...)</small> <hr/> Bearing Trees, Reference Objects Species _____ Diameter _____ Bearing _____ Distance _____	Year of search <u>2009</u> By <u>VHM</u> <u>Recovered #5 pin, 0.2' deep in intersection of Heidelberg Road and Brown-Cunningham Road.</u>



Relation of Evidence to Record Features Along Section Lines
 Section line to sections _____
 Object _____
 Record Distance _____
 Measured Distance _____

Other Evidence
 Describe evidence of use and occupation such as roads, fences, clearings, timber cutting lines, plantations, etc... Cite source of testimony, If any. See surveys in the Harrison County Surveyor's files

Perpetuation Record
 Monument and accessories established. Include brief description of area. Corner is 2 feet South and 5 feet East from centerline of intersection to the East.

Tele. Ped.	Utility Pole	Tele. Ped.
	W/sign	
S 26° E	S 52° W	N 54° W
30.2'	29.9'	67.6'
	MN + 0.1'	
	SE. Side	

- At time of search:
- Did you have the record description? Yes X No _____
 - How was search area located? pacing, chaining, photo, maps, etc. SURVEYING
 - Man hours spent in search N/A
 - Do you think additional search might recover evidence? Yes _____ No X
 - Signature Vick H.M.

Certified corner restoration certificate prepared Yes _____ No X
 Filed in county records at _____ Date _____ County No. _____
 Identified on aerial photo No. _____ Which is filed at _____

13-0

6/30

HARRISON COUNTY SURVEYOR
CORNER MONUMENT RECOVERY & REFERENCE RECORD

TWNSHIP: 4 RANGE: 3 SECTION: 21

CORNER REF. LD. 13-0
DATE: 5/1/09

MONUMENT INFORMATION

LOCATION: 1/4 CORNER COMMANDO SEC 21+22

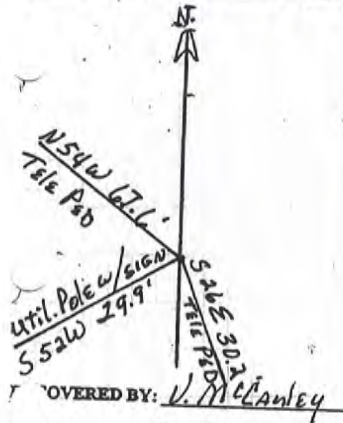
DESCRIPTION: #5 Pin 0.2" deep in intersection of Heidelberg Rd + BROWN CUNNINGHAM ROAD.

ADDITIONAL DISTINGUISHING CHARACTERISTICS: CORNER IS 2' SOUTH + 5' EAST FROM CENTERLINE OF INTERSECTION TO THE EAST.

SIGN PLACED: () YES DATE: 1/1

WITNESS MARKERS

TYPE	SIGN	BLAZE	ADDITION DESCRIPTION
1. TELE PEB.	()	()	S 26 E 30.2'
2. UTIL. POLE W/SIGN	(X)	()	S 52 W 29.9'
3. TELE PEB	()	()	N 54 W 67.6'



1	2	3	4	5	6	7	8	9	10	11	12	13	14	15	16	17	18	19	20	21	22	23	24	
A																								
B																								
C																								
D																								
E																								
F																								
G																								
H																								
I																								
J																								
K																								
L																								
M																								
N																								
O																								
P																								
Q																								
R																								
S																								
T																								
U																								
V																								
W																								
X																								
Y																								
Z																								

COVERED BY: V. McCauley

DATE: 5/1/09
DATE: / /
DATE: / /

REFERENCED BY: TOB

DATE: 7/23/09
DATE: / /
DATE: / /

ORDERED IN PERPETUATION RECORDS BOOK:
Thomas G. Bule

DATE: 7/27/09

HARRISON

COUNTY

13-Q

CORNER 13 Q

TOWNSHIP 4 S

RANGE 3 E

EAST

2ND

PRINCIPAL MERIDIAN

LOCATION	DESCRIPTION OF		DISTANCE FROM CORNER	BEARING FROM CORNER	DATE CHECKED	CHECKED BY	FIELD BOOK	REMARKS
	MONUMENT	REFERENCE						
Comm. Corner SEC 21-22 27-28	Axle w/mag hub in concrete plug over axle	Tele Ped	22.0'	N 56 E	5/09	TOB	6/38	
		8" Cherry w/sign	21.3'	N 44 W				
		12" Maple	68.5'	S 36 E				

13-Q

CORNERS RECOVERED CONTINUED

Q-9 SECTION CORNER TO SECTIONS 20, 21, 28 & 29, T-4-S, R-3-E, CONTINUED
THE STONE WAS REPLACED WITH A #5 BY 30" PIN WITH 3/4" ALUMINUM CAP STAMPED TO DEPICTED THE CORNER POSITION. THE POSITION OF THE SPC IS SUPPORTED BY MEASUREMENTS TO ADJACENT CORNERS AND VERY OLD AND DISTINCT CULTURAL FEATURES IN THE VICINITY. ACCESSORIES ESTABLISHED:

- CARSONITE POST, NORTH, 0.6'
- W. OAK 37", N4°E, 35.0'
- B. OAK 13", S23°E, 39.0', MAG NAIL 1' UP IN W SIDE
- FENCE BRACE POST W/SIGN, WEST, 0.5'

Q-11 QUARTER CORNER TO SECTIONS 21 & 28, T-4-S, R-3-E
RECOVERED #4 SPC, LS131, PROJECTING 1'. THE MONUMENT IS AT AN OLD DOWN FENCE CORNER POST. THE CORNER IS SHOWN ON THE 1995 SURVEY BY LS131, SEE SURVEY BOOK 2, PAGE 254, BUT NO MONUMENT IS DEPICTED. THE 2007 SURVEY BY LS365 CALLS FOR #5 SPC, PROJECTING 10" AND HCSM. NO REFERENCE FOR THE CORNER WAS PROVIDED BY THE COUNTY SURVEYOR AND NO RECORDED SURVEY WAS DISCOVERED DURING RESEARCH FOR THIS SURVEY. WE USED THE AUDITOR'S FILES FOR A COPIES OF LS365 SURVEYS. THE POSITION OF THE SPC IS SUPPORTED BY MEASUREMENTS TO ADJACENT CORNERS AND VERY OLD AND DISTINCT CULTURAL FEATURES IN THE VICINITY. ACCESSORIES ESTABLISHED:

- CARSONITE POST, SOUTH, 0.5'
- HACKBERRY 18", N18°E, 4.6', MAG NAIL 1' UP ON E SIDE
- WALNUT 8", S27°E, 6.6', MAG NAIL 1' UP ON W SIDE
- SUGAR 10" W/SIGN, N77°W, 11.6', MAG NAIL 1' UP ON S SIDE

Q-13 SECTION CORNER TO SECTIONS 21, 22, 27 & 28, T-4-S, R-3-E
RECOVERED AN AXLE 0.7' DEEP IN HEIDELBERG ROAD, 8' EAST OF THE WEST. THE POSITION OF THIS CORNER IS SUPPORTED BY MEASUREMENTS TO ADJACENT CORNERS AND VERY OLD AND DISTINCT CULTURAL FEATURES IN THE VICINITY. SEE SURVEYS RECORDED IN SURVEY BOOK 4, PAGE 28 AND INSTRUMENT NUMBERS 200503223, 200603719 & 200700670. A MAG HUB WAS SET IN A CONCRETE PLUG OVER THE MONUMENT. ACCESSORIES ESTABLISHED:

- TELEPHONE PEDESTAL, N56°E, 22.0'
- CHERRY 8" W/SIGN, N44°W, 21.3' MAG NAIL 1' UP ON SW SIDE
- MAPLE 12", S36°E, 68.5'

S-5 QUARTER CORNER TO SECTIONS 29 & 30, T-4-S, R-3-E
CORNER "R" PER 2002 DNR SURVEY WHICH IS ATTACHED HERETO AND MADE A PART HEREOF AS EXHIBIT "G". SEE EXHIBIT "G" FOR ACCESSORIES.

CORNERS RESTORED

I-5 SECTION CORNER TO SECTIONS 7, 8, 17 & 18, T-4-S, R-3-E
RESTORED CORNER POSITION PER CHAPTERS V & VI OF "THE MANUAL OF SURVEYING INSTRUCTIONS". RESTORED CORNER POSITION ON LINE AT PROPORTIONAL DISTANCE BETWEEN VERIFIABLE STONES RECOVERED TO THE EAST & WEST (SEE I-3 & I-7 ABOVE).

SURVEY FOR:
THOMAS O. BUBE
HARRISON COUNTY SURVEYOR
300 N. CAPITOL AVENUE
CORYDON, IN 47112

SURVEY BY:
MCCAULEY & COMPANY, INC., P.S.C.
PROFESSIONAL LAND SURVEYORS
P.O. BOX 39
ELIZABETH, IN 47117-0039
812-969-2186
E-mail mccauleypsc@verizon.net

JOB 10809

Point No. 99

13-Q

Harrison Co. No. Q-13

T 4 S R 3 E 2nd Mer. County Harrison State Indiana

Section Corner common to Sections 21 and 22, 27 & 28

EXISTING SURVEYS

Original Government Survey	Original Evidence Found
Year surveyed <u>1805</u> Original monument <u>Wood Post</u> <small>(wood post, stone, pile of stones, etc.)</small> <hr/> Bearing Trees Species _____ Diameter _____ Bearing _____ Distance _____	Year of search <u>N/A</u> By _____ Monument found _____ <hr/> Original Bearing Trees Found Species _____ Diameter _____ Bearing _____ Distance _____
Subsequent Corner Restoration	Evidence of Subsequent Corner Restoration Found
Year surveyed <u>N/A</u> By <u>Harrison Co. Surveyor</u> Where filed or recorded _____ Monument _____ <small>(Original, concrete post, iron rod, etc...)</small> <hr/> Bearing Trees, Reference Objects Species _____ Diameter _____ Bearing _____ Distance _____	Year of search <u>1998</u> By <u>VHM</u> <u>Long time local resident, Owen Toler, lead me to corner position. Recovered axle in road at old fence to the West.</u>



Relation of Evidence to Record Features Along Section Lines

Section line to sections _____
 Object _____
 Record Distance _____
 Measured Distance _____

Other Evidence

Describe evidence of use and occupation such as roads, fences, clearings, timber cutting lines, plantations, etc... Cite source of testimony, if any. See surveys in the Harrison County Surveyor's files

Perpetuation Record

Monument and accessories established. Include brief description of area. Set mag hub in concrete plug over axle.

Tele. Ped.	Cherry W/sign	Maple
	8"	12"
N 56° E	N 44° W	S 36° E
22.0'	21.3'	68.5'
	MN + 1.0'	
	SW. Side	

At time of search:

1. Did you have the record description? Yes X No _____
2. How was search area located? pacing, chaining, photo, maps, etc. SURVEYING
3. Man hours spent in search N/A
4. Do you think additional search might recover evidence? Yes _____ No X
5. Signature Vik Horn

Certified corner restoration certificate prepared Yes _____ No X
 Filed in county records at _____ Date _____ County No. _____
 Identified on aerial photo No. _____ Which is filed at _____

13-Q

HARRISON COUNTY SURVEYOR ^{6/38}
CORNER MONUMENT RECOVERY & REFERENCE RECORD

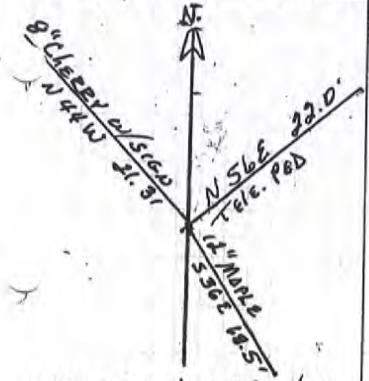
TWNSHIP 4 RANGE 3 SECTION 26 CORNER REF. LD. 13-Q
DATE: 5 / 1 / 09

MONUMENT INFORMATION

LOCATION: COMMON CORNER to SEC. 21-22-27-28
DESCRIPTION: MAG Hub in CONCRETE PLUG OVER AXLE
ADDITIONAL DISTINGUISHING CHARACTERISTICS: _____
SIGN PLACED: () YES DATE: / /

WITNESS MARKERS

TYPE	SIGN	BLAZE	ADDITION DESCRIPTION
1. TELE. PEB	()	()	N 56 E 20.0'
2. 8" CHERRY	(X)	()	N 44 W 21.3'
3. 12" MAPLE	()	()	S 36 E 68.5'



	1	2	3	4	5	6	7	8	9	10	11	12	13	14	15	16	17	18	19	20	21	22	23	24
A	1	2	3	4	5	6	7	8	9	10	11	12	13	14	15	16	17	18	19	20	21	22	23	24
B	1	2	3	4	5	6	7	8	9	10	11	12	13	14	15	16	17	18	19	20	21	22	23	24
C	1	2	3	4	5	6	7	8	9	10	11	12	13	14	15	16	17	18	19	20	21	22	23	24
D	1	2	3	4	5	6	7	8	9	10	11	12	13	14	15	16	17	18	19	20	21	22	23	24
E	1	2	3	4	5	6	7	8	9	10	11	12	13	14	15	16	17	18	19	20	21	22	23	24
F	1	2	3	4	5	6	7	8	9	10	11	12	13	14	15	16	17	18	19	20	21	22	23	24
G	1	2	3	4	5	6	7	8	9	10	11	12	13	14	15	16	17	18	19	20	21	22	23	24
H	1	2	3	4	5	6	7	8	9	10	11	12	13	14	15	16	17	18	19	20	21	22	23	24
I	1	2	3	4	5	6	7	8	9	10	11	12	13	14	15	16	17	18	19	20	21	22	23	24
J	1	2	3	4	5	6	7	8	9	10	11	12	13	14	15	16	17	18	19	20	21	22	23	24
K	1	2	3	4	5	6	7	8	9	10	11	12	13	14	15	16	17	18	19	20	21	22	23	24
L	1	2	3	4	5	6	7	8	9	10	11	12	13	14	15	16	17	18	19	20	21	22	23	24
M	1	2	3	4	5	6	7	8	9	10	11	12	13	14	15	16	17	18	19	20	21	22	23	24
N	1	2	3	4	5	6	7	8	9	10	11	12	13	14	15	16	17	18	19	20	21	22	23	24
O	1	2	3	4	5	6	7	8	9	10	11	12	13	14	15	16	17	18	19	20	21	22	23	24
P	1	2	3	4	5	6	7	8	9	10	11	12	13	14	15	16	17	18	19	20	21	22	23	24
Q	1	2	3	4	5	6	7	8	9	10	11	12	13	14	15	16	17	18	19	20	21	22	23	24
R	1	2	3	4	5	6	7	8	9	10	11	12	13	14	15	16	17	18	19	20	21	22	23	24
S	1	2	3	4	5	6	7	8	9	10	11	12	13	14	15	16	17	18	19	20	21	22	23	24
T	1	2	3	4	5	6	7	8	9	10	11	12	13	14	15	16	17	18	19	20	21	22	23	24
U	1	2	3	4	5	6	7	8	9	10	11	12	13	14	15	16	17	18	19	20	21	22	23	24
V	1	2	3	4	5	6	7	8	9	10	11	12	13	14	15	16	17	18	19	20	21	22	23	24
W	1	2	3	4	5	6	7	8	9	10	11	12	13	14	15	16	17	18	19	20	21	22	23	24
X	1	2	3	4	5	6	7	8	9	10	11	12	13	14	15	16	17	18	19	20	21	22	23	24
Y	1	2	3	4	5	6	7	8	9	10	11	12	13	14	15	16	17	18	19	20	21	22	23	24
Z	1	2	3	4	5	6	7	8	9	10	11	12	13	14	15	16	17	18	19	20	21	22	23	24

COVERED BY: V. McCawley DATE: 5 / 1 / 09
REFERENCED BY: TOB DATE: 7 / 23 / 09
CORDED IN PERPETUATION RECORDS BOOK: Thomas O. Bube DATE: 7 / 27 / 09

HARRISON

COUNTY

13-U

CORNER 13-U

TOWNSHIP 4

RANGE 3

EAST

2ND

PRINCIPAL MERIDIAN

LOCATION	DESCRIPTION OF		DISTANCE FROM CORNER	BEARING FROM CORNER	DATE CHECKED	CHECKED BY	FIELD BOOK	REMARKS
	MONUMENT	REFERENCE						
N.E. CORNER SECTION 33	#4 REBAR	FENCE CORNER	8.05	SOUTH	9-27-94	T.B.	#4Pg51	SIGN PLACED
		ELECT. POLE	15.35	N82-34-0W				SIGN PLACED
		0.40' ØSASS.	1.35up	SOUTH				SIGN PLACED

13-U

0.40 Sassafras, nail on N
South side + 1.35 up.

Elect. Pole has a witness sign
Elect. Pole, nail on
South side + 1.5 up.

N82-34-0W 15.35

The Tree has a blaze
with a alluminum in
middle. The Tree has
a witness sign. The
Fence cor has a sign
nailed on it.

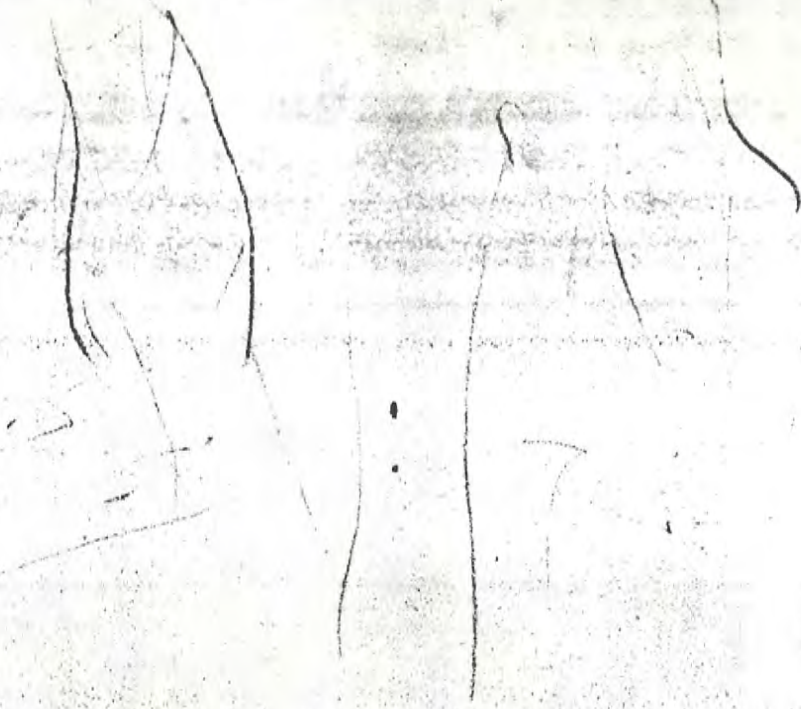
Party Chief T. Brown
Head Chain R. Mills
Rear Chain D. Fowler

NE Cor Sect 33
T 45 R 3 E

#4 rebar DATE 9-27-94
Fence cor.

SOUTH 8.05

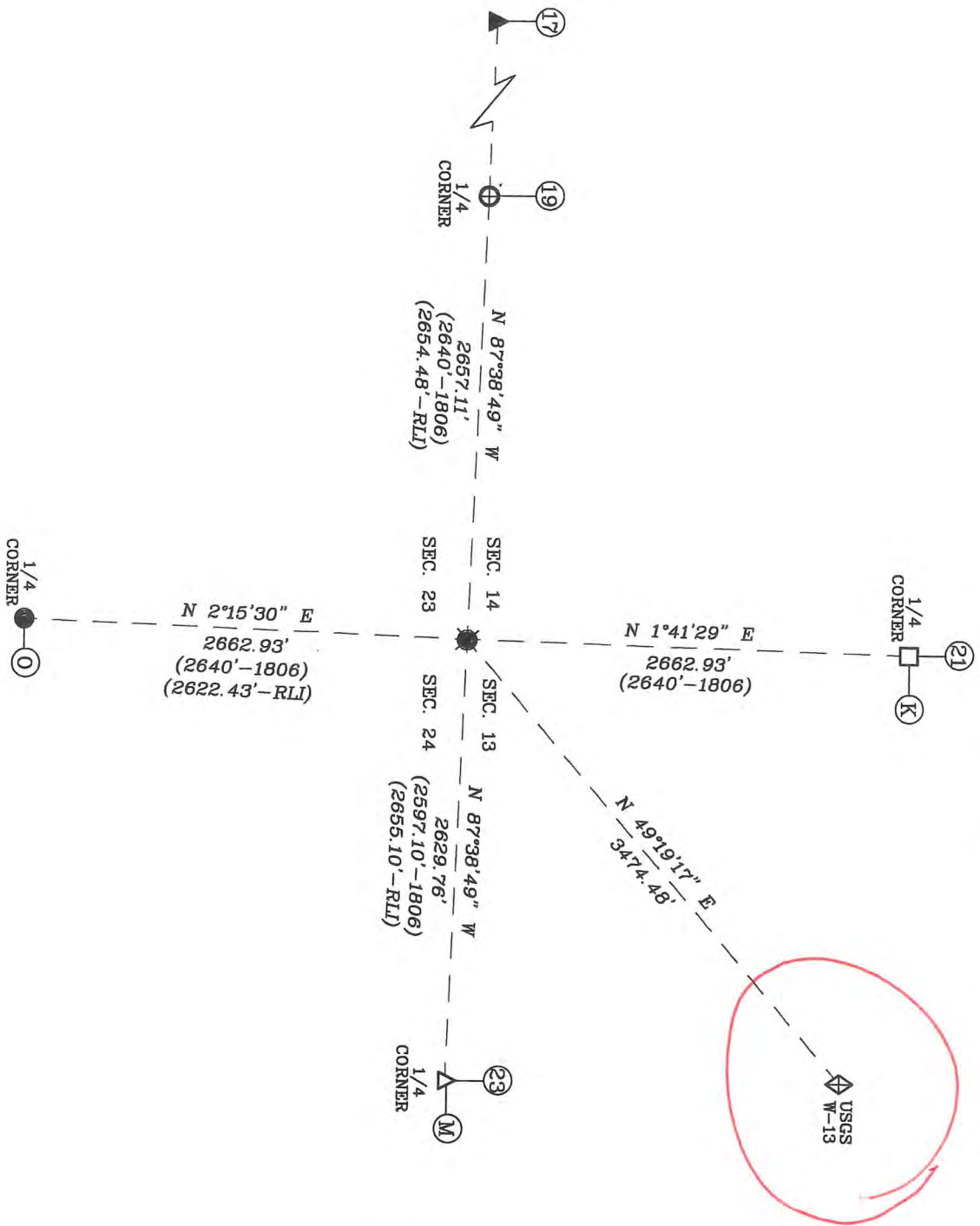
Fence post, nail on
west side + 1.3 up. Post
has a witness sign



SECTIONS 13, 14, 23 & 24,
TOWNSHIP 4 SOUTH, RANGE 3 EAST,
HARRISON TOWNSHIP,
HARRISON COUNTY, INDIANA

13-10
MARB

FOR RECORDING INFORMATION



SURVEYOR'S CERTIFICATE

I, VICTOR H. MCCAULEY, PROFESSIONAL LAND SURVEYOR, REGISTERED BY THE LAWS OF THE STATE OF INDIANA, HEREBY DECLARE THAT I HAVE RESTORED AND PERPETUATED THE SECTION CORNER COMMON TO SECTIONS 13, 14, 23 & 24, TOWNSHIP 4 SOUTH, RANGE 3 EAST, HARRISON TOWNSHIP, HARRISON COUNTY, INDIANA IN ACCORDANCE WITH IAC, TITLE 865, THE RULES FOR SURVEYS OF PUBLIC LANDS AND THE STATUTES OF THE STATE OF INDIANA, ALL TO THE BEST OF MY KNOWLEDGE AND BELIEF.

VICTOR H. MCCAULEY
V. H. M.

VICTOR H. MCCAULEY, INDIANA LS# 50336
 DATE OF SURVEY: DEC. 26, 2012
 LAST DATE OF FIELD WORK: DEC. 13, 2012

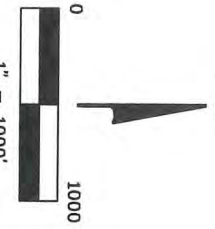
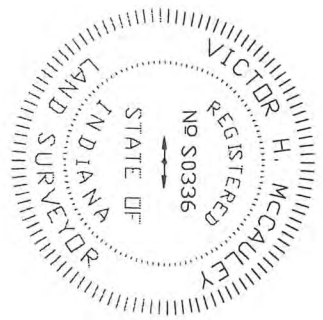
DECLARATION

I, affirm under the penalties of perjury, that I have taken responsible care to redact each Social Security number in this document, unless required by law.

DECLARANT

Signature of Declarant
V. H. M.

Printed Name of Declarant
 VICTOR H. MCCAULEY



GRD NORTH PER INDIANA STATE PLANE COORDINATE SYSTEM, EAST ZONE, 1983 (2012) DATUM, PER G.P.S. OBSERVATION.

LEGEND

- HISTORICAL STONE (SEE REPORT)
- ⊕ EXISTING MAG HUB IN CONC. PLUG (SEE REPORT)
- REFERENCE MONUMENT SET STEEL PIN W/3/4" ALUM. DISC STAMPED TO DEPICT CORNER POSITION (SEE REPORT)
- EXISTING STEEL PIN (SEE REPORT)
- EXISTING MAG NAIL (SEE REPORT)
- ▲ EXISTING RAILROAD SPIKE (SEE REPORT)
- 1806 1806 ORIGINAL SURVEY MEASUREMENTS
- RLI ROBERT L. ISGRIGG I.S. 366
- ⊕ USGS W-13 N: 1062336.03 E: 192551.02
- (N) HARRISON COUNTY REFERENCE INDEX NUMBER

THIS SURVEY IS BASED ON THE INDIANA STATE PLANE COORDINATE SYSTEM, EAST ZONE, 1983 (2012) ADJUSTMENT U.S. SURVEY FOOT. THE DISTANCES SHOWN ARE SEA GRD DISTANCES BASED ON COMBINED SCALE FACTOR OF 0.99996222. TO CONVERT THE SURVEY DISTANCES TO HORIZONTAL GROUND LEVEL DISTANCES DIVIDES THE SURVEY DISTANCES BY THE SCALE FACTOR.

FOR A MORE COMPLETE DESCRIPTION OF EACH CORNER, SEE THE LAND CORNER RECORD CARD ON FILE WITH THE HARRISON COUNTY SURVEYOR. THIS SURVEY IS NOT COMPLETE WITHOUT THE SURVEY PLAT AND SURVEYOR'S REPORT.

MCCAULEY & COMPANY, P.S.C.
 PROFESSIONAL LAND SURVEYORS
 P.O. BOX 39
 ELIZABETH, IN 47117-0039
 TELEPHONE: 812-969-2186
 mccauleypsc@frontier.com

FOR: HARRISON COUNTY SURVEYOR
 HAROLD KINSTIVER
 245 ATWOOD STREET, SUITE 219
 CORYDON, IN 47112

PLAT OF SURVEY
2012 HARRISON COUNTY PERPETUATION PROJECT

SITUATED IN SECTIONS 13, 14, 23 & 24, TOWNSHIP 4 SOUTH, RANGE 3 EAST, HARRISON TOWNSHIP,
HARRISON COUNTY, INDIANA.

REPORT OF SURVEY

WJ-13

THIS SURVEY WAS PERFORMED FOR HAROLD KLINTSTVER, HARRISON COUNTY SURVEYOR AS A PERPETUATION PROJECT FOR THE SECTION CORNER TO SECTIONS 13, 14, 23 & 24, TOWNSHIP 4 SOUTH, RANGE 3 EAST, HARRISON TOWNSHIP, HARRISON COUNTY, INDIANA. THIS SURVEY IS A CONTINUATION OF SEVERAL PRIOR SURVEYS, IN THE SAME VICINITY, BY THIS FIRM.

THE ORIGINAL GOVERNMENT SURVEYS WERE CONDUCTED BY JOSEPH H. SARWELL, DEPUTY SURVEYOR IN JANUARY OF 1806. SUBSEQUENT SURVEYS WERE PERFORMED BY HARRISON COUNTY SURVEYORS AND PRIVATE SURVEYORS AS CITED BELOW. THE ORIGINAL AND SUBSEQUENT SURVEY NOTES ARE ON FILE IN THE HARRISON COUNTY SURVEYOR'S OFFICE.

PRIOR TO PERFORMING THIS SURVEY, I REVIEWED THE AVAILABLE ORIGINAL, SUBSEQUENT AND PRIVATE SURVEY NOTES. I RESEARCHED PERTINENT DEEDS AND ADJOINING DEEDS. I CONTACTED ADJOINING LAND OWNERS, CONSULTED WITH THE HARRISON COUNTY SURVEYOR AND OTHER LOCAL SURVEYORS FOR INFORMATION PERTAINING TO THE LOCATION OF CORNERS NEEDED TO PERFORM THIS SURVEY.

THE CORNER RECOVERED AND PERPETUATED BY THIS SURVEY IS MARKED IN THE LEGEND. THE BEARING BETWEEN MONUMENTS IS GRID NORTH AS DETERMINED BY GPS SURVEYS.

HORIZONTAL AND VERTICAL CONTROLS FOR THIS SURVEY ARE BASED ON STATIC AND RTK GPS METHODS AND COORDINATES WERE CONSTRAINED TO AN NGS OPUS SOLUTION POSITION, INDIANA STATE PLANE COORDINATE SYSTEM, EAST ZONE, 1983 (2012) DATUM, FOR AN ON-SITE GPS BASE STATION. THIS IS A RETRACEMENT "RURAL CLASS SURVEY" AS DEFINED BY 865 IAC 1-12 SECTION 7, PARAGRAPH 3 (e-3) AND THE FIELD WORK IS WITHIN THE "RELATIVE POSITIONAL ACCURACY" SPECIFICATIONS CITED THEREIN.

CONVENTIONAL TERRESTRIAL TRAVERSES WERE USED TO DETERMINE CORNER POSITIONS THAT WERE DEEMED UNSUITABLE FOR GPS OBSERVATIONS. THE POSITION OF MONUMENTS WAS VERIFIED WITH REDUNDANT MEASUREMENTS. ALL TRAVERSES WERE EITHER CLOSED TRAVERSES OR WERE CONTROLLED BY GPS SURVEY METHODS

THIS SURVEY IS BASED ON THE INDIANA STATE PLANE COORDINATE SYSTEM, EAST ZONE, 1983 (2012) DATUM, U.S. SURVEY FOOT. THE DISTANCES SHOWN ARE SEA LEVEL GRID DISTANCES, BASED ON A COMBINED SCALE FACTOR OF 0.99996222. TO CONVERT SURVEY DISTANCES TO HORIZONTAL GROUND LEVEL DISTANCES, DIVIDE THE SURVEY DISTANCES BY THE SCALE FACTOR

EXISTING MONUMENTS RECOVERED DURING PRIOR SURVEYS

K-21 QUARTER CORNER TO SECTIONS 13 & 14, T-4-S, R-3-E

RECOVERED FIELD STONE ORIENTED IN CARDINAL DIRECTIONS AND IN E-W FENCE LINE. THE STONE IS AT A VERY OLD AND PROMINENT CULTURAL INTERSECTION. THE POSITION OF THE CORNER IS SUPPORTED BY MEASUREMENTS TO ADJACENT MONUMENTS IN ALL CARDINAL DIRECTIONS AND BY VERY OLD AND DISTINCT CULTURAL FEATURES IN THE VICINITY. SEE SURVEY RECORDED AS INSTRUMENT #201103259. CORNER ACCESSORIES ESTABLISHED IN 2011.

SET CARSONITE POST ON THE SOUTH FACE OF THE STONE
SUGAR 30", S75°E, 7.7' W/HARRISON COUNTY SURVEYOR'S SIGN

M-17 CORNER TO SECTIONS 14, 15, 22 & 23, T-4-S, R-3-E

RECOVERED MAGNETIC READINGS IN FAIRVIEW CHURCH ROAD PER PRIOR SURVEYS. SEE SURVEY BOOK 5, PAGE 63 AND INSTRUMENTS #200503223 & 201103259.

M-19 QUARTER CORNER TO SECTIONS 14 & 23, T-4-S, R-3-E

RECOVERED MAG HUB IN A CONCRETE PLUG IN FAIRVIEW CHURCH ROAD AS PERPETUATED DURING PRIOR SURVEYS. SEE SURVEYS RECORDED IN SURVEY BOOK 4, PAGE 121, SURVEY BOOK 5, PAGE 63 AND INSTRUMENT #201103259. THE MONUMENT IS AT A VERY OLD AND PROMINENT CULTURAL INTERSECTION. THE POSITION OF THE CORNER IS SUPPORTED BY MEASUREMENTS TO ADJACENT MONUMENTS IN ALL CARDINAL DIRECTIONS AND BY VERY OLD AND DISTINCT CULTURAL FEATURES IN THE VICINITY.

M-21 QUARTER CORNER TO SECTIONS 13 & 24, T-4-S, R-3-E

RECOVERED MAG NAIL 0.3' DEEP IN UNION CHAPEL ROAD. THE MONUMENT IS AT A VERY OLD AND PROMINENT CULTURAL INTERSECTION. THE POSITION OF THE CORNER IS SUPPORTED BY MEASUREMENTS TO ADJACENT MONUMENTS IN ALL CARDINAL DIRECTIONS AND BY VERY OLD AND DISTINCT CULTURAL FEATURES IN THE VICINITY

PLAT OF SURVEY
2012 HARRISON COUNTY PERPETUATION PROJECT

W-13

SITUATED IN SECTIONS 13, 14, 23 & 24, TOWNSHIP 4 SOUTH, RANGE 3 EAST, HARRISON TOWNSHIP,
HARRISON COUNTY, INDIANA.

EXISTING MONUMENTS RECOVERED DURING PRIOR SURVEYS

0-21 QUARTER CORNER TO SECTIONS 23 & 24, T-4-S, R-3-E

RECOVERED #4 STEEL PIN DURING 1998 SURVEYS AS DEPICTED ON 1992 SURVEY OF RECORD IN SURVEY BOOK 1, PAGE 318 (ALSO SEE SURVEY BOOK 3, PAGE 644 & SURVEY BOOK 4, PAGE 310). THE MONUMENT IS AT A VERY OLD AND PROMINENT CULTURAL INTERSECTION. THE POSITION OF THE CORNER IS SUPPORTED BY MEASUREMENTS TO ADJACENT MONUMENTS IN ALL CARDINAL DIRECTIONS AND BY VERY OLD AND DISTINCT CULTURAL FEATURES IN THE VICINITY. SEE SURVEYS OF RECORD IN THE HARRISON COUNTY RECORDS.

USGS MONUMENT W-13, 1937

USGS MONUMENT ON THE WEST SIDE OF OLD HIGHWAY 135 NEAR THE SE CORNER OF JORDAN CEMETERY.

SECTION CORNER RESTORED

M-21 CORNER TO SECTIONS 13, 14, 23 & 24, T-4-S, R-3-E

RESTORED CORNER POSITION ON THE EAST-WEST SECTION LINE AT NEAR PROPORTIONAL MEASUREMENTS IN ALL CARDINAL DIRECTIONS. THE POSITION OF THE CORNER IS SUPPORTED BY MEASUREMENTS TO ADJACENT MONUMENTS IN ALL CARDINAL DIRECTIONS AND BY VERY OLD AND DISTINCT CULTURAL FEATURES IN THE VICINITY. THE CORNER POSITION FELL IN A CULTIVATED FIELD AND PRIOR TO RESTORING THE CORNER I HAD SEVERAL CONVERSATIONS WITH MR. ROBERT MATHEES AND MR. ROBERT WELMAN CONCERNING THE LOCATION OF THIS CORNER. NEITHER COULD REMEMBER A CORNER IN THE FIELD AND BOTH MEN HAVE ACCEPTED THE OLD NORTH-SOUTH FENCE LINE AS THE SECTION LINE. THERE ARE ALSO SEVERAL GENERATIONS OF SURVEYS BY ROBERT LEE ISGRIGG THAT DEPICTED THIS CORNER AS BEING A FRAGMENTED STONE. AS CITED ABOVE, MR. MATHEES HAS FARMED AND CULTIVATED THIS VICINITY FOR OVER FIFTY (50) YEARS AND COULD NOT RECALL A STONE EVERY BEING THERE. SEE COMMENTS IN THE NARRATIVE BELOW. A WITNESS MONUMENT WAS SET 44.5' WEST ALONG THE SECTION LINE FROM THE CORNER. THE WITNESS MONUMENT IS A #5 BY 30" STEEL PIN WITH A 3/4" ALUMINUM DISK STAMPED TO DEPICT THE CORNER POSITION. ACCESSORIES ESTABLISHED FOR THE WITNESS MONUMENT:
UTILITY POLE, NORTH, 90.64' TO A MAG NAIL 0.6' UP ON THE EAST SIDE
UTILITY POLE W/TRANSFORMER, N39°W, 102.87' TO A MAG NAIL 0.6' UP ON THE NORTHEAST SIDE
UTILITY POLE, S2°W, 65.45' TO A MAG NAIL UP 0.6' ON THE EAST SIDE
SUGAR 22", S84°W, 62.94'
"T" FENCE POST W/HARRISON COUNTY SURVEY SIGN, S38°W, 4.0'
RLI-SPC, N89°7'31"W, 715.65'
RLI-SPC, S85°01'30"E, 706.57'

NARRATIVE

I HAVE VISITED THIS CORNER POSITION SEVERAL TIMES IN THE PAST FIFTEEN (15) YEARS AND SPOKE WITH MR. ROBERT MATHEES DURING SEVERAL PRIOR SURVEYS PERFORMED BY ME IN THIS VICINITY.

AS STATED ABOVE SURVEYOR ISGRIGG CALLS FOR A FRAGMENTED STONE FOR THIS CORNER. I MADE A THROUGH AND EXHAUSTIVE SEARCH FOR THE FRAGMENTED STONE WITH NO LUCK, HOWEVER I DID RECOVER EIGHT (8) MONUMENTS CITED BY SURVEYOR ISGRIGG AND ATTEMPTED TO RECONCILE THE SURVEY PLAT AND DEED DIMENSIONS WITH THE DISTANCES MEASURED BETWEEN THE RECOVERED MONUMENTS TO NO AVAIL. IN MY OPINION THE ISGRIGG SURVEY CONTAINS SEVERAL DIMENSIONING BLUNDERS. ALSO, THE ISGRIGG SURVEY PLAT CONTAINS SEVERAL DISCREPANCIES WHERE CALLS ARE MADE FOR "NO MONUMENT FOUND" ON CORNERS M-19 & O-21. I HAD VISITED BOTH CORNERS PRIOR TO THE 2000 ISGRIGG SURVEY AND RECOVERED MONUMENTS PER THE COUNTY RECORDS ON BOTH CORNERS AND FURTHERMORE, SURVEYOR ISGRIGG CITES A STONE ON THE SE CORNER OF SECTION 23, I VISITED THAT CORNER IN SEPTEMBER AND OCTOBER OF 1998 AND NO SURVEY STONE EXISTED DURING MY VISITS AND PRIMAVERA VISITED THE CORNER IN 2002 AND DID NOT RECOVER A STONE EITHER. THE ISGRIGG SURVEY PLAT ALSO DEPICTS SEVERAL OTHER EXISTING CORNER MONUMENTS THAT WERE NOT HONORED. THESE EXISTING MONUMENTS ARE NEARLY IN COINCIDENCE WITH THE CORNER I RESTORED, ELIMINATING THE OVERLAPS AND GAPS CITED BY SURVEYOR ISGRIGG.

THEFORE I RESTORED THE CORNER POSITION PER "THE CHIEF JUSTICE COOLEY DOCTRINE" BY NOT DISRUPTION THE FREE HOLDINGS OR PERPETUATING THE DISCREPANCIES IN THE ISGRIGG SURVEY.

FOR ADDITIONAL CORNER INFORMATION, SEE THE INDIVIDUAL CORNER RECORDS IN THE HARRISON COUNTY SURVEYORS OFFICE.

THIS REPORT OF SURVEY IS NOT COMPLETE WITHOUT THE SURVEY PLAT.

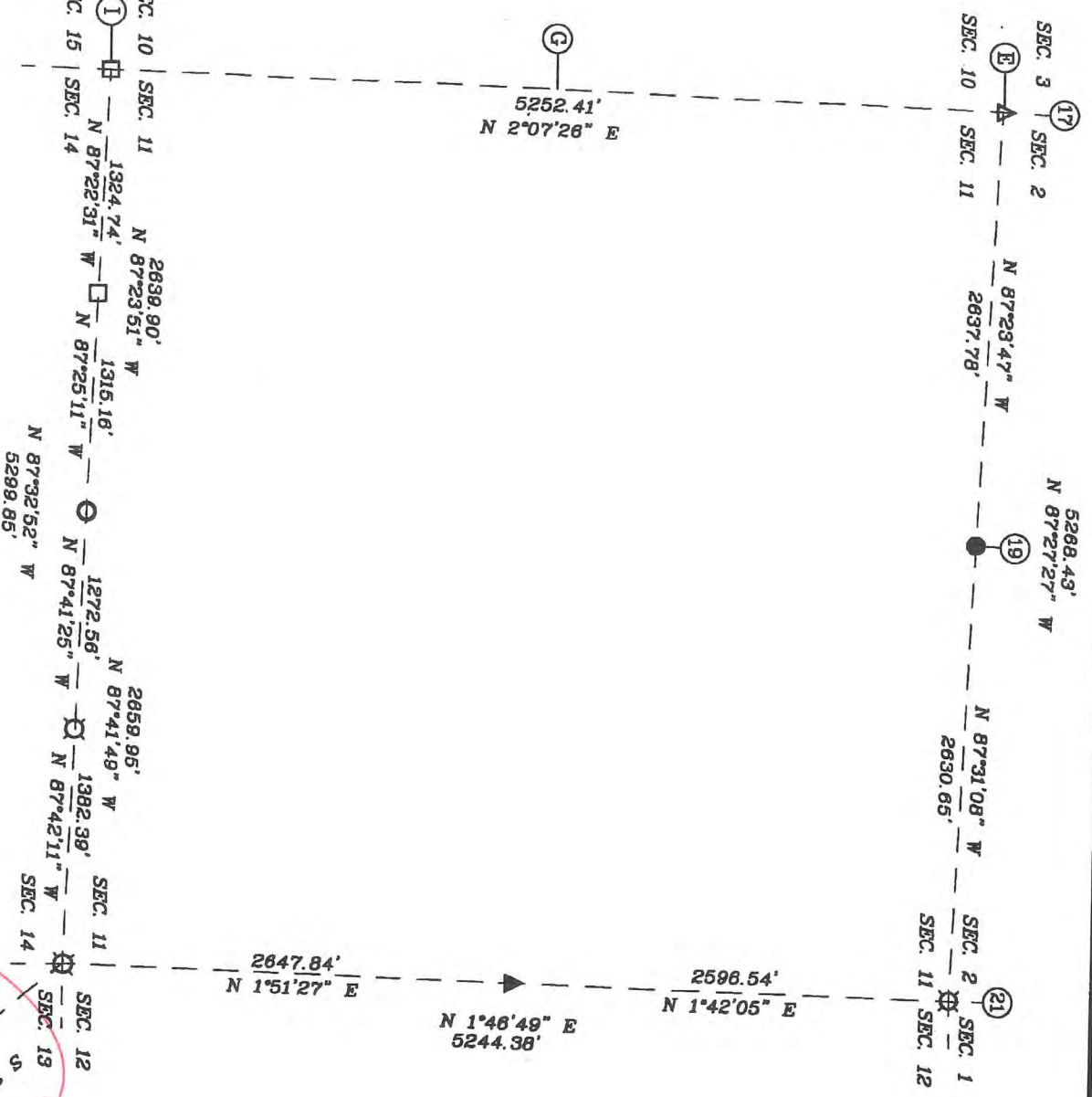
13-10
 ODD FIVE

SECTION 11,
 TOWNSHIP 4 SOUTH, RANGE 3 EAST,
 HARRISON TOWNSHIP,
 HARRISON COUNTY, INDIANA

INST # 201206847
 BARBARA BEST
 HARRISON COUNTY RECORDER
 12/20/2012 3:14 PM
 PAGE 1 OF 4



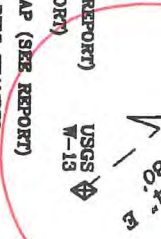
FOR RECORDING INFORMATION



VICTOR H. MCCAULEY
 REGISTERED
 NO S0336
 STATE OF INDIANA
 LAND SURVEYOR

LEGEND

- HISTORICAL STONE (SEE REPORT)
- EXISTING PIPE (SEE REPORT)
- EXISTING STEEL PIN W/ CAP (SEE REPORT)
- STEEL PIN W/ 3/4" ALUM DISC STAMPED TO DEPICT CORNER POSITION (SEE REPORT)
- EXISTING STEEL PIN (SEE REPORT)
- EXISTING MAG NAIL (SEE REPORT)
- EXISTING RAILROAD SPIKE (SEE REPORT)
- USGS W-13 N: 1082398.03 E: 182551.02
- HARRISON COUNTY REFERENCE INDEX NUMBER



SURVEYOR'S CERTIFICATE
 I, VICTOR H. MCCAULEY, PROFESSIONAL LAND SURVEYOR, REGISTERED BY THE LAWS OF THE STATE OF INDIANA, HEREBY DECLARE THAT I HAVE RECOVERED, RESTORED AND PERPETUATED THE CORNERS SHOWN HERON IN SECTION 11, TOWNSHIP 4, SOUTH, RANGE 3 EAST, HARRISON TOWNSHIP, HARRISON COUNTY, INDIANA IN ACCORDANCE WITH IAC TITLE 865, THE RULES FOR SURVEYS OF PUBLIC LANDS AND THE STATUTES OF THE STATE OF INDIANA, ALL TO THE BEST OF MY KNOWLEDGE AND BELIEF.

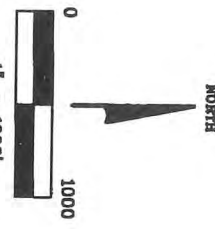
VICTOR H. MCCAULEY, INDIANA 154 S08396
 DATE OF SURVEY: NOV. 30, 2012
 LAST DATE OF FIELD WORK: NOV. 22, 2012

DECLARATION

I, affirm under the penalties of perjury, that I have taken reasonable care to redact, each Social Security number in this document, unless required by law.

Signature of Declarant
 VICTOR H. MCCAULEY

GRD NORTH PER INDIANA STATE PLANE COORDINATE SYSTEM, EAST ZONE, 1983 (2012) DATUM, PER G.P.S. OBSERVATION.



MCCAULEY & COMPANY, INC., P.S.C.
 PROFESSIONAL LAND SURVEYORS
 P.O. BOX 39
 ELIZABETH, IN 47117-0039
 TELEPHONE: 812-969-2188
 mccauleyjac@frontier.com

FOR: HARRISON COUNTY SURVEYOR
 HAROLD KLINSTIVER
 245 ATWOOD STREET, SUITE 219
 CORYDON, IN 47112

PLAT OF SURVEY
2012 HARRISON COUNTY PERPETUATION PROJECT

WJ-13

SITUATED IN SECTION 11, TOWNSHIP 4 SOUTH, RANGE 3 EAST, HARRISON TOWNSHIP, HARRISON,
INDIANA.

REPORT OF SURVEY

THIS SURVEY WAS PERFORMED FOR HAROLD KLINSTYVER, HARRISON COUNTY SURVEYOR AS A PERPETUATION PROJECT FOR THE CORNERS IN SECTION 11, TOWNSHIP 4 SOUTH, RANGE 3 EAST, HARRISON TOWNSHIP, HARRISON, INDIANA. THIS SURVEY IS A CONTINUATION OF SEVERAL PRIOR SURVEYS, IN THE SAME VICINITY, BY THIS FIRM.

THE ORIGINAL GOVERNMENT SURVEYS WERE CONDUCTED BY JOSEPH H. SARWELL, DEPUTY SURVEYOR IN JANUARY OF 1806. SUBSEQUENT SURVEYS WERE PERFORMED BY HARRISON COUNTY SURVEYORS AND PRIVATE SURVEYORS AS CITED BELOW. THE ORIGINAL AND SUBSEQUENT SURVEYOR NOTES ARE ON FILE IN THE HARRISON COUNTY SURVEYOR'S OFFICE.

PRIOR TO PERFORMING THIS SURVEY, I REVIEWED THE AVAILABLE ORIGINAL, SUBSEQUENT AND PRIVATE SURVEY NOTES. I RESEARCHED PERTINENT DEEDS AND ADJOINING DEEDS. I CONTACTED ADJOINING LAND OWNERS, CONSULTED WITH THE HARRISON COUNTY SURVEYOR AND OTHER LOCAL SURVEYORS FOR INFORMATION PERTAINING TO THE LOCATION OF CORNERS NEEDED TO PERFORM THIS SURVEY.

THE CORNERS RECOVERED, RESTORED AND PERPETUATED BY THIS SURVEY ARE MARKED IN THE LEGEND. THE BEARING BETWEEN MONUMENTS IS GRID NORTH AS DETERMINED BY GPS SURVEYS.

HORIZONTAL AND VERTICAL CONTROLS FOR THIS SURVEY ARE BASED ON STATIC AND RTK GPS METHODS AND COORDINATES WERE CONSTRAINED TO AN NGS OPUS SOLUTION POSITION, INDIANA STATE PLANE COORDINATE SYSTEM, EAST ZONE, 1983 (2012) DATUM, FOR AN ON-SITE GPS BASE STATION. THIS IS A RETRACEMENT "RURAL CLASS SURVEY" AS DEFINED BY 865 IAC 1-12 SECTION 7, PARAGRAPH 3 (e-3) AND THE FIELD WORK IS WITHIN THE "RELATIVE POSITIONAL ACCURACY" SPECIFICATIONS CITED THEREIN.

CONVENTIONAL TERRESTRIAL TRAVERSES WERE USED TO DETERMINE CORNER POSITIONS THAT WERE DEEMED UNSUITABLE FOR GPS OBSERVATIONS. THE POSITION OF MONUMENTS WAS VERIFIED WITH REDUNDANT MEASUREMENTS. ALL TRAVERSES WERE EITHER CLOSED TRAVERSES OR WERE CONTROLLED BY GPS SURVEY METHODS

THIS SURVEY IS BASED ON THE INDIANA STATE PLANE COORDINATE SYSTEM, EAST ZONE, 1983 (2012) DATUM, U.S. SURVEY FOOT. THE DISTANCES SHOWN ARE SEA LEVEL GRID DISTANCES, BASED ON A COMBINED SCALE FACTOR OF 0.99996222. TO CONVERT SURVEY DISTANCES TO HORIZONTAL GROUND LEVEL DISTANCES, DIVIDE THE SURVEY DISTANCES BY THE SCALE FACTOR

EXISTING MONUMENTS RECOVERED

E-17 SECTION CORNER COMMON TO SECTIONS 2, 3, 10 & 11, T-4-S, R-3-E

RECOVERED MAG HUB SET IN CONCRETE PLUG IN THE INTERSECTION OF STEAM ENGINE ROAD AND MATHES ROAD. THE MONUMENT IS AT A VERY OLD AND PROMINENT CULTURAL INTERSECTION. THE POSITION OF THE CORNER IS SUPPORTED BY MEASUREMENTS TO ADJACENT MONUMENTS IN ALL CARDINAL DIRECTIONS AND BY VERY OLD AND DISTINCT CULTURAL FEATURES IN THE VICINITY. CORNER ACCESSORIES ESTABLISHED:

HACKBERRY 11", S66°E, 22.10' TO A MAG NAIL 1.1' UP ON SW SIDE
TEL PED, N78°W, 66.43'
SUGAR 31", N41°W, 32.7'
STOP SIGN POST, N30°W, 18.69' W/HCSS

E-21 SECTION CORNER TO SECTIONS 1, 2, 11 & 12, T-4-S, R-3-E

RECOVERED #4 SPC-LS131 ON THE NORTH SIDE OF A FENCE CORNER POST. THE PIN PROJECTS 0.2' AND IS AT THE CORNER BETWEEN FIELDS. THE MONUMENT WAS LEFT IN PLACE AS RECOVERED. THIS CORNER HAS A LONG LINAGE AND HAS BEEN USED BY LOCAL SURVEYORS AS THE SECTION CORNER. THE POSITION OF THE CORNER IS SUPPORTED BY MEASUREMENTS TO ADJACENT MONUMENTS IN ALL CARDINAL DIRECTIONS AND BY VERY OLD AND DISTINCT CULTURAL FEATURES IN THE VICINITY. CORNER ACCESSORIES ESTABLISHED:

STONE, S2° 28' 45" W, 88.28'
ELM 12", N58°E, 1.28' TO A MAG NAIL 0.6' UP ON NW SIDE
R. OAK 31", S87°W, 17.15' TO A MAG NAIL 1.0' UP ON N SIDE
FENCE POST, SOUTH, 0.4' W/HCSS