

9-0

6/28

HARRISON COUNTY SURVEYOR  
CORNER MONUMENT RECOVERY & REFERENCE RECORD

TWNSHIP: 4 RANGE: 3 SECTION: 20

CORNER REF. LD.: 9-0  
DATE: 05 / 1 / 05

MONUMENT INFORMATION

LOCATION: 1/4 CORNER Common to SEC 20 + 21

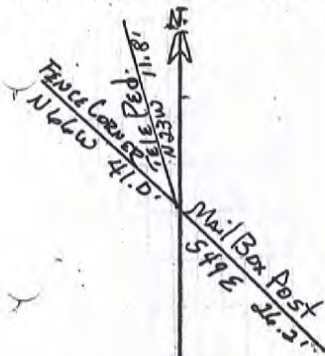
DESCRIPTION: MAG NAIL in CONCRETE Plug OVER Railroad Spike

ADDITIONAL DISTINGUISHING CHARACTERISTICS: \_\_\_\_\_

SIGN PLACED: ( ) YES DATE: 1 / 1

WITNESS MARKERS

TYPE	SIGN	BLAZE	ADDITION DESCRIPTION
1 TELE. POLE	Post + Sign	( ) ( )	N 23 W 11.8'
2 FENCE CORNER	( ) ( )	( ) ( )	N 66 W 41.0'
3 MAIL BOX POST	( ) ( )	( ) ( )	S 49 E 26.2'



2	3	4	5	6	7	8	9	10	11	12	13	14	15	16	17	18	19	20	21	22	23	24	
25	26	27	28	29	30	31	32	33	34	35	36	37	38	39	40	41	42	43	44	45	46	47	48
49	50	51	52	53	54	55	56	57	58	59	60	61	62	63	64	65	66	67	68	69	70	71	72
73	74	75	76	77	78	79	80	81	82	83	84	85	86	87	88	89	90	91	92	93	94	95	96
97	98	99	100	101	102	103	104	105	106	107	108	109	110	111	112	113	114	115	116	117	118	119	120

COVERED BY: V. McCauley

DATE: 5 / 1 / 09  
DATE:    /    /     
DATE:    /    /   

REFERENCED BY: TDB

DATE: 6 / 1 / 09  
DATE:    /    /     
DATE:    /    /   

ORDERED IN PERPETUATION RECORDS BOOK:  
Thomas O. Bule

DATE: 7 / 9 / 09

9-Q

CORNER \_\_\_\_\_ TOWNSHIP 4 S RANGE 3 E EAST 2ND PRINCIPAL MERIDIAN

LOCATION	DESCRIPTION OF		DISTANCE FROM CORNER	BEARING FROM CORNER	DATE CHECKED	CHECKED BY	FIELD BOOK	REMARKS
	MONUMENT	REFERENCE						
Common Corn Sec 20-21 28-29	#5 Rebar. w/ Disk	37" W Oak	35.0'	N 4 E	6/09	TOB	6/25	Carsonite Post 0.6'N
		13" B. Oak	39.0'	S 23 E				
		8" Cherry w/ sign	15'	West				

9-Q

### CORNERS RECOVERED CONTINUED

**Q-9 QUARTER CORNER TO SECTIONS 20 & 21, T-4-S, R-3-E, CONTINUED**  
 A MAG NAIL WAS SET IN A CONCRETE PLUG OVER THE RAILROAD SPIKE.  
**ACCESSORIES ESTABLISHED:**  
 TELEPHONE PEDESTAL POST W/SIGN, N23°W, 11.8', MAG NAIL 1' UP ON E SIDE  
 FENCE CORNER, N66°W, 41.0', MAG NAIL 1' UP ON SW SIDE  
 STEEL MAIL BOX POST, S49°E, 26.2'

**O-11 CENTER QUARTER CORNER IN SECTION 21, T-4-S, R-3-E**  
 RECOVERED ROAD NAIL AS DEPICTED ON THE ABOVE CITED 2007  
 SURVEY BY LS365. THE NAIL IS 8' SOUTH OF THE NEP OF BROWN-  
 CUNNINGHAM ROAD IN LINE WITH FENCING TO THE NORTH & SOUTH. THE  
 POSITION OF THE NAIL IS SUPPORTED BY MEASUREMENTS TO ADJACENT  
 CORNERS AND VERY OLD AND DISTINCT CULTURAL FEATURES IN THE  
 VICINITY. A #5 BY 1' PIN WAS SET 0.6' DEEP AND A MAG NAIL WAS SET IN A  
 CONCRETE PLUG OVER THE PIN. ACCESSORIES ESTABLISHED:  
 FENCE POST, NORTH, 15.8', MAG NAIL 1' UP ON E SIDE  
 TELEPHONE PEDESTAL, N32°W, 16.1'  
 FENCE CORNER W/SIGN, S1°W, 13.3', MAG NAIL 1' UP ON E SIDE

**O-13 QUARTER CORNER TO SECTIONS 21 & 22, T-4-S, R-3-E**  
 RECOVERED #5 SPC, LS336 IN THE INTERSECTION OF HEIDELBERG ROAD  
 AND BROWN-CUNNINGHAM ROAD. THE PIN IS 2' S & 5' E OF THE CENTERLINE  
 INTERSECTION. THE POSITION OF THE SPC IS SUPPORTED BY  
 MEASUREMENTS TO ADJACENT CORNERS AND VERY OLD AND DISTINCT  
 CULTURAL FEATURES IN THE VICINITY. SEE SURVEYS RECORDED IN SURVEY  
 BOOK 4, PAGE 28 AND INSTRUMENT NUMBERS 200503223, 200603719 &  
 200700670. A MAG NAIL WAS SET IN A CONCRETE PLUG OVER THE  
 MONUMENT. ACCESSORIES ESTABLISHED:  
 TELEPHONE PEDESTAL, S26°E, 30.2'  
 UTILITY POLE W/SIGN, S52°W, 29.9', MAG NAIL 1' UP ON SE SIDE  
 TELEPHONE PEDESTAL, N54°W, 67.6'

**Q-1 WEST SECTION CORNER TO SECTIONS 19 & 30, T-4-S, R-3-E**  
 5/8" CRIMPED TOP PIPE CORNER "E" PER 2002 DNR SURVEY WHICH IS  
 ATTACHED HERETO AND MADE A PART HEREOF AS EXHIBIT "E" AND SW  
 CORNER SECTION 19 PER 2006 SURVEY BY LS451 OF RECORD IN INSTRUMENT  
 #200701409. SEE EXHIBIT "G" FOR ACCESSORIES.

**Q-2 WEST SIXTEENTH CORNER TO SECTIONS 19 & 30, T-4-S, R-3-E**  
 #4 PIN CORNER "F" PER 2002 DNR SURVEY WHICH IS ATTACHED HERETO  
 AND MADE A PART HEREOF AS EXHIBIT "E" AND CORNER ON SOUTH LINE OF  
 SECTION 19 PER 2006 SURVEY BY LS451 OF RECORD IN INSTRUMENT  
 #200701409. SEE EXHIBIT "G" FOR ACCESSORIES.

**Q-9 SECTION CORNER TO SECTIONS 20, 21, 28 & 29, T-4-S, R-3-E**  
 RECOVERED FRACTURED STONE PER 1995 SURVEY BY LS131, SEE  
 SURVEY BOOK 2, PAGE 254 AND 2007 SURVEY BY LS365. SEE INSTRUMENT  
 #200800992. THE STONE IS IN AN E-W FENCE LINE ON THE E SIDE OF A BRACE  
 POST, THE FENCE "T" CORNER IS 8.3' WEST.

**SURVY FOR:**  
 THOMAS O. BUBE  
 HARRISON COUNTY SURVEYOR  
 300 N. CAPITOL AVENUE  
 CORYDON, IN 47112

**SURVEY BY:**  
 MCCAULEY & COMPANY, INC., P.S.C.  
 PROFESSIONAL LAND SURVEYORS  
 P.O. BOX 39  
 ELIZABETH, IN 47117-0039  
 812-969-2186  
 E-mail mccauleypsc@verizon.net

JOB 10809

9-Q

### CORNERS RECOVERED CONTINUED

**Q-9 SECTION CORNER TO SECTIONS 20, 21, 28 & 29, T-4-S, R-3-E, CONTINUED THE STONE WAS REPLACED WITH A #5 BY 30" PIN WITH 3/4" ALUMINUM CAP STAMPED TO DEPICTED THE CORNER POSITION. THE POSITION OF THE SPC IS SUPPORTED BY MEASUREMENTS TO ADJACENT CORNERS AND VERY OLD AND DISTINCT CULTURAL FEATURES IN THE VICINITY. ACCESSORIES ESTABLISHED:**

- CARSONITE POST, NORTH, 0.6'
- W. OAK 37", N4°E, 35.0'
- B. OAK 13", S23°E, 39.0', MAG NAIL 1' UP IN W SIDE
- FENCE BRACE POST W/SIGN, WEST, 0.5'

**Q-11 QUARTER CORNER TO SECTIONS 21 & 28, T-4-S, R-3-E RECOVERED #4 SPC, LS131, PROJECTING 1'. THE MONUMENT IS AT AN OLD DOWN FENCE CORNER POST. THE CORNER IS SHOWN ON THE 1995 SURVEY BY LS131, SEE SURVEY BOOK 2, PAGE 254, BUT NO MONUMENT IS DEPICTED. THE 2007 SURVEY BY LS365 CALLS FOR #5 SPC, PROJECTING 10" AND HCSM. NO REFERENCE FOR THE CORNER WAS PROVIDED BY THE COUNTY SURVEYOR AND NO RECORDED SURVEY WAS DISCOVERED DURING RESEARCH FOR THIS SURVEY. WE USED THE AUDITOR'S FILES FOR A COPIES OF LS365 SURVEYS. THE POSITION OF THE SPC IS SUPPORTED BY MEASUREMENTS TO ADJACENT CORNERS AND VERY OLD AND DISTINCT CULTURAL FEATURES IN THE VICINITY. ACCESSORIES ESTABLISHED:**

- CARSONITE POST, SOUTH, 0.5'
- HACKBERRY 18", N18°E, 4.6', MAG NAIL 1' UP ON E SIDE
- WALNUT 8", S27°E, 6.6', MAG NAIL 1' UP ON W SIDE
- SUGAR 10" W/SIGN, N77°W, 11.6', MAG NAIL 1' UP ON S SIDE

**Q-13 SECTION CORNER TO SECTIONS 21, 22, 27 & 28, T-4-S, R-3-E RECOVERED AN AXLE 0.7' DEEP IN HEIDELBERG ROAD, 8' EAST OF THE WEST. THE POSITION OF THIS CORNER IS SUPPORTED BY MEASUREMENTS TO ADJACENT CORNERS AND VERY OLD AND DISTINCT CULTURAL FEATURES IN THE VICINITY. SEE SURVEYS RECORDED IN SURVEY BOOK 4, PAGE 28 AND INSTRUMENT NUMBERS 200503223, 200603719 & 200700670. A MAG HUB WAS SET IN A CONCRETE PLUG OVER THE MONUMENT. ACCESSORIES ESTABLISHED:**

- TELEPHONE PEDESTAL, N56°E, 22.0'
- CHERRY 8" W/SIGN, N44°W, 21.3' MAG NAIL 1' UP ON SW SIDE
- MAPLE 12", S36°E, 68.5'

**S-5 QUARTER CORNER TO SECTIONS 29 & 30, T-4-S, R-3-E CORNER "R" PER 2002 DNR SURVEY WHICH IS ATTACHED HERETO AND MADE A PART HEREOF AS EXHIBIT "G". SEE EXHIBIT "G" FOR ACCESSORIES.**

### CORNERS RESTORED

**I-5 SECTION CORNER TO SECTIONS 7, 8, 17 & 18, T-4-S, R-3-E RESTORED CORNER POSITION PER CHAPTERS V & VI OF "THE MANUAL OF SURVEYING INSTRUCTIONS". RESTORED CORNER POSITION ON LINE AT PROPORTIONAL DISTANCE BETWEEN VERIFIABLE STONES RECOVERED TO THE EAST & WEST (SEE I-3 & I-7 ABOVE).**

SURVEY FOR:  
THOMAS O. BUBE  
HARRISON COUNTY SURVEYOR  
300 N. CAPITOL AVENUE  
CORYDON, IN 47112

SURVEY BY:  
MCCAULEY & COMPANY, INC., P.S.C.  
PROFESSIONAL LAND SURVEYORS  
P.O. BOX 39  
ELIZABETH, IN 47117-0039  
812-969-2186  
E-mail mccauleypsc@verizon.net

JOB 10809

Point No. 209

Harrison Co. No. Q-9

9-Q

T 4 S R 3 E 2nd Mer. County Harrison State Indiana

Section Corner common to Sections 20 and 21, 28 & 29

EXISTING SURVEYS

Original Government Survey	Original Evidence Found
Year surveyed <u>1805</u> Original monument <u>Wood Post</u> <small>(wood post, stone, pile of stones, etc.)</small> <hr/> Bearing Trees Species _____ Diameter _____ Bearing _____ Distance _____	Year of search <u>N/A</u> By _____ Monument found _____ <hr/> Original Bearing Trees Found Species _____ Diameter _____ Bearing _____ Distance _____
Subsequent Corner Restoration	Evidence of Subsequent Corner Restoration Found
Year surveyed _____ By _____ Where filed or recorded _____ Monument _____ <small>(Original, concrete post, iron rod, etc.)</small> <hr/> Bearing Trees, Reference Objects Species _____ Diameter _____ Bearing _____ Distance _____	Year of search <u>2009</u> By <u>VHM</u> Recovered fractured stone.



At time of search:

- Did you have the record description? Yes X No \_\_\_\_\_
- How was search area located?  
pacing, chaining, photo, maps, etc. SURVEYING
- Man hours spent in search N/A
- Do you think additional search might recover evidence? Yes \_\_\_\_\_ No X
- Signature Vit Horn

Relation of Evidence to Record Features Along Section Lines

Section line to sections \_\_\_\_\_  
 Object \_\_\_\_\_  
 Record Distance \_\_\_\_\_  
 Measured Distance \_\_\_\_\_

Other Evidence

Describe evidence of use and occupation such as roads, fences, clearings, timber cutting lines, plantations, etc... Cite source of testimony, If any. \_\_\_\_\_

Perpetuation Record

Monument and accessories established. Include brief description of area. Replaced broken stone with #5 by 30" with 3/4" aluminum disk.

W. Oak	B. Oak	Fence Brace	Carsonite
37"	13"	<del>Post</del> W/sign	Post
N 4° E	S 23° E	West	North
35.0'	39.0'	0.5'	0.6'
	MN + 1.0'	8" CHERR	
	W. Side	15'	
		WEST	
		SIGN	

Certified corner restoration certificate prepared Yes \_\_\_\_\_ No X  
 Filed in county records at \_\_\_\_\_ Date \_\_\_\_\_ County No. \_\_\_\_\_  
 Identified on aerial photo No. \_\_\_\_\_ Which is filed at \_\_\_\_\_

9-Q

HARRISON COUNTY SURVEYOR 6/25  
CORNER MONUMENT RECOVERY & REFERENCE RECORD

TWNSHP: 4 RANGE: 3 SECTION:

CORNER REF. ID: 9-Q  
DATE: 6-1-109

MONUMENT INFORMATION

LOCATION: Common CORNER to 20-21-28-29

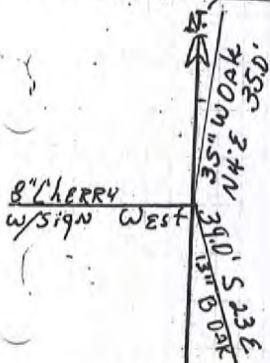
DESCRIPTION: #5 Rebar with Disk

ADDITIONAL DISTINGUISHING CHARACTERISTICS:

SIGN PLACED: ( ) YES DATE: 1/1

WITNESS MARKERS

TYPE	SIGN	BLAZE	ADDITION DESCRIPTION
1. 37" W OAK	( )	( )	35' N 4 E
2. 13" B OAK	( )	( )	39' S 23 E
3. 8" CHERRY w/SIGN	( )	( )	WEST



	1	2	3	4	5	6	7	8	9	10	11	12	13	14	15	16	17	18	19	20	21	22	23	24
A																								
B																								
C																								
D																								
E																								
F																								
G																								
H																								
I																								
J																								
K																								
L																								
M																								
N																								
O																								
P																								
Q																								
R																								
S																								
T																								
U																								
V																								
W																								
X																								
Y																								
Z																								

COVERED BY: V. McCauley

DATE: 1/1/09  
DATE: / /  
DATE: / /

REFERENCED BY: 10B

DATE: 7-1-109  
DATE: / /  
DATE: / /

DEP. IN PERPETUATION RECORDS BOOK:  
Thomas D. Bube

DATE: 7-1-109

HARRISON

COUNTY

10-J

CORNER

10-J

TOWNSHIP

4

RANGE

3

EAST

2ND

PRINCIPAL MERIDIAN

LOCATION	DESCRIPTION OF		DISTANCE FROM CORNER	BEARING FROM CORNER	DATE CHECKED	CHECKED BY	FIELD BOOK	REMARKS
	MONUMENT	REFERENCE						
SW Corner, NE 1/4, NW 1/4 Sec. 16	Stone	22" Poplar	15.80	N11-29-0E	7-26-89	T.B.	#3 Pg54	Sign Placed
		.70" Ash	11.50'	S83-0-0E	7-26-89	T.B.		Sign Placed
		1.10' D. Poplar	7.40	S10-06-0E	7-26-89	T.B.		Sign Placed

10-J

↑ N

Stone is marked with a 1/2" pipe.  
 Stone is 0.20' x 0.50' x 0.40' out of  
 ground. Stone comes to a point T  
 Fence corner had a  
 government sign.

1.80' Ø Poplar, Nail is on  
 East side + 1.70' up.

11-29-0E  
 15.80'

All Trees have a  
 witness sign

0.50' stone

0.70' Ø Ash, Nail

Fence corner

is on north side +

S.W. corner, NE 1/4  
 NW 1/4, Section 16  
 T4S, R3E

510-06-0E

1.20' up.

7.40'

Party Chief T. Brown  
 Head Chain R. Crome  
 Rear Chain A. Clements

1.10' Ø double poplar, nail  
 is on west side + 1.60' up  
 fork to the west

7-26-89

PAGE 54

10-J



Point No. 101


Harrison Co. No. J-10

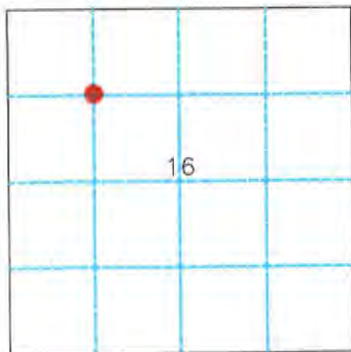
**10-J**

T 4 S R 3 E 2nd Mer. County Harrison State Indiana

NW 1/16 Corner common to Section 16 and \_\_\_\_\_

EXISTING SURVEYS

Original Government Survey	Original Evidence Found
Year surveyed <u>N/A</u> Original monument _____ <small>(wood post, stone, pile of stones, etc.)</small> <hr/> Bearing Trees Species _____ Diameter _____ Bearing _____ Distance _____	Year of search _____ By _____ Monument found _____ <hr/> Original Bearing Trees Found Species _____ Diameter _____ Bearing _____ Distance _____
Subsequent Corner Restoration	Evidence of Subsequent Corner Restoration Found
Year surveyed <u>1890</u> By <u>Harrison Co. Surveyor</u> Where filed or recorded <u>LSB I, Page 152</u> Monument <u>None cited</u> <small>(Original, concrete post, iron rod, etc...)</small> <hr/> Bearing Trees, Reference Objects Species _____ Diameter _____ Bearing _____ Distance _____	Year of search <u>1989</u> By <u>Harrison Co. Surveyor</u> <u>Recovered sandstone lying loose on ground. The stone was reset per 1989 recovery.</u> 



Relation of Evidence to Record Features Along Section Lines

Section line to sections \_\_\_\_\_  
 Object \_\_\_\_\_  
 Record Distance \_\_\_\_\_  
 Measured Distance \_\_\_\_\_

Other Evidence

Describe evidence of use and occupation such as roads, fences, clearings, timber cutting lines, plantations, etc... Cite source of testimony, if any. \_\_\_\_\_

Perpetuation Record

Monument and accessories established. Include brief description of area. Reset stone per 1989 recovery.

Beech W/sign	Poplar	Fence Corner Post	Carsonite
5"	28"	W/old sign	Post
N 64° E	N 5° E	S 60° W	South
17.2'	15.6'	0.8'	0.5'
MN + 1.5'	MN + 1.5'	MN + 0.6'	
S. Side	E. Side	E. Side	

At time of search:

- Did you have the record description? Yes X No \_\_\_\_\_
- How was search area located? pacing, chaining, photo, maps, etc. SURVEYING
- Man hours spent in search N/A
- Do you think additional search might recover evidence? Yes \_\_\_\_\_ No X
- Signature Vick H. Mc

Certified corner restoration certificate prepared Yes \_\_\_\_\_ No X  
 Filed in county records at \_\_\_\_\_ Date \_\_\_\_\_ County No. \_\_\_\_\_  
 Identified on aerial photo No. \_\_\_\_\_ Which is filed at \_\_\_\_\_

HARRISON

COUNTY

CORNER 10-J

TOWNSHIP 4 S

RANGE 3 E

EAST

2ND

PRINCIPAL MERIDIAN

10-J

LOCATION	DESCRIPTION OF		DISTANCE FROM CORNER	BEARING FROM CORNER	DATE CHECKED	CHECKED BY	FIELD BOOK	REMARKS
	MONUMENT	REFERENCE						
NW 1/16 Sec 16	Sandstone	5" Beech w/sign	17.2'	N 64 E	5/09	TOB	6/57	Carsonite Post 0.5'S
		28" Poplar	15.6'	N 5 E				
		Fence Corn Postw/sign	0.8'	S 60 W				

10-J

**CORNERS RECOVERED CONTINUED**

**J-10 NW 1/16th CORNER IN SECTION 16, T-4-S, R-3-E**  
RECOVERED SANDSTONE OUT OF GROUND AND A 3/4" PIPE AT A 90° FENCE CORNER. THE STONE WAS RESET PER THE COUNTY SURVEYOR'S 1989 RECOVERY NOTES. THE STONE IS 0.2' BY 0.5' PROJECTING 0.4'. A CAIRN OF ROCKS WERE PLACED AROUND THE STONE. THIS IS CORNER "1" PER 1890 LEGAL SURVEY, SEE LEGAL SURVEY BOOK 1, PAGE 152. ACCESSORIES ESTABLISHED:  
CARSONITE POST, SOUTH, 0.5'  
BEECH 5" W/SIGN, N64°E, 17.2', MAG NAIL 1.5' UP ON S SIDE  
TRIPLE POPLAR W/FORK W/OLD SIGN, S8°E, 7.9' MAG NAIL 1.5' UP ON NW SIDE  
POPLAR 28", N5°E, 15.6', MAG NAIL 1.5' UP ON E SIDE  
FENCE POST W/OLD SIGN, S60°W, 0.8', MAG NAIL 0.6' UP ON E SIDE

**J-11 CN 1/16th CORNER IN SECTION 16, T-4-S, R-3-E**  
RECOVERED 3/4" PIPE PROJECTING 0.8'. THIS CORNER WAS SET DURING 1989 SURVEY BY LS131, JOB #89-3786. A RECORDED COPY OF THIS SURVEY WAS NOT DISCOVERED DURING RESEARCH FOR THIS SURVEY. THIS IS CORNER "1" PER 1890 LEGAL SURVEY, SEE LEGAL SURVEY BOOK 1, PAGE 152. THE 1890 SURVEY CALLS FOR A ROCK AT THIS CORNER. BASED ON THE MEASUREMENTS CITED IN BOTH SURVEYS AND THE VERY OLD AND DISTINCT CULTURAL FEATURES IN THE VICINITY, THE PIPE WAS ACCEPTED AS THE TRUE CORNER. THE 1989 SURVEY IS ATTACHED HERETO AND MADE A PART HERE OF AS EXHIBIT "D". ACCESSORIES ESTABLISHED:  
CARSONITE POST, EAST, 0.6'  
SUGAR 13" W/SIGN, N89°W, 4.0' MAG NAIL 1' UP IN N SIDE  
SUGAR 19", S14°W, 12.9', MAG NAIL 1' UP IN E SIDE  
ASH 22", S62°E, 9.3', MAG NAIL 1' UP IN SW SIDE

**J-13 NORTH 1/16th CORNER TO SECTIONS 15 & 16, T-4-S, R-3-E**  
RECOVERED RAILROAD SPIKE OF UNKNOWN ORIGIN 0.8' DEEP IN WINDELL LANE. THE CORNER IS 5' S OF THE NEP. THE POSITION OF THIS CORNER IS SUPPORTED BY MEASUREMENTS TO ADJACENT CORNERS, VERY OLD AND DISTINCT CULTURAL EVIDENCE IN THE VICINITY AND TESTIMONY BY LONG TIME LOCAL RESIDENTS. A MAG HUB WAS SET IN A CONCRETE PLUG OVER THE CORNER. ACCESSORIES ESTABLISHED:  
UTILITY POLE, S78°W, 55.5', MAG NAIL 1' UP IN N SIDE  
UTILITY POLE W/SIGN, N8°E, 23.2', MAG NAIL 1' UP IN W SIDE  
UTILITY POLE, S68°E, 77.7', MAG NAIL 1' UP IN N SIDE  
MAIL BOX POST, S10°E, 18.3'

**K-6 CW 1/16th CORNER IN SECTION 17, T-4-S, R-3-E**  
RECOVERED LIMESTONE PER LOCAL DEEDS AND 2002 SURVEY BY LS131, JOB #02-8847. A RECORDED COPY THIS SURVEY WAS NOT RECOVERED DURING RESEARCH FOR THIS PROJECT, THE SURVEY COPY USED IS FROM THE AUDITOR'S OFFICE, WHICH IS ATTACHED HERETO AND MAD A PART HEREOF AS EXHIBIT "E". THE STONE IS OF UNKNOWN ORIGIN BUT CITED IN SEVERAL OLD DEEDS IN THIS VICINITY. THE STONE IS 0.5' BY 0.3' PROJECTING 0.6', WITH A #5SPC-LS131 ON THE EAST SIDE AT A FENCE CORNER.

**SURVEY FOR:**  
THOMAS O. RUBE  
HARRISON COUNTY SURVEYOR  
300 N. CAPITOL AVENUE  
CORYDON, IN 47112

**SURVEY BY:**  
MCCAULEY & COMPANY, INC., P.S.C.  
PROFESSIONAL LAND SURVEYORS  
P.O. BOX 39  
ELIZABETH, IN 47117-0039  
812-969-2186  
E-mail mccauleypsc@verizon.net

JOB 10809

10-J

HARRISON COUNTY SURVEYOR 6/51  
CORNER MONUMENT RECOVERY & REFERENCE RECORD

TOWNSHIP: 4 RANGE: 3 SECTION: 16

CORNER REF. ID.: 10-J  
DATE: 5/1/09

MONUMENT INFORMATION

LOCATION: NW 1/4 CORNER SEC 16

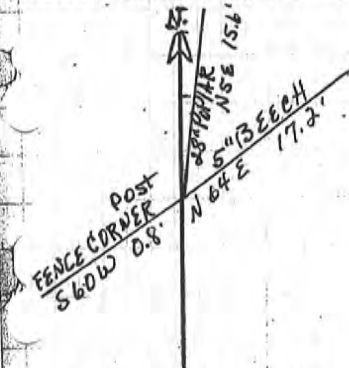
MATERIAL: SANDSTONE

ADDITIONAL DISTINGUISHING CHARACTERISTICS:  
CARSONITE Post 0.5' South

REPLACED: ( ) YES DATE: 1/1

WITNESS MARKERS

TYPE	SIGN	BLAZE	ADDITION DESCRIPTION
5" BEECH W/SIGN	(X)	( )	N 64 E 17.2'
28" POPLAR	( )	( )	N 5 E 15.6'
FENCE CORNER POST	oil (w)	( )	S 60 W 0.8'



1	2	3	4	5	6	7	8	9	10	11	12	13	14	15	16	17	18	19	20	21	22	23	24
25	26	27	28	29	30	31	32	33	34	35	36	37	38	39	40	41	42	43	44	45	46	47	48

COVERED BY: V. McCauley

DATE: 5/1/09

DATE: / /

DATE: / /

WITNESSED BY: TOB

DATE: 7/28/09

DATE: / /

DATE: / /

RECORDED IN PERPETUATION RECORDS BOOK:

Thomas D. Bube

DATE: 7/30/09

10-K

HARRISON

COUNTY

CORNER 10-K

TOWNSHIP 4 S

RANGE 3 E

2ND

PRINCIPAL MERIDIAN

LOCATION	DESCRIPTION OF		DISTANCE FROM CORNER	BEARING FROM CORNER	DATE CHECKED	CHECKED BY	FIELD BOOK	REMARKS
	MONUMENT	REFERENCE						
Center West 1/16 Sec.16	# 5 w/disk	20" Sugar	49.2'	N 78 E	5/09	TOB	6/46	Carsonite Post 0.6' N
		Fence Pull Post		N 40 E				
		W. Oak 20"	43.6'	S 57 E				

10-K

## CORNERS ESTABLISHED

**J-9** NORTH SIXTEENTH CORNER TO SECTIONS 16 & 17, T-4-S, R-3-E  
ESTABLISHED CORNER POSITION ON LINE AND EQUIDISTANT BETWEEN  
SECTION CORNER & QUARTER CORNER TO THE NORTH & SOUTH (SEE I-9 & K-  
9). THE POSITION OF THIS CORNER IS SUPPORTED BY VERY OLD AND  
DISTINCT CULTURAL FEATURES IN THE VICINITY. SET #5 BY 30" PIN W/3/4"  
ALUMINUM DISK STAMPED TO DEPICT THE CORNER POSITION.  
ACCESSORIES ESTABLISHED:

CARSONITE POST, NORTH, 0.6'  
CEDAR 18" W/OLD FOREST SIGN, NORTH, 22.9', MAG NAIL 1' UP ON E SIDE  
FENCE CORNER POST W/SIGN, S20°W, 2.4', MAG NAIL 1' UP ON E SIDE  
MAPLE 15", N85°W, 31.1', MAG NAIL 1' UP ON N SIDE

**K-7** CENTER QUARTER CORNER IN SECTION 17, T-4-S, R-4-E  
ESTABLISHED CORNER POSITION AT THE INTERSECTION OF THE  
QUARTER CORNERS TO THE NORTH, EAST, SOUTH & WEST. THE POSITION  
OF THIS CORNER IS SUPPORTED BY VERY OLD AND DISTINCT CULTURAL  
FEATURES IN THE VICINITY. SET #5 BY 30" PIN W/3/4" ALUMINUM DISK  
STAMPED TO DEPICT THE CORNER POSITION. THE MONUMENT IS IN A  
SMALL DRAINAGE DITCH, 18' E OF THE EEP OF DIXIE ROAD. ACCESSORIES  
ESTABLISHED:

CARSONITE POST, NORTH, 4'  
W. OAK 11", N16°W, 14.1', MAG NAIL 1' UP ON W SIDE  
MAPLE 12" W/SIGN, N76°E, 18.1', MAG NAIL 1' UP ON SE SIDE  
W. OAK 14", S13°W, 15.7', MAG NAIL 1' UP ON E SIDE

**K-10** CENTERWEST SIXTEENTH CORNER IN SECTION 16, T-4-S, R-3-E  
ESTABLISHED CORNER POSITION ON LINE AND EQUIDISTANT BETWEEN  
QUARTER SECTION CORNER & CENTER QUARTER CORNER TO THE EAST &  
WEST (SEE K-9 & K-11). THE POSITION OF THIS CORNER IS SUPPORTED BY  
VERY OLD AND DISTINCT CULTURAL FEATURES IN THE VICINITY. SET #5  
BY 30" PIN W/3/4" ALUMINUM DISK STAMPED TO DEPICT THE CORNER  
POSITION. ACCESSORIES ESTABLISHED:

CARSONITE POST, NORTH, 0.6'  
FENCE PULL POST W/SIGN, N40°E, MAG NAIL 1' UP ON N SIDE  
SUGAR 20", N78°E, 49.2', MAG NAIL 1' UP ON N SIDE  
W. OAK 20", S57°E, 43.6', MAG NAIL 1' UP ON S SIDE

**L-10** SOUTHWEST SIXTEENTH CORNER IN SECTION 16, T-4-S, R-3-E  
ESTABLISHED CORNER POSITION AT THE INTERSECTION OF THE  
SIXTEENTH CORNERS TO THE NORTH, EAST, SOUTH & WEST. THE POSITION  
OF THIS CORNER IS SUPPORTED BY VERY OLD AND DISTINCT CULTURAL  
FEATURES IN THE VICINITY. SET #5 BY 30" PIN W/3/4" ALUMINUM DISK  
STAMPED TO DEPICT THE CORNER POSITION. ACCESSORIES ESTABLISHED:

CARSONITE POST, EAST, 0.6'  
CEDAR 15" W/SIGN, S56°W, 1.0', MAG NAIL 1' UP ON E SIDE  
FENCE PULL POST, N11°W, 32.9', MAG NAIL 1' UP ON E SIDE  
ASH 12", S74°E, 43.6', MAG NAIL 1' UP ON S SIDE

SURVEY FOR:  
THOMAS O. BURE  
HARRISON COUNTY SURVEYOR  
300 N. CAPITOL AVENUE  
CORYDON, IN 47112

SURVEY BY:  
MCCAULEY & COMPANY, INC., P.S.C.  
PROFESSIONAL LAND SURVEYORS  
P.O. BOX 39  
ELIZABETH, IN 47117-0039  
812-969-2186  
E-mail mccauleypsc@verizon.net

JOB 10809

Point No. 450


**10-K**

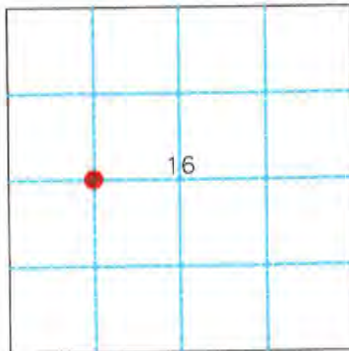
Harrison Co. No. K-10

T 4 S R 3 E 2nd Mer. County Harrison State Indiana

CW 1/16 Corner common to Section 16 and \_\_\_\_\_

EXISTING SURVEYS

Original Government Survey	Original Evidence Found
Year surveyed <u>N/A</u> Original monument _____ <small>(wood post, stone, pile of stones, etc.)</small> <hr/> <p style="text-align: center;">Bearing Trees</p> Species _____ Diameter _____ Bearing _____ Distance _____	Year of search _____ By _____ Monument found _____ <hr/> <p style="text-align: center;">Original Bearing Trees Found</p> Species _____ Diameter _____ Bearing _____ Distance _____
Subsequent Corner Restoration	Evidence of Subsequent Corner Restoration Found
Year surveyed _____ By _____ Where filed or recorded _____ Monument _____ <small>(Original, concrete post, iron rod, etc...)</small> <hr/> <p style="text-align: center;">Bearing Trees, Reference Objects</p> Species _____ Diameter _____ Bearing _____ Distance _____	Year of search _____ By _____ 



Relation of Evidence to Record Features Along Section Lines

Section line to sections \_\_\_\_\_  
 Object \_\_\_\_\_  
 Record Distance \_\_\_\_\_  
 Measured Distance \_\_\_\_\_

Other Evidence

Describe evidence of use and occupation such as roads, fences, clearings, timber cutting lines, plantations, etc... Cite source of testimony, If any. \_\_\_\_\_

Perpetuation Record

Monument and accessories established. Include brief description of area. Set #5 by 30" with 3/4" aluminum disk, 3.4' West of North-South fence. Set Carsonite Post 0.6' North.

Sugar	Fence Pull	W. Oak
20"	Post	20"
N 78° E	N 40° E	S 57° E
49.2'		43.6'
MN + 1.0'	MN + 1.0'	MN + 1.0'
N. Side	N. Side	S. Side

- At time of search:
- Did you have the record description? Yes X No \_\_\_\_\_
  - How was search area located? pacing, chaining, photo, maps, etc. SURVEYING
  - Man hours spent in search N/A
  - Do you think additional search might recover evidence? Yes \_\_\_\_\_ No X
  - Signature Vit H M

Certified corner restoration certificate prepared Yes \_\_\_\_\_ No X  
 Filed in county records at \_\_\_\_\_ Date \_\_\_\_\_ County No. \_\_\_\_\_  
 Identified on aerial photo No. \_\_\_\_\_ Which is filed at \_\_\_\_\_

10-K

HARRISON COUNTY SURVEYOR  
CORNER MONUMENT RECOVERY & REFERENCE RECORD

TWNSHIP: 4 RANGE: 3 SECTION: 16

CORNER REF. LD.: 10-K  
DATE: 51 / 109

MONUMENT INFORMATION

LOCATION: CW 1/16

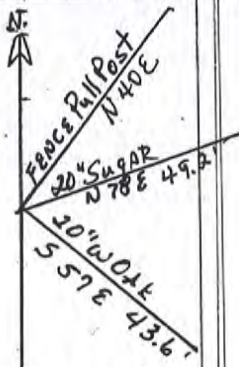
DESCRIPTION: #5 w/disk 3.4' W. of North-South  
FENCE

ADDITIONAL DISTINGUISHING CHARACTERISTICS:  
CARSONITE Post .6' North

SIGN PLACED: ( ) YES DATE: 1 / 1

WITNESS MARKERS

TYPE	SIGN	BLAZE	ADDITION DESCRIPTION
1. 20" SUGAR	( )	( )	N 78 E 49.2'
2. FENCE PULL POST	( )	( )	N 40 E
3. W. OAK 20"	( )	( )	S 57 E 43.6'



	1	2	3	4	5	6	7	8	9	10	11	12	13	14	15	16	17	18	19	20	21	22	23	24	
A																									
B																									
C																									
D																									
E																									
F																									
G																									
H																									
I																									
J																									
K																									
L																									
M																									
N																									
O																									
P																									
Q																									
R																									
S																									
T																									
U																									
V																									
W																									
X																									
Y																									
Z																									

RECOVERED BY: V. McCauley

DATE: 51 / 109  
DATE: / /  
DATE: / /

REFERENCED BY: TOTB

DATE: 7 / 28 / 09  
DATE: / /  
DATE: / /

RECORDED IN PERPETUATION RECORDS BOOK:  
BY: Thomas C. Bube

DATE: 7 / 30 / 09



10-L

HARRISON

COUNTY

CORNER 10-L

TOWNSHIP 4 S

RANGE 3 E EAST

2ND

PRINCIPAL MERIDIAN

LOCATION	DESCRIPTION OF		DISTANCE FROM CORNER	BEARING FROM CORNER	DATE CHECKED	CHECKED BY	FIELD BOOK	REMARKS
	MONUMENT	REFERENCE						
SW 1/16 Sec. 16	#5 w/disk	15" cedar w/sign	1.0'	S 56 W	5/09	TOB	6/40	Carsonite Post 0.6' E
		Fence Pull Post	32.9'	N 11 W				
		12" Ash	43.6'	S 74 E				

10-L

**CORNERS ESTABLISHED**

**J-9 NORTH SIXTEENTH CORNER TO SECTIONS 16 & 17, T-4-S, R-3-E**  
ESTABLISHED CORNER POSITION ON LINE AND EQUIDISTANT BETWEEN SECTION CORNER & QUARTER CORNER TO THE NORTH & SOUTH (SEE I-9 & K-9). THE POSITION OF THIS CORNER IS SUPPORTED BY VERY OLD AND DISTINCT CULTURAL FEATURES IN THE VICINITY. SET #5 BY 30" PIN W/3/4" ALUMINUM DISK STAMPED TO DEPICT THE CORNER POSITION. ACCESSORIES ESTABLISHED:

CARSONITE POST, NORTH, 0.6'  
CEDAR 18" W/OLD FOREST SIGN, NORTH, 22.9', MAG NAIL 1' UP ON E SIDE  
FENCE CORNER POST W/SIGN, S20°W, 2.4', MAG NAIL 1' UP ON E SIDE  
MAPLE 15", N85°W, 31.1', MAG NAIL 1' UP ON N SIDE

**K-7 CENTER QUARTER CORNER IN SECTION 17, T-4-S, R-4-E**  
ESTABLISHED CORNER POSITION AT THE INTERSECTION OF THE QUARTER CORNERS TO THE NORTH, EAST, SOUTH & WEST. THE POSITION OF THIS CORNER IS SUPPORTED BY VERY OLD AND DISTINCT CULTURAL FEATURES IN THE VICINITY. SET #5 BY 30" PIN W/3/4" ALUMINUM DISK STAMPED TO DEPICT THE CORNER POSITION. THE MONUMENT IS IN A SMALL DRAINAGE DITCH, 18' E OF THE EEP OF DIXIE ROAD. ACCESSORIES ESTABLISHED:

CARSONITE POST, NORTH, 4'  
W. OAK 11", N16°W, 14.1', MAG NAIL 1' UP ON W SIDE  
MAPLE 12" W/SIGN, N76°E, 18.1', MAG NAIL 1' UP ON SE SIDE  
W. OAK 14", S13°W, 15.7', MAG NAIL 1' UP ON E SIDE

**K-10 CENTERWEST SIXTEENTH CORNER IN SECTION 16, T-4-S, R-3-E**  
ESTABLISHED CORNER POSITION ON LINE AND EQUIDISTANT BETWEEN QUARTER SECTION CORNER & CENTER QUARTER CORNER TO THE EAST & WEST (SEE K-9 & K-11). THE POSITION OF THIS CORNER IS SUPPORTED BY VERY OLD AND DISTINCT CULTURAL FEATURES IN THE VICINITY. SET #5 BY 30" PIN W/3/4" ALUMINUM DISK STAMPED TO DEPICT THE CORNER POSITION. ACCESSORIES ESTABLISHED:

CARSONITE POST, NORTH, 0.6'  
FENCE PULL POST W/SIGN, N40°E, MAG NAIL 1' UP ON N SIDE  
SUGAR 20", N78°E, 49.2', MAG NAIL 1' UP ON N SIDE  
W. OAK 20", S57°E, 43.6', MAG NAIL 1' UP ON S SIDE

**L-10 SOUTHWEST SIXTEENTH CORNER IN SECTION 16, T-4-S, R-3-E**  
ESTABLISHED CORNER POSITION AT THE INTERSECTION OF THE SIXTEENTH CORNERS TO THE NORTH, EAST, SOUTH & WEST. THE POSITION OF THIS CORNER IS SUPPORTED BY VERY OLD AND DISTINCT CULTURAL FEATURES IN THE VICINITY. SET #5 BY 30" PIN W/3/4" ALUMINUM DISK STAMPED TO DEPICT THE CORNER POSITION. ACCESSORIES ESTABLISHED:

CARSONITE POST, EAST, 0.6'  
CEDAR 15" W/SIGN, S56°W, 1.0', MAG NAIL 1' UP ON E SIDE  
FENCE PULL POST, N11°W, 32.9', MAG NAIL 1' UP ON E SIDE  
ASH 12", S74°E, 43.6', MAG NAIL 1' UP ON S SIDE

SURVEY FOR:  
THOMAS O. BUBE  
HARRISON COUNTY SURVEYOR  
300 N. CAPITOL AVENUE  
CORYDON, IN 47112

SURVEY BY:  
MCCAULEY & COMPANY, INC., P.S.C.  
PROFESSIONAL LAND SURVEYORS  
P.O. BOX 39  
ELIZABETH, IN 47117-0039  
812-969-2186  
E-mail mccauleypsc@verizon.net

JOB 10809

Point No. 454


Harrison Co. No. L-10

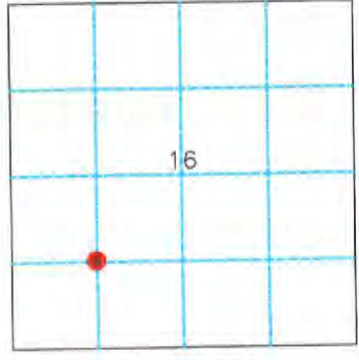
**10-L**

T 4 S R 3 E 2nd Mer. County Harrison State Indiana

SW 1/16 Corner common to Section 16 and \_\_\_\_\_

EXISTING SURVEYS

Original Government Survey	Original Evidence Found
Year surveyed <u>N/A</u> Original monument _____ <small>(wood post, stone, pile of stones, etc.)</small>	Year of search _____ By _____ Monument found _____
Bearing Trees	Original Bearing Trees Found
Species _____ Diameter _____ Bearing _____ Distance _____	Species _____ Diameter _____ Bearing _____ Distance _____
Subsequent Corner Restoration	Evidence of Subsequent Corner Restoration Found
Year surveyed _____ By _____ Where filed or recorded _____ Monument _____ <small>(Original, concrete post, iron rod, etc...)</small>	Year of search _____ By _____ 
Bearing Trees, Reference Objects	
Species _____ Diameter _____ Bearing _____ Distance _____	



Relation of Evidence to Record Features Along Section Lines

Section line to sections \_\_\_\_\_

Object \_\_\_\_\_

Record Distance \_\_\_\_\_

Measured Distance \_\_\_\_\_

Other Evidence

Describe evidence of use and occupation such as roads, fences, clearings, timber cutting lines, plantations, etc... Cite source of testimony, If any. \_\_\_\_\_

Perpetuation Record

Monument and accessories established. Include brief description of area. Set #5 by 30" with 3/4" aluminum disk.

Cedar W/sign	Fence Pull	Ash	Carsonite
15"	Post	12"	Post
S 56° W	N 11° W	S 74° E	East
1.0'	32.9'	43.6'	0.6'
MN + 1.0'	MN + 1.0'	MN + 1.0'	
E. Side	E. Side	S. Side	

- At time of search:
- Did you have the record description? Yes  No \_\_\_\_\_
  - How was search area located?  
pacing, chaining, photo, maps, etc. SURVEYING
  - Man hours spent in search N/A
  - Do you think additional search might recover evidence? Yes \_\_\_\_\_  
No
  - Signature Vito H. Mc

Certified corner restoration certificate prepared Yes \_\_\_\_\_ No

Filed in county records at \_\_\_\_\_ Date \_\_\_\_\_ County No. \_\_\_\_\_

Identified on aerial photo No. \_\_\_\_\_ Which is filed at \_\_\_\_\_

10-L

6/40

HARRISON COUNTY SURVEYOR  
CORNER MONUMENT RECOVERY & REFERENCE RECORD

TWNSHP: 4 RANGE: 3 SECTION: 16

CORNER REF. ID.: 10-L  
DATE: 5 / 1 / 09

MONUMENT INFORMATION

LOCATION: SW 1/16

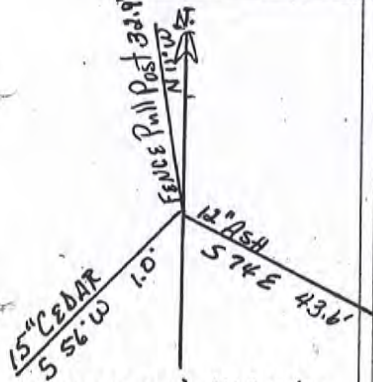
DESCRIPTION: #5 w/disk

ADDITIONAL DISTINGUISHING CHARACTERISTICS:  
CARBONITE POST .6' EAST

SIGN PLACED: ( ) YES DATE: 1 / 1 /

WITNESS MARKERS

TYPE	SIGN	BLAZE	ADDITION DESCRIPTION
1. 15" CEDAR	(X)	( )	S56°W 1.0'
2. FENCE Pull Post	( )	( )	N11°W 32.9'
3. 12" ASH	( )	( )	S74°E 43.6'



	1	2	3	4	5	6	7	8	9	10	11	12	13	14	15	16	17	18	19	20	21	22	23	24
A																								
B																								
C																								
D																								
E																								
F																								
G																								
H																								
I																								
J																								
K																								
L																								
M																								
N																								
O																								
P																								
Q																								
R																								
S																								
T																								
U																								
V																								
W																								
X																								
Y																								
Z																								

RECOVERED BY: V. McCauley

DATE: 5 / 1 / 09  
DATE: / /  
DATE: / /

REFERENCED BY: TOB

DATE: 7 / 28 / 09  
DATE: / /  
DATE: / /

RECORDED IN PERPETUATION RECORDS BOOK:  
BY: Thomas D. Bube

DATE: 7 / 30 / 09

COUNTY

HARRISON

10-M

CORNER 10-M

TOWNSHIP \$ 4 S

RANGE 3 E

EAST 2ND

PRINCIPAL MERIDIAN

LOCATION	DESCRIPTION OF		DISTANCE FROM CORNER	BEARING FROM CORNER	DATE CHECKED	CHECKED BY	FIELD BOOK	REMARKS
	MONUMENT	REFERENCE						
W 1/16 Corner Common to 16 & 21	#5 w/disk	Fence Post	10.1'	N 44 E	5/09	TOB	6/53	Carsonite Post 5' N
		Tele Ped.	6.8'	n 14 W				
		Fence Post	22.6'	N 48 W				
		Fence Post	24.4'	S 2 E				

**CORNERS ESTABLISHED CONTINUED**

**L-11 CENTERSOUTH SIXTEENTH CORNER IN SECTION 16, T-4-S, R-3-E**  
 ESTABLISHED CORNER POSITION ON LINE AND EQUIDISTANT BETWEEN  
 QUARTER SECTION CORNER & CENTER QUARTER CORNER TO THE NORTH &  
 SOUTH (SEE M-11 & K-11). THE POSITION OF THIS CORNER IS SUPPORTED BY  
 VERY OLD AND DISTINCT CULTURAL FEATURES IN THE VICINITY. SET #5  
 BY 30" PIN W/3/4" ALUMINUM DISK STAMPED TO DEPICT THE CORNER  
 POSITION. ACCESSORIES ESTABLISHED:  
 CARSONITE POST, NORTH, 0.5'  
 FENCE CORNER POST W/SIGN, S57°W, 4.3', MAG NAIL 1' UP ON N SIDE  
 HACKBERRY 14", N2°E, 8.5', MAG NAIL 1' UP ON E SIDE  
 HACKBERRY 8" W/WIRE, S68°E, 4.3', MAG NAIL 1' UP ON N SIDE

**M-6 WEST SIXTEENTH CORNER TO SECTIONS 17 & 20, T-4-S, R-3-E**  
 ESTABLISHED CORNER POSITION ON LINE AND EQUIDISTANT BETWEEN  
 SECTION CORNER & QUARTER CORNER TO THE EAST & WEST (SEE M-5 & M-7).  
 THE POSITION OF THIS CORNER IS SUPPORTED BY VERY OLD AND  
 DISTINCT CULTURAL FEATURES IN THE VICINITY. SET #5 BY 30" PIN W/3/4"  
 ALUMINUM DISK STAMPED TO DEPICT THE CORNER POSITION.  
 ACCESSORIES ESTABLISHED:  
 CARSONITE POST, WEST, 5'  
 POPLAR 29" W/SIGN & WIRE, N18°W, 10.9', MAG NAIL 1' UP ON SW SIDE  
 TWIN POPLAR 25", S29°W, MAG NAIL 1' UP ON W SIDE  
 BEECH 15", S68°E, 36.1', MAG NAIL 1' UP ON W SIDE  
 SPC-LS131, N0°25'E, 3.85'

**M-10 WEST SIXTEENTH CORNER TO SECTIONS 16 & 21, T-4-S, R-3-E**  
 ESTABLISHED CORNER POSITION ON LINE AND AT PROPORTIONAL  
 DISTANCE BETWEEN SECTION CORNERS RECOVERED TO THE EAST & WEST.  
 (SEE M-9 & M-13). THE POSITION OF THIS CORNER IS SUPPORTED BY VERY  
 OLD AND DISTINCT CULTURAL FEATURES IN THE VICINITY. SET #5 BY 30"  
 PIN W/3/4" ALUMINUM DISK STAMPED TO DEPICT THE CORNER POSITION.  
 THE MONUMENT IS 1' N OF THE NEP OF FAIRVIEW CHURCH ROAD.  
 ACCESSORIES ESTABLISHED:  
 CARSONITE POST, NORTH, 5'  
 FENCE POST, N44°E, 10.1' (SLOPE), MAG NAIL 1' UP ON W SIDE  
 TELEPHONE PEDESTAL, N14°W, 6.8'  
 FENCE POST, N48°W, 22.6', MAG 1' UP ON SW SIDE  
 FENCE POST W/SIGN, S2°E, 24.4', MAG NAIL 1' UP ON W SIDE

**SURVEY FOR:**  
 THOMAS O. BUBB  
 HARRISON COUNTY SURVEYOR  
 300 N. CAPITOL AVENUE  
 CORYDON, IN 47112

**SURVEY BY:**  
 MCCAULEY & COMPANY, INC., P.S.C.  
 PROFESSIONAL LAND SURVEYORS  
 P.O. BOX 39  
 ELIZABETH, IN 47117-0039  
 812-969-2186  
 E-mail mccauleypsc@verizon.net

JOB 10809

10-M

HARRISON COUNTY SURVEYOR  
CORNER MONUMENT RECOVERY & REFERENCE RECORD

TWNSHIP: 4 RANGE: 3 SECTION: 16 CORNER REF. I.D.: 10-M  
DATE: 5 / 1 / 09

MONUMENT INFORMATION

LOCATION: W 1/16 CORNER COMMON TO SEC. 16 + 21

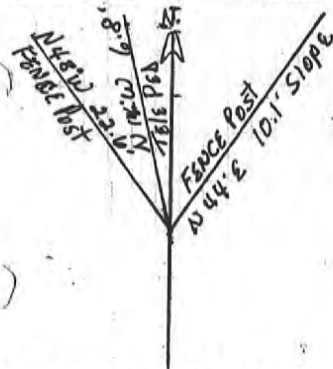
DESCRIPTION: # 5 w/disk

ADDITIONAL DISTINGUISHING CHARACTERISTICS: \_\_\_\_\_

SIGN PLACED: ( ) YES DATE:    /    /   

WITNESS MARKERS

TYPE	SIGN	BLAZE	ADDITION DESCRIPTION
1. FENCE POST	( )	( )	N 44° E 10.1' SLOPE
2. TELE. PEA	( )	( )	N 1/4° W 6.8'
3. FENCE POST	( )	( )	N 48° W 33.6'



	1	2	3	4	5	6	7	8	9	10	11	12	13	14	15	16	17	18	19	20	21	22	
A																							
B																							
C																							
D																							
E																							
F																							
G																							
H																							
I																							
J																							
K																							
L																							
M																							
N																							
O																							
P																							
Q																							
R																							
S																							
T																							
U																							
V																							
W																							
X																							
Y																							
Z																							

RECOVERED BY: D. McCauley DATE: 5 / 1 / 09  
DATE:    /    /     
DATE:    /    /   

REFERENCED BY: TDB DATE: 7 / 27 / 09  
DATE:    /    /     
DATE:    /    /   

RECORDED IN PERPETUATION RECORDS BOOK: Thomas O. Babe DATE: 7 / 30 / 09

Point No. 451


Harrison Co. No. M-10

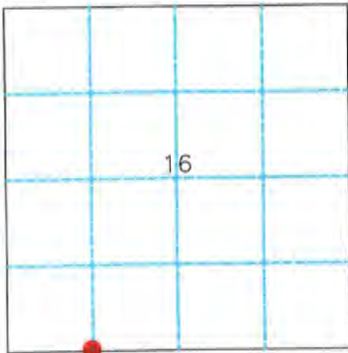
**10-M**

T 4 S R 3 E 2nd Mer. County Harrison State Indiana

W 1/16 Corner common to Sections 16 and 21

EXISTING SURVEYS

Original Government Survey	Original Evidence Found
Year surveyed <u>N/A</u> Original monument _____ <small>(wood post, stone, pile of stones, etc.)</small> <hr/> <p style="text-align: center;">Bearing Trees</p> Species _____ Diameter _____ Bearing _____ Distance _____	Year of search _____ By _____ Monument found _____ <hr/> <p style="text-align: center;">Original Bearing Trees Found</p> Species _____ Diameter _____ Bearing _____ Distance _____
Subsequent Corner Restoration	Evidence of Subsequent Corner Restoration Found
Year surveyed _____ By _____ Where filed or recorded _____ Monument _____ <small>(Original, concrete post, iron rod, etc...)</small> <hr/> <p style="text-align: center;">Bearing Trees, Reference Objects</p> Species _____ Diameter _____ Bearing _____ Distance _____	Year of search <u>N/A</u> By _____ 



Relation of Evidence to Record Features Along Section Lines

Section line to sections \_\_\_\_\_  
 Object \_\_\_\_\_  
 Record Distance \_\_\_\_\_  
 Measured Distance \_\_\_\_\_

Other Evidence

Describe evidence of use and occupation such as roads, fences, clearings, timber cutting lines, plantations, etc... Cite source of testimony, If any. \_\_\_\_\_

Perpetuation Record

Monument and accessories established. Include brief description of area. Set #5 by 30" with 3/4" aluminum disk 1.0' North of North edge pavement, Fairview Church Road. Set Carsonite Post, North 5'

Fence	Tele. Ped	Fence	Fence
Post		Post	Post
N 44° E	N 14° W	N 48° W	S 2° E
10.1' slope	6.8'	22.6'	24.4'
MN + 1.0'		MN + 1.0'	MN + 1.0'
W. Side		SW Side	W. Side
			W/Sign

Certified corner restoration certificate prepared Yes \_\_\_\_\_ No X  
 Filed in county records at \_\_\_\_\_ Date \_\_\_\_\_ County No. \_\_\_\_\_  
 Identified on aerial photo No. \_\_\_\_\_ Which is filed at \_\_\_\_\_

At time of search:

1. Did you have the record description? Yes X No \_\_\_\_\_
2. How was search area located?  
pacing, chaining, photo, maps, etc. SURVEYING
3. Man hours spent in search N/A
4. Do you think additional search might recover evidence? Yes \_\_\_\_\_ No X
5. Signature Vito H. M.



HARRISON

COUNTY

11-I

CORNER 11-I

TOWNSHIP 4 S

RANGE 3 E

EAST 2ND

PRINCIPAL MERIDIAN

LOCATION	DESCRIPTION OF		DISTANCE FROM CORNER	BEARING FROM CORNER	DATE CHECKED	CHECKED BY	FIELD BOOK	REMARKS
	MONUMENT	REFERENCE						
1/4 Corner to Sec 9-16	#5x30" w/disk	9 " Sugar	23.5'	N 71 W	5/09	TOB	6/50	Carsonite Post 0.6'N
	10' S of CLOF old E-W Rd.	10" Sugar w/sign	1.3'	N 78 E				
		30" Sugar	5.4'	S 22 W				

11-Z  
**CORNERS RESTORED CONTINUED**

**I-5 SECTION CORNER TO SECTIONS 7, 8, 17 & 18, T-4-S, R-3-E, CONTINUED**  
THE POSITION OF THIS CORNER IS SUPPORTED BY VERY OLD AND DISTINCT CULTURAL FEATURES IN THE VICINITY. SET #5 BY 30" PIN W/3/4" ALUMINUM DISK STAMPED TO DEPICT THE CORNER POSITION AND A CAIRN OF ROCKS WAS PLACED AROUND THE MONUMENT. SEE COMMENTS IN THE NARRATIVE. ACCESSORIES ESTABLISHED:

CARSONITE POST, SOUTH, 0.5'  
SUGAR 6" W/SIGN, S81°W, 9.6', MAG NAIL 1' UP ON N SIDE  
R. OAK 18", S28°W, 20.8' (SLOPE), MAG NAIL 1' UP ON NW SIDE  
R. OAK 14", N84°E, 41.1', MAG NAIL 1' UP ON S SIDE  
SPC-LS131, N88°E, 163.94' SEE EXHIBIT "E" WHICH IS ATTACHED HERETO AND MADE A PART HEREOF. NO REFERENCE FOR THE CORNER WAS PROVIDED BY THE COUNTY SURVEYOR AND NO RECORDED SURVEY WAS DISCOVERED DURING RESEARCH FOR THIS SURVEY. WE USED THE AUDITOR'S FILES FOR A COPIES OF LS131 SURVEY.

**I-9 SECTION CORNER TO SECTIONS 8, 9, 16 & 17, T-4-S, R-3-E**  
RESTORED CORNER POSITION PER CHAPTERS V & VI OF "THE MANUAL OF SURVEYING INSTRUCTIONS". RESTORED CORNER POSITION ON LINE AT VERY NEAR PROPORTIONAL DISTANCE BETWEEN VERIFIABLE STONES RECOVERED TO THE EAST & WEST (SEE I-7 & I-13 ABOVE). THE POSITION OF THIS CORNER IS SUPPORTED BY ORIGINAL SURVEY (1806) CALLS AND BY VERY OLD AND DISTINCT CULTURAL FEATURES IN THE VICINITY. SET #5 BY 30" PIN W/3/4" ALUMINUM DISK STAMPED TO DEPICT THE CORNER POSITION AND A CAIRN OF ROCKS WAS PLACED AROUND THE MONUMENT. SEE COMMENTS IN THE NARRATIVE. ACCESSORIES ESTABLISHED:

CARSONITE POST, NORTH, 0.6'  
R. OAK 8" W/SIGN, S87°E, 17.2', MAG NAIL 1' UP ON N SIDE  
R. OAK 17", N 78°W, 35.1', MAG NAIL 1' UP ON S SIDE  
HICKORY 20", N14°E, 26.1', MAG NAIL 1' UP ON W SIDE  
FENCE CORNER POST, S4°W, 11.9', MAG NAIL 1' UP ON E SIDE  
#4 PIN BY LS391, S5°30'W, 11.64' SEE SURVEY ATTACHED TO AND MADE A PART OF INSTRUMENT 200306921.

**I-11 QUARTER SECTION CORNER TO SECTIONS 9 & 16, T-4-S, R-3-E**  
RESTORED CORNER POSITION PER CHAPTERS V & VI OF "THE MANUAL OF SURVEYING INSTRUCTIONS". RESTORED CORNER POSITION ON LINE AT VERY NEAR PROPORTIONAL DISTANCE BETWEEN VERIFIABLE STONES RECOVERED TO THE EAST & WEST (SEE I-7 & I-13 ABOVE) AND MONUMENTS RECOVERED FROM SURVEY "EXHIBIT D" TO THE SOUTH. THE POSITION OF THIS CORNER IS SUPPORTED BY VERY OLD AND DISTINCT CULTURAL FEATURES IN THE VICINITY. SET #5 BY 30" PIN W/3/4" ALUMINUM DISK STAMPED TO DEPICT THE CORNER POSITION. SEE COMMENTS IN THE NARRATIVE. ACCESSORIES ESTABLISHED:

CARSONITE POST, NORTH, 0.6'  
SUGAR 10" W/SIGN, N78°E, 1.3', MAG NAIL 1' UP ON N SIDE  
SUGAR 30", S22°W, 5.4', MAG NAIL 1' UP ON W SIDE  
SUGAR 9" W/WIRE, N71°W, 23.5', MAG NAIL 1' UP ON S SIDE

**SURVEY FOR:**  
THOMAS O. BUBE  
HARRISON COUNTY SURVEYOR  
300 N. CAPITOL AVENUE  
CORYDON, IN 47112

**SURVEY BY:**  
MCCAULEY & COMPANY, INC., P.S.C.  
PROFESSIONAL LAND SURVEYORS  
P.O. BOX 39  
ELIZABETH, IN 47117-0039  
812-969-2186  
E-mail mccauleypsc@verizon.net

JOB 10809

11-I

6/50

HARRISON COUNTY SURVEYOR  
CORNER MONUMENT RECOVERY & REFERENCE RECORD

TWNSHP: 4 RANGE: 3 SECTION: 16

CORNER REF. ID.: 11-I  
DATE: 51 / 109

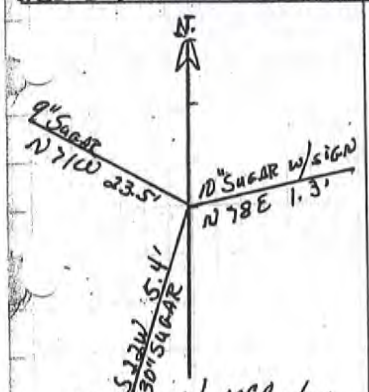
MONUMENT INFORMATION

LOCATION: 1/4 CORNER COMMON TO SEC 9+16  
DESCRIPTION: #5 w/disk 10' South of CENTERLINE of old EAST-WEST ROAD.  
ADDITIONAL DISTINGUISHING CHARACTERISTICS: CARSONITE Post Old North

MONUMENT PLACED: ( ) YES DATE: 1 / 1

WITNESS MARKERS

TYPE	SIGN	BLAZE	ADDITION DESCRIPTION
1. 9" SUGAR	( )	( )	N 71W 23.5'
2. 10" SUGAR w/SIGN	(X)	( )	N 78 E 1.3'
3. 30" SUGAR	( )	( )	S 22W 5.4'



1	2	3	4	5	6	7	8	9	10	11	12	13	14	15	16	17	18	19	20	21	22	23	24	
2																								
3																								
4																								
5																								
6																								
7																								
8																								
9																								
10																								
11																								
12																								
13																								
14																								
15																								
16																								
17																								
18																								
19																								
20																								
21																								
22																								
23																								
24																								

COVERED BY: J. McAuley

DATE: 51 / 109  
DATE:    /     
DATE:    /   

REFERENCED BY: TOT3

DATE: 7 / 28 / 09  
DATE:    /    /     
DATE:    /    /   

ORDERED IN PERPETUATION RECORDS BOOK:  
BY: Thomas O. Babe

DATE: 7 / 30 / 09

LAND CORNER RECORD  
(RECTANGULAR SURVEYS)

Point No. 441


Harrison Co. No. 1-11

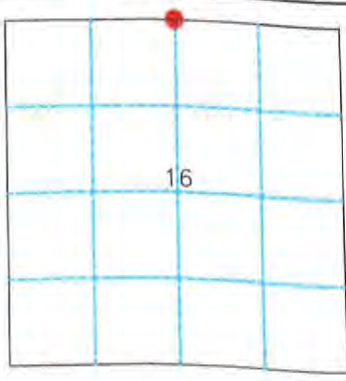
**11-I**

T 4 S R 3 E 2nd Mer. County Harrison State Indiana

$\frac{1}{4}$  Corner common to Sections 9 and 16

EXISTING SURVEYS

Original Government Survey	Original Evidence Found
Year surveyed <u>N/A</u> Original monument _____ <small>(wood post, stone, pile of stones, etc.)</small>	Year of search _____ By _____ Monument found _____
<p style="text-align: center;">Bearing Trees</p> Species _____ Diameter _____ Bearing _____ Distance _____	<p style="text-align: center;">Original Bearing Trees Found</p> Species _____ Diameter _____ Bearing _____ Distance _____
Subsequent Corner Restoration	Evidence of Subsequent Corner Restoration Found
Year surveyed _____ By _____ Where filed or recorded _____ Monument _____ <small>(Original, concrete post, iron rod, etc...)</small>	Year of search <u>2009</u> By <u>VHM</u> See report.
<p style="text-align: center;">Bearing Trees, Reference Objects</p> Species _____ Diameter _____ Bearing _____ Distance _____	



Relation of Evidence to Record Features Along Section Lines

Section line to sections \_\_\_\_\_  
 Object \_\_\_\_\_  
 Record Distance \_\_\_\_\_  
 Measured Distance \_\_\_\_\_

Other Evidence

Describe evidence of use and occupation such as roads, fences, clearings, timber cutting lines, plantations, etc... Cite source of testimony, If any. \_\_\_\_\_

Perpetuation Record

Monument and accessories established. Include brief description of area. Set #5 by 30" with 3/4" aluminum disk, 10' South of centerline of old East-West Road. Set Carsonite Post 0.6' North.

Sugar	Sugar W/sign	Sugar
9"	10"	30"
N 71° W	N 78° E	S 22° W
23.5'	1.3'	5.4'
MN + 1.0'	MN + 1.0'	MN + 1.0'
S. Side	N. Side	W. Side

- At time of search:
- Did you have the record description? Yes X No \_\_\_\_\_
  - How was search area located? pacing, chaining, photo, maps, etc. SURVEYING
  - Man hours spent in search N/A
  - Do you think additional search might recover evidence? Yes \_\_\_\_\_ No X
  - Signature V.H.M.

Certified corner restoration certificate prepared Yes \_\_\_\_\_ No X  
 Filed in county records at \_\_\_\_\_ Date \_\_\_\_\_ County No. \_\_\_\_\_  
 Identified on aerial photo No. \_\_\_\_\_ Which is filed at \_\_\_\_\_

HARRISON TOWNSHIP

11-J

CORNER 11-J TOWNSHIP 4 S RANGE 3 E EAST 2ND PRINCIPAL MERIDIAN

LOCATION	DESCRIPTION OF		DISTANCE FROM CORNER?	BEARING FROM CORNER	DATE CHECKED	CHECKED BY	FIELD BOOK	REMARKS
	MONUMENT	REFERENCE						
CN 1/16: Corn. Sec. 16	3/4 Pipe	13" Sugar w/sign	4.0'	N 89 W	5/09	TOB	6/43	Carsonite Post 0.6' E
		19" Sugar	12.9'	S 14 W				
		22" Ash	9.3'	S 62 E				

11-J

**CORNERS RECOVERED CONTINUED**

**J-10 NW 1/16th CORNER IN SECTION 16, T-4-S, R-3-E**  
 RECOVERED SANDSTONE OUT OF GROUND AND A 3/4" PIPE AT A 90° FENCE CORNER. THE STONE WAS RESET PER THE COUNTY SURVEYOR'S 1989 RECOVERY NOTES. THE STONE IS 0.2' BY 0.5' PROJECTING 0.4'. A CAIRN OF ROCKS WERE PLACED AROUND THE STONE. THIS IS CORNER "I" PER 1890 LEGAL SURVEY, SEE LEGAL SURVEY BOOK 1, PAGE 152. ACCESSORIES ESTABLISHED:  
 CARSONITE POST, SOUTH, 0.5'  
 BEECH 5" W/SIGN, N64°E, 17.2', MAG NAIL 1.5' UP ON S SIDE  
 TRIPLE POPLAR W/FORK W/OLD SIGN, S8°E, 7.9' MAG NAIL 1.5' UP ON NW SIDE  
 POPLAR 28", N5°E, 15.6', MAG NAIL 1.5' UP ON E SIDE  
 FENCE POST W/OLD SIGN, S60°W, 0.8', MAG NAIL 0.6' UP ON E SIDE

**J-11 CN 1/16th CORNER IN SECTION 16, T-4-S, R-3-E**  
 RECOVERED 3/4" PIPE PROJECTING 0.8'. THIS CORNER WAS SET DURING 1989 SURVEY BY LS131, JOB #89-3786. A RECORDED COPY OF THIS SURVEY WAS NOT DISCOVERED DURING RESEARCH FOR THIS SURVEY. THIS IS CORNER "I" PER 1890 LEGAL SURVEY, SEE LEGAL SURVEY BOOK 1, PAGE 152. THE 1890 SURVEY CALLS FOR A ROCK AT THIS CORNER. BASED ON THE MEASUREMENTS CITED IN BOTH SURVEYS AND THE VERY OLD AND DISTINCT CULTURAL FEATURES IN THE VICINITY, THE PIPE WAS ACCEPTED AS THE TRUE CORNER. THE 1989 SURVEY IS ATTACHED HERETO AND MADE A PART HERE OF AS EXHIBIT "D". ACCESSORIES ESTABLISHED:  
 CARSONITE POST, EAST, 0.6'  
 SUGAR 13" W/SIGN, N89°W, 4.0' MAG NAIL 1' UP IN N SIDE  
 SUGAR 19", S14°W, 12.9', MAG NAIL 1' UP IN E SIDE  
 ASH 22", S62°E, 9.3', MAG NAIL 1' UP IN SW SIDE

**J-13 NORTH 1/16th CORNER TO SECTIONS 15 & 16, T-4-S, R-3-E**  
 RECOVERED RAILROAD SPIKE OF UNKNOWN ORIGIN 0.8' DEEP IN WINDELL LANE. THE CORNER IS 5' S OF THE NEP. THE POSITION OF THIS CORNER IS SUPPORTED BY MEASUREMENTS TO ADJACENT CORNERS, VERY OLD AND DISTINCT CULTURAL EVIDENCE IN THE VICINITY AND TESTIMONY BY LONG TIME LOCAL RESIDENTS. A MAG HUB WAS SET IN A CONCRETE PLUG OVER THE CORNER. ACCESSORIES ESTABLISHED:  
 UTILITY POLE, S78°W, 55.5', MAG NAIL 1' UP IN N SIDE  
 UTILITY POLE W/SIGN, N8°E, 23.2', MAG NAIL 1' UP IN W SIDE  
 UTILITY POLE, S68°E, 77.7', MAG NAIL 1' UP IN N SIDE  
 MAIL BOX POST, S10°E, 18.3'

**K-6 CW 1/16th CORNER IN SECTION 17, T-4-S, R-3-E**  
 RECOVERED LIMESTONE PER LOCAL DEEDS AND 2002 SURVEY BY LS131, JOB #02-8847. A RECORDED COPY THIS SURVEY WAS NOT RECOVERED DURING RESEARCH FOR THIS PROJECT, THE SURVEY COPY USED IS FROM THE AUDITOR'S OFFICE, WHICH IS ATTACHED HERETO AND MAD A PART HEREOF AS EXHIBIT "E". THE STONE IS OF UNKNOWN ORIGIN BUT CITED IN SEVERAL OLD DEEDS IN THIS VICINITY. THE STONE IS 0.5' BY 0.3' PROJECTING 0.6', WITH A #5SPC-LS131 ON THE EAST SIDE AT A FENCE CORNER.

**SURVEY FOR:**  
 THOMAS O. RUBE  
 HARRISON COUNTY SURVEYOR  
 300 N. CAPITOL AVENUE  
 CORYDON, IN 47112

**SURVEY BY:**  
 MCCAULEY & COMPANY, INC., P.S.C.  
 PROFESSIONAL LAND SURVEYORS  
 P.O. BOX 39  
 ELIZABETH, IN 47117-0039  
 812-969-2186  
 E-mail mccauleypsc@verizon.net

JOB 10809

11-J

HARRISON COUNTY SURVEYOR 6/43  
CORNER MONUMENT RECOVERY & REFERENCE RECORD

TOWNSHIP: 4 RANGE: 3 SECTION: 16

CORNER REF. ID: 11-J  
DATE: / /

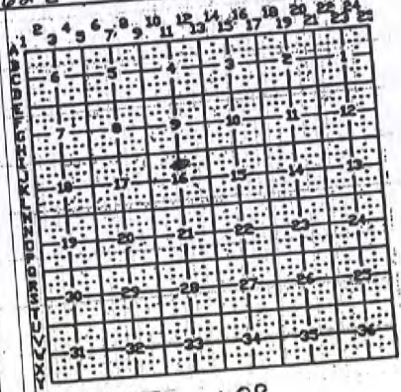
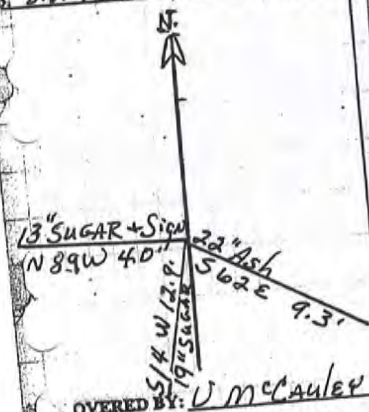
MONUMENT INFORMATION

LOCATION: CN 1/4 CORNER SEC 16  
DESCRIPTION: 3/4" pipe Projecting 0.8'  
TYPICAL DISTINGUISHING CHARACTERISTICS:  
CARBONITE POST 0.6' EAST

REMOVED OR PLACED: ( ) YES DATE: / /

WITNESS MARKERS

TYPE	SIGN	BLAZE	ADDITION DESCRIPTION
1 13" SUGAR W/SIGN	( )	( )	N 89W 4.0'
2 19" SUGAR	( )	( )	S 14 W 12.9'
3 22" Ash	( )	( )	S 62 E 9.3'



COVERED BY: J McCauley

DATE: 5 / 10 / 09  
DATE: / /  
DATE: / /

WITNESSED BY: TOB

DATE: 7 / 28 / 09  
DATE: / /  
DATE: / /

RECORDED IN PERPETUATION RECORDS BOOK:  
Thomas O. Bube

DATE: 7 / 30 / 09

Point No. 306

11-J

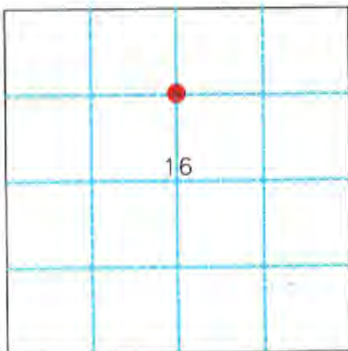
Harrison Co. No. J-11

T 4 S R 3 E 2nd Mer. County Harrison State Indiana

CN 1/16 Corner common to Section 16 and \_\_\_\_\_

EXISTING SURVEYS

Original Government Survey	Original Evidence Found
Year surveyed <u>N/A</u> Original monument _____ <small>(wood post, stone, pile of stones, etc.)</small> <hr/> Bearing Trees Species _____ Diameter _____ Bearing _____ Distance _____	Year of search _____ By _____ Monument found _____ <hr/> Original Bearing Trees Found Species _____ Diameter _____ Bearing _____ Distance _____
Subsequent Corner Restoration	Evidence of Subsequent Corner Restoration Found
Year surveyed _____ By _____ Where filed or recorded _____ Monument _____ <small>(Original, concrete post, iron rod, etc.)</small> <hr/> Bearing Trees, Reference Objects Species _____ Diameter _____ Bearing _____ Distance _____	Year of search <u>2009</u> By <u>VHM</u> See report.



Relation of Evidence to Record Features Along Section Lines

Section line to sections \_\_\_\_\_  
 Object \_\_\_\_\_  
 Record Distance \_\_\_\_\_  
 Measured Distance \_\_\_\_\_

Other Evidence

Describe evidence of use and occupation such as roads, fences, clearings, timber cutting lines, plantations, etc... Cite source of testimony, If any. \_\_\_\_\_

Perpetuation Record

Monument and accessories established. Include brief description of area. Recovered 3/4" pipe, projecting 0.8'. Set Carsonite Post 0.6' East.

Sugar W/sign	Sugar	Ash
13"	19"	22"
N 89° W	S 14° W	S 62° E
4.0'	12.9'	9.3'
MN + 1.0'	MN + 1.0'	MN + 1.0'
N. Side	E. Side	SW. Side

At time of search:

1. Did you have the record description? Yes X No \_\_\_\_\_
2. How was search area located?  
pacing, chaining, photo, maps, etc. SURVEYING
3. Man hours spent in search N/A
4. Do you think additional search might recover evidence? Yes \_\_\_\_\_  
No X
5. Signature Vick H. M.

Certified corner restoration certificate prepared Yes \_\_\_\_\_ No X  
 Filed in county records at \_\_\_\_\_ Date \_\_\_\_\_ County No. \_\_\_\_\_  
 Identified on aerial photo No. \_\_\_\_\_ Which is filed at \_\_\_\_\_



HARRISON

COUNTY

CORNER 11-K

TOWNSHIP 4 S

RANGE 3 E

EAST

2ND

PRINCIPAL MERIDIAN

LOCATION	DESCRIPTION OF		DISTANCE FROM CORNER	BEARING FROM CORNER	DATE CHECKED	CHECKED BY	FIELD BOOK	REMARKS
	MONUMENT	REFERENCE						
Center $\frac{1}{4}$ Corn. Sec 16	Sand stone 0.4'x0.5' w/HCSS and 3/4 pipe on South side	12" Maple	9.9'	N 70 W	5/09	TOB	6/44	
		9" Maple	12.5'	N 36 E				
		14 W. Oak	7.8'	S 72 E				
		18" Maple	13.0'	S 15 E				

**CORNERS RECOVERED CONTINUED**

**K-6 CW 1/16th CORNER IN SECTION 17, T-4-S, R-3-E CONTINUED  
THE POSITION OF THE STONE IS SUPPORTED BY MEASUREMENTS TO  
ADJACENT CORNERS AND VERY OLD AND DISTINCT CULTURAL FEATURES IN  
THE VICINITY. THE STONE WAS LEFT IN PLACE AS RECOVERED. ACCESSORIES  
ESTABLISHED:**

- CARSONITE POST, WEST, 0.5'**
- SUGAR 9", N25°E, 5.5', MAG NAIL 1' UP IN SE SIDE**
- SUGAR 9" W/SIGN, S39°E, 6.3', MAG NAIL 1' UP IN SW SIDE**
- FENCE POST, N84°W, 1.2', MAG NAIL 1' UP IN N SIDE**

**K-11 CENTER QUARTER CORNER IN SECTION 16, T-4-S, R-3-E  
RECOVERED SANDSTONE WITH OLD STYLE STEEL POST AND YELLOW  
HARRISON COUNTY SURVEYOR'S SIGN. THE STONE IS 0.4' BY 0.5' PROJECTING  
0.2', WITH A 3/4" PIPE 0.3' SOUTH. THE STONE WAS LEFT IN PLACE AS  
RECOVERED. SEE EXHIBIT "D". ACCESSORIES ESTABLISHED:**

- MAPLE 12", N70°W, 9.9', MAG NAIL 1' UP IN S SIDE**
- MAPLE 9", N36°E, 12.5' (SLOPE), MAG NAIL 1' UP IN SE SIDE**
- W. OAK 14", S72°E, 7.8', MAG NAIL 1' UP IN N SIDE**
- MAPLE 18", S15°E, 13.0', MAG NAIL 1' UP IN E SIDE**

**M-3 QUARTER CORNER TO SECTIONS 18 & 19, T-4-S, R-3-E  
STONE PER 2006 SURVEY BY LS451 AND OF RECORD AS INSTRUMENT  
#200701409. SEVERAL MONUMENTS DEPICTED ON THIS SURVEY WERE TIED TO  
VERIFY THE POSITION OF THIS STONE. NO ACCESSORIES ESTABLISHED THIS  
SURVEY.**

**M-9 SECTION CORNER TO SECTIONS 16, 17, 20 & 21, T-4-S, R-3-E  
RECOVERED VERY OLD, RUSTED AND DETERIORATED PIPE PER  
TESTIMONY BY SEVERAL LONG TIME LOCAL RESIDENTS. A MAG NAIL BY  
LS365 WAS RECOVERED, S15°E, 14' FROM THE PIPE. THE 2005 SURVEY  
PERFORMED BY LS365 CITES "SET MAG NAIL OVER SPIKE-----HCSM." NO  
REFERENCE FOR THE CORNER WAS PROVIDED BY THE COUNTY SURVEYOR  
AND NO RECORDED SURVEY WAS DISCOVERED DURING RESEARCH FOR THIS  
SURVEY. WE USED THE AUDITOR'S FILES FOR A COPIES OF LS365 SURVEYS.  
THE MAG NAIL WAS REMOVED AND WE DID NOT FIND A SPIKE UNDER THE  
LS365 NAIL. THE 2005 LS365 SURVEY WAS COMPARED WITH A 2007 SURVEY BY  
LS365 AND THE SURVEYS WOULD CREATE A HIATUS OF OVER 16' BETWEEN  
THEM. THEREFORE THE LS365 MAG NAIL WAS DISREGARDED. THE POSITION  
OF THE PIPE WAS VERIFIED BY MEASUREMENTS TO ADJACENT CORNER  
MONUMENTS AND BY VERY OLD AND DISTINCT CULTURAL FEATURES IN  
THIS VICINITY. THE PIPE WAS REPLACED WITH A #5 BY 30" REBAR W/ 3/4"  
ALUMINUM CAP STAMPED TO DEPICTED THE CORNER POSITION. THE CORNER  
POSITION IS 5' N OF THE NEP OF FAIRVIEW CHURCH ROAD. ACCESSORIES  
ESTABLISHED:**

- CARSONITE POST, NORTH, 0.5'**
- SASSAFRAS 15" W/SIGN & OLD WIRE, N4°W, 12.5', MAG NAIL 1' UP IN E SIDE**
- FLUSH HYDRANT, N33°E, 23.3'**
- TELEPHONE PEDESTAL POLE, S84°E, 57.8', MAG NAIL 1' UP IN N SIDE**
- R. OAK 9", S28°W, 39.2', MAG NAIL 1' UP IN NW SIDE**

**SURVEY FOR:  
THOMAS O. BUBE  
HARRISON COUNTY SURVEYOR  
300 N. CAPITOL AVENUE  
CORYDON, IN 47112**

**SURVEY BY:  
MCCAULEY & COMPANY, INC., P.S.C.  
PROFESSIONAL LAND SURVEYORS  
P.O. BOX 39  
ELIZABETH, IN 47117-0039  
812-969-2186  
E-mail mccauleypsc@verizon.net**

JOB 10809

11-K

HARRISON COUNTY SURVEYOR 6/44  
CORNER MONUMENT RECOVERY & REFERENCE RECORD

TWNSHIP: 4 RANGE: 3 SECTION: 16

CORNER REF. LD.: 11-K  
DATE: 5/1/09

MONUMENT INFORMATION

LOCATION: CENTER 1/4 CORNER SEC 16

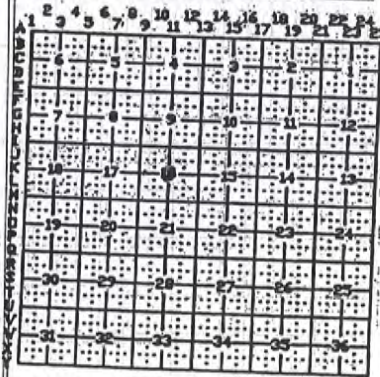
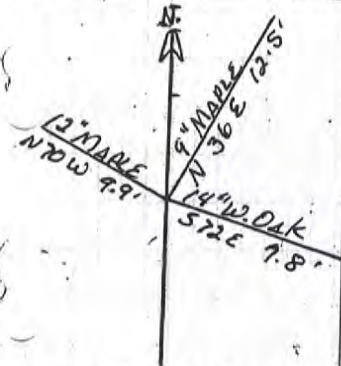
DESCRIPTION: SANDSTONE 0.4' x 0.5' projecting 0.2' with  
H.C.S. SIGN + 3/4" P.I.P.E ON SOUTH SIDE OF STONE

ADDITIONAL DISTINGUISHING CHARACTERISTICS:

SIGN PLACED: ( ) YES DATE: 1/1

WITNESS MARKERS

TYPE	SIGN	BLAZE	ADDITION DESCRIPTION
1. 12" MAPLE	( )	( )	N 70 W 9.9'
2. 9" MAPLE	( )	( )	N 36 E 12.5' slope
3. 14" W. DAK	( )	( )	S 72 E 7.8'



COVERED BY: V. McQUINCY

DATE: 5/1/09  
DATE: / /  
DATE: / /

RECORDED BY: TOB

DATE: 7/28/09  
DATE: / /  
DATE: / /

RECORDED IN PERPETUATION RECORDS BOOK:

Thomas O. Bate

DATE: 7/30/09

LAND CORNER RECORD  
(RECTANGULAR SURVEYS)


Point No. 302

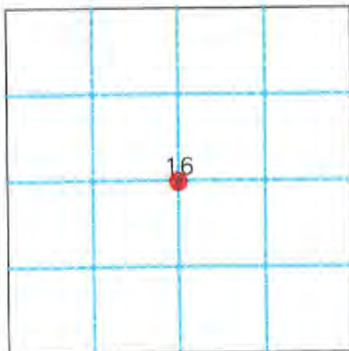
Harrison Co. No. K-11 11-K

T 4 S R 3 E 2nd Mer. County Harrison State Indiana

Center 1/4 Corner common to Section 16 and \_\_\_\_\_

EXISTING SURVEYS

Original Government Survey	Original Evidence Found
Year surveyed <u>N/A</u> Original monument _____ <small>(wood post, stone, pile of stones, etc.)</small>	Year of search _____ By _____ Monument found _____
Bearing Trees	Original Bearing Trees Found
Species _____ Diameter _____ Bearing _____ Distance _____	Species _____ Diameter _____ Bearing _____ Distance _____
Subsequent Corner Restoration	Evidence of Subsequent Corner Restoration Found
Year surveyed _____ By _____ Where filed or recorded _____ Monument _____ <small>(Original, concrete post, iron rod, etc...)</small>	Year of search <u>2009</u> By <u>VHM</u> <u>Recovered sandstone 0.4' X 0.5', projecting 0.2' with Harrison County Surveyor sign and 3/4" pipe on South side of stone.</u>
Bearing Trees, Reference Objects	
Species _____ Diameter _____ Bearing _____ Distance _____	



Relation of Evidence to Record Features Along Section Lines

Section line to sections \_\_\_\_\_  
 Object \_\_\_\_\_  
 Record Distance \_\_\_\_\_  
 Measured Distance \_\_\_\_\_

Other Evidence

Describe evidence of use and occupation such as roads, fences, clearings, timber cutting lines, plantations, etc... Cite source of testimony, If any. \_\_\_\_\_

Perpetuation Record

Monument and accessories established. Include brief description of area. The stone was left in place as recovered.

Maple	Maple	W. Oak	Maple
12"	9"	14"	18"
N 70° W	N 36° E	S 72° E	S 15° E
9.9'	12.5' slope	7.8'	13.0'
MN + 1.0'	MN + 1.0'	MN + 1.0'	MN + 1.0'
S. Side	SE. Side	N. Side	E. Side

- At time of search:
- Did you have the record description? Yes  No \_\_\_\_\_
  - How was search area located?  
pacing, chaining, photo, maps, etc. SURVEYING
  - Man hours spent in search N/A
  - Do you think additional search might recover evidence? Yes \_\_\_\_\_  
No
  - Signature Vit H.M.

Certified corner restoration certificate prepared Yes \_\_\_\_\_ No   
 Filed in county records at \_\_\_\_\_ Date \_\_\_\_\_ County No. \_\_\_\_\_  
 Identified on aerial photo No. \_\_\_\_\_ Which is filed at \_\_\_\_\_

HARRISON

COUNTY

RANGE 3 E EAST 2ND PRINCIPAL MERIDIAN

11-L

CORNER 11-L TOWNSHIP 4 S

LOCATION	DESCRIPTION OF		DISTANCE FROM CORNER	BEARING FROM CORNER	DATE CHECKED	CHECKED BY	FIELD BOOK	REMARKS
	MONUMENT	REFERENCE						
CS 1/16 Corn. Common to Sec. 16	# 5 W/disk	Fence Corner Postw/sign	4.3'	S 57 W	5/09	TOB	6/45	Carsonite Post 0.5' N
		14"Hackberry	8.5'	N 2 E				
		8"Hackberry	4.3'	S 68 E				

11-L

**CORNERS ESTABLISHED CONTINUED**

**L-11 CENTERSOUTH SIXTEENTH CORNER IN SECTION 16, T-4-S, R-3-E**  
ESTABLISHED CORNER POSITION ON LINE AND EQUIDISTANT BETWEEN  
QUARTER SECTION CORNER & CENTER QUARTER CORNER TO THE NORTH &  
SOUTH (SEE M-11 & K-11). THE POSITION OF THIS CORNER IS SUPPORTED BY  
VERY OLD AND DISTINCT CULTURAL FEATURES IN THE VICINITY. SET #5  
BY 30" PIN W/3/4" ALUMINUM DISK STAMPED TO DEPICT THE CORNER  
POSITION. ACCESSORIES ESTABLISHED:  
CARSONITE POST, NORTH, 0.5'  
FENCE CORNER POST W/SIGN, S57°W, 4.3', MAG NAIL 1' UP ON N SIDE  
HACKBERRY 14", N2°E, 8.5', MAG NAIL 1' UP ON E SIDE  
HACKBERRY 8" W/WIRE, S68°E, 4.3', MAG NAIL 1' UP ON N SIDE

**M-6 WEST SIXTEENTH CORNER TO SECTIONS 17 & 20, T-4-S, R-3-E**  
ESTABLISHED CORNER POSITION ON LINE AND EQUIDISTANT BETWEEN  
SECTION CORNER & QUARTER CORNER TO THE EAST & WEST (SEE M-5 & M-7).  
THE POSITION OF THIS CORNER IS SUPPORTED BY VERY OLD AND  
DISTINCT CULTURAL FEATURES IN THE VICINITY. SET #5 BY 30" PIN W/3/4"  
ALUMINUM DISK STAMPED TO DEPICT THE CORNER POSITION.  
ACCESSORIES ESTABLISHED:  
CARSONITE POST, WEST, 5'  
POPLAR 29" W/SIGN & WIRE, N18°W, 10.9', MAG NAIL 1' UP ON SW SIDE  
TWIN POPLAR 25", S29°W, MAG NAIL 1' UP ON W SIDE  
BEECH 15", S68°E, 36.1', MAG NAIL 1' UP ON W SIDE  
SPC-LS131, N0°25'E, 3.85'

**M-10 WEST SIXTEENTH CORNER TO SECTIONS 16 & 21, T-4-S, R-3-E**  
ESTABLISHED CORNER POSITION ON LINE AND AT PROPORTIONAL  
DISTANCE BETWEEN SECTION CORNERS RECOVERED TO THE EAST & WEST.  
(SEE M-9 & M-13). THE POSITION OF THIS CORNER IS SUPPORTED BY VERY  
OLD AND DISTINCT CULTURAL FEATURES IN THE VICINITY. SET #5 BY 30"  
PIN W/3/4" ALUMINUM DISK STAMPED TO DEPICT THE CORNER POSITION.  
THE MONUMENT IS 1' N OF THE NEP OF FAIRVIEW CHURCH ROAD.  
ACCESSORIES ESTABLISHED:  
CARSONITE POST, NORTH, 5'  
FENCE POST, N44°E, 10.1' (SLOPE), MAG NAIL 1' UP ON W SIDE  
TELEPHONE PEDESTAL, N14°W, 6.8'  
FENCE POST, N48°W, 22.6', MAG 1' UP ON SW SIDE  
FENCE POST W/SIGN, S2°E, 24.4', MAG NAIL 1' UP ON W SIDE

**SURVEY FOR:**  
THOMAS O. BUBB  
HARRISON COUNTY SURVEYOR  
300 N. CAPITOL AVENUE  
CORYDON, IN 47112

**SURVEY BY:**  
MCCAULEY & COMPANY, INC., P.S.C.  
PROFESSIONAL LAND SURVEYORS  
P.O. BOX 39  
ELIZABETH, IN 47117-0039  
812-969-2186  
E-mail mccauleypsc@verizon.net

JOB 10809

LAND CORNER RECORD  
(RECTANGULAR SURVEYS)

Point No. 452


Harrison Co. No. L-11

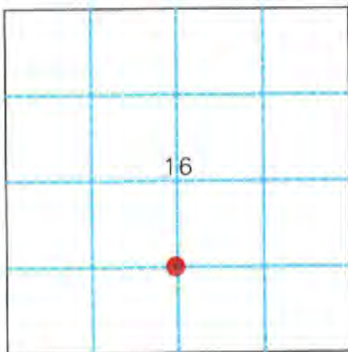
11-L

T 4 S R 3 E 2nd Mer. County Harrison State Indiana

CS 1/16 Corner common to Section 16 and \_\_\_\_\_

EXISTING SURVEYS

Original Government Survey	Original Evidence Found
Year surveyed <u>N/A</u> Original monument _____ <small>(wood post, stone, pile of stones, etc.)</small> <hr/> <p style="text-align: center;">Bearing Trees</p> Species _____ Diameter _____ Bearing _____ Distance _____	Year of search _____ By _____ Monument found _____ <hr/> <p style="text-align: center;">Original Bearing Trees Found</p> Species _____ Diameter _____ Bearing _____ Distance _____
Subsequent Corner Restoration	Evidence of Subsequent Corner Restoration Found
Year surveyed _____ By _____ Where filed or recorded _____ Monument _____ <small>(Original, concrete post, iron rod, etc...)</small> <hr/> <p style="text-align: center;">Bearing Trees, Reference Objects</p> Species _____ Diameter _____ Bearing _____ Distance _____	Year of search _____ By _____ 



Relation of Evidence to Record Features Along Section Lines

Section line to sections \_\_\_\_\_  
 Object \_\_\_\_\_  
 Record Distance \_\_\_\_\_  
 Measured Distance \_\_\_\_\_

Other Evidence

Describe evidence of use and occupation such as roads, fences, clearings, timber cutting lines, plantations, etc... Cite source of testimony, If any. \_\_\_\_\_

Perpetuation Record

Monument and accessories established. Include brief description of area. Set #5 by 30" with 3/4" aluminum disk.

Fence Corner	Hackberry	Hackberry	Carsonite
Post W/sign	14"	8"	Post
S 57° W	N 2° E	S 68° E	North
4.3'	8.5'	4.3'	0.5'
MN + 1.0'	MN + 1.0'	MN + 1.0'	
N. Side	E. Side	N. Side	

At time of search:

1. Did you have the record description? Yes X No \_\_\_\_\_
2. How was search area located? \_\_\_\_\_  
 pacing, chaining, photo, maps, etc. SURVEYING
3. Man hours spent in search N/A
4. Do you think additional search might recover evidence? Yes \_\_\_\_\_  
 No X
5. Signature Vick H.M.

Certified corner restoration certificate prepared Yes \_\_\_\_\_ No X  
 Filed in county records at \_\_\_\_\_ Date \_\_\_\_\_ County No. \_\_\_\_\_  
 Identified on aerial photo No. \_\_\_\_\_ Which is filed at \_\_\_\_\_

11-L

6/45

HARRISON COUNTY SURVEYOR  
CORNER MONUMENT RECOVERY & REFERENCE RECORD

TWNSHIP: 4 RANGE: 3 SECTION: 16

CORNER REF. LD.: 11-L  
DATE: 5-1 / 09

MONUMENT INFORMATION

LOCATION: C 5 1/10

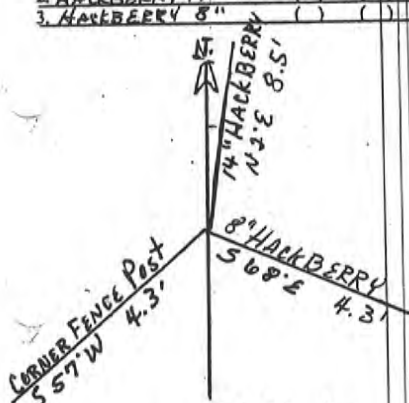
DESCRIPTION: #5 w/disk

ADDITIONAL DISTINGUISHING CHARACTERISTICS: \_\_\_\_\_

SIGN PLACED: ( ) YES DATE: 1 / 1

WITNESS MARKERS

TYPE	SIGN	BLAZE	ADDITION DESCRIPTION
1. CORNER FENCE Post	(X)	( )	S 57° W 4.3'
2. HACKBERRY 14"	( )	( )	N 2° E 8.5'
3. HACKBERRY 8"	( )	( )	S 68° E 4.3'



1	2	3	4	5	6	7	8	9	10	11	12	13	14	15	16	17	18	19	20	21	22	23	24
25	26	27	28	29	30	31	32	33	34	35	36	37	38	39	40	41	42	43	44	45	46	47	48
49	50	51	52	53	54	55	56	57	58	59	60	61	62	63	64	65	66	67	68	69	70	71	72
73	74	75	76	77	78	79	80	81	82	83	84	85	86	87	88	89	90	91	92	93	94	95	96
97	98	99	100																				

RECOVERED BY: V. McCauley

DATE: 5-1 / 09  
DATE: / /  
DATE: / /

REFERENCED BY: TOB

DATE: 7-28 / 09  
DATE: / /  
DATE: / /

RECORDED IN PERPETUATION RECORDS BOOK:  
BY: Thomas D. Bube

DATE: 7-30 / 09



HARRISON COUNTY

HARRISON

11-M

CORNER 11-M

TOWNSHIP 4 S

RANGE 3 E

EAST

2ND

PRINCIPAL MERIDIAN

LOCATION	DESCRIPTION OF		DISTANCE FROM CORNER	BEARING FROM CORNER	DATE CHECKED	CHECKED BY	FIELD BOOK	REMARKS
	MONUMENT	REFERENCE						
¼ Corner to Sec 16-21	#5 x 12" pin 0.6' deep Mag nail/pin	Fence Corn. w/ sign	19.4'	N 10 E	5/09	TOB	6/32	
		28" Maple	44.5'	S 26 W				
		Util. Pole Tele Ped	20.9'	S 6 E				

11-M  
**CORNERS RECOVERED CONTINUED**

**M-11 QUARTER CORNER TO SECTIONS 16 & 21, T-4-S, R-3-E**  
RECOVERED ROAD NAIL OF UNKNOWN ORIGIN IN FAIRVIEW CHURCH ROAD, WITH FENCING TO THE NORTH & SOUTH. THE POSITION OF THIS CORNER WAS VERIFIED BY MEASUREMENTS TO ADJACENT CORNERS. THE NAIL WAS REPLACED WITH A #5 BY 1' STEEL PIN SET 0.6' DEEP, WITH A MAG NAIL SET IN A CONCRETE PLUG OVER THE PIN. ACCESSORIES ESTABLISHED:  
FENCE CORNER W/SIGN, N10°E, 19.4', MAG NAIL 1' UP IN W SIDE  
MAPLE 28", S26°W, 44.5'  
TELEPHONE PEDESTAL POLE, S 6°E, 20.9', MAG NAIL 1' UP IN W SIDE

**M-13 SECTION CORNER TO SECTIONS 15, 16, 21 & 22, T-4-S, R-3-E**  
RECOVERED RAILROAD SPIKE 0.2' DEEP IN THE INTERSECTION OF HEIDELBERG ROAD AND FAIRVIEW CHURCH ROAD. IN MY OPINION THE RAILROAD SPIKE WAS SET BY LS131. THE POSITION OF THIS CORNER IS SUPPORTED BY MEASUREMENTS TO ADJACENT CORNERS AND VERY OLD AND DISTINCT CULTURAL FEATURES IN THE VICINITY. SEE SURVEYS RECORDED IN SURVEY BOOK 4, PAGE 28 AND INSTRUMENT NUMBERS 200503223, 200603719 & 200700670. A MAG NAIL WAS SET IN A CONCRETE PLUG OVER THE MONUMENT. ACCESSORIES ESTABLISHED:  
TELEPHONE PEDESTAL, S20°W, 37.2'  
UP W/SIGN, N24°E, 50.1', MAG NAIL 1' UP ON NW SIDE  
TELEPHONE PEDESTAL, S77°E, 77.0'

**O-7 CENTER QUARTER CORNER IN SECTION 20, T-4-S, R-3-E**  
RECOVERED MAG NAIL NEAR THE CENTERLINE INTERSECTION OF BROWN-CUNNINGHAM ROAD AND DIXIE ROAD. IN MY OPINION THE MAG NAIL WAS SET BY LS131 OR LS365 FOR THE SURVEYS THEY CONDUCTED IN THE SE ¼ OF SECTION 20. A LONGTIME LOCAL RESIDENT REMEMBERS THE CORNER "A LITTLE BIT EAST" FROM THE RECOVERED CORNER. THE POSITION OF THIS CORNER IS SUPPORTED BY MEASUREMENTS TO ADJACENT CORNERS AND VERY OLD AND DISTINCT CULTURAL FEATURES IN THE VICINITY. THE MAG NAIL WAS REPLACED WITH A #5 BY 1' PIN SET 0.6' DEEP AND THE MAG NAIL WAS RESET IN A CONCRETE PLUG OVER THE PIN. ACCESSORIES ESTABLISH:  
UTILITY POLE W/SIGN, N22°E, 41.1', MAG NAIL 1' UP ON W SIDE  
TELEPHONE PEDESTAL W/UP, S72°W, 87.9', MAG NAIL 1' UP IN N SIDE  
STOP SIGN POST, N25°W, 27.9'

**O-9 QUARTER CORNER TO SECTIONS 20 & 21, T-4-S, R-3-E**  
RECOVERED RAILROAD SPIKE 0.15' DEEP, UNDER A ROAD NAIL, 7' S OF NEP OF BROWN-CUNNINGHAM ROAD. LONG TIME LOCAL RESIDENT, MR. BROWN POINTED OUT THE CORNER AND THE OLD SECTION LINE TO THE NORTH. MR. BROWN ALSO REMEMBERED THE CORNER BEING IN THAT VICINITY FOR A LONG TIME. THE CORNER IS SHOWN ON A 1995 SURVEY BY LS131, BUT NO CORNER MONUMENT IS DEPICTED. THE LS131 SURVEY IS OF RECORD IN SURVEY BOOK 2, PAGE 254. THE CORNER IS ALSO SHOWN ON A 2007 SURVEY BY LS365. THE 2007 SURVEY CITES A MASONRY NAIL AND IS RECORDED IN INSTRUMENT #200800992. THE POSITION OF THE RAILROAD SPIKE IS SUPPORTED BY MEASUREMENTS TO ADJACENT CORNERS AND VERY OLD AND DISTINCT CULTURAL FEATURES IN THE VICINITY.

**SURVEY FOR:**  
THOMAS O. BUBE  
HARRISON COUNTY SURVEYOR  
300 N. CAPITOL AVENUE  
CORYDON, IN 47112

**SURVEY BY:**  
MCCAULEY & COMPANY, INC., P.S.C.  
PROFESSIONAL LAND SURVEYORS  
P.O. BOX 39  
ELIZABETH, IN 47117-0039  
812-969-2186  
E-mail mccauleypsc@verizon.net

JOB 10809

Point No. 24

Harrison Co. No. M-11

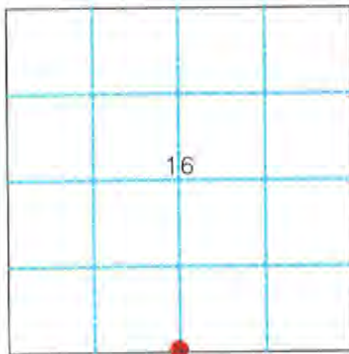
*H-M*

T 4 S R 3 E 2nd Mer. County Harrison State Indiana

1/4 Corner common to Sections 16 and 21

EXISTING SURVEYS

Original Government Survey	Original Evidence Found
Year surveyed <u>1805</u> Original monument <u>Wood Post</u> <small>(wood post, stone, pile of stones, etc.)</small> <hr/> Bearing Trees Species _____ Diameter _____ Bearing _____ Distance _____	Year of search <u>N/A</u> By _____ Monument found _____ <hr/> Original Bearing Trees Found Species _____ Diameter _____ Bearing _____ Distance _____
Subsequent Corner Restoration	Evidence of Subsequent Corner Restoration Found
Year surveyed _____ By _____ Where filed or recorded _____ Monument _____ <small>(Original, concrete post, iron rod, etc...)</small> <hr/> Bearing Trees, Reference Objects Species _____ Diameter _____ Bearing _____ Distance _____	Year of search <u>2009</u> By <u>VHM</u> <u>Recovered nail in Fairview Church Road at very old fence lines to North-South.</u>



Relation of Evidence to Record Features Along Section Lines

Section line to sections \_\_\_\_\_  
 Object \_\_\_\_\_  
 Record Distance \_\_\_\_\_  
 Measured Distance \_\_\_\_\_

Other Evidence

Describe evidence of use and occupation such as roads, fences, clearings, timber cutting lines, plantations, etc... Cite source of testimony, If any. \_\_\_\_\_

Perpetuation Record

Monument and accessories established. Include brief description of area. Replaced nail with #5 X12" pin, 0.6' deep. Set mag nail in concrete plug over pin.

Fence Corner	Maple	Utility Pole
W/sign	28"	Tele. Ped
N 10° E	S 26° W	S 6° E
19.4'	44.5'	20.9'
MN + 1.0'		MN + 1.0'
W. Side		W. Side

At time of search:

- Did you have the record description? Yes X No \_\_\_\_\_
- How was search area located?  
pacing, chaining, photo, maps, etc. SURVEYING
- Man hours spent in search N/A
- Do you think additional search might recover evidence? Yes \_\_\_\_\_  
No X
- Signature Vicki H. M.

Certified corner restoration certificate prepared Yes \_\_\_\_\_ No X  
 Filed in county records at \_\_\_\_\_ Date \_\_\_\_\_ County No. \_\_\_\_\_  
 Identified on aerial photo No. \_\_\_\_\_ Which is filed at \_\_\_\_\_

11-M

6/32

HARRISON COUNTY SURVEYOR  
CORNER MONUMENT RECOVERY & REFERENCE RECORD

TWNSHIP: 4 RANGE: 3 SECTION: 16 CORNER REF. ID.: 11-M  
DATE: 5/1/09

MONUMENT INFORMATION

LOCATION: 1/4 CORNER COMMON TO 16 + 21

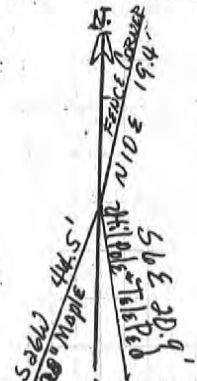
DESCRIPTION: #5 x 1/2" pin, 0.6" deep. MAG Nail in CONCRETE Plug  
OVER PIN.

ADDITIONAL DISTINGUISHING CHARACTERISTICS: \_\_\_\_\_

SIGN PLACED: ( ) YES DATE: 1/1

WITNESS MARKERS

TYPE	SIGN	BLAZE	ADDITION DESCRIPTION
1. FENCE CORNER W/SIGN X	( )	N 10 E	19.4'
2. 2" x 4" MAPLE	( )	S 26 W	44.5'
3. 4" x 4" Pole + Tel Ped	( )	S 6 E	30.9'



	2	3	4	5	6	7	8	9	10	11	12	13	14	15	16	17	18	19	20	21	22	23	24
1																							
2																							
3																							
4																							
5																							
6																							
7																							
8																							
9																							
10																							
11																							
12																							
13																							
14																							
15																							
16																							
17																							
18																							
19																							
20																							
21																							
22																							
23																							
24																							

COVERED BY: V. McCunley

DATE: 5/1/09  
DATE:      
DATE:    

REFERENCED BY: TDB

DATE: 7/23/09  
DATE:      
DATE:    

ORDERED IN PERPETUATION RECORDS BOOK:  
Thomas O. Bube

DATE: 7/27/09

HARRISON

COUNTY

11-0

CORNER 11-0

TOWNSHIP 4 S

RANGE 3 E

EAST

2ND

PRINCIPAL MERIDIAN

LOCATION	DESCRIPTION OF		DISTANCE FROM CORNER	BEARING FROM CORNER	DATE CHECKED	CHECKED BY	FIELD BOOK	REMARKS
	MONUMENT	REFERENCE						
Center 1/4 Corn. Sec. 21	#5x12" pin 0.6' deep mag nail over pin	Fence Corn	15.8'	North	5/09	TOB	6/29	
		Tele Ped	16.1'	N 32 W				
		Fence Corn. w/sign	13.3'	S 1 W				

**CORNERS RECOVERED CONTINUED**

**O-9 QUARTER CORNER TO SECTIONS 20 & 21, T-4-S, R-3-E, CONTINUED**  
 A MAG NAIL WAS SET IN A CONCRETE PLUG OVER THE RAILROAD SPIKE.  
**ACCESSORIES ESTABLISHED:**  
 TELEPHONE PEDESTAL POST W/SIGN, N23°W, 11.8', MAG NAIL 1' UP ON E SIDE  
 FENCE CORNER, N66°W, 41.0', MAG NAIL 1' UP ON SW SIDE  
 STEEL MAIL BOX POST, S49°E, 26.2'

**O-11 CENTER QUARTER CORNER IN SECTION 21, T-4-S, R-3-E**  
 RECOVERED ROAD NAIL AS DEPICTED ON THE ABOVE CITED 2007  
 SURVEY BY LS365. THE NAIL IS 8' SOUTH OF THE NEP OF BROWN-  
 CUNNINGHAM ROAD IN LINE WITH FENCING TO THE NORTH & SOUTH. THE  
 POSITION OF THE NAIL IS SUPPORTED BY MEASUREMENTS TO ADJACENT  
 CORNERS AND VERY OLD AND DISTINCT CULTURAL FEATURES IN THE  
 VICINITY. A #5 BY 1' PIN WAS SET 0.6' DEEP AND A MAG NAIL WAS SET IN A  
 CONCRETE PLUG OVER THE PIN. ACCESSORIES ESTABLISHED:  
 FENCE POST, NORTH, 15.8', MAG NAIL 1' UP ON E SIDE  
 TELEPHONE PEDESTAL, N32°W, 16.1'  
 FENCE CORNER W/SIGN, S1°W, 13.3', MAG NAIL 1' UP ON E SIDE

**O-13 QUARTER CORNER TO SECTIONS 21 & 22, T-4-S, R-3-E**  
 RECOVERED #5 SPC, LS336 IN THE INTERSECTION OF HEIDELBERG ROAD  
 AND BROWN-CUNNINGHAM ROAD. THE PIN IS 2' S & 5' E OF THE CENTERLINE  
 INTERSECTION. THE POSITION OF THE SPC IS SUPPORTED BY  
 MEASUREMENTS TO ADJACENT CORNERS AND VERY OLD AND DISTINCT  
 CULTURAL FEATURES IN THE VICINITY. SEE SURVEYS RECORDED IN SURVEY  
 BOOK 4, PAGE 28 AND INSTRUMENT NUMBERS 200503223, 200603719 &  
 200700670. A MAG NAIL WAS SET IN A CONCRETE PLUG OVER THE  
 MONUMENT. ACCESSORIES ESTABLISHED:  
 TELEPHONE PEDESTAL, S26°E, 30.2'  
 UTILITY POLE W/SIGN, S52°W, 29.9', MAG NAIL 1' UP ON SE SIDE  
 TELEPHONE PEDESTAL, N54°W, 67.6'

**Q-1 WEST SECTION CORNER TO SECTIONS 19 & 30, T-4-S, R-3-E**  
 5/8" CRIMPED TOP PIPE CORNER "E" PER 2002 DNR SURVEY WHICH IS  
 ATTACHED HERETO AND MADE A PART HEREOF AS EXHIBIT "E" AND SW  
 CORNER SECTION 19 PER 2006 SURVEY BY LS451 OF RECORD IN INSTRUMENT  
 #200701409. SEE EXHIBIT "G" FOR ACCESSORIES.

**Q-2 WEST SIXTEENTH CORNER TO SECTIONS 19 & 30, T-4-S, R-3-E**  
 #4 PIN CORNER "F" PER 2002 DNR SURVEY WHICH IS ATTACHED HERETO  
 AND MADE A PART HEREOF AS EXHIBIT "E" AND CORNER ON SOUTH LINE OF  
 SECTION 19 PER 2006 SURVEY BY LS451 OF RECORD IN INSTRUMENT  
 #200701409. SEE EXHIBIT "G" FOR ACCESSORIES.

**Q-9 SECTION CORNER TO SECTIONS 20, 21, 28 & 29, T-4-S, R-3-E**  
 RECOVERED FRACTURED STONE PER 1995 SURVEY BY LS131, SEE  
 SURVEY BOOK 2, PAGE 254 AND 2007 SURVEY BY LS365. SEE INSTRUMENT  
 #200800992. THE STONE IS IN AN E-W FENCE LINE ON THE E SIDE OF A BRACE  
 POST, THE FENCE "T" CORNER IS 8.3' WEST.

**SURVY FOR:**  
 THOMAS O. BUBE  
 HARRISON COUNTY SURVEYOR  
 300 N. CAPITOL AVENUE  
 CORYDON, IN 47112

**SURVEY BY:**  
 MCCAULEY & COMPANY, INC., P.S.C.  
 PROFESSIONAL LAND SURVEYORS  
 P.O. BOX 39  
 ELIZABETH, IN 47117-0039  
 812-969-2186  
 E-mail mccauleypsc@verizon.net

JOB 10809

Point No. 19

Harrison Co. No. 0-11

11-0

T 4 S R 3 E 2nd Mer. County Harrison State Indiana

Center 1/4 Corner common to Section 21 and \_\_\_\_\_

EXISTING SURVEYS

Original Government Survey	Original Evidence Found
Year surveyed <u>N/A</u> Original monument _____ <small>(wood post, stone, pile of stones, etc.)</small> <hr/> <p style="text-align: center;">Bearing Trees</p> Species _____ Diameter _____ Bearing _____ Distance _____	Year of search _____ By _____ Monument found _____ <hr/> <p style="text-align: center;">Original Bearing Trees Found</p> Species _____ Diameter _____ Bearing _____ Distance _____
Subsequent Corner Restoration	Evidence of Subsequent Corner Restoration Found
Year surveyed _____ By _____ Where filed or recorded _____ Monument _____ <small>(Original, concrete post, iron rod, etc.)</small> <hr/> <p style="text-align: center;">Bearing Trees, Reference Objects</p> Species _____ Diameter _____ Bearing _____ Distance _____	Year of search <u>2009</u> By <u>VHM</u> <u>Recovered nail in Brown-Cunningham Road.</u>



Relation of Evidence to Record Features Along Section Lines  
 Section line to sections \_\_\_\_\_  
 Object \_\_\_\_\_  
 Record Distance \_\_\_\_\_  
 Measured Distance \_\_\_\_\_

Other Evidence  
 Describe evidence of use and occupation such as roads, fences, clearings, timber cutting lines, plantations, etc... Cite source of testimony, if any. \_\_\_\_\_

Perpetuation Record  
 Monument and accessories established. Include brief description of area. Replaced nail with #5 X 12" pin, 0.6' deep. Set mag nail in concrete plug over pin..

Fence	Tele. Ped	Fence
Corner		Corner W/sign
North	N 32° W	S 1° W
15.8'	16.1'	13.3'
MN + 1.0'		MN + 1.0'
E. Side		E. Side

- At time of search:
- Did you have the record description? Yes  No \_\_\_\_\_
  - How was search area located? pacing, chaining, photo, maps, etc. SURVEYING
  - Man hours spent in search N/A
  - Do you think additional search might recover evidence? Yes \_\_\_\_\_ No
  - Signature Vick H. M...

Certified corner restoration certificate prepared Yes \_\_\_\_\_ No   
 Filed in county records at \_\_\_\_\_ Date \_\_\_\_\_ County No. \_\_\_\_\_  
 Identified on aerial photo No. \_\_\_\_\_ Which is filed at \_\_\_\_\_





HARRISON

W<sup>TY</sup>

11-Q

CORNER 11-Q

TOWNSHIP 4 S

RANGE 3 E

EAST

2ND

PRINCIPAL MERIDIAN

LOCATION	DESCRIPTION OF		DISTANCE FROM CORNER	BEARING FROM CORNER	DATE CHECKED	CHECKED BY	FIELD BOOK	REMARKS
	MONUMENT	REFERENCE						
1/4 Corner Common to Sec. 21-28	#4 Steel Pin w/cap LS 0131 @ old downed fence corner	18" Hackberry	4.6'	N 18 E	5/09	TOB	6/39	Carsonite Post 0.5' South
		8" Walnut	6.6'	S 27 E				
		10" Sugar w/sign	11/6'	N 77 W				

11-Q

### CORNERS RECOVERED CONTINUED

Q-9 SECTION CORNER TO SECTIONS 20, 21, 28 & 29, T-4-S, R-3-E, CONTINUED THE STONE WAS REPLACED WITH A #5 BY 30" PIN WITH 3/4" ALUMINUM CAP STAMPED TO DEPICTED THE CORNER POSITION. THE POSITION OF THE SPC IS SUPPORTED BY MEASUREMENTS TO ADJACENT CORNERS AND VERY OLD AND DISTINCT CULTURAL FEATURES IN THE VICINITY. ACCESSORIES ESTABLISHED:

- CARSONITE POST, NORTH, 0.6'
- W. OAK 37", N4°E, 35.0'
- B. OAK 13", S23°E, 39.0', MAG NAIL 1' UP IN W SIDE
- FENCE BRACE POST W/SIGN, WEST, 0.5'

Q-11 QUARTER CORNER TO SECTIONS 21 & 28, T-4-S, R-3-E RECOVERED #4 SPC, LS131, PROJECTING 1'. THE MONUMENT IS AT AN OLD DOWN FENCE CORNER POST. THE CORNER IS SHOWN ON THE 1995 SURVEY BY LS131, SEE SURVEY BOOK 2, PAGE 254, BUT NO MONUMENT IS DEPICTED. THE 2007 SURVEY BY LS365 CALLS FOR #5 SPC, PROJECTING 10" AND HCSM. NO REFERENCE FOR THE CORNER WAS PROVIDED BY THE COUNTY SURVEYOR AND NO RECORDED SURVEY WAS DISCOVERED DURING RESEARCH FOR THIS SURVEY. WE USED THE AUDITOR'S FILES FOR A COPIES OF LS365 SURVEYS. THE POSITION OF THE SPC IS SUPPORTED BY MEASUREMENTS TO ADJACENT CORNERS AND VERY OLD AND DISTINCT CULTURAL FEATURES IN THE VICINITY. ACCESSORIES ESTABLISHED:

- CARSONITE POST, SOUTH, 0.5'
- HACKBERRY 18", N18°E, 4.6', MAG NAIL 1' UP ON E SIDE
- WALNUT 8", S27°E, 6.6', MAG NAIL 1' UP ON W SIDE
- SUGAR 10" W/SIGN, N77°W, 11.6', MAG NAIL 1' UP ON S SIDE

Q-13 SECTION CORNER TO SECTIONS 21, 22, 27 & 28, T-4-S, R-3-E RECOVERED AN AXLE 0.7' DEEP IN HEIDELBERG ROAD, 8' EAST OF THE WEST. THE POSITION OF THIS CORNER IS SUPPORTED BY MEASUREMENTS TO ADJACENT CORNERS AND VERY OLD AND DISTINCT CULTURAL FEATURES IN THE VICINITY. SEE SURVEYS RECORDED IN SURVEY BOOK 4, PAGE 28 AND INSTRUMENT NUMBERS 200503223, 200603719 & 200700670. A MAG HUB WAS SET IN A CONCRETE PLUG OVER THE MONUMENT. ACCESSORIES ESTABLISHED:

- TELEPHONE PEDESTAL, N56°E, 22.0'
- CHERRY 8" W/SIGN, N44°W, 21.3' MAG NAIL 1' UP ON SW SIDE
- MAPLE 12", S36°E, 68.5'

S-5 QUARTER CORNER TO SECTIONS 29 & 30, T-4-S, R-3-E CORNER "R" PER 2002 DNR SURVEY WHICH IS ATTACHED HERETO AND MADE A PART HEREOF AS EXHIBIT "G". SEE EXHIBIT "G" FOR ACCESSORIES.

### CORNERS RESTORED

I-5 SECTION CORNER TO SECTIONS 7, 8, 17 & 18, T-4-S, R-3-E RESTORED CORNER POSITION PER CHAPTERS V & VI OF "THE MANUAL OF SURVEYING INSTRUCTIONS". RESTORED CORNER POSITION ON LINE AT PROPORTIONAL DISTANCE BETWEEN VERIFIABLE STONES RECOVERED TO THE EAST & WEST (SEE I-3 & I-7 ABOVE).

SURVEY FOR:  
THOMAS O. BUBE  
HARRISON COUNTY SURVEYOR  
300 N. CAPITOL AVENUE  
CORYDON, IN 47112

SURVEY BY:  
MCCAULEY & COMPANY, INC., P.S.C.  
PROFESSIONAL LAND SURVEYORS  
P.O. BOX 39  
ELIZABETH, IN 47117-0039  
812-969-2186  
E-mail mccauleypsc@verizon.net

JOB 10809