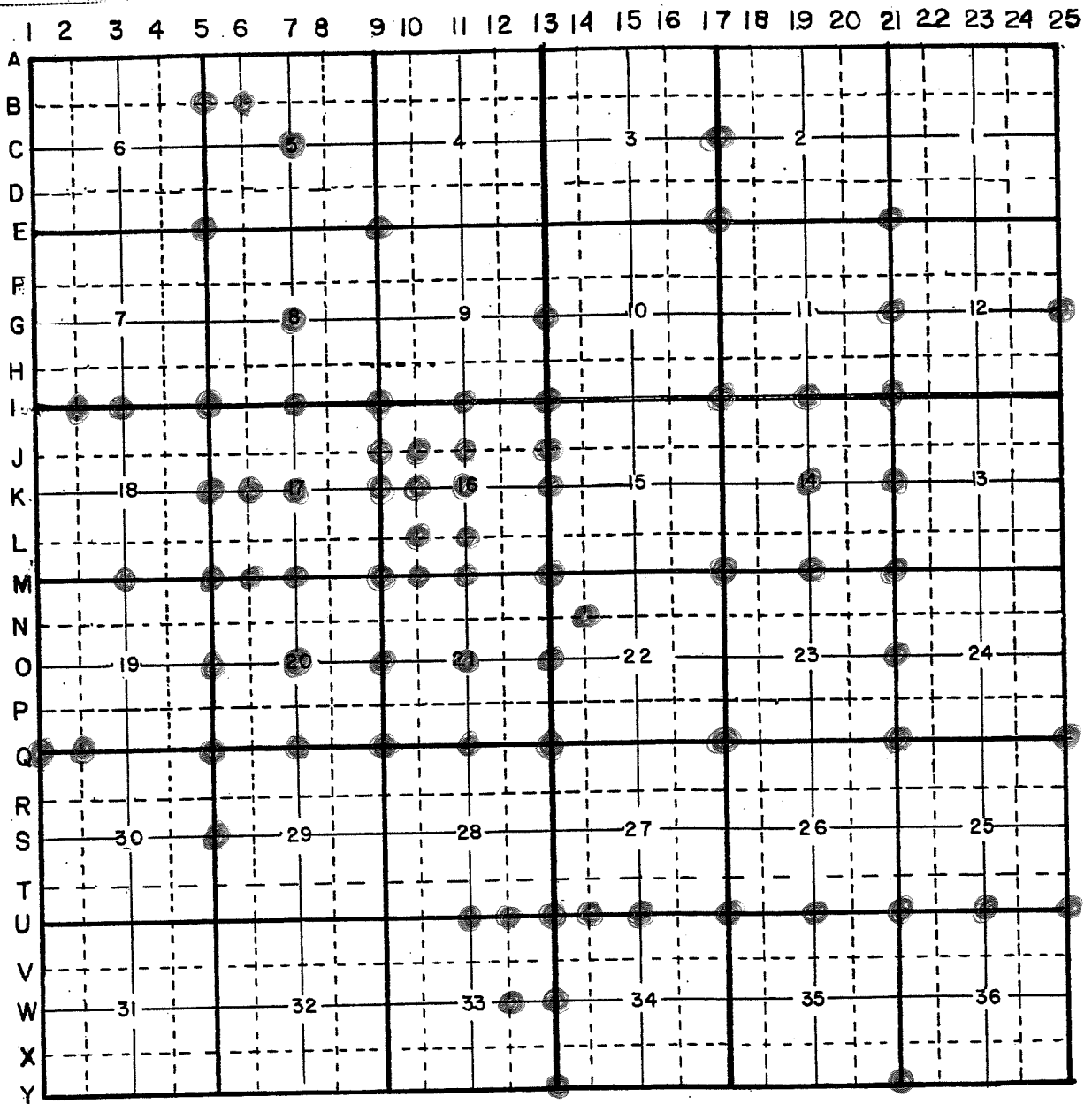


HARRISON COUNTY CORNER REFERENCE

TOWNSHIP 4 SOUTH RANGE 3 EAST



1-Q

CORNERS RECOVERED CONTINUED

O-9 QUARTER CORNER TO SECTIONS 20 & 21, T-4-S, R-3-E, CONTINUED
A MAG NAIL WAS SET IN A CONCRETE PLUG OVER THE RAILROAD SPIKE.
ACCESSORIES ESTABLISHED:
TELEPHONE PEDESTAL POST W/SIGN, N23°W, 11.8', MAG NAIL 1' UP ON E SIDE
FENCE CORNER, N66°W, 41.0', MAG NAIL 1' UP ON SW SIDE
STEEL MAIL BOX POST, S49°E, 26.2'

O-11 CENTER QUARTER CORNER IN SECTION 21, T-4-S, R-3-E
RECOVERED ROAD NAIL AS DEPICTED ON THE ABOVE CITED 2007
SURVEY BY LS365. THE NAIL IS 8' SOUTH OF THE NEP OF BROWN-
CUNNINGHAM ROAD IN LINE WITH FENCING TO THE NORTH & SOUTH. THE
POSITION OF THE NAIL IS SUPPORTED BY MEASUREMENTS TO ADJACENT
CORNERS AND VERY OLD AND DISTINCT CULTURAL FEATURES IN THE
VICINITY. A #5 BY 1' PIN WAS SET 0.6' DEEP AND A MAG NAIL WAS SET IN A
CONCRETE PLUG OVER THE PIN. ACCESSORIES ESTABLISHED:
FENCE POST, NORTH, 15.8', MAG NAIL 1' UP ON E SIDE
TELEPHONE PEDESTAL, N32°W, 16.1'
FENCE CORNER W/SIGN, S1°W, 13.3', MAG NAIL 1' UP ON E SIDE

O-13 QUARTER CORNER TO SECTIONS 21 & 22, T-4-S, R-3-E
RECOVERED #5 SPC, LS336 IN THE INTERSECTION OF HEIDELBERG ROAD
AND BROWN-CUNNINGHAM ROAD. THE PIN IS 2' S & 5' E OF THE CENTERLINE
INTERSECTION. THE POSITION OF THE SPC IS SUPPORTED BY
MEASUREMENTS TO ADJACENT CORNERS AND VERY OLD AND DISTINCT
CULTURAL FEATURES IN THE VICINITY. SEE SURVEYS RECORDED IN SURVEY
BOOK 4, PAGE 28 AND INSTRUMENT NUMBERS 200503223, 200603719 &
200700670. A MAG NAIL WAS SET IN A CONCRETE PLUG OVER THE
MONUMENT. ACCESSORIES ESTABLISHED:
TELEPHONE PEDESTAL, S26°E, 30.2'
UTILITY POLE W/SIGN, S52°W, 29.9', MAG NAIL 1' UP ON SE SIDE
TELEPHONE PEDESTAL, N54°W, 67.6'

Q-1 WEST SECTION CORNER TO SECTIONS 19 & 30, T-4-S, R-3-E
5/8" CRIMPED TOP PIPE CORNER "E" PER 2002 DNR SURVEY WHICH IS
ATTACHED HERETO AND MADE A PART HEREOF AS EXHIBIT "E" AND SW
CORNER SECTION 19 PER 2006 SURVEY BY LS451 OF RECORD IN INSTRUMENT
#200701409. SEE EXHIBIT "G" FOR ACCESSORIES.

Q-2 WEST SIXTEENTH CORNER TO SECTIONS 19 & 30, T-4-S, R-3-E
#4 PIN CORNER "F" PER 2002 DNR SURVEY WHICH IS ATTACHED HERETO
AND MADE A PART HEREOF AS EXHIBIT "E" AND CORNER ON SOUTH LINE OF
SECTION 19 PER 2006 SURVEY BY LS451 OF RECORD IN INSTRUMENT
#200701409. SEE EXHIBIT "G" FOR ACCESSORIES.

Q-9 SECTION CORNER TO SECTIONS 20, 21, 28 & 29, T-4-S, R-3-E
RECOVERED FRACTURED STONE PER 1995 SURVEY BY LS131, SEE
SURVEY BOOK 2, PAGE 254 AND 2007 SURVEY BY LS365. SEE INSTRUMENT
#200800992. THE STONE IS IN AN E-W FENCE LINE ON THE E SIDE OF A BRACE
POST, THE FENCE "T" CORNER IS 8.3' WEST.

SURVY FOR:
THOMAS O. BUBE
HARRISON COUNTY SURVEYOR
300 N. CAPITOL AVENUE
CORYDON, IN 47112

SURVEY BY:
MCCAULEY & COMPANY, INC., P.S.C.
PROFESSIONAL LAND SURVEYORS
P.O. BOX 39
ELIZABETH, IN 47117-0039
812-969-2186
E-mail mccauleypsc@verizon.net

JOB 10809

2-1

CORNERS RECOVERED CONTINUED

**G-7 CENTER QUARTER CORNER IN SECTION 8, T-4-S, R-3-E
RECOVERED RAILROAD SPIKE 1.0' DEEP IN BUSSABARGER ROAD PER
1992 SURVEY BY LS131. THE SPIKE IS 6.5' N OF THE SEP. A MAG. HUB WAS SET
IN A CONCRETE PLUG OVER THE SPIKE. SEE SURVEY BOOK 1, PAGE 279.
ACCESSORIES ESTABLISHED:
UTILITY POLE W/SIGN, S7°E, 18.1' (SLOPE), MAG NAIL 1' UP ON W SIDE
FEN. POST, N63°E, 37.2', MAG NAIL 1' UP ON SE SIDE
"T" FEN POST @ FEN. INTERSECTION, N66°W, 53.0'**

**I-2 WEST SIXTEENTH CORNER TO SECTIONS 7 & 18, T-4-S, R-3-E
RECOVERED STONE PER SURVEY BOOK 4, PAGE 187 AND 1986 & 1997
SURVEYS BY DNR. THE TWO (2) DNR SURVEYS ARE ATTACHED HERETO AND
MADE A PART HEREOF AS EXHIBITS "B" & "C" RESPECTIVELY. SEE THE
EXHIBITS FOR ACCESSORIES.**

**I-3 QUARTER CORNER TO SECTIONS 7 & 18, T-4-S, R-3-E
RECOVERED STONE PER 1986 & 1997 SURVEYS BY DNR. BOTH SURVEYS
ARE ATTACHED HERETO AND MADE A PART HEREOF AS EXHIBITS "B" & "C"
RESPECTIVELY. THE STONE IS CORNER "F" PER 1889 LEGAL SURVEY OF
RECORD IN LEGAL SURVEY BOOK 1, PAGE 135. SEE THE EXHIBITS FOR
ACCESSORIES.**

**I-7 QUARTER CORNER TO SECTIONS 8 & 17, T-4-S, R-3-E
RECOVERED LIMESTONE 0.5' DEEP AT OLD ABANDONED FENCE
INTERSECTION. THE TOP 0.6' OF THE STONE WAS FRACTURED AND THE STONE
WAS LEANING WEST. THE STONE IS ORIENTED IN CARDINAL DIRECTIONS
AND MEASURES 0.3' BY 0.3' AT THE TOP AND IS 1.9' TALL. THE STONE WAS
LEFT IN PLACE AS RECOVERED. THIS STONE IS CITED ON A 1988 SURVEY BY
LS391, WHICH IS ATTACHED TO AND MADE A PART OF INSTRUMENT
200306921. A #5 BY 30" PIN W/3/4" ALUMINUM CAP WAS SET OVER THE STONE
AT THE TRUE CORNER POSITION. ACCESSORIES ESTABLISHED:
CARSONITE POST, N, 0.5'
SUGAR 10", N86°W, 42.8', MAG NAIL 3' UP ON S SIDE
SUGAR 13" W/ SIGN, N2°W, 27.2', MAG NAIL 3' UP ON E SIDE
WOOD FENCE POST, S86°E, 44.0', MAG NAIL 1' UP ON S SIDE**

**I-13 SECTION CORNER TO SECTIONS 9, 10, 15 & 16, T-4-S, R-3-E
RECOVERED LIMESTONE 1' BY 0.3' PROJECTING 0.7' AT FENCE "T"
INTERSECTION. THE STONE HAS AN OLD STYLE METAL WITNESS POST AND
YELLOW HARRISON COUNTY SURVEY SIGN, 0.5' NORTH OF THE STONE. THE
STONE WAS LEFT IN PLACE AS RECOVERED. ACCESSORIES ESTABLISHED:
FENCE "T" POST, N42°E, 0.7', MAG NAIL 1' UP ON SE SIDE
SASSAFRAS 13" W/ SIGN, N60°W, 5.2', NAG NAIL 1' UP ON NE SIDE
#4 PIN, NORTH, 0.5'**

**SURVEY FOR:
THOMAS O. BUHE
HARRISON COUNTY SURVEYOR
300 N. CAPITOL AVENUE
CORYDON, IN 47112**

**SURVEY BY:
MCCAULEY & COMPANY, INC., P.S.C.
PROFESSIONAL LAND SURVEYORS
P.O. BOX 39
ELIZABETH, IN 47117-0039
812-969-2186
E-mail mccauleypsc@verizon.net**

JOB 10809

2-Q

CORNERS RECOVERED CONTINUED

O-9 QUARTER CORNER TO SECTIONS 20 & 21, T-4-S, R-3-E, CONTINUED
A MAG NAIL WAS SET IN A CONCRETE PLUG OVER THE RAILROAD SPIKE.
ACCESSORIES ESTABLISHED:
TELEPHONE PEDESTAL POST W/SIGN, N23°W, 11.8', MAG NAIL 1' UP ON E SIDE
FENCE CORNER, N66°W, 41.0', MAG NAIL 1' UP ON SW SIDE
STEEL MAIL BOX POST, S49°E, 26.2'

O-11 CENTER QUARTER CORNER IN SECTION 21, T-4-S, R-3-E
RECOVERED ROAD NAIL AS DEPICTED ON THE ABOVE CITED 2007
SURVEY BY LS365. THE NAIL IS 8' SOUTH OF THE NEP OF BROWN-
CUNNINGHAM ROAD IN LINE WITH FENCING TO THE NORTH & SOUTH. THE
POSITION OF THE NAIL IS SUPPORTED BY MEASUREMENTS TO ADJACENT
CORNERS AND VERY OLD AND DISTINCT CULTURAL FEATURES IN THE
VICINITY. A #5 BY 1' PIN WAS SET 0.6' DEEP AND A MAG NAIL WAS SET IN A
CONCRETE PLUG OVER THE PIN. ACCESSORIES ESTABLISHED:
FENCE POST, NORTH, 15.8', MAG NAIL 1' UP ON E SIDE
TELEPHONE PEDESTAL, N32°W, 16.1'
FENCE CORNER W/SIGN, S1°W, 13.3', MAG NAIL 1' UP ON E SIDE

O-13 QUARTER CORNER TO SECTIONS 21 & 22, T-4-S, R-3-E
RECOVERED #5 SPC, LS336 IN THE INTERSECTION OF HEIDELBERG ROAD
AND BROWN-CUNNINGHAM ROAD. THE PIN IS 2' S & 5' E OF THE CENTERLINE
INTERSECTION. THE POSITION OF THE SPC IS SUPPORTED BY
MEASUREMENTS TO ADJACENT CORNERS AND VERY OLD AND DISTINCT
CULTURAL FEATURES IN THE VICINITY. SEE SURVEYS RECORDED IN SURVEY
BOOK 4, PAGE 28 AND INSTRUMENT NUMBERS 200503223, 200603719 &
200700670. A MAG NAIL WAS SET IN A CONCRETE PLUG OVER THE
MONUMENT. ACCESSORIES ESTABLISHED:
TELEPHONE PEDESTAL, S26°E, 30.2'
UTILITY POLE W/SIGN, S52°W, 29.9', MAG NAIL 1' UP ON SE SIDE
TELEPHONE PEDESTAL, N54°W, 67.6'

Q-1 WEST SECTION CORNER TO SECTIONS 19 & 30, T-4-S, R-3-E
5/8" CRIMPED TOP PIPE CORNER "E" PER 2002 DNR SURVEY WHICH IS
ATTACHED HERETO AND MADE A PART HEREOF AS EXHIBIT "E" AND SW
CORNER SECTION 19 PER 2006 SURVEY BY LS451 OF RECORD IN INSTRUMENT
#200701409. SEE EXHIBIT "G" FOR ACCESSORIES.

Q-2 WEST SIXTBENTH CORNER TO SECTIONS 19 & 30, T-4-S, R-3-E
#4 PIN CORNER "F" PER 2002 DNR SURVEY WHICH IS ATTACHED HERETO
AND MADE A PART HEREOF AS EXHIBIT "E" AND CORNER ON SOUTH LINE OF
SECTION 19 PER 2006 SURVEY BY LS451 OF RECORD IN INSTRUMENT
#200701409. SEE EXHIBIT "G" FOR ACCESSORIES.

Q-9 SECTION CORNER TO SECTIONS 20, 21, 28 & 29, T-4-S, R-3-E
RECOVERED FRACTURED STONE PER 1995 SURVEY BY LS131, SEE
SURVEY BOOK 2, PAGE 254 AND 2007 SURVEY BY LS365. SEE INSTRUMENT
#200800992. THE STONE IS IN AN E-W FENCE LINE ON THE E SIDE OF A BRACE
POST, THE FENCE "T" CORNER IS 8.3' WEST.

SURVRY FOR:
THOMAS O. BUBE
HARRISON COUNTY SURVEYOR
300 N. CAPITOL AVENUE
CORYDON, IN 47112

SURVEY BY:
MCCAULEY & COMPANY, INC., P.S.C.
PROFESSIONAL LAND SURVEYORS
P.O. BOX 39
ELIZABETH, IN 47117-0039
812-969-2186
E-mail mccauleypsc@verizon.net

JOB 10809

CORNERS RECOVERED CONTINUED

**G-7 CENTER QUARTER CORNER IN SECTION 8, T-4-S, R-3-E
RECOVERED RAILROAD SPIKE 1.0' DEEP IN BUSSABARGER ROAD PER
1992 SURVEY BY LS131. THE SPIKE IS 6.5' N OF THE SEP. A MAG. HUB WAS SET
IN A CONCRETE PLUG OVER THE SPIKE. SEE SURVEY BOOK 1, PAGE 279.
ACCESSORIES ESTABLISHED:
UTILITY POLE W/SIGN, S7°E, 18.1' (SLOPE), MAG NAIL 1' UP ON W SIDE
FEN. POST, N63°E, 37.2', MAG NAIL 1' UP ON SE SIDE
"T" FEN POST @ FEN. INTERSECTION, N66°W, 53.0'**

**I-2 WEST SIXTEENTH CORNER TO SECTIONS 7 & 18, T-4-S, R-3-E
RECOVERED STONE PER SURVEY BOOK 4, PAGE 187 AND 1986 & 1997
SURVEYS BY DNR. THE TWO (2) DNR SURVEYS ARE ATTACHED HERETO AND
MADE A PART HEREOF AS EXHIBITS "B" & "C" RESPECTIVELY. SEE THE
EXHIBITS FOR ACCESSORIES.**

**I-3 QUARTER CORNER TO SECTIONS 7 & 18, T-4-S, R-3-E
RECOVERED STONE PER 1986 & 1997 SURVEYS BY DNR. BOTH SURVEYS
ARE ATTACHED HERETO AND MADE A PART HEREOF AS EXHIBITS "B" & "C"
RESPECTIVELY. THE STONE IS CORNER "F" PER 1889 LEGAL SURVEY OF
RECORD IN LEGAL SURVEY BOOK 1, PAGE 135. SEE THE EXHIBITS FOR
ACCESSORIES.**

**I-7 QUARTER CORNER TO SECTIONS 8 & 17, T-4-S, R-3-E
RECOVERED LIMESTONE 0.5' DEEP AT OLD ABANDONED FENCE
INTERSECTION. THE TOP 0.6' OF THE STONE WAS FRACTURED AND THE STONE
WAS LEANING WEST. THE STONE IS ORIENTED IN CARDINAL DIRECTIONS
AND MEASURES 0.3' BY 0.3' AT THE TOP AND IS 1.9' TALL. THE STONE WAS
LEFT IN PLACE AS RECOVERED. THIS STONE IS CITED ON A 1988 SURVEY BY
LS391, WHICH IS ATTACHED TO AND MADE A PART OF INSTRUMENT
200306921. A #5 BY 30" PIN W/3/4" ALUMINUM CAP WAS SET OVER THE STONE
AT THE TRUE CORNER POSITION. ACCESSORIES ESTABLISHED:
CARSONITE POST, N, 0.5'
SUGAR 10", N86°W, 42.8', MAG NAIL 3' UP ON S SIDE
SUGAR 13" W/ SIGN, N2°W, 27.2', MAG NAIL 3' UP ON E SIDE
WOOD FENCE POST, S86°E, 44.0', MAG NAIL 1' UP ON S SIDE**

**I-13 SECTION CORNER TO SECTIONS 9, 10, 15 & 16, T-4-S, R-3-E
RECOVERED LIMESTONE 1' BY 0.3' PROJECTING 0.7' AT FENCE "T"
INTERSECTION. THE STONE HAS AN OLD STYLE METAL WITNESS POST AND
YELLOW HARRISON COUNTY SURVEY SIGN, 0.5' NORTH OF THE STONE. THE
STONE WAS LEFT IN PLACE AS RECOVERED. ACCESSORIES ESTABLISHED:
FENCE "T" POST, N42°E, 0.7', MAG NAIL 1' UP ON SE SIDE
SASSAFRAS 13" W/ SIGN, N60°W, 5.2', MAG NAIL 1' UP ON NE SIDE
#4 PIN, NORTH, 0.5'**

**SURVEY FOR:
THOMAS O. BUHE
HARRISON COUNTY SURVEYOR
300 N. CAPITOL AVENUE
CORYDON, IN 47112**

**SURVEY BY:
MCCAULEY & COMPANY, INC., P.S.C.
PROFESSIONAL LAND SURVEYORS
P.O. BOX 39
ELIZABETH, IN 47117-0039
812-969-2186
E-mail mccauleypsc@verizon.net**

JOB 10809

3-M

CORNERS RECOVERED CONTINUED

K-6 CW 1/16th CORNER IN SECTION 17, T-4-S, R-3-E CONTINUED
THE POSITION OF THE STONE IS SUPPORTED BY MEASUREMENTS TO ADJACENT CORNERS AND VERY OLD AND DISTINCT CULTURAL FEATURES IN THE VICINITY. THE STONE WAS LEFT IN PLACE AS RECOVERED. ACCESSORIES ESTABLISHED:

- CARSONITE POST, WEST, 0.5'
- SUGAR 9", N25°E, 5.5', MAG NAIL 1' UP IN SE SIDE
- SUGAR 9" W/SIGN, S39°E, 6.3', MAG NAIL 1' UP IN SW SIDE
- FENCE POST, N84°W, 1.2', MAG NAIL 1' UP IN N SIDE

K-11 CENTER QUARTER CORNER IN SECTION 16, T-4-S, R-3-E
RECOVERED SANDSTONE WITH OLD STYLE STEEL POST AND YELLOW HARRISON COUNTY SURVEYOR'S SIGN. THE STONE IS 0.4' BY 0.5' PROJECTING 0.2', WITH A 3/4" PIPE 0.3' SOUTH. THE STONE WAS LEFT IN PLACE AS RECOVERED. SEE EXHIBIT "D". ACCESSORIES ESTABLISHED:

- MAPLE 12", N70°W, 9.9', MAG NAIL 1' UP IN S SIDE
- MAPLE 9", N36°E, 12.5' (SLOPE), MAG NAIL 1' UP IN SE SIDE
- W. OAK 14", S72°E, 7.8', MAG NAIL 1' UP IN N SIDE
- MAPLE 18", S15°E, 13.0', MAG NAIL 1' UP IN E SIDE

M-3 QUARTER CORNER TO SECTIONS 18 & 19, T-4-S, R-3-E
STONE PER 2006 SURVEY BY LS451 AND OF RECORD AS INSTRUMENT #200701409. SEVERAL MONUMENTS DEPICTED ON THIS SURVEY WERE TIED TO VERIFY THE POSITION OF THIS STONE. NO ACCESSORIES ESTABLISHED THIS SURVEY.

M-9 SECTION CORNER TO SECTIONS 16, 17, 20 & 21, T-4-S, R-3-E
RECOVERED VERY OLD, RUSTED AND DETERIORATED PIPE PER TESTIMONY BY SEVERAL LONG TIME LOCAL RESIDENTS. A MAG NAIL BY LS365 WAS RECOVERED, S15°E, 14' FROM THE PIPE. THE 2005 SURVEY PERFORMED BY LS365 CITES "SET MAG NAIL OVER SPIKE----HCSM." NO REFERENCE FOR THE CORNER WAS PROVIDED BY THE COUNTY SURVEYOR AND NO RECORDED SURVEY WAS DISCOVERED DURING RESEARCH FOR THIS SURVEY. WE USED THE AUDITOR'S FILES FOR A COPIES OF LS365 SURVEYS. THE MAG NAIL WAS REMOVED AND WE DID NOT FIND A SPIKE UNDER THE LS365 NAIL. THE 2005 LS365 SURVEY WAS COMPARED WITH A 2007 SURVEY BY LS365 AND THE SURVEYS WOULD CREATE A HIATUS OF OVER 16' BETWEEN THEM. THEREFORE THE LS365 MAG NAIL WAS DISREGARDED. THE POSITION OF THE PIPE WAS VERIFIED BY MEASUREMENTS TO ADJACENT CORNER MONUMENTS AND BY VERY OLD AND DISTINCT CULTURAL FEATURES IN THIS VICINITY. THE PIPE WAS REPLACED WITH A #5 BY 30" REBAR W/ 3/4" ALUMINUM CAP STAMPED TO DEPICTED THE CORNER POSITION. THE CORNER POSITION IS 5' N OF THE NEP OF FAIRVIEW CHURCH ROAD. ACCESSORIES ESTABLISHED:

- CARSONITE POST, NORTH, 0.5'
- SASSAFRAS 15" W/SIGN & OLD WIRE, N4°W, 12.5', MAG NAIL 1' UP IN E SIDE
- FLUSH HYDRANT, N33°E, 23.3'
- TELEPHONE PEDESTAL POLE, S84°E, 57.8', MAG NAIL 1' UP IN N SIDE
- R. OAK 9", S28°W, 39.2', MAG NAIL 1' UP IN NW SIDE

SURVEY FOR:
THOMAS O. BUBE
HARRISON COUNTY SURVEYOR
300 N. CAPITOL AVENUE
CORYDON, IN 47112

SURVEY BY:
MCCAULEY & COMPANY, INC., P.S.C.
PROFESSIONAL LAND SURVEYORS
P.O. BOX 39
ELIZABETH, IN 47117-0039
812-969-2186
E-mail mccauleypsc@verizon.net

JOB 10809

HARRISON COUNTY

5-B

CORNER 5-B TOWNSHIP 4 SOUTH RANGE 3 EAST 2 ND PRINCIPAL MERIDIAN

LOCATION	DESCRIPTION OF MONUMENT		DISTANCE FROM CORNER	BEARING FROM CORNER	DATE CHECKED	CHECKED BY	FIELD BOOK	REMARKS
	MONUMENT	REFERENCE						
N.W. Corner S.W. 1/4 N.W. 1/4 Section 5	Stone	4" Poplar	20.42	N32-25-E	1-23-84	T.B.	#2 Pg. 40	Sign Placed
		4" Dogwood	13.85	S. 41-38-W	1-23-84	T.B.		Sign Placed
		1.1 Hickory	34.74	N30-32-W	1-23-84	T.B.		Sign Placed

Date 1-23-84

N.W. Cor, SW 1/4 NW 1/4

T 45, R 3 E, Sect. 5

1.18 Hickory nail on East side +

2.5' up from ground

All trees have a blaze
with a aluminum in
middle. All trees have
a witness sign.

3.58 dogwood nail on

west side + 1.70' up
from ground

NORTH

N 30° 30' W
34.71N 32° 25' E
20.423.58 poplar nail on
west side + 6.3' up
from ground.Stone is .50 x .50 x .60 out
of ground. Stone is marked with
a metal post + sign on north
side

Party Chief T. Brown

Head Chain R. Clements

Rear Chain B. Cain

HARRISON

W^Y

CORNER 5 - E

TOWNSHIP 4 S

RANGE 3 E EAST

2ND

PRINCIPAL MERIDIAN

5-E

LOCATION	DESCRIPTION OF		DISTANCE FROM CORNER	BEARING FROM CORNER	DATE CHECKED	CHECKED BY	FIELD BOOK	REMARKS
	MONUMENT	REFERENCE						
Common Corner Sec 5-6-7-8	Sandstone 1.4'x1.0' Flush	23" Oak w/ sign	11.9'	N 14 E	5/09	TOB	6/5a	
		10" Hickory	19.3'	S 55 E				
		17" Hickory	23.6'	S 83 W				

Point No. 120

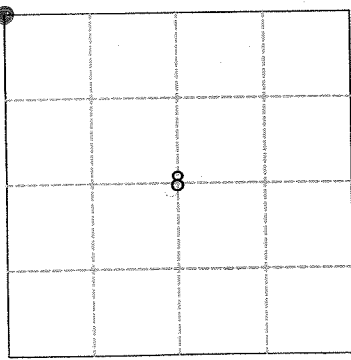
Harrison Co. No. 5-E

T 4 S R 3 E 2nd Mer. County Harrison State Indiana

Section Corner common to Sections 5 and 6, 7, 8

EXISTING SURVEYS

Original Government Survey	Original Evidence Found
Year surveyed <u>1805</u> Original monument <u>Wood Post</u> <small>(wood post, stone, pile of stones, etc.)</small>	Year of search <u>N/A</u> By _____ Monument found _____
Bearing Trees	Original Bearing Trees Found
Species _____ Diameter _____ Bearing _____ Distance _____	Species _____ Diameter _____ Bearing _____ Distance _____
Subsequent Corner Restoration	Evidence of Subsequent Corner Restoration Found
Year surveyed _____ By _____ Where filed or recorded _____ Monument _____ <small>(Original, concrete post, iron rod, etc...)</small>	Year of search <u>2009</u> By <u>VHM</u> <u>Recovered sandstone per 1971 Blankenbeker (L.S. 0095) survey. Stone is 1.4' X 1.0' flush with ground.</u>
Bearing Trees, Reference Objects	Bearing Trees, Reference Objects
Species _____ Diameter _____ Bearing _____ Distance _____	<u>B. Oak</u> <u>Hickory</u> <u>With Blaze</u> <u>With Blaze</u>



Relation of Evidence to Record Features Along Section Lines

Section line to sections _____
Object _____
Record Distance _____
Measured Distance _____

Other Evidence

Describe evidence of use and occupation such as roads, fences, clearings, timber cutting lines, plantations, etc... Cite source of testimony, if any. Old tree line North-South.

Perpetuation Record

Monument and accessories established. Include brief description of area. Placed a cairn around stone.

	B. Oak W/sign	Hickory	Hickory
	23"	10"	17'
	N 14° E	S 55° E	S 83° W
	11.9'	19.3'	23.6'
	MN + 1.0'	MN + 2.6'	
	SE. Side	N. Side	

- At time of search:
- Did you have the record description? Yes X No _____
 - How was search area located? pacing, chaining, photo, maps, etc. SURVEYING
 - Man hours spent in search N/A
 - Do you think additional search might recover evidence? Yes _____ No X
 - Signature Vait H.M.

Certified corner restoration certificate prepared Yes _____ No X
Filed in county records at _____ Date _____ County No. _____
Identified on aerial photo No. _____ Which is filed at _____

5-E

HARRISON COUNTY SURVEYOR
CORNER MONUMENT RECOVERY & REFERENCE RECORD

6/52

TOWNSHIP: 4 RANGE: 3 SECTION: 8

CORNER REF. ID: 5-E
DATE: 5/1/09

MONUMENT INFORMATION

LOCATION: Common Corner to Sec. 5-6-7-8

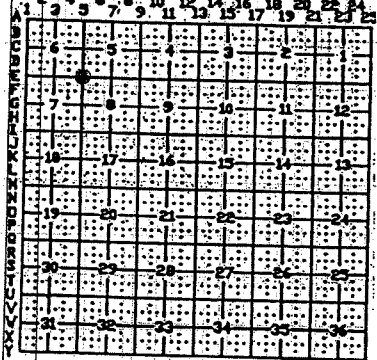
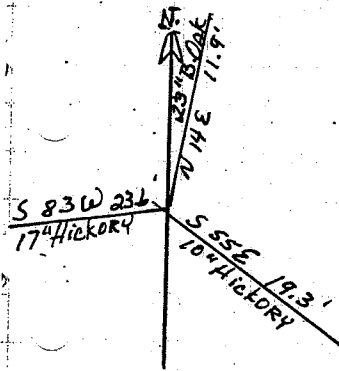
MARKER: SANDSTONE 1.4" x 1.0" Flush with ground

ADDITIONAL DISTINGUISHING CHARACTERISTICS:

REPLACED: () YES DATE: / /

WITNESS MARKERS

TYPE	SIGN	BLAZE	ADDITION DESCRIPTION
1	8.0" Oak	23 (X)	() N 14 E 11.9'
2	10" Hickory	() ()	S 55 E 19.3'
3	17" Hickory	() ()	S 83 W 23.6'



RECOVERED BY: U. M. CAULEY

DATE: 5/1/09
DATE: / /
DATE: / /

REASONED BY: TDB

DATE: 7/27/09
DATE: / /
DATE: / /

FILED IN PERPETUATION RECORDS BOOK:
Thomas D. Bube

DATE: 7/30/09

TECHNICAL REPORT OF SURVEY CONTINUED

THE CORNERS RECOVERED, RESTORED, ESTABLISHED AND PERPETUATED BY THIS SURVEY ARE MARKED IN THE LEGEND. THE BEARING BETWEEN MONUMENTS IS GRID NORTH AS DETERMINED BY GPS SURVEYS.

HORIZONTAL AND VERTICAL CONTROLS FOR THIS SURVEY ARE BASED ON STATIC AND RTK GPS METHODS AND COORDINATES WERE CONSTRAINED TO AN NGS OPUS SOLUTION POSITION, INDIANA STATE PLANE COORDINATE SYSTEM, EAST ZONE, 1983 DATUM, FOR AN ON-SITE GPS BASE STATION. THIS IS A RETRACEMENT "RURAL CLASS SURVEY" AS DEFINED BY 865 IAC 1-12 SECTION 7, PARAGRAPH e-3 AND IS WITH THE "RELATIVE POSITIONAL ACCURACY" SPECIFICATIONS CITED IN SAID IAC.

CONVENTIONAL TERRESTRIAL TRAVERSES WERE RUN BETWEEN THE GPS CONTROL STATIONS TO VERIFY BOTH SURVEY TECHNIQUES. THE POSITIONS OF MONUMENTS WERE VERIFIED WITH REDUNDANT MEASUREMENTS. ALL TRAVERSES WERE EITHER CLOSED TRAVERSES OR WERE CONTROLLED BY GPS SURVEY METHODS.

CONVENTIONAL SURVEY TIES WERE ALSO MADE TO OTHER SIGNIFICANT CORNER MONUMENTS NEEDED TO COMPLETE THIS SURVEY. GPS POSITIONS WERE DETERMINED ON THESE TIES FOR VERIFICATION PURPOSES.

THIS SURVEY IS BASED ON THE INDIANA STATE PLANE COORDINATE SYSTEM, EAST ZONE, 1983 ADJUSTMENT, U.S. SURVEY FOOT. THE DISTANCES SHOWN ARE SEA LEVEL GRID DISTANCES, BASED ON A COMBINED SCALE FACTOR OF 0.99996010. TO CONVERT SURVEY DISTANCES TO HORIZONTAL GROUND LEVEL DISTANCES, DIVIDE THE SURVEY DISTANCES BY THE SCALE FACTOR. A MORE COMPLETE TECHNICAL REPORT OF THE GPS SURVEY AND THE FIELD SURVEY IS ON FILE IN THE HARRISON COUNTY SURVEYOR'S OFFICE.

THE RANDOM TRAVERSES FOR THIS PROJECT WERE MEASURED BY ELECTRONIC MEASURING EQUIPMENT.

CORNERS RECOVERED

E-5 SECTION CORNER TO SECTIONS 5, 6, 7 & 8, T-4-S, R-3-E
RECOVERED SANDSTONE PER 1971 RECOVERY AND SURVEY. THE STONE WAS LEFT IN PLACE AS RECOVERED AND A CAIRN OF ROCKS WAS PLACED AROUND THE STONE. THE STONE IS 1.0' BY 1.4' FLUSH WITH THE GROUND. A COPY OF THE 1971 SURVEY IS ATTACHED HERETO AND A PART HEREOF AS EXHIBIT "A". THE FOLLOWING ACCESSORIES WERE ESTABLISHED:
B. OAK 23" W/SIGN, N14°E, 11.9', MAG NAIL 1' UP ON SE SIDE IN OLD BLAZE
HICKORY 10", S55°E, 19.3', MAG NAIL 2.6' UP ON N SIDE IN OLD BLAZE
HICKORY 17", S83°W, 23.6'
SUGAR 3", N30°E, 6.1', W3 HACKS
SUGAR 6", S29°W, 10.8', W3 HACKS

E-9 SECTION CORNER TO SECTIONS 4, 5, 8 & 9, T-4-S, R-3-E
RECOVERED #4 STEEL PIN WITH LS131 CAP, PROJECTING 0.2'. THE POSITION OF THE SPC WAS VERIFIED AGAINST THE 1991 RECOVERY OF A STONE. IN MY OPINION THE SPC WAS SET TO REPLACE THE STONE. THE PIN WAS LEFT IN PLACE AS RECOVERED.

SURVEY FOR:
THOMAS O. BUBE
HARRISON COUNTY SURVEYOR
300 N. CAPITOL AVENUE
CORYDON, IN 47112

SURVEY BY:
MCCAULEY & COMPANY, INC., P.S.C.
PROFESSIONAL LAND SURVEYORS
P.O. BOX 39
ELIZABETH, IN 47117-0039
812-969-2186
E-mail mccauleypsc@verizon.net

JOB 10809

HARRISON

COUNTY

CORNER 5-I

TOWNSHIP 4S

RANGE 3 E

EAST

2ND

PRINCIPAL MERIDIAN

5-I

LOCATION	DESCRIPTION OF		DISTANCE FROM CORNER	BEARING FROM CORNER	DATE CHECKED	CHECKED BY	FIELD BOOK	REMARKS
	MONUMENT	REFERENCE						
Common Corn. Sec 7-8-17-18	#5x30" w/disk	6" Sugar w/sign	9.6'	S 81 W	5/09	TOB	6/59	Carsonite Post 0.5'S
		18" R Oak	20.8'	S 28 W				
		14" R Oak	41.1'	N 84 E				

5-I

CORNERS RECOVERED CONTINUED

Q-9 SECTION CORNER TO SECTIONS 20, 21, 28 & 29, T-4-S, R-3-E, CONTINUED THE STONE WAS REPLACED WITH A #5 BY 30" PIN WITH 3/4" ALUMINUM CAP STAMPED TO DEPICTED THE CORNER POSITION. THE POSITION OF THE SPC IS SUPPORTED BY MEASUREMENTS TO ADJACENT CORNERS AND VERY OLD AND DISTINCT CULTURAL FEATURES IN THE VICINITY. ACCESSORIES ESTABLISHED:

- CARSONITE POST, NORTH, 0.6'**
- W. OAK 37", N4°E, 35.0'**
- B. OAK 13", S23°E, 39.0', MAG NAIL 1' UP IN W SIDE**
- FENCE BRACE POST W/SIGN, WEST, 0.5'**

Q-11 QUARTER CORNER TO SECTIONS 21 & 28, T-4-S, R-3-E RECOVERED #4 SPC, LS131, PROJECTING 1'. THE MONUMENT IS AT AN OLD DOWN FENCE CORNER POST. THE CORNER IS SHOWN ON THE 1995 SURVEY BY LS131, SEE SURVEY BOOK 2, PAGE 254, BUT NO MONUMENT IS DEPICTED. THE 2007 SURVEY BY LS365 CALLS FOR #5 SPC, PROJECTING 10" AND HCSM. NO REFERENCE FOR THE CORNER WAS PROVIDED BY THE COUNTY SURVEYOR AND NO RECORDED SURVEY WAS DISCOVERED DURING RESEARCH FOR THIS SURVEY. WE USED THE AUDITOR'S FILES FOR A COPIES OF LS365 SURVEYS. THE POSITION OF THE SPC IS SUPPORTED BY MEASUREMENTS TO ADJACENT CORNERS AND VERY OLD AND DISTINCT CULTURAL FEATURES IN THE VICINITY. ACCESSORIES ESTABLISHED:

- CARSONITE POST, SOUTH, 0.5'**
- HACKBERRY 18", N18°E, 4.6', MAG NAIL 1' UP ON E SIDE**
- WALNUT 8", S27°E, 6.6', MAG NAIL 1' UP ON W SIDE**
- SUGAR 10" W/SIGN, N77°W, 11.6', MAG NAIL 1' UP ON S SIDE**

Q-13 SECTION CORNER TO SECTIONS 21, 22, 27 & 28, T-4-S, R-3-E RECOVERED AN AXLE 0.7' DEEP IN HEIDELBERG ROAD, 8' EAST OF THE WEST. THE POSITION OF THIS CORNER IS SUPPORTED BY MEASUREMENTS TO ADJACENT CORNERS AND VERY OLD AND DISTINCT CULTURAL FEATURES IN THE VICINITY. SEE SURVEYS RECORDED IN SURVEY BOOK 4, PAGE 28 AND INSTRUMENT NUMBERS 200503223, 200603719 & 200700670. A MAG HUB WAS SET IN A CONCRETE PLUG OVER THE MONUMENT. ACCESSORIES ESTABLISHED:

- TELEPHONE PEDESTAL, N56°E, 22.0'**
- CHERRY 8" W/SIGN, N44°W, 21.3' MAG NAIL 1' UP ON SW SIDE**
- MAPLE 12", S36°E, 68.5'**

S-5 QUARTER CORNER TO SECTIONS 29 & 30, T-4-S, R-3-E CORNER "R" PER 2002 DNR SURVEY WHICH IS ATTACHED HERETO AND MADE A PART HEREOF AS EXHIBIT "G". SEE EXHIBIT "G" FOR ACCESSORIES.

CORNERS RESTORED

I-5 SECTION CORNER TO SECTIONS 7, 8, 17 & 18, T-4-S, R-3-E RESTORED CORNER POSITION PER CHAPTERS V & VI OF "THE MANUAL OF SURVEYING INSTRUCTIONS". RESTORED CORNER POSITION ON LINE AT PROPORTIONAL DISTANCE BETWEEN VERIFIABLE STONES RECOVERED TO THE EAST & WEST (SEE I-3 & I-7 ABOVE).

**SURVEY FOR:
THOMAS O. BUBE
HARRISON COUNTY SURVEYOR
300 N. CAPITOL AVENUE
CORYDON, IN 47112**

**SURVEY BY:
MCCAULEY & COMPANY, INC., P.S.C.
PROFESSIONAL LAND SURVEYORS
P.O. BOX 39
ELIZABETH, IN 47117-0039
812-969-2186
E-mail mccauleypsc@verizon.net**

JOB 10809

5-2
CORNERS RESTORED CONTINUED

I-5 SECTION CORNER TO SECTIONS 7, 8, 17 & 18, T-4-S, R-3-E, CONTINUED
THE POSITION OF THIS CORNER IS SUPPORTED BY VERY OLD AND DISTINCT CULTURAL FEATURES IN THE VICINITY. SET #5 BY 30" PIN W/3/4" ALUMINUM DISK STAMPED TO DEPICT THE CORNER POSITION AND A CAIRN OF ROCKS WAS PLACED AROUND THE MONUMENT. SEE COMMENTS IN THE NARRATIVE. ACCESSORIES ESTABLISHED:
CARSONITE POST, SOUTH, 0.5'
SUGAR 6" W/SIGN, S81°W, 9.6', MAG NAIL 1' UP ON N SIDE
R. OAK 18", S28°W, 20.8' (SLOPE), MAG NAIL 1' UP ON NW SIDE
R. OAK 14", N84°E, 41.1', MAG NAIL 1' UP ON S SIDE
SPC-LS131, N88°E, 163.94' SEE EXHIBIT "E" WHICH IS ATTACHED HERETO AND MADE A PART HEREOF. NO REFERENCE FOR THE CORNER WAS PROVIDED BY THE COUNTY SURVEYOR AND NO RECORDED SURVEY WAS DISCOVERED DURING RESEARCH FOR THIS SURVEY. WE USED THE AUDITOR'S FILES FOR A COPIES OF LS131 SURVEY.

I-9 SECTION CORNER TO SECTIONS 8, 9, 16 & 17, T-4-S, R-3-E
RESTORED CORNER POSITION PER CHAPTERS V & VI OF "THE MANUAL OF SURVEYING INSTRUCTIONS". RESTORED CORNER POSITION ON LINE AT VERY NEAR PROPORTIONAL DISTANCE BETWEEN VERIFIABLE STONES RECOVERED TO THE EAST & WEST (SEE I-7 & I-13 ABOVE). THE POSITION OF THIS CORNER IS SUPPORTED BY ORIGINAL SURVEY (1806) CALLS AND BY VERY OLD AND DISTINCT CULTURAL FEATURES IN THE VICINITY. SET #5 BY 30" PIN W/3/4" ALUMINUM DISK STAMPED TO DEPICT THE CORNER POSITION AND A CAIRN OF ROCKS WAS PLACED AROUND THE MONUMENT. SEE COMMENTS IN THE NARRATIVE. ACCESSORIES ESTABLISHED:

CARSONITE POST, NORTH, 0.6'
R. OAK 8" W/SIGN, S87°E, 17.2', MAG NAIL 1' UP ON N SIDE
R. OAK 17", N 78°W, 35.1', MAG NAIL 1' UP ON S SIDE
HICKORY 20", N14°E, 26.1', MAG NAIL 1' UP ON W SIDE
FENCE CORNER POST, S4°W, 11.9', MAG NAIL 1' UP ON E SIDE
#4 PIN BY LS391, S5°30'W, 11.64' SEE SURVEY ATTACHED TO AND MADE A PART OF INSTRUMENT 200306921.

I-11 QUARTER SECTION CORNER TO SECTIONS 9 & 16, T-4-S, R-3-E
RESTORED CORNER POSITION PER CHAPTERS V & VI OF "THE MANUAL OF SURVEYING INSTRUCTIONS". RESTORED CORNER POSITION ON LINE AT VERY NEAR PROPORTIONAL DISTANCE BETWEEN VERIFIABLE STONES RECOVERED TO THE EAST & WEST (SEE I-7 & I-13 ABOVE) AND MONUMENTS RECOVERED FROM SURVEY "EXHIBIT D" TO THE SOUTH. THE POSITION OF THIS CORNER IS SUPPORTED BY VERY OLD AND DISTINCT CULTURAL FEATURES IN THE VICINITY. SET #5 BY 30" PIN W/3/4" ALUMINUM DISK STAMPED TO DEPICT THE CORNER POSITION. SEE COMMENTS IN THE NARRATIVE. ACCESSORIES ESTABLISHED:

CARSONITE POST, NORTH, 0.6'
SUGAR 10" W/SIGN, N78°E, 1.3', MAG NAIL 1' UP ON N SIDE
SUGAR 30", S22°W, 5.4', MAG NAIL 1' UP ON W SIDE
SUGAR 9" W/WIRE, N71°W, 23.5', MAG NAIL 1' UP ON S SIDE

SURVEY FOR:
THOMAS O. BUBE
HARRISON COUNTY SURVEYOR
300 N. CAPITOL AVENUE
CORYDON, IN 47112

SURVEY BY:
MCCAULEY & COMPANY, INC., P.S.C.
PROFESSIONAL LAND SURVEYORS
P.O. BOX 39
ELIZABETH, IN 47117-0039
812-969-2186
E-mail mccauleypsc@verizon.net

JOB 10809

10

LAND CORNER RECORD
(RECTANGULAR SURVEYS)


Point No. 440

Harrison Co. No. 5-I

T 4 S R 3 E 2nd Mer. County Harrison State Indiana

Section Corner common to Sections 7 and 8, 17 & 18

EXISTING SURVEYS

Original Government Survey	Original Evidence Found																								
Year surveyed <u>1805</u> Original monument <u>Wood Post</u> <small>(wood post, stone, pile of stones, etc.)</small> <hr/> <p style="text-align:center;">Bearing Trees</p> Species _____ Diameter _____ Bearing _____ Distance _____	Year of search <u>N/A</u> By _____ Monument found _____ <hr/> <p style="text-align:center;">Original Bearing Trees Found</p> Species _____ Diameter _____ Bearing _____ Distance _____																								
Subsequent Corner Restoration	Evidence of Subsequent Corner Restoration Found																								
Year surveyed _____ By _____ Where filed or recorded _____ Monument _____ <small>(Original, concrete post, iron rod, etc...)</small> <hr/> <p style="text-align:center;">Bearing Trees, Reference Objects</p> Species _____ Diameter _____ Bearing _____ Distance _____	Year of search <u>2009</u> By <u>VHM</u> No evidence recovered. <div style="text-align:center;">  </div>																								
<div style="border: 1px solid black; width: 200px; height: 150px; margin: 0 auto; position: relative;"> <div style="position: absolute; top: 50%; left: 50%; transform: translate(-50%, -50%); font-size: 24px;">17</div> </div>	<p style="text-align:center;">Relation of Evidence to Record Features Along Section Lines</p> Section line to sections _____ Object _____ Record Distance _____ Measured Distance _____ <hr/> <p style="text-align:center;">Other Evidence</p> Describe evidence of use and occupation such as roads, fences, clearings, timber cutting lines, plantations, etc... Cite source of testimony, If any. _____ <hr/> <p style="text-align:center;">Perpetuation Record</p> Monument and accessories established. Include brief description of area. <u>Set #5 by 30" with aluminum disk. Placed a cairn around monument.</u> <table border="1" style="width:100%; border-collapse: collapse; margin-top: 10px;"> <thead> <tr> <th>Sugar W/sign</th> <th>R. Oak</th> <th>R. Oak</th> <th>Carsonite</th> </tr> </thead> <tbody> <tr> <td>6"</td> <td>18"</td> <td>14"</td> <td>Post</td> </tr> <tr> <td>S 81° W</td> <td>S 28° W</td> <td>N 84° E</td> <td>South</td> </tr> <tr> <td>9.6'</td> <td>20.8' slope</td> <td>41.1'</td> <td>0.5'</td> </tr> <tr> <td>MN + 1.0'</td> <td>MN + 1.0'</td> <td>MN + 1.0'</td> <td></td> </tr> <tr> <td>N. Side</td> <td>NW Side</td> <td>S. Side</td> <td></td> </tr> </tbody> </table> <hr/> Certified corner restoration certificate prepared Yes _____ No <u>X</u> Filed in county records at _____ Date _____ County No. _____ Identified on aerial photo No. _____ Which is filed at _____	Sugar W/sign	R. Oak	R. Oak	Carsonite	6"	18"	14"	Post	S 81° W	S 28° W	N 84° E	South	9.6'	20.8' slope	41.1'	0.5'	MN + 1.0'	MN + 1.0'	MN + 1.0'		N. Side	NW Side	S. Side	
Sugar W/sign	R. Oak	R. Oak	Carsonite																						
6"	18"	14"	Post																						
S 81° W	S 28° W	N 84° E	South																						
9.6'	20.8' slope	41.1'	0.5'																						
MN + 1.0'	MN + 1.0'	MN + 1.0'																							
N. Side	NW Side	S. Side																							
<p>At time of search:</p> 1. Did you have the record description? Yes <u>X</u> No _____ 2. How was search area located? pacing, chaining, photo, maps, etc. <u>SURVEYING</u> 3. Man hours spent in search <u>N/A</u> 4. Do you think additional search might recover evidence? Yes _____ No <u>X</u> 5. Signature <u>VHM</u>																									

5-I

HARRISON COUNTY SURVEYOR 6/59
CORNER MONUMENT RECOVERY & REFERENCE RECORD

TWNSEIP: 4 RANGE: 3 SECTION: 17

CORNER REF. ID: S-I
DATE: 5/1/09

MONUMENT INFORMATION

CATION: Common Corner to 7-8-17+18

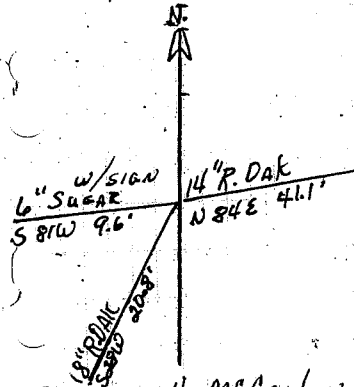
SCRIPTION: #5 w/disk

DITIONAL DISTINGUISHING CHARACTERISTICS:
CARIN AROUND MONUMENT
CARSON & Post O.S. South

SIGN PLACED: () YES DATE: 1/1/

WITNESS MARKERS

TYPE	SIGN	BLAZE	ADDITION DESCRIPTION
6" SUGAR w/6160	(X)	()	S 81W 9.6'
2 18" R. OAK	()	()	S 38W 20.8' SLOPE
3 14" R. OAK	()	()	N 84E 4.1'



1	2	3	4	5	6	7	8	9	10	11	12	13	14	15	16	17	18	19	20	21	22	23	24	
25	26	27	28	29	30	31	32	33	34	35	36	37	38	39	40	41	42	43	44	45	46	47	48	49

COVERED BY: V. McCANLEY

DATE: 5/1/09
DATE:
DATE:

RENCED BY: TOB

DATE: 8/20/09
DATE:
DATE:

RDDED IN PERPETUATION RECORDS BOOK:
Thomas O. Burt

DATE: 8/21/09

HARRISON

COUNTY

5-K

CORNER 5-K TOWNSHIP 4 S RANGE 3 E EAST 2ND PRINCIPAL MERIDIAN

LOCATION	DESCRIPTION OF		DISTANCE FROM CORNER	BEARING FROM CORNER	DATE CHECKED	CHECKED BY	FIELD BOOK	REMARKS
	MONUMENT	REFERENCE						
1/4 Corner Common to Sec. 17-18	#5 w/disk	Fence Corn. Post	4.7'	S 76 E	5/09	TOB	6/55	Carsonite Post 0.6'N
		15" Poplar	36.1'	N 36 E				
		10" Sugar	26.1'	S 32 E				
		Steel Pin w/cap LS 0131	18.47'	S 1,26' E				

5-K

CORNERS RESTORED CONTINUED

K-5 QUARTER CORNER TO SECTIONS 17 & 18, T-4-S, R-3-E
 RESTORED CORNER POSITION ON LINE BETWEEN SECTION CORNERS TO THE NORTH & SOUTH (SEE I-5 & M-5) AND STONE AND QUARTER CORNER TO THE EAST (SEE K-6 & K-9). THE POSITION OF THIS CORNER IS SUPPORTED BY VERY OLD AND DISTINCT CULTURAL FEATURES IN THE VICINITY. SET #5 BY 30" PIN W/3/4" ALUMINUM DISK STAMPED TO DEPICT THE CORNER POSITION. ACCESSORIES ESTABLISHED:
 CARSONITE POST, NORTH, 0.6'
 FENCE CORNER POST W/SIGN, S76°E, 4.7', MAG NAIL 1' UP ON S SIDE
 POPLAR 15", N36°E, 36.1', MAG NAIL 1' UP ON E SIDE
 SUGAR 10", S32°E, 26.1', MAG NAIL 1' UP ON E SIDE
 SPC-LS131, S1°26'E, 18.47' SEE EXHIBIT "E". NOTE THAT NO RECORD SURVEY WAS RECOVERED FOR THIS CORNER DURING RESEARCH THIS SURVEY. THIS CORNER IS DEPICTED AS A FENCE POST IN SEVERAL PRIOR SURVEYS BY LS131 AND BY LS20200046 OF THE SAME OFFICE.

K-9 QUARTER CORNER TO SECTIONS 16 & 17, T-4-S, R-3-E
 RESTORED CORNER POSITION ON LINE BETWEEN SECTION CORNERS TO THE NORTH & SOUTH (SEE I-9 & M-9). THE POSITION OF THIS CORNER IS SUPPORTED BY VERY OLD AND DISTINCT CULTURAL FEATURES IN THE VICINITY. SET #5 BY 30" PIN W/3/4" ALUMINUM DISK STAMPED TO DEPICT THE CORNER POSITION. ACCESSORIES ESTABLISHED:
 CARSONITE POST, EAST, 0.2'
 B. OAK 21", S79°W, 37.3', MAG NAIL 1' UP ON N SIDE
 TWIN SUGAR 21' W/SIGN, S51°E, 19.2', MAG NAIL 1' UP ON NE SIDE
 TWIN B. OAK 10" S STEM W/WIRE, N29°E, 14.7', MAG NAIL 1' UP ON SE FACE
 SPC-LS131, S4°06'W, 9.50' SEE SURVEY BOOK 6, PAGE 397 OR INSTRUMENT 200408684. NO REFERENCE FOR THE CORNER WAS PROVIDED BY THE COUNTY SURVEYOR AND NO RECORDED SURVEY WAS DISCOVERED DURING RESEARCH FOR THIS SURVEY.

K-13 QUARTER CORNER TO SECTIONS 15 & 16, T-4-S, R-3-E
 RESTORED CORNER POSITION ON LINE WITH RECOVERED MONUMENTS TO THE NORTH (SEE I-13 & J-13) PER TESTIMONY BY A LONG TIME LOCAL RESIDENT. THE POSITION OF THIS CORNER IS SUPPORTED BY VERY OLD AND DISTINCT CULTURAL FEATURES IN THE VICINITY. A #5 BY 1' PIN WAS SET 0.6' DEEP AND A MAG HUB WAS SET IN A CONCRETE PLUG OVER THE PIN. THE MONUMENT IS 3 FEET WEST OF THE BEP OF HEIDELBERG ROAD. ACCESSORIES ESTABLISHED:
 FLUSH HYDRANT, S85°W, 23.3'
 TELEPHONE PED. POST W/SIGN, S48°E, 21.6', MAG NAIL 1' UP ON NE SIDE
 TELEPHONE PEDESTAL, N2°E, 75.2'
 MAIL BOX #3031, N26°W, 71.2'

SURVEY FOR:
 THOMAS O. HUBE
 HARRISON COUNTY SURVEYOR
 300 N. CAPITOL AVENUE
 CORYDON, IN 47112

SURVEY BY:
 MCCAULEY & COMPANY, INC., P.S.C.
 PROFESSIONAL LAND SURVEYORS
 P.O. BOX 39
 ELIZABETH, IN 47117-0039
 812-969-2186
 E-mail mccauleypsc@verizon.net

JOB 10809

Point No. 444

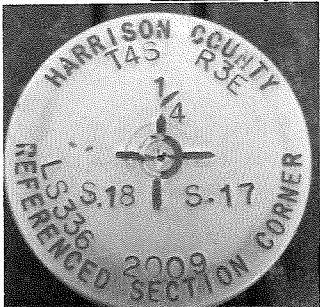
Harrison Co. No. _____

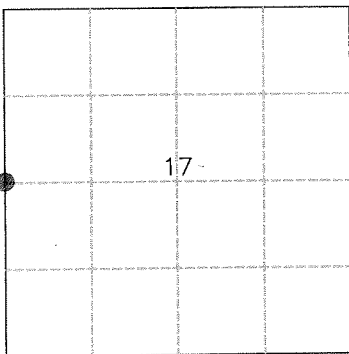
5-K

T 4 S R 3 E 2nd Mer. County Harrison State Indiana

1/4 Corner common to Sections 17 and 18

EXISTING SURVEYS

Original Government Survey	Original Evidence Found
Year surveyed <u>N/A</u> Original monument _____ <small>(wood post, stone, pile of stones, etc.)</small> <hr/> <p style="text-align: center;">Bearing Trees</p> Species _____ Diameter _____ Bearing _____ Distance _____	Year of search _____ By _____ Monument found _____ <hr/> <p style="text-align: center;">Original Bearing Trees Found</p> Species _____ Diameter _____ Bearing _____ Distance _____
Subsequent Corner Restoration	Evidence of Subsequent Corner Restoration Found
Year surveyed _____ By _____ Where filed or recorded _____ Monument _____ <small>(Original, concrete post, iron rod, etc...)</small> <hr/> <p style="text-align: center;">Bearing Trees, Reference Objects</p> Species _____ Diameter _____ Bearing _____ Distance _____	Year of search <u>2009</u> By <u>VHM</u> 



Relation of Evidence to Record Features Along Section Lines

Section line to sections _____
 Object _____
 Record Distance _____
 Measured Distance _____

Other Evidence

Describe evidence of use and occupation such as roads, fences, clearings, timber cutting lines, plantations, etc... Cite source of testimony, If any. _____

Perpetuation Record

Monument and accessories established. Include brief description of area. Set #5 by 30" with 3/4" aluminum disk. Set Carsonite Post 0.6' North.

Fence Corner Post	Poplar	Sugar	Steel Pin w/cap
S 76° E	N 36° E	S 32° E	S 1° 26' E
4.7'	36.1'	26.1'	18.47'
MN + 1.0'	MN + 1.0'	MN + 1.0'	
S. Side	E. Side	E. Side	

Certified corner restoration certificate prepared Yes _____ No X
 Filed in county records at _____ Date _____ County No. _____
 Identified on aerial photo No. _____ Which is filed at _____

At time of search:

- Did you have the record description? Yes X No _____
- How was search area located? pacing, chaining, photo, maps, etc. SURVEYING
- Man hours spent in search N/A
- Do you think additional search might recover evidence? Yes _____ No X
- Signature Vicki H.M.

5-K

HARRISON COUNTY SURVEYOR
CORNER MONUMENT RECOVERY & REFERENCE RECORD

6/55

TWNSHIP: 4 RANGE: 3 SECTION: 17

CORNER REF. LD.: 5K
DATE: 5/1/09

MONUMENT INFORMATION

LOCATION: 1/4 CORNER Common to 17 + 18

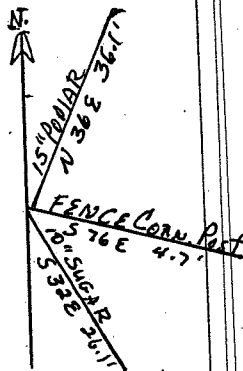
DESCRIPTION: # 5 w/disk

ADDITIONAL DISTINGUISHING CHARACTERISTICS:
CARSONITE Post 16" NORTH

SIGN PLACED: (Q) YES DATE: 5/1/05

WITNESS MARKERS

TYPE	SIGN	BLAZE	ADDITION DESCRIPTION
1. FENCE CORNER Post	()	()	S 76 E 4.7'
2. 15" POPIAR	()	()	N 36 E 36.1'
3. 10" SUGAR	()	()	S 32 E 36.1'



1	2	3	4	5	6	7	8	9	10	11	12	13	14	15	16	17	18	19	20	21	22	23	24
25	26	27	28	29	30	31	32	33	34	35	36	37	38	39	40	41	42	43	44	45	46	47	48

RECOVERED BY: V. McCauley

DATE: 5/1/09
DATE: / /
DATE: / /

REFERENCED BY: TOB

DATE: / / 05
DATE: / /
DATE: / /

RECORDED IN PERPETUATION RECORDS BOOK:
BY:

DATE: / /

HARRISON

COUNTY

CORNER 5-M

TOWNSHIP 4 S

RANGE 3 E

EAST

2ND PRINCIPAL MERIDIAN

5-M

LOCATION	DESCRIPTION OF		DISTANCE FROM CORNER	BEARING FROM CORNER	DATE CHECKED	CHECKED BY	FIELD BOOK	REMARKS
	MONUMENT	REFERENCE						
Common Corn. Sec. 17-18- 19-20	#5x4" cemented in Limestone shelf w/disk	8" W Oak w/sign	4.9'	S 71 E	5/09	TOB	6/53	Carsonite Post 1.8' South
		6" Sugar	11.6'	N 4 W				
		29" B Oak	30.8'	S 32 E				
		Steel Pin w/ Cap LS 0131	9.8'	North				

5-M

CORNERS RESTORED CONTINUED

M-5 SECTION CORNER TO SECTIONS 17, 18, 19 & 20, T-4-S, R-3-E RESTORED CORNER POSITION ON LINE BETWEEN SECTIONS CORNERS TO THE NORTH & SOUTH (SEE I-5 & Q-5) AT RECORD DISTANCE FROM AN AXLE RECOVERED TO THE NORTH, PER TESTIMONY BY A LONG TIME LOCAL RESIDENT. THE POSITION OF THIS CORNER IS SUPPORTED BY VERY OLD AND DISTINCT CULTURAL FEATURES IN THE VICINITY. SET #5 BY 4" PIN CEMENTED IN A DRILL HOLE IN A LIMESTONE SHELF, WITH 3/4" ALUMINUM DISK STAMPED TO DEPICT THE CORNER POSITION.

ACCESSORIES ESTABLISHED:

**CARSONITE POST, SOUTH, 1.8'
W. OAK 8" W/SIGN, S71°E, 4.9', MAG NAIL 1' UP ON S SIDE
SUGAR 6", N4°W, 11.6', MAG NAIL 1' UP ON W SIDE
B. OAK 29", S32°E, 30.8' MAG NAIL 1' UP ON E SIDE
SPC-LS20200046, N11°19'E, 9.80' SEE SURVEY RECORDED AS INSTRUMENT 200401097.
FENCE CORNER POST-LS131, S2°37'E, 24.24' SEE SURVEY RECORDED AS INSTRUMENT 20006836. ALSO SEE SURVEYS RECORDED AS 200401097 AND**

M-7 QUARTER CORNER TO SECTIONS 17 & 20, T-4-S, R-3-E RESTORED CORNER POSITION PER CHAPTERS V & VI OF "THE MANUAL OF SURVEYING INSTRUCTIONS". RESTORED CORNER POSITION ON LINE AT VERY NEAR PROPORTIONAL DISTANCE BETWEEN SECTION CORNERS TO THE EAST & WEST (SEE M-5 & M-9) AND MONUMENTS RECOVERED TO THE NORTH & SOUTH. THE POSITION OF THIS CORNER IS SUPPORTED BY VERY OLD AND DISTINCT CULTURAL FEATURES IN THE VICINITY AND BY TESTIMONY BY SEVERAL LONG TIME LOCAL RESIDENTS. SET #5 BY 1" PIN 0.5' DEEP WITH A MAG HUB SET IN A CONCRETE PLUG OVER THE PIN. THE MONUMENT IS NEAR THE CENTERLINE OF DIXIE ROAD, 9' NORTH OF FAIRVIEW CHURCH ROAD (TO THE EAST). NO REFERENCE FOR THE CORNER WAS PROVIDED BY THE COUNTY SURVEYOR. SEE COMMENTS IN THE NARRATIVE. ACCESSORIES ESTABLISHED:

**UTILITY POLE W/SIGN, S21°W, 85.0', MAG NAIL 1' UP ON SE FACE
WATER VALVE, S39°W, 48.5'
TELEPHONE PEDESTAL, N68°E, 28.0'
SUGAR 15", N68°W, 38.0', MAG NAIL 1' UP ON S SIDE
1" PIN, 1' DEEP, S22°39'W, 17.69'. THIS PIN HAS BEEN USED BY SEVERAL LOCAL SURVEYORS FOR NEARLY 30 YEARS. THE PIN WAS SET IN 1980 BY LS131, A COPY OF THE 1980 SURVEY IS ATTACHED HERETO AS EXHIBIT "F" AND MADE A PART HEREOF. SEE 1995 SURVEY RECORDED AS SURVEY BOOK 2, PAGE 419, WHICH ESTABLISHES THE CS 1/16th CORNER. ALSO SEE SURVEYS RECORDED AS INSTRUMENTS 200401097, 20006836 AND 200800992.**

0-5 QUARTER CORNER TO SECTIONS 19 & 20, T-4-S, R-3-E RESTORED CORNER POSITION PER CHAPTERS V & VI OF "THE MANUAL OF SURVEYING INSTRUCTIONS". RESTORED CORNER POSITION ON LINE AND EQUIDISTANT BETWEEN SECTION CORNERS TO THE NORTH & SOUTH (SEE M-5 & Q-5) AND MONUMENTS RECOVERED TO THE EAST.

**SURVEY FOR:
THOMAS O. BUBE
HARRISON COUNTY SURVEYOR
300 N. CAPITOL AVENUE
CORYDON, IN 47112**

**SURVEY BY:
MCCAULEY & COMPANY, INC., P.S.C.
PROFESSIONAL LAND SURVEYORS
P.O. BOX 39
ELIZABETH, IN 47117-0039
812-969-2186
E-mail mccauleypsc@verizon.net**

JOB 10809

5-M

6/53

HARRISON COUNTY SURVEYOR
CORNER MONUMENT RECOVERY & REFERENCE RECORD

TOWNSHIP: 4 RANGE: 3 SECTION: 17

CORNER REF. LD. 5-M
DATE: 5/1/09

MONUMENT INFORMATION

LOCATION: COMMON CORNER to SEC. 17-18-19-20

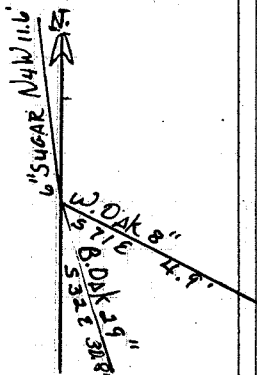
DESCRIPTION: #5 x 4" CEMENTED IN A LIMESTONE shelf w/disk

ADDITIONAL DISTINGUISHING CHARACTERISTICS:
CARSONITE POST 1.8' South

REMOVED: () YES DATE: 1/1

WITNESS MARKERS

TYPE	SIGN	BLAZE	ADDITION DESCRIPTION
1. W. DAK 8" w/SIGN	()	()	S 71 E 4.9'
2. 6" Sugar	()	()	N 4 W 11.6'
3. 2 1/2" B. DAK	()	()	S 32 E 30.8'



	1	2	3	4	5	6	7	8	9	10	11	12	13	14	15	16	17	18	19	20	21	22	23	24
A																								
B																								
C																								
D																								
E																								
F																								
G																								
H																								
I																								
J																								
K																								
L																								
M																								
N																								
O																								
P																								
Q																								
R																								
S																								
T																								
U																								
V																								
W																								
X																								
Y																								
Z																								

COVERED BY: V. McCauley

DATE: 5/1/09
DATE:
DATE:

VERENCED BY: TOB

DATE: 8/3/09
DATE:
DATE:

RECORDED IN PERPETUATION RECORDS BOOK:
BY: Thomas O. Buhle

DATE: 8/6/09

Point No. 459

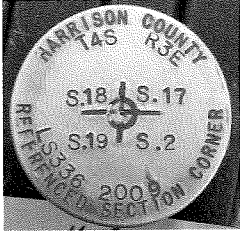
Harrison Co. No. _____

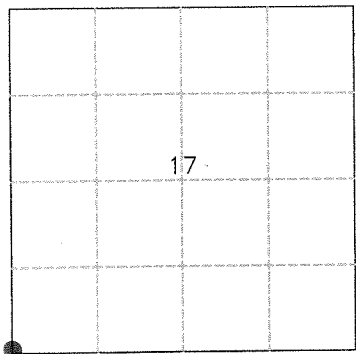
5-M

T 4 S R 3 E 2nd Mer. County Harrison State Indiana

Section Corner common to Sections 17 and 18, 19 & 20

EXISTING SURVEYS

Original Government Survey	Original Evidence Found
Year surveyed <u>N/A</u> Original monument _____ <small>(wood post, stone, pile of stones, etc.)</small> <hr/> <p style="text-align: center;">Bearing Trees</p> Species _____ Diameter _____ Bearing _____ Distance _____	Year of search _____ By _____ Monument found _____ <hr/> <p style="text-align: center;">Original Bearing Trees Found</p> Species _____ Diameter _____ Bearing _____ Distance _____
Subsequent Corner Restoration	Evidence of Subsequent Corner Restoration Found
Year surveyed <u>Circa 1980</u> By _____ Where filed or recorded _____ Monument _____ <small>(Original, concrete post, iron rod, etc...)</small> <hr/> <p style="text-align: center;">Bearing Trees, Reference Objects</p> Species _____ Diameter _____ Bearing _____ Distance _____	Year of search <u>2009</u> By <u>VHM</u> See Report. _____ 



Relation of Evidence to Record Features Along Section Lines

Section line to sections _____
 Object _____
 Record Distance _____
 Measured Distance _____

Other Evidence

Describe evidence of use and occupation such as roads, fences, clearings, timber cutting lines, plantations, etc... Cite source of testimony, If any. _____

Perpetuation Record

Monument and accessories established. Include brief description of area. Set #5 by 4" cemented in a limestone shelf with 3/4" aluminum disk. Set Carsonite Post 1.8' South.

W. Oak W/sign	Sugar	B. Oak	Steel pin w/cap
8"	6"	29"	L.S. 0131
S 71° E	N 4° W	S 32° E	North
4.9'	11.6'	30.8'	9.8'
MN + 1.0'	MN + 1.0'	MN + 1.0'	
S. Side	W. Side	E. Side	

At time of search:

- Did you have the record description? Yes X No _____
- How was search area located? pacing, chaining, photo, maps, etc. SURVEYING
- Man hours spent in search N/A
- Do you think additional search might recover evidence? Yes _____ No X
- Signature Vit H. M.

Certified corner restoration certificate prepared Yes _____ No X
 Filed in county records at _____ Date _____ County No. _____
 Identified on aerial photo No. _____ Which is filed at _____

HARRISON

COUNTY

CORNER 5-0

TOWNSHIP 4 S

RANGE 3 E

EAST 2ND

PRINCIPAL MERIDIAN

5-0

LOCATION	DESCRIPTION OF		DISTANCE FROM CORNER	BEARING FROM CORNER	DATE CHECKED	CHECKED BY	FIELD BOOK	REMARKS
	MONUMENT	REFERENCE						
1/4 Corner to Sec 19-20	# 5 w/ disk	21" B Oak w/sign	7.7'	N 21 W	6/09	TOB	6/26	Carsonite Post 0.3' NW
		9" Sugar	18.2'	N 84 E				
		8" Sugar	20.8'	N 86 W				
		Fence Corn Post	23.0'	N 2 W				

5-0

CORNERS RESTORED CONTINUED

Q-5 QUARTER CORNER TO SECTIONS 19 & 20, T-4-S, R-3-E, CONTINUED
THE POSITION OF THIS CORNER IS SUPPORTED BY VERY OLD AND DISTINCT CULTURAL FEATURES IN THE VICINITY. SET #5 BY 30" PIN W/3/4" ALUMINUM DISK PROJECTING 0.2' IN A LIMESTONE OUTCROP. THE DISK IS STAMPED TO DEPICT THE CORNER POSITION AND A CAIRN OF ROCKS WAS PLACED AROUND THE MONUMENT. ACCESSORIES ESTABLISHED:
CARSONITE POST, NORTHWEST, 0.3'
B. OAK 21" W/SIGN, N21°W, 7.7', MAG NAIL 1' UP ON E FACE
SUGAR 9", N84°E, 18.2', MAG NAIL 1' UP ON S SIDE
SUGAR 8", N86°W, 20.8', MAG NAIL 1' UP ON S FACE
FENCE CORNER POST, N2°W, 23.0', MAG NAIL 1' UP ON E SIDE

Q-5 SECTION CORNER TO SECTIONS 19, 20, 29 & 30, T-4-S, R-3-E
RESTORED CORNER POSITION PER CHAPTERS V & VI OF "THE MANUAL OF SURVEYING INSTRUCTIONS". RESTORED CORNER POSITION ON LINE AT VERY NEAR PROPORTIONAL DISTANCE BETWEEN VERIFIABLE MONUMENTS RECOVERED IN ALL CARDINAL DIRECTIONS (SEE Q-1 & Q-9 AND M-5 & R-5 ABOVE). THE POSITION OF THIS CORNER IS SUPPORTED BY ORIGINAL SURVEY (1806) CALLS AND BY VERY OLD AND DISTINCT CULTURAL FEATURES IN THE VICINITY. SET #5 BY 30" PIN W/3/4" ALUMINUM DISK STAMPED TO DEPICT THE CORNER POSITION. SEE COMMENTS IN THE NARRATIVE. ACCESSORIES ESTABLISHED:
CARSONITE POST, NORTH, 0.5'
CHERRY 20", N38°W, 14.9' MAG NAIL 1' UP ON S SIDE
SUGAR 9" W/SIGN, N18°E, 9.5', MAG NAIL 1' UP ON E SIDE
SASSAFRAS 5", S82°E, 14.3', MAG NAIL 1' UP ON N SIDE
SPC-LS900006, S29°43'E, 54.24' W/YELLOW CARSONITE POST. SEE EXHIBIT "G"

Q-7 QUARTER SECTION CORNER TO SECTIONS 20 & 29, T-4-S, R-3-E
RESTORED CORNER POSITION AT VERY NEAR PROPORTIONAL DISTANCE FROM SECTION CORNER TO THE WEST. (SEE Q-5 ABOVE). THE POSITION OF THIS CORNER IS SUPPORTED BY VERY OLD AND DISTINCT CULTURAL FEATURES IN THE VICINITY AND TESTIMONY BY SEVERAL LONG TIME LOCAL RESIDENTS. SET #5 BY 30" PIN W/3/4" ALUMINUM DISK STAMPED TO DEPICT THE CORNER POSITION. A CAIRN OF ROCKS WAS PLACED AROUND THE MONUMENT. SEE COMMENTS IN THE NARRATIVE. ACCESSORIES ESTABLISHED:
CARSONITE POST, NORTH, 0.6'
SUGAR 4", N40°W, 7.9', MAG NAIL 1' UP ON W SIDE
HICKORY 10" W/SIGN, S33°W, 8.4' (SLOPE), MAG NAIL 1' UP ON NW SIDE
ELM 12", S35°E, 19.8', MAG NAIL 1' UP ON W SIDE
EXISTING 3/4" ALL THREAD +5', N71°E, 4.35'

SURVEY FOR:
THOMAS O. BUBE
HARRISON COUNTY SURVEYOR
300 N. CAPITOL AVENUE
CORYDON, IN 47112

SURVEY BY:
MCCAULEY & COMPANY, INC., P.S.C.
PROFESSIONAL LAND SURVEYORS
P.O. BOX 39
ELIZABETH, IN 47117-0039
812-969-2186
E-mail mccauleypsc@verizon.net

JOB 10809

Point No. 446


Harrison Co. No. _____

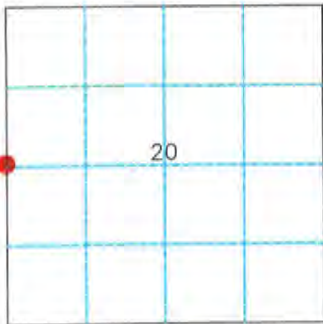
5-0

T 4 S R 3 E 2nd Mer. County Harrison State Indiana

1/4 Corner common to Sections 19 and 20

EXISTING SURVEYS

Original Government Survey	Original Evidence Found
Year surveyed <u>1805</u> Original monument <u>Wood Post</u> <small>(wood post, stone, pile of stones, etc.)</small> <hr/> Bearing Trees Species _____ Diameter _____ Bearing _____ Distance _____	Year of search <u>N/A</u> By _____ Monument found _____ <hr/> Original Bearing Trees Found Species _____ Diameter _____ Bearing _____ Distance _____
Subsequent Corner Restoration	Evidence of Subsequent Corner Restoration Found
Year surveyed _____ By _____ Where filed or recorded _____ Monument _____ <small>(Original, concrete post, iron rod, etc...)</small> <hr/> Bearing Trees, Reference Objects Species _____ Diameter _____ Bearing _____ Distance _____	Year of search _____ By _____ 



At time of search:

- Did you have the record description? Yes No _____
- How was search area located? pacing, chaining, photo, maps, etc. SURVEYING
- Man hours spent in search N/A
- Do you think additional search might recover evidence? Yes _____ No
- Signature Vicki H.M.

Relation of Evidence to Record Features Along Section Lines

Section line to sections _____
 Object _____
 Record Distance _____
 Measured Distance _____

Other Evidence

Describe evidence of use and occupation such as roads, fences, clearings, timber cutting lines, plantations, etc... Cite source of testimony, If any. _____

Perpetuation Record

Monument and accessories established. Include brief description of area. Set #5 by 30" with 3/4" aluminum disk. Placed a cairn around the monument.

B. Oak W/sign	Sugar	Sugar	Fence Corner	Carsonite
21"	9"	8"	Post	Post
N 21° W	N 84° E	N 86° W	N 2° W	Northwest
7.7'	18.2'	20.8'	23.0'	0.3'
MN + 1.0'	MN + 1.0'	MN + 1.0'	MN + 1.0'	
E. Side	S. Side	S. Side	E. Side	

Certified corner restoration certificate prepared Yes _____ No
 Filed in county records at _____ Date _____ County No. _____
 Identified on aerial photo No. _____ Which is filed at _____

CORNERS RESTORED CONTINUED

M-5 SECTION CORNER TO SECTIONS 17, 18, 19 & 20, T-4-S, R-3-E RESTORED CORNER POSITION ON LINE BETWEEN SECTIONS CORNERS TO THE NORTH & SOUTH (SEE I-5 & Q-5) AT RECORD DISTANCE FROM AN AXLE RECOVERED TO THE NORTH, PER TESTIMONY BY A LONG TIME LOCAL RESIDENT. THE POSITION OF THIS CORNER IS SUPPORTED BY VERY OLD AND DISTINCT CULTURAL FEATURES IN THE VICINITY. SET #5 BY 4" PIN CEMENTED IN A DRILL HOLE IN A LIMESTONE SHELF, WITH 3/4" ALUMINUM DISK STAMPED TO DEPICT THE CORNER POSITION. ACCESSORIES ESTABLISHED:

- CARSONITE POST, SOUTH, 1.8'
- W. OAK 8" W/SIGN, S71°E, 4.9', MAG NAIL 1' UP ON S SIDE
- SUGAR 6", N4°W, 11.6', MAG NAIL 1' UP ON W SIDE
- B. OAK 29", S32°E, 30.8' MAG NAIL 1' UP ON E SIDE
- SPC-LS20200046, N11°19'E, 9.80' SEE SURVEY RECORDED AS INSTRUMENT 200401097.
- FENCE CORNER POST-LS131, S2°37'E, 24.24' SEE SURVEY RECORDED AS INSTRUMENT 20006836. ALSO SEE SURVEYS RECORDED AS 200401097 AND

M-7 QUARTER CORNER TO SECTIONS 17 & 20, T-4-S, R-3-E RESTORED CORNER POSITION PER CHAPTERS V & VI OF "THE MANUAL OF SURVEYING INSTRUCTIONS". RESTORED CORNER POSITION ON LINE AT VERY NEAR PROPORTIONAL DISTANCE BETWEEN SECTION CORNERS TO THE EAST & WEST (SEE M-5 & M-9) AND MONUMENTS RECOVERED TO THE NORTH & SOUTH. THE POSITION OF THIS CORNER IS SUPPORTED BY VERY OLD AND DISTINCT CULTURAL FEATURES IN THE VICINITY AND BY TESTIMONY BY SEVERAL LONG TIME LOCAL RESIDENTS. SET #5 BY 1' PIN 0.5' DEEP WITH A MAG HUB SET IN A CONCRETE PLUG OVER THE PIN. THE MONUMENT IS NEAR THE CENTERLINE OF DIXIE ROAD, 9' NORTH OF FAIRVIEW CHURCH ROAD (TO THE EAST). NO REFERENCE FOR THE CORNER WAS PROVIDED BY THE COUNTY SURVEYOR. SEE COMMENTS IN THE NARRATIVE. ACCESSORIES ESTABLISHED:

- UTILITY POLE W/SIGN, S21°W, 85.0', MAG NAIL 1' UP ON SE FACE
- WATER VALVE, S39°W, 48.5'
- TELEPHONE PEDESTAL, N68°E, 28.0'
- SUGAR 15", N68°W, 38.0', MAG NAIL 1' UP ON S SIDE
- 1" PIN, 1' DEEP, S22°39'W, 17.69'. THIS PIN HAS BEEN USED BY SEVERAL LOCAL SURVEYORS FOR NEARLY 30 YEARS. THE PIN WAS SET IN 1980 BY LS131, A COPY OF THE 1980 SURVEY IS ATTACHED HERETO AS EXHIBIT "F" AND MADE A PART HEREOF. SEE 1995 SURVEY RECORDED AS SURVEY BOOK 2, PAGE 419, WHICH ESTABLISHES THE CS 1/16th CORNER. ALSO SEE SURVEYS RECORDED AS INSTRUMENTS 200401097, 20006836 AND 200800992.

Q-5 QUARTER CORNER TO SECTIONS 19 & 20, T-4-S, R-3-E RESTORED CORNER POSITION PER CHAPTERS V & VI OF "THE MANUAL OF SURVEYING INSTRUCTIONS". RESTORED CORNER POSITION ON LINE AND EQUIDISTANT BETWEEN SECTION CORNERS TO THE NORTH & SOUTH (SEE M-5 & Q-5) AND MONUMENTS RECOVERED TO THE EAST.

SURVEY FOR:
THOMAS O. BUBE
HARRISON COUNTY SURVEYOR
300 N. CAPITOL AVENUE
CORYDON, IN 47112

SURVEY BY:
MCCAULEY & COMPANY, INC., P.S.C.
PROFESSIONAL LAND SURVEYORS
P.O. BOX 39
ELIZABETH, IN 47117-0039
812-969-2186
E-mail mccauleycpsc@verizon.net

5-0

HARRISON COUNTY SURVEYOR ^{6/26}
CORNER MONUMENT RECOVERY & REFERENCE RECORD

TWNSHP: 4 RANGE: 3 SECTION: 20 CORNER REF. ID: 5-0
DATE: / /

MONUMENT INFORMATION

LOCATION: 1/4 CORNER Common to Sec. 19+20

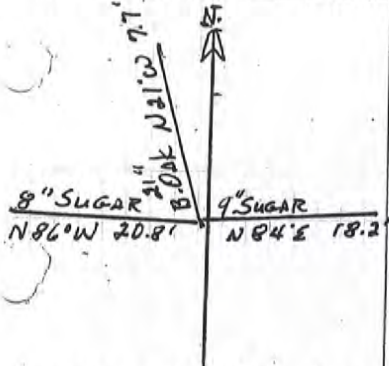
DESCRIPTION: #5 w/disk

ADDITIONAL DISTINGUISHING CHARACTERISTICS:
CARSONITE POST .3' NORTHWEST

SIGN PLACED: YES DATE: 5/1/09

WITNESS MARKERS

TYPE	SIGN	BLAZE	ADDITION DESCRIPTION
1. OAK 21"	(X)	()	N 21° W 7.7'
2. 9" SUGAR	()	()	N 84° E 18.2'
3. 8" SUGAR	()	()	N 86° W 20.8'



	1	2	3	4	5	6	7	8	9	10	11	12	13	14	15	16	17	18	19	20	21	22	23	24
A																								
B																								
C																								
D																								
E																								
F																								
G																								
H																								
I																								
J																								
K																								
L																								
M																								
N																								
O																								
P																								
Q																								
R																								
S																								
T																								
U																								
V																								
W																								
X																								
Y																								
Z																								

RECOVERED BY: V. McCauley

DATE: 5/1/09
DATE: / /
DATE: / /

REFERENCED BY: TOB

DATE: / /
DATE: / /
DATE: / /

RECORDED IN PERPETUATION RECORDS BOOK:
BY: _____

DATE: / /

HARRISON

TY

5-Q

CORNER 5-0 TOWNSHIP 4 S RANGE 3 E EAST 2ND PRINCIPAL MERIDIAN

LOCATION	DESCRIPTION OF		DISTANCE FROM CORNER	BEARING FROM CORNER	DATE CHECKED	CHECKED BY	FIELD BOOK	REMARKS
	MONUMENT	REFERENCE						
Common Corner Sec. 19-20- 29-30	#5 w/disk	20" Cherry	14.9'	N 38 W	5/09	TOB	6/58	Carsonite Post 0.5' N
		9" Sugar w/ sign	9.5'	N 18 E				
		5" Sassafras	14.3'	S 82 E				


Point No. 445

Harrison Co. No. 5-Q

T 4 S R 3 E 2nd Mer. County Harrison State Indiana

Section Corner common to Sections 19 and 20, 29 & 30

EXISTING SURVEYS

Original Government Survey	Original Evidence Found
Year surveyed <u>1805</u> Original monument _____ <small>(wood post, stone, pile of stones, etc.)</small>	Year of search <u>N/A</u> By _____ Monument found _____
Bearing Trees	Original Bearing Trees Found
Species _____ Diameter _____ Bearing _____ Distance _____	Species _____ Diameter _____ Bearing _____ Distance _____
Subsequent Corner Restoration	Evidence of Subsequent Corner Restoration Found
Year surveyed _____ By _____ Where filed or recorded _____ Monument _____ <small>(Original, concrete post, iron rod, etc...)</small>	Year of search <u>2009</u> By <u>VHM</u> <u>Recovered Pettitt (L.S. 0006) steel pin with cap, 54'± Southeast of true corner.</u>
Bearing Trees, Reference Objects	
Species _____ Diameter _____ Bearing _____ Distance _____	



Relation of Evidence to Record Features Along Section Lines

Section line to sections _____
Object _____
Record Distance _____
Measured Distance _____

Other Evidence

Describe evidence of use and occupation such as roads, fences, clearings, timber cutting lines, plantations, etc... Cite source of testimony, If any. _____

Perpetuation Record

Monument and accessories established. Include brief description of area. Set #5 by 30" with 3/4" aluminum disk 28'± South of Spring Branch.

Cherry	Sugar w/sign	Sassafras	Carsonite
20"	9"	5"	Post
N 38° W	N 18° E	S 82° E	North
14.9'	9.5'	14.3'	0.5'
MN + 1.0'	MN + 1.0'	MN + 1.0'	
S. Side	E Side	N. Side	

- At time of search:
- Did you have the record description? Yes No _____
 - How was search area located? pacing, chaining, photo, maps, etc. SURVEYING
 - Man hours spent in search N/A
 - Do you think additional search might recover evidence? Yes _____ No
 - Signature VHM

Certified corner restoration certificate prepared Yes _____ No
Filed in county records at _____ Date _____ County No. _____
Identified on aerial photo No. _____ Which is filed at _____

5-Q

6/58

HARRISON COUNTY SURVEYOR
CORNER MONUMENT RECOVERY & REFERENCE RECORD

WNHP: 4 RANGE: 3 SECTION: 20

CORNER REF. LD.: 5-Q
DATE: 5/1/09

MONUMENT INFORMATION

LOCATION: COMMON CORNER SEC. 19-20-29-30

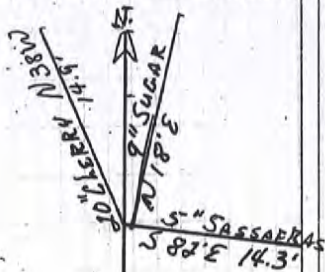
DESCRIPTION: #5 w/disk S. of Spring Branch

ADDITIONAL DISTINGUISHING CHARACTERISTICS: _____

MONUMENT PLACED: () YES DATE: 1/1/

WITNESS MARKERS

TYPE	SIGN	BLAZE	ADDITION DESCRIPTION
1 20" CHERRY	()	()	N 38°W 14.9'
2 9" SUGAR	(X)	()	N 18°E 9.5'
3 SASSAPARA 5"	()	()	S 82°E 14.3'



1	2	3	4	5	6	7	8	9	10	11	12	13	14	15	16	17	18	19	20	21	22	23	24	
A																								
B																								
C																								
D																								
E																								
F																								
G																								
H																								
I																								
J																								
K																								
L																								
M																								
N																								
O																								
P																								
Q																								
R																								
S																								
T																								
U																								
V																								
W																								
X																								

RECOVERED BY: H. McLouley

DATE: 5/1/09
DATE: / /
DATE: / /

REFERENCED BY: TOTB

DATE: 8/3/09
DATE: / /
DATE: / /

RECORDED IN PERPETUATION RECORDS BOOK:
BY: Thomas O. Balle

DATE: 8/6/09

CORNERS RECOVERED CONTINUED

Q-9 SECTION CORNER TO SECTIONS 20, 21, 28 & 29, T-4-S, R-3-E, CONTINUED THE STONE WAS REPLACED WITH A #5 BY 30" PIN WITH 3/4" ALUMINUM CAP STAMPED TO DEPICTED THE CORNER POSITION. THE POSITION OF THE SPC IS SUPPORTED BY MEASUREMENTS TO ADJACENT CORNERS AND VERY OLD AND DISTINCT CULTURAL FEATURES IN THE VICINITY. ACCESSORIES ESTABLISHED:

- CARSONITE POST, NORTH, 0.6'
- W. OAK 37", N4°E, 35.0'
- B. OAK 13", S23°E, 39.0', MAG NAIL 1' UP IN W SIDE
- FENCE BRACE POST W/SIGN, WEST, 0.5'

Q-11 QUARTER CORNER TO SECTIONS 21 & 28, T-4-S, R-3-E RECOVERED #4 SPC, LS131, PROJECTING 1'. THE MONUMENT IS AT AN OLD DOWN FENCE CORNER POST. THE CORNER IS SHOWN ON THE 1995 SURVEY BY LS131, SEE SURVEY BOOK 2, PAGE 254, BUT NO MONUMENT IS DEPICTED. THE 2007 SURVEY BY LS365 CALLS FOR #5 SPC, PROJECTING 10" AND HCSM. NO REFERENCE FOR THE CORNER WAS PROVIDED BY THE COUNTY SURVEYOR AND NO RECORDED SURVEY WAS DISCOVERED DURING RESEARCH FOR THIS SURVEY. WE USED THE AUDITOR'S FILES FOR A COPIES OF LS365 SURVEYS. THE POSITION OF THE SPC IS SUPPORTED BY MEASUREMENTS TO ADJACENT CORNERS AND VERY OLD AND DISTINCT CULTURAL FEATURES IN THE VICINITY. ACCESSORIES ESTABLISHED:

- CARSONITE POST, SOUTH, 0.5'
- HACKBERRY 18", N18°E, 4.6', MAG NAIL 1' UP ON E SIDE
- WALNUT 8", S27°E, 6.6', MAG NAIL 1' UP ON W SIDE
- SUGAR 10" W/SIGN, N77°W, 11.6', MAG NAIL 1' UP ON S SIDE

Q-13 SECTION CORNER TO SECTIONS 21, 22, 27 & 28, T-4-S, R-3-E RECOVERED AN AXLE 0.7' DEEP IN HEIDELBERG ROAD, 8' EAST OF THE WEST. THE POSITION OF THIS CORNER IS SUPPORTED BY MEASUREMENTS TO ADJACENT CORNERS AND VERY OLD AND DISTINCT CULTURAL FEATURES IN THE VICINITY. SEE SURVEYS RECORDED IN SURVEY BOOK 4, PAGE 28 AND INSTRUMENT NUMBERS 200503223, 200603719 & 200700670. A MAG HUB WAS SET IN A CONCRETE PLUG OVER THE MONUMENT. ACCESSORIES ESTABLISHED:

- TELEPHONE PEDESTAL, N56°E, 22.0'
- CHERRY 8" W/SIGN, N44°W, 21.3' MAG NAIL 1' UP ON SW SIDE
- MAPLE 12", S36°E, 68.5'

S-5 QUARTER CORNER TO SECTIONS 29 & 30, T-4-S, R-3-E CORNER "R" PER 2002 DNR SURVEY WHICH IS ATTACHED HERETO AND MADE A PART HEREOF AS EXHIBIT "G". SEE EXHIBIT "G" FOR ACCESSORIES.

CORNERS RESTORED

I-5 SECTION CORNER TO SECTIONS 7, 8, 17 & 18, T-4-S, R-3-E RESTORED CORNER POSITION PER CHAPTERS V & VI OF "THE MANUAL OF SURVEYING INSTRUCTIONS". RESTORED CORNER POSITION ON LINE AT PROPORTIONAL DISTANCE BETWEEN VERIFIABLE STONES RECOVERED TO THE EAST & WEST (SEE I-3 & I-7 ABOVE).

**SURVEY FOR:
THOMAS O. BUBE
HARRISON COUNTY SURVEYOR
300 N. CAPITOL AVENUE
CORYDON, IN 47112**

**SURVEY BY:
MCCAULEY & COMPANY, INC., P.S.C.
PROFESSIONAL LAND SURVEYORS
P.O. BOX 39
ELIZABETH, IN 47117-0039
812-969-2186
E-mail mccauleypsc@verizon.net**

JOB 10809

G-K

CORNERS RECOVERED CONTINUED

J-10 NW 1/16th CORNER IN SECTION 16, T-4-S, R-3-E
RECOVERED SANDSTONE OUT OF GROUND AND A 3/4" PIPE AT A 90° FENCE CORNER. THE STONE WAS RESET PER THE COUNTY SURVEYOR'S 1989 RECOVERY NOTES. THE STONE IS 0.2' BY 0.5' PROJECTING 0.4'. A CAIRN OF ROCKS WERE PLACED AROUND THE STONE. THIS IS CORNER "I" PER 1890 LEGAL SURVEY, SEE LEGAL SURVEY BOOK 1, PAGE 152. ACCESSORIES ESTABLISHED:
CARSONITE POST, SOUTH, 0.5'
BEECH 5" W/SIGN, N64°E, 17.2', MAG NAIL 1.5' UP ON S SIDE
TRIPLE POPLAR W/FORK W/OLD SIGN, S8°E, 7.9' MAG NAIL 1.5' UP ON NW SIDE
POPLAR 28", N5°E, 15.6', MAG NAIL 1.5' UP ON E SIDE
FENCE POST W/OLD SIGN, S60°W, 0.8', MAG NAIL 0.6' UP ON E SIDE

J-11 CN 1/16th CORNER IN SECTION 16, T-4-S, R-3-E
RECOVERED 3/4" PIPE PROJECTING 0.8'. THIS CORNER WAS SET DURING 1989 SURVEY BY LS131, JOB #89-3786. A RECORDED COPY OF THIS SURVEY WAS NOT DISCOVERED DURING RESEARCH FOR THIS SURVEY. THIS IS CORNER "I" PER 1890 LEGAL SURVEY, SEE LEGAL SURVEY BOOK 1, PAGE 152. THE 1890 SURVEY CALLS FOR A ROCK AT THIS CORNER. BASED ON THE MEASUREMENTS CITED IN BOTH SURVEYS AND THE VERY OLD AND DISTINCT CULTURAL FEATURES IN THE VICINITY, THE PIPE WAS ACCEPTED AS THE TRUE CORNER. THE 1989 SURVEY IS ATTACHED HERETO AND MADE A PART HERE OF AS EXHIBIT "D". ACCESSORIES ESTABLISHED:
CARSONITE POST, EAST, 0.6'
SUGAR 13" W/SIGN, N89°W, 4.0' MAG NAIL 1' UP IN N SIDE
SUGAR 19", S14°W, 12.9', MAG NAIL 1' UP IN E SIDE
ASH 22", S62°E, 9.3', MAG NAIL 1' UP IN SW SIDE

J-13 NORTH 1/16th CORNER TO SECTIONS 15 & 16, T-4-S, R-3-E
RECOVERED RAILROAD SPIKE OF UNKNOWN ORIGIN 0.8' DEEP IN WINDELL LANE. THE CORNER IS 5' S OF THE NEP. THE POSITION OF THIS CORNER IS SUPPORTED BY MEASUREMENTS TO ADJACENT CORNERS, VERY OLD AND DISTINCT CULTURAL EVIDENCE IN THE VICINITY AND TESTIMONY BY LONG TIME LOCAL RESIDENTS. A MAG HUB WAS SET IN A CONCRETE PLUG OVER THE CORNER. ACCESSORIES ESTABLISHED:
UTILITY POLE, S78°W, 55.5', MAG NAIL 1' UP IN N SIDE
UTILITY POLE W/SIGN, N8°E, 23.2', MAG NAIL 1' UP IN W SIDE
UTILITY POLE, S68°E, 77.7', MAG NAIL 1' UP IN N SIDE
MAIL BOX POST, S10°E, 18.3'

K-6 CW 1/16th CORNER IN SECTION 17, T-4-S, R-3-E
RECOVERED LIMESTONE PER LOCAL DEEDS AND 2002 SURVEY BY LS131, JOB #02-8847. A RECORDED COPY THIS SURVEY WAS NOT RECOVERED DURING RESEARCH FOR THIS PROJECT, THE SURVEY COPY USED IS FROM THE AUDITOR'S OFFICE, WHICH IS ATTACHED HERETO AND MAD A PART HEREOF AS EXHIBIT "E". THE STONE IS OF UNKNOWN ORIGIN BUT CITED IN SEVERAL OLD DEEDS IN THIS VICINITY. THE STONE IS 0.5' BY 0.3' PROJECTING 0.6', WITH A #5SPC-LS131 ON THE EAST SIDE AT A FENCE CORNER.

SURVEY FOR:
THOMAS O. RUBE
HARRISON COUNTY SURVEYOR
300 N. CAPITOL AVENUE
CORYDON, IN 47112

SURVEY BY:
MCCAULEY & COMPANY, INC., P.S.C.
PROFESSIONAL LAND SURVEYORS
P.O. BOX 39
ELIZABETH, IN 47117-0039
812-969-2186
E-mail mccauleypsc@verizon.net

JOB 10809

5-Q

CORNERS RESTORED CONTINUED

Q-5 QUARTER CORNER TO SECTIONS 19 & 20, T-4-S, R-3-E, CONTINUED
 THE POSITION OF THIS CORNER IS SUPPORTED BY VERY OLD AND
 DISTINCT CULTURAL FEATURES IN THE VICINITY. SET #5 BY 30" PIN W/3/4"
 ALUMINUM DISK PROJECTING 0.2' IN A LIMESTONE OUTCROP. THE DISK IS
 STAMPED TO DEPICT THE CORNER POSITION AND A CAIRN OF ROCKS WAS
 PLACED AROUND THE MONUMENT. ACCESSORIES ESTABLISHED:
 CARSONITE POST, NORTHWEST, 0.3'
 B. OAK 21" W/SIGN, N21°W, 7.7', MAG NAIL 1' UP ON E FACE
 SUGAR 9", N84°E, 18.2', MAG NAIL 1' UP ON S SIDE
 SUGAR 8", N86°W, 20.8', MAG NAIL 1' UP ON S FACE
 FENCE CORNER POST, N2°W, 23.0', MAG NAIL 1' UP ON E SIDE

Q-5 SECTION CORNER TO SECTIONS 19, 20, 29 & 30, T-4-S, R-3-E
 RESTORED CORNER POSITION PER CHAPTERS V & VI OF "THE MANUAL
 OF SURVEYING INSTRUCTIONS". RESTORED CORNER POSITION ON LINE AT
 VERY NEAR PROPORTIONAL DISTANCE BETWEEN VERIFIABLE MONUMENTS
 RECOVERED IN ALL CARDINAL DIRECTIONS (SEE Q-1 & Q-9 AND M-5 & R-5
 ABOVE). THE POSITION OF THIS CORNER IS SUPPORTED BY ORIGINAL
 SURVEY (1806) CALLS AND BY VERY OLD AND DISTINCT CULTURAL
 FEATURES IN THE VICINITY. SET #5 BY 30" PIN W/3/4" ALUMINUM DISK
 STAMPED TO DEPICT THE CORNER POSITION. SEE COMMENTS IN THE
 NARRATIVE. ACCESSORIES ESTABLISHED:
 CARSONITE POST, NORTH, 0.5'
 CHERRY 20", N38°W, 14.9' MAG NAIL 1' UP ON S SIDE
 SUGAR 9" W/SIGN, N18°E, 9.5', MAG NAIL 1' UP ON E SIDE
 SASSAFRAS 5", S82°E, 14.3', MAG NAIL 1' UP ON N SIDE
 SPC-LS900006, S29°43'E, 54.24' W/YELLOW CARSONITE POST. SEE EXHIBIT "G"

Q-7 QUARTER SECTION CORNER TO SECTIONS 20 & 29, T-4-S, R-3-E
 RESTORED CORNER POSITION AT VERY NEAR PROPORTIONAL
 DISTANCE FROM SECTION CORNER TO THE WEST. (SEE Q-5 ABOVE).
 THE POSITION OF THIS CORNER IS SUPPORTED BY VERY OLD AND
 DISTINCT CULTURAL FEATURES IN THE VICINITY AND TESTIMONY BY
 SEVERAL LONG TIME LOCAL RESIDENTS. SET #5 BY 30" PIN W/3/4"
 ALUMINUM DISK STAMPED TO DEPICT THE CORNER POSITION. A CAIRN OF
 ROCKS WAS PLACED AROUND THE MONUMENT. SEE COMMENTS IN THE
 NARRATIVE. ACCESSORIES ESTABLISHED:
 CARSONITE POST, NORTH, 0.6'
 SUGAR 4", N40°W, 7.9', MAG NAIL 1' UP ON W SIDE
 HICKORY 10" W/SIGN, S33°W, 8.4' (SLOPE), MAG NAIL 1' UP ON NW SIDE
 ELM 12", S35°E, 19.8', MAG NAIL 1' UP ON W SIDE
 EXISTING 3/4" ALL THREAD +5', N71°E, 4.35'

SURVEY FOR:
 THOMAS O. BUBE
 HARRISON COUNTY SURVEYOR
 300 N. CAPITOL AVENUE
 CORYDON, IN 47112

SURVEY BY:
 MCCAULEY & COMPANY, INC., P.S.C.
 PROFESSIONAL LAND SURVEYORS
 P.O. BOX 39
 ELIZABETH, IN 47117-0039
 812-969-2186
 E-mail mccauleypsc@verizon.net

JOB 10809

6-B

CORNER 6-B

TOWNSHIP 4 SOUTH

RANGE 3 EAST

LOCATION	DESCRIPTION OF MONUMENT		DISTANCE FROM CORNER	BEARING FROM CORNER	DATE CHECKED	CHECKED BY	FIELD BOOK	REMARKS
	MONUMENT	REFERENCE						
N.E. Corner S.W. 1/4 N.W. 1/4 Section 5	Stone	8" Cedar	21.27		1-23-84	T.B.	#2 Pg. 41	Sign Place
		9" Cedar	20.5	N87-04E	1-23-84	T.B.		Sign Placed
		4" Maple	14.73	S37-24W	1-23-84	T.B.		Sign Placed

ALL Trees have a blaze
With a aluminum nail in
middle. All Trees have a
witness sign

Party Chief T. Brown

Head Chain A. Clements

Recr Chain B. Cain

↑ NORTH

DATE 1-23-84

G-B

0.70 @ cedar, nail on west side +
1.5 up from ground

21.27

N 87-04 E

20.5

0.80 @ cedar, nail on
north side + 1.1' up
from ground

0.35 @ maple, nail on
south side + 1.2 up
from ground

S 37-24 W
14.73

Stone is .80 X .20 X .60 out of
ground. Stone is marked with
a metal post + sign on north
side

N.E. Cor., S W 1/4 NW 1/4

Sec 5, T4S, R3E

Point No. 235


Harrison Co. No. _____

G-K

T 4 S R 3 E 2nd Mer. County Harrison State Indiana

CW 1/16 Corner common to Section 17 and _____

EXISTING SURVEYS

Original Government Survey	Original Evidence Found
Year surveyed <u>N/A</u> Original monument _____ <small>(wood post, stone, pile of stones, etc.)</small> <hr/> <p style="text-align:center;">Bearing Trees</p> Species _____ Diameter _____ Bearing _____ Distance _____	Year of search _____ By _____ Monument found _____ <hr/> <p style="text-align:center;">Original Bearing Trees Found</p> Species _____ Diameter _____ Bearing _____ Distance _____
Subsequent Corner Restoration	Evidence of Subsequent Corner Restoration Found
Year surveyed _____ By _____ Where filed or recorded _____ Monument _____ <small>(Original, concrete post, iron rod, etc...)</small> <hr/> <p style="text-align:center;">Bearing Trees, Reference Objects</p> Species _____ Diameter _____ Bearing _____ Distance _____	Year of search <u>2009</u> By <u>VHM</u> <u>Recovered Limestone 0.5' by 0.3' with Primavera (L.S. 0131) steel pin with cap on East Side.</u> 



At time of search:

1. Did you have the record description? Yes X No _____
2. How was search area located?
pacing, chaining, photo, maps, etc. SURVEYING
3. Man hours spent in search N/A
4. Do you think additional search might recover evidence? Yes _____
No X
5. Signature Vick H. May

Relation of Evidence to Record Features Along Section Lines

Section line to sections _____
 Object _____
 Record Distance _____
 Measured Distance _____

Other Evidence

Describe evidence of use and occupation such as roads, fences, clearings, timber cutting lines, plantations, etc... Cite source of testimony, If any. _____

Perpetuation Record

Monument and accessories established. Include brief description of area. The stone was left in place as recovered.

Sugar	Sugar w/sign	Fence	Carsonite
9"	9"	Post	Post
N 25° E	S 39° E	N 84° W	West
5.5'	6.3'	1.2'	0.5'
MN + 1.0'	MN + 1.0'	MN + 1.0'	
SE. Side	SW Side	N. Side	

Certified corner restoration certificate prepared Yes _____ No X
 Filed in county records at _____ Date _____ County No. _____
 Identified on aerial photo No. _____ Which is filed at _____

G-K

CORNERS RECOVERED CONTINUED

K-6 CW 1/16th CORNER IN SECTION 17, T-4-S, R-3-E CONTINUED
THE POSITION OF THE STONE IS SUPPORTED BY MEASUREMENTS TO ADJACENT CORNERS AND VERY OLD AND DISTINCT CULTURAL FEATURES IN THE VICINITY. THE STONE WAS LEFT IN PLACE AS RECOVERED. ACCESSORIES ESTABLISHED:

- CARSONITE POST, WEST, 0.5'
- SUGAR 9", N25°E, 5.5', MAG NAIL 1' UP IN SE SIDE
- SUGAR 9" W/SIGN, S39°E, 6.3', MAG NAIL 1' UP IN SW SIDE
- FENCE POST, N84°W, 1.2', MAG NAIL 1' UP IN N SIDE

K-11 CENTER QUARTER CORNER IN SECTION 16, T-4-S, R-3-E
RECOVERED SANDSTONE WITH OLD STYLE STEEL POST AND YELLOW HARRISON COUNTY SURVEYOR'S SIGN. THE STONE IS 0.4' BY 0.5' PROJECTING 0.2', WITH A 3/4" PIPE 0.3' SOUTH. THE STONE WAS LEFT IN PLACE AS RECOVERED. SEE EXHIBIT "D". ACCESSORIES ESTABLISHED:

- MAPLE 12", N70°W, 9.9', MAG NAIL 1' UP IN S SIDE
- MAPLE 9", N36°E, 12.5' (SLOPE), MAG NAIL 1' UP IN SE SIDE
- W. OAK 14", S72°E, 7.8', MAG NAIL 1' UP IN N SIDE
- MAPLE 18", S15°E, 13.0', MAG NAIL 1' UP IN E SIDE

M-3 QUARTER CORNER TO SECTIONS 18 & 19, T-4-S, R-3-E
STONE PER 2006 SURVEY BY LS451 AND OF RECORD AS INSTRUMENT #200701409. SEVERAL MONUMENTS DEPICTED ON THIS SURVEY WERE TIED TO VERIFY THE POSITION OF THIS STONE. NO ACCESSORIES ESTABLISHED THIS SURVEY.

M-9 SECTION CORNER TO SECTIONS 16, 17, 20 & 21, T-4-S, R-3-E
RECOVERED VERY OLD, RUSTED AND DETERIORATED PIPE PER TESTIMONY BY SEVERAL LONG TIME LOCAL RESIDENTS. A MAG NAIL BY LS365 WAS RECOVERED, S15°E, 14' FROM THE PIPE. THE 2005 SURVEY PERFORMED BY LS365 CITES "SET MAG NAIL OVER SPIKE-----HCSM." NO REFERENCE FOR THE CORNER WAS PROVIDED BY THE COUNTY SURVEYOR AND NO RECORDED SURVEY WAS DISCOVERED DURING RESEARCH FOR THIS SURVEY. WE USED THE AUDITOR'S FILES FOR A COPIES OF LS365 SURVEYS. THE MAG NAIL WAS REMOVED AND WE DID NOT FIND A SPIKE UNDER THE LS365 NAIL. THE 2005 LS365 SURVEY WAS COMPARED WITH A 2007 SURVEY BY LS365 AND THE SURVEYS WOULD CREATE A HIATUS OF OVER 16' BETWEEN THEM. THEREFORE THE LS365 MAG NAIL WAS DISREGARDED. THE POSITION OF THE PIPE WAS VERIFIED BY MEASUREMENTS TO ADJACENT CORNER MONUMENTS AND BY VERY OLD AND DISTINCT CULTURAL FEATURES IN THIS VICINITY. THE PIPE WAS REPLACED WITH A #5 BY 30" REBAR W/ 3/4" ALUMINUM CAP STAMPED TO DEPICTED THE CORNER POSITION. THE CORNER POSITION IS 5' N OF THE NEP OF FAIRVIEW CHURCH ROAD. ACCESSORIES ESTABLISHED:

- CARSONITE POST, NORTH, 0.5'
- SASSAFRAS 15" W/SIGN & OLD WIRE, N4°W, 12.5', MAG NAIL 1' UP IN E SIDE
- FLUSH HYDRANT, N33°E, 23.3'
- TELEPHONE PEDESTAL POLE, S84°E, 57.8', MAG NAIL 1' UP IN N SIDE
- R. OAK 9", S28°W, 39.2', MAG NAIL 1' UP IN NW SIDE

SURVEY FOR:
THOMAS O. BUBE
HARRISON COUNTY SURVEYOR
300 N. CAPITOL AVENUE
CORYDON, IN 47112

SURVEY BY:
MCCAULEY & COMPANY, INC., P.S.C.
PROFESSIONAL LAND SURVEYORS
P.O. BOX 39
ELIZABETH, IN 47117-0039
812-969-2186
E-mail mccauleypsc@verizon.net

JOB 10809

6-K

HARRISON COUNTY SURVEYOR 6/56
CORNER MONUMENT RECOVERY & REFERENCE RECORD

TWNSHIP: 4 RANGE: 3 SECTION: 17

CORNER REF. LD: 6-K
DATE: 5 1 109

MONUMENT INFORMATION

LOCATION: CW 1/16

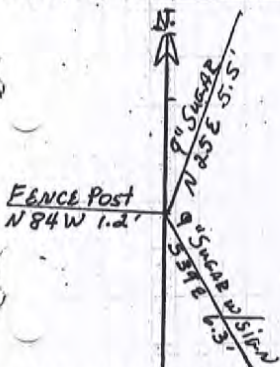
DESCRIPTION: LIMESTONE D. 5' x D. 3'
STEEL PIN w/ CAP ON EAST SIDE

ADDITIONAL DISTINGUISHING CHARACTERISTICS:
CARBONITE POST 0.5' W & S

SIGN PLACED: () YES DATE: 1 1

WITNESS MARKERS

TYPE	SIGN	BLAZE	ADDITION DESCRIPTION
1. 9" SUGAR	()	()	N 25 E 5.5'
2. 9" SUGAR w/ SIGN	(x)	()	S 39 E 6.3'
3. FENCE POST	()	()	N 84 W 1.2'



1	2	3	4	5	6	7	8	9	10	11	12	13	14	15	16	17	18	19	20	21	22	23	24	
6	5	4	3	2	1																			
7	8	9	10	11	12																			
13	14	15	16	17	18	19	20	21	22	23	24													
25	26	27	28	29	30	31	32	33	34	35	36													

COVERED BY: J. McCauley

DATE: 5 1 109
DATE: / /
DATE: / /

RECORDED BY: TOPB

DATE: 8 13 109
DATE: / /
DATE: / /

RECORDED IN PERPETUATION RECORDS BOOK:

Thomas O. Bube

DATE: 8 16 109

6-K

CORNER 6-K TOWNSHIP 4 S RANGE 3 E EAST 2ND PRINCIPAL MERIDIAN

LOCATION	DESCRIPTION OF		DISTANCE FROM CORNER	BEARING FROM CORNER	DATE CHECKED	CHECKED BY	FIELD BOOK	REMARKS
	MONUMENT	REFERENCE						
CW 1/16 Corner Sec 17	LIMESTONE 0.5'x0.3'	9" sugar	5.5'	N 25 E	5/09	TOB	6/56	Carsonite Post 0.5'W
		9" sugar w/ sign	6.3'	S 39 E				
		Fence Post	1.2'	N 84 W				

HARRISON

COUNTY

6-M

CORNER 6-M TOWNSHIP 4 S RANGE 3 E EAST 2ND PRINCIPAL MERIDIAN

LOCATION	DESCRIPTION OF		DISTANCE FROM CORNER	BEARING FROM CORNER	DATE CHECKED	CHECKED BY	FIELD BOOK	REMARKS
	MONUMENT	REFERENCE						
W 1/16 Corn. Common to 17-20	#5 w/disk	29" Poplar w/sign	10.9'	N 18 W	5/09	TOB	6/54	Carsonite Post 5.0'W
		25" Twin Poplar	29.5'	S 29 E				
		15" Beech	36.1'	S 68 E				

6-M

CORNERS ESTABLISHED CONTINUED

L-11 CENTERSOUTH SIXTEENTH CORNER IN SECTION 16, T-4-S, R-3-E
 ESTABLISHED CORNER POSITION ON LINE AND EQUIDISTANT BETWEEN
 QUARTER SECTION CORNER & CENTER QUARTER CORNER TO THE NORTH &
 SOUTH (SEE M-11 & K-11). THE POSITION OF THIS CORNER IS SUPPORTED BY
 VERY OLD AND DISTINCT CULTURAL FEATURES IN THE VICINITY. SET #5
 BY 30" PIN W/3/4" ALUMINUM DISK STAMPED TO DEPICT THE CORNER
 POSITION. ACCESSORIES ESTABLISHED:
 CARSONITE POST, NORTH, 0.5'
 FENCE CORNER POST W/SIGN, S57°W, 4.3', MAG NAIL 1' UP ON N SIDE
 HACKBERRY 14", N2°E, 8.5', MAG NAIL 1' UP ON E SIDE
 HACKBERRY 8" W/WIRE, S68°E, 4.3', MAG NAIL 1' UP ON N SIDE

M-6 WEST SIXTEENTH CORNER TO SECTIONS 17 & 20, T-4-S, R-3-E
 ESTABLISHED CORNER POSITION ON LINE AND EQUIDISTANT BETWEEN
 SECTION CORNER & QUARTER CORNER TO THE EAST & WEST (SEE M-5 & M-7).
 THE POSITION OF THIS CORNER IS SUPPORTED BY VERY OLD AND
 DISTINCT CULTURAL FEATURES IN THE VICINITY. SET #5 BY 30" PIN W/3/4"
 ALUMINUM DISK STAMPED TO DEPICT THE CORNER POSITION.
 ACCESSORIES ESTABLISHED:
 CARSONITE POST, WEST, 5'
 POPLAR 29" W/SIGN & WIRE, N18°W, 10.9', MAG NAIL 1' UP ON SW SIDE
 TWIN POPLAR 25", S29°W, MAG NAIL 1' UP ON W SIDE
 BEECH 15", S68°E, 36.1', MAG NAIL 1' UP ON W SIDE
 SPC-LS131, N0°25'E, 3.85'

M-10 WEST SIXTEENTH CORNER TO SECTIONS 16 & 21, T-4-S, R-3-E
 ESTABLISHED CORNER POSITION ON LINE AND AT PROPORTIONAL
 DISTANCE BETWEEN SECTION CORNERS RECOVERED TO THE EAST & WEST.
 (SEE M-9 & M-13). THE POSITION OF THIS CORNER IS SUPPORTED BY VERY
 OLD AND DISTINCT CULTURAL FEATURES IN THE VICINITY. SET #5 BY 30"
 PIN W/3/4" ALUMINUM DISK STAMPED TO DEPICT THE CORNER POSITION.
 THE MONUMENT IS 1' N OF THE NEP OF FAIRVIEW CHURCH ROAD.
 ACCESSORIES ESTABLISHED:
 CARSONITE POST, NORTH, 5'
 FENCE POST, N44°E, 10.1' (SLOPE), MAG NAIL 1' UP ON W SIDE
 TELEPHONE PEDESTAL, N14°W, 6.8'
 FENCE POST, N48°W, 22.6', MAG 1' UP ON SW SIDE
 FENCE POST W/SIGN, S2°E, 24.4', MAG NAIL 1' UP ON W SIDE

SURVEY FOR:
 THOMAS O. BUBE
 HARRISON COUNTY SURVEYOR
 300 N. CAPITOL AVENUE
 CORYDON, IN 47112

SURVEY BY:
 MCCAULEY & COMPANY, INC., P.S.C.
 PROFESSIONAL LAND SURVEYORS
 P.O. BOX 39
 ELIZABETH, IN 47117-0039
 812-969-2186
 E-mail mccauleypec@verizon.net

JOB 10809

LAND CORNER RECORD
(RECTANGULAR SURVEYS)

Point No. 461

Harrison Co. No. M-6

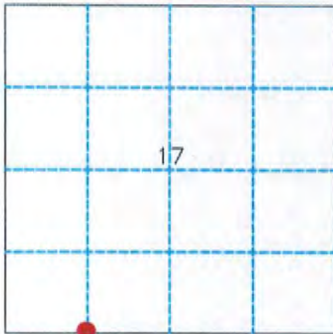
G-M

T 4 S R 3 E 2nd Mer. County Harrison State Indiana

W 1/16 Corner common to Sections 17 and 20

EXISTING SURVEYS

Original Government Survey	Original Evidence Found
Year surveyed <u>N/A</u> Original monument _____ <small>(wood post, stone, pile of stones, etc.)</small>	Year of search _____ By _____ Monument found _____
<p style="text-align: center;">Bearing Trees</p> Species _____ Diameter _____ Bearing _____ Distance _____	<p style="text-align: center;">Original Bearing Trees Found</p> Species _____ Diameter _____ Bearing _____ Distance _____
Subsequent Corner Restoration	Evidence of Subsequent Corner Restoration Found
Year surveyed _____ By _____ Where filed or recorded _____ Monument _____ <small>(Original, concrete post, iron rod, etc...)</small>	Year of search <u>2009</u> By <u>VHM</u> <u>Recovered #5 steel pin w/cap by Primavera (L.S. 0131)</u> <u>3.8' North of true corner position.</u>
<p style="text-align: center;">Bearing Trees, Reference Objects</p> Species _____ Diameter _____ Bearing _____ Distance _____	



Relation of Evidence to Record Features Along Section Lines

Section line to sections _____
 Object _____
 Record Distance _____
 Measured Distance _____

Other Evidence

Describe evidence of use and occupation such as roads, fences, clearings, timber cutting lines, plantations, etc... Cite source of testimony, if any. _____

Perpetuation Record

Monument and accessories established. Include brief description of area. Set #5 by 30" with 3/4" aluminum disk.

Poplar W/sign	Twin Poplar	Beech	Carsonite
29"	25"	15"	Post
N 18° W	S 29° E	S 68° E	West
10.9'	29.5'	36.1'	5.0'
MN + 1.0'	MN + 1.0'	MN + 1.0'	
SW. Side	W. Side	W. Side	

- At time of search:
1. Did you have the record description? Yes No _____
 2. How was search area located? _____
pacing, chaining, photo, maps, etc. SURVEYING
 3. Man hours spent in search N/A
 4. Do you think additional search might recover evidence? Yes _____
No
 5. Signature Vicki H. Mc

Certified corner restoration certificate prepared Yes _____ No

Filed in county records at _____ Date _____ County No. _____

Identified on aerial photo No. _____ Which is filed at _____

Point No. 461

Harrison Co. No. 6-M

T 4 S R 3 E 2nd Mer. County Harrison State Indiana

W 1/16 Corner common to Sections 17 and 20

EXISTING SURVEYS

Original Government Survey	Original Evidence Found
Year surveyed <u>N/A</u> Original monument _____ <small>(wood post, stone, pile of stones, etc.)</small> <hr/> <p style="text-align:center;">Bearing Trees</p> Species _____ Diameter _____ Bearing _____ Distance _____	Year of search _____ By _____ Monument found _____ <hr/> <p style="text-align:center;">Original Bearing Trees Found</p> Species _____ Diameter _____ Bearing _____ Distance _____
Subsequent Corner Restoration	Evidence of Subsequent Corner Restoration Found
Year surveyed _____ By _____ Where filed or recorded _____ Monument _____ <small>(Original, concrete post, iron rod, etc...)</small> <hr/> <p style="text-align:center;">Bearing Trees, Reference Objects</p> Species _____ Diameter _____ Bearing _____ Distance _____	Year of search <u>2009</u> By <u>VHM</u> <u>Recovered #5 steel pin w/cap by Primavera (L.S. 0131)</u> <u>3.8' North of true corner position.</u>



Relation of Evidence to Record Features Along Section Lines

Section line to sections _____
 Object _____
 Record Distance _____
 Measured Distance _____

Other Evidence

Describe evidence of use and occupation such as roads, fences, clearings, timber cutting lines, plantations, etc... Cite source of testimony, If any. _____

Perpetuation Record

Monument and accessories established. Include brief description of area. Set #5 by 30" with 3/4" aluminum disk.

Poplar W/sign	Twin Poplar	Beech	Carsonite
29"	25"	15"	Post
N 18° W	S 29° E	S 68° E	West
10.9'	29.5'	36.1'	5.0'
MN + 1.0'	MN + 1.0'	MN + 1.0'	
SW. Side	W. Side	W. Side	

At time of search:

1. Did you have the record description? Yes X No _____
2. How was search area located?
pacing, chaining, photo, maps, etc. SURVEYING
3. Man hours spent in search N/A
4. Do you think additional search might recover evidence? Yes _____
No X
5. Signature Vicki Hartman

Certified corner restoration certificate prepared Yes _____ No X
 Filed in county records at _____ Date _____ County No. _____
 Identified on aerial photo No. _____ Which is filed at _____

6-M

6/54

HARRISON COUNTY SURVEYOR CORNER MONUMENT RECOVERY & REFERENCE RECORD

WNHP: 4 RANGE: 3 SECTION: 17

CORNER REF. ID.: 6-M
DATE: / /

MONUMENT INFORMATION

LOCATION: W 1/4 CORNER CANTON TO SEC 17 + 20

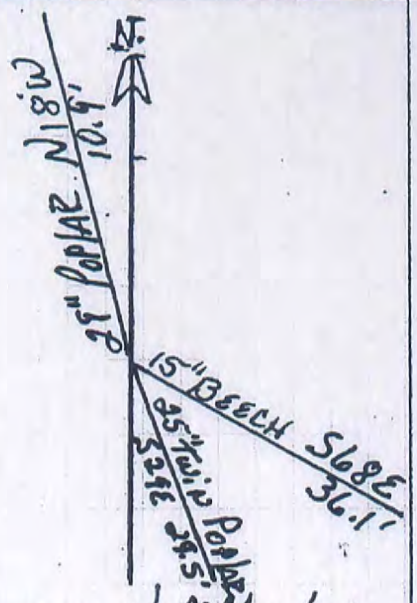
DESCRIPTION: #5 w/disk

ADDITIONAL DISTINGUISHING CHARACTERISTICS: CARSONITE POST WEST 5'

GN PLACED: 62 YES DATE: 5 / 1 / 09

WITNESS MARKERS

TYPE	SIGN	BLAZE	ADDITION DESCRIPTION
1. 29" POPLAR w/SIGN	(x)	()	N 18° W 10.9'
2. 25" TWIN POPLAR	()	()	S 29° E 29.5'
3. 15" BEECH	()	()	S 68° E 36.1'



	2	4	6	8	10	12	14	16	18	20	22	24
1	3	5	7	9	11	13	15	17	19	21	23	25
2	4	6	8	10	12	14	16	18	20	22	24	26
3	5	7	9	11	13	15	17	19	21	23	25	27
4	6	8	10	12	14	16	18	20	22	24	26	28
5	7	9	11	13	15	17	19	21	23	25	27	29
6	8	10	12	14	16	18	20	22	24	26	28	30
7	9	11	13	15	17	19	21	23	25	27	29	31
8	10	12	14	16	18	20	22	24	26	28	30	32
9	11	13	15	17	19	21	23	25	27	29	31	33
10	12	14	16	18	20	22	24	26	28	30	32	34
11	13	15	17	19	21	23	25	27	29	31	33	35
12	14	16	18	20	22	24	26	28	30	32	34	36
13	15	17	19	21	23	25	27	29	31	33	35	37
14	16	18	20	22	24	26	28	30	32	34	36	38
15	17	19	21	23	25	27	29	31	33	35	37	39
16	18	20	22	24	26	28	30	32	34	36	38	40
17	19	21	23	25	27	29	31	33	35	37	39	41
18	20	22	24	26	28	30	32	34	36	38	40	42
19	21	23	25	27	29	31	33	35	37	39	41	43
20	22	24	26	28	30	32	34	36	38	40	42	44
21	23	25	27	29	31	33	35	37	39	41	43	45
22	24	26	28	30	32	34	36	38	40	42	44	46
23	25	27	29	31	33	35	37	39	41	43	45	47
24	26	28	30	32	34	36	38	40	42	44	46	48
25	27	29	31	33	35	37	39	41	43	45	47	49
26	28	30	32	34	36	38	40	42	44	46	48	50
27	29	31	33	35	37	39	41	43	45	47	49	51
28	30	32	34	36	38	40	42	44	46	48	50	52
29	31	33	35	37	39	41	43	45	47	49	51	53
30	32	34	36	38	40	42	44	46	48	50	52	54
31	33	35	37	39	41	43	45	47	49	51	53	55
32	34	36	38	40	42	44	46	48	50	52	54	56
33	35	37	39	41	43	45	47	49	51	53	55	57
34	36	38	40	42	44	46	48	50	52	54	56	58
35	37	39	41	43	45	47	49	51	53	55	57	59
36	38	40	42	44	46	48	50	52	54	56	58	60

RECOVERED BY: J. McLawley

DATE: 5 / 1 / 09
DATE: / /
DATE: / /

REFERENCED BY: TDB

DATE: 8 / 3 / 09
DATE: / /
DATE: / /

RECORDED IN PERPETUATION RECORDS BOOK:

DATE: 8 / 6 / 09

HARRISON

COUNTY

6-M

CORNER 6-M TOWNSHIP 4 S RANGE 3 E EAST 2ND PRINCIPAL MERIDIAN

LOCATION	DESCRIPTION OF		DISTANCE FROM CORNER	BEARING FROM CORNER	DATE CHECKED	CHECKED BY	FIELD BOOK	REMARKS
	MONUMENT	REFERENCE						
W 1/16 Corn. Common to 17-20	#5 w/disk	29" Poplar w/sign	10.9'	N 18 W	5/09	TOB	6/S4	Carsonite Post 5.0'W
		25" Twin Poplar	29.5'	S 29 E				
		15" Beech	36.1'	S 68 E				

6-M

HARRISON COUNTY SURVEYOR 6/54
CORNER MONUMENT RECOVERY & REFERENCE RECORD

WNSEF: 4 RANGE: 3 SECTION: 17

CORNER REF. LD: 6-M
DATE: / /

MONUMENT INFORMATION

LOCATION: W 1/6 CORNER COMMENTS Sec 17 + 20

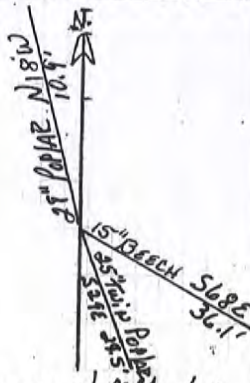
DESCRIPTION: #5 w/disk

ADDITIONAL DISTINGUISHING CHARACTERISTICS:
CARSONITE POST WEST 5'

GN PLACED: 62 YES DATE: 5/1/09

WITNESS MARKERS

TYPE	SIGN	BLAZE	ADDITION DESCRIPTION
1 29" POPLAR w/SIGN	(x)	()	N 18° W 10.9'
2 25" TWIN POPLAR	()	()	S 29° E 29.5'
3 15" BEECH	()	()	S 68° E 36.1'



	1	2	3	4	5	6	7	8	9	10	11	12	13	14	15	16	17	18	19	20	21	22	23	24
A																								
B																								
C																								
D																								
E																								
F																								
G																								
H																								
I																								
J																								
K																								
L																								
M																								
N																								
O																								
P																								
Q																								
R																								
S																								
T																								
U																								
V																								
W																								
X																								
Y																								
Z																								

RECOVERED BY: J. M. Lowrey

DATE: 5/1/09
DATE: / /
DATE: / /

REFERENCED BY: TDB

DATE: 8/3/09
DATE: / /
DATE: / /

RECORDED IN PERPETUATION RECORDS BOOK:

DATE: 8/6/09

CORNER RECORD
HARRISON COUNTY

4-C

CORNER 7-C TOWNSHIP 4 SOUTH RANGE 3 EAST 2 ND PRINCIPAL MERIDIAN

LOCATION	DESCRIPTION OF MONUMENT		DISTANCE FROM CORNER	BEARING FROM CORNER	DATE CHECKED	CHECKED BY	FIELD BOOK	REMARKS
	MONUMENT	REFERENCE						
S.W. Corner N.E. 1/4 Section 5	Stone	12" Oak	36.2	N47-46-0E	5-8-82	T.B.	#2 Pg.3	Sign Placed
		14" Hickory	25.0	S80-55-0E	5-8-82	T.B.		Sign Placed
		8" Maple	28.17	N5-57-10W	5-8-82	T.B.		Sign Placed