

I-17

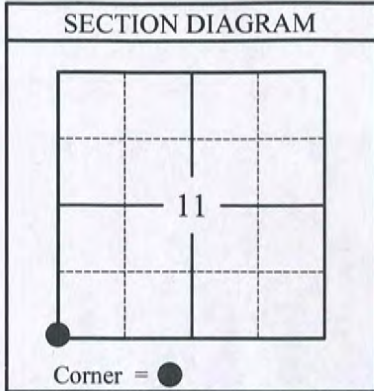
HARRISON COUNTY CORNER PERPETUATION RECORD

Section 11, Township 3 South, Range 3 East

Corner Name: Southwest Corner Index: J-17

Monument Type: .50'x.60' Sandstone Above/Below Grade: Flush

Coordinate: Northing 1107935.18 Easting 186109.00 Datum:NAD38 IN EAST, US Survey Feet



PERPETUATION RECORD:

Southwest Corner of Section 11, Township 3 South, Range 3 East: A 0.50'x0.60' stone was found flush between two cedar post. Witness signs were found at the site of the monument but no reference information was found.

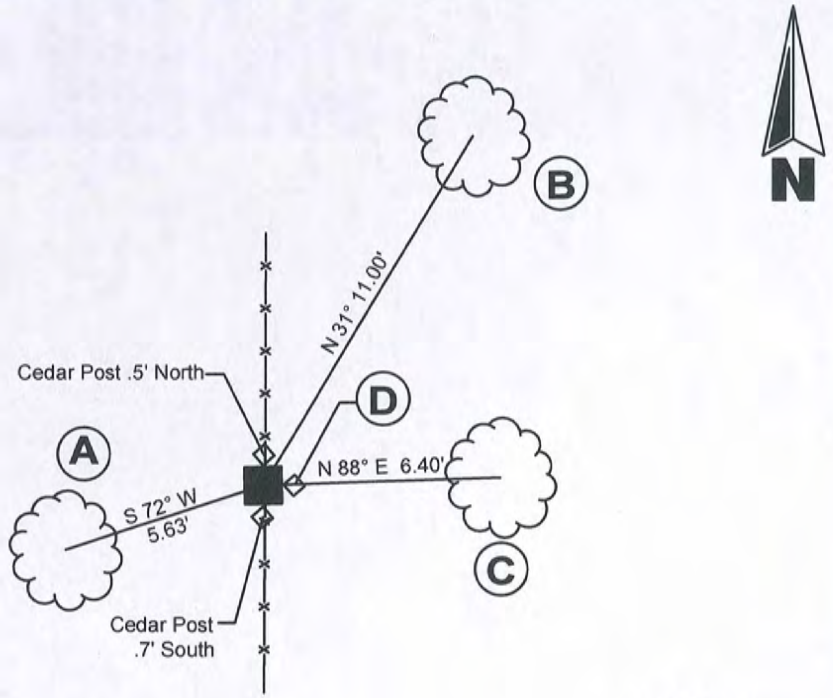
VICINITY REFERENCE:

The monument falls between two cedar posts in a north to south running fence, fence remains as well as a tree line can be found running east from the monument. The stone is +/-30' east of a agricultural field.

CORNER REFERENCE

- A.) 9" Red Oak with a Harrison County Witness sign and mag nail (north face.)
- B.) 12" Honey Locust with Harrison County witness sign and a mag nail.(east face.)
- C.) 7" Pignut Hickory with Harrison County Witness sign and mag nail (south face.)
- D.) U-post with Harrison County Survey Marker sign is 1' East.

NOTE: The bearings to the Corner References were made with a magnetic compass to the center of the referenced object. The distances are horizontal measurements to a mag nail placed perpendicular to the line of measurement, unless noted otherwise.



1800 West Main Street, Paoli, Indiana 47454
 Phone: 812-723-2900 Email: mcooper@brjcivil.com
 BRCJ Project No. 3-1550

Surveyor:

Matthew L. Cooper

Matthew L. Cooper
 Indiana Professional Survey No. PS20200079
 Date: June 22, 2022

County Surveyor: Harold Klinstiver



HARRISON COUNTY CORNER PERPETUATION RECORD

Section 11, Township 3 South, Range 3 East

Corner Name: Southwest Corner Index: J-17

Monument Type: .50'x.60' Sandstone Above/Below Grade: Flush

Coordinate: Northing 1107935.18 Easting 186109.00 Datum:NAD38 IN EAST, US Survey Feet

CORNER REFERENCE IMAGES



MONUMENT

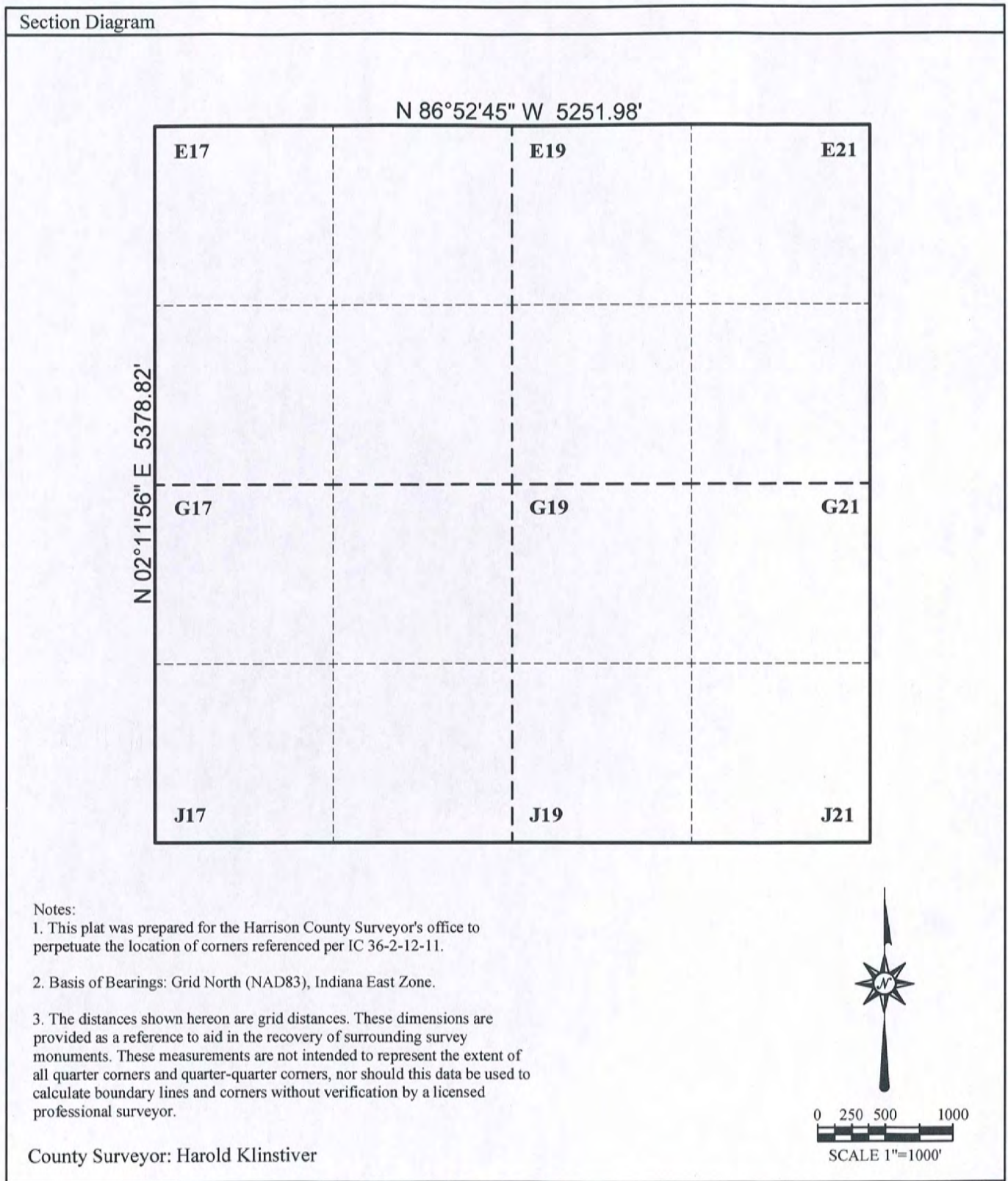


Photo looking EAST

I-17

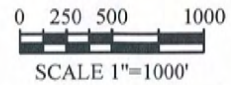
HARRISON COUNTY CORNER PERPETUATION RECORD SECTION DIAGRAM

Section 11 Township 3 South Range 3 East



Notes:

1. This plat was prepared for the Harrison County Surveyor's office to perpetuate the location of corners referenced per IC 36-2-12-11.
2. Basis of Bearings: Grid North (NAD83), Indiana East Zone.
3. The distances shown hereon are grid distances. These dimensions are provided as a reference to aid in the recovery of surrounding survey monuments. These measurements are not intended to represent the extent of all quarter corners and quarter-quarter corners, nor should this data be used to calculate boundary lines and corners without verification by a licensed professional surveyor.



County Surveyor: Harold Klinstiver

LAND CORNER RECORD
(RECTANGULAR SURVEYS)

Harrison County Surveyor's Reference Index Number: 17-M

T 3 S R 3 E 2nd Mer., County Harrison State Indiana

Section Corner common to Sections 15 and 14

EXISTING SURVEYS	
Picture/Sketch	Picture/Sketch
No Original Government Survey Evidence Recovered	Evidence of Subsequent Corner Restoration Found
	Year of search <u>2018</u> By <u>WPM</u> _____ _____ _____
<div style="border: 1px solid black; padding: 10px; width: fit-content; margin: auto;"> SE CORNER OF SECTION 15 </div>	Existing Section Corner Notes References for: SE Sec. Corner 15 Monument and accessories established. Include brief description of area. <u>PK nail found in Quarry Rd. 0.3 ft deep</u> <u>Ref #1= Mag nail S side 26 in ash stump 1 ft up</u> <u>N 40 W, 31.7 ft</u> <u>Ref #2= 3x5 in metal black mailbox post mes. SW corner</u> <u>N 2 E, 10.95 ft</u> <u>Ref #3= Mag nail in SW side pwp</u> <u>S 80 E, 71.8 ft</u> ISPCS-EZ-U.S. Survey Feet N: 1092336.85 E: 185506.72
Signature: <u>William WPM</u> Date: <u>10/5/18</u>	

HARRISON

COUNTY

COPNER 17-0

TOWNSHIP 3

RANGE 3

EAST

2ND

PRINCIPAL MERIDIAN

14-0

LOCATION	DESCRIPTION OF		DISTANCE FROM CORNER	BEARING FROM CORNER	DATE CHECKED	CHECKED BY	FIELD BOOK	REMARKS
	MONUMENT	REFERENCE						
N.E. Corner SE $\frac{1}{4}$, Section 22	Stone marked with metal post	80 \emptyset Sassafras	16.39	S77-04-40E	10-25-89	T.B.	#4 Pg.8	Sign Placed
		1.20' Sass.	11.49	S16-50-40W	10-25-89	T.B.		Sign Placed
		nail North side	2.93	S81-33-0W	10-25-89	T.B.		Sign Placed

17-0

DIETZ # NO. 385-3

Stone is 0.25 out of ground Party Chief T. Brown
 + comes to a point. Stone is Head Chain R. Crane
 marked with a metal post + Rear Chain A. Clements
 sign
 10-25-89

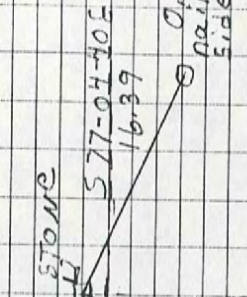
581-33-04W 2.93
 nail is on north +
 side + 1.60' → F.C. ↓ STONE

516-50-40W 11.49
 1.20' SASSAFRAS
 nail is on north side +
 1.75' up.
 N.E. Corner, S.E. 1/4
 Section 22, T35, R3E

0.80' SASSAFRAS
 nail is on south
 side 1.80' up

517-04-40E
 16.39

Alluminum nails were used
 in the tree + fence corner. Both
 tree + fence corner have a
 witness sign.



HARRISON COUNTY

CORNER 17-S TOWNSHIP 3 SOUTH RANGE 3 EAST 2 ND PRINCIPAL MERIDIAN

17-S

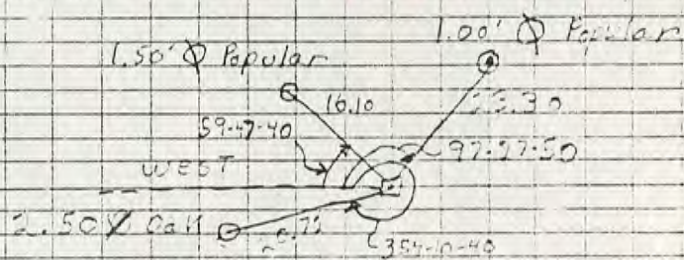
LOCATION	DESCRIPTION OF		DISTANCE FROM CORNER	BEARING FROM CORNER	DATE CHECKED	CHECKED BY	FIELD BOOK	REMARKS
	MONUMENT	REFERENCE						
S.E. Corner N.E. 1/4 Section 27	Stone	12" Popular	23.30	N.17-27-50E.	12-23-81	T.B.	#1 Pg.65	Sign Placed
		30" Oak	20.72	S.84-40-40W.	12-23-81	T.B.		Sign Placed
		18" Popular	16.10	N.30-12-20W	12-23-81	T.B.		Sign Placed

M-S

Date 12-23-91

Party Clay T. E.

Wood County, Wis.



SE Corn NE 1/4 Sect 27

T35-R3E

Stone is .60x.40x.30 out of ground, Stone is marked with a metal post + sign .00' E. All trees have a blaze to show rail 16" above ground. All trees have a witness sign.

HARRISON

COUNTY

RANGE 3 EAST 2 ND PRINCIPAL MERIDIAN

TOWNSHIP 3 SOUTH

CORNER 18-T

18-T

LOCATION	DESCRIPTION OF		DISTANCE FROM CORNER	BEARING FROM CORNER	DATE CHECKED	CHECKED BY	FIELD BOOK	REMARKS
	MONUMENT	REFERENCE						
S.W. Corner N.E. $\frac{1}{4}$, S.W. $\frac{1}{4}$ Section 26	Stone		22.1	S. 1.15	6-4-84	T.B.	#2 Pg. 56	Sign Placed
			17.05	West	6-4-84	T.B.		Sign Placed

187

T-18

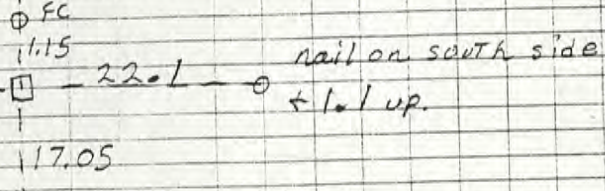
DIETZGEN NO 305-2

Party Chief T. Brown
Head Chain A. Clements
Gear Chain E. Fetz
Date 6-7-84

All Post have a witness
Sign & a red ring painted
around them

↑ NORTH

Nail on South side + 0.7 up.



Stone is .50x.80x1.00
out of ground. Stone is
marked with metal post
& sign. Stone has X in Top.

SW. Cor. NE 1/4, SW 1/4
Sect. 26 T35, R3E

HARRISON

COUNTY

18-W

MERIDIAN

RANGE 2 ND EAST

TOWNSHIP 3 SOUTH

CORNER

18-W

LOCATION	DESCRIPTION OF		DISTANCE FROM CORNER	BEARING FROM CORNER	DATE CHECKED	CHECKED BY	FIELD BOOK	REMARKS
	MONUMENT	REFERENCE						
N.E. Corner N.W. S.W. Section 35	Stone	22" Ash	9.70	N36-40-0E	2-17-86	T.B.	#3 Pg35	Sign Placed
	Axe	18" Elm	13.70	S39-40-0W	2-17-86	T.B.		Sign Placed
		11" Walnut	13.60	S75-40-0W	2-17-86	TB		Sign Placed

All Trees have a blaze
with a aluminum nail in
middle. All Trees have a
witness sign.

Party Chief. T. Brown
Head Chain A. Clements
Rear Chain M. Riley

Stone is .30x.70x1.00' out
of ground. Stone is marked
with a metal post + sign.

1.30' \varnothing ash, nail is on east side
+ 1.20' up.

N36-40-0E = 9.70

18-W

S75-40-0W = 13.60

DATE 2-17-86

.90' \varnothing Walnut, nail is
on north side +
1.60' up.

S39-40-0W = 13.70'

NE corner NW 1/4, SW 1/4

Section 35

1.50' \varnothing Elm, nail is on east
side + 1.40' up.

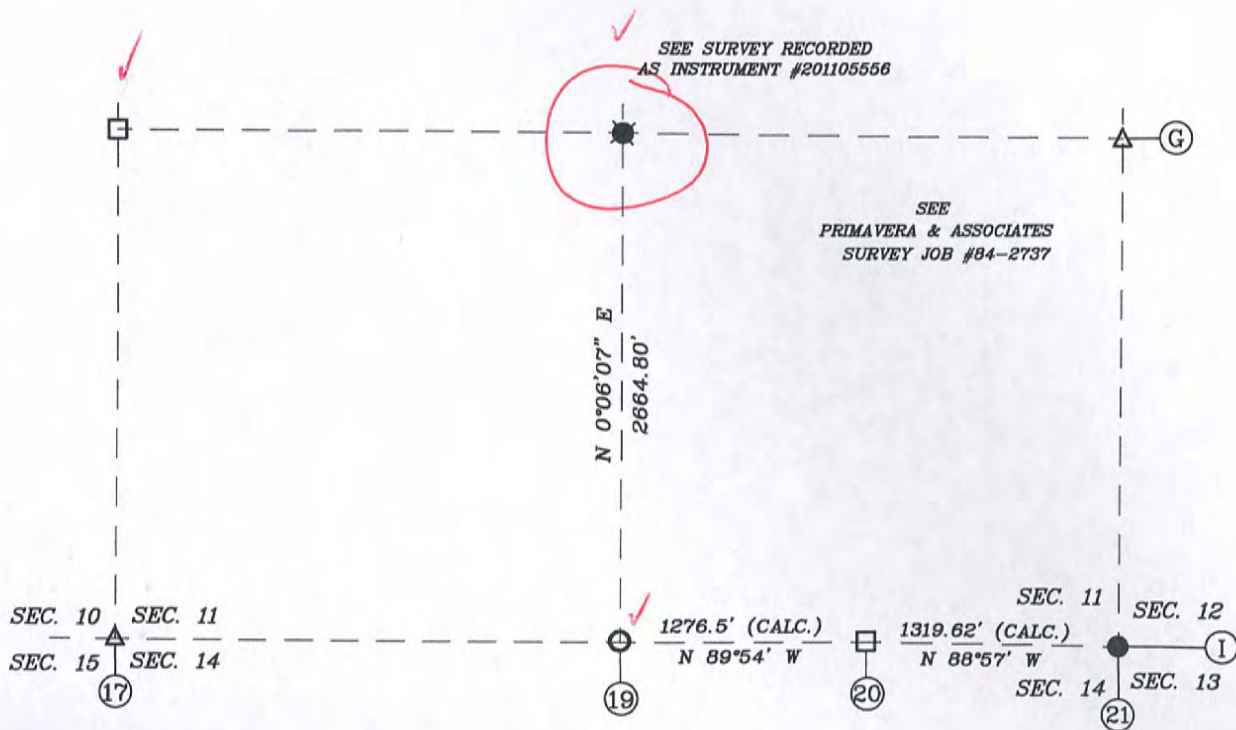
T 35, R 3E

18-W
PAGE 35

19-G

SECTION 11,
TOWNSHIP 3 SOUTH, RANGE 4 EAST,
FRANKLIN TOWNSHIP,
HARRISON COUNTY, INDIANA

FOR RECORDING INFORMATION



SURVEYOR'S CERTIFICATE

I, VICTOR H. McCAULEY, PROFESSIONAL LAND SURVEYOR, REGISTERED BY THE LAWS OF THE STATE OF INDIANA, HEREBY DECLARE THAT I HAVE RECOVERED, RESTORED AND PERPETUATED THE CORNERS SHOWN HEREON IN SECTION 11, TOWNSHIP 3 SOUTH, RANGE 4 EAST, FRANKLIN TOWNSHIP, HARRISON COUNTY, INDIANA IN ACCORDANCE WITH IAC TITLE 865, THE RULES FOR SURVEYS OF PUBLIC LANDS AND THE STATUTES OF THE STATE OF INDIANA, ALL TO THE BEST OF MY KNOWLEDGE AND BELIEF.

V. H. M.
VICTOR H. McCAULEY, INDIANA LS# S0336
DATE OF SURVEY: DEC. 14, 2012
LAST DATE OF FIELD WORK: DEC. 13, 2012

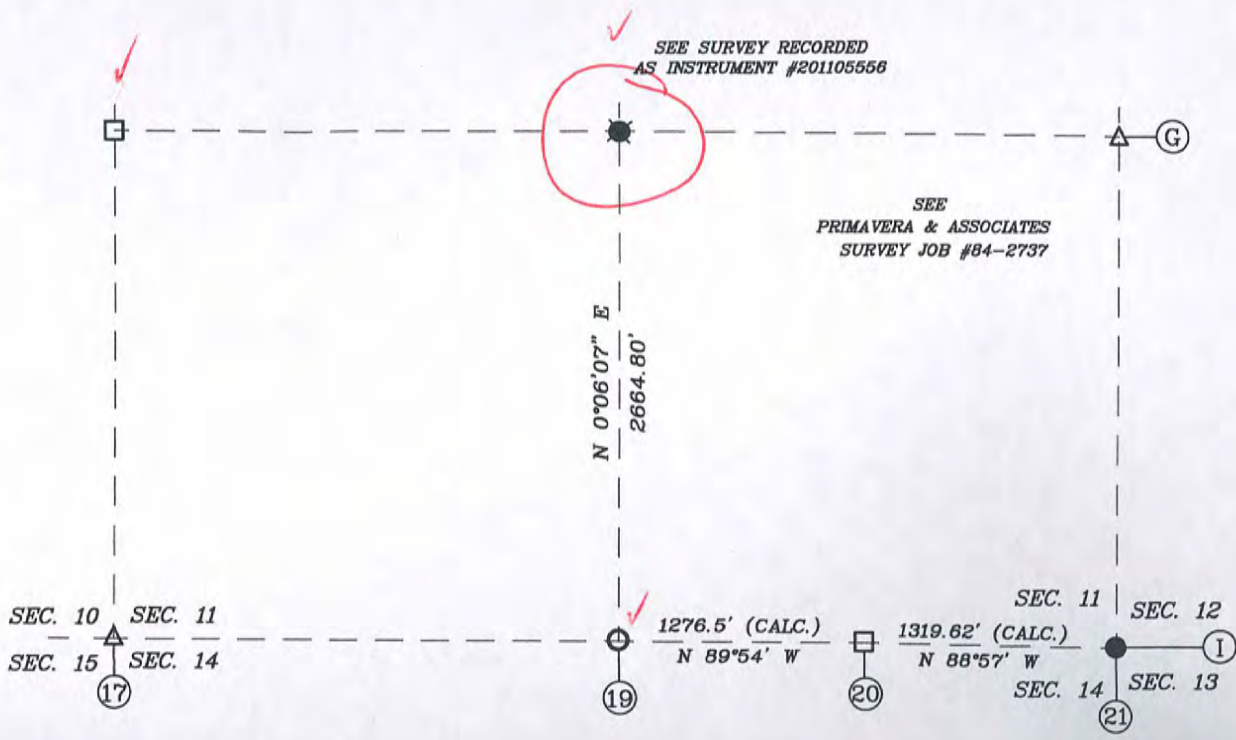


LEGEND

- HISTORICAL STONE (SEE LAND CORNER RECORD)
- EXISTING PIPE (SEE LAND CORNER RECORD)
- STEEL PIN W/3/4" ALUM. DISC STAMPED TO DEPICT CORNER POSITION (SEE LAND CORNER RECORD)
- EXISTING STEEL PIN (SEE LAND CORNER RECORD)
- △ EXISTING MAG READING
- Ⓝ HARRISON COUNTY REFERENCE INDEX NUMBER

NORTH

SURVEYOR'S REPORT-THERE ARE NO CHANGES FROM THE MATTERS RECORDED IN INSTRUMENT NUMBER 201105556 OF THE HARRISON COUNTY, INDIANA RECORDS.



SURVEYOR'S CERTIFICATE

I, VICTOR H. McCAULEY, PROFESSIONAL LAND SURVEYOR, REGISTERED BY THE LAWS OF THE STATE OF INDIANA, HEREBY DECLARE THAT I HAVE RECOVERED, RESTORED AND PERPETUATED THE CORNERS SHOWN HEREON IN SECTION 11, TOWNSHIP 3 SOUTH, RANGE 4 EAST, FRANKLIN TOWNSHIP, HARRISON COUNTY, INDIANA IN ACCORDANCE WITH IAC TITLE 865, THE RULES FOR SURVEYS OF PUBLIC LANDS AND THE STATUTES OF THE STATE OF INDIANA, ALL TO THE BEST OF MY KNOWLEDGE AND BELIEF.

Victor H. McCauley
VICTOR H. McCAULEY, INDIANA LS# S0336

DATE OF SURVEY: DEC. 14, 2012

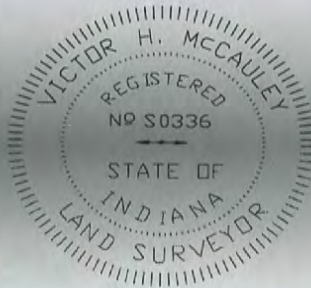
LAST DATE OF FIELD WORK: DEC. 13, 2012

DECLARATION

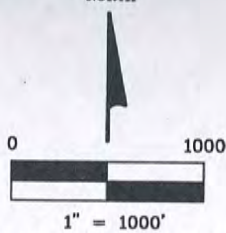
I, affirm under the penalties of perjury, that I have taken responsible care to redact, each Social Security number in this document, unless required by law.

DECLARANT
Victor H. McCauley
Signature of Declarant

VICTOR H. McCAULEY
Printed Name of Declarant



NORTH



GRID NORTH PER INDIANA STATE PLANE COORDINATE SYSTEM, EAST ZONE, 1983 (2012) DATUM, PER G.P.S. OBSERVATION.

LEGEND

- HISTORICAL STONE (SEE LAND CORNER RECORD)
- EXISTING PIPE (SEE LAND CORNER RECORD)
- STEEL PIN W/3/4" ALUM. DISC STAMPED TO DEPICT CORNER POSITION (SEE LAND CORNER RECORD)
- EXISTING STEEL PIN (SEE LAND CORNER RECORD)
- △ EXISTING MAG READING
- Ⓝ HARRISON COUNTY REFERENCE INDEX NUMBER

SURVEYOR'S REPORT—THERE ARE NO CHANGES FROM THE MATTERS RECORDED IN INSTRUMENT NUMBER 201105556 OF THE HARRISON COUNTY, INDIANA RECORDS.

THIS SURVEY IS BASED ON THE INDIANA STATE PLANE COORDINATE SYSTEM, EAST ZONE, 1983 (2012) ADJUSTMENT U.S. SURVEY FOOT, THE DISTANCES SHOWN ARE SEA GRID DISTANCES. BASED ON COMBINED SALE FACTOR OF 0.99994537. TO CONVERT THE SURVEY DISTANCES TO HORIZONTAL GROUND LEVEL DISTANCES DIVIDES THE SURVEY DISTANCES BY THE SCALE FACTOR.

FOR A MORE COMPLETE DESCRIPTION OF EACH CORNER, SEE THE LAND CORNER RECORD CARD ON FILE WITH THE HARRISON COUNTY SURVEYOR.



MCCAULEY & COMPANY, INC., P.S.C.
PROFESSIONAL LAND SURVEYORS
P.O. BOX 39
ELIZABETH, IN 47117-0039
TELEPHONE: 812-969-2186
mccauleypsc@frontier.com

FOR: HARRISON COUNTY SURVEYOR
HAROLD KLINSTIVER
245 ATWOOD STREET, SUITE 219
CORYDON, IN 47112

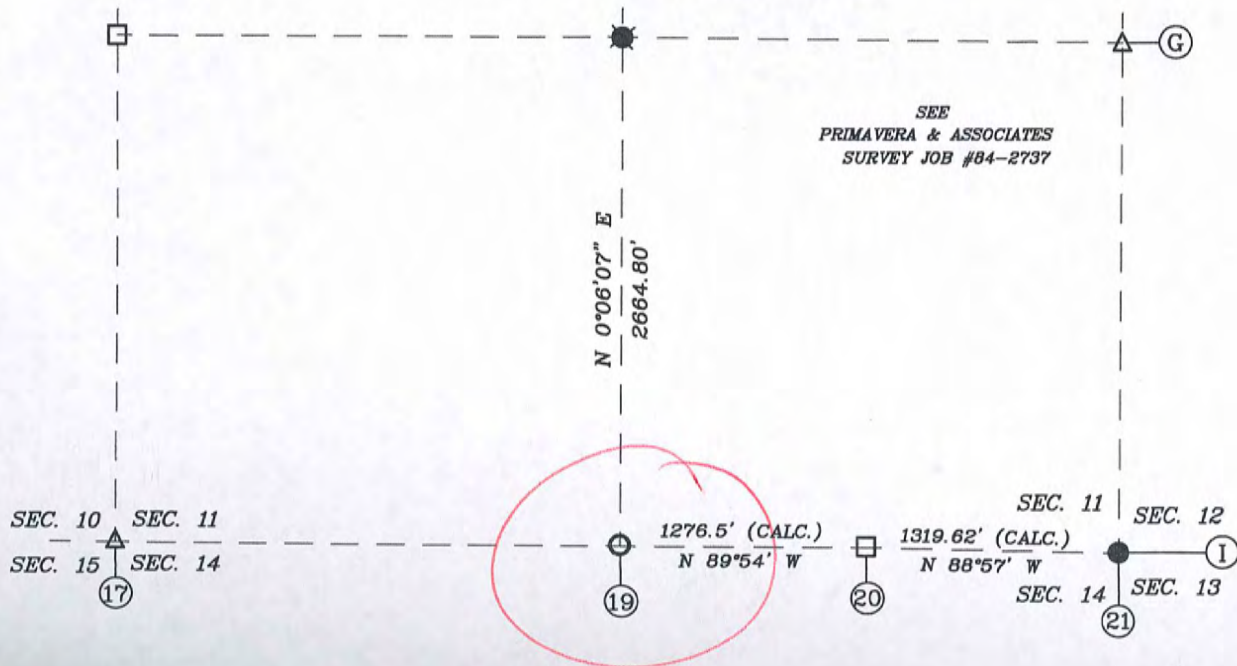
19-I

SECTION 11,
TOWNSHIP 3 SOUTH, RANGE 4 EAST,
FRANKLIN TOWNSHIP,
HARRISON COUNTY, INDIANA

FOR RECORDING INFORMATION

SEE SURVEY RECORDED
AS INSTRUMENT #201105556

SEE
PRIMAVERA & ASSOCIATES
SURVEY JOB #84-2737



SURVEYOR'S CERTIFICATE

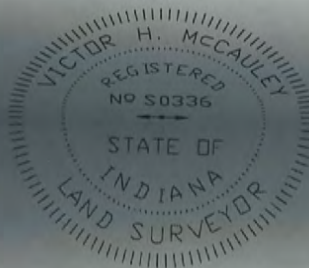
I, VICTOR H. McCAULEY, PROFESSIONAL LAND SURVEYOR, REGISTERED BY THE LAWS OF THE STATE OF INDIANA, HEREBY DECLARE THAT I HAVE RECOVERED, RESTORED AND PERPETUATED THE CORNERS SHOWN HEREON IN SECTION 11, TOWNSHIP 3 SOUTH, RANGE 4 EAST, FRANKLIN TOWNSHIP, HARRISON COUNTY, INDIANA IN ACCORDANCE WITH IAC TITLE 865, THE RULES FOR SURVEYS OF PUBLIC LANDS AND THE STATUTES OF THE STATE OF INDIANA, ALL TO THE BEST OF MY KNOWLEDGE AND BELIEF.

V. H. M.

VICTOR H. McCAULEY, INDIANA LS# S0336

DATE OF SURVEY: DEC. 14, 2012

LAST DATE OF FIELD WORK: DEC. 13, 2012



LEGEND

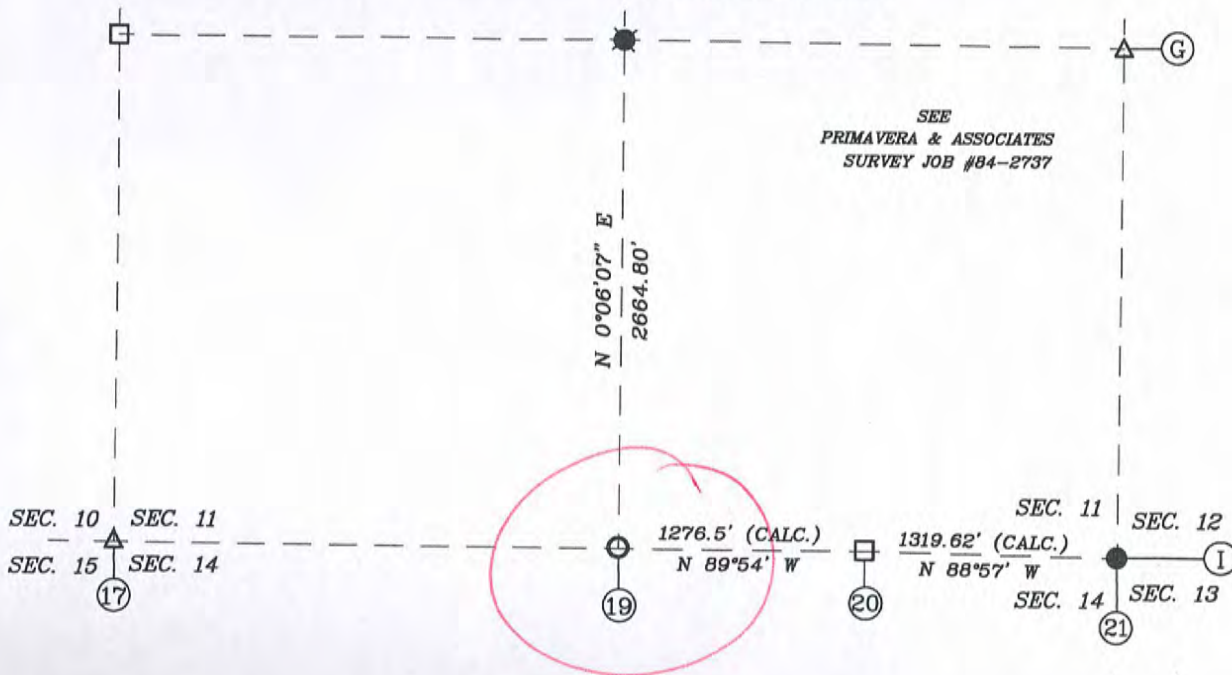
- HISTORICAL STONE (SEE LAND CORNER RECORD)
- EXISTING PIPE (SEE LAND CORNER RECORD)
- STEEL PIN W/3/4" ALUM. DISC STAMPED TO DEPICT CORNER POSITION (SEE LAND CORNER RECORD)
- EXISTING STEEL PIN (SEE LAND CORNER RECORD)
- △ EXISTING MAG READING
- Ⓝ HARRISON COUNTY REFERENCE INDEX NUMBER

NORTH

SURVEYOR'S REPORT-THERE ARE NO CHANGES FROM THE MATTERS RECORDED IN INSTRUMENT NUMBER 201105556 OF THE HARRISON COUNTY, INDIANA RECORDS.

SEE SURVEY RECORDED
AS INSTRUMENT #201105556

SEE
PRIMAVERA & ASSOCIATES
SURVEY JOB #84-2737



SURVEYOR'S CERTIFICATE

I, VICTOR H. McCAULEY, PROFESSIONAL LAND SURVEYOR, REGISTERED BY THE LAWS OF THE STATE OF INDIANA, HEREBY DECLARE THAT I HAVE RECOVERED, RESTORED AND PERPETUATED THE CORNERS SHOWN HEREON IN SECTION 11, TOWNSHIP 3 SOUTH, RANGE 4 EAST, FRANKLIN TOWNSHIP, HARRISON COUNTY, INDIANA IN ACCORDANCE WITH IAC TITLE 865, THE RULES FOR SURVEYS OF PUBLIC LANDS AND THE STATUTES OF THE STATE OF INDIANA, ALL TO THE BEST OF MY KNOWLEDGE AND BELIEF.

Victor H. McCauley
VICTOR H. McCAULEY, INDIANA LS# S0336

DATE OF SURVEY: DEC. 14, 2012

LAST DATE OF FIELD WORK: DEC. 13, 2012

LEGEND

- HISTORICAL STONE (SEE LAND CORNER RECORD)
- EXISTING PIPE (SEE LAND CORNER RECORD)
- STEEL PIN W/3/4" ALUM. DISC STAMPED TO DEPICT CORNER POSITION (SEE LAND CORNER RECORD)
- EXISTING STEEL PIN (SEE LAND CORNER RECORD)
- △ EXISTING MAG READING
- (N) HARRISON COUNTY REFERENCE INDEX NUMBER



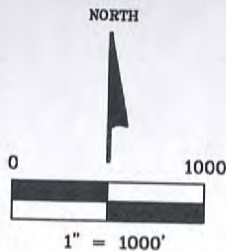
SURVEYOR'S REPORT—THERE ARE NO CHANGES FROM THE MATTERS RECORDED IN INSTRUMENT NUMBER 201105556 OF THE HARRISON COUNTY, INDIANA RECORDS.

DECLARATION

I, affirm under the penalties of perjury, that I have taken responsible care to redact, each Social Security number in this document, unless required by law.

DECLARANT
Victor H. McCauley
Signature of Declarant

VICTOR H. McCAULEY
Printed Name of Declarant



GRID NORTH PER INDIANA STATE PLANE COORDINATE SYSTEM, EAST ZONE, 1983 (2012) DATUM, PER G.P.S. OBSERVATION.

THIS SURVEY IS BASED ON THE INDIANA STATE PLANE COORDINATE SYSTEM, EAST ZONE, 1983 (2012) ADJUSTMENT U.S. SURVEY FOOT, THE DISTANCES SHOWN ARE SEA GRID DISTANCES. BASED ON COMBINED SALE FACTOR OF 0.99994537. TO CONVERT THE SURVEY DISTANCES TO HORIZONTAL GROUND LEVEL DISTANCES DIVIDES THE SURVEY DISTANCES BY THE SCALE FACTOR.

FOR A MORE COMPLETE DESCRIPTION OF EACH CORNER, SEE THE LAND CORNER RECORD CARD ON FILE WITH THE HARRISON COUNTY SURVEYOR.



MCCAULEY & COMPANY, INC., P.S.C.
PROFESSIONAL LAND SURVEYORS
P.O. BOX 39
ELIZABETH, IN 47117-0039
TELEPHONE: 812-969-2186
mccauleypsc@frontier.com

FOR: HARRISON COUNTY SURVEYOR
HAROLD KLINSTIVER
245 ATWOOD STREET, SUITE 219
CORYDON, IN 47112

CORNER RECORD
HARRISON COUNTY

19-4

CORNER 19-H TOWNSHIP 3 SOUTH RANGE 3 EAST 2 ND PRINCIPAL MERIDIAN

LOCATION	DESCRIPTION OF		DISTANCE FROM CORNER	BEARING FROM CORNER	DATE CHECKED	CHECKED BY	FIELD BOOK	REMARKS
	MONUMENT	REFERENCE						
S.W. Corner of NW 1/4 OF SE 1/4 Section 11	Stone	6" Dogwood	2.35'	S26-19W	5-29-81	T.B.	#1 Pg. 22	Sign Placed
		18" Oak	25.43	S54-25E	5-29-81	TB.		Sign Placed
		14" Ash	17.35	N72-31W	5-29-81	T.B.		Sign Placed

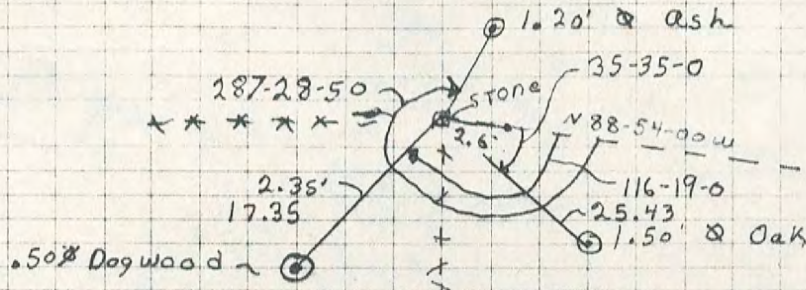
19-H

19-H

DIETZGEN NO. 385-3

Date 5-29-21
Party Chief T. Brown
Head Chain C. Mathes
Rear Chain M. Mosses

S.W. Cor. NW 1/4, SE 1/4, Sect. 11
T 35, R 3E



All trees have blaze marks with alumin. nails in middle of blaze.
All trees have witness signs. Stone is .85' x .75' x 1.30' out of ground.
Stone has X in Top (middle). Stone has a metal post with sign on south side

DIETZGEN NO. 385-3

[REDACTED]

LOCATION	DESCRIPTION OF MONUMENT		DISTANCE FROM CORNER	BEARING FROM CORNER	DATE CHECKED	CHECKED BY	FIELD BOOK	REMARKS
	MONUMENT	REFERENCE						
S.W. Cor. S.E. 1/4, S.E. 1/4 Sec. 23	#6 REbar	21" Cedar	36.00	North	4-7-83	T.B.	#2 Pg. 27	Sign Placed
		27" White Oak	39.40	South	4-7-83	T.B.		Sign Placed
		14" Hickory	27.20	N59-44W	4-7-83	T.B.		Sign Placed

Date 4-7-83

Party Chief T. Brown

20-Q

Head Chain M. Mosses

Rear Chain A. Clements

① 1.8" x Cedar, nail on west side
+ 1.6' off ground1.20' x hickory nail on north
Side + 0.95' off groundNorth
36.00'② NS 9.44 NW
27.20'③ 6 Rebar, flush with ground
placed metal post + sign on
the east sideAll trees have a blaze
with a aluminum nail in
middle. All trees have a
witness + a red ring
painted around it.South
39.40'

S.W. Cor., SE 1/4, SE 1/4

Sect 23, T3S, R3E.

④ 2.3" x white Oak nail on east
Side + 1.5' off ground

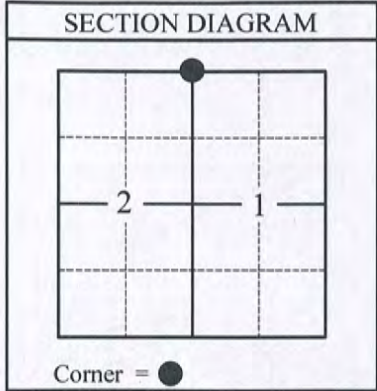
HARRISON COUNTY CORNER PERPETUATION RECORD

Section 2 , Township 3 South, Range 3 East

Corner Name: Northeast Corner Index: A-21

Monument Type: 5/8" Rebar Above/Below Grade: 0.10' Above Grade

Coordinate: Northing 1107727.46 Easting 191364.51 Datum: NAD83 IN EAST, US Survey Feet



PERPETUATION RECORD:

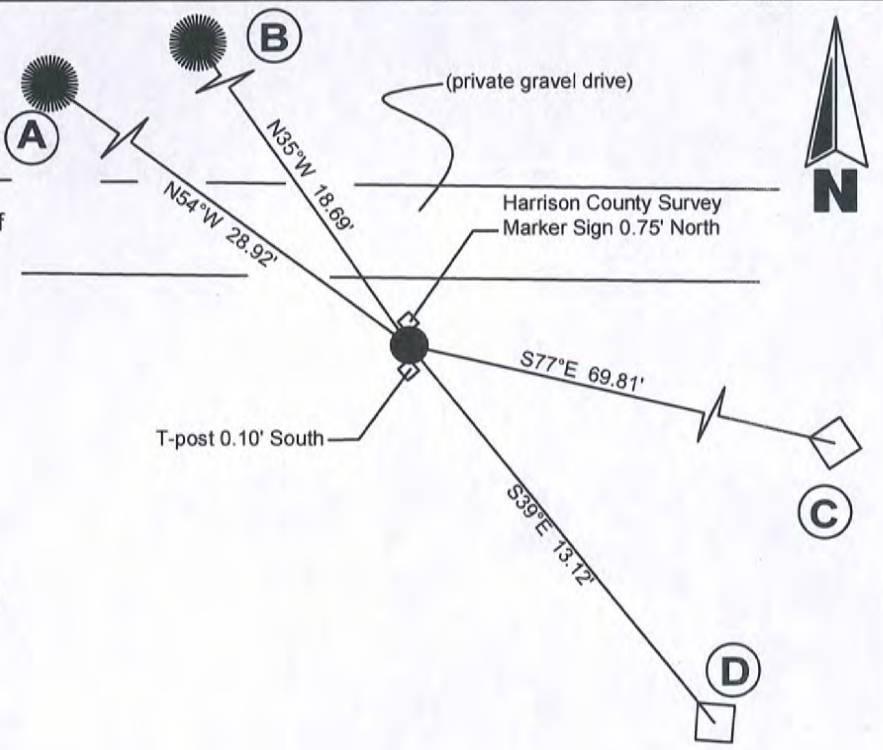
Northeast Corner of Section 2, Township 3 South, Range 3 East. A 5/8" rebar was found 0.20' above grade. This monument is shown as calculated on a Jason M. Copperwaite survey dated 2/08/2006, this survey also shows a distance of 310.20' between A-21 and Z-21 (Southwest Corner of the Southwest Quarter of Section 36, Township 2 South, Range 3 East) marked by a steel rod. The distance measure per this survey was 313.13'.

VICINITY REFERENCE:

The monument falls +/- 7' south of a east and west running private gravel drive. A newly constructed fence runs east and west +/- 10' south of the monument. A black oak tree stump is 2' west.

CORNER REFERENCE

- A.) 18" Cedar tree with Harrison County Witness Sign, and mag nail in SE face of tree. (This tree was previously used as reference, with distance to the face of tree.)
- B.) 20" Cedar tree with Harrison County "Witness Sign", and mag nail in SE face of tree. (This tree was previously used as reference, with distance to the face of tree.)
- C.) 6" wood fence post with mag nail in west side of post.
- D.) 6" wood post with mag nail in NW side of post.



NOTE: The bearings to the Corner References were made with a magnetic compass to the center of the referenced object. The distances are horizontal measurements to a mag nail placed perpendicular to the line of measurement, unless noted otherwise.

Bledsoe Riggert Cooper James
BRCJ
 LAND SURVEYING • CIVIL ENGINEERING • GIS
 1800 West Main Street, Paoli, Indiana 47454
 Phone: 812-723-2900 Email: mcooper@brccivil.com
 BRCJ Project No. 3-1550

Surveyor: *Matthew L. Cooper*
 Matthew L. Cooper
 Indiana Professional Survey No. PS20200079
 Date: June 22, 2022
 County Surveyor: Harold Klinstiver



HARRISON COUNTY CORNER PERPETUATION RECORD

Sections 2 , Township 3 South, Range 3 East

Corner Name: Northeast Corner Index: A-21

Monument Type: 5/8" Rebar Above/Below Grade: 0.10' Above Grade

Coordinate: Northing 1107727.46 Easting 191364.51 Datum:NAD83 IN EAST, US Survey Feet

CORNER REFERENCE IMAGES



MONUMENT



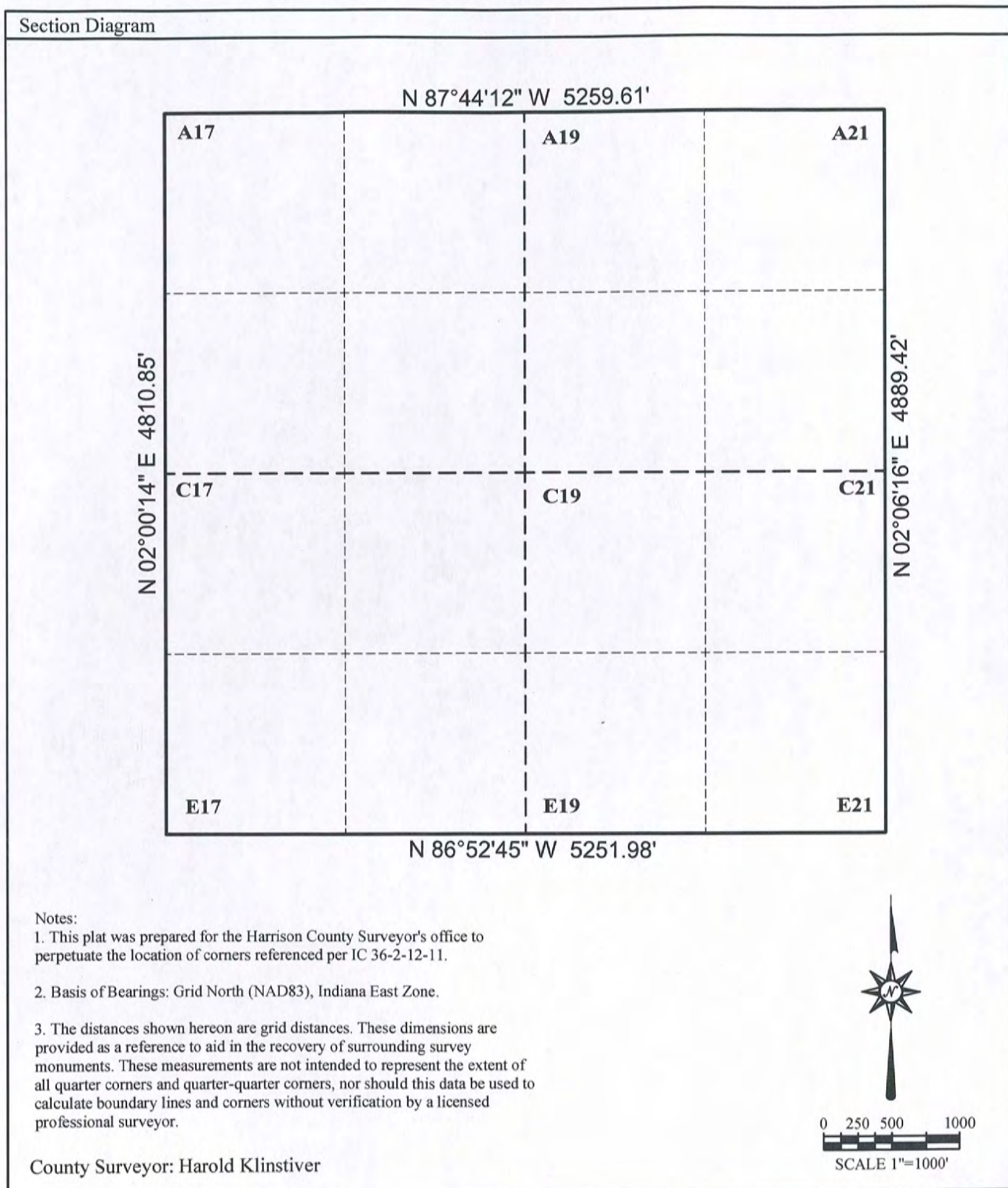
Photo looking NORTH



Photo looking SOUTH

HARRISON COUNTY CORNER PERPETUATION RECORD SECTION DIAGRAM

Section 2 Township 3 South Range 3 East





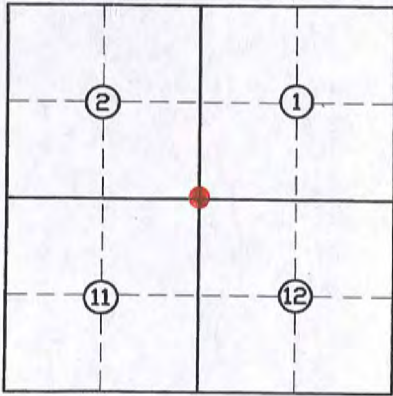
LAND CORNER RECORD
(RECTANGULAR SURVEYS)

21-E

Harrison County Surveyor's Reference Index Number: E-21

T 3 S R 3 E 2nd Mer., County Harrison State Indiana

Section Corner common to Sections 1, 2, 11 and 12

EXISTING SURVEYS	
Picture/Sketch	Picture/Sketch
	
No Original Government Survey Evidence Recovered	Evidence of Subsequent Corner Restoration Found
See Primavera & Associates Survey Job # 00-8338, recorded in Instrument Number 200111487.	Year of search <u>2017</u> By <u>VHM</u> <u>Recovered mag nail (per Primavera & Associates survey) in Witness Tree Road, 94'± West of centerline of Corydon- Ramsey Road.</u>
	<p>Perpetuation Record</p> <p>Monument and accessories established. Include brief description of area. <u>Monument left as recovered. Corner accessories established:</u></p> <p><u>Utility Pole with transformer, S 64° W, 92.6' slope, with Harrison County Surveyor's sign, nail is 7' South of North edge of pavement.</u></p> <p><u>SW Corner of Garage, N 16° E, 21.8'.</u></p> <p><u>Water Valve, S 62° E, 90.2' slope.</u></p> <p><u>Utility Pole, S 65° E, 50.51', MN + 0.3' on South side.</u></p> <p><u>Harrison County Surveyor's sign, N 12° E, 10.35'.</u></p> <p>N: 1102841.36 E: 191184.91</p>
Signature <u>Vik H. May</u>	<u>Heidi K. Kinshen Surveyor 8/8/17</u>
Date: <u>07/28/17</u>	

21-G

HARRISON COUNTY

CORNER 21-G TOWNSHIP 3 SOUTH RANGE 3 EAST 2 ND PRINCIPAL MERIDIAN

LOCATION	DESCRIPTION OF		DISTANCE FROM CORNER	BEARING FROM CORNER	DATE CHECKED	CHECKED BY	FIELD BOOK	REMARKS
	MONUMENT	REFERENCE						
S.E. Corner of NE 1/4 Section 11	Stone	22" Oak	19.83	N72-1E	6-2-81	T.B.	#19625	Sign Placed
		14" Hickory	14.15	S15-30E	6-2-81	T.B.		Sign Placed
		Electric Pole	34.74	S75-48W	6-2-81	T.B.		Sign Placed

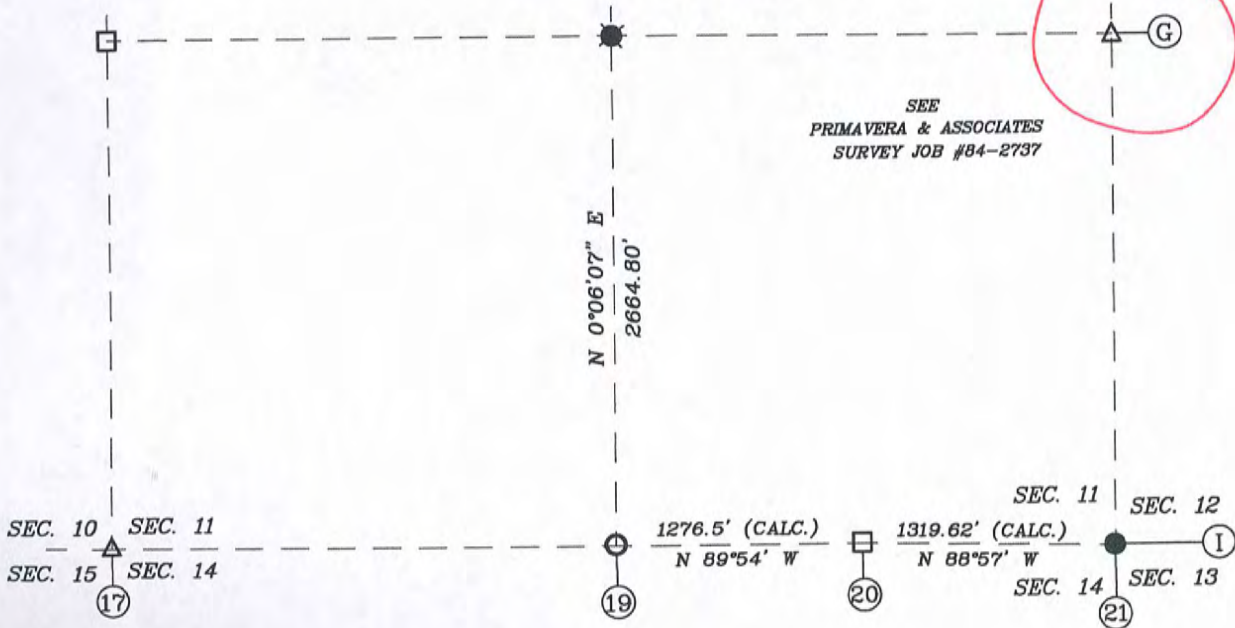
21-G

SECTION 11,
TOWNSHIP 3 SOUTH, RANGE 4 EAST,
FRANKLIN TOWNSHIP,
HARRISON COUNTY, INDIANA

FOR RECORDING INFORMATION

SEE SURVEY RECORDED
AS INSTRUMENT #201105556

SEE
PRIMAVERA & ASSOCIATES
SURVEY JOB #84-2737



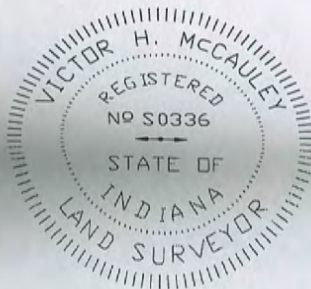
SURVEYOR'S CERTIFICATE

I, VICTOR H. McCAULEY, PROFESSIONAL LAND SURVEYOR, REGISTERED BY THE LAWS OF THE STATE OF INDIANA, HEREBY DECLARE THAT I HAVE RECOVERED, RESTORED AND PERPETUATED THE CORNERS SHOWN HEREON IN SECTION 11, TOWNSHIP 3 SOUTH, RANGE 4 EAST, FRANKLIN TOWNSHIP, HARRISON COUNTY, INDIANA IN ACCORDANCE WITH IAC TITLE 865, THE RULES FOR SURVEYS OF PUBLIC LANDS AND THE STATUTES OF THE STATE OF INDIANA, ALL TO THE BEST OF MY KNOWLEDGE AND BELIEF.

Victor H. McCauley
VICTOR H. McCAULEY, INDIANA LS# S0336

DATE OF SURVEY: DEC. 14, 2012

LAST DATE OF FIELD WORK: DEC. 13, 2012



LEGEND

- HISTORICAL STONE (SEE LAND CORNER RECORD)
- EXISTING PIPE (SEE LAND CORNER RECORD)
- STEEL PIN W/3/4" ALUM. DISC STAMPED TO DEPICT CORNER POSITION (SEE LAND CORNER RECORD)
- EXISTING STEEL PIN (SEE LAND CORNER RECORD)
- △ EXISTING MAG READING
- Ⓝ HARRISON COUNTY REFERENCE INDEX NUMBER

NORTH

SURVEYOR'S REPORT-THERE ARE NO CHANGES FROM THE MATTERS RECORDED IN INSTRUMENT NUMBER 201105556 OF THE HARRISON COUNTY, INDIANA RECORDS.

21-G

DIETZGEN NO. 385-3

Date 6-2-81

Party Chief T. Brown

Head Chain C. Mathes

Rear Chain M. Masse

BE, Con, NE 1/4,

Sec 11, T9S, R3E

71-00-55

19.83'

STONE

164-30-40

34.74

255-47-40 H.15

electric pole

1.20' Hickory

Stone is .50' out of ground & is painted

Trees have blaze marks & allum. nail in middle of blaze

Electric pole has allum. nail 1.00' off ground. Trees & pole have witness

signs. Stone is marked with a metal fence post & sign

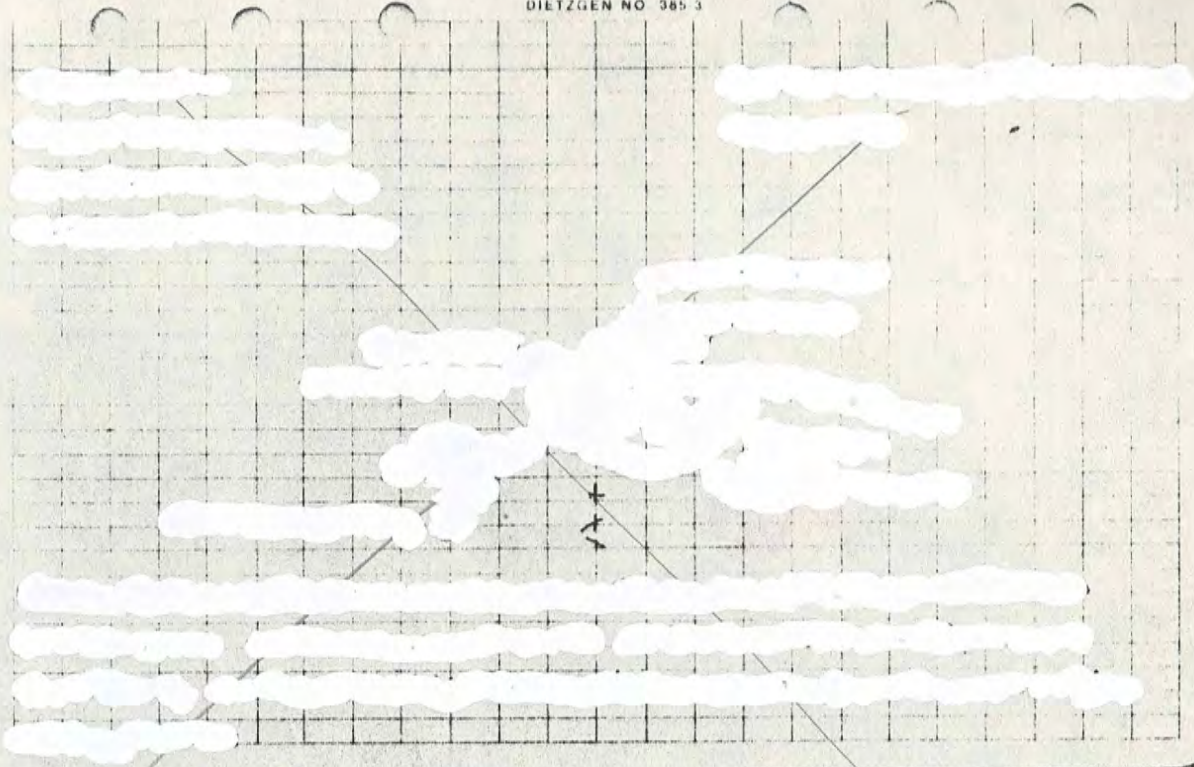
NORTH

1.80' Oak

CORNER 21-I TOWNSHIP 3 SOUTH RANGE 3 EAST 2 ND PRINCIPAL MERIDIAN

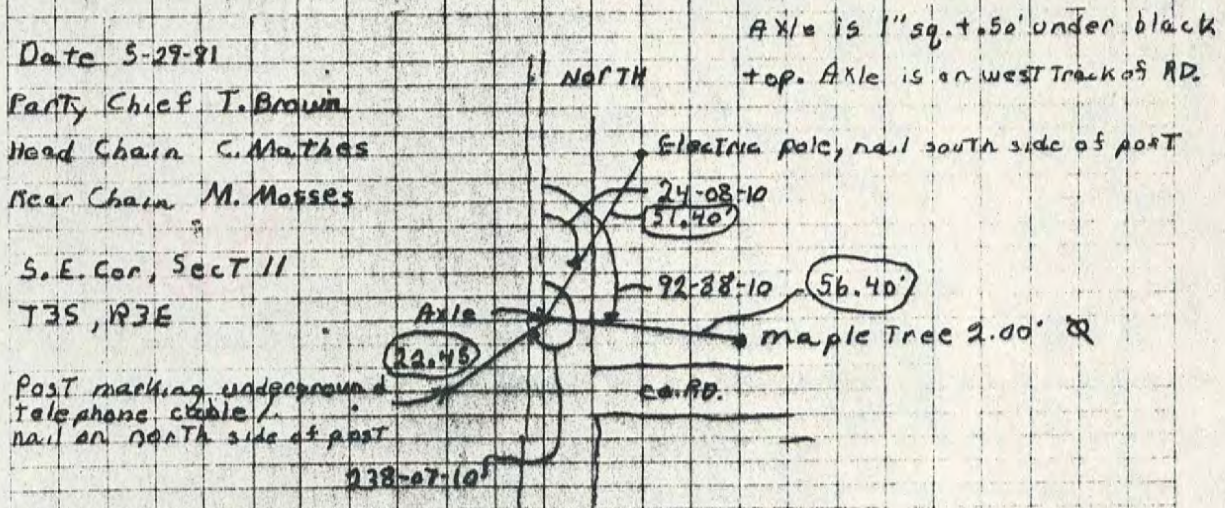
21-I

LOCATION	DESCRIPTION OF		DISTANCE FROM CORNER	BEARING FROM CORNER	DATE CHECKED	CHECKED BY	FIELD BOOK	REMARKS
	MONUMENT	REFERENCE						
SE Corner of Section 11	Axel Buried in Road	Electric Pole	51.40'	N24-9E	5-29-81	T.B.	#1Pg. 24	Sign Placed
		24" Maple	56.40'	S87.22E	5-29-81	T.B.		Sign Placed
		Under ground Telephone Cable Post	22.45	S58-7W	5-29-81	T.B.		Sign Placed



21-I

21I



Date 5-29-91
 Party Chief T. Brown
 Head Chain C. Mathes
 Rear Chain M. Mosser
 S.E. Cor, Sect 11
 T35, R3E

AXLE is 1" sq. + .50' under black top. AXLE is on west track of RD.

Post marking underground telephone cable, nail on north side of post

all posts & tree have witness signs. Tree has a blaze mark with a aluminum nail in middle. Direct post have a red sign 5'± above ground. Underground cable post has a aluminum nail (3.75") off ground. Electric post has a aluminum nail (1.10") off ground.

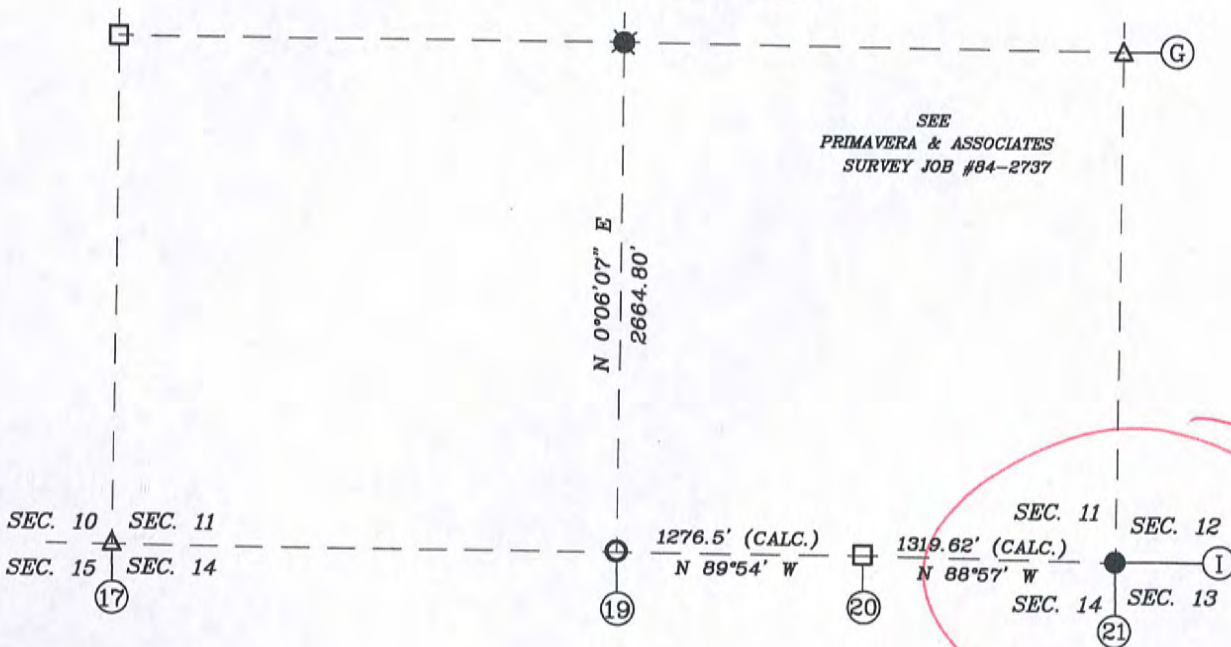
21-I

SECTION 11,
TOWNSHIP 3 SOUTH, RANGE 4 EAST,
FRANKLIN TOWNSHIP,
HARRISON COUNTY, INDIANA

FOR RECORDING INFORMATION

SEE SURVEY RECORDED
AS INSTRUMENT #201105566

SEE
PRIMAVERA & ASSOCIATES
SURVEY JOB #84-2737



SURVEYOR'S CERTIFICATE

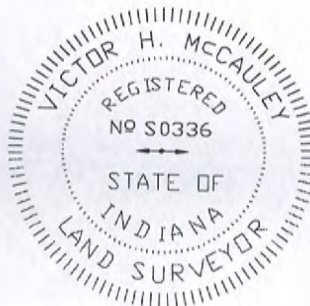
I, VICTOR H. McCAULEY, PROFESSIONAL LAND SURVEYOR, REGISTERED BY THE LAWS OF THE STATE OF INDIANA, HEREBY DECLARE THAT I HAVE RECOVERED, RESTORED AND PERPETUATED THE CORNERS SHOWN HEREON IN SECTION 11, TOWNSHIP 3 SOUTH, RANGE 4 EAST, FRANKLIN TOWNSHIP, HARRISON COUNTY, INDIANA IN ACCORDANCE WITH IAC TITLE 865, THE RULES FOR SURVEYS OF PUBLIC LANDS AND THE STATUTES OF THE STATE OF INDIANA, ALL TO THE BEST OF MY KNOWLEDGE AND BELIEF.

Victor H. McCauley

VICTOR H. McCAULEY, INDIANA LS# S0336

DATE OF SURVEY: DEC. 14, 2012

LAST DATE OF FIELD WORK: DEC. 13, 2012



NORTH

LEGEND

- HISTORICAL STONE (SEE LAND CORNER RECORD)
- EXISTING PIPE (SEE LAND CORNER RECORD)
- STEEL PIN W/3/4" ALUM. DISC STAMPED TO DEPICT CORNER POSITION (SEE LAND CORNER RECORD)
- EXISTING STEEL PIN (SEE LAND CORNER RECORD)
- △ EXISTING MAG READING
- Ⓝ HARRISON COUNTY REFERENCE INDEX NUMBER

SURVEYOR'S REPORT-THERE ARE NO CHANGES FROM THE MATTERS RECORDED IN INSTRUMENT NUMBER 201105566 OF THE HARRISON COUNTY INDIANA RECORDS

21-M

Harrison Co. No. M-21

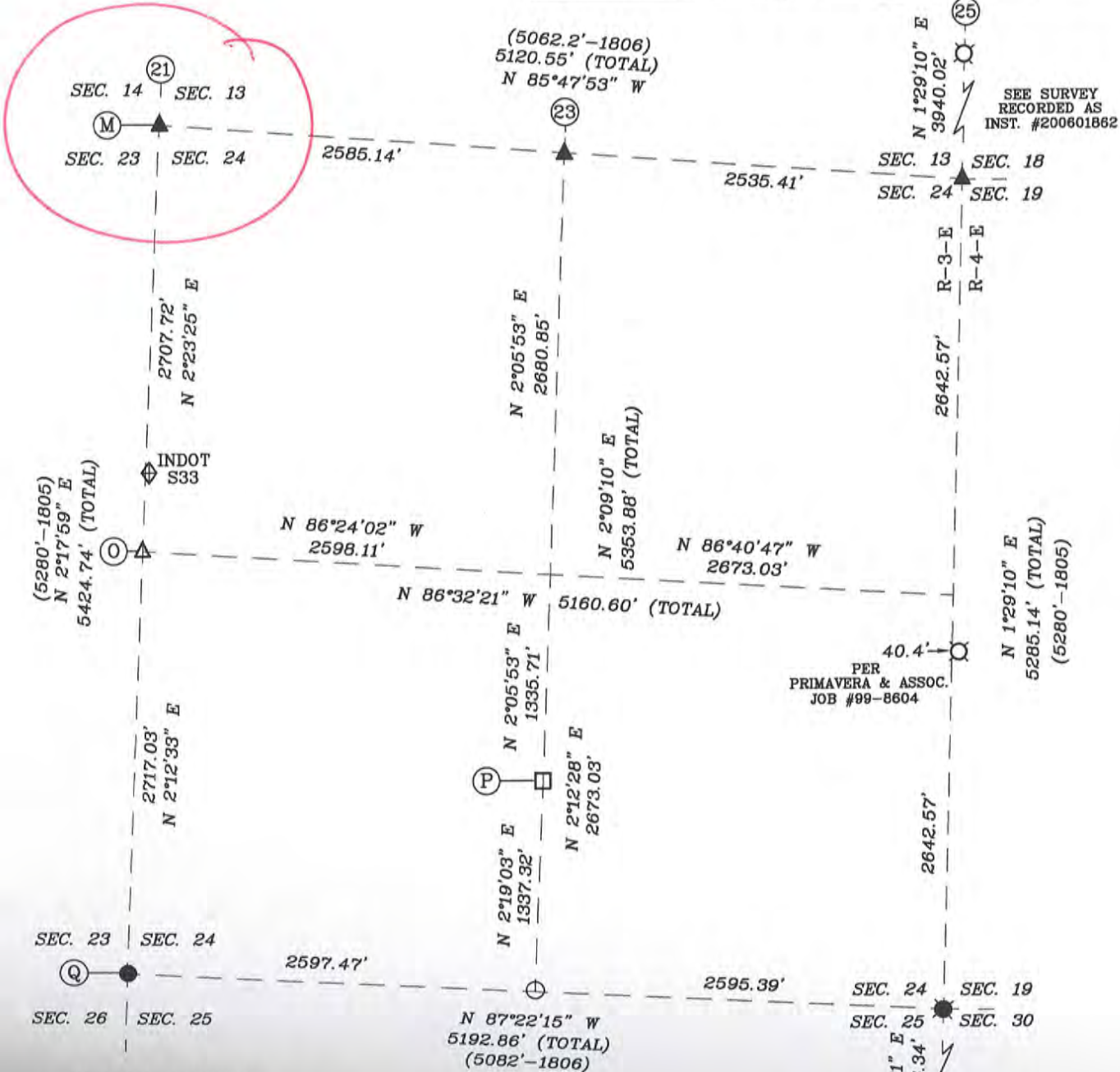
T 3 S, R 3 E 2nd Prin. Mer. County Harrison State Indiana

Section Corner common to Sections 13, 14, 23 and 24

EXISTING SURVEYS	
No Original Government Survey Evidence Recovered	Picture
See surveys recorded as Survey Book 2, Page 535 and Instrument Number 99013047 of the Harrison County, Indiana records.	N/A
Subsequent Corner Restoration	Evidence of Subsequent Corner Restoration Found
Year surveyed _____ By _____ Where filed or recorded _____ Monument _____ <small>(Original, concrete post, iron rod, etc...)</small> Bearing Trees, Reference Objects Species _____ Diameter _____ Bearing _____ Distance _____	Year of search <u>2012</u> By <u>VHM</u> <u>Recovered #4 steel pin 0.2' deep with a mag nail over the monument in the intersection of Quarry Road and Corydon-Ramsey Road.</u>
<div style="border: 1px solid black; width: 200px; height: 150px; margin: 0 auto; position: relative;"> <div style="position: absolute; top: 50%; left: 50%; transform: translate(-50%, -50%); border: 1px solid black; border-radius: 50%; width: 30px; height: 30px; text-align: center; line-height: 30px;">24</div> </div>	<p style="text-align: center;">Perpetuation Record</p> <p>Monument and accessories established. Include brief description of area. <u>The monument was left in place as recovered and a new mag nail was set in a concrete plug over the monument. This corner has a long lineage and has been used by local surveyors as the Section Corner for well over 15 years. The position of the corner is supported by measurements to adjacent monuments in all cardinal directions and by very old and distinct cultural features in the vicinity. Corner accessories established:</u></p> <p><u>Utility Pole (OHE), S 50° E, 50.56' to a mag nail up 1.0' on SW side with Harrison County Surveyor's sign</u></p> <p><u>Security Fence Corner, S 43° W, 48.80'</u></p> <p><u>Utility Pole (OHT), N 64° W, 73.30' to a mag nail up 1.4' on SE side with Harrison County Surveyor's sign</u></p> <p><u>NW End 12" RCP, N33° E, 51.71'</u></p>
Signature <u>V.H.M.</u> Date: <u>November 26, 2012</u>	N: 1089885.03 { INDOT E: 190752.36 { S33 N: 1092091.89 { Corner E: 190817.70 { <p style="text-align: right;"><i>Harold K. Custer 2012</i></p>

SECTION 24,
TOWNSHIP 3 SOUTH, RANGE 3 EAST,
HARRISON TOWNSHIP,
HARRISON COUNTY, INDIANA

FOR RECORDING INFORMATION



SEE SURVEY
RECORDED AS
INST. #200601862

PER
PRIMAVERA & ASSOC.
JOB #99-8604

SURVEYOR'S CERTIFICATE

I, VICTOR H. McCAULEY, PROFESSIONAL LAND SURVEYOR, REGISTERED BY THE LAWS OF THE STATE OF INDIANA, HEREBY DECLARE THAT I HAVE RECOVERED, RESTORED AND PERPETUATED THE CORNERS SHOWN HEREON IN SECTION 24, TOWNSHIP 3, SOUTH, RANGE 3 EAST, HARRISON TOWNSHIP, HARRISON COUNTY, INDIANA IN ACCORDANCE WITH IAC TITLE 865, THE RULES FOR SURVEYS OF PUBLIC LANDS AND THE STATUTES OF THE STATE OF INDIANA, ALL TO THE BEST OF MY KNOWLEDGE AND BELIEF.

Vict H. M.
VICTOR H. McCAULEY, INDIANA LS# 50336



LEGEND

- HISTORICAL STONE (SEE REPORT)
- EXISTING PIPE (SEE REPORT)
- ⊙ EXISTING STEEL PIN W/CAP (SEE REPORT)
- STEEL PIN W/3/4" ALUM. DISC STAMPED TO DEPICT CORNER POSITION (SEE REPORT)
- EXISTING STEEL PIN (SEE REPORT)
- △ EXISTING MAG NAIL (SEE REPORT)
- ▲ MAG NAIL SET (SEE REPORT)

M-21

**PLAT OF SURVEY
2012 HARRISON COUNTY PERPETUATION PROJECT**

SITUATED IN SECTION 24, TOWNSHIP 3 SOUTH, RANGE 3 EAST, HARRISON TOWNSHIP, HARRISON, INDIANA.

REPORT OF SURVEY

THIS SURVEY WAS PERFORMED FOR HAROLD KLINSTIVER, HARRISON COUNTY SURVEYOR AS A PERPETUATION PROJECT FOR THE CORNERS IN SECTION 24, TOWNSHIP 3 SOUTH, RANGE 3 EAST, HARRISON TOWNSHIP, HARRISON, INDIANA. THIS SURVEY IS A CONTINUATION OF SEVERAL PRIOR SURVEYS, IN THE SAME VICINITY, BY THIS FIRM.

THE ORIGINAL GOVERNMENT SURVEYS WERE CONDUCTED BY JOSEPH H. SARWELL, DEPUTY SURVEYOR IN JANUARY OF 1806. SUBSEQUENT SURVEYS WERE PERFORMED BY HARRISON COUNTY SURVEYORS AND PRIVATE SURVEYORS AS CITED BELOW. THE ORIGINAL AND SUBSEQUENT SURVEYOR NOTES ARE ON FILE IN THE HARRISON COUNTY SURVEYOR'S OFFICE.

PRIOR TO PERFORMING THIS SURVEY, I REVIEWED THE AVAILABLE ORIGINAL, SUBSEQUENT AND PRIVATE SURVEY NOTES. I RESEARCHED PERTINENT DEEDS AND ADJOINING DEEDS. I CONTACTED ADJOINING LAND OWNERS, CONSULTED WITH THE HARRISON COUNTY SURVEYOR AND OTHER LOCAL SURVEYORS FOR INFORMATION PERTAINING TO THE LOCATION OF CORNERS NEEDED TO PERFORM THIS SURVEY.

THE CORNERS RECOVERED, RESTORED AND PERPETUATED BY THIS SURVEY ARE MARKED IN THE LEGEND. THE BEARING BETWEEN MONUMENTS IS GRID NORTH AS DETERMINED BY GPS SURVEYS.

HORIZONTAL AND VERTICAL CONTROLS FOR THIS SURVEY ARE BASED ON STATIC AND RTK GPS METHODS AND COORDINATES WERE CONSTRAINED TO AN NGS OPUS SOLUTION POSITION, INDIANA STATE PLANE COORDINATE SYSTEM, EAST ZONE, 1983(2012) DATUM, FOR AN ON-SITE GPS BASE STATION. THIS IS A RETRACEMENT "RURAL CLASS SURVEY" AS DEFINED BY 865 IAC 1-12 SECTION 7, PARAGRAPH 3 (e-3) AND THE FIELD WORK IS WITHIN THE "RELATIVE POSITIONAL ACCURACY" SPECIFICATIONS CITED THEREIN.

CONVENTIONAL TERRESTRIAL TRAVERSES WERE USED TO DETERMINE CORNER POSITIONS THAT WERE DEEMED UNSUITABLE FOR GPS OBSERVATIONS. THE POSITION OF MONUMENTS WAS VERIFIED WITH REDUNDANT MEASUREMENTS. ALL TRAVERSES WERE EITHER CLOSED TRAVERSES OR WERE CONTROLLED BY GPS SURVEY METHODS

THIS SURVEY IS BASED ON THE INDIANA STATE PLANE COORDINATE SYSTEM, EAST ZONE, 1983 (2012) DATUM, U.S. SURVEY FOOT. THE DISTANCES SHOWN ARE SEA LEVEL GRID DISTANCES, BASED ON A COMBINED SCALE FACTOR OF 0.99996005. TO CONVERT SURVEY DISTANCES TO HORIZONTAL GROUND LEVEL DISTANCES, DIVIDE THE SURVEY DISTANCES BY THE SCALE FACTOR

EXISTING MONUMENTS RECOVERED FROM PRIOR SURVEYS

M-21 SECTION CORNER COMMON TO SECTIONS 13, 14, 23 & 24, T-3-S, R-3-E

RECOVERED #4 STEEL PIN 0.2' DEEP WITH A MAG NAIL OVER THE MONUMENT IN THE INTERSECTION OF QUARRY ROAD AND CORYDON-RAMSEY ROAD. THE MONUMENT WAS LEFT IN PLACE AS RECOVERED AND A NEW MAG NAIL WAS SET IN A CONCRETE PLUG OVER THE MONUMENT. THIS CORNER HAS A LONG LINAGE AND HAS BEEN USED BY LOCAL SURVEYORS AS THE SECTION CORNER FOR WELL OVER 15 YEARS. THE POSITION OF THE CORNER IS SUPPORTED BY MEASUREMENTS TO ADJACENT MONUMENTS IN ALL CARDINAL DIRECTIONS AND BY VERY OLD AND DISTINCT CULTURAL FEATURES IN THE VICINITY. CORNER ACCESSORIES ESTABLISHED:
UTILITY POLE (OHE), S50°E, 50.56' TO A MAG NAIL UP 1.0' ON SW SIDE W/HCSS
SECURITY FENCE CORNER, S43°W, 48.80'
UTILITY POLE (OHT), N64°W, 73.30' TO A MAG NAIL UP 1.4' ON SE SIDE W/HCSS
NW END 12" RCP, N33°E, 51.71'

M-23 QUARTER SECTION CORNER TO SECTIONS 13 & 24, T-3-S, R-3-E

RECOVERED RAILROAD SPIKE 0.4' DEEP WITH A MASONRY NAIL OVER THE MONUMENT IN THE INTERSECTION OF QUARRY ROAD AND CLINE ROAD. THE MONUMENT WAS LEFT IN PLACE AS RECOVERED AND A NEW MAG NAIL WAS SET IN A CONCRETE PLUG OVER THE MONUMENT. THIS CORNER HAS A LONG LINAGE AND HAS BEEN USED BY LOCAL SURVEYORS AS THE QUARTER CORNER FOR WELL OVER 15 YEARS. THE POSITION OF THE CORNER IS SUPPORTED BY MEASUREMENTS TO ADJACENT MONUMENTS IN ALL CARDINAL DIRECTIONS AND BY VERY OLD AND DISTINCT CULTURAL FEATURES IN THE VICINITY. CORNER ACCESSORIES ESTABLISHED:
SW OVERHEAD SIGN BOLT, N52°E, 62.80'
FIRE HYDRANT, N37°W, 46.98'

UTILITY POLE, S41°W, 41.80' TO BOTTOM NAIL OF HCSS

PRIVATE SURVEYORS AS CITED BELOW. THE ORIGINAL AND SUBSEQUENT SURVEYOR NOTES ARE ON FILE IN THE HARRISON COUNTY SURVEYOR'S OFFICE.

PRIOR TO PERFORMING THIS SURVEY, I REVIEWED THE AVAILABLE ORIGINAL, SUBSEQUENT AND PRIVATE SURVEY NOTES. I RESEARCHED PERTINENT DEEDS AND ADJOINING DEEDS. I CONTACTED ADJOINING LAND OWNERS, CONSULTED WITH THE HARRISON COUNTY SURVEYOR AND OTHER LOCAL SURVEYORS FOR INFORMATION PERTAINING TO THE LOCATION OF CORNERS NEEDED TO PERFORM THIS SURVEY.

THE CORNERS RECOVERED, RESTORED AND PERPETUATED BY THIS SURVEY ARE MARKED IN THE LEGEND. THE BEARING BETWEEN MONUMENTS IS GRID NORTH AS DETERMINED BY GPS SURVEYS.

HORIZONTAL AND VERTICAL CONTROLS FOR THIS SURVEY ARE BASED ON STATIC AND RTK GPS METHODS AND COORDINATES WERE CONSTRAINED TO AN NGS OPUS SOLUTION POSITION, INDIANA STATE PLANE COORDINATE SYSTEM, EAST ZONE, 1983(2012) DATUM, FOR AN ON-SITE GPS BASE STATION. THIS IS A RETRACEMENT "RURAL CLASS SURVEY" AS DEFINED BY 865 IAC 1-12 SECTION 7, PARAGRAPH 3 (e-3) AND THE FIELD WORK IS WITHIN THE "RELATIVE POSITIONAL ACCURACY" SPECIFICATIONS CITED THEREIN.

CONVENTIONAL TERRESTRIAL TRAVERSES WERE USED TO DETERMINE CORNER POSITIONS THAT WERE DEEMED UNSUITABLE FOR GPS OBSERVATIONS. THE POSITION OF MONUMENTS WAS VERIFIED WITH REDUNDANT MEASUREMENTS. ALL TRAVERSES WERE EITHER CLOSED TRAVERSES OR WERE CONTROLLED BY GPS SURVEY METHODS

THIS SURVEY IS BASED ON THE INDIANA STATE PLANE COORDINATE SYSTEM, EAST ZONE, 1983 (2012) DATUM, U.S. SURVEY FOOT. THE DISTANCES SHOWN ARE SEA LEVEL GRID DISTANCES, BASED ON A COMBINED SCALE FACTOR OF 0.99996005. TO CONVERT SURVEY DISTANCES TO HORIZONTAL GROUND LEVEL DISTANCES, DIVIDE THE SURVEY DISTANCES BY THE SCALE FACTOR

EXISTING MONUMENTS RECOVERED FROM PRIOR SURVEYS

M-21 SECTION CORNER COMMON TO SECTIONS 13, 14, 23 & 24, T-3-S, R-3-E

RECOVERED #4 STEEL PIN 0.2' DEEP WITH A MAG NAIL OVER THE MONUMENT IN THE INTERSECTION OF QUARRY ROAD AND CORYDON-RAMSEY ROAD. THE MONUMENT WAS LEFT IN PLACE AS RECOVERED AND A NEW MAG NAIL WAS SET IN A CONCRETE PLUG OVER THE MONUMENT. THIS CORNER HAS A LONG LINAGE AND HAS BEEN USED BY LOCAL SURVEYORS AS THE SECTION CORNER FOR WELL OVER 15 YEARS. THE POSITION OF THE CORNER IS SUPPORTED BY MEASUREMENTS TO ADJACENT MONUMENTS IN ALL CARDINAL DIRECTIONS AND BY VERY OLD AND DISTINCT CULTURAL FEATURES IN THE VICINITY. CORNER ACCESSORIES ESTABLISHED:
UTILITY POLE (OHE), S50°E, 50.56' TO A MAG NAIL UP 1.0' ON SW SIDE W/HCSS
SECURITY FENCE CORNER, S43°W, 48.80'
UTILITY POLE (OHT), N64°W, 73.30' TO A MAG NAIL UP 1.4' ON SE SIDE W/HCSS
NW END 12" RCP, N33°E, 51.71'

M-23 QUARTER SECTION CORNER TO SECTIONS 13 & 24, T-3-S, R-3-E

RECOVERED RAILROAD SPIKE 0.4' DEEP WITH A MASONRY NAIL OVER THE MONUMENT IN THE INTERSECTION OF QUARRY ROAD AND CLINE ROAD. THE MONUMENT WAS LEFT IN PLACE AS RECOVERED AND A NEW MAG NAIL WAS SET IN A CONCRETE PLUG OVER THE MONUMENT. THIS CORNER HAS A LONG LINAGE AND HAS BEEN USED BY LOCAL SURVEYORS AS THE QUARTER CORNER FOR WELL OVER 15 YEARS. THE POSITION OF THE CORNER IS SUPPORTED BY MEASUREMENTS TO ADJACENT MONUMENTS IN ALL CARDINAL DIRECTIONS AND BY VERY OLD AND DISTINCT CULTURAL FEATURES IN THE VICINITY. CORNER ACCESSORIES ESTABLISHED:
SW OVERHEAD SIGN BOLT, N52°E, 62.80'
FIRE HYDRANT, N37°W, 46.98'
UTILITY POLE, S41°W, 41.80' TO BOTTOM NAIL OF HCSS

Job #20077-24

M-21

**PLAT OF SURVEY
2012 HARRISON COUNTY PERPETUATION PROJECT**

SITUATED IN SECTION 24, TOWNSHIP 3 SOUTH, RANGE 3 EAST, HARRISON TOWNSHIP, HARRISON, INDIANA.

CORNERS RESTORED CONTINUED

Q-25 EAST SECTION CORNER TO SECTIONS 24 & 25, T-3-S, R-3-E

RESTORED THE SECTION CORNER ON THE RANGE LINE FROM MONUMENTS RECOVERED TO THE NORTH, SOUTH AND WEST. SET A #5 BY 30" PIN 1.0' DEEP IN CULTIVATED FIELD. SET WITNESS MONUMENT W/ CARSONITE POST ON THE RANGE LINE, 120.00' NORTH OF THE SECTION CORNER. NO OTHER WITNESS OBJECTS AVAILABLE.

S33 INDOT MONUMENT

RECOVERED AN INDOT SURVEY DISK IN THE NORTHEAST ABUTMENT OF THE CORYDON-RAMSEY ROAD INTERSTATE 64 OVERPASS BRIDGE.

FOR ADDITIONAL CORNER INFORMATION, SEE THE INDIVIDUAL CORNER RECORDS IN THE HARRISON COUNTY SURVEYORS OFFICE.

THIS REPORT OF SURVEY IS NOT COMPLETE WITHOUT THE SURVEY PLAT.

SURVEYOR'S AFFIDAVIT

I, VICTOR H. McCAULEY, PROFESSIONAL LAND SURVEYOR, AND REGISTERED BY THE LAWS OF THE STATE OF INDIANA, HEREBY CERTIFY THAT I HAVE SURVEY AND SUBDIVIDED THE LAND IN SECTION 24, TOWNSHIP 3 SOUTH, RANGE 3 EAST, HARRISON TOWNSHIP, HARRISON COUNTY, INDIANA, IN ACCORDANCE WITH IAC TITLE 865 AND THE RULES FOR SURVEYS OF PUBLIC LANDS AND THE STATUES OF THE STATE OF INDIANA, ALL TO THE BEST OF MY KNOWLEDGE AND BELIEF.

THE PLAT MAP AND SURVEY NOTES ARE AN ACCURATE REPRESENTATION OF THE CORNERS RECOVERED AND RESTORED DURING THIS SURVEY. LAST DATE OF FIELD WORK WAS NOVEMBER 26, 2012.


VICTOR H. McCAULEY, INDIANA LS# 0336

Nov. 30, 2012
DATE

DECLARATION

I AFFIRM, UNDER THE PENALTIES FOR PERJURY, THAT I HAVE TAKEN RESPONSIBLE CARE TO REDACT, EACH SOCIAL SECURITY NUMBER IN THE DOCUMENT, UNLESS REQUIRED BY LAW.

DECLARANT

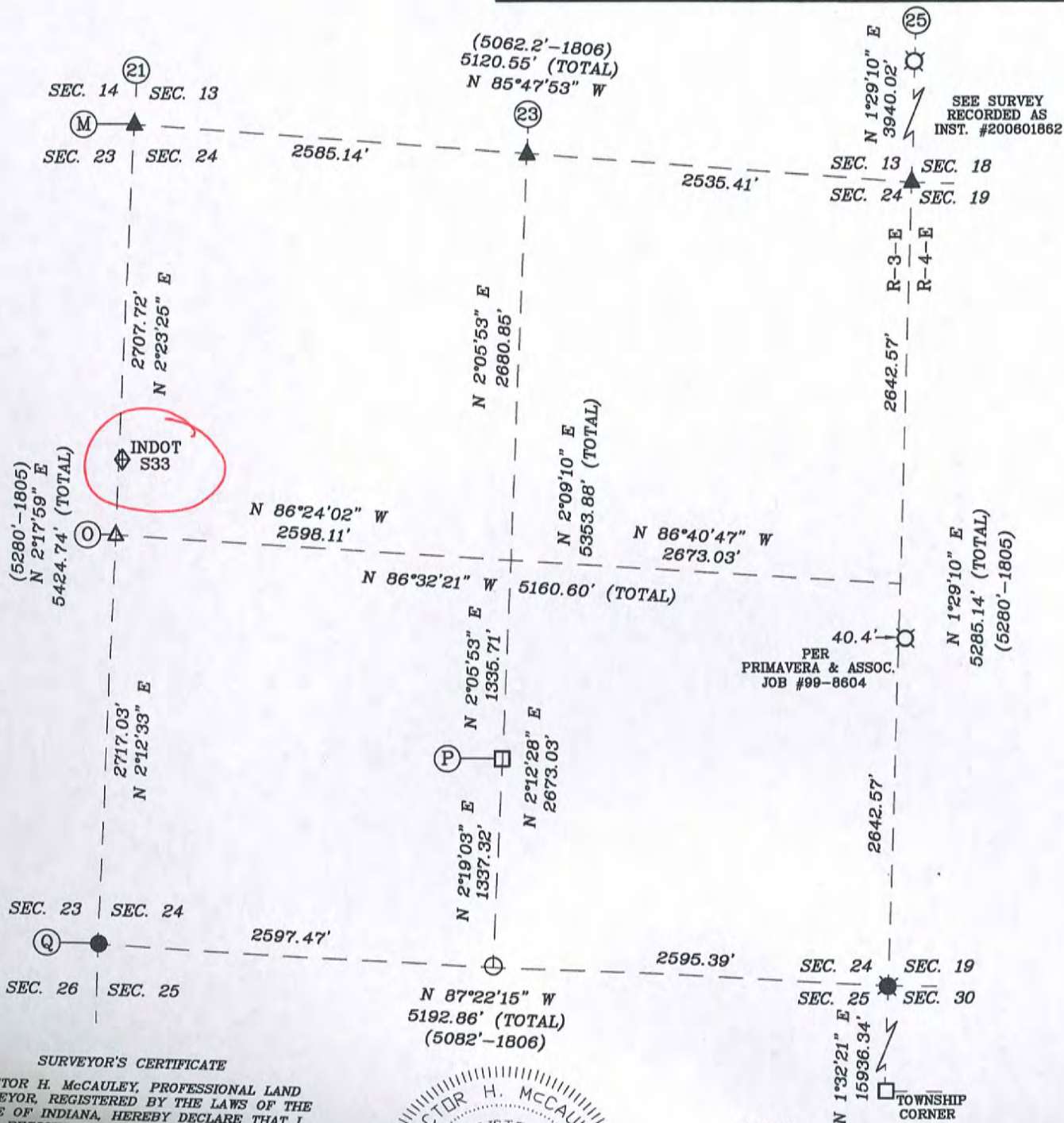
VICTOR H. McCAULEY


SIGNATURE OF DECLARANT

PRINTED NAME OF DECLARANT

SECTION 24,
TOWNSHIP 3 SOUTH, RANGE 3 EAST,
HARRISON TOWNSHIP,
HARRISON COUNTY, INDIANA

FOR RECORDING INFORMATION



SEE SURVEY
RECORDED AS
INST. #200601862

PER
PRIMAVERA & ASSOC.
JOB #99-8604

SURVEYOR'S CERTIFICATE

I, VICTOR H. McCAULEY, PROFESSIONAL LAND SURVEYOR, REGISTERED BY THE LAWS OF THE STATE OF INDIANA, HEREBY DECLARE THAT I HAVE RECOVERED, RESTORED AND PERPETUATED THE CORNERS SHOWN HEREON IN SECTION 24, TOWNSHIP 3, SOUTH, RANGE 3 EAST, HARRISON TOWNSHIP, HARRISON COUNTY, INDIANA IN ACCORDANCE WITH IAC TITLE 865, THE RULES FOR SURVEYS OF PUBLIC LANDS AND THE STATUTES OF THE STATE OF INDIANA, ALL TO THE BEST OF MY KNOWLEDGE AND BELIEF.

Vict H. M.

VICTOR H. McCAULEY, INDIANA LS# 50336

DATE OF SURVEY: NOV. 26, 2012

LAST DATE OF FIELD WORK: NOV. 26, 2012



LEGEND

- HISTORICAL STONE (SEE REPORT)
- EXISTING PIPE (SEE REPORT)
- ⊙ EXISTING STEEL PIN W/CAP (SEE REPORT)
- STEEL PIN W/3/8" ALUM. DISC STAMPED TO DEPICT CORNER POSITION (SEE REPORT)
- EXISTING STEEL PIN (SEE REPORT)
- ▲ EXISTING MAG NAIL (SEE REPORT)
- ▲ MAG NAIL SET (SEE REPORT)
- ◆ INDOT S33
- Ⓜ HARRISON COUNTY REFERENCE

888 N-21

**PLAT OF SURVEY
2012 HARRISON COUNTY PERPETUATION PROJECT**

SITUATED IN SECTION 24, TOWNSHIP 3 SOUTH, RANGE 3 EAST, HARRISON TOWNSHIP, HARRISON, INDIANA.

REPORT OF SURVEY

THIS SURVEY WAS PERFORMED FOR HAROLD KLINSTIVER, HARRISON COUNTY SURVEYOR AS A PERPETUATION PROJECT FOR THE CORNERS IN SECTION 24, TOWNSHIP 3 SOUTH, RANGE 3 EAST, HARRISON TOWNSHIP, HARRISON, INDIANA. THIS SURVEY IS A CONTINUATION OF SEVERAL PRIOR SURVEYS, IN THE SAME VICINITY, BY THIS FIRM.

THE ORIGINAL GOVERNMENT SURVEYS WERE CONDUCTED BY JOSEPH H. SARWELL, DEPUTY SURVEYOR IN JANUARY OF 1806. SUBSEQUENT SURVEYS WERE PERFORMED BY HARRISON COUNTY SURVEYORS AND PRIVATE SURVEYORS AS CITED BELOW. THE ORIGINAL AND SUBSEQUENT SURVEYOR NOTES ARE ON FILE IN THE HARRISON COUNTY SURVEYOR'S OFFICE.

PRIOR TO PERFORMING THIS SURVEY, I REVIEWED THE AVAILABLE ORIGINAL, SUBSEQUENT AND PRIVATE SURVEY NOTES. I RESEARCHED PERTINENT DEEDS AND ADJOINING DEEDS. I CONTACTED ADJOINING LAND OWNERS, CONSULTED WITH THE HARRISON COUNTY SURVEYOR AND OTHER LOCAL SURVEYORS FOR INFORMATION PERTAINING TO THE LOCATION OF CORNERS NEEDED TO PERFORM THIS SURVEY.

THE CORNERS RECOVERED, RESTORED AND PERPETUATED BY THIS SURVEY ARE MARKED IN THE LEGEND. THE BEARING BETWEEN MONUMENTS IS GRID NORTH AS DETERMINED BY GPS SURVEYS.

HORIZONTAL AND VERTICAL CONTROLS FOR THIS SURVEY ARE BASED ON STATIC AND RTK GPS METHODS AND COORDINATES WERE CONSTRAINED TO AN NGS OPUS SOLUTION POSITION, INDIANA STATE PLANE COORDINATE SYSTEM, EAST ZONE, 1983(2012) DATUM, FOR AN ON-SITE GPS BASE STATION. THIS IS A RETRACEMENT "RURAL CLASS SURVEY" AS DEFINED BY 865 IAC 1-12 SECTION 7, PARAGRAPH 3 (e-3) AND THE FIELD WORK IS WITHIN THE "RELATIVE POSITIONAL ACCURACY" SPECIFICATIONS CITED THEREIN.

CONVENTIONAL TERRESTRIAL TRAVERSES WERE USED TO DETERMINE CORNER POSITIONS THAT WERE DEEMED UNSUITABLE FOR GPS OBSERVATIONS. THE POSITION OF MONUMENTS WAS VERIFIED WITH REDUNDANT MEASUREMENTS. ALL TRAVERSES WERE EITHER CLOSED TRAVERSES OR WERE CONTROLLED BY GPS SURVEY METHODS

THIS SURVEY IS BASED ON THE INDIANA STATE PLANE COORDINATE SYSTEM, EAST ZONE, 1983 (2012) DATUM, U.S. SURVEY FOOT. THE DISTANCES SHOWN ARE SEA LEVEL GRID DISTANCES, BASED ON A COMBINED SCALE FACTOR OF 0.99996005. TO CONVERT SURVEY DISTANCES TO HORIZONTAL GROUND LEVEL DISTANCES, DIVIDE THE SURVEY DISTANCES BY THE SCALE FACTOR

EXISTING MONUMENTS RECOVERED FROM PRIOR SURVEYS

M-21 SECTION CORNER COMMON TO SECTIONS 13, 14, 23 & 24, T-3-S, R-3-E

RECOVERED #4 STEEL PIN 0.2' DEEP WITH A MAG NAIL OVER THE MONUMENT IN THE INTERSECTION OF QUARRY ROAD AND CORYDON-RAMSEY ROAD. THE MONUMENT WAS LEFT IN PLACE AS RECOVERED AND A NEW MAG NAIL WAS SET IN A CONCRETE PLUG OVER THE MONUMENT. THIS CORNER HAS A LONG LINAGE AND HAS BEEN USED BY LOCAL SURVEYORS AS THE SECTION CORNER FOR WELL OVER 15 YEARS. THE POSITION OF THE CORNER IS SUPPORTED BY MEASUREMENTS TO ADJACENT MONUMENTS IN ALL CARDINAL DIRECTIONS AND BY VERY OLD AND DISTINCT CULTURAL FEATURES IN THE VICINITY. CORNER ACCESSORIES ESTABLISHED:
UTILITY POLE (OHE), S50°E, 50.56' TO A MAG NAIL UP 1.0' ON SW SIDE W/HCSS
SECURITY FENCE CORNER, S43°W, 48.80'
UTILITY POLE (OHT), N64°W, 73.30' TO A MAG NAIL UP 1.4' ON SE SIDE W/HCSS
NW END 12" RCP, N33°E, 51.71'

M-23 QUARTER SECTION CORNER TO SECTIONS 13 & 24, T-3-S, R-3-E

RECOVERED RAIL ROAD SPIKE 0.4' DEEP WITH A MASONRY NAIL OVER THE MONUMENT IN THE INTERSECTION OF QUARRY ROAD AND CLINE ROAD. THE MONUMENT WAS LEFT IN PLACE AS RECOVERED AND A NEW MAG NAIL WAS SET IN A CONCRETE PLUG OVER THE MONUMENT. THIS CORNER HAS A LONG LINAGE AND HAS BEEN USED BY LOCAL SURVEYORS AS THE QUARTER CORNER FOR WELL OVER 15 YEARS. THE POSITION OF THE CORNER IS SUPPORTED BY MEASUREMENTS TO ADJACENT MONUMENTS IN ALL CARDINAL DIRECTIONS AND BY VERY OLD AND DISTINCT CULTURAL FEATURES IN THE VICINITY. CORNER ACCESSORIES ESTABLISHED:
SW OVERHEAD SIGN BOLT, N52°E, 62.80'
FIRE HYDRANT, N37°W, 46.98'
UTILITY POLE, S41°W, 41.80' TO BOTTOM NAIL OF HCSS

~~0000~~ N-21

**PLAT OF SURVEY
2012 HARRISON COUNTY PERPETUATION PROJECT**

SITUATED IN SECTION 24, TOWNSHIP 3 SOUTH, RANGE 3 EAST, HARRISON TOWNSHIP, HARRISON, INDIANA.

CORNERS RESTORED CONTINUED

Q-25 EAST SECTION CORNER TO SECTIONS 24 & 25, T-3-S, R-3-E

RESTORED THE SECTION CORNER ON THE RANGE LINE FROM MONUMENTS RECOVERED TO THE NORTH, SOUTH AND WEST. SET A #5 BY 30" PIN 1.0' DEEP IN CULTIVATED FIELD. SET WITNESS MONUMENT W/ CARSONITE POST ON THE RANGE LINE, 120.00' NORTH OF THE SECTION CORNER. NO OTHER WITNESS OBJECTS AVAILABLE.

S33 INDOT MONUMENT

RECOVERED AN INDOT SURVEY DISK IN THE NORTHEAST ABUTMENT OF THE CORYDON-RAMSEY ROAD INTERSTATE 64 OVERPASS BRIDGE.

FOR ADDITIONAL CORNER INFORMATION, SEE THE INDIVIDUAL CORNER RECORDS IN THE HARRISON COUNTY SURVEYORS OFFICE.

THIS REPORT OF SURVEY IS NOT COMPLETE WITHOUT THE SURVEY PLAT.

SURVEYOR'S AFFIDAVIT

I, VICTOR H. McCAULEY, PROFESSIONAL LAND SURVEYOR, AND REGISTERED BY THE LAWS OF THE STATE OF INDIANA, HEREBY CERTIFY THAT I HAVE SURVEY AND SUBDIVIDED THE LAND IN SECTION 24, TOWNSHIP 3 SOUTH, RANGE 3 EAST, HARRISON TOWNSHIP, HARRISON COUNTY, INDIANA, IN ACCORDANCE WITH IAC TITLE 865 AND THE RULES FOR SURVEYS OF PUBLIC LANDS AND THE STATUES OF THE STATE OF INDIANA, ALL TO THE BEST OF MY KNOWLEDGE AND BELIEF.

THE PLAT MAP AND SURVEY NOTES ARE AN ACCURATE REPRESENTATION OF THE CORNERS RECOVERED AND RESTORED DURING THIS SURVEY. LAST DATE OF FIELD WORK WAS NOVEMBER 26, 2012.

Vict H. M
VICTOR H. McCAULEY, INDIANA LS# 0336 Nov. 30, 2012
DATE

DECLARATION

I AFFIRM, UNDER THE PENALTIES FOR PERJURY, THAT I HAVE TAKEN RESPONSIBLE CARE TO REDACT, EACH SOCIAL SECURITY NUMBER IN THE DOCUMENT, UNLESS REQUIRED BY LAW.

DECLARANT

VICTOR H. McCAULEY

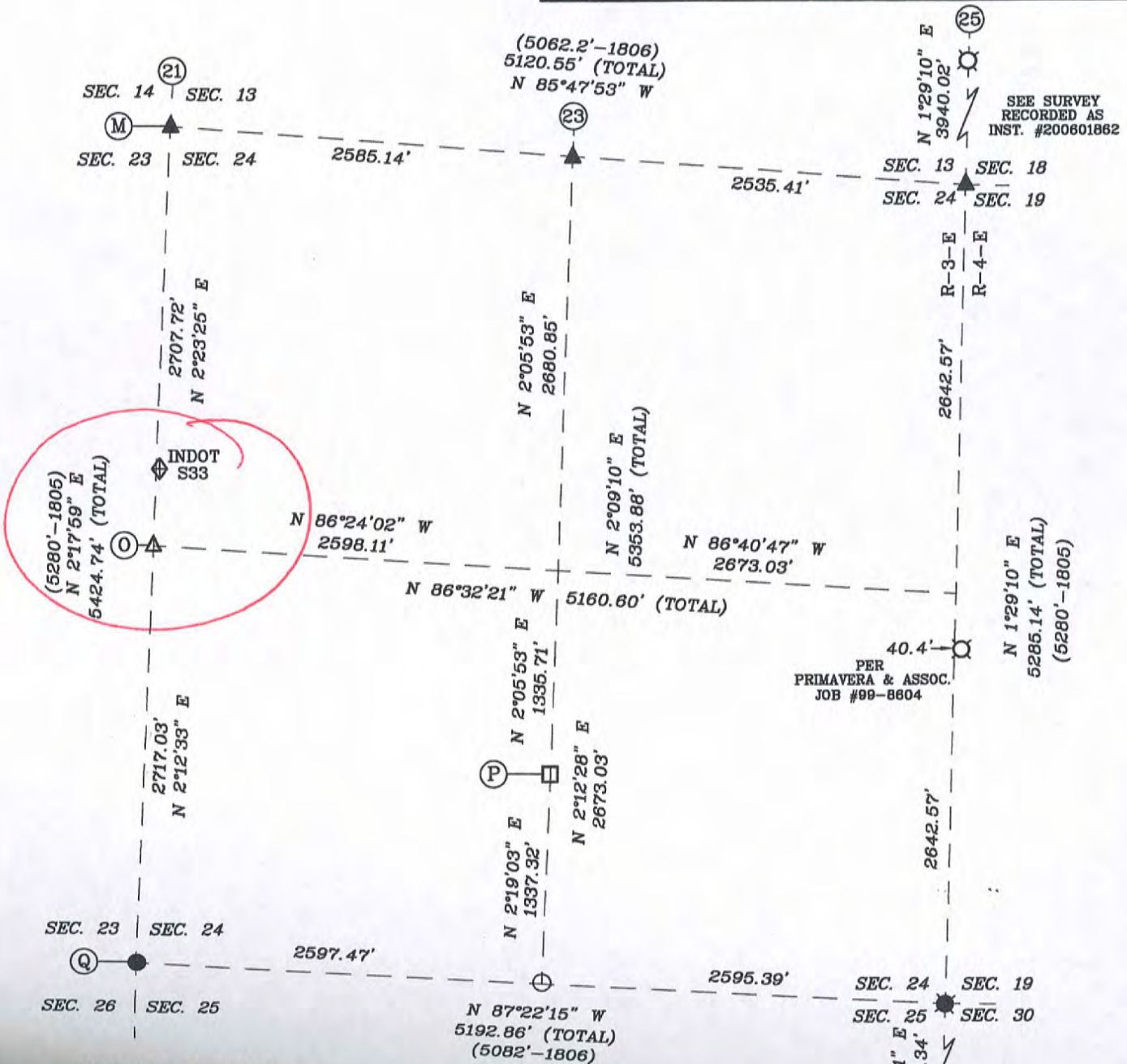
Vict H. M
SIGNATURE OF DECLARANT

PRINTED NAME OF DECLARANT

21-0

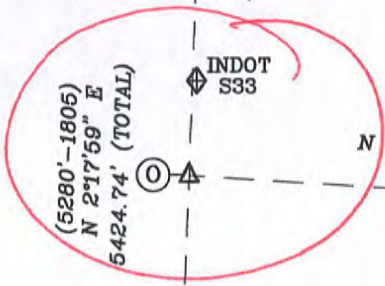
SECTION 24,
TOWNSHIP 3 SOUTH, RANGE 3 EAST,
HARRISON TOWNSHIP,
HARRISON COUNTY, INDIANA

FOR RECORDING INFORMATION



SEE SURVEY
RECORDED AS
INST. #200801862

PER
PRIMAVERA & ASSOC.
JOB #99-8604



SURVEYOR'S CERTIFICATE

I, VICTOR H. McCAULEY, PROFESSIONAL LAND SURVEYOR, REGISTERED BY THE LAWS OF THE STATE OF INDIANA, HEREBY DECLARE THAT I HAVE RECOVERED, RESTORED AND PERPETUATED THE CORNERS SHOWN HEREON IN SECTION 24, TOWNSHIP 3, SOUTH, RANGE 3 EAST, HARRISON TOWNSHIP, HARRISON COUNTY, INDIANA IN ACCORDANCE WITH IAC TITLE 865, THE RULES FOR SURVEYS OF PUBLIC LANDS AND THE STATUTES OF THE STATE OF INDIANA, ALL TO THE BEST OF MY KNOWLEDGE AND BELIEF.

Victor H. M.

VICTOR H. McCAULEY, INDIANA LS# 30336

DATE OF SURVEY: NOV. 26, 2012



LEGEND

- HISTORICAL STONE (SEE REPORT)
- EXISTING PIPE (SEE REPORT)
- ⊙ EXISTING STEEL PIN W/CAP (SEE REPORT)
- STEEL PIN W/3/4" ALUM. DISC STAMPED TO DEPICT CORNER POSITION (SEE REPORT)
- EXISTING STEEL PIN (SEE REPORT)
- △ EXISTING MAG NAIL (SEE REPORT)
- ▲ MAG NAIL SET (SEE REPORT)

0-21

**PLAT OF SURVEY
2012 HARRISON COUNTY PERPETUATION PROJECT**

SITUATED IN SECTION 24, TOWNSHIP 3 SOUTH, RANGE 3 EAST, HARRISON TOWNSHIP, HARRISON, INDIANA.

REPORT OF SURVEY

THIS SURVEY WAS PERFORMED FOR HAROLD KLINSTIVER, HARRISON COUNTY SURVEYOR AS A PERPETUATION PROJECT FOR THE CORNERS IN SECTION 24, TOWNSHIP 3 SOUTH, RANGE 3 EAST, HARRISON TOWNSHIP, HARRISON, INDIANA. THIS SURVEY IS A CONTINUATION OF SEVERAL PRIOR SURVEYS, IN THE SAME VICINITY, BY THIS FIRM.

THE ORIGINAL GOVERNMENT SURVEYS WERE CONDUCTED BY JOSEPH H. SARWELL, DEPUTY SURVEYOR IN JANUARY OF 1806. SUBSEQUENT SURVEYS WERE PERFORMED BY HARRISON COUNTY SURVEYORS AND PRIVATE SURVEYORS AS CITED BELOW. THE ORIGINAL AND SUBSEQUENT SURVEYOR NOTES ARE ON FILE IN THE HARRISON COUNTY SURVEYOR'S OFFICE.

PRIOR TO PERFORMING THIS SURVEY, I REVIEWED THE AVAILABLE ORIGINAL, SUBSEQUENT AND PRIVATE SURVEY NOTES. I RESEARCHED PERTINENT DEEDS AND ADJOINING DEEDS. I CONTACTED ADJOINING LAND OWNERS, CONSULTED WITH THE HARRISON COUNTY SURVEYOR AND OTHER LOCAL SURVEYORS FOR INFORMATION PERTAINING TO THE LOCATION OF CORNERS NEEDED TO PERFORM THIS SURVEY.

THE CORNERS RECOVERED, RESTORED AND PERPETUATED BY THIS SURVEY ARE MARKED IN THE LEGEND. THE BEARING BETWEEN MONUMENTS IS GRID NORTH AS DETERMINED BY GPS SURVEYS.

HORIZONTAL AND VERTICAL CONTROLS FOR THIS SURVEY ARE BASED ON STATIC AND RTK GPS METHODS AND COORDINATES WERE CONSTRAINED TO AN NGS OPUS SOLUTION POSITION, INDIANA STATE PLANE COORDINATE SYSTEM, EAST ZONE, 1983(2012) DATUM, FOR AN ON-SITE GPS BASE STATION. THIS IS A RETRACEMENT "RURAL CLASS SURVEY" AS DEFINED BY 865 IAC 1-12 SECTION 7, PARAGRAPH 3 (e-3) AND THE FIELD WORK IS WITHIN THE "RELATIVE POSITIONAL ACCURACY" SPECIFICATIONS CITED THEREIN.

CONVENTIONAL TERRESTRIAL TRAVERSES WERE USED TO DETERMINE CORNER POSITIONS THAT WERE DEEMED UNSUITABLE FOR GPS OBSERVATIONS. THE POSITION OF MONUMENTS WAS VERIFIED WITH REDUNDANT MEASUREMENTS. ALL TRAVERSES WERE EITHER CLOSED TRAVERSES OR WERE CONTROLLED BY GPS SURVEY METHODS

THIS SURVEY IS BASED ON THE INDIANA STATE PLANE COORDINATE SYSTEM, EAST ZONE, 1983 (2012) DATUM, U.S. SURVEY FOOT. THE DISTANCES SHOWN ARE SEA LEVEL GRID DISTANCES, BASED ON A COMBINED SCALE FACTOR OF 0.99996005. TO CONVERT SURVEY DISTANCES TO HORIZONTAL GROUND LEVEL DISTANCES, DIVIDE THE SURVEY DISTANCES BY THE SCALE FACTOR

EXISTING MONUMENTS RECOVERED FROM PRIOR SURVEYS

M-21 SECTION CORNER COMMON TO SECTIONS 13, 14, 23 & 24, T-3-S, R-3-E

RECOVERED #4 STEEL PIN 0.2' DEEP WITH A MAG NAIL OVER THE MONUMENT IN THE INTERSECTION OF QUARRY ROAD AND CORYDON-RAMSEY ROAD. THE MONUMENT WAS LEFT IN PLACE AS RECOVERED AND A NEW MAG NAIL WAS SET IN A CONCRETE PLUG OVER THE MONUMENT. THIS CORNER HAS A LONG LINAGE AND HAS BEEN USED BY LOCAL SURVEYORS AS THE SECTION CORNER FOR WELL OVER 15 YEARS. THE POSITION OF THE CORNER IS SUPPORTED BY MEASUREMENTS TO ADJACENT MONUMENTS IN ALL CARDINAL DIRECTIONS AND BY VERY OLD AND DISTINCT CULTURAL FEATURES IN THE VICINITY. CORNER ACCESSORIES ESTABLISHED:
UTILITY POLE (OHE), S50°E, 50.56' TO A MAG NAIL UP 1.0' ON SW SIDE W/HCSS
SECURITY FENCE CORNER, S43°W, 48.80'
UTILITY POLE (OHT), N64°W, 73.30' TO A MAG NAIL UP 1.4' ON SE SIDE W/HCSS
NW END 12" RCP, N33°E, 51.71'

M-23 QUARTER SECTION CORNER TO SECTIONS 13 & 24, T-3-S, R-3-E

RECOVERED RAILROAD SPIKE 0.4' DEEP WITH A MASONRY NAIL OVER THE MONUMENT IN THE INTERSECTION OF QUARRY ROAD AND CLINE ROAD. THE MONUMENT WAS LEFT IN PLACE AS RECOVERED AND A NEW MAG NAIL WAS SET IN A CONCRETE PLUG OVER THE MONUMENT. THIS CORNER HAS A LONG LINAGE AND HAS BEEN USED BY LOCAL SURVEYORS AS THE QUARTER CORNER FOR WELL OVER 15 YEARS. THE POSITION OF THE CORNER IS SUPPORTED BY MEASUREMENTS TO ADJACENT MONUMENTS IN ALL CARDINAL DIRECTIONS AND BY VERY OLD AND DISTINCT CULTURAL FEATURES IN THE VICINITY. CORNER ACCESSORIES ESTABLISHED:
SW OVERHEAD SIGN BOLT, N52°E, 62.80'
FIRE HYDRANT, N37°W, 46.98'
UTILITY POLE, S41°W, 41.80' TO BOTTOM NAIL OF HCSS

THE ORIGINAL GOVERNMENT SURVEYS WERE CONDUCTED BY JOSEPH H. SARWELL, DEPUTY SURVEYOR IN JANUARY OF 1806. SUBSEQUENT SURVEYS WERE PERFORMED BY HARRISON COUNTY SURVEYORS AND PRIVATE SURVEYORS AS CITED BELOW. THE ORIGINAL AND SUBSEQUENT SURVEYOR NOTES ARE ON FILE IN THE HARRISON COUNTY SURVEYOR'S OFFICE.

PRIOR TO PERFORMING THIS SURVEY, I REVIEWED THE AVAILABLE ORIGINAL, SUBSEQUENT AND PRIVATE SURVEY NOTES. I RESEARCHED PERTINENT DEEDS AND ADJOINING DEEDS. I CONTACTED ADJOINING LAND OWNERS, CONSULTED WITH THE HARRISON COUNTY SURVEYOR AND OTHER LOCAL SURVEYORS FOR INFORMATION PERTAINING TO THE LOCATION OF CORNERS NEEDED TO PERFORM THIS SURVEY.

THE CORNERS RECOVERED, RESTORED AND PERPETUATED BY THIS SURVEY ARE MARKED IN THE LEGEND. THE BEARING BETWEEN MONUMENTS IS GRID NORTH AS DETERMINED BY GPS SURVEYS.

HORIZONTAL AND VERTICAL CONTROLS FOR THIS SURVEY ARE BASED ON STATIC AND RTK GPS METHODS AND COORDINATES WERE CONSTRAINED TO AN NGS OPUS SOLUTION POSITION, INDIANA STATE PLANE COORDINATE SYSTEM, EAST ZONE, 1983(2012) DATUM, FOR AN ON-SITE GPS BASE STATION. THIS IS A RETRACEMENT "RURAL CLASS SURVEY" AS DEFINED BY 865 IAC 1-12 SECTION 7, PARAGRAPH 3 (e-3) AND THE FIELD WORK IS WITHIN THE "RELATIVE POSITIONAL ACCURACY" SPECIFICATIONS CITED THEREIN.

CONVENTIONAL TERRESTRIAL TRAVERSES WERE USED TO DETERMINE CORNER POSITIONS THAT WERE DEEMED UNSUITABLE FOR GPS OBSERVATIONS. THE POSITION OF MONUMENTS WAS VERIFIED WITH REDUNDANT MEASUREMENTS. ALL TRAVERSES WERE EITHER CLOSED TRAVERSES OR WERE CONTROLLED BY GPS SURVEY METHODS

THIS SURVEY IS BASED ON THE INDIANA STATE PLANE COORDINATE SYSTEM, EAST ZONE, 1983 (2012) DATUM, U.S. SURVEY FOOT. THE DISTANCES SHOWN ARE SEA LEVEL GRID DISTANCES, BASED ON A COMBINED SCALE FACTOR OF 0.99996005. TO CONVERT SURVEY DISTANCES TO HORIZONTAL GROUND LEVEL DISTANCES, DIVIDE THE SURVEY DISTANCES BY THE SCALE FACTOR

EXISTING MONUMENTS RECOVERED FROM PRIOR SURVEYS

M-21 SECTION CORNER COMMON TO SECTIONS 13, 14, 23 & 24, T-3-S, R-3-E

RECOVERED #4 STEEL PIN 0.2' DEEP WITH A MAG NAIL OVER THE MONUMENT IN THE INTERSECTION OF QUARRY ROAD AND CORYDON-RAMSEY ROAD. THE MONUMENT WAS LEFT IN PLACE AS RECOVERED AND A NEW MAG NAIL WAS SET IN A CONCRETE PLUG OVER THE MONUMENT. THIS CORNER HAS A LONG LINAGE AND HAS BEEN USED BY LOCAL SURVEYORS AS THE SECTION CORNER FOR WELL OVER 15 YEARS. THE POSITION OF THE CORNER IS SUPPORTED BY MEASUREMENTS TO ADJACENT MONUMENTS IN ALL CARDINAL DIRECTIONS AND BY VERY OLD AND DISTINCT CULTURAL FEATURES IN THE VICINITY. CORNER ACCESSORIES ESTABLISHED:
UTILITY POLE (OHE), S50°E, 50.56' TO A MAG NAIL UP 1.0' ON SW SIDE W/HCSS
SECURITY FENCE CORNER, S43°W, 48.80'
UTILITY POLE (OHT), N64°W, 73.30' TO A MAG NAIL UP 1.4' ON SE SIDE W/HCSS
NW END 12" RCP, N33°E, 51.71'

M-23 QUARTER SECTION CORNER TO SECTIONS 13 & 24, T-3-S, R-3-E

RECOVERED RAILROAD SPIKE 0.4' DEEP WITH A MASONRY NAIL OVER THE MONUMENT IN THE INTERSECTION OF QUARRY ROAD AND CLINE ROAD. THE MONUMENT WAS LEFT IN PLACE AS RECOVERED AND A NEW MAG NAIL WAS SET IN A CONCRETE PLUG OVER THE MONUMENT. THIS CORNER HAS A LONG LINAGE AND HAS BEEN USED BY LOCAL SURVEYORS AS THE QUARTER CORNER FOR WELL OVER 15 YEARS. THE POSITION OF THE CORNER IS SUPPORTED BY MEASUREMENTS TO ADJACENT MONUMENTS IN ALL CARDINAL DIRECTIONS AND BY VERY OLD AND DISTINCT CULTURAL FEATURES IN THE VICINITY. CORNER ACCESSORIES ESTABLISHED:
SW OVERHEAD SIGN BOLT, N52°E, 62.80'
FIRE HYDRANT, N37°W, 46.98'
UTILITY POLE, S41°W, 41.80' TO BOTTOM NAIL OF HCSS

Job #20077-24

0-21

**PLAT OF SURVEY
2012 HARRISON COUNTY PERPETUATION PROJECT**

SITUATED IN SECTION 24, TOWNSHIP 3 SOUTH, RANGE 3 EAST, HARRISON TOWNSHIP, HARRISON, INDIANA.

EXISTING MONUMENTS RECOVERED FROM PRIOR SURVEYS CONTINUED

O-21 QUARTER CORNER TO SECTIONS 23 & 24, T-3-S, R-3-E

RECOVERED STAINLESS SPIKE IN THE S-BOUND LANES OF CORYDON-RAMSEY ROAD. 6' WEST AND 5' NORTH OF THE INTERSECTION OF CORYDON-RAMSEY ROAD AND THE EAST ENTRANCE TO HARRISON COUNTY HOSPITAL. THE MONUMENT WAS LEFT IN PLACE AS RECOVERED. THIS CORNER POSITION WAS RESTORED PRIOR TO CONSTRUCTION OF THE HOSPITAL CIRCA 2002. SEE SURVEYS RECORDED AS INSTRUMENTS NUMBERS 200305318, 200508712 & 200508869. THE POSITION OF THE CORNER IS SUPPORTED BY MEASUREMENTS TO ADJACENT MONUMENTS IN ALL CARDINAL DIRECTIONS AND BY VERY OLD AND DISTINCT CULTURAL FEATURES IN THE VICINITY. CORNER ACCESSORIES ESTABLISHED:

- HCSS ON GUARDRAIL, N41°W, 52.85'
- HCSS ON GUARDRAIL, S50°E, 72.40'
- STOP SIGN POST, N60°E, 63.91'
- HOSPITAL SIGN EAST LEG, S12°W, 91.92'

O-23 CENTER QUARTER CORNER IN SECTION 24, T-3-S, R-3-E

CALCULATED CORNER POSITION PER PRIOR SURVEYS BY OTHERS. SEE SURVEY BOOK 3, PAGE 466 AND INSTRUMENT NUMBER 98056871. THE CALCULATED CORNER IS S11°W, 1.93 FEET FROM A ROAD NAIL SET OVER AN EXISTING MAGNETIC READING. NO ACCESSORIES ESTABLISHED THIS SURVEY.

P-23 CENTERSOUTH SIXTEENTH CORNER IN SECTION 24, T-3-S, R-3-E

RECOVERED PINNACLE LIMESTONE 0.2' BY 0.1' PROJECTING 0.3' WITH YELLOW HARRISON COUNTY SURVEY SIGN, 0.5' SOUTH. THE MONUMENT WAS LEFT IN PLACE AS RECOVERED. THE STONE IS IN A VERY OLD AND PROMINENT N-S CULTURAL LINE. THE POSITION OF THE CORNER IS SUPPORTED BY MEASUREMENTS TO ADJACENT MONUMENTS IN ALL CARDINAL DIRECTIONS AND BY VERY OLD AND DISTINCT CULTURAL FEATURES IN THE VICINITY. SEE SURVEY BOOK 3, PAGE 466. CORNER ACCESSORIES ESTABLISHED:

- FENCE CORNER, SOUTH 0.7' TO A MAG NAIL UP 0.6' ON E SIDE
- SASSAFRAS 12", N29°W, 3.28' TO A MAG NAIL UP 0.6' ON SW SIDE
- SW STEEL GAS VALVE GUARD POST, S85°E, 22.11'

Q-21 SECTION CORNER TO SECTIONS 23, 24, 25 & 26, T-3-S, R-3-E

RECOVERED 1" STEEL PIN 0.3' DEEP AT NE CORNER OF YARD AT 2010 KENNEDY DRIVE, PER OLD RECOVERY NOTES. THE MONUMENT WAS LEFT IN PLACE AS RECOVERED. THE MONUMENT IS IN A VERY OLD AND PROMINENT N-S CULTURAL LINE. THE POSITION OF THE CORNER IS SUPPORTED BY MEASUREMENTS TO ADJACENT MONUMENTS IN ALL CARDINAL DIRECTIONS AND BY VERY OLD AND DISTINCT CULTURAL FEATURES IN THE VICINITY. CORNER ACCESSORIES ESTABLISHED:

- W. OAK 29", S57°E, 3.41' TO A MAG NAIL UP 0.6' ON NE SIDE
- W. OAK 17", S13°E, 45.47' TO A MAG NAIL UP 0.6' ON W SIDE
- UTILITY POLE, N89°W, 44.36' TO MAG NAIL UP 0.6' ON S SIDE
- NE CORNER HOUSE, S75°E, 54.65'

Q-23 QUARTER CORNER TO SECTIONS 24 & 25, T-3-S, R-3-E

RECOVERED 1' CRIMPED TOP PIPE 0.7' DEEP AT THE REAR OF THE COMMERCIAL BUILDING AT 1995 EDSSEL LANE. THE MONUMENT WAS LEFT IN PLACE AS RECOVERED. THE MONUMENT IS IN A VERY OLD AND PROMINENT N-S CULTURAL LINE. THE POSITION OF THE CORNER IS SUPPORTED BY MEASUREMENTS TO ADJACENT MONUMENTS IN ALL CARDINAL DIRECTIONS AND BY VERY OLD AND DISTINCT CULTURAL FEATURES IN THE VICINITY. CORNER ACCESSORIES ESTABLISHED:

- CARSONITE POST, NORTH, 0.6'
- HICKORY 18", N55°W, 7.50' TO A MAG NAIL UP 0.6' ON NE SIDE
- HACKBERRY 9", N64°E, 4.54' TO A MAG NAIL UP 4.54' ON NW SIDE
- POST, S87°W, 0.6'
- NW CORNER BUILDING, S55°E, 17.95'

CORNERS RESTORED

M-25 EAST SECTION CORNER TO SECTIONS 13 & 24, T-3-S, R-3-E

RESTORED THE SECTION CORNER ON THE RANGE LINE FROM MONUMENTS RECOVERED TO THE NORTH, SOUTH AND WEST. SET A MAGNETIC MASONRY NAIL IN THE SOUTH BOUND LANES OF STATE HIGHWAY 135. THE POSITION OF THE CORNER IS SUPPORTED BY MEASUREMENTS TO ADJACENT MONUMENTS TO THE NORTH, SOUTH AND WEST, AND BY VERY OLD AND DISTINCT CULTURAL FEATURES IN THE VICINITY. CORNER ACCESSORIES ESTABLISHED:

200508712 & 200508869. THE POSITION OF THE CORNER IS SUPPORTED BY MEASUREMENTS TO ADJACENT MONUMENTS IN ALL CARDINAL DIRECTIONS AND BY VERY OLD AND DISTINCT CULTURAL FEATURES IN THE VICINITY. CORNER ACCESSORIES ESTABLISHED:

HCSS ON GUARDRAIL, N41°W, 52.85'
HCSS ON GUARDRAIL, S50°E, 72.40'
STOP SIGN POST, N60°E, 63.91'
HOSPITAL SIGN EAST LEG, S12°W, 91.92'

O-23 CENTER QUARTER CORNER IN SECTION 24, T-3-S, R-3-E

CALCULATED CORNER POSITION PER PRIOR SURVEYS BY OTHERS. SEE SURVEY BOOK 3, PAGE 466 AND INSTRUMENT NUMBER 98056871. THE CALCULATED CORNER IS S11°W, 1.93 FEET FROM A ROAD NAIL SET OVER AN EXISTING MAGNETIC READING. NO ACCESSORIES ESTABLISHED THIS SURVEY.

P-23 CENTERSOUTH SIXTEENTH CORNER IN SECTION 24, T-3-S, R-3-E

RECOVERED PINNACLE LIMESTONE 0.2' BY 0.1' PROJECTING 0.3' WITH YELLOW HARRISON COUNTY SURVEY SIGN, 0.5' SOUTH. THE MONUMENT WAS LEFT IN PLACE AS RECOVERED. THE STONE IS IN A VERY OLD AND PROMINENT N-S CULTURAL LINE. THE POSITION OF THE CORNER IS SUPPORTED BY MEASUREMENTS TO ADJACENT MONUMENTS IN ALL CARDINAL DIRECTIONS AND BY VERY OLD AND DISTINCT CULTURAL FEATURES IN THE VICINITY. SEE SURVEY BOOK 3, PAGE 466. CORNER ACCESSORIES ESTABLISHED:
FENCE CORNER, SOUTH 0.7' TO A MAG NAIL UP 0.6' ON E SIDE
SASSAFRAS 12", N29°W, 3.28' TO A MAG NAIL UP 0.6' ON SW SIDE
SW STEEL GAS VALVE GUARD POST, S85°E, 22.11'

Q-21 SECTION CORNER TO SECTIONS 23, 24, 25 & 26, T-3-S, R-3-E

RECOVERED 1" STEEL PIN 0.3' DEEP AT NE CORNER OF YARD AT 2010 KENNEDY DRIVE, PER OLD RECOVERY NOTES. THE MONUMENT WAS LEFT IN PLACE AS RECOVERED. THE MONUMENT IS IN A VERY OLD AND PROMINENT N-S CULTURAL LINE. THE POSITION OF THE CORNER IS SUPPORTED BY MEASUREMENTS TO ADJACENT MONUMENTS IN ALL CARDINAL DIRECTIONS AND BY VERY OLD AND DISTINCT CULTURAL FEATURES IN THE VICINITY. CORNER ACCESSORIES ESTABLISHED:

W. OAK 29", S57°E, 3.41' TO A MAG NAIL UP 0.6' ON NE SIDE
W. OAK 17", S13°E, 45.47' TO A MAG NAIL UP 0.6' ON W SIDE
UTILITY POLE, N89°W, 44.36' TO MAG NAIL UP 0.6' ON S SIDE
NE CORNER HOUSE, S75°E, 54.65'

Q-23 QUARTER CORNER TO SECTIONS 24 & 25, T-3-S, R-3-E

RECOVERED 1' CRIMPED TOP PIPE 0.7' DEEP AT THE REAR OF THE COMMERCIAL BUILDING AT 1995 EDSSEL LANE. THE MONUMENT WAS LEFT IN PLACE AS RECOVERED. THE MONUMENT IS IN A VERY OLD AND PROMINENT N-S CULTURAL LINE. THE POSITION OF THE CORNER IS SUPPORTED BY MEASUREMENTS TO ADJACENT MONUMENTS IN ALL CARDINAL DIRECTIONS AND BY VERY OLD AND DISTINCT CULTURAL FEATURES IN THE VICINITY. CORNER ACCESSORIES ESTABLISHED:

CARSONITE POST, NORTH, 0.6'
HICKORY 18", N55°W, 7.50' TO A MAG NAIL UP 0.6' ON NE SIDE
HACKBERRY 9", N64°E, 4.54' TO A MAG NAIL UP 4.54' ON NW SIDE
POST, S87°W, 0.6'
NW CORNER BUILDING, S55°E, 17.95'

CORNERS RESTORED

M-25 EAST SECTION CORNER TO SECTIONS 13 & 24, T-3-S, R-3-E

RESTORED THE SECTION CORNER ON THE RANGE LINE FROM MONUMENTS RECOVERED TO THE NORTH, SOUTH AND WEST. SET A MAGNETIC MASONRY NAIL IN THE SOUTH BOUND LANES OF STATE HIGHWAY 135. THE POSITION OF THE CORNER IS SUPPORTED BY MEASUREMENTS TO ADJACENT MONUMENTS TO THE NORTH, SOUTH AND WEST, AND BY VERY OLD AND DISTINCT CULTURAL FEATURES IN THE VICINITY. CORNER ACCESSORIES ESTABLISHED:

WEST ANCHOR BOLT STEEL TRAFFIC SIGNAL POLE, N83°E, 81.35'
WEST ANCHOR BOLT STEEL TRAFFIC SIGNAL POLE, S47°E, 110.33'
EAST ANCHOR BOLT STEEL TRAFFIC SIGNAL POLE, S50°W, 94.17'
EAST ANCHOR BOLT STEEL TRAFFIC SIGNAL POLE, N69°W, 74.00'
UTILITY POLE WITH HCSS (BOTTOM NAIL), N78°W, 83.65'
CONC. ROW MONUMENT, N57°W, 100.27'

0-21

**PLAT OF SURVEY
2012 HARRISON COUNTY PERPETUATION PROJECT**

SITUATED IN SECTION 24, TOWNSHIP 3 SOUTH, RANGE 3 EAST, HARRISON TOWNSHIP, HARRISON, INDIANA.

CORNERS RESTORED CONTINUED

Q-25 EAST SECTION CORNER TO SECTIONS 24 & 25, T-3-S, R-3-E

RESTORED THE SECTION CORNER ON THE RANGE LINE FROM MONUMENTS RECOVERED TO THE NORTH, SOUTH AND WEST. SET A #5 BY 30" PIN 1.0' DEEP IN CULTIVATED FIELD. SET WITNESS MONUMENT W/ CARSONITE POST ON THE RANGE LINE, 120.00' NORTH OF THE SECTION CORNER. NO OTHER WITNESS OBJECTS AVAILABLE.

S33 INDOT MONUMENT

RECOVERED AN INDOT SURVEY DISK IN THE NORTHEAST ABUTMENT OF THE CORYDON-RAMSEY ROAD INTERSTATE 64 OVERPASS BRIDGE.

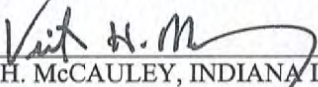
FOR ADDITIONAL CORNER INFORMATION, SEE THE INDIVIDUAL CORNER RECORDS IN THE HARRISON COUNTY SURVEYORS OFFICE.

THIS REPORT OF SURVEY IS NOT COMPLETE WITHOUT THE SURVEY PLAT.

SURVEYOR'S AFFIDAVIT

I, VICTOR H. McCAULEY, PROFESSIONAL LAND SURVEYOR, AND REGISTERED BY THE LAWS OF THE STATE OF INDIANA, HEREBY CERTIFY THAT I HAVE SURVEY AND SUBDIVIDED THE LAND IN SECTION 24, TOWNSHIP 3 SOUTH, RANGE 3 EAST, HARRISON TOWNSHIP, HARRISON COUNTY, INDIANA, IN ACCORDANCE WITH IAC TITLE 865 AND THE RULES FOR SURVEYS OF PUBLIC LANDS AND THE STATUES OF THE STATE OF INDIANA, ALL TO THE BEST OF MY KNOWLEDGE AND BELIEF.

THE PLAT MAP AND SURVEY NOTES ARE AN ACCURATE REPRESENTATION OF THE CORNERS RECOVERED AND RESTORED DURING THIS SURVEY. LAST DATE OF FIELD WORK WAS NOVEMBER 26, 2012.

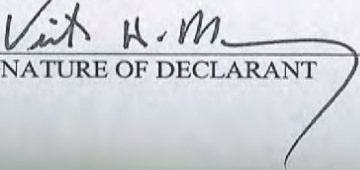

VICTOR H. McCAULEY, INDIANA LS# 0336

Nov. 30, 2012
DATE

DECLARATION

I AFFIRM, UNDER THE PENALTIES FOR PERJURY, THAT I HAVE TAKEN RESPONSIBLE CARE TO REDACT, EACH SOCIAL SECURITY NUMBER IN THE DOCUMENT, UNLESS REQUIRED BY LAW.

DECLARANT


SIGNATURE OF DECLARANT

VICTOR H. McCAULEY

PRINTED NAME OF DECLARANT

21-0

Harrison Co. No. O-21

T 3 S, R 3 E 2nd Prin. Mer. County Harrison State Indiana

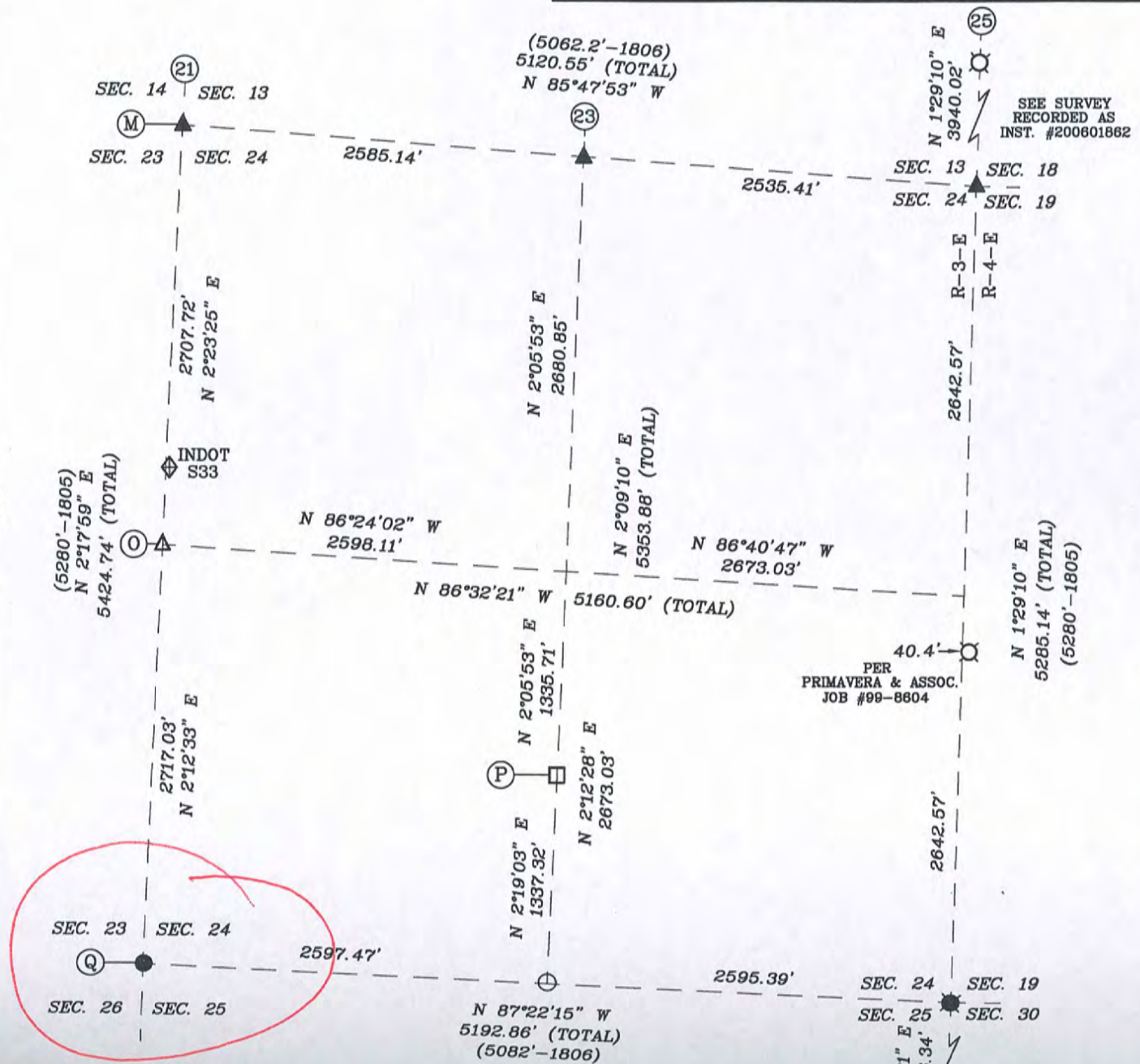
Quarter Corner common to Sections 23 and 24

EXISTING SURVEYS	
No Original Government Survey Evidence Recovered	Picture
<p>See surveys recorded as Instrument Numbers 200305318, 200508712 and 200508869 of the Harrison County, Indiana records.</p>	<p>N/A</p>
Subsequent Corner Restoration	Evidence of Subsequent Corner Restoration Found
<p>Year surveyed _____ By _____ Where filed or recorded _____ Monument _____ <small>(Original, concrete post, iron rod, etc...)</small></p> <p style="text-align: center;">Bearing Trees, Reference Objects</p> <p>Species _____ Diameter _____ Bearing _____ Distance _____</p>	<p>Year of search <u>2012</u> By <u>VHM</u> <u>Recovered stainless spike in the S-bound lanes of Corydon-Ramsey Road, 6' West and 5' North of the intersection of Corydon-Ramsey Road and the East entrance to Harrison County Hospital.</u></p>
<div style="border: 1px solid black; padding: 5px; width: fit-content; margin-bottom: 10px;"> </div> <p>Signature <u>Vick H. M...</u> Date: <u>November 26, 2012</u></p>	<p style="text-align: center;">Perpetuation Record</p> <p>Monument and accessories established. Include brief description of area. <u>The monument was left in place as recovered. This corner position was restored prior to construction of the hospital circa 2002. See surveys recorded as Instruments Numbers 200305318, 200508712 and 200508869. The position of the corner is supported by measurements to adjacent monuments in all cardinal directions and by very old and distinct cultural features in the vicinity. Corner accessories established:</u></p> <p><u>Harrison County Surveyor's sign on guardrail, N 41° W, 52.85'</u> <u>Harrison County Surveyor's sign on guardrail, S 50° E, 72.40'</u> <u>Stop Sign Post, N 60° E, 63.91'</u> <u>Hospital Sign East Leg, S 12° W, 91.92'</u></p> <p>N: 1089885.03 { INDOT E: 190752.36 { S33 N: 1089386.53 { Corner E: 190704.77 {</p> <p style="text-align: right;"><i>Harold ZK Luntian 2012</i></p>

SECTION 24,
TOWNSHIP 3 SOUTH, RANGE 3 EAST,
HARRISON TOWNSHIP,
HARRISON COUNTY, INDIANA

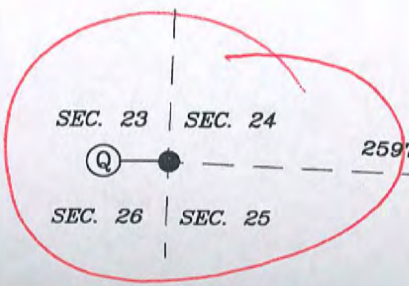
FOR RECORDING INFORMATION

21-Q



SEE SURVEY
RECORDED AS
INST. #200601862

PER
PRIMAVERA & ASSOC.
JOB #99-8604



SURVEYOR'S CERTIFICATE

I, VICTOR H. MCCAULEY, PROFESSIONAL LAND SURVEYOR, REGISTERED BY THE LAWS OF THE STATE OF INDIANA, HEREBY DECLARE THAT I HAVE RECOVERED, RESTORED AND PERPETUATED THE CORNERS SHOWN HEREON IN SECTION 24, TOWNSHIP 3, SOUTH, RANGE 3 EAST, HARRISON TOWNSHIP, HARRISON COUNTY, INDIANA IN ACCORDANCE WITH IAC TITLE 865, THE RULES FOR SURVEYS OF PUBLIC LANDS AND THE STATUTES OF THE STATE OF INDIANA, ALL TO THE BEST OF MY KNOWLEDGE AND BELIEF.

Vict H. M

VICTOR H. MCCAULEY, INDIANA LS# 30336



LEGEND

- HISTORICAL STONE (SEE REPORT)
- EXISTING PIPE (SEE REPORT)
- ⊗ EXISTING STEEL PIN W/CAP (SEE REPORT)
- ⊙ STEEL PIN W/3/4" ALUM. DISC STAMPED TO DEPICT CORNER POSITION (SEE REPORT)
- EXISTING STEEL PIN (SEE REPORT)
- ▲ EXISTING MAG NAIL (SEE REPORT)
- ▲ MAG NAIL SET (SEE REPORT)
- ▲

Q-21

**PLAT OF SURVEY
2012 HARRISON COUNTY PERPETUATION PROJECT**

SITUATED IN SECTION 24, TOWNSHIP 3 SOUTH, RANGE 3 EAST, HARRISON TOWNSHIP, HARRISON, INDIANA.

REPORT OF SURVEY

THIS SURVEY WAS PERFORMED FOR HAROLD KLINSTIVER, HARRISON COUNTY SURVEYOR AS A PERPETUATION PROJECT FOR THE CORNERS IN SECTION 24, TOWNSHIP 3 SOUTH, RANGE 3 EAST, HARRISON TOWNSHIP, HARRISON, INDIANA. THIS SURVEY IS A CONTINUATION OF SEVERAL PRIOR SURVEYS, IN THE SAME VICINITY, BY THIS FIRM.

THE ORIGINAL GOVERNMENT SURVEYS WERE CONDUCTED BY JOSEPH H. SARWELL, DEPUTY SURVEYOR IN JANUARY OF 1806. SUBSEQUENT SURVEYS WERE PERFORMED BY HARRISON COUNTY SURVEYORS AND PRIVATE SURVEYORS AS CITED BELOW. THE ORIGINAL AND SUBSEQUENT SURVEYOR NOTES ARE ON FILE IN THE HARRISON COUNTY SURVEYOR'S OFFICE.

PRIOR TO PERFORMING THIS SURVEY, I REVIEWED THE AVAILABLE ORIGINAL, SUBSEQUENT AND PRIVATE SURVEY NOTES. I RESEARCHED PERTINENT DEEDS AND ADJOINING DEEDS. I CONTACTED ADJOINING LAND OWNERS, CONSULTED WITH THE HARRISON COUNTY SURVEYOR AND OTHER LOCAL SURVEYORS FOR INFORMATION PERTAINING TO THE LOCATION OF CORNERS NEEDED TO PERFORM THIS SURVEY.

THE CORNERS RECOVERED, RESTORED AND PERPETUATED BY THIS SURVEY ARE MARKED IN THE LEGEND. THE BEARING BETWEEN MONUMENTS IS GRID NORTH AS DETERMINED BY GPS SURVEYS.

HORIZONTAL AND VERTICAL CONTROLS FOR THIS SURVEY ARE BASED ON STATIC AND RTK GPS METHODS AND COORDINATES WERE CONSTRAINED TO AN NGS OPUS SOLUTION POSITION, INDIANA STATE PLANE COORDINATE SYSTEM, EAST ZONE, 1983(2012) DATUM, FOR AN ON-SITE GPS BASE STATION. THIS IS A RETRACEMENT "RURAL CLASS SURVEY" AS DEFINED BY 865 IAC 1-12 SECTION 7, PARAGRAPH 3 (e-3) AND THE FIELD WORK IS WITHIN THE "RELATIVE POSITIONAL ACCURACY" SPECIFICATIONS CITED THEREIN.

CONVENTIONAL TERRESTRIAL TRAVERSES WERE USED TO DETERMINE CORNER POSITIONS THAT WERE DEEMED UNSUITABLE FOR GPS OBSERVATIONS. THE POSITION OF MONUMENTS WAS VERIFIED WITH REDUNDANT MEASUREMENTS. ALL TRAVERSES WERE EITHER CLOSED TRAVERSES OR WERE CONTROLLED BY GPS SURVEY METHODS

THIS SURVEY IS BASED ON THE INDIANA STATE PLANE COORDINATE SYSTEM, EAST ZONE, 1983 (2012) DATUM, U.S. SURVEY FOOT. THE DISTANCES SHOWN ARE SEA LEVEL GRID DISTANCES, BASED ON A COMBINED SCALE FACTOR OF 0.99996005. TO CONVERT SURVEY DISTANCES TO HORIZONTAL GROUND LEVEL DISTANCES, DIVIDE THE SURVEY DISTANCES BY THE SCALE FACTOR

EXISTING MONUMENTS RECOVERED FROM PRIOR SURVEYS

M-21 SECTION CORNER COMMON TO SECTIONS 13, 14, 23 & 24, T-3-S, R-3-E

RECOVERED #4 STEEL PIN 0.2' DEEP WITH A MAG NAIL OVER THE MONUMENT IN THE INTERSECTION OF QUARRY ROAD AND CORYDON-RAMSEY ROAD. THE MONUMENT WAS LEFT IN PLACE AS RECOVERED AND A NEW MAG NAIL WAS SET IN A CONCRETE PLUG OVER THE MONUMENT. THIS CORNER HAS A LONG LINAGE AND HAS BEEN USED BY LOCAL SURVEYORS AS THE SECTION CORNER FOR WELL OVER 15 YEARS. THE POSITION OF THE CORNER IS SUPPORTED BY MEASUREMENTS TO ADJACENT MONUMENTS IN ALL CARDINAL DIRECTIONS AND BY VERY OLD AND DISTINCT CULTURAL FEATURES IN THE VICINITY. CORNER ACCESSORIES ESTABLISHED: UTILITY POLE (OHE), S50°E, 50.56' TO A MAG NAIL UP 1.0' ON SW SIDE W/HCSS
SECURITY FENCE CORNER, S43°W, 48.80'
UTILITY POLE (OHT), N64°W, 73.30' TO A MAG NAIL UP 1.4' ON SE SIDE W/HCSS
NW END 12" RCP, N33°E, 51.71'

M-23 QUARTER SECTION CORNER TO SECTIONS 13 & 24, T-3-S, R-3-E

RECOVERED RAILROAD SPIKE 0.4' DEEP WITH A MASONRY NAIL OVER THE MONUMENT IN THE INTERSECTION OF QUARRY ROAD AND CLINE ROAD. THE MONUMENT WAS LEFT IN PLACE AS RECOVERED AND A NEW MAG NAIL WAS SET IN A CONCRETE PLUG OVER THE MONUMENT. THIS CORNER HAS A LONG LINAGE AND HAS BEEN USED BY LOCAL SURVEYORS AS THE QUARTER CORNER FOR WELL OVER 15 YEARS. THE POSITION OF THE CORNER IS SUPPORTED BY MEASUREMENTS TO ADJACENT MONUMENTS IN ALL CARDINAL DIRECTIONS AND BY VERY OLD AND DISTINCT CULTURAL FEATURES IN THE VICINITY. CORNER ACCESSORIES ESTABLISHED: SW OVERHEAD SIGN BOLT, N52°E, 62.80'
FIRE HYDRANT, N37°W, 46.98'
UTILITY POLE, S41°W, 41.80' TO BOTTOM NAIL OF HCSS

THE ORIGINAL GOVERNMENT SURVEYS WERE CONDUCTED BY JOSEPH H. SARWELL, DEPUTY SURVEYOR IN JANUARY OF 1806. SUBSEQUENT SURVEYS WERE PERFORMED BY HARRISON COUNTY SURVEYORS AND PRIVATE SURVEYORS AS CITED BELOW. THE ORIGINAL AND SUBSEQUENT SURVEYOR NOTES ARE ON FILE IN THE HARRISON COUNTY SURVEYOR'S OFFICE.

PRIOR TO PERFORMING THIS SURVEY, I REVIEWED THE AVAILABLE ORIGINAL, SUBSEQUENT AND PRIVATE SURVEY NOTES. I RESEARCHED PERTINENT DEEDS AND ADJOINING DEEDS. I CONTACTED ADJOINING LAND OWNERS, CONSULTED WITH THE HARRISON COUNTY SURVEYOR AND OTHER LOCAL SURVEYORS FOR INFORMATION PERTAINING TO THE LOCATION OF CORNERS NEEDED TO PERFORM THIS SURVEY.

THE CORNERS RECOVERED, RESTORED AND PERPETUATED BY THIS SURVEY ARE MARKED IN THE LEGEND. THE BEARING BETWEEN MONUMENTS IS GRID NORTH AS DETERMINED BY GPS SURVEYS.

HORIZONTAL AND VERTICAL CONTROLS FOR THIS SURVEY ARE BASED ON STATIC AND RTK GPS METHODS AND COORDINATES WERE CONSTRAINED TO AN NGS OPUS SOLUTION POSITION, INDIANA STATE PLANE COORDINATE SYSTEM, EAST ZONE, 1983(2012) DATUM, FOR AN ON-SITE GPS BASE STATION. THIS IS A RETRACEMENT "RURAL CLASS SURVEY" AS DEFINED BY 865 IAC 1-12 SECTION 7, PARAGRAPH 3 (e-3) AND THE FIELD WORK IS WITHIN THE "RELATIVE POSITIONAL ACCURACY" SPECIFICATIONS CITED THEREIN.

CONVENTIONAL TERRESTRIAL TRAVERSES WERE USED TO DETERMINE CORNER POSITIONS THAT WERE DEEMED UNSUITABLE FOR GPS OBSERVATIONS. THE POSITION OF MONUMENTS WAS VERIFIED WITH REDUNDANT MEASUREMENTS. ALL TRAVERSES WERE EITHER CLOSED TRAVERSES OR WERE CONTROLLED BY GPS SURVEY METHODS

THIS SURVEY IS BASED ON THE INDIANA STATE PLANE COORDINATE SYSTEM, EAST ZONE, 1983 (2012) DATUM, U.S. SURVEY FOOT. THE DISTANCES SHOWN ARE SEA LEVEL GRID DISTANCES, BASED ON A COMBINED SCALE FACTOR OF 0.99996005. TO CONVERT SURVEY DISTANCES TO HORIZONTAL GROUND LEVEL DISTANCES, DIVIDE THE SURVEY DISTANCES BY THE SCALE FACTOR

EXISTING MONUMENTS RECOVERED FROM PRIOR SURVEYS

M-21 SECTION CORNER COMMON TO SECTIONS 13, 14, 23 & 24, T-3-S, R-3-E

RECOVERED #4 STEEL PIN 0.2' DEEP WITH A MAG NAIL OVER THE MONUMENT IN THE INTERSECTION OF QUARRY ROAD AND CORYDON-RAMSEY ROAD. THE MONUMENT WAS LEFT IN PLACE AS RECOVERED AND A NEW MAG NAIL WAS SET IN A CONCRETE PLUG OVER THE MONUMENT. THIS CORNER HAS A LONG LINAGE AND HAS BEEN USED BY LOCAL SURVEYORS AS THE SECTION CORNER FOR WELL OVER 15 YEARS. THE POSITION OF THE CORNER IS SUPPORTED BY MEASUREMENTS TO ADJACENT MONUMENTS IN ALL CARDINAL DIRECTIONS AND BY VERY OLD AND DISTINCT CULTURAL FEATURES IN THE VICINITY. CORNER ACCESSORIES ESTABLISHED:
UTILITY POLE (OHE), S50°E, 50.56' TO A MAG NAIL UP 1.0' ON SW SIDE W/HCSS
SECURITY FENCE CORNER, S43°W, 48.80'
UTILITY POLE (OHT), N64°W, 73.30' TO A MAG NAIL UP 1.4' ON SE SIDE W/HCSS
NW END 12" RCP, N33°E, 51.71'

M-23 QUARTER SECTION CORNER TO SECTIONS 13 & 24, T-3-S, R-3-E

RECOVERED RAILROAD SPIKE 0.4' DEEP WITH A MASONRY NAIL OVER THE MONUMENT IN THE INTERSECTION OF QUARRY ROAD AND CLINE ROAD. THE MONUMENT WAS LEFT IN PLACE AS RECOVERED AND A NEW MAG NAIL WAS SET IN A CONCRETE PLUG OVER THE MONUMENT. THIS CORNER HAS A LONG LINAGE AND HAS BEEN USED BY LOCAL SURVEYORS AS THE QUARTER CORNER FOR WELL OVER 15 YEARS. THE POSITION OF THE CORNER IS SUPPORTED BY MEASUREMENTS TO ADJACENT MONUMENTS IN ALL CARDINAL DIRECTIONS AND BY VERY OLD AND DISTINCT CULTURAL FEATURES IN THE VICINITY. CORNER ACCESSORIES ESTABLISHED:
SW OVERHEAD SIGN BOLT, N52°E, 62.80'
FIRE HYDRANT, N37°W, 46.98'
UTILITY POLE, S41°W, 41.80' TO BOTTOM NAIL OF HCSS

Job #20077-24

Q-21

**PLAT OF SURVEY
2012 HARRISON COUNTY PERPETUATION PROJECT**

SITUATED IN SECTION 24, TOWNSHIP 3 SOUTH, RANGE 3 EAST, HARRISON TOWNSHIP, HARRISON, INDIANA.

EXISTING MONUMENTS RECOVERED FROM PRIOR SURVEYS CONTINUED

O-21 QUARTER CORNER TO SECTIONS 23 & 24, T-3-S, R-3-E

RECOVERED STAINLESS SPIKE IN THE S-BOUND LANES OF CORYDON-RAMSEY ROAD. 6' WEST AND 5' NORTH OF THE INTERSECTION OF CORYDON-RAMSEY ROAD AND THE EAST ENTRANCE TO HARRISON COUNTY HOSPITAL. THE MONUMENT WAS LEFT IN PLACE AS RECOVERED. THIS CORNER POSITION WAS RESTORED PRIOR TO CONSTRUCTION OF THE HOSPITAL CIRCA 2002. SEE SURVEYS RECORDED AS INSTRUMENTS NUMBERS 200305318, 200508712 & 200508869. THE POSITION OF THE CORNER IS SUPPORTED BY MEASUREMENTS TO ADJACENT MONUMENTS IN ALL CARDINAL DIRECTIONS AND BY VERY OLD AND DISTINCT CULTURAL FEATURES IN THE VICINITY. CORNER ACCESSORIES ESTABLISHED:

- HCSS ON GUARDRAIL, N41°W, 52.85'
- HCSS ON GUARDRAIL, S50°E, 72.40'
- STOP SIGN POST, N60°E, 63.91'
- HOSPITAL SIGN EAST LEG, S12°W, 91.92'

O-23 CENTER QUARTER CORNER IN SECTION 24, T-3-S, R-3-E

CALCULATED CORNER POSITION PER PRIOR SURVEYS BY OTHERS. SEE SURVEY BOOK 3, PAGE 466 AND INSTRUMENT NUMBER 98056871. THE CALCULATED CORNER IS S11°W, 1.93 FEET FROM A ROAD NAIL SET OVER AN EXISTING MAGNETIC READING. NO ACCESSORIES ESTABLISHED THIS SURVEY.

P-23 CENTERSOUTH SIXTEENTH CORNER IN SECTION 24, T-3-S, R-3-E

RECOVERED PINNACLE LIMESTONE 0.2' BY 0.1' PROJECTING 0.3' WITH YELLOW HARRISON COUNTY SURVEY SIGN, 0.5' SOUTH. THE MONUMENT WAS LEFT IN PLACE AS RECOVERED. THE STONE IS IN A VERY OLD AND PROMINENT N-S CULTURAL LINE. THE POSITION OF THE CORNER IS SUPPORTED BY MEASUREMENTS TO ADJACENT MONUMENTS IN ALL CARDINAL DIRECTIONS AND BY VERY OLD AND DISTINCT CULTURAL FEATURES IN THE VICINITY. SEE SURVEY BOOK 3, PAGE 466. CORNER ACCESSORIES ESTABLISHED:

- FENCE CORNER, SOUTH 0.7' TO A MAG NAIL UP 0.6' ON E SIDE
- SASSAFRAS 12", N29°W, 3.28' TO A MAG NAIL UP 0.6' ON SW SIDE
- SW STEEL GAS VALVE GUARD POST, S85°E, 22.11'

Q-21 SECTION CORNER TO SECTIONS 23, 24, 25 & 26, T-3-S, R-3-E

RECOVERED 1" STEEL PIN 0.3' DEEP AT NE CORNER OF YARD AT 2010 KENNEDY DRIVE, PER OLD RECOVERY NOTES. THE MONUMENT WAS LEFT IN PLACE AS RECOVERED. THE MONUMENT IS IN A VERY OLD AND PROMINENT N-S CULTURAL LINE. THE POSITION OF THE CORNER IS SUPPORTED BY MEASUREMENTS TO ADJACENT MONUMENTS IN ALL CARDINAL DIRECTIONS AND BY VERY OLD AND DISTINCT CULTURAL FEATURES IN THE VICINITY. CORNER ACCESSORIES ESTABLISHED:

- W. OAK 29", S57°E, 3.41' TO A MAG NAIL UP 0.6' ON NE SIDE
- W. OAK 17", S13°E, 45.47' TO A MAG NAIL UP 0.6' ON W SIDE
- UTILITY POLE, N89°W, 44.36' TO MAG NAIL UP 0.6' ON S SIDE
- NE CORNER HOUSE, S75°E, 54.65'

O-23 QUARTER CORNER TO SECTIONS 24 & 25, T-3-S, R-3-E

RECOVERED 1' CRIMPED TOP PIPE 0.7' DEEP AT THE REAR OF THE COMMERCIAL BUILDING AT 1995 EDSSEL LANE. THE MONUMENT WAS LEFT IN PLACE AS RECOVERED. THE MONUMENT IS IN A VERY OLD AND PROMINENT N-S CULTURAL LINE. THE POSITION OF THE CORNER IS SUPPORTED BY MEASUREMENTS TO ADJACENT MONUMENTS IN ALL CARDINAL DIRECTIONS AND BY VERY OLD AND DISTINCT CULTURAL FEATURES IN THE VICINITY. CORNER ACCESSORIES ESTABLISHED:

- CARSONITE POST, NORTH, 0.6'
- HICKORY 18", N55°W, 7.50' TO A MAG NAIL UP 0.6' ON NE SIDE
- HACKBERRY 9", N64°E, 4.54' TO A MAG NAIL UP 4.54' ON NW SIDE
- POST, S87°W, 0.6'
- NW CORNER BUILDING, S55°E, 17.95'

CORNERS RESTORED

M-25 EAST SECTION CORNER TO SECTIONS 13 & 24, T-3-S, R-3-E

RESTORED THE SECTION CORNER ON THE RANGE LINE FROM MONUMENTS RECOVERED TO THE NORTH, SOUTH AND WEST. SET A MAGNETIC MASONRY NAIL IN THE SOUTH BOUND LANES OF STATE HIGHWAY 135. THE POSITION OF THE CORNER IS SUPPORTED BY MEASUREMENTS TO ADJACENT MONUMENTS TO THE NORTH, SOUTH AND WEST, AND BY VERY OLD AND DISTINCT CULTURAL FEATURES IN THE VICINITY. CORNER ACCESSORIES ESTABLISHED:

MONUMENTS IN ALL CARDINAL DIRECTIONS AND BY VERY OLD AND DISTINCT CULTURAL FEATURES IN THE VICINITY. CORNER ACCESSORIES ESTABLISHED:
HCSS ON GUARDRAIL, N41°W, 52.85'
HCSS ON GUARDRAIL, S50°E, 72.40'
STOP SIGN POST, N60°E, 63.91'
HOSPITAL SIGN EAST LEG, S12°W, 91.92'

O-23 CENTER QUARTER CORNER IN SECTION 24, T-3-S, R-3-E

CALCULATED CORNER POSITION PER PRIOR SURVEYS BY OTHERS. SEE SURVEY BOOK 3, PAGE 466 AND INSTRUMENT NUMBER 98056871. THE CALCULATED CORNER IS S11°W, 1.93 FEET FROM A ROAD NAIL SET OVER AN EXISTING MAGNETIC READING. NO ACCESSORIES ESTABLISHED THIS SURVEY.

P-23 CENTERSOUTH SIXTEENTH CORNER IN SECTION 24, T-3-S, R-3-E

RECOVERED PINNACLE LIMESTONE 0.2' BY 0.1' PROJECTING 0.3' WITH YELLOW HARRISON COUNTY SURVEY SIGN, 0.5' SOUTH. THE MONUMENT WAS LEFT IN PLACE AS RECOVERED. THE STONE IS IN A VERY OLD AND PROMINENT N-S CULTURAL LINE. THE POSITION OF THE CORNER IS SUPPORTED BY MEASUREMENTS TO ADJACENT MONUMENTS IN ALL CARDINAL DIRECTIONS AND BY VERY OLD AND DISTINCT CULTURAL FEATURES IN THE VICINITY. SEE SURVEY BOOK 3, PAGE 466. CORNER ACCESSORIES ESTABLISHED:
FENCE CORNER, SOUTH 0.7' TO A MAG NAIL UP 0.6' ON E SIDE
SASSAFRAS 12", N29°W, 3.28' TO A MAG NAIL UP 0.6' ON SW SIDE
SW STEEL GAS VALVE GUARD POST, S85°E, 22.11'

O-21 SECTION CORNER TO SECTIONS 23, 24, 25 & 26, T-3-S, R-3-E

RECOVERED 1" STEEL PIN 0.3' DEEP AT NE CORNER OF YARD AT 2010 KENNEDY DRIVE, PER OLD RECOVERY NOTES. THE MONUMENT WAS LEFT IN PLACE AS RECOVERED. THE MONUMENT IS IN A VERY OLD AND PROMINENT N-S CULTURAL LINE. THE POSITION OF THE CORNER IS SUPPORTED BY MEASUREMENTS TO ADJACENT MONUMENTS IN ALL CARDINAL DIRECTIONS AND BY VERY OLD AND DISTINCT CULTURAL FEATURES IN THE VICINITY. CORNER ACCESSORIES ESTABLISHED:
W. OAK 29", S57°E, 3.41' TO A MAG NAIL UP 0.6' ON NE SIDE
W. OAK 17", S13°E, 45.47' TO A MAG NAIL UP 0.6' ON W SIDE
UTILITY POLE, N89°W, 44.36' TO MAG NAIL UP 0.6' ON S SIDE
NE CORNER HOUSE, S75°E, 54.65'

O-23 QUARTER CORNER TO SECTIONS 24 & 25, T-3-S, R-3-E

RECOVERED 1' CRIMPED TOP PIPE 0.7' DEEP AT THE REAR OF THE COMMERCIAL BUILDING AT 1995 EDSSEL LANE. THE MONUMENT WAS LEFT IN PLACE AS RECOVERED. THE MONUMENT IS IN A VERY OLD AND PROMINENT N-S CULTURAL LINE. THE POSITION OF THE CORNER IS SUPPORTED BY MEASUREMENTS TO ADJACENT MONUMENTS IN ALL CARDINAL DIRECTIONS AND BY VERY OLD AND DISTINCT CULTURAL FEATURES IN THE VICINITY. CORNER ACCESSORIES ESTABLISHED:
CARSONITE POST, NORTH, 0.6'
HICKORY 18", N55°W, 7.50' TO A MAG NAIL UP 0.6' ON NE SIDE
HACKBERRY 9", N64°E, 4.54' TO A MAG NAIL UP 4.54' ON NW SIDE
POST, S87°W, 0.6'
NW CORNER BUILDING, S55°E, 17.95'

CORNERS RESTORED

M-25 EAST SECTION CORNER TO SECTIONS 13 & 24, T-3-S, R-3-E

RESTORED THE SECTION CORNER ON THE RANGE LINE FROM MONUMENTS RECOVERED TO THE NORTH, SOUTH AND WEST. SET A MAGNETIC MASONRY NAIL IN THE SOUTH BOUND LANES OF STATE HIGHWAY 135. THE POSITION OF THE CORNER IS SUPPORTED BY MEASUREMENTS TO ADJACENT MONUMENTS TO THE NORTH, SOUTH AND WEST, AND BY VERY OLD AND DISTINCT CULTURAL FEATURES IN THE VICINITY. CORNER ACCESSORIES ESTABLISHED:
WEST ANCHOR BOLT STEEL TRAFFIC SIGNAL POLE, N83°E, 81.35'
WEST ANCHOR BOLT STEEL TRAFFIC SIGNAL POLE, S47°E, 110.33'
EAST ANCHOR BOLT STEEL TRAFFIC SIGNAL POLE, S50°W, 94.17'
EAST ANCHOR BOLT STEEL TRAFFIC SIGNAL POLE, N69°W, 74.00'
UTILITY POLE WITH HCSS (BOTTOM NAIL), N78°W, 83.65'
CONC. ROW MONUMENT, N57°W, 100.27'