



HARRISON COUNTY

1-S  
 CORNER 1-S TOWNSHIP 3 SOUTH RANGE 2 EAST 2 ND PRINCIPAL MERIDIAN

LOCATION	DESCRIPTION OF		DISTANCE FROM CORNER	BEARING FROM CORNER	DATE CHECKED	CHECKED BY	FIELD BOOK	REMARKS
	MONUMENT	REFERENCE						
N.W. Corner S.W. 1/4 Section 30	Stone marked with metal post and #5 rebar	1.30' Sassafras	18.18'	N47-25-0E	11-18-85	T.B.	#3 Pg.28	Sign Place
		0.60' Hickory	10.60'	S28-35-0E	11-18-85	T.B.		Sign Placed

Stone is .60' x .60' x .80'  
cut at ground. Stone  
is marked with a  
metal post & sign & a  
4.5 ft. bar.

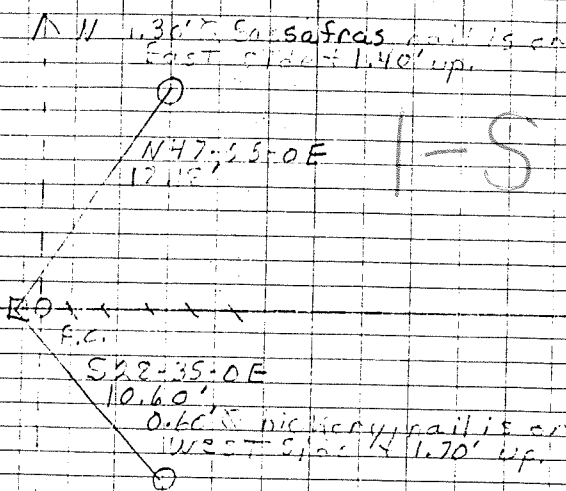
All trees in the area  
with a diameter rail  
in middle. All trees  
have a witness sign.

Date 11-18-85

Party Chief T. Brewer

Head Chain H. Clements

Rear Chain M. Riley



NW corner SW 1/4

section 30, T 35, R 1 E S

PAGE 28

HARRISON

COUNTY

CORNER 17-M

TOWNSHIP 3

RANGE 2

EAST

2ND

PRINCIPAL MERIDIAN

LOCATION	DESCRIPTION OF		DISTANCE FROM CORNER	BEARING FROM CORNER	DATE CHECKED	CHECKED BY	FIELD BOOK	REMARKS
	MONUMENT	REFERENCE						
SW Corner Sec. 14	4" Rebar	8" White Oak	19.71	E61-19-59	2-1-90	G.S.	#4 Pg. 6	Sign Placed
		5" Maple	13.33	E5-52-16	2-1-90	G.S.		Sign Placed
		7" White Oak	9.07	NW76-07-21	2-1-90	G.S.		Sign Placed

LAND CORNER RECORD  
(RECTANGULAR SURVEYS)

21-E

Harrison Co. No. E-21

T 3 S R 2 E 2nd Principal Meridian County Harrison State Indiana

Section Corner common to Sections 1 and 2, 11 and 12

EXISTING SURVEYS																	
<p style="text-align: center;">Original Government Survey</p> <p>Year surveyed <u>1805</u> Original monument <u>Wood Post</u> <small>(wood post, stone, pile of stones, etc.)</small></p> <hr/> <p style="text-align: center;">Bearing Trees</p> <p>Species _____ Diameter _____ Bearing _____ Distance _____</p>	<p style="text-align: center;">Original Evidence Found</p> <p>Year of search <u>N/A</u> By _____ Monument found _____</p> <hr/> <p style="text-align: center;">Original Bearing Trees Found</p> <p>Species _____ Diameter _____ Bearing _____ Distance _____</p>																
<p style="text-align: center;">Subsequent Corner Restoration</p> <p>Year surveyed _____ By _____ Where filed or recorded _____ Monument _____ <small>(Original, concrete post, iron rod, etc...)</small></p> <hr/> <p style="text-align: center;">Bearing Trees, Reference Objects</p> <p>Species _____ Diameter _____ Bearing _____ Distance _____</p>	<p style="text-align: center;">Evidence of Subsequent Corner Restoration Found</p> <p>Year of search <u>1999</u> By <u>VHM</u> <u>Recovered 4" by 9" sandstone, projecting 1.4' with "+" on top and "T3S R2E S 1-2" on North face and "S 11-12" on South face.</u></p> <div style="text-align: center;"> <p>N-FACE      S-FACE</p> </div>																
<div style="text-align: center;"> </div>	<p style="text-align: center;">Relation of Evidence to Record Features Along Section Lines</p> <p>Section line to sections _____ Object _____ Record Distance _____ Measured Distance _____</p> <hr/> <p style="text-align: center;">Other Evidence</p> <p>Describe evidence of use and occupation such as roads, fences, clearings, timber cutting lines, plantations, etc... Cite source of testimony, if any. <u>Stone is situated on East facing slope, approximately 225 feet East of North-South track road, 15 feet Southwest of small finger drain which flows Northwest and Southeast.</u></p> <hr/> <p style="text-align: center;">Perpetuation Record</p> <p>Monument and accessories established. Include brief description of area. <u>Stone left as recovered. Placed a cairn of rocks around monument.</u></p> <table border="1" style="width:100%; border-collapse: collapse; text-align: center;"> <tr> <td style="width:25%;">Ash</td> <td style="width:25%;">Beech</td> <td style="width:25%;">W. Oak</td> <td style="width:25%;">Sugar</td> </tr> <tr> <td>14"</td> <td>18"</td> <td>6"</td> <td>18"</td> </tr> <tr> <td>S 88° E</td> <td>S 25° W</td> <td>N 25° E</td> <td>S 78° W</td> </tr> <tr> <td>11.0'</td> <td>18.3'</td> <td>14.0'</td> <td>37.6'</td> </tr> </table> <hr/> <p>Certified corner restoration certificate prepared Yes _____ No _____ Filed in County records at <u>Survey Book 4, Page 370</u></p> <p>N: 1103825.3      ISPCS, East Zone, 1983 Datum (1999) E: 158751.6      US Survey Foot</p>	Ash	Beech	W. Oak	Sugar	14"	18"	6"	18"	S 88° E	S 25° W	N 25° E	S 78° W	11.0'	18.3'	14.0'	37.6'
Ash	Beech	W. Oak	Sugar														
14"	18"	6"	18"														
S 88° E	S 25° W	N 25° E	S 78° W														
11.0'	18.3'	14.0'	37.6'														
<p>At time of search:</p> <p>1. Did you have the record description? Yes <u>X</u> No _____</p> <p>2. How was search area located? <u>pacing, chaining, photo, maps, etc. SURVEYING</u></p> <p>3. Man hours spent in search <u>N/A</u></p> <p>4. Do you think additional search might recover evidence? Yes _____ No <u>X</u></p> <p>5. Signature <u>Vicki H. May</u></p>																	

HARRISON

COUNTY

CORNER 21-K

TOWNSHIP 3

RANGE 2 EAST

2ND PRINCIPAL MERIDIAN

LOCATION	DESCRIPTION OF		DISTANCE FROM CORNER	BEARING FROM CORNER	DATE CHECKED	CHECKED BY	FIELD BOOK	REMARKS
	MONUMENT	REFERENCE						
SW Corner NW $\frac{1}{4}$ Sec 13	5/8 Rebar w/cap	Corn. Concr Foundation	38.8'	S 70 W	4-08	TOB	5/120	Car. Post Placed
		Power Pole w/mag nail	24.73'	N 10 E				
		Power Pole	22.15'	S 0 W				Sign Placed

21-K

21-K

DATE OF FIELD WORK  
11-8-07  
T.E. FOR R.L.I P.L.S.  
HARRISON COUNTY  
SPENCER TOWNSHIP  
SOUTHWEST CORNER  
NORTHWEST QUARTER  
SECTION 13  
T 3-S, R 2-E

SET MAGNAIL IN  
POWERPOLE  
2' ABOVE GRADE

SET 5/8 REBAR AND CAP  
AT GRADE  
"ISGRIGG LS"

CORNER OF  
CONCRETE  
FOUNDATION

S 70°00'00" W  
38.80'

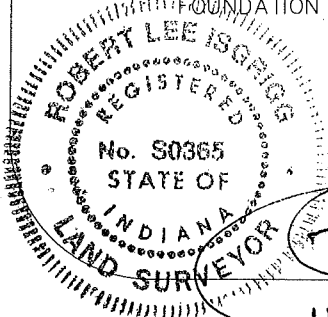
S 0°00'00" W  
22.75'

N 10°00'00" E  
24.73'

QUARTER SECTION LINE

1/2" REBAR  
2" ABOVE GRADE  
"PRIMAVERA LS"

SET FROM TECHNICAL  
RESUBDIVISION OF THE SECTION  
FROM COUNTY SURVEYOR  
MONUMENTS FOUND



11-13-07

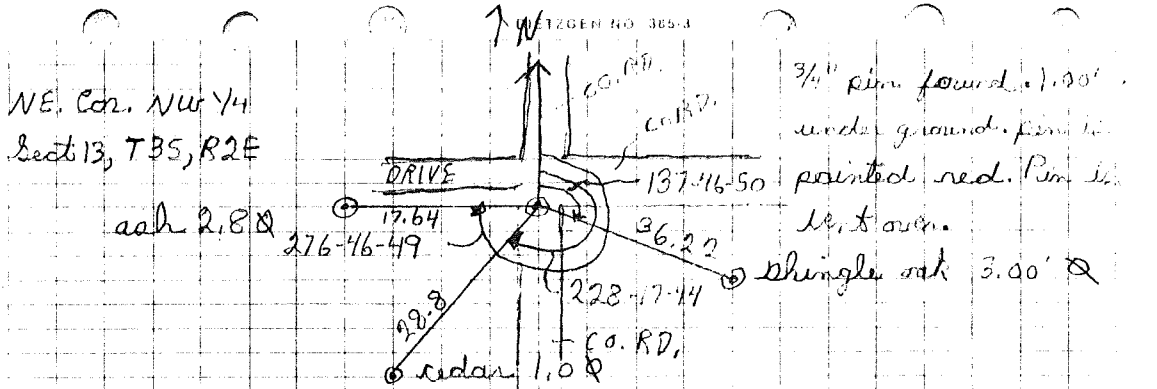
23-1

LOCATION	DESCRIPTION OF MONUMENT		DISTANCE FROM CORNER	BEARING FROM CORNER	DATE CHECKED	CHECKED BY	FIELD BOOK	REMARKS
	MONUMENT	REFERENCE						
N.E. Corner N.W. 1/4 Section 13	Stone	36" Shingle Oak	36.22	S42-13- 10E	7-15-81	T.B.	#1 Pg. 42	Sign Placed
		12" Cedar	28.8	S48-18W	7-15-81	T.B.		Sign Placed
		34" Ash	17.64	N83-13-W	7-15-81	T.B.		Sign Placed

No Stone  
Checked Out in Ref.



23-I: I-23



All trees have blaze marks with alum. nail in middle of blaze.  
All trees have a witness sign & a red ring painted 6.00' above ground.

Date 7-15-81

P. Chief T. Brown  
H. Chain C. Mathes  
R. Chain M. Masses

HARRISON COUNTY

23-S

CORNER 23-S TOWNSHIP 3 SOUTH RANGE 2 EAST 2 ND PRINCIPAL MERIDIAN

LOCATION	DESCRIPTION OF MONUMENT		DISTANCE FROM CORNER	BEARING FROM CORNER	DATE CHECKED	CHECKED BY	FIELD BOOK	REMARKS
	MONUMENT	REFERENCE						
N.W. Corner of S.E. 1/4 Sec. 25	R/W Marker	#5 Re Bar	78.40	N31-15E	4-26-82	M.B.	#2 Pg.1	
		R.O.W. Marker	63.90	S38-5E	4-26-82	M.B.		
		High Voltage Utility Line Pole	53.0	N65-W	4-26-82	M.B.		Sign Placed

4-26-82

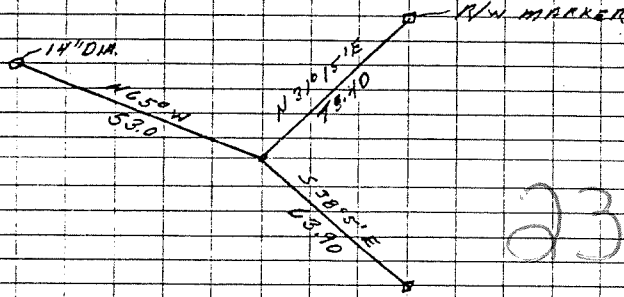


PR MAX BROWN  
HC GERAL SPEARS  
RC BRAD CAHE

N.W. CORNER OF  
S.E. 1/4, SECT. 25, T3S, R2E

23-S

HIGH VOLTAGE  
UTILITY LINE  
NAH IN NORTH  
SIDE POLE 12"  
ABOVE GROUND



23-S

CORNER IS #5 RE-BAR  
IN CENTER OF 462 AS  
SHOWN ON ROAD PLANS.

HARRISON

COUNTY

CORNER 24- W

TOWNSHIP 3

RANGE 2

EAST

2ND

PRINCIPAL MERIDIAN

LOCATION	DESCRIPTION OF		DISTANCE FROM CORNER	BEARING FROM CORNER	DATE CHECKED	CHECKED BY	FIELD BOOK	REMARKS
	MONUMENT	REFERENCE						
S.W. Corner E $\frac{1}{2}$ , N.E. $\frac{1}{4}$ Sec 36	Stone 3/4" Pipe		31.91	N3-28-0E	4-3-91	T.B.	#4 Pg. 21	Sign Placed
		0.65' Poplar	20.82	N28-23-0E	4-3-91	T.B.	#4 Pg. 21	Sign Placed
		.50' Beech	27.95	S41-28-0E	4-3-91	T.B.		Sign Placed

24-W

24-W

DIETZGEN NO. 385-3

24W

S.W. Corner E 1/2, NE 1/4  
sect. 36. T 35, R 2 E

All trees have a blaze  
with a aluminum nail in  
middle. All trees have a  
witness sign.

N

4-3-91

STONE is .50' x .40' x .40'  
out of ground, stone is  
marked with a 3/4" Pipe

.85' Ø maple, nail on west side &  
1.3 up.

N 3-28-0 E 31.91

.65' Ø Poplar, nail on west

side & 1.65 up.

N 28-23-0 E 20.82

3/4" Pipe

STONE

S 41-28-0 E 27.95

.50' Ø Beech, nail on west

side & 1.3 up.

Party Chief T. Brown  
Head Chain B. Mosses  
Rear Chain J. Toole

CORNER RECORD

AGE

HARRISON COUNTY

CORNER 25-I TOWNSHIP 3 SOUTH RANGE 2 EAST 2 ND PRINCIPAL MERIDIAN

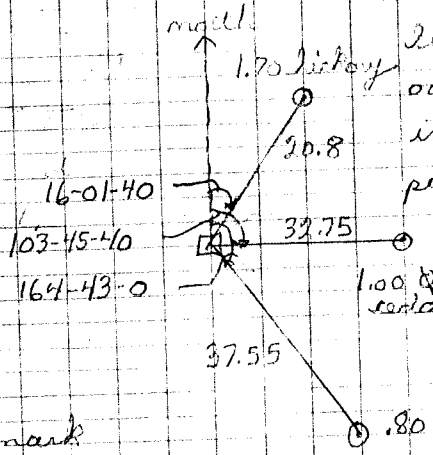
25-I

LOCATION	DESCRIPTION OF		DISTANCE FROM CORNER	BEARING FROM CORNER	DATE CHECKED	CHECKED BY	FIELD BOOK	REMARKS
	MONUMENT	REFERENCE						
N.E. Corner Section 13	Stone	19" Hickory	20.8	N16-1-40E	7-16-81	T.B.	#1 Pg. 42	Sign Placed
		12" Cedar	32.75	S75-14E	7-16-81	T.B.		Sign Placed
		9" Cedar	37.55	S15-17E	7-16-81	T.B.		Sign Placed

25-1 I-25

↑ NEITZGEN NO 389-3

P. Chief T. Brown  
 H. Chain C. Mathes  
 R. Chain M. Moses



210 in. 65 x 45 x 1 1/2  
 out of ground. This  
 is marked with a metal  
 post & sign. sign is 1.00'  
 east of stone. stone  
 is painted red. has  
 X on top.

1.00 & cedar

all trees have a blaze mark  
 with a alum nail in middle  
 of blaze. All trees have a witness  
 sign & a red ring painted  
 6.00' above ground.

Date 7-16-81

NE. Cor. Sect. 13  
 T35, R2E

25-M

HARRISON

COUNTY

CORNER 25-M

TOWNSHIP 3

RANGE 2

EAST 2ND

PRINCIPAL MERIDIAN

LOCATION	DESCRIPTION OF		DISTANCE FROM CORNER	BEARING FROM CORNER	DATE CHECKED	CHECKED BY	FIELD BOOK	REMARKS
	MONUMENT	REFERENCE						
SE Corner Sec. 13	5/8" Rebar w/cap	15" Cherry	27'	S85 W	4-18-08	TOB	5/119	
		12" Walnut	26.65'	N 70 E				
		8" Red Oak	54.35'	N 35 E				



25-M

25-M

FOUND 12"x12" STONE  
NE CORNER SECTION 13  
2" ABOVE GRADE  
HCSM

FOUND NAIL AT  
GRADE  
CENTERLINE OF  
DEVILS ELBOW  
ROAD

SET MAGNAIL  
IN 8" RED OAK TREE  
2' ABOVE GRADE

SET MAGNAIL  
IN 12" WALNUT TREE  
2' ABOVE GRADE

SET 5/8" REBAR AND CAP  
AT GRADE  
"ISGRIGG LS"

SET MAGNAIL IN  
15" CHERRY TREE  
2' ABOVE GRADE

SET FROM DEED ANALYSIS  
OF ADJOINING DEEDS AND  
OTHER COUNTY SURVEYOR  
MONUMENTS FOUND

DATE OF FIELD WORK  
11-8-07  
T.E FOR R.L.I P.L.S.  
HARRISON COUNTY  
SPENCER TOWNSHIP  
SOUTHEAST CORNER  
SECTION 13  
T 3-S, R 2-E

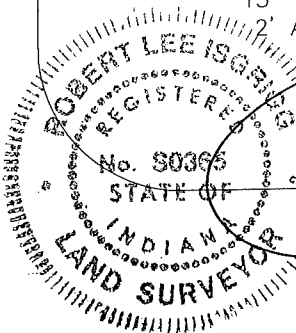
5332.28

264'

N 35°00'00" E  
54.35'

N 70°00'00" E  
26.65'

S 85°00'00" W  
27.00'



11.13.07

HARRISON COUNTY

COUNTY

25-S

CORNER 25-S TOWNSHIP 3 SOUTH RANGE 4 EAST 2 ND PRINCIPAL MERIDIAN

CORNER 25-S

TOWNSHIP 3 SOUTH

RANGE 4 EAST

2 ND PRINCIPAL MERIDIAN

LOCATION	DESCRIPTION OF		DISTANCE FROM CORNER	BEARING FROM CORNER	DATE CHECKED	CHECKED BY	FIELD BOOK	REMARKS
	MONUMENT	REFERENCE						
N.E. Corner S.E. 1/4 Section 25	Stone marked with 5" Rebar	0.40' Maple	16.0'	N12-22-0E	11-18-85	T.B.	#3 Pg27	Sign Placed
		0.55' Maple	8.35	N75-43-0E	11-18-85	T.B.		Sign Placed
		0.60' Maple	9.84	S40-04-0W	11-18-85	T.B.		Sign Placed

STONE IS 60x30x80 - 17' 0"   
 around. Stone is marked with   
 3 metal pins 1/2" diameter of stone.

20 trees in a line with a   
 diameter of 10" to 12". All trees   
 have a witness sign.

Date 11-17-55

9.60' Ø maple, nail is on E side   
 side + 118' up.

NE corner, SE74

Section 25, T35, R2E

540-04-047   
 9.24

N

9.55' Ø maple, nail is on west   
 side + 118' up.

1115-22-NE   
 16.0'

9.55' Ø maple, nail is on   
 North side + 118' up.

N75-42-0E   
 8.35

Party Chief - T. Brown

Head Chain - J. Brown

Rear Chain - M. Riley

PAGE 29   
 11-15