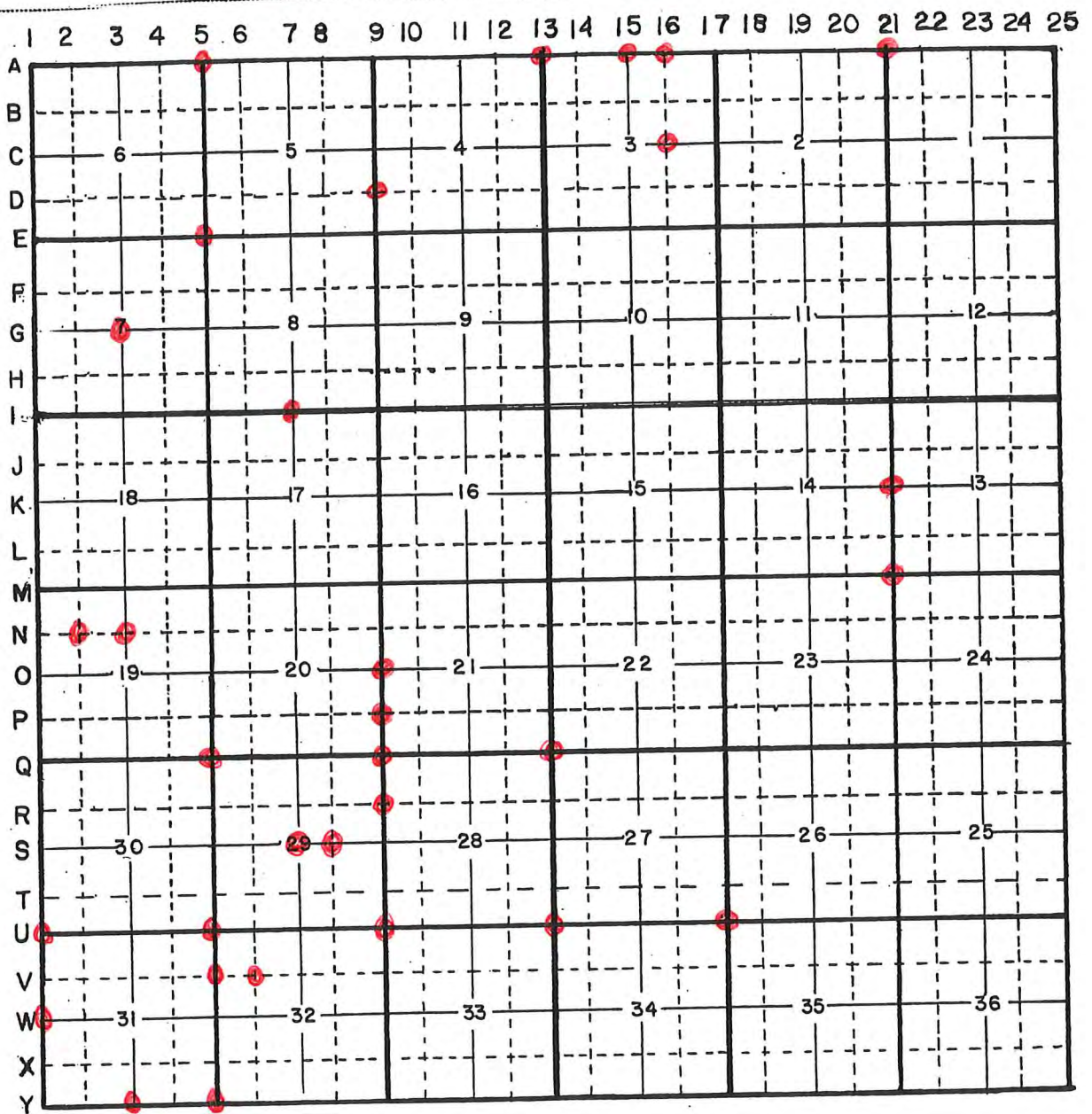


HARRISON COUNTY CORNER REFERENCE

TOWNSHIP 2 SOUTH RANGE 3 EAST



HARRISON

COUNTY

CORNER 1-U

TOWNSHIP 2

RANGE 3

EAST

2ND

PRINCIPAL MERIDIAN

1-0

LOCATION	DESCRIPTION OF		DISTANCE FROM CORNER	BEARING FROM CORNER	DATE CHECKED	CHECKED BY	FIELD BOOK	REMARKS
	MONUMENT	REFERENCE						
S.W. CORNER SEC. 30	STONE	50 Ø HICKORY NAIL NORTH #4 REBAR	9.39	N80-14-0E	3-24-95	T.B.	#4Pg.67	SIGN PLACED
		.40' DOGWOOD NAIL EAST 1.0' up	STONE IS .80' X .40' AND SIGN 11.61	FLUSH WITH GROUND				STONE MARKED METAL POST SIGN PLACED
		0.70 Ø OAK	10.20	WEST				SIGN PLACED

1-U

TN (IUC)

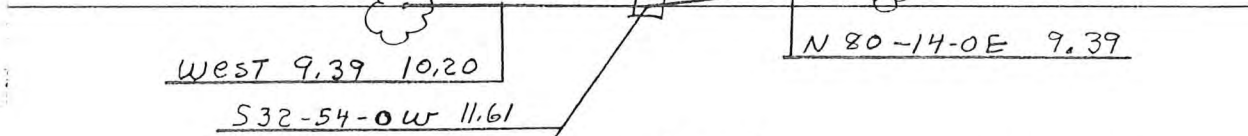
All Trees have a blaze with a aluminum in middle. All Trees have a witness sign.

Party Chief T. Brown
Head Chain J. MOTT

DATE 3-24-95

0.70' Oak, nail on north + 1.0' up.

.50' Hickory,
nail on north + .70' up.



West 9.39 10.20

S32-54-0W 11.61

N 80-14-0E 9.39

STONE is .80' x .40'
+ flush with ground.
Stone is marked with
a metal Post + sign.

.40' Dogwood, nail on
EAST + 1.0' up.

SW COR., Sect 30
T25 R3E

HARRISON

TY

PRINCIPAL MERIDIAN

2ND

EAST

3E

RANGE

2S

TOWNSHIP

U-1

CORNER

1-U

LOCATION	DESCRIPTION OF		DISTANCE FROM CORNER	BEARING FROM CORNER	DATE CHECKED	CHECKED BY	FIELD BOOK	REMARKS
	MONUMENT	REFERENCE						
NW Corner Section 31	Stone	4" Hickory w/sign	9.3'	N 83 E	8-4-08	TOB	4/67	Update
		6" W. Oak w/sign	9.9'	W				
		4" Post	6.7'	N 73 W				

HARRISON

COUNTY

CORNER W-1 TOWNSHIP 2 S RANGE 3 E EAST 2ND PRINCIPAL MERIDIAN

1-W

LOCATION	DESCRIPTION OF		DISTANCE FROM CORNER	BEARING FROM CORNER	DATE CHECKED	CHECKED BY	FIELD BOOK	REMARKS
	MONUMENT	REFERENCE						
W 1/4 Corner Sec. 31	5/8 Pipe	8" Poplar	14.4'	N 29 W	07 & 08	TOB	6/4	
		Util. Pole	54.7'	n 39 e				
		15" Elm	11.3'	S 20 W				

HW

W 1/4 COR
Sec. 31, T2S, R3E

W-1

EX 5/8" pipe prot .35,
concrete post 0.5' E steel T-post 0.2' NW
witnesses

Poplar 8" w/s	util. Pole w/trans.	ELM 15"
N29W 14.4'	N39E 54.7'	S20W 11.3'

64 FT S OF extended s face Frame House

(8)

1-W

HARRISON COUNTY SURVEYOR
CORNER MONUMENT RECOVERY & REFERENCE RECORD

TWNSHIP: 2 RANGE: 3 SECTION: 31

CORNER REF. I.D.: W-1
DATE: 8/14/08

MONUMENT INFORMATION

LOCATION: W 1/4 CORNER

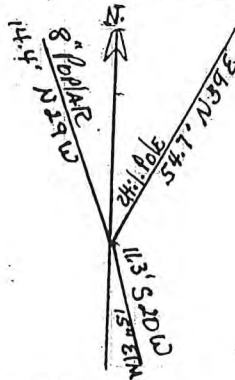
DESCRIPTION: 5/8 Pipe

ADDITIONAL DISTINGUISHING CHARACTERISTICS:

SIGN PLACED: () YES DATE: / /

WITNESS MARKERS

TYPE	SIGN	BLAZE	ADDITION DESCRIPTION
1. 8" PAPER	(X)	()	14.4' N 29 W
2. 4 1/2" Pole	()	()	54.7' N 39 E
3. 2 1/2" IM	()	()	11.3' S 20 W



	1	2	3	4	5	6	7	8	9	10	11	12	13	14	15	16	17	18	19	20	21	22	
A																							
B																							
C																							
D																							
E																							
F																							
G																							
H																							
I																							
J																							
K																							
L																							
M																							
N																							
O																							
P																							
Q																							
R																							
S																							
T																							
U																							
V																							
W																							
X																							
Y																							
Z																							

RECOVERED BY: UM

DATE: 2/2/00
DATE: / /
DATE: / /

REFERENCED BY: TOB

DATE: / / 07 + 08
DATE: / /
DATE: / /

RECORDED IN PERPETUATION RECORDS BOOK:

Thomas D. Bube

DATE: 8/18/08

CORNER RECORD

HARRISON COUNTY

CORNER 2-N TOWNSHIP 2 SOUTH RANGE 3 EAST 2 ND PRINCIPAL MERIDIAN

LOCATION	DESCRIPTION OF MONUMENT		DISTANCE FROM CORNER	BEARING FROM CORNER	DATE CHECKED	CHECKED BY	FIELD BOOK	REMARKS
	MONUMENT	REFERENCE						
SE Corner NW $\frac{1}{2}$, NW $\frac{1}{4}$ Section 19	Stone	16" Hickory	13.95	N 69.37W	4-20-81	T.B.	#1 Pt. 16	Sign Placed
		Fence Post	26.40	S85 W	4-20-81	T.B.		Sign Placed
		Tree	14.82	S35-3W	4-20-81	T.B.		Sign Placed

2-N

2-N

DIETZGEN MO. 3854

Date 4-20-81

Party Chief T. Brown

Head Chain C. Matthes

Rear Chain S. Hughes

NW 1/4, NW 1/4, SE Cor

Sect 19, T 25, R 3 E

1.30 Hickory

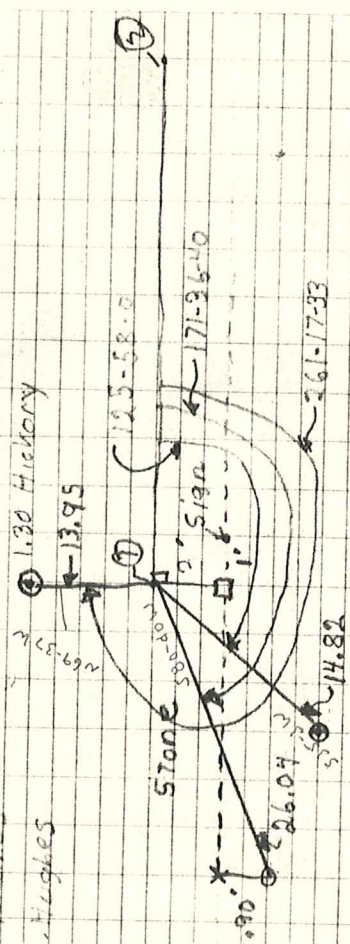
13.95

125-58.0

171-96.40

14.82

161-17.93



Stone is 25X.75X.65 out of ground, Stone has X in Top, Stone is marked with metal post & sign. All trees have blaze marks with aluminum nails in middle of blaze. Trees are marked with red paint & witness signs.

3-G

CORNER 3-G

HARRISON

COUNTY

TOWNSHIP 2 SOUTH

RANGE 3 EAST

2 ND PRINCIPAL MERIDIAN

LOCATION	DESCRIPTION OF		DISTANCE FROM CORNER	BEARING FROM CORNER	DATE CHECKED	CHECKED BY	FIELD BOOK	REMARKS
	MONUMENT	REFERENCE						
N.W. Corner S.W. 1/4 S.E. 1/4 Section 7	Stone Marked with #5 rebar		18.10'	West	10-23-85	T.B. #3	Pg. 23	Sign Placed
		1.30' Oak	14.30	S36-55-oW	10-23-85	T.B.		Sign Placed

CORNER RECORD

HARRISON COUNTY

CORNER 3-N TOWNSHIP 2 SOUTH

RANGE 3 EAST 2 ND PRINCIPAL MERIDIAN

3-N

LOCATION	DESCRIPTION OF MONUMENT		DISTANCE FROM CORNER	BEARING FROM CORNER	DATE CHECKED	CHECKED BY	FIELD BOOK	REMARKS
	MONUMENT	REFERENCE						
NW Corner SW $\frac{1}{4}$	Aluminin Disc.	9" Cedar	38.64	N 3-26 E	4-17-81	T.B.	#1 Pg. 15	Sign Placed
NE $\frac{1}{4}$ Section 19		16" & 9" DBL. Hickery	22.24	N21-4W	4-17-81	T.B.		Sign Placed
		Corner Brace Post	6.13	N6-51E	4-17-81	T.B.		Sign Placed

3-N

(N-3)

TOETZGEN NO. 3853

Date 4-17-21

NORTH

NE 1/4, S 20 1/4, NW COR.

T 25 R 3 E SEC 7 19

Cedar tree (.75 dia)

(One is 1.3 dia other .75 dia)
Double Hickory tree

The blaze is in 10424-12

The larger one 13.54

80-10-50

WEST

Party Chief T. Brown 232-31-20

Head Chain C. Mathes

Rear Chain S. Huelges

32.17

191-40.0

6.55

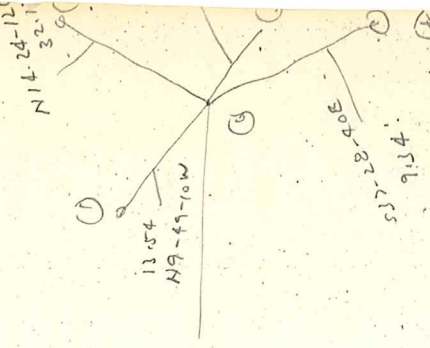
cor. brace post (old R.R. Tie)

9.34

FK (.85' Cedar post)

Fence cor has a #5 Rebar with a allum. cap (.30 dia), also has a metal post with sign, Rebar is on west side of cor. Both trees have blaze marks, blaze has allum. nail in middle of blaze. The cor brace has a allum. nail on west side 1.00' off ground. STONE WAS ORIGINALLY LOCATED OR REBAR POST

PER 50 SEC.



10" Dia x 9' 0 1/2

Double Hickory Tree

Cedar Tree 9' 0

Cor. Brace Post

HARRISON

COUNTY

CORNER 3 - Y TOWNSHIP 2 RANGE 3 EAST 2ND PRINCIPAL MERIDIAN

3-Y

LOCATION	DESCRIPTION OF		DISTANCE FROM CORNER	BEARING FROM CORNER	DATE CHECKED	CHECKED BY	FIELD BOOK	REMARKS
	MONUMENT	REFERENCE						
S.W. Corner S.E. 1/4 Section 31	Stone	16" Sugar Maple	31.94	9-00-00	4-2-90	R.M.	#4 Pg.	Sign Place
		8" Bitternut Hickory	23.16	231-00-00	4-2-90	R.M.		Sign Placed
		30" Double Forked Sugarmaple	2.71	231-00-00	4-2-90	R.M.		Sign Placed

3-4

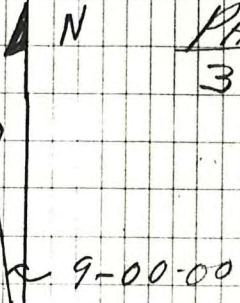
SPENCER T 25, R 3E
2X4" X-MARICED SW CORNER SE 1/4 SECTION
S TO NE 4-2-90 RON MANN
JERRY TOOLE
LARRY STELLER

PAGE 9
3-Y

DIETZGEN NO. 385-3

16" SUGAR MARLE

31.94



30" DOUBLE FORKED SUGAR MARLE

2.71

23.16
8" BITTERNUT HICKORY



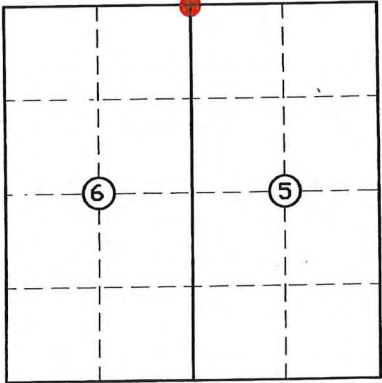
LAND CORNER RECORD
(RECTANGULAR SURVEYS)

5-A

Harrison County Surveyor's Reference Index Number: A-5

T 2 S R 3 E 2nd Mer., County Harrison State Indiana

North Section Corner common to Sections 5 and 6

EXISTING SURVEYS	
Picture/Sketch	Picture/Sketch
	
No Original Government Survey Evidence Recovered	Evidence of Subsequent Corner Restoration Found
See surveys recorded in Survey Book 4, Pages 83, 90 and 99 and in Instrument Number 201001904.	Year of search <u>2017</u> By <u>VHM</u> Recovered <u>0.6' X 0.3' pinnacle limestone, projecting 0.2', with steel pin with cap (L.S. 131) Northwest 0.25'.</u> Stone is at fence "L" corner to South and West.
	<p>Perpetuation Record</p> <p>Monument and accessories established. Include brief description of area. <u>Stone was left in place as recovered. The corner position is supported by very old and prominent cultural features in the vicinity and by measurements to adjacent corners. Corner accessories established:</u></p> <p><u>Fence Corner Post, S 20° E, 0.72' to bottom nail of Harrison County Surveyor's sign.</u></p> <p><u>Stone Y-5, N 87° W, 25.22'</u></p> <p>N: 1140463.26 E: 170407.09</p>
<p>Signature <u>Vint H. M.</u></p> <p>Date: <u>07/28/2017</u></p>	<p><u>Hansel K. Kline Surveyor 8-8-17</u></p>

HARRISON

COUNTY

5-E

CORNER 5-E

TOWNSHIP 2

RANGE 3

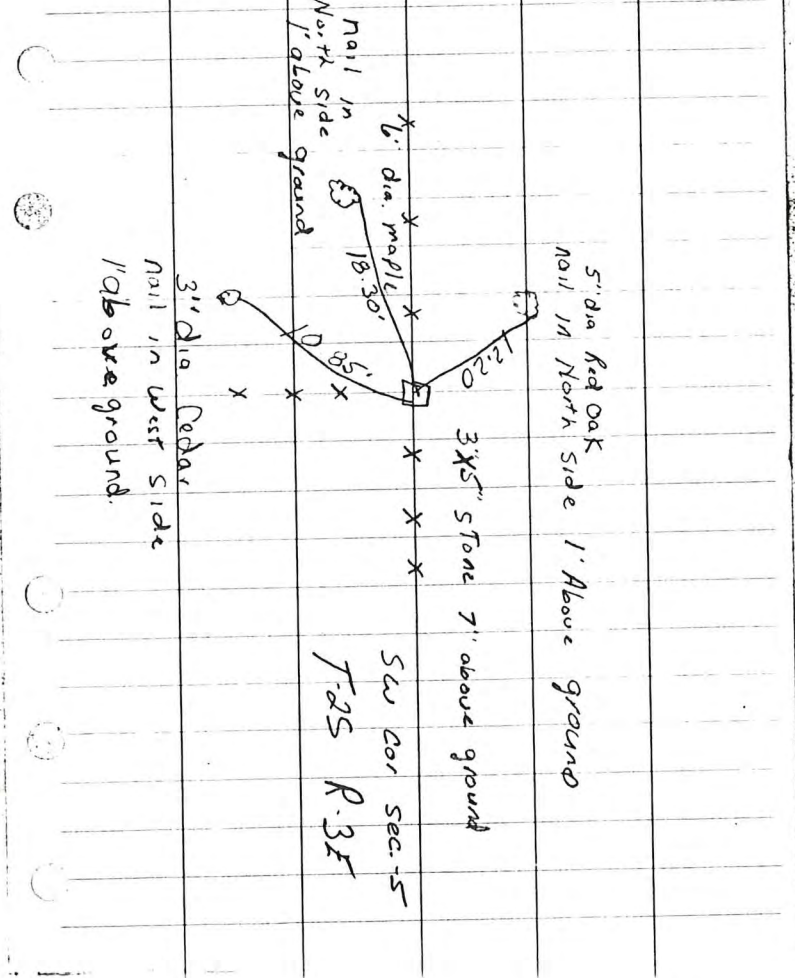
EAST

2ND

PRINCIPAL MERIDIAN

LOCATION	DESCRIPTION OF		DISTANCE FROM CORNER	BEARING FROM CORNER	DATE CHECKED	CHECKED BY	FIELD BOOK	REMARKS
	MONUMENT	REFERENCE						
STONE 3x5 7" ABOVE GROUND S.W. CORNER SECTION 5		5" RED OAK	12.20	NORTH	12-30-93	G.S.	#4Pg.45	SIGN PLACED
		3" CEDAR	10.85	WEST				SIGN PLACED
		6" MAPLE	18.30	NORTH				SIGN PLACED

5-E

	12-30-93	Reference	Stam	
Party Chief -	Greg Spears		Page 45	
Head Chairman -	Vince Gehlbach		5-E	
Res. Chairman -	Ron Cope			
	Nail in North side 1' above ground	6" dia maple		
	Nail in North side 1' Above ground	12.20	3' x 5' Stone 7' above ground	5" dia Red Oak Nail in North side 1' Above ground
	Nail in West side 1' above ground	5'	5' dia Cedar Nail in West side 1' above ground	
	3" dia Cedar Nail in West side 1' above ground	3'	5' dia	S.W. cor Sec. - 5 T. 25 R. 3 E


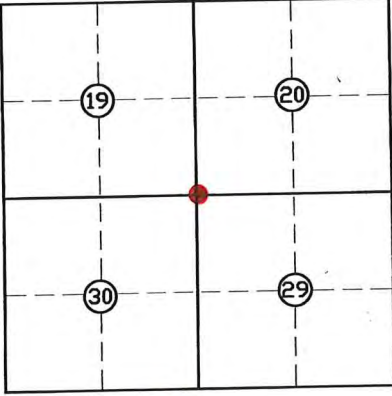
LAND CORNER RECORD
(RECTANGULAR SURVEYS)

5-Q

Harrison County Surveyor's Reference Index Number: Q-5

T 2 S R 3 E 2nd Mer., County Harrison State Indiana

Section Corner common to Sections 19, 20, 29 and 30

EXISTING SURVEYS	
<p>No Original Government Survey Evidence Recovered</p> <p>See survey recorded as Instrument Number 200801889.</p>	<p>Picture/Sketch</p> 
<p>Subsequent Corner Restoration</p>	<p>Evidence of Subsequent Corner Restoration Found</p>
<p>Year surveyed _____ By _____ Where filed or recorded _____ Monument _____ <small>(Original, concrete post, iron rod, etc...)</small></p> <p>Bearing Trees, Reference Objects</p> <p>Species _____ Diameter _____ Bearing _____ Distance _____</p>	<p>Year of search <u>2015</u> By <u>VHM</u> <u>Recovered existing #4 x 48" steel pin on East side of fence tee.</u></p>
	<p style="text-align: center;">Perpetuation Record</p> <p>Monument and accessories established. Include brief description of area. <u>Set a 3 1/2" aluminum disc stamped on exiting pin to depict the corner position.</u></p> <p>Corner accessories established:</p> <p><u>Centerline Highway 337, N 88° E, 70.0'.</u></p> <p><u>Cedar 10", N 88° E, 56.0', fence corner.</u></p> <p><u>Walnut 12", S 52° E, 27.2', MN in South crown root.</u></p> <p><u>Walnut 17", S 11° W, 8.2', MN +0.5' on East side.</u></p> <p><u>Rectangular Harrison County Surveyor's sign, South 1.0'</u></p> <p>N: 1119375.9 E: 169965.6</p> <p>Signature <u>Vick H. M.</u> Date: <u>Nov. 27, 2015</u></p> <p style="text-align: right;"><u>Nov. 30 2015 - Harold K. Kline</u></p>


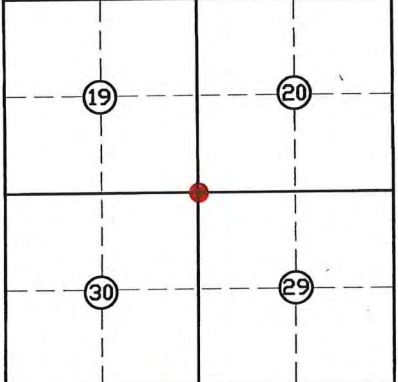
LAND CORNER RECORD
(RECTANGULAR SURVEYS)

5-Q

Harrison County Surveyor's Reference Index Number: Q-5

T 2 S R 3 E 2nd Mer., County Harrison State Indiana

Section Corner common to Sections 19, 20, 29 and 30

EXISTING SURVEYS	
<p>No Original Government Survey Evidence Recovered</p> <p>See survey recorded as Instrument Number 200801889.</p>	<p>Picture/Sketch</p> 
Subsequent Corner Restoration	Evidence of Subsequent Corner Restoration Found
<p>Year surveyed _____ By _____</p> <p>Where filed or recorded _____</p> <p>Monument _____ <small>(Original, concrete post, iron rod, etc...)</small></p> <p style="text-align: center;">Bearing Trees, Reference Objects</p> <p>Species _____</p> <p>Diameter _____</p> <p>Bearing _____</p> <p>Distance _____</p>	<p>Year of search <u>2015</u> By <u>VHM</u></p> <p>Recovered <u>existing #4 x 48" steel pin on East side of fence tee.</u></p>
	<p style="text-align: center;">Perpetuation Record</p> <p>Monument and accessories established. Include brief description of area. <u>Set a 3 1/2" aluminum disc stamped on exiting pin to depict the corner position.</u></p> <p>Corner accessories established:</p> <p><u>Centerline Highway 337, N 88° E, 70.0'.</u></p> <p><u>Cedar 10", N 88° E, 56.0', fence corner.</u></p> <p><u>Walnut 12", S 52° E, 27.2', MN in South crown root.</u></p> <p><u>Walnut 17", S 11° W, 8.2', MN +0.5' on East side.</u></p> <p><u>Rectangular Harrison County Surveyor's sign, South 1.0'</u></p> <p>N: 1119375.9</p> <p>E: 169965.6</p>
<p>Signature <u>Vicki H. M.</u></p> <p>Date: <u>Nov. 27, 2015</u></p>	<p style="text-align: right;"><u>Nov. 30 2015 Harold K. Kristman</u></p>

HARRISON

COUNTY

PRINCIPAL MERIDIAN

2ND

EAST

3

RANGE

2

TOWNSHIP

5-U

COPNER

5-U

LOCATION	DESCRIPTION OF		DISTANCE FROM CORNER	BEARING FROM CORNER	DATE CHECKED	CHECKED BY	FIELD BOOK	REMARKS
	MONUMENT	REFERENCE						
N.W. CORNER OF N.W. ¼ SECTION 32	STONE	OUT OF GROUND						
		4" MAPLE	8.5	N1-30'-W	1-18-95	G.S.	#4 Pg61	SIGN PLACED
		4" ASH	26.4'	S-1-30-W				SIGN PLACED
		6" BEECH	32.5'	N -77 ⁰ -W				SIGN PLACED

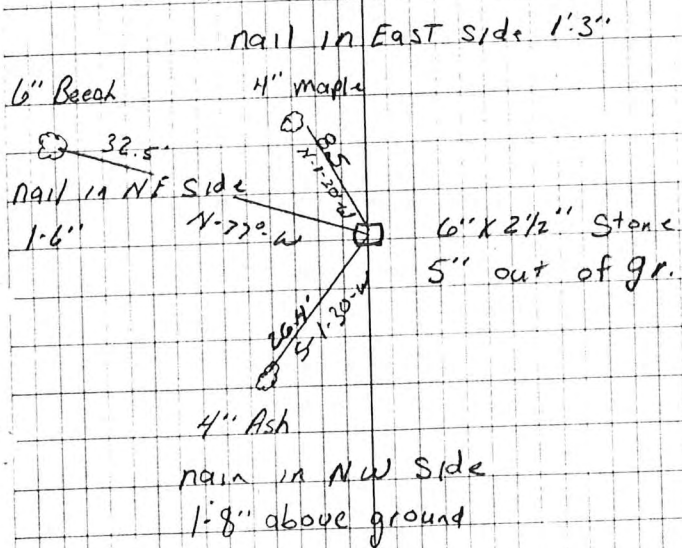
5-U

1-18-95 PAGE 61
5-U

Party Chief - Greg Spears
Chairman - John Shireman

N.W. Cor. of NW 1/4
Sec. - 32
T - 2-S
R - 3E

DIETZGEN NO. 385.3



HARRISON

COUNTY

CORNER 5-V

TOWNSHIP 2

RANGE 3

EAST 2ND

PRINCIPAL MERIDIAN

5-V

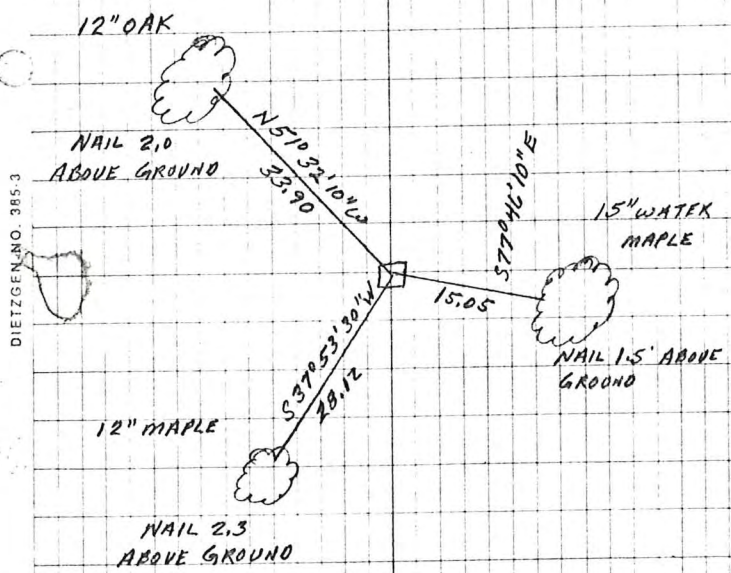
LOCATION	DESCRIPTION OF		DISTANCE FROM CORNER	BEARING FROM CORNER	DATE CHECKED	CHECKED BY	FIELD BOOK	REMARKS
	MONUMENT	REFERENCE						
S.W CORNER N.W $\frac{1}{4}$, N.W. $\frac{1}{4}$ SECTION 32	STONE	15" WATER MAPLE	15.05	S77°46'10"E	1-13-95	M.M.	#4PG.63	SIGN PLACED
		12' MAPLE	28.12	S37°53'30"W				SIGN PLACED
		12' OAK	33.90	N51°32'10"W				SIGN PLACED

5-V

1-13-95 Page 63

STONE @ SW COR.
OF THE NW 1/4
OF THE NW 1/4 OF
SEC # 32 T25R3E

P. M. MOSES 5-V
H. R. MILLS
R. C. D. HUMPHREY



HARRISON

COUNTY

5-Y

CORNER 5-Y TOWNSHIP 2 RANGE 3 EAST 2ND PRINCIPAL MERIDIAN

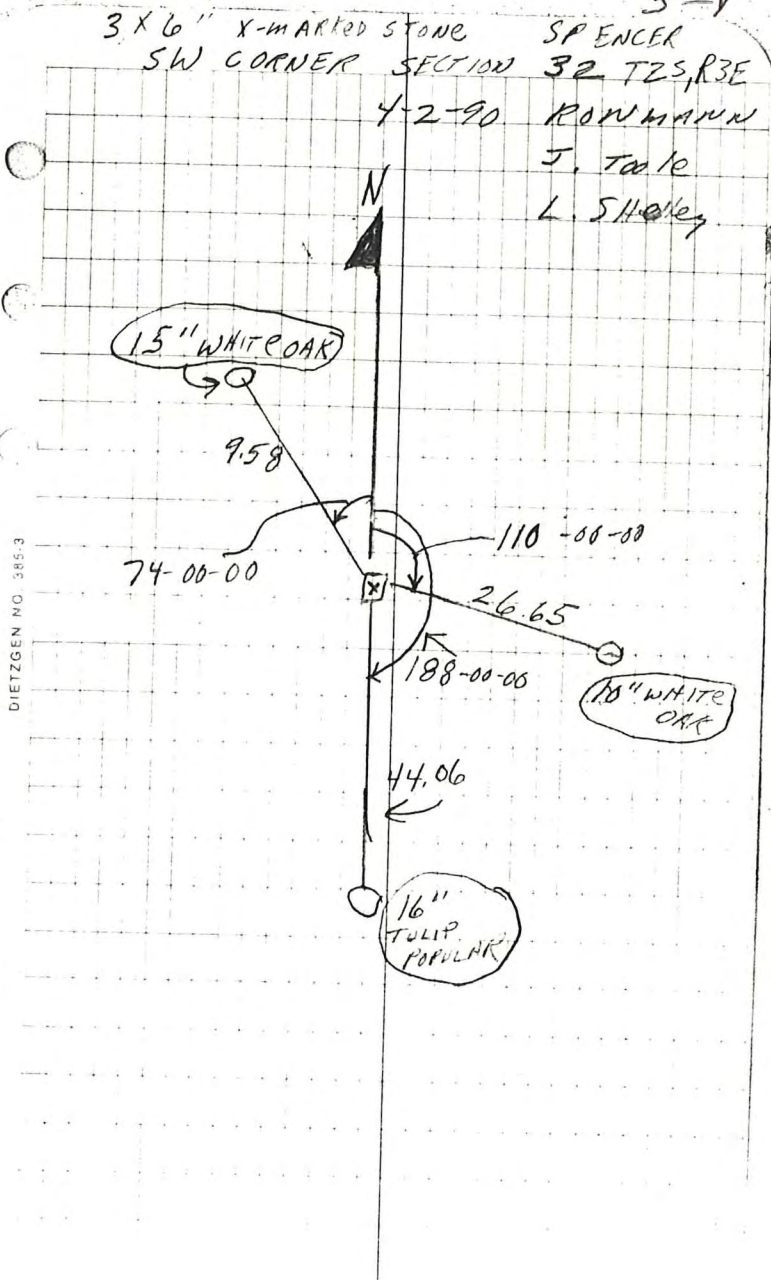
LOCATION	DESCRIPTION OF		DISTANCE FROM CORNER	BEARING FROM CORNER	DATE CHECKED	CHECKED BY	FIELD BOOK	REMARKS
	MONUMENT	REFERENCE						
S.W. Corner Section 32	Stone	15" White Oak	9.58	74-00-00	4-2-90	R.M. #4 Pg. 10		Sign Placed
		10" White Oak	26.65	110-00-00	4-2-90	R.M.		Sign Placed
		16" Tulip Popular	44.06	188-00-00	4-2-90	R.M.		Sign Placed

5-4

Page 10

5-V

3 X 6" X-MARKED STONE SPENCER
SW CORNER SECTION 32 T2S, R3E
4-2-90 ROWMANN
J. TALLE
L. SHOLEY



HARRISON

COUNTY

CORNER 6-V

TOWNSHIP 2

2

RANGE 3

EAST

2ND

PRINCIPAL MERIDIAN

6-V

LOCATION	DESCRIPTION OF		DISTANCE FROM CORNER	BEARING FROM CORNER	DATE CHECKED	CHECKED BY	FIELD BOOK	REMARKS
	MONUMENT	REFERENCE						
S.E. CORNER N.W. 1/4 N.W. 1/4 SECTION 32	STONE IS OUT OF GROUND		6" AND COMES TO A POINT					
	4" MAPLE		42.9'	N-20-E	1-18-95	G.S.	#4 Pg. 62	SIGN PLACED
	3" MAPLE		30.2'	N-80 ⁰ -E				SIGN PLACED
	6" MAPLE		38.7'	S 5 ⁰ -E				SIGN PLACED

6-V

1-18-95

Page 62

Party Chief Greg Spears
Chairman - John Shireman

6-V

SE cor. NW 1/4 NW 1/4

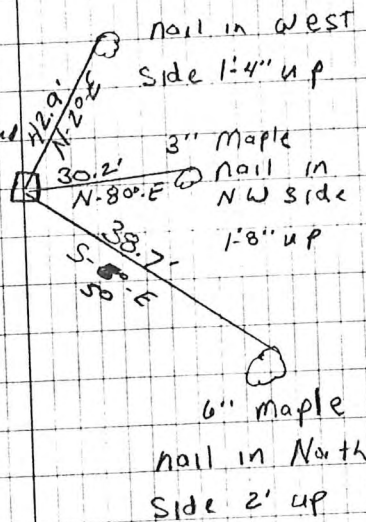
Sec. - 32

T. 2 S

R. 3-E

4" maple

Stone is out of ground
6" and comes to
a point.



DIETZGEN NO. 3853

HARRISON

COUNTY

CORNER 7- I

TOWNSHIP 2

RANGE 3

EAST

2ND PRINCIPAL MERIDIAN

LOCATION	DESCRIPTION OF		DISTANCE FROM CORNER	BEARING FROM CORNER	DATE CHECKED	CHECKED BY	FIELD BOOK	REMARKS
	MONUMENT	REFERENCE						
S.W. CORNER S.E. 1/4 SECTION 8	STONE 6"	ABOVE GROUND						
		10" POPLAR	25.1'	WEST	12-30-93	G.S.	#4Pg.46	SIGN PLACED
		7" SASSFRAS	13.0'	WEST				SIGN PLACED
		8" POPLAR	38.8'	EAST				SIGN PLACED

CC M-S

CC TTY

HARRISON

CORNER 7 S TOWNSHIP 2 S RANGE 3 E EAST 2ND PRINCIPAL MERIDIAN

LOCATION	DESCRIPTION OF		DISTANCE FROM CORNER	BEARING FROM CORNER	DATE CHECKED	CHECKED BY	FIELD BOOK	REMARKS
	MONUMENT	REFERENCE						
Center $\frac{1}{4}$ Corn. Sec. 29	6x15 Stone	18" Hickory	24.6"	N 90 W	5/09	TOB	6/9	
		12" Hickory	10.8'	S 85 E				
		2' Oak	27.6'	S 20 W				

4-8

HARRISON COUNTY SURVEYOR ^{6/9}
CORNER MONUMENT RECOVERY & REFERENCE RECORD

TWNSHIP: 2 RANGE: 3 SECTION: 29 CORNER REF. LD.: 7.5
DATE: 4/1/09

MONUMENT INFORMATION

LOCATION: CENTER 1/4 CORNER - SEC 29

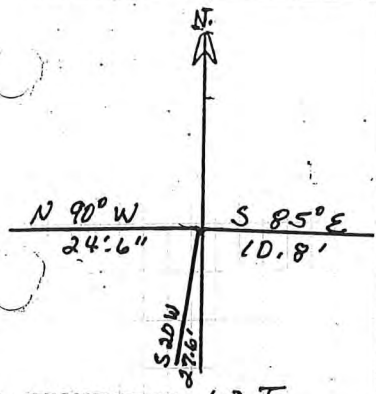
DESCRIPTION: 6 x 15 STONE

ADDITIONAL DISTINGUISHING CHARACTERISTICS: _____

SIGN PLACED: () YES DATE: 1/1/

WITNESS MARKERS

TYPE	SIGN	BLAZE	ADDITION DESCRIPTION
1. 1 1/2" HICKORY	()	()	24.6' N 90° W
2. 1 1/2" HICKORY	()	()	10.8' S 85° E
3. 2" OAK	()	()	27.6' S 20° W



1	2	3	4	5	6	7	8	9	10	11	12	13	14	15	16	17	18	19	20	21	22	23	24
25	26	27	28	29	30	31	32	33	34	35	36	37	38	39	40	41	42	43	44	45	46	47	48

RECOVERED BY: WT

DATE: 4/1/09
DATE:
DATE:

REFERENCED BY: T.O.B

DATE: 5/1/09
DATE:
DATE:

RECORDED IN PERPETUATION RECORDS BOOK:
BY: Thomas E. Rube

DATE: 5/28/09

8-S

CORNER 8-S

TOWNSHIP 2 SOUTH

RANGE 3 EAST

2 ND PRINCIPAL MERIDIA

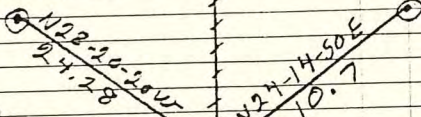
LOCATION	DESCRIPTION OF		DISTANCE FROM CORNER	BEARING FROM CORNER	DATE CHECKED	CHECKED BY	FIELD BOOK	REMARKS
	MONUMENT	REFERENCE						
S.W. Cor. S.E. 1/4, N.E. Sec. 29	Stone	13" Black Oak	10.7	N24-14-50E	4-18-83	T.B.	#2 Pg 30	Sign Placed
AT SW Corner, SE 1/4 NE 1/4 Sec 29 Stone is 1.0x.50x.50 Cent of Ground Stone is marked w nails Post + Sign (Sandstone)		12" Double Hickory	20.1	N68-29-10W	4-18-83	T.B.		Sign Placed
		16" Double White Oak	24.28	N28-20-20W	4-18-83	T.B.		Sign Placed

NORTH

8-8

1.40 & double white oak,
nail is on the west side
± 1.70 up.

1.10 & Black oak, nail is on
the west side ± 1.45 up.



1.0 & double Hickory,
nail is on the
north side ± 1.20 up.

Stone is 1.0 X .50 X .50 out of
ground X in Top.

All trees have a blaze with
a aluminum nail in middle.

Stone is marked with the metal
post & sign (Sand Stone)

All trees have a witness sign
to 100 rings painted around
T.

Party Chief T. Brown
Date 4-18-33

Head Chain M. Moses

S.W. cor. ~~SE~~ SE 1/4, NE 1/4

Rear Chain A. Clements

sect. 29 T2S, R3E

188189

HARRISON

COUNTY

CORNER 9 - D

TOWNSHIP 2

RANGE 3

EAST

2ND

PRINCIPAL MERIDIAN

LOCATION	DESCRIPTION OF		DISTANCE FROM CORNER	BEARING FROM CORNER	DATE CHECKED	CHECKED BY	FIELD BOOK	REMARKS
	MONUMENT	REFERENCE						
N.W. CORNER S.W. $\frac{1}{4}$ S.W. $\frac{1}{4}$ SECTION 4	STONE 6"x6"	8" ABOVE GROUND						
		7" SASSAFRAS	12.7'	EAST	1-5-94	G.S.	#4 Pg44	SIGN PLACED
		6" SASSAFRAS	11.25	SOUTHWEST				SIGN PLACED
		NAIL ABOVE GROUND	12.04	EAST				SIGN PLACED

9-D

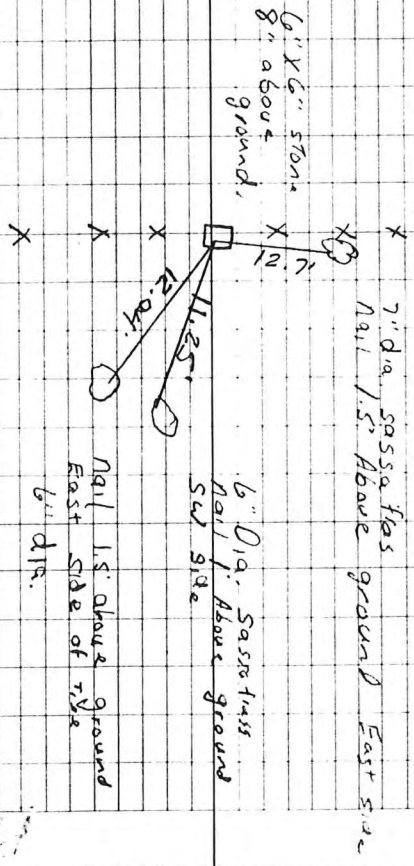
Page 44

1-5-94 Stone & Pierce

Party chf. - Greg Spears 9D
H. Chairman - Vince Behlbach
P. Chairman - R. Crone

NW cor of the SW quarter
of the SW quarter Sec. 4 - T4S -
R3E

DIETZGEN NO 3853



LAND CORNER RECORD
(RECTANGULAR SURVEYS)

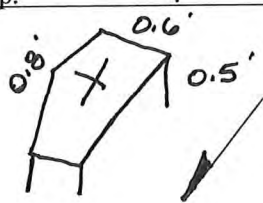
O-9

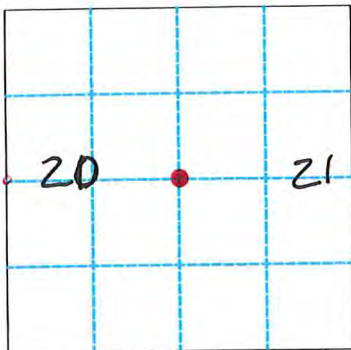
Harrison Co. No. O-9

T 2 S R 3 E 2nd Principal Meridian County Harrison State Indiana

Quarter Corner common to Sections 20 and 21

EXISTING SURVEYS

Original Government Survey	Original Evidence Found
Year surveyed _____ Original monument _____ <small>(wood post, stone, pile of stones, etc.)</small> <hr/> Bearing Trees Species _____ Diameter _____ Bearing _____ Distance _____	Year of search _____ By _____ Monument found _____ <hr/> Original Bearing Trees Found Species _____ Diameter _____ Bearing _____ Distance _____
Subsequent Corner Restoration	Evidence of Subsequent Corner Restoration Found
Year surveyed _____ By _____ Where filed or recorded _____ Monument _____ <small>(Original, concrete post, iron rod, etc...)</small> <hr/> Bearing Trees, Reference Objects Species _____ Diameter _____ Bearing _____ Distance _____	Year of search <u>2001</u> By <u>VHM</u> Recovered <u>0.8' by 0.6' limestone, projecting 0.5', with</u> <u>"+" cut on top.</u> 



Relation of Evidence to Record Features Along Section Lines

Section line to sections _____
 Object _____
 Record Distance _____
 Measured Distance _____

Other Evidence

Describe evidence of use and occupation such as roads, fences, clearings, timber cutting lines, plantations, etc... Cite source of testimony, If any. Stone is situated East and South of fence corner.

Perpetuation Record

Monument and accessories established. Include brief description of area. Stone left as recovered. Set a steel witness post 1' Northeast of stone.

Snag _____

8"

West _____

3.5'

Certified corner restoration certificate prepared Yes _____ No _____
 Filed in County records at Survey Book 5, Page 96

At time of search:

- Did you have the record description? Yes X No _____
- How was search area located?
pacing, chaining, photo, maps, etc. SURVEYING
- Man hours spent in search N/A
- Do you think additional search might recover evidence? Yes _____
No X
- Signature Vit N.M.

9-P

HARRISON

COUNTY

CORNER 9-P

TOWNSHIP 2

RANGE 3 EAST

2ND

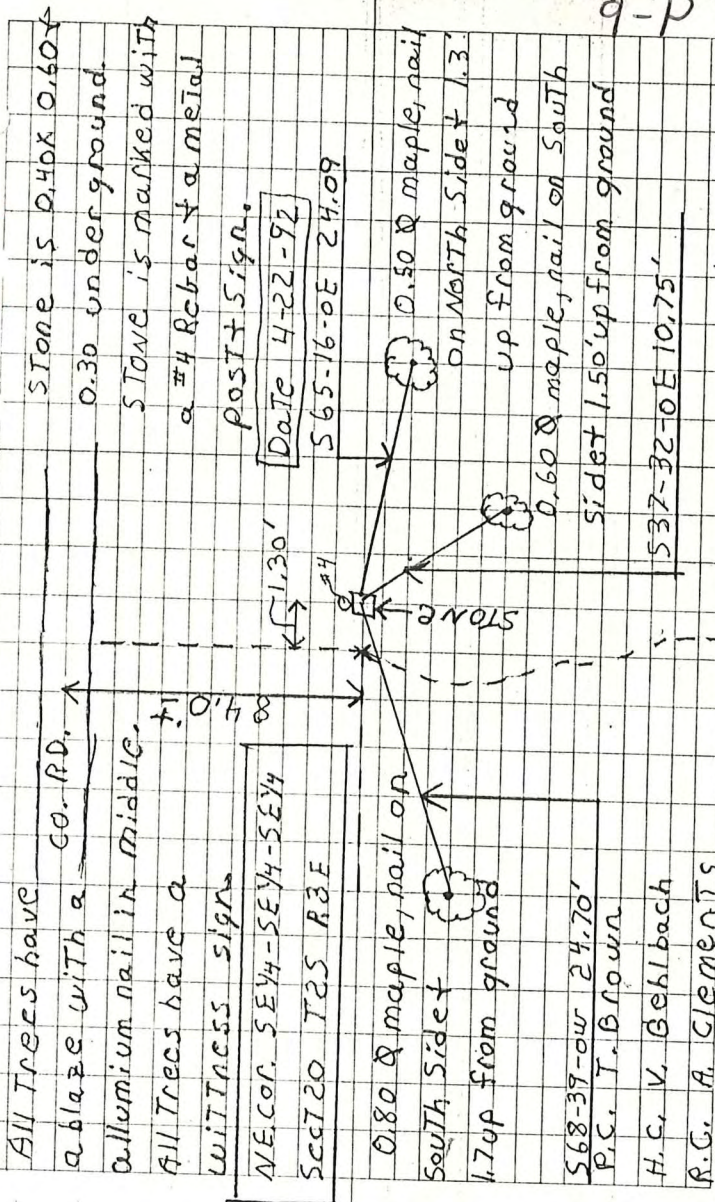
PRINCIPAL MERIDIAN

LOCATION	DESCRIPTION OF		DISTANCE FROM CORNER	BEARING FROM CORNER	DATE CHECKED	CHECKED BY	FIELD BOOK	REMARKS
	MONUMENT	REFERENCE						
N.E. COR. SE $\frac{1}{4}$, SE $\frac{1}{4}$, SE $\frac{1}{4}$ SEC. 20	Stone marked	#4 rebar	24.09	S65-16-0E	4-22-92	T.B.	#4 Pg. 34	Sign Placed
	Metal post	.50" Maple						
		.60" Maple	10.75	S32-32-0E				Sign Placed
		.80" Maple	24.70	S68-39-0W				Sign Placed

Stone is 0.4 X 0.60 X
 0.30 underground.
 Stone is marked with
 a # 4 Rebar & a Metal Post
 & Sign -

9-P

DIETZ NO. 385-3



Stone is 0.40x 0.60x
0.30 under ground.
Stone is marked with
a #4 Rebar & a metal
post & sign.

Date 4-22-92
S 65-16-0E 24.09

0.50 Ø maple, nail
on North Side & 1.3'
up from ground
0.60 Ø maple, nail on South
side & 1.50' up from ground

S 37-32-0E 10.75'

All trees have
a blaze with a
aluminum nail in middle.
All trees have a
whitiness sign.

NE. cor. SE 1/4 - SE 1/4 - SE 1/4
S 65-20 T 25 R 3 E

0.80 Ø maple, nail on
South side & 1.70'
from ground

S 68-39-0W 24.70'
P.S. T. Brown
H.C. V. Behlbach
R.G. A. Clements

9-Q

HARRISON COUNTY

RANGE 3 EAST 2 ND PRINCIPAL MERIDIAN

TOWNSHIP 2 SOUTH

CORNER 9-0

LOCATION	DESCRIPTION OF MONUMENT		DISTANCE FROM CORNER	BEARING FROM CORNER	DATE CHECKED	CHECKED BY	FIELD BOOK	REMARKS
	MONUMENT	REFERENCE						
S.W. Corner Section 21	Stone	12" Maple	9.6	N29-27-50E	7-7-82	T.B.	#2 Pg.8	Sign Placed
		13" Maple	22.8	S18-43-20W	7-7-82	T.B.		Sign Placed
		19" Maple	32.30	N65-54-0W	7-7-82	T.B.		Sign Placed

Stone is .50 X .50

X.50 out of ground

Stone is marked w

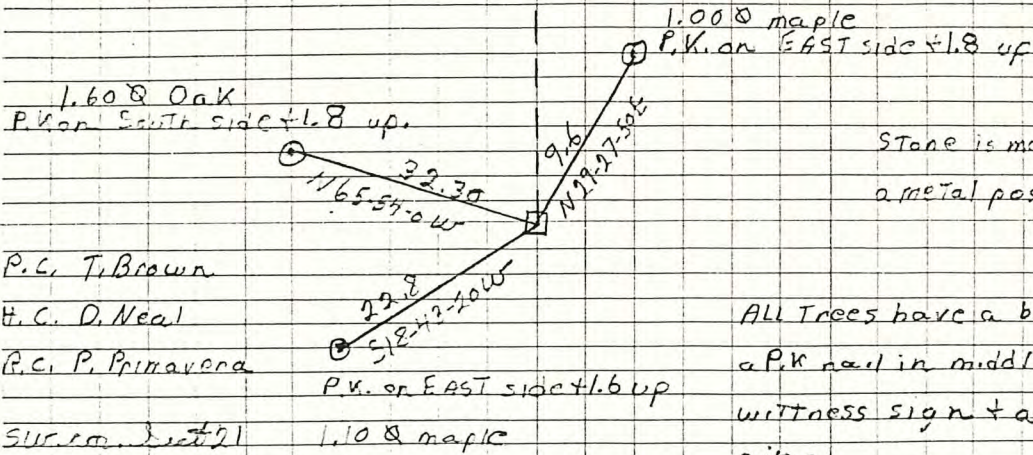
Metal Post + Signs

Date 7-7-22



9-Q

Stone is 5.50 x .50
x .50 out of ground



1.60 @ Oak
P.K. on EAST side 1.8 up

1.00 @ maple
P.K. on EAST side 1.8 up

Stone is marked with
a metal post & sign

P.C. T. Brown

H.C. D. Neal

R.C. P. Primavera

P.K. on EAST side 1.6 up

ALL Trees have a blaze with
a P.K. nail in middle & a
witness sign & a blue
ring

SUR. CO. Sect 21

1.10 @ maple

T 25, R 3 E

9-Q

PAGE 8
9-Q

HARRISON

COUNTY

PRINCIPAL MERIDIAN

2ND

EAST

3

RANGE

2

TOWNSHIP

CORNER 9-R

9-R

LOCATION	DESCRIPTION OF		DISTANCE FROM CORNER	BEARING FROM CORNER	DATE CHECKED	CHECKED BY	FIELD BOOK	REMARKS
	MONUMENT	REFERENCE						
N.E. COR. SE 1/4, NE 1/4, Sect. 29,	stone underground	has X on top	marked with	#4' rebar & metal Post & sign				
	.40" dogwood	28.30	N42-10-OE	4-22-92	T.E.	#4 Pg35	Sign Placed	
	.40' dogwood	11.18	N62-01-OW				Sign Placed	
	.30 dogwood	33.94	N16-16-OW				Sign Placed	

Stone is 0.66 X 0.40 X
 0.50 underground
 Stone has X in top
 Stone is marked with a
 # Rebar + metal Post + Sign

9-R

DIETZEN 385-3

0.30 dogwood, nail on
ON EAST side

1.3' up from ground
N16-16-0W 33.97

0.40 dogwood, nail on
North side 1.25 from
ground N62-01-0W 11.18

#4
STONE
All trees have a blaze with
a aluminum in middle. All trees
have a witness sign.

STONE is 0.60 x 0.40 x 0.30
under ground. Stone has X
in top. Stone is marked
with a #4 Rebar & a metal post & sign

0.70 dogwood, nail on
South side 1.3' up
from ground
N42-10-0E 28.301

DATE 4-22-92

P.C. T. Brown
H.C. V. Gehlbach
R.S. A. Clements

N.E. Cor. SE 1/4 - NE 1/4
SECT 29 T 25 R 3 E

HARRISON

CITY

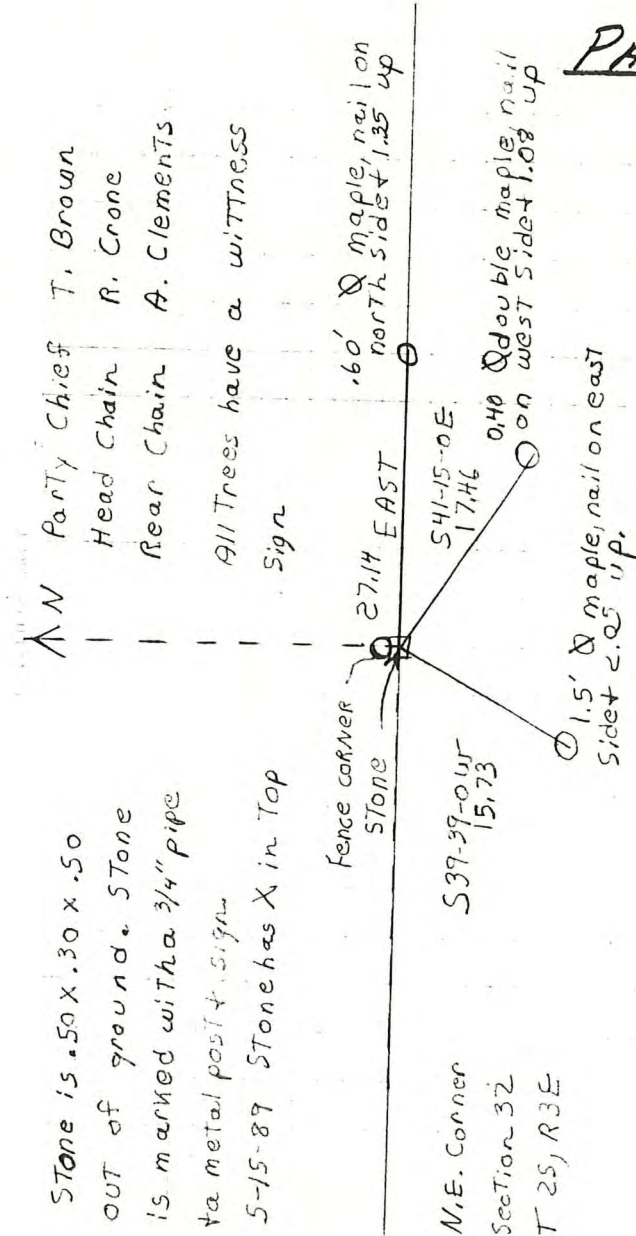
COPNER 9-U TOWNSHIP 2 RANGE 3 EAST 2ND PRINCIPAL MERIDIAN

LOCATION	DESCRIPTION OF		DISTANCE FROM CORNER	BEARING FROM CORNER	DATE CHECKED	CHECKED BY	FIELD BOOK	REMARKS
	MONUMENT	REFERENCE						
N.E. Corner Section 32	Stone marked with 3/4"							
	.60' Maple		27.14	East	5-15-89	T.B.	#3 Pg. 49	Sign Placed
	0.40 double Maple		17.46	S41-15-0E	5-15-89	T.B.		Sign Placed
	1.5' Maple		15.73	S39-39-0W	5-15-89	T.B.		Sign Placed

fence corner Stone

*Stone is .50 X .30 X .50
cut & found. Stone is
marked w/a 3/4" pipe
& a metal post & sign
5-15-89 Stone has X in
top*

9-U



PAGE 49.
9-U

LAND CORNER RECORD
(RECTANGULAR SURVEYS)

13-A

Harrison Co. No. A-13

T 2 S R 3 E 2nd Principal Meridian County Harrison State Indiana

Section Corner to Sections 3 and 4 on Township Line

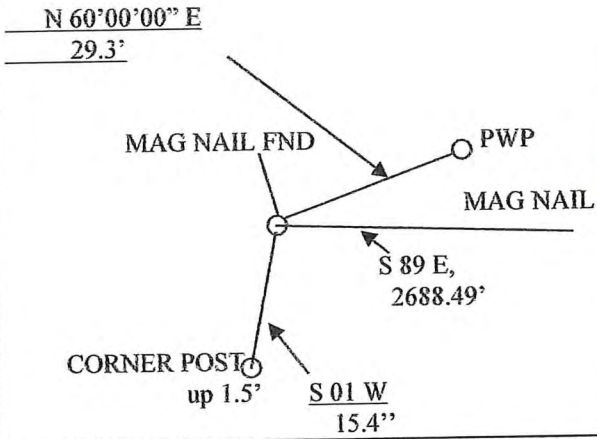

EXISTING SURVEYS																					
Original Government Survey	Original Evidence Found																				
Year surveyed <u>1805</u> Original monument <u>Wood Post</u> <small>(wood post, stone, pile of stones, etc.)</small> <hr/> <p style="text-align: center;">Bearing Trees</p> Species _____ Diameter _____ Bearing _____ Distance _____	Year of search <u>N/A</u> By _____ Monument found _____ <hr/> <p style="text-align: center;">Original Bearing Trees Found</p> Species _____ Diameter _____ Bearing _____ Distance _____																				
Subsequent Corner Restoration	Evidence of Subsequent Corner Restoration Found																				
Year surveyed _____ By _____ Where filed or recorded _____ Monument _____ <small>(Original, concrete post, iron rod, etc...)</small> <hr/> <p style="text-align: center;">Bearing Trees, Reference Objects</p> Species _____ Diameter _____ Bearing _____ Distance _____	Year of search <u>1998</u> By <u>VHM</u> <u>Recovered P.K. nail in road intersection.</u>																				
<div style="border: 1px solid black; padding: 5px; width: fit-content; margin: 0 auto;"> </div>	<p style="text-align: center;">Relation of Evidence to Record Features Along Section Lines</p> Section line to sections _____ Object _____ Record Distance _____ Measured Distance _____ <hr/> <p style="text-align: center;">Other Evidence</p> Describe evidence of use and occupation such as roads, fences, clearings, timber cutting lines, plantations, etc... Cite source of testimony, If any. <u>Monument is situated on Township Line at intersection of North Road and Totten Ford Road.</u> <hr/> <p style="text-align: center;">Perpetuation Record</p> Monument and accessories established. Include brief description of area. <u>Set a magnetic road nail over a P.K. Nail in asphalt, flush with pavement.</u> <table border="1" style="width: 100%; border-collapse: collapse; margin-top: 5px;"> <tr> <td style="text-align: center;">Elm</td> <td style="text-align: center;">Utility</td> <td style="text-align: center;">Utility</td> <td style="text-align: center;">Steel pin W/cap</td> </tr> <tr> <td style="text-align: center;">35"</td> <td style="text-align: center;">Pole</td> <td style="text-align: center;">Pole</td> <td style="text-align: center;">W/carsonite post</td> </tr> <tr> <td style="text-align: center;">S 74° W</td> <td style="text-align: center;">N 9° E</td> <td style="text-align: center;">S 82° E</td> <td style="text-align: center;">N 88° W</td> </tr> <tr> <td style="text-align: center;">21.8'</td> <td style="text-align: center;">82.2'</td> <td style="text-align: center;">21.3'</td> <td style="text-align: center;">38.58'</td> </tr> <tr> <td colspan="4" style="text-align: center;">W/sign</td> </tr> </table> <hr/> Certified corner restoration certificate prepared Yes _____ No _____ Filed in County records at <u>Survey Book 3, Page 519</u>	Elm	Utility	Utility	Steel pin W/cap	35"	Pole	Pole	W/carsonite post	S 74° W	N 9° E	S 82° E	N 88° W	21.8'	82.2'	21.3'	38.58'	W/sign			
Elm	Utility	Utility	Steel pin W/cap																		
35"	Pole	Pole	W/carsonite post																		
S 74° W	N 9° E	S 82° E	N 88° W																		
21.8'	82.2'	21.3'	38.58'																		
W/sign																					
<p>At time of search:</p> 1. Did you have the record description? Yes <u>X</u> No _____ 2. How was search area located? pacing, chaining, photo, maps, etc. <u>SURVEYING</u> 3. Man hours spent in search <u>N/A</u> 4. Do you think additional search might recover evidence? Yes _____ No <u>X</u> 5. Signature <u>Vit H. M.</u>	<p>N: 1140026.0 ISPCS, East Zone, 1983 Datum (1998) E: 181130.2 US Survey Foot</p>																				

LAND CORNER RECORD
(RECTANGULAR SURVEYS)

Harrison County Surveyor's Reference Index Number: 13-Q

T 2 S R 3 E 2nd Mer., County Harrison State Indiana

Section Corner common to Sections 27 and 28

EXISTING SURVEYS	
Picture/Sketch	Picture/Sketch
 <p style="text-align: center;">NW Corner Section 27-2-3</p>	
No Original Government Survey Evidence Recovered	Evidence of Subsequent Corner Restoration Found
	Year of search <u>2018</u> By <u>WPM</u> _____ _____ _____
<div style="border: 1px solid black; width: 150px; height: 100px; margin: 0 auto; text-align: center; padding: 5px;"> NW Corner Section 27-2-3 </div> <p>Signature: <u>[Handwritten Signature]</u> Date: <u>10/5/18</u></p>	<p style="text-align: center;">Existing Section Corner Notes References for: NW Corner Section 27-2-3</p> <p>Monument and accessories established. Include brief description of area. <u>Mag nail found in Fairdale Rd.</u> <u>Ref #1= sign in N side of 1 ft. round corner post bottom nail 1.5 ft up from ground</u> <u>S 1 W, 15.4 ft</u> <u>Ref #2= sign in SW side of pwp 1.5 ft up from ground</u> <u>N 60 E, 29.3 ft</u> <u>Ref #3= mag nail found at north 1/4 corner</u> <u>S 89 E, 2688.49</u> See recorded survey inst #200207550</p> <p>ISPCS-EZ-U.S.Survey Feet N: 1118785.26 E: 180681.97</p>

LAND CORNER RECORD
(RECTANGULAR SURVEYS)

Harrison County Surveyor's Reference Index Number: 13-0

T 2 S R 3 E 2nd Mer., County Harrison State Indiana

Section Corner common to Sections 27 and 28

EXISTING SURVEYS	
Picture/Sketch	Picture/Sketch
<p>14" GUM TREE N 61 W, 46'</p> <p>MAG NAIL FND</p> <p>MAG NAIL</p> <p>S-88 E, 2663.80'</p> <p>8" C. POST S 9 W, 17.8'</p>	
No Original Government Survey Evidence Recovered	Evidence of Subsequent Corner Restoration Found
	Year of search <u>2018</u> By <u>WPM</u> _____ _____ _____
<div style="border: 1px solid black; width: 150px; height: 100px; margin: auto; display: flex; align-items: center; justify-content: center;"> SW Corner Section 27-2-3 </div>	<p style="text-align: center;">Existing Section Corner Notes References for: SW Corner Section 27-2-3</p> <p>Monument and accessories established. Include brief description of area. <u>Mag nail found in Lost Creek Rd. NW</u></p> <p><u>Ref #1= sign in N side of 8 in round corner post</u> <u>S 9 W, 17.8 ft</u></p> <p><u>Ref #2= sign in SE side of 14 in gum tree</u> <u>N 61 W, 46 ft</u></p> <p><u>Ref #3= mag nail found at south 1/4 corner</u> <u>S 88 E, 2663.80</u></p> <p><u>See recorded survey inst #200207550</u></p>
Signature <u>[Handwritten Signature]</u> Date: <u>10/5/18</u>	ISPCS-EZ-U.S.Survey Feet N: 1113507.33 E: 108530.56

HARRISON COUNTY

CORNER 15-A TOWNSHIP 2 SOUTH RANGE 3 EAST 2 ND PRINCIPAL MERIDIAN

15-A

LOCATION	DESCRIPTION OF MONUMENT		DISTANCE FROM CORNER	BEARING FROM CORNER	DATE CHECKED	CHECKED BY	FIELD BOOK	REMARKS
	MONUMENT	REFERENCE						
N.W. Corner N.E. 1/4 Section 3	Stone	29" Oak	10.33	North	7-23-81	T.B.	#1 24.46	Sign Placed
		7" Double Cherry	4.80	S61-43W	7-23-81	T.B.		Sign Placed

Stone is .65 X 1.1 X 3.85
 Out of ground
 Stone is painted at top
 Stone is marked with
 a Metal Post + Sign 1.00'
 South -
 Top of Stone is painted
 red

15-A

A-15

DIETZGEN NO. 385-3

Date 7-23-81

Party Chief T. Brown

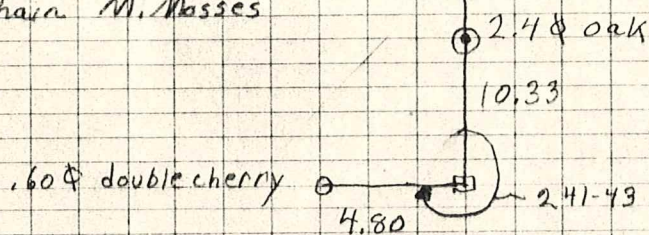
Head Chain C. Mathes

Rear Chain M. Masses

NORTH

NW. Cor. NE 1/4 Sect. 8

T23 R3E



Both trees have a blaze mark with a aluminum nail in middle.

Both trees a witness sign a red ring 6.00' above ground

Stone is .65 x 1.1 x 3.85' out of ground. Stone is pointed at top.

Stone is marked with a metal post + sign 1.00' South.

Top of Stone is painted red

16-A

HARRISON COUNTY

CORNER 16-A TOWNSHIP 2 SOUTH RANGE 3 EAST 2 ND PRINCIPAL MERIDIAN

LOCATION	DESCRIPTION OF MONUMENT		DISTANCE FROM CORNER	BEARING FROM CORNER	DATE CHECKED	CHECKED BY	FIELD BOOK	REMARKS
	MONUMENT	REFERENCE						
N.E. Corner W. 1/2 N.E. 1/4 Section 3	Stone	8" Oak	29.63	S80-31E	7-23-81	T.B.	#1 Pg. 45	Sign Placed
		6" Cedar	28.98	S68-21E	7-23-81	T.B.		Sign Placed
		17" Double Oak	6.10	S47-49W	7-23-81	T.B.		Sign Placed

Stone is .65 x .65 + is painted at top Stone is painted red + is marked w/a metal fast sign
1.00 North

16-A

16A

DIETZGEN NO. 385-3

Date 7-23-81

Party Chief T. Brown

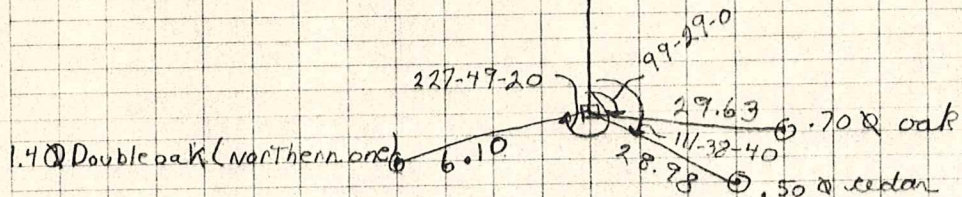
Head Chain C. Matthes

Rear Chain M. Masse

NE Cor. W¹/₂, NE¹/₄ Sect 3

T25, R3E

NORTH



All trees have a blaze mark with a alum nail in middle. All trees have a witness sign + a red ring 6.00' above ground.

Stone is .65 x .65 + is painted at top. Stone is painted red + is marked with a metal post + sign 1.00' north.

16-C

CORNER RECORD

PAGE

HARRISON COUNTY

CORNER 16-c, TOWNSHIP 2 SOUTH

RANGE 3 EAST 2 ND PRINCIPAL MERIDIAN

LOCATION	DESCRIPTION OF MONUMENT		DISTANCE FROM CORNER	BEARING FROM CORNER	DATE CHECKED	CHECKED BY	FIELD BOOK	REMARKS
	MONUMENT	REFERENCE						
S.E. Corner W. 1/4 N.E. 1/4 Section 3	Stone	16" Poplar	24.83	N29-15E	7-23-81	T.B.	#/2.47	Sign Placed
		Tree	29.10	N39-32E	7-23-81	T.B.		Sign Placed
		24" Oak	9.48	West	7-23-81	T.B.		Sign Placed

~~Stone is lying down next to fence corner ?~~

Stone is lying down next to fence corner ?

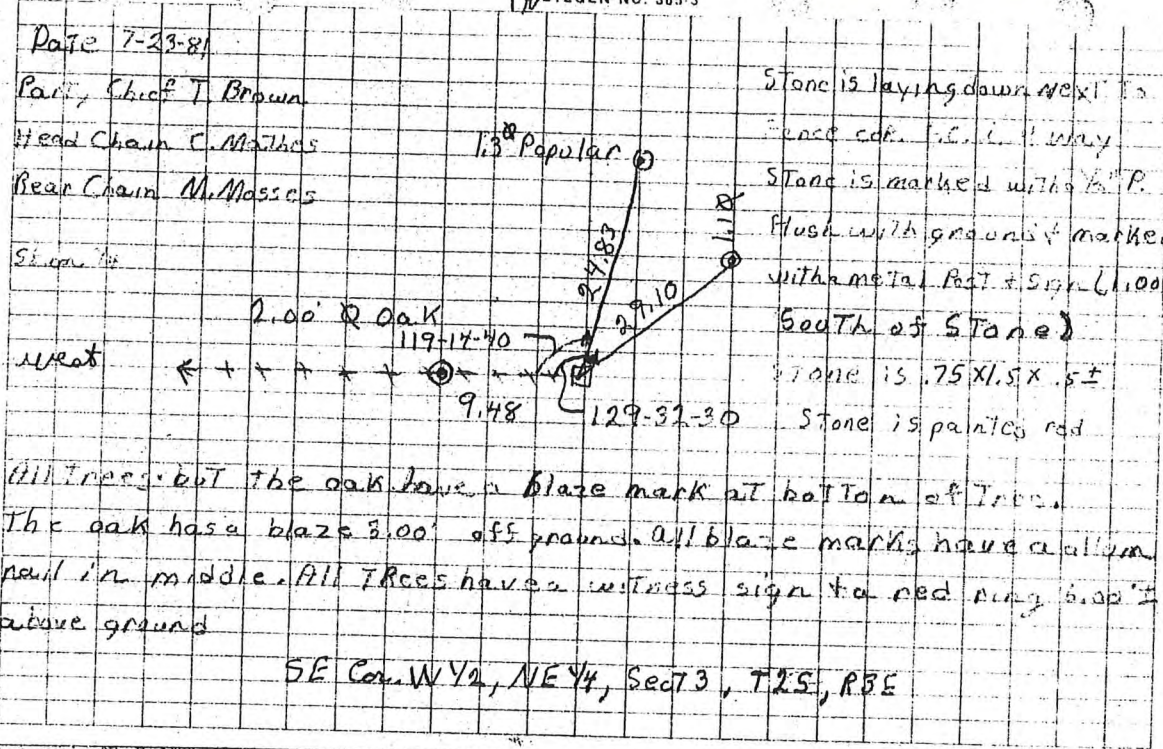
Stone is marked w

Flunk with ground & marked w/a metal post & (Sign 1.00' South of Stone)

C-16

16-C

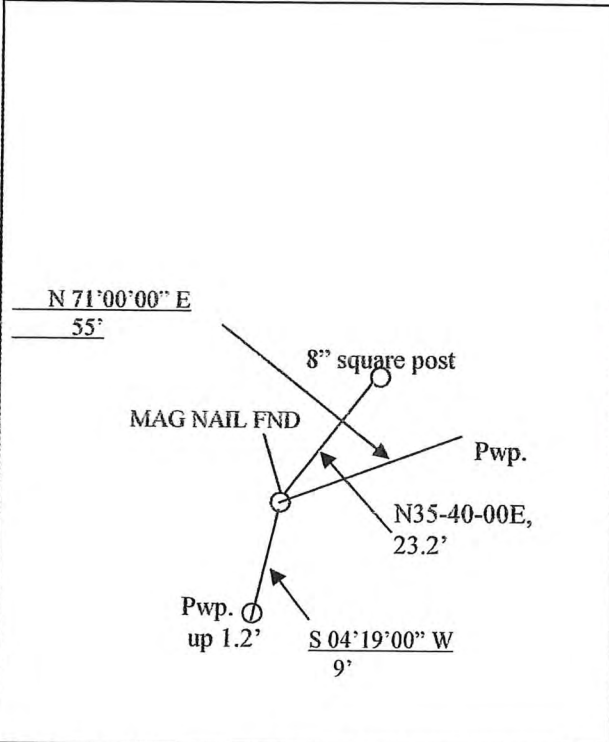

NETZGEN NO. 385-3



17-U

©

LAND CORNER RECORD
(RECTANGULAR SURVEYS)

Picture/Sketch	Picture/Sketch
	
No Original Government Survey Evidence Recovered	Evidence of Subsequent Corner Restoration Found
	Year of search <u>2018</u> By <u>WPM</u> <hr/> <hr/> <hr/>
<div data-bbox="247 1478 518 1724" style="border: 1px solid black; padding: 10px; width: fit-content; margin: auto;"> <p style="text-align: center;">NW Corner Section 35-2-3</p> </div> <p>Signature <u>William M. [Signature]</u> Date: <u>10/5/18</u></p>	<p style="text-align: center;">Existing Section Corner Notes References for: N.W. Corner Section 35-2-3</p> <p>Monument and accessories established. Include brief description of area. <u>Mag nail found in Lost Creek Road</u> <u>See Survey Bk. 4, Pg. #244</u> <u>Ref #1= sign in South side 8" Square fence post</u> <u>N 35-40-00 E, 23.2 ft</u> <u>Ref #2= sign in North side of Pwp.</u> <u>S 4-19-00 W, 9 ft</u> <u>Ref #3= sign in West side of Pwp.</u> <u>N 71-00-00 E, 55.0 ft,</u></p> <p>ISPCS-EZ-U.S.Survey Feet N: 1113294.26 E: 185868.24</p>

LAND CORNER RECORD
(RECTANGULAR SURVEYS)

21-A

Harrison Co. Index No. A-21

T 2 S R 3 E Mer. N.F. _____ County Harrison State Indiana
North Section _____ Corner common to sections 1 and 2

EXISTING SURVEYS	
<p style="text-align: center;">Original Government Survey</p> <p>Year surveyed <u>1805</u></p> <p>Original monument <u>Woods Post</u> <small>(wood post, stone, pile of stones, etc.)</small></p> <p style="text-align: center;">Bearing Trees</p> <p>Species _____ Diameter _____ Bearing _____ Distance _____</p>	<p style="text-align: center;">Original Evidence Found</p> <p>Year of search <u>2001</u> By <u>VHM</u></p> <p>Monument found <u>None</u></p> <p style="text-align: center;">Original Bearing Trees Found</p> <p>Species _____ Diameter _____ Bearing _____ Distance _____</p>
<p style="text-align: center;">Subsequent Corner Restoration</p> <p>Year surveyed _____ By _____</p> <p>Where filed or recorded _____ Monument _____ <small>(Original, concrete post, iron rod, etc...)</small></p> <p style="text-align: center;">Bearing Trees, Reference Objects</p> <p>Species _____ Diameter _____ Bearing _____ Distance _____</p>	<p style="text-align: center;">Evidence of Subsequent Corner Restoration Found</p> <p>Year of search <u>2002</u> By <u>VHM</u></p> <p><u>Recovered 1/2" square steel pin in West crown root of 36" W. Oak tree.</u></p> <p style="text-align: center;">Bearing Trees, Reference Objects</p> <p>_____</p> <p>_____</p> <p>_____</p>
<div style="border: 1px solid black; padding: 5px; margin-bottom: 10px;"> </div> <p>At time of search:</p> <p>1. Did you have the record description? Yes _____ No _____</p> <p>2. How was search area located? pacing, chaining, photo, maps, etc. _____</p> <p>3. Man hours spent in search _____</p> <p>4. Do you think additional search might recover evidence? Yes _____ No _____</p> <p>5. Signature _____</p>	<p style="text-align: center;">Relation of Evidence to Record Features Along Section Lines</p> <p>Section line to sections _____</p> <p>Object _____</p> <p>Record Distance _____</p> <p>Measured Distance _____</p> <p style="text-align: center;">Other Evidence</p> <p>Describe evidence of use and occupation such as roads, fences, clearings, timber cutting lines, plantations, etc... Cite source of testimony, if any. <u>Fence line to South.</u></p> <p style="text-align: center;">Perpetuation Record</p> <p>Monument and accessories established. Include brief description of area. <u>Monument is in open field 175 feet± East of woods line.</u></p> <p style="text-align: center;">Certified corner restoration certificate prepared Yes _____ No _____</p> <p>Filed in county records at _____ Date _____ County No. _____</p> <p>Identified on aerial photo No. _____ Which is filed at _____</p>

21-A

HAF ON COUNTY SURVEYOR
CORNER MONUMENT RECOVERY & REFERENCE RECORD

TWNSHIP: 25 RANGE: 3E SECTION: 192 CORNER REF. ID.: A21
DATE: 8/29/06

MONUMENT INFORMATION

LOCATION: No. Central Cor. Sec. 192

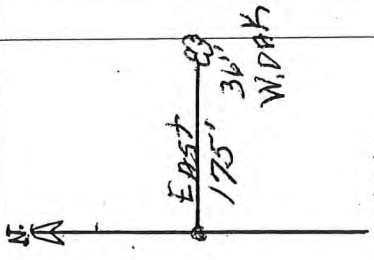
DESCRIPTION: 1/2" Square Steel Pin

ADDITIONAL DISTINGUISHING CHARACTERISTICS: Impressment in open field 100 feet east of woods diche

SIGN PLACED: () YES DATE: 1/1/

WITNESS MARKERS

TYPE	SIGN	BLAZE	ADDITION DESCRIPTION	
1.	<u>W. BLAZE</u>	()	()	<u>36" W. Glass Post</u>
2.	()	()	()	
3.	()	()	()	



1	2	3	4	5	6	7	8	9	10	11	12	13	14	15	16	17	18	19	20	21	22	23	24	
A	B	C	D	E	F	G	H	I	J	K	L	M	N	O	P	Q	R	S	T	U	V	W	X	Y

RECOVERED BY: VHM DATE: 1/02

REFERENCED BY: _____ DATE: _____

RECORDED IN PERPETUATION RECORDS BOOK: _____
BY: 2013 DATE: 8/29/06

HARRISON

CC TY

COPNER A-21

TOWNSHIP 2 S

RANGE 3

EAST

2ND

PRINCIPAL MERIDIAN

LOCATION	DESCRIPTION OF		DISTANCE FROM CORNER	BEARING FROM CORNER	DATE CHECKED	CHECKED BY	FIELD BOOK	REMARKS
	MONUMENT	REFERENCE						
North Corner Common Corner Sec. 1 & 2	1/2" Square steel pin	West Crown root of 36" W. Oak	175' East of wood line, in open field	East	2002	VHM	BK-5 pg. 8	

HARRISON

CO. TY

PRINCIPAL MERIDIAN

2ND

EAST

3

RANGE

2 S

TOWNSHIP

K-21

CORNER

21-K

LOCATION	DESCRIPTION OF		DISTANCE FROM CORNER	BEARING FROM CORNER	DATE CHECKED	CHECKED BY	FIELD BOOK	REMARKS
	MONUMENT	REFERENCE						
SE Corner NE $\frac{1}{4}$ Sec 14	# 5 rebar in pavement	Maple 37" unmarked	45.8'	S 72 W	9-23-03	RAG MAK	BK 5 pg 9	
		Wood Fence Post	12'	N 78 E	"	"		Sign Placed
		N.E. Corner Frame House	52.7'	S 50 W	"	"		

LAND CORNER RECORD
(RECTANGULAR SURVEYS)

21-K

Harrison Co. Index No. K-21

T 2 S R 3 E Mer. N.F. _____ County Harrison State Indiana
 1/4 Corner common to sections 13 and 14

EXISTING SURVEYS																
<p style="text-align: center;">Original Government Survey</p> <p>Year surveyed <u>1805</u> Original monument _____ <small>(wood post, stone, pile of stones, etc.)</small></p> <p style="text-align: center;">Bearing Trees</p> <p>Species _____ Diameter _____ Bearing _____ Distance _____</p>	<p style="text-align: center;">Original Evidence Found</p> <p>Year of search _____ By _____ Monument found _____</p> <hr/> <p style="text-align: center;">Original Bearing Trees Found</p> <p>Species _____ Diameter _____ Bearing _____ Distance _____</p>															
<p style="text-align: center;">Subsequent Corner Restoration</p> <p>Year surveyed _____ By _____ Where filed or recorded _____ Monument _____ <small>(Original, concrete post, iron rod, etc...)</small></p> <p style="text-align: center;">Bearing Trees, Reference Objects</p> <p>Species _____ Diameter _____ Bearing _____ Distance _____</p>	<p style="text-align: center;">Evidence of Subsequent Corner Restoration Found</p> <p>Year of search <u>2003</u> By _____ <u>Recovered #5 rebar in cut plug in pavement.</u></p> <hr/> <p style="text-align: center;">Bearing Trees, Reference Objects</p> <p>_____</p> <p>_____</p> <p>_____</p> <p>_____</p>															
<div style="border: 1px solid black; padding: 5px; margin-bottom: 10px;"> </div> <p>At time of search:</p> <p>1. Did you have the record description? Yes _____ No _____</p> <p>2. How was search area located? _____ pacing, chaining, photo, maps, etc. _____</p> <p>3. Man hours spent in search _____</p> <p>4. Do you think additional search might recover evidence? Yes _____ No _____</p> <p>5. Signature _____</p>	<p style="text-align: center;">Relation of Evidence to Record Features Along Section Lines</p> <p>Section line to sections _____ Object _____ Record Distance _____ Measured Distance _____</p> <hr/> <p style="text-align: center;">Other Evidence</p> <p>Describe evidence of use and occupation such as roads, fences, clearings, timber cutting lines, plantations, etc... Cite source of testimony, if any. <u>Corner is situated in intersection of Charles Davis Road and Flatwood Road, 6 feet South and 6 feet East of centerline-centerline.</u></p> <hr/> <p style="text-align: center;">Perpetuation Record</p> <p>Monument and accessories established. Include brief description of area.</p> <table style="width:100%; border-collapse: collapse;"> <tr> <td style="width:33%; text-align: center;">Maple</td> <td style="width:33%; text-align: center;">Wood Fence Post</td> <td style="width:33%; text-align: center;">Northeast Corner 2 Story</td> </tr> <tr> <td style="text-align: center;">37"</td> <td style="text-align: center;">N 78° E</td> <td style="text-align: center;">Frame House</td> </tr> <tr> <td style="text-align: center;">S 72° W</td> <td style="text-align: center;">12.0'</td> <td style="text-align: center;">S 50° W</td> </tr> <tr> <td style="text-align: center;">45.8'</td> <td style="text-align: center;">Set Witness</td> <td style="text-align: center;">52.7'</td> </tr> <tr> <td style="text-align: center;">Unmarked</td> <td style="text-align: center;">Sign</td> <td></td> </tr> </table> <hr/> <p>Certified corner restoration certificate prepared Yes _____ No _____ Filed in county records at _____ Date _____ County No. _____ Identified on aerial photo No. _____ Which is filed at _____</p>	Maple	Wood Fence Post	Northeast Corner 2 Story	37"	N 78° E	Frame House	S 72° W	12.0'	S 50° W	45.8'	Set Witness	52.7'	Unmarked	Sign	
Maple	Wood Fence Post	Northeast Corner 2 Story														
37"	N 78° E	Frame House														
S 72° W	12.0'	S 50° W														
45.8'	Set Witness	52.7'														
Unmarked	Sign															

21-K

Pg. 9

HARRISON COUNTY SURVEYOR
CORNER MONUMENT RECOVERY & REFERENCE RECORD

TWNSHP: 2S RANGE: 3E SECTION: 14

CORNER REF. ID.: K24
DATE: 9/23/03

MONUMENT INFORMATION

LOCATION: SE COR. NE 1/4

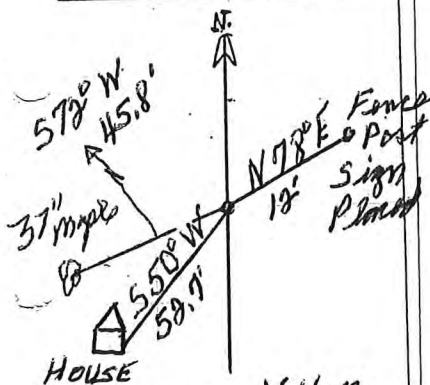
DESCRIPTION: #5 rebar in pavement

ADDITIONAL DISTINGUISHING CHARACTERISTICS: _____

SIGN PLACED: () YES DATE: 1/1

WITNESS MARKERS

TYPE	SIGN	BLAZE	ADDITION DESCRIPTION
1. Wood Fence Post	()	()	
2.	()	()	
3.	()	()	



	2	4	6	8	10	12	14	16	18	20	22	24
A												
B												
C												
D												
E												
F												
G												
H												
I												
J												
K												
L												
M												
N												
O												
P												
Q												
R												
S												
T												
U												
V												
W												
X												
Y												
Z												

RECOVERED BY: VHM

DATE: 1/1/03
DATE: _____
DATE: _____

REFERENCED BY: TOB

DATE: 9/28/03
DATE: _____
DATE: _____

RECORDED IN PERPETUATION RECORDS BOOK:
BY: TOB

DATE: 08/28/06

21-M

CORNER M-21 TOWNSHIP 2 S RANGE 3 EAST 2ND PRINCIPAL MERIDIAN

LOCATION	DESCRIPTION OF		DISTANCE FROM CORNER	BEARING FROM CORNER	DATE CHECKED	CHECKED BY	FIELD BOOK	REMARKS
	MONUMENT	REFERENCE						
Common Corner 13,14,23,24	Mag. Nail Set	Power Pole	22.4'	S 76 W	2003	RAG mak	BK. 5 pg. 10	Witness Sign Set
		Cherry 14" unmarked	39.5'	S 12 E	"	"	"	
		Buried CaSign Metal Sign unmarked	16.8'	S 30 E	"	"	"	

LAND CORNER RECORD
(RECTANGULAR SURVEYS)

21-M

Harrison Co. Index No. M-21

T 2 S R 3 E Mer. N.F. _____ County Harrison State Indiana
Section _____ Corner common to sections 13, 14, 23 and 24

EXISTING SURVEYS																
<p style="text-align: center;">Original Government Survey</p> <p>Year surveyed <u>1805</u> Original monument _____ <small>(wood post, stone, pile of stones, etc.)</small></p> <p style="text-align: center;">Bearing Trees</p> <p>Species _____ Diameter _____ Bearing _____ Distance _____</p>	<p style="text-align: center;">Original Evidence Found</p> <p>Year of search _____ By _____ Monument found _____</p> <hr/> <p style="text-align: center;">Original Bearing Trees Found</p> <p>Species _____ Diameter _____ Bearing _____ Distance _____</p>															
<p style="text-align: center;">Subsequent Corner Restoration</p> <p>Year surveyed _____ By _____ Where filed or recorded _____ Monument _____ <small>(Original, concrete post, iron rod, etc...)</small></p> <p style="text-align: center;">Bearing Trees, Reference Objects</p> <p>Species _____ Diameter _____ Bearing _____ Distance _____</p>	<p style="text-align: center;">Evidence of Subsequent Corner Restoration Found</p> <p>Year of search <u>2003</u> By _____ <u>Magnetic masonry nail set over reading.</u></p> <hr/> <p style="text-align: center;">Bearing Trees, Reference Objects</p> <p>_____</p> <p>_____</p> <p>_____</p> <p>_____</p>															
<div style="border: 1px solid black; padding: 5px; margin-bottom: 10px;"> </div> <p>At time of search:</p> <ol style="list-style-type: none"> Did you have the record description? Yes _____ No _____ How was search area located? pacing, chaining, photo, maps, etc. _____ Man hours spent in search _____ Do you think additional search might recover evidence? Yes _____ No _____ Signature _____ 	<p style="text-align: center;">Relation of Evidence to Record Features Along Section Lines</p> <p>Section line to sections _____ Object _____ Record Distance _____ Measured Distance _____</p> <hr/> <p style="text-align: center;">Other Evidence</p> <p>Describe evidence of use and occupation such as roads, fences, clearings, timber cutting lines, plantations, etc... Cite source of testimony, if any. <u>Corner is situated 6 feet East of centerline of Charles Davis Road, 13 feet South of centerline of crushed stone drive to East.</u></p> <hr/> <p style="text-align: center;">Perpetuation Record</p> <p>Monument and accessories established. Include brief description of area.</p> <table style="width: 100%; border-collapse: collapse;"> <tr> <td style="width: 33%; border-bottom: 1px solid black;">Power Pole</td> <td style="width: 33%; border-bottom: 1px solid black;">Cherry</td> <td style="width: 33%; border-bottom: 1px solid black;">Metal Sign</td> </tr> <tr> <td style="border-bottom: 1px solid black;">S 76° W</td> <td style="border-bottom: 1px solid black;">14"</td> <td style="border-bottom: 1px solid black;">"Buried Cable"</td> </tr> <tr> <td style="border-bottom: 1px solid black;">22.4'</td> <td style="border-bottom: 1px solid black;">S 12° E</td> <td style="border-bottom: 1px solid black;">S 30° E</td> </tr> <tr> <td style="border-bottom: 1px solid black;">Set Witness</td> <td style="border-bottom: 1px solid black;">39.5'</td> <td style="border-bottom: 1px solid black;">16.8'</td> </tr> <tr> <td style="border-bottom: 1px solid black;">Sign</td> <td style="border-bottom: 1px solid black;">Unmarked</td> <td style="border-bottom: 1px solid black;">Unmarked</td> </tr> </table> <hr/> <p>Certified corner restoration certificate prepared Yes _____ No _____ Filed in county records at _____ Date _____ County No. _____ Identified on aerial photo No. _____ Which is filed at _____</p>	Power Pole	Cherry	Metal Sign	S 76° W	14"	"Buried Cable"	22.4'	S 12° E	S 30° E	Set Witness	39.5'	16.8'	Sign	Unmarked	Unmarked
Power Pole	Cherry	Metal Sign														
S 76° W	14"	"Buried Cable"														
22.4'	S 12° E	S 30° E														
Set Witness	39.5'	16.8'														
Sign	Unmarked	Unmarked														

21-M

HARRISON COUNTY SURVEYOR
CORNER MONUMENT RECOVERY & REFERENCE RECORD

TWNSHIP: 2S RANGE: 3E SECTION: 13 CORNER REF. I.D.: M21
DATE: 1 / 103

MONUMENT INFORMATION

LOCATION: Charles Davis Rd Sec. 13, 14, 23, 24

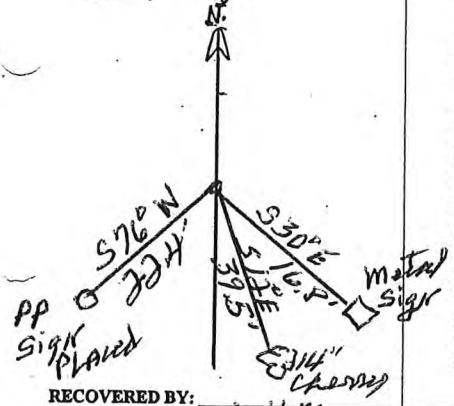
DESCRIPTION: Magnetic Nail set

ADDITIONAL DISTINGUISHING CHARACTERISTICS: _____

SIGN PLACED: YES DATE: 1 / 103

WITNESS MARKERS

TYPE	SIGN	BLAZE	ADDITION DESCRIPTION
1. P.P.	(✓)	()	576° W 224'
2. 1 1/2" Cherry	()	()	
3. Metal Sign	()	()	Buried Cable



	1	2	3	4	5	6	7	8	9	10	11	12	13	14	15	16	17	18	19	20	21	22	23	24
A																								
B																								
C																								
D																								
E																								
F																								
G																								
H																								
I																								
J																								
K																								
L																								
M																								
N																								
O																								
P																								
Q																								
R																								
S																								
T																								
U																								
V																								
W																								
X																								
Y																								
Z																								

RECOVERED BY: VHM DATE: 1 / 103

REFERENCED BY: _____ DATE: 1 / 103

RECORDED IN PERPETUATION RECORDS BOOK: BY: JPA DATE: 8 / 29 / 06