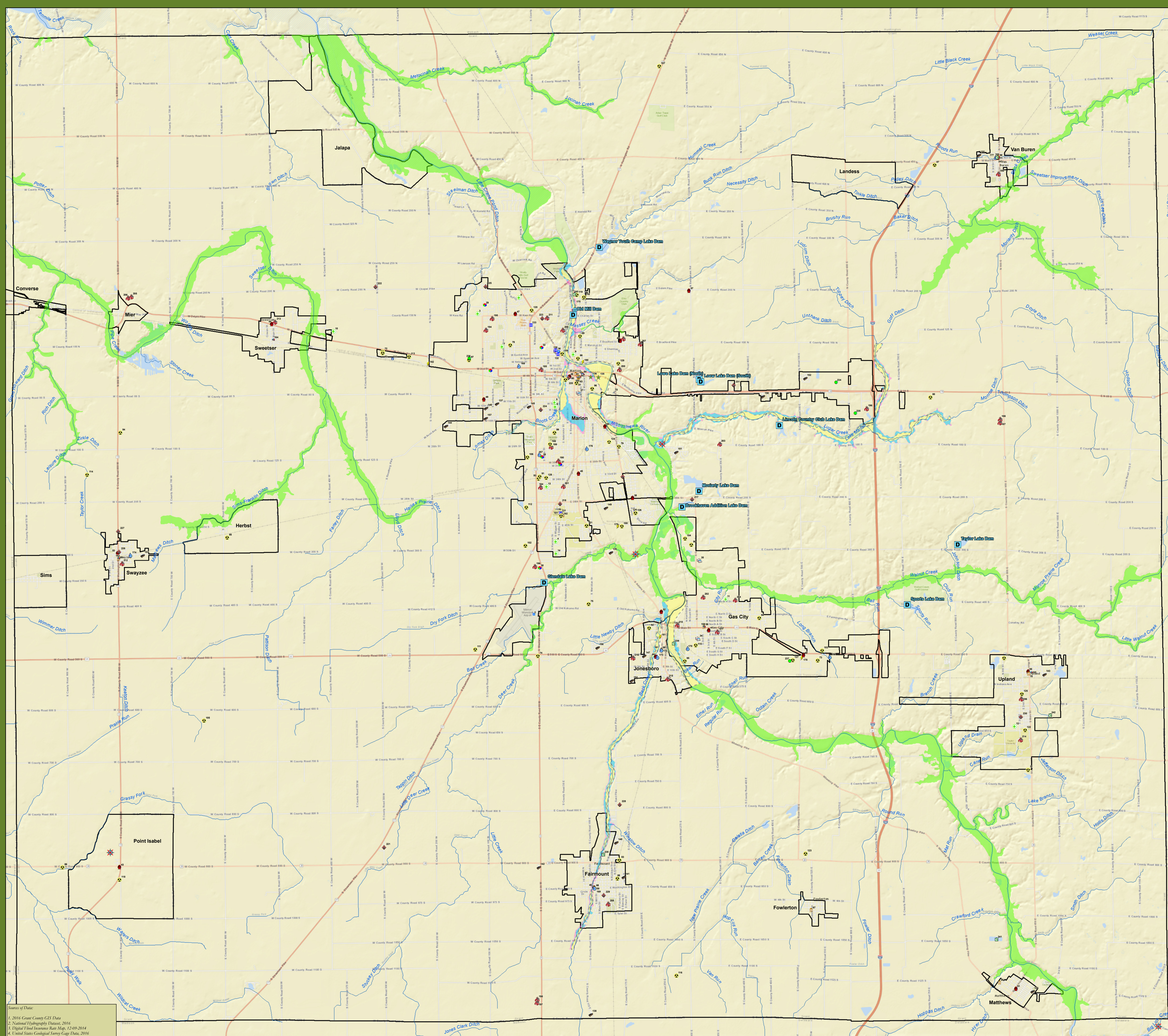


FEMA Flood Zones, USGS Stream Gages, and Dams

Grant County, Indiana



Category	Map ID	Name
AIRPORTS	1	Marion General Hospital
	2	Marion Municipal Airport
	3	Bowditch Airport
	4	Calvin D. O'Neil Airport
ASSISTED LIVING/NURSING HOMES	5	Marion Rehabilitation & Assisted Living
	6	Miley's Memory Station
	7	Northwood Manor
	8	Red Oak Residential Services
DAMS	9	State Living Assisted Senior Living
	10	Town City Health Care
	11	University Nursing Center
	12	Wagoner Health Care
COMMUNICATIONS	13	WVU/WRCP/WREH/WVCC: Radio Station
	14	WVU: Radio Station
	15	WVU/WRCP/WREH/WVCC: Radio Station
	16	WVU: Radio Station
DAYS CARE	17	Brookhaven Addition Lake Dam
	18	Chickadee Lake Dam
	19	Lewis County Chick Lake Dam
	20	Low Lake Dam (North)
EMERGENCY MANAGEMENT	21	Low Lake Dam (South)
	22	Maryland Lake Dam
	23	Trinity Lake Dam
	24	Spring Lake Dam
EMERGENCY MEDICAL SERVICES	25	Ticket Lake Dam
	26	Wagoner Youth Camp Lake Dam
	27	Wagoner Youth Camp Lake Dam
	28	Wagoner Youth Camp Lake Dam
FIRE DEPARTMENTS	29	Wagoner Youth Camp Lake Dam
	30	Wagoner Youth Camp Lake Dam
	31	Wagoner Youth Camp Lake Dam
	32	Wagoner Youth Camp Lake Dam
HAZARDOUS MATERIALS	33	Wagoner Youth Camp Lake Dam
	34	Wagoner Youth Camp Lake Dam
	35	Wagoner Youth Camp Lake Dam
	36	Wagoner Youth Camp Lake Dam
SHELTERS	37	Wagoner Youth Camp Lake Dam
	38	Wagoner Youth Camp Lake Dam
	39	Wagoner Youth Camp Lake Dam
	40	Wagoner Youth Camp Lake Dam
TRANSPORTATION	41	Wagoner Youth Camp Lake Dam
	42	Wagoner Youth Camp Lake Dam
	43	Wagoner Youth Camp Lake Dam
	44	Wagoner Youth Camp Lake Dam
USER-DEFINED FACILITIES	45	Wagoner Youth Camp Lake Dam
	46	Wagoner Youth Camp Lake Dam
	47	Wagoner Youth Camp Lake Dam
	48	Wagoner Youth Camp Lake Dam
WASTEWATER TREATMENT PLANTS	49	Wagoner Youth Camp Lake Dam
	50	Wagoner Youth Camp Lake Dam
	51	Wagoner Youth Camp Lake Dam
	52	Wagoner Youth Camp Lake Dam

Source of Data:
 1. 2016 Grant County GIS Data
 2. National Hydrography Dataset, 2016
 3. Digital Flood Insurance Rate Map, 12-09-2014
 4. United States Geological Survey Data, 2016
 5. Indiana Department of Natural Resources, Dams & Levees, 2016