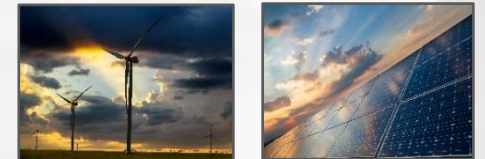




We exist to deliver safe, reliable energy that drives value to our customers

Project Fusion

April 3, 2023



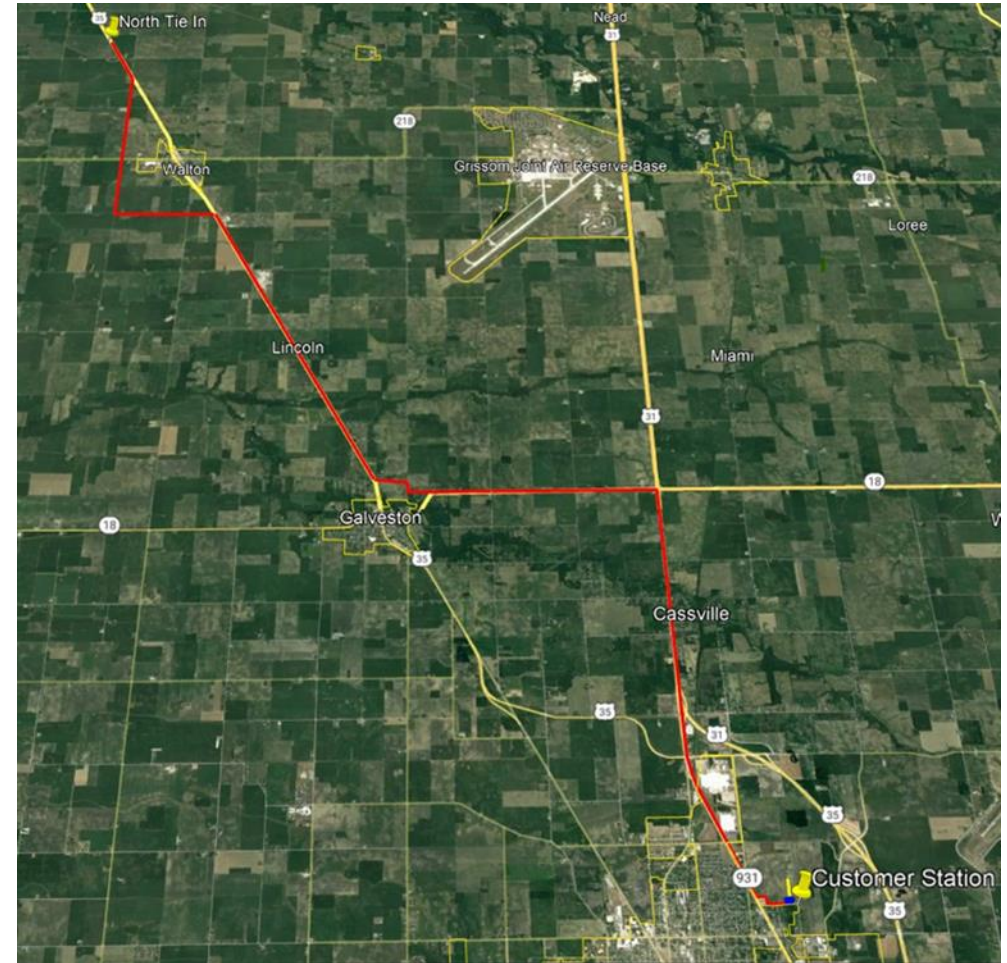
Project Fusion – Project Overview

Summary

Project Scope: Installation of approximately 18.5 miles of new 24-inch, high pressure coated steel pipeline, 1000 feet of 16-inch steel pipeline for connection to customer valve, with two mainline isolation valves, one new launcher and valve setting located at existing NIPSCO 295# system (near Walton, IN), and one new combined customer regulator / meter station (near Kokomo, IN) with dual feeds and district station, inclusive of traffic control restoration of hard and soft surfaces. Construction started February 13, 2023, with an in-service date of September 30, 2023.

Scope Assumptions

- ~18.5 miles of 24 inch .375 wall pipeline at 600psig design and ~295psig operating pressure.
- Tie-in to existing 295psig NIPSCO system at north end with launcher and valve cluster site.
- Customer regulator station/meter with dual feeds to customer facility and one feed to NIPSCO distribution system and receiver at south end of the project.
- (2) Parcels impacted: (1) Tie in site & (1) customer station
- (9) Open Cut Crews
- (22) Total HDD's / (3) Jack & Bores
- (2) Foreign pipeline crossings
- (1) Railroad crossing



Project Fusion

WE 3/26/23	Planned	Actuals	% Complete
Pipe Footage	97,239'	22,818'	23.5%
HDD/Jack & Bore	24	8	33.3%
Manpower	322,664	52,893	16.4%



Week of 3/27

Crew	From Schedule Submitted on 3/24	Information
Open Cut Crew 1	Open Cut E CR 700 S to E CR 800 S	Continue along CR 600 E
Open Cut Crew 2	Open Cut E CR 650 S to E CR 700 S	Continue along CR 600 E. Open Cut E CR 650 S
Open Cut Crew 3	Open Cut E 800 S (US-35 to MLV 1), MLV 1, (MLV 1 to E 700 S)	Continue along CR 800 S. Reach S CR 700 E and begin street crossing
Open Cut Crew 4	Open Cut US-35 (950 E to CR 1150)	Continue along US-35
Open Cut Crew 5	Open Cut Nustar Pipeline Crossig to E CR 1000 S	Continue along US-35
Open Cut Crew 6	Open Cut E CR 1225 (US-35 to S CR 1000 E), OC along S CR 1000 E	Complete Installation along E CR 1225, begin installation along S CR 1000 E
Open Cut Crew 7	Open Cut S 500 W to MLV 2	Continue along IN-18
Open Cut Crew 8	Maple Lawn Entrance Hybrid Tie-Ins, OC from Maple Lawn Hybrid to HDD 6	Continue along US-31. Complete both hybrid tie-in's
Open Cut Crew 9	US-35 J&B to Shell Gas Station, Shell Gas station towards Nickel Plate Trail	Coninue along 931. Continue past Shell Gas station this week
HDD Crew 1	HDD 6 - South Fork Deer Creek	Complete Pilot, Complete 18" Ream, have started 24" Ream
HDD Crew 2	HDD 2 - Rock Creek (South)	Move 330 Rig to site, Be 2/3rd's through reaming with 36"
Hybrid	S 400 W Hybrid/Rock Creek (North) Hybrid	Complete S 400 W Hybrid, Begin Rock Creek (N) Hybrid - Bore Pilot
Jack & Bore	US31/931 J&B	Bullseye Mobilizing on Tuesday (3/28)
Fab Shop	Prefab	Meter skids and Reg outlet header

We exist to deliver safe, reliable energy that drives value to our customers

Road Closures / Restrictions

US-35. 0+00 to 0+40 (1.5 miles North of Walton)

- single lane restriction 24/7
- E CR500 S closed at US-35

US-35. 399+50 to 427+50 (between CR1050 and CR1100)

- Single lane restriction 24/7

S CR600 E. 40+00 to 181+00

- Road closure from US-35 to E CR800 S
 - o Limited access for residents and businesses
- Cross traffic open at E CR600 S and SR-218

E CR800 S. 181+00 to 251+00

- Road closure from S CR600 E to US-35
 - o Limited access for residents and businesses
 - o Cross Traffic open at S CR700 E

US-35. 323+00 to 354+00 (2 miles South of Walton)

- Single lane restriction 24/7

US-35. 399+50 to 427+50 (between CR1050 and CR1100)

- Single lane restriction 24/7

US-35. 475+00 to 495+00 (1 mile North of Galveston)

- Single lane restriction 7am-7pm. Mon thru Sat.

E CR1225 S. 507+00 to 529+00

- Road closure from US-35 to S CR1000 E
 - o Limited access for residents and businesses



SR-18. 590+00 to 642+00

- Road closure from S 500 W to S 400 W
 - o Limited access for residents and businesses

US-31 SB. 690+00 to 780+00

- Right lane restriction beginning 1500' north of SR-18 and extending to Apperson Way Ln W

US-931 SB. 840+00 to 965+00

- Right lane restriction beginning at US-31 interchange and extending to E Gano St
- N 00 EW closed at US-931

US-931 NB. 970+00 to 960+00

- Right lane restriction beginning at E Barkdol St and extending to N Ohio St
- N Elizabeth St closed at US-931

Communication



NATURAL GAS SYSTEM WORK IN YOUR AREA

Work will soon be underway to expand the natural gas system in Howard, Cass, and Miami County

SERVING REGIONAL ECONOMIC GROWTH

This project will provide natural gas service to the StarPlus Energy in Kokomo and provides long-term benefits to the communities we serve by:

- Providing additional capacity for large scale customers bolstering regional economic growth
- The use of local union trades for construction provides hundreds of union employment opportunities in the local area

Project Information:

- Install 18.5 miles of new 24" natural gas steel pipeline & 1500' of 16" steel pipeline (Reference map on PG. 2)
- New station facility north of Walton to include new valve settings and safety components
- New customer facility station in Kokomo

WHEN WILL WE BE WORKING:

Project construction will begin in February 2023 and is expected to last through November 2023.

Work will occur Monday - Saturday from 7 a.m. to 5 p.m. On occasion, we may need to work evening and additional weekend hours to meet customer deadlines. **All Schedules are dependent on weather.**

WHAT WE DO*:

- 1. Prep work.** To make sure no other underground utilities are damaged by this work, we will call 811 to have the public utilities marked with flags, stakes and temporary paint. Please do not remove these markings. In your neighborhood you may experience right-of-way tree/brush trimming/clearing, additional truck traffic, employees, and contracted agents supporting this project work.
- 2. Access to construction path.** Obstructions in the public right-of-way such as fences and landscapes, may need to be removed. If we need access to your property we will reach out to you directly to discuss property requests.
- 3. Service Interruptions.** There are no anticipated services interruptions with this work.
- 4. Clean up.** We will repair or replace any sidewalks, driveways, or roads disturbed by this work. We will also fill holes with dirt, level areas, lay top soil and reseed grass. Our goal is to restore everything as close to its original condition as possible.
***There may be days, weeks or months between some of these steps. See the FAQ.

NATURAL GAS SYSTEM WORK IN YOUR AREA

WHERE WE WILL BE WORKING:



OUR TEAM IN YOUR AREA & WORK ZONE SAFETY TIPS:

- You will see us working with our approved contractor xxx, to complete this work.
- All of our employees and contractors can be identified by marked vehicles and also carry a photo ID to assist in proper identification while working in your community.
- Please expect temporary lane/road closures as part of this work. Signs and detour routes will be posted ahead of time. For your safety and the safety of crew members please follow posted detour routes and the direction of onsite crew members.
- Please drive carefully around construction zones and do not park in marked construction zone areas or drive through fenced/barricaded/blocked areas.
- Keep your family and pets safe by staying away from construction zones and following the directions of posted signs and on-site crews members in your area.

ADDITIONAL INFORMATION

- Review the Frequently Asked Questions.
- Look for door hangers that may be placed on your front door with project updates and additional information in your mailbox.
- Contact 1-800-4NIPSCO (1-800-464-7726) and reference Howard, Miami, and Cass County Natural Gas Expansion Project

Note: If you have received this information and you are not the current property owner, please forward this information to the landlord or property owner immediately.

FREQUENTLY ASKED QUESTIONS

Why is this work being performed?

System expansion projects provide opportunity for regional economic growth in communities served. The Howard, Cass, and Miami County natural gas expansion work is at the request of a third-party customer to service its new plant in the City of Kokomo.

Will digging occur in yards, sidewalks or driveways, and if so, who's going to fix it?

Because natural gas lines are buried, in some cases we may need to dig in your yard. When we make personal contact with you please let us know about any buried sprinkler or septic systems, invisible fences, or any other unique features we should be aware of at your home or business. We will try to minimize the amount of digging and work with you to restore everything as close to its original condition as possible. If we disturb your yard, sidewalk and/or driveway, we will repair affected areas as soon as weather permits. Initial restoration such as leveling of surfaces, will be completed once the project work is finished.

What if I smell gas while you're working?

Take action immediately. Natural gas has a rotten egg odor that alerts you to a leak. If you smell an odor of gas: **Leave the area immediately. Don't turn lights or electronics off or on, or operate any other switches. Call 911 and 1-800-634-3524 from a safe location.** If our crews are working in the area, you also may contact anyone on-site after you have called 1-800-634-3524.

Will I have to pay extra for this project?

No, you won't have to pay specifically for this improvement project in your neighborhood. The cost of building, maintaining and upgrading our gas system is shared by all customers and is already a part of the monthly bill you pay.

The Restoration Process

When we are nearing the end of our system expansion work, we will put things back in order. It is our re-sponsibility to repair or replace any portion of streets, sidewalks, driveways, yards, etc. disrupted by our work.

What's Next:

1. Temporary Patching: Our goal is to ensure the construction area is safe and accessible until permanent repairs can be made. Throughout the project, we may put a temporary patch on your streets and sidewalks.

2. Permanent Paving and Concrete: Once the project is complete, we will begin the permanent replacement or repair on your streets and sidewalks. We will work with your community to repair with similar surfaces. For example, concrete will be replaced with concrete and asphalt will be replaced with asphalt, according to community codes. This work usually takes place three to four weeks after the replacement work is done, but the schedule may be impacted by weather conditions and other factors.

3. Lawn Repair: This will include filling in holes with dirt, leveling the area, laying down topsoil, and re-seeding the grass. Please make sure to water and mow your grass to encourage desired results.

We appreciate your patience. This clean-up process may take us several weeks to complete once the system upgrade work is done.

For more information on this project and our Integrity Management efforts, visit [NIPSCO.com/projects](https://www.nipSCO.com/projects).



For more information on this project and our Integrity Management efforts, visit [NIPSCO.com/projects](https://www.nipSCO.com/projects).



For more information on this project and our Integrity Management efforts, visit [NIPSCO.com/projects](https://www.nipSCO.com/projects).



We exist to deliver safe, reliable energy that drives value to our customers

NiSource | NYSE: NI | [nisource.com](https://www.nisource.com) |

Questions, Comments, and Concerns...