



Commission for Higher Education

14 Gubernatorial Appointees
I.C. 21-18-2

Commissioner
Chris Lowery

Executive Assistant to the Commissioner
Rachel Zajac

Board for Proprietary Education

5 Gubernatorial Appointees, 2 Ex Officio
IC 21-18.5-5

Senior Associate Commissioner and Chief Academic Officer
Matt Butler

Director for Academic Affairs and Transfer
Vacant
Director for State Authorization and Reciprocity
Ross Miller

Senior Associate Commissioner for Business Solutions
Brooke Kile

Associate Commissioner for Information Technology
Rajinder Heir
Controller
Mike Wardell
Director of Finance
Vacant
Director for Business Intelligence and Analytics
Aaron Olson
Director for UX
Alison Partee
Statistician
Alex Parkison

Senior Associate Commissioner and Chief Operating Officer
Michelle Ashcraft

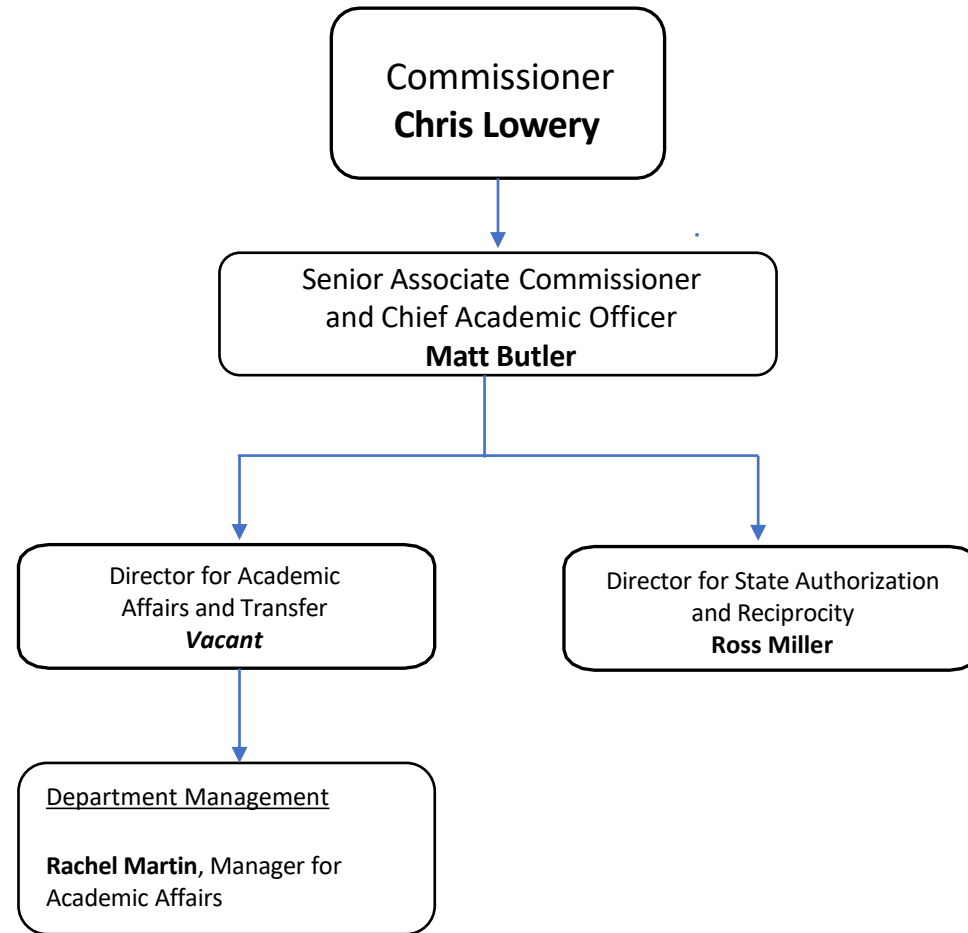
Associate Commissioner for K-12 Strategy
Tony Harl
Assistant Commissioner for Public Policy and Strategic Partnerships
Greg Harrell
State Director for Financial Aid
Angel McAllister
Director for K-12 Outreach and Postsecondary Transitions
Hilary Deardorff
Director for Adult Strategy Engagement
Davyd Hall

Associate Commissioner for Marketing and Communications
Allison Kuehr

Creative Director
Doug Lintner
Communications Director
Emily Price
Graduate Medical Education Board and Events Manager
Lucas Norrington
Content Marketing Specialist
Kayla Walke

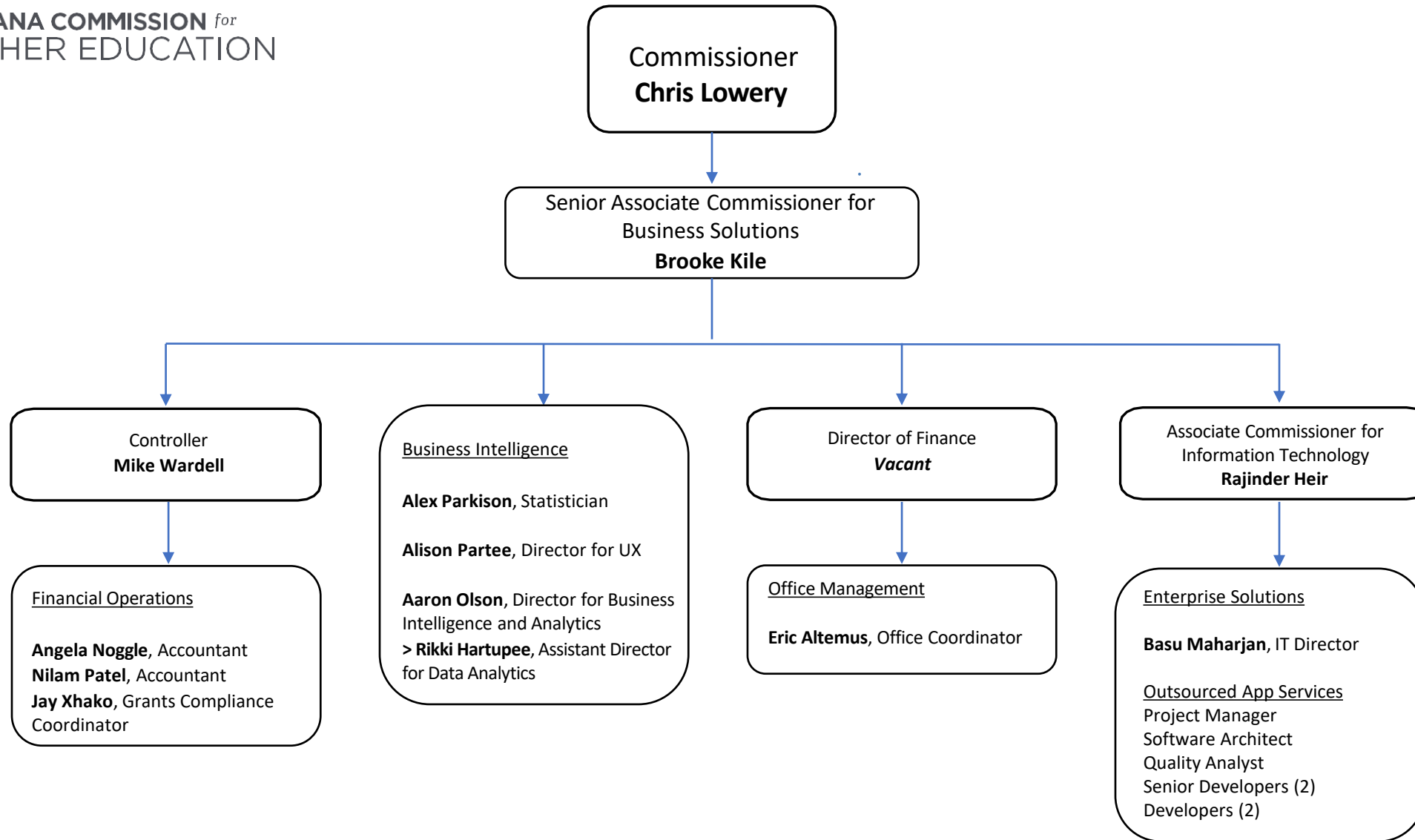


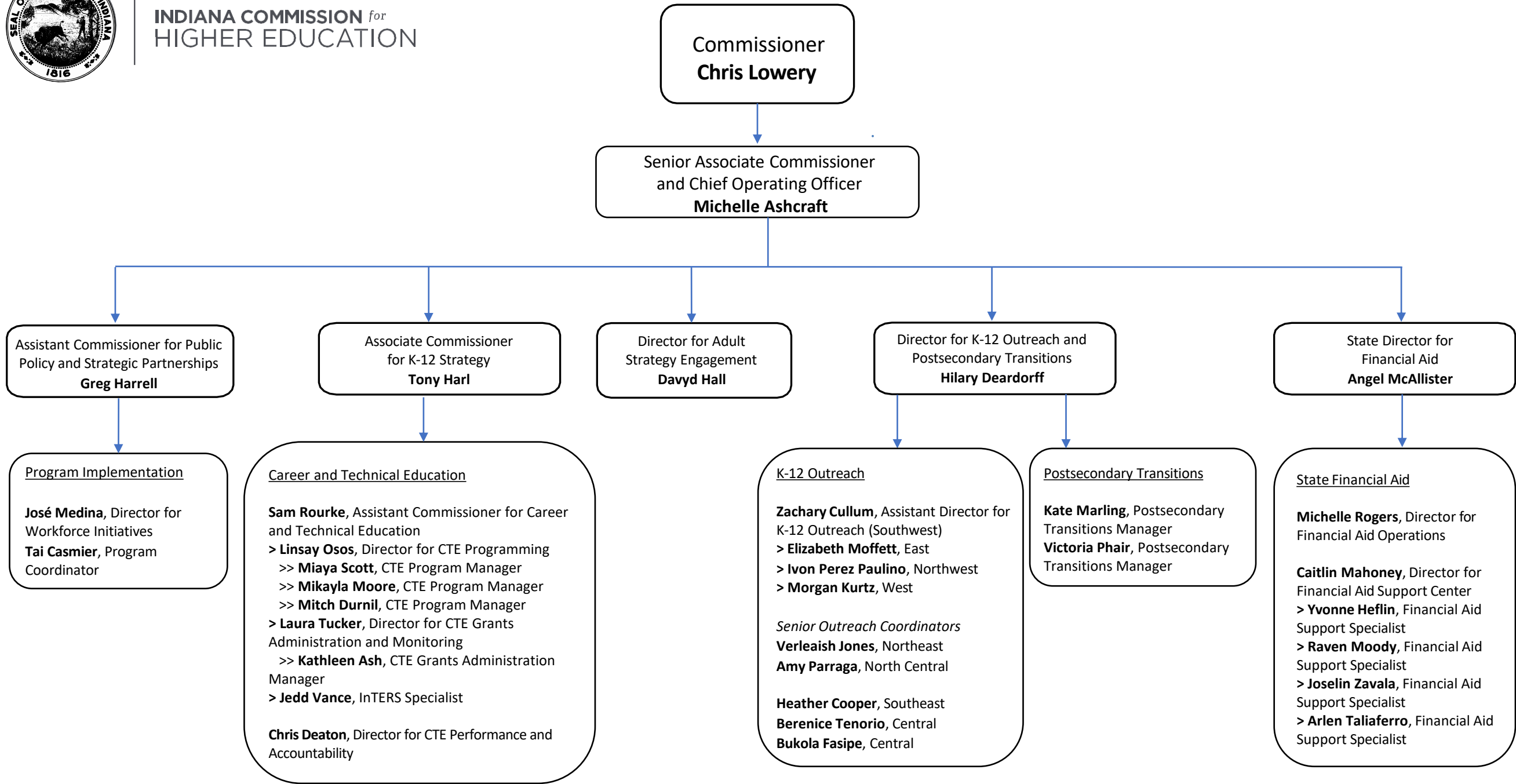
INDIANA COMMISSION *for*
HIGHER EDUCATION





INDIANA COMMISSION *for*
HIGHER EDUCATION







INDIANA COMMISSION *for*
HIGHER EDUCATION

