

UNDERSTANDING THE COST OF DEGREE PROGRAMS

IC 21-14-15-1(8)

Cody Robison, *Deputy Chief Financial Officer*
Brooke Kile, *Senior Associate Commissioner for Business Solutions*

April 1, 2026



INDIANA COMMISSION *for*
HIGHER EDUCATION

TODAY'S AGENDA

- I. Reporting on Degrees in State Law
- II. Alignment to Our Strategic Priorities
- III. How to Engage with the Data

Second Regular Session of the 123rd General Assembly (2024)

PRINTING CODE. Amendments: Whenever an existing statute (or a section of the Indiana Constitution) is being amended, the text of the existing provision will appear in this style type, additions will appear in **this style type**, and deletions will appear in ~~this style type~~.

Additions: Whenever a new statutory provision is being enacted (or a new constitutional provision adopted), the text of the new provision will appear in **this style type**. Also, the word **NEW** will appear in that style type in the introductory clause of each SECTION that adds a new provision to the Indiana Code or the Indiana Constitution.

Conflict reconciliation: Text in a statute in *this style type* or ~~this style type~~ reconciles conflicts between statutes enacted by the 2023 Regular Session of the General Assembly.

HOUSE ENROLLED ACT No. 1001

AN ACT to amend the Indiana Code concerning education.

Be it enacted by the General Assembly of the State of Indiana:

SECTION 1. IC 20-30-5-24, AS ADDED BY P.L.202-2023, SECTION 19, IS AMENDED TO READ AS FOLLOWS [EFFECTIVE JULY 1, 2024]: Sec. 24. (a) Beginning July 1, 2024, each school corporation, charter school, and state accredited nonpublic school shall include in its curriculum instruction for all students concerning career awareness.

(b) Not later than December 31, 2023, the state board, in cooperation with the commission for higher education, must create career planning and coaching standards for the course described in subsection (a). The state board, in cooperation with the commission for higher education, shall create criteria for a career awareness course that includes instruction on:

- (1) career awareness regarding a broad range of occupations with an emphasis on high wage, high demand industry sectors;
- (2) career pathways concerning current and emerging sectors including relevant education and training;
- (3) career scholarship accounts and the availability of state financial aid and funding; and
- (4) individualized career planning for each student.

(c) The department, in cooperation with the commission for higher education, shall develop a series of on-demand, online learning modules that may be integrated into the course described in subsection

HEA 1001 — CC 1



REPORTING ON DEGREES IN STATE LAW

- ▶ Indiana Code (IC) 21-14-15-1 added annual reporting requirements for public institutions.
- ▶ Today's presentation and data publication highlights a portion of these requirements: "the total cost to the state educational institution for each degree program" IC 21-14-15-1(8).

STATUTORY REQUIREMENTS



INDIANA COMMISSION *for*
HIGHER EDUCATION

- ▶ For each degree offered by the university:
 - ▶ Number of student enrollments, competitions, and on-time completions
 - ▶ The number of faculty involved
 - ▶ The number of administrative support staff involved
 - ▶ Student/faculty and student administrative staff ratio
 - ▶ **Total cost for the institution to offer the program**
 - ▶ Total cost for the student
 - ▶ Salary data for program graduates
 - ▶ Estimated total debt load incurred by students
 - ▶ Student debt load trends over time
- ▶ The number of administrators and their average compensation
- ▶ The number of student-facing faculty and instructors and their average compensation

ALIGNMENT TO OUR STRATEGIC PRIORITIES


- ▶ **Affordability** is one of the Commission's key focus areas:
 - ▶ Ensuring higher education is more **affordable and accessible** to Hoosier students and families.
- ▶ The Commission has committed to **transparency** and providing strong tools for decision makers.
- ▶ Alignment between our institutions and the workforce requirements of today and tomorrow.

REPORTING ON DEGREES DATA DASHBOARD: PROGRAM COSTS

Reporting on Degrees Data Dashboard

Home > Data and Research > Reporting on Degrees

Faculty & Staff Salaries | College Costs & Financial Aid | Comparative College Pricing | External Data Links | **Institution Submissions** | Data Notes

 INDIANA COMMISSION for HIGHER EDUCATION

2024 Reporting on Degrees Dashboard

Description
Per Indiana Code [IC-21-14-15-1](#), the Commission is required to annually collect and report various metrics related to affordability, student return on investment, workforce and economic alignment, and institutional accountability.
<https://iga.in.gov/laws/2024/ic/titles/21>

This Dashboard has been prepared in accordance statute and is intended for the following audiences:

- ▶ Accessible via **Reporting on Degrees Data Dashboard**.
 - ▶ Under “Institution Submissions” tab
- ▶ Data is reported **annually**.
- ▶ Helpful information for both decision-makers and the public.

REPORTING ON DEGREE COSTS

- ▶ Cost Reports are separated by institution and campus.
- ▶ The reports list the estimated annual cost of academic programs, the number of full-time equivalent (FTE) students, and the annual cost-per-FTE in said programs.
- ▶ Institutions were given options when determining how they report their data.
 - ▶ Option A: By Degree Program
 - ▶ Option B: By Cost Center
 - ▶ Option C: By Existing Cost Study

METHODOLOGY OPTIONS: REPORTING OPTIONS FOR COST PER DEGREE

Option A: Degree Program

- ▶ Degree Program is defined as a 1) degree level and 2) Classification of Instructional Program (CIP) code (e.g., B.S. in Business Administration).
- ▶ **Indiana State University, Indiana University, Ivy Tech Community College**

Option B: Cost Center

- ▶ Cost Center is an area within an academic unit that owns particular revenues and expenditures (e.g., School of Business).
- ▶ **Ball State University, Purdue University, Vincennes University**

Option C: Existing Study

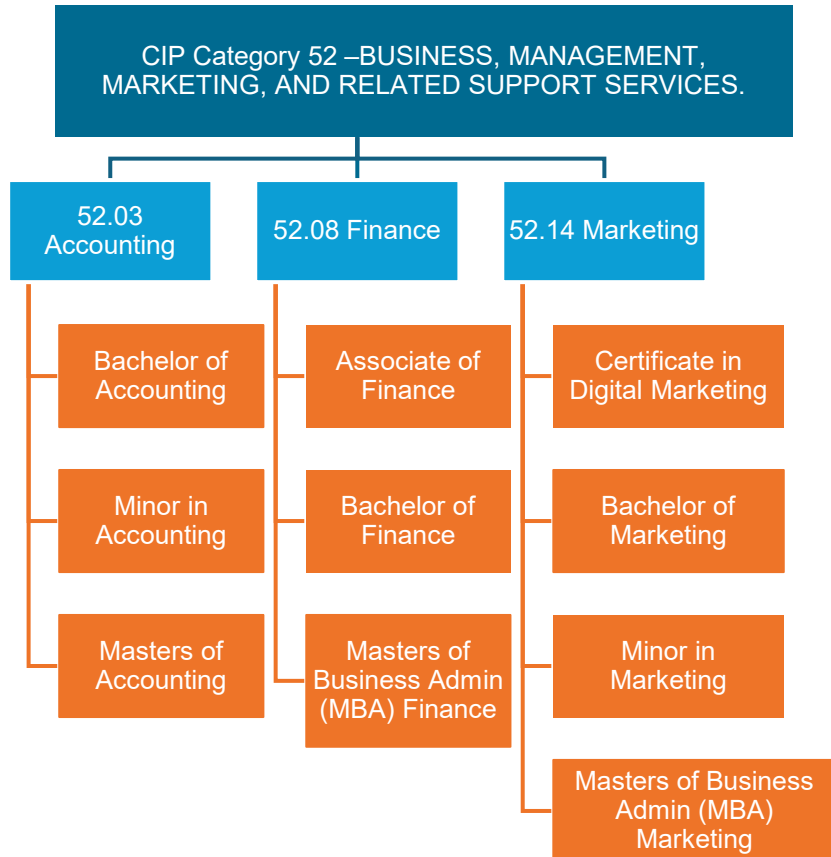
- ▶ Institutions have existing data from a recent or ongoing cost study.
- ▶ In this case, this data most resembles Option A.
- ▶ **University of Southern Indiana**

METHODOLOGY VISUAL: DEGREE PROGRAM vs. COST CENTER

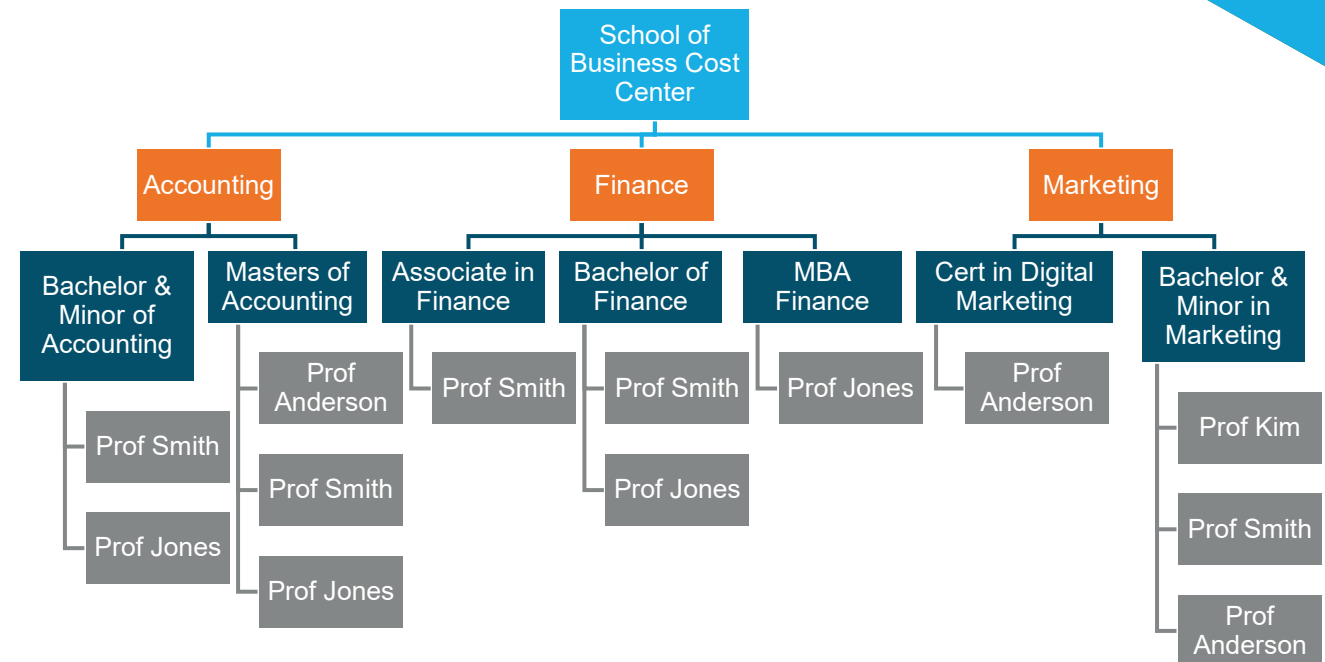


INDIANA COMMISSION for
HIGHER EDUCATION

A. Degree Program



B. Cost Center



HOW INSTITUTIONS REPORTED COST?

- ▶ Cost Definition

- ▶ Utilize industry standard set by National Association of College and University Business Officers (NACUBO).

- ▶ **Must include** salary, wages, and benefits of **instructional and research faculty and staff**.

- ▶ **Optional** to include salary, wages, and benefits of academic support staff, student services staff, and plant/facilities expenses.

HOW INSTITUTIONS REPORTED FTE?

- ▶ Full Time Equivalent (FTE)
 - ▶ Defined by institution in plain language.
 - ▶ One FTE is generally one full-time student.

HOW INSTITUTIONS REPORTED REPORTING YEAR?

- ▶ Reporting Year
 - ▶ Must be within the last three fiscal years.
 - ▶ All institutions reported either FY24 or FY25.

REPORT STRUCTURE OPTION A: DEGREE PROGRAM

	A	B	C	D	E	F	G	H	I	J	K
1	CHE Campus ID										
2	CHE Campus Name										
3	[notes for campus - denote if this data includes or excludes certain locations or branch campuses]										
4											
5	OPTION A – using Degree Program										
6	<u>Fiscal Year</u>	<u>CHE CampusID</u>	<u>Institution Name</u>	<u>Degree Level</u>	<u>CIP</u>	<u>Degree Program Name</u>	<u>Degree Program Cost to Operate</u>	<u>Degree Program FTE</u>	<u>Degree Program Cost to Operate per FTE (Column G divided by Column H)</u>	<u>Includes Academic Support and/or Student Services Costs</u>	<u>Includes Operation and Maintenance of Plant / Facilities Costs</u>
7	2025	151744	Sample University	03	52.0000	Associate of Science in Business Administration	\$20,301	1	\$20,301	Y	N
8	2025	151796	Test University	03	52.0000	Associate of Science in Business Administration	\$98,613	4	\$24,653	N	N
9											
10											

REPORT STRUCTURE OPTION B: COST CENTER

	A	B	C	D	E	F	G	H	I	J
1	CHE Campus ID									
2	CHE Campus Name									
3	[notes for campus - denote if this data includes or excludes certain locations or branch campuses]									
4										
5	OPTION B – using Cost Centers									
6	<u>Fiscal Year</u>	<u>CHE CampusID</u>	<u>Institution</u>	<u>Cost Center Description</u>	<u>Cost Center Cost to Operate</u>	<u>Degree Program FTE</u>	<u>Degree Program Cost to Operate per FTE (Column G divided by Column H)</u>	<u>Degree Programs included in Cost Center</u>	<u>Includes Academic Support and/or Student Services Costs</u>	<u>Includes Operation and Maintenance of Plant / Facilities Costs</u>
7	2025	151744	Sample University	Department of Biology	\$1,517,487	62	\$24,476	B.A./B.S Biology, M.S. Biomedical Sciences	Y	N
8	2025	151796	Test University	Department of English	\$808,774	31	\$26,089	B.A. English Literature, B.A. Creative Writing	N	N
9										
10										

REPORT STRUCTURE OPTION C: EXISTING STUDY

	A	B	C	D	E	F	G	H	I	J	K	L	M
1	CHE Campus ID												
2	CHE Campus Name												
3	[notes for campus - denote if this data includes or excludes certain locations or branch campuses]												
4													
5	OPTION C – using Existing Cost Study												
6	<u>Fiscal Year</u>	<u>CHE CampusID</u>	<u>Institution</u>	<u>Award Level</u>	<u>CIP Code</u>	<u>Program Name</u>	<u>Program FTE</u>	<u>Instructional Cost Total</u>	<u>Full-Time Cost</u>	<u>Adjunct Cost</u>	<u>Non-Personnel Cost</u>	<u>Student Credit Hours</u>	<u>Program Cost per FTE</u>
7	2025	151744	Sample University	5	26.0101	Biology (Bachelor's)	62	\$1,517,487	1,138,115	\$303,497	\$75,874	1,200	\$24,476
8	2025	151796	Test University	5	23.0101	English (Bachelor's)	31	\$808,774	606,581	\$161,755	\$40,439	900	\$26,089
9													

CURRENT COMPARISON LIMITATIONS TO BE SOLVED



INDIANA COMMISSION for
HIGHER EDUCATION

- ▶ Due to differences in institutions' reporting methodology, comparisons between institutions cannot be made at this time.
- ▶ At this time, reports **do not capture** revenue generation, sources of funding, or expense breakdowns.
- ▶ New programs may not be represented in the data.
- ▶ **Faculty compensation will vary** by academic discipline, research output, rank, and institution type.
- ▶ Degree program or cost center costs **may include expenses related to “service” courses outside of the degree program.**
 - ▶ For example, Biology department expenses include salary/benefits related to faculty teaching introductory biology, anatomy, and physiology courses for students enrolled in the nursing program.

LOOKING AHEAD

- ▶ Continued focus on increased transparency to ensure stewardship of taxpayer dollars
- ▶ The Commission will work with stakeholders, including institutions, to determine how operating cost information can be better normalized across institutions to inform strategic decision-making.



INDIANA COMMISSION *for*
HIGHER EDUCATION