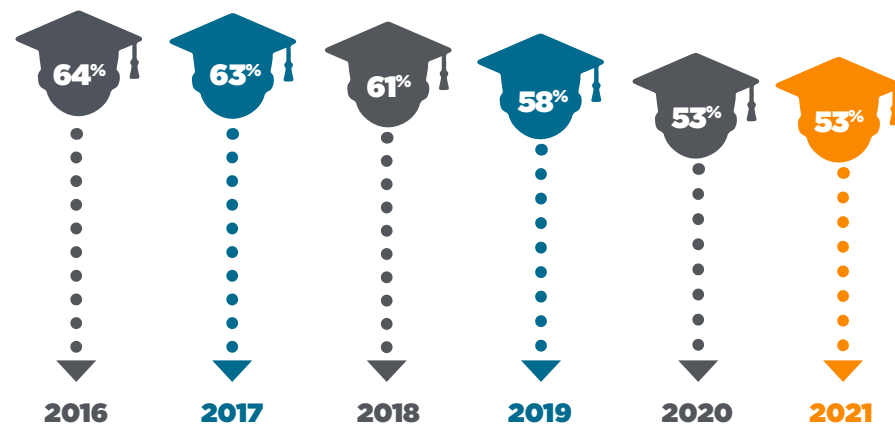




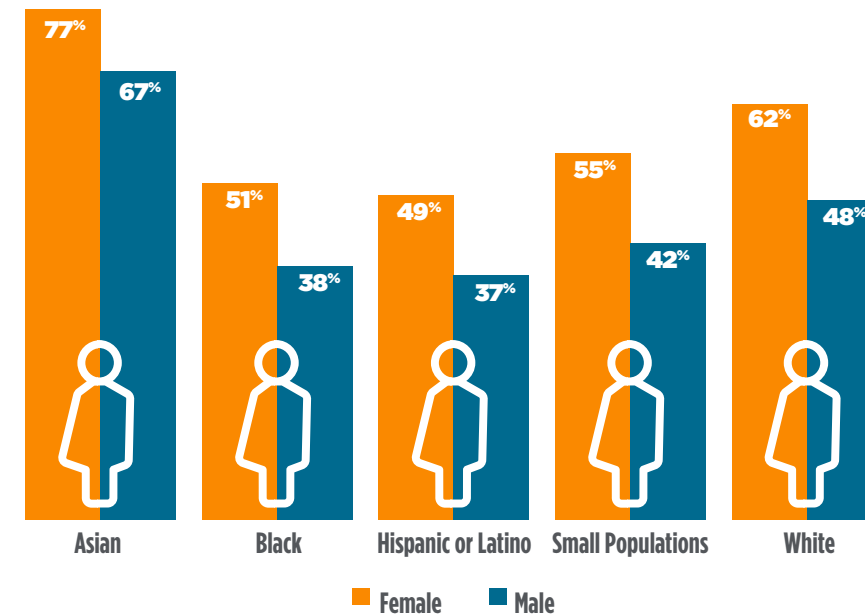
HIGH SCHOOLERS GOING STRAIGHT TO COLLEGE

Indiana's college-going rate has declined yearly since 2015, but 2021 was the first year the rate held steady at 53 percent.

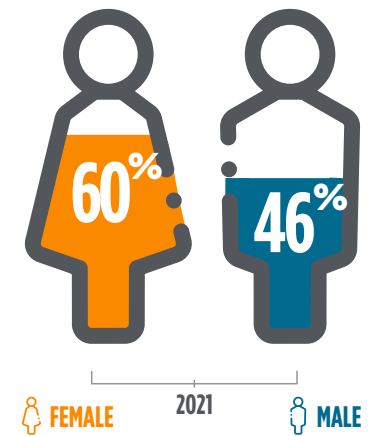


COLLEGE-GOING

Across all races and ethnicities, women are more likely to go to college right after high school.



GENDER GAP College-Going



On average, men continue to go to college at a lower rate than women.

INDIANA COLLEGE CORE

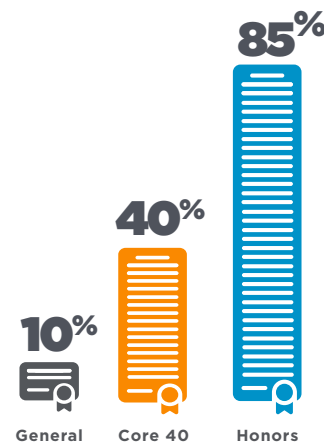


More high schools are offering the Indiana College Core with a goal of having more than 500 schools by 2026. 2,093 students earned the Indiana College Core in 2021. The Indiana College Core is a 30-hour block of credits that transfers among all of Indiana's public institutions.

HIGH SCHOOL DIPLOMA TYPE

Honors diploma earners are far more likely to go to college.

% of Diploma Earners Who Enroll in College



EARLY COLLEGE CREDIT

66% of 2021 high school graduates earned some form of early college credit such as dual credit or Advanced Placement.



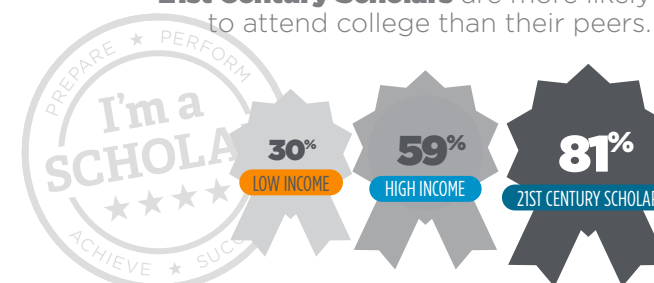
GEOGRAPHIC COMPARISONS

College-going rates vary by location.



SOCIOECONOMIC STATUS

21st Century Scholars are more likely to attend college than their peers.



“College”

covers the range of education options beyond a high school diploma, including credentials of less than one year up through a four-year bachelor's degree.

