



Tim Sands
Acting President
October 19, 2012

Investing for Impact

A TIME OF TRANSITION & MOMENTUM



TEST OF OUR MISSION IS STUDENT SUCCESS

PURDUE IS DOING MUCH BETTER THAN PASSING

- Graduates made 40+ space flights
- Helped take Curiosity to Mars
- At least 11 are senior executives at Fortune 500s
- Ranked 8th in long-term value of degree –WSJ SmartMoney

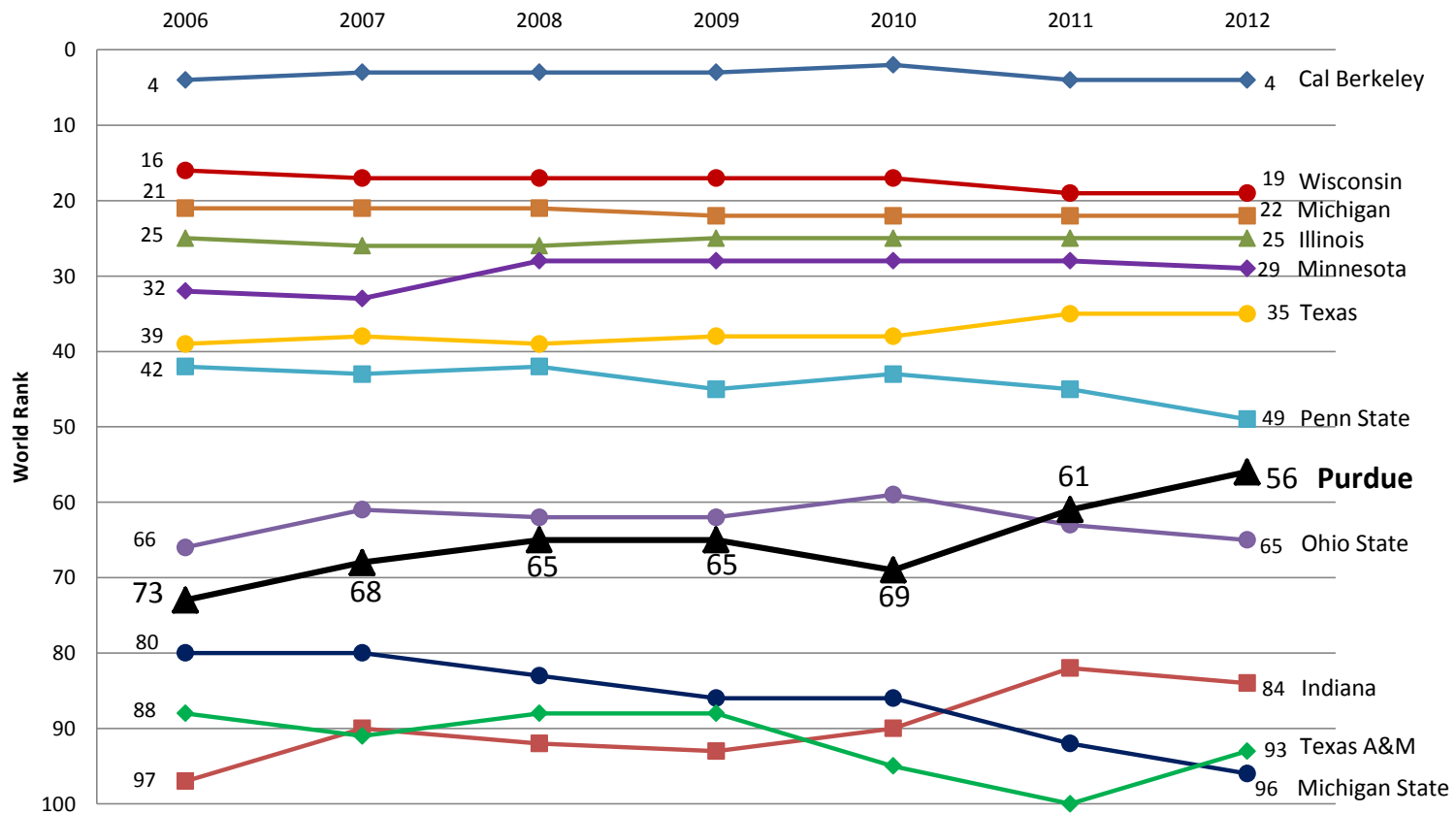
Replicating this success for the next generation is our top priority



PURDUE
UNIVERSITY

ACADEMIC RANKINGS OF WORLD UNIVERSITIES

PEER & BIG TEN HISTORICAL TRENDS



Purdue's upward trajectory is unmatched

CHANGING HIGHER ED ENVIRONMENT

Drivers

1. Engineer/STEM Shortage
2. New Learning Technologies & Techniques
3. Return of Manufacturing
4. Changing R&D model
5. Shifting Funding Sources



Partnership

Purdue's Proactive Response

- Engineering Strategic Growth
- IMPACT program
- Research/Technology Parks
- Technical Assistance Program
- PurdueHub-U
- Innovation & Commercialization Center
- Applied Research Institute

Areas for State Support

- Active Learning Space
- IN-MaC
- Research Funding
- Line-item Support

2013 – 2015 OPERATING REQUEST

Performance Funding (FY 2015 Amounts)

	West Lafayette	Regional Campuses	Total
Budget Reduction	-\$16,369,035	-\$5,493,710	-\$21,862,745
Overall Degree Completion	\$4,430,375	1,706,672	6,137,047
At-Risk Student Degree Completion	1,652,204	1,305,498	2,957,702
High Impact Degree Completion	4,079,538	0	4,079,538
Student Persistence Incentive	N/A	293,038	293,038
On-time Graduation Rate Metric	7,344,970	722,018	8,066,988
Institution Defined Productivity	1,268,600	127,665	1,396,265
TOTAL	2,406,652	-1,338,819	1,067,833
<i>Percent Change</i>	1.0%	-1.7%	0.3%
Debt Service (Cumulative)	3,236,373	8,833,281	12,069,654

Request is submitted based on the assigned values of the performance measures and other instructions issued by CHE and the State Budget Agency.

2013 – 2015 LINE ITEM BUDGET REQUESTS

FY 2015 Amounts

	Increase	% Change
Statewide Technology	672,899	10.4%
Agriculture Research & Extension	3,000,000	41.4%
County Agricultural Extension Educators	366,252	5.1%
Technical Assistance Program (TAP)	2,583,375	136.8%
Center for Paralysis Research	21,659	4.1%
TOTAL LINE ITEM BUDGET REQUESTS	6,644,185	28.4%



CAPITAL REQUEST

2013-15 Legislative Request

Projects	Status	Priority	Bonding Authority
WL - Active Learning Center	New	One	\$60,000,000
PNC - Student Services and Activity Complex – Planning Funds	Previously Authorized	Two	\$1,000,000
PNC - Student Services and Activity Complex	Previously Authorized	Two	\$23,700,000
PUC - Emerging Technologies Building – Planning Funds	Previously Authorized	Three	\$2,400,000
PUC - Emerging Technologies Building	New	Three	\$35,000,000
IPFW - South Campus Renovations	New	Four	\$42,700,000
R&R Formula Funding	New	Five	\$37,059,897*
WL - Animal Disease Diagnostic Laboratory (BSL-3)	Previously Authorized	Six	\$30,000,000
IPFW - Northeast Indiana Innovation Center	Previously Authorized	No Rank	\$10,000,000

*Biennial Cash Appropriation

INTRODUCTION TO ACTIVE LEARNING



INVESTMENTS IN RESEARCH

Research Incentive Incremental Amounts Requested and Funded per Biennium

	2003-2005	2005-2007	2007-2009	2009-2011	2011-2013
Requested	\$0	\$12,418,282	\$10,490,324	\$10,147,211	\$10,085,250
Appropriated	\$5,215,016	\$10,787,744	\$10,490,324	\$0	\$6,101,576

West Lafayette Operating Appropriations per Biennium

	2003-2005	2005-2007	2007-2009	2009-2011	2011-2013
Appropriated	\$233,010,461	\$241,258,923	\$262,033,737	\$241,119,044	\$233,843,356

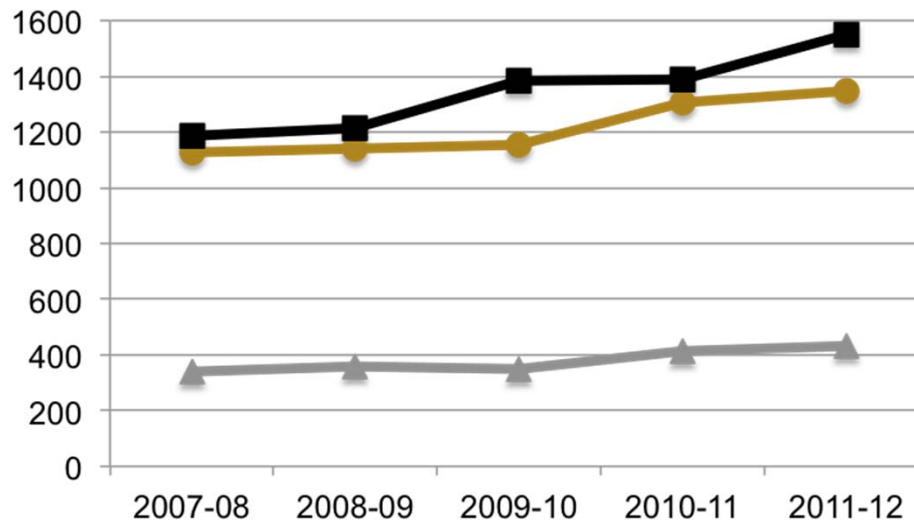
University's responsibility is to:

- Ensure that our laboratories are equipped and ready to advance discovery
- Contribute funding to new research that pushes the boundaries of discovery
- Develop the Indiana economy

These responsibilities require funding, even if they are not tied to a performance metric.

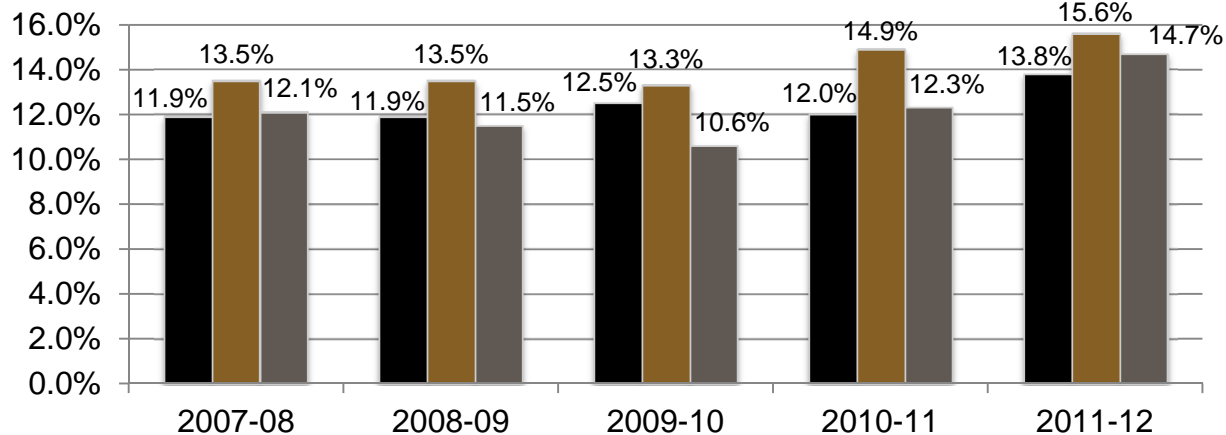
REGIONAL CAMPUS DEGREES

Total Bachelor's and Master's Degrees Awarded



- IPFW
- Calumet
- ▲ North Central

Annual Bachelor's Degree Production as a Ratio of Undergraduate FTE



If all students graduated in 4 years, ratio would = 25%

TRENDS IN MANUFACTURING

ONCE-IN-A-GENERATION OPPORTUNITY

- Manufacturers increasingly shortening supply chains by making products closer to customers
- U.S. government concentrating on manufacturing
 - New National Network for Manufacturing Innovation supports regional efforts

Indiana needs a coordinated effort to pursue this federal funding, up to \$2 billion worth.



IN-MaC

PURDUE, IVY TECH AND VINCENNES

- Will enable these educational institutions to collaborate with the state and its companies
- VA, MI and OH developing similar centers; already competing for federal funding and new investments.

Institution strengths in manufacturing and workforce development will make IN-MaC stand out in attracting high-technology manufacturing



FOCUS

PURDUE, IVY TECH AND VINCENNES



- 1) Creating manufacturing knowledge
- 2) Transferring knowledge to the private sector
- 3) Workforce development

IN-MaC will strengthen the infrastructure that supports manufacturing innovation

FUNDING

- Requesting \$10M for 10 years in seed funds from state
- Center will be self-sustaining after 10 years
- Additional funds will come from:
 - University donors
 - \$4.5M in revenues from industry partners
 - \$8-25M in federal funds





Tim Sands
Acting President
October 19, 2012

Investing for Impact