



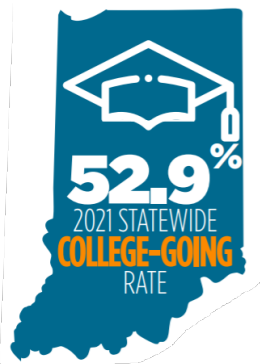
COMMISSION FOR HIGHER EDUCATION PARTNERSHIP PENTAGON

October 2023

Non-Profit and Community Organization Partner Support & Resource Guide

The Commission for Higher Education (CHE) has set long-term goals to address higher education trends, such as reversing the declining college-going rates for youth and adults, continuing to improve student persistence and completion and increasing graduate retention in Indiana. These strategic areas are part of improving and reevaluating overall college attainment rates for Indiana. **The ultimate goal of this guide is to inform our partners by providing updated information and avenues of support to strengthen these efforts.**

2023 COLLEGE GOING DATA



As reflected in the [2023 CHE College Going, Enrollment and Completion data](#), this year Indiana's college-going rate held steady from 2020 to 2021 at 53%. 81% of 21st Century Scholars enrolled in college. The college-going rate includes all options of postsecondary education and training including certificates, two- and four-year degrees.

While the overall rate, **rounded, remained at 53%**, challenges persist across the board. Enrollment rates throughout [different demographics](#) include:

- Hispanic or Latino students: 43%
 - Black students: 45%
 - Male students: 46%
 - Low-income, non-Scholars: 30%
-



21st CENTURY SCHOLARS AUTOMATIC ENROLLMENT

Created in 1990, the [21st Century Scholars](#) program is Indiana's key to narrowing gaps in educational attainment. The scholarship covers up to full tuition and fees at Indiana colleges and universities for students from low-income backgrounds. Currently, 81% of 21st Century Scholars attend college versus their low-income peers at 30%.

Initially students were required to apply during their 7th and 8th grade years for the program, but legislation was passed this year to allow for automatic enrollment. On July 1st, CHE auto-enrolled all eligible 7th and 8th grade students into the 21st Century Scholars program based on Free and Reduced-Price Lunch eligibility.

- In the 2027 cohort, the number of students enrolled in the program more than doubled, **going from 19,900 students to over 46,000.**
- **Each year, 20,000 additional students** on average are expected to be enrolled in the program than in the past.



INDIANA PRE-ADMISSIONS: YOUR PATH TO COLLEGE

The [*Indiana Pre-Admissions: Your Path to College*](#) initiative from CHE, in partnership with Indiana higher education institutions, launched this fall with students receiving a letter introducing the initiative. Indiana high school seniors from participating high schools (**327 high schools**) have been pre-admitted to participating in-state public and private institutions based on their cumulative GPA and/or SAT scores, pending an official application to the institution and completing any additional requirements. This allows students to view post-graduation options prior to filling out applications.

- **38 higher education institutions** participated.
- The pre-admissions letter was sent to over **56,000 high school seniors**.
- On average, students were pre-admitted to **24 institutions**.
- **28%** of students were admitted to **all 38** campuses.




CAREER AND TECHNICAL EDUCATION


Through HEA 1002, [Career and Technical Education \(CTE\)](#) is now housed under CHE. CTE connects industry, workforce development and education through the development and implementation of relevant career and technical education programs to prepare students for high-skill, in-demand careers in fields such as: advanced manufacturing, IT, health sciences, agriculture, construction and public safety. CTE programs of study are a good option for Hoosiers to receive stackable postsecondary credentials, opening doors to more workforce opportunities and providing students the opportunity to begin a postsecondary program in high school. Work-based learning participation is emphasized, and employers are encouraged to play an active role in the CTE system.

- During the 2022-23 school year, **228,254 high school students** enrolled in at least one funded CTE course, representing nearly 60 percent of all high school students in Indiana.
- Almost **32,000 high school seniors** from the graduating class of 2023 earned CTE concentrator status.
- CTE's priority areas include a focus on **dual credit enrollment, credential attainment and work-and-learn learning participation**. This is supported by efforts to standardize and improve program quality, provide career coaching and advising and emphasize workforce placement.
- CTE aligns with CHE's strategy to strengthen the Indiana education to workforce talent pipeline, allowing for a more seamless transition and more options for students to earn postsecondary credentials.



THE INDIVIDUAL ECONOMIC IMPACT OF HIGHER EDUCATION

 ECONOMIC METRICS <small>by</small> EDUCATION LEVEL 08-21-23				
EDUCATION LEVEL	INDIANA UNEMPLOYMENT RATE (2023)	INDIANA LABOR PARTICIPATION RATE (2023)	WAGES – MEDIAN INCOME (U.S.) (2021)	WAGES – MEDIAN INCOME (U.S.) (2021) (AGES 25-34)
LESS THAN A HIGH SCHOOL DIPLOMA	6.6%	44.6%	\$31,300	\$32,500
HIGH SCHOOL DIPLOMA	2.9%	56.4%	\$40,450	\$39,700
SOME COLLEGE OR ASSOCIATE DEGREE	2.2%	67.1%	\$46,300	\$42,200
BACHELOR'S DEGREE + UP	2.0%	73.3%	\$72,900	\$65,000

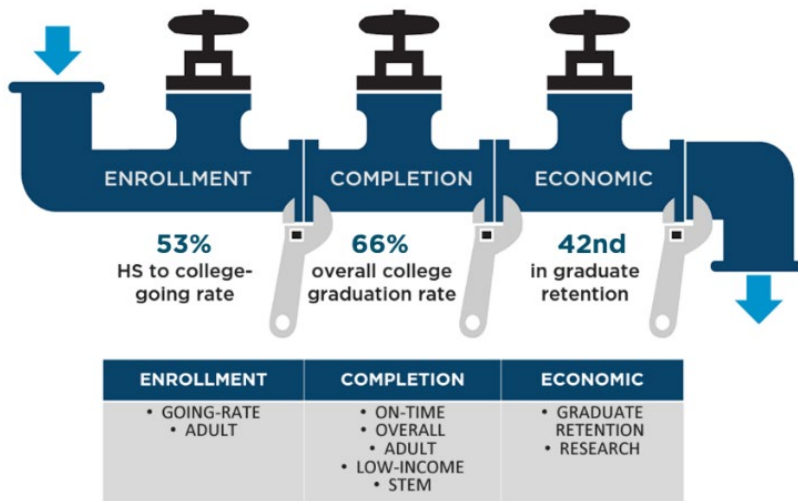
 SOCIAL METRICS <small>by</small> EDUCATION LEVEL 08-21-23				
EDUCATION LEVEL	PERCENT OF HOOSIERS (2021)	PERCENT OF WORKING-AGE ADULTS USING SNAP BENEFITS (U.S.) (2021)	INFANT MORTALITY (PER 1,000 BIRTHS) (U.S.) (2020)	LIFE EXPECTANCY (U.S.)
LESS THAN A HIGH SCHOOL DIPLOMA	10%	21%	7.7	72 years
HIGH SCHOOL DIPLOMA	33%	15%	6.9	79 years
SOME COLLEGE OR ASSOCIATE DEGREE	29%	11%	5.4	80 years
BACHELOR'S DEGREE + UP	28%	2%	3.0	85 years

INDIANA IS TOP 10 IN:

- **1st** in the Midwest in need-based financial aid.
- **3rd** in the nation in attainment of certificates and certifications (below an associate degree).
- **5th** in the nation in need-based financial aid.
- **6th** in the nation in tuition holding (lowest average increase in tuition and mandatory fees).
- **9th** best in attracting students to our higher education institutions.



HOW INDIANA IS SUPPORTING ADULT LEARNERS



CHE has established three priority areas to support Indiana's Big Goal of reaching 60 percent attainment rate by 2025 - college enrollment, completion and graduate retention. The Commission is guiding efforts to establish Indiana as a top ten state in **training and education for adults, as well as the rate of completion and utilization of credit for prior learning.**

Credit for Prior Learning (CPL)

- **CPL Library:** part of a statewide effort led by CHE to increase awareness and utilization of credit for prior learning (CPL) to honor the work, training and education already achieved by adult learners and support their credential attainment, the vision for the CPL library is, in part, to provide an interactive tool to showcase and explore CPL options and pathways, supporting students, higher education institutions and employers in identifying education and talent development opportunities aligned with desired skills and competencies.
- **Prior Learning Assessments:** state financial aid dollars can be used to pay fees associated with prior learning assessments.

Workforce Ready Grant

- The [Workforce Ready Grant](#) covers tuition, regularly assessed fees and other approved mandatory fees for Hoosiers with a high school diploma but less than a college degree to earn a certificate in some of the state's highest-demand, high-wage industries such as advanced manufacturing, building and construction, health and life sciences, IT and business services, and transportation and logistics.
- Eligibility is **not** based on financial need. The grant covers over 125 high-value certificate programs.
- Since the creation of the Workforce Ready Grant in 2017, there have been **more than 68,000 enrollments and 38,000 completions.**



Adult Student Grant

- The [Adult Student Grant](#) is specifically designed to meet the unique needs of working adults starting or completing an associate degree, bachelor's degree or certificate by providing up to a \$2,000 grant.
- This allows for financially eligible adult learners (or independent students as defined by the Free Application for Federal Student Aid, FAFSA) to complete their degree while attending part-time, prioritizing flexibility and supports needed to ensure their education is complimentary to their existing priorities and schedule.

Frank O'Bannon Grant Funding Increase

- This year, Indiana increased the maximum [Frank O'Bannon Grant](#) award amount by **35%**. Financially eligible students, including adult learners, can file the FAFSA to receive funding through the Frank O'Bannon Grant for their higher education.

HOW YOU CAN SUPPORT ADULT LEARNERS AS A COMMUNITY ORGANIZATION PARTNER

Promote transparency, connectivity of resources by:

- Sharing information and actively engaging with adults on opportunities to further their training and education beyond high school, including state grant funding for short- and longer-term credentials (certifications, certificates, associate degrees and bachelor's degrees) and to potentially earn credit toward a credential from prior work and life experience.
- Provide targeted supports (e.g., transportation, childcare, emergency micro-grants) to help alleviate barriers for adult learners seeking to go back or stay in school.
- Connect adult learners to employers, highlighting those who offer tuition reimbursement or other forms of employee support such as schedule flexibility, career coaching or mentoring.

If you are looking for ways to cross-collaborate with other sectors, connect with the Commission for support!



RESOURCE GUIDE

- [2023 Indiana College Readiness Dashboard](#)
- [2023 Indiana College Completion Dashboard](#)
- [Indiana Pre-Admissions Press Release](#)
- [Workforce Ready Grant](#)
- [Adult Student Grant](#)
- [Pre-Admissions PowerPoint](#)
- [About Indiana Pre-Admissions](#)
- [21st Century Scholars](#)

CONNECT WITH US

Is there a way CHE can support you in these efforts?

Contact Madison Prillwitz at mprillwitz@che.in.gov

 facebook.com/IndianaCHE/

 [@HigherEdIN](https://www.instagram.com/HigherEdIN)

 linkedin.com/company/iche/

UPCOMING EVENTS

Commission Meeting

11.09.23 | 9AM to 2PM

Virtual Meeting

[Microsoft Teams Link](#)

2023 Student Advocates Conference

12.07.23 | 9AM to 2PM

Virtual Event

[Register here](#)