



Next Level Programs of Study

Implementation Webinar

November 18, 2020

Anthony Harl, Assistant Director of CTE - Programming



Next Level Programs of Study

- Improved Course Offerings
- Flexibility and Consistency
- Direct Alignment
- Career Resources

Next Level Programs of Study

INDIANA IS RETHINKING CAREER AND TECHNICAL EDUCATION!

With Next Level Programs of Study, CTE can provide both exploration and preparation for a future career.

What is a Program of Study?

A more comprehensive and structured approach to offering CTE that includes stronger course sequences, greater career resources, improved professional development for instructors, and direct connections between secondary and postsecondary education.

Next Level Programs of Study Features:

Improved Course Offerings:
Next Level Programs of Study will improve the quality of CTE course sequences through updated, relevant course standards aligned to postsecondary certificate programs. Courses have also been restructured to increase the consistency of CTE course delivery. This format will help ensure that all students have the opportunity to master the same skills regardless of where or how they complete a course.

Direct Alignment:
Next Level Programs of Study directly aligns secondary courses to postsecondary courses to ensure dual credits students earn in high school will count toward a postsecondary credential.

Career Resources:
Students and families will have more complete career advising and guidance resources, such as this Career Guide, to help make informed decisions that maximize a student's opportunities while in high school.

STUDENTS CAN COMPLETE ONE YEAR'S WORTH OF COLLEGE AND EARN POSTSECONDARY CERTIFICATES WHILE IN HIGH SCHOOL.

TURN TO PAGES 50-51 FOR A FULL LIST OF NEXT LEVEL PROGRAMS OF STUDY.

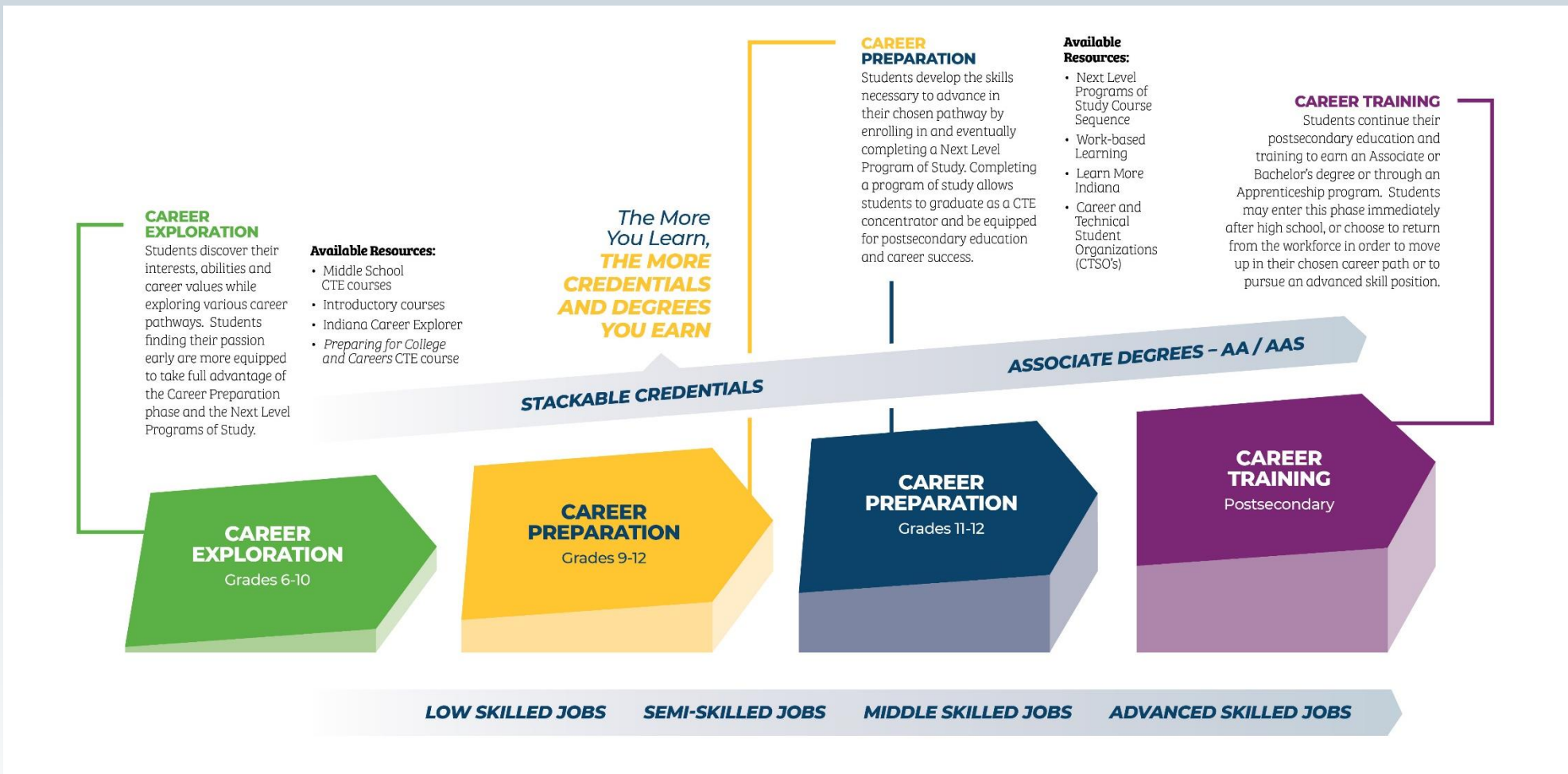
16 | INDIANA CAREER GUIDE



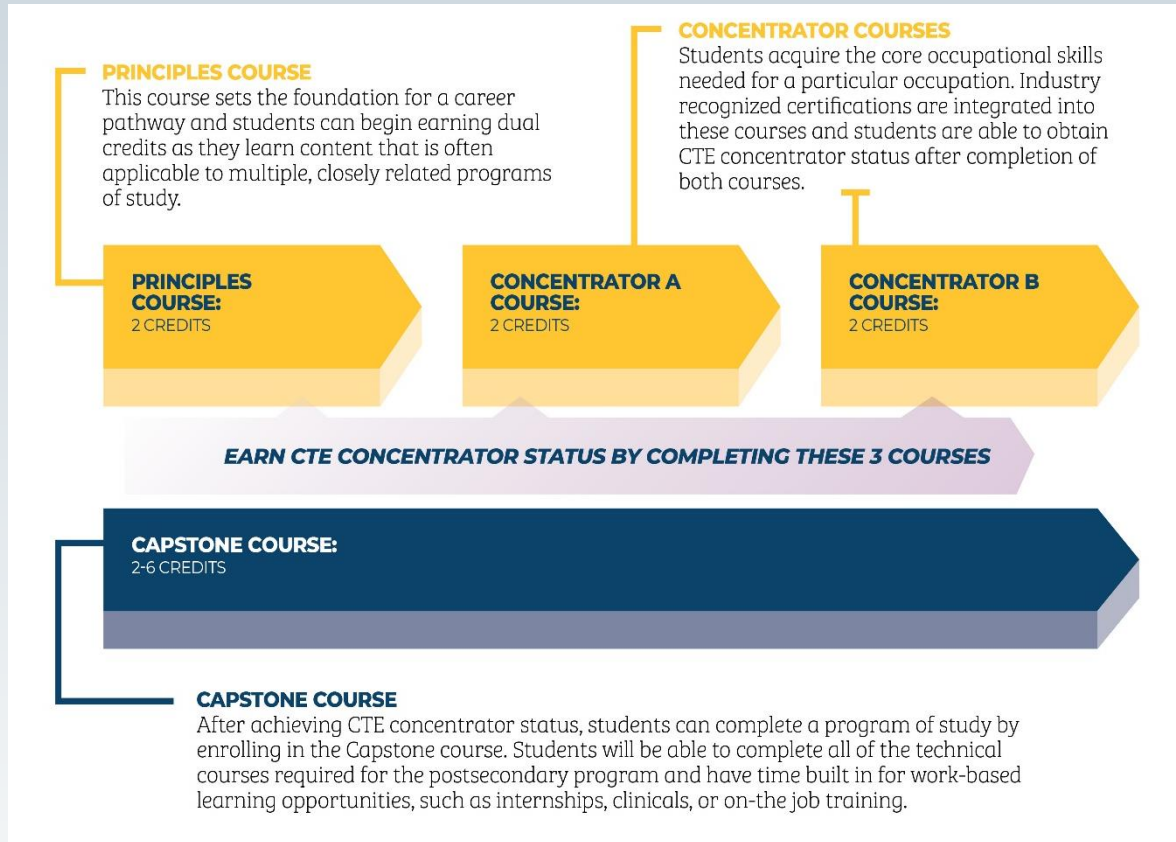
Advantages

- Offers CTE Students a technical skills equivalent to the STGEC.
- Ensure all students have access to same content and standards.
- A CTE Concentrator is comparable for each pathway.
- Pathway Capstone course will provide an opportunity to complete technical courses for TC/CG or customize.
- Each Program of Study will help students meet WBL requirements and up to 4 graduation pathways options.

CTE Career Pathways



Next Level Programs of Study



- Creates a 3 course – 6 credit Concentrator Course Sequence for each pathway.
- Principles, Concentrator A and Concentrator B
- Equals a Level I course that is currently offered for full 3 credits per semester experience.



Next Level Programs of Study

Next Level Career Pathways/Programs of Study		Perkins V - Current/Original Courses			
Cluster	Career Pathway		Concentrator A		Concentrator B
Advanced Manufacturing	Automation and Robotics	5610	Industrial Automation and Robotics I	5612	Industrial Automation and Robotics II
Advanced Manufacturing	Digital Manufacturing - Industry 4.0 (New)	5608	Advanced Manufacturing I	5606	Advanced Manufacturing II

Perkins V - Next Level Programs of Study Course Sequences					
Principles - Level I		CTE Concentrator A - Level I		CTE Concentrator B - Level I	Pathway Capstone - Level II
Principles of Advanced Manufacturing		Industrial Power Fundamentals		Mechatronics Systems	Automation and Robotics Capstone
Principles of Advanced Manufacturing	4728	Robotics Design and Innovation		Digital Manufacturing Systems	Advanced Manufacturing - Industry 4.0 Capstone



Course Titles and Descriptions



- **NLPS CTE Course Titles and Descriptions**
 - **Courses available for 2021-2022 SY**
 - **Complete 2022-2023 CTD**
 - **2022-2023 CTE CTD Spreadsheet**
 - **<https://www.in.gov/gwc/2437.htm>**



NLPS Pathway Review

Next Level Programs of Study



 Advanced Manufacturing Welding Technology 			
<p>Welding is the process of joining or melting two or more pieces of metal, plastic or glass together as part of the manufacturing process of building a larger structure, product or machine.</p> <p>LEADS TO THESE JOBS: Welder, Combo Welder, Welding Inspector</p>			
Principles	Concentrator A	Concentrator B	Capstone
Principles of Welding Technology 2 credits	Shielded Metal Arc Welding 2 credits	Gas Metal Arc Welding 2 credits	Welding Technology Capstone 2-6 credits

- Includes:
- Pathway Overview
- Course Sequence
- Course Description
- Course Details
- Postsecondary Competencies



Coming Soon!

- **CTE Dual Credit Crosswalk for 2021-2022 for NLPS Courses**
- **Developing an Online Career Pathway Tool**





Next Level Programs of Study

Transition and Implementation Plan





Transition Plan

- **Current Courses are included in the 2021-2022 CTD without credit restrictions.**
- **Each School or Career Center may choose to opt into NLPS courses.**
- **NLPS Courses are available and will be funded during the 2021 -2022 school year.**



Transition by Cohort

- **2022 Cohort (Seniors) May Use Perkins IV Pathways or Perkins V Pathways with Current or NLPS Courses.**
- **2023 Cohort (Juniors) and 2024 Cohort (Sophs) Must Use Perkins V Pathways with Current or NLPS Courses.**
- **2025 Cohort (Frosh) Must Use Perkins V Pathways with NLPS Courses**



Additional Transition Details

- **Current Level I Courses, like Welding Technology I, will be limited to 1 credit per semester and 2 credits per year in the 2022-2023 SY.**
- **Current Level II Courses, like Welding Technology II, will be limited to 1 credit per semester and 2 credits per year in the 2023-2024 SY.**
- **Current Advanced Courses will be phased out or redesigned by 2024-2025 SY.**



Next Level Programs of Study

Why Should Your School Transition?





Student Benefits

- **NLPS Courses provide benefits to students:**
 - **Access to New and Improved Pathways**
 - **Students have opportunities to explore multiple pathways.**
 - **Provide Multiple Options to Meet Grad Pathways**
 - **More Dual Credit Courses Available**
 - **Earn Postsecondary Credentials in High School**



New and Improved Pathways

Next Level Programs of Study			
Digital Manufacturing - Industry 4.0	Plumbing and Pipefitting	Insurance	IT Support and Service
Industrial Technical Maintenance - Electrical	Interactive Media	Medical Assistant	Software Development
Ag Mechanical and Engineering	Business Administration	Healthcare Specialist - CNA	Paralegal
Agriscience – Plants or Animals	Supply Chain and Logistics	Central Service Tech	Entrepreneurship
Precision Agriculture	Accounting	Culinary Arts – Baking and Pastry	Marketing and Sales
Civil Construction	Banking and Investment	Cybersecurity	Energy Technology



Concentrator Status

- **Students in the 2023 Cohort and beyond will be able to earn Concentrator Status in 1 year through a half-day program.**
- **Provides students the option to change or combine pathways.**





2025 Cohort

- **2025 Cohort (Frosh) Must Use Perkins V Pathways with NLPS Courses**
- **Need to Consider how they will proceed through a pathway.**
- **Do you want them to take the Principles Course during their Freshmen Year?**
 - **Ag, Business, Engineering, BioMed**

Which Pathways to Use

- **Changes at the Federal level has led to a lot of change at the State and Local level**
- **3 sets of rules – Perkins IV, Current Perkins V, NLPS**
- **Current Perkins V was never intended to be a long-term solution.**
- **NLPS represents the long-term plan.**
- **Every cohort can use NLPS**



Next Level Programs of Study

Things to Think About



Who?

- **How will you offer current courses and NLPS courses to multiple cohorts?**
 - **When will cohorts be taking courses?**
 - **3 – Yr Plan**

Where?

- **Will this program of study be offered at career center or at their home school?**
 - **Collaboration between home school and career center.**
 - **Level 1 Course Considerations**
 - **Principles Course vs Introductory Course**
 - **Technical Skills Development Course**



Other Common Questions

- **Funding**
- **Assignment Codes**
- **Scheduling and Grades**
- **Modifications to NLPS**





Implementation Workshops

- **Implementation Workshops after Thanksgiving**
- **Link to sign up for a workshop will be in the next bi-weekly update and posted on our website.**





Questions

Contact:

- PJ McGrew, Executive Director GWC,
PaMcgrew1@gov.in.gov
- Anthony Harl, Assistant Director of CTE –
Programs, aharl1@gov.in.gov
- Enjema Beckley, Career Specialist,
ebeckley@gov.in.gov