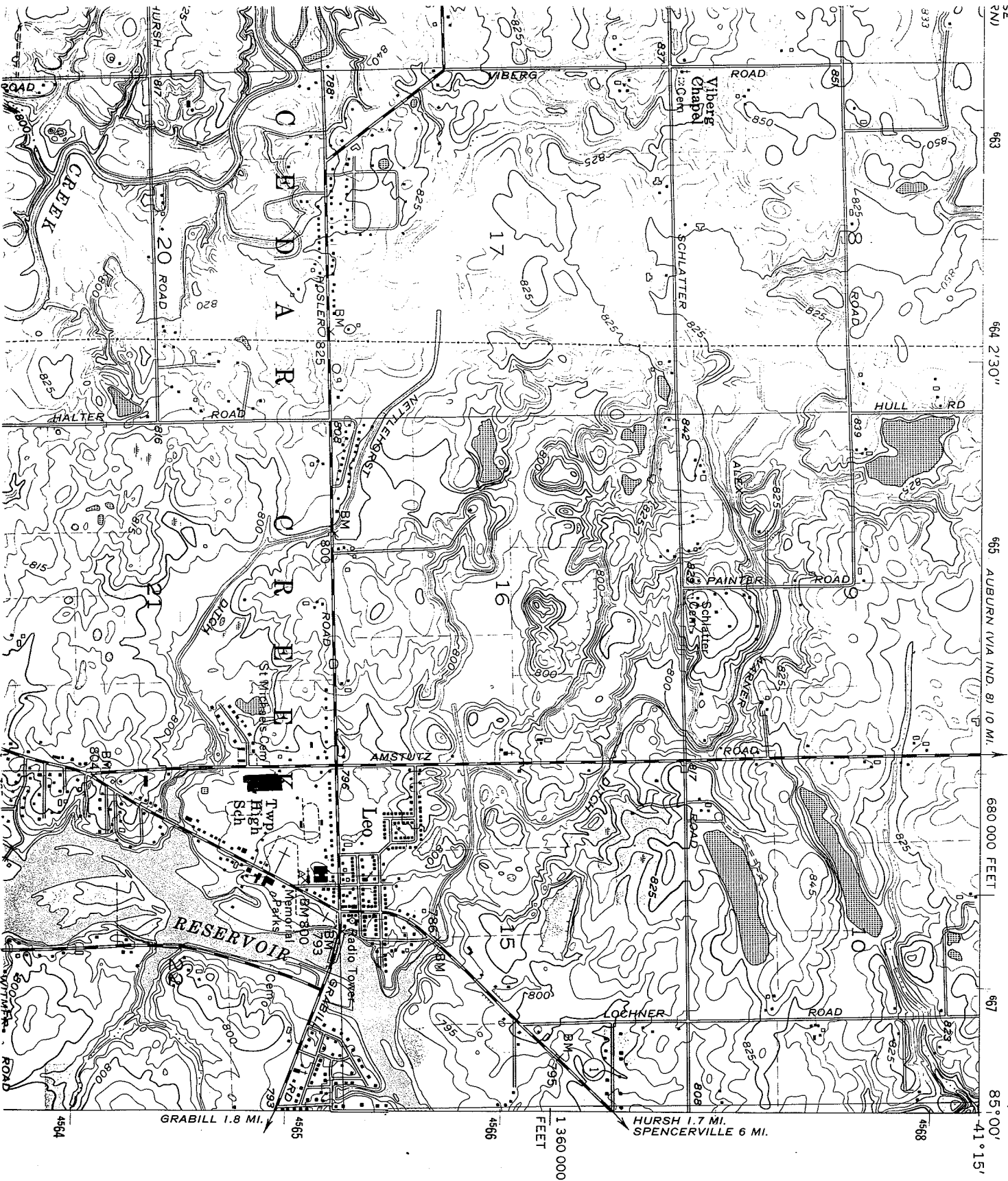


CEDARVILLE QUADRANGLE  
INDIANA—ALLEN CO.  
7.5 MINUTE SERIES (TOPOGRAPHIC)

4066 N. 51.  
(SAINT JOE)

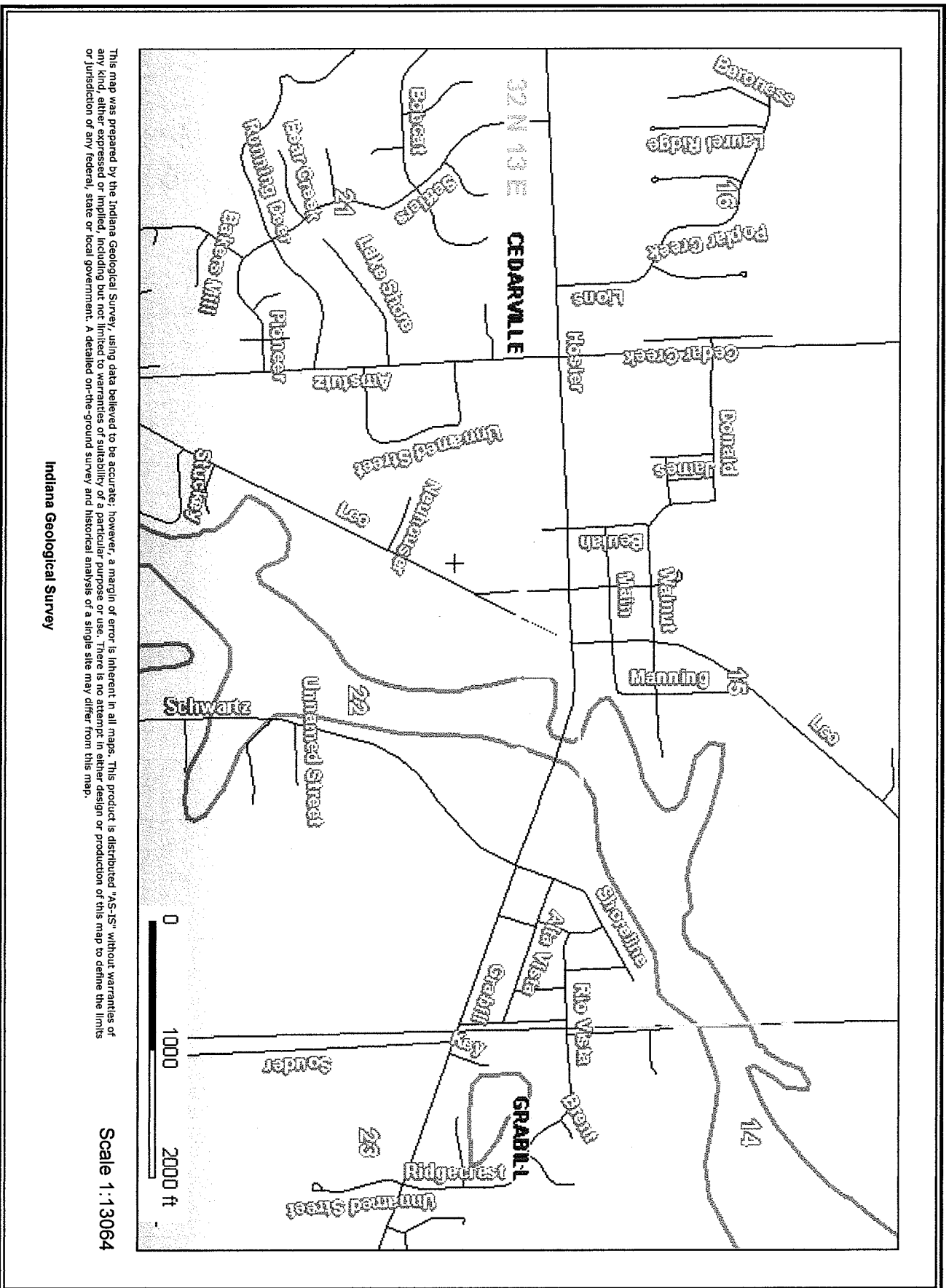


SE 2N  
563  
564 2'30"  
565 AUBURN VIA IND. 81 10 MI.  
660 000 FEET  
567  
85°00'  
41°15'

HURSH 20 ROAD  
GRABILL 1.8 MI.  
4564  
4565  
4566  
4568

HURSH 1.7 MI.  
SPENCERVILLE 6 MI.

1 360 000  
FEET



This map was prepared by the Indiana Geological Survey, using data believed to be accurate; however, a margin of error is inherent in all maps. This product is distributed "AS-IS" without warranties of any kind, either expressed or implied, including but not limited to warranties of suitability for a particular purpose or use. There is no attempt in either design or production of this map to define the limits or jurisdiction of any Federal, state or local government. A detailed on-the-ground survey and historical analysis of a single site may differ from this map.

Indiana Geological Survey

Scale 1:13064



Leo Road

Hosler Road

41.221884, -85.011980

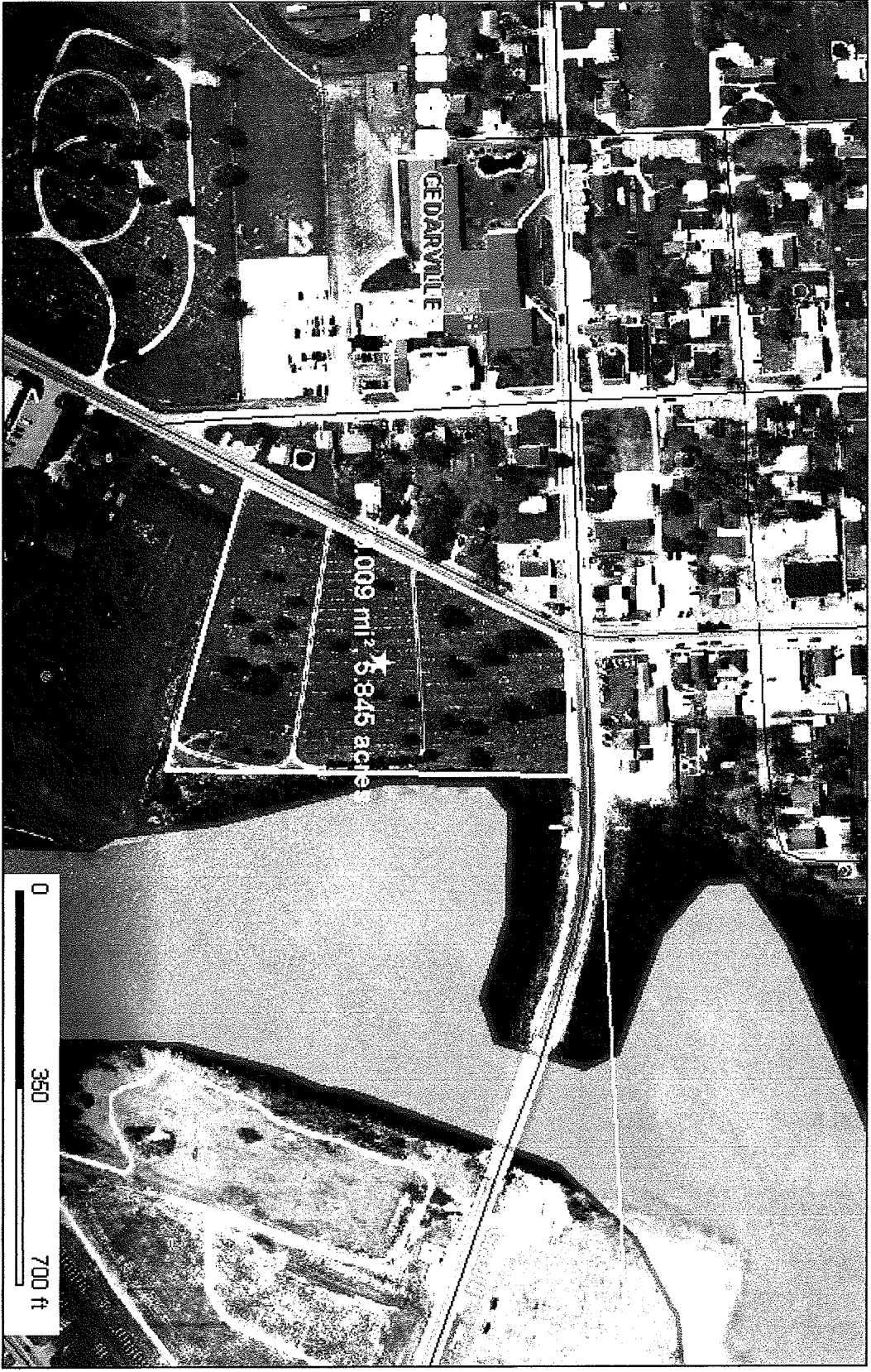
41.223139, -85.010894

41.223164, -85.010003

41.221104, -85.010108

Image: IndianaMap Framework Data  
© 2007 Europa Technologies  
© 2007 Tele Atlas

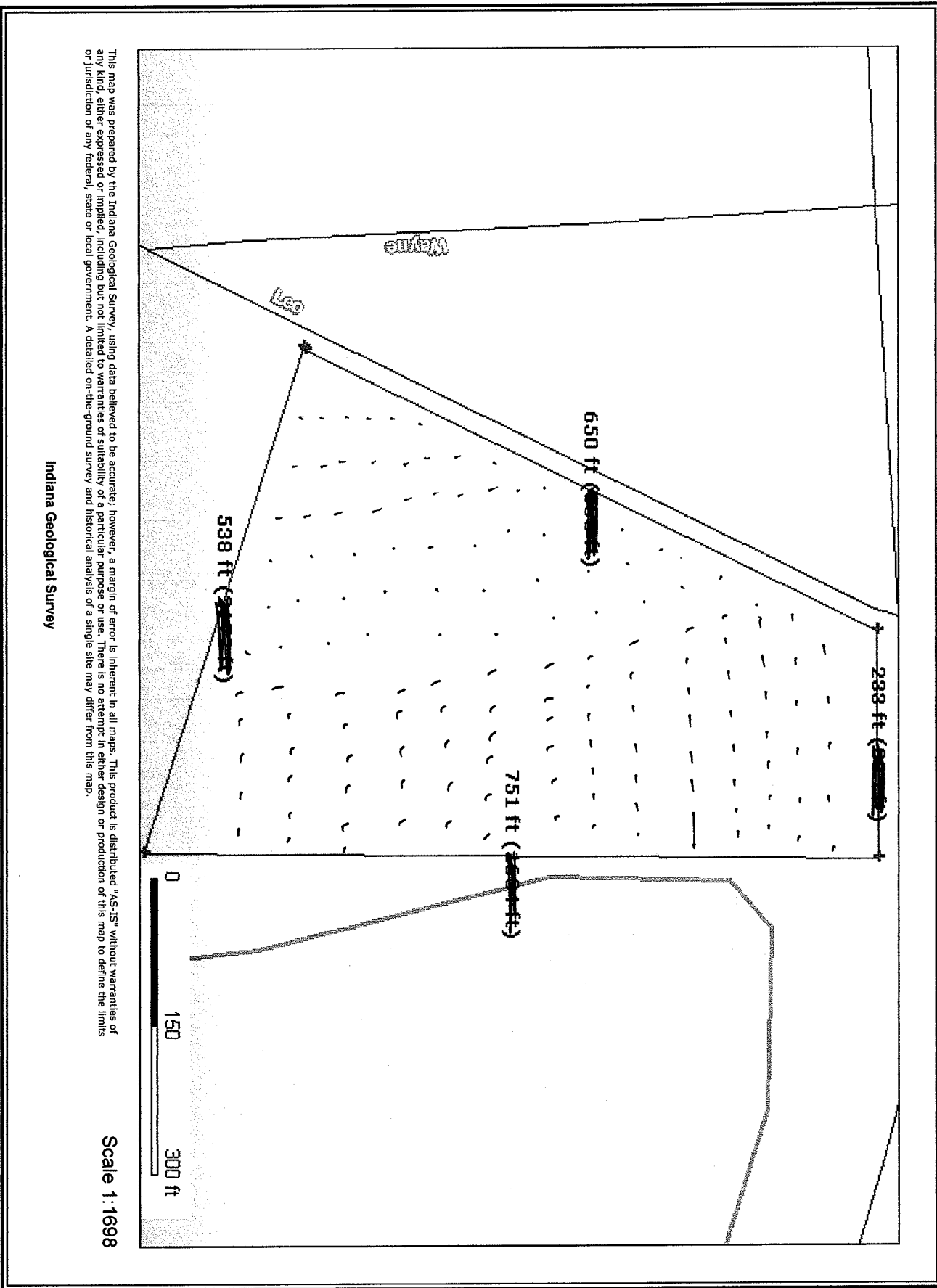
©2007  
Google



This map was prepared by the Indiana Geological Survey, using data believed to be accurate; however, a margin of error is inherent in all maps. This product is distributed "AS-IS" without warranties of any kind, either expressed or implied, including but not limited to warranties of suitability of a particular purpose or use. There is no attempt in either design or production of this map to define the limits or jurisdiction of any federal, state or local government. A detailed on-the-ground survey and historical analysis of a single site may differ from this map.

Indiana Geological Survey

Scale 1:3395



This map was prepared by the Indiana Geological Survey, using data believed to be accurate; however, a margin of error is inherent in all maps. This product is distributed "AS-IS" without warranties of any kind, either expressed or implied, including but not limited to warranties of suitability of a particular purpose or use. There is no attempt in either design or production of this map to define the limits or jurisdiction of any federal, state or local government. A detailed on-the-ground survey and historical analysis of a single site may differ from this map.

Indiana Geological Survey