

PLANTING NOTES

NAME	NO.	SIZE
WHITE DOGWOOD (CORNUS FLORIDA)	3	6" x 8"
HONEY LOCUST (SP. TRACANTHUS)	2	2" CAL
UPRIGHT YEW (TAXUS HICKSII)	60	18" x 24"
ENGLISH NY. (HEBBA HELIX)	60	2 1/2' POT

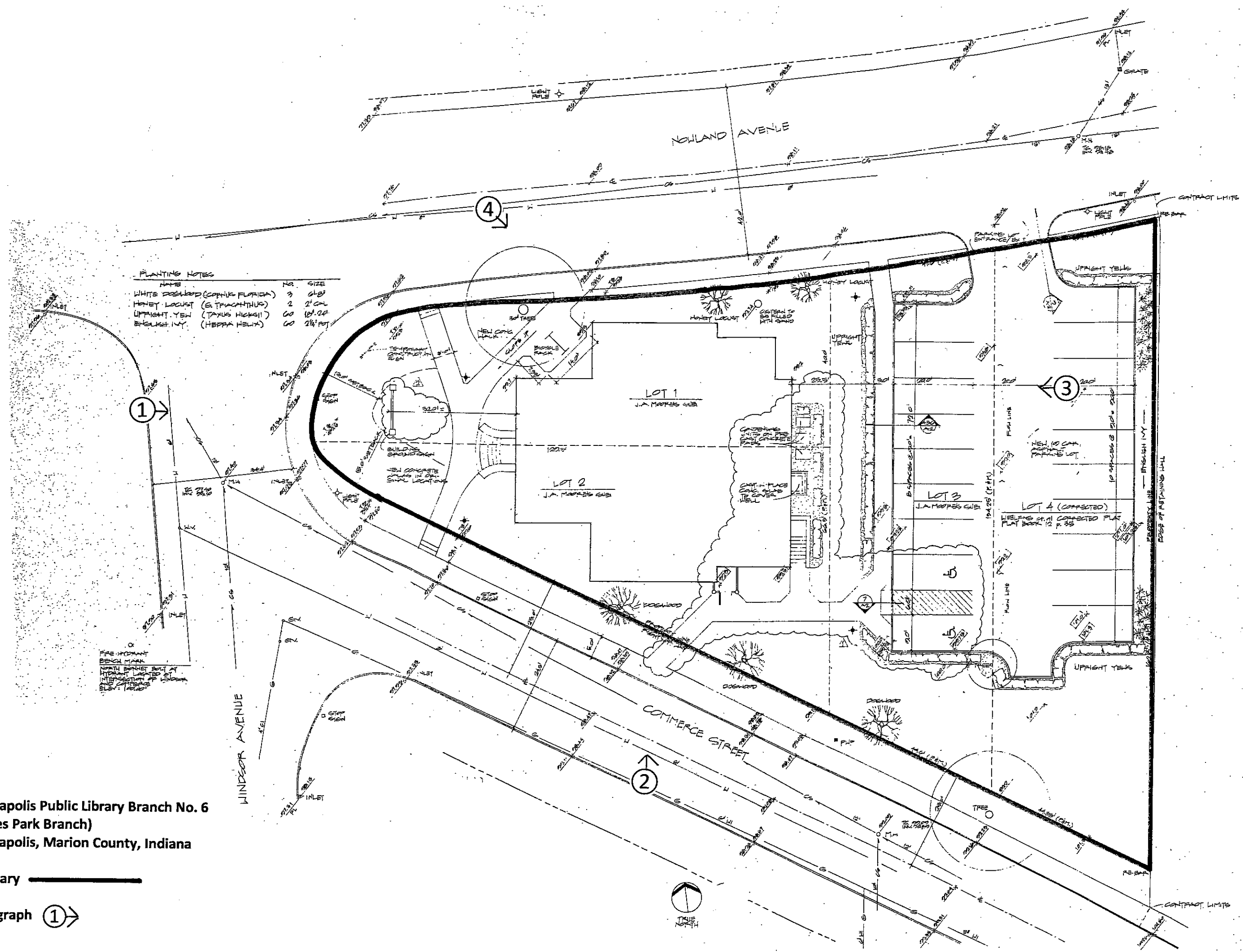
FIRE HYDRANT
BEACH MARK
NORTH BEACH MARK BY
HYDRANT LAYED OUT
INTERSECTION OF WINDSOR
AND COMMERCE ST. ELEV. 120.00

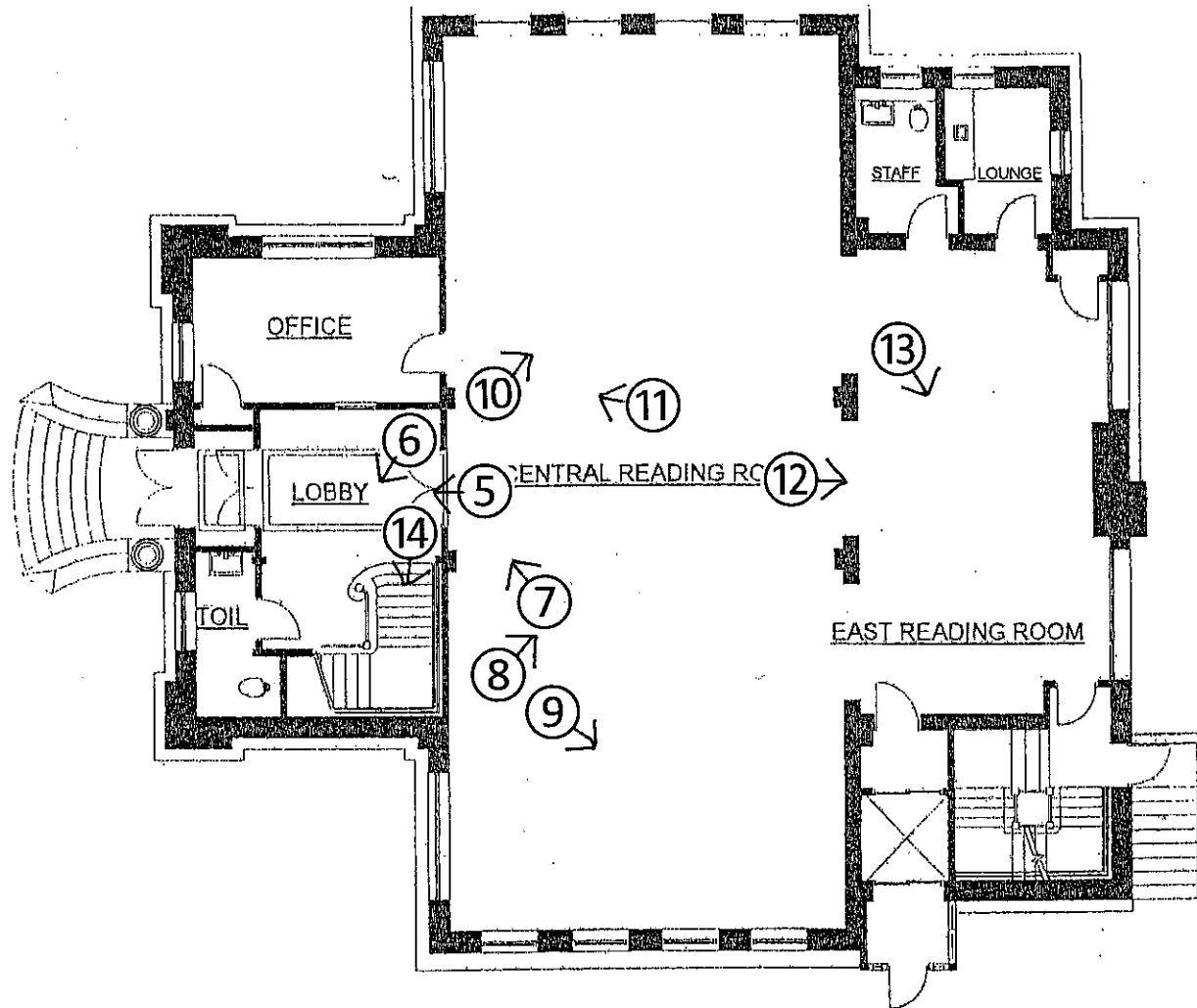
Indianapolis Public Library Branch No. 6
(Spades Park Branch)
Indianapolis, Marion County, Indiana

Boundary 

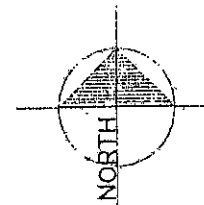
Photograph 

Scale: 1"=24'



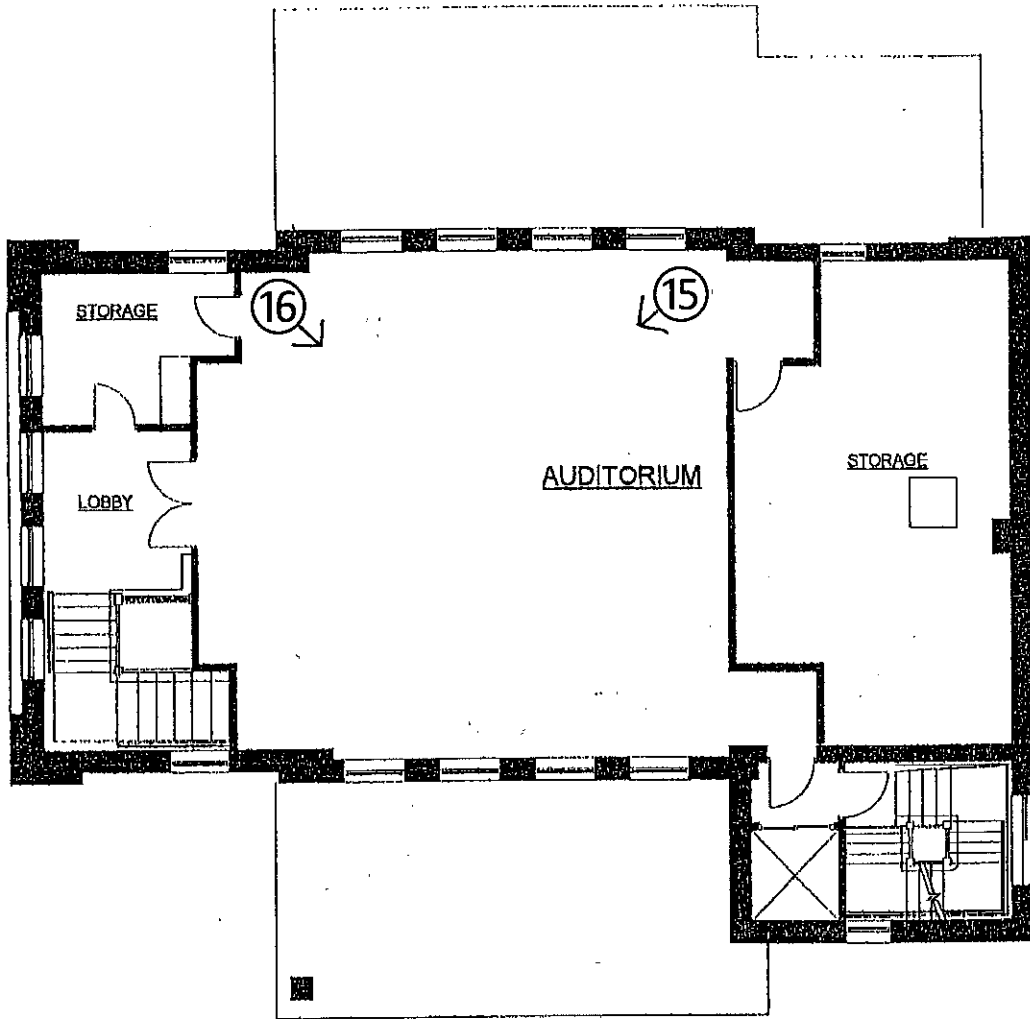


FIRST FLOOR PLAN

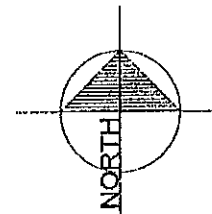


Indianapolis Public Library Branch No. 6
 (Spades Park Branch)
 Indianapolis, Marion County, Indiana

Photograph ① →

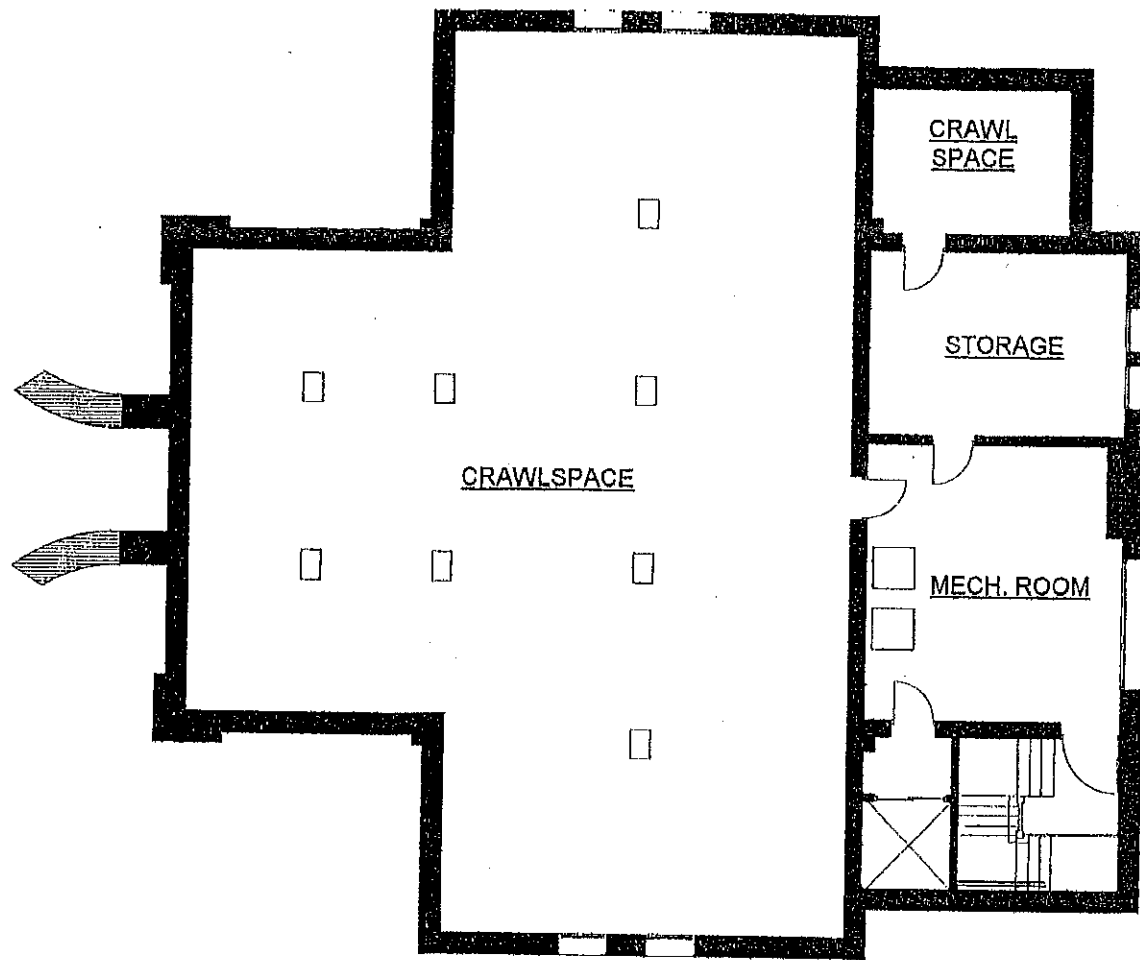


SECOND FLOOR PLAN

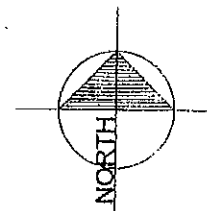


Indianapolis Public Library Branch No. 6
(Spades Park Branch)
Indianapolis, Marion County, Indiana

Photograph ① →



BASEMENT/CRAWLSPACE PLAN



Indianapolis Public Library Branch No. 6
(Spades Park Branch)
Indianapolis, Marion County, Indiana

Photograph ① →