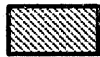


United States Department of the Interior
National Park Service

National Register of Historic Places

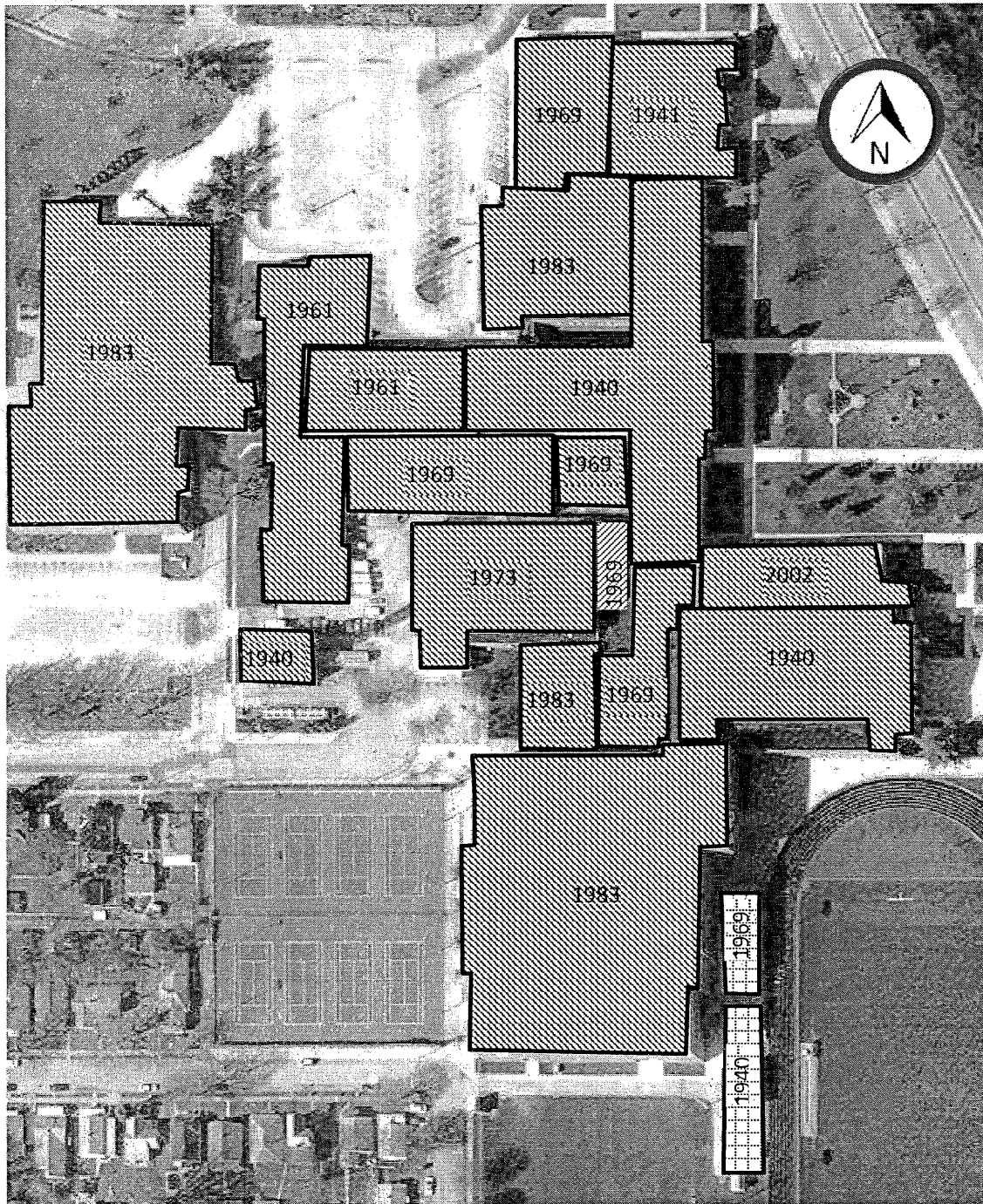
Richmond High School, Wayne County, IN



Contributing



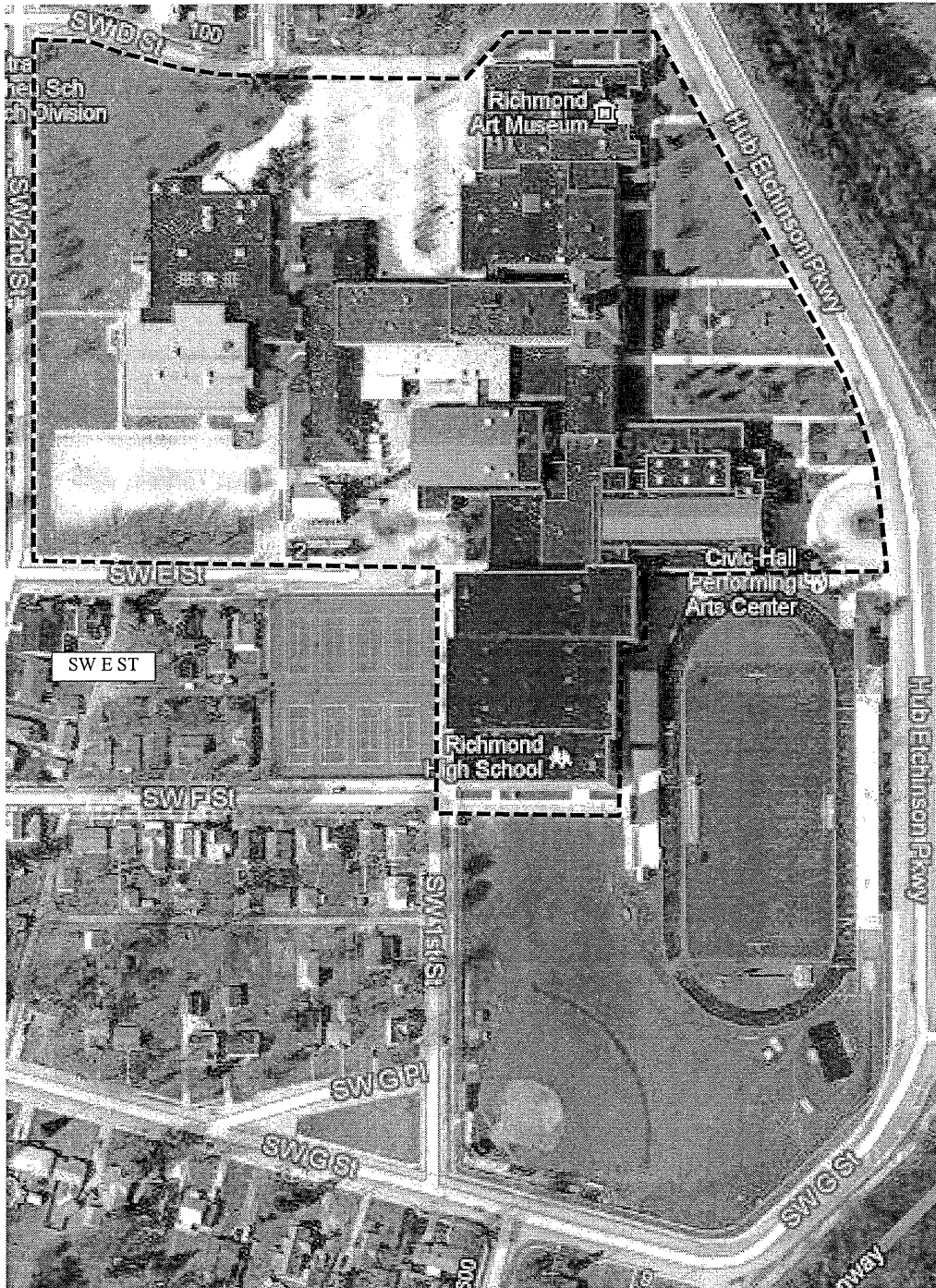
Non-contributing



National Register of Historic Places

Richmond High School, Wayne County, IN

Boundary — — — — —



National Register of Historic Places

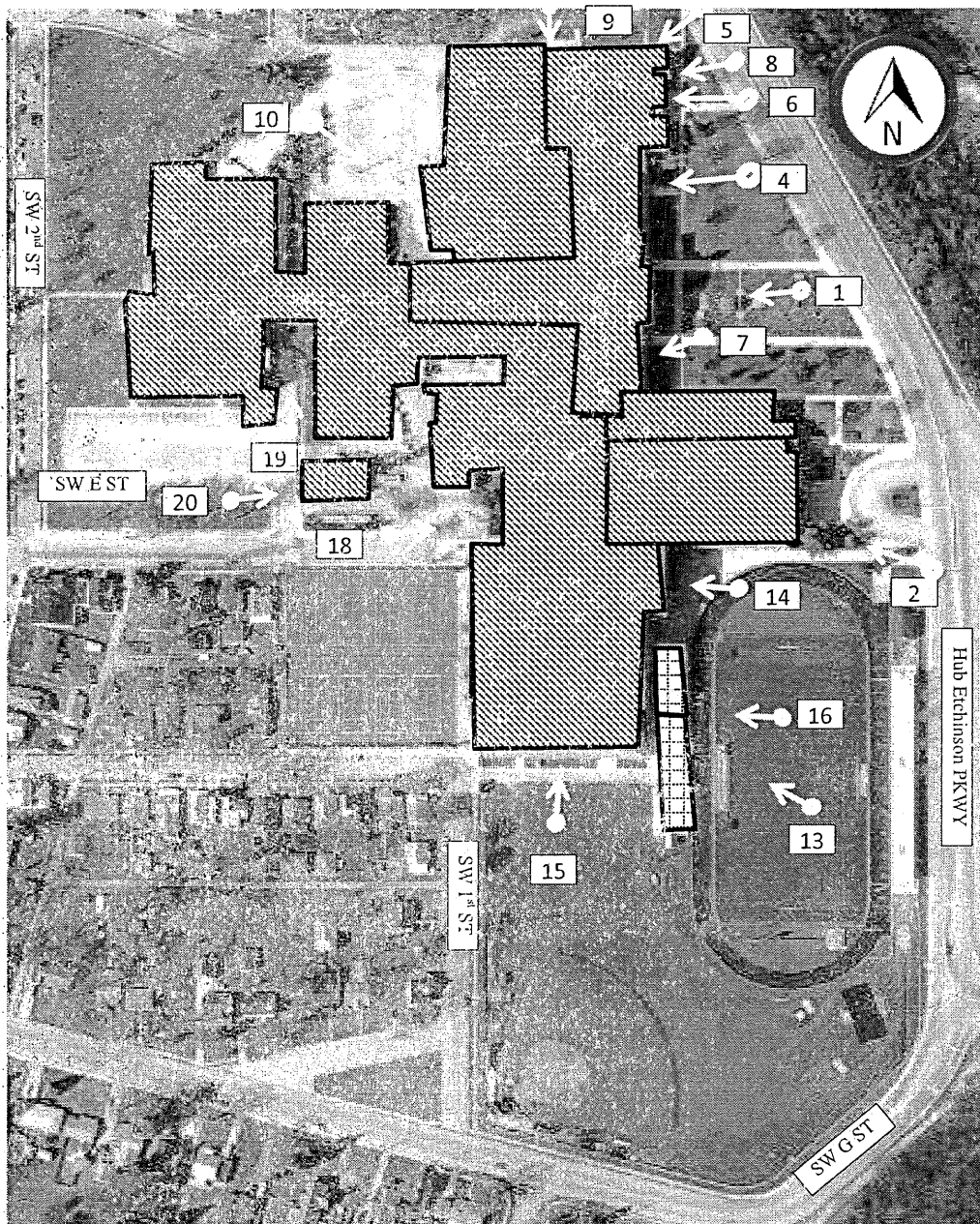
Richmond High School, Wayne County, IN



Contributing

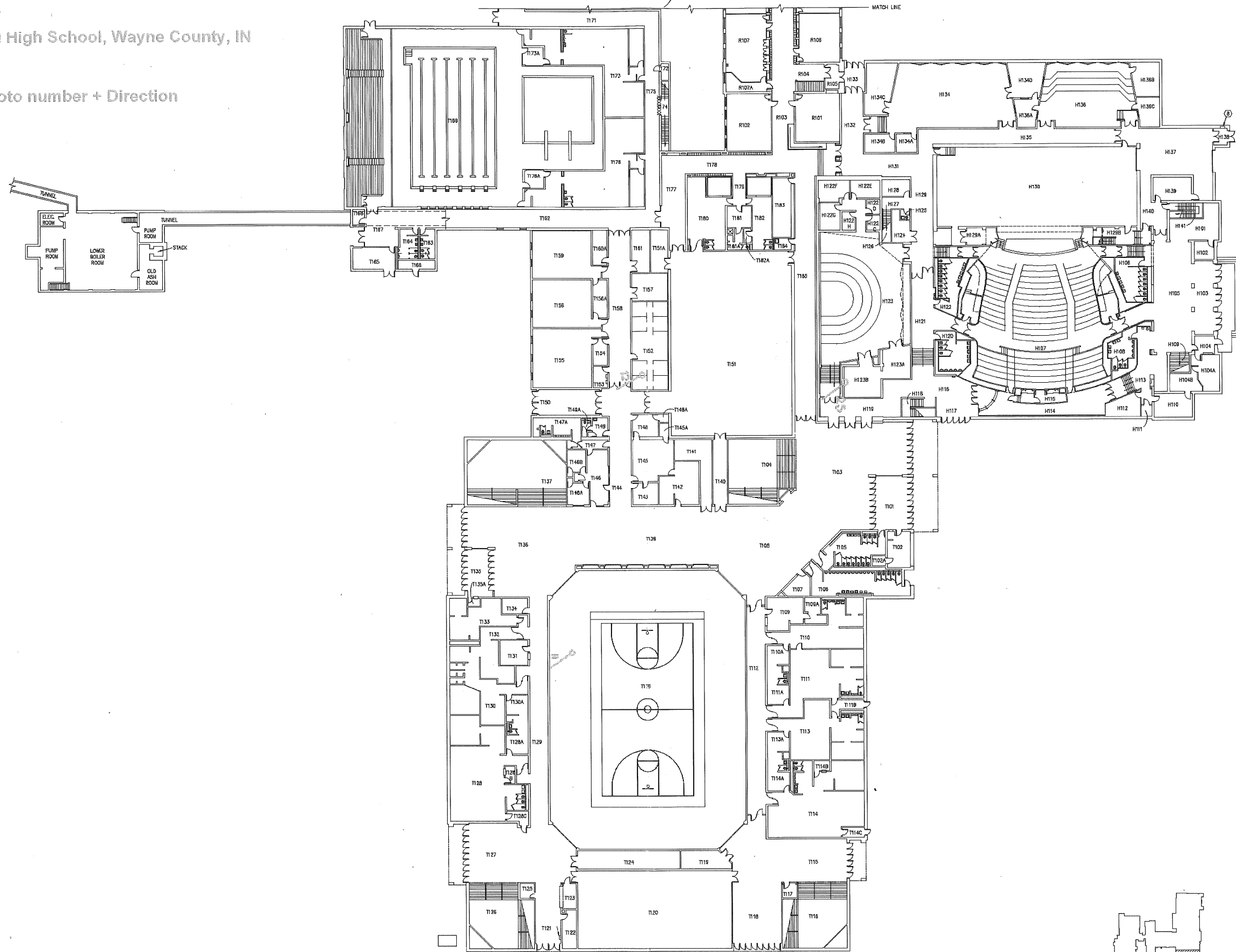


Photo number & direction

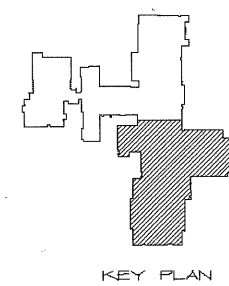


Richmond High School, Wayne County, IN

○ — Photo number + Direction



FIRST FLOOR SOUTH



KEY PLAN



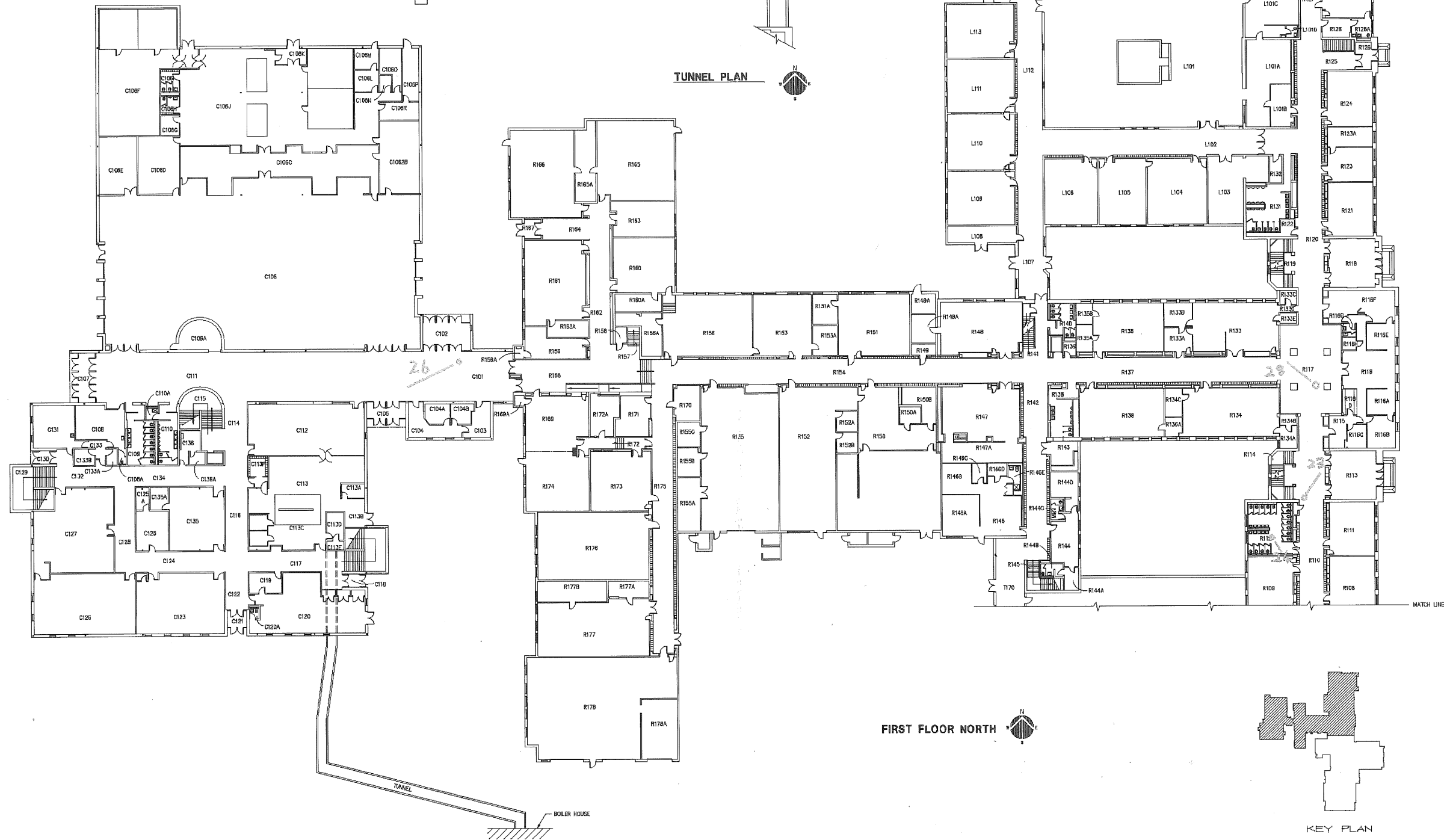
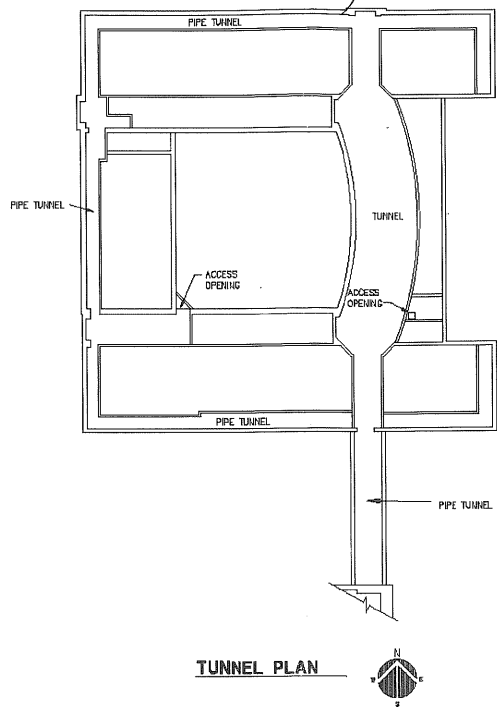
SECTION BY

RICHMOND HIGH SCHOOL
RICHMOND, INDIANA

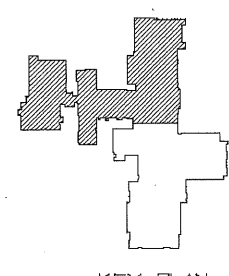
Project No. 884-1
 Architect: D. HOFERSTRUKT
 Date: FEBRUARY, 1988

Richmond High School, Wayne County, IN

○ Photo Number + Direction



FIRST FLOOR NORTH



KEY PLAN

Maze Design, Inc.
 107 Madison Street
 Richmond, IN 47404
 317.352.1200
 317.352.1201

DESIGNED BY

RICHMOND HIGH SCHOOL
 RICHMOND, INDIANA

Project No. 2004-1
 Designer: P. SPERSTOCK
 Date: FEBRUARY, 2005

Richmond High School, Wayne County, IN

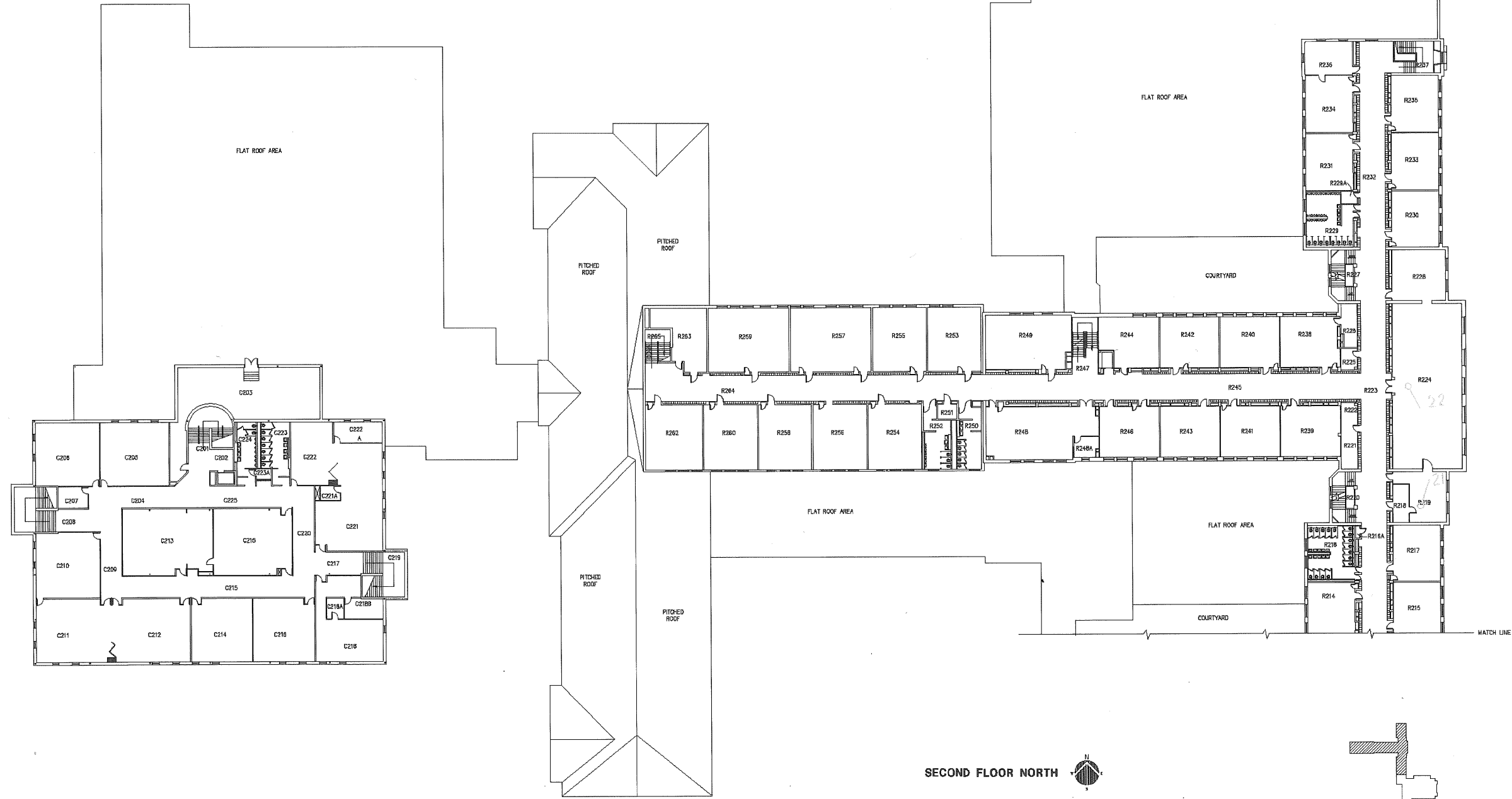
○ — Photo Number + Direction




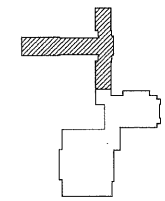
20111102 39

RICHMOND HIGH SCHOOL
RICHMOND, INDIANA

Project No. 2011-1
Architect: P. SPENCER
Designer:
Contractor: FERRARI, 2009
Scale: 1/8" = 1'-0"



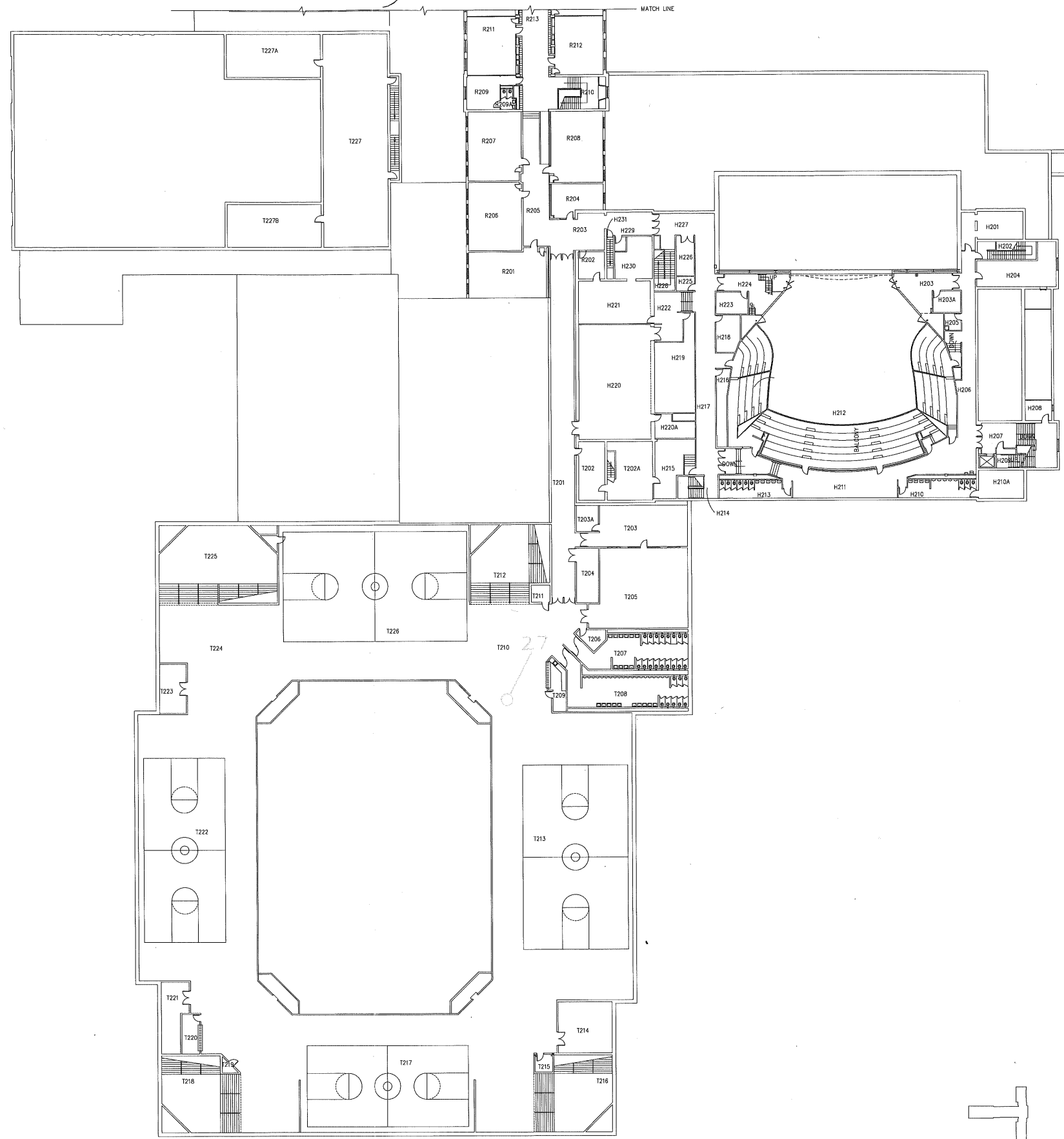
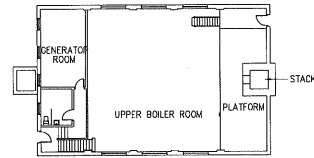
SECOND FLOOR NORTH 



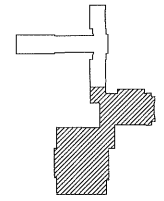
KEY PLAN

Richmond High School, Wayne County, IN

○ — Photo Number + Direction



SECOND FLOOR SOUTH



KEY PLAN



Prepared by

RICHMOND HIGH SCHOOL
RICHMOND, INDIANA

Project No. 0504-1
Coordinator: P. INERSTRUT
Designer:
Drawn:
Checked:
Date: FEBRUARY, 2007
Revision: No. Date

SECOND FLOOR SOUTH
FIRE ALARM
SELECTIVE
DEMOLITION PLAN

Drawing
of