

3865 / NE
3865 / NW
(SERVIA
SOUTH)
40° 52' 30"

UNITED STATES
DEPARTMENT OF THE INTERIOR
GEOLOGICAL SURVEY

LARGO
ROAD

SERVIA 6 MI.
2.6 MI. TO IND. 16

608

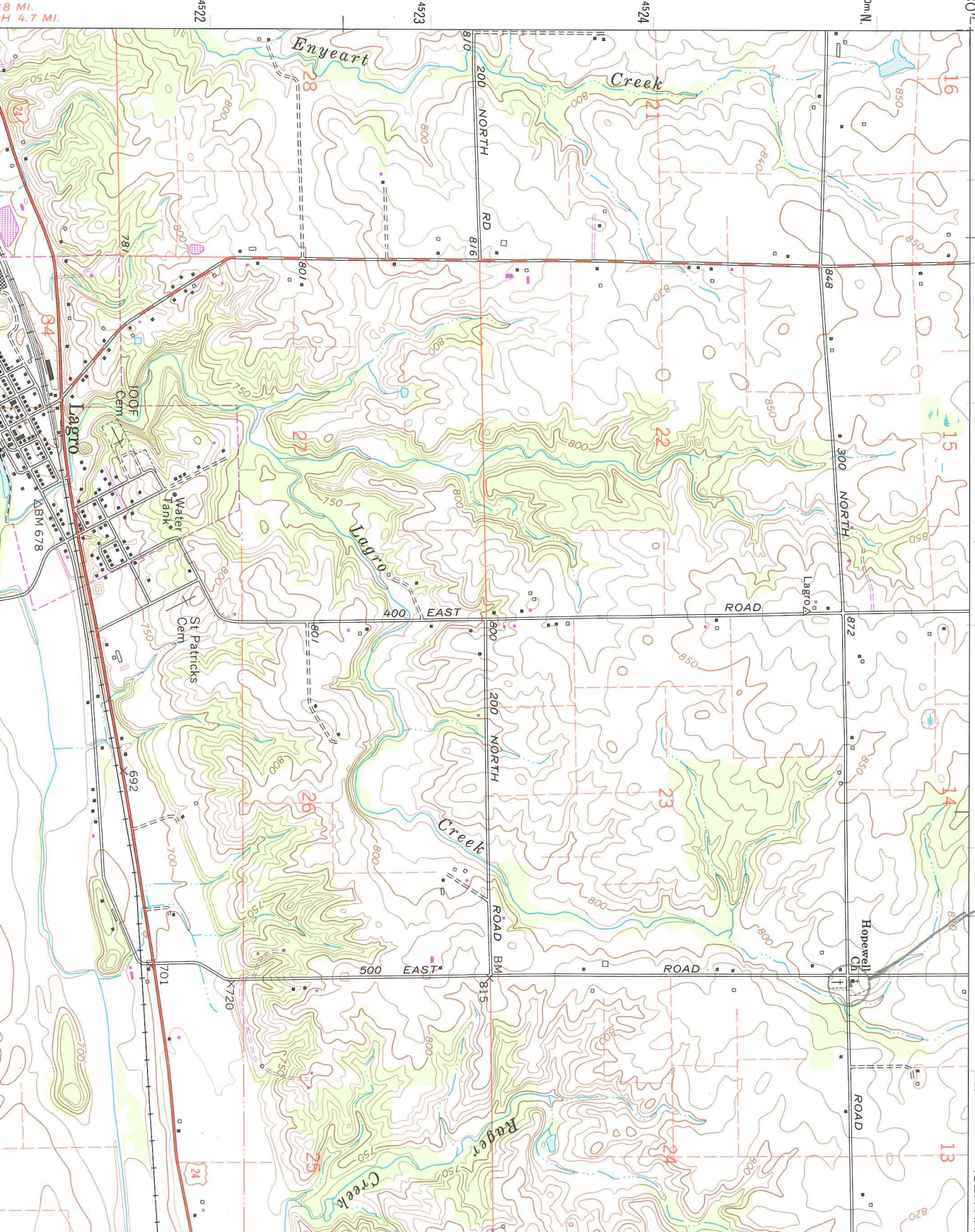
42'30" 609

610

3865 / NW
(SERVIA

HOPWELL METHODIST
EPISCOPAL CHURCH
WARREN CO. IN
IND 83 UTM
16 609610 4525163

STATE OF INDIANA
DEPARTMENT OF NATURAL RESOURCES
INDIANAPOLIS,



8 MI.
H 4.7 MI.

4522

4523

4524

4525000m N.

85° 45'

606000m E.

607

608

608

42'30" 609

610

3865 / NW
(SERVIA