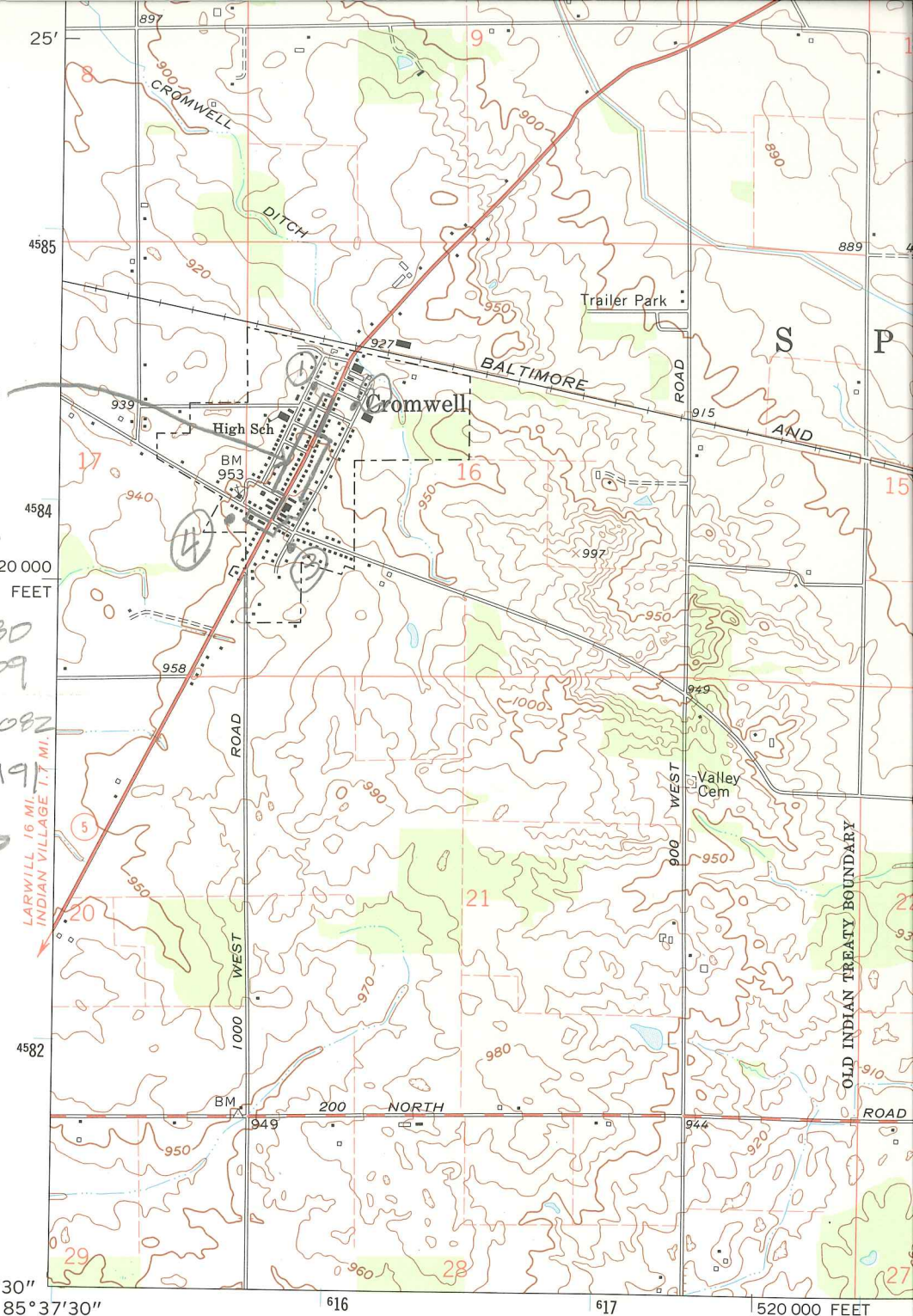


Cromwell Historic District
 Noble Co. IN
 National Register of Historic Places
 NAD 83 UTM 1 420 000 FEET

- ① 16 615 872 4584 680
 - ② 16 616 082 4584 609
 - ③ 16 615 805 4584 082
 - ④ 16 615 596 4584 191
- LIGONIER QUAD



(NORTH WEBSTER)
 3866 / SW

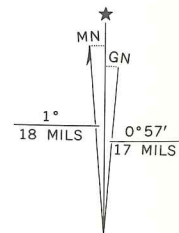
Mapped, edited, and published by the Geological Survey
 Control by USGS and USC&GS

Planimetry by photogrammetric methods from aerial photographs taken 1948. Topography by planetable surveys 1956
 Revised from aerial photographs taken 1972. Field checked 1973

Depth curves and soundings compiled from USGS-Indiana Department of Natural Resources lake charts

Projection and 10,000-foot grid ticks: Indiana coordinate system, east zone (transverse Mercator)
 1000-meter Universal Transverse Mercator grid ticks, zone 16, shown in blue. 1927 North American datum

Fine red dashed lines indicate selected fence and field lines where generally visible on aerial photographs. This information is unchecked



UTM GRID AND 1973 MAGNETIC DECLINATION AT CENTER OF