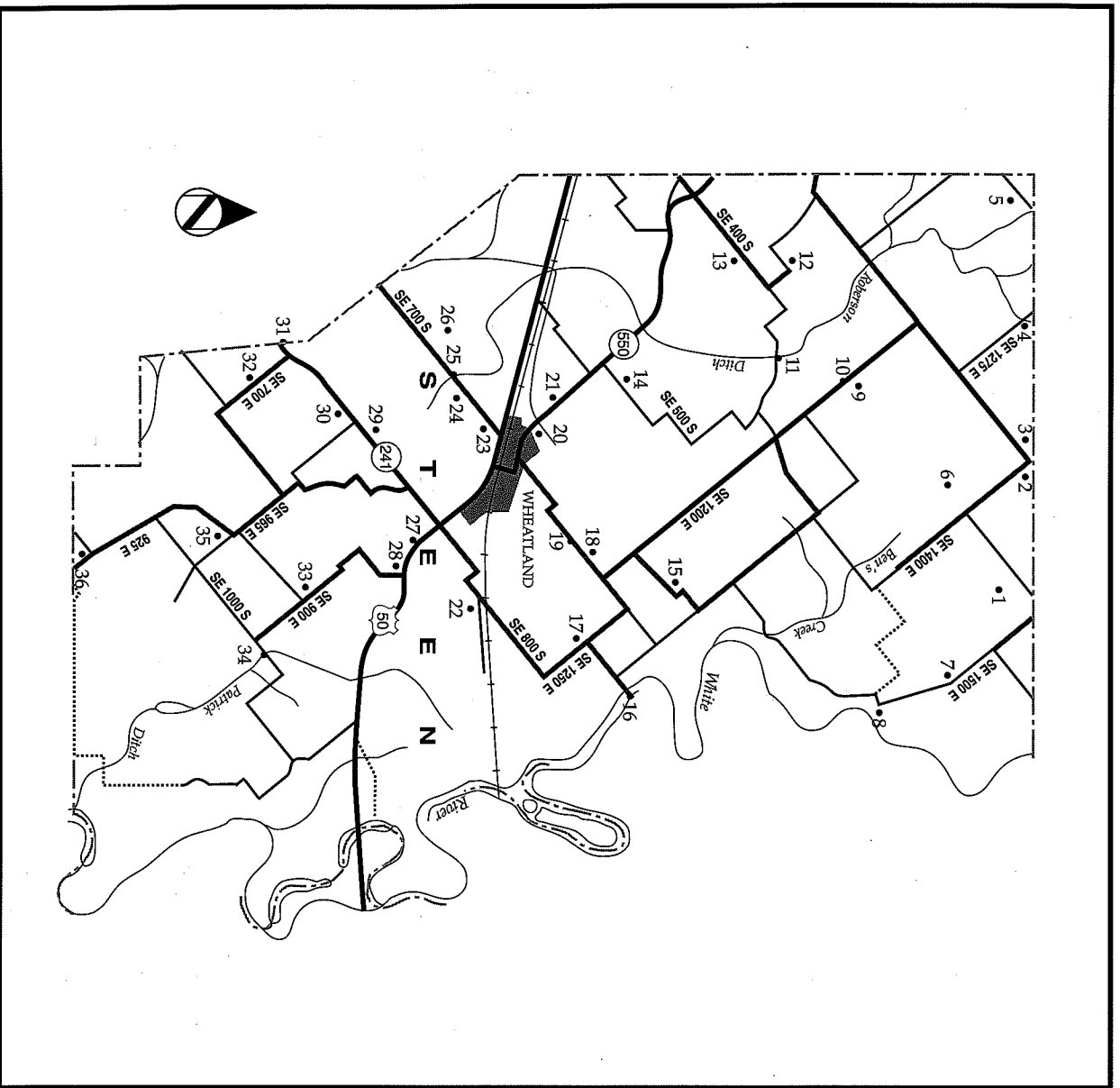


Steen Township (35001-036)



Steen Township was organized in 1851 from a section of neighboring Palmyra Township. The township was named in honor of Richard Steen, one of the area's earliest settlers who came to Knox County from South Carolina in 1806 with his family. They were followed by Andrew Berry and his wife who operated an inn along the Vincennes-Louisville Road.

Throughout its history, the township's economy has been primarily based on agriculture and coal. Most of the township is located on a seam of coal that ranges from three-and-one-half to six feet in thickness. As early as 1816, coal was collected from streambeds during low water periods and used in local blacksmith shops. During the 1830s, coal was shipped by flatboat down the Wabash and Mississippi rivers to New Orleans. Although several mines were established between 1858 and 1860, the abundance of firewood in the region did not allow coal to become a valuable commodity until sometime later.

Steen Township's strong agricultural base is reflected in a nice collection of mid- and late nineteenth century farmsteads. The Andrew Nicholson Farm (35021) includes an outstanding I-house with Greek Revival style elements as well as a large collection of ancillary buildings. Farms on SE400 S, SE500 S, and SE700 S (35013,35014,35026) illustrate the diversification of the farmstead during the late 1800s.

The only community in Steen Township is Wheatland. Laid out during the late 1850s, the town developed as a shipping point for the area's agricultural goods.

Among the township's other historic resources are a series of ditches and bridges. Four major ditches perform the vital function of draining Steen Township: Kessinger, Patrick, Roberson and Steen. They are often referred to as court ditches because of

early court mandates calling for their construction and continued maintenance. Most of the county's ditches were dug in the 1920s and 1930s, although some existed prior to that. The Kessinger Ditch extends 13.75 miles through Palmyra, Steen and Harrison townships, while the Patrick (35034), Roberson (35011) and Steen (35025) ditches run 5.4 miles, 3.83 miles and 2.37 miles respectively through the township. A triple-span Pratt through truss bridge (35016) crosses the White River, connecting Knox and Daviess counties. This outstanding structure was built by the Indiana Bridge Company in 1903 and remains in good condition.



No.	Rtg.	Description
001	C	Gilmore Cemetery , SE390 S; 1838-1899; Exploration/Settlement, Military, Religion (675)
002	C	House , SE300 S; House: Bungalow, c.1910; Outbuildings: garage, smokehouse, privy, shed; Architecture, Vernacular/Construction (675)
003	C	Farm , SE300 S; House: Bungalow, c.1890/c.1914 (Herman Wampler, builder); Outbuildings: transverse-frame barn, chicken house, sheds, privy, sheds, garage; Agriculture, Architecture, Vernacular/Construction (675)
004	C	County Bridge , 1275 E; c.1915; Engineering, Transportation (675)
005	C	House , Andy Lamb Road; Double-pen, c.1900; Vernacular/Construction (675)
006	C	Farm , SE1400 E; House: Bungalow, c.1910; Outbuilding: transverse-frame barn; Agriculture, Architecture, Vernacular/Construction (675)
007	C	House , SE1500 E; Vernacular, c.1880; Vernacular/Construction (675)
008	C	House , SE1500 E; Hall-and-parlor, c.1860; Vernacular/Construction (675)
009	C	Farm , SE1200 E; House: Colonial Revival, c.1920; Outbuildings: round-roof barn, chicken house, equipment shed; Agriculture, Architecture, Vernacular/Construction (675)
010	C	County Bridge , SE1200 E; Concrete, c.1940; Engineering, Transportation (675)
011	C	Roberson Ditch , off SE400 S; c.1920; Agriculture, Conservation, Engineering (675)
012	C	House , SE925 E; Bungalow, c.1910; Architecture (675)
013	C	Farm , SE400 S; House: double-pen, c.1900; Outbuildings: English barn, chicken houses, privy, shed; Agriculture, Vernacular/Construction (675)
014	C	Farm , SE500 S; House: cruciform, c.1900; Outbuildings: transverse-frame barn, chicken houses, sheds; Agriculture, Vernacular/Construction (675)
015	C	McKinley Cemetery , SE1200 E; 1853-1953; Exploration/Settlement, Military, Religion (675)
016	O	County Bridge No. 45 , SE750 S; Pratt through truss, 1903 (Indiana Bridge Company, builder); Engineering, Transportation (675)
017	C	Farm , SE1250 E; House: Bungalow, c.1920; Outbuilding: English barn; Agriculture, Architecture, Vernacular/Construction (675)
018	C	Farm , SE700 S; House: Bungalow, c.1920; Outbuildings: transverse-frame barn, summer kitchen, chicken house, privy, well; Agriculture, Architecture, Vernacular/Construction (675)
019	C	County Bridge , SE700 S; c.1915; Engineering, Transportation (675)
020	C	House , SR 550; Hall-and-parlor, c.1890; Vernacular/Construction (675)
021	O	Andrew Nicholson Farm , SR 550; House: I-house/Greek Revival, 1863; Outbuildings: English barn, silo, corncrib, chicken houses; Agriculture, Architecture, Vernacular/Construction (675)
022	C	House , SE800 S; Hall-and-parlor, c.1890; Vernacular/Construction (675)
023	N	Simon A. Nicholson House , SE700 S; I-house/Greek Revival, c.1855; Architecture, Vernacular/Construction (675)
024	C	House , SE700 S; Pyramidal-roof, c.1915; Vernacular/Construction (675)
025	C	Steen Ditch , SE700 S; c.1925; Agriculture, Conservation, Engineering (675)