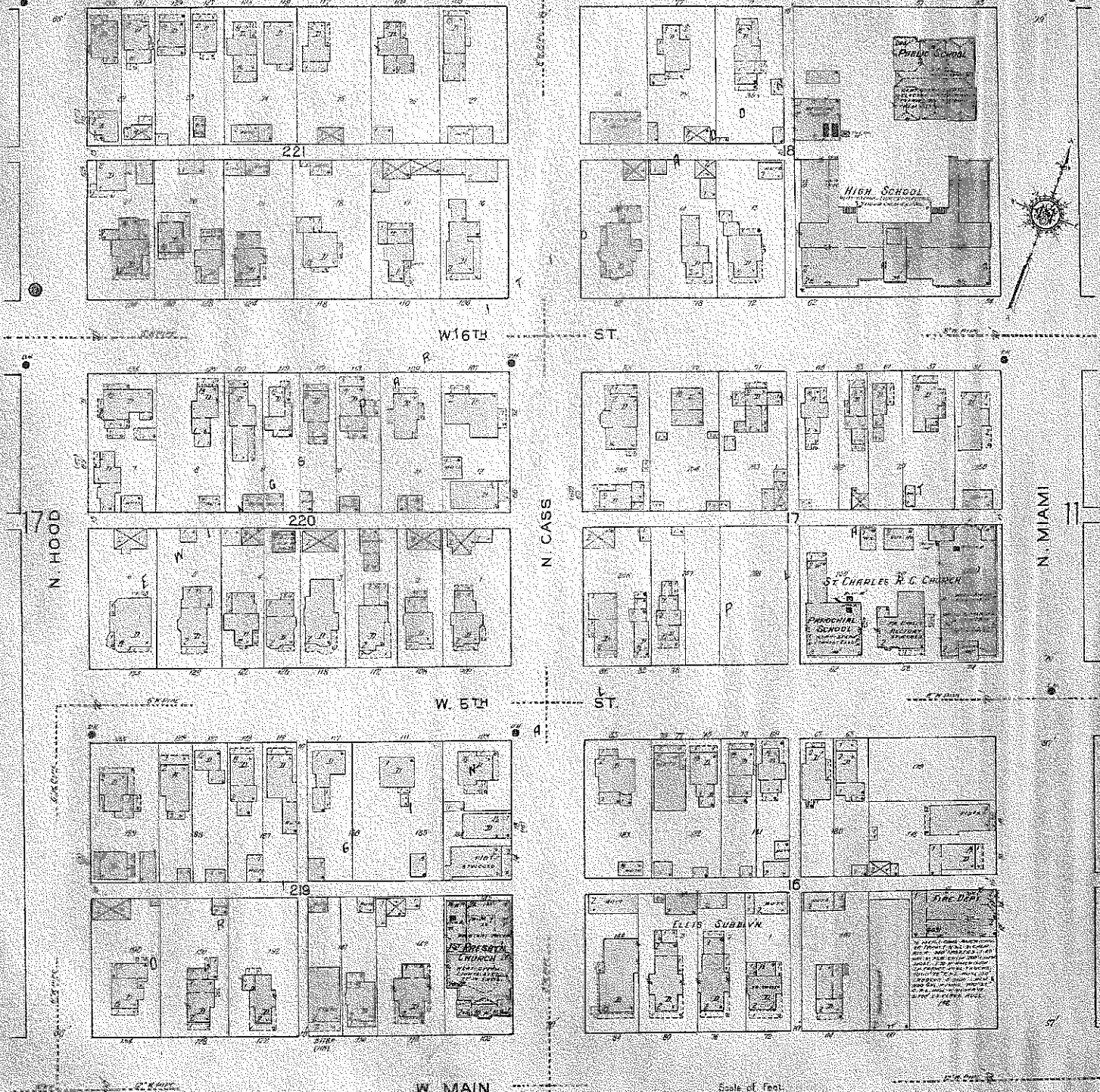


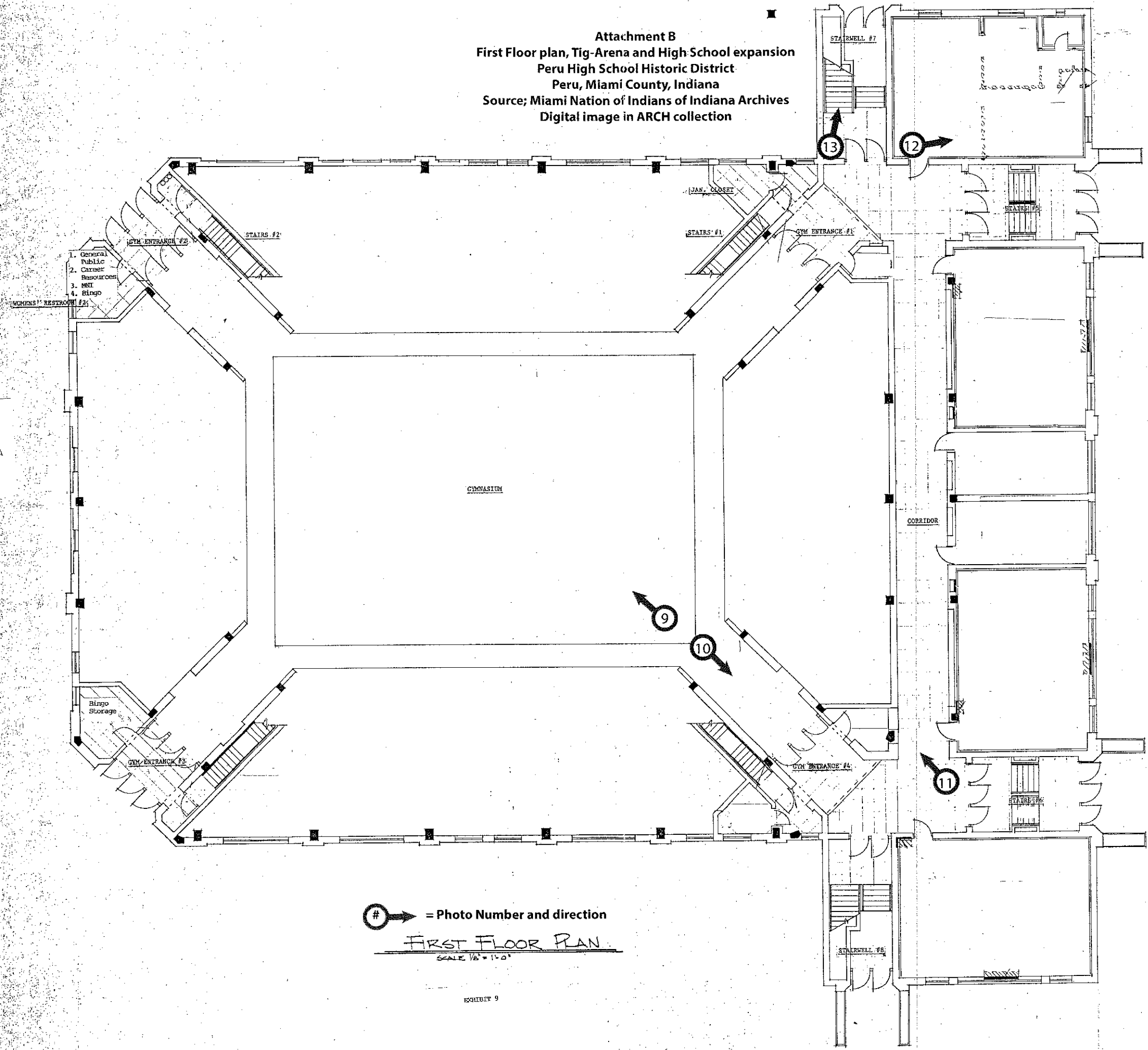
Peru High School Historic District

Peru, Miami County, Indiana

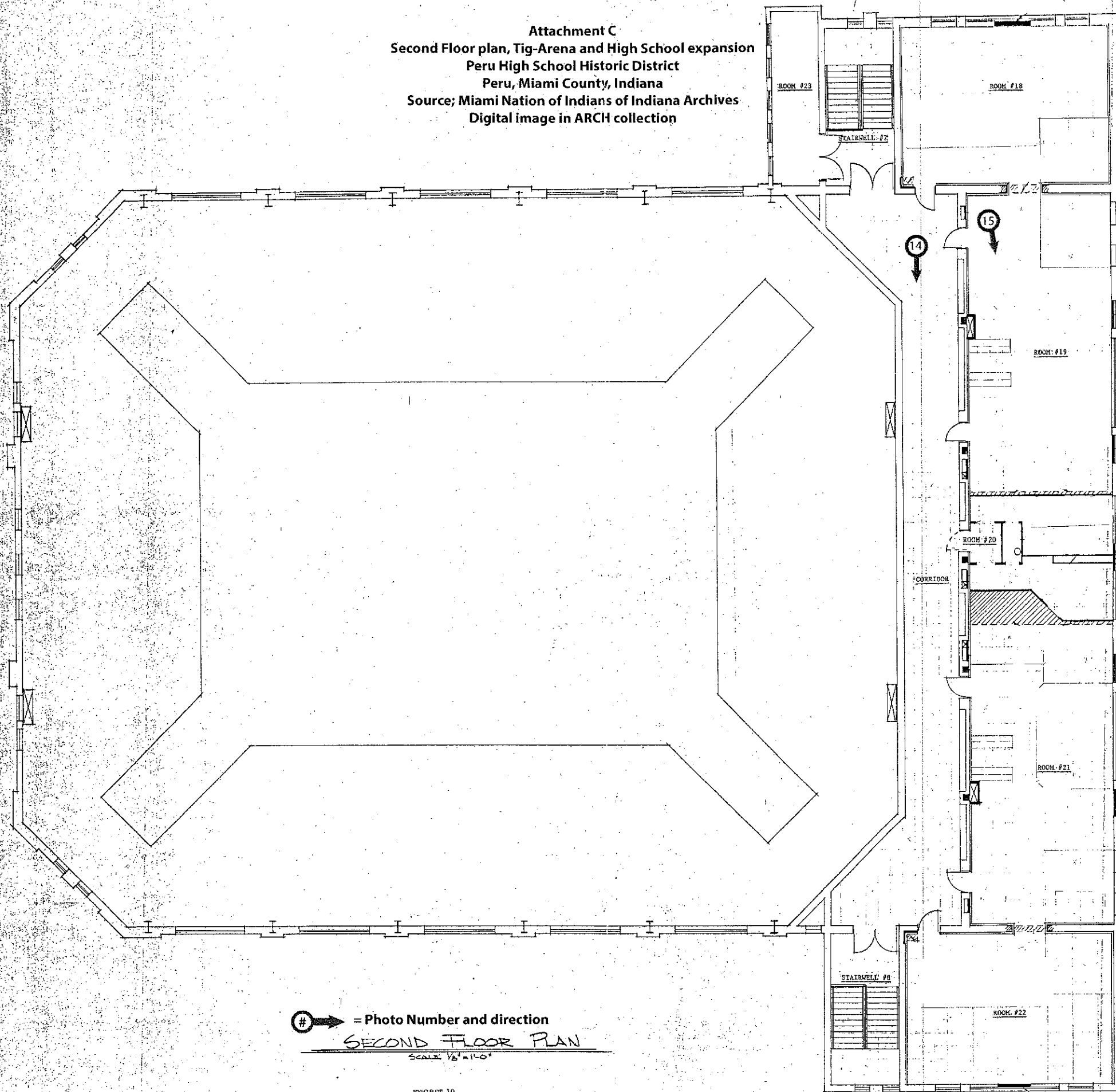
Source; <http://www.indiana.edu/~gisdata/sanborn.html>



Attachment B
 First Floor plan, Tig-Arena and High School expansion
 Peru High School Historic District
 Peru, Miami County, Indiana
 Source; Miami Nation of Indians of Indiana Archives
 Digital image in ARCH collection

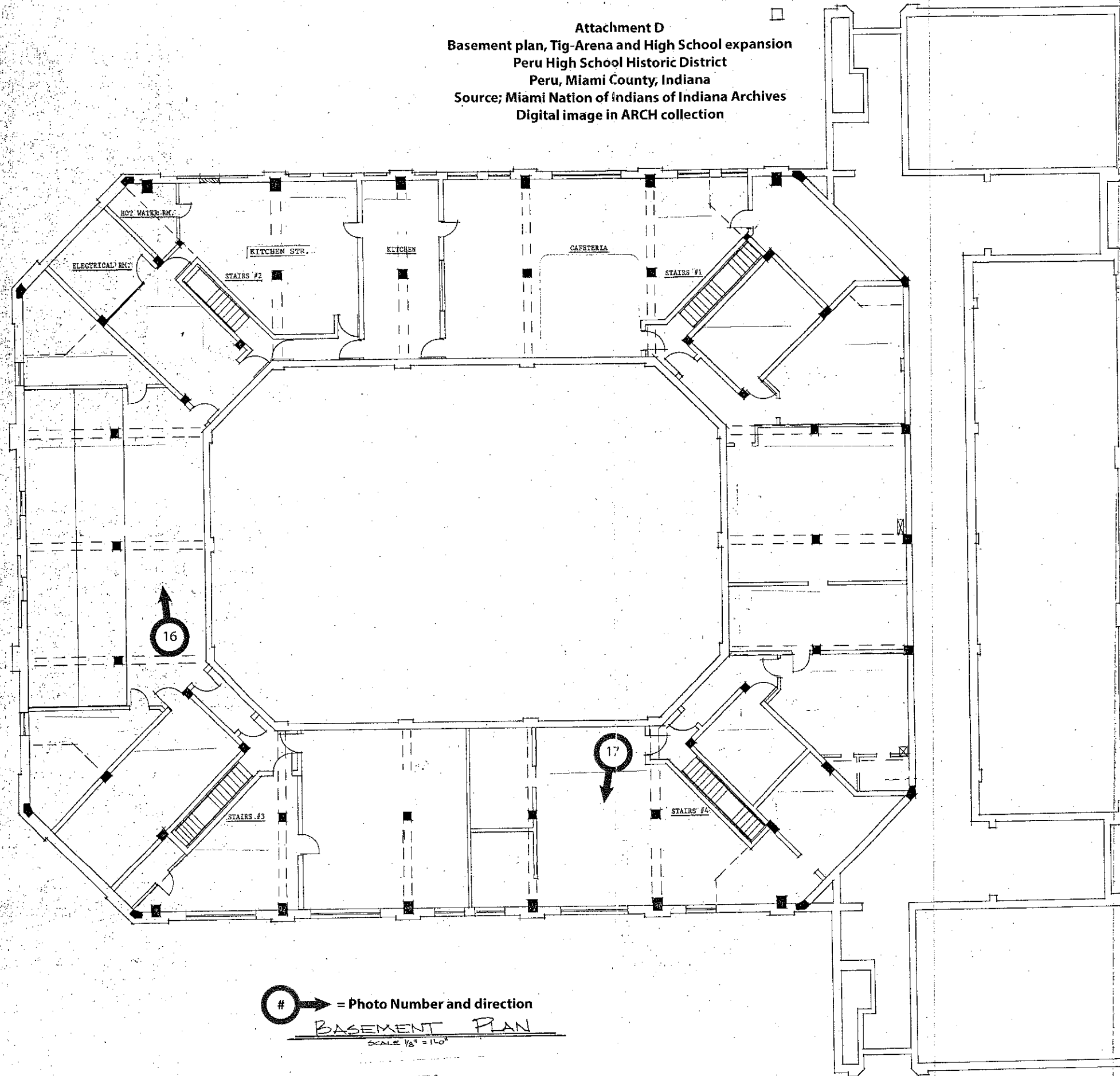


Attachment C
Second Floor plan, Tig-Arena and High School expansion
Peru High School Historic District
Peru, Miami County, Indiana
Source; Miami Nation of Indians of Indiana Archives
Digital image in ARCH collection

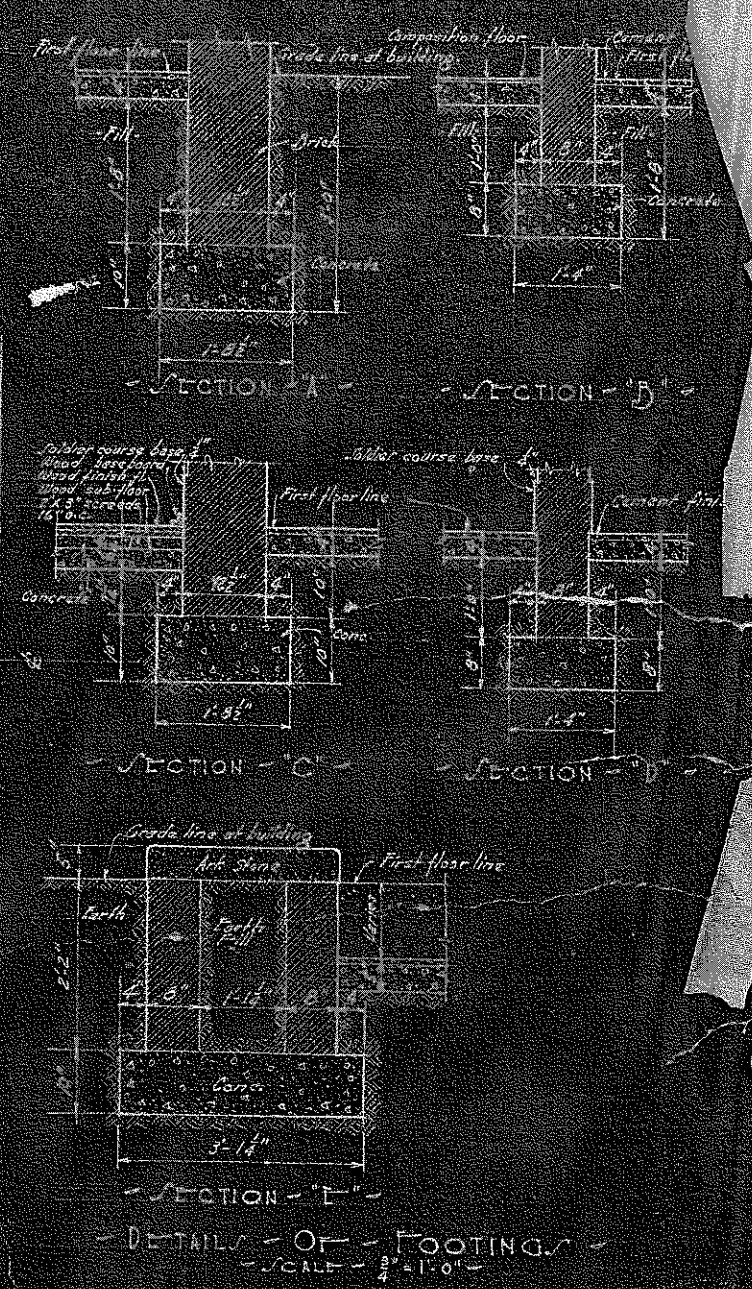
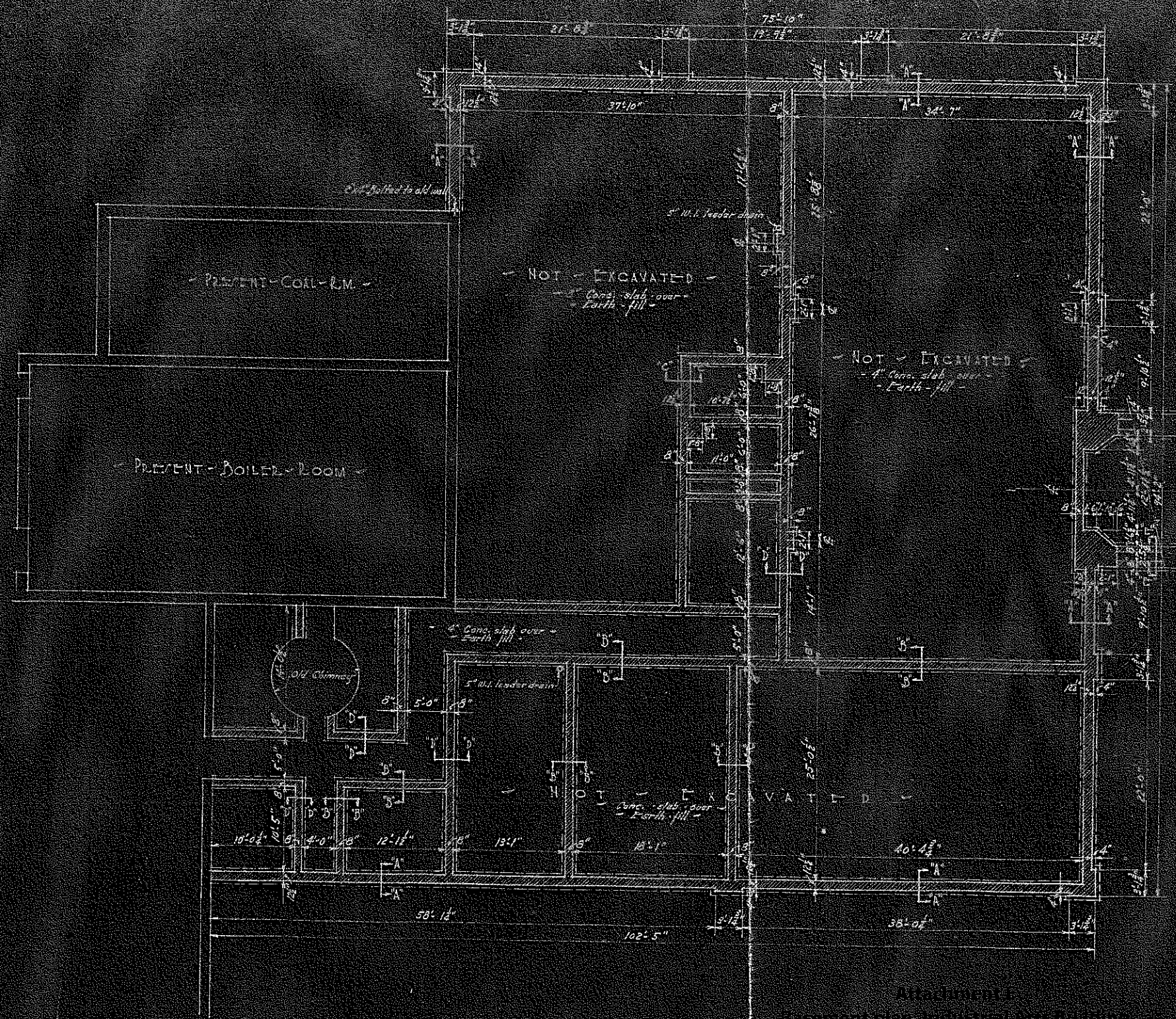


① → = Photo Number and direction
SECOND FLOOR PLAN
SCALE 1/8" = 1'-0"

Attachment D
Basement plan, Tig-Arena and High School expansion
Peru High School Historic District
Peru, Miami County, Indiana
Source; Miami Nation of Indians of Indiana Archives
Digital image in ARCH collection



→ = Photo Number and direction
BASEMENT PLAN
SCALE 1/8" = 1'-0"

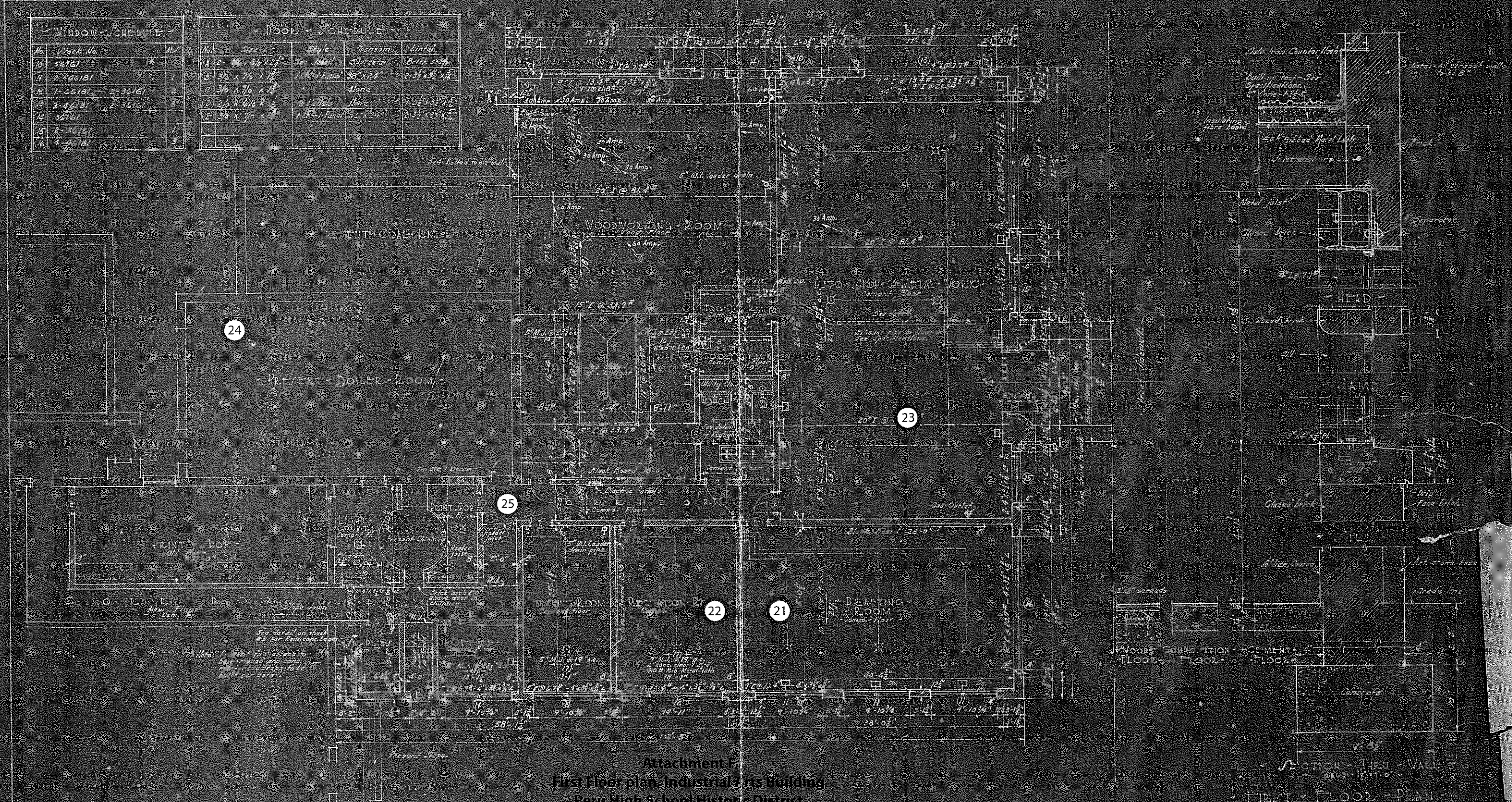


Attachment
 Foundation Plan Industrial Arts Building
 Peru High School, Peru, Indiana
 Peru, Miami County, Indiana
 Source: Miami Nation of Indiana, Columbus, Indiana
 Digital image by OHN Collection

FOUNDATION PLAN
 One Eightieth Inch Equals One Foot
 MATERIALS: PLAN OF THE INDUSTRIAL TRAINING SCHOOL
 BOARD OF EDUCATION
 PERU - INDIANA
 OSCAR F. COOK
 ARCHITECT
 KOKOMO INDIANA
 SHEET No. 1
 ONE No. 308
 DATE 7/28/25

WINDOW SCHEDULE		
No.	Stock No.	Qty.
10	54161	1
11	2-46181	2
12	1-66181 - 2-36161	3
13	2-46181 - 2-36161	4
14	36161	1
15	2-36161	2
16	4-46181	4

DOOR SCHEDULE				
No.	Size	Style	Finish	Label
1	2-4 1/2 x 7 1/2	6 Panel	3/4" detail	Blank arch
2	3 1/2 x 7 1/2	6 Panel	None	None
3	2 1/2 x 6 1/2	6 Panel	None	1-3/4" x 1 1/2"
4	6 3/4 x 7 1/2	1-1/2" Panel	3/4" x 1 1/2"	2-3/4" x 3 1/2"

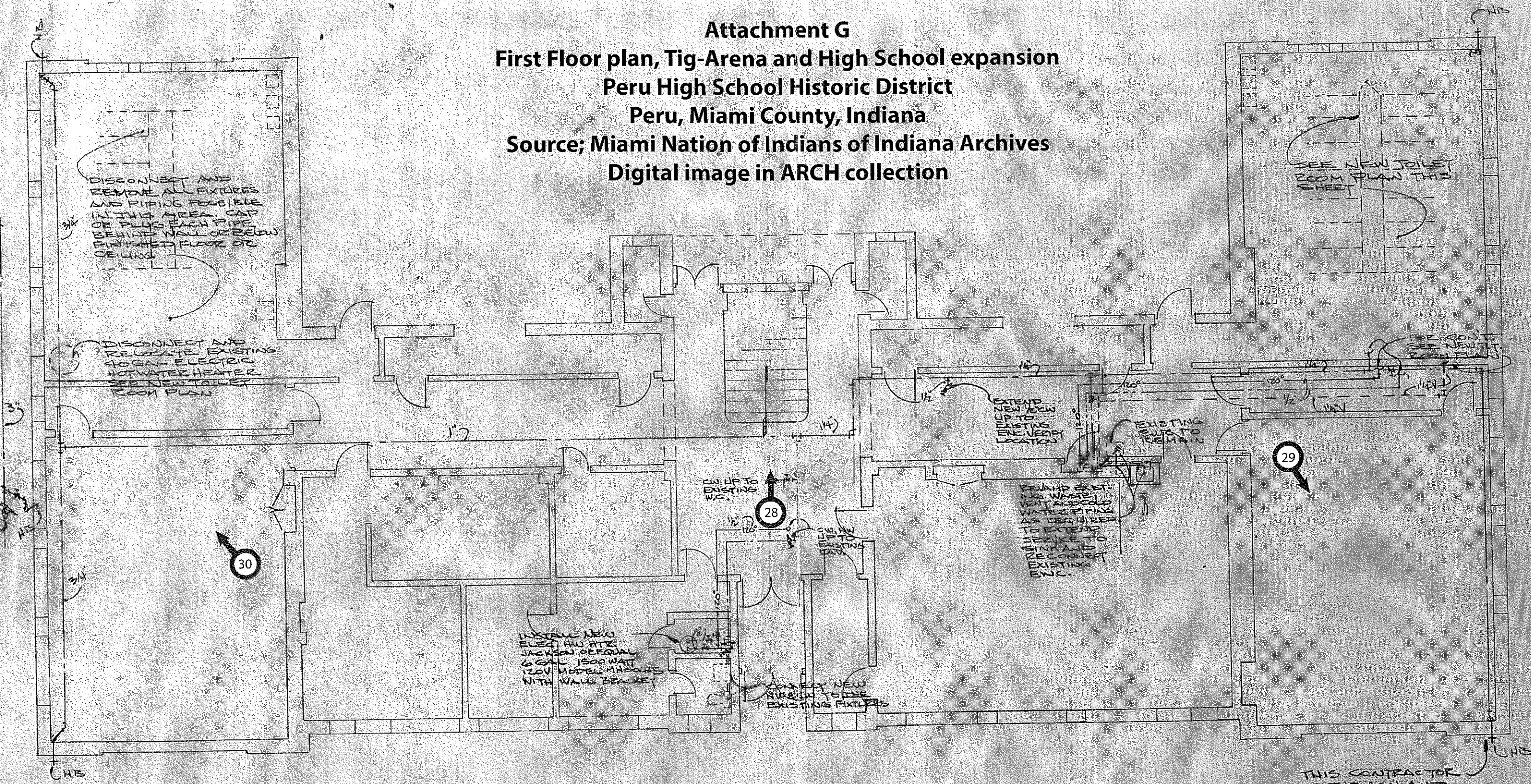


Attachment F
 First Floor plan, Industrial Arts Building
 Peru High School Historic District
 Peru, Miami County, Indiana
 Source: Miami Nation of Indians of Indiana Archives
 Digital image in ARCH collection

Photo Number and direction

MATERIAL	PLAN	THE BOARD OF EDUCATION	SHEET
Brick	INDUSTRIAL ARTS BUILDING	PERU, INDIANA	2
1/2" concrete			
4" wall			

Attachment G
First Floor plan, Tig-Arena and High School expansion
Peru High School Historic District
Peru, Miami County, Indiana
Source; Miami Nation of Indians of Indiana Archives
Digital image in ARCH collection



→ = Photo Number and direction

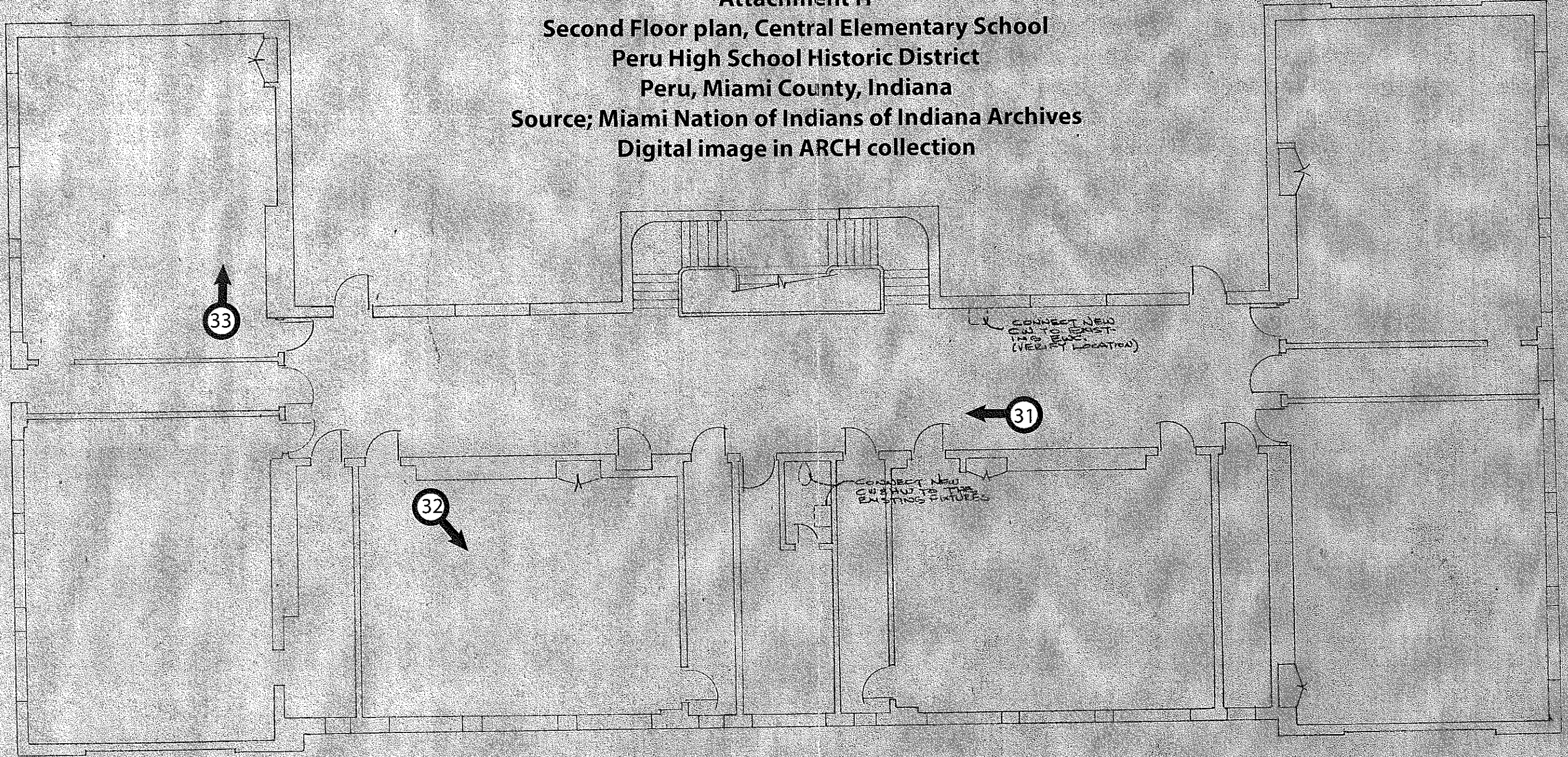
FIRST FLOOR PLUMBING PLAN

SCALE 1/8" = 1' 0"



THIS CONTRACTOR
 TO FURNISH AND
 INSTALL (4) FOUR
 NEW 3/4" HD WOODFORD
 MODEL 70 FINISHED
 BRASS (TYPICAL)

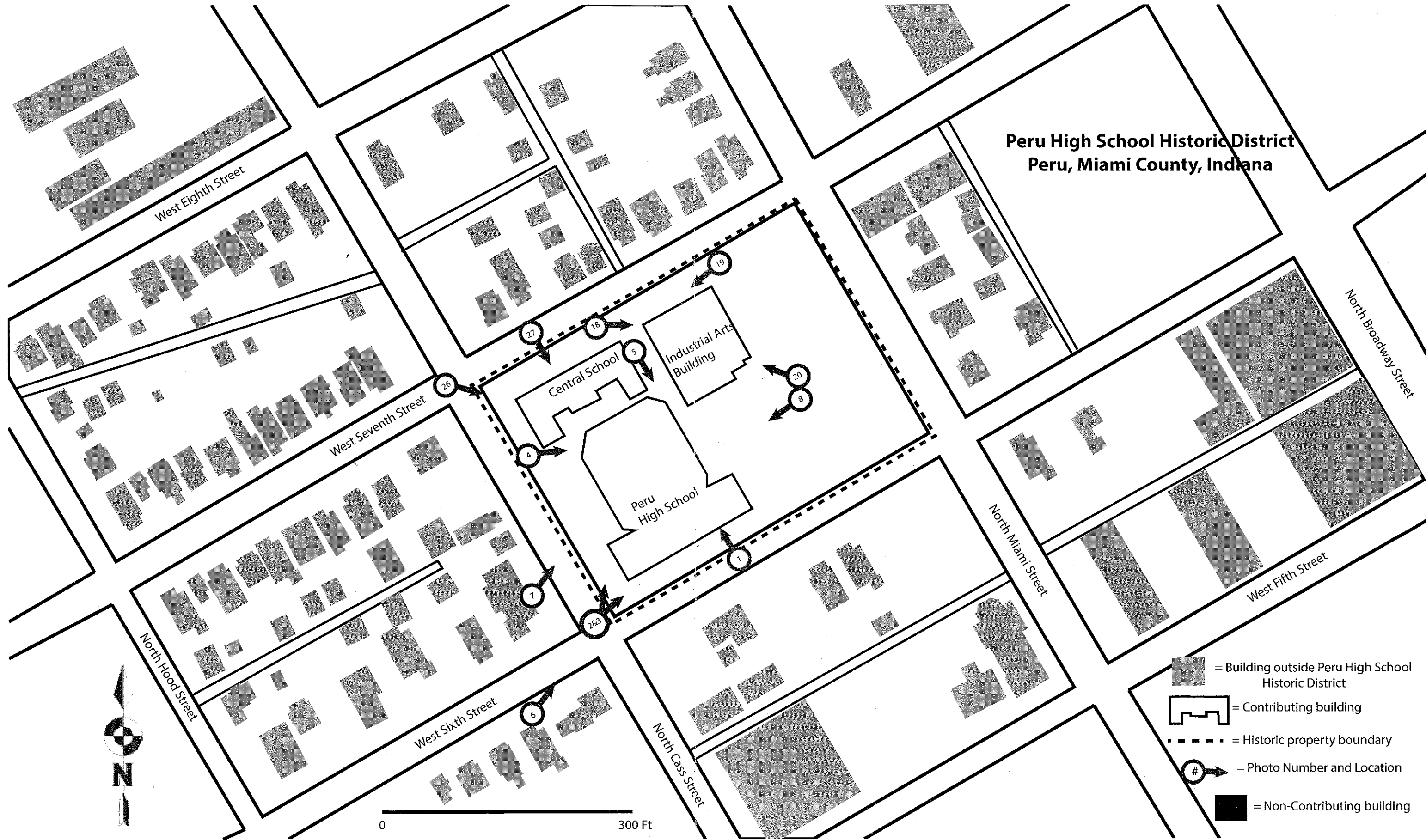
Attachment H
Second Floor plan, Central Elementary School
Peru High School Historic District
Peru, Miami County, Indiana
Source; Miami Nation of Indians of Indiana Archives
Digital image in ARCH collection








→ = Photo Number and direction

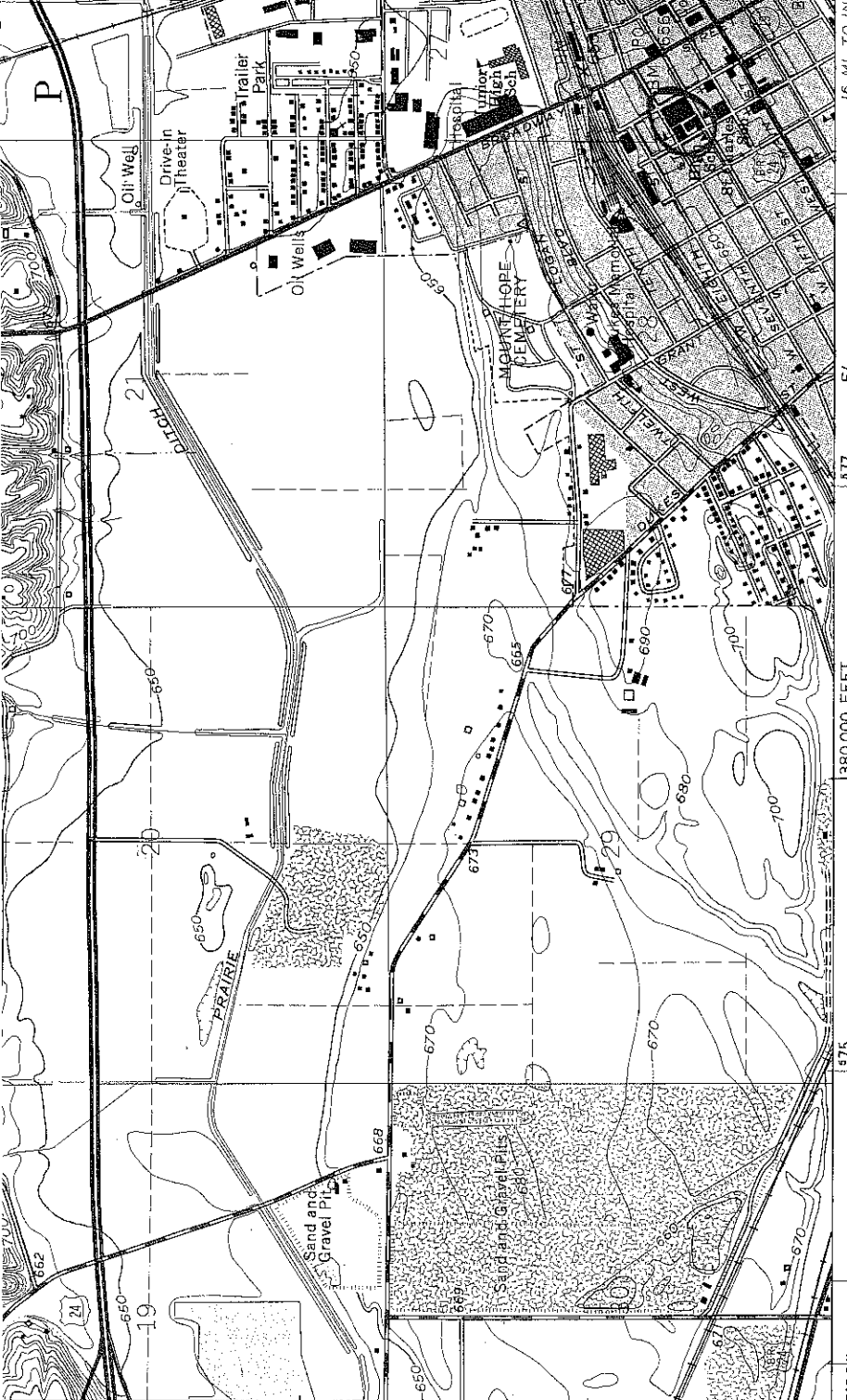
SECOND FLOOR PLUMBING PLAN
SCALE 1/8" = 1'-0"

**Peru High School Historic District
Peru, Miami County, Indiana**



0 300 Ft

-  = Building outside Peru High School Historic District
-  = Contributing building
-  = Historic property boundary
-  = Photo Number and Location
-  = Non-Contributing building



4514
 0.4 MI. TO U.S. 31
 150,000 FEET
 PERU HIGH SCHOOL
 HISTORIC DISTRICT
 PERU, MIAMI COUNTY
 INDIANA
 ROAD 83
 UTM REFERENCE
 16/578248/4511939

Mapped, edited, and published by the Geological Survey

Control by USGS, NOS/NOAA, and USCE

Planimetry by photogrammetric methods from aerial photographs taken 1948. Topography by planetable surveys 1949. Revised 1960

Polyconic projection. 10,000-foot grid based on

Indiana coordinate system, east zone

1000-meter Universal Transverse Mercator grid ticks,

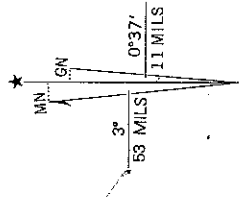
zone 16, shown in blue. 1927 North American Datum

No adjustment is necessary to place this map on the

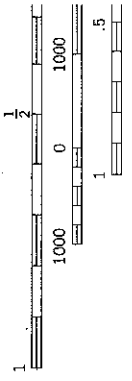
predicted North American Datum 1983

Fine red dashed lines indicate selected fence and field lines where generally visible on aerial photographs. This information is unchecked

Red tint indicates areas in which only landmark buildings are shown



UTM GRID AND 1992 MAGNETIC NORTH DECLINATION AT CENTER OF SHEET



16 MI. TO INCL
 NATIONAL COI

THIS MAP COMPILED FOR SALE BY U.S. GEOLOGICAL SURVEY AND INDIANA DEPARTMENT OF GEOLOGY A FOLDER DESCRIBING TOPOGRAPHY



50'