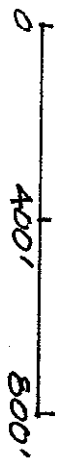


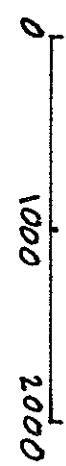
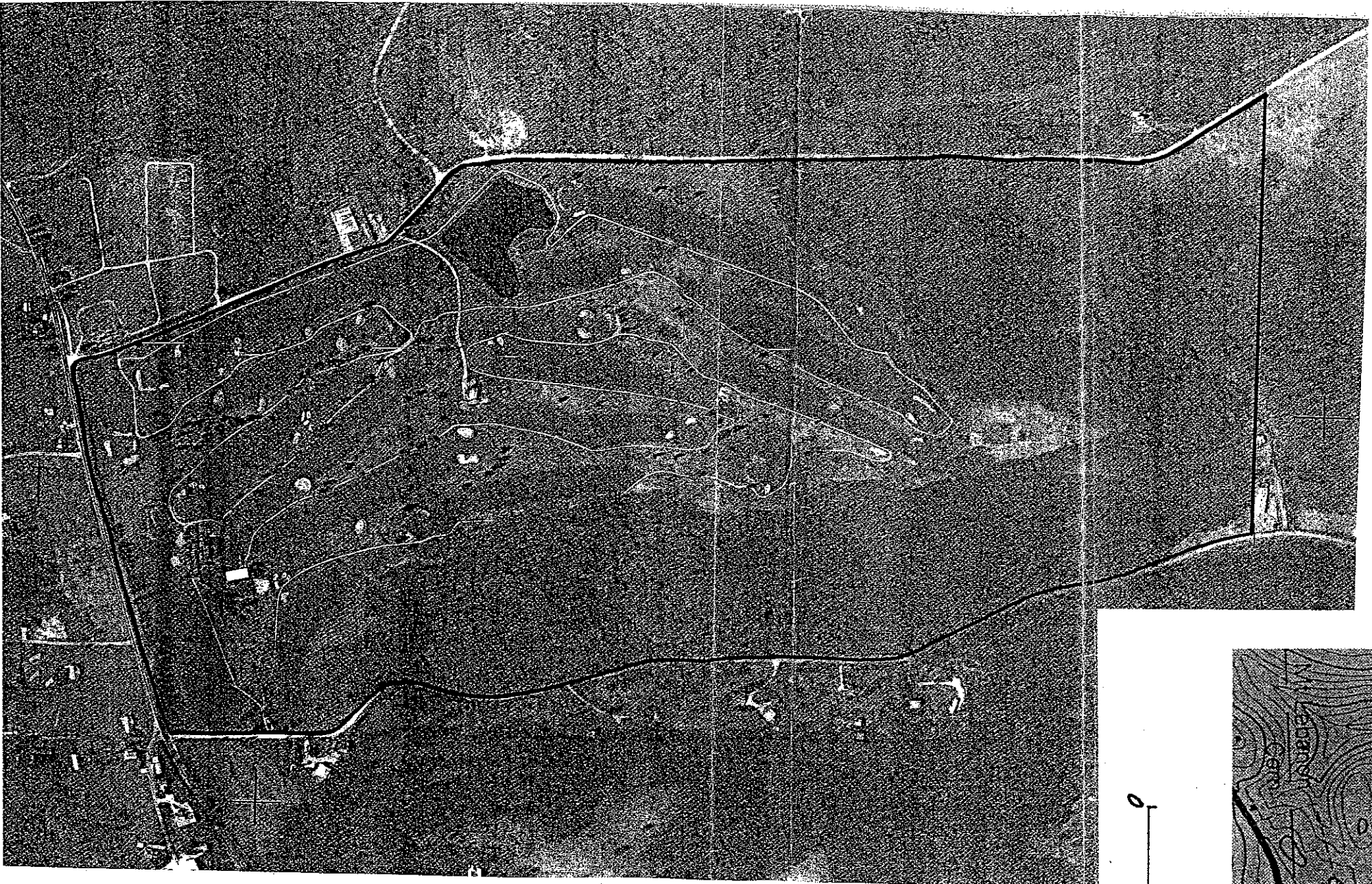
**MAP II-A**  
**SITE II. HILL GOLF COURSE**  
**French Lick Springs Hotel**  
**French Lick (Orange County) IN**

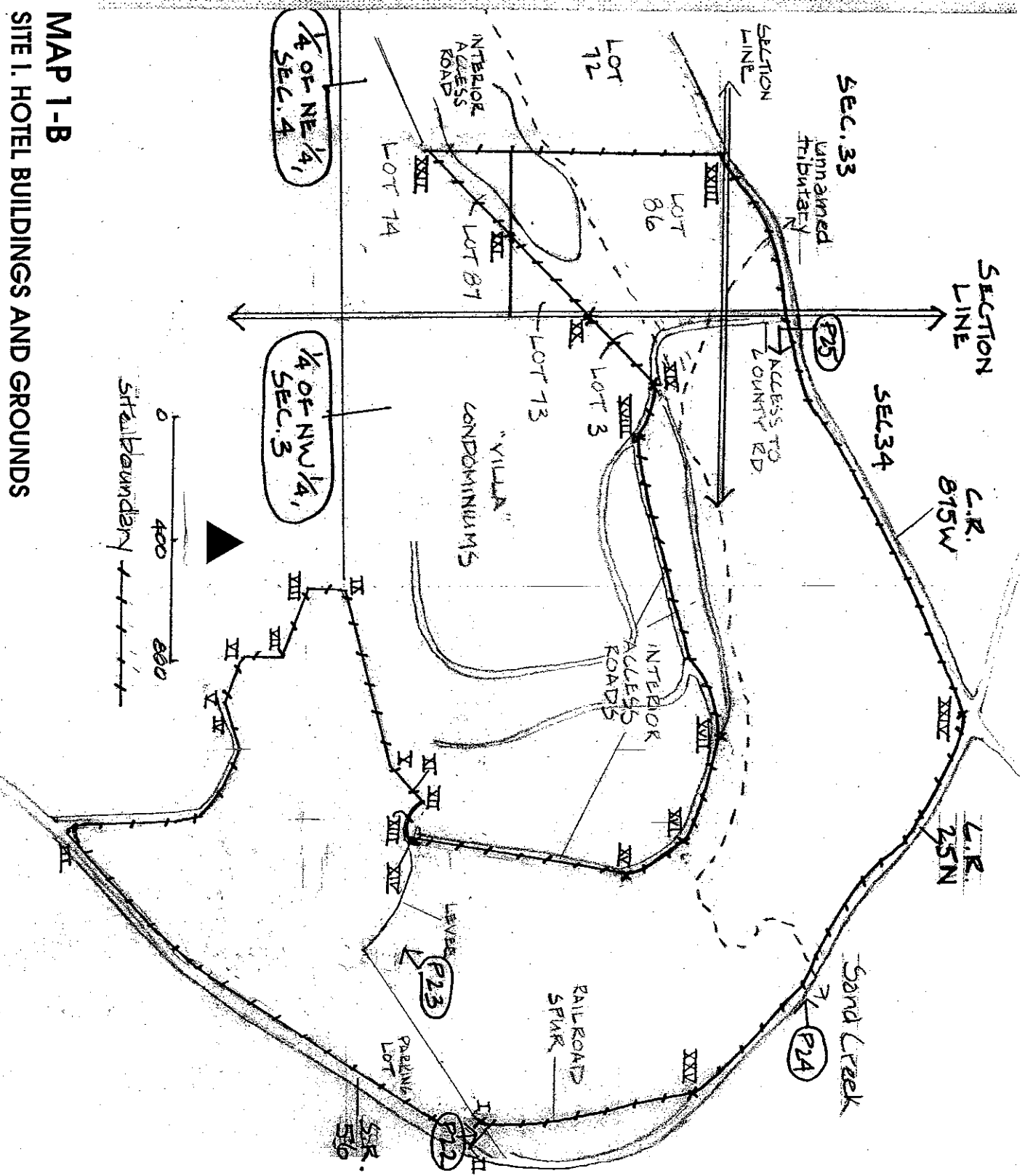
**Overview of Features, Terrain, and Setting**

Map detail from USGS quadrant: French Lick, IN;  
air photo detail: Orange County IN, sheet 01-06  
(both 1993).



Site I approximate boundary —————

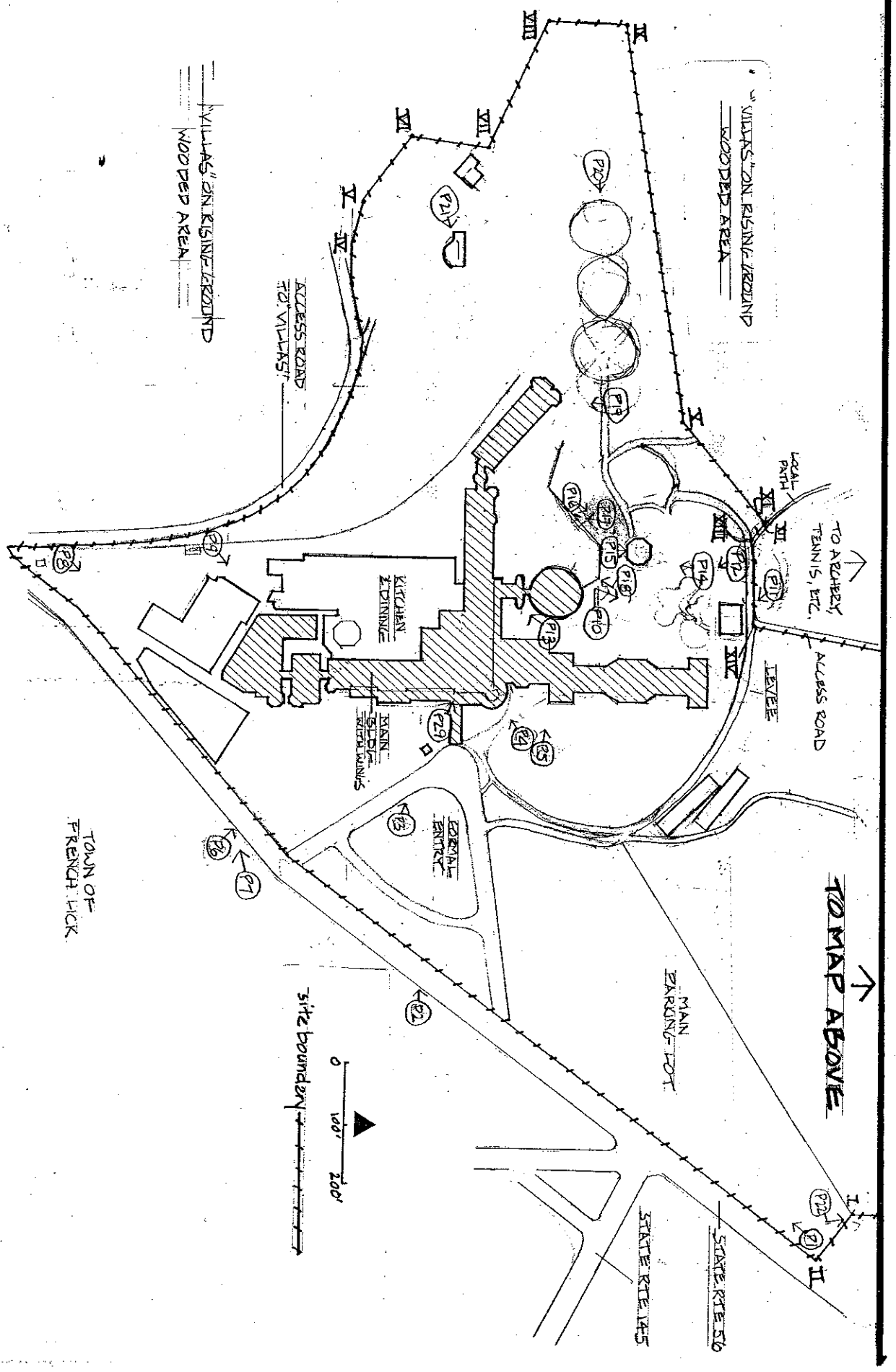




**MAP 1-B**  
**SITE I. HOTEL BUILDINGS AND GROUNDS**  
**French Lick Springs Hotel**  
**French Lick (Orange County) IN**

**Boundary Features and Exterior Photo Positions**

Refer to text, Sec. 10 of nomination document, for verbal boundary description keyed to map.

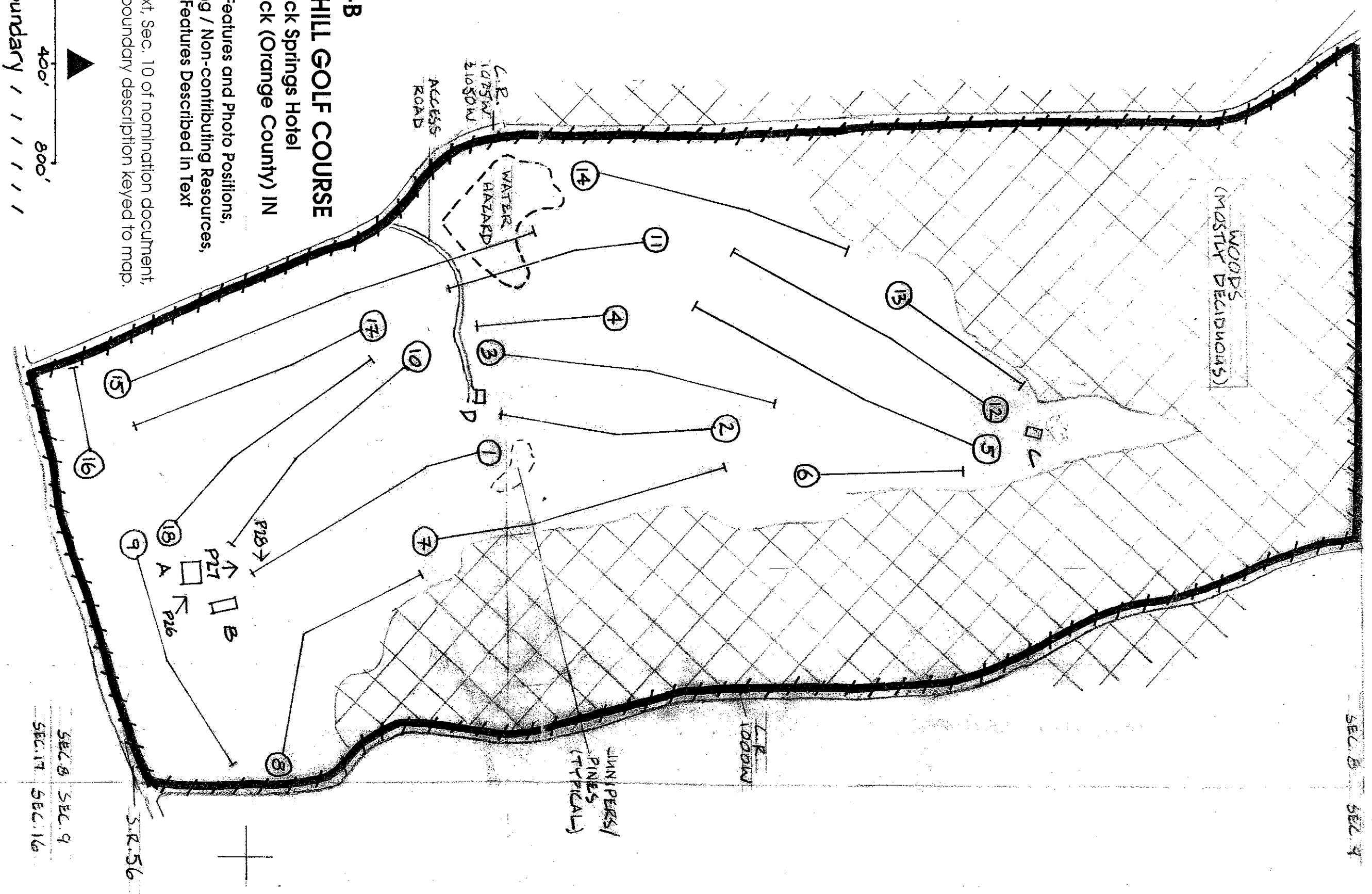


Villa's on Rising Zebund  
 WOODED AREA

0 100' 200'  
 site boundary

↑  
 TO MAP ABOVE

SEC. 8 SEC. 9



**MAP II-B**  
**SITE II. HILL GOLF COURSE**  
 French Lick Springs Hotel  
 French Lick (Orange County) IN

Boundary Features and Photo Positions,  
 Contributing / Non-contributing Resources,  
 and Minor Features Described in Text

Refer to text, Sec. 10 of nomination document,  
 for verbal boundary description keyed to map.

Light solid line = approximate direction of play  
 from tee along fairway to green for each hole  
 Circled area = green  
 Number in circle = number of hole

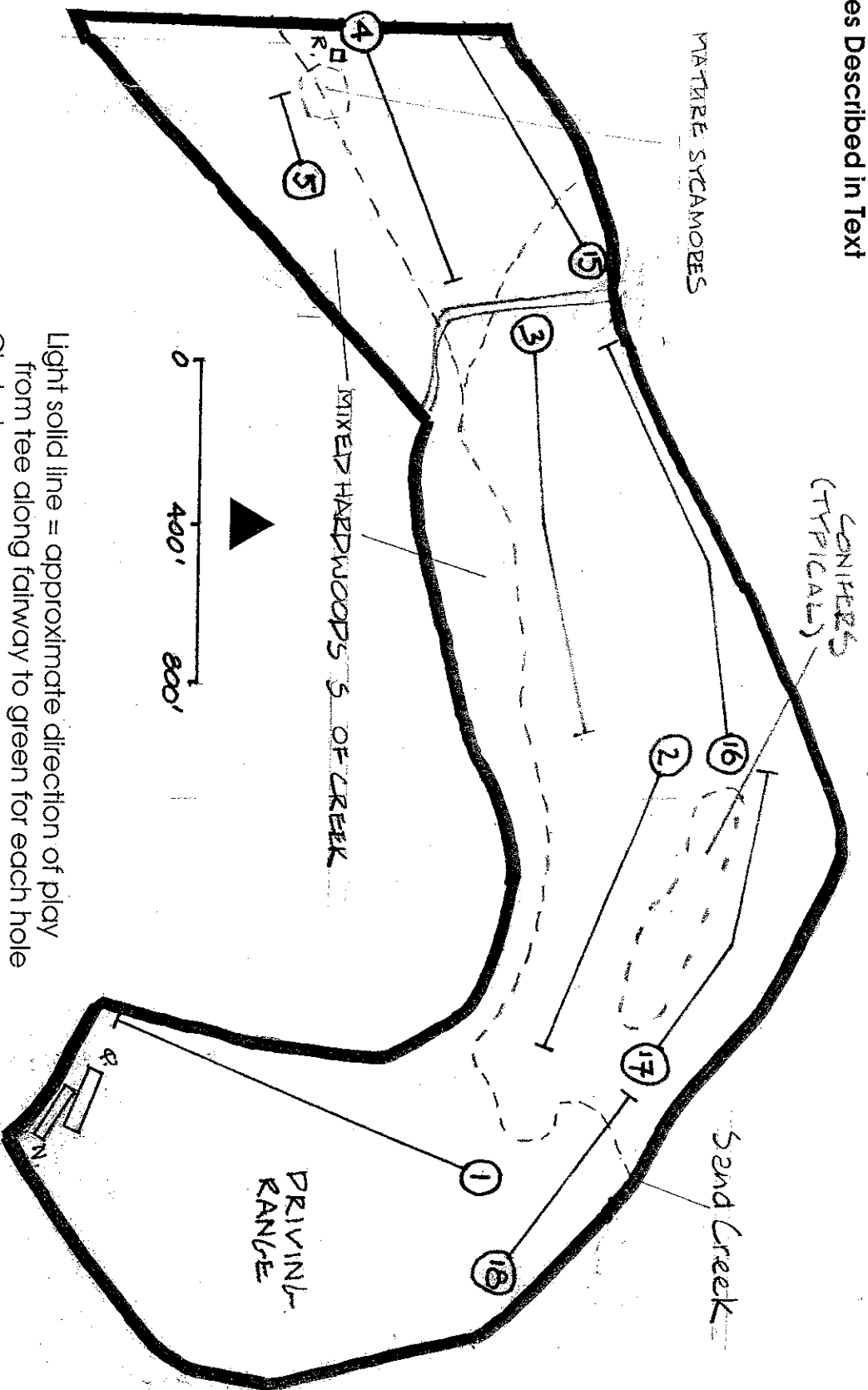
**INDIVIDUALLY COUNTED RESOURCES**

- Contributing (2)  
 A = Hill club house  
 (the bounded area is individually counted as a site)
- Non-contributing (3)  
 B = cart barn  
 C = shelter/concession stand  
 D = maintenance shed

# MAP I-C

## SITE I. HOTEL BUILDINGS AND GROUNDS French Lick Springs Hotel French Lick (Orange County) IN

Contributing / Non-contributing Resources  
and Minor Features Described in Text



Light solid line = approximate direction of play  
from tee along fairway to green for each hole  
Circled area = green  
Number in circle = number of hole

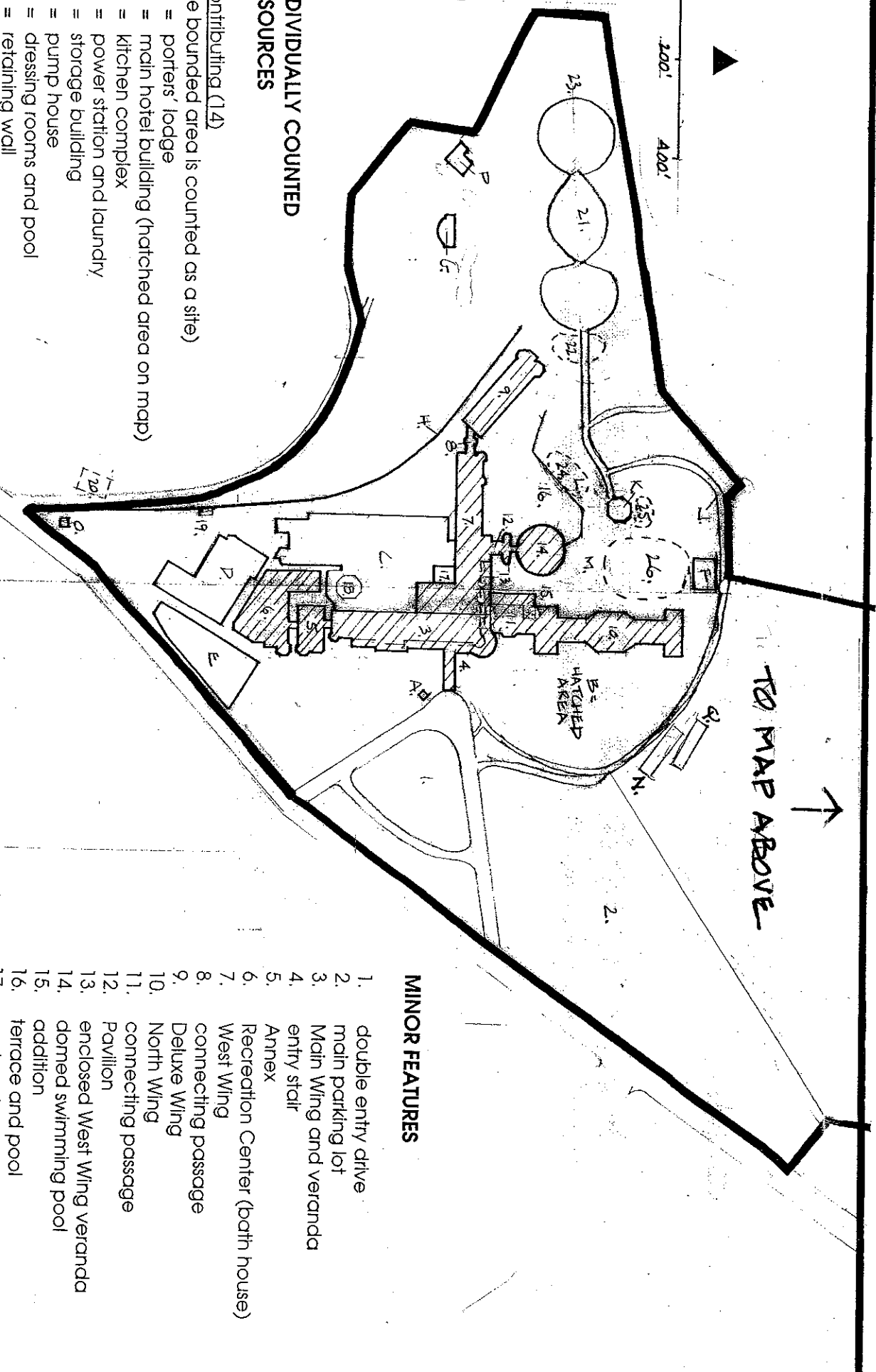
### INDIVIDUALLY COUNTED RESOURCES

Contributing (14)  
(the bounded area is counted as a site)

- A = porters' lodge
- B = main hotel building (hatched area on map)
- C = kitchen complex
- D = power station and laundry
- E = storage building
- F = pump house
- G = dressing rooms and pool
- H = retaining wall
- J = flood control levee
- K = Pluto Spring House
- L = rustic limestone seat
- M = commemorative boulder
- N = Valley club house

### Non-contributing (4)

- O = guard's kiosk
- P = former playhouse
- Q = Valley cart barn
- R = concession stand



### MINOR FEATURES

1. double entry drive
2. main parking lot
3. Main Wing and veranda
4. entry stair
5. Annex
6. Recreation Center (both house)
7. West Wing
8. connecting passage
9. Deluxe Wing
10. North Wing
11. connecting passage
12. Pavillion
13. enclosed West Wing veranda
14. domed swimming pool
15. addition
16. terrace and pool
17. enclosed garden
18. roof of former dining pavillion
19. roof cellar
20. site of Taggart cottage
21. formal garden
22. conifers and flowering trees
23. viewing bench
24. Fresh Water Spring garden
25. baldcypress trees
26. Japanese garden

**MAP I-D**  
**SITE I. HOTEL BUILDINGS AND GROUNDS**  
**French Lick Springs Hotel**  
**French Lick (Orange County) IN**

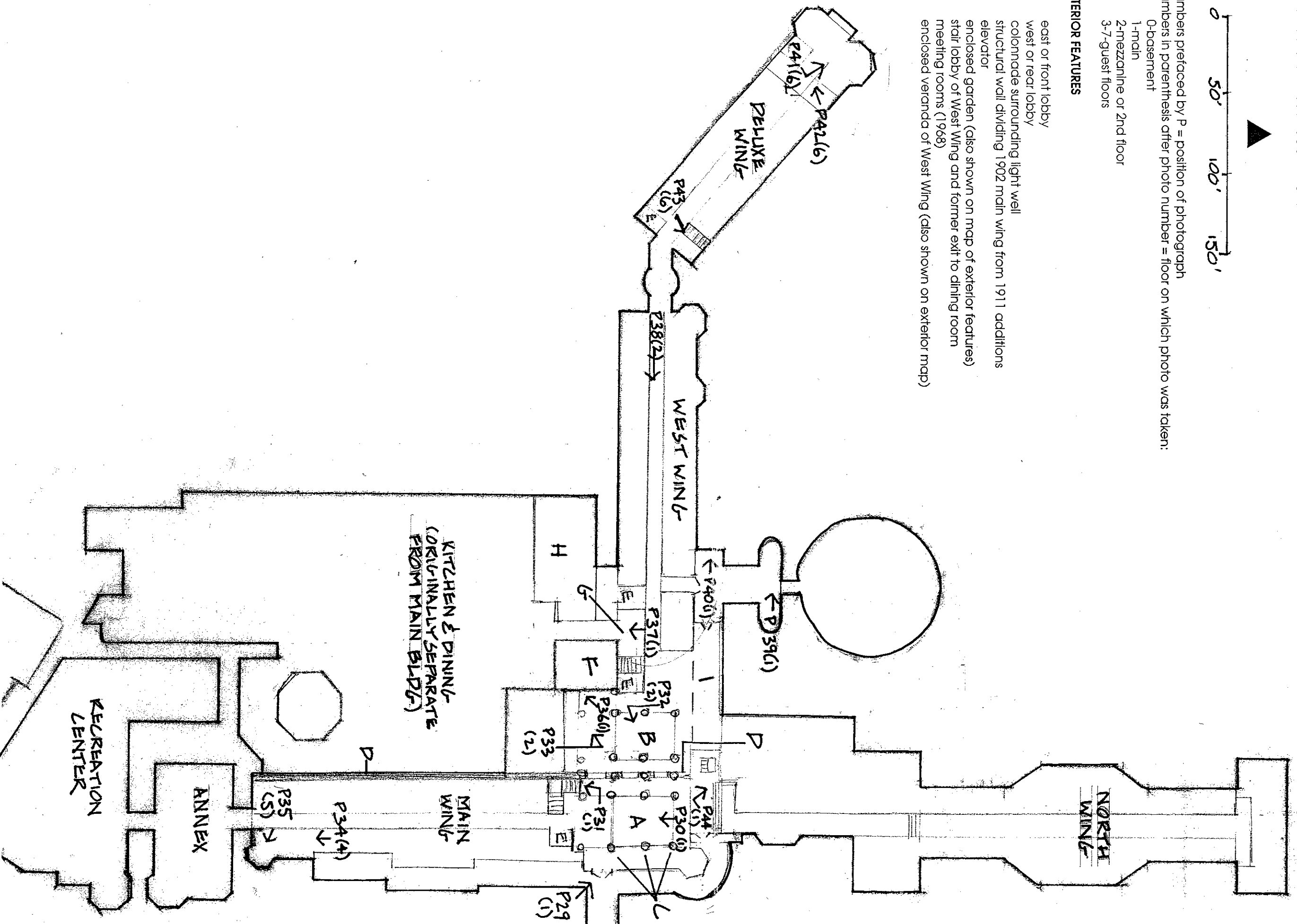
Interior Photo Positions  
 and Features Described in Text

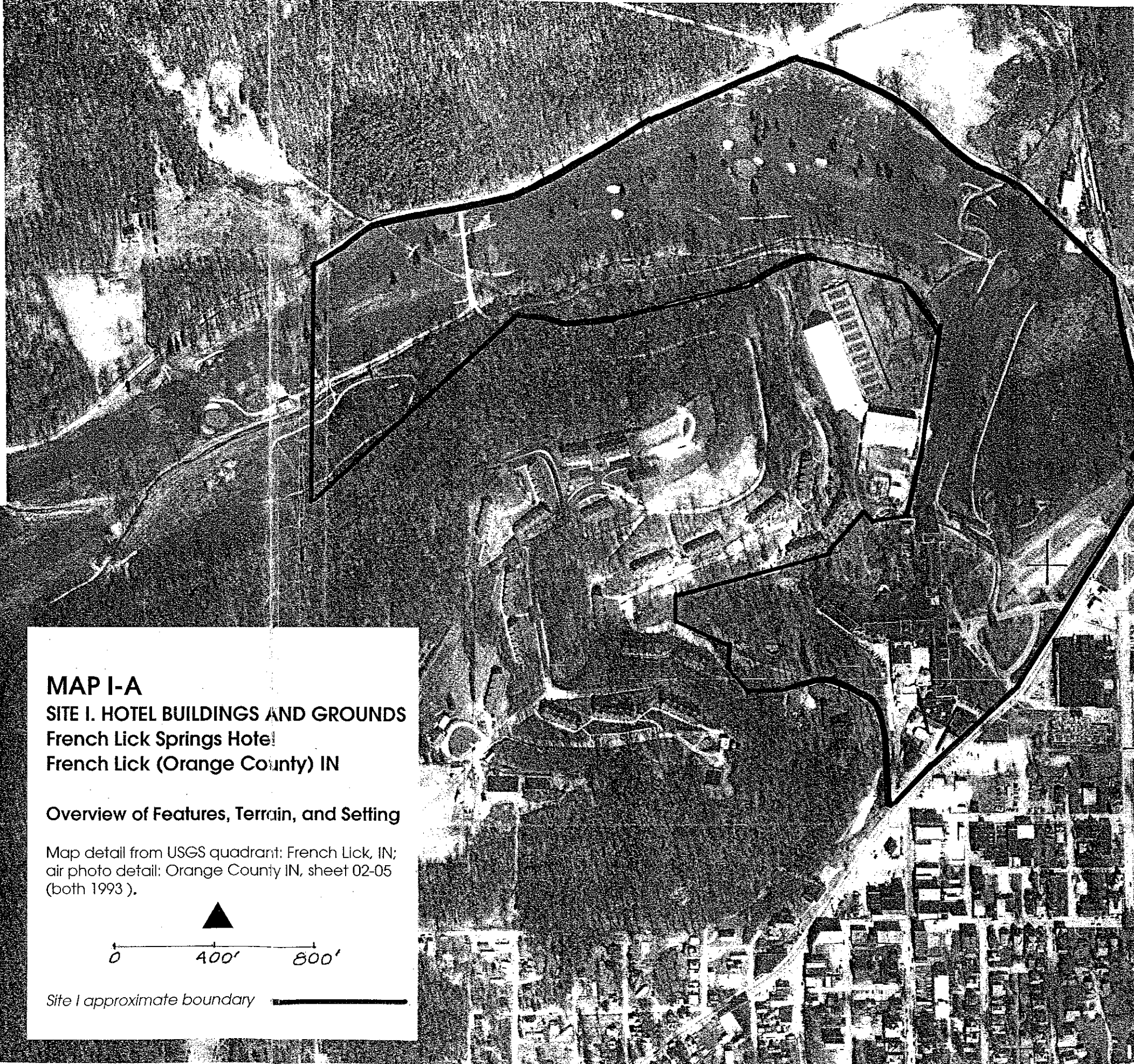
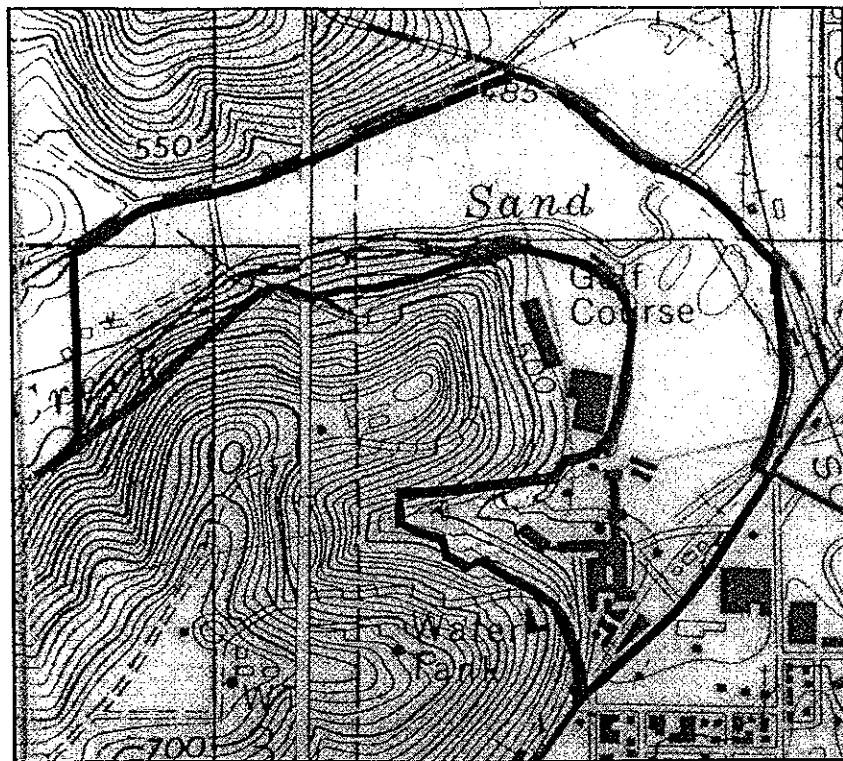


numbers prefaced by P = position of photograph  
 numbers in parenthesis after photo number = floor on which photo was taken:  
 0-basement  
 1-main  
 2-mezzanine or 2nd floor  
 3-7-guest floors

**INTERIOR FEATURES**

- A. east or front lobby
- B. west or rear lobby
- C. colonnade surrounding light well
- D. structural wall dividing 1902 main wing from 1911 additions
- E. elevator
- F. enclosed garden (also shown on map of exterior features)
- G. stair lobby of West Wing and former exit to dining room
- H. meeting rooms (1968)
- I. enclosed veranda of West Wing (also shown on exterior map)

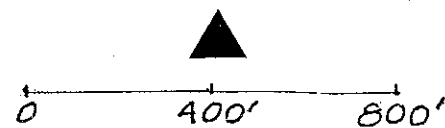




**MAP I-A**  
**SITE I. HOTEL BUILDINGS AND GROUNDS**  
**French Lick Springs Hotel**  
**French Lick (Orange County) IN**

**Overview of Features, Terrain, and Setting**

Map detail from USGS quadrant: French Lick, IN;  
 air photo detail: Orange County IN, sheet 02-05  
 (both 1993).



*Site I approximate boundary* 