

United States Department of the Interior
National Park Service

National Register of Historic Places
Registration Form

This form is for use in nominating or requesting determinations of eligibility for individual properties or districts. See instructions in *Guidelines for Completing National Register Forms* (National Register Bulletin 16). Complete each item by marking "x" in the appropriate box or by entering the requested information. If an item does not apply to the property being documented, enter "N/A" for "not applicable." For functions, styles, materials, and areas of significance, enter only the categories and subcategories listed in the instructions. For additional space use continuation sheets (Form 10-900a). Type all entries.

1. Name of Property

historic name New Castle Commercial Historic District
other names/site number _____

2. Location

street & number Roughly bounded by Fleming and 11th St.s, Central Ave. not for publication
city, town and the Norfolk & Western R.R., New Castle vicinity
state Indiana code IN county Henry code 065 zip code 47362

3. Classification

Ownership of Property	Category of Property	Number of Resources within Property	
<input checked="" type="checkbox"/> private	<input type="checkbox"/> building(s)	Contributing	Noncontributing
<input checked="" type="checkbox"/> public-local	<input checked="" type="checkbox"/> district	<u>64</u>	<u>17</u> buildings
<input type="checkbox"/> public-State	<input type="checkbox"/> site	<u>0</u>	<u>0</u> sites
<input type="checkbox"/> public-Federal	<input type="checkbox"/> structure	<u>0</u>	<u>0</u> structures
	<input type="checkbox"/> object	<u>0</u>	<u>0</u> objects
		<u>64</u>	<u>17</u> Total

Name of related multiple property listing: N/A
Number of contributing resources previously listed in the National Register 5

4. State/Federal Agency Certification

As the designated authority under the National Historic Preservation Act of 1966, as amended, I hereby certify that this nomination request for determination of eligibility meets the documentation standards for registering properties in the National Register of Historic Places and meets the procedural and professional requirements set forth in 36 CFR Part 60. In my opinion, the property meets does not meet the National Register criteria. See continuation sheet.

Patrick R. Kabeton 10-29-91
Signature of certifying official Date
Indiana Department of Natural Resources
State or Federal agency and bureau

In my opinion, the property meets does not meet the National Register criteria. See continuation sheet.

Signature of commenting or other official Date

State or Federal agency and bureau

5. National Park Service Certification

I, hereby, certify that this property is:

entered in the National Register.
 See continuation sheet.

determined eligible for the National Register. See continuation sheet.

determined not eligible for the National Register.

removed from the National Register.

other, (explain:) _____

Signature of the Keeper Date of Action

6. Function or Use

Historic Functions (enter categories from instructions)

GOVERNMENT/courthouse

COMMERCE/professional

COMMERCE/financial institution

COMMERCE/specialty store

Current Functions (enter categories from instructions)

GOVERNMENT/courthouse

GOVERNMENT/government offices

COMMERCE/business

COMMERCE/professional

7. Description

Architectural Classification
(enter categories from instructions)

Italianate

Classical Revival

Commercial Style

Materials (enter categories from instructions)

foundation STONE/Limestone

walls BRICK

STONE/Limestone

roof ASPHALT

other METAL/Cast iron

TERRA COTTA

Describe present and historic physical appearance.

The New Castle Commercial Historic District is located in New Castle in the northeast quadrant of Henry Township, within one mile of the geographic center of Henry County. The Henry County Courthouse is central to the district and sits at the top of a hill, which is one of the higher spots in Henry County's gently rolling landscape.

The district is a dense collection of largely two and three story buildings that abut one another along Broad Street and the east side of South Main, 14th and 15th Streets. One story buildings are found at the west and east edges of the district. The majority of buildings along Broad span their blocks from north to south with secondary facades on Fleming or Race Streets. The predominant architectural styles represented are Italianate and Classical Revival. New concrete streets and sidewalks, and period lamp posts are found along Broad Street.

The district has 81 total resources, which consists of 64 contributing buildings and 17 noncontributing buildings. This count does not include the Henry County Courthouse, and 4 contributing objects which together were individually listed on the National Register of Historic Places on April 21, 1981. The noncontributing buildings consist of 4 buildings built since the period of significance and 13 buildings that have been altered so that no historic integrity remains.

GREEK REVIVAL

The oldest known building in the district is the Murphey Building at 100 South Main (photograph 2). This Greek Revival, brick, three and one half story building, built in 1849 by Miles Murphey occupies a prominent spot in the district opposite the courthouse and at the southeast corner of the district's busy commercial thoroughfare, Broad Street, and Main Street. The ground floor has been substantially altered with a c. 1970's shake shed roof, vertical wood siding, and large plate glass display windows. The upper floors retain their historic appearance, although many of the windows are covered with plywood.

The pared-down simplicity, typical of the Greek Revival aesthetic is evident in the plain brick facade with five bays across the front each with one double hung, wood frame window in a rectangular opening. Most of the windows were replaced with two over two sash prior to 1895, however, three of the original, six over six sash windows remain. The main or west facade features a modified temple front which faces the courthouse square. A low pitch pediment with full

8. Statement of Significance

Certifying official has considered the significance of this property in relation to other properties:

nationally statewide locally

Applicable National Register Criteria A B C D

Criteria Considerations (Exceptions) A B C D E F G

Areas of Significance (enter categories from instructions)

Architecture
Commerce
Industry
Government

Period of Significance
1849-1941

Significant Dates
N/A

Cultural Affiliation
N/A

Significant Person
N/A

Architect/Bullder
Isaac Hodgson

State significance of property, and justify criteria, criteria considerations, and areas and periods of significance noted above.

The New Castle Commercial Historic District is eligible for the National Register based on its association with the history of government, it is the county seat, and commerce, it is the historical center of commercial and industrial development, in New Castle and Henry County. The district is also significant for its embodiment of the characteristics of several commercial architectural styles of the nineteenth and twentieth centuries including Greek Revival, Italianate, and Classical Revival. Its significance is easily discussed within the context of county seats and commercial centers in Indiana's east central region, noted historically for their association with the gas boom of the late nineteenth century. The district displays a wealth of architecturally intact historic commercial and governmental buildings important for the identification of New Castle's historic past.

The New Castle Commercial Historic District can be evaluated within the historic context of seats of county government and commercial activity in the east central region of Indiana between 1849 and 1941. (This area is the southern part of Historic Preservation Planning Region 5.) Within this geographically defined area, New Castle, county seat of Henry County, can be compared with the county seats of surrounding counties which include Madison, Delaware, Randolph, Wayne, Fayette, Rush and Hancock. All but two of these counties, Randolph and Henry, have published Interim Reports as part of the Indiana Historic Sites & Structures Inventory.

Religious groups, such as Quakers and Moravians, and hunters and traders, were among the first Europeans to settle these counties between 1801 and 1823, coming into this region from the south. Within Region 5, only Wayne County, established in 1811, was chartered before Indiana became a state. The last among them to become a county was Hancock in 1828. By 1835, the National Road had made its way across Wayne, Henry, and Hancock counties, which aided the growth of towns along its course, including Richmond, Centerville, and Cambridge City in Wayne County, Knightstown in Henry County, and Greenfield in Hancock County.

See continuation sheet

9. Major Bibliographical References

Previous documentation on file (NPS):

- preliminary determination of individual listing (36 CFR 67) has been requested
- previously listed in the National Register
- previously determined eligible by the National Register
- designated a National Historic Landmark
- recorded by Historic American Buildings
Survey # _____
- recorded by Historic American Engineering
Record # _____

See continuation sheet

Primary location of additional data:

- State historic preservation office
- Other State agency
- Federal agency
- Local government
- University
- Other

Specify repository:

Henry County Historical Society Museum

10. Geographical Data

Acreage of property approximately 18 acres

UTM References

A	<u>1,6</u>	<u>63,90,0,0</u>	<u>4,42,13,2,0</u>
	Zone	Easting	Northing
C	<u>1,6</u>	<u>63,95,5,0</u>	<u>4,42,10,8,0</u>

B	<u>1,6</u>	<u>63,95,5,0</u>	<u>4,42,13,2,0</u>
	Zone	Easting	Northing
D	<u>1,6</u>	<u>63,90,0,0</u>	<u>4,42,10,7,0</u>

See continuation sheet

Verbal Boundary Description

See continuation sheet

Boundary Justification

See continuation sheet

11. Form Prepared By

name/title Cynthia Brubaker, Architectural Conservator date March 1, 1991
 organization Portfolio Design Inc. telephone 812/334-2488
 street & number 222 N. College Ave., Suite 300 city or town Bloomington state Indiana zip code 47404

United States Department of the Interior
National Park Service

National Register of Historic Places
Continuation Sheet

Section number 6 Page 1

New Castle Commercial Historic District

Historic Functions (continued)

COMMERCE/department store
COMMERCE/restaurant
DOMESTIC/hotel
SOCIAL/meeting hall
RECREATION/theatre
INDUSTRY/manufacturing facility

Current Functions (continued)

COMMERCE/financial institution
COMMERCE/specialty store
COMMERCE/restaurant
DOMESTIC/multiple dwelling
SOCIAL/meeting hall
VACANT

United States Department of the Interior
National Park ServiceNational Register of Historic Places
Continuation SheetSection number 7 Page 1 New Castle Commercial Historic District

entablature of wood crowns the building. A double hung, six over six, wood frame window with sidelights and an elliptical fanlight panel above is enclosed within the pediment, although the window is currently covered with plywood. The original building is nearly square in plan with five bays along the north or Broad Street facade. At some point before 1871, the building nearly doubled in length with a brick addition to the rear. Another addition from the 1920's is not visible from the street. The first addition has six bays along Broad Street and extends the low pitch gable roof. Brick dentils are outlined at the cornice with wood molding above. Original features of the building's interior include the location of the stairway from the first to the second floor, the stairway and stairs from the second to the third floor, and the floor plan, plaster, and wood trim on the third floor.

The Murphey Building is currently vacant except for a portion of the building at the rear, which is owned and occupied by the neighboring Americana Savings Bank. A rehabilitation of the building is currently in the planning stages by the City of New Castle, who owns the building. Although the building clearly contributes to the district in its current form and stands as a positive definition of the beginning of the district's period of significance, a sympathetic rehabilitation project will further enhance its stature within the district.

HENRY COUNTY COURTHOUSE

The most prominent building in the district is the Henry County Courthouse (photograph 1). This two story brick structure with raised basement, limestone trim, and pressed metal cornice, was designed in the Italianate architectural style with elements of the Second Empire and Renaissance Revival styles by Isaac Hodgson. The original building, completed in 1869, is 66 feet wide and 82 feet long with a 50 foot high tower bisecting the east facade and incorporating the main entrance. In 1905, a 66.6 foot addition was added to the west facade in a style duplicating the original. The length of the building, which is symmetrical in plan and decoration, corresponds to the length of the rectangular square along Broad Street. The building nearly fills the square with approximately 30 feet of greenspace on all sides.

The surrounding grounds are neatly landscaped with trees, shrubs, flower beds, and grass. In front of the main entrance on the east side are three contributing objects including a Civil War memorial erected in 1923, and two planters, and two noncontributing objects: a New Castle Sesquicentennial tablet and a war memorial tablet. Another contributing object, a planter, is in front of the west entrance. Concrete walks in semi-circular patterns emanate from each side of the building. A low, concrete retaining wall separates the lawn from the sidewalk on the north and east sides.

The raised basement is ensconced in a dressed limestone foundation with protruding watertable. The bottom half of the foundation, visible towards the

United States Department of the Interior
National Park Service

National Register of Historic Places Continuation Sheet

Section number 7 Page 2 New Castle Commercial Historic District

west end as the slope falls away from the building to the west, is rock-faced limestone. The body of the building is red brick laid in common bond and in running bond in the 1905 addition. The quoins, and window and door surrounds are also limestone. The cornice is of pressed metal.

The central, square tower with mansard roof extends one and one half stories above the main building. The dressed limestone base of the tower has a large curved base molding resting on the watertable. The brick body of the tower is broken by four stone string courses, stone quoins at the corners, and tall, narrow, round arched windows with stone surrounds at the sides of the tower. The main entrance is housed in an arched opening of engaged stone columns and dressed stone voussoirs with a plain archivolt. A niche with a statue of Blind Justice resting on a corbelled platform, all of stone, is housed in an arch above the entrance. Another arch above this encloses a stone tablet giving the date of construction, and the names of the commissioners, architect and superintendent. On all four sides at the top of the tower is a window ensemble composed of a round window flanked by smaller rectangular windows and framed by short pilasters and heads with keystones, all of stone. A heavy, bracketed, pressed metal cornice arches over the window ensembles. A slated mansard roof with round, stone clock faces on all four sides rises above the cornice and is concluded by a bracketed curb and balustrade.

Window openings on the rest of the building include round arched, basement-level, openings in the limestone foundation and on the first floor with stone quoins and stepped voussoirs. On the third floor level there are rectangular window openings with stone, shouldered architrave trim and Palladian windows with stone surrounds similar to those found at the top of the tower. Original wood sash remains on only a few of the windows; most have been replaced with newer combination sash units.

Slightly projecting bays on the north and south facades are defined by corner quoins, secondary entrances, Palladian windows, over which the bracketed cornice arches, and a low pitched pediment with the same bracketed cornice above. Another entrance is found at the west end similar to the main entrance on the east end. The 1905 addition has three stories to the original building's two, however the exterior fenestration conceals this difference.

The interior of the courthouse also retains many original features including marble wainscoting, black and white marble tile floors laid on the diagonal, large vaults for record storage, and a decorative metal staircase with openwork detail in a leaf motif. A large courtroom is located on the second floor which features wood wainscoting and a judge's dais with Corinthian capitals atop fluted columns which support a full entablature and flank a small alcove. Alterations to the offices throughout the building and the courtroom include lowered ceilings, new fluorescent lighting, carpeting, and modern windows.

United States Department of the Interior
National Park Service

National Register of Historic Places
Continuation Sheet

Section number 7 Page 3 New Castle Commercial Historic District

Despite these changes, the courthouse retains much of its nineteenth century aura and has high architectural integrity.

ITALIANATE

The L.A. Jennings Building at 1331-1337 Broad Street, one block east of the courthouse, is one of the most outstanding buildings in the district (photograph 23). Originally built in 1877 by local furniture manufacturer Levi A. Jennings, this three story brick building is a stellar example of Italianate commercial architecture and is notable for its entire facade of cast iron. While the first floor has been altered with 1950's to 1970's style storefronts with brick bulkheads, vertical siding, and large plate glass display windows, the upper two stories retain their cast iron arcaded facade with bracketed cornice.

The original 1877 building is at the southwest corner of Broad and Fourteenth Streets. The iron skin, which covers the original building and an early addition to the west from the top of the ground floor level to the roof, is cast in the likeness of stone decoration. A second addition farther to the west was added around 1910 and has a brick facade.

The original section is framed by "rock-faced, dressed stone" quoins and its three bays are divided by fluted pilasters with simplified Corinthian capitals. A single, tall, narrow, wood frame window is in each of the outer bays and paired windows are in the center bay. The windows on the second floor are double hung, one over one with segmental arched window heads with projecting hoods resting on engaged Corinthian columns. The windows on the third floor are triple hung, single pane with round arched window heads with projecting hoods resting on engaged Corinthian columns. The center section of the building continues the same arcaded facade and exact window detail with four bays across of one window, a triple window, a paired window, and a single window, with a column of quoins on the west edge.

Highly decorative string courses separate each of the floors and run continuously across the front of the facade. Each of the bays are defined by large brackets supporting an overhanging cornice. Smaller brackets and round decorative vents are found between the larger brackets. Above the center bay of the original section are found the name "L.A. Jennings" and the date "1877". Small floral and shell motifs are found in relief in the spaces above the window hoods.

The newest addition to the west has a simple stone entrance to the upper floors on the right side of the ground level. The arched entrance is flanked by unadorned pilasters, above the arch is the name "Jennings". Double wood doors with large glass panels are recessed beyond the arch. The facade of the upper floors is of red brick with a simple, geometric relief pattern and limestone window sills. There are three bays: small double hung, one over one, wood

United States Department of the Interior
National Park ServiceNational Register of Historic Places
Continuation SheetSection number 7 Page 4 New Castle Commercial Historic District

frame windows flank a group of three larger double hung, one over one, wood frame windows.

The cast iron quoins and two brackets of the cornice turn the corner of the building to its east or Fourteenth Street facade. The remainder of this facade is of unadorned red brick with two rows of paired double hung, one over one, wood frame windows with limestone sills. The windows on the second floor also have transoms and all window sash appears to be original. The grade falls away from the building to the south allowing for an intermediate level at the rear of the building where there are two storefronts of large panes of glass with glass transoms. Originally the basement level was accessed from this Fourteenth Street facade by means of stairs leading down from the sidewalk. The building extends all the way to Race Street behind and has a simple brick facade facing Race.

The Italianate Commercial style continues along Broad Street to the west of the Jennings Building at a smaller scale with a series of two story brick buildings from 1317-1327 Broad built in 1872 (photograph 22 and 23). This "brick block of business stores" as featured in the 1875 An Illustrated Historical Atlas of Henry County, Indiana survives with a fair degree of integrity and originally included two additional similar buildings on either end. These brick buildings with cast iron bracketed cornices and projecting decorative window hoods all have altered ground floor storefronts. Alterations range from a 1940's black carrara glass storefront at 1317 Broad to a 1980's wood paneled storefront with a diagonal board pattern at 1325 Broad. Elements of the former cast iron ground level storefront are evident behind and between the newer storefront accretions and in the cornice molding that runs along the top of the newer storefronts.

All of the second story windows were originally tall, narrow, double hung, two over two, wood frame windows with either segmental or round arched heads with decorative, projecting hoods. The two buildings at 1325 and 1327 once functioned as one with a central entrance to the second floor over which the original, segmental arched window remains. The other windows on these two buildings have been replaced with paired, double hung, one over one, wood frame windows with transoms. Both brick facades have been painted at one time, however both retain their decorative bracketed cornices. The cornice of both buildings is broken in the center by a semi-circular arch flanked by urns atop pedestals. One of the urns atop 1327 Broad is missing.

The buildings at 1321 and 1323 Broad retain all of their original segmental arched windows and projecting hoods on the second floor as well as, most of their original cornice. A particularly narrow window is found over the second floor entrance on the far right side of 1321 Broad. This window is the only original window with one over one, rather than two over two sash in this group of buildings. Steps rose directly from the sidewalk to the second floor without

United States Department of the Interior
National Park ServiceNational Register of Historic Places
Continuation SheetSection number 7 Page 5 New Castle Commercial Historic District

a door at the bottom at this entrance. (A similar condition existed at the entrance to the second floor of 1325-1327 Broad.) This is still apparent by the recessed doorway at the top of several steps leading directly off the sidewalk. The cornice of 1323 Broad is broken with a segmental arch flanked by urns on pedestals, all of which survive. A clock face below the arch and a second floor level balustrade no longer survive. Finials and a decorative panel with the name "Kahn" on top of the cornice at 1321 Broad have also disappeared. This cornice is continuous with large brackets punctuating the building's three bays and smaller brackets in between. The brick facades of both buildings are painted.

The building at 1317 Broad has replacement infill windows which are shorter than the originals and square at the top rather than round arched as the originals were. The bracketed, continuous cornice appears to be unchanged. No evidence remains of a second floor level balustrade. The brick facade has been covered with a stucco coat scored to appear like large stone blocks.

Most of these buildings continue through to Race Street with storefronts or entrances facing Race Street. The Race Street facades are simpler with plain brick facades. At least one building, 1321 Broad, retains its pressed metal ceiling on the inside of the first floor and one can see from the front door on Broad straight through to the back door on Race. Despite several changes throughout the years, this group of commercial stores stretching from 1317 to 1327 Broad are a delightful collection of Italianate architecture from the 1870's and represent well this period in the district's history.

Another outstanding example of the Italianate commercial style is the Odd Fellows Building at 200 South Main (photograph 3). This brick structure at the southeast corner of Main and Race Streets, cater corner from the courthouse, was originally built with two stories in 1875. A third floor was added with Romanesque Revival influence c. 1895. The first floor storefront has been altered with large plate glass and aluminum frame storefront systems, vertical wood siding, and a flat, rectangular awning. Tall, narrow, double hung, one over one, wood frame windows fill each of the five bays across the front of the building on both upper floors and line the side along Race Street. The second floor windows have segmental arched heads and, across the front facade, decorative, projecting hoods of cast iron. The third floor windows have leaded, colored glass panes and transoms with segmental arched heads along the Race Street facade and round arched heads with wide round arch lintels of brick along the main facade. The stone lintels (between transom and window) and sills of the third floor windows on the main facade are contained in a stone string course which runs across the width of the main facade. Above the third floor windows on the main facade is a blind arcade of brick broken in the center bay by a small, slightly projecting pavilion. Supported by brick pilasters resting on stone bases, the pressed metal entablature announces "Fraternity I.O.O.F. No.

United States Department of the Interior
National Park ServiceNational Register of Historic Places
Continuation SheetSection number 7 Page 6 New Castle Commercial Historic District

59", with a broken pediment of decorative scrolls above. The high, brick parapet wall (its height revealed from the side) is crowned by a bracketed, pressed metal cornice with large brackets defining the bays and smaller brackets and dentils between. A fourth floor level at the rear of the building is visible at the back of the Race Street facade and across the rear facade.

The interior of the building retains much of its original character. The only significant changes are in the front half of the ground level retail spaces. Pressed metal ceilings remain throughout the first floor. The second floor retains most of its original floor plan, which consists of several small rooms. A significant interior space is found on the third floor in the original lodge room. The approximately 40 foot square room with approximately 20 foot ceilings has decorative, pressed metal wainscoting and coffered ceiling, five hanging lamps, four fireplaces, wood base board, and is illuminated by the leaded, colored glass windows, which depict classical columns. The hanging lamps are operated by an elaborate apparatus, which adjusts the level of lighting. The lamp shades are constructed of a plaster or ceramic material, some of which is damaged, and the marble fireplace mantels have been removed. Four south facing windows previously had leaded glass windows with themes relating to the Odd Fellows lodge. Anterooms with built-in wood cabinetry adjoin the lodge room to the east. The fourth floor contains a kitchen and banquet room with a balcony, which overlooks the lodge room.

The interior is in fair condition due to a leaking roof, some missing or damaged elements, and needed plaster repair. The exterior brick facade remains in its original unpainted condition, however the pressed metal decoration is rusting and stained in places. Despite its fair condition, the building retains a high degree of architectural integrity and is an important anchor at its corner of the courthouse square.

Adjacent to the Odd Fellows Building is a smaller, two story, brick, Italianate commercial building at 208 South Main (photograph 3). The ground level storefront of this c. 1885 structure was altered some time ago and was recently remodeled. The two bays of the upper floor are defined by two tall, narrow windows with ornate, projecting hoods of cast iron. The window frames and sash have been altered with smaller wood frame windows, flat awnings and grills. The cast iron cornice features large brackets on either end and a pair of large brackets in the center with smaller brackets and a row of dentils in between. The entire facade was also recently repainted.

The two story, brick, Italianate commercial building at 1129 Broad, built c. 1885, is one of the few buildings in the district which retains much of its original storefront (photograph 11). Brick pilasters with inset panels frame the facade. Elements of the original cast iron storefront include piers, which divide tall, narrow display windows with low bulkheads, doors with transoms, and

United States Department of the Interior
National Park ServiceNational Register of Historic Places
Continuation SheetSection number 7 Page 7 New Castle Commercial Historic District

a bracketed cornice. Two tall, narrow, segmental arched windows on the second floor have been partially filled in with brick and wood frame windows two thirds the height of the originals. The cast iron cornice is modestly decorated with three brackets and a sawtoothed pattern.

There are at least four other buildings in the district found along Broad Street which exhibit elements of the Italianate commercial style, but which have suffered varying degrees of alterations over the years. All have drastically altered ground level storefronts. The former Courier Printing Company Building at 1408 Broad, built in 1869, retains its distinctive, bracketed, cast iron cornice, but its brick facade was apparently refaced with newer, yellow brick (photograph 34). Two buildings, 1332 and 1400 Broad, retain their second floor, tall, narrow windows with cast iron, projecting hoods (photographs 21 and 34 respectively). The latter building, built c. 1875, has heavy, pedimented window hoods and a distinctive bevelled corner which accentuates the building's corner location. The 1882 building at 1125 Broad reveals only a whisper of the Italianate style in its formerly tall, narrow window openings with segmental arched heads that have been filled in with shorter windows and brick (photograph 11).

ROMANESQUE REVIVAL

Another early, commercial building in the district, built c. 1870, is found next to the Murphey Building at 110 South Main (photograph 2). This two story, brick structure displays elements of the Romanesque Revival style with its brick, monochromatic facade, second floor arcade defined by a pronounced archivolt trim around tall, narrow, shuttered windows with segmental arched heads, and a corbel table above. The cast iron cornice is enhanced by a row of acanthus leaves. The ground floor has a modern, large, plate glass storefront and an awning with wrought iron pillars and balustrade.

VICTORIAN ROMANESQUE

Two stalwart examples of the style John Blumenson calls Victorian Romanesque are the Knights of Pythias Building at 1202 Broad, built in 1891 (photograph 15); and the Masonic Temple directly across the courthouse square at 1201-09 Race Street, built in 1892 (photograph 4). Both buildings are large, three story, brick structures with stone trim, a variety of surface texture, arches, belt courses, and a variety of window sizes.

The Knights of Pythias Building has an altered storefront with large, plate glass windows, glass and aluminum frame doors, and a shed roof awning. Brick pilasters with rounded edges frame the corners of the buildings and divide the four, asymmetrically sized bays. These pilasters are banded with rock-faced stone courses between floor levels and as lintels and sills. All four bays have large, two story high arched openings. The first two bays (from the west) each have two tall, narrow window openings filled in with corrugated metal and a

United States Department of the Interior
National Park ServiceNational Register of Historic Places
Continuation SheetSection number 7 Page 8 New Castle Commercial Historic District

semi-circular field of tapestry brick above within their arched areas. The third bay is similar but its arch is much larger and has three window openings. The fourth bay has a paired window and a triple window with transoms above. These windows are all double hung, one over one, wood frame and the transoms are multi-paned with colored glazing. Above the arches in each bay is a field of rock-faced brick and in the first, second and fourth bays there are paired, triple-paned, wood frame windows. A stone, bracketed cornice extends across the main and 12th Street facades, above which there is a brick parapet topped by a metal cornice. Some of the stone banding and brick pilasters extend along the 12th Street facade. The entrance to the Knights of Pythias hall upstairs is found at the far east end of the ground floor, main facade and is marked solely by a tiled floor with the letters "F C B" and "K. of P."

The upper floors of the interior retain much of their original character. The lodge room on the second floor is a large two story volume with a pressed metal, coffered ceiling, painted murals on the walls, and a stage outfitted with wood pocket doors. From this room, the colored, multi-light transoms of the second floor windows, (covered on the outside), are visible. The small, triple-paned windows mentioned above are above the level of the ceiling, purportedly to vent the metal hung ceiling. A banquet room on the third floor opens onto a rounded balcony, which overlooks the lodge room.

The Masonic Temple retains a high degree of integrity with its virtually intact storefronts with transoms across the main facade and along the 12th Street facade, and original windows except for glass block inserted in third floor windows. The building's gabled central bay has a two story, round arched entry with polished stone pilasters, capitals and voussoirs. Within the gable is a stone course at cornice level with the name "Masonic Temple." in raised stone letters and a round arched, paired window with stone voussoirs above. This double window and those on the second floor are all double hung, one over one, wood frame windows. The second floor windows also have transoms. The third floor window openings, within two stone arches in the outer bays and rectangular stone lintels in the center bay, are filled in with glass block, brick, and small, rectangular, two-paned windows. The bracketed cornice extends around the front and side facades and there is a hipped roof. The rear portion of the building is two and one half stories in height with a hipped roof, once housed a large theater, and was rebuilt after a fire in 1926. An arched entry with full entablature at the side of the building provides entrance to the second and third floor. At the time of the renovation in 1927, a three story addition was added to the east, bridging the gap between the Masonic Temple and the neighboring building. The interior retains most of its original floor plan and many details including a pressed metal, coffered ceiling in the former theatre area, plaster walls, and wood floors and trim. The third floor lodge room was altered sometime in the 1950's with glass block in the windows and a wood tile wainscoting, but retains its narrow balcony along the south wall.

United States Department of the Interior
National Park ServiceNational Register of Historic Places
Continuation SheetSection number 7 Page 9 New Castle Commercial Historic District

A few other buildings, built before the turn of the century, but which do not fall into definite categories of architectural style, and which have suffered varying degrees of alterations should be mentioned. One of the earliest buildings in the district is found at 1517 Broad, a one and one half story structure with a c. 1905 brick facade with a gabled parapet (photograph 31). This former livery and auto showroom was built sometime before 1871. A similar situation exists at 1130 Broad, where a brick commercial facade was added in 1913 to a former church (photograph 14). The 1857, gabled, brick structure with bricked-in, tall, narrow window openings, and wood eaves is clearly visible from the 12th Street facade of the building. A second Jennings Building or "Jennings Block" was built at 1502 Broad in 1896 by L.A. Jennings (photograph 32). The facade of this three story, brick, commercial building was greatly altered in 1929 when the original storefront configurations were consolidated from four individual retail spaces to one large store, and cast iron decoration was removed.

CLASSICAL REVIVAL

The most well represented commercial architectural style before the turn of the century in New Castle is the Italianate. After the turn of the century, the Classical Revival style, or Neo-Classicism, is by far the most dominant and exuberant in the district. No less than half a dozen multi-storied, brick, commercial buildings were built between 1901 and 1908, most along Broad Street, which display a variety of classical detail including symmetrically arranged, pilastered facades, large, single-light sash windows, and cornice molding with parapets above. The former "Hotel Dengler" at 1214 Broad, in addition to the features outlined above, has stone belt courses between floors, leaded glass, fan light transoms above the third story windows, Ionic capitals atop the brick pilasters dividing the building's four bays, and a pressed metal cornice supported by corbelled brick brackets along the parapet (photograph 16). The first floor storefront was altered with the addition of c. 1940's carrara glass.

The five story Bradway Building at 1211-15 Race Street was built as the "Maxim Building", a mixed use building with stores, offices, and apartments, in 1902 (photograph 4). Four four-story-high pilasters with dressed stone bases and modified Ionic capitals divide the buildings five bays. The outer bays have raised brick bands, which simulate coursed ashlar. There are paired wood frame windows in each of the bays of the upper floors; the windows of the three central bays on floors two and three have flat arch lintels with pronounced keystones. The monumental, pressed metal cornice features a raised greek key motif along the entablature and dentils painted in a contrasting color. Five pedestals, including an extra wide one with the name "Bradway" across the front, further adorn the parapet. The ground level storefront retains its original configuration in part and is partially altered with large, plate glass display windows.

United States Department of the Interior
National Park ServiceNational Register of Historic Places
Continuation SheetSection number 7 Page 10 New Castle Commercial Historic District

Very similar, three story buildings are found at 1122 Broad, 1421 Broad, 1415 Broad and 200-06 South 14th (photographs 13, 27, 26 and 24 respectively). The first three buildings all have brick pilasters between bays across the main facade and the fourth has raised, brick quoins at its corners. The first two have flat arch, stone lintels with pronounced keystones over most or all of the upper story windows. Each has a decorative cornice molding with brick parapet above. The first and third buildings have corbelled brick brackets below the cornice and the parapet of the second building has an open arcade. The ground floor storefronts on all of these buildings retain their original proportions and some degree of original fabric. The east storefront of 1415 Broad was altered with the addition of c. 1950's carrara glass.

Five other buildings built during the first decade of this century, can be loosely classified in this category, but display only simple brick facades with some geometric patterning. The Imperial Hotel Building at 1318 Broad was built around 1880, but between 1901 and 1908 a third story and new brick facade was added, dramatically changing the facade (photograph 20). A stone tablet with the name "Imperial" is embedded in the brick over the center bay and below the parapet. The cornice is created by a corbel table. Two large arches are found across the rear facade, a reminder of the rear part of the building's nineteenth century function as a livery for hotel guests. The neighboring building, 1310 Broad, was also a c. 1880 two story structure, which received a new brick facade sometime after the Imperial's new facade (photograph 20). A stone tablet with the words "Clift.Bro's" is embedded in the parapet. Geometric patterning with stone accent blocks provide the only other decoration to the facade. Five cast iron, fluted pillars are found across the ground floor level of the two buildings, which have modernized storefronts.

The other three buildings in this group are 210 South Main, 1411 Broad, and 116 South 15th Streets (photograph 3, 26 and 30). All have two stories. The first has a corbel table, stone tablets with the names "Stafford" and "Henshaw", and a stepped parapet. The second, built in 1902, has a field of textured terra cotta pieces across the parapet. The first two have altered ground floor storefronts. The third has its original storefront intact.

Neo-classicism found another incarnation in New Castle among buildings associated with the advent of the automobile, its sales and service. The one and one half story, brick and stone building at 1121 Broad, built between 1901 and 1908, exhibits a degree of style which belies its relative small size (photograph 10). Four brick pilasters with stone bases and capitals divide the building's three bays for the height of the first floor. Resting on top of these pilasters is a stone cornice separating the first floor from the half story above. The brick pilasters continue with another set of pressed metal capitals, above which there is a full entablature of pressed metal adorned with round medallions above each pilaster. The brick pilasters continue above the

United States Department of the Interior
National Park ServiceNational Register of Historic Places
Continuation SheetSection number 7 Page 11 New Castle Commercial Historic District

cornice onto the brick parapet. The center bay of the parapet extends above the outer bays with a flemish gable. A stone tablet with the words "Burk & Son" in raised letters is embedded in the center gable of the parapet. The first floor openings between the pilasters are filled in with c. 1980's wood siding, single pane, fixed windows, and a glass and aluminum door. A triple set of small square windows with Roman cross mullions, currently covered with plywood, are found in each bay at the upper half story level.

The building extends all the way through to Race Street and has an equally interesting rear facade (photograph 7). It is almost identical to the Broad Street facade, but only one story in height. The original openings are intact; a door and window in the first bay and two windows in the third bay all have flat arch brick lintels with a pronounced stone keystone. The center bay has the original, large, overhead, wood paneled garage door with four rows of small-pane windows.

A similar structure appeared approximately fifteen years later and two doors to the west at 1111 Broad (photograph 9). This one story brick building has a parapet with stone coping and stone detailing. The center of three bays has a simplified flemish gable, which rises above the parapet. A stone tablet with the name "Burk" inscribed into it is embedded in the brick of the center bay. Circa 1950's carrara glass covers the original pilasters across the storefront and large, fixed pane glass fills the openings. This building also has a Race Street facade which is almost identical to the main facade (photograph 7). Here one can see the original brick pilasters with plain stone bands for bases and capitals. An original, overhead, wood paneled garage door with two rows of small-pane windows is found in the center bay.

A less ornate 1513 Broad was also built for the sales and service of automobiles around 1920 (photograph 31). This red brick, one story building has stone detail, which consists of a simple watertable, bases and banding at the top of the brick pilasters dividing the four bays, small square blocks which adorn the parapet, and parapet coping.

The influence of the Classical Revival style continued into the 1920's among New Castle's commercial buildings, although the exuberance of the style diminished in the buildings of the 1910's and 1920's. A three story, brick building with pressed metal cornice at 1430 Broad and a two story, polychromed, glazed brick building at 1116 Broad, both built between 1908 and 1914 are two examples of this trend (photographs 33 and 13 respectively). Both of these structures have symmetrically arranged facades, the former with brick pilasters, and both have large, single-light sash windows. The cornice of the former is supported by a few sparse brackets, and its ground floor storefront has recent alterations. The latter retains its original storefront configuration and materials, has two projecting bays on the second floor, and a flat parapet adorned only by a row of small dentils at the very top. Original fireplaces built with the same yellow

United States Department of the Interior
National Park ServiceNational Register of Historic Places
Continuation SheetSection number 7 Page 12 New Castle Commercial Historic District

and green glazed brick found on the facade are found on the outside walls of the ground floor retail spaces at 1116 Broad.

The district's best example of the Classical Revival influence in the 1920's is the three story building at 105 South 12th, which also has frontage on Broad and Race (photograph 6). This red brick building has white, glazed, terra cotta detail, which consists of simple string courses and parapet coping, and small square blocks with Sullivanesque designs. A long row of intact ground level storefront openings with large, single panes of glass and multi-light, purple tinted transoms, rests upon a granite clad foundation. The upper stories have rows of paired double hung, one over one, wood frame windows, which are grouped vertically by patterning in the brick and corner squares of decorative terra cotta. A bracketed cornice and notched parapet with coping runs around all three facades.

The former United Brethren Church at 126 North 14th Street is the only church building within the district boundaries (photograph 36). This one and one half story, pedimented gable front, brick structure was originally built in 1863, substantially remodelled in 1883, and again sometime in this century. A brick tower, which originally had an arcaded belfry above its current height, is located at the northwest corner of the building. Pedimented entrance porticoes with simple Doric columns are found on the west side of the tower and at the rear of the north facade. Three round arched window openings across the main or west facade and four across the north facade have leaded, colored glass panes and fanlight transoms. A two story, pedimented gable front, brick rectory is attached to the church on the south side. The interior retains its original Akron plan sanctuary.

CHICAGO COMMERCIAL

Four buildings in the district built between 1908 and 1916 display characteristics of the Chicago Commercial architectural style, including wider windows, grouped in three's with smaller windows flanking a wide window, narrow vertical piers, and terra cotta facades. The three and one half story, yellow brick building at 1431 Broad has three bays separated by plain brick piers (photograph 27). In each bay of the second and third floors is a group of two narrow windows flanking a wide window, all double hung, one over one, wood frame. Two small, rectangular, single pane windows flank a wider, single pane window in each bay of the half story above the third floor. Elements of stone piers, capitals and a cornice at the ground level storefront have been covered with a c. 1980 brick and glass facade. The three story, brick building at 210-18 South 14th has alternating triple and single windows across the main facade of its upper floors (photograph 24). The center, wider window of the triple group has a fixed, single pane with a transom above.

United States Department of the Interior
National Park ServiceNational Register of Historic Places
Continuation SheetSection number 7 Page 13 New Castle Commercial Historic District

The two three story, brick, buildings at 1220 and 1417 Broad are both clad in white, glazed terra cotta (photograph 17 and 26 respectively). The latter has a simple, classical form with a row of four large, single pane, wood frame windows with transoms on the second and third floors and a plain cornice molding. The former, which was originally built in 1876, received a more ornate terra cotta facade in 1916. Double hung, one over one, wood frame windows, the center window twice as wide as the outer two, with multi-paned transoms, form the window ensembles found in each of two bays on both upper floors. Two story high pilasters divide the bays and, together with two brackets, support a full entablature enriched with three rosettes. The pilasters, adorned with wreaths, resume on the parapet. Small lion heads are found at the base of the outer two pilasters at the second floor level. The storefront has been recently renovated.

BEAUX ARTS CLASSICISM

The district's two examples of Beaux Arts Classicism are, predictably, two bank buildings on Broad Street. Both built in 1923, the Citizens State Bank Building at 1238 Broad and the First National Bank Building at 1338 Broad are also both two story, stone faced, brick structures at prominent corner locations, the former at Main and the latter, one block away, at 14th (photograph 18 and 21 respectively). The former was originally three bays wide and was later doubled in size with a continuation of the same stone facade. The two buildings have typical elements of the style commonly used to express corporate wealth and portray a sense of stability and security to the small town investor. These include dressed, stone foundations, central entrances, pilastered facades and parapets, enriched entablatures, and pronounced cornices. The Citizens State Bank Building has coupled pilasters along both facades and its parapet, which also has partial balustrades. The First National Bank Building, which has only three bays across its front facade to the Citizens State Bank Building's six, sports a cartouche over the entrance with the letters "FNB", the ghost of the words "First National Bank" along the frieze, and an open book medallion with the date "1923" on top of the parapet. Both buildings have large, fixed, single pane windows and doors, and modernized interiors.

INDUSTRIAL

Three buildings in the district were originally constructed for the purpose of manufacturing. The former S.P. Jennings and Sons Handle Factory complex is located at 200-18 South 15th (photographs 29 and 30). The original building is a c. 1890, two story, brick structure, which originally had an additional half story in a gabled front. The front of the building has newer windows and doors and a coat of stucco on the brick. A c. 1910, two story, brick structure was joined to the original building around 1930 with a one story brick addition. The former Kurnfort Garment Company at 1124 Broad was built in 1918 of fireproof reinforced concrete (photograph 14). The facade is covered with corrugated metal, but the shape and color of the cladding allows an understanding of the

United States Department of the Interior
National Park Service

National Register of Historic Places Continuation Sheet

Section number 7 Page 14 New Castle Commercial Historic District

building's original form. The former Sears Warehouse at 1408-14 Fleming is a concrete structure with pilastered walls and steel posts and trusses (photograph 35). This former auto top factory was constructed around 1920.

ART MODERNE

The former Coca-Cola Bottling Building at 123 North Main is a two story, yellow brick building with a black granite clad foundation and Art Moderne detailing (photograph 19). The building, originally built around 1905, received a facade remodeling in 1941 when the Coca-Cola Bottling Works took over the building. The slightly projecting, off center, stone, entrance bay has a two story opening, which is recessed in a stepped back surround with a door at ground level and glass block above. The left bay has two rectangular window openings at ground level and a hexagonal opening with a vent above. To the right of the entrance bay are two large, single pane windows at ground level. The parapet has rounded stone coping. Interior detailing includes a marble panelled lobby with terrazzo floor, two wood panelled offices, and glazed brick walls throughout the rest of the building.

The most recent buildings within the district's period of significance include a c. 1940, one story, commercial building at 1401 Broad and its neighbor, 1405 Broad (photograph 25). These two buildings have a wide open, glass and aluminum storefront, walls, including a high parapet, of rose colored, porcelain enamel panels and a foundation clad in black, porcelain enamel panels. Art Moderne influence can be seen in the curved recess for the main entrance and curved corners of the building. A small, c. 1935, brick, former filling station stands at 1102 Broad. This nearly square structure with hipped roof stands at an angle to and set back from the street.

NONCONTRIBUTING

The noncontributing buildings in the district fall into two categories: buildings built within the period of significance that have lost substantial integrity due to alterations; and buildings built since the period of significance. Examples of the first type include several two story, brick buildings, built during the 1880's and 1890's, which retain some evidence of original cast iron columns, but have modernized ground level storefronts and corrugated metal cladding over their upper stories. These are 1306-08, 1322, 1326 and 1334 Broad (photographs 20 and 21). Another example is the three story, brick, c. 1920 building at 1416 Broad, which received a complete new brick facade with steel, industrial sash windows around 1945 following a major fire (photograph 34). Three buildings, which border on inclusion within the period of significance, but which have inappropriate alterations, 1101, 1501 and 1505 Broad, are also noncontributing (photograph 8). Buildings built since the period of significance include two two story, stone clad, c. 1960's bank buildings at 112 South Main and 1311 Broad, and a c. 1980, vinyl-sided, residential garage adjacent to 1102 Race (photographs 2 and 22).

United States Department of the Interior
National Park ServiceNational Register of Historic Places
Continuation SheetSection number 8 Page 1 New Castle Commercial Historic District

Fayette County, southeast of Henry County, is characterized historically by its association with the development of the Whitewater Canal which came to Connersville, the county seat, in 1845. There are several remaining Greek Revival buildings which date to this city's industrial prosperity after the arrival of the canal including the county courthouse, the city hall, the former headquarters of The Whitewater Canal Co. and individual homes. The 1849 Murphey Building at 100 South Main Street, New Castle's earliest known building, is the only example of the Greek Revival influence in the New Castle district (photograph 2).

Agriculture developed as an important aspect of the economy of this region, and, along with small industry, proliferated with the coming of railroads to the region between 1850 and 1862. Henry County's courthouse, built in 1869, is one of two courthouses from this period (photograph 1). The Randolph County courthouse in Winchester is a brick, Second Empire style building completed in 1877, but it has been substantially altered by the removal of its tower and mansard roof. The Henry County courthouse, which is Italianate in style with elements of the Second Empire and Renaissance Revival styles, retains a high degree of integrity.

Another important aspect of the region's historical development was the discovery of natural gas in Delaware County, in 1886. Gas was subsequently found throughout this region and created an industrial and economic boom, most evident in Muncie and Anderson. Much industry, including glass manufacturing, was lured to the larger cities in the area, all commercial centers and county seats, due to the availability of inexpensive fuel. The gas supply dissipated by 1900, but established factories substituted coal for gas and stayed on. Natural gas was found in Henry County in 1887 and in New Castle in 1889. Many of the remaining historic resources in this region were constructed during this late nineteenth century boom, including the Romanesque Revival, limestone county courthouses in Richmond, Wayne County, built in 1893, Greenfield, Hancock County, built in 1897, and Rushville, Rush County, built in 1898. These buildings are very different in style, materials and plan than the earlier Henry County courthouse.

Automobile manufacturing played an important role in the economic and industrial development of this region between 1895 and 1937. Connersville (Fayette County) was the location of eight automobile manufacturers between 1905 and 1937, and was once known as "Little Detroit". Fifteen companies in Anderson and one in Elwood (Madison County) produced 21 models between 1895 and 1921. Seven companies in Muncie and three in Albany (Delaware County) manufactured 12 models between 1903 and 1921. Fourteen models were produced in Wayne County between 1901 and 1929 at thirteen companies in Richmond and one in Hagerstown. Two companies in Randolph County, one in Union City and one in Ridgeville, produced four models of cars between 1902 and 1909. Henry County supported eight

United States Department of the Interior
National Park ServiceNational Register of Historic Places
Continuation SheetSection number 8 Page 2 New Castle Commercial Historic District

different companies in Moreland, Knightstown and New Castle starting in 1903. The former Maxwell Briscoe plant, purchased by Chrysler Corporation in 1925 continues to produce automobile parts in New Castle today. The factory building, completed in 1907, still stands and operates south of downtown New Castle.

The New Castle Commercial Historic District is significant for its association with the history of Henry County government and the commercial development of New Castle and Henry County. European pioneers and fur traders first came to the county in 1817 and 1818. A group of permanent European settlers took up residence near the center of the county in 1819, and in the following two years the county was surveyed into townships. In 1821, Henry County was created and New Castle established as the county seat. Early immigrants to the county included Quakers from the Carolinas, Virginia and Kentucky, who brought with them a strong opposition to slavery. Their numbers were great enough that the county became largely anti-slavery and was later in the line of the underground railway. Other religious groups who settled the county early were Methodists, Baptists, and German Baptists or Dunkards.

The early settlers cleared the land for farms and in the fall of 1821 there were 100 homes in the county. In 1822 the first school house in the county was built in New Castle; by 1824 there was a second in Prairie Township north of New Castle. Isaac Bedsaul opened the first store in New Castle in 1823. That year the first post office was established with John Trout as postmaster. In the following year, land was cleared for the public square and the first courthouse was built of log construction. The National Road was completed through the county in 1827. It traversed the southern part of the county through Knightstown, which was platted in the same year and grew to rival New Castle in size and industry. By 1830, New Castle had a population of 130, who lived mostly in log houses, and who exchanged ginseng, deer hams and skins, and furs at the town's two dry goods stores, and who sought refreshment at the town's two taverns.

The second courthouse was built between 1831 and 1836 of brick construction. During this time, the population grew quickly, doubling by 1833 and reaching 400 by 1840. The city's first newspaper, the New Castle Banner, was published in 1835 and in 1839, New Castle was incorporated. The New Castle Courier was established in 1841, a publication which has endured to the present day in the form of the Courier-Times.

The earliest known building in the district is the Murphey Building at 100 South Main, built in 1849 (photograph 2). This brick, Greek Revival structure replaced an earlier frame commercial building, which was probably more typical of the commercial buildings of New Castle's early history. Miles Murphey came to Indiana from North Carolina with his parents and four brothers in 1821. He became a merchant and operated a store in a frame building for a time until he

United States Department of the Interior
National Park ServiceNational Register of Historic Places
Continuation SheetSection number 8 Page 3 New Castle Commercial Historic District

tore it down in 1848 and replaced it with the current structure. The building housed Murphey's store on the first floor and several halls on the third floor. One of the halls was an early place of amusement, and was rented by the county to serve as the courthouse after the second courthouse burned in 1864, until the third courthouse was completed in 1869. By 1886 until the 1970's, the building became synonymous with its function as the corner drug store. From the inception of the Masons New Castle No. 91 lodge in 1850 until the dedication of the Masonic Temple in 1893, the Masons met in another of the third floor halls of the Murphey Building. The Knights of Pythias also met here at their inception in 1873. The Loyal Order of Moose lodge was also located in the building in the years 1915 to 1922. Despite changes to the building at the ground level and on the inside, the overall form of the building and enough of its historic character remains to give a distinct sense of the building's place in New Castle's early history.

In 1850, railroads were completed through the county connecting Knightstown and Shelbyville, and New Castle and Richmond. By 1854 the Chicago & Great Eastern Railroad and the Cincinnati and Indianapolis Junction had come to New Castle. In 1869, New Castle was further connected by rail to Muncie and Connersville, and in 1878 to Rushville, so that by 1893 there were four rail lines in New Castle. Rail service allowed the primarily agricultural county to grow and prosper with access to other markets for the sale of excess goods. Pikes were also constructed after 1852, radiating out from the county seat, and allowing better access to New Castle from all parts of the county and beyond.

The second oldest known building in the district is the former St. John's Lutheran Church building at 1130 Broad (photograph 14). The church was organized in 1850 by fourteen people, who built a brick, Greek Revival style church in 1857 for \$2400. The church was disbanded in 1913 and the building was sold. By 1914, a new brick, storefront facade was added to the front of the building and a butcher shop and American Express Office were operating in the building's two retail spaces. Although the building has served a commercial function since that time, and its main facade clearly indicates its commercial nature, the original church structure is easily identified along the 12th Street facade. Bricked-in windows, a gabled roof, and wood eaves can be seen on three sides. The church was reorganized as the Holy Trinity Lutheran Church in 1925 and has resided outside of the district at 535 South 14th Street since that time.

The population of New Castle grew steadily, doubling or nearly doubling every twenty years in the second half of the last century. In 1850 there were 666 in New Castle, in 1870, 1556, in 1880, 2299 and in 1890, 2697. The First National Bank of New Castle was organized in 1865, and the Citizen's State Bank in 1873, to deal with the county's changing financial needs. By 1871, New Castle boasted five dry goods stores, two ready-made clothing stores, five groceries, three drug stores, three bakeries and restaurants, two hardware stores, one

United States Department of the Interior
National Park Service

National Register of Historic Places Continuation Sheet

Section number 8 Page 4 New Castle Commercial Historic District

stove dealer, three cabinet makers, two plow and wagon makers, one carriage maker, two saw and planing mills, one flouring mill, seven physicians, two dental offices, more than a dozen attorneys, two hotels, three newspapers, three picture galleries, a jeweler, a foundry and machine shop, a printing office, several millinery shops, and more than a dozen practitioners of the building trades. There were also at least five churches including Lutheran, Christian, United Brethren, a "Colored Church", and a Friends Meeting.

The county's increasing wealth made it possible for the County Commissioners to build a large and lavish third courthouse, designed by a prominent architect, in 1869 (photograph 1). The sixty-six (66) by eighty-two (82) foot brick and stone building with a distinctive clock tower was designed in the Italianate style with elements of the Second Empire and Renaissance Revival styles by Isaac Hodgson. (This building was individually listed on the National Register of Historic Places on April 21, 1981). Hodgson designed a brick, two story structure with limestone trim and a pressed metal cornice. Hodgson was born in Belfast, Ireland in 1826, studied architecture under the English architect, Sir Charles Lanyon, immigrated to the United States in 1848, and established his practice in Indianapolis by 1855. Hodgson designed a number of other county courthouses including the Bartholomew County Courthouse in 1874, (listed on the National Register of Historic Places in 1979), the Jennings and Morgan County Courthouses, both similar brick, Italianate structures, and the former Marion County Courthouse. Hodgson is also responsible for some of the buildings of the Arsenal Technical High School complex (listed on the National Register in 1976).

Many of New Castle's commercial structures from the post-Civil War period remain along the district's streets. Some of them have altered facades, such as 1220 Broad, which was originally built in 1876 and received a terra cotta facade in 1916 (photograph 17), or 1306-08 Broad, which has circa 1950's corrugated metal cladding (photograph 20), and no longer convey any sense of New Castle's nineteenth century commercial history. Others retain much of their historic character and are also significant for the businesses or proprietors associated with them.

In 1869, the same year that the courthouse was built, the first Courier Building at 1408 Broad was also built (photograph 34). The New Castle Courier was established in 1841 and was produced in the 1408 Broad building from 1869 until it merged with The Times between 1924 and 1940 and found a new home as The Courier-Times at 210-18 South 14th Street (photograph 24). The paper is still produced today in a building across the street at 201 South 14th Street, which was designed by internationally known architect, Eiel Saarinen and completed in 1960.

United States Department of the Interior
National Park ServiceNational Register of Historic Places
Continuation SheetSection number 8 Page 5 New Castle Commercial Historic District

Members of the Jennings family, who are also associated with New Castle's manufacturing history, are associated with several commercial structures in the district. Levi Allen Jennings came to New Castle in 1867 from Wayne County, Ohio. In 1868, he opened a planing mill, lumber yard, and a sash and door factory, and later manufactured furniture and operated greenhouses. In 1877, the first Jennings' Block was completed at 1331-37 Broad, where Jennings sold furniture, carpets, hardware and house furnishing goods (photograph 23). The store generated \$150,000 per year in sales. Ten years later, Jennings built another business block at 1322-26 Broad, where furniture and hardware was also sold for many years (photograph 38). Jennings was active in the American Furniture Dealers' Association, which was organized in New York in 1892, and served as its first president. His continued success allowed him to build a third building in 1896 at 1502 Broad, which had four stores on the first floor (photograph 32). This building was remodeled in 1929 for A.E. Schuffman for a large furniture store, which remained in business until the 1980's.

Other commercial buildings built during the 1870's include the Italianate group from 1317 to 1327 Broad, built in 1872 (photograph 22). Among the retail establishments originally found here are: J. Cummins' restaurant, featuring cigars, tobacco, confectionery, and fresh oysters in season; Ed Kahn & Co. Dry Goods and Clothing, the New York Store, "agents for Butterick's celebrated patterns"; J.U. Keiser, watches, clocks, jewelry and musical instruments; and Murphey Bros. & Co., Philadelphia Store. The Italianate commercial building at 1400 Broad, built around the same time, housed A.R. Wayman, Groceries, Glassware & Queensware from at least 1884 until around 1910 when it became the Rose City Drugstore, and later Hooks Drugstore (photograph 34).

Two properties in the district were originally constructed as liveryies. The building at 1125 Broad was built by Henry L. Hernly in 1882 and accommodated 100 horses, repair and blacksmith services (photograph 11). There was also a hay loft, paint shop, and living quarters on the second floor. W. Peed & Son, Livery was listed as the proprietors in 1896 and 1901, although William Peed operated a brick livery stable in 1872, perhaps at a different site. By 1920, the Schwab Carpet and Furniture Store had taken up residence in the building. The livery at 1517 Broad was run by several different parties including, Charles C. Colburn, who came to New Castle from North Carolina in 1864 and was listed as proprietor of the livery in 1886, Berry Bros. in 1896, Porch's in 1901, Porch and Peed in 1904, and Sheppel in 1920 (photograph 31). By 1924, the property was adapted for use as an automobile sales and service facility. The Newby Paul Motor Company occupied the building in 1931.

The Jennings' planing mill and furniture factory mentioned above, evolved into the oldest continuous business in Henry County in 1972. The L.A. Jennings Furniture Factory was located just east of the district on the north side of Broad and was the largest factory in Henry County when erected in 1883. The

United States Department of the Interior
National Park ServiceNational Register of Historic Places
Continuation SheetSection number 8 Page 6 New Castle Commercial Historic District

brick factory building, built for \$30,000, employed 150 men. In 1872, S.P. Jennings, a brother to L.A., operated the "S. Jennings Lumber Yard", which, in 1886, was located behind 200-14 South Main. By 1892, the "S.P. Jennings Handle Factory" was operating in a building that still stands at 200 South 15th Street, inside the district (photograph 29). By 1908, the handle factory was listed as the "S.P. Jennings Planing Mill", and later until 1930 the Jennings Lumber and Hardware business operated at the same site.

Other late nineteenth century industry located within the district boundaries included: a cigar factory located on the second floor of 1334 Broad; the New Castle Buggy Works located on the site of the Knights of Pythias Building at 1202 Broad; the Shirk, Johnson & Fisher Sawing and Flouring Mill, established in 1871 and located at the site of 123 North Main; and the L. Rogers Carriage Shop located at the southeast corner of Broad and 11th Streets from at least 1886 until around 1910.

J. Ward Maxim and Henry Waldron opened a handle factory in 1882, one half mile northwest of the courthouse square, when dwindling lumber supplies in Maine brought Maxim to the midwest. Ash was used in the manufacture of shovel handles at the factory that was known as the New Castle or "D." Handle Factory after William C. Bond bought the factory in 1902. The factory continued to operate until 1927 when increasing mechanization slowed the demand for hand shovels.

Other late nineteenth century industry located outside the district included: the Shroyer & Co., flax factory, established in 1871; the New Castle Flouring Mills, established in 1881; Bouslog & Ice's Saw Mill, established in 1883; the Baldwin, Roberts & Co.'s Pork House, established in 1876 and located one half mile southeast of the courthouse square; and three businesses located just east of the district along Broad: the Davis Bros., Grist Mill, Grain Warehouse & Bent Wood Works, the New Castle Ironworks and Foundry, established in 1883, and the J.M. Gough Wagon & Carriage Shop, established in 1868. A history of Henry County published in 1884 listed the L.A. Jennings Furniture Factory, the New Castle Ironworks and Foundry, the Waldron and Maxim Handle Factory, and the town's several mills as the principal industry of the town.

The region's gas boom came to Henry County in 1887 and to New Castle in 1889 with the discovery of gas reserves. Increased industry after this until the turn of the century was evident by the addition of two wagon or buggy works, two creameries, three printing services, two saw mills, one flour mill, two greenhouses, a canning company, a coiled hoop factory, a steam laundry, a steel sewer pipe company, an artificial ice factory, a bicycle factory, four other assorted factories, and the City Electric Light Plant & Waterworks. Of these industries, only the printing shops, each of which were associated with newspaper publications, and the steam laundry were located within the district. Courier Printing was located in the Courier Building at 1408 Broad (photograph

United States Department of the Interior
National Park ServiceNational Register of Historic Places
Continuation SheetSection number 8 Page 7 New Castle Commercial Historic District

34); the Republican Printing was located on the second floor of the Knights of Pythias Building at 1202 Broad (photograph 15); and the New Castle Democrat Printing was located on the site of 105 South 12th Street and in 1908 at 200-06 South 14th Street. A steam laundry was located on site of 1501 Broad.

The only ongoing church in the district is the former United Brethren Church at 126 North 14th Street (photograph 36). The United Brethren congregation was established in 1853 and built the existing brick building in 1863, substantially remodeling it in 1883. The church has undergone additional alterations since that time, including the loss of the top portion of the tower that stands at the northwest corner of the building. The United Brethren and Methodists merged on the national level in 1968 into the United Methodist Church, at which time this church became the Christ United Methodist Church. Despite its alterations, the church retains enough of its 1883 form to convey its sense of New Castle's late nineteenth century history.

The social history of New Castle is reflected by the building and expanding of three lodge buildings in the district at the end of the last century. The Odd Fellows Fidelity lodge No. 59 was organized in 1848 in New Castle, and had 84 members in 1871. In 1875 they built a two story lodge hall at 200 South Main (photograph 3). Around 1895, third and fourth floors were added to the building, which accommodated a large and lavish lodge room, banquet hall and kitchen facilities. The Odd Fellows last met in the building in the 1960's and no longer exist. The Masons New Castle No. 91 was founded in 1850 and met in the Murphey Building until they built their Masonic Temple at 1201-09 Race in 1892 (photograph 4 and 5). The Masons have continued to use the building since that time, however, they are currently building a new facility out in the country, and the Masonic Temple is for sale. The Crescens Lodge No. 33 of the Knights of Pythias was organized in 1872, also met for a time in the Murphey Building, and built their building at 1202 Broad in 1891 (photograph 15). The group continues to meet and is currently renovating the inside of the building.

All three buildings are also important to New Castle's commercial history, as they all have retail space on their ground floors. The Wright Brothers Grocery was located on the ground floor of the Knights of Pythias Building from 1885 to 1895, where Phelp's Hardware and Implement Store, Yates Furniture and Undertakers, an American Express office, gas company office, and drug store have all also been tenants. A furniture store currently occupies the ground floor (photograph 15). A grocery, bakery, restaurant, and purveyor of "Queensware", a type of pottery, were nineteenth century tenants of the Odd Fellows Building, while a drugstore was the most recent retail tenant (photograph 3). The Masonic Temple had medical and professional offices on the first floor, Mason's meeting rooms and lodge rooms on the second and third floors, but also contributes to the district's association with recreation as the location of the Alcazar Opera

United States Department of the Interior
National Park ServiceNational Register of Historic Places
Continuation SheetSection number 8 Page 8 New Castle Commercial Historic District

House (photograph 4 and 5). The 850 seat theatre was located on the second floor of the rear portion of the building (photograph 5), and operated from at least 1894 until fire destroyed the theatre in 1926. A few years before the fire, the theatre was converted to use as a moving pictures theatre, and was known as the Grand Theater in 1924. The Masons remodelled the theatre area for their own use in 1927 and the area below the theatre became an automobile sales and service business for a time.

Movie theatres were located in several other buildings in the district including the west addition to the first Jennings' Building at 1331 Broad (photograph 23) between 1914 and 1949, the rear, lower level of the third Jennings' Building at 1502 Broad (photograph 32), the second floor of the buildings at 1409 and 1415 Broad (photographs 25 and 26), and two Grand Theaters. The Grand Theater that replaced the Alcazar in the Masonic Temple (photograph 5), and the Grand Theater that was formerly at 123 North Main (photograph 19), discussed below, were both movie houses. Theaters played an important role in the recreation of the community and the vitality of the downtown area. Of the many theatres that once were found downtown, only one, the Castle at 221 South Main, just south of the district, remains.

With the turn of the century New Castle experienced a tremendous growth spurt, which is evident by its increased population, commercial buildings, and manufacturing concerns. By 1900, the population had climbed to over three thousand, and then within ten years it tripled. The courthouse almost doubled in size with an addition in 1905. New Castle was touted as "The City of Roses, Pianos and Automobiles" in 1907 and therein lies the reason for the city's rapid growth. In 1904, New Castle businessmen were successful in enticing Jonathan Maxwell and Benjamin Briscoe of Tarrytown, New York to locate their automobile factory on a site southeast of the downtown. In 1907, the largest facility of its kind in the world, the plant was completed and immediately employed approximately 2500 people. The "Maxwell" was built and assembled at this plant until 1911, when it became a parts plant to support the main Maxwell Briscoe Co. factory in Detroit. In 1920, Walter Chrysler reorganized the company, and in 1925, he introduced the Chrysler name at the New Castle plant. Over 6000 people were employed during World War II, but this number receded to 3500 employees by 1979. Today, around 1000 employees work in the original brick factory building, still in use at 1817 I Avenue, which has many alterations and additions.

Other automobiles produced in New Castle included: the first in the county, the "Ideal" by William F. Byrket in 1901; the "Upton" by the Upton Pump Co. in 1903; the "Whiteside" by the Whiteside Commercial Car Co. in 1903; the "Arden" by the Arden Motor Co. in 1909; the "Lawter" by the Safety Shredder Co. in 1909 and 1910; and the "Universal" by the Universal Motor Co. in 1910.

United States Department of the Interior
National Park Service

National Register of Historic Places
Continuation Sheet

Section number 3 Page 9 New Castle Commercial Historic District

Jesse French and Albert Krell were both in the piano business when they joined forces to form the Krell-French Piano Co. in 1902, which manufactured up to 100 pianos a day in a factory building built that year adjacent to the Maxwell Briscoe plant. Krell resigned a few years later, but the Jesse French & Sons Piano Co. continued to build pianos and player pianos until 1952. In the early years of the company, there was a piano salesroom in the Bradway Building at 1211-15 Race, then known as the Maxim Building (photograph 4). The original, brick factory building still stands and is currently being used by a moving wall manufacturing company.

The soil in New Castle was said to be good for the cultivation of roses and indeed, according to one source, there were five commercial greenhouses cultivating roses and other flowers in 1907. Heller Brothers, Weiland & Co., Coatsworth & Benthey, William Dittman, and L.A. Jennings together employed about 100 men. The L.A. Jennings Greenhouses and the South Park Floral Co. were both established by 1896, and operated until at least 1908 and 1914 respectively. At least eight other companies, one of which later split into two, were in operation from at least 1901 to 1949. Once known as "the Rose City", New Castle claims the birthplace of the American Beauty rose.

New Castle could have been the city of roses, pianos, automobiles and kitchen cabinets. A much sought after Hoosier Kitchen Cabinet is now considered to be an antique of some value among collectors. The Hoosier Manufacturing Company was the largest manufacturer of kitchen cabinets during its operation in New Castle from 1900 to 1942. The company's promotional publication, "Hoosier Ginger", was sent to furniture merchants across the country in an effort to sell the cabinets that were billed as the newest and most efficient kitchen furniture available.

There were at least fifty other manufacturing enterprises in the first half of this century, two of which were located within the district boundaries. The Kumfort Garment Company, manufacturer of play suits was located at 1124 Broad in a building of fireproof, concrete construction built in 1918 (photograph 14). An auto top factory located at 1408-14 Fleming between 1914 and 1924 in a building of similar, fireproof, concrete construction (photograph 35). Of the many businesses outside of the district boundaries, two of the most longstanding were the Pan American Bridge Co., in existence from 1902 to 1965, and the Indiana Rolling Mill Co., established by 1908 and which evolved into the Borg-Warner Corp. and the Ingersoll Steel Division, which still operates west of downtown. The population of New Castle grew together with the growth in industry, climbing to 14,458 in 1920, 16,620 by 1940, and 18,271 by 1950. The population has hovered around 20,000 since 1960.

United States Department of the Interior
National Park ServiceNational Register of Historic Places
Continuation SheetSection number 8 Page 10 New Castle Commercial Historic District

Historic resources associated with the sales and service of automobiles are concentrated at either end of the district on Broad in the 1100 and 1500 blocks. Williams Motor Sales, the Redd Herman Auto Co., a used car lot, and Lee Chevrolet were all located on the south side of Broad at 1111, 1115, 1119, and 1121, respectively, in 1940 (photographs 9 and 10). The United Motor New Castle Auto Showroom preceded Lee Chevrolet at 1121 Broad as early as 1911 (photograph 10). The Crow Sales Co. was organized in 1931, sold cars initially at 1513 Broad (photograph 31), then moved to 1124 Broad (photograph 14). The Newby-Paul Car Dealership was one of Henry County's oldest when it closed in 1981. The Newby Motor Co. opened in 1902 as a bicycle shop, was purchased by Ivan Paul in 1927, and located at 1517 Broad in 1931 as the Newby-Paul Motor Co. (photograph 31). The W.T. Baker Auto Co. was located at 1513 Broad in 1917, and the McGath Auto Company occupied the same building in 1920 (photograph 31). The Overland New Castle Auto Dealer was located at the site of 123 North Main in 1917, and the Taylor Motor Co. sold Studebakers in the current building at 123 North Main in 1940 (photograph 19).

There were filling stations on both the northeast and southeast corners of Broad and Eleventh Streets, on the southeast corner of Broad and Fifteenth Streets, and north of 1338 Broad at the southwest corner of Fleming and Fourteenth Streets. All four structures are still standing. Only one, at 1102 Broad (photograph 12), retains enough integrity to be considered contributing to the district, although the station north of 1338 Broad was incorporated into an addition onto 1338 Broad, a contributing bank building discussed below, and its former shape is apparent. The noncontributing 1101 and 1501 Broad Street buildings do retain their characteristic shape and small size despite severe alterations (photograph 8). There were also several auto related stores in the 1100 and 1500 blocks of Broad, as there are today.

Commercial buildings built since the turn of the century in the district include the Bradway Building, at 1211-15 Race, originally the Maxim Building, built in 1902 by J. Ward Maxim (photograph 4). Maxim made his fortune in New Castle with his shovel factory described above. The five story building had retail spaces on the ground floor, apartments on the upper floors, and the Red Men's lodge on the fourth floor.

The former Hotel Dengler was built between 1901 and 1908 at 1214 Broad (photograph 16). This three story, Classical Revival, brick structure was known as the Ward Hotel in 1911, the City Hotel in 1917, and the Bess Hotel in 1940. The Imperial Hotel, one block away at 1318 Broad (photograph 16), appeared around 1905 when an 1880's structure, once known as the Central Hotel, received a new facade. This building was still a hotel until 10 or 12 years ago.

United States Department of the Interior
National Park ServiceNational Register of Historic Places
Continuation SheetSection number 8 Page 11 New Castle Commercial Historic District

Five other large commercial buildings were built between 1901 and 1908. The two story, 1411 Broad was built in 1902 and housed a 10 cent store and a dry goods store (photograph 26). Four three story buildings, 1122 Broad (photograph 13), 1415 Broad (photograph 26), 1421 Broad (photograph 27), and the Colonial Building at 200-06 South 14th Street (photograph 24), all housed a variety of commercial establishments on the first floor and offices above. The 1421 Broad building was known as the Koons-Bond Building and Brown Apartments in 1940. In 1911, architect Charles Taylor, about whom little is known, had his office on an upper floor of the building.

Five large commercial buildings were built between 1906 and 1914. The former Fox Funeral Home was located at 1116 Broad (photograph 13) for many years. The terra cotta, Chicago Commercial style building at 1417 Broad (photograph 26), the Classical Revival style building at 1430 Broad (photograph 33), the Union Block at 210-218 South 14th Street (photograph 24), and 1431 Broad (photograph 27), location of a furniture store, and in 1914, the Loyal Order of Moose lodge on an upper floor, are included in this group. The Union Block was an interim home to the New Castle Courier Times before moving across the street in the late 1950's. It was also the meeting place of the Elks lodge and the American Legion at different times, and the location of Montgomery Ward & Company in 1940. One building built between 1914 and 1924, 105 South 12th Street (photograph 6), is a three story commercial building that occupies the entire west side of the courthouse square, originally had many stores on its ground level and is now county offices.

Two bank buildings built in 1923 were new homes for previously existing banks. The First National Bank was organized in 1865, and built the two story, Beaux Arts building at 1338 Broad (photograph 21 and 38), where it is now known as Bank One. The Citizens State Bank organized in 1873 and built its new home at 1238 Broad originally in 1923 (photograph 37), and expanded the building later (photograph 18).

Downtown New Castle continued to be an important commercial center for the county well into the 1940's, (and beyond) as evidenced by the full use of its commercial buildings (photograph 38). Two one story buildings were built around 1935 at the southeast corner of Broad and Fourteenth Streets. The S.S. Kresge store was located at 1401 Broad in a sleek, Art Moderne style building (photograph 25 and 38). Its neighbor at 1405 Broad is contemporary and shares the modern facade. The Kresge store is still a discount store today, and both retain their modern style appearance. The former Coca-Cola Bottling plant at 123 N. Main was originally constructed between 1901 and 1908 as the "Coliseum Skating Rink" (photograph 19). The rink was home to the New Castle Roller Polo team from 1908 to 1909, which was disbanded after the building was converted to the Grand Theatre in 1909 and the semi-professional team had nowhere to skate. By 1924, the building had been adapted for the sale and repairing of automobiles, and in 1940 the Taylor Motor Co. was selling Studebaker's at this

United States Department of the Interior
National Park ServiceNational Register of Historic Places
Continuation SheetSection number 8 Page 12 New Castle Commercial Historic District

address. In 1941 the building was remodeled, with its present Art Moderne look, for use as the Coca-Cola Bottling Company of New Castle. The building has been vacant since 1985, when the company went out of business.

The district is also significant for its embodiment of the distinctive characteristics of several architectural styles. The earliest style represented is the Greek Revival. Although the 1849 Murphey Building at 100 South Main is the only example of this style in the district (photograph 2), earlier, wood frame, commercial buildings were built in this style in the district. One such building stood at the southeast corner of Broad and Fourteenth Streets, where 1401 Broad now stands (photograph 25). The Greek Revival aesthetic is evident in the pared-down simplicity of the Murphey Building's plan and composition. Many details of the style remain, such as the plain brick facade, regular, rectangular window openings, and the modified temple front with low pitch pediment and full entablature of wood. Although currently vacant and in need of much repair, the building successfully portrays the earlier commercial era of downtown New Castle. A planned rehabilitation by the City of New Castle promises to add significantly to the building's stature among the district's commercial buildings.

The Henry County Courthouse is an outstanding example of the Italianate architectural style with elements of the Second Empire and Renaissance Revival styles (photograph 1). The original eastern half of this brick structure with limestone trim and a pressed metal cornice, was designed by Isaac Hodgson and completed in 1869. In 1905, a large addition was added to the west facade of the Henry County Courthouse in a style duplicating the original. The primary, character defining elements of the building are its dressed limestone foundation, limestone quoins, window and door surrounds, string courses and statuary, its tower with mansard roof, and the pressed metal cornice. The grandeur of its style and eloquence of detail are well suited to the building's function as the centerpiece of county governmental activity. The building is well maintained with only minor changes to the physical fabric, which allows the building to retain its integrity as a major contributing structure in the district.

There are more than a dozen commercial buildings in the district with elements of the Italianate architectural style, built in the 1870's and 1880's. The most outstanding example is the L.A. Jennings Building at 1331-1337 Broad Street, originally built in 1877, which is most notable for its cast iron facade (photograph 23). The arcaded facade with bracketed cornice is cast in the likeness of stone decoration and covers the upper two stories. Quoins, fluted pilasters, Corinthian capitals, projecting window hoods, and floral and shell motifs in relief, are among the decorative items represented in the ornate facade. Tall, narrow, windows with segmental or round arched heads run across the front of the facade on the upper floors and decorative string courses separate each of the floors.

United States Department of the Interior
National Park ServiceNational Register of Historic Places
Continuation SheetSection number 8 Page 13 New Castle Commercial Historic District

The Italianate Commercial style dominates the 1300 odd block of Broad Street with a series of brick buildings west of the Jennings Building between 1317 and 1327 Broad, which were built in 1872 (photograph 22). These buildings feature cast iron bracketed cornices, some broken by semi-circular arches in the center and some with urns on top, projecting decorative window hoods, tall, narrow windows, and cornice molding above the ground level. The ground floor storefronts have suffered various alterations throughout the years, but the buildings have maintained the basic overall proportions and scale. As an intact block, this group of Italianate commercial buildings, provides an unusual display of the former pervasiveness of the style.

Other Italianate commercial buildings are scattered throughout the district and exhibit many distinctive characteristics of the style. Brick buildings with pressed metal cornices and window hoods, tall, narrow windows, and evidence of former cast iron storefront systems are found at the Odd Fellows Building at 200 South Main, 208 South Main (photograph 3), the former Courier Printing Building at 1408 Broad (photograph 34), and 1125, 1129, 1332, and 1400 Broad (photographs 11, 21, 34 respectively). The building at 1129 Broad, is one of the few buildings in the district which retains much of its original storefront. Elements of the original cast iron storefront include piers, which divide tall, narrow display windows with low bulkheads, doors with transoms, and a bracketed cornice.

The district has one example of the Romanesque Revival style at 110 South Main, an early commercial building, built c. 1870 (photograph 2). A brick, monochromatic facade, second floor arcade defined by a pronounced archivolt trim around tall, narrow, shuttered windows with segmental arched heads, and a corbel table, are all elements that identify this structure with the Romanesque Revival style.

The district derives significance by the presence of three lodge halls, which represent a distinct building type. One of the three, the 1875/c. 1895 Odd Fellows Building, at 200 South Main, is an Italianate commercial style building, described above (photograph 3). The other two, the 1891 Knights of Pythias Building at 1202 Broad (photograph 15), and the 1892 Masonic Temple at 1201-09 Race (photograph 4), are both Victorian Romanesque in style. This style is evident by the variety of surface textures and window sizes, arches and belt courses of stone contrasted with brick facades, and large building mass. All three buildings are large, three story, brick structures with highly decorative detailing on the exterior, and specific room configurations and functions on the inside. The Odd Fellows Building attained its current form after a third and fourth floor were added around 1895, contemporary with the construction of the other two lodge buildings.

United States Department of the Interior
National Park ServiceNational Register of Historic Places
Continuation SheetSection number 8 Page 14 New Castle Commercial Historic District

All three buildings have retail spaces on the ground level, separate entrances to second floor spaces, and large lodge rooms on the uppermost level. The lodge rooms are serviced by anterooms and a balcony. The Odd Fellows and Knights of Pythias lodges both have two story height lodge halls with kitchens and banquet rooms stacked above anterooms to one side. Both also have balconies in the lodge halls that are accessed from the banquet rooms. The kitchen and banquet room at the Masonic Temple are removed from the lodge room. All three buildings have interior and exterior features that identify the building with its lodge function. The lodge name appears on the cornice of the Odd Fellows Building and Masonic Temple, and in the floor tiles at the entrance to the Knights of Pythias Building. Murals depicting fraternity themes adorn the walls of the Knights of Pythias' lodge hall, leaded, colored glass windows depicting fraternity themes formerly adorned the south wall of the Odd Fellows lodge hall, and carved wood furniture with Masonic themes are found in the Masonic lodge room.

The former United Brethren Church at 126 North 14th Street was originally built in 1863, remodelled in 1883, and shows Classical Revival influence (photograph 36). It has a pedimented gable front, brick tower, which had an arcaded belfry dating from the 1883 changes, pedimented entrance porticoes with simple Doric columns, and round arched window openings with leaded, colored glass panes and fanlight transoms.

The most prolific style of the early twentieth century represented in the district is the Classical Revival. Several multi-story buildings built around 1905 are examples of this trend, including the "Hotel Dengler" at 1214 Broad (photograph 16), the Bradway Building at 1211-15 Race Street (photograph 4), 1122, 1415, and 1419-23 Broad, and 200-06 South 14th Street (photographs 13, 26, and 24 respectively). Classical features such as dressed stone bases, stone belt courses, brick pilasters with Ionic capitals, paired windows, leaded glass, fan light transoms, flat arch lintels with pronounced keystones, and pressed metal cornices with corbelled brick brackets and full entablatures, adorn the brick facades. Most of these buildings also have the original storefront proportions and some degree of original fabric at the ground level.

Other buildings in the district, built during this same period, have less dramatic Classical Revival detail and display only simple brick facades with some geometric patterning and stone accent blocks, including the Imperial Hotel Building at 1318 Broad (photograph 20), 1310 and 1411 Broad, 210-12 South Main, and 116 South 15th Streets (photographs 20, 26, 24, and 30 respectively). Less ornate Classical Revival buildings were built in the district into the 1920's, including 1116 and 1430 Broad, and 105 South 12th Street (photograph 13, 33, 6 respectively). The use of glazed brick and terra cotta as decoration on these buildings signalled the incorporation of technical advances in construction technique with a familiar style.

United States Department of the Interior
National Park ServiceNational Register of Historic Places
Continuation SheetSection number 8 Page 15 New Castle Commercial Historic District

The sales and service of automobiles demanded a new property type as cars became available for public consumption. Three buildings built for this purpose in New Castle, made use of Classical forms and detailing: 1121 Broad, built between 1901 and 1908 (photograph 10), 1111 and 1513 Broad, both built around 1920 (photographs 9 and 31). Brick facades with stone detailing, pilasters with stone bases and capitals and a stone cornice are elements found among these three buildings. All three formerly had large open bays at storefront level for the display of automobiles and an open rectangular plan with garage door openings at the rear for easy access.

The Chicago Commercial style is used with four buildings in the district built between 1908 and 1916. Defining characteristics include wider windows, grouped in three's with smaller windows flanking a wide window, narrow vertical piers, and terra cotta facades. The buildings at 1220 and 1417 Broad are both clad in white, glazed terra cotta (photograph 17 and 26). The brick buildings at 1431 Broad and 210-18 South 14th Street both have upper floors of multiple bays with groups of narrow windows flanking wider windows (photograph 27 and 24).

The district's two examples of Beaux Arts Classicism are two bank buildings at 1238 and 1338 Broad, built in 1923 (photographs 37, 18, 38, and 21). Both are stone clad brick structures with dressed, stone foundations, central entrances, pilastered facades and parapets, enriched entablatures, and pronounced cornices. Despite alterations to windows and the interiors, both bank buildings continue to exude the sense of grandeur and stability derived from their architectural style, which was purposely and appropriately chosen for their function.

Three former manufacturing facilities are found in the district at 200 South 15th, the former S.P. Jennings and Sons Handle Factory complex, originally built around 1890 (photographs 29 and 30), 1124 Broad, the former Kumfort Garment factory, built in 1918 (photograph 14), and 1408-14 Fleming, a former auto top factory, built around 1920 (photograph 35). The first is a simple brick structure, which originally had a gabled front, and which has brick additions dating from around 1910 and 1930. The other two are reinforced concrete structures with pilastered walls, steel posts, large open plans and concrete floors. The former handle factory was used for many years as a lumber supply business, but is currently vacant and endangered by a proposed development that would involve its demolition. The former auto top factory was subsequently used as a parking garage and is currently a used furniture store. The Kumfort Garment factory building became an auto showroom and subsequently a tire business, which it remains today.

One example of Art Moderne influence is found at the former Coca-Cola Bottling Building at 123 North Main, which was remodelled to its current appearance in 1941 (photograph 19). Its main features are a slightly projecting, off center, stone, entrance bay with a two story opening, recessed in a stepped back

United States Department of the Interior
National Park ServiceNational Register of Historic Places
Continuation SheetSection number 8 Page 16 New Castle Commercial Historic District

surround, a yellow brick facade with polished, black granite clad foundation, and rounded stone parapet coping. An overall sleekness of design is continued on the interior with terrazzo floors, wood panelled offices, a polished marble lobby, and glazed brick walls throughout the work areas. The sleekness of the Art Moderne is continued with two commercial buildings at 1401 and 1405 Broad, built around 1940 (photographs 38 and 25). The wide open, glass and aluminum storefront, the high parapet and side walls of rose colored, porcelain enamel panels, the low bulkhead and foundation of black, porcelain enamel panels, and the curved corners, give these buildings their clean, modern appearance.

The noncontributing buildings in the district fall into two categories: buildings built within the period of significance that have lost substantial integrity due to alterations; and buildings built since the period of significance. For the most part, these buildings are scattered throughout the district and do not affect the district's ability to convey a sense of history and significance. One group of noncontributing buildings, those built during the 1880's and 1890's, but which have corrugated metal cladding over their upper stories, are concentrated along the 1300 odd and 1400 odd blocks of Broad (photographs 20, 21, and 34). Historic photos exist that show what was under the metal cladding, and some physical evidence exists to verify their age, but in their current state they are noncontributing (photograph 36). Future removal of the cladding may allow these buildings to be contributing.

Much storefront level renovation has taken place throughout the years in the district. Many of the changes are inappropriate to the character of the district, but do not collectively detract from the district's overall significance. Currently, the majority of upper floor spaces in the district are vacant, and a fair number of ground level spaces are vacant or underused. A few storefront rehabilitation projects have been undertaken recently, which have established a sense of momentum for the district's revitalization. Preservation planning activity is underway with the Ball State University, Community Based Projects program and the recently established New Castle Heritage in Progress group. The City of New Castle is hoping to sustain this momentum with a rehabilitation of the Murphey Building at 100 South Main, currently in the planning stages.

United States Department of the Interior
National Park Service

National Register of Historic Places Continuation Sheet

Section number 9 Page 1 New Castle Commercial Historic District

1871 Bird's Eye View of New Castle, Indiana. C.H. Vogt, Lith. Drawn and Published T.M. Fowler and H.H. Bailey.

1884 Bird's Eye View of New Castle, Indiana. Boston: O.H. Bailey & Co., Publishers.

Beckner, Dewese T., John J. Harter, R. Thomas Mayhill, and Richard P. Ratcliff. The Henry County, Indiana Sesquicentennial Booklet, From Then 'Til Now, 1822-1972. New Castle, Indiana: Community Printing Inc., 1972.

Bond, William Clement. A History of New Castle, Indiana. 1972.

Heller, Herbert L. History of New Castle, Indiana. Five Volumes. New Castle, Indiana: Henry County Historical Society and the City Schools of New Castle.

History of Henry County, Indiana. Chicago: Inter-State Publishing Company, 1884.

New Castle City Directories. 1901 - 1940.

Pleas, Elwood. Henry County 1821-1871 Past and Present. New Castle, Indiana: Pleas Brothers, 1871.

Sanborn Fire Insurance Maps, New York. 1886 - 1949.

United States Department of the Interior
National Park ServiceNational Register of Historic Places
Continuation SheetSection number 10 Page 1 New Castle Commercial Historic District

Verbal Boundary Description

Beginning at the intersection of the east curbline of Eleventh Street and the north curbline of Race Street, proceed east to the east curbline of Twelfth Street. Follow the east curbline of Twelfth Street south to the north curbline of Central Avenue, then proceed east along the north curbline of Central Avenue to the east property line of 214 South Main Street. Proceed north along the east property lines of 214 and 210 South Main Street, east along the south property line of 206 South Main Street, and north along the east property lines of 206 and 200 South Main Street, crossing Race Street, to the north curbline of Race Street. Follow the north curbline of Race Street to the east curbline of Fourteenth Street, then proceed south along the east curbline of Fourteenth Street to the north curbline of Central Avenue. Follow the north curbline of Central Avenue to the east property line of 210-218 South Fourteenth Street, then proceed north along the east property line of 210-218 South Fourteenth Street, east along the south property line and north along the east property line of 200 South Fourteenth Street, crossing Race Street, to the north curbline of Race Street. Proceed east along the north curbline of Race Street to the east curbline of Fifteenth Street. Proceed south along the east curbline of Fifteenth Street to a point intersected by a line that is two feet south of the south elevation of the building at 218 South Fifteenth Street. Proceed east along this line to a point intersected by the west property line of 1517 Broad Street, then proceed north to the south property line of 1517 Broad Street. Proceed east along the south property line of 1517 Broad Street to the west property line of the Norfolk & Western Railroad. Follow this boundary to the south curbline of Broad Street.

Proceed west along the south curbline of Broad Street to a point intersected by the east property line of 1502 Broad Street. Cross Broad Street and continue north along the east property line of 1502 Broad Street and 112 North Fifteenth Street. Proceed west along the north property line of 112 North Fifteenth Street, crossing Fifteenth Street to the west curbline of North Fifteenth Street. Proceed north along the west curbline of North Fifteenth Street, then west along the south curbline of Fleming Street, to a point intersected by the east side of the building at 1408-14 Fleming Street. Cross Fleming Street and continue north along the east side of the building at 1408-14 Fleming to the south curbline of Vine Street. Proceed west along the south curbline of Vine Street to the east curbline of Fourteenth Street. Proceed south along the east curbline of Fourteenth Street to the south curbline of Fleming Street. Proceed west along the south curbline of Fleming Street, crossing Fourteenth and Main Streets, to the west curbline of Main Street. Proceed north along the west curbline of Main Street, and west along the south curbline of Vine Street to the west property line of 123 North Main Street. Proceed south along the west property line of 123 North Main Street, crossing Fleming Street, to the south curbline of Fleming Street. Proceed west along the south curbline of Fleming

United States Department of the Interior
National Park Service

**National Register of Historic Places
Continuation Sheet**

Section number 10 Page 2 New Castle Commercial Historic District

Street, crossing Twelfth Street, to the west property line of 1116 Broad Street. Proceed south along the west property line of 1116 Broad Street, and west along the north property line of 1102 Broad Street, to the east curblineline of Eleventh Street. Proceed south along the east curblineline of Eleventh Street, crossing Broad Street, to the south curblineline of Broad Street. Proceed west along the south curblineline of Broad Street to the east curblineline of Eleventh Street, then proceed south to the point of beginning.

Boundary Justification

A survey was conducted to determine the boundaries, which were further refined after a site visit by SHPO staff. The described boundaries of the New Castle Commercial Historic District encompass the significant concentration of nineteenth and early twentieth century commercial and governmental buildings in downtown New Castle. This includes the courthouse and the area around the courthouse square, and buildings along the main commercial thoroughfare: Broad Street. To the north, west, and south of the district, property types are largely single family residential dwellings. The Norfolk & Western Railroad tracks form a logical boundary on the east, and open space and warehouse or industrial property types also characterize the area to the east of the district. Immediately to the north and south of the district are areas of surface parking lots and noncontributing commercial buildings. The western boundary is strongly defined by Eleventh Street, to the west of which are residences.

United States Department of the Interior
National Park Service

National Register of Historic Places
Continuation Sheet

Section number Photo-
graphs Page 1 New Castle Commercial Historic District

PHOTOGRAPH INFORMATION

The following information is the same for all photographs:

New Castle Commercial Historic District
New Castle, Henry County, Indiana
Nancy Hiestand
Community Based Projects, Ball State University, Muncie, Indiana

1. Henry County Courthouse; January 3, 1991; East and north elevations of courthouse, camera facing southwest.
2. Murphey Building, 100 South Main Street, and 110 and 112 South Main Street; January 3, 1991; North and west elevations of the Murphey Building, and west elevations of 110 and 112 South Main Street, camera facing southeast.
3. Odd Fellows Building, 200 South Main Street, and 206, 210, and 214 South Main Street; October 30, 1990; North and west elevations of the Odd Fellows Building, and west elevations of 206, 210, and 214 South Main Street, camera facing southeast.
4. Bradway Building, 1211-15 Race Street and Masonic Temple, 1201-09 Race Street; November 4, 1990; North elevation of the Bradway Building, and the north and west elevations of the Masonic Temple, camera facing southeast.
5. Masonic Temple, 1201-09 Race Street; November 4, 1990; West elevation, camera facing northeast.
6. 105 South 12th Street; November 4, 1990; South and east elevations, camera facing northwest.
7. Race Street elevation of 1111 and 1115 Broad Street, 1120 Race Street, and the Race Street elevation of 1121 Broad Street; January 18, 1991; South elevations and west elevation of 1115 Broad Street, camera facing northeast.
8. 1101 Broad Street and 1102 Race Street; November 4, 1990; North and west elevations, camera facing southeast.
9. 1105, 1111, and 1115 Broad Street; January 18, 1991; North elevations and west elevation of 1105 Broad Street, camera facing southeast.
10. 1121 Broad Street; November 17, 1990; North elevation, camera facing south.

United States Department of the Interior
National Park ServiceNational Register of Historic Places
Continuation SheetSection number Photo-
graphs Page 2 New Castle Commercial Historic District

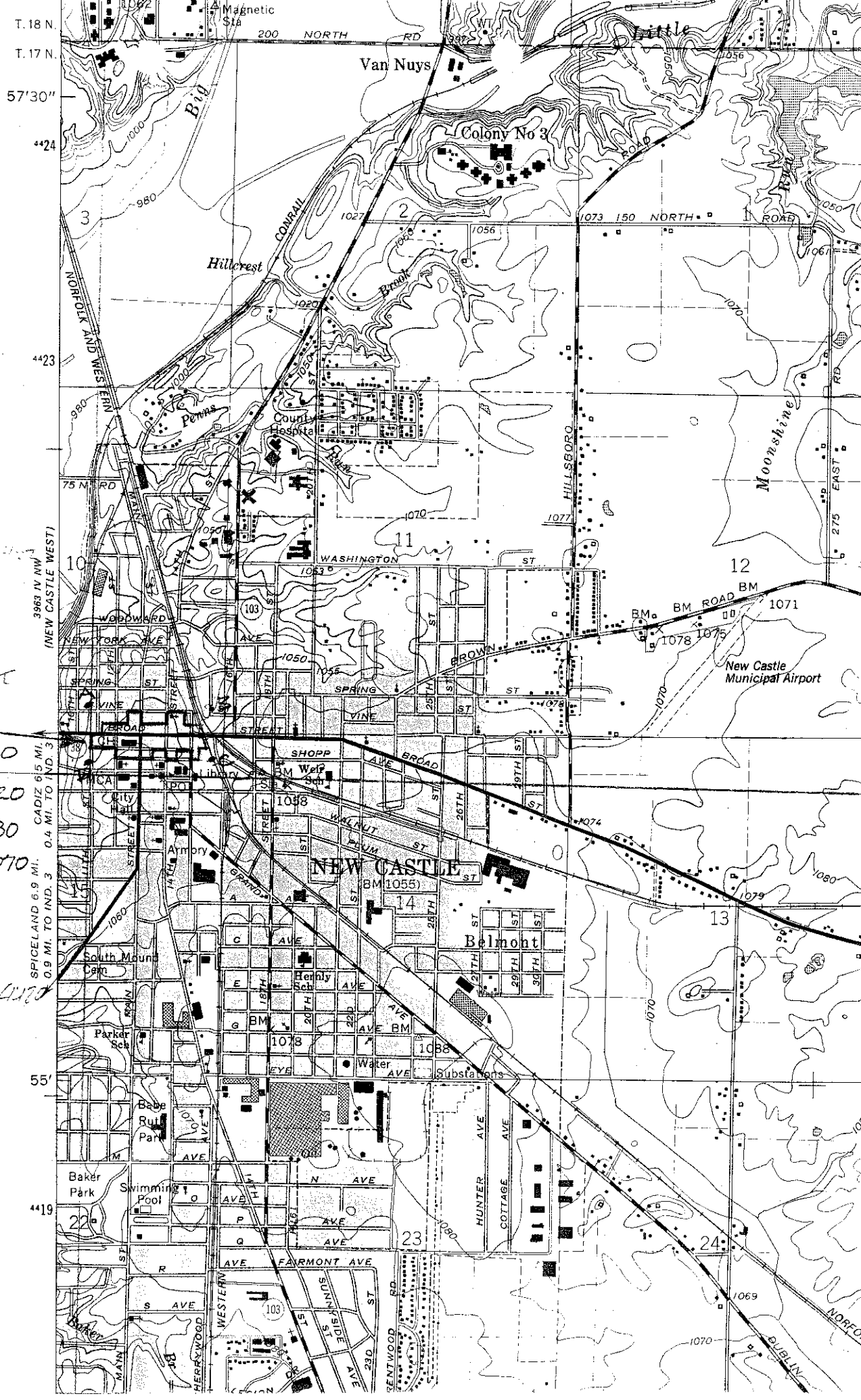
-
11. 1125 and 1129 Broad Street, and 105 South 12th Street; November 4, 1990; North elevations, camera facing southeast.
12. 1102 Broad Street; November 17, 1990; Southwest and southeast elevations, camera facing northwest.
13. 1116 and 1122 Broad Street; November 4, 1990; South elevations, camera facing north.
14. 1124 and 1130 Broad Street, and 111 North 12th Street; January 18, 1991; South elevations of 1124 and 1130 Broad Street, and east elevations of 1130 Broad Street and 111 North 12th Street, camera facing northwest.
15. Knights of Pythias, 1202 Broad Street; January 18, 1991; West and south elevations, camera facing northeast.
16. 1214 Broad Street; November 17, 1990; South elevation, camera facing north.
17. 1220 Broad Street; November 17, 1990; South elevation, camera facing north.
18. 1222 and 1238 Broad Street, Citizen's State Bank Building; January 18, 1991; South elevations and east elevation of Citizen's State Bank Building, camera facing northwest.
19. 123 North Main Street; November 18, 1990; East elevation, camera facing west.
20. 1306-08, 1310, 1318, and 1322 Broad Street; January 18, 1991; South elevations, camera facing northeast.
21. 1326, 1332, 1334, and 1338 Broad Street, the First National Bank Building; January 18, 1991; South elevations and east elevation of the First National Bank Building, camera facing northwest.
22. 1300 odd block of Broad Street; October 30, 1990; North elevations, camera facing southwest.
23. Jennings Building, 1331-37 Broad Street; January 18, 1991; East and north elevation of the Jennings Building, camera facing southwest.
24. Colonial Building, 200-06 South 14th Street, 208 and 210-18 South 14th Street; January 18, 1991; North and west elevation of the Colonial Building, and west elevations of 208 and 210-18 South 14th Street, camera facing southeast.
25. 1400 odd block of Broad Street; January 18, 1991; North elevations, camera facing southeast.

United States Department of the Interior
National Park Service

National Register of Historic Places Continuation Sheet

Section number Photo-
graphs Page 3 New Castle Commercial Historic District

26. 1417, 1415 and 1411 Broad Street January 3, 1991 North elevations, camera facing southeast.
27. 1400 odd block of Broad Street; January 18, 1991; North elevations, camera facing southwest.
28. Race Street elevations of 1411-1417 Broad Street; January 3, 1991; South elevations, camera facing northwest.
29. 200 South 15th Street; November 17, 1990; West elevation, camera facing east.
30. 116, 200, and 218 South 15th Street; January 18, 1991; West elevations, camera facing southeast.
31. 1519-23, 1517, 1513, and 1505 Broad Street; January 18, 1991; North elevations, camera facing southeast.
32. 1502 Broad Street; January 18, 1991; West and south elevations, camera facing northeast.
33. 1400 even block of Broad Street; January 18, 1991; South elevations and east elevation of 1430 Broad Street, camera facing northwest.
34. 1400-1416 Broad Street; January 18, 1991; South elevations and west elevation of 1400 Broad Street, camera facing northeast.
35. 1408-14 Fleming Street; November 18, 1990; South elevation, camera facing northeast.
36. United Brethren Church, 126 North 14th Street; January 18, 1991; North and west elevations, camera facing southeast.
37. Citizens State Bank Building, 1238 Broad Street; January 20, 1924; South and east elevations, camera facing northwest.
38. 1300 and 1400 blocks of Broad Street; 1949; streetscape, camera facing northwest.



NEW CASTLE
 COMMERCIAL
 DISTRICT
 HENRY COUNTY,
 INDIANA

- A: 16 639 000 4421320
- B: 16 639 550 4421320
- C: 16 639 550 4421080
- D: 16 639 000 4421070

3963 (V NW)
 (NEW CASTLE WEST)
 SPICELAND 6.9 MI.
 CADIZ 6.5 MI.
 0.9 MI. TO IND. 3
 0.4 MI. TO IND. 3

4422

55'

4419

22

23

24

VINE STREET

FLEMING STREET

BROAD STREET

RACE STREET

CENTRAL AVENUE

N. 11th

N. 12th

N. MAIN

N. 14th

N. 15th

S. 11th

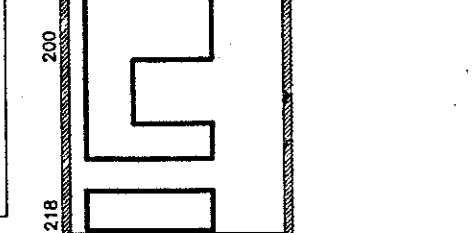
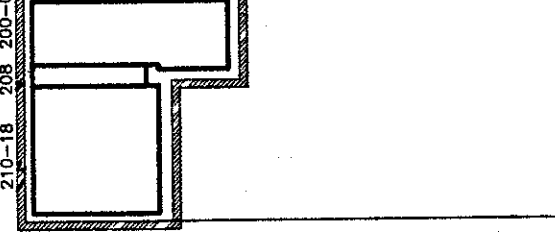
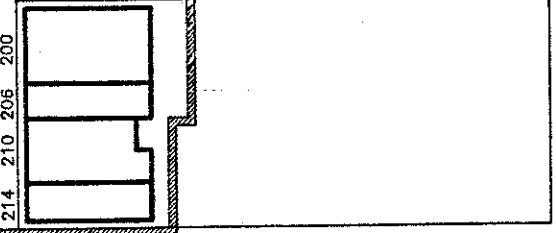
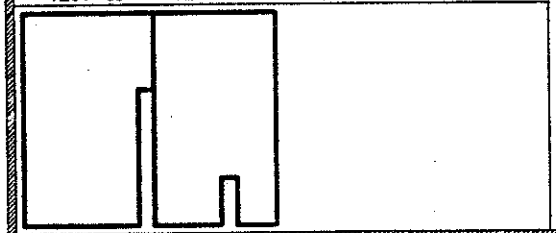
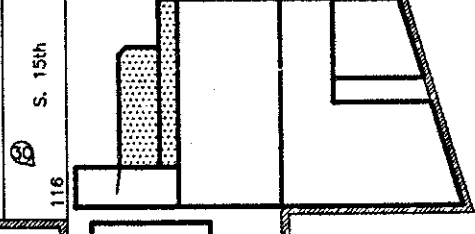
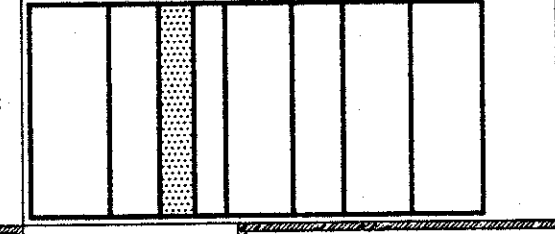
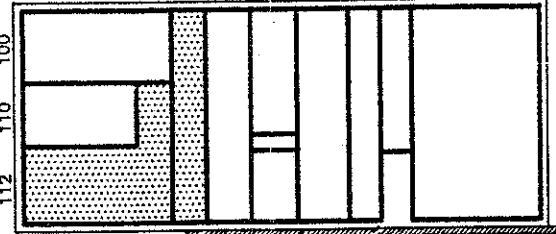
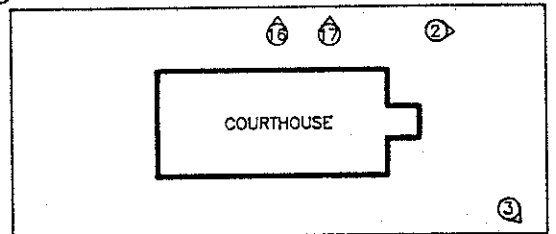
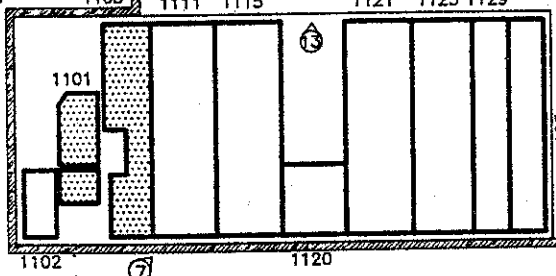
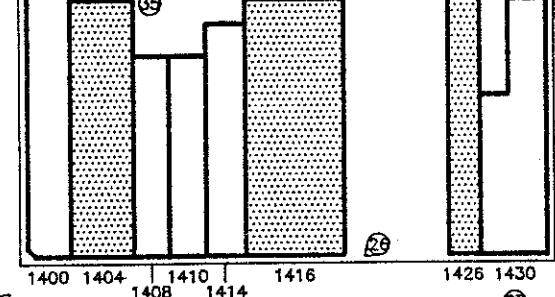
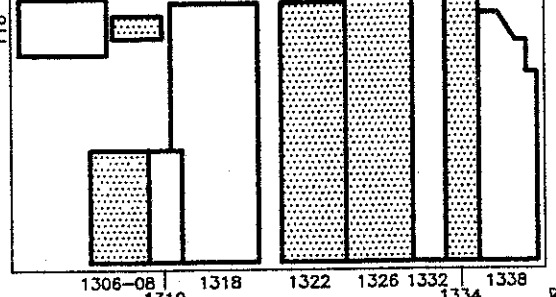
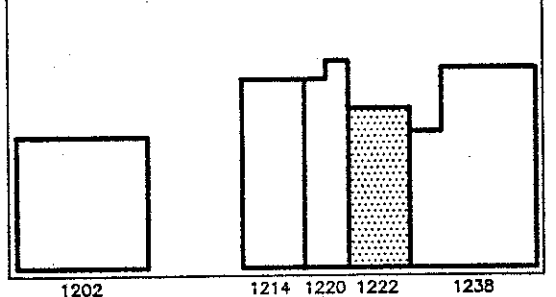
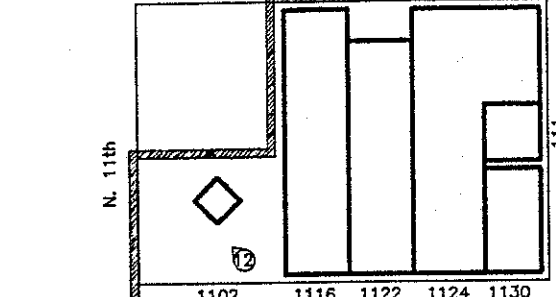
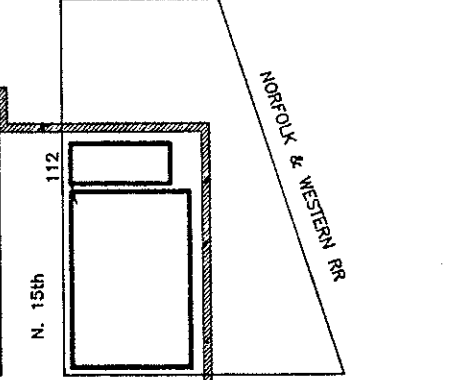
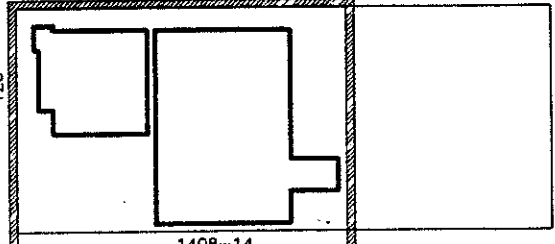
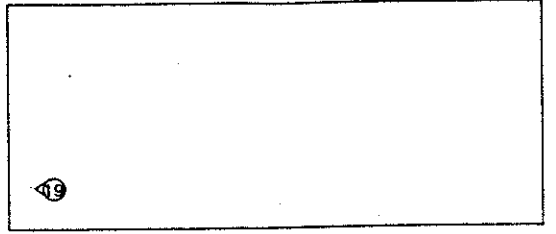
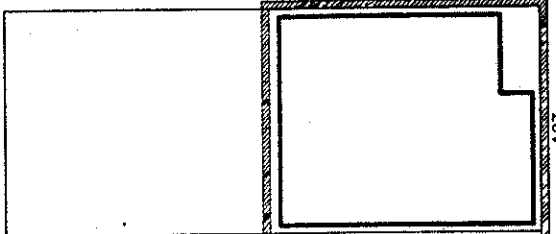
S. 12th

S. MAIN



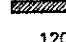
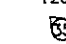

S. 14th

S. 15th

NORFOLK & WESTERN RR



NEW CASTLE COMMERCIAL HISTORIC DISTRICT
SCALE 1" = 120'

-  CONTRIBUTING BUILDING
-  NONCONTRIBUTING BUILDING
-  DISTRICT BOUNDARY
-  BUILDING ADDRESS
-  PHOTOGRAPH REFERENCE