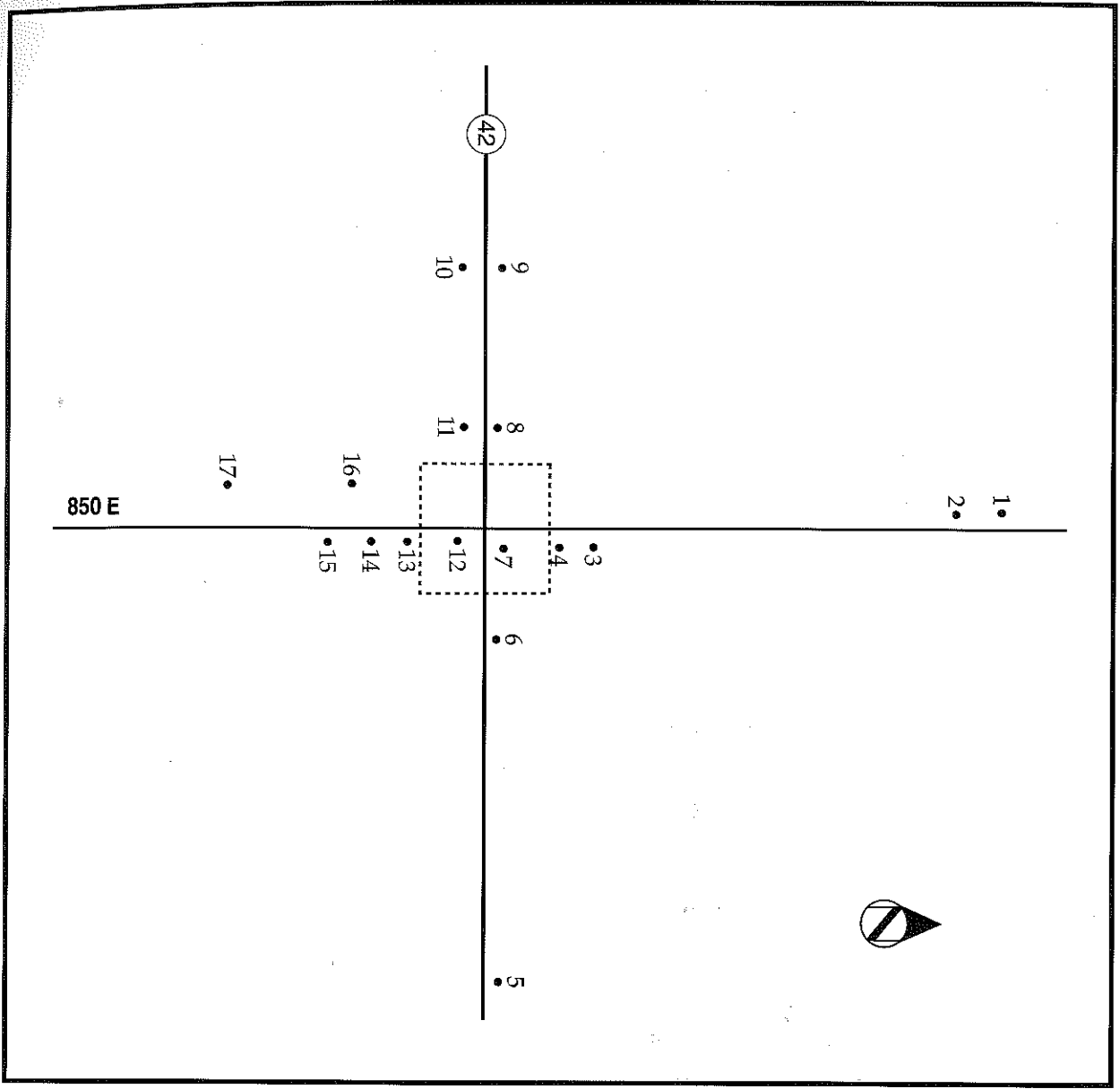


Poland Scattered Sites (26001-017)



The town of Poland was laid out in 1841 and named for James Alexander Poland, a local blacksmith. Poland is located in the east central section of Cass Township and is the township's only town. Although it was never serviced by a railroad, the community developed into a commercial, religious and social center for the surrounding area.

When James Poland erected a log blacksmith shop, local landowners saw an opportunity to establish a new town. John Nees and several other settlers platted sections of their land for the new community which they named Poland. Nees erected a log building which became a general store and soon, Poland was attracting both new residents and businesses.

By 1860, Poland had developed into a bustling commercial center and included a school, a church, a sawmill and a number of houses. During the next two decades, the town reached its zenith. Commercial buildings such as the Poland Hardware Store (26012) and the Chamberlain Drugstore (26011) provided local residents with goods and services.

The town's most prominent building was also built during this period. The Presbyterian congregation organized in 1866 and in 1869 built a simple frame church (26009) on the western edge of town. This Gothic Revival style building served the congregation until 1929 when it closed because of dwindling attendance. Concerned local residents formed a group to restore the chapel and in 1990 were instrumental in getting the building listed in the National Register of Historic Places. The Poland Historical Chapel, as it is now known, is used for holiday programs, weddings and funerals. The adjacent graveyard contains burials from the 1840s.

The majority of Poland's residential architecture dates from the late nineteenth century and is modest in scale. The Godfrey House (26003) and the John H. Schroer House (26004) typify the many examples of

vernacular house types found throughout the community. Two Spelbring houses (26002,26013) are the town's best examples of the Bungalow style.

No. Rtg. Description

001 C Cass Township Public School Marker, 850 E; 1916; Education (519)

002 C Spelbring Farm, 850 E; House: Bungalow, 1937; Outbuildings: transverse-frame barn, garage; Agriculture, Architecture, Vernacular/Construction (519)

003 C Godfrey House, 850 E; T-plan, 1899; Vernacular/Construction (519)

004 C John H. Schroer House, 850 E; T-plan, c.1890; Vernacular/Construction (519)

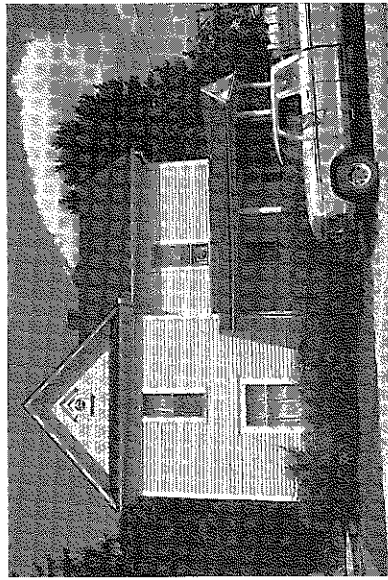
005 C Edward Ahlemeyer Farm, SR 42; House: T-plan/Queen Anne, c.1890; Outbuildings: transverse-frame barn, chicken house, granary; Agriculture, Architecture, Vernacular/Construction (519)

006 C O'Brien House, SR 42; Gable-front, c.1900; Vernacular/Construction (519)

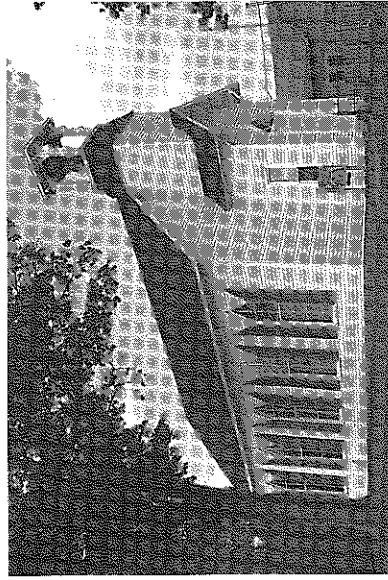
007 C William Kattman House, SR 42; Gabled-ell/Free Classic, 1902; Architecture, Vernacular/Construction (519)

008 C Stone House, SR 42; Double-pen, c.1890; Vernacular/Construction (519)

009 O Poland Presbyterian Church and Cemetery, SR 42; Church: Gothic Revival, 1869; Cemetery: 1840-present; Architecture, Exploration/Settlement, Religion (519) NR



007

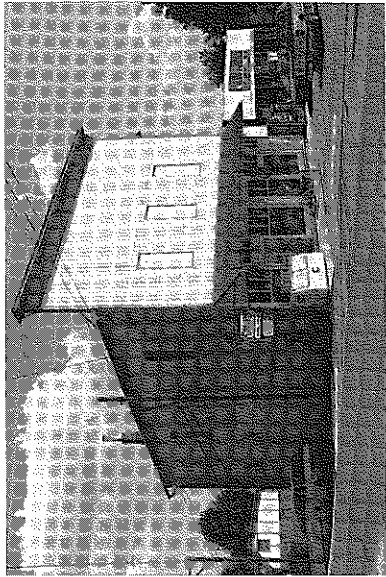


009

010 C Presbyterian Parsonage, SR 42; T-plan, c.1900; Religion, Vernacular/Construction (519)

011 C Chamberlain Drugstore, SR 42; Commercial Vernacular, c.1900; Commerce, Vernacular/Construction (519)

012 C Poland Hardware Store, 850 E; Commercial Vernacular, c.1880; Commerce, Vernacular/Construction (519)



012

013 C Orville Spelbring House, 850 E; House: Bungalow, 1923; Outbuildings: chicken house, smokehouse; Architecture, Vernacular/Construction (519)

014 C Zion Parsonage, 850 E; American four-square, 1919; Religion, Vernacular/Construction (519)

015 C House, 850 E; Gabled-ell, c.1890; Vernacular/Construction (519)

016 C Campbell House, 850 E; House: gabled-ell, c.1890; Outbuildings: smokehouse, privy; Agriculture, Vernacular/Construction (519)

017 C Schultz Farm, 850 E; House: gabled-ell/Queen Anne, 1912; Outbuildings: barn, smokehouse, garage; Agriculture, Architecture, Vernacular/Construction (519)