

United States Department of the Interior
National Park Service

National Register of Historic Places

Continuation Sheet

Section number 7 Page 51 Christian Ridge Historic District

243. 854 E. Boone Street. Fred Petty House. Colonial Revival Cottage, c1940, C.

A concrete foundation underlies this one and one half story, rectangular house clad in wide clapboard. The first story lights are eight over eight double hung windows. The half story contains six over six double hung windows. The medium side gable slate roof has narrow eaves and a wide fascia. Dentils are present at the roof line. The door surround features fluted pilasters with bull's eye corner blocks. The front stoop has a flat roof on decorative metal posts. The main entrance is a wood panel door with upper lights. The chimney is offset. There are multiple additions at the rear of the structure.

244. 858 E. Boone Street. Gable Front Bungalow, c1920, C.

This one story, rectangular, house has a brick foundation. Vinyl oversiding covers the walls. The lights are a combination of three and six over one double hung windows that appear singly and in groupings of two and three. The picture window is flanked by multi-lights. The medium front gable roof has jerkin heads, medium eaves, a boxed cornice and an offset chimney. The front door is recessed without a stoop or entry porch. Concrete steps give access to the door. The east elevation has an extension with a jerkin head gable roof and a driveway leading to a garage located underneath the structure. At the rear of the house is an added open porch with a shed roof.

245. 900 E. Boone Street. Gable Front, c1915, C.

Photo No. 31

The two and one half stories of the rectangular plan house rest on a brick foundation. Vinyl oversiding covers the walls. The lights are two over one double hung windows. Some replacement windows are present. The medium front gable roof has a west elevation gable dormer, wide eaves, a vinyl boxed cornice and brackets. The chimney is offset. The full width front porch is enclosed with screens and vinyl clad walls. The square wood posts appear to have been cut at one time. The off-center front gable of the half hipped roof has wide eaves. The front door is glass. At the rear of the house is a one story extension surmounted by a balcony and a deck. The west elevation ground level entrance has a aluminum hood and a half glass door.

246. 906 E. Boone Street. Gable Front, c1915, C.

Photo No. 31

A brick foundation supports the two and one half story house covered in vinyl oversiding. The rectangular plan features three over one double hung windows. The east elevation has a triple grouping of three over one double hung windows, in addition to a four over two double hung window. The medium front gable roof has wide eaves and a vinyl boxed cornice. The chimney is centrally located. The centered front porch has brick walls, piers and columns with concrete caps that support a medium gable roof. The porch is enclosed with modern windows. The east elevation includes a ground level entrance.

247. 908 E. Boone Street. Bernard Becker House. Craftsman Bungalow, c1920, C

Photo No. 31.

This one and one half story vinyl clad house has a rectangular plan on a brick foundation. The lights are replacement windows. The medium front gable roof has wide eaves, a vinyl boxed cornice and vinyl covered brackets. The chimney is offset. The full width open front porch has a half hipped roof with a centered front gable over the entry and brick walls, piers and columns with concrete caps. The wood panel door has upper lights. Extensions are present on both the east and west elevations.

248. 952 E. Boone Street. Arthur J. Straesser House. Craftsman Bungalow, c1920, C.

Photo No. 31

The square one and one half story narrow clapboard house has a brick foundation. The lights are one over one double hung windows and ribbon windows in various groupings. Replacement windows are present. Some of the window

United States Department of the Interior
National Park Service

National Register of Historic Places

Continuation Sheet

Section number 7 Page 52 Christian Ridge Historic District

and door surrounds include entablatures. The medium side gable roof has a gable front dormer, wide eaves, an open cornice, exposed rafters and knee braces. The full width open front porch has brick walls, piers and columns with concrete caps. The extension located on the east elevation has a shed roof and exposed rafters. The triple one over one double hung dormer windows have a metal awning.

249. 954 E. Boone Street. Craftsman Bungalow, c1920, C.

This one story dwelling has a rectangular plan on a brick foundation. Wide aluminum oversiding covers the walls. The lights are a combination of ribbon and three over one double hung windows that appear singly and in pairs and triples. The low front gable roof has jerkin heads, medium eaves, an open cornice and exposed rafters. The jerkin head front gable extends over the centered porch with brick walls and piers with concrete caps and splayed paneled posts. The main entrance is a glass panel door. The east elevation has an extension with a jerkin head gable roof.

250. 958 E. Boone Street. Craftsman Bungalow, c1920, C.

Like its neighbor, this one story rectangular house has a brick foundation and wide aluminum oversiding. The original clapboard can be seen on the east elevation. The lights are primarily replacement windows. The remaining original three over one double hung windows are found on the east elevation extension. The medium front gable roof has medium eaves, an open cornice and exposed rafters. The front gable projects out over the open porch with brick walls, pier and columns with concrete caps and wide fascia. The main entrance is a wood door with multi-lights. A very long addition is situated at the rear of the house.

South side of East Boone Street

251. 551 E. Boone Street. Ranch, c1970, NC.

The rectangular one story brick house has a picture and sliding glass windows with rowlock sills. The roof is a low side gable with wide eaves. A plywood handicap ramp is present. The house is non-contributing due to the date of its constructed.

252. 557 E. Boone Street. Craftsman Bungalow, c1910, C.

The two story rectangular house has a brick foundation and vinyl oversiding on the walls. The lights are replacement windows. The high side gable roof has a front gable dormer, medium eaves, an open cornice and small returns. The chimney is centrally located. The enclosed entry porch is covered by a medium front gable roof. The main entrance is a modern replacement door. A two story addition is present at the rear of the house.

253. 561 E. Boone Street. Craftsman Bungalow, c1920, C.

Rock-faced ashlar provides the foundation for this one story rectangular plan house. Wide aluminum oversiding covers the walls. The lights are primarily one over one double hung windows. The two picture windows have transoms. The window and door surrounds include entablatures. The medium hipped roof has a hipped front dormer, wide eaves, a boxed cornice and medium fascia. The dormer windows are paired fixed panes. The full width open front porch has a flat roof and decorative metal posts and twisted metal railings. The front facade includes wood shutters. There is an addition at the rear of the house.

254. 601 E. Boone Street. Craftsman Bungalow, c1920, C. This two story clapboard house has a rectangular plan on a rock-faced ashlar foundation. The lights are replacement windows. The high side gable roof contains a large front gable

United States Department of the Interior
National Park Service

National Register of Historic Places
Continuation Sheet

Section number 7 Page 53 Christian Ridge Historic District

dormer, wide eaves, an open cornice and knee braces. The front door is modern. The full width front porch is at present receiving a new half hipped roof, supports and floor. The original medium fascia and partial wide eaves remain.

255. 603 E. Boone Street. Craftsman, c1915, C.

Narrow clapboard covers this square two and one half story house with a brick foundation. Wood belt courses gird the house above the foundation and the first and second story windows. The lights are a combination of three over one double hung windows and ribbon windows. The window surrounds on the east and west elevations include entablatures. The door surround of the ground level entrance on the east elevation also displays entablature. There is a one story extension at the rear of the house. The medium front gable roof has wide eaves, an open cornice, exposed rafters, vergeboard and knee braces. Brick walls, piers and columns with concrete caps comprise the full width open front porch. The medium front gable porch roof has medium fascia, vergeboard, knee braces, exposed rafters and an open cornice. The main entrance is a glass panel door. The chimney is offset.

256. 605 E. Boone Street. Gable Front Bungalow, c1920, C.

Photo No. 56

A parged brick foundation underlies this rectangular, one story house oversided with vinyl. The lights are replacement windows. The medium front gable roof has medium eaves, an open cornice and vergeboard. The chimney is offset. The enclosed, partial width front porch projects outward from the front facade. Splayed paneled wood posts support the medium front gable roof with a ribbon window, medium eaves and exposed rafters.

257. 651 E. Boone Street. Queen Anne, c1900, C.

Photo No. 56

The irregular plan of this two story house rests on a parged brick foundation. Aluminum oversiding covers the walls. The sole original window is the four over one picture window of the front facade. The other lights are replacement windows. The high hipped cross gable roof features parallel gables on the west elevation and a shed dormer on the east elevation. The roof has medium eaves boxed with aluminum oversiding. The full width open front porch has brick walls and piers with concrete caps, and Tuscan columns supporting a low half hipped roof. The main entrance is a wood panel door. Wood shutters are present. The house includes an exterior and a centrally located chimney.

258. 655 E. Boone Street. Craftsman Bungalow, c1920, C.

Photo No. 56

Narrow clapboard covers this one story, rectangular plan house. The lights are replacement windows. The window surrounds include entablatures. The medium front gable roof has a gable dormer on the west elevation, wide eaves, an open cornice, exposed rafters and knee braces. The centered partial width front porch has brick walls and piers with concrete caps. Modern windows and door surround with sidelights enclose the porch. The roof is half hipped. The west elevation incorporates a two story extension. An addition is located at the rear of the house.

259. 659 E. Boone Street. American Four-square, c1910, C.

Photo No. 56

Rock-faced ashlar provides the foundation for this square, two and one half story house. Vinyl oversiding covers the walls. Above the first and second story windows are vinyl belt courses. The lights are primarily replacement windows, however, there are two picture windows with lozenge glass transoms present. The low hipped roof has hipped dormers with paired one over one double hung windows, wide eaves and a vinyl boxed cornice. The chimney is centrally located. The full width open front porch has splayed wood columns, piers and a wood railing.

United States Department of the Interior
National Park Service

National Register of Historic Places

Continuation Sheet

Section number 7 Page 54

Christian Ridge Historic District

260. 701 E. Boone street. Craftsman, c1910, C.

A brick foundation underlies this rectangular, two and one half story clapboard house. A wood belt course circumscribes the house above the foundation and the first floor windows. Four over one double hung windows serve as the primary lights. Ribbon windows and a picture window comprised of a four over one double hung window flanked by three over one double windows are present. The window surrounds of the east and west elevations have entablatures. A one story extension is located at the rear of the structure. The high side gabled roof has wide eaves, an open cornice and knee braces. The partial width enclosed porch features splayed paneled wood columns, a shed roof with a front gable infilled with wood shingles, exposed rafters, a wide fascia and dentils. Wood panels and screens enclose the porch area.

261. 703 E. Boone Street. Craftsman, C1910, C.

The two and one half story clapboard house has a rectangular plan on a brick foundation. A wood belt course encircles the house above the foundation and the first floor windows. A one story extension is situated at the rear of the house. The lights are primarily three over one double hung windows. Two of these flank a four over one double hung window to form the picture window of the front facade. Second story contains replacement windows. The window surrounds of the second story have entablatures. The high side gable roof has wide eaves, an open cornice, exposed rafters and knee braces. The partial width enclosed front porch has brick piers with concrete caps and splayed paneled wood posts. The front gable porch roof features vergeboard with a pendant, wide fascia, exposed rafters and medium eaves. Aluminum oversiding and multi-lights enclose the porch area.

262. 709 E. Boone Street. Craftsman, c1915, C.

Narrow vinyl oversiding covers this square two and one half story house with a brick foundation. The lights are replacement windows. Situated on the eastern elevation is a one story sunroom with casement windows and a flower box on exposed beams. A one story extension is located at the rear of the dwelling. The front gable roof has wide eaves, vinyl boxed braces, a vinyl boxed cornice and medium returns. Modern imbrication embellishes the gable of the front facade along with wood shutters. The small entry porch is covered by a front gable hood supported by square wood columns and pilasters and enclosed by brick walls. The main entrance is a multi-light door with a metal security door. The chimney is offset.

263. 751 E. Boone Street. Craftsman, c1915, C.

The rectangular plan of this wood shingle, two and one half story house rests on a brick foundation. Replacement windows provide the lights. The lights of the half story retain the paired four over one fixed windows. The second story window surrounds incorporate entablature. Two one story extensions are present, one on the east elevation and the other located at the rear of the dwelling. The west elevation has a ground level entrance. The medium side gable roof contains a front gable dormer, wide eaves, an open cornice and knee braces. The dormer displays exposed rafters. The partial width front porch has brick walls and columns with concrete caps. The shed roof features an off-center gable over the entry. Vertical boards and screens enclose a portion of the porch.

264. 755 E. Boone Street. American Four-square, c1915, C.

This two story square plan house rests on a brick foundation. Vinyl oversiding covers the walls. The first story of the house flares out over the foundation. A narrow vinyl belt course encircles the dwelling below and above the second story windows. The lights are primarily replacement windows with a small one over one double hung window on the front facade and a pair of fixed panes in the dormers. Situated at the rear of the house is a one story extension. A second extension is located on the west facade. The low hipped roof contains three hipped dormers, wide eaves and a vinyl boxed

United States Department of the Interior
National Park Service

National Register of Historic Places
Continuation Sheet

Section number 7 Page 55 Christian Ridge Historic District

cornice. The partial width front porch has brick walls and piers with concrete caps and paneled wood posts. The low half hipped porch roof incorporates medium vinyl fascia and wide eaves.

265. 757 E. Boone Street. Craftsman, c1915, C.

Narrow vinyl oversiding covers this two and one half story rectangular house. Brick provides the foundation. Some replacement windows are present. Located at the rear of the house is a one story extension. The original lights are three and four over one double hung windows. A six over one window flanked by three over one windows serves as the picture window on the front facade. The half story contains paired four over one double hung windows. The medium side gable roof has a front gable dormer, wide eaves, vinyl boxed braces and medium returns. The partial width open front porch has brick walls and columns with concrete caps that support the shed roof. The main entrance is a wood panel door with a fanlight.

266. 803 E. Boone Street. Craftsman, c1915, C.

Shiplap vinyl oversiding covers this rectangular, two story house with a brick foundation. A vinyl belt course encircles the house between the two stories and above the second story windows. The medium front gable roof contains a gable dormer on the west elevation, wide eaves, a vinyl boxed cornice, vinyl encased braces and an offset chimney. The lights are replacement windows. The partial width enclosed front porch has a brick foundation, piers with concrete caps and splayed wood posts encased with vinyl. The shed roof has an off-center front gable with medium eaves. Vinyl oversiding and replacement windows enclose the porch area.

267. 809 E. Boone Street. Craftsman Bungalow, c1920, C.

A brick foundation underlies this clapboard, one story, rectangular dwelling. The lights are three over one double hung windows. The window surrounds include entablatures. The medium side gabled roof has jerkin heads, medium eaves, an open cornice, exposed rafters and a centrally located chimney. The partial width screened porch has brick walls, piers, concrete caps and splayed wood posts. The jerkin head front gable porch roof includes medium eaves, knee braces and wide fascia.

268. 851 E. Boone Street. Craftsman, c1910, C.

This two and one half story, rectangular clapboard house rests on a brick foundation. Wood belt courses run above the foundation and the first story windows. The lights are primarily four over one double hung windows. The second story also contains a two over two double hung window and the half story features a ribbon window on the front facade. The second and half story window surrounds have entablature. The east elevation includes a one story shed roof extension. The ground level entrance located on the west elevation has a gable hood on knee braces. The medium side gable roof of the main structure has a front gable dormer, wide eaves, an open cornice, exposed rafters and knee braces. The partial width front porch utilizes brick piers, concrete caps, splayed wood posts with medium fascia and spandrels with screens. The shed roof features and off-center medium front gable.

269. 855 E. Boone Street. Tudor Revival, c1920, C.

The brick foundation of this one and one half story brick house has a row of soldiers at ground level. Six over six double hung windows with brick soldier lintels and rowlock brick sills provide the lights. Metal awnings cover the windows on the east and west elevations. On the front facade the half story features a multi-light oculus surrounded by rowlock bricks. The medium cross gabled roof features overlapping front gables. The smaller of the two gables projects outward and serves as an enclosed entry. The brick stoop is enclosed by a metal railing and is protected by a metal

United States Department of the Interior
National Park Service

National Register of Historic Places

Continuation Sheet

Section number 7 Page 56 Christian Ridge Historic District

awning. The main entrance is an arched wood door with an upper light. The large gable has a jerkin head. Its eastward slope sweeps beyond the house and stands as a wall with an arched doorway containing a wood gate providing access to an open porch with a metal railing. The ground level entrance of the east elevation has a wood panel door with upper multi-lights and a modern storm door. A large chimney with patterned brickwork dominates the front facade.

270. 857 E. Boone Street. Colonial Revival, c1925, C.

The rectangular two story house has a brick foundation. Vinyl oversiding covers the walls. The lights are replacement windows. The medium side gable roof has narrow eaves, a vinyl boxed cornice and a flush gable chimney. The entry porch has a medium front gable roof supported by triple slender square wood columns and pilasters. The wood panel door features a fanlight. Wood shutters grace the windows. The screened porch located on the east elevation is surmounted by a wood railing.

271. 901 E. Boone Street. Craftsman Bungalow, c1920, C.

A brick foundation underlies the rectangular plan of this one and one half story house. Vinyl oversiding covers the walls. The lights are replacement windows. The medium side gable roof contains a large front gable dormer, wide eaves, a vinyl boxed cornice and braces encased in vinyl oversiding. The roof extends over open front porch with square wood posts. The main entrance is a wood door with upper multi-lights. A small shed roof extension is situated on the west elevation. The flush gable chimney features patterned brickwork and concrete caps. At the rear of the house is an open deck.

272. 907 E. Boone Street. Craftsman, c1915, C.

This two and one half story vinyl clad house has a rectangular plan on a brick foundation. Vinyl belt courses encircle house above the first and second floor windows. The lights are replacement windows. The medium front gable roof with medium eaves, a vinyl boxed cornice and small returns. The ground level entrance located on the west elevation has a gable hood on braces. The full width open front porch has brick walls, piers and concrete caps. The medium front gable roof has medium eaves, a medium fascia and dentils. The main entrance is a wood door with upper multi-lights. A deck is located at the rear of the dwelling.

273. [951] E. Boone Street. Gabled-ell, c1910, NC.

Vinyl oversiding covers this one story house. Substantial modifications including a large addition at the rear obscure the L-plan. The lights are replacement windows. The medium cross gable roof has medium eaves, a vinyl boxed cornice and medium returns. The recessed entry porch has vinyl walls and a side gable roof. A modern door with sidelights and panels provides entrance into the dwelling. This property is non-contributing due to the extensive alterations.

274. 955 E. Boone Street. Craftsman Bungalow, c1920, C.

The square plan, two story house is clad in vinyl oversiding and has replacement windows. The high side gable roof features a large shed dormer on the front facade. The roof flares out over the full width open porch and is supported by square wood posts. A wood panel door with a fanlight provides entrance into the house. A two story addition is situated at the rear of the structure. The chimney is centrally located.

United States Department of the Interior
National Park Service

National Register of Historic Places
Continuation Sheet

Section number 7 Page 57 Christian Ridge Historic District

275. 957 E. Boone Street. Craftsman Bungalow, c1920, C.

Beveled concrete block provides the foundation for this one story rectangular house covered with wide aluminum oversiding. The window surrounds include entablatures. The lights are replacement windows. The medium front gable roof has wide eaves, an open cornice and exposed rafters. The partial width front porch has paneled wood piers and columns and a wood railing. The front gable porch roof projects outward from the front facade. The main entrance is a wood door with a diamond shaped pane.

North side of East Armstrong Street

276. East Armstrong Street/Prairie Creek Bridge, c1927, C.

Photo No. 34

There is a filled-spandrel arched opening on this masonry bridge, which crosses Prairie Creek on East Armstrong Street. The arch is constructed of rock-faced masonry units with a pronounced keystone. Typical of the filled spandrel, the entrados are of masonry. The bridge features a heavy, flat ring and low brick parapet with panels which contain a diamond shaped stone in their centers. The parapet caps are also of masonry.

277. 300 E. Armstrong Street. Queen Anne Cottage, c1880, C.

Shiplap covers this one and one half story house. A parged brick foundation supports the T-plan. The lights are replacement windows. The high cross gable roof has medium eaves, an open cornice, exposed rafters and narrow barge board. The wrap-around porch has turned wood posts, a wood railing and a spindlework frieze. The front facade includes a cutaway corner. Additions are located on the west elevation and at the rear of the house. The chimney is offset.

278. 306 E. Armstrong Street. Queen Anne Cottage, c1880, C.

The T-plan of this one and one half story house rests on a brick foundation. Shiplap covers the walls. The lights are a combination of a picture window with a transom and one over one double hung windows. Some windows have been replaced and others are infilled. The window and door surrounds include entablatures. The high cross gable roof has medium eaves, an open cornice, exposed rafters and narrow barge board. The gables contain imbrication. A flush gable chimney is present. The original porch area has been converted to an enclosed living space. The main entrance is a wood panel door with upper multi-lights. The ground level entrance on the east elevation has a gable hood on brackets. Additions are located on the west and north elevations.

279. 350 E. Armstrong Street. Queen Anne Cottage, c1880, C.

The parged brick foundation supports the irregular plan, one and one half story house. Faux brick asphalt shingle covers the walls. Two over two double hung windows provide the lights for the house. The high hipped cross gable roof has medium eaves, an open cornice, brackets and narrow barge board. A truncated half hipped roof covers the open porch with turned wood posts and brackets. The window and door surrounds include entablatures. A modern door gives access into the house. Metal awnings cover the west elevation windows.

280. 358 E. Armstrong Street. American Four-square, c1910, C.

The square plan of this two and one half story vinyl clad house rests on a brick foundation. Only the east elevation retains the original four over one double hung windows. The other lights are replacement windows. The low hipped roof

United States Department of the Interior
National Park Service

National Register of Historic Places

Continuation Sheet

Section number 7 Page 58 Christian Ridge Historic District

has a hipped dormer, wide eaves, a vinyl boxed cornice and an offset chimney. The dormer contains paired three over one double hung windows. The full width front porch has brick walls, piers, columns and concrete caps that support the low half hipped porch roof. Modern windows and a glass door enclose the porch. Both the east and west elevations have one story extensions. An addition is also present on the west elevation.

281. 400 E. Armstrong Street. Vernacular, c1900, NC.

Multiple additions obscure the plan and style of this one story house with a brick foundation. Wide aluminum oversiding covers the walls. The lights are replacement windows. The high cross gable roof has jerkin heads, medium eaves and a boxed cornice with medium returns. The open front porch has slender Tuscan columns and two doors—the main entrance comprised of a modern door with sidelights and an arched half glass door. The extensive alterations render this property as non-contributing.

282. 406 E. Armstrong Street. Queen Anne, c1890, C.

The rectangular, two and one half story shiplap clad house has a brick foundation. The lights are various and include four over one, two over two, and one over one double hung windows. The window surrounds are plain. The high cross gable roof has medium eaves, an open cornice, exposed rafters and vergeboard. The front facade features a cutaway corner. The shed roof porch has one turned wood post in conjunction with slender square wood posts and a lattice panel on the east end for privacy. The entrance is a modern door. Additions are located at the rear of the house.

283. 408 E. Armstrong Street. T-plan, c1890, C.

Vinyl oversiding covers this two story house with a brick foundation. The lights are replacement windows. The high cross gable roof has medium eaves and a vinyl boxed cornice with small returns. A low half hipped roof covers the wrap-around porch with decorative metal posts. Wood shutters with cutout hearts embellish the house. The front facade incorporates additions.

284. 452 E. Armstrong Street. Craftsman, c1910, C.

This two story house has a rectangular plan on a brick foundation. Narrow clapboard covers the walls. A wood belt course encircles the house above the second story windows. The lights are six over one double hung windows. The window surrounds have entablatures. The medium cross gable roof has wide eaves, a boxed cornice and knee braces. The full width front porch has a medium half hipped roof and is enclosed by narrow clapboard oversiding. The recessed entry has a triple casement window with a fanlight and a wood panel door. On the west elevation is a one story shed roof extension. The chimney is centrally located.

285. 500 E. Armstrong Street. Queen Anne, c1885, C.

The L-plan of this vinyl clad two story house rests on a brick foundation. The ell has been enclosed to provide additional living space. The lights are replacement windows. The high cross gabled roof has medium eaves, a vinyl boxed cornice and vinyl vergeboard. The gables have pent roofs. The addition to the front facade projects beyond the front gable. The entry porch has a bellcast shed roof. The main entrance is a wood panel door with upper multi-lights. The east elevation includes a ground level entrance with a metal awning. Metal shutters are present. The chimney is offset.

286. 508 E. Armstrong Street. Colonial Revival, c1940, C.

Wide aluminum oversiding covers this rectangular two story house. The windows are six over six double hung windows. The high side gable roof contains three front gable dormers and minimal eaves. A wing with a half hipped

United States Department of the Interior
National Park Service

National Register of Historic Places

Continuation Sheet

Section number 7 Page 59 Christian Ridge Historic District

bellcast roof extends to the west of the main structure. The stoop has a metal awning and a decorative metal railing. Underneath the paired windows of the front facade are decorative metal window boxes. A wood panel door provides entrance into the house. The ground level entrance located on the east facade also displays a metal awning and metal railing. The chimney is offset.

287. 552 E. Armstrong Street. Colonial Revival Cottage, c1940, C.

A row of soldiers tops off the brick foundation of this brick one and one half story, rectangular house. The lights are primarily six over six double hung windows. The west elevation has an eight over one double hung window. The half story has one over one double hung windows. Brick soldiers provide the lintels and rowlock brick form the sills. The medium side gable roof has medium returns. Brick dentils at the roof line embellish the front facade. The overlapping gables of the front facade project slightly outward. The smaller has a recessed entry porch that is arched with a double row of rowlock bricks. The wood panel door has a small fixed pane. The partial width front porch is completely open without walls or a roof. The ground level entrance located on the west elevation has a shed hood on brackets. Two chimneys are present. The flush gable chimney features quoins. The other chimney is offset.

288. 558 E. Armstrong Street. Colonial Revival Cottage, c1940, C.

The brick one and one half story rectangular plan house has a row of brick soldiers at ground level. The lights are eight over eight double hung windows. Brick soldiers serve as lintels and rowlock bricks provide the sills. The high cross gable roof has minimal eaves and a flush gable chimney. The roof flares over the porch area. The open partial width front porch features brick columns. A double row of rowlock bricks form two front arches and one side arch with concrete keystones and quoins at the end of the curvature. A sunroom has been added at the rear of the house. The east elevation ground level entrance has a shed hood on brackets.

289. 600 E. Armstrong Street. Craftsman Bungalow, c1920, C.

A brick foundation supports the rectangular plan of this vinyl clad one story house. The lights are primarily five over one double hung windows. Two four over one windows flank a five over one window and comprise the picture window of the dwelling. The medium cross gable roof has a second front gable that extends over the porch area. The partial width open front porch has brick walls, piers and concrete caps. Vinyl oversiding covers the original splayed wood posts. Metal shutters decorate the exterior of the house. The west elevation contains an extension with a triple five over one window. The east elevation extension includes paired five over one windows. Two offset chimneys are present.

290. 602 E. Armstrong Street. Colonial Revival Cottage, c1930, C.

The rectangular one story house has a brick foundation with a row of soldiers at ground level. Wide clapboard covers the walls. The lights are one over one double hung windows. The window surrounds are plain. The medium cross gable roof has overlapping front gables, minimal eaves, small returns and a centrally located chimney. Underneath the smaller of the front gables is an enclosed entry with a wood panel door. The door surround features square wood pilasters. A metal awning and railing are present. The west elevation entrance has a half hipped roof on square wood columns.

291. 604 E. Armstrong Street. Craftsman, c1910, C.

Narrow clapboard covers this two and one half story rectangular house with a brick foundation. Wood belt courses encircle the house at the foundation and above the first and second story windows. The lights are primarily replacement windows with ribbon windows located in the half story. The medium side gable roof has a front gable dormer, wide eaves, an open cornice, medium returns and knee braces. The extension on the west elevation has a half

United States Department of the Interior
National Park Service

National Register of Historic Places

Continuation Sheet

Section number 7 Page 60 Christian Ridge Historic District

hipped roof. There is also a one story extension at the rear of the dwelling. The full width enclosed front porch has brick walls, columns and concrete caps. Modern windows and a modern door with sidelights enclose the porch.

292. 650 E. Armstrong Street. Craftsman, c1910, C.

Brick supplies the foundation of this rectangular, two and one half story clapboard house. A wood belt course runs below the second story windows. The lights are primarily replacement windows with a single fixed sash located on the west elevation and paired multi-lights in the half story. The medium front gable roof has jerkin heads, medium eaves, an open cornice and exposed rafters. The full width, partially enclosed front porch has a half hipped roof with a jerkin head front gable covering brick walls and columns with concrete caps. A portion of the porch is enclosed by modern windows. The main entrance is a multi-light door. A gable hood on brackets covers the ground level entrance on the west elevation.

293. 658 E. Armstrong Street. Raymond Fowler House. Prairie School, c1915, C.

Photo No. 32

This outstanding two and one half story brick house has a rectangular plan. A soldier brick course encompasses the house below the second story windows. The various lights include multi-lights and two, three and four over one double hung windows. Rowlock bricks form the sills. The low hipped roof has a shed dormer with exposed rafters and triple multi-lights. A curvilinear wood hood rests on brick columns embellished by stone diamonds. Both the columns and the brick piers that make up the entry porch have concrete caps. The main entrance is a wood panel door with upper multi-lights and sidelights. To the west of the main structure is a porte-cochere with brick columns that extend above the flat roof cover and which are linked by a metal railing running along the perimeter of the roof. The one story sunroom located on the east elevation has a flat roof with brick piers and concrete caps connected by a metal railing. A shed roof on brackets protects the sunroom windows. To the front of the sunroom are brick steps that lead to a patio area. There is access to the sunroom room from the second story. Three chimneys are present. One is exterior and situated on the east elevation. The other two chimneys are offset.

294. 750 E. Armstrong Street. Craftsman Bungalow, c1920, C.

A rock-faced ashlar provides the foundation for this one story, rectangular house. Vinyl oversiding covers the walls. The lights are ribbon and three over one double hung windows. The west elevation contains an added bay window on a concrete block foundation. The medium front gable roof has a secondary gable that projects over the porch area, wide eaves, an open cornice and vergeboard. The chimney is centrally located. The full width open front porch has splayed wood columns and piers connected by a metal railing. Rock-face ashlar piers support the porch floor. Lattice panels serve as a skirt around the porch. The interior living space projects out into the porch area.

295. 754 E. Armstrong Street. Colonial Revival Cottage, c1920, C.

This rectangular, one and one half story house rests on a brick foundation with soldiers at ground level. Wide aluminum oversiding covers the walls. The lights are six over one double hung windows. The medium side gable roof has minimal eaves and a flush gable chimney. The projecting entry has a front gable and an arched, half glass door. The arched door surround includes entablature. There is a metal awning over the doorway and the stoop has metal railings. At the rear of the house is an addition. Wood shutters are present.

296. 758 E. Armstrong Street. Colonial Revival Cottage, c1920, C.

The wide clapboard house has a rectangular plan on a brick foundation with brick soldiers at ground level. The lights are six over one double hung windows and a fixed multi-light in the half story. The interior room of the front facade

United States Department of the Interior
National Park Service

National Register of Historic Places
Continuation Sheet

Section number 7 Page 61 Christian Ridge Historic District

projects outward and is covered by a medium front gable with a decorative louver with entablature. The medium side gable roof has minimal eaves. The exterior chimney is located on the front facade. The recessed arched door surround has entablature and a half glass arched door with multi-lights. Multiple additions are situated on the west elevation and at the rear of the dwelling.

South side of East Armstrong Street

297. 309 E. Armstrong Street. Queen Anne, c1890, C.

Photo No. 59

The two and one half story clapboard house has an L-plan on a brick foundation. The dwelling includes a cutaway corner with corner boards. The lights are primarily replacements. A multi-light with entablature on the second floor and a fixed pane in the half story are the remaining original lights. The window surrounds have bull's eye corner blocks and a grooved lintel. The high cross gable roof has medium eaves, an open cornice, brackets and barge board with pendant and cutouts. A flush gable chimney and a central chimney are present. The partially enclosed porch has a turned wood post and pilasters, and a spindlework railing and frieze. The main entrance is a modern door. There are additions located at the rear of the house.

298. 353 E. Armstrong Street. Queen Anne Cottage, c1900, C.

Photo No. 59

A combination of wide aluminum and vinyl oversiding cover this one and one half story house with an irregular plan on a brick foundation. The lights are various and include one over one double hung windows, a picture window with a lozenge glass transom, a fixed sash and replacement windows. The high hipped cross gable roof has medium eaves, an open cornice, brackets and vergeboard. The front facade projects outward into the porch area. The door surround contains entablature and a lozenge glass transom. The open front porch has square wood posts and railing. Three sets of stairs provide access to the porch area. Multiple additions are present.

299. 359 E. Armstrong Street. Gabled-ell, c1900, C.

Photo No. 59

A parged brick foundation supports the L-plan of this clapboard one and one half story house. The lights are one over one double hung windows with a fixed sash in the half story. The window surrounds have entablature. The high cross gable roof has medium eaves, an open cornice, brackets and vergeboard. The open side porch has a shed roof with an exposed beam, wide fascia, a turned wood pilaster and metal railing posts. Located at the rear of the house are multiple additions.

300. 401 E. Armstrong Street. Philippe House. Craftsman Bungalow, c1915, C.

Photo No. 33 & 59

Narrow clapboard covers this two story, rectangular house on a brick foundation. The lights are various and include three, four and five over one double hung windows. The window surrounds contain entablature. The medium side gable roof has front and rear gable dormers, wide eaves, an open cornice and knee braces. The forward slope of the roof extends over the open full width porch with brick columns and concrete caps.

301. 409 E. Armstrong Street. Grover Sims House. Queen Anne, c1900, C.

Photo No. 33

The two story clapboard house has a square plan on a brick foundation. The first story flares out over the foundation and there are wood belt courses above the first and second story windows. The lights are primarily one over one double hung windows, but a fixed pane and Queen Anne sashes are present. The high truncated hipped roof with cross gables has jerkin heads on the side gables, medium eaves, an open cornice, brackets and vergeboard. The front gable contains cutout bracing. The rear gable is located on a diagonal from the front gable. The open front entry porch has a

United States Department of the Interior
National Park Service

National Register of Historic Places
Continuation Sheet

Section number 7 Page 62 Christian Ridge Historic District

shed roof with a square wood post, turned wood piers and a spindlework balustrade. On the front facade is a small second story porch with a square wood post and cutout wood railing. The east elevation open porch includes turned wood posts, brackets, a spindlework railing and a shed roof with imbrication on the side panels. Additions are located at the rear of the structure.

302. 451 E. Armstrong Street. Craftsman Bungalow, c1920, C. Photo No. 33

Brick provides the foundation for this rectangular, two story house covered with wide aluminum oversiding. The lights are primarily six over one double hung windows. The picture window is an eight over one window flanked by six over one windows. Multi-lights and replacement windows are also present. The medium side gable roof has front and rear shed dormers, wide eaves and an offset chimney. The partial width open front porch has triple square wood posts and aluminum oversiding walls that support a medium front gable roof. The main entrance is a wood panel door with an upper ribbon window.

303. 551 E. Armstrong Street. Gable Front, c1910, C.

Wide aluminum oversiding covers this one and one half story, rectangular house on a brick foundation. The lights are replacement windows. The medium front gable roof has gable dormers, medium eaves and a boxed cornice. The wrap-around porch has a half hipped roof with a high gable over the porch entrance supported by square wood posts connected by a metal railing. A modern door supplies access to the house.

304. 553 E. Armstrong Street. No Style, post 1997, NC.

In 1997 the Historic Sites and Structures Survey listed this address as a vacant lot. The current dwelling is a one story, L-plan brick and shiplap vinyl oversiding with a medium jerkin head cross gable roof. Because of its recent construction this property is non-contributing.

305. 601 E. Armstrong Street. Gable Front, c1920, C.

This one story, rectangular house has a brick foundation and vinyl oversiding. The lights are replacement windows with a ribbon window located in the attic area. Wood shutters frame the windows. The basement windows have rowlock brick sills. The roof is a medium side gable with wide eaves and a vinyl boxed cornice. The entry porch has a projecting front gable, wide fascia, a vinyl boxed cornice and small returns supported by double square wood columns. The main entrance is a modern wood panel door with a fanlight. Added to the west elevation is a cantilevered bay window. There are also additions and a deck at the rear of the house.

306. 603 E. Armstrong Street. Gable Front, c1920, C.

Narrow clapboard covers this one story, rectangular house with a brick foundation. The lights include a multi-light picture window, three over one double hung windows and a ribbon window in the attic area. Wood shutters flank the windows. The medium front gable roof has wide eaves, an open cornice and exposed rafters. Screens enclose the wraparound porch with brick walls, piers and columns with concrete caps. Both a flush gable chimney and an offset chimney are present. An addition is located at the rear.

307. 609 E. Armstrong Street. Colonial Revival, c1925, C.

This two story brick house has a rectangular plan with a one story wing/sunroom on the east elevation and an addition to the west. The lights are six over six double hung windows. The medium side gable roof has minimal eaves, a boxed cornice, medium returns, and a flush gable chimney. In the gables are semicircular louvers encompassed by

United States Department of the Interior
National Park Service

National Register of Historic Places
Continuation Sheet

Section number 7 Page 63 Christian Ridge Historic District

rowlock bricks. At the roof line is a frieze with dentils. The projecting entry porch has a front gable on double slender square wood columns with a decorative cornice. Wood shutters with cutout crescents frame the windows. A metal security door obscures the main entrance into the house.

308. 651 E. Armstrong Street. O. E. Biery House. Craftsman, c1905, C.

Brick provides the foundation of this two story clapboard house with a rectangular plan. There is a one story extension on the west elevation. The lights are a combination of three and five over one double hung windows. On the front facade is a flower box located below paired five over one windows. The window surrounds have entablature. The basement windows are infilled with glass blocks. The low hipped roof has wide eaves, an open cornice and exposed rafters. The chimney is offset. The east elevation ground level entrance has a gable hood on brackets. The entry porch has a front gable with arched fascia, Tuscan columns and brick piers with concrete caps. The main entrance is a glass panel door.

309. 659 E. Armstrong Street. Craftsman Bungalow, c1920, C.

The one story, rectangular house has a brick foundation and vinyl oversiding. The lights are six over six double hung windows and include a cantilevered bow window with a half hipped roof, two east elevation picture windows flanked by multi-lights and an arched multi-light in the attic area. The medium cross gable roof has overlapping gables on the front facade and east elevation. A small front gable hood on knee braces protects the entry porch with brick steps and a concrete floor on a brick foundation. An addition is located on the east elevation. The chimney is offset.

310. 701 E. Armstrong Street. Craftsman Bungalow, c1925, C.

This rectangular one story home rests on a rock-face ashlar. Narrow vinyl oversiding covers the walls. The lights are three over one double hung windows flanked by wood shutters. The medium front gable roof has wide eaves, a vinyl boxed cornice and brackets. The full width open front porch has a half hipped roof supported by brick columns atop brick piers that are connected by a twisted metal railing. A stoop and secondary entrance is located on the west elevation. An attached garage is located at the rear of the house.

311. 705 E. Armstrong Street. American Four-square, c1905, C.

The square plan of this two and one half story clapboard house rests on a brick foundation. The lights are primarily replacement windows, but the original picture window with transom remains. The window and door surrounds have entablature. Wood shutters are present. The medium hipped roof has a hipped dormer, wide eaves, an open cornice and exposed rafters. The full width open front porch contains honeycomb brickwork walls, brick columns and a pier, all with concrete caps supporting a half hipped roof.

312. 709 E. Armstrong Street. American Four-square, c1905, C.

Like its neighbor, this two and one half story clapboard house has a square plan on a brick foundation. The lights are replacement windows and a small one over one double hung window in the hipped dormer. The window surrounds have entablature. The medium hipped roof with hipped dormer has wide eaves, an open cornice and exposed rafters. The full width front porch has honeycomb brickwork walls, brick columns and a pier, all with concrete caps. Storm windows enclose the porch area.

United States Department of the Interior
National Park Service

National Register of Historic Places
Continuation Sheet

Section number 7 Page 64 Christian Ridge Historic District

313. 751 E. Armstrong Street. Tudor Revival Cottage, c1930, C.

The one story rectangular house has a brick foundation, a brick front facade and wide aluminum oversiding on the remaining three walls. The lights are six over six double hung windows. A flower box is situated underneath the windows on the front facade. The window sills are rowlock bricks. The high side gable roof has a projecting gable enclosed entry with wood infill and exposed beams. The door surround has a Tudor arch in a rectangular frame. The main entrance is a wood door with a small lattice window and metal hinges. The prominent, front facade chimney has two chimney pots.

314. 757 E. Armstrong Street. Colonial Revival, c1935, C.

Brick provides the foundation for this rectangular, two story home situated at the rear of its lot. The first floor lights are nine over one double hung windows which may be replacements. The second story lights are all replacement windows. Metal shutters are present. Of particular interest is the full width, two story open gallery with fluted square wood columns. The upper gallery has a decorative metal balustrade and two doors with multi-lights opening out onto the gallery. The door surround of the main ground level entrance has square fluted pilasters and a broken pediment. On the west elevation is a large one and one half story addition and a two car garage. A one story addition is present on the east elevation. The medium side gable roof has medium eaves, an open cornice, small returns and large exposed beams. The chimneys are offset.

North side of Glendale Drive

315. 508 Glendale Drive. Ranch, c1955, NC. Photo No. 38

This rectangular, one story home has a concrete foundation and is covered by random range rock-faced ashlar. The front facade contains a picture window flanked by multi-lights. The window sills are rock-faced concrete. The projecting front entry has an arched doorway composed of rowlock ashlar. The main entrance is a wood panel door with upper multi-lights and art glass sidelights above panels. Due to the date of its construction this property is non-contributing.

316. 552 Glendale Drive. Craftsman Bungalow, c1920, C. Photo No. 38

Narrow clapboard covers this one story rectangular house on a brick foundation. The lights are three and four over one fixed and double hung windows. A ribbon window is present in the attic area. A bay window has been added to the west elevation. The window and door surrounds have entablature. The medium front gable roof has wide eaves and knee braces. The chimney is centrally located. The wrap-around porch has brick walls and piers with concrete caps, square wood posts, and a low front gable roof with wide eaves and fascia.

317. 558 Glendale Drive. Craftsman Bungalow, c1925, C. Photo No. 38

Beveled concrete blocks provide the foundation for this rectangular, one story house. Aluminum covers the walls. With the exception of the ribbon window in the attic area, the lights are replacement windows. The medium front gable roof has wide eaves and a boxed cornice. The enclosed porch projects outward from the front facade. Brick columns with concrete caps, aluminum oversiding and modern windows enclose the porch.

318. 600 Glendale Drive. Craftsman, c1915, C.

This two story clapboard house has a rectangular plan on a concrete block foundation. Wood belt courses encircle the house above the first and second story windows. The lights are replacement windows. The medium side gable roof has a front gable dormer, medium eaves, an open cornice, exposed rafters and vergeboard. The chimney is offset. The full

United States Department of the Interior
National Park Service

National Register of Historic Places

Continuation Sheet

Section number 7 Page 65 Christian Ridge Historic District

width front porch has been converted into an interior living space with an added bay window on brackets.

319. 608 Glendale Drive. Dutch Colonial Revival, c1940, C.

Vinyl oversiding covers the two story, rectangular house with a brick foundation. The lights are a combination of eight over one and six over six double hung windows. The side gambrel roof has a large shed dormer, wide eaves and a boxed cornice. The chimney is offset. The projecting entry porch has a medium front gable with a recessed arch, a hanging lantern and modern fluted columns. The main entrance is a wood panel door with sidelights above panels. On the east elevation is a one story screened in porch with wood panel walls and Tuscan pilasters.

320. 650 Glendale Drive. Colonial Revival, c1920, C.

This two story rectangular house has vinyl oversiding and a brick foundation. The lights are six over one double hung windows. The medium side gable roof has a large recessed shed roof dormer, medium eaves and a vinyl boxed cornice. The forward slope of the roof extends over the front porch that is defined by vertical wood walls. The main entrance is a multi-light door flanked by Tuscan pilasters.

321. 656 Glendale Drive. Gabled-ell, c1900, NC.

Rock-faced ashlar provides the foundation for this one story L-plan house that has undergone extensive alternations. Modern wood oversiding and shiplap cover the walls. The lights are replacement windows. The roof is a high cross gable and the chimney is offset. A modern door, porch and deck are present. Due to the number of modifications and additions this house is considered non-contributing.

322. 700 Glendale Drive. Craftsman, c1915, C.

Clapboard covers this two story, square plan house with a brick foundation. A one story extension is located at the rear of the house. A smaller shed roof extension is situated on the west elevation. The lights are a combination of replacement and three over one double hung windows. The first floor window surrounds have entablature. The medium front gable roof has a shed dormer on each elevation, wide eaves, a boxed cornice, knee braces and vergeboard. The chimney is centrally located. The full width open front porch has brick walls, columns and a pier, all with concrete caps. The medium front gable roof has patterned wood infill reminiscent of half-timbering. A glass door serves as the main entrance to the house. The ground level entrance on the east elevation has a half glass door.

323. 708 Glendale Drive. Craftsman, c1910, C.

The rectangular, two story house has a brick foundation and wide aluminum oversiding. The lights are one over one double hung windows. The east elevation incorporates a lozenge glass window. The medium side gable roof has wide eaves, a boxed cornice and brackets. The partial width, front porch has a shed roof with a medium gable over the entry. Brick walls and piers with concrete caps, and ornamented splayed wood posts support the roof. Modern windows enclose the porch. An opening for the water spout is present. On the east elevation is a ground level entrance with a metal hood. There is a one story addition at the rear of the house.

324. 710 Glendale Drive. Craftsman Bungalow, c1915, C.

A brick foundation underlies this one story, rectangular clapboard house. The windows have double hung multi-light sashes over plate glass. The window surrounds have entablature. The medium side gable roof has wide eaves, an open cornice, knee braces and verge board. The partial width front porch projects outward with a medium gable roof, wide eaves, knee braces and exposed rafters. Brick walls, columns and piers of the porch have concrete caps. The main

United States Department of the Interior
National Park Service

National Register of Historic Places
Continuation Sheet

Section number 7 Page 66 Christian Ridge Historic District

entrance is a multi-pane door.

325. 752 Glendale Drive. Tudor Revival Cottage, c1940, C.

The brick foundation of this one story, rectangular house has a row of brick soldiers at ground level. Vinyl oversiding covers the walls. The lights are replacement windows. A bay window on brackets is possibly a later addition. The medium side gable roof has a projecting enclosed entry with a high gable. A wood panel door with upper multi-lights provides entrance into the dwelling. The flush gable chimney has a chimney pot.

326. 758 Glendale Drive. French Eclectic, c1930, C.

Photo No. 41

This notable one and one half story Flemish bond brick house features a rectangular plan with a high conical dome tower. The six over six double hung windows have arched lintels and concrete sills. The casement windows are replacements. Wood panel shutters flank the windows. Brick quoins, a modern lattice window and a weathervane embellish the tower. A wood door in the tower with a small lattice window provides the main entrance to the house. The high hipped roof has two hipped dormers and two offset chimneys. Wide aluminum oversiding covers the dormers. Stretcher bricks serve as dentils and brick soldiers top off the foundation.

South side of Glendale Drive

327. 501 Glendale Drive. Contemporary/Colonial Revival, c1970, NC.

This brick rectangular house with wings has modern eight over eight double hung windows with concrete sills. The low side gable roof has minimal eaves and wide fascia. Aluminum oversiding covers the recessed doorway. There is a wood panel door with a transom and metal shutters. The recent construction of this house renders it non-contributing.

328. 551 Glendale Drive. Craftsman Bungalow, c1910, C.

Photo No. 37

Vinyl oversiding covers this one story, rectangular house on a brick foundation. The lights are various and include ten, twelve and fifteen over one double hung windows, as well as multi-lights. The medium side gable roof has overlapping gables. The full width open front porch incorporates curved brick walls that connect the piers and columns, all of which have concrete caps. The columns extend through the front gable roof over the entry. Wood braces and half-timbering is present in the gable. Recessed panels embellish the flush gable chimney.

329. 555 Glendale Drive. Craftsman Bungalow, c1915, C.

This one story house has a rectangular plan on a brick foundation. Aluminum oversiding covers the walls. The lights are a combination of replacement and six and eight over two double hung windows. The medium cross gable roof has jerkin heads, wide eaves, a boxed cornice and brackets. The chimney is offset. The full width open front porch has brick walls, piers and columns, all with concrete caps. Patterned brickwork embellishes the columns. Under the east elevation gable is a small extension.

330. 603 Glendale Drive. Colonial Revival, c1925, C.

The rectangular plan of this two story brick home rests on a brick foundation. The first floor lights are six over nine double hung windows. The second story lights are six over six double hung windows. Brick soldiers make up the lintels and rowlock brick form the sills. The high side gable roof has minimal eaves and a frieze with dentils. The door surround of the wood panel door has a triangular pediment, Greek key detailing and square, fluted pilasters. Wood shutters flank the windows. Located at the rear of the house is a screened in porch. A flush gable chimney is present.

United States Department of the Interior
National Park Service

National Register of Historic Places
Continuation Sheet

Section number 7 Page 67 Christian Ridge Historic District

331. 607 Glendale Drive. Clarence Spencer House. Craftsman Bungalow, 1928, C. Photo No. 39

The one and one half stories of this rectangular house covered with aluminum oversiding rests on a brick foundation. The lights are nine over one double hung windows. The side gables of the cross gable roof have jerkin heads. The roof includes medium eaves, a boxed cornice and wide returns. There are two arched top dormers with double hung multi-lights. The open partial width front porch has a curved hood on modern fluted columns over the entry. The main entrance is a multi-light door with an outer metal security door. Wood shutters are present.

332. 651 Glendale Drive. Craftsman Bungalow, c1925, C.

A rock-faced ashlar foundation supports the two story rectangular house covered with aluminum oversiding. The lights are replacement windows. The medium side gable roof has a large shed dormer, wide eaves, a boxed cornice and brackets. The forward slope of the roof extends over the front porch that is enclosed by storm windows and a modern door. Located on the west elevation is a ground level entrance. A two story addition is situated at the rear of the house.

333. 655 Glendale Drive. Craftsman Bungalow, c1930, C.

The rectangular plan of this one story vinyl clad house rests on a parged brick foundation. The lights are a combination of replacement and three over one double hung windows. The medium front gable roof has wide eaves, a boxed cornice and small returns. The partial width screened in front porch has vinyl walls, splayed paneled wood pilasters and a half hipped roof. The main entrance is a wood panel door with upper multi-lights.

334. 659 Glendale Drive. Craftsman Bungalow, c1930, C.

Photo No. 60

Narrow vinyl oversiding covers this one and one half story rectangular plan house on a brick foundation. The lights are replacement windows. The medium hipped and cross gable roof has wide eaves and a boxed cornice. The gables have pent roofs. On the east elevation is an extension underneath the cross gable. The original partial width front has been enclosed and converted into interior living space. The brick columns with concrete caps are incorporated into the structure. Extending to the west is a porte-cochere with brick columns. The two chimneys are offset. An attached garage is located at the rear of the house.

335. 701 Glendale Drive. Craftsman Bungalow, c1910, C.

This one story, rectangular house has a brick foundation and narrow aluminum oversiding. On the west elevation is an extension. The lights are three over one double hung windows. The medium cross gable roof has overlapping gables on the front facade, medium eaves, a boxed cornice and brackets. The full width front porch has brick walls and piers, both with concrete caps, and splayed wood posts that support the front gable. The flat roof extension over the western portion of the porch suggests that this area of the porch was originally uncovered. A multi-light door serves as the main entrance into the house. Metal shutters with brass hinges frame the windows. An attached garage is located at the rear of the structure.

336. 703 Glendale Drive. Craftsman Bungalow, c1920, C.

Vinyl oversiding and clapboard cover this two story, rectangular dwelling with a brick foundation. The lights are various and include six, eight and ten over one double hung windows, as well as replacement windows. Some window surrounds have entablature. The medium side gable roof has a large gable dormer, wide eaves, a boxed cornice, medium returns and brackets. The full width front porch has brick walls and piers, both with concrete caps, and splayed paneled wood posts and pilasters that support a flared shed roof. A multi-light door provides entrance into the house. The door surround includes entablature. The ground level entrance on the west elevation has a half hipped hood on brackets and a

United States Department of the Interior
National Park Service

National Register of Historic Places
Continuation Sheet

Section number 7 Page 68 Christian Ridge Historic District

modern door.

337. 709 Glendale Drive. Craftsman Bungalow, c1915, C.

The two story rectangular house rests on a brick foundation. Aluminum oversiding covers the walls. The lights are replacement windows. The high bellcast side gable roof has large shed dormers on the front and back, wide eaves, a boxed cornice and brackets. The dormers are recessed into the roof and have square wood posts and a decorative metal balustrade. The forward slope of the roof extends over the full width front porch that is now enclosed with louvered windows and a modern door. The original brick walls and piers with concrete caps remain. The east elevation ground level entrance has a wood panel door with multi-lights. A one story addition is situated at the rear of the dwelling.

338. 751 Glendale Drive, Craftsman Bungalow, c1920, C.

A concrete block foundation supports the two story, rectangular house covered with aluminum oversiding. The lights are replacement windows. The high side gable roof has a shed dormer, wide eaves, a boxed cornice and brackets. The full width front porch has vinyl walls and screens. A modern door provides access to the house. Both an offset and a flush gable chimney are present. There is a one story addition at the rear of the house.

339. 755 Glendale Drive. Colonial Revival, c1930, C.

The vinyl and brick oversiding of this rectangular, one and one half story house obscures its foundation. The remaining original window is the multi-light picture window. The other lights are replacements. Rowlock bricks form the sills. The medium side gable roof has two front gable dormers, minimal eaves and a flush gable chimney. The enclosed entry has a wood panel door with sidelights to the east. A projecting front gable west of the entry has a brick facade. The east elevation contains a bay window on brackets and a half hipped roof.

West side of South Harrison Street

340. 758 S. Harrison Street. Colonial Revival, c1920, C.

This two and one half story rectangular house with a wing has shiplap vinyl oversiding and replacement windows. The oversiding obscures the foundation. The high side gable roof contains two gable dormers with pediments, wide returns, wide eaves and a boxed cornice. Two fanlights are located in each gable. The entry porch has a medium front gable with a pediment, false exposed rafters, stout Tuscan columns and wide fascia. The arched door surround includes sidelights and an arched transom. A modern art glass door with sidelights and a transom provides access to the house. The one story wing on the north elevation is covered with paneled wood and has modern casement windows and a high side gable roof. Both a flush gable and an offset chimney are present.

341. 754 S. Harrison Street. Prairie School, c1920, C.

Brick supplies the foundation for the two and one half story house with a square plan. Stretcher bond brick topped by rowlock bricks covers approximately four feet of the first floor walls. The rest of the structure is clad in clapboard. A wood belt course encircles the house above the first story windows. The south elevation contains a one story sunroom with a decorative frieze. The sunroom's flat roof supports a balcony with paneled wood piers and a wood balustrade. A similar balcony is present at the rear of the house. The lights are a combination of replacement, casement, multi-light, and three and four over one double hung windows. The sills are concrete. The low hipped roof has a hipped dormer, wide eaves, an open cornice and brackets. The full width screened front porch has brick walls, columns and a pier, all with concrete caps. The low hipped porch roof has wide eaves, wide fascia and brackets and extends into a porte-cochere.

United States Department of the Interior
National Park Service

National Register of Historic Places
Continuation Sheet

Section number 7 Page 69 Christian Ridge Historic District

342. 700 S. Harrison Street. Dutch Colonial Revival, c1920, C. Photo No. 36

This notable two story house has brick soldiers at the head of its foundation and is covered by multi-colored stretcher bond brick. The rectangular plan has wing additions. The one story additions on the north and south elevations have low, truncated roofs, wood railings, posts with finials and modern windows. There is an extension on the southern elevation that includes fluted pilasters. The lights are replacement windows. Metal shutters are present. The side gambrel roof contains two large shed dormers, wide eaves and an offset chimney. The entry porch has Doric columns and pilasters supporting a front gable with recessed arch, a sunburst and a hanging lantern. A multi-light door serves as the main entrance.

343. 650 S. Harrison Street. American Four-square, c1910, C.

The two and one half story clapboard house has a square plan on a brick foundation. Located at the rear of the house is a one story extension with a flat roof that serves as the floor of a balcony with wood posts and balustrade. The first floor lights are three over one double hung windows. The second story contains four over one double hung windows. A pair of ribbon windows are present in the hipped dormer. The medium hipped roof has medium eaves, an open cornice and brackets. The chimney is exterior. The full width front porch has brick walls, columns and piers, all with concrete caps, and a low half hipped roof with brackets and a wide fascia. The main entrance is a multi-light door with sidelights. The south elevation includes a large one story addition with a fireplace chimney. Metal shutters are present.

344. 552 S. Harrison Street. Craftsman, c1915, C.

A brick foundation supports the rectangular two and one half story house with vinyl oversiding. A vinyl belt course encircles the house above the foundation and below the second story windows. The lights are various and include two, three, four and six over one double hung windows and multi-lights in the half story. The medium cross gable roof has wide eaves, a vinyl boxed cornice and brackets. The full width front porch has brick walls and piers with concrete caps, square wood posts and a medium front gable roof with wide eaves, fascia and brackets. A one story extension with a shed roof is located on the south elevation.

345. 508 S. Harrison Street. Gable Front, c1900, C.

The rectangular plan of this two story clapboard house has a brick foundation. A wood belt course runs below the second story windows. The lights are one over one double hung windows. The window surrounds have entablature. The high front gable roof has two gable dormers, wide eaves, an open cornice, exposed rafters, knee braces and vergeboard. Clapboard and modern windows enclose the full width front porch. Paneled wood posts support the low front gable roof. A small one story extension with a shed roof is located on the south elevation.

346. 500 S. Harrison Street. Gable Front Bungalow, c1920, C.

The one and one half story board and batten clad house has a rectangular plan on a parged brick foundation. The lights are replacement windows. The medium front gable roof has gable dormers, wide eaves, a boxed cornice, medium returns and brackets. The chimney is centrally located. The full width open front porch has brick walls and columns with concrete caps supporting a half hipped roof. The main entrance is a multi-light door. At the rear of the house is an open shed roof porch.

347. 462 S. Harrison Street. Craftsman, c1915, C.

This two and one half story clapboard has a rectangular plan on a brick foundation. The lights are a combination of replacement and three over one double hung windows. The window surrounds have entablature. The medium cross

United States Department of the Interior
National Park Service

National Register of Historic Places
Continuation Sheet

Section number 7 Page 70 Christian Ridge Historic District

gable roof has wide eaves, an open cornice, knee braces and vergeboard. The full width open front porch has a brick foundation, a wood floor, brick piers with concrete caps, splayed wood posts and a wood balustrade. The porch roof is a medium front gable with medium eaves, knee braces, medium fascia and vergeboard. A modern door provides entrance into the house. The south elevation includes an attached one car garage.

348. 454 S. Harrison Street. American Four-square, c1915, C.

Photo No. 55

The square plan of this two story clapboard house rests on a brick foundation. Above the second story windows is a wood belt course. The lights are primarily replacement windows. The first floor has paired five over one double hung windows with a metal awning and a pair of ribbon windows occupy the attic area. The first floor window surrounds have entablature. The medium hipped roof with a hipped dormer has wide eaves, an open cornice and brackets. The chimney is offset. The full width front porch contains brick walls, piers and columns, all with concrete caps. The low, half hipped porch roof with wide fascia covers only the entrance. The south elevation has a one story extension that opens onto the front porch. The north ground level entrance has a half hipped cover on brackets. There is a one story extension located at the rear of the house.

349. 452 S. Harrison Street. Craftsman, c1920, C.

Photo No. 55

Vinyl oversiding covers this two and one half story house with a square plan on a brick foundation. The lights are three over one double hung windows. The medium hipped and cross gable roof has two hipped dormers, wide eaves, a vinyl boxed cornice and vinyl covered brackets. The south elevation contains a second story extension on brackets. The ground level entrance located on the north elevation has a half hipped roof on brackets. Also present is a shed roof, one story extension. The full width enclosed front porch has three over one double hung windows and paneled wood walls and a decorative metal security door. The porch's shed roof has a front gable with a pent roof.

350. 406 S. Harrison Street. Colonial Revival Cottage, c1920, C.

Photo No. 55

A row of soldiers tops off the brick foundation of this one story, rectangular house clad with aluminum oversiding. The lights are six over one double hung windows and multi-lights. Wood shutters are present. A semi-circular louver vent is situated in the gable ends. The high side gable roof has minimal eaves and small returns. The chimney is offset. The projecting front entry has a front gable and an outer arched double door with arched glass panes. The interior door is a panel wood door with a fan light.

351. 404 S. Harrison Street. American Four-square, c1910, C.

Photo No. 55

Narrow clapboard covers this square two and one half story house with a brick foundation. The lights are various and include three, four, five and eight over one double hung windows. The half story has replacement windows. The high hipped roof contains two eyebrow dormers, wide eaves and a boxed cornice. The ground level entrance on the south elevation has a half hipped hood on brackets. The flat roof of the one story extension at the rear of the house serves as a balcony with square wood piers and balustrade. The full width open front porch has brick walls and columns with concrete caps and a low half hipped roof with wide fascia and brackets. Metal shutters are present.

352. 402 S. Harrison Street. Gabled-ell, c1900, C.

Photo No. 55

A brick foundation underlies the L-plan of this two and one half story clapboard house. On the northern elevation the second story projects outward over the first floor and utilizes brackets for support. A wood belt course encircles the house above the first story windows. The lights are various and include three, four, and six over one double hung windows and multi-lights. The half story contains a ribbon window. The high hipped cross gable roof has wide eaves, an open

United States Department of the Interior
National Park Service

National Register of Historic Places

Continuation Sheet

Section number 7 Page 71 Christian Ridge Historic District

cornice, exposed rafters and knee braces. Flush gable and offset chimneys are present. The open porch in the "L" has brick columns and walls with concrete caps, a low half hipped roof with exposed rafters and brackets and a multi-light door.

353. 358 S. Harrison Street. American Four-square, c1910, C.

The square, two story narrow clapboard house has a rock-faced ashlar foundation. A wood belt course runs above the first floor windows and at the roof line. There is a slight projection of the second story on the front facade over the picture window. The lights are three over one double hung windows and a picture window with a lattice window transom. The medium hipped roof contains a hipped dormer, medium eaves and a boxed cornice. The full width front porch has a half hipped roof supported by square wood columns with medium fascia. Two modern door supply entrance into the dwelling.

354. 350 S. Harrison Street. Craftsman, c1915, C.

Brick supplies the foundation for this two and one half story house. Wide clapboard covers the first floor and narrow clapboard is used as oversiding on the second and half stories. A wood belt course encompasses the house above the first and second story windows. The lights are various. Included are a lozenge glass window, a picture window with a transom, a pair of ribbon windows in the half story, two and three over one double hung windows and replacement windows. The medium front gable roof with small cross gables has wide eaves, an open cornice, exposed rafters, knee braces and vergeboard. The northern elevation contains a one story extension with lozenge glass windows. A second one story extension is situated at the rear of the house and includes a deck. The full width open front porch has splayed paneled wood piers and columns and a wood railing. The low half hipped roof with a front gable over the entry has wide fascia and eaves and exposed rafters. A multi-light front door supplies entrance into the house.

355. 308 S. Harrison Street. American Four-square, c1910, C.

Narrow clapboard covers this square, two story house with a rock-faced ashlar foundation. A wood belt course encircles the house above the first and second story windows. The lights are primarily replacement windows. The remaining original windows are the picture window with a lozenge glass transom and a pair of fixed panes in the attic area. The medium hipped roof contains a hipped dormer, medium eaves and an open cornice. The chimney is centrally located. The full width open front porch incorporates square wood columns and a wood balustrade with turned wood posts and cannonballs. The half hipped porch roof has wide fascia. The half glass front door contains modern art glass.

356. 306 S. Harrison Street. Pyramidal Bungalow, c1920, C.

The rectangular plan of this one story house covered with wide aluminum oversiding rests on a rock-faced ashlar foundation. The lights include a picture window with a lozenge glass transom, one over one double hung windows and a pair of fixed panes in the dormers. The medium hipped roof has hipped dormers, medium eaves and a boxed cornice. The chimney is offset. The partial width open front porch has decorative metal posts and railings, a concrete floor supported by a concrete block foundation and a half hipped roof.

East side of South Harrison Street

357. 757 S. Harrison Street. J. William Goodwin House. Tudor Revival, c1920, C.

Photo No. 35

The rectangular, two story brick house with a brick foundation displays half-timbering and patterned brickwork on the second story. The various lights include casement and lattice windows, and multi-lights. The windows have rowlock

United States Department of the Interior
National Park Service

National Register of Historic Places

Continuation Sheet

Section number 7 Page 72 Christian Ridge Historic District

brick sills and brick soldiers as lintels. The high hipped cross gable roof features overlapping front gables, hipped dormers, minimal to medium eaves and a boxed cornice. The front gable/facade slightly project outward. The prominent front gable contains a hipped dormer. The door surround of the main entrance incorporates quoins. A wood door with a small lattice window provides access to the interior of the house. There is an addition located on the northern elevation and a rear one story sunroom with a flat roof and balcony. Both a central and flush gable chimney are present with the latter embellished with quoins.

358. 701 S. Harrison Street. James Himmelwright House. Colonial Revival, c1920, C. Photo No. 35

Brick soldiers top the foundation of this two story, rectangular house covered with stretcher bond brick. At the beginning and end of every fourth row of bricks on the front facade are two brick quoins. The lights are six over six double hung windows with a pair of one over one double hung windows present in the second story. Rowlock bricks form the window sills. Dual fan shaped vents are present in the gable ends. The high side gable roof has minimal eaves, a medium frieze with dentils, and wide returns. The entry porch features a triangular pediment with dentils, square, fluted wood columns and paneled wood walls. A wood panel door provides entrance into the house. There is an addition at the rear with a connecting hyphen. Wood shutters are present. The chimney is flush gable.

359. 651 S. Harrison Street. Craftsman, c1915, C.

Vinyl oversiding covers this two and one half story, rectangular house with a brick foundation. The lights are six and eight over one double hung windows. The high side gable roof has wide eaves, a boxed cornice and wide returns. The chimney is centrally located. The full width open front porch has brick walls, a pier and columns, all with concrete caps, and a half hipped roof with wide eaves. The wood front door contains upper multi-lights. Wooden slat shutters are present.

360. 509 S. Harrison Street. American Four-square, c1910, C. Photo No. 57

A brick foundation underlies this square, two story house oversided with vinyl. The lights are primarily one over one double hung windows, but include a lozenge glass window and a single fixed pane. The medium hipped roof contains a hipped dormer, wide eaves, a boxed cornice and an offset chimney. The full width enclosed front porch has brick walls, a pier and columns, all with concrete caps and a half hipped roof. Both a metal security door and a half glass door are present. The door surround includes sidelights.

361. 501 S. Harrison Street. Queen Anne Cottage, c1900, C. Photo No. 57

The irregular plan of this one and one half story vinyl clad house has a brick foundation. The lights are primarily replacement windows with fixed single panes in the half story. The high hipped cross gabled roof has medium eaves, an open cornice, exposed rafters and vergeboard. The chimney is offset. The open porch has turned wood posts and a half hipped roof. There is a shed roof addition with a gable hood on brackets.

362. 459 S. Harrison Street. T-plan, c1900, C.

A parged brick foundation underlies this two story T-plan house clad with vinyl oversiding. The lights are replacement windows. The high cross gable roof has medium eaves and a vinyl boxed cornice. A one story cutaway corner is present in the porch area. The open porch has square wood posts and a half hipped roof. Multiple additions are present.

United States Department of the Interior
National Park Service

National Register of Historic Places

Continuation Sheet

Section number 7 Page 73 Christian Ridge Historic District

363. 451 S. Harrison Street. Gable Front, c1900, C.

This two and one half story clapboard house has a rectangular plan with a northern extension on a rock-faced ashlar foundation. The extension has a cutaway corner on the first floor. The lights are a combination of one over one double hung windows, fixed single panes and a two over two double hung picture window. The window surrounds have entablature. The high cross gable roof has medium eaves, an open cornice and vergeboard. The chimney is centrally located. The full width open front porch has Tuscan columns, a twisted metal railing and a half hipped roof. Additions are situated at the rear of the house.

364. 407-409 S. Harrison Street. T-plan, c1900, C.

Vinyl oversiding covers the two story T-plan house with a brick foundation. The lights are replacement windows. The front gable of the medium cross gable roof has a jerkin head. The U-shaped wrap-around porch has a wood railing frieze and turned wood posts that support a half hipped roof. Doors are located at each end of the U. The door surrounds have transoms. Multiple additions are located at the rear of the house.

365. 403 S. Harrison Street. Queen Anne, c1900, C.

A parged brick foundation supports the cross plan of the two story shiplap clad house. There is a shed extension on the north elevation. The lights are primarily replacement windows, but a six over one picture window is present. The window and door surrounds have entablatures. The high cross gable roof has medium eaves, an open cornice, exposed rafters and barge board with small pendants. The open front porch has turned wood posts, a wood railing frieze and spindlework struts. A half glass door provides entrance into the house. Multiple additions are located at the rear of the house.

366. 357 S. Harrison Street. Craftsman, c1920, C.

The brick foundation of this two story, rectangular house features a row of soldiers at its head. Stretcher bond brick covers the walls. The lights are nine over one double hung windows that appear singly and in groups. Rowlock brick form the sills. The one story extension situated on the south elevation has a shed roof, picture windows and multi-lights. The medium side gable roof has front and back shed dormers, wide eaves, an open cornice, exposed rafters and knee braces. The chimney is centrally located. The front entry porch has a curvilinear wood hood on splayed wood posts on brick piers with concrete caps. Concrete steps with a decorative metal railing provide access to the porch. The main entrance is a multi-light door.

367. 353 S. Harrison Street. T-plan, c1900, C.

The two story clapboard house has a T-plan on a concrete block foundation. The lights include a dual pane picture window with a lozenge glass transom and a large fixed pane window located in the second story. The window surrounds include entablature. The high cross gable roof has medium eaves, an open cornice, exposed rafters and barge board with small pendants. Metal shutters are present. The open side porch has a shed roof and decorative metal posts and railing. There are additions at the rear of the house.

368. 309 S. Harrison Street. Free Classic, c1900, C.

The irregular plan of this vinyl clad, two and one half story house rests on a parged brick foundation. The south elevation has a cutaway corner. The lights are primarily replacement windows, but the north elevation features a half story Palladian window, as well as a pair of fixed panes located in the half story of the front facade. The high cross gable roof has medium eaves, a vinyl boxed cornice and small returns. Both central and offset chimneys are present. The open front

United States Department of the Interior
National Park Service

National Register of Historic Places

Continuation Sheet

Section number 7 Page 74 Christian Ridge Historic District

porch with a modern wood railing replaces the original porch. There is a shed roof over the modern front door. Multiple additions are situated at the rear of the dwelling.

369. 303 S. Harrison Street. Italianate, c1880, C.

Simulated brick asphalt shingle covers the two story rectangular house on a brick foundation. The lights are narrow one over one double hung windows with concrete lintels. The north elevation bay window has a bellcast mansard roof. The medium hipped roof has wide eaves and a boxed cornice. The chimney is centrally located. The full width front porch is partially enclosed with asphalt shingle walls and has a half hipped roof with wide fascia supported by Tuscan columns. A wood balustrade is present. The porch is a later addition to the house. The door surround includes a transom. The main entrance is a modern door. There is a shed roof addition at the rear of the house and an attached garage.

370. 257 S. Harrison Street. Pyramidal Bungalow, c1920, C.

Rock-faced ashlar provides the foundation for the rectangular plan of this one story house covered with asbestos shingle. The lights include a picture window with a lozenge glass transom, one over double hung windows and a pair of fixed panes in the attic. The window surrounds have entablature. The medium hipped roof has three hipped dormers, wide eaves and a central chimney. The full width open front porch has a wood railing and a half hipped roof supported by slender Tuscan columns. A glass door provides entrance into the house. There is an attached garage.

371. 255-255 ½ S. Harrison Street. Queen Anne, c1900, C.

Shiplap vinyl oversiding covers the walls of this two story irregular plan house on a parged brick foundation. The lights are replacement windows. The high cross gable roof has medium eaves, a vinyl boxed cornice and small returns. The projecting front gable has a one story cutaway corner with entries on either side of the cutaway. The main entrance is modern with a storm door. The south elevation includes a shed roof addition. No porch is present.

372. 251 S. Harrison Street. Gabled-ell, c1900, C.

The two story L-plan house has a brick foundation and is clad with shiplap vinyl oversiding. The lights are primarily one over one double hung windows. A Queen Anne sash is present in the first story along with some replacement windows. The high cross gable roof has medium eaves and a vinyl boxed cornice. There is a flush gable chimney. The dwelling includes a cutaway corner and a wrap-round open porch with turned wood posts and lattice panel walls. Only the bottom rails of the suspended frieze remain.

West side of South Clay Street

373. 700 S. Clay Street. Tudor Revival, c1940, C.

The one and one half story, rectangular plan house has a concrete block foundation. Broken range ashlar covers the front facade and aluminum oversiding covers the other three walls. The lights are a combination of casement windows and fixed panes, both with concrete sills and metal awnings. The high cross gable roof has medium eaves. The chimney is prominently situated on the front facade and has chimney pots. A shed roof on brackets covers the entry stoop with metal railings. A wood panel door with a fan window provides the main entrance into the house. There is a full width addition at the rear of the structure with a large shed dormer.

United States Department of the Interior
National Park Service

National Register of Historic Places
Continuation Sheet

Section number 7 Page 75 Christian Ridge Historic District

374. 656 S. Clay Street. Craftsman, c1920, C.

A brick foundation underlies the two story, rectangular house with stretcher bond brick oversiding. The lights are various and include multi-lights and fixed panes on the first floor and one over one double hung second and half story windows. An opalescent art glass window is also present. Rowlock bricks form the sills and brick soldiers serve as lintels. Two sets of French doors on the front facade open onto a concrete deck with brick piers at one end. The high side gable roof has overlapping gables on the south elevation, minimal eaves, a boxed cornice and medium returns. The two gable dormers on the front facade have balustrades on brackets and metal railings. The northern elevation ground level entrance has a half hipped metal hood on brackets. The south elevation has a two story extension. There is a one story sunroom at the rear of the house, as well as an addition. Multi-light doors provide entrance to the house. Canvas awnings cover the windows. The chimney is flush with the gable end.

375. 654 S. Clay Street. Craftsman, c1920, C.

Stretcher bond brick covers the two story, rectangular house. The brick foundation has a row of soldiers at its head. The lights are multi-lights over one double hung windows and opalescent art glass. Brick soldiers serve as lintels and rowlock bricks form the sills. The front facade includes window boxes on brackets. The medium hipped roof has wide eaves. On the south elevation is located a one story sunroom with casement windows with a deck defined by brick walls with concrete caps and a side door. The main entrance is a wood panel door. The entry porch features triple square wood columns on brick piers with concrete caps which supports a flat roof and wide fascia. The flat roof serves as the floor for a balcony, the perimeter of which is circumscribed by a wood railing and square wood piers.

376. 650 S. Clay Street. Craftsman, c1920, C.

A brick foundation underlies this rectangular, two story, vinyl clad house. A vinyl belt course runs below the second story windows. The lights are various and include three and four over one double hung windows. The door surround has sidelights. The medium front gable roof has wide eaves, a vinyl boxed cornice, brackets and medium returns. The chimney is centrally located. The partial width open front porch has a medium front gable roof, medium eaves, dentils and small returns. Splayed wood columns with a wood balustrade support the roof. Entry to the porch is from the north side. The north elevation contains a two story addition. The ground level entrance of the north elevation has a half hipped roof on brackets and exposed rafters. The one story extension at the rear of the house has a flat roof surmounted by square wood piers and a balustrade. Metal shutters are present. There are multiple additions at the rear of the house, as well as a fireplace chimney.

377. 608 S. Clay Street. T-plan, c1900, C.

Wide aluminum oversiding covers the one story T-plan house on a rock-faced ashlar foundation. The lights are replacement windows. There is a fan window and vent in the attic area. The high cross gable roof has minimal eaves. Modern wood panel shutters, window surrounds with entablature, and wood panel doors, one with upper multi-lights, are part of the recent refurbishing of the house. A sunroom with a very low shed roof, square wood piers and balustrade is situated on the north elevation. There is an addition at the rear of the house.

378. 600 S. Clay Street. T-plan/Craftsman, c1900, C.

The two story clapboard house has a T-plan on a parged brick foundation. The various lights include casement windows and six over one double hung windows. The window surrounds have entablature. The high cross gable roof has jerkin heads, vergeboard, wide eaves, an open cornice, exposed rafters and knee braces. The jerkin head gable of the south elevation has a secondary peaked gable extended over a six over one double hung window. The open porch has paneled

United States Department of the Interior
National Park Service

National Register of Historic Places

Continuation Sheet

Section number 7 Page 76 Christian Ridge Historic District

wood piers and columns that support the half hipped roof with exposed rafters. A multi-light door supplies entrance to the house. A one story addition is located on the south elevation and there are multiple additions situated on the north elevation.

379. 558 S. Clay Street. J. Russell Kramer House. Craftsman, c1915, C.

The rectangular plan of this two story, narrow vinyl clad house has a brick foundation. The lights are replacement windows. The medium front gable roof has a gable dormer on the south elevation, wide eaves, a vinyl boxed cornice and brackets. The chimney is centrally located. Modern windows enclose the full width, shed roof front porch constructed with brick walls, piers and columns, all with concrete caps. A two car garage is attached to the rear of the house.

380. 554 S. Clay Street. Craftsman Bungalow, c1920, C.

A brick foundation underlies this rectangular, two story house covered with clapboard on the first floor and wood shingle oversiding on the second story. A wood belt course encircles the house above the first story windows. The lights are a combination of four and six over one double hung windows. The second story window surrounds have entablature. The medium side gable roof has front and back gable dormers, wide eaves, an open cornice, exposed rafters and knee braces. Bracing is present in the gables. The front facade gable dormer is recessed into the roof and has a false balcony made of wood shingle piers with wood caps. The front slope of the roof extends over the full width open front porch with brick walls with concrete caps and slender square wood posts. A wood panel door with upper multi-lights provides entrance into the house. The north elevation contains a ground level entrance.

381. 552 S. Clay Street. Craftsman Bungalow, c1920, C.

The L-plan of this one story clapboard house has a brick foundation. The lights are various and include casement, multi-lights, and three and four over one double hung windows. The window and door surrounds have entablature. The medium cross gable roof has jerkin heads, overlapping side gables, wide eaves, an open cornice and exposed rafters. The chimney is offset. The front stoop has paneled wood columns. A multi-light door gives access to the interior. There is a shed roof extension on the north elevation with a half glass door and a shed roof addition at the rear of the house.

382. 508 S. Clay Street. Queen Anne Cottage, c1900, C.

The one story vinyl clad house with a cutaway corner has an irregular plan on a parged brick foundation. The lights are one over one double hung windows. The high hipped and cross gable roof has medium eaves, and open cornice and vergeboard. The front stoop has a gable hood on brackets. Entrance is provided by a modern panel door with a fanlight. There are multiple additions at the rear of the house.

383. 502 S. Clay Street. Queen Anne, c1900, C.

The foundation of this irregular plan, two story stucco house is obscured by its oversiding. The lights are replacement windows. The front facade window surrounds have stone lintels and sills. The high hipped cross gable roof has narrow eaves, an open cornice and vergeboard. The wrap-around porch has turned wood posts, a lattice panel skirt, a half hipped roof and narrow fascia. The three quarters glass door contains modern art glass. There are additions and an attached garage at the rear of the house.

384. 456 S. Clay Street. Coulter House. Dutch Colonial Revival, c1915, C.

The two and one half story rectangular house has a brick foundation, brick oversiding on the first story and wood shingles on the second story. The first floor windows are replacements. The second story lights are six over one double

United States Department of the Interior
National Park Service

National Register of Historic Places

Continuation Sheet

Section number 7 Page 77 Christian Ridge Historic District

hung windows. Rowlock bricks form the window sills and wood shutters flank the windows. The half story contains multi-lights. The high gambrel roof incorporates two large shed dormers, medium eaves, wide returns and a boxed cornice. An exterior flush gable chimney is present. The enclosed brick entrance projects from the southern elevation and has a modern door. There is an addition and an attached two car garage at the rear of the house.

385. 452 S. Clay Street. George Thompson House. Queen Anne, c1880, C.

Featured in the 1895 women's edition of *Frankfort Illustrated* is this notable two and one half story vinyl clad house with an irregular plan on a brick foundation. A picture window with a lozenge glass transom, half story fixed multi-lights, and one over one double hung windows make up the lights. The south elevation incorporates a two story cutaway bay window. The high cross gable roof with medium eaves and a vinyl boxed cornice contains a square half story turret with a high bellcast hipped roof and three over one double hung windows. The full width front porch is partially enclosed with louvered windows. A wood balustrade defines the open portion of the porch. Tuscan columns support the half hipped roof. The north elevation includes a side porch with Tuscan columns. Located at the rear of the house are multiple additions.

386. 408 S. Clay Street. Dr. Guy Bergen House. Tudor Revival, 1929, C.

Photo No. 29

Designed by the architect Rodney Leonard, this outstanding two and one half story rectangular house with a brick foundation is oversided with brick and wood shingles. The second story flares out over the first and there are wood belt courses between the second and half stories and above the half story windows. The lights are various and include casement, lattice, and six over one double hung windows and multi-lights. Some replacement windows are present. The sills are made of rowlock bricks. The high cross gable roof has a gable dormer, minimal eaves, exposed rafters, an open cornice and vergeboard. The forward slope of the roof extends over the partial width open front porch with brick walls and columns with concrete caps. The main entrance is a wood door with an flattened Gothic arch with a multi-light window. The ground level entrance located on the south elevation has a flat roof hood on large brackets and is anchored with chains emanating from the second story. The one story extension located at the rear of the house has a flat roof surmounted by a wood balustrade. The chimney is offset.

387. 400 S. Clay Street. Italianate, c1880, C.

This two story vinyl clad house has a square plan with extensions on a brick foundation. The lights are a combination of one over one double hung windows and multi-lights. The medium hipped roof has wide eaves and a vinyl boxed cornice. Both an offset and exterior chimney are present. The partial width open front porch has a half hipped roof supported by decorative metal posts with a twisted metal railing. The wood panel door provides access to the interior of the dwelling. The north elevation contains a two story extension. Located on the south elevation is a one story addition.

388. 358 S. Clay Street. Free Classic, c1900, C.

A rock-faced ashlar foundation underlies this notable irregular plan, two and one half story vinyl clad house. A picture window with a lozenge glass transom and one over one double hung windows make up the primary lights of the dwelling. The south elevation contains a second story bay window over a first story bow window with lozenge glass transoms. The half story features fan windows in the north and east gables. The high cross gable roof has medium eaves, a vinyl boxed cornice and an offset chimney. The front gable has wide returns. The side gables have pent roofs. The full width open front porch paired and single Ionic columns of varying heights, coursed ashlar piers with concrete caps and a low half hipped roof with a pedimented front gable, wide frieze and wood balustrade. The main entrance is a three-quarter glass door with a spindlework storm door. The rear entry porch has Tuscan columns and a wood railing.

United States Department of the Interior
National Park Service

National Register of Historic Places
Continuation Sheet

Section number 7 Page 78 Christian Ridge Historic District

389. 354 S. Clay Street. Ranch, c1950, C.

The front facing U-plan of this one story house rests on a concrete foundation. Wood planks and brick overside the house. The lights include a picture window flanked by multi-lights, and six over six and eight over eight double hung windows. The medium cross gable roof has minimal eaves, small returns and a boxed cornice.

390. 302 S. Clay Street. American Four-square, c1910, C.

Rock-faced brick supplies the foundation of this square, two story house oversided with narrow vinyl. The south elevation has a modest two story extension. The one story extension at the rear has a second story addition. The lights are one over one double hung windows. The medium hipped roof has a hipped dormer with paired multi-lights, medium eaves and a vinyl boxed cornice. The chimney is offset. The full width front porch has brick walls and columns with concrete caps. The low half hipped roof has medium fascia and a front gable over the entry. The chimney is offset.

391. 300 S. Clay Street. American Four-square, c1910, C.

Narrow vinyl covers this square, two story house with three over one double hung windows. The medium hipped roof has a hipped dormer with paired ribbon windows, wide eaves and an open cornice. The chimney is offset. The full width front porch has brick walls, piers and columns, all with concrete caps. Modern windows and plastic enclose the porch. The ground level entrance of the southern elevation has a modern storm door and a half glass door. There is a one story extension located at the rear of the house.

392. 262 S. Clay Street. T-plan, c1890, C.

This one story T-plan house on a parged brick foundation is covered by wide aluminum oversiding. The lights are replacement windows. The high cross gable roof has medium eaves, an open cornice, exposed rafters and beams, and vergeboard. An extension of the southern slope of the front gable provides a shed roof for an entry porch with decorative metal posts. A modern wood panel door serves as the main entrance.

393. 258 S. Clay Street. Queen Anne, c1885, C.

The two story T-plan house has a parged brick foundation. Vertical plank covers the first floor of the front facade. The rest of the house is oversided with vinyl. The south elevation features a one story cutaway corner with corner brackets. A picture window with a transom and one over one double hung windows are the primary lights. The high cross gable roof has medium eaves, an open cornice, exposed rafters and vergeboard. The south gable has a fixed diamond pane window and the north gable contains an oculus. The wrap-around porch has turned wood posts, spindlework struts with a pinwheel device and a half hipped roof with a front gable. The struts form an arch with a pendant over the entry. Coffered panels infill the gable. The half glass door has a transom. At the rear of the house are multiple additions.

394. 256 S. Clay Street. Fire Department Barn and Staff Parking Lot. Contemporary, c1980, NC.

395. 52 S. Clay Street. American Four-square, c1910, C.

A brick foundation supports this two story square house covered in wide and narrow clapboard. Wide wood belt courses encircle the house at the foundation and at the roof line. A medium wood belt course runs below the second story windows. The various lights include a picture window with a lozenge glass transom, and three and four over one double hung windows. The first floor window surrounds have entablature. The medium hipped roof has a hipped dormer, wide eaves and a boxed cornice. The full width front open porch has brick walls, columns and a pier, all with concrete caps, wide fascia and arched spandrels. Located on the northern elevation is a two story extension and two ground level entrances. At the rear of the house is a one story extension with a flat roof which serves as the floor of a balcony with

United States Department of the Interior
National Park Service

National Register of Historic Places
Continuation Sheet

Section number 7 Page 79 Christian Ridge Historic District

square wood piers and balustrade. This extension merges with an addition.

396. 10 S. Clay Street. Gabled-ell, c1900, C.

Vinyl oversiding obscures the foundation of this L-plan two story house with extensions. The lights are replacement windows. The high cross gable roof has a gable dormer, narrow eaves and a vinyl boxed cornice. The south side gable has a jerkin head. The front facade contains a small one story extension with a half hipped roof. The north elevation incorporates first floor cutaway corners. The shed roof open porch has square wood posts and vinyl walls.

West side of North Clay Street

397. 52 N. Clay Street. Gabled-ell, c1900, C.

The two story L-plan house has a brick foundation and is covered with wide vinyl oversiding. The lights are one over one double hung windows. The high cross gable roof has medium eaves and a vinyl boxed cornice. The shed roof side porch has square wood columns and railing. A multi-light transom is located over the main entrance. The east elevation has a front gable hood on square wood columns over the secondary entrance. Multiple additions are located at the rear of the house.

East side of South Clay Street

398. 659 S. Clay Street. Split-level, c1950, C.

A coursed rock-faced ashlar foundation supports the L-plan of this one story house covered with rock-faced ashlar and vinyl oversiding. The lights are a picture window with multi-lights and two over two double hung windows. The low cross gable roof has wide eaves, a boxed cornice and an offset chimney. The vinyl split level is located over the one car garage. A wood front door with sidelights provides entrance in to the house. In front of the picture window is a rock-faced ashlar raised flower bed.

399. 651 S. Clay Street. Gable front, c1930, C.

Shiplap vinyl covers this one and one half story rectangular house on a rock-faced concrete block foundation. The lights are replacement windows. The medium front gable roof contains two gable dormers and has wide eaves, medium returns and a boxed cornice. The chimney is centrally located. The front gable has a pent roof. Wood panel shutters are present. The full width front porch has a low half hipped roof on square, fluted wood columns linked by a metal railing. The main entrance is a three quarter glass and wood panel door. An addition is situated at the rear of the house.

400. 609 S. Clay Street. T-plan, c1890, C.

Wide aluminum oversiding covers this two story T-plan house on a parged brick foundation. The lights are replacement windows. The high cross gable roof has medium eaves, an aluminum boxed cornice and small returns. The c1910 open porch has brick walls and columns with concrete caps and a medium front gable roof with wide eaves and small returns. A multi-light storm door and a half glass door provide access to the interior of the house. The entry is enclosed and juts out into the porch area. Situated at the rear of the house are multiple additions.

401. 601 S. Clay Street. Ella Groves House. T-plan, c1900, C.

A brick foundation underlies the T-plan of this two story house covered with asbestos shingle. The lights are one over one double hung windows and multi-lights. The window surrounds have entablature. The high cross gable roof has

United States Department of the Interior
National Park Service

National Register of Historic Places

Continuation Sheet

Section number 7 Page 80

Christian Ridge Historic District

medium eaves, an open cornice, exposed rafters and vergeboard. The wrap-around porch has vinyl walls, square wood posts, wide eaves, exposed rafters and a half hipped roof. Honeycomb brickwork provides the foundation for the porch. The door surround contains a transom. The enclosed main entry projects outward into the porch area. At the rear of the house are multiple additions.

402. 553 S. Clay Street. T-plan, c1890, C.

This clapboard two story house has a T-plan on a brick foundation. The lights are one over one double hung windows. The window surrounds have entablature. The high cross gable roof has medium eaves, an open cornice, brackets and exposed beams. The open side porch has turned wood posts with brackets, a cutout ball flower frieze and a shed roof with sawtooth siding. Two doors open out onto the porch. One is an arched half glass door and the other is a modern door. Both door surrounds have transoms. There are multiple additions to the house.

403. 507 S. Clay Street. T-plan, c1890, C.

This one and one half story T-plan house has a rock-faced ashlar foundation. Asbestos shingles cover the walls. The lights are one over one and multi-lights over multi-lights double hung windows. The window surrounds have entablature. The high cross gable roof has medium eaves, a vinyl boxed cornice and vergeboard. An exterior concrete block chimney is present. The wrap-around porch has a half hipped roof with decorative metal posts. There are two doors with transoms and entablature. Additions to the main structure are situated at the rear of the house.

404. 501 S. Clay Street. T-plan, c1910, NC.

A parged brick foundation support this one and one half story T-plan house covered by aluminum and vinyl oversiding. The lights are replacement windows. The high cross gable roof has medium eaves and an aluminum boxed cornice. The wrap-around porch has a low half hipped roof and decorative metal posts. Located at the rear of the house are multiple one and two story additions that significantly alter the house. For this reason the property is non-contributing.

405. 459 S. Clay Street. Queen Anne Cottage, c1910, NC.

Narrow vinyl oversiding covers the one story house with a brick foundation. The lights are replacement windows. Located on the front facade is a one story bay window. The high hipped cross gable roof has narrow eaves and a vinyl boxed cornice. Extensive modifications and additions render this property non-contributing.

406. 453 S. Clay Street. Free Classic, c1900, C.

Photo No. 30

The irregular plan of this notable two and one half story house rests on a brick foundation. Clapboard covers the walls with aluminum oversiding flaring out over the foundation. A wood belt course encircles the house above the first story windows. Wood panels separate the second story windows on the front facade. The window surrounds are plain. The lights are primarily replacement windows. Situated on the front facade is a bay window with a half hipped bellcast roof with a boxed cornice. The high hipped cross gable roof has narrow eaves and an open cornice. The north and south gables feature sunbursts, Queen Anne sashes, imbrication, wood panels and pent roofs. The front gable displays a sunburst, imbrication and a pent roof. The north elevation side porch has a shed roof with imbrication and fan, turned wood posts, arched spandrels and ball and spindles. A multi-light storm door and wood panel door provide access into the house. The south elevation stoop has a bellcast gable roof on knee braces, a multi-light door and a half glass storm door. The second story small porch has a wood balustrade, turned wood posts, arched spandrels, ball and spindles, imbrication and fan. Located at the rear of the house is a one story addition.

United States Department of the Interior
National Park Service

National Register of Historic Places
Continuation Sheet

Section number 7 Page 81 Christian Ridge Historic District

407. 409 S. Clay Street. Harry Sheridan House. Queen Anne/Stick, c1880, C. Photo No. 28

A photograph of this outstanding two and one half story clapboard house appeared in the 1895 women's edition of *Frankfort Illustrated*. A brick foundation underlies its irregular plan. Stickwork covers the house. The lights are primarily one over one double hung windows, but also include a picture window flanked by multi-lights and large fixed panes in the gables. The high hipped cross gable roof has medium eaves, an open cornice, exposed rafters and barge board. The overlapping front gables have half-timbering above and fishscale imbrication below the fixed pane. The side gables have paired fixed panes flanked by fans with half timbering above and feather cut imbrication below the windows. The rear gable also displays feather cut imbrication. The full width screened in front porch has a shed roof with an offset gable over the entry, chamfered wood posts, arched and straight scroll-sawn spandrels. Wood shutters are present. Additions are located at the rear of the house.

408. 401 S. Clay Street. Ranch, c1980, NC.

This one story rectangular house covered with aluminum oversiding rests on a concrete foundation. The lights are one over one double hung windows. The low hipped roof has wide eaves and a boxed cornice. The main entrance has a stoop and a wood door with multi-lights. There is an attached garage at the rear. Due to its recent construction this house is non-contributing.

409. 357-355 S. Clay Street. Queen Anne Cottage, c1900, C. Photo No. 25

A brick foundation underlies the irregular plan of this one and one half story shiplap house. The front facade contains a cutaway corner. The lights are primarily one over one double hung windows with large fixed panes in the half story. The window and door surrounds have entablature. The high hipped cross gabled roof has medium eaves, an open cornice, brackets and barge board. The partial width open porch may have once wrapped around the house with the south end now enclosed with casement windows and shiplap oversiding. The porch has brick piers with concrete caps, slender Tuscan columns and a wood balustrade. The door surround features sidelights and entablature. Located on the north elevation is a flat roof entry porch with exposed rafters, turned wood posts and a wood railing. At the rear of the house are multiple additions.

410. 351 S. Clay Street. Queen Anne, c1910, C. Photo No. 25

The irregular plan of this two story vinyl clad house sits on a brick foundation. The lights are primarily one over one double hung windows. A picture window with a multi-light transom and a fixed single pane are also present. The high hipped cross gable roof has narrow eaves, a vinyl boxed cornice, small returns and two offset chimneys. The side gables have pent roofs. The open front gable entry porch on square wood posts projects outward from the front facade.

411. 307 S. Clay Street. Free Classic, c1890, C. Photo No. 25

This two and one half story house has an irregular plan on a brick foundation. Narrow vinyl oversiding covers the walls. The first story flares out over the foundation and the second story extends out over the first. The house features cutaway corners. A casement window, a picture window with a lattice transom, fixed panes and Queen Anne sashes, and one over one double hung windows make up the various lights. The high hipped cross gable roof, with parallel gables on the front facade, has narrow eaves and a vinyl boxed cornice. The side gables have jerkin heads. The primary front gable has wide returns. The secondary gable includes a pent roof and an oculus. The south elevation has a one story bay window. The open wrap-around porch has double and triple square wood posts which support a low half hipped roof with a small front gable over the entrance. The north corner of the porch is screened. A half glass door with a transom serves as the main entrance. Located at the rear of the house is a one story addition.

United States Department of the Interior
National Park Service

National Register of Historic Places
Continuation Sheet

Section number 7 Page 82 Christian Ridge Historic District

412. 301 S. Clay Street. Queen Anne, c1890, C. Photo No. 25

A parged brick foundation supports the irregular plan of this two and one half story clapboard house. Wood belt course run above the first and second story windows. The lights are primarily one over one double hung windows, but also include Queen Anne sashes. The high cross gable roof has narrow eaves, an open cornice, exposed rafter and brackets. The north elevation features parallel gables with medium eaves, bracing and vergeboard. Imbrication fills the gables. The wrap-around open porch has rubblestone ashlar piers with concrete caps and slender Tuscan columns. There is a bow corner in the porch area. Two half glass doors with transoms provide access to the interior of the house. A 1906 photograph shows the one story rear addition. A second story addition with casement windows was built above the at a later date.

413. 257 S. Clay Street. Contemporary, c1980, NC.

The rectangular brick and vinyl oversided building serves as a fire barn for the Frankfort Fire Department and is a non-contributing property.

414. 201 S. Clay Street. Contemporary, c1980, NC.

Photo No. 23(far right, on corner)

The rectangular brick and vinyl oversided building serves as the Fire Chief's Headquarters and is a non-contributing property.

415. 51 S. Clay Street. Craftsman Bungalow, c1920, C.

The two story clapboard house has a rectangular plan on a brick foundation. The first story flares out over the foundation. There are wide wood belt courses above the first and second story windows. The lights include two picture windows with lozenge glass transoms, a lozenge window with a cartouche, and three and four over one double hung windows. The medium side gable roof has front and rear gable dormers, wide eaves, an open cornice, exposed rafters, brackets and a central chimney. The full width open front porch has brick walls, piers and columns, all with concrete caps, square wood columns on the piers and arched spandrels. The wood front door features dentils and arrowhead lights. The rear entrance is a half glass door. The ground level entrance on the north elevation contains a half glass door and the door surround includes entablature.

East side of North Clay Street

416. 51 N. Clay Street. Prairie School, c1920, C.

A brick foundation underlies this rectangular two story vinyl clad house. The lights are replacement windows. The medium hipped roof has wide eaves and vinyl boxed cornice. The full width front porch has brick walls and piers with concrete caps, square wood posts and a shed roof. Modern windows enclose the porch. The one story addition at the south end of the porch wraps around to the southern elevation which includes a two story extension. Wood shutters dress the house.

417. 55 N. Clay Street. Gabled-ell, c1900, C.

The L-plan of this two story vinyl shiplap covered house rests on a parged brick foundation. The lights are replacement windows. The high cross gable roof has medium eaves and a vinyl boxed cornice. The stoop entry contains a modern door. There are multiple additions at the rear of the house.

West side of Aughe Street (no resources)

United States Department of the Interior
National Park Service

National Register of Historic Places
Continuation Sheet

Section number 7 Page 83

Christian Ridge Historic District

East side of Aughe Street

418. 53 Aughe Street. Ranch, c1960, NC.

The one story L-plan broken range ashlar house has a low hipped roof with medium eaves, a curved entry stoop with decorative metal posts, metal awnings and an attached one car garage. The recent construction of the house renders the property non-contributing.

West side of South East Street

419. 658 S. East Street. Charles B. Compton House. American Four-square, c1910, C. Photo No. 60

The square, two and one half story house has a brick foundation. The various lights include a seven over one picture window, three and four over one double hung windows, ribbon windows and replacements. The medium hipped roof has hipped dormers, wide eaves and a vinyl boxed cornice. Located on the south elevation is a rectilinear bay window with a half hipped roof. The full width screened front porch features honeycomb brickwork walls, and coursed piers and columns, all with concrete caps. A multi-light storm door gives entrance to the porch. Metal shutters frame the windows. The one story extension at the rear of the house has been converted to two stories and an attached one car garage has also been added.

420. 650 S. East Street. Craftsman, c1910, C. Photo No. 60

The two story clapboard house has a rectangular plan on a brick foundation. A wood belt course runs above the second story windows. The various lights include ribbon, replacements and three over one double hung windows. The window surrounds have entablature. The medium side gable roof has wide eaves, a boxed cornice, knee braces and an offset chimney. The partial width, open front porch has a metal railing around the deck area and a front gable hood on Tuscan columns over the entry. The gable features bracing, vergeboard, exposed rafters and an open cornice. The main entrance to the house is a wood panel door with upper multi-lights and sidelights. The ground level entrance on the north elevation has a metal awning, decorative metal posts and railing. The south elevation contains a one story addition. Wood panel shutters are present.

421. 510 S. East Street. Gable Front Bungalow, c1920, C.

Parged concrete block forms the foundation of this rectangular, one story house covered with shiplap vinyl oversiding. Two picture windows with transoms, ribbon windows and three over one double hung windows make up the lights. The medium front gable roof has wide eaves, a vinyl boxed cornice and small returns. The chimney is offset. The full width screened front porch has a shed roof on square wood posts and vinyl walls. The wood front door contains upper multi-lights. The south elevation entrance has a multi-light storm door and a half glass door.

422. 452 S. East Street. Gabled-ell Cottage, c1940, C.

The one story L-plan house rests on a concrete block foundation. Shiplap vinyl oversiding covers the walls. The lights are one over one double hung windows and a picture window composed of multi-lights. The medium cross gable roof has minimal eaves and a central chimney. The recessed entry has a square wood post, metal security door and a wood door with multi-lights.

423. 258 S. East Street. Coy's Maytag Home Appliance Center. Gabled-ell, c1900, NC. Photo No. 47

A brick foundation supports the L-plan of this two story, clapboard former residence. The window surrounds of

United States Department of the Interior
National Park Service

National Register of Historic Places
Continuation Sheet

Section number 7 Page 84 Christian Ridge Historic District

the one over one double hung windows have entablature. The high cross gable roof has parallel gables, a jerkin head side gable and a front gable dormer. There is imbrication in the gables. The modern, full width front addition serves as a commercial showroom and virtually obscures the front facade of the house. This addition wraps around the south elevation to the rear of the house. The substantial alterations render this property as non-contributing.

424. 254 S. East Street. Gable Front, c1910, C.

Photo No. 47

The rectangular plan of this two story vinyl clad house rests on a brick foundation. The lights are one over one double hung windows. The high front gable roof has medium eaves and small returns. The chimney is offset. The full width open front porch has brick walls, piers and columns, all with concrete caps, and a half hipped roof. A wood pane door with upper multi-lights serves as the main entrance. There is a ground level entrance on the north elevation and a one story addition located at the rear of the house.

425. 200-214 S. East Street. Contemporary, c1960, NC.

Photo No. 47

A concrete foundation underlies this rectangular, two story house covered by vertical wood planks. The medium side gable roof with narrow eaves extends over a balcony. The recent construction date render this property as non-contributing.

426. 54-52 S. East Street. Commercial, c1910, C.

This one story rectangular building rests on a concrete block foundation. Converted into apartments, the building's lights are two over two and four over one double hung windows. The low shed roof slopes toward the rear of the building and has no eaves. The concrete entry porch has steps to the south and north, a lead pipe railing, poles and a shed roof. Two modern doors provide access to the apartments.

427. 8 S. East Street. Craftsman Bungalow, c1920, C.

A brick foundation supports the one story, clapboard house with a rectangular plan. The lights are three and six over one double hung windows with entablature. In the attic area is an arched multi-light with entablature. The medium side gable roof has wide eaves, an open cornice, brackets and vergeboard. The chimney is offset. The full width open front porch has a brick foundation and a concrete floor. Tuscan columns support a curvilinear entry hood with wide fascia. A modern door gives entrance to the house. Both the south and north elevations have extensions.

West side of North East Street

428. 52 N. East Street. T-plan, c1900, NC.

Wide aluminum oversiding covers this two story T-plan house on a brick foundation. The lights are replacement windows. The high cross gable roof has wide eaves, an open cornice, exposed rafters, knee braces and vergeboard. The chimney is centrally located. The side porch has brick walls with rowlock bricks, screens and decorative metal posts. The front facade is distorted by a two story addition with a shed roof. A shed roof addition is also present on the north elevation. The extensive alterations make this property non-contributing.

429. 58 N. East Street. Free Classic, c1900, NC.

The irregular plan of this two and one half story vinyl clad house rests on a parged brick foundation. The high cross gable roof contains shed dormers and a Palladian window. The house has been converted into an apartment building with major additions that wrap around the structure and obscure the original facade. The extensive modifications render

United States Department of the Interior
National Park Service

National Register of Historic Places
Continuation Sheet

Section number 7 Page 85 Christian Ridge Historic District

this property as non-contributing.

430. 208 N. East Street. Craftsman, c1910, C.

Photo No. 42

Narrow clapboard covers this two and one half story house with a rectangular plan on a brick foundation. Wood belt courses run above the first and second story windows. The lights are replacement windows. Some of the window surrounds have entablature. The full width front porch has brick walls and piers with concrete caps, and Tuscan posts that support a low front gable roof with a pendant and wide fascia. The door surround of the north elevation ground level entrance has an entablature. Located at the rear of the house is a one story extension.

431. 250 N. East Street. Gable Front, c1900, C.

Photo No. 42

The asbestos shingle of this two story, rectangular house obscures its foundation. The lights are narrow one over one double hung windows. The second story window surrounds have entablature. The high front gable roof has medium eaves and a boxed cornice. The full width open front porch has slender Tuscan columns that support a half hipped roof. The shed roof extension at the rear of the house contains a half glass door with two arched panes. The shed roof side porch utilizes slender, square wood posts. The door surrounds include transoms.

432. 252 N. East Street. T-plan, c1900, C.

Photo No. 42

Rock-faced ashlar provides the foundation for this two story, shiplap house. The lights are one over one double hung windows and the window surrounds include entablature. The high cross gable roof has narrow eaves, an open cornice, exposed rafters and vergeboard. Slender Tuscan columns support the half hipped roof of the open side porch. The main entrance is a modern door. Located at the rear of the house is an addition.

433. 254 N. East Street. Gable Front/Queen Anne, c1900, C.

Photo No. 42

The vinyl oversiding of this two story, rectangular house obscures the foundation. The lights are narrow one over one double hung windows. The high front gable roof has narrow eaves and a boxed cornice. The open wrap-around U-shaped porch has turned wood posts, a wood railing frieze, spindlework brackets and an arched spandrel with a pendant over the entry. The half hipped roof features a high front gable over the entry. Two half glass doors provide access to the house. There are shed roof additions and a deck at the rear of the house.

434. 256 N. East Street. T-plan, c1900, C.

Photo No. 42

The one story T-plan house is covered with vinyl oversiding. The foundation is parged brick. The lights are replacement windows. The medium cross gable roof has medium eaves and a vinyl boxed cornice. Located on the north elevation is an open, side gable porch with square wood posts and balustrade. Additions are located on the south and west elevations.

East side of South East Street

435. 753 S. East Street. Ruth Moriarty House. Craftsman Bungalow, c1920.

Photo No. 40

A brick foundation underlies this rectangular, two story vinyl oversided house. Multi-lights and eight over one double hung windows make up the lights. The medium side gable roof has a large shed dormer, wide eaves and knee braces. The chimney is offset. The full width open front porch has brick walls and pier, splayed brick columns and concrete caps. The main roof extends over the porch. A wood panel door with a fanlight provides access to the interior. The south elevation includes a ground level entrance. Metal shutters are present.

United States Department of the Interior
National Park Service

National Register of Historic Places

Continuation Sheet

Section number 7 Page 86 Christian Ridge Historic District

436. 751 S. East Street. Colonial Revival, c1940, C.

Photo No. 40

Brick soldiers head the foundation of this two story, rectangular house clad with narrow vinyl oversiding. The lights are six over six double hung windows. The high side gable roof contains two front gable dormers and minimal eaves. The central chimney incorporates two chimney pots. The open concrete stoop has a brick foundation. The door surround features square wood pilasters, entablature and multi-lights. The main entrance is a modern art glass and wood panel door. Metal shutters flank the windows. A one story addition is located on the north elevation.

437. 709 S. East Street. Craftsman Bungalow, c1920, C.

Photo No. 40

A brick foundation supports the rectangular, two story house with vinyl oversiding. The lights are primarily replacement windows, but the front facade contains paired three over one double hung windows. The medium side gable roof has jerkin heads, a front, jerkin head dormer, wide eaves, a vinyl boxed cornice and brackets. The dormer is recessed into the roof with a floor and a vertical wood panel railing. The front slope of the roof extends over the full width open porch that is defined by brick walls, columns and a pier, all with concrete caps. The north elevation includes a two story addition with a one car garage.

438. 651 S. East Street. T-plan, c1900, C.

Wide vinyl oversiding covers the two story T-plan house with a brick foundation. The lights are narrow one over one double hung windows. The high cross gable roof with a small hip has narrow eaves, a vinyl boxed cornice and an offset chimney. The open porch has modern fluted columns and a flat roof. The south elevation contains a one story bay window. At the rear of the house is a one story shed roof addition.

439. 609 S. East Street. Colonial Revival, c1920, C.

The two story, rectangular house rests on a brick foundation. Wide aluminum oversiding covers the walls. The lights are primarily replacement windows with one small eight over one double hung window on the front facade. The medium side gable roof has medium eaves, a boxed cornice, medium returns and a central chimney. A high front gable hood with arched fascia on slender, fluted, modern columns covers the front stoop. A modern door provides entrance to the house. Wood shutters flank the windows. A one story addition is located on the north elevation.

440. 559 S. East Street. Hibbard House. Gable Front Bungalow/Colonial Revival Cottage, c1920/1950, C.

Photo No. 58

The one story, rectangular house rests on a brick foundation. Shiplap vinyl oversiding covers the walls. The lights are replacement windows. The south elevation contains a rectangular bay window. The medium front gable roof has minimal eaves and an offset chimney. The partial width open front deck/porch has a concrete floor on a brick foundation and a metal railing. The enclosed entry has a front gable roof with modern imbrication. The colonial door surround features a triangular pediment with entablature, square, fluted pilasters, a modern art glass door and lanterns.

441. 555 S. East Street. Craftsman Bungalow, c1920, C.

Photo No. 58

Rock-faced ashlar forms the foundation of this cross plan, one story house. Vinyl oversiding covers the walls. The lights are ribbon and three over one double hung windows. Metal awnings cover the windows. Wood shutters with cutout crescent moons are present. The medium cross gable roof has jerkin heads, medium eaves, knee braces and an

United States Department of the Interior
National Park Service

National Register of Historic Places

Continuation Sheet

Section number 7 Page 87 Christian Ridge Historic District

offset chimney. The side gable over the south elevation extension juts out over the foundation. The partial width, open front porch has brick walls, columns and a pier, all with concrete caps, and a jerkin head front gable roof with knee braces. There is a recessed arched entry.

442. 551 S. East Street. Gable Front Bungalow, c1920, C.

Photo No. 58

The rectangular plan of this one story clapboard house rests on a rock-faced ashlar foundation. The lights are three over one double hung windows. The window surrounds have entablature and are flanked by metal shutters. The medium front gable roof has jerkin heads, medium eaves, an open cornice and exposed rafters. The chimney is offset. The full width front porch projects outward with a front gable jerkin head roof. Modern louvered windows and brick walls with concrete caps enclose the porch.

443. 451 S. East Street. Hugh Mattix House. Colonial Revival Cottage, c1940, C.

This one story house has an L-plan on a concrete block foundation. The walls are covered with vinyl oversiding and the lights are replacement windows flanked by metal shutters. The medium cross gable roof has minimal eaves. Both an offset chimney and an exterior chimney are present. The recessed entry contains a wood panel door with upper multi-lights. A brick addition embellished with dentils has a lower roof line creating overlapping side gables. Other additions are located at the rear of the house.

444. 353 S. East Street. T-plan, c1900, NC.

A parged brick foundation underlies this two story, T-plan house with vinyl oversiding. The lights are replacement windows. The high cross gable roof has narrow eaves and a boxed cornice. Additions and alterations to the roof line give a Tudor Revival feel and obscure the original T-plan and render the property non-contributing.

445. 255 S. East Street. T-plan, c1890, C.

This one story shiplap clad house has a T-plan on a parged brick foundation. The lights are narrow one over one double hung windows. The window surrounds have entablature. The high cross gable roof has narrow eaves, an open cornice, brackets, barge board and bracing. The open porch has decorative metal posts and railings and a half hipped roof. Two modern doors with multi-light storm doors provide access to the house. The door surrounds have transoms. There are shed roof additions at the rear.

446. 253 S. East Street. Craftsman, c1910, C.

Brick provides the foundation for this two and one half story narrow clapboard house with a rectangular plan. Wood belt courses run above the foundation and below the second story windows. The lights are ribbon and three over one double hung windows and the window surrounds have entablature. The medium side gable roof has a large gable front dormer, wide eaves, an open cornice, exposed rafters and knee braces. The full width open front porch has brick walls, columns and a pier, all with concrete caps, and a medium front gable roof. The door surround include entablature. The north elevation incorporates a one and one half story extension with a ground level entrance and a half glass door. A one story extension is located at the rear of the house.

447. 51 S. East Street. T-plan, c1900, C.

The two story house has a T-plan on a brick foundation. Wide aluminum oversiding covers the walls. The lights are one over one double hung windows. The high cross gable roof has medium eaves and an aluminum boxed cornice. The chimney is centrally located. The wraparound porch has turned wood posts, a wood balustrade and a half hipped roof.

United States Department of the Interior
National Park Service

National Register of Historic Places
Continuation Sheet

Section number 7 Page 88 Christian Ridge Historic District

with a front gable filled with imbrication over the entry. An exterior staircase leading to a second story apartment is located on the south elevation. There is a shed roof extension at the rear of the house.

East side of North East Street

448. 51 N. East Street. T-plan, c1900, C.

A rock-faced ashlar foundation underlies this one story, T-plan house. Wide aluminum oversiding covers the walls. The lights are replacement windows. The high cross roof has narrow eaves and an aluminum boxed cornice. The open side porch has a shed roof supported by decorative metal posts linked by a metal railing. At the rear of the house is a one story addition.

449. 59 N. East Street. Queen Anne, c1900, C.

The irregular plan of this two story shiplap covered house rests on a brick foundation. The lights are one over one double hung windows. The window and door surrounds have entablatures. The high hipped and cross gable roof has narrow eaves, an open cornice and exposed rafters. The wrap-around open front porch has slender Tuscan columns and a low half hipped roof. The main entrance has a half glass door. The south elevation has a one story addition and two shed roof additions are situated at the rear of the house.

450. 209 N. East Street. Queen Anne, c1900, C.

Shiplap covers the first floor of this two story T-plan house on a parged brick foundation. Imbrication provides the oversiding for the second story. The windows are one over one double hung windows. The window surrounds have entablature. The high hipped and cross gable roof has medium eaves, an open cornice, exposed rafters, brackets and vergeboard. The wrap-around porch has a half hipped roof on decorative metal posts connected by a twisted metal railing. Two modern doors open onto the porch. The door surrounds include entablature and transoms. There are multiple one story additions at the rear of the house.

451. 251 N. East Street. Queen Anne, c1900, C.

The T-plan of this two story, clapboard house rests on a rock-faced concrete block. A wood belt course encircles the house above the second story windows. The lights are a picture window with a lozenge glass and fleur de lys transom, a fixed pane and one over one double hung windows. Some window surrounds have entablature. The high cross gable roof has narrow eaves and a boxed cornice. The gables have pent roofs. Modern timber posts replace the original columns of the wrap-around open porch. The main entrance is a three quarter glass door with wood panels and dentils. The secondary entrance has a half glass and coffered paneled door. At the rear of the house are one story additions.

452. 253-255 N. East Street. American Four-square, c1910, C.

This square, two story house has a concrete block foundation and wide aluminum oversiding. The lights are one over one double hung windows. The low hipped roof has medium eaves, an open cornice and exposed rafters. The chimney is offset. The full width open front porch features Tuscan columns supporting a half hipped roof. Two half glass doors with transoms open onto the porch. A one story shed roof addition is located at the rear of the house.

453. 257-259 N. East Street. Gable Front, c1900, C.

Asphalt shingle oversiding covers this two story, rectangular house on a parged brick foundation. The lights are

United States Department of the Interior
National Park Service

National Register of Historic Places
Continuation Sheet

Section number 7 Page 89 Christian Ridge Historic District

one over one double hung windows. The window surrounds of the first story have entablature. The medium front gable roof has wide eaves and an aluminum boxed cornice. The full width open front porch has turned wood posts supporting a shed roof. Two modern doors provide access to the house. A full width shed roof addition is situated at the rear of the house.

454. 261 N. East Street. Gabled-ell, c1890, C.

A parged brick foundation supports the two story, L-plan house. Vinyl oversiding covers the walls. The lights are replacement windows. The high cross gable roof has narrow eaves, a vinyl boxed cornice and small returns. Vinyl walls and modern windows enclose the side porch. At the rear of the house is a full width addition and deck.

West side of South Van Buren Street

455. 450 S. Van Buren Street. Craftsman Bungalow, c1930, C.

This one and one half story, rectangular house has a concrete foundation and wide aluminum oversiding. The various lights include a multi-light picture window, a ribbon window, and three and eight over one double hung windows. The medium side gable roof has wide eaves and a boxed cornice. There is a large flush gable chimney. The wood panel shutters have a circular cutout device. The entry porch has a brick foundation and a projecting gable roof with wide eaves, a boxed cornice and a recessed arch supported by paired Tuscan columns.

456. 250 S. Van Buren Street. Craftsman Bungalow, c1920, C.

Rock-faced ashlar provides the foundation for this two story, clapboard and wood shingle house with a rectangular plan. Ribbon windows and three over one double hung windows make up the lights. The second story window surrounds have entablature. The medium side gable roof has a front gable dormer, wide eaves, an open cornice, exposed rafters, knee braces and vergeboard. The chimney is centrally located. The full width open front porch has clapboard walls and square wood posts. The forward slope of the main roof extends over the porch area.

East side of South Van Buren Street

457. 251 S. Van Buren Street. Queen Anne Cottage, c1900, C.

Photo No. 50

This one and one half story clapboard house has an irregular plan on a brick foundation. Wood belt courses encircle the house above the first story windows. The south elevation features a cutaway corner with large curved brackets. The lights are one over one double hung windows and fixed panes. The half story window surround has entablature. The open shed roof side porch has clapboard walls and square wood posts and pilasters. The door surround includes a transom. There is a one story shed roof addition.

West side of South O'Neil Street

458. 352 S. O'Neil Street. Pat Sertain House. Craftsman, c1910, C.

Clapboard and asbestos shingle cover the walls of this two and one half story, rectangular house. Brick provides the foundation. The lights are three, four and five over one double hung windows. The second story window surrounds have entablature. The medium side gable roof has wide eaves, an open cornice, exposed rafters, knee braces and vergeboard. The chimney is centrally located. The full width screened front porch has a brick foundation, paneled wood columns and piers. There is a front gable over the entrance and a wood and multi-light front door. The north elevation

United States Department of the Interior
National Park Service

National Register of Historic Places
Continuation Sheet

Section number 7 Page 90 Christian Ridge Historic District

includes a ground level entrance. At the rear of the house is an addition and deck.

459. 308 S. O'Neil Street. Queen Anne, c1900, C.

The two story vinyl oversided house has a rectangular plan on a rock-faced ashlar foundation. A cutaway corner with corner brackets is present. The various lights include multi-lights, Queen Anne sashes, and one over one double hung windows. The high side gable roof has gable and hipped dormers, narrow eaves, a vinyl boxed cornice and brackets. The metal slat shutters have brass hinges. The full width open front porch has rock-faced ashlar piers with concrete caps, vinyl oversided splayed posts and a half hipped roof. The south elevation contains an overlapping gable extension, a new side entrance and a one story hipped tower over the cutaway corner mentioned above.

460. 256 S. O'Neil Street. Craftsman Bungalow, c1920, C.

The L-plan of this one and one half story clapboard house rests on a brick foundation. Ribbon windows and three over one double hung windows form the lights. The medium cross gable roof has wide eaves, an open cornice and exposed rafters. The chimney is offset. The open side porch has brick walls and columns with concrete caps and a projecting front gable roof with wide eaves, an open cornice and exposed rafters. A multi-light door provides access to the house. There is a slight extension on the north elevation.

461. 212 S. O'Neil Street. Craftsman Bungalow, c1920, C.

A brick foundation underlies the L-plan of this one and one half story house. Wide aluminum oversiding covers the walls. The various lights include ribbon windows, and three and four over one double hung windows. The medium cross gable roof has narrow eaves, an open cornice and exposed rafters. The chimney is centrally located. The south elevation contains a rectangular extension with a large exterior chimney and an overlapping gable roof. The open front porch in the "L" has brick walls and columns with concrete caps. The medium gable porch roof overlaps the front gable of the main roof.

462. 52 S. O'Neil Street. Gabled-ell, c1930, C.

The L-plan of this one story house has a brick foundation. Stretcher bond brick with herringbone brickwork under the side gables covers the walls. The high cross gable roof has narrow eaves, a boxed cornice and small returns. The enclosed porch in the "L" has brick walls and modern windows with rowlock brick sills. The lights are replacement windows. The windows under the gables are surrounded by arched projecting bricks in a herringbone pattern. Over the small brick stoop is a recessed arched gable. At the rear of the house is a rectangular addition.

East side of South O'Neil Street

463. 351 S. O'Neil Street. Colonial Revival Cottage, c1940, C.

Photo No. 52

This rectangular one story house has a concrete foundation and aluminum oversiding. The lights are six over six double hung windows. The high side gable roof has minimal eaves. The chimney is centrally located. A small addition projects forward from the front facade and contains a multi-light oculus. A screened porch with vertical plank walls extends from this addition across the front facade. A new roof extends over the porch. At the rear is an addition.

464. 251 S. O'Neil Street. Gable-front Bungalow, c1950, NC.

Photo No. 45

This rectangular, one story house has a concrete block foundation and vinyl oversiding. A picture window and

United States Department of the Interior
National Park Service

National Register of Historic Places

Continuation Sheet

Section number 8,9,10 Page 91 Christian Ridge Historic District

horizontal two over two double hung windows make up the lights. The medium front gable roof has wide eaves and a vinyl boxed cornice. The front gable projects over the front facade. The partial width entry porch is recessed and has a square fluted post. There is an attached one car garage. The property is non-contributing due to its nondescript design and recent date of construction.

East side of North O'Neil Street

465. 7 N. O'Neil Street. Gable Front, c1890, C.

Vinyl oversiding covers this two story, rectangular house on a brick foundation. The lights are one over one double hung windows with a large fixed pane located on the first floor. The window surrounds have entablature. The high front gable roof has wide eaves, a vinyl boxed cornice and small returns. The open front porch has paneled wood columns. The south elevation has a full length one story addition with three over one double hung windows and is perhaps the same era as the front porch. The north elevation contains an added entrance with wooden steps. There is a shed roof addition at the rear.

West side of South Williams Street

466. 252 S. Williams Street. Ranch, c1950, C.

The one story wide clapboard house has a rectangular plan on a brick foundation. The center section of the house extends slightly forward. The lights are primarily one over one double hung windows. The south elevation has double multi-light windows. The medium side gable roof has minimal eaves. There is a recessed entrance with dentils and wood door.

East side of North Young Street

467. 7 N. Young Street. Colonial Revival, c1940, C.

Concrete block provides the foundation for this two story, rectangular house clad in vinyl oversiding. The lights are six over six double hung windows. There is an added half hipped bay window. The high side gable roof has a gable dormer, minimal eaves and an offset chimney. The enclosed entry with a wood panel door projects outward from the front facade. The north elevation contains a screened porch and there is an extension of the front facade with six over six double hung windows. Wood shutters flank the windows. Multiple additions are located at the rear.

Brick Sidewalks

468. O'Neill Street between Walnut and Clinton, c. 1900, C

Photo No. 9

In various locations around the district, brick sidewalks contribute to the district's historic quality and features. An especially good example of a herringbone sidewalk is shown in photo No. 9 and identified on the map.

8. Narrative Statement of Significance

United States Department of the Interior
National Park Service

National Register of Historic Places Continuation Sheet

Section number 8,9,10 Page 92

Christian Ridge Historic District

Summary

The Christian Ridge Historic District is eligible for the National Register under Criterion C for the quantity and quality of its nineteenth and early twentieth century architecture. The district contains a high degree of high style late nineteenth and early twentieth century residences, built by individuals whose fortunes were made with the growth in the town spurred by railroad and other developments. The Queen Anne style is predominant in the district, with additionally notable examples of the Richardsonian Romanesque, Stick/Eastlake and Shingle styles. Further, the architectural collection is supported by a large number of Craftsman homes, as well as Colonial Revival and Tudor Revival. For a town of Frankfort's size, the Christian Ridge Historic District displays excellent examples of a wide range of architectural styles. Thus architecture is the appropriate area of significance for the district.

The period of significance, c. 1832 - 1952 has been chosen. The earliest date represents the first platting and sale of the lots in the district, and the latter represents 50 years from our present time.

Statement of Significance

The land ceded to the United States by the Miami Indians in the 1818 Treaty of St. Mary's included a substantial portion of present day Clinton County. At the land sale held in October 1826 the United States government purchased half of the county's Miami Indian Reserve. By 1834 the remaining tribal lands had been procured for less than two dollars an acre. The legislative act of January 24, 1828 attached the area, popularly referred to as the "Washington Territory," to the newly created Tippecanoe County (1826) for judicial convenience.²

The provision for local government aided in attracting people to the Territory. The first settlers arrived in 1826 and took up residence on Twelve Mile Prairie.³ Jefferson, the first town, was platted on July 9, 1827.⁴ The same year saw the arrival of the Pence brothers, John, William and Nicholas, from Warren County, Ohio. They purchased a total of three and one half sections of land.⁵ By 1830 the population of the future Clinton County reached 1,423 and residents petitioned the State of Indiana to organize a new county which they named after Clinton DeWitt, the New York governor who promoted the construction of the Erie Canal. The legislative act of January 29, 1830 created Clinton County and provided for the establishment of a county seat.⁶

At the time of its organization Clinton County was divided into three townships, Washington, Ross and Jackson. Fourteen additional townships were created over the course of fifty-eight years. Center Township, the future site of the Frankfort, resulted from a reapportionment of Jackson Township in 1872. The name reflects its central geographic location in the county. The township is seven miles in length, three miles in width and contains twenty-one square miles.

² Claybaugh, Joseph. *A History of Clinton County Indiana* ... p. 28-29.

³ *Ibid.*

⁴ Grove, Helen E. *Frankfort: A Pictorial History*, p. 10.

⁵ Claybaugh, p. 268-269.

⁶ *History of Clinton County, Indiana*, p. 511.

United States Department of the Interior
National Park Service

National Register of Historic Places

Continuation Sheet

Section number 8,9,10 Page 93 Christian Ridge Historic District

Prairie Creek, a tributary of the south fork of Wildcat, provides the principal drainage. The land is essentially level.⁷ In 1830 the area destined to house the county seat was sparsely populated. As the only town in the county, Jefferson attracted settlers. Jefferson boasted a store and a post office with bi-weekly mail service.⁸ Abner Baker, merchant and a major landowner, rallied the residents of Jefferson and its environs. Together they championed the town's selection as the county seat. However, the Jefferson's location six miles from the western county line and eighteen miles from the eastern boundary defeated their efforts. Placement of the county seat required a more central location. Like Abner Baker, the Pence brothers saw an opportunity for profit. They redistributed portions of their three and one half sections of land among themselves in order to share equally in the offer of sixty acres and one hundred dollars made to the county commissioners by John Pence for the establishment of a new town as the county seat. The county accepted the offer and the Pence brothers named the nascent town Frankfort after their ancestral home Frankfort-am-Main, Germany.⁹ Ironically, John Pence never realized much profit from the transaction. Settlers holding title to lands adjacent to the new town cashed in on real estate sales.¹⁰

William Douglass, the county agent, filed the plat of Frankfort on June 8, 1830. Frankfort consisted of the eight blocks surrounding a public square. Washington, Jackson, Main Cross (i.e. Clinton), and Main Streets encompassed the square. Ohio, Prairie (i.e. Prairie Creek), Columbia and Walnut Streets formed the boundary.¹¹ On July 12, 1830 the initial sale of the sixty-four available lots took place.¹² Registered on December 2, 1835, Armantrouts Addition incorporating the land bounded by Columbia, Washington and Walnut Streets westward to the alley between Fourth and Fifth Streets, represents the first development beyond the original plat.¹³ John Pence located his first, second and third additions on land northwest of the square. His south addition occupied the area enclosed by Columbia, Wabash, Jackson and South Streets. Lots in the first addition sold readily in 1870, but Pence had difficulty selling the other properties into the 1880s.¹⁴

The October 25, 1830 sale offered eighty lots. Sixteen additional blocks were added to the original plat of nine and six of these were located along Prairie Creek. Although unplatted and unsold, the six blocks represent Frankfort's first eastward expansion into the area known as "Christian Ridge."¹⁵ County agent Douglass reported the sale of the six lots at the March term 1832. Horatio Barner purchased block no. 4 on the east bank of Prairie Creek between Washington and

⁷ Claybaugh, p. 294.

⁸ Ibid., p. 81.

⁹ Ibid., p. 268-269.

¹⁰ Ibid., p. 98.

¹¹ Ibid., p. 102-103.

¹² *History of Clinton County, Indiana*, p. 344.

¹³ Claybaugh, p. 108.

¹⁴ Ibid., p. 98.

¹⁵ Ibid., p. 109. Helen E. Grove designates this area as "Christian Ridge" in *Frankfort: A Pictorial History*, p. 10, 42.

United States Department of the Interior
National Park Service

National Register of Historic Places

Continuation Sheet

Section number 8,9,10 Page 94

Christian Ridge Historic District

Clinton Streets for \$51.00. The 1887 Sanborn Fire Insurance Map indicates a feed store situated along the creek bank and the United Brethren Church on the Clinton Street portion of the block. Block no. 5 purchased by John Baker for \$60.50 is located between Clinton and Walnut Streets along Prairie Creek. The Sanborn maps indicate that this block remained vacant until the construction of "Old Stoney" 1892. The least valuable block no. 6 cost Peter Francis \$10.01. Once the site of residences and the Third Ward School the block now contains the Clinton County Sheriff's Department.¹⁶

Scott's Indiana Gazetteer describes the young county seat in 1833 as "situated on the South Fork of Wildcat [i.e. Prairie Creek], and near to the margin of a beautiful prairie. The situation is pleasant and surrounded by a large body of fertile land; but the town since its establishment, has not had time to make much progress in population or improvements. It ... has at this time about one hundred and fifty inhabitants."¹⁷ Population figures for Frankfort attest to its slow growth. *Redfield's Indiana Gazetteer and Shipper's Guide* (1865) gives Frankfort's population as 773 in 1860 and "about 1,000" at the time of publication. A census taken in August 1866 puts the figure at 905.¹⁸ By 1870 the population had grown modestly to 1,300. And then, on October 14, 1870, the first railroad cars rolled into town. Within sixteen years the population rocketed to 5,000 and continued to rise as rail transportation revitalized Frankfort and transformed it into a commercial entrepot.¹⁹

The landlocked condition of Clinton County and Frankfort hampered growth. Early road construction sought to ease the predicament and connect inhabitants with other cities and markets. Between 1830 and 1838 five major thoroughfares were completed in Clinton County--Newcastle to Lafayette, the Michigan Road, Crawfordsville to Fort Wayne, Kirk's Cross to Delphi, and Muncie to Lafayette. While the roads were a vast improvement over foot and wagon travel through the swamps and sloughs of the county, the Chicago and Michigan City markets still required a fortnight to reach. The advent of the Wabash and Erie Canal in Delphi and Lafayette in October 1849 brought markets closer to Frankfort and reduced the travel time to one or two days.²⁰ Commerce and development required dependable, efficient and economical transportation. Poor roads and a lack of a home market combined to retard Frankfort's growth for the first forty years.

To alleviate the problem, farsighted businessmen invested in the construction of railroads to "enable [Frankfort] to compete favorably, in a business point of view, with the leading towns and cities throughout the State."²¹ Efforts began as early as 1849 but would not reach fruition until the Terre Haute & Logansport Railroad, also known as the Vandalia Line, steamed into Frankfort on October 14, 1870.²² The Lake Erie & Western, completed in 1880, linked Bloomington, Illinois, with Sandusky, Ohio, stopping in Frankfort and thus connecting the city to interstate commerce. The Louisville, New Albany and Chicago line (The Monon) finished laying track from Chicago to Indianapolis via Frankfort in 1883. The

¹⁶ Ibid., 113.

¹⁷ Ibid., p. 269-270.

¹⁸ Ibid., p. 270.

¹⁹ *History of Clinton County, Indiana*, p. 513. Claybaugh (p. 254) notes the following population figures: 1890 = 5,919; 1900 = 7,100; 1910 = 8,634.

²⁰ Ibid., p. 508-509.

²¹ Ibid., 513.

²² Clinton County Centennial Committee. *A Century of Progress*, p. 38.

United States Department of the Interior
National Park Service

National Register of Historic Places

Continuation Sheet

Section number 8,9,10 Page 95 Christian Ridge Historic District

Frankfort & State Line Company undertook rail construction to the east and to the west from Frankfort with the vision that it would become part of the proposed Toledo, St. Louis & Kansas City line. The company completed the project in 1881 and thus further enhanced Frankfort's position as a center of commerce and shipping.²³ The county, the township and the local citizenry provided approximately one million dollars in support of the numerous railroad projects.²⁴ H. Y. Morrison, John G. Clark, Alexander B. Given, Samuel Ayres, James H. Paris and James W. Morrison actively served in the establishment and management of railroad companies. Other individuals such as N. T. Catterlin, John Pence, Isaac D. Armstrong, John Barner, Aaron H. Southard and John Coulter provided financial assistance and ceded rights of way. The efforts of these and other individuals assured Frankfort's prosperity, as well as their own. In the late 1880s and early 1890s pro-active citizens sought to entice the Clover Leaf Road to locate its shops in Frankfort. By 1913 the shops employed as many as 450 men.²⁵

The homes in the Christian Ridge Historic District reflect the ambitions and lives of its energetic citizens. John A. Ross whose home is at 804 E. Clinton Street, is a good example. He came to Frankfort from Lafayette, Indiana, in 1882 and promptly established himself as a successful general contractor. His relocation became permanent in 1888 when he entered into partnership with James A. Hedgecock. The company of Ross & Hedgecock secured contracts for Frankfort city street improvements, the construction of gravel roads and the erection of iron bridges in Clinton County. In 1890 the two men established the Frankfort Brick Works which had an annual capacity of up to four million bricks. Sometime after the 1894 fire that destroyed the brickyard (quickly rebuilt by the energetic fellows) Ross & Hedgecock merged with the Frankfort Construction Company. Ross, the largest stockholder, assumed the presidency. This company handled many prominent projects which included schools, libraries, hospitals, business blocks and government buildings, asphalt and bitulithic streets and railroad bridges. Ross, however, did not confine his activities to construction. He assisted in the organization of the American National Bank and was elected president. In addition, he was a key figure in the Frankfort Heating and the Peoples Life Insurance Companies and he invested in Clinton County farm land. The Frankfort Courier News remarked on Ross' impact on Frankfort:

He was both progressive and aggressive in the building up of his own private fortune ... and while he profited by his business enterprise the community as a whole also profited. Having unbounded confidence in the city of his adoption he contributed in a large measure to its improvement and made permanent investments here that will stand as monuments to his good judgment of Frankfort's future growth and expansion.²⁶

The fixation on railroads established Frankfort as a major center for freight transportation. The arrival of the iron horse generated excitement and a sense of purpose and well-being. The town grew into a city and was incorporated as such in 1875. The anonymous author of the 1886 *History of Clinton County, Indiana* remarks with pride:

²³ *History of Clinton County*, p. 484-489. See also Clinton County Bicentennial Committee. *Legacy*, p. 28-31.

²⁴ Claybaugh, p. 106.

²⁵ Clinton Bicentennial Committee. *Legacy*, p. 30.

²⁶ "Frankfort Courier News," December 6, 1920, p. 6.

United States Department of the Interior
National Park Service

National Register of Historic Places

Continuation Sheet

Section number 8,9,10 Page 96 Christian Ridge Historic District

Frankfort is pleasantly laid out, and much good taste is shown by its citizens in the erection of their residences by the selection of modern and beautiful architectural designs. We give here the names of the streets which have, with hardly an exception, been beautifully adorned by the planting of a row of shade trees on either side, and which have been graded and graveled in an excellent manner.²⁷

Included in the listing are Clinton, Walnut, Wabash, Webster (now relegated to alley status), Clay and Harrison Streets, all of which are central to the Christian Ridge Historic District. A bird's eye view of Frankfort published in 1885 also bears this out. The view is important for several reasons. It reveals that the vast majority of city growth took place to the north, south and west of the courthouse square prior to 1885 despite the availability of lots east of Prairie Creek. The view also depicts large, impressive homes located from the 400 block through the 800 block of E. Clinton Street, the heart of the Christian Ridge Historic District. More modest dwellings occupy the street's 900 and 1000 blocks. A large tract of undeveloped crop and timber land lay south of Walnut Street and the Boylestown Road (now an extension of Wabash Street). Washington Street does not extend from Harrison Street (present day Sycamore Street) to East Street.

Photographs published in the Winter 1895-96, Women's Edition of "Frankfort Illustrated" also portray trees of various ages lining the streets and enhancing the vision of prosperity.

Architecture

The Christian Ridge Historic District embodies many outstanding examples of architectural design ranging from the formidable Richardsonian Romanesque to the perambulations of Queen Anne to the clarity of Neo-Classicism and the angularity of the Prairie School. Stately Colonial and Tudor Revivals coexist with earthy Craftsman dwellings. The many cottages and bungalows attest to the increasing accessibility of the American dream.

Subdividing the district by architectural style portrays its overall development from 1879 to 1949. In general, East Washington, North and South East Street, East Wabash Street and Prairie Creek encompass the oldest part of the area. A second wave of development fills in much of the area bounded by East South Street, North and South Williams Street, Harvard Terrace and Prairie Creek. The number of noteworthy buildings in the district is impressive. Among them are the David Warren Osborne House at 401 East Clinton Street (Photo 16/Fig. 2), the John A. Ross House at 804 East Clinton Street, Stoney Heights at 500 East Washington Street (Photo 1), and the Raymond Fowler House at 658 East Armstrong Street (Photo 32). Also significant is the work of architect Rodney Leonard who designed the High School, "Old Stoney," at 301 East Clinton Street (Photo 20), the First United Brethren Church at 300 East Clinton Street (Photo 19) and the Dr. Guy Bergen House at 408 South Clay Street (Photo 29). John A. Ross is also recognized as a local builder during the period of significance.

The Queen Anne style dominates the older portion of the Christian Ridge District. Frankfort's growing importance as a railroad center facilitated a builder's access to pattern books and the pre-cut detailing characteristic of the style. Queen Anne represents approximately one fourth of the resources in the district. There are superb examples of the Spindlework, the Free Classic and the Half-Timbered subtypes. Towers, recessed arches, turned posts and columns, porches, cutaway corners and bay windows, brackets, bargeboard, bracing, pendants, scroll and spindle work, imbrication, plaster relief, half-timbering, Palladian windows, multi-pane sashes and art glass generously embellish the cottages and the high style

²⁷ *History of Clinton County, Indiana*, p. 514-515.

United States Department of the Interior
National Park Service

National Register of Historic Places

Continuation Sheet

Section number 8,9,10 Page 97 Christian Ridge Historic District

homes alike. The Temple-Gaddis House at 558 East Clinton Street (Photo 13) is one of the earliest examples of high style Queen Anne architecture in the district. The Women's Edition of *Frankfort Illustrated* (Winter 1895-96) features photographs of the homes of prominent Frankfort citizens. Examples of the district's high style Queen Anne houses published in the magazine are the James H. Paris House at 363 East Clinton Street (Photo 18/Fig. 3), the David Warren Osborne House at 401 East Clinton Street (Photo 16/Fig. 2), and the Harry Carl Sheridan House at 409 South Clay Street (Photo 28). Two splendid examples of the Free Classic subtype in the district are the 1892 W. H. Kern House at 507 East Washington Street (Photo 2/Fig. 1) and the 1899 John A. Ross House at 804 East Clinton Street (Photo 11).

Contemporaneous with the Queen Anne style are the Richardsonian Romanesque, the Stick and the Shingle styles. The Christian Ridge Historic District includes several examples of these styles. Of particular note are the two Richardsonian Romanesque structures, "Stoney Heights" at 500 East Washington Street built by C. M. Pratt, general superintendent of the Toledo, St. Louis & Kansas City Railroad and the Frankfort High School, "Old Stoney," designed by architect Rodney Leonard (Photo 20). The home at 1002 East Clinton Street illustrates the Shingle style (Photo 7). An interesting representation of the Stick style is the Judith Zimmerman House at 360-360 ½ East Walnut Street (Photo 21/Fig. 4).

The district contains six examples of the Italianate style. The relatively small sampling of this style is not surprising when it is considered that the Christian Ridge Historic District developed primarily in the 1880s when the Queen Anne style began to supplant the Italianate. The Horace Campbell House at 400 East Walnut Street (Photo 22) illustrates the typical massing and form of the style. The intriguing William Wolever House at 657 East Clinton Street employs a jerkin head cross gable roof to add visual interest to its asymmetrical plan.

Pattern books and fashionable magazines popularized the Prairie School of architecture inspired by the work of Chicago architects, Louis Sullivan and Frank Lloyd Wright. The district contains forty-one examples of the vernacular expression, the American Four-square. Scattered throughout the district are six Prairie style houses including the outstanding Raymond Fowler House at [658] E. Armstrong Street (Photo 32).

Second in number to the Queen Anne style homes are the Craftsman houses constructed between 1910 and 1930. These dwellings exemplify the increasing accessibility of home ownership and the need for affordable housing to accommodate Frankfort's rising population. Their construction also signals the community's adoption of a nationwide building trend initiated in southern California. Although examples of the Craftsman style are evident throughout the area, they are especially prevalent in the district's southern quarter. The Craftsman style is frequently associated with smaller scale dwellings. Many forms of the bungalow were constructed in the district. An especially fine example located at 551 Glendale Drive (Photo 37) exhibits a full width front porch with curvilinear brick walls and piers that extend through the front gable entry roof. A more grand illustration of the style is the home at 500 East Clinton Street (Photo 14). An unusual rendering of the style is the duplex at 352-354 East South Street (Photo 26).

The thirty-one Colonial Revival houses within the district exemplify the style's plurality of form. The diversity in size, materials and detailing provide an opportunity to review how popular interest in the colonial past from the 1920s through the 1940s expressed itself in architecture. The houses vary from large, stately homes to more modest cottages and include three instances of Dutch Colonial Revival. There are examples of chaste facades devoid of embellishment other than the pedimented door surround, two story open galleries, porches with one and two story columns, wings, and shed and gable dormers.

United States Department of the Interior
National Park Service

National Register of Historic Places

Continuation Sheet

Section number 8,9,10 Page 98 Christian Ridge Historic District

The Colonial Revival homes outnumber the Tudor Revival dwellings at a ratio of four to one which suggests that within the Christian Ridge District the style appealed less to potential homeowners. However, the Tudor Revival houses are quite noteworthy. Like the Colonial Revivals they range in size and detailing. The earliest houses located at 601 East Washington Street (Photo 4) and 650 East Walnut Street employ brick, stucco and half-timbering. The James Goodwin House at 757 South Harrison Street features overlapping gables and quoins. More modest homes like the one at 855 East Boone Street have projecting entries with steeply pitched gable roofs and prominent, front facade chimneys. Of particular interest is the Dr. Guy Bergen House at 408 South Clay Street (Photo 29) designed by the architect Rodney Leonard. The house is more English cottage in presentation, but on the south elevation it sports a flat roof hood anchored with heavy chains suggestive of a drawbridge.

The district includes two fine examples of the Neo-Classical style—the First United Brethren Church at 300 East Clinton Street (Photo 19) and the M. L. Conly House at 501 East Clinton Street. An example of the Mission Revival style is the Stoney Heights Apartments building at 504 East Washington Streets (Photo 3). Other houses within the district exhibit a variety of forms including the T-plan, the Gabled-ell and the Gable Front. Combined these make up over ten percent of the dwellings in the district.

The Christian Ridge Historic District meets the requirements of Criterion C as it embodies a wide array of architectural styles as interpreted by local builders and architects to suit the tastes and pocketbooks of a prosperous, northern Indiana city. The exceptional quality of the resources is further enhanced by the district's historical significance as Frankfort's first expansion across Prairie Creek. It superbly illustrates the genesis of a residential area from 1870 to 1952.

United States Department of the Interior
National Park Service

National Register of Historic Places
Continuation Sheet

Section number 8,9,10 Page 99 Christian Ridge Historic District

9, 10. Bibliography

Atlas of Clinton County. Frankfort, [Indiana]: Smith & Burget, 1904.

Blumenthal, John J.-G. *Identifying American Architecture, A Pictorial Guide to Styles and Terms, 1600-1945.* Nashville, TN: American Association for State and Local History, 1977.

Claybaugh, Joseph. *History of Clinton County Indiana with Historical Sketches of Representative Citizens and Genealogical Records of Many of the Old Families.* Indianapolis: A. W. Bowen & Co., 1913.

Clinton County Bicentennial Committee. *Legacy: A Bicentennial Salute to Clinton County.* Frankfort, Indiana: Heritage Lithographers, c1976.

Clinton County Centennial Committee. *A Century of Progress: An Account of the Clinton County Centennial with a General Review of the Past Century.* Frankfort, Indiana: [The Committee], 1930.

Division of Historic Preservation & Archaeology, DNR, *Clinton County Interim Report, Indiana Historic Sites and Structures Survey, 1997.*

Grove, Helen E. *Frankfort: A Pictorial History.* St. Louis: G. Bradley Publishing, 1994, c1992.

History of Clinton County, Indiana, Together with Sketches of its Cities, Villages and Towns, Educational, Religious, Civil, Military, and Political History, Portraits of Prominent Persons, and Biographies of Representative Citizens. Also a Condensed History of Indiana . . . Chicago: Inter-State Publishing Co., 1886.

McAlester, Virginia and Lee. *A Field Guide to American Houses.* New York: Alfred A. Knopf, 1984.

Whiffen, Marcus. *American Architecture since 1780, A Guide to the Styles.* Cambridge, Massachusetts: The MIT Press, 1996

Verbal Boundary Description

(See Sketch map)

Beginning at the northwest property line of 300 E. Clinton Street and thence east, following the property lines of the adjacent properties to the west property line of 52 S. Clay Street thence north to the south side of Washington Street, and following this street east to the east side of S. Clay Street, then turning north along the east side of this street to the north property line of 500 E. Washington Street. Continue following the north property lines of the properties along E. Washington Street, to the west property line of number 208 S. East Street, then turn north, following along this line, and the west property lines of numbers 250, 252, 254 and 256, thence east to the west side of East Street, and jog south to a point opposite the north property line of 261 S. East Street, and continue east to the east property line of this resource, then turn south along this line, and continue, following the east property lines of the properties along East Street north of E. Washington Street, and S. East Street to a point on the north property line of number 754 E. Clinton Street, then turn east, following the north property lines of the properties along E. Clinton Street, and the north boundaries of 7 O'Neil and 7 Young Streets, to a point north of the east property line of number 1200 E. Clinton Street, then south to the south

United States Department of the Interior
National Park Service

National Register of Historic Places

Continuation Sheet

Section number 8,9,10 Page 100 Christian Ridge Historic District

boundary of number 1201 E. Clinton Street. Turning west, follow the south property lines of the properties along the south side of E. Clinton Street to the west side of O'Neil Street, then turn south one block to the south side of E. Walnut Street, then, turning east, follow this street to the west side of Williams Street. Turning south, follow the west side of Williams Street to the alley south of E. Boone Street, turning west, follow this alley to the west side of Van Buren Street and turn south, along the west side of Van Buren to the south property line of number 755 Glendale Drive and turn west, to the northeast corner of the property line of number 751 S. East Street and turn south to the south property line of number 753. Turning west, follow this property line to the east side of S. East street, then turn north to the south property line of number 659 Glendale Drive and turn west, following the south property lines of numbers 655, 61,607, 603, then turn north to a point opposite the south property line of number 555, turn west, following the south property lines of number 555, 551 and 501 Glendale, crossing Clay Street, and continuing west along the south property line of number 700 Clay Street and number 757 and 758 S. Harrison Street, to the west edge of the brick alley west of Harrison Street, turning north to the alley south of E. Armstrong Street, then west along the south property line of 309 E. Armstrong Street, and north along its western line, to a point south of E. Armstrong Street, then west and north to include all of the E. Armstrong/ Prairie Creek Bridge, turning back east along the northern edge of the bridge to the west property line of 300 East Armstrong Street, and turning in a northerly direction to follow the west property lines of the properties along Harrison Street to a point which marks the north west corner of the empty lot north of 306 S. Harrison Street and turn east to the west side of S. Harrison Street, thence north along Harrison Street to the north side of E. Walnut Street, turning west to the west property line of 301 E. Clinton Street and follow this line north to the place of beginning.

Boundary Justification

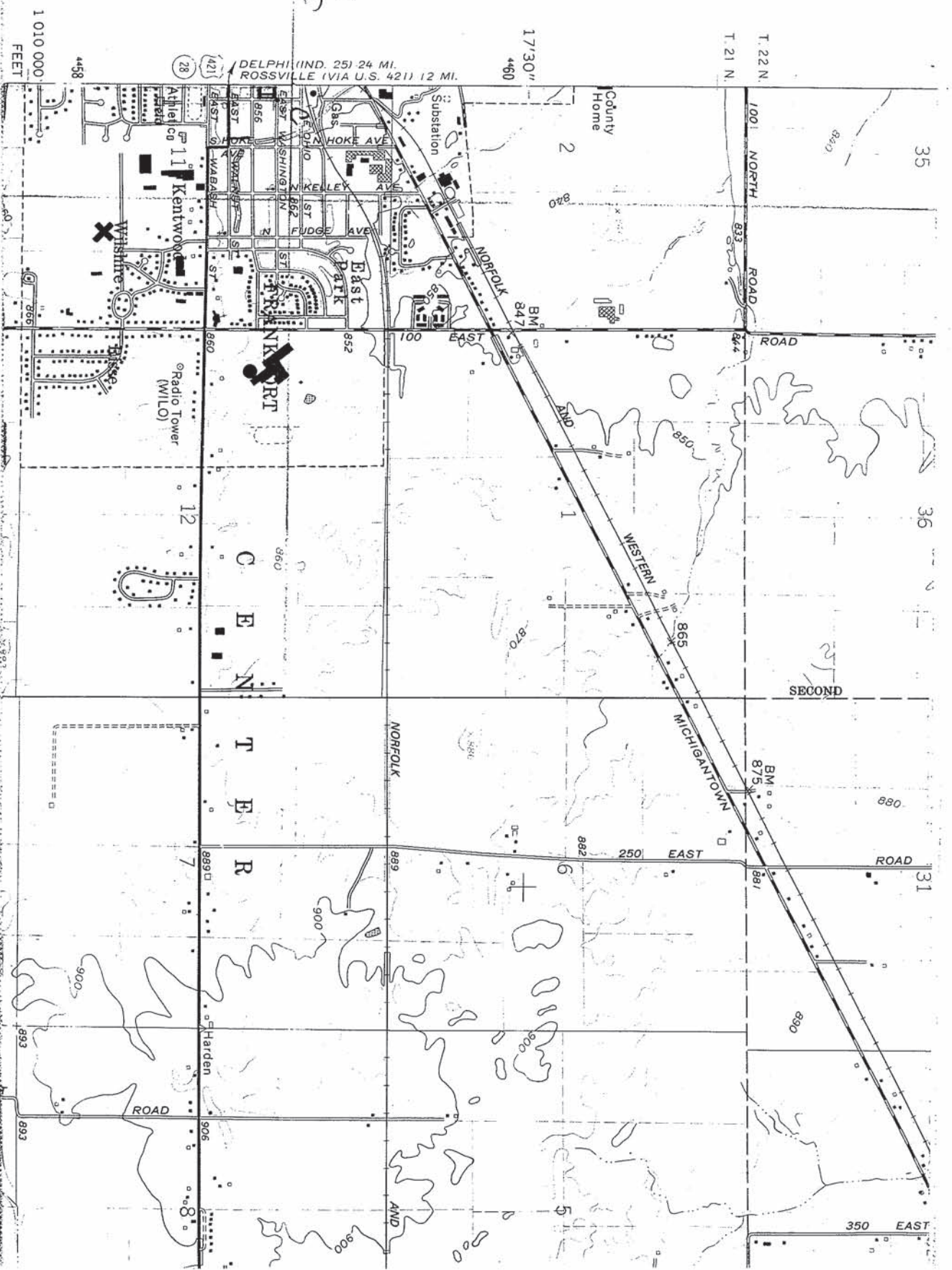
The District boundary encompasses the full collection of properties which fall within the period of significance. On the west, in general, it is demarked by Prairie Creek, a natural and prominent boundary. The northern boundary encompasses primarily E. Clinton Street, the primary location of the principal houses of the district and a portion of E. Washington Street and was drawn, based on the collection of historic properties. Beyond the eastern boundary, primarily Williams Street, there is a change in the complexion of the resources, with considerably more modest properties being prevalent. Where the district encountered modern drives and development, east of Van Buren and south of E. Armstrong, it was drawn accordingly. On the south, Harvard Terrace Historic District abuts the Christian Ridge Historic District although some properties might logically belong to both. We have chosen to follow the recommendations of the Interim Report (Historic Sites and Structures Survey) as we understood them. Thus, with only a few additions (on E. Clinton Street) the district is shown as it was recommended in the survey, where it was called the E. Walnut Street Historic District.

Photographs

The following information is the same for all photographs unless otherwise indicated:

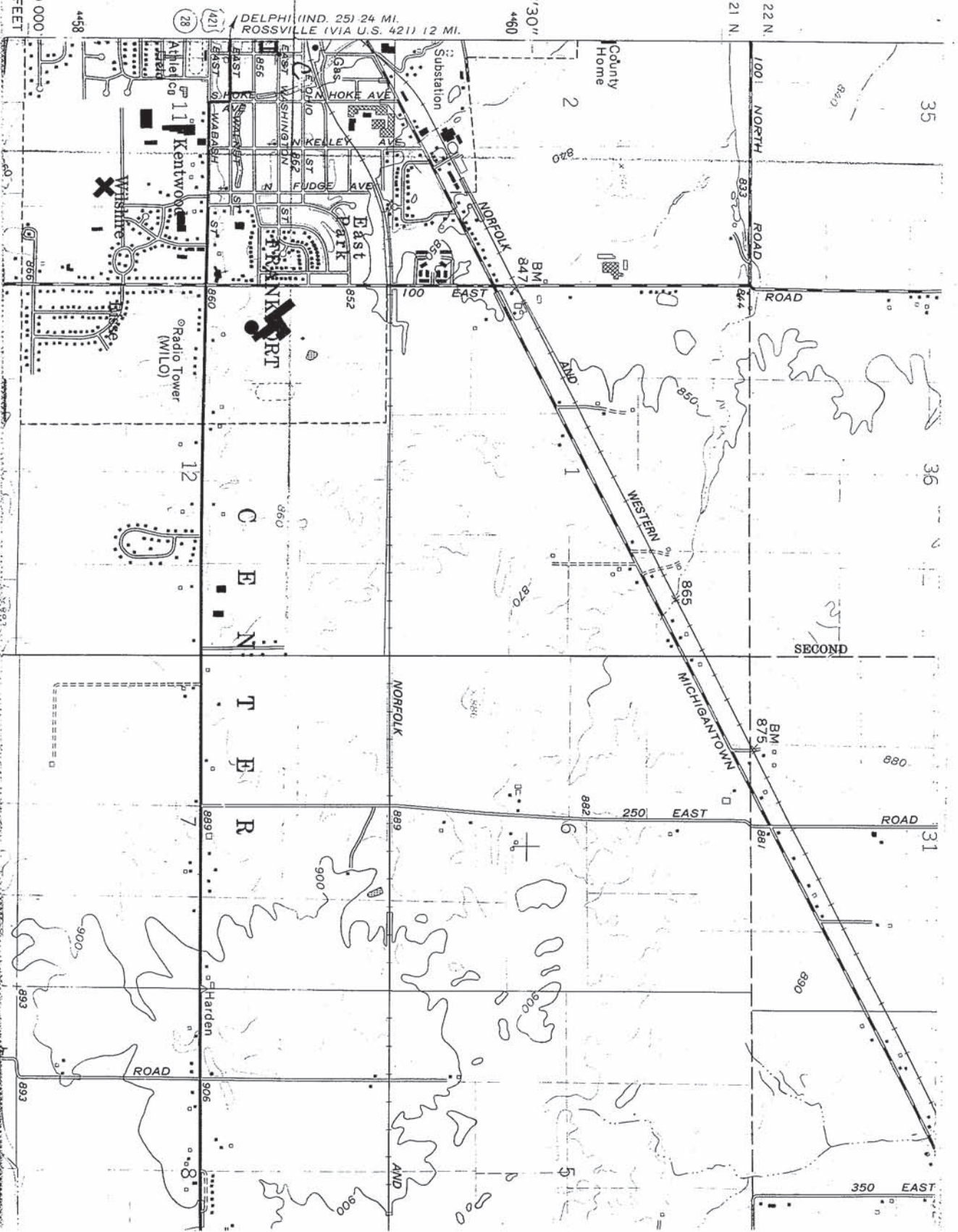
1. Christian Ridge Historic District
2. Clinton County, Indiana
3. Photographers: Cinda May & Thomas W. Salmon II, The Westerly Group, Inc.

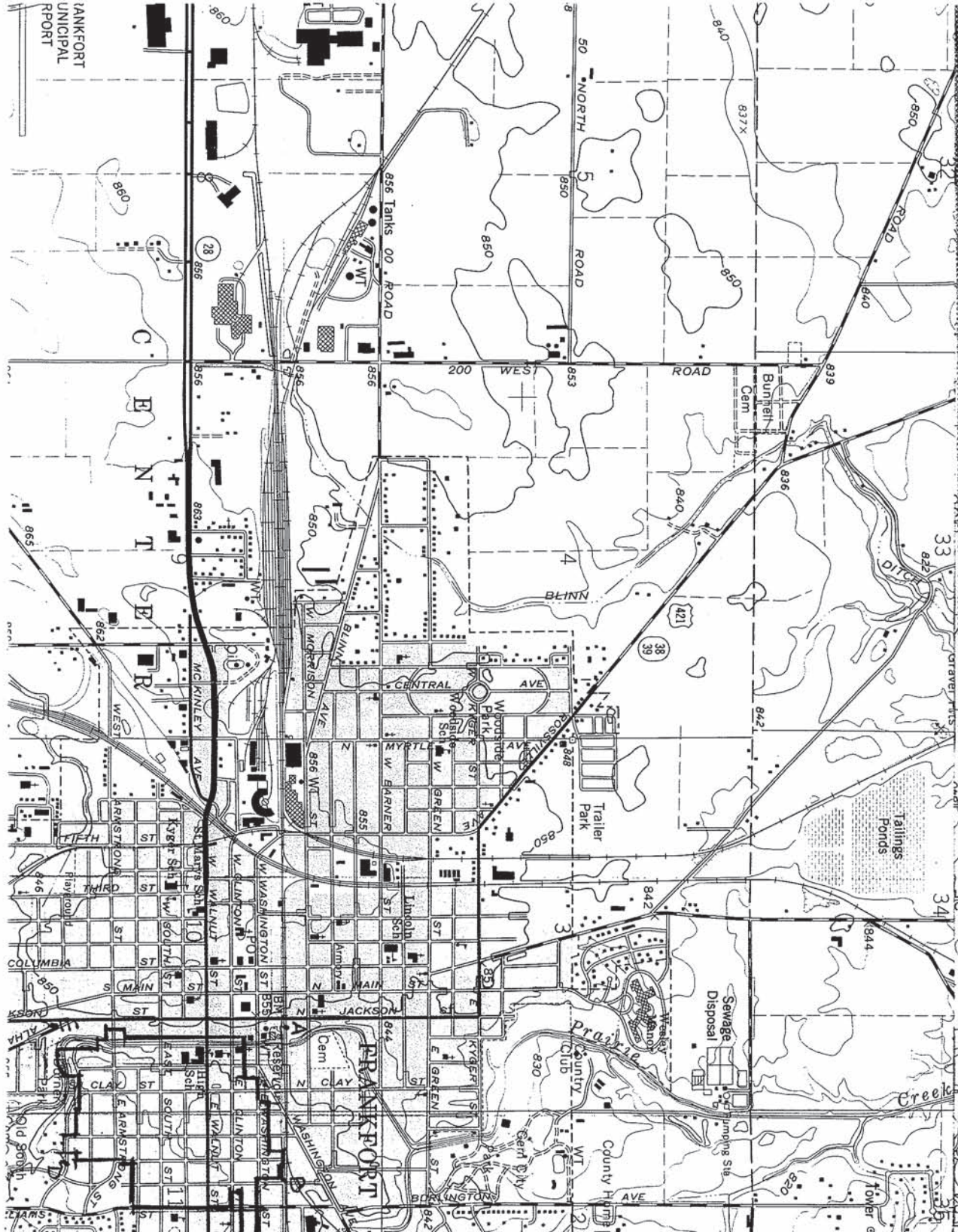
C 16 542580
4458941C



DELPHI (IND. 25) 24 MI.
ROSSVILLE (VIA U.S. 421) 12 MI.

1 010 000
FEET





BOYLESTON 6.2 MI.
INDIANAPOLIS (VIA U.S. 421) 44 MI.

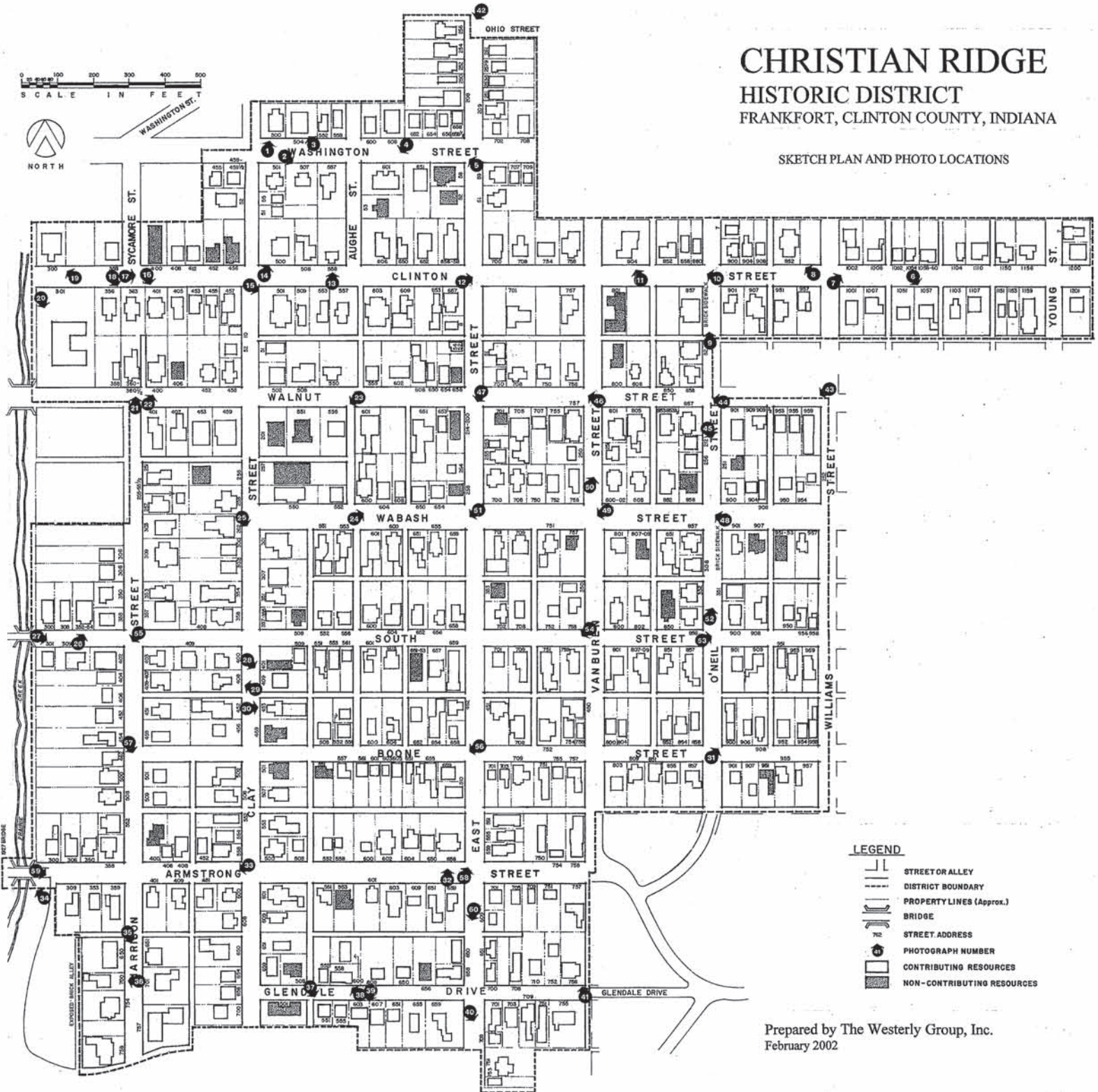
- A 16 541620 4459020
- B 16 5412280 4459021
- C 16 5412560 4458994
- D 16 542220 445810
- E 16 541630 44580

17'30"
4460
T. 22 N.
T. 21 N.

CHRISTIAN RIDGE HISTORIC DISTRICT

FRANKFORT, CLINTON COUNTY, INDIANA

SKETCH PLAN AND PHOTO LOCATIONS



- LEGEND**
- STREET OR ALLEY
 - DISTRICT BOUNDARY
 - PROPERTY LINES (Approx.)
 - BRIDGE
 - STREET ADDRESS
 - PHOTOGRAPH NUMBER
 - CONTRIBUTING RESOURCES
 - NON-CONTRIBUTING RESOURCES

Prepared by The Westerly Group, Inc.
February 2002