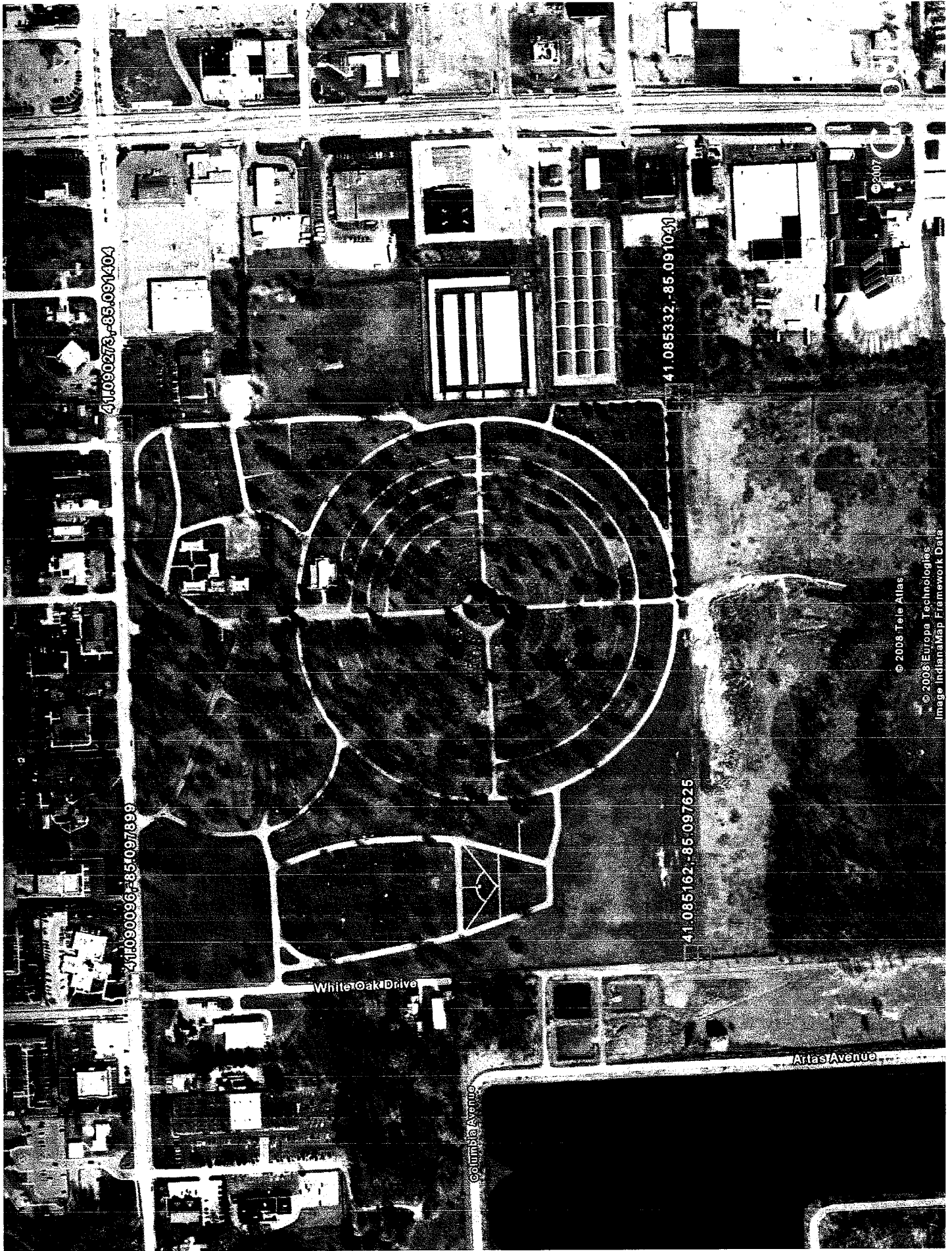


LAKE AVENUE

WHITE OAK AVENUE



41.085332, -85.091040

41.085162, -85.097625

41.085332, -85.091040

41.085162, -85.097625

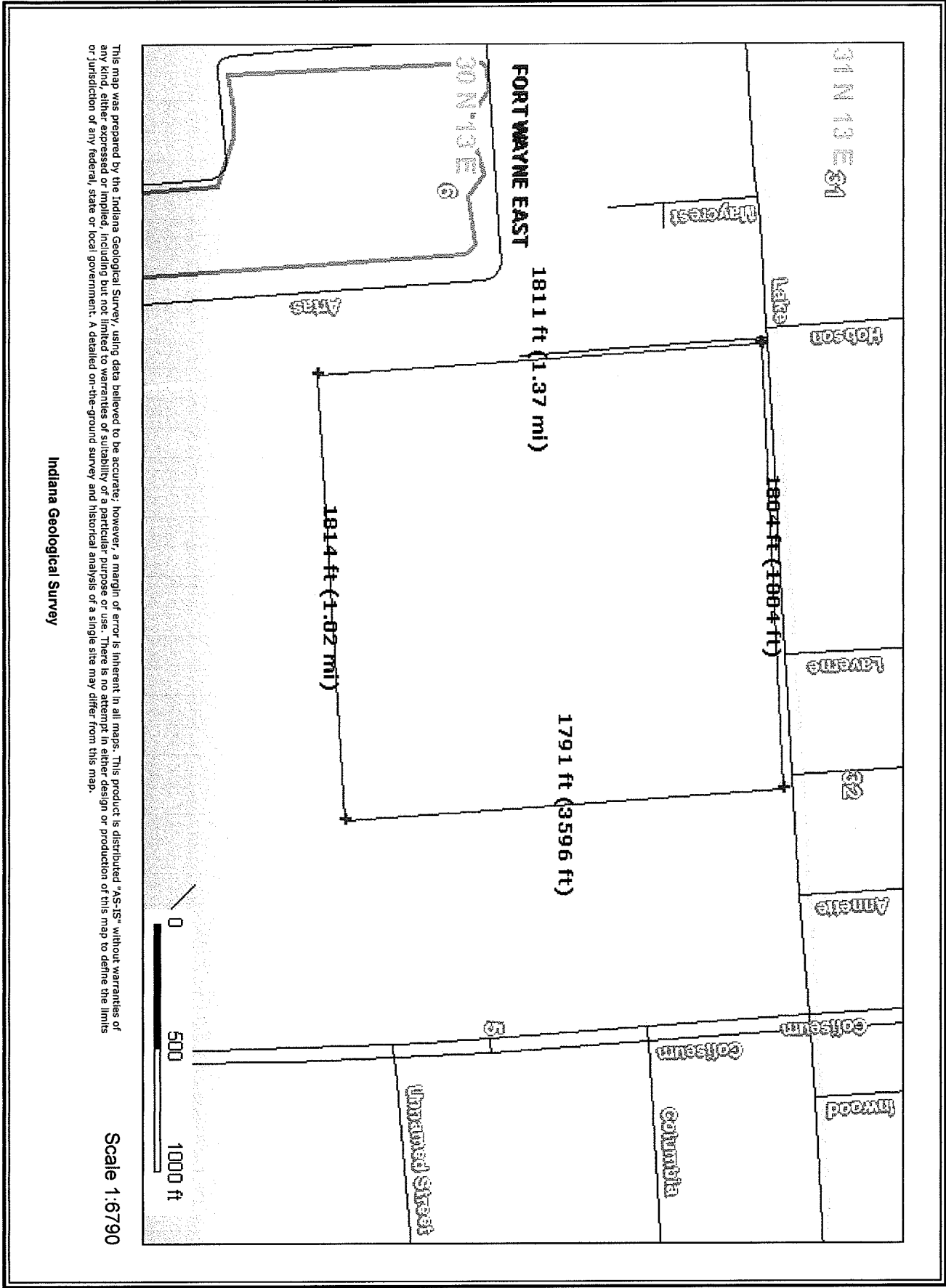
© 2008 Tele Atlas
© 2008 Europa Technologies
Image Indiana Map Framework Data



This map was prepared by the Indiana Geological Survey, using data believed to be accurate; however, a margin of error is inherent in all maps. This product is distributed "AS-IS" without warranties of any kind, either expressed or implied, including but not limited to warranties of suitability of a particular purpose or use. There is no attempt in either design or production of this map to define the limits or jurisdiction of any federal, state or local government. A detailed on-the-ground survey and historical analysis of a single site may differ from this map.

Scale 1:13581

Indiana Geological Survey



CATHOLIC CEMETERY

The cemetery is located at 3500 Lake Avenue, Fort Wayne, In. Years ago; the original Catholic Cemetery was on Cathedral Square. There arose a need for a larger cemetery and the next cemetery was located on Swinney Avenue. After only 29 years, the need arose for another larger location. In 1872, Bishop Dwenger purchased 120 acres, one mile outside the city limits of Fort Wayne. The bodies have been removed from the other two cemeteries into the present location. The cemetery was then opened for interments in 1873.