

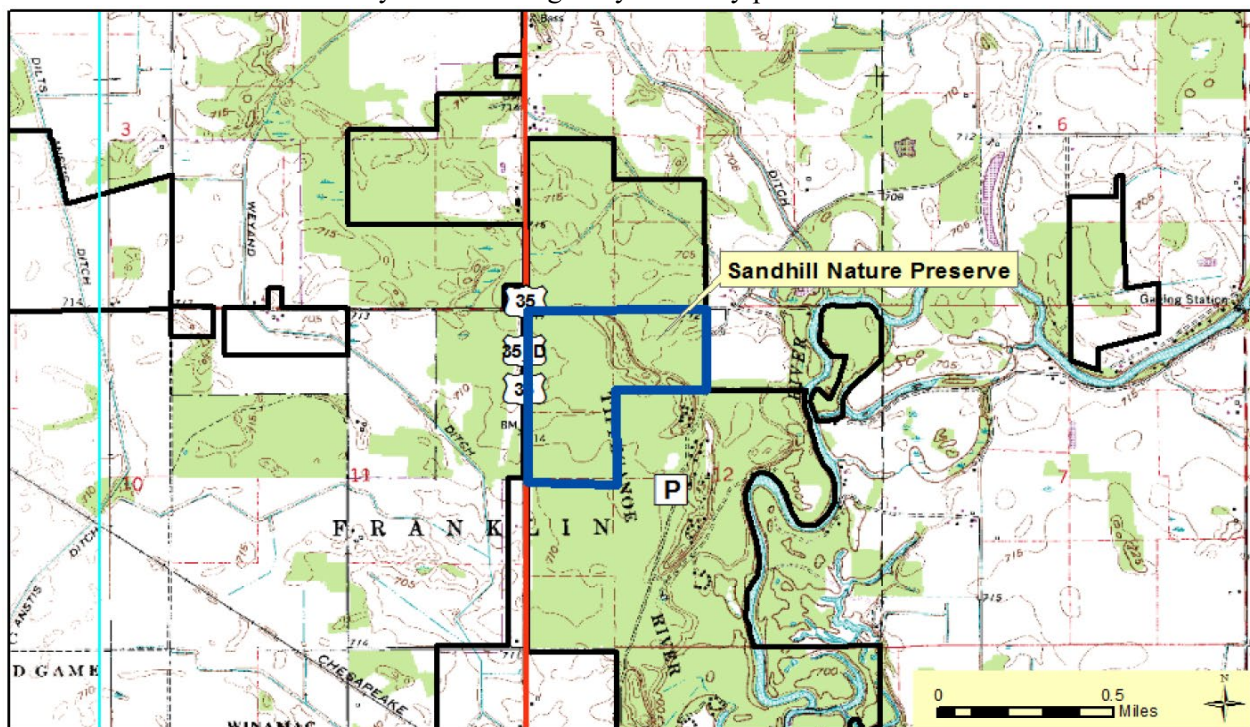
# Sandhill Nature Preserve

County: Pulaski                      Size: 120 acres  
Ownership: State Parks and Reservoirs - IDNR



## Location and Access

**Parking and trail.** This preserve is located at the north end of Tippecanoe River State Park, in Pulaski Co. From Winamac go north on SR 35 about 4 miles to the park entrance. The preserve is located west and north of the rent-a-tent camping area. There is a small parking lot just southeast of the preserve on the road leading to the rent-a-tent area. The lot is marked by a sign. Trail 8 traverses part of this preserve and is 1.4 miles long. The trail is moderate walking on a natural tread surface. Portions of the trail may be wet during rainy or snowy periods.



**Description:** These sand hills were formed during the Wisconsin glacial period, which created the Northern Moraine and Lake Region of Indiana. Large amounts of fine sand were deposited by glacial outwash streams. Later these sands were reworked by winds into flat sand plains and rolling dunes like those found here. In the well-drained upland areas of the preserve black oak dominates and shrub cover is sparse. In the lowland areas, pin oak, black gum, and red maple are typical trees. There are a few areas that are open due to previous disturbance where prairie vegetation has moved in and is flourishing. An effort is being made to maintain these prairie conditions through the use of prescribed fire and other types of brush control.

## Further Information:

Tippecanoe River State Park, RR 4 Box 95A, Winamac, IN 46996. (219) 946-3213. [www.in.gov/dnr/parklake](http://www.in.gov/dnr/parklake)  
Division of Nature Preserves Northwest Regional Ecologist, Matt Beatty: [mbeatty1@dnr.in.gov](mailto:mbeatty1@dnr.in.gov)