

# Barker Woods Nature Preserve

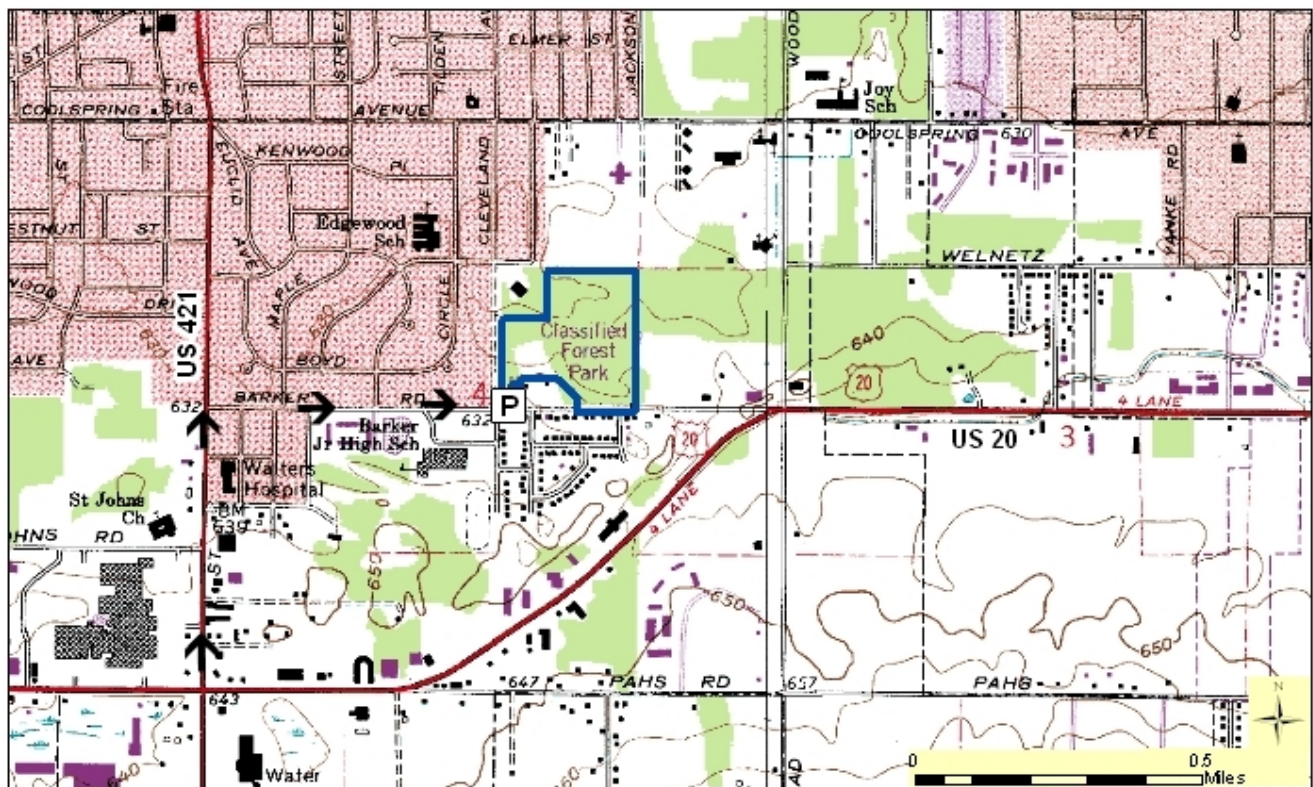
County: LaPorte      Size: 30.59 acres

Ownership: Shirley Heinze Land Trust



## Location and Access

**Parking and trail.** In Michigan City, at the intersection of US 421 (Franklin St) and US 20, travel north on US 421 0.5 mile to Barker Rd. Turn east and go 0.5 mile, cross Cleveland Ave, and turn north (left) into the preserve. The trail is a loop which is less than a mile long and easy to navigate.



**Description:** This wooded tract is in a low depression bordered by sandy slopes. Many of the trees, shrubs, and flowers are more commonly found farther north. Yellow birch grow in peaty deposits, but pin oak and red maple are the dominant trees. Plantations of scotch, jack and red pine have been planted on higher ground near natural stands of white, black and red oaks, black gum, tulip, beech and sugar maple. Blueberry, huckleberry, chokeberry and witch hazel are typical shrubs of low wet depressions in this area. Herbs of moist ground include cinnamon and royal ferns, Canada mayflower, Indian cucumber-root, Canada cinquefoil, and skunk cabbage. Bracken fern blankets drier soil, with associated species of false Solomon's seal, wild lettuce, and asters.

## Further Information:

Shirley Heinze Land Trust, 109 West 700 North, Valparaiso, IN 46385 (219) 242-8558. [www.heinzetrust.org](http://www.heinzetrust.org)  
Division of Nature Preserves, Coastal Regional Ecologist, Derek Nimetz: [dnimetz@dnr.IN.gov](mailto:dnimetz@dnr.IN.gov)  
Indiana Department of Natural Resources