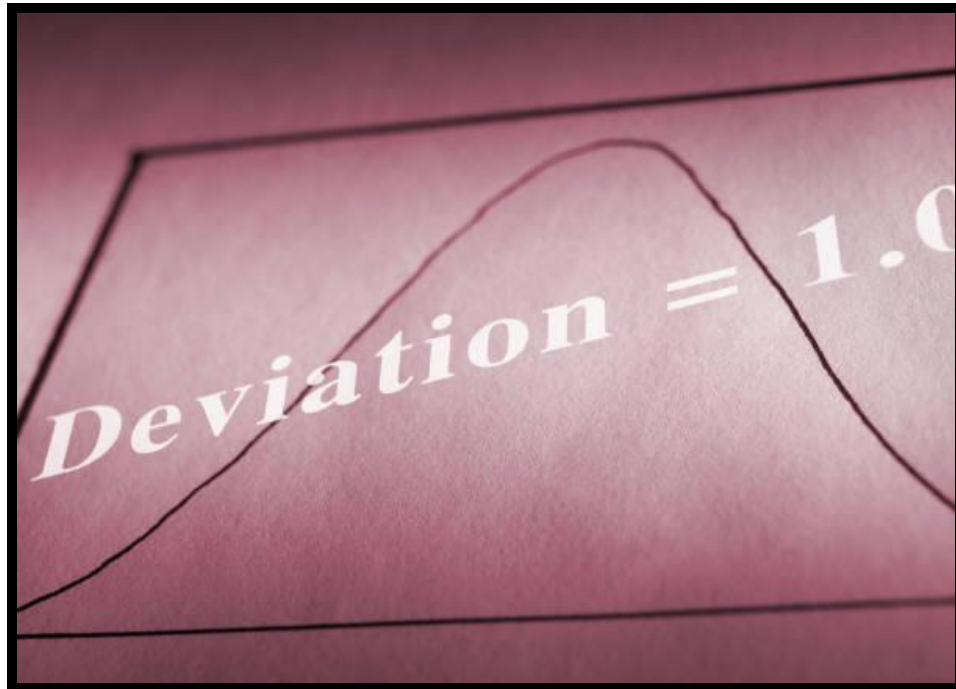


# Indiana Department of Correction

## Division of Data Science and Analytics



## Offender Population Statistical Report

### - JULY 2023 -

Christina Reagle, Commissioner

**Indiana Department of Correction  
Indiana Government Center South, Room E334  
302 W. Washington Street  
Indianapolis, IN 46204**

**Prepared by:  
Tad DeWitt, Data Analyst  
[TDeWitt1@idoc.in.gov](mailto:TDeWitt1@idoc.in.gov)**

**This report and previous reports may be found at:**

**<http://www.in.gov/idoc/2376.htm>**



## Contents

<b>Definitions</b>	<b>1</b>
<b>Population Summary</b>	<b>3</b>
<b>Human Resource Report</b>	<b>4</b>
<b>Offender Statistics for July 2023</b>	<b>7</b>
Current Facility Offender Population . . . . .	7
Monthly Facility Population . . . . .	9
Monthly Parole Caseload . . . . .	10
<b>Adult Offender Statistics</b>	<b>12</b>
Monthly Admissions and Releases for July 2023 . . . . .	12
Admissions by County of Commit for July 2023 . . . . .	13
Release Type by County of Commit for July 2023 . . . . .	15
County Jails by County . . . . .	17
Community Transition Programs Average Daily Populations . . . . .	19
Community Transition Program Release Information . . . . .	20
Total Number of Felony Offenses Committed to the Indiana Department of Correction . . . . .	21
Number of New Admissions by Most Serious Offense Committed to the Indiana Department of Correction . . . . .	35
Population by Most Serious Offense . . . . .	45
Average Daily Adult Female Offender Population in 2023 . . . . .	46
Adult Females Held in County Jails in 2023 . . . . .	47
Average Daily Adult Male Offender Population 2023 . . . . .	48
Adult Males Held in County Jails . . . . .	49
<b>Juvenile Statistics for July 2023</b>	<b>51</b>
Juvenile Admissions and Releases . . . . .	51
Juvenile Admissions by County . . . . .	51
Juvenile Releases by County . . . . .	52
Total Number of Committing Offenses for Juveniles Committed to the Indiana Department of Correction . . . . .	53
Number of Juvenile Offenders by Most Serious Offense Committed to the Indiana Department of Correction . . . . .	55
Juvenile Female New Commitments . . . . .	57
Average Daily Juvenile Female Offender Population . . . . .	58
Juvenile Male New Commitments . . . . .	59
Average Daily Juvenile Male Offender Population for 2023 . . . . .	60
Juvenile Parole Caseload for July 2023 . . . . .	61

# Definitions

## Definitions

**For this report, the following definitions apply:**

**Admission** – The means by which an offender enters the custody or jurisdiction of the Indiana Department of Correction. For this report, except for the return of an escapee, this does not include a return from a temporary absence.

**Average Daily Population** – The sum of the daily beginning counts for a month, divided by that month's number of daily beginning counts.

**Beginning Count** – The number of offenders physically present at the beginning of the day (ie, 0000:01 hours).

**Class A Felony** – An offense whereby a person convicted of this felony shall be imprisoned for a fixed term of thirty years, with not more than twenty years added for aggravating circumstances, or not more than ten years subtracted for mitigating circumstances.

**Class B Felony** – An offense whereby a person convicted of this felony shall be imprisoned for a fixed term of ten years, with not more than ten years added for aggravating circumstances, or not more than four years subtracted for mitigating circumstances.

**Class C Felony** – An offense whereby a person convicted of this felony shall be imprisoned for a fixed term of four years, with not more than four years added for aggravating circumstances, or not more than two years subtracted for mitigating circumstances.

**Class D Felony** – An offense whereby a person convicted of this felony shall be imprisoned for a fixed term of one and one-half years, with not more than one and one-half years added for aggravating circumstances, or not more than one year subtracted for mitigating circumstances.

**Class 1 Felony** – An offense whereby a person convicted of this felony shall be imprisoned with a sentence range of 20-40 years, with not more than twenty years added as a habitual offender enhancement.

**Class 2 Felony** – An offense whereby a person convicted of this felony shall be imprisoned with a sentence range of 10-30 years, with not more than twenty years added as a habitual offender enhancement.

**Class 3 Felony** – An offense whereby a person convicted of this felony shall be imprisoned with a sentence range of 3-16 years, with not more than twenty years added as a habitual offender enhancement.

**Class 4 Felony** – An offense whereby a person convicted of this felony shall be imprisoned with a sentence range of 2-12 years, with not more than twenty years added as a habitual offender enhancement.

**Class 5 Felony** – An offense whereby a person convicted of this felony shall be imprisoned with a sentence range of 1-6 years, with not more than six years added as a habitual offender enhancement.

**Class 6 Felony** – An offense whereby a person convicted of this felony shall be imprisoned with a sentence range of 0.5-2.5 years, with not more than six years added as a habitual offender enhancement.

**Contracted Beds** - Those offenders who have been committed to the Indiana Department of Correction but are housed in a local work release facility under contract of a 3rd party provider.

**County Jail “Back-ups” (Jail Bed Count)** – Those offenders who have been committed to the Indiana Department of Correction but are housed in a county jail until they can be transferred to a Department of Correction intake facility. The county receives \$35.00 per day, per offender, to house these offenders.

**Ending Count** – The number of offenders physically present at the end of the day (i.e., 2400:00 hours).

**Felon** – A person convicted in any jurisdiction who might have been imprisoned for more than one year.

**Murder** - An offense whereby a person convicted of this felony shall be imprisoned for a fixed term of fifty-five years, with not more than ten years added for aggravating circumstances, or not more than ten years subtracted for mitigating circumstances.

**Operational Capacity** – The total bed capacity of the facility. The capacity of a facility is the number of beds authorized for safe and efficient operation of the facility.

**Pre-Dispositional** – An individual ordered by the Court to the Indiana Department of Correction for evaluation prior to sentencing.

**Release** – The means by which an offender leaves the custody or jurisdiction of the Indiana Department of Correction. For this report, except for an escapee, this does not include a temporary absence.

**Safekeeper** – An individual whom the Court has determined to be in imminent danger of serious bodily injury or death, or who represents a substantial threat to the safety of others, and whom the Court has ordered to the Indiana Department of Correction for custody and security control.

**Maximum Level Facilities** – Maximum security facilities have very restrictive security measures and housing is celled space.

**Medium Level Facilities** – Medium security facilities have moderate degree of security measures and housing consists of dormitories and celled space.

**Minimum Level Facilities** – Minimum Security Facilities have the least restrictive security measures and housing is dormitory style. Also included as minimum security are work release program offenders who leave the facility for outside employment but return nightly.

**Intake Facilities** – Intake facilities are designated to receive newly committed adult offenders. During the intake process each

offender is evaluated through interviews, reports and diagnostic tests. This evaluation forms the basis of the offenders' facility and program assignment.

**Secure Housing Units** – Denotes maximum control with the most restrictive security measures in place.

**Vacancy** – The number of beds available for assignment.

**Juvenile Diagnostic/Walkthrough** – A Juvenile court can order a youth to the Department of Correction to be temporarily committed for not more than 14 days (excluding Saturdays, Sundays, and Legal holidays) for the purpose of an evaluation. The youth must be adjudicated delinquent, and the order must be prior to disposition. The department will send a report to the court of the written findings.

# Population Summary

## Summary for July 2023

There were 20,341 adult male offenders (including 625 county jail “back-ups” and 25 in contracted beds) on August 01, 2023. This population is 17% below the operational bed capacity.

There were 2,088 adult female offenders (including 85 county jail “back-ups” and 0 in contracted beds) on August 01, 2023. This population is 36% below the operational bed capacity.

There were 293 juvenile male offenders in the Department’s facilities on August 01, 2023. This population is 34% below the operational bed capacity.

There were 51 juvenile female offenders in the Department’s facilities on August 01, 2023. This population is 18% below the operational bed capacity.

There were 7,835 adult males on parole in Indiana (7,140 Indiana parolees and 518 In State 177 and Out State other jurisdiction parolees) on August 01, 2023.

There were 794 adult females on parole in Indiana (727 Indiana parolees and 54 In State and 13 and Out State other jurisdiction parolees) on August 01, 2023.

There were 1,238 adults admitted to IDOC (1,025 males and 213 females) and 1,115 adults released from IDOC (990 males and 125 females) in July 2023.

There were 27 juveniles admitted to IDOC (25 males and 2 females) and 29 juveniles released from IDOC (18 males and 11 females) in July 2023.

# Human Resource Report

Report date July 2023

Table 1: IDOC Human Resource Report

Facility	Total Staff	Custody	Non-Custody	Vacancies
Branchville Correctional Facility	235	157	78	39
Central Office	645	13	632	62
Chain O'Lakes Correctional Facility	30	23	7	4
Correctional Industrial Facility	255	181	74	112
Edinburgh Correctional Facility	70	53	17	4
Heritage Trails Correctional Facility (DOC Staff)	22	0	22	3
Indiana State Prison	416	312	104	153
Indiana Women's Prison	173	125	48	20
LaPorte Juvenile Correctional	55	39	16	9
Logansport Juvenile Correctional	149	94	55	38
Madison Correctional Facility	191	131	60	24
Miami Correctional Facility	339	230	109	246
New Castle Correctional Facility	189	109	80	128
Pendleton Correctional Facility	343	218	125	178
Pendleton Juvenile Correctional	200	125	75	92
Plainfield Correctional Facility	331	242	89	64
Putnamville Correctional Facility	343	226	117	182
Reception-Diagnostic Center	205	157	48	31
Rockville Correctional Facility	221	153	68	45
South Bend Comm. Re-Entry Center	39	26	13	4
Wabash Valley Correctional Facility	567	439	128	80
Westville Correctional Facility	574	418	156	195
Totals	5592	3471	2121	1713

Table 2: Contractor Human Resource Report

Facility	Aramark	Health	Education
Branchville Correctional Facility	7	31	3
Central Office	0	45	2
Chain O'Lakes Correctional Facility	6	2	0
Correctional Industrial Facility	13	27	2
Edinburgh Correctional Facility	6	5	1
Heritage Trails Correctional Facility (DOC Staff)	0	0	0
Indiana State Prison	17	44	2
Indiana Women's Prison	8	31	3
LaPorte Juvenile Correctional	0	6	4
Logansport Juvenile Correctional	0	14	12
Madison Correctional Facility	9	26	2
Miami Correctional Facility	20	53	5
New Castle Correctional Facility	24	67	7
Pendleton Correctional Facility	15	53	1
Pendleton Juvenile Correctional	0	20	22
Plainfield Correctional Facility	20	54	4

Putnamville Correctional Facility	14	44	7
Reception-Diagnostic Center	0	39	0
Rockville Correctional Facility	13	44	3
South Bend Comm. Re-Entry Center	0	2	0
Wabash Valley Correctional Facility	0	63	3
Westville Correctional Facility	18	64	4
Totals	190	734	87





# Offender Statistics



# Offender Statistics for July 2023

## Current Facility Offender Population

Table 3: Male Minimum Security Level Counts

Facility	Assigned Beds	Available Beds	Held Beds	Down Beds	Total Beds	Capacity Usage
Chain Olakes Correctional Facility	76	27	0	0	103	73.79
Edinburgh Correctional Facility	253	52	0	0	305	82.95
Sub-Total	329	79	0	0	408	78.37

Table 4: Male Medium Security Level Counts

Facility	Assigned Beds	Available Beds	Held Beds	Down Beds	Total Beds	Capacity Usage
Branchville Correctional Facility	1292	180	0	0	1472	87.77
Correctional Industrial Facility	1012	53	0	9	1074	94.23
Putnamville Correctional Facility	1565	336	0	1	1902	82.28
Plainfield Correctional Facility	1397	119	0	2	1518	92.03
New Castle Correctional Facility	2937	154	4	4	3099	94.77
Heritage Trail Correctional Facility	871	39	0	0	910	95.71
Westville Correctional Facility	2245	524	0	0	2769	81.08
Sub-Total	11319	1405	4	16	12744	89.70

Table 5: Male Maximum Security Level Counts

Facility	Assigned Beds	Available Beds	Held Beds	Down Beds	Total Beds	Capacity Usage
Indiana State Prison	2265	81	5	4	2355	96.18
Pendleton Correctional Facility	1477	70	0	19	1566	94.32
Miami Correctional Facility	1533	72	0	204	1809	84.74
Reception Diagnostic Center	657	36	0	0	693	94.81
Wabash Valley Correctional Facility	1980	142	0	5	2127	93.09
Sub-Total	7912	401	5	232	8550	92.63

Table 6: Male Work Release Counts

Facility	Assigned Beds	Available Beds	Held Beds	Down Beds	Total Beds	Capacity Usage
South Bend Community Re-Entry Center	131	52	0	0	183	71.58
Wcc - Community Pi/Tc Starke Co Jail	24	6	0	0	30	80.00
Evansville Voa Work Release	0	3	0	0	3	0.00
Lake County Re-Entry Center	1	0	0	0	1	100.00
Sub-Total	156	61	0	0	217	62.89

Table 7: Female Minimum Security Level Counts

Facility	Assigned Beds	Available Beds	Held Beds	Down Beds	Total Beds	Capacity Usage
Craine House Work Release Center	0	14	0	0	14	0.00
Madison Correctional Facility	582	118	0	0	700	83.14
Sub-Total	582	132	0	0	714	41.57

Table 8: Female Medium Security Level Counts

Facility	Assigned Beds	Available Beds	Held Beds	Down Beds	Total Beds	Capacity Usage
----------	---------------	----------------	-----------	-----------	------------	----------------

Rockville Correctional Facility	822	174	0	0	996	82.53
Sub-Total	822	174	0	0	996	82.53

Table 9: Female Maximum Security Level Counts

Facility	Assigned Beds	Available Beds	Held Beds	Down Beds	Total Beds	Capacity Usage
Indiana Womens Prison	599	67	0	0	666	89.94
Sub-Total	599	67	0	0	666	89.94

Table 10: Female Work Release Level Counts

Facility	Assigned Beds	Available Beds	Held Beds	Down Beds	Total Beds	Capacity Usage
Sub-Total	0	0	0	0	0	0

Table 11: Male Juvenile Counts

Facility	Assigned Beds	Available Beds	Held Beds	Down Beds	Total Beds	Capacity Usage
Logansport Juvenile Correctional Facility	145	42	0	0	187	77.54
Pendleton Juvenile Corr. Facility	148	126	0	0	274	54.01
Sub-Total	293	168	0	0	461	65.78

Table 12: Female Juvenile Counts

Facility	Assigned Beds	Available Beds	Held Beds	Down Beds	Total Beds	Capacity Usage
Laporte Juvenile Correctional Facility	51	11	0	0	62	82.26
Sub-Total	51	11	0	0	62	82.26

Table 13: Jail Count Totals

Facility	Male	Female
Jail Counts	625	85

Table 14: Grand Total for Males

Facility	Assigned Beds	Available Beds	Held Beds	Down Beds	Total Beds	Capacity Usage
Sub-Total	19716	1946	9	248	21919	80.9

Table 15: Grand Total for Females

Facility	Assigned Beds	Available Beds	Held Beds	Down Beds	Total Beds	Capacity Usage
Sub-Total	2003	1665	0	0	2376	53.51

Table 16: Grand Totals for All Adult Facilities

Male Total	Female Total	Total Offenders
20341	2088	22429

## Monthly Facility Population

Table 17: Facility Population for each Month

Date	Adult Male	Adult Female	Juvenile Male	Juvenile Female	Total
2022-01-01	20752	2067	241	37	23097
2022-02-01	20530	2002	248	37	22817
2022-03-01	20537	2044	251	39	22871
2022-04-01	20685	2093	273	38	23089
2022-05-01	20796	2103	270	35	23204
2022-06-01	20667	2074	271	41	23053
2022-07-01	20720	2067	280	38	23105
2022-08-01	20739	2079	279	35	23132
2022-09-01	20727	2060	273	38	23098
2022-10-01	20700	2087	284	39	23110
2022-11-01	20794	2090	288	42	23214
2022-12-01	20719	2118	300	40	23177
2023-01-01	20715	2112	299	44	23170
2023-02-01	20756	2140	299	43	23238
2023-03-01	20752	2145	297	45	23239
2023-04-01	20848	2082	311	50	23291
2023-05-01	20778	2061	303	48	23190
2023-06-01	19669	1944	302	47	21962
2023-07-01	19740	1974	281	51	22046
2023-08-01	19716	2003	293	51	22063

# Monthly Parole Caseload

Parole Caseload in July 2023

Table 18: Male Parole District Caseload

Parole District	Parolee Count	Other Jurisdiction	Interstate Compact
PD0	557	83	159
PD1	395	42	2
PD2	825	45	2
PD3	1091	67	2
PD4	566	21	2
PD5	444	29	1
PD6	579	83	2
PD7	798	26	0
PD8	777	46	4
PD9	504	54	0
PD10	604	22	3
PD Totals	7140	518	177

Table 19: Female Parole District Caseload

Parole District	Parolee Count	Other Jurisdiction	Interstate Compact
PD0	31	6	11
PD1	35	3	0
PD2	89	3	0
PD3	85	11	0
PD4	66	7	0
PD5	56	7	0
PD6	33	4	2
PD7	123	5	0
PD8	69	2	0
PD9	81	4	0
PD10	59	2	0
PD Totals	727	54	13

Table 20: Parole District Population History for each Month

Date	Male Parolee	Female Parolee	Other Jurisdiction Male	Interstate Male	Other Jurisdiction Female	Interstate Female
2022-09-01	5618	508	NA	NA	NA	NA
2022-10-01	5682	506	NA	NA	NA	NA
2022-11-01	5800	519	NA	NA	NA	NA
2022-12-01	5842	540	NA	NA	NA	NA
2023-01-01	5817	528	NA	NA	NA	NA
2023-02-01	5858	553	NA	NA	NA	NA
2023-03-01	5920	564	NA	NA	NA	NA
2023-04-01	5557	542	750	213	100	16
2023-05-01	5819	583	589	216	78	17
2023-06-01	6004	586	582	209	74	16
2023-07-01	7124	723	518	178	54	13
2023-08-01	7140	727	518	177	54	13



# Adult Offender Statistics



# Adult Offender Statistics

## Monthly Admissions and Releases for July 2023

Table 21: Admissions For Month

Admission Reason	Male	Female	Total
New Commitments	599	134	733
Parole Violator - New Commit	13	0	13
Parole Violator - Technical	68	5	73
Unsentenced (Safekeepers)	1	0	1
Return from Esc - Non-Secure Facility	72	5	77
Return from Esc - Secure Facility	5	1	6
Court Supervision Violators - New Commits	128	34	162
Court Supervision Violators - Technical	123	34	157
Return from CTP - Technical	1	0	1
Other	15	0	15
<b>Total Admissions</b>	<b>1025</b>	<b>213</b>	<b>1238</b>

*Note:*

"Other" includes alternatively sentenced youth, parole sanctions, and pending parole hearings.

Table 22: Releases For Month

Release Reason	Male	Female	Total
Parole	486	51	537
Probation	319	41	360
Discharged	106	17	123
Unsentenced Discharged	8	3	11
Other	35	6	41
Community Transition Program (CTP)	31	6	37
Unknown	5	1	6
<b>Total Releases</b>	<b>990</b>	<b>125</b>	<b>1115</b>

## Admissions by County of Commit for July 2023

Table 23: Admissions by County of Commit

COUNTY	F1	F2	F3	F4	F5	F6	FA	FB	FC	FD	M	Total
Adams	0	1	1	0	2	1	0	0	0	0	0	5
Allen	1	2	8	13	38	25	0	4	2	0	1	94
Bartholomew	1	1	4	0	3	2	0	2	0	0	0	13
Benton	0	0	0	0	1	0	0	0	0	0	0	1
Blackford	0	0	0	0	2	3	0	0	0	0	0	5
Boone	0	2	3	1	4	2	0	2	0	0	0	14
Brown	0	0	0	0	0	3	0	0	0	0	0	3
Carroll	0	0	0	1	2	1	0	0	0	0	0	4
Cass	0	0	2	1	6	2	0	0	1	0	0	12
Clark	0	0	1	2	0	0	2	0	0	0	0	5
Clay	0	0	0	1	0	0	0	0	0	0	0	1
Clinton	0	0	0	0	5	1	0	0	0	0	0	6
Crawford	0	0	1	0	0	0	0	0	0	0	0	1
Daviess	0	0	1	0	1	0	0	1	0	0	0	3
De Kalb	1	0	1	1	1	4	0	0	0	0	0	8
Dearborn	0	1	0	2	2	4	0	0	0	1	0	10
Decatur	0	1	2	1	3	0	0	1	1	0	0	9
Delaware	2	0	0	3	2	0	0	1	0	0	1	9
Dubois	0	0	0	2	0	2	0	1	0	0	0	5
Elkhart	0	4	8	6	11	7	4	2	0	0	0	42
Fayette	0	0	0	1	4	1	1	0	0	0	0	7
Floyd	1	2	2	2	0	1	0	0	0	0	0	8
Fountain	0	1	0	0	3	5	0	0	0	0	0	9
Franklin	0	0	2	1	1	2	0	0	0	0	0	6
Fulton	0	0	1	1	1	0	0	0	0	0	0	3
Gibson	0	0	0	1	2	6	0	0	0	0	0	9
Grant	0	1	2	3	5	2	0	0	0	0	0	13
Greene	2	0	3	0	5	5	0	0	0	0	0	15
Hamilton	0	0	2	1	3	4	0	2	0	0	0	12
Hancock	0	1	1	2	6	0	1	0	0	0	0	11
Harrison	0	0	1	0	1	4	0	0	0	0	0	6
Hendricks	1	1	3	1	1	0	0	2	0	0	0	9
Henry	1	1	2	0	1	4	0	1	0	0	0	10
Howard	0	0	3	2	5	9	1	2	0	0	0	22
Huntington	0	0	0	1	10	10	2	0	1	0	0	24
Jackson	0	0	2	1	2	0	0	0	0	0	0	5
Jasper	0	0	2	0	4	0	0	0	0	0	0	6
Jay	0	1	0	0	6	1	0	0	0	0	0	8
Jefferson	0	1	2	5	8	5	0	0	0	0	0	21
Jennings	1	0	0	2	1	0	0	1	0	0	0	5
Johnson	0	5	2	8	11	12	0	0	0	0	0	38
Knox	0	0	0	1	2	2	0	0	0	0	0	5
Kosciusko	0	0	4	0	7	1	0	1	0	0	0	13
La Porte	0	1	4	1	9	0	0	0	0	0	0	15
Lagrange	0	0	0	0	1	0	0	0	0	0	0	1



Lake	1	1	1	5	6	1	0	2	2	0	2	21
Lawrence	0	0	0	0	7	9	0	0	1	0	0	17
Madison	0	1	1	6	13	21	2	2	1	0	0	47
Marion	4	7	45	42	77	5	0	10	1	0	4	195
Marshall	0	1	2	1	3	2	0	0	0	0	0	9
Martin	0	0	0	1	0	0	0	0	0	0	0	1
Miami	0	0	0	2	5	1	0	0	0	0	0	8
Monroe	0	0	3	1	5	1	0	2	0	0	0	12
Montgomery	0	0	1	0	2	7	0	1	0	0	0	11
Morgan	0	0	0	0	2	0	0	0	0	0	0	2
Newton	0	1	0	0	0	4	0	1	0	0	0	6
Noble	0	0	2	2	1	4	0	0	0	0	0	9
Ohio	0	0	0	1	0	0	0	0	0	0	0	1
Orange	0	0	0	1	1	0	0	0	0	0	0	2
Owen	0	0	0	0	1	1	0	0	0	0	0	2
Parke	0	0	1	4	1	1	0	0	0	0	0	7
Perry	0	1	1	0	4	0	0	0	0	0	0	6
Pike	0	0	0	2	3	0	0	0	0	0	0	5
Porter	0	2	1	4	7	0	0	1	0	0	0	15
Posey	0	1	2	1	6	5	0	1	0	0	0	16
Pulaski	0	0	0	0	0	1	0	0	0	0	0	1
Putnam	0	0	1	1	0	0	0	0	0	0	0	2
Randolph	0	0	0	0	1	0	0	0	0	0	0	1
Ripley	0	0	0	1	4	5	0	0	0	0	0	10
Rush	0	0	0	0	5	2	0	0	0	0	0	7
Saint Joseph	1	0	2	3	15	7	0	0	0	0	2	30
Scott	0	0	1	4	3	2	0	2	0	0	0	12
Shelby	0	2	2	1	2	4	1	0	0	0	0	12
Spencer	0	0	0	0	2	1	0	0	0	0	0	3
Starke	0	0	0	0	0	0	0	1	0	0	0	1
Steuben	0	0	2	4	2	4	0	0	0	0	0	12
Sullivan	0	0	0	0	4	5	0	0	0	0	0	9
Switzerland	0	0	1	1	3	2	0	0	0	0	0	7
Tippecanoe	0	1	4	1	4	3	1	1	0	0	0	15
Tipton	0	0	0	0	1	0	0	0	0	0	0	1
Vanderburgh	1	6	9	15	33	32	0	3	1	0	1	101
Vermillion	0	0	0	0	0	1	0	1	0	0	0	2
Vigo	1	3	3	7	7	0	0	3	0	0	0	24
Wabash	0	0	1	1	4	1	0	0	0	0	0	7
Warren	0	0	0	2	0	2	0	1	0	0	0	5
Warrick	0	1	1	2	7	2	0	0	0	0	0	13
Washington	0	0	0	6	3	5	0	0	0	0	0	14
Wayne	0	1	2	3	3	7	0	0	0	0	0	16
Wells	1	1	0	1	0	1	0	0	1	0	0	5
White	0	1	0	0	0	1	0	0	0	0	0	2
Whitley	0	0	1	1	1	0	0	0	0	0	0	3
Totals	20	58	160	195	430	281	15	55	12	1	11	1238

## Release Type by County of Commit for July 2023

Table 24: Release Type by County of Commit

COUNTY	Parole	Probation	Discharged	Unsentenced Discharged	Other	Community Transition Program (CTP)	Unknown	Total
Adams	2	0	0	0	1	0	0	3
Allen	40	28	7	0	1	6	0	82
Bartholomew	3	6	1	0	0	2	0	12
Blackford	3	1	0	0	0	0	0	4
Boone	3	3	0	0	0	0	0	6
Cass	4	2	0	0	2	0	0	8
Clark	5	2	0	0	0	0	0	7
Clay	3	0	0	0	0	1	0	4
Clinton	5	3	0	0	0	0	0	8
Crawford	1	0	0	0	0	0	0	1
Daviess	5	0	0	0	0	0	0	5
Dearborn	5	3	1	0	0	0	0	9
Decatur	6	2	0	0	0	0	0	8
Delaware	8	3	1	0	1	0	0	13
Dubois	3	2	0	0	0	0	0	5
Elkhart	10	8	0	0	0	1	0	19
Fayette	3	0	2	0	0	0	0	5
Floyd	2	3	1	0	0	0	0	6
Fountain	2	0	0	0	0	0	0	2
Franklin	1	1	2	0	0	0	0	4
Fulton	2	3	0	0	0	0	0	5
Gibson	2	0	0	0	0	0	0	2
Grant	3	9	1	0	0	0	0	13
Greene	0	2	1	0	0	1	0	4
Hamilton	3	3	1	0	0	0	0	7
Hancock	3	1	1	0	0	0	0	5
Harrison	1	2	0	0	0	0	0	3
Hendricks	3	1	0	0	1	0	1	6
Henry	4	3	0	0	0	1	0	8
Howard	3	11	1	0	0	4	1	20
Huntington	9	4	2	0	1	0	0	16
Jackson	8	1	0	0	0	1	0	10
Jasper	1	1	0	0	0	0	0	2
Jay	4	2	1	0	0	0	0	7
Jefferson	7	1	0	0	0	1	0	9
Jennings	4	0	1	0	0	1	0	6
Johnson	7	7	0	0	1	0	0	15
Knox	1	2	2	0	0	0	0	5
Kosciusko	3	2	0	0	0	0	0	5
Lagrange	0	1	0	0	0	0	0	1
Lake	12	4	2	0	0	2	1	21
Lawrence	11	5	2	0	2	0	1	21
Madison	21	12	2	0	2	0	0	37

Marion	124	73	25	0	9	4	0	235
Marshall	5	2	0	0	0	2	0	9
Miami	2	1	0	0	0	0	0	3
Monroe	6	1	1	0	0	2	0	10
Montgomery	5	1	0	0	0	0	0	6
Morgan	6	3	2	0	1	0	0	12
Newton	1	0	0	0	0	0	0	1
Noble	3	4	1	0	0	0	0	8
Ohio	0	1	0	0	0	0	0	1
Orange	7	2	0	0	0	0	0	9
Owen	0	1	0	0	0	0	0	1
Parke	2	0	0	0	0	0	0	2
Perry	1	2	0	0	0	0	0	3
Pike	1	0	2	0	0	0	0	3
Posey	3	0	1	0	0	0	0	4
Pulaski	0	2	0	0	0	0	0	2
Putnam	0	3	0	0	0	0	0	3
Randolph	0	0	0	0	1	0	0	1
Ripley	4	1	0	0	0	0	0	5
Rush	2	1	1	0	0	0	0	4
Saint Joseph	14	9	3	0	0	0	0	26
Scott	4	0	0	0	0	0	0	4
Shelby	5	1	1	0	0	0	0	7
Starke	2	2	1	0	0	0	0	5
Steuben	1	0	0	0	0	1	0	2
Sullivan	2	4	0	0	1	0	0	7
Switzerland	1	0	0	0	0	0	0	1
Tippecanoe	9	15	1	0	3	2	0	30
Tipton	1	0	0	0	0	0	0	1
Vanderburgh	30	10	2	0	0	0	0	42
Vermillion	4	0	0	0	0	0	0	4
Vigo	7	8	0	0	0	1	1	17
Wabash	3	4	1	0	0	1	0	9
Warren	1	0	0	0	0	0	0	1
Warrick	3	0	1	0	0	0	0	4
Washington	0	3	0	0	0	0	0	3
Wayne	7	4	0	0	0	0	0	11
Wells	2	2	0	0	0	1	0	5
White	1	1	0	0	0	1	0	3
Totals	495	305	75	0	27	36	5	943

## County Jails by County

July 2023

Table 25: County Jails by County

County	Male	Female
Adams	5	1
Allen	18	2
Bartholomew	8	2
Benton	0	0
Blackford	4	4
Boone	7	1
Brown	2	0
Carroll	3	1
Cass	15	1
Clark	13	2
Clay	6	0
Clinton	9	2
Crawford	1	0
Daviess	0	0
Dearborn	15	0
Decatur	7	2
Dekalb	7	1
Delaware	22	0
Dubois	11	0
Elkhart	30	4
Fayette	3	0
Floyd	9	1
Fountain	4	0
Franklin	1	0
Fulton	4	0
Gibson	3	2
Grant	2	0
Greene	7	0
Hamilton	9	1
Hancock	8	0
Harrison	5	1
Hendricks	5	1
Henry	3	0
Howard	5	3
Huntington	4	3
Jackson	1	0
Jasper	3	1
Jay	11	1
Jefferson	11	3
Jennings	3	0
Johnson	21	1
Knox	6	2
Kosciusko	4	0
Lagrange	6	0

Lake	8	2
LaPorte	5	0
Lawrence	4	4
Madison	21	4
Marion	41	3
Marshall	9	1
Martin	0	1
Miami	3	1
Monroe	9	0
Montgomery	7	1
Morgan	10	1
Newton	2	1
Noble	9	0
Ohio	1	0
Orange	4	0
Owen	2	0
Parke	2	1
Perry	1	2
Pike	2	1
Porter	1	0
Posey	6	3
Pulaski	2	0
Putnam	7	0
Randolph	4	0
Ripley	5	3
Rush	1	1
Saint Joseph	15	2
Scott	6	0
Shelby	9	1
Spencer	1	0
Starke	2	0
Steuben	7	0
Sullivan	4	0
Switzerland	1	1
Tippecanoe	28	0
Tipton	4	0
Union	0	0
Vanderburgh	16	2
Vermillion	2	0
Vigo	1	0
Wabash	4	2
Warren	3	0
Warrick	2	0
Washington	6	4
Wayne	10	0
Wells	13	0
White	4	0
Whitley	0	0
Jail Counts	625	85

## Community Transition Programs Average Daily Populations

Table 26: Community Transtion Programs Average Daily Populations

Date	Average CTP
2020-09-01	262
2020-10-01	259
2020-11-01	270
2020-12-01	275
2021-01-01	301
2021-02-01	304
2021-03-01	300
2021-04-01	291
2021-05-01	270
2021-06-01	291
2021-07-01	293
2021-08-01	275
2021-09-01	270
2021-10-01	271
2021-11-01	261
2021-12-01	262
2022-01-01	264
2022-02-01	275
2022-03-01	286
2022-04-01	281
2022-05-01	267
2022-06-01	244
2022-07-01	222
2022-08-01	220
2022-09-01	200
2022-10-01	184
2022-11-01	169
2022-12-01	171
2023-01-01	158
2023-02-01	153
2023-03-01	150
2023-04-01	131
2023-05-01	131
2023-06-01	118
2023-07-01	102
2023-08-01	102

## Community Transition Program Release Information

Table 27: Community Transition Program Release Information

Offense Level	Count
F2	1
F3	5
F4	9
F5	6
F6	7
FB	3
M	1
Total	32

## Total Number of Felony Offenses Committed to the Indiana Department of Correction

Table 28: Total Number of Felony Offenses Committed to the Indiana Department of Correction

Offense Level	Primary Offense	Male	Female	YTD Male	YTD Female
F1	Aggravated Battery (35-42-2-1.5)	0	0	1	0
F1	Aiding Deal Controlled Substance Result Death (35-42-1-1.5)	0	0	2	0
F1	Aiding Murder (35-42-1-1)	0	0	0	1
F1	Aiding Rape (35-42-4-1)	0	0	0	1
F1	Attempted Attempted Murder (35-42-1-1(1))	0	0	1	0
F1	Attempted Child Molesting (35-42-4-3)	0	0	1	0
F1	Attempted Murder (35-42-1-1(1))	5	1	14	2
F1	Attempted Murder (35-42-1-1)	0	0	11	2
F1	Attempted Rape (35-42-4-1)	1	0	1	0
F1	Burglary (35-43-2-1)	1	0	4	0
F1	Child Molesting (35-42-4-3)	11	1	73	1
F1	Conspiracy Murder (35-42-1-1)	1	0	1	0
F1	Deal Controlled Substance Result Death (35-42-1-1.5)	0	0	2	0
F1	Firearm Enhancement (35-50-2-11)	0	0	1	0
F1	Murder (35-42-1-1)	1	0	8	1
F1	Neglect Of Dependent Resulting In Death (35-46-1-4)	2	1	6	5
F1	Rape (35-42-4-1)	1	0	7	0
F2	Aiding Voluntary Manslaughter (35-42-1-3)	0	0	1	0
F2	Attempted Burglary (35-43-2-1)	0	0	2	0
F2	Attempted Robbery (Serious Bodily Injury) (35-42-5-1)	0	0	6	1
F2	Burglary (35-43-2-1)	3	0	20	1
F2	Conspiracy Burglary (35-43-2-1)	0	0	1	0
F2	Conspiracy Dealing In Cocaine Or Narcotic Drug (35-48-4-1)	0	0	5	0
F2	Conspiracy Dealing In Methamphetamine (35-48-4-1.1)	2	0	10	0
F2	Conspiracy Murder (35-42-1-1)	0	0	0	1
F2	Conspiracy Robbery (Serious Bodily Injury) (35-42-5-1)	1	0	1	0
F2	Criminal Confinement (35-42-3-3)	0	0	1	0
F2	Dealing A Sched I, Ii, Iii Control Subst (35-48-4-2)	2	2	10	3
F2	Dealing In Cocaine Or Narcotic Drug (35-48-4-1)	13	0	67	4
F2	Dealing In Methamphetamine (35-48-4-1.1)	26	8	141	31
F2	Firearm Enhancement (35-50-2-11)	1	0	1	0
F2	Habitual Offender (35-50-2-8)	3	0	4	0
F2	Manufacturing Meth At Least 10 Grams (35-48-4-1.2)	0	0	1	0
F2	Robbery (Serious Bodily Injury) (35-42-5-1)	2	0	16	1
F2	Voluntary Manslaughter (35-42-1-3)	5	0	28	2



F3	Aggravated Battery (35-42-2-1.5)	18	1	95	6
F3	Aiding Aggravated Battery (35-42-2-1.5)	1	0	3	1
F3	Aiding Dealing In Methamphetamine (35-48-4-1.1)	0	0	0	1
F3	Aiding Robbery (Armed Or Bodily Injury) (35-42-5-1)	3	0	9	0
F3	Arson (35-43-1-1)	1	0	1	0
F3	Attempted Aggravated Battery (35-42-2-1.5)	3	1	9	2
F3	Attempted Human Sexual Trafficking (35-42-3.5-1)	0	0	1	0
F3	Attempted Rape (35-42-4-1)	0	0	4	0
F3	Attempted Robbery (Armed Or Bodily Injury) (35-42-5-1)	6	0	20	1
F3	Battery (35-42-2-1)	0	0	4	1
F3	Burglary (35-43-2-1)	5	0	9	1
F3	Child Molesting (35-42-4-3)	8	1	39	3
F3	Child Seduction (35-42-4-7)	0	0	1	0
F3	Conspiracy Dealing A Sched I, Ii, Iii Control Subst (35-48-4-2)	1	0	1	0
F3	Conspiracy Dealing In Methamphetamine (35-48-4-1.1)	0	0	2	0
F3	Conspiracy Robbery (Armed Or Bodily Injury) (35-42-5-1)	0	1	3	2
F3	Criminal Confinement (35-42-3-3)	12	0	53	4
F3	Deal Controlled Substance Result Death (35-42-1-1.5)	0	0	0	1
F3	Dealing A Sched I, Ii, Iii Control Subst (35-48-4-2)	2	0	8	0
F3	Dealing In Cocaine Or Narcotic Drug (35-48-4-1)	19	2	59	6
F3	Dealing In Methamphetamine (35-48-4-1.1)	27	9	128	30
F3	Dealing In Sched Iv Controlled Substance (35-48-4-3)	1	0	4	1
F3	Fail To Stop After Acc - Ser Body Injury (9-26-1-1.1)	3	0	8	1
F3	Habitual Offender (35-50-2-8)	0	0	1	1
F3	Kidnapping (35-42-3-2)	0	0	7	0
F3	Manufacturing Methamphetamine (35-48-4-1.2)	0	0	1	0
F3	Neglect Of A Dependent W/ Serious Injury (35-46-1-4)	2	2	18	9
F3	Possession Of Cocaine Or Narcotic Drug (35-48-4-6)	7	0	15	0
F3	Possession Of Methamphetamine (35-48-4-6.1)	9	6	56	22
F3	Promote Child Sex Trafficking (35-42-3.5-1.2)	1	0	1	0
F3	Rape (35-42-4-1)	6	0	37	0
F3	Resisting Law Enforcement (35-44.1-3-1)	0	0	1	0
F3	Robbery (Armed Or Bodily Injury) (35-42-5-1)	42	3	218	14
F4	Aiding Arson (35-43-1-1)	0	0	1	0
F4	Aiding Burglary (35-43-2-1)	0	0	2	1
F4	Aiding Dealing In Methamphetamine (35-48-4-1.1)	0	0	2	0
F4	Arson (35-43-1-1)	3	0	22	2

F4	Attempted Arson (35-43-1-1)	0	0	2	0
F4	Attempted Burglary (35-43-2-1)	1	0	3	0
F4	Attempted Child Solicitation (35-42-4-6)	1	0	1	0
F4	Attempted Dealing In Methamphetamine (35-48-4-1.1)	0	0	1	0
F4	Attempted Escape (35-44.1-3-4)	0	0	1	0
F4	Attempted Sexual Misconduct With A Minor (35-42-4-9)	1	0	4	0
F4	Burglary (35-43-2-1)	37	12	200	34
F4	Child Exploitation (35-42-4-4)	5	0	26	0
F4	Child Molesting (35-42-4-3)	30	1	146	2
F4	Child Solicitation (35-42-4-6)	6	0	24	0
F4	Conspiracy Burglary (35-43-2-1)	1	0	1	0
F4	Conspiracy Dealing In Cocaine Or Narcotic Drug (35-48-4-1)	1	0	4	0
F4	Conspiracy Dealing In Methamphetamine (35-48-4-1.1)	1	1	2	2
F4	Conspiracy Manufacturing Methamphetamine (35-48-4-1.2)	0	0	0	1
F4	Criminal Confinement (35-42-3-3)	3	0	9	0
F4	Dealing A Sched I, Ii, Iii Control Subst (35-48-4-2)	0	0	6	0
F4	Dealing In Cocaine Or Narcotic Drug (35-48-4-1)	13	5	66	10
F4	Dealing In Methamphetamine (35-48-4-1.1)	15	10	94	29
F4	Dealing In Sched Iv Controlled Substance (35-48-4-3)	2	0	4	1
F4	Escape (35-44.1-3-4)	2	1	4	2
F4	Habitual Offender (35-50-2-8)	0	0	2	1
F4	Illegal Poss Firearm By A Felon (35-47-4-4)	0	0	1	1
F4	Incest - Victim Less Than 16 Years Old (35-46-1-3)	1	0	7	0
F4	Kidnapping (35-42-3-2)	0	0	1	0
F4	Leaving Accident Scene - Ser Bodily Inj (9-26-1-1.1)	3	2	13	4
F4	Manufacturing Methamphetamine (35-48-4-1.2)	1	0	2	0
F4	Omvwi - Cause Catastrophic Injury (9-30-5-5(A3))	0	0	0	1
F4	Oper Veh - Intox - Result - Death (9-30-5-5)	3	0	20	7
F4	Oper Veh - Intox - Result - Ser Body Inj (9-30-5-4)	4	1	10	1
F4	Owi- Death/Injury - W/ Ctrl Sub Schd 1,2 (9-30-5-5(A2))	1	0	5	0
F4	Possession Of Cocaine Or Narcotic Drug (35-48-4-6)	6	0	46	6
F4	Possession Of Dangerous Device (35-44.1-3-7)	0	0	2	0
F4	Possession Of Methamphetamine (35-48-4-6.1)	20	6	131	32
F4	Sex Batt By Threat Or Using Deadly Force (35-42-4-8)	0	0	3	0
F4	Sexual Misconduct With A Minor (35-42-4-9)	11	0	54	3
F4	Stalking (35-45-10-5)	2	0	2	0

F4	Unlawful Firearm Poss By Serious Felon (35-47-4-5)	74	3	398	8
F4	Vicarious Sexual Gratification (35-42-4-5)	1	0	2	0
F5	Aiding Battery (35-42-2-1)	0	0	1	0
F5	Aiding Burglary (35-43-2-1)	1	0	6	0
F5	Aiding Dealing In Methamphetamine (35-48-4-1.1)	1	0	2	0
F5	Aiding Escape (35-44.1-3-4)	0	0	0	1
F5	Aiding Obstruction Of Justice (35-44.1-2-2)	0	0	1	0
F5	Aiding Robbery (35-42-5-1)	0	0	2	0
F5	Aiding Trafficking With An Inmate (35-44.1-3-5)	0	0	1	0
F5	Alteration Of Firearm'S Identifying Marks (35-47-2-18)	4	0	14	1
F5	Assisting A Criminal (35-44.1-2-5)	0	0	7	2
F5	Attempted Auto Theft, Receiving Stolen Auto Parts (35-43-4-2.5)	0	0	1	0
F5	Attempted Battery (35-42-2-1)	0	0	6	2
F5	Attempted Burglary (35-43-2-1)	1	0	4	0
F5	Attempted Child Exploitation (35-42-4-4)	2	0	2	0
F5	Attempted Child Seduction (35-42-4-7)	0	0	1	0
F5	Attempted Criminal Recklessness (35-42-2-2)	0	0	1	0
F5	Attempted Dealing In Methamphetamine (35-48-4-1.1)	0	0	1	0
F5	Attempted Disarming A Law Enforcement Officer (35-44.1-3-2)	0	0	2	1
F5	Attempted Domestic Battery With Prev Battery Conv (35-42-2-1.3)	0	0	1	0
F5	Attempted Escape (35-44.1-3-4)	0	1	1	1
F5	Attempted Fraud (35-43-5-4)	0	0	1	0
F5	Attempted Fraud On A Financial Institution (35-43-5-8)	0	0	1	0
F5	Attempted Intimidation (35-45-2-1)	0	0	1	0
F5	Attempted Kidnapping (35-42-3-2)	0	0	2	0
F5	Attempted Obstruction Of Justice (35-44.1-2-2)	0	0	3	0
F5	Attempted Robbery (35-42-5-1)	1	0	11	1
F5	Auto Theft, Receiving Stolen Auto Parts (35-43-4-2.5)	12	0	60	2
F5	Battery (35-42-2-1)	54	4	268	27
F5	Battery W/Bodily Injury To A Public Safety Officer (35-42-2-1C1)	3	0	4	0
F5	Bribery (35-44.1-1-2)	1	0	2	0
F5	Burglary (35-43-2-1)	45	5	219	22
F5	Child Exploitation (35-42-4-4)	6	2	15	4
F5	Child Seduction (35-42-4-7)	1	0	3	0
F5	Child Solicitation (35-42-4-6)	14	0	42	1
F5	Conspiracy Burglary (35-43-2-1)	0	0	1	0
F5	Conspiracy Dealing In Cocaine Or Narcotic Drug (35-48-4-1)	0	0	1	0
F5	Conspiracy Dealing In Methamphetamine (35-48-4-1.1)	0	0	4	0

F5	Conspiracy Fraud On A Financial Institution (35-43-5-8)	0	0	0	1
F5	Conspiracy Robbery (35-42-5-1)	0	0	2	0
F5	Conspiracy Trafficking With An Inmate (35-44.1-3-5)	0	0	2	0
F5	Conversion (35-43-4-3)	2	0	3	1
F5	Corrupt Business Influence (35-45-6-2)	1	0	19	3
F5	Criminal Confinement (35-42-3-3)	5	0	59	2
F5	Criminal Recklessness (35-42-2-2)	13	0	62	5
F5	Danger Poss Firearm Child Prev Conv/Adj (35-47-10-5)	0	0	5	0
F5	Dealing A Sched I, Ii, Iii Control Subst (35-48-4-2)	1	0	11	3
F5	Dealing In Cocaine Or Narcotic Drug (35-48-4-1)	6	2	48	13
F5	Dealing In Marijuana, Hash Oil, Hashish (35-48-4-10)	0	0	14	1
F5	Dealing In Methamphetamine (35-48-4-1.1)	15	6	66	18
F5	Dealing In Sched Iv Controlled Substance (35-48-4-3)	0	0	2	0
F5	Dealing Possessing Look-Alike Substance (35-48-4-4.6)	0	0	2	0
F5	Disarming A Law Enforcement Officer (35-44.1-3-2)	3	1	13	1
F5	Domestic Battery Resulting In Sbi (35-42-2-1.3A1)	3	0	4	0
F5	Domestic Battery W/ Bodily Injury Pregnant Woman (35-42-2-1.3)	3	0	4	0
F5	Domestic Battery With Prev Battery Conv (35-42-2-1.3)	42	6	222	15
F5	Escape (35-44.1-3-4)	8	1	38	7
F5	Fail To Stop After Acc - Result In Death (9-26-1-1.1)	0	0	1	0
F5	Failure To Register As A Sex Offender (11-8-8-17)	28	1	112	2
F5	Fraud (35-43-5-4)	2	1	5	3
F5	Fraud On A Financial Institution (35-43-5-8)	2	1	20	6
F5	Habitual Offender (35-50-2-8)	2	0	6	0
F5	Handgun Violation (Felony Within 15 Yrs) (35-47-2-1)	58	5	219	13
F5	Home Improvement Fraud Offenses (35-43-6-12)	0	0	1	0
F5	Identity Deception (35-43-5-3.5)	0	0	0	1
F5	Incest (35-46-1-3)	0	0	3	0
F5	Inmate Fraud (35-43-5-20)	0	0	0	1
F5	Interference With Medical Services (35-45-21-5)	0	1	0	1
F5	Intimidation (35-45-2-1)	28	3	130	7
F5	Kidnapping (35-42-3-2)	1	0	7	0
F5	Minor Passenger In Veh - Prev Conviction (9-30-5-3)	0	0	0	1
F5	Neglect Of A Dependent (35-46-1-4)	2	1	15	15
F5	Non Support Dep Child - Prev Conviction (35-46-1-5)	1	0	10	1

F5	Obstruction Of Justice (35-44.1-2-2)	3	0	13	1
F5	Op Veh/Habitual Traf Viol Cause Inj/Dth (9-30-10-17A2)	1	0	1	0
F5	Oper Veh - Intox - Prior Conviction (9-30-5-2)	1	0	2	0
F5	Oper Veh - Intox - Result - Death (9-30-5-5)	1	0	2	0
F5	Oper Veh - Intox - Result - Ser Body Inj (9-30-5-4)	3	1	21	6
F5	Oper Veh - Ser Bodily Injury W/Schd I,II (9-30-5-4(A2))	3	0	7	0
F5	Operate Vehicle After Suspended For Life (9-30-10-17)	16	2	112	10
F5	Possess Chemical Reagents Or Precursors (35-48-4-14.5)	0	0	1	0
F5	Possess Child Porn W/ Aggravating Factor (35-42-4-4(D))	4	0	10	0
F5	Possession Dangerous Device (35-44.1-3-7)	0	1	5	1
F5	Possession Of A Destructive Device (35-47.5-5-2)	0	0	1	0
F5	Possession Of A Machine Gun Or Bomb (35-47-5-8)	3	0	9	0
F5	Possession Of Child Pornography (35-42-4-4(C))	5	0	27	0
F5	Possession Of Cocaine Or Narcotic Drug (35-48-4-6)	21	8	91	21
F5	Possession Of Methamphetamine (35-48-4-6.1)	60	17	267	63
F5	Possession Of Syringes Or Needles (16-42-19-18)	0	0	1	1
F5	Promoting Prostitution (35-45-4-4)	0	0	3	1
F5	Providing Firearm To Ineligible Person (35-47-2.5-16)	0	0	0	1
F5	Reckless Homicide (35-42-1-5)	4	0	24	2
F5	Resisting Law Enforcement (35-44.1-3-1)	5	0	39	1
F5	Robbery (35-42-5-1)	26	3	95	10
F5	Sexual Misconduct W/ Service Provider (35-44.1-3-10)	0	0	0	1
F5	Sexual Misconduct With A Minor (35-42-4-9)	10	0	49	2
F5	Stalking (35-45-10-5)	5	0	21	0
F5	Strangulation (35-42-2-9)	3	0	14	0
F5	Theft,Receiving Stolen Property (35-43-4-2)	11	3	32	9
F5	Trafficking With An Inmate (35-44.1-3-5)	1	2	17	8
F5	Unlawful Firearm Poss By Serious Felon (35-47-4-5)	1	0	51	4
F5	Vicarious Sexual Gratification (35-42-4-5)	1	0	3	0
F5	Violate Condition Lifetime Parole W/Minr (35-44.1-3-9)	0	0	1	0
F6	Aiding Assisting A Criminal (35-44.1-2-5)	0	0	1	0
F6	Aiding Auto Theft, Receiving Stolen Auto Parts (35-43-4-2.5)	0	0	1	0
F6	Aiding Dealing In Marijuana, Hash Oil, Hashish (35-48-4-10)	0	0	1	0
F6	Aiding Impersonating A Public Servant (35-44.1-2-6)	1	0	1	0
F6	Aiding In Manufacture Of Sch Ii Cont Sub (35-48-4-2)	1	0	3	0

F6	Aiding Resisting Law Enforcement (35-44.1-3-1)	0	0	1	0
F6	Aiding Theft,Receiving Stolen Property (35-43-4-2)	1	0	1	0
F6	Aiding Violation Of Custody Order (35-42-3-4)	0	0	1	0
F6	Arson - Pecuniary Loss Gt \$250 Lt \$5,000 (35-43-1-1)	0	0	3	0
F6	Assisting A Criminal (35-44.1-2-5)	0	0	0	1
F6	Attempted Auto Theft, Receiving Stolen Auto Parts (35-43-4-2.5)	0	0	2	0
F6	Attempted Battery (35-42-2-1)	0	0	1	0
F6	Attempted Escape (35-44.1-3-4)	0	0	1	0
F6	Attempted Forgery,Counterfeiting,Application Fraud (35-43-5-2)	1	0	1	0
F6	Attempted Invasion Of Privacy (35-46-1-15.1)	0	0	1	0
F6	Attempted Obstruction Of Justice (35-44.1-2-2)	2	0	4	0
F6	Attempted Residential Entry (35-43-2-1.5)	0	0	2	0
F6	Attempted Sexual Battery (35-42-4-8)	1	0	1	0
F6	Attempted Theft,Receiving Stolen Property (35-43-4-2)	1	0	4	0
F6	Auto Theft, Receiving Stolen Auto Parts (35-43-4-2.5)	15	1	85	9
F6	Auto Theft-Theft Of Entire Motor Vehicle (35-43-4-2(a))	11	1	21	2
F6	Battery (35-42-2-1)	21	2	123	16
F6	Bestiality, Knowingly Perform Act (35-46-3-14)	0	0	2	0
F6	Check Deception (35-43-5-5)	0	0	0	1
F6	Check Fraud (35-43-5-12)	0	0	1	0
F6	Child Exploitation (35-42-4-4)	1	0	4	0
F6	Child Seduction (35-42-4-7)	0	0	1	0
F6	Conspiracy Dealing A Sched I, Ii, Iii Control Subst (35-48-4-2A-1)	0	0	1	0
F6	Conspiracy Theft,Receiving Stolen Property (35-43-4-2)	0	0	2	0
F6	Contributing To The Delinquency Of Minor (35-46-1-8)	0	0	1	0
F6	Criminal Confinement (35-42-3-3)	7	0	31	1
F6	Criminal Recklessness (35-42-2-2)	6	1	50	2
F6	Criminal Trespass (35-43-2-2)	3	0	9	1
F6	Cruelty To Animals,Delib Kill W/O Consen (35-46-3-12)	0	0	6	0
F6	Danger Comm Dis Carrier Int Fail To Warn (35-45-21-3)	0	0	1	0
F6	Deal Sub Represented To Be Controled Sub (35-48-4-4.6)	0	2	0	2
F6	Dealing A Sched I, Ii, Iii Control Subst (35-48-4-2(A))	0	0	2	2
F6	Dealing In A Counterfeit Substance (35-48-4-5)	0	0	2	0
F6	Dealing In Marijuana, Hash Oil, Hashish (35-48-4-10)	3	0	19	0
F6	Dealing In Sched Iv Controlled Substance (35-48-4-3)	1	0	1	0

F6	Dealing Look-Alike Or Synthetic Substanc (35-48-4-10.5)	1	0	2	0
F6	Dissemination Of Matter Harmful To Minor (35-49-3-3)	0	0	5	1
F6	Domestic Battery (35-42-2-1.3)	31	1	166	12
F6	Domestic Violence Animal Cruelty (35-46-3-12.5)	0	0	1	0
F6	Escape (35-44.1-3-4)	42	12	204	49
F6	Exploitation Of Endanger Adult 60 & Over (35-46-1-12)	0	1	0	1
F6	Failure Of Sex Offender To Possess Id (11-8-8-15)	2	0	6	0
F6	Failure To Appear (35-44.1-2-9)	1	1	12	4
F6	Failure To Register As A Sex Offender (11-8-8-17)	9	0	57	2
F6	False Reporting (35-44.1-2-3)	0	0	1	0
F6	Forgery,Counterfeiting,Application Fraud (35-43-5-2)	7	4	29	7
F6	Fraud (35-43-5-4)	2	3	15	6
F6	Habitual Offender (35-50-2-8)	4	1	15	2
F6	Habitual Substance Offender (35-50-2-10)	0	0	1	0
F6	Habitual Vehicular Subst Offender Enhanc (9-30-15.5-2)	2	0	4	0
F6	Home Improvement Fraud Offenses (35-43-6-12)	0	0	1	0
F6	Identity Deception (35-43-5-3.5)	7	2	18	8
F6	Illegal Sex Offender Residency (35-42-4-11)	0	0	1	0
F6	Impersonating A Public Servant (35-44.1-2-6)	0	1	0	1
F6	Institutional Criminal Mischief (35-43-1-2)	0	0	1	0
F6	Intimidation (35-45-2-1)	31	0	131	3
F6	Invasion Of Privacy (35-46-1-15.1)	9	2	53	4
F6	Kidnapping (35-42-3-2)	0	0	1	0
F6	Killing A Domestic Animal (35-46-3-12D)	0	1	0	1
F6	Knowing, Unlawful Sale Of A Legend Drug (16-42-19-11)	1	2	1	2
F6	Leaving Scene Of An Acc - Ser Bodily Inj (9-26-1-1.1)	1	1	7	1
F6	Maintaining Common Nuisance (35-48-4-13)	2	0	8	1
F6	Maintaining Common Nuisance - Cntrl Subs (35-45-1-5(C))	8	3	26	10
F6	Make False Sales Doc,Upc,Int To Defraud (35-43-5-16)	0	0	2	0
F6	Moving Body From Scene Of Death (36-2-14-17)	0	0	1	0
F6	Neglect Of A Dependent (35-46-1-4)	8	5	25	19
F6	Non-Support Of Dependent Child (35-46-1-5)	4	0	16	1
F6	Obstruction Of Justice (35-44.1-2-2)	7	5	38	14
F6	Official Misconduct (35-44.1-1-1)	0	0	1	0
F6	Oper Veh - Intox - Prior Conviction (9-30-5-2)	15	9	77	20
F6	Oper Veh - Intox - Result - Ser Body Inj (9-30-5-4)	1	0	2	1
F6	Oper Veh - Sch 1 Or 2 Control Substance (9-30-5-1(C))	1	0	2	1

F6	Oper Veh .08 Or More - Prior Conviction (9-30-5-1)	4	3	31	12
F6	Oper Vehicle - Intox - Prev Conviction (9-30-5-3)	5	0	28	4
F6	Operating Vehicle-Habit Traffic Violator (9-30-10-16)	11	1	56	6
F6	Organized Theft (35-43-2-2.1)	0	1	1	1
F6	Perform Sex Conduct In Presence Of Minor (35-42-4-5(C))	0	0	3	0
F6	Perjury (35-44.1-2-1)	0	0	1	0
F6	Pointing A Firearm (35-47-4-3)	4	1	19	2
F6	Poss Hoax Device With Intent To Fool (35-47.5-5-6)	0	0	1	0
F6	Possess Chemical Reagents Or Precursors (35-48-4-14.5)	0	0	2	2
F6	Possess Look-Alike Or Synthetic Substanc (35-48-4-11.5)	0	0	1	0
F6	Possession Of Child Pornography (35-42-4-4(C))	2	0	5	1
F6	Possession Of Child Pornography (35-42-4-4(D))	2	0	4	0
F6	Possession Of Cocaine Or Narcotic Drug (35-48-4-6)	31	17	169	47
F6	Possession Of Controlled Substance (35-48-4-7)	6	0	21	2
F6	Possession Of Marijuana, Hash, Hash Oil (35-48-4-11)	2	1	8	1
F6	Possession Of Methamphetamine (35-48-4-6.1)	93	34	492	142
F6	Possession Of Methamphetamine (35-48-4-6.1A)	7	0	26	13
F6	Possession Of Paraphernalia (35-48-4-8.3)	0	0	1	1
F6	Possession Of Syringes Or Needles (16-42-19-18)	31	16	175	60
F6	Possession Or Use Of Legend Drug (16-42-19-13)	6	3	23	7
F6	Public Indecency With Prior Conviction (35-45-4-1)	2	0	3	0
F6	Residential Entry (35-43-2-1.5)	13	0	59	5
F6	Resisting Law Enforcement (35-44.1-3-1)	59	7	268	23
F6	Sexual Battery (35-42-4-8)	5	0	19	0
F6	Stalking (35-45-10-5)	0	0	7	2
F6	Strangulation (35-42-2-9)	11	0	73	1
F6	Synthetic Identity Deception (35-43-5-3.8)	1	1	3	2
F6	Theft,Motor Vehicle/Component Parts (35-43-4-2A1B)	1	1	1	1
F6	Theft,Receiving Stolen Property (35-43-4-2)	70	20	306	72
F6	Trafficking With An Inmate (35-44.1-3-6)	0	0	1	0
F6	Unlawful Firearm Possession By An Alien (35-47-4-8)	0	0	1	0
F6	Unlawful Poss Firearm/Dangerous Person (35-47-4-9)	0	0	1	0
F6	Violate Condition Lifetime Parole W/Minr (35-44.1-3-9)	0	0	1	0
F6	Voyeurism (35-45-4-5)	0	0	1	0
F6	Welfare Fraud (35-43-5-7)	0	0	1	0
FA	Aiding Attempted Murder (35-42-1-1)	0	0	1	0
FA	Arson (35-43-1-1)	0	0	1	0



FA	Attempted Attempted Murder (35-42-1-1)	2	0	9	0
FA	Attempted Child Molesting (35-42-4-3)	1	0	1	0
FA	Attempted Dealing In Methamphetamine (35-48-4-1.1)	1	0	1	0
FA	Attempted Rape (35-42-4-1)	0	0	1	0
FA	Attempted Robbery (Serious Bodily Injury) (35-42-5-1)	0	0	1	0
FA	Burglary (35-43-2-1)	2	1	5	1
FA	Child Molesting (35-42-4-3)	5	0	44	0
FA	Conspiracy Attempted Murder (35-42-1-1)	0	0	1	0
FA	Conspiracy Dealing In Cocaine Or Narcotic Drug (35-48-4-1)	0	0	1	0
FA	Conspiracy Dealing In Methamphetamine (35-48-4-1.1)	0	0	1	0
FA	Criminal Deviate Conduct (35-42-4-2)	1	0	3	0
FA	Dealing In A Sched I,Ii Or Iii Cont Sub (35-48-4-2)	1	0	4	2
FA	Dealing In Cocaine Or Narcotic Drug (35-48-4-1)	2	0	18	0
FA	Dealing In Methamphetamine (35-48-4-1.1)	1	1	9	2
FA	Rape (35-42-4-1)	3	0	11	0
FA	Robbery (Serious Bodily Injury) (35-42-5-1)	1	0	10	0
FA	Voluntary Manslaughter (35-42-1-3)	1	0	4	0
FB	Aggravated Battery (35-42-2-1.5)	4	0	10	1
FB	Aiding Burglary (35-43-2-1)	0	0	1	0
FB	Aiding Dealing In Cocaine Or Narcotic Drug (35-48-4-1)	0	0	1	0
FB	Aiding Dealing In Methamphetamine (35-48-4-1.1)	0	0	1	0
FB	Aiding Robbery (Armed Or Bodily Injury) (35-42-5-1)	0	0	1	0
FB	Arson (35-43-1-1)	1	0	5	0
FB	Attempted Child Molesting (35-42-4-3)	0	0	4	0
FB	Attempted Criminal Deviate Conduct (35-42-4-2)	0	0	2	0
FB	Attempted Dealing In Cocaine Or Narcotic Drug (35-48-4-1)	0	0	1	0
FB	Attempted Dealing In Methamphetamine (35-48-4-1.1)	0	0	1	0
FB	Attempted Escape (35-44-3-5)	0	0	2	0
FB	Attempted Rape (35-42-4-1)	0	0	2	0
FB	Attempted Robbery (Armed Or Bodily Injury) (35-42-5-1)	1	0	6	0
FB	Attempted Sexual Misconduct With A Minor (35-42-4-9)	0	0	1	0
FB	Battery (35-42-2-1)	1	0	4	0
FB	Burglary (35-43-2-1)	15	1	94	5
FB	Carjacking (35-42-5-2)	0	0	2	0
FB	Child Molesting (35-42-4-3)	6	0	40	0
FB	Conspiracy Dealing In Methamphetamine (35-48-4-1.1)	1	0	1	0

FB	Conspiracy Robbery (Armed Or Bodily Injury) (35-42-5-1)	0	0	3	0
FB	Criminal Confinement (35-42-3-3)	1	0	8	0
FB	Criminal Deviate Conduct (35-42-4-2)	1	0	13	0
FB	Dealing In A Sched I,ii Or Iii Contr Sub (35-48-4-2)	1	0	18	0
FB	Dealing In Cocaine Or Narcotic Drug (35-48-4-1)	4	1	38	7
FB	Dealing In Methamphetamine (35-48-4-1.1)	11	0	52	5
FB	Dealing In Sched Iv Controlled Substance (35-48-4-3)	0	0	1	0
FB	Escape (35-44-3-5)	0	0	2	0
FB	Fail To Stop Aft Acc - Sbi - Oper Intox (9-26-1-1)	0	0	1	0
FB	Habitual Substance Offender (35-50-2-10)	1	0	2	0
FB	Human Sexual Trafficking (35-42-3.5-1)	0	0	1	1
FB	Incest (35-46-1-3)	0	0	4	0
FB	Neglect Of A Dependent (35-46-1-4)	3	0	6	0
FB	Possession Controlled Substance (35-48-4-7)	0	0	1	0
FB	Possession Of Cocaine Or Narcotic Drug (35-48-4-6)	0	0	2	0
FB	Possession Of Methamphetamine (35-48-4-6.1)	0	0	6	1
FB	Prisoner Poss. Dangerous Device/Material (35-44-3-9.5)	0	0	1	0
FB	Rape (35-42-4-1)	3	0	24	0
FB	Robbery (Armed Or Bodily Injury) (35-42-5-1)	10	1	67	2
FB	Sexual Misconduct With A Minor (35-42-4-9)	5	0	16	0
FB	Unlawful Firearm Poss By Serious Felon (35-47-4-5)	4	0	13	0
FB	Voluntary Manslaughter (35-42-1-3)	0	0	5	0
FC	Accident - Fail To Stop - Death (9-26-1-8)	0	0	1	0
FC	Aiding Battery (35-42-2-1)	0	0	1	0
FC	Aiding Bribery (35-44-1-1)	0	0	1	0
FC	Assisting A Criminal (35-44-3-2)	0	0	1	0
FC	Attempted Burglary (35-43-2-1)	0	0	2	0
FC	Attempted Criminal Confinement (35-42-3-3)	0	0	1	0
FC	Attempted Escape (35-44-3-5)	0	0	1	0
FC	Auto Theft, Receiving Stolen Auto Parts (35-43-4-2.5)	0	0	5	0
FC	Battery (35-42-2-1)	3	0	24	1
FC	Burglary (35-43-2-1)	7	0	34	0
FC	Carrying Handgun W/O License (35-47-22/23)	0	0	2	0
FC	Child Exploitation (35-42-4-4)	0	0	1	0
FC	Child Molesting (35-42-4-3)	6	0	39	0
FC	Child Solicitation (35-42-4-6)	0	0	2	0
FC	Corrupt Business Influence (35-45-6-2)	0	0	2	0
FC	Criminal Confinement (35-42-3-3)	0	0	7	0
FC	Criminal Recklessness (35-42-2-2)	0	0	2	0
FC	Dealing In Sched Iv Controlled Substan (35-48-4-3)	1	0	2	1

FC	Dealing/Possessing Look-Alike Substance (35-48-4-4.6)	1	0	1	0
FC	Escape (35-44-3-5)	1	0	5	0
FC	Failure To Register As A Sex Offender (11-8-8-17)	1	0	3	0
FC	Forgery,Counterfeiting,Application Fraud (35-43-5-2)	0	0	12	4
FC	Fraud On A Financial Institution (35-43-5-8)	0	0	1	0
FC	Handgun Violation (Felony Within 15 Yrs) (35-47-2-23)	0	0	1	0
FC	Incest (35-46-1-3)	1	0	2	0
FC	Intimidation (35-45-2-1)	0	0	2	0
FC	Neglect Of A Dependent (35-46-1-4)	1	0	2	0
FC	Non Support Of Dependent Child (35-46-1-5)	2	0	16	0
FC	Operate Vehicle After Suspended For Life (9-30-10-17)	2	0	7	0
FC	Operating Vehicle-Habit Traffic Violator (9-30-10-16)	0	0	1	0
FC	Possess Chemical Reagents Or Precursors (35-48-4-14.5(e))	0	0	1	0
FC	Possession O A Controlled Substance (35-48-4-7)	1	0	3	0
FC	Possession Of A Sawed-Off Shotgun (35-47-5-4.1)	0	0	0	1
FC	Possession Of Cocaine Or Narcotic Drug (35-48-4-6)	0	0	4	1
FC	Possession Of Methamphetamine (35-48-4-6.1)	0	0	2	0
FC	Robbery (35-42-5-1)	0	0	13	0
FC	Sale,Possession,Use Legend Drug W/Prior (16-42-19-27)	0	0	0	1
FC	Sexual Battery (35-42-4-8)	0	0	2	0
FC	Sexual Misconduct With A Minor (35-42-4-9)	2	0	8	0
FC	Stalking (35-45-10-5)	1	0	2	0
FC	Trafficking With An Inmate (35-44-3-9)	0	0	2	0
FD	Arson (35-43-1-1)	0	0	1	0
FD	Attempted Residential Entry (35-43-2-1.5)	0	0	1	0
FD	Auto Theft, Receiving Stolen Auto Parts (35-43-4-2.5)	3	0	11	0
FD	Battery (35-42-2-1)	0	0	5	0
FD	Child Exploitation (35-42-4-4)	0	0	1	0
FD	Child Molesting (35-42-4-3)	0	0	1	0
FD	Child Solicitation (35-42-4-6)	0	0	2	0
FD	Criminal Confinement (35-42-3-3)	1	0	7	0
FD	Criminal Gang Activity (35-45-9-3)	0	0	1	0
FD	Criminal Recklessness (35-42-2-2)	2	0	4	0
FD	Dealing In A Conterfeit Substance (35-48-4-5)	0	0	1	0
FD	Dealing In Marijuana,Hash Oil Or Hashish (35-48-4-10)	0	0	1	0
FD	Dissemination Of Matter Harmful To Minor (35-49-3-3)	0	0	2	0
FD	Domestic Battery (35-42-2-1.3)	0	0	1	0

FD	Dumping Controlled Substance Waste (35-48-4-4.1)	0	0	0	1
FD	Failure Of Sex Offender To Possess Id (11-8-8-15)	0	0	1	0
FD	Failure To Appear (35-44-3-6)	0	0	1	0
FD	Failure To Register As A Sex Offender (5-2-12-9)	0	0	1	0
FD	Failure To Return Lawful Det/Escape (35-44-3-5)	1	0	4	0
FD	Forgery,Counterfeiting,Application Fraud (35-43-5-2)	0	0	1	0
FD	Fraud (35-43-5-4)	0	0	1	1
FD	Habitual Offender (35-50-2-8)	1	0	1	0
FD	Handgun Violation (35-47-2-1)	0	0	1	0
FD	Identity Deception (35-43-5-3.5)	0	0	0	1
FD	Illegal Sex Offender Residency (35-42-4-11)	0	0	2	0
FD	Impersonation Of A Public Servant (35-44-2-3)	0	0	1	0
FD	Intimidation (35-45-2-1)	2	0	9	0
FD	Maintaining Common Nuisance (35-48-4-13)	2	0	3	2
FD	Mischief (35-43-1-2)	0	0	1	0
FD	Neglect Of A Dependent (35-46-1-4)	0	0	3	0
FD	Non-Support Of Child (35-46-1-5)	6	0	11	1
FD	Obstruction Of Justice (35-44-3-4)	0	0	1	1
FD	Oper Veh W/Intoxicatd Endangering Person (9-30-5-2)	0	0	1	0
FD	Oper Vehicle While Intox-Prev Conviction (9-30-5-3)	0	0	3	2
FD	Operating Vehicle-Habit Traffic Violator (9-30-10-16)	0	0	3	0
FD	Possession Of A Controlled Substance (35-48-4-7)	4	0	8	2
FD	Possession Of Child Pornography (35-42-4-4(C))	0	0	2	0
FD	Possession Of Cocaine Or A Narcotic Drug (35-48-4-6)	2	0	5	1
FD	Possession Of Marijuana, Hash, Hash Oil (35-48-4-11)	0	0	1	0
FD	Possession Of Methamphetamine (35-48-4-6.1)	1	0	6	2
FD	Possession Of Precursors (35-48-4-14.5)	3	0	6	0
FD	Possession Of Syringes Or Needles (16-42-19-18)	0	0	1	0
FD	Public Indecency (35-45-4-1)	0	0	3	0
FD	Residential Entry (35-43-2-1.5)	0	0	3	0
FD	Resisting Law Enforcement (35-44-3-3)	1	0	12	0
FD	Sexual Battery (35-42-4-8)	1	0	7	0
FD	Strangulation (35-42-2-9)	0	0	2	0
FD	Theft,Receiving Stolen Property (35-43-4-2)	6	1	35	3
FD	Vicarious Sexual Gratification (35-42-4-5)	0	0	2	0
FD	Voyeurism (35-45-4-5)	0	0	1	0
HO	Criminal Gang Enhancement (35-50-2-15)	0	0	1	0
HO	Firearm Enhancement (35-50-2-11)	0	0	1	0
HO	Habitual Offender (35-50-2-8)	0	0	7	1

HO	Repeat Sexual Offender Enhancement (35-50-2-14)	0	0	1	0
M	Aiding Murder (35-42-1-1)	1	1	1	1
M	Murder (35-42-1-1)	8	1	100	7
Total		1874	334	9538	1317

## Number of New Admissions by Most Serious Offense Committed to the Indiana Department of Correction

Table 29: Number of Admissions by Most Serious Offense Committed to the Indiana Department of Correction

Offense Level	Primary Offense	Male	Female	YTD Male	YTD Female
F1	Aggravated Battery (35-42-2-1.5)	0	0	1	0
F1	Aiding Deal Controlled Substance Result Death (35-42-1-1.5)	0	0	2	0
F1	Aiding Rape (35-42-4-1)	0	0	0	1
F1	Attempted Attempted Murder (35-42-1-1(1))	0	0	1	0
F1	Attempted Murder (35-42-1-1(1))	3	1	10	1
F1	Attempted Murder (35-42-1-1)	0	0	6	1
F1	Burglary (35-43-2-1)	1	0	4	0
F1	Child Molesting (35-42-4-3)	10	1	73	1
F1	Deal Controlled Substance Result Death (35-42-1-1.5)	0	0	2	0
F1	Murder (35-42-1-1)	1	0	8	1
F1	Neglect Of Dependent Resulting In Death (35-46-1-4)	1	1	5	5
F1	Rape (35-42-4-1)	1	0	6	0
F2	Aiding Voluntary Manslaughter (35-42-1-3)	0	0	1	0
F2	Attempted Burglary (35-43-2-1)	0	0	2	0
F2	Attempted Robbery (Serious Bodily Injury) (35-42-5-1)	0	0	6	1
F2	Burglary (35-43-2-1)	4	0	18	1
F2	Conspiracy Burglary (35-43-2-1)	0	0	1	0
F2	Conspiracy Dealing In Cocaine Or Narcotic Drug (35-48-4-1)	0	0	4	0
F2	Conspiracy Dealing In Methamphetamine (35-48-4-1.1)	1	0	8	0
F2	Conspiracy Murder (35-42-1-1)	0	0	0	1
F2	Conspiracy Robbery (Serious Bodily Injury) (35-42-5-1)	0	0	1	0
F2	Criminal Confinement (35-42-3-3)	0	0	1	0
F2	Dealing A Sched I, Ii, Iii Control Subst (35-48-4-2)	2	2	10	3
F2	Dealing In Cocaine Or Narcotic Drug (35-48-4-1)	10	0	60	4
F2	Dealing In Methamphetamine (35-48-4-1.1)	24	8	131	30
F2	Habitual Offender (35-50-2-8)	1	0	1	0
F2	Manufacturing Meth At Least 10 Grams (35-48-4-1.2)	0	0	1	0
F2	Robbery (Serious Bodily Injury) (35-42-5-1)	2	0	12	1
F2	Voluntary Manslaughter (35-42-1-3)	4	0	28	2
F3	Aggravated Battery (35-42-2-1.5)	15	2	82	6
F3	Aiding Aggravated Battery (35-42-2-1.5)	1	0	2	1
F3	Aiding Dealing In Methamphetamine (35-48-4-1.1)	0	0	0	1
F3	Aiding Robbery (Armed Or Bodily Injury) (35-42-5-1)	3	0	9	0

F3	Arson (35-43-1-1)	1	0	1	0
F3	Attempted Aggravated Battery (35-42-2-1.5)	2	0	8	2
F3	Attempted Human Sexual Trafficking (35-42-3.5-1)	0	0	1	0
F3	Attempted Rape (35-42-4-1)	0	0	3	0
F3	Attempted Robbery (Armed Or Bodily Injury) (35-42-5-1)	4	0	14	1
F3	Battery (35-42-2-1)	0	0	4	1
F3	Burglary (35-43-2-1)	4	0	9	1
F3	Child Molesting (35-42-4-3)	4	1	38	3
F3	Child Seduction (35-42-4-7)	0	0	1	0
F3	Conspiracy Dealing A Sched I, Ii, Iii Control Subst (35-48-4-2)	0	0	1	0
F3	Conspiracy Dealing In Methamphetamine (35-48-4-1.1)	0	0	2	0
F3	Conspiracy Robbery (Armed Or Bodily Injury) (35-42-5-1)	0	1	2	2
F3	Criminal Confinement (35-42-3-3)	6	0	37	3
F3	Deal Controlled Substance Result Death (35-42-1-1.5)	0	0	0	1
F3	Dealing A Sched I, Ii, Iii Control Subst (35-48-4-2)	2	0	7	0
F3	Dealing In Cocaine Or Narcotic Drug (35-48-4-1)	15	2	53	6
F3	Dealing In Methamphetamine (35-48-4-1.1)	22	9	115	28
F3	Dealing In Sched Iv Controlled Substance (35-48-4-3)	1	0	4	1
F3	Fail To Stop After Acc - Ser Body Injury (9-26-1-1.1)	3	0	8	1
F3	Kidnapping (35-42-3-2)	0	0	5	0
F3	Manufacturing Methamphetamine (35-48-4-1.2)	0	0	1	0
F3	Neglect Of A Dependent W/ Serious Injury (35-46-1-4)	2	2	18	8
F3	Possession Of Cocaine Or Narcotic Drug (35-48-4-6)	4	0	12	0
F3	Possession Of Methamphetamine (35-48-4-6.1)	7	6	51	21
F3	Rape (35-42-4-1)	5	0	31	0
F3	Resisting Law Enforcement (35-44.1-3-1)	0	0	1	0
F3	Robbery (Armed Or Bodily Injury) (35-42-5-1)	34	2	206	13
F4	Aiding Arson (35-43-1-1)	0	0	1	0
F4	Aiding Burglary (35-43-2-1)	0	0	2	1
F4	Aiding Dealing In Methamphetamine (35-48-4-1.1)	0	0	1	0
F4	Arson (35-43-1-1)	3	0	22	2
F4	Attempted Arson (35-43-1-1)	0	0	1	0
F4	Attempted Burglary (35-43-2-1)	1	0	1	0
F4	Attempted Child Solicitation (35-42-4-6)	0	0	1	0
F4	Attempted Dealing In Methamphetamine (35-48-4-1.1)	0	0	1	0
F4	Attempted Escape (35-44.1-3-4)	0	0	1	0
F4	Attempted Sexual Misconduct With A Minor (35-42-4-9)	1	0	4	0

F4	Burglary (35-43-2-1)	25	10	174	33
F4	Child Exploitation (35-42-4-4)	2	0	24	0
F4	Child Molesting (35-42-4-3)	25	0	116	0
F4	Child Solicitation (35-42-4-6)	4	0	22	0
F4	Conspiracy Dealing In Cocaine Or Narcotic Drug (35-48-4-1)	0	0	2	0
F4	Conspiracy Dealing In Methamphetamine (35-48-4-1.1)	0	0	1	2
F4	Conspiracy Manufacturing Methamphetamine (35-48-4-1.2)	0	0	0	1
F4	Criminal Confinement (35-42-3-3)	2	0	9	0
F4	Dealing A Sched I, Ii, Iii Control Subst (35-48-4-2)	0	0	5	0
F4	Dealing In Cocaine Or Narcotic Drug (35-48-4-1)	7	5	49	10
F4	Dealing In Methamphetamine (35-48-4-1.1)	8	7	79	25
F4	Dealing In Sched Iv Controlled Substance (35-48-4-3)	0	0	3	1
F4	Escape (35-44.1-3-4)	1	1	3	2
F4	Incest - Victim Less Than 16 Years Old (35-46-1-3)	1	0	4	0
F4	Kidnapping (35-42-3-2)	0	0	1	0
F4	Leaving Accident Scene - Ser Bodily Inj (9-26-1-1.1)	3	2	13	4
F4	Manufacturing Methamphetamine (35-48-4-1.2)	1	0	2	0
F4	Omvwi - Cause Catastrophic Injury (9-30-5-5(A3))	0	0	0	1
F4	Oper Veh - Intox - Result - Death (9-30-5-5)	2	0	19	7
F4	Oper Veh - Intox - Result - Ser Body Inj (9-30-5-4)	2	0	9	1
F4	Owi- Death/Injury - W/ Ctrl Sub Sched 1,2 (9-30-5-5(A2))	1	0	5	0
F4	Possession Of Cocaine Or Narcotic Drug (35-48-4-6)	3	0	40	6
F4	Possession Of Dangerous Device (35-44.1-3-7)	0	0	2	0
F4	Possession Of Methamphetamine (35-48-4-6.1)	14	6	112	30
F4	Sex Batt By Threat Or Using Deadly Force (35-42-4-8)	0	0	1	0
F4	Sexual Misconduct With A Minor (35-42-4-9)	8	0	48	3
F4	Stalking (35-45-10-5)	1	0	2	0
F4	Unlawful Firearm Poss By Serious Felon (35-47-4-5)	45	3	281	5
F4	Vicarious Sexual Gratification (35-42-4-5)	1	0	2	0
F5	Aiding Battery (35-42-2-1)	0	0	1	0
F5	Aiding Burglary (35-43-2-1)	0	0	6	0
F5	Aiding Escape (35-44.1-3-4)	0	0	0	1
F5	Aiding Obstruction Of Justice (35-44.1-2-2)	0	0	1	0
F5	Aiding Robbery (35-42-5-1)	0	0	2	0
F5	Aiding Trafficking With An Inmate (35-44.1-3-5)	0	0	1	0
F5	Alteration Of Firearm'S Identifying Marks (35-47-2-18)	3	0	8	0



F5	Assisting A Criminal (35-44.1-2-5)	0	0	6	2
F5	Attempted Auto Theft, Receiving Stolen Auto Parts (35-43-4-2.5)	0	0	1	0
F5	Attempted Battery (35-42-2-1)	0	0	2	1
F5	Attempted Burglary (35-43-2-1)	1	0	4	0
F5	Attempted Child Exploitation (35-42-4-4)	2	0	2	0
F5	Attempted Child Seduction (35-42-4-7)	0	0	1	0
F5	Attempted Criminal Recklessness (35-42-2-2)	0	0	1	0
F5	Attempted Disarming A Law Enforcement Officer (35-44.1-3-2)	0	0	2	1
F5	Attempted Domestic Battery With Prev Battery Conv (35-42-2-1.3)	0	0	1	0
F5	Attempted Escape (35-44.1-3-4)	0	1	1	1
F5	Attempted Fraud (35-43-5-4)	0	0	1	0
F5	Attempted Kidnapping (35-42-3-2)	0	0	1	0
F5	Attempted Obstruction Of Justice (35-44.1-2-2)	0	0	3	0
F5	Attempted Robbery (35-42-5-1)	1	0	10	1
F5	Auto Theft, Receiving Stolen Auto Parts (35-43-4-2.5)	10	0	54	1
F5	Battery (35-42-2-1)	34	4	197	24
F5	Battery W/Bodily Injury To A Public Safety Officer (35-42-2-1C1)	0	0	2	0
F5	Bribery (35-44.1-1-2)	1	0	1	0
F5	Burglary (35-43-2-1)	32	4	185	20
F5	Child Exploitation (35-42-4-4)	4	1	8	3
F5	Child Seduction (35-42-4-7)	1	0	2	0
F5	Child Solicitation (35-42-4-6)	8	0	35	1
F5	Conspiracy Burglary (35-43-2-1)	0	0	1	0
F5	Conspiracy Dealing In Methamphetamine (35-48-4-1.1)	0	0	1	0
F5	Conspiracy Fraud On A Financial Institution (35-43-5-8)	0	0	0	1
F5	Conspiracy Robbery (35-42-5-1)	0	0	1	0
F5	Conspiracy Trafficking With An Inmate (35-44.1-3-5)	0	0	2	0
F5	Conversion (35-43-4-3)	0	0	2	1
F5	Corrupt Business Influence (35-45-6-2)	1	0	15	2
F5	Criminal Confinement (35-42-3-3)	1	0	43	1
F5	Criminal Recklessness (35-42-2-2)	6	0	37	4
F5	Danger Poss Firearm Child Prev Conv/Adj (35-47-10-5)	0	0	4	0
F5	Dealing A Sched I, Ii, Iii Control Subst (35-48-4-2)	1	0	6	2
F5	Dealing In Cocaine Or Narcotic Drug (35-48-4-1)	2	2	26	9
F5	Dealing In Marijuana, Hash Oil, Hashish (35-48-4-10)	0	0	10	1
F5	Dealing In Methamphetamine (35-48-4-1.1)	11	6	48	16
F5	Dealing In Sched Iv Controlled Substance (35-48-4-3)	0	0	1	0
F5	Dealing Possessing Look-Alike Substance (35-48-4-4.6)	0	0	2	0

F5	Disarming A Law Enforcement Officer (35-44.1-3-2)	0	1	6	1
F5	Domestic Battery Resulting In Sbi (35-42-2-1.3A1)	0	0	2	0
F5	Domestic Battery W/ Bodily Injury Pregnant Woman (35-42-2-1.3)	1	0	4	0
F5	Domestic Battery With Prev Battery Conv (35-42-2-1.3)	36	6	189	15
F5	Escape (35-44.1-3-4)	6	0	28	5
F5	Fail To Stop After Acc - Result In Death (9-26-1-1.1)	0	0	1	0
F5	Failure To Register As A Sex Offender (11-8-8-17)	19	1	82	1
F5	Fraud (35-43-5-4)	2	1	4	2
F5	Fraud On A Financial Institution (35-43-5-8)	2	1	17	5
F5	Handgun Violation (Felony Within 15 Yrs) (35-47-2-1)	44	3	161	11
F5	Home Improvement Fraud Offenses (35-43-6-12)	0	0	1	0
F5	Identity Deception (35-43-5-3.5)	0	0	0	1
F5	Incest (35-46-1-3)	0	0	1	0
F5	Inmate Fraud (35-43-5-20)	0	0	0	1
F5	Interference With Medical Services (35-45-21-5)	0	1	0	1
F5	Intimidation (35-45-2-1)	18	2	99	6
F5	Kidnapping (35-42-3-2)	1	0	5	0
F5	Minor Passenger In Veh - Prev Conviction (9-30-5-3)	0	0	0	1
F5	Neglect Of A Dependent (35-46-1-4)	2	1	11	13
F5	Non Support Dep Child - Prev Conviction (35-46-1-5)	1	0	10	1
F5	Obstruction Of Justice (35-44.1-2-2)	1	0	8	1
F5	Op Veh/Habitual Traf Viol Cause Inj/Dth (9-30-10-17A2)	1	0	1	0
F5	Oper Veh - Intox - Prior Conviction (9-30-5-2)	1	0	2	0
F5	Oper Veh - Intox - Result - Death (9-30-5-5)	0	0	2	0
F5	Oper Veh - Intox - Result - Ser Body Inj (9-30-5-4)	3	1	15	4
F5	Oper Veh - Ser Bodily Injury W/Schd I,li (9-30-5-4(A2))	2	0	6	0
F5	Operate Vehicle After Suspended For Life (9-30-10-17)	11	2	93	10
F5	Possess Chemical Reagents Or Precursors (35-48-4-14.5)	0	0	1	0
F5	Possess Child Porn W/ Aggravating Factor (35-42-4-4(D))	4	0	9	0
F5	Possession Dangerous Device (35-44.1-3-7)	0	1	1	1
F5	Possession Of A Machine Gun Or Bomb (35-47-5-8)	1	0	6	0
F5	Possession Of Child Pornography (35-42-4-4(C))	3	0	15	0
F5	Possession Of Cocaine Or Narcotic Drug (35-48-4-6)	12	6	57	14
F5	Possession Of Methamphetamine (35-48-4-6.1)	34	13	209	51
F5	Possession Of Syringes Or Needles (16-42-19-18)	0	1	1	1

F5	Promoting Prostitution (35-45-4-4)	0	0	1	1
F5	Providing Firearm To Ineligible Person (35-47-2.5-16)	0	0	0	1
F5	Reckless Homicide (35-42-1-5)	4	0	17	2
F5	Resisting Law Enforcement (35-44.1-3-1)	2	0	25	1
F5	Robbery (35-42-5-1)	16	2	76	9
F5	Sexual Misconduct W/ Service Provider (35-44.1-3-10)	0	0	0	1
F5	Sexual Misconduct With A Minor (35-42-4-9)	6	0	42	2
F5	Stalking (35-45-10-5)	3	0	16	0
F5	Strangulation (35-42-2-9)	2	0	10	0
F5	Theft,Receiving Stolen Property (35-43-4-2)	7	3	23	8
F5	Trafficking With An Inmate (35-44.1-3-5)	0	1	7	5
F5	Unlawful Firearm Poss By Serious Felon (35-47-4-5)	0	0	37	1
F5	Vicarious Sexual Gratification (35-42-4-5)	1	0	2	0
F5	Violate Condition Lifetime Parole W/Minr (35-44.1-3-9)	0	0	1	0
F6	Aiding Assisting A Criminal (35-44.1-2-5)	0	0	1	0
F6	Attempted Auto Theft, Receiving Stolen Auto Parts (35-43-4-2.5)	0	0	1	0
F6	Attempted Invasion Of Privacy (35-46-1-15.1)	0	0	1	0
F6	Attempted Residential Entry (35-43-2-1.5)	0	0	1	0
F6	Attempted Theft,Receiving Stolen Property (35-43-4-2)	0	0	2	0
F6	Auto Theft, Receiving Stolen Auto Parts (35-43-4-2.5)	3	0	28	3
F6	Auto Theft-Theft Of Entire Motor Vehicle (35-43-4-2(a))	2	0	3	0
F6	Battery (35-42-2-1)	6	0	40	8
F6	Bestiality, Knowingly Perform Act (35-46-3-14)	0	0	1	0
F6	Check Deception (35-43-5-5)	0	0	0	1
F6	Check Fraud (35-43-5-12)	0	0	1	0
F6	Child Exploitation (35-42-4-4)	0	0	1	0
F6	Conspiracy Dealing A Sched I, Ii, Iii Control Subst (35-48-4-2A-1)	0	0	1	0
F6	Conspiracy Theft,Receiving Stolen Property (35-43-4-2)	0	0	1	0
F6	Criminal Confinement (35-42-3-3)	4	0	18	1
F6	Criminal Recklessness (35-42-2-2)	0	0	8	0
F6	Criminal Trespass (35-43-2-2)	1	0	5	0
F6	Dealing In Marijuana, Hash Oil, Hashish (35-48-4-10)	2	0	3	0
F6	Domestic Battery (35-42-2-1.3)	8	1	64	10
F6	Domestic Violence Animal Cruelty (35-46-3-12.5)	0	0	1	0
F6	Escape (35-44.1-3-4)	10	3	52	11
F6	Failure Of Sex Offender To Possess Id (11-8-8-15)	1	0	2	0
F6	Failure To Appear (35-44.1-2-9)	0	0	2	0

F6	Failure To Register As A Sex Offender (11-8-8-17)	3	0	20	0
F6	Forgery,Counterfeiting,Application Fraud (35-43-5-2)	0	2	8	3
F6	Fraud (35-43-5-4)	1	0	2	2
F6	Habitual Offender (35-50-2-8)	0	1	1	1
F6	Habitual Vehicular Subst Offender Enhanc (9-30-15.5-2)	0	0	1	0
F6	Home Improvement Fraud Offenses (35-43-6-12)	0	0	1	0
F6	Identity Deception (35-43-5-3.5)	2	1	4	3
F6	Illegal Sex Offender Residency (35-42-4-11)	0	0	1	0
F6	Intimidation (35-45-2-1)	9	0	55	2
F6	Invasion Of Privacy (35-46-1-15.1)	3	2	18	3
F6	Knowing, Unlawful Sale Of A Legend Drug (16-42-19-11)	1	0	1	1
F6	Leaving Scene Of An Acc - Ser Bodily Inj (9-26-1-1.1)	0	0	1	0
F6	Maintaining Common Nuisance (35-48-4-13)	0	0	1	0
F6	Maintaining Common Nuisance - Cntrl Subs (35-45-1-5(C))	2	0	6	2
F6	Make False Sales Doc,Upc,Int To Defraud (35-43-5-16)	0	0	1	0
F6	Neglect Of A Dependent (35-46-1-4)	2	3	6	8
F6	Non-Support Of Dependent Child (35-46-1-5)	4	0	11	1
F6	Obstruction Of Justice (35-44.1-2-2)	2	0	8	2
F6	Oper Veh - Intox - Prior Conviction (9-30-5-2)	4	3	45	10
F6	Oper Veh - Intox - Result - Ser Body Inj (9-30-5-4)	0	0	1	0
F6	Oper Veh - Sch 1 Or 2 Control Substance (9-30-5-1(C))	0	0	1	1
F6	Oper Veh .08 Or More - Prior Conviction (9-30-5-1)	3	2	19	10
F6	Oper Vehicle - Intox - Prev Conviction (9-30-5-3)	4	0	12	0
F6	Operating Vehicle-Habit Traffic Violator (9-30-10-16)	5	1	28	3
F6	Organized Theft (35-43-2-2.1)	0	1	0	1
F6	Possession Of Child Pornography (35-42-4-4(C))	0	0	1	0
F6	Possession Of Cocaine Or Narcotic Drug (35-48-4-6)	11	11	62	26
F6	Possession Of Marijuana, Hash, Hash Oil (35-48-4-11)	0	0	1	0
F6	Possession Of Methamphetamine (35-48-4-6.1)	51	20	267	82
F6	Possession Of Methamphetamine (35-48-4-6.1A)	3	0	16	5
F6	Possession Of Syringes Or Needles (16-42-19-18)	8	6	59	23
F6	Possession Or Use Of Legend Drug (16-42-19-13)	1	1	9	3
F6	Public Indecency With Prior Conviction (35-45-4-1)	2	0	3	0
F6	Residential Entry (35-43-2-1.5)	5	0	27	0
F6	Resisting Law Enforcement (35-44.1-3-1)	18	2	70	8
F6	Sexual Battery (35-42-4-8)	1	0	7	0

F6	Stalking (35-45-10-5)	0	0	5	2
F6	Strangulation (35-42-2-9)	1	0	11	0
F6	Synthetic Identity Deception (35-43-5-3.8)	0	0	1	0
F6	Theft, Motor Vehicle/Component Parts (35-43-4-2A1B)	0	1	0	1
F6	Theft, Receiving Stolen Property (35-43-4-2)	28	9	117	34
F6	Unlawful Poss Firearm/Dangerous Person (35-47-4-9)	0	0	1	0
FA	Aiding Attempted Murder (35-42-1-1)	0	0	1	0
FA	Aiding Dealing In Methamphetamine (35-48-4-1.1)	1	0	0	0
FA	Arson (35-43-1-1)	0	0	1	0
FA	Attempted Attempted Murder (35-42-1-1)	1	0	7	0
FA	Attempted Child Molesting (35-42-4-3)	1	0	1	0
FA	Attempted Dealing In Methamphetamine (35-48-4-1.1)	1	0	1	0
FA	Burglary (35-43-2-1)	1	0	5	1
FA	Child Molesting (35-42-4-3)	4	0	41	0
FA	Conspiracy Attempted Murder (35-42-1-1)	0	0	1	0
FA	Conspiracy Dealing In Cocaine Or Narcotic Drug (35-48-4-1)	0	0	1	0
FA	Conspiracy Dealing In Methamphetamine (35-48-4-1.1)	0	0	1	0
FA	Criminal Deviate Conduct (35-42-4-2)	0	0	1	0
FA	Dealing In A Sched I, Ii Or Iii Cont Sub (35-48-4-2)	1	0	4	2
FA	Dealing In Cocaine Or Narcotic Drug (35-48-4-1)	1	0	17	0
FA	Dealing In Methamphetamine (35-48-4-1.1)	0	1	9	2
FA	Rape (35-42-4-1)	1	0	10	0
FA	Robbery (Serious Bodily Injury) (35-42-5-1)	1	0	7	0
FA	Voluntary Manslaughter (35-42-1-3)	1	0	4	0
FB	Aggravated Battery (35-42-2-1.5)	3	0	8	1
FB	Aiding Burglary (35-43-2-1)	0	0	1	0
FB	Aiding Dealing In Cocaine Or Narcotic Drug (35-48-4-1)	0	0	1	0
FB	Aiding Dealing In Methamphetamine (35-48-4-1.1)	0	0	1	0
FB	Arson (35-43-1-1)	1	0	5	0
FB	Attempted Child Molesting (35-42-4-3)	0	0	2	0
FB	Attempted Criminal Deviate Conduct (35-42-4-2)	0	0	1	0
FB	Attempted Dealing In Cocaine Or Narcotic Drug (35-48-4-1)	0	0	1	0
FB	Attempted Rape (35-42-4-1)	0	0	2	0
FB	Attempted Robbery (Armed Or Bodily Injury) (35-42-5-1)	1	0	3	0
FB	Attempted Sexual Misconduct With A Minor (35-42-4-9)	0	0	1	0
FB	Battery (35-42-2-1)	0	0	1	0
FB	Burglary (35-43-2-1)	13	1	79	4
FB	Carjacking (35-42-5-2)	0	0	2	0

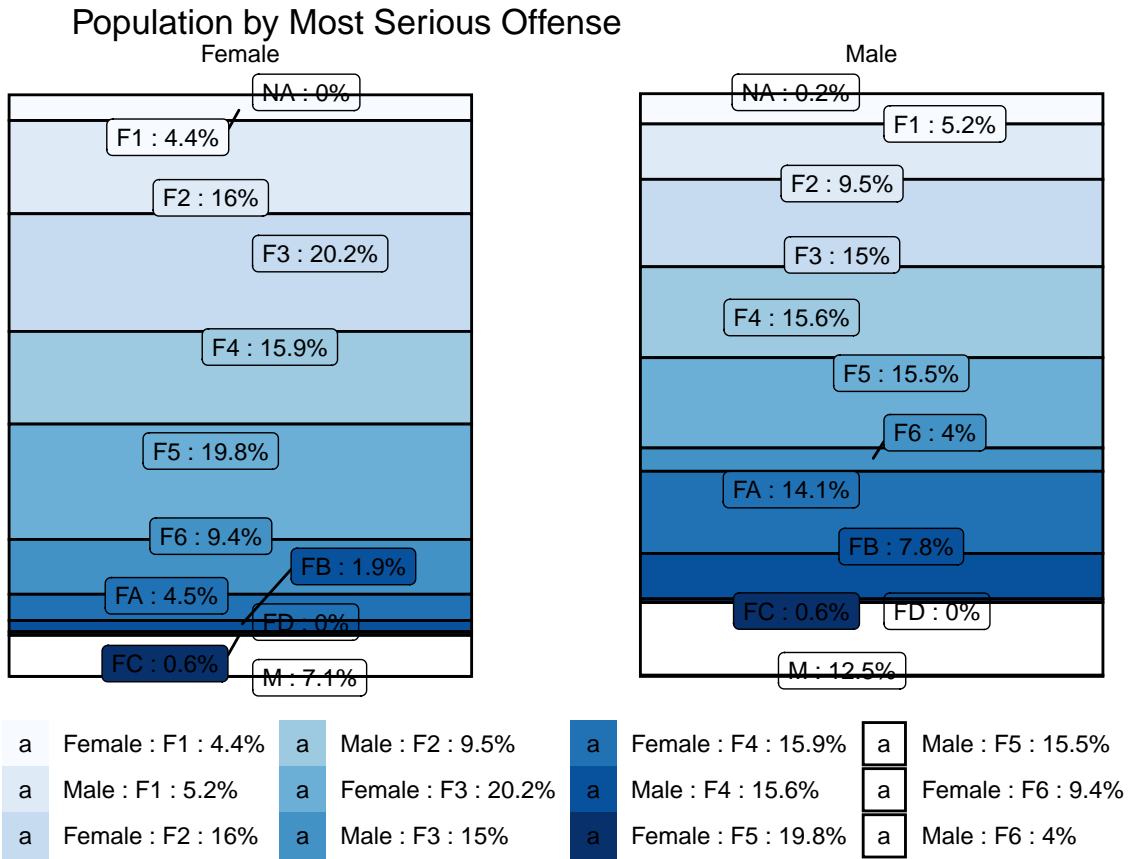
FB	Child Molesting (35-42-4-3)	6	0	36	0
FB	Conspiracy Robbery (Armed Or Bodily Injury) (35-42-5-1)	0	0	2	0
FB	Criminal Confinement (35-42-3-3)	1	0	5	0
FB	Criminal Deviate Conduct (35-42-4-2)	0	0	6	0
FB	Dealing In A Sched I,Ii Or Iii Contr Sub (35-48-4-2)	1	0	15	0
FB	Dealing In Cocaine Or Narcotic Drug (35-48-4-1)	4	1	28	7
FB	Dealing In Methamphetamine (35-48-4-1.1)	5	0	47	5
FB	Escape (35-44-3-5)	0	0	1	0
FB	Fail To Stop Aft Acc - Sbi - Oper Intox (9-26-1-1)	0	0	1	0
FB	Habitual Substance Offender (35-50-2-10)	1	0	1	0
FB	Human Sexual Trafficking (35-42-3.5-1)	0	0	0	1
FB	Incest (35-46-1-3)	0	0	2	0
FB	Neglect Of A Dependent (35-46-1-4)	2	0	4	0
FB	Possession Of Cocaine Or Narcotic Drug (35-48-4-6)	0	0	2	0
FB	Possession Of Methamphetamine (35-48-4-6.1)	0	0	4	1
FB	Rape (35-42-4-1)	3	0	22	0
FB	Robbery (Armed Or Bodily Injury) (35-42-5-1)	7	1	55	2
FB	Sexual Misconduct With A Minor (35-42-4-9)	2	0	14	0
FB	Unlawful Firearm Poss By Serious Felon (35-47-4-5)	2	0	8	0
FB	Voluntary Manslaughter (35-42-1-3)	0	0	4	0
FC	Accident - Fail To Stop - Death (9-26-1-8)	0	0	1	0
FC	Assisting A Criminal (35-44-3-2)	0	0	1	0
FC	Auto Theft, Receiving Stolen Auto Parts (35-43-4-2.5)	0	0	3	0
FC	Battery (35-42-2-1)	1	0	6	0
FC	Burglary (35-43-2-1)	2	0	12	0
FC	Child Exploitation (35-42-4-4)	0	0	1	0
FC	Child Molesting (35-42-4-3)	3	0	14	0
FC	Corrupt Business Influence (35-45-6-2)	0	0	2	0
FC	Criminal Confinement (35-42-3-3)	0	0	2	0
FC	Criminal Recklessness (35-42-2-2)	0	0	1	0
FC	Dealing In Sched Iv Controlled Substan (35-48-4-3)	0	0	0	1
FC	Domestic Battery (35-42-2-1.3)	1	0	0	0
FC	Escape (35-44-3-5)	0	0	1	0
FC	Failure To Register As A Sex Offender (11-8-8-17)	0	0	2	0
FC	Forgery,Counterfeiting,Application Fraud (35-43-5-2)	0	0	4	4
FC	Fraud On A Financial Institution (35-43-5-8)	0	0	1	0
FC	Neglect Of A Dependent (35-46-1-4)	1	0	2	0
FC	Non Support Of Dependent Child (35-46-1-5)	2	0	9	0
FC	Operate Vehicle After Suspended For Life (9-30-10-17)	1	0	4	0
FC	Operating Vehicle-Habit Traffic Violator (9-30-10-16)	0	0	1	0

FC	Possession O A Controlled Substance (35-48-4-7)	1	0	1	0
FC	Possession Of A Sawed-Off Shotgun (35-47-5-4.1)	0	0	0	1
FC	Robbery (35-42-5-1)	0	0	4	0
FC	Sale,Possession,Use Legend Drug W/Prior (16-42-19-27)	0	0	0	1
FC	Sexual Misconduct With A Minor (35-42-4-9)	0	0	1	0
FC	Trafficking With An Inmate (35-44-3-9)	0	0	1	0
FD	Auto Theft, Receiving Stolen Auto Parts (35-43-4-2.5)	0	0	1	0
FD	Failure To Appear (35-44-3-6)	0	0	1	0
FD	Handgun Violation (35-47-2-1)	0	0	1	0
FD	Non-Support Of Child (35-46-1-5)	1	0	2	0
FD	Oper Vehicle While Intox-Prev Conviction (9-30-5-3)	0	0	0	1
FD	Possession Of Cocaine Or A Narcotic Drug (35-48-4-6)	0	0	2	0
FD	Possession Of Methamphetamine (35-48-4-6.1)	0	0	0	1
FD	Theft,Receiving Stolen Property (35-43-4-2)	0	0	2	1
HO	Habitual Offender (35-50-2-8)	0	0	1	0
M	Aiding Murder (35-42-1-1)	1	1	1	1
M	Murder (35-42-1-1)	8	1	100	7
Total		1025	213	6042	872

# Population by Most Serious Offense

Number of Female Offenders: 2088

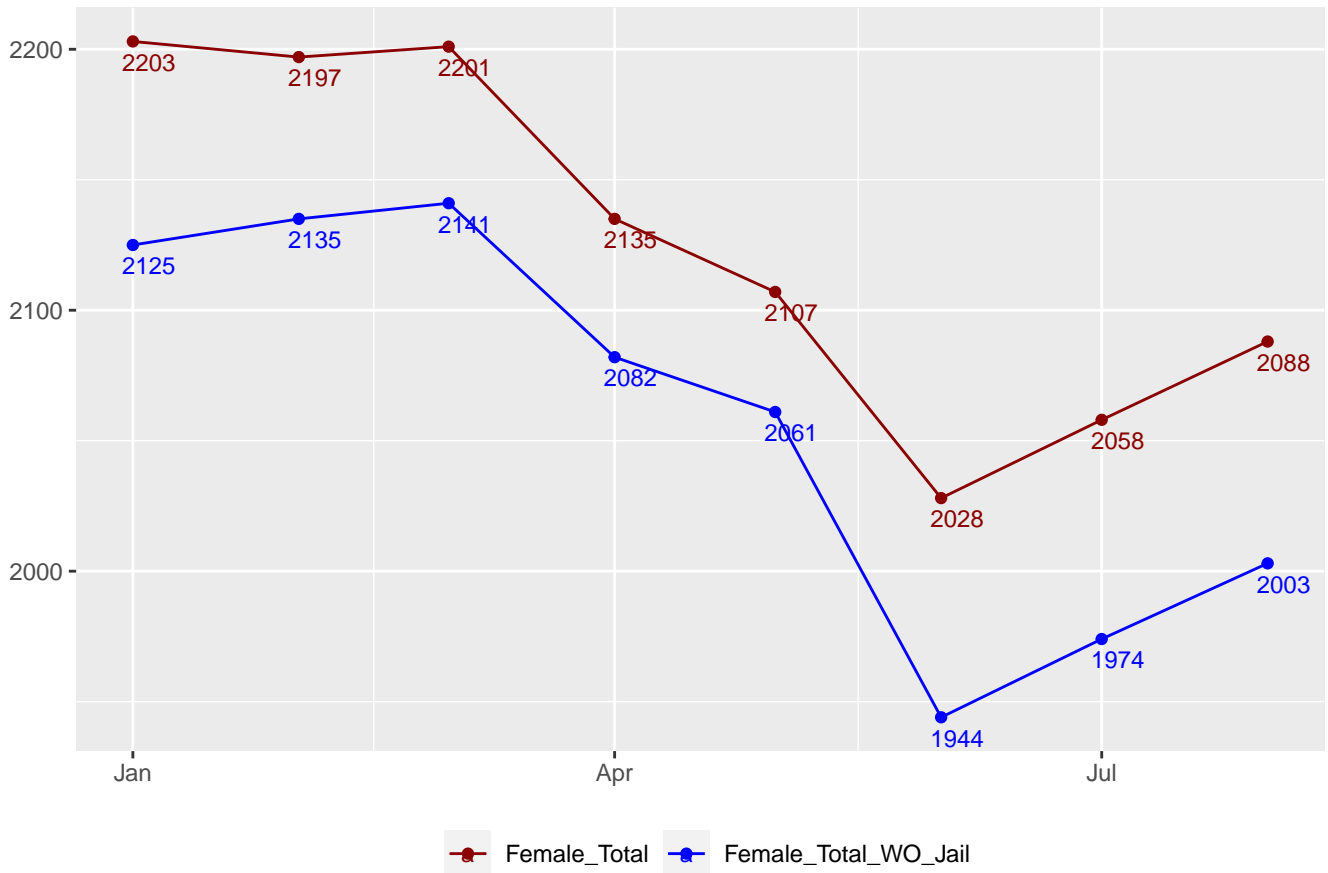
Number of Male Offenders: 20341





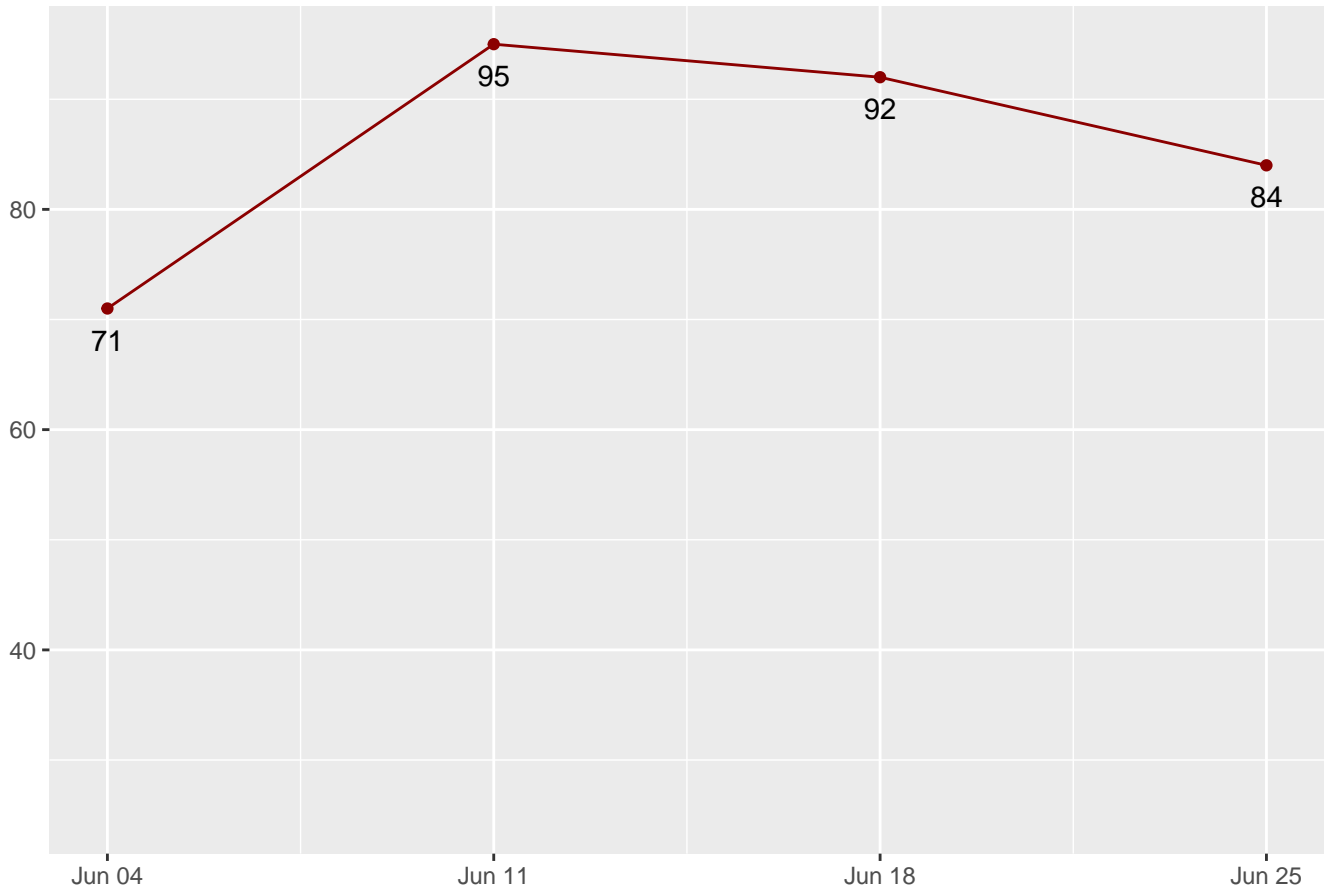
# Average Daily Adult Female Offender Population in 2023

## Average Daily Adult Female Offender Population

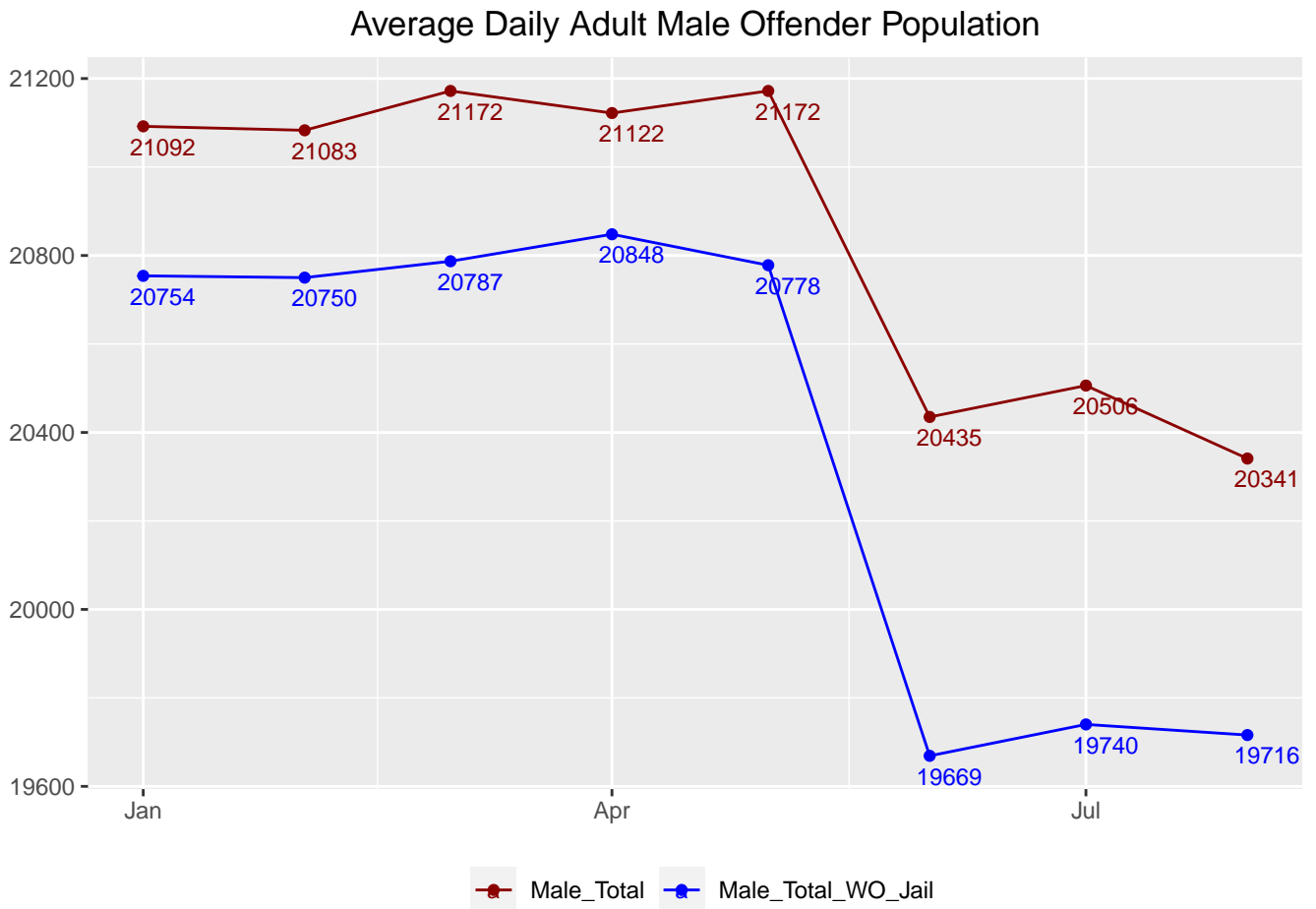


# Adult Females Held in County Jails in 2023

## Adult Females Held in County Jails

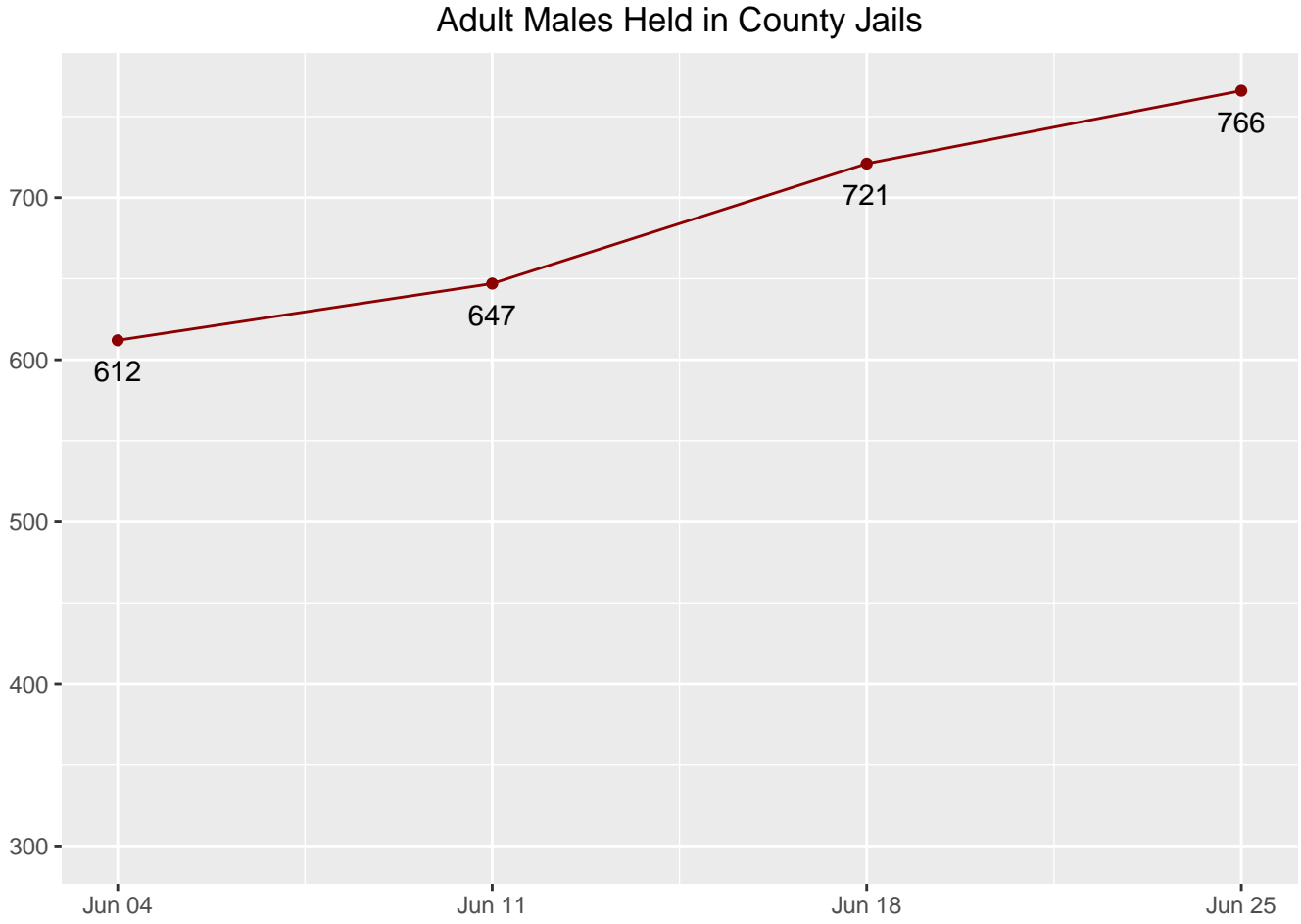


# Average Daily Adult Male Offender Population 2023



# Adult Males Held in County Jails

Adult Males Held in County Jails in 2023





# Juvenile Offender Statistics



## Juvenile Statistics for July 2023

### Juvenile Admissions and Releases

Table 30: Juvenile Admissions

GENDER	COUNT
Male	25
Female	2
Total	27

Table 31: Juvenile Releases

GENDER	DESCRIPTION	COUNT
Male	Discharge	17
Male	Probation	1
Female	Discharge	11
Total		29

### Juvenile Admissions by County

Table 32: Juvenile Admissions by County

COUNTY	COUNT
Allen	2
Clark	1
Elkhart	2
Grant	1
Hamilton	1
Hendricks	1
Jasper	1
La Porte	1
Lake	3
Lawrence	1
Madison	1
Marion	5
Scott	1
St Joseph	1
Vanderburgh	2
Wayne	1
White	2
Total	27

## Juvenile Releases by County

Table 33: Juvenile Releases by County

COUNTY	COUNT
De Kalb	1
Delaware	1
Elkhart	1
Floyd	1
Hendricks	1
Howard	2
Kosciusko	1
Lake	1
Lawrence	1
Marion	1
Marshall	1
Pulaski	1
Rush	1
Scott	2
St Joseph	1
St. Joseph	1
Sullivan	1
Unknown	9
Warrick	1
Total	29

## Total Number of Committing Offenses for Juveniles Committed to the Indiana Department of Correction

Table 34: Total Number of Committing Offenses for Juveniles Committed to the Indiana Department of Correction

Offense Level	Primary Offense	Male	Female	YTD Male	YTD Female
Severity I	Aggravated Battery (35-42-2-1.5)	3	0	5	0
Severity I	Attempted Burglary (35-43-2-1)	0	0	1	0
Severity I	Attempted Robbery (Armed Or Bodily Injury) (35-42-5-1)	0	0	1	0
Severity I	Battery (35-42-2-1)	3	1	7	9
Severity I	Battery By Bodily Waste (35-42-2-1E)	0	0	1	0
Severity I	Burglary (35-43-2-1)	2	0	4	0
Severity I	Child Molesting (35-42-4-3)	2	0	10	0
Severity I	Criminal Recklessness (35-42-2-2)	2	0	5	0
Severity I	Dangerous Possession Of A Handgun (35-47-10-5)	0	0	7	0
Severity I	Dangerous Possession Of Firearm (35-47-10-5A)	5	0	7	0
Severity I	Domestic Battery (35-42-2-1.3)	2	0	7	5
Severity I	Murder (35-42-1-1)	1	0	5	0
Severity I	Poss. Of Hd Gun W/O License (35-47-2-1)	1	0	3	0
Severity I	Possession Of A Firearm On School Prop (35-47-9-2)	0	0	1	0
Severity I	Possession Of A Machine Gun Or Bomb (35-47-5-8)	0	0	1	0
Severity I	Resisting Law Enforcement (35-44.1-3-1)	3	0	2	0
Severity I	Robbery (35-42-5-1)	1	0	1	1
Severity I	Robbery (Armed Or Bodily Injury) (35-42-5-1)	2	0	3	0
Severity I	Sexual Battery (35-42-4-8)	0	0	1	0
Severity II	Escape (35-44.1-3-4)	0	0	1	0
Severity II	Intimidation (35-45-2-1)	2	0	10	3
Severity II	Resisting Law Enforcement (35-44.1-3-1)	0	0	3	0
Severity III	Aiding Auto Theft, Receiving Stolen Auto Parts (35-43-4-2.5)	0	1	0	1
Severity III	Attempted Auto Theft, Receiving Stolen Auto Parts (35-43-4-2.5)	0	0	1	0
Severity III	Auto Theft, Receiving Stolen Auto Parts (35-43-4-2.5)	0	0	1	1
Severity III	Battery (35-42-2-1)	0	0	5	4
Severity III	Burglary (35-43-2-1)	1	0	1	0
Severity III	Escape (35-44.1-3-4)	0	0	0	1
Severity III	False Reporting (35-44.1-2-3)	1	0	0	0
Severity III	Interfer With The Reporting Of A Crime (35-45-2-5)	0	0	1	0
Severity III	Killing A Domestic Animal (35-46-3-12D)	1	0	0	0
Severity III	Mischief (35-43-1-2)	2	0	2	0
Severity III	Possession Of Cocaine Or Narcotic Drug (35-48-4-6)	2	0	1	0
Severity III	Possession Or Use Of Legend Drug (16-42-19-13)	0	0	1	0
Severity III	Residential Entry (35-43-2-1.5)	0	0	1	0



Severity III	Resisting Law Enforcement (35-44-3-3)	0	1	4	0
Severity III	Theft, Receiving Stolen Property (35-43-4-2)	2	1	4	0
Severity III	Theft,Receiving Stolen Property (35-43-4-2)	2	0	1	0
Severity III	Trespassing (35-43-2-2)	0	0	1	0
Severity IV	Disorderly Conduct (35-45-1-3)	0	0	1	0
Severity IV	Possession Of Marijuana (35-48-4-11)	2	0	2	0
Severity IV	Probation Violation (002)	2	0	0	0
Severity IV	Runaway (31-6-4-1.3)	0	1	0	0
Total		44	5	113	25

## Number of Juvenile Offenders by Most Serious Offense Committed to the Indiana Department of Correction

Table 35: Number of Juvenile Offenders by Most Serious Offense Committed to the Indiana Department of Correction

Offense Level	Primary Offense	Male	Female	YTD Male	YTD Female
Severity I	Aggravated Battery (35-42-2-1.5)	3	0	5	0
Severity I	Attempted Burglary (35-43-2-1)	0	0	1	0
Severity I	Attempted Robbery (Armed Or Bodily Injury) (35-42-5-1)	0	0	1	0
Severity I	Battery (35-42-2-1)	3	1	7	9
Severity I	Battery By Bodily Waste (35-42-2-1E)	0	0	1	0
Severity I	Burglary (35-43-2-1)	2	0	4	0
Severity I	Child Molesting (35-42-4-3)	2	0	10	0
Severity I	Criminal Recklessness (35-42-2-2)	1	0	5	0
Severity I	Dangerous Possession Of A Handgun (35-47-10-5)	0	0	7	0
Severity I	Dangerous Possession Of Firearm (35-47-10-5A)	1	0	7	0
Severity I	Domestic Battery (35-42-2-1.3)	2	0	7	5
Severity I	Murder (35-42-1-1)	0	0	5	0
Severity I	Poss. Of Hd Gun W/O License (35-47-2-1)	1	0	3	0
Severity I	Possession Of A Firearm On School Prop (35-47-9-2)	0	0	1	0
Severity I	Possession Of A Machine Gun Or Bomb (35-47-5-8)	0	0	1	0
Severity I	Resisting Law Enforcement (35-44.1-3-1)	1	0	2	0
Severity I	Robbery (35-42-5-1)	1	0	1	1
Severity I	Robbery (Armed Or Bodily Injury) (35-42-5-1)	2	0	3	0
Severity I	Sexual Battery (35-42-4-8)	0	0	1	0
Severity II	Escape (35-44.1-3-4)	0	0	1	0
Severity II	Intimidation (35-45-2-1)	1	0	10	3
Severity II	Resisting Law Enforcement (35-44.1-3-1)	0	0	3	0
Severity III	Aiding Auto Theft, Receiving Stolen Auto Parts (35-43-4-2.5)	0	1	0	1
Severity III	Attempted Auto Theft, Receiving Stolen Auto Parts (35-43-4-2.5)	0	0	1	0
Severity III	Auto Theft, Receiving Stolen Auto Parts (35-43-4-2.5)	0	0	1	1
Severity III	Battery (35-42-2-1)	0	0	5	4
Severity III	Burglary (35-43-2-1)	1	0	1	0
Severity III	Escape (35-44.1-3-4)	0	0	0	1
Severity III	Interfer With The Reporting Of A Crime (35-45-2-5)	0	0	1	0
Severity III	Mischief (35-43-1-2)	0	0	2	0
Severity III	Possession Of Cocaine Or Narcotic Drug (35-48-4-6)	1	0	1	0
Severity III	Possession Or Use Of Legend Drug (16-42-19-13)	0	0	1	0
Severity III	Residential Entry (35-43-2-1.5)	0	0	1	0
Severity III	Resisting Law Enforcement (35-44-3-3)	0	0	4	0
Severity III	Theft, Receiving Stolen Property (35-43-4-2)	1	0	4	0

Severity III	Theft,Receiving Stolen Property (35-43-4-2)	0	0	1	0
Severity III	Trespassing (35-43-2-2)	0	0	1	0
Severity IV	Disorderly Conduct (35-45-1-3)	0	0	1	0
Severity IV	Possession Of Marijuana (35-48-4-11)	1	0	2	0
Total		24	2	113	25

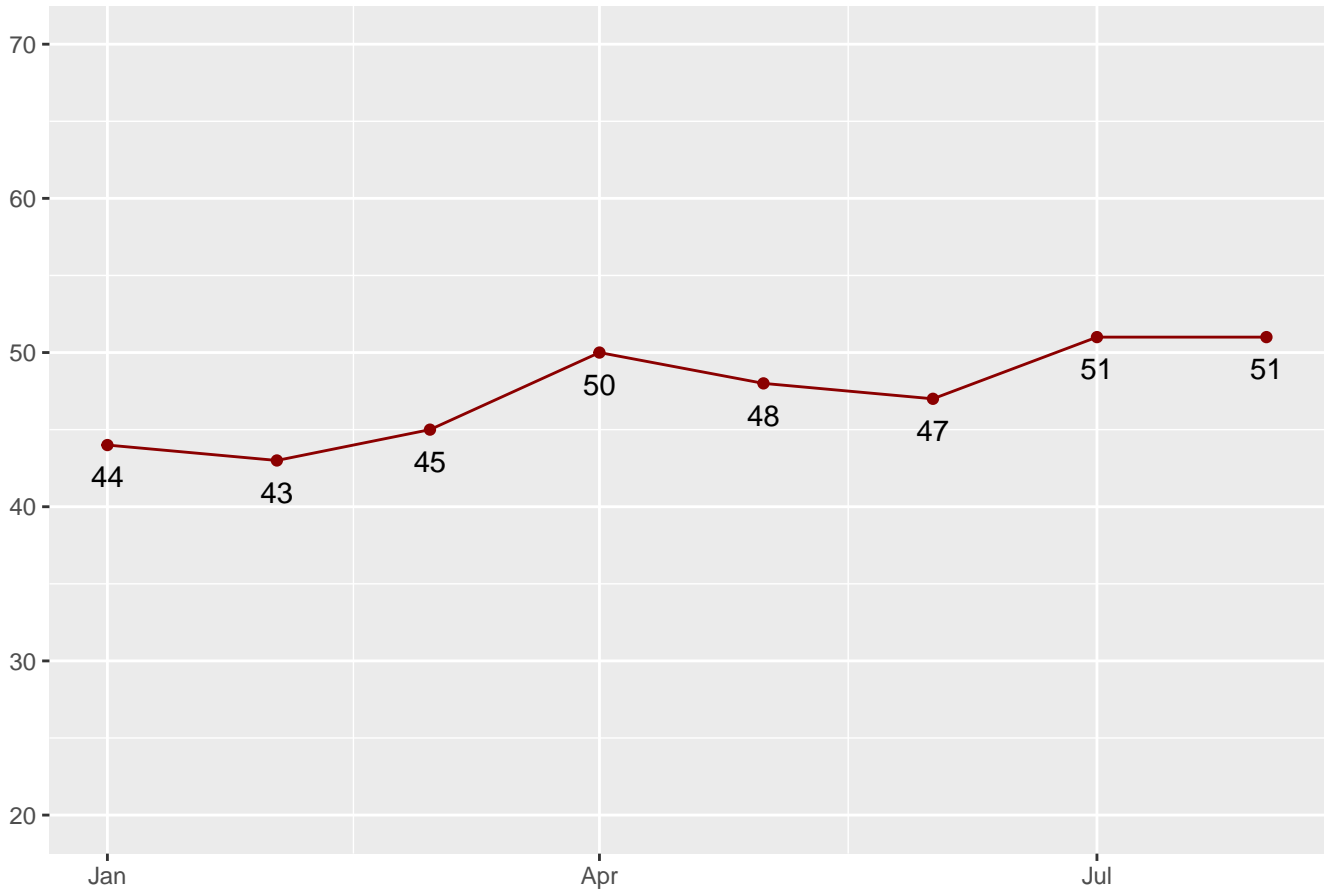
## Juvenile Female New Commitments

Table 36: Juvenile Female New Commitments

Date	GENDER	COUNT
2020-09-01	Female	4
2020-10-01	Female	2
2020-11-01	Female	5
2020-12-01	Female	3
2021-01-01	Female	4
2021-02-01	Female	0
2021-03-01	Female	1
2021-04-01	Female	3
2021-05-01	Female	6
2021-06-01	Female	6
2021-07-01	Female	3
2021-08-01	Female	5
2021-09-01	Female	3
2021-10-01	Female	2
2021-11-01	Female	3
2021-12-01	Female	3
2022-01-01	Female	2
2022-02-01	Female	6
2022-03-01	Female	3
2022-04-01	Female	3
2022-05-01	Female	7
2022-06-01	Female	3
2022-07-01	Female	1
2022-08-01	Female	4
2022-09-01	Female	4
2022-10-01	Female	4
2022-11-01	Female	3
2022-12-01	Female	7
2023-01-01	Female	1
2023-02-01	Female	6
2023-03-01	Female	7
2023-04-01	Female	11
2023-05-01	Female	7
2023-06-01	Female	10
2023-07-01	Female	5
2023-08-01	Female	2

# Average Daily Juvenile Female Offender Population

## Average Daily Juvenile Female Offender Population



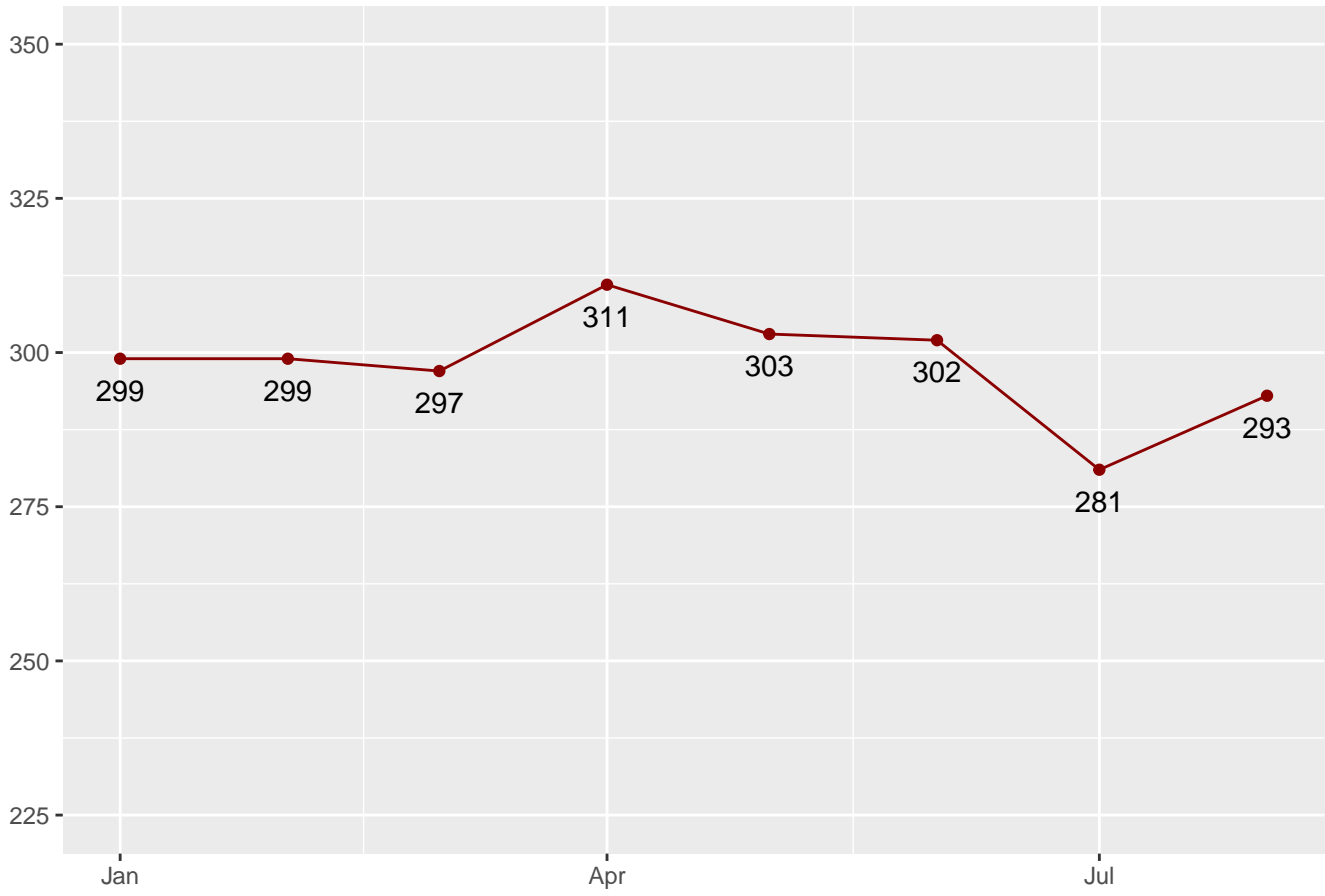
## Juvenile Male New Commitments

Table 37: Juvenile Male New Commitments

Date	GENDER	COUNT
2020-09-01	Male	20
2020-10-01	Male	17
2020-11-01	Male	19
2020-12-01	Male	20
2021-01-01	Male	6
2021-02-01	Male	16
2021-03-01	Male	28
2021-04-01	Male	22
2021-05-01	Male	23
2021-06-01	Male	23
2021-07-01	Male	21
2021-08-01	Male	15
2021-09-01	Male	23
2021-10-01	Male	9
2021-11-01	Male	22
2021-12-01	Male	28
2022-01-01	Male	23
2022-02-01	Male	17
2022-03-01	Male	34
2022-04-01	Male	25
2022-05-01	Male	23
2022-06-01	Male	34
2022-07-01	Male	24
2022-08-01	Male	24
2022-09-01	Male	26
2022-10-01	Male	22
2022-11-01	Male	26
2022-12-01	Male	24
2023-01-01	Male	25
2023-02-01	Male	26
2023-03-01	Male	35
2023-04-01	Male	42
2023-05-01	Male	30
2023-06-01	Male	27
2023-07-01	Male	19
2023-08-01	Male	25

# Average Daily Juvenile Male Offender Population for 2023

## Average Daily Juvenile Male Offender Population



## Juvenile Parole Caseload for July 2023

Table 38: Male Parole District Caseload

Parole District	Gender	Parolee	Other Jurisdiction	Interstate Compact
PD0	Male	7	1	0
PD1	Male	2	0	0
PD2	Male	19	3	0
PD3	Male	3	1	0
PD4	Male	4	0	0
PD7	Male	3	0	0
PD8	Male	8	0	0
PD9	Male	1	0	0
PD10	Male	10	0	0
PD Totals	Male	57	5	0

Table 39: Female Parole District Caseload

Parole District	Gender	Parolee	Other Jurisdiction	Interstate Compact
PD1	Female	1	0	0
PD2	Female	1	0	0
PD3	Female	3	0	0
PD8	Female	3	1	0
PD9	Female	2	0	0
PD Totals	Female	10	1	0

Table 40: Juvenile Parole Caseload

Date	Male Parolee	Female Parolee	Other Jurisdiction Male	Interstate Male	Other Jurisdiction Female	Interstate Female
2022-09-01	27	1	NA	NA	NA	NA
2022-10-01	21	1	NA	NA	NA	NA
2022-11-01	18	1	NA	NA	NA	NA
2022-12-01	22	1	NA	NA	NA	NA
2023-01-01	2	0	NA	NA	NA	NA
2023-02-01	20	0	NA	NA	NA	NA
2023-03-01	20	0	NA	NA	NA	NA
2023-04-01	17	0	0	1	0	0
2023-05-01	17	3	0	0	0	0
2023-06-01	18	5	11	1	1	0
2023-07-01	61	7	9	0	1	0
2023-08-01	57	10	5	0	1	0



**Indiana Department of Correction  
Indiana Government Center South, Room E334  
302 W. Washington Street  
Indianapolis, IN 46204**

**Prepared by:  
Tad DeWitt, Data Analyst  
tdewitt1@idoc.in.gov**

**This report and previous reports may be found at:**

**<http://www.in.gov/idoc/2376.htm>**





The Indiana Department of Correction advances public safety and successful re-entry through dynamic supervision, programming, and partnerships.